

# BJ-W3000 BJ-W3050 PARTS CATALOG

REVISION 0

Q90-5644-000	BJ-W3000
Q90-5654-000	BJ-W3050
Q90-5609-721	Accessory Kit(USA)
Q90-5619-731	Accessory Kit(EUR)
Q90-5629-741	Accessory Kit(UK)
Q90-5639-751	Accessory Kit(AUS)
Q90-5729-710	Accessory Kit(JPN)
Q90-5689-700	ST-01 A0
Q90-5699-700	AT-02 A1

## Canon

JAN. 2000

## QY8-31AK-000

**0100 GR 0.35-0**

# BJ-W3000 BJ-W3050 PARTS CATALOG



## Application

This manual has been issued by Canon Inc. for qualified person to learn technical theory, installation, maintenance, and repair of products. This manual covers all localities where the products are sold. For this reason, there may be information in this manual that does not apply to your locality.

## Corrections

This manual could include technical inaccuracies or typographical errors due to improvements or changes in the products. When changes occur in applicable products or in the content of this manual, Canon will release technical information as the need arises. In the event of major changes in the contents of this manual over a long or short period. Canon will issue a new editions of this manual.

The following paragraph does not apply to any countries where such provisions are inconsistent with local law.

## Trademarks

The product names and company names described in this manual are the registered trademarks of the individual companies.

## Copyright

This manual is copyrighted with all rights reserved. Under the copyright laws, this manual may not be copied, reproduced or translated into another language, in whole or in part, without the written consent of Canon Inc.

Copyright © 2000 by Canon Inc.  
CANON INC.  
Quality Engineering Center  
30-2 Shimomaruko 3-chome, Ohta-ku,  
Tokyo 146-8501, Japan

## DTP System

This manual was produced on an Apple® Power Macintosh® G3 personal computer and Canon LBP-2030PS laser beam printer, final pages were printed on Valityper® 4300J.  
A Canon mo-5001S™ Magneto-optical Storage Subsystem with mo-502M™ Magneto-Optical Storage Disk Cartridge and mo-IF2™ Machintosh® interface kit were used for storing large volumes of page layout, graphic and parts list data for this manual.  
Parts layout illustrations and Logotypes were created using MACROMEDIA® FreeHand® 7J.  
Pattern drawing were scanned by CanoScan 600 scanner with Adobe® photoshop®.  
Documents and page layouts were created using QuarkXpress® 3.3J.  
Parts lists were created using Helix Technologies® Herix Xpress® and converted to EPS files.

## I. CONTENTS

- A. PARTS LAYOUT & PARTS LIST
- B. SCREWS & WASHERS LIST
- C. NUMERICAL INDEX

## II. ABOUT THIS MANUAL

### A. PARTS LAYOUT & PARTS LIST

#### Parts layout illustration

##### a) **Parts search**

Find a part from the parts layout illustration and find its key number from the parts list to identify the part number and name. For screws, nuts, washers, lock washers, pins, spacers, see SCREWS & WASHERS LIST.

**Note:** If parts have the same or similar shape but different specifications, their key number is assigned to several part numbers and names in the parts list.

##### b) **Parts replacement procedure**

To replace parts, the parts layout illustrations have figure numbers according to the disassembly procedure of the product. The parts that require careful work are shown the illustration.

#### C) **TOOL LIST**

This is a list of tools used for servicing products.

#### Parts list

##### a) **FIGURE & KEY No.**

The FIGURE & KEY No. column corresponds to the key numbers assigned to the parts in the parts layout illustration. It also corresponds to the part locations printed on the PC board.

##### b) **PART NUMBER**

The PART NUMBER column gives the part numbers corresponding to the key numbers. To order a part, indicate the part number clearly.

**Note:** Parts marked NPN are not service parts.

##### c) **RANK**

The service parts with N in the RANK column are order parts.

##### d) **QTY**

The QTY column gives the number of parts in the corresponding components layout illustration.

##### e) **DESCRIPTION**

The DESCRIPTION column gives the part names in English.

To order a part, indicate the part name, too.

### B. SCREWS & WASHERS LIST

This is a list of screws, nuts, washers, lock washers, pins, and spacers.

The QTY column does not give the number of parts used.

### C. NUMERICAL INDEX

All the parts listed in this parts catalog are arranged in order of part number. You can identify part locations and names from the NUMERICAL INDEX.

# A. PARTS LAYOUT & PARTS LIST

**FIGURE 1** PRINTER & ACCESSORIES

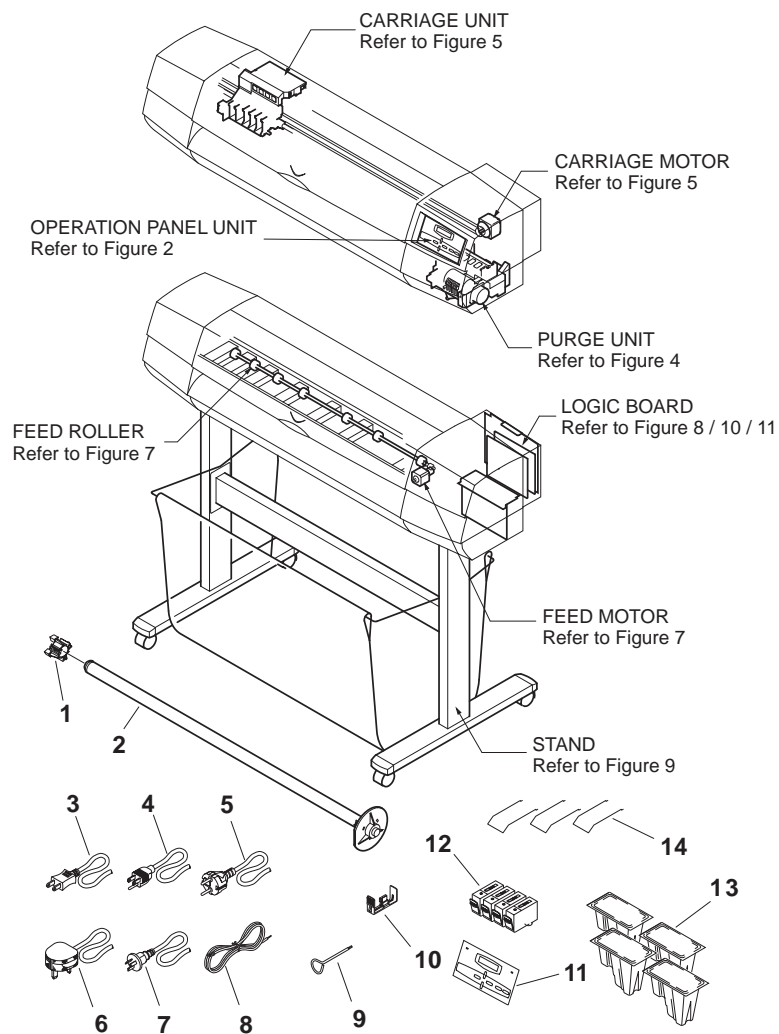


FIGURE & KEY NO.	PART NUMBER	RANK	QTY	DESCRIPTION	REMARKS
1 - 1	QE1-2165-020		1	STOPPER	
2	NPN		1	SPINDLE	
3	QL1-5012-000		1	CORD, POWER	100V
4	QL1-5013-000		1	CORD, POWER	115V UL
5	QL1-5014-000		1	CORD, POWER	220V
6	QL1-5015-000		1	CORD, POWER	240V UK
7	QL1-5016-000		1	CORD, POWER	240V
8	FH2-5006-000		1	WIRE, GROUNDING	
9	NPN		1	HEX KEY WRENCH	
10	NPN		1	CLEANER BLADE	
11	QE1-2404-000		1	OVERLAY, PANEL	*JAPANESE
	QE1-2421-000		1	OVERLAY, PANEL	*ENGLISH
12	NPN		1	INK TANK	
13	NPN		1	BJ PRINthead	
14	QE1-2469-000		3	GUIDE, PAPER	QTY A0: 3, A1: 2
	QE1-2469-000		2	GUIDE, PAPER	QTY A0: 3, A1: 2

**FIGURE 2** EXTERNAL COVER PART

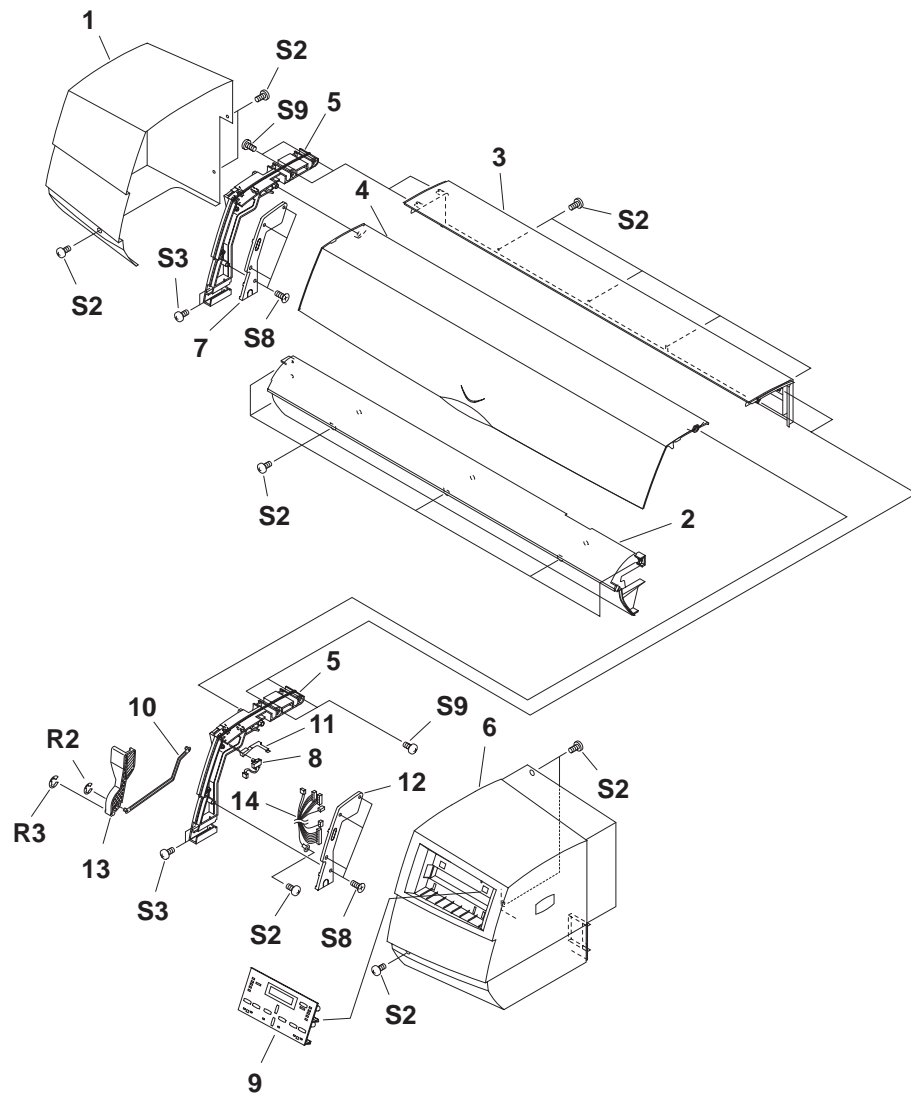


FIGURE & KEY NO.	PART NUMBER	R A N K	Q T Y	DESCRIPTION	REMARKS
2 - 1	QE1-2395-000		1	COVER, LEFT	
2	QL1-0335-000		1	COVER, LOWER	*A1 MODEL ONLY
	QL1-0336-000		1	COVER, LOWER	*A0 MODEL ONLY
3	QL1-0326-000		1	COVER, TOP	*A0 MODEL ONLY
	QL1-0327-000		1	COVER, TOP	*A1 MODEL ONLY
4	QE1-2382-000		1	COVER, FRONT	*A0 MODEL ONLY
	QE1-2383-000		1	COVER, FRONT	*A1 MODEL ONLY
5	QE1-2399-000		2	STAY, COVER	
6	QE1-2396-000		1	COVER, RIGHT	
7	QE1-2400-000		1	PLATE, COVER STAY, LEFT	
8	QL1-0588-000		1	SENSOR, FRONT COVER	
9	QM1-0581-000		1	OPERATION PANEL UNIT	
10	NPN		1	SHAFT, RELEASE LEVER	
11	QE1-2331-000		1	SPRING, LEAF	
12	QE1-2333-000		1	PLATE, COVER STAY, RIGHT	
13	QE1-2415-000		1	LEVER, RELEASE	
14	NPN		1	CABLE, OPERATION PANEL	

**FIGURE 3** IDLER ROLLER ASS'Y PART

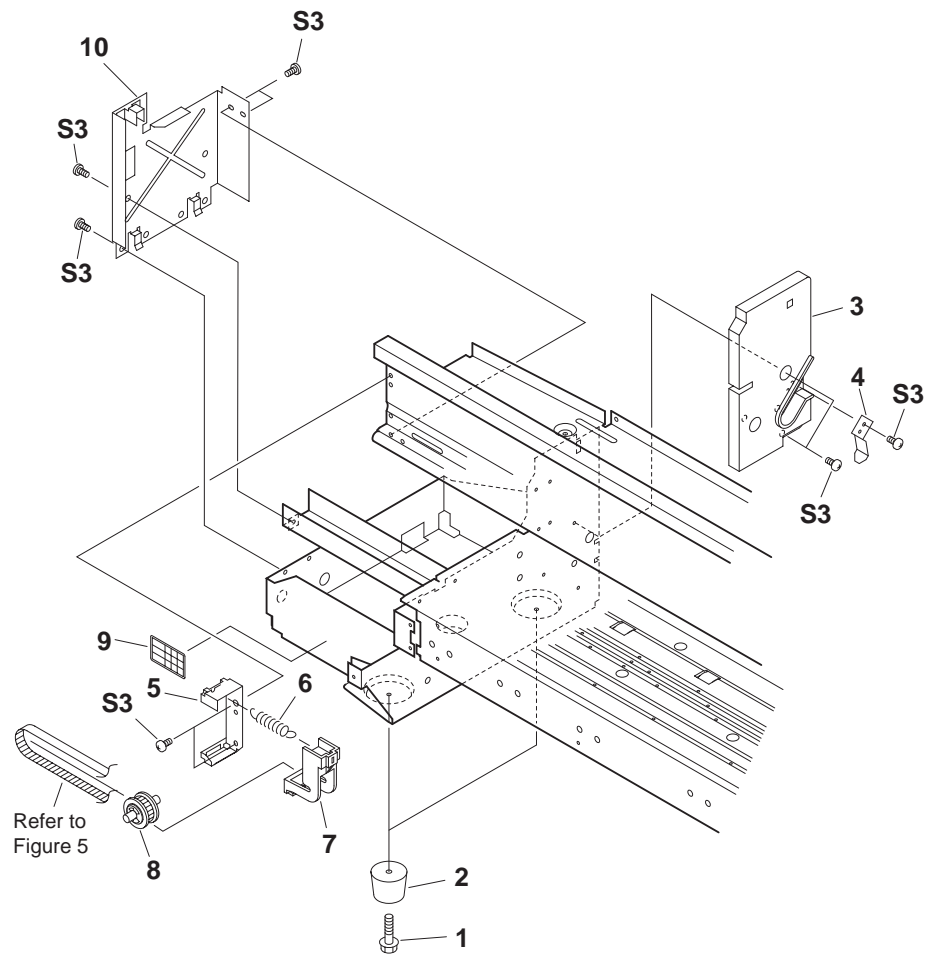


FIGURE & KEY NO.	PART NUMBER	RANK	QTY	DESCRIPTION	REMARKS
3 - 1	QE1-2364-000		2	SCREW, RS, M4X18	
2	QE1-2159-000		2	FOOT, RUBBER	
3	QE1-2160-000		1	HOLDER, SPINDLE, LEFT	
4	QE1-0567-000		1	SPRING, LEAF	
5	NPN		1	RACK, HOLDER	
6	QE1-1255-000		1	SPRING, HOOK END COIL	
7	QE1-2123-000		1	HOLDER, IDLER ROLLER	
8	QM1-0569-000		1	IDLER ROLLER ASS'Y	
9	QE1-0135-000		1	LABEL, H/W SCALE	
10	NPN		1	PLATE, LEFT FRAME	



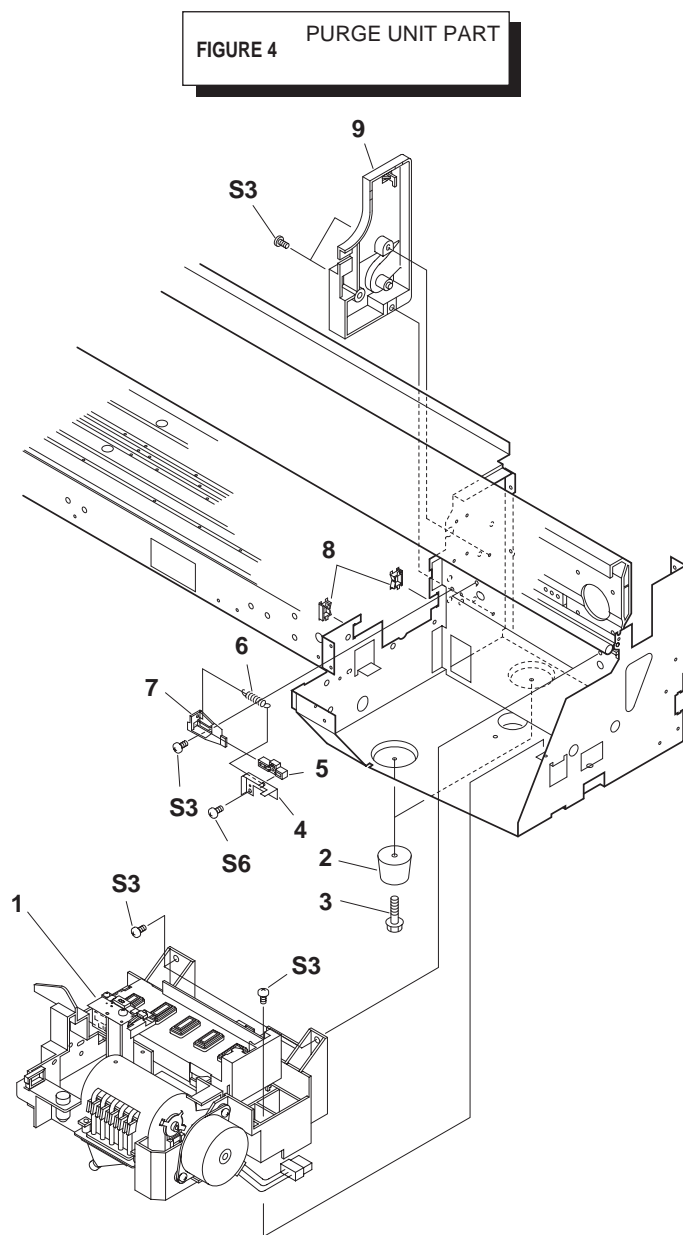


FIGURE & KEY NO.	PART NUMBER	RANK	QTY	DESCRIPTION	REMARKS
4 - 1	QM1-0525-000		1	PURGE UNIT	
2	QE1-2159-000		2	FOOT, RUBBER	
3	QE1-2364-000		2	SCREW, RS, M4X18	
4	QL1-0309-000		1	HOOK, STOPPER	
5	QE1-2300-000		1	STOPPER, RELEASE LEVER	
6	QE1-1264-000		1	SPRING, HOOK END COIL	
7	NPN		1	HOLDER, STOPPER	
8	WT2-0241-000		2	CLIP, CABLE	
9	QE1-2162-000		1	HOLDER, SPINDLE, RIGHT	

**FIGURE 5** CARRIAGE UNIT PART

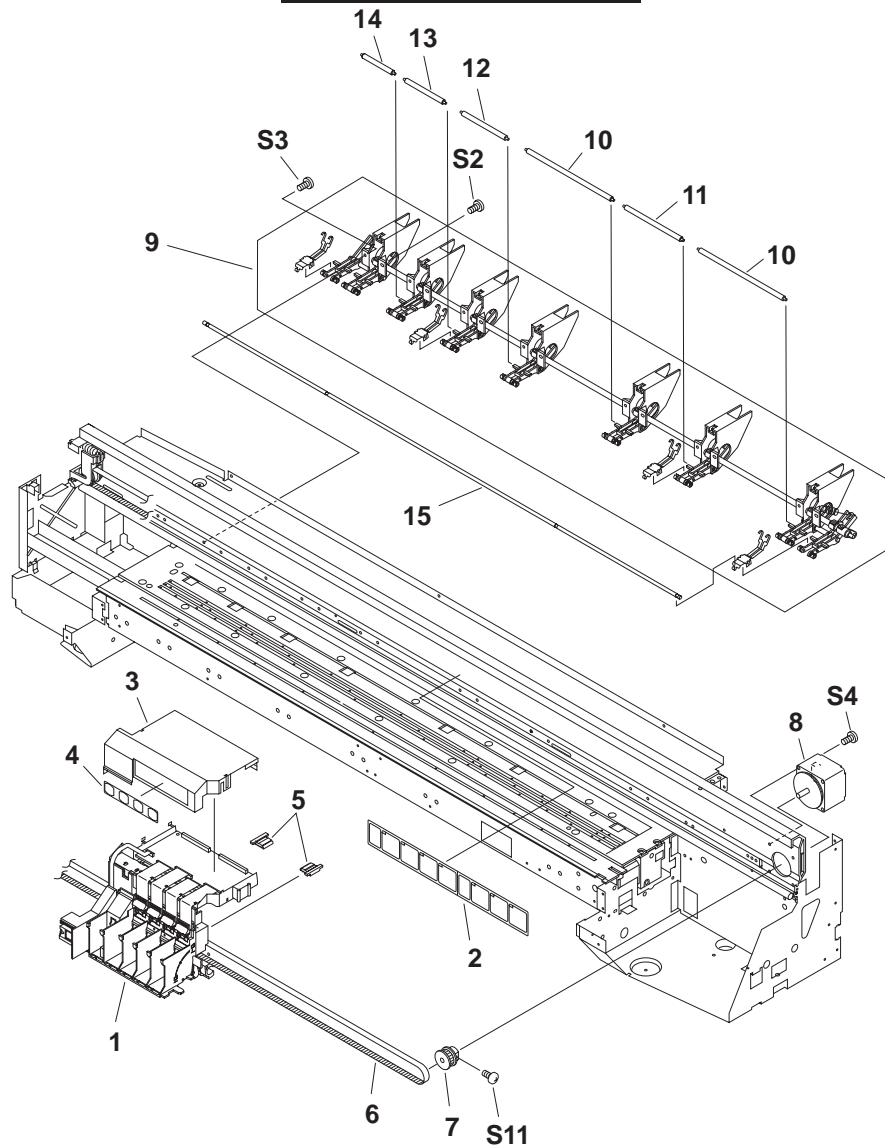


FIGURE & KEY NO.	PART NUMBER	R A N K	Q T Y	DESCRIPTION	REMARKS
5 - 1	QM1-0572-000		1	CARRIAGE UNIT	
2	QE1-2406-000		1	LABEL, INSTRUCTION	
3	QE1-2120-000		1	COVER, CARRIAGE	
4	QE1-2386-000		1	LABEL, COLOR	
5	QE1-2341-000		2	STOPPER, BELT	
6	QE1-2339-000		1	BELT, CARRIAGE	*A0 MODEL ONLY
	QE1-2340-000		1	BELT, CARRIAGE	*A1 MODEL ONLY
7	QL1-0311-000		1	GEAR, CARRIAGE MOTOR	
8	QH4-4261-000		1	MOTOR, CARRIAGE	
9	QM1-0521-070		1	PINCH ROLLER UNIT	*A0 MODEL ONLY
	QM1-0522-070		1	PINCH ROLLER UNIT	*A1 MODEL ONLY
10	QE1-2321-000		2	ROLLER, PRESSURE, REAR	
11	QE1-2322-000		1	ROLLER, PRESSURE, REAR	
12	QE1-2323-000		1	ROLLER, PRESSURE, REAR	*A0 MODEL ONLY
13	QE1-2324-000		1	ROLLER, PRESSURE, REAR	*A0 MODEL ONLY
14	QE1-2325-000		1	ROLLER, PRESSURE, REAR	*A0 MODEL ONLY
15	QE1-2314-000		1	ROLLER, PRESSURE, FRONT	*A0 MODEL ONLY
	QE1-2319-000		1	ROLLER, PRESSURE, FRONT	*A1 MODEL ONLY

**FIGURE 6** FLEXIBLE CABLE PART

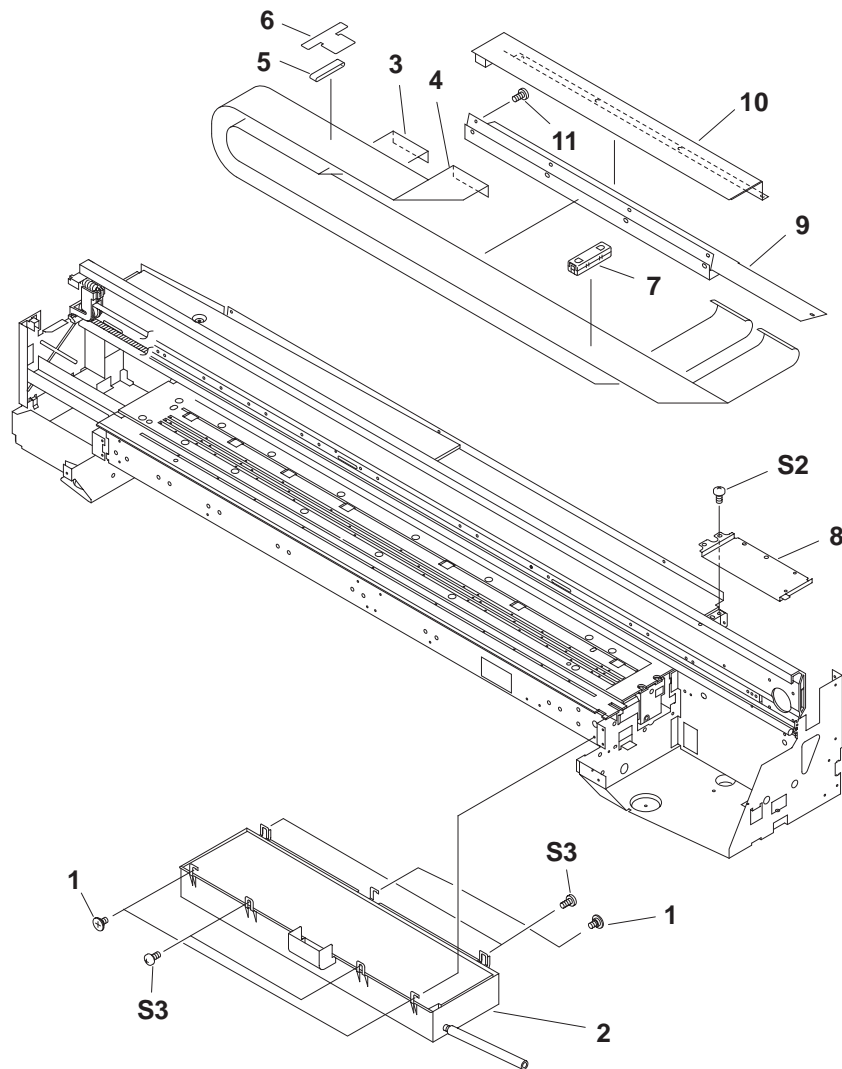


FIGURE & KEY NO.	PART NUMBER	RANK	QTY	DESCRIPTION	REMARKS
6 - 1	FS1-9194-000		3	SCREW, STEPPED M4	
2	QM1-0539-000		1	WASTE INK ABSORBER UNIT	
3	QH2-2346-000		1	CABLE, FLEXIBLE	*A0 MODEL ONLY
	QH2-2347-000		1	CABLE, FLEXIBLE	*A1 MODEL ONLY
4	QH2-2348-000		1	CABLE, FLEXIBLE	*A0 MODEL ONLY
	QH2-2349-000		1	CABLE, FLEXIBLE	*A1 MODEL ONLY
5	WE8-5344-000		1	FERRITE CORE	
6	QE1-2359-000		1	SHEET, FASTEN	
7	WE8-5696-000		1	FERRITE CORE	
8	NPN		1	PLATE, MOUNT	
9	NPN		1	SHEET, NOISE PROTECTION	
10	NPN		1	COVER, FLEXIBLE CABLE	
11	QE1-2374-000		4	SCREW, M4X6	

FIGURE 7

FIGURE  
&  
KEY NO.

**FIGURE 8** ELECTRICAL PART

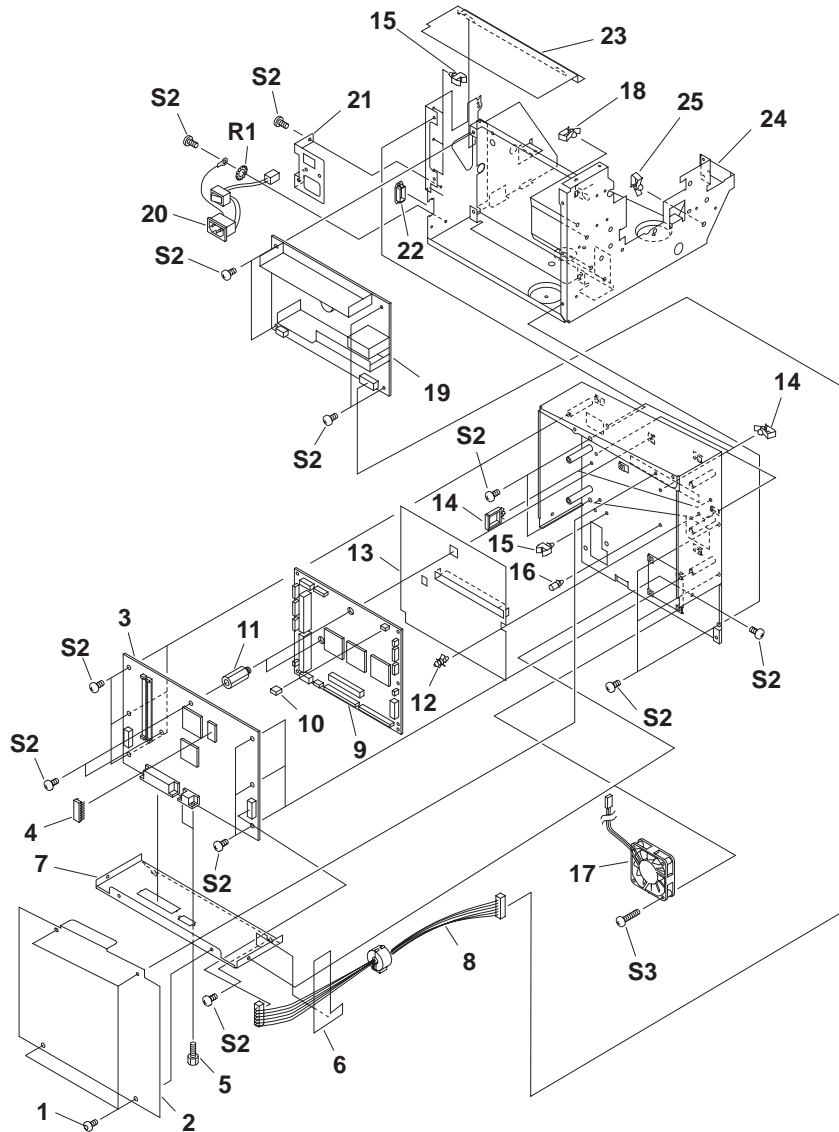


FIGURE & KEY NO.	PART NUMBER	R A N K	Q T Y	DESCRIPTION	REMARKS
8 - 1	QE1-2334-000		4	SCREW, ALLEN, M4X6	
2	NPN		1	PLATE, COVER	
3	QM1-0458-000		1	IMAGE CONTROLLER ASS'Y	
4	QL1-5011-000		1	IC, MBM29F800TA-70PF, FLASH-ROM	
5	QE1-0130-000		2	SCREW, HEX	
6	QE1-2348-000		1	SHEET, PROTECTION	
7	NPN		1	PLATE, COVER	
8	QL1-0587-020		1	POWER SWITCH CABLE ASSY	WITH FERRITE CORE
9	QM1-0455-030		1	ENGINE CONTROLLER ASS'Y	
10	WT1-5412-000		1	CONNECTOR, SHORT	
11	QE1-2136-000		2	STAND OFF	
12	QH7-8302-000		2	SPACER, BOARD	
13	NPN		1	SHEET, PROTECTION	
14	WT2-0317-000		6	CLIP, CABLE	
15	WT2-0434-000		4	CLAMP, CABLE	
16	VT2-5015-005		1	SPACER, BOARD	
17	QH4-4265-000		1	FAN, COOLING	
18	WT2-0494-000		4	CLAMP, CABLE	
19	QH3-3371-000		1	POWER SUPPLY ASS'Y	
20	QL1-0586-000		1	INLET CABLE ASS'Y	
21	NPN		1	PLATE, SWITCH	
22	WT2-5062-000		1	CLIP, CABLE	
23	NPN		1	SHEET, PROTECTION	
24	NPN		1	FRAME, RIGHT	
25	WT2-5617-000		1	CLAMP	

**FIGURE 9** STAND PART

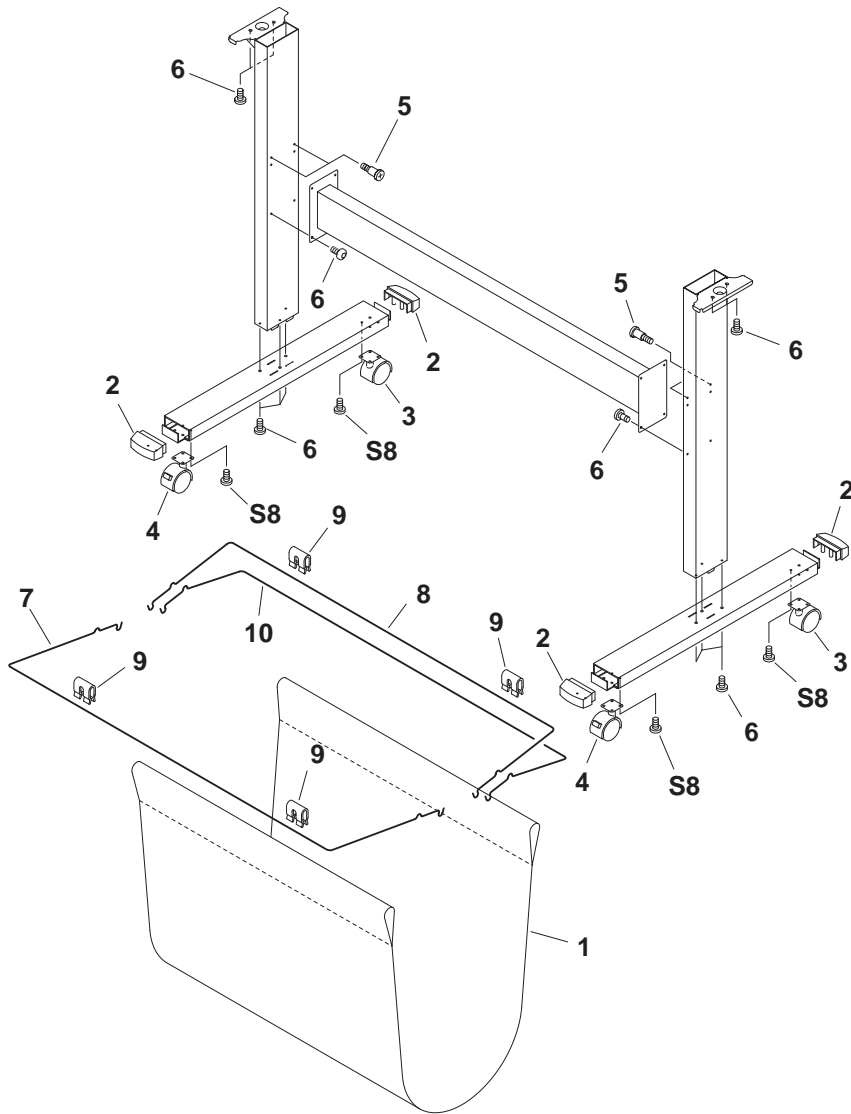
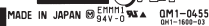
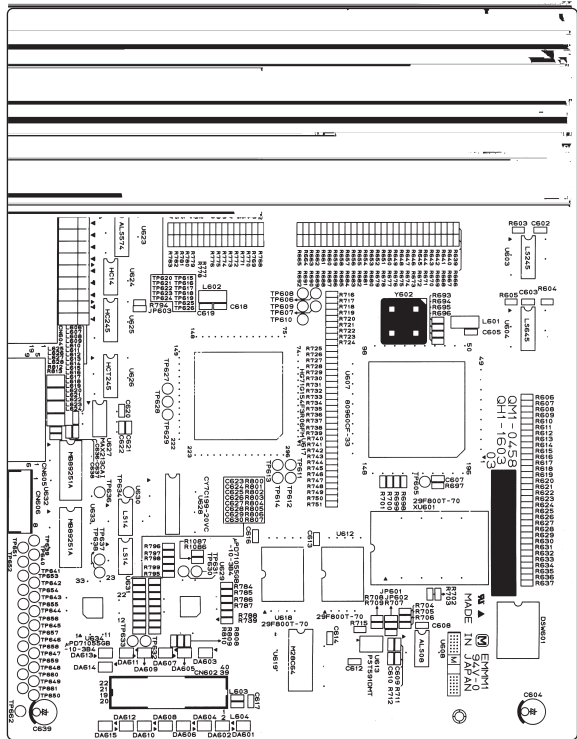


FIGURE & KEY NO.	PART NUMBER	RANK	QTY	DESCRIPTION	REMARKS
9 - 1	QE1-2310-000		1	STACKER, PAPER	*A0 MODEL ONLY
	QE1-2311-000		1	STACKER, PAPER	*A1 MODEL ONLY
	2		4	CAP, FOOT	
	3		2	CASTER	*WITHOUT STOPPER
4	QE1-2293-000		2	CASTER	*WITH STOPPER
5	QE1-1467-000		4	SCREW, STEPPED 6.2X19	
6	QE1-2414-000		18	SCREW, ALLEN, M4X8	
7	QE1-2306-000		1	WIRE, HANGING, FRONT	*A0 MODEL ONLY
	QE1-2308-000		1	WIRE, HANGING, FRONT	*A1 MODEL ONLY
8	QE1-2307-000		1	WIRE, HANGING, REAR	*A0 MODEL ONLY
	QE1-2309-000		1	WIRE, HANGING, REAR	*A1 MODEL ONLY
9	QE1-1749-020		4	CLIP, BASKET, CLOTH	
10	QE1-2336-000		1	WIRE, HANGING, SHORT	*A0 MODEL ONLY

FIGURE 10

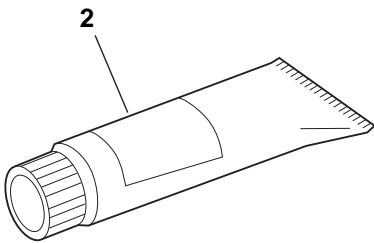
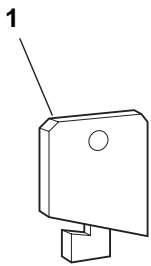
[illegible]

**FIGURE 11** IMAGE CONTROLLER COMPONENT

[illegible]



**FIGURE 12** TOOL

[illegible]

B. SCREWS & WASHERS LIST

FIGURE & KEY NO.	PART NUMBER	R A N K	Q T Y	DESCRIPTION	REMARKS
R - 1	XD1-4200-402			WASHER, TOOTHED LOCK M4	
2	XD2-1100-502			RING, E M5	
3	XD2-1100-642			RING, E M6.4	
S - 1	XB1-2301-209			SCREW, MACHINE M3X12	
2	XB1-2400-606			SCREW, MACHINE M4X6	
3	XB1-2400-609			SCREW, MACHINE M4X6	
4	XB1-2400-809			SCREW, MACHINE M4X8	
5	XB1-2404-009			SCREW, MACHINE M4X40	
6	XB4-7300-609			SCREW, TAP, BINDING HEAD, M3X6	
7	XB4-7300-809			SCREW, B-TIGHT: M3 X 8 MM	
8	XB4-7400-809			SCREW, TAP BINDING HEAD, M4X8	
9	XB4-7401-009			SCREW,TAP BINDING HEAD M4X10	
10	XB6-2300-408			SCREW, M3x4	
11	XB6-7301-209			SCREW, MACHINE M3X12	

## C. NUMERICAL INDEX

PART NUMBER	FIGURE & KEY NO.	DESCRIPTION
CK-0551-020	12- 2	LUBE, PERMALUB G NO.2
6Y8-2123-000	12- 1	JIG, COVER SWITCH
FH2-5006-000	1- 8	WIRE, GROUNDING
FS1-9194-000	6- 1	SCREW, STEPPED M4
QE1-0130-000	8- 5	SCREW, HEX
QE1-0135-000	3- 9	LABEL, HW SCALE
QE1-0567-000	3- 4	SPRING, LEAF
QE1-1254-000	7- 4	SPRING, HOOK END COIL
QE1-1255-000	3- 6	SPRING, HOOK END COIL
QE1-1264-000	4- 6	SPRING, HOOK END COIL
QE1-1464-000	7- 9	BUSHING
QE1-1467-000	9- 5	SCREW, STEPPED 6.2X19
QE1-1749-020	9- 9	CLIP, BASKET, CLOTH
QE1-2120-000	5- 3	COVER, CARRIAGE
QE1-2123-000	3- 7	HOLDER, IDLER ROLLER
QE1-2130-000	7- 5	ROLLER, FEED
QE1-2136-000	8- 11	STAND OFF
QE1-2138-000	7- 3	SCALE, LINEAR
QE1-2144-000	7- 8	HOLDER, FEED MOTOR
QE1-2159-000	3- 2	FOOT, RUBBER
	4- 2	
QE1-2160-000	3- 3	HOLDER, SPINDLE, LEFT
QE1-2162-000	4- 9	HOLDER, SPINDLE, RIGHT
QE1-2165-020	1- 1	STOPPER
QE1-2238-000	7- 5	ROLLER, FEED
QE1-2240-000	7- 3	SCALE, LINEAR
QE1-2292-000	9- 3	CASTER
QE1-2293-000	9- 4	CASTER
QE1-2300-000	4- 5	STOPPER, RELEASE LEVER
QE1-2306-000	9- 7	WIRE, HANGING, FRONT
QE1-2307-000	9- 8	WIRE, HANGING, REAR
QE1-2308-000	9- 7	WIRE, HANGING, FRONT
QE1-2309-000	9- 8	WIRE, HANGING, REAR
QE1-2310-000	9- 1	STACKER, PAPER
QE1-2311-000	9- 1	STACKER, PAPER
QE1-2313-000	7- 2	DUCT
QE1-2314-000	5- 15	ROLLER, PRESSURE, FRONT
QE1-2319-000	5- 15	ROLLER, PRESSURE, FRONT
QE1-2321-000	5- 10	ROLLER, PRESSURE, REAR
QE1-2322-000	5- 11	ROLLER, PRESSURE, REAR
QE1-2323-000	5- 12	ROLLER, PRESSURE, REAR
QE1-2324-000	5- 13	ROLLER, PRESSURE, REAR
QE1-2325-000	5- 14	ROLLER, PRESSURE, REAR
QE1-2331-000	2- 11	SPRING, LEAF
QE1-2333-000	2- 12	PLATE, COVER STAY, RIGHT
QE1-2334-000	8- 1	SCREW, ALLEN, M4X6
QE1-2336-000	9- 10	WIRE, HANGING, SHORT
QE1-2339-000	5- 6	BELT, CARRIAGE
QE1-2340-000	5- 6	BELT, CARRIAGE
QE1-2341-000	5- 5	STOPPER, BELT
QE1-2348-000	8- 6	SHEET, PROTECTION
QE1-2359-000	6- 6	SHEET, FASTEN
QE1-2364-000	3- 1	SCREW, RS, M4X18
	4- 3	
QE1-2374-000	6- 11	SCREW, M4X6
QE1-2382-000	2- 4	COVER, FRONT
QE1-2383-000	2- 4	COVER, FRONT
QE1-2386-000	5- 4	LABEL, COLOR

PART NUMBER	FIGURE & KEY NO.	DESCRIPTION
QE1-2388-000	9- 2	CAP, FOOT
QE1-2395-000	2- 1	COVER, LEFT
QE1-2396-000	2- 6	COVER, RIGHT
QE1-2399-000	2- 5	STAY, COVER
QE1-2400-000	2- 7	PLATE, COVER STAY, LEFT
QE1-2404-000	1- 11	OVERLAY, PANEL
QE1-2406-000	5- 2	LABEL, INSTRUCTION
QE1-2414-000	9- 6	SCREW, ALLEN, M4X8
QE1-2415-000	2- 13	LEVER, RELEASE
QE1-2421-000	1- 11	OVERLAY, PANEL
QE1-2469-000	1- 14	GUIDE, PAPER
	1- 14	
QH2-2346-000	6- 3	CABLE, FLEXIBLE
QH2-2347-000	6- 3	CABLE, FLEXIBLE
QH2-2348-000	6- 4	CABLE, FLEXIBLE
QH2-2349-000	6- 4	CABLE, FLEXIBLE
QH3-3371-000	8- 19	POWER SUPPLY ASSY
QH4-4261-000	5- 8	MOTOR, CARRIAGE
QH4-4262-000	7- 6	MOTOR, FEED
QH4-4265-000	8- 17	FAN, COOLING
QH7-8302-000	8- 12	SPACER, BOARD
QH7-8601-000	11- U617	IC, HG71G154F3R06FM, GATE ARRAY
QH8-0179-000	10- U212	IC, HG71G102D3R04FD, ASIC
QH8-0180-000	10- U204	IC, HG62G042R10F, ASIC
QH8-0181-000	10- U208	IC, TC160G22AF-1256, ASIC
QH8-0191-000	10- U221	IC, HD6427034F20, MPU
QH8-0192-000	10- U202	IC, HD6433042F, MPU
QL1-0287-020	7- 1	PLATEN
QL1-0288-020	7- 1	PLATEN
QL1-0290-000	7- 10	WORM WHEEL ASSY
QL1-0300-000	7- 13	SUCTION FAN ASSY
QL1-0309-000	4- 4	HOOK, STOPPER
QL1-0311-000	5- 7	GEAR, CARRIAGE MOTOR
QL1-0316-000	7- 7	WORM GEAR ASSY
QL1-0326-000	2- 3	COVER, TOP
QL1-0327-000	2- 3	COVER, TOP
QL1-0335-000	2- 2	COVER, LOWER
QL1-0336-000	2- 2	COVER, LOWER
QL1-0586-000	8- 20	INLET CABLE ASSY
QL1-0587-020	8- 8	POWER SWITCH CABLE ASSY
QL1-0588-000	2- 8	SENSOR, FRONT COVER
QL1-5011-000	8- 4	IC, MBM29F800TA-70PF, FLASH-ROM
QL1-5012-000	1- 3	CORD, POWER
QL1-5013-000	1- 4	CORD, POWER
QL1-5014-000	1- 5	CORD, POWER
QL1-5015-000	1- 6	CORD, POWER
QL1-5016-000	1- 7	CORD, POWER
QM1-0455-030	8- 9	ENGINE CONTROLLER ASSY
QM1-0458-000	8- 3	IMAGE CONTROLLER ASSY
QM1-0521-070	5- 9	PINCH ROLLER UNIT
QM1-0522-070	5- 9	PINCH ROLLER UNIT
QM1-0525-000	4- 1	PURGE UNIT
QM1-0539-000	6- 2	WASTE INK ABSORBER UNIT
QM1-0569-000	3- 8	IDLER ROLLER ASSY
QM1-0572-000	5- 1	CARRIAGE UNIT
QM1-0581-000	2- 9	OPERATION PANEL UNIT
VT2-5015-005	8- 16	SPACER, BOARD
WE8-5344-000	6- 5	FERRITE CORE

PART NUMBER	FIGURE & KEY NO.	DESCRIPTION
WE8-5696-000	6- 7	FERRITE CORE
WG8-5437-000	7- 11	SENSOR, PE
WT1-5412-000	8- 10	CONNECTOR, SHORT
WT2-0241-000	4- 8	CLIP, CABLE
WT2-0317-000	8- 14	CLIP, CABLE
WT2-0434-000	8- 15	CLAMP, CABLE
WT2-0494-000	8- 18	CLAMP, CABLE
WT2-5062-000	8- 22	CLIP, CABLE
WT2-5617-000	8- 25	CLAMP
XB1-2301-209	S- 1	SCREW, MACHINE M3X12
XB1-2400-606	S- 2	SCREW, MACHINE M4X6
XB1-2400-609	S- 3	SCREW, MACHINE M4X6
XB1-2400-809	S- 4	SCREW, MACHINE M4X8
XB1-2404-009	S- 5	SCREW, MACHINE M4X40
XB4-7300-609	S- 6	SCREW, TAP, BINDING HEAD, M3X6
XB4-7300-809	S- 7	SCREW, B-TIGHT: M3 X 8 MM
XB4-7400-809	S- 8	SCREW, TAP BINDING HEAD, M4X8
XB4-7401-009	S- 9	SCREW, TAP BINDING HEAD M4X10
XB6-2300-408	S- 10	SCREW, M3x4
XB6-7301-209	S- 11	SCREW, MACHINE M3X12
XD1-4200-402	R- 1	WASHER, TOOTHED LOCK M4
XD2-1100-502	R- 2	RING, E M5
XD2-1100-642	R- 3	RING, E M6.4

**This page intentionally left blank**



This document is printed  
on 100% recycled paper.

# Canon