

BJC-4400

PARTS CATALOG

REVISION 0

Q30-2830-220	120V(CCSI)
Q30-2830-221	120V(CAN)
Q30-2830-222	(UNIVERSAL)
Q30-2830-230,630	220V-240V(EUR)
Q30-2830-231,631	220V-240V(GER)
Q30-2830-232,632	220V-240V(FRN)
Q30-2830-280,680	220V-240V(UK)

Canon

MAY 1998

QY8-3209-000

0598 SE 0.50-0

BJC-4400

PARTS CATALOG

Canon

Application

This manual has been issued by Canon Inc. for qualified person to learn technical theory, installation, maintenance, and repair of products. This manual covers all localities where the products are sold. For this reason, there may be information in this manual that does not apply to your locality.

Corrections

This manual could include technical inaccuracies or typographical errors due to improvements or changes in the products. When changes occur in applicable products or in the content of this manual, Canon will release technical information as the need arises. In the event of major changes in the contents of this manual over a long or short period. Canon will issue a new editions of this manual.

The following paragraph does not apply to any countries where such provisions are inconsistent with local law.

Trademarks

The product names and company names described in this manual are the registered trademarks of the individual companies.

Copyright

This manual is copyrighted with all rights reserved. Under the copyright laws, this manual may not be copied, reproduced or translated into another language, in whole or in part, without the written consent of Canon Inc.

Copyright © 1998 by Canon Inc.

CANON INC.

BJ Printer Technical Support Dept.

16-1, Shimonoge 3-chome, Takatsu-ku, Kawasaki-shi,
Kanagawa 213, Japan

DTP System

This manual was produced on an Apple® Power Macintosh® 7600/120 personal computer and Canon LBP-2030PS laser beam printer, final pages were printed on Valityper® 4300J. A Canon mo-5001S™ Magneto-optical Storage Subsystem with mo-502M™ Magneto-Optical Storage Disk Cartridge and mo-IF2™ Machintosh® interface kit were used for storing large volumes of page layout, graphic and parts list data for this manual.

Parts layout illustrations and Logotypes were created using MACROMEDIA® FREEHAND™ 7J.

Pattern drawing were scanned by EPSON® GT-8000 scanner with Adobe® photoshop®.

Documents and page layouts were created using QuarkXpress® 3.3J.

Parts lists were created using Helix Technologies® Herix Xpress® and converted to EPS files.

I. CONTENTS

- A. ILLUSTRATION INDEX
- B. PARTS LAYOUT & PARTS LIST
- C. SCREWS & WASHERS LIST
- D. TOOL
- E. NUMERICAL INDEX

II. ABOUT THIS MANUAL

A. ILLUSTRATION INDEX

For illustration index, the parts layout illustrations in this parts catalog are listed in abbreviated form in order of illustration number to identify the pages they appear on. To find an illustration of a part, see the ILLUSTRATION INDEX.

B. PARTS LAYOUT & PARTS LIST

Parts layout illustration

a) Parts search

Find a part from the parts layout illustration and find its key number from the parts list to identify the part number and name. For screws, nuts, washers, lock washers, pins, spacers, see SCREWS & WASHERS LIST.

Note: If parts have the same or similar shape but different specifications, their key number is assigned to several part numbers and names in the parts list.

b) Parts replacement procedure

To replace parts, the parts layout illustrations have figure numbers according to the disassembly procedure of the product. The parts that require careful work are shown the illustration.

Parts list

a) FIGURE & KEY No.

The FIGURE & KEY No. column corresponds to the key numbers assigned to the parts in the parts layout illustration.

It also corresponds to the part locations printed on the PC board.

b) PART NUMBER

The PART NUMBER column gives the part numbers corresponding to the key numbers. To order a part, indicate the part number clearly.

Note: Parts marked NPN are not service parts.

c) RANK

The service parts with N in the RANK column are order parts.

d) QTY

The QTY column gives the number of parts in the corresponding components layout illustration.

e) DESCRIPTION

The DESCRIPTION column gives the part names in English.

To order a part, indicate the part name, too.

C. SCREWS & WASHERS LIST

This is a list of screws, nuts, washers, lock washers, pins, and spacers.

The QTY column does not give the number of parts used.

D. TOOL LIST

This is a list of tools used for servicing products.

E. NUMERICAL INDEX

All the parts listed in this parts catalog are arranged in order of part number. You can identify part locations and names from the NUMERICAL INDEX.

A. ILLUSTRATION INDEX

FIGURE 1 TRAY

See Page
B - 1

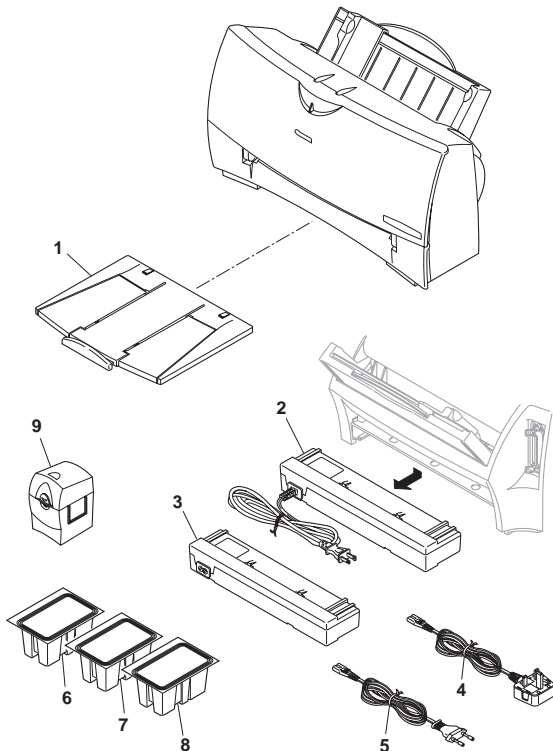


FIGURE 2 FRONT COVER

See Page
B - 3

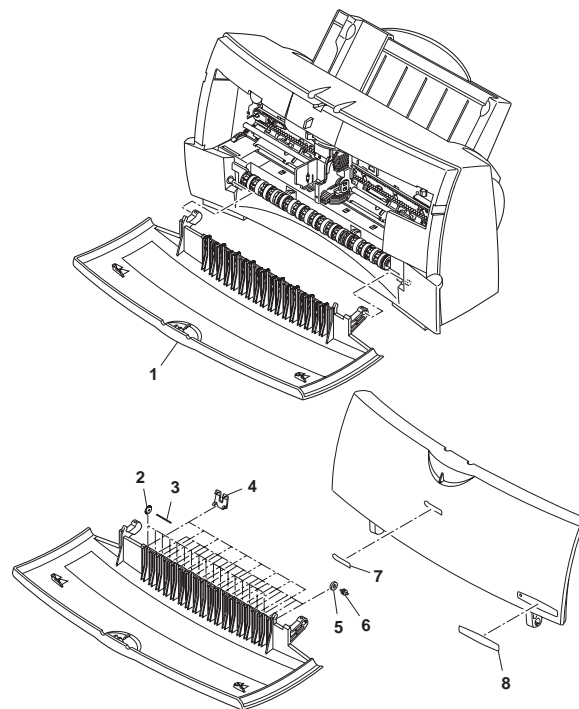


FIGURE 3 INNER COVER

See Page
B - 5

When removing the key No. 1 part,
remove the top claws first.
When reassembling, reassemble
the bottom claws first.

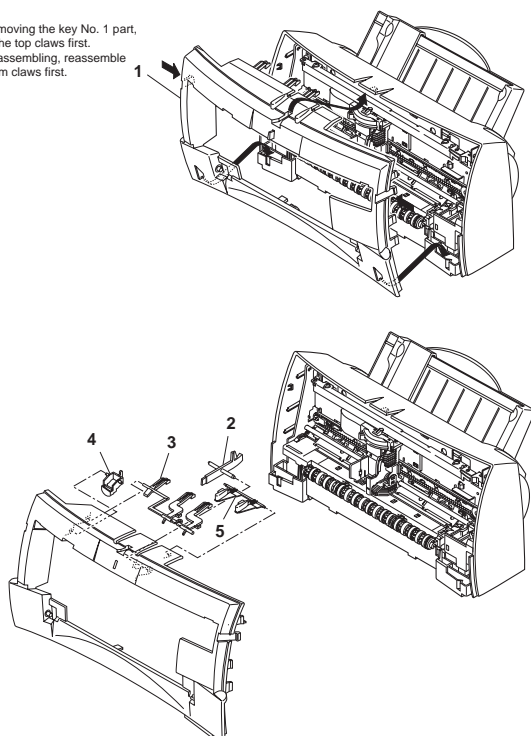
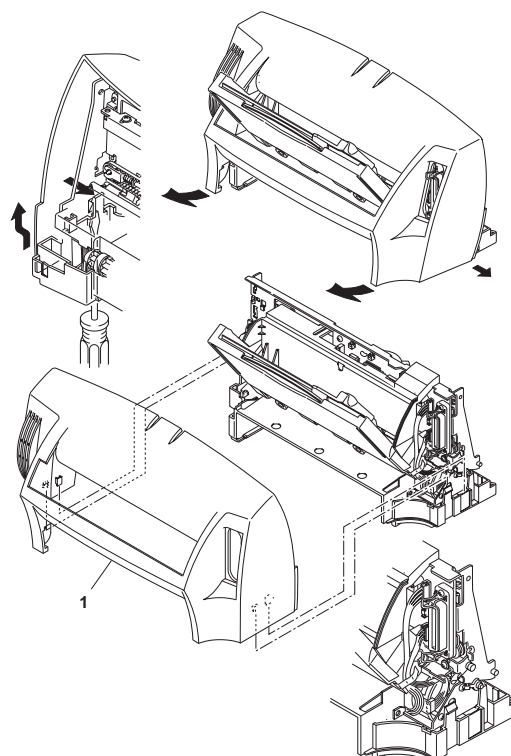


FIGURE 4 REAR COVER

See Page
B - 7



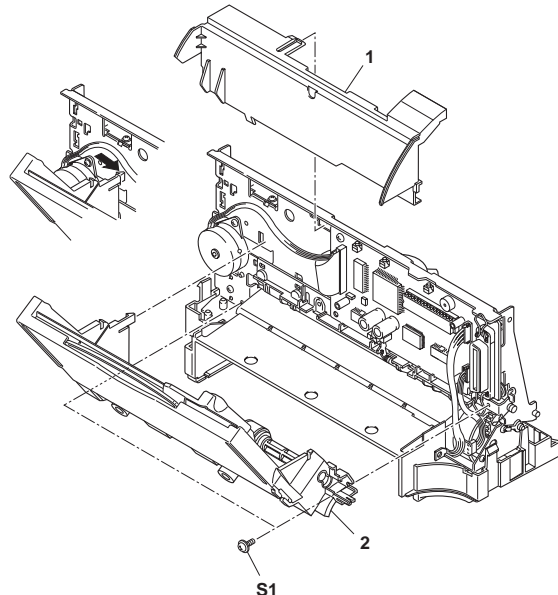
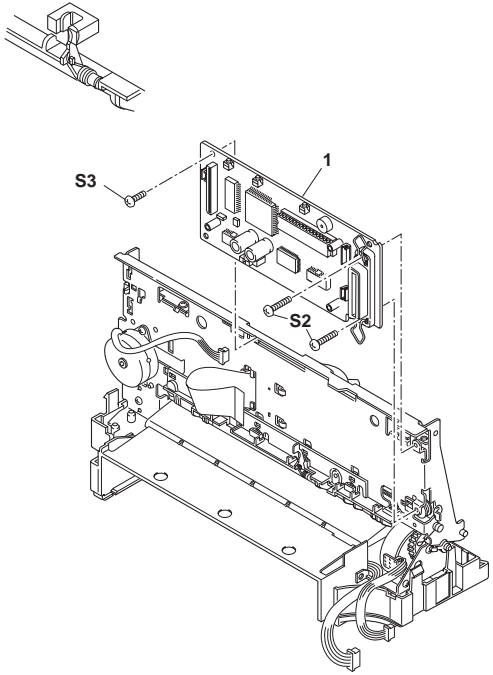
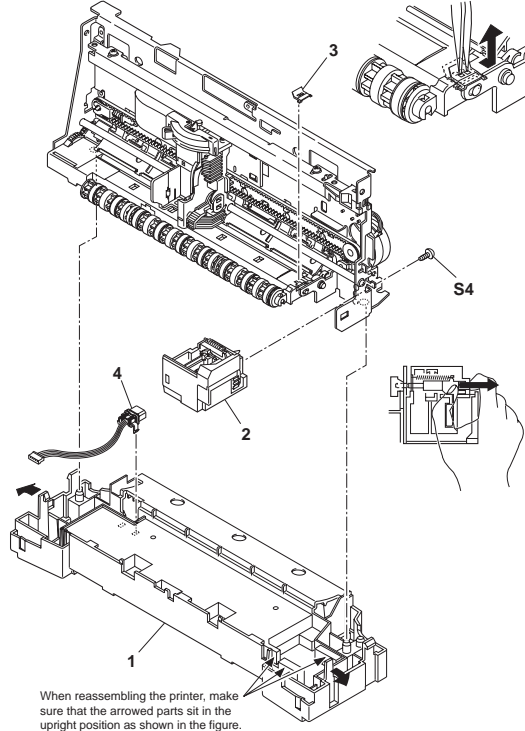
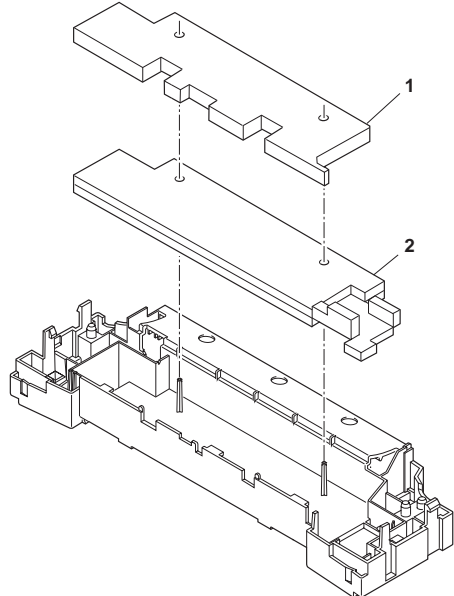
<div>FIGURE 5</div> <div>SHEET FEEDER UNIT</div>	<div>See Page</div> <div>B - 9</div>	<div>FIGURE 6</div> <div>ELECTRICAL PARTS</div>	<div>See Page</div> <div>B - 11</div>
			
<div>FIGURE 7</div> <div>BOTTOM CASE & PURGE UNIT</div>	<div>See Page</div> <div>B - 13</div>	<div>FIGURE 8</div> <div>WASTE INK ABSORBER</div>	<div>See Page</div> <div>B - 15</div>
 <p>When reassembling the printer, make sure that the arrowed parts sit in the upright position as shown in the figure.</p>			

FIGURE 9 CARRIAGE PART (1)

See Page
B - 17

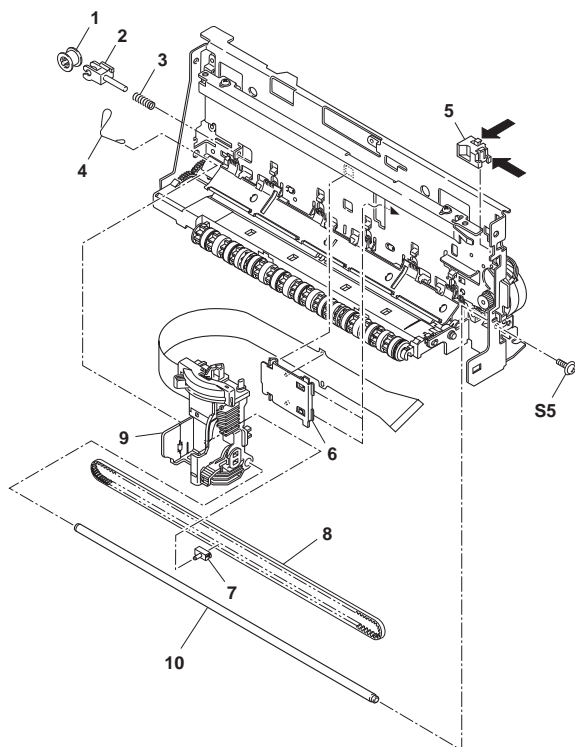


FIGURE 10 CARRIAGE PART (2)

See Page
B - 19

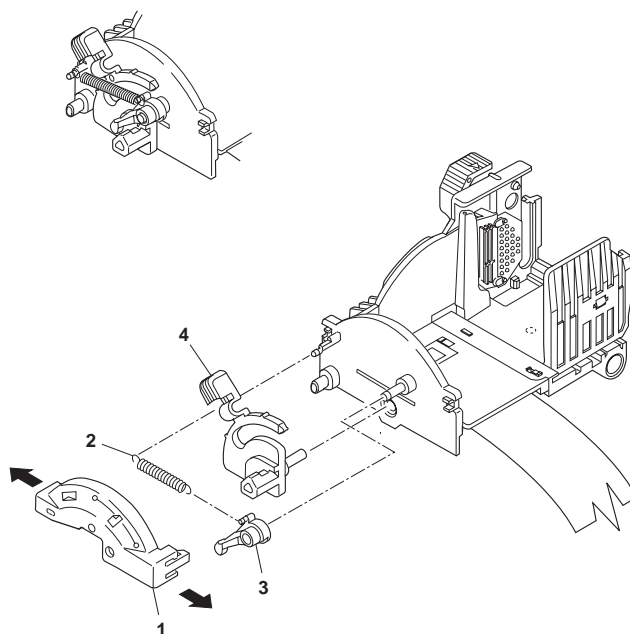


FIGURE 11 CARRIAGE PART (3)

See Page
B - 21

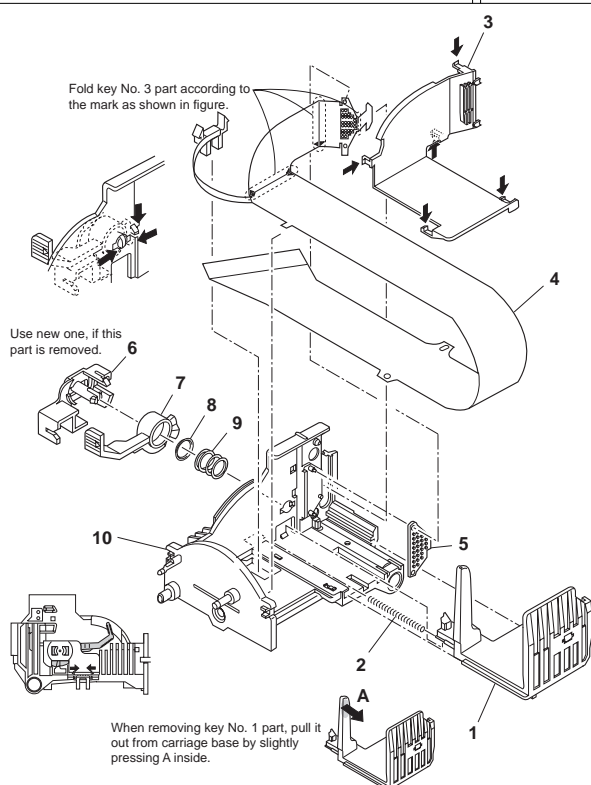
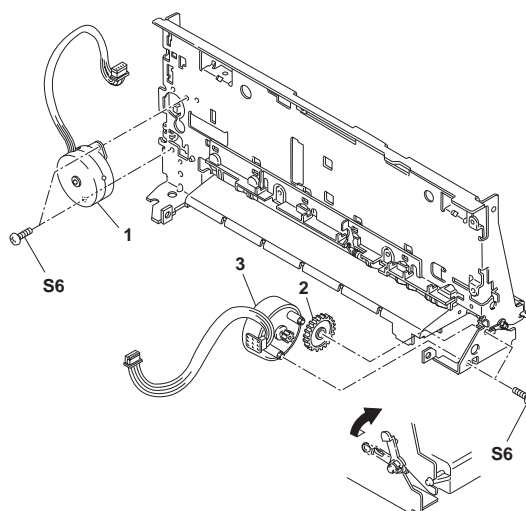


FIGURE 12 MOTORS

See Page
B - 23



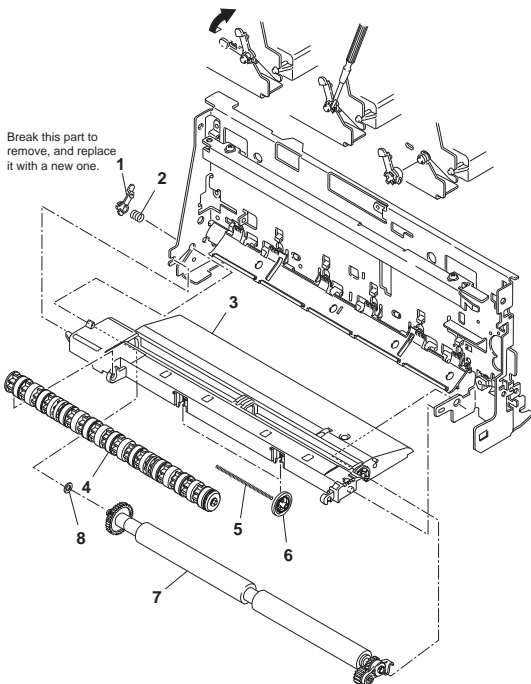
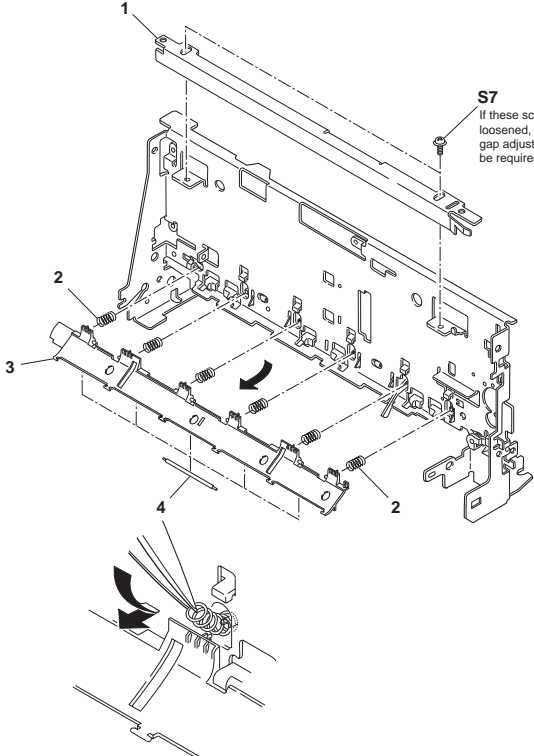
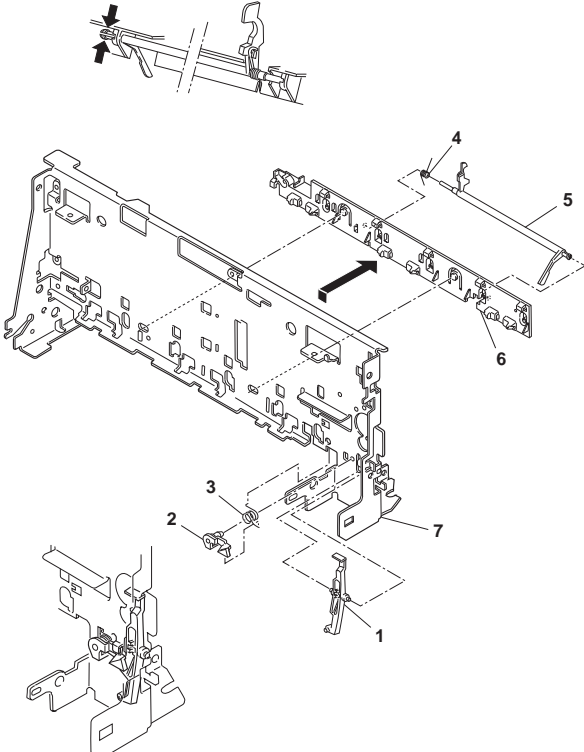
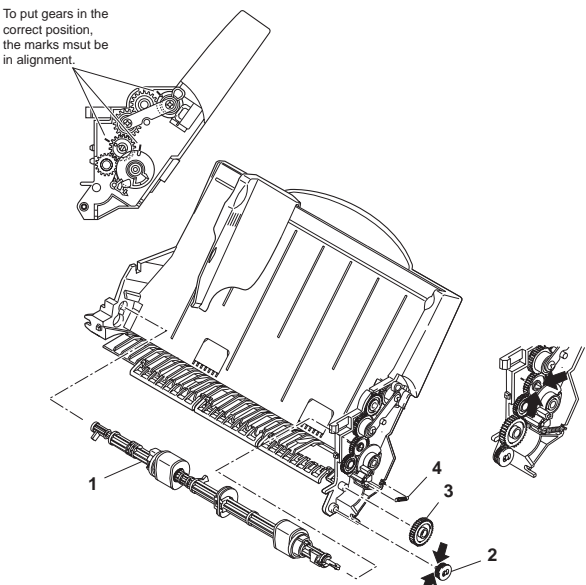
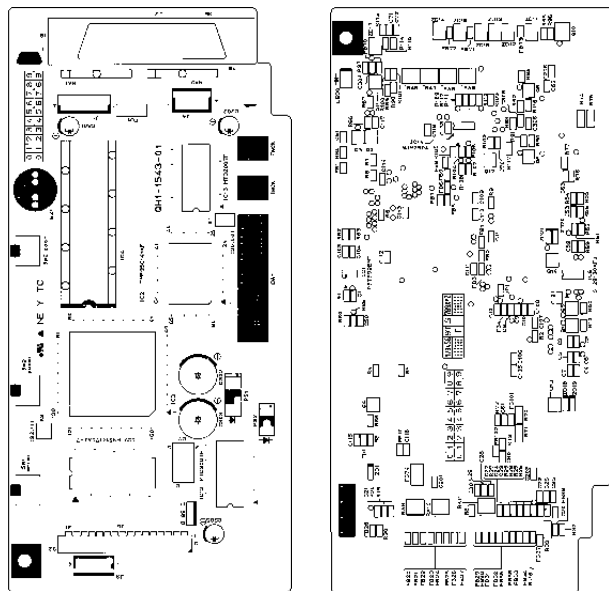
<div>FIGURE 13</div>	<div>PAPER FEED PART (1)</div>	<div>See Page B - 25</div>	<div>FIGURE 14</div>	<div>PAPER FEED PART (2)</div>	<div>See Page B - 27</div>
<div></div>			<div></div>		
<div>FIGURE 15</div>	<div>PRINTER FRAME</div>	<div>See Page B - 29</div>	<div>FIGURE 16</div>	<div>SHEET FEEDER PART</div>	<div>See Page B - 31</div>
<div></div>			<div></div>		

FIGURE 17 LOGIC BOARD COMPONENT

See Page
B - 33

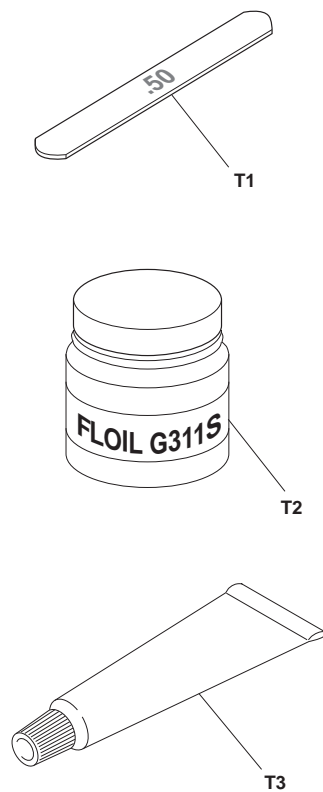


Top View

Bottom View

FIGURE 18 TOOL

See Page
D - 1



This page intentionally left blank

B. PARTS LAYOUT & PARTS LIST

FIGURE 1 TRAY

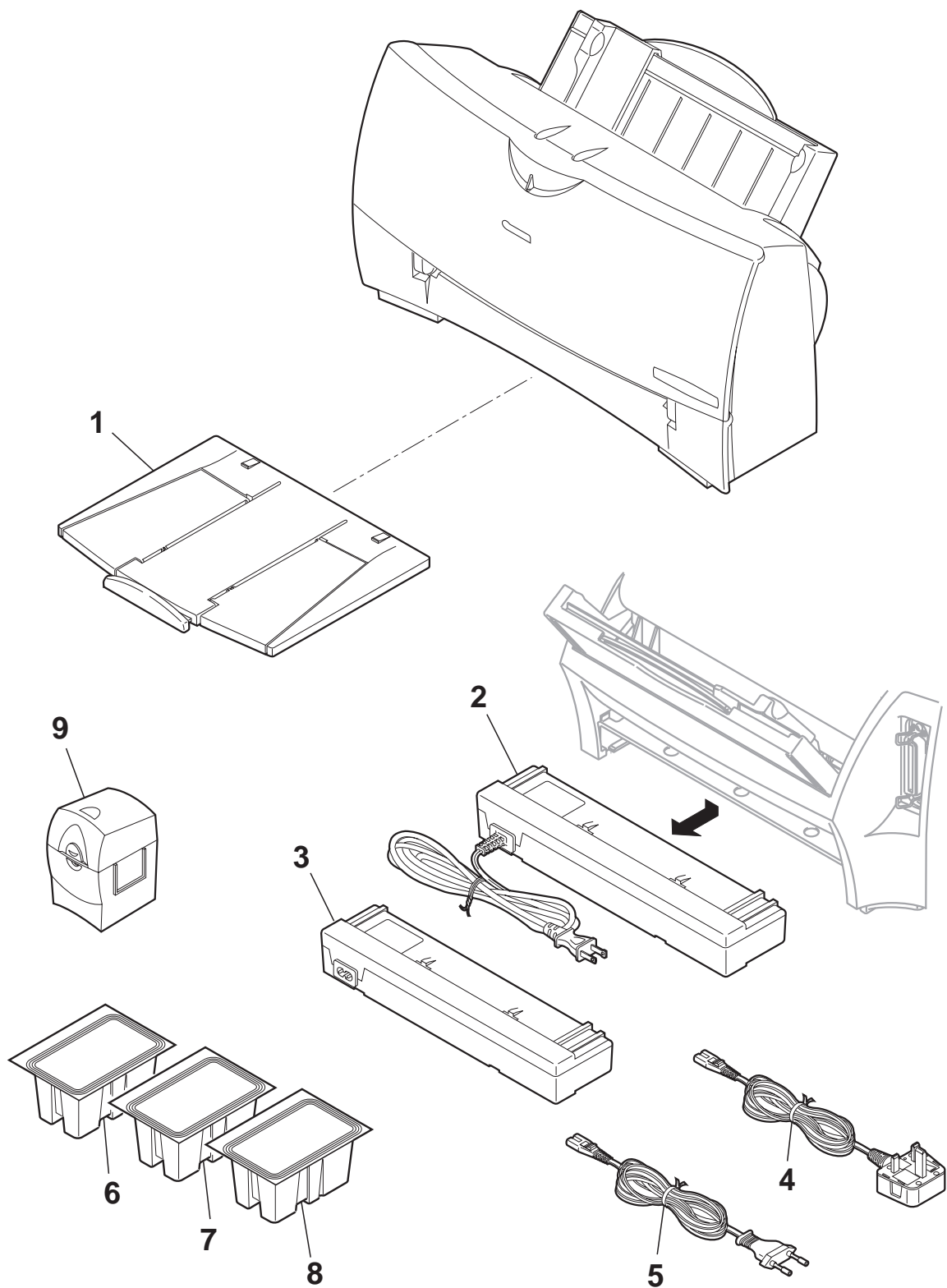


FIGURE & KEY NO.	PART NUMBER	R A N K	Q T Y	DESCRIPTION	REMARKS
1 - 1	QG5-1143-000	N	1	TRAY UNIT	220V-240V (UK) 220V-240V
2	QH3-3251-000	N	1	AC ADAPTER: 120V 50/60HZ	
3	QH3-3252-000	N	1	AC ADAPTER: 220-240V 50HZ	
4	WT3-5061-000		1	CORD, POWER	
5	WT3-5069-000		1	CORD, POWER	
6	NPN		1	BLACK BJ CARTRIDGE PACK	CONSUMABLES
7	NPN		1	COLOR BJ CARTRIDGE PACK	CONSUMABLES
8	NPN		1	PHOTO BJ CARTRIDGE PACK	CONSUMABLES
9	NPN		1	BJ CARTRIDGE CONTAINER	OPTION

FIGURE 2 FRONT COVER

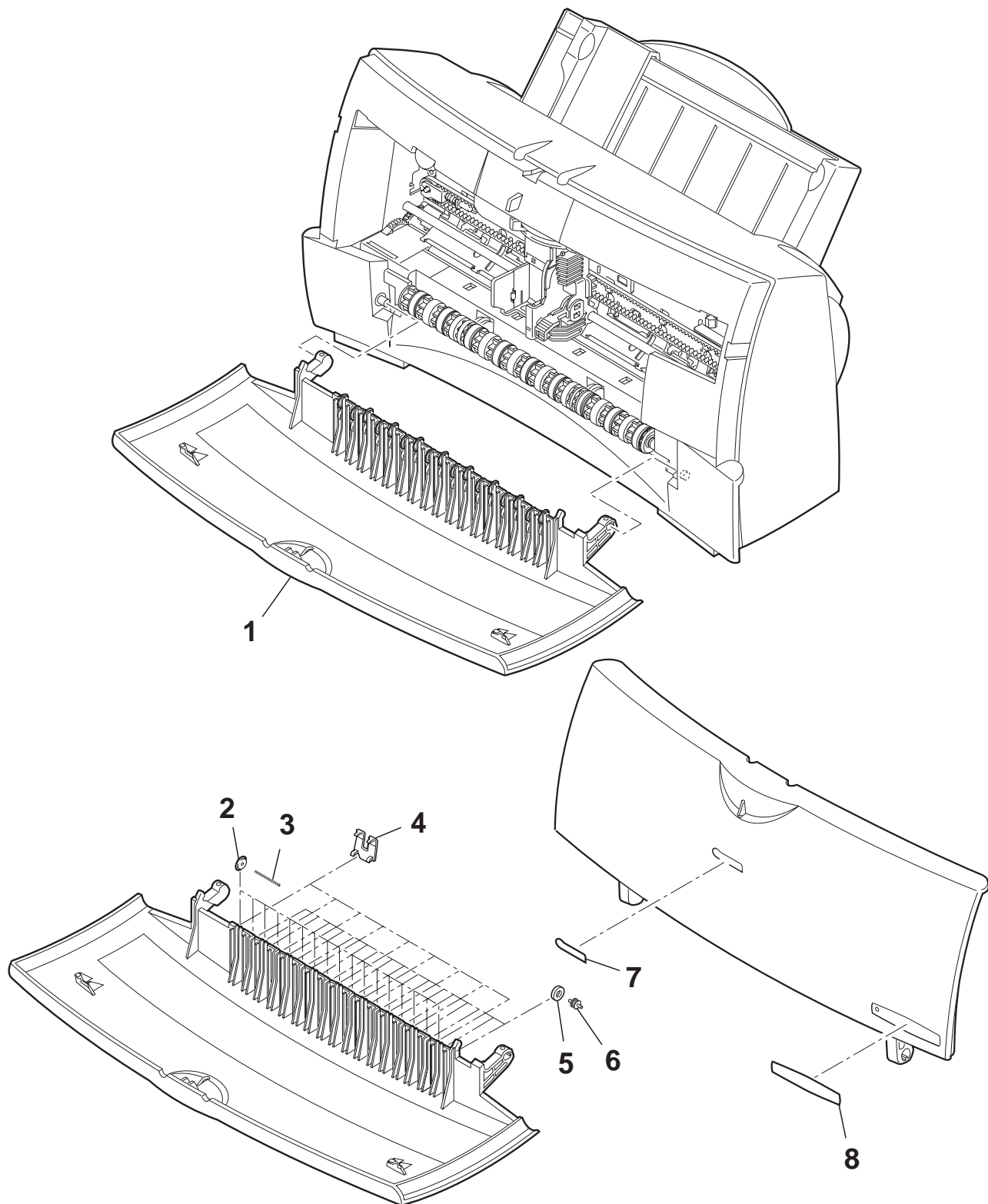


FIGURE & KEY NO.	PART NUMBER	R A N K	Q T Y	DESCRIPTION	REMARKS
2 - 1	QG5-1141-000		1	FRONT COVER UNIT	(WITH SPUR & NAME PLATE)
2	QB1-1952-000		17	SPUR	
3	QB1-3044-000		17	SPUR SHAFT	
4	QB1-3040-000		9	HOLDER, SPUR	
5	QB1-1273-000		17	CLEANER, SPUR	
6	QB1-1274-000		17	ROLLER, CLEANER	
7	QS5-8265-000		1	PLATE, LOGO	
8	QB1-3265-000		1	PLATE, MODEL NAME	

FIGURE 3 INNER COVER

When removing the key No. 1 part,
remove the top claws first.
When reassembling, reassemble
the bottom claws first.

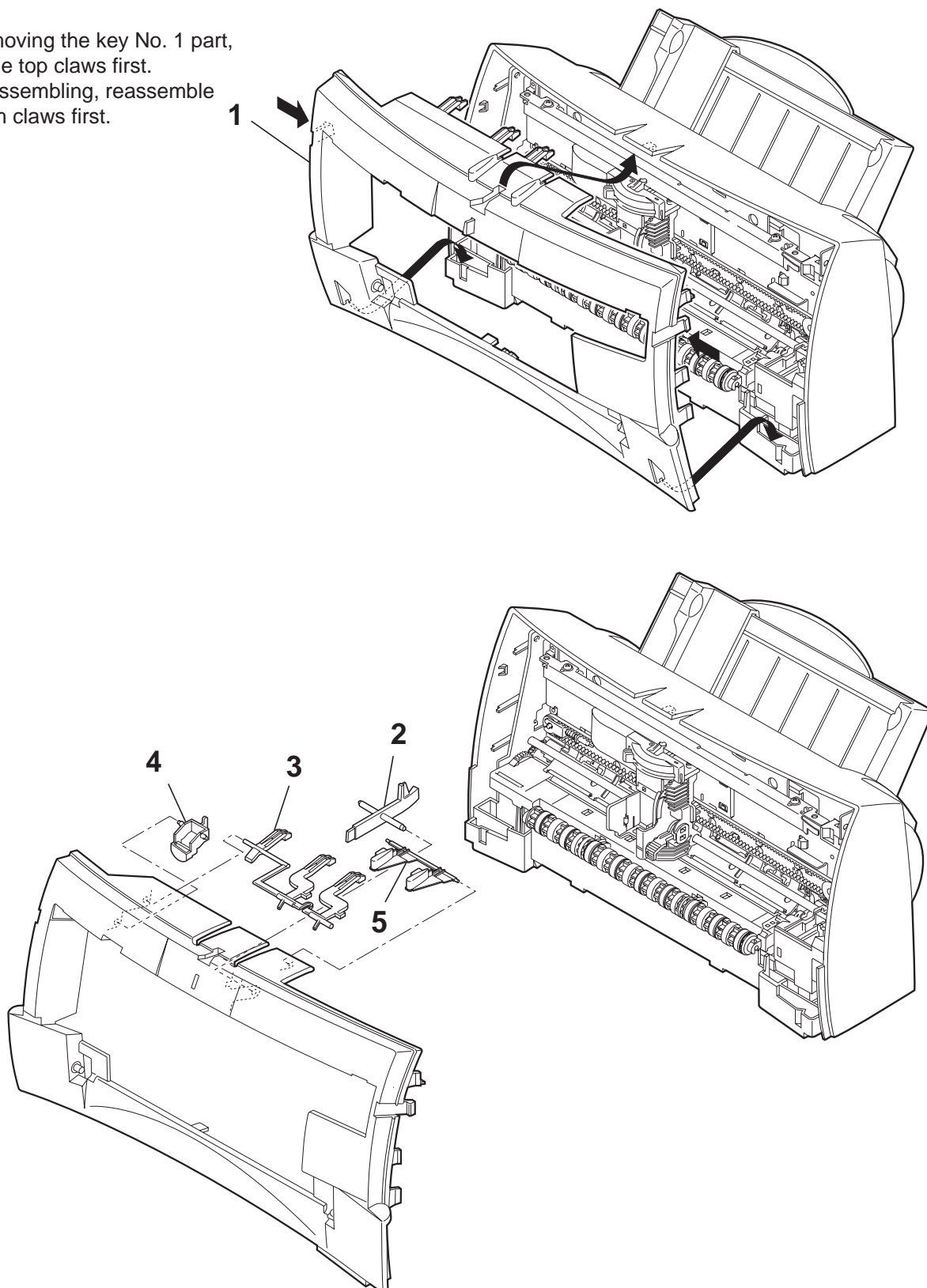


FIGURE & KEY NO.	PART NUMBER	R A N K	Q T Y	DESCRIPTION	REMARKS
3 - 1	QG5-0963-000		1	INNER COVER UNIT	(WITH BUTTON & GUIDE)
2	QB1-2206-000		1	GUIDE, INDICATOR	
3	QB1-2207-000		1	BAR, BUTTON	
4	QB1-3038-000		1	SWITCH, CARTRIDGE	
5	QB1-2205-000		1	BUTTON, PUSH	

FIGURE 4 REAR COVER

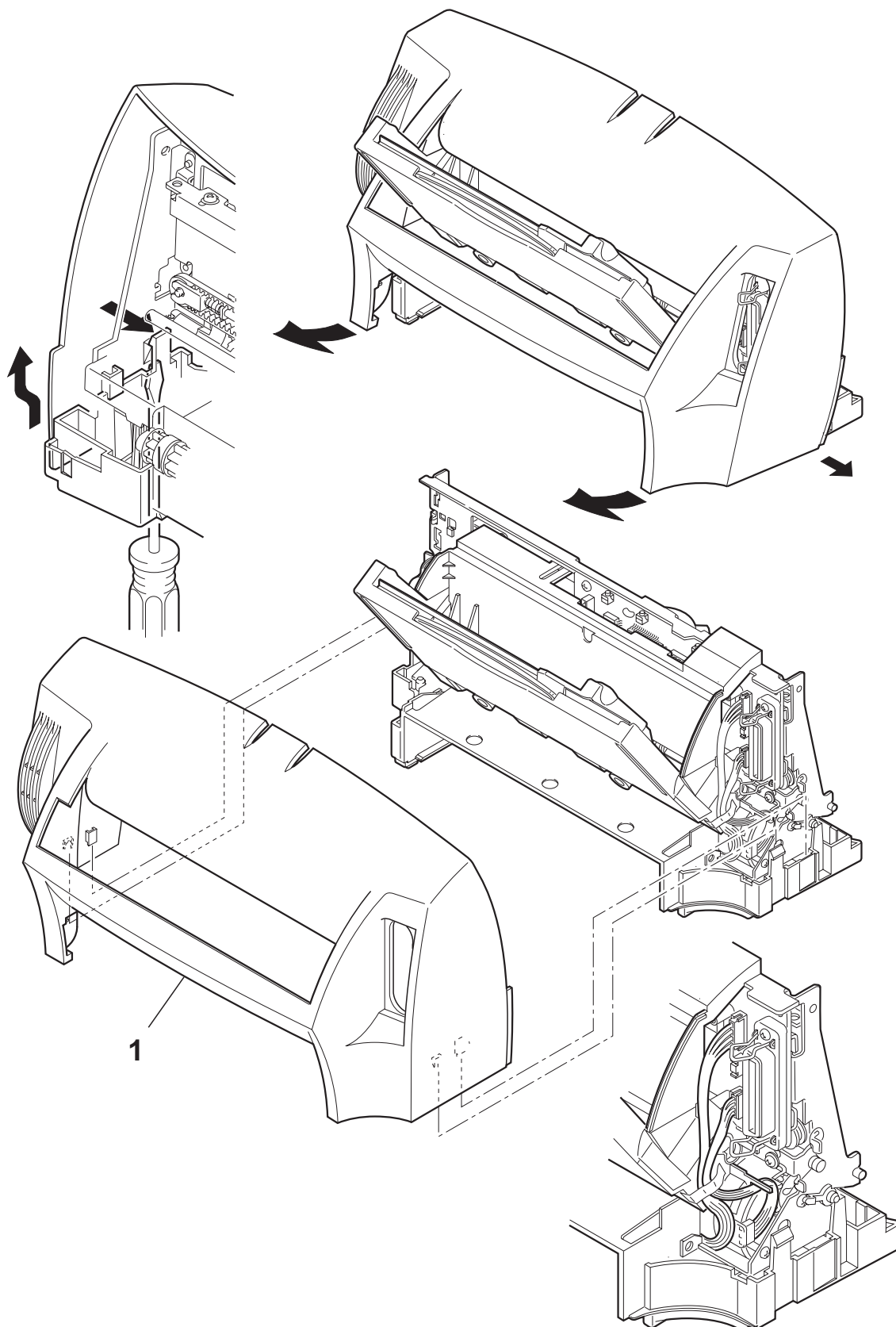


FIGURE & KEY NO.	PART NUMBER	R A N K	Q T Y	DESCRIPTION	REMARKS
4 - 1	QB1-3032-000		1	COVER, REAR	

FIGURE 5 SHEET FEEDER UNIT

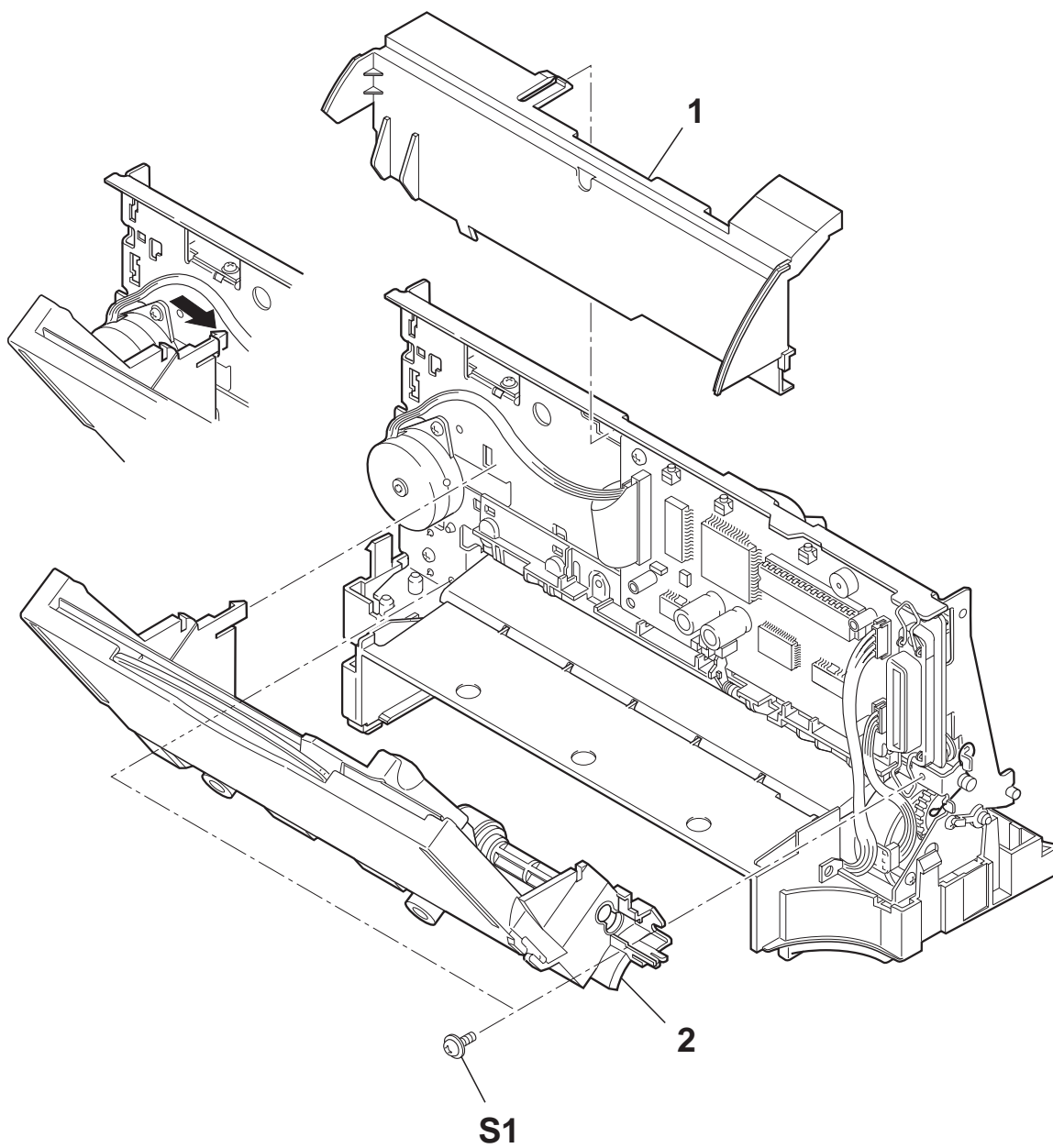


FIGURE & KEY NO.	PART NUMBER	R A N K	Q T Y	DESCRIPTION	REMARKS
5 - 1	QB1-3033-000		1	COVER, LOGIC BOARD	
2	QG5-0959-020		1	SHEET FEEDER UNIT	

FIGURE 6 ELECTRICAL PARTS

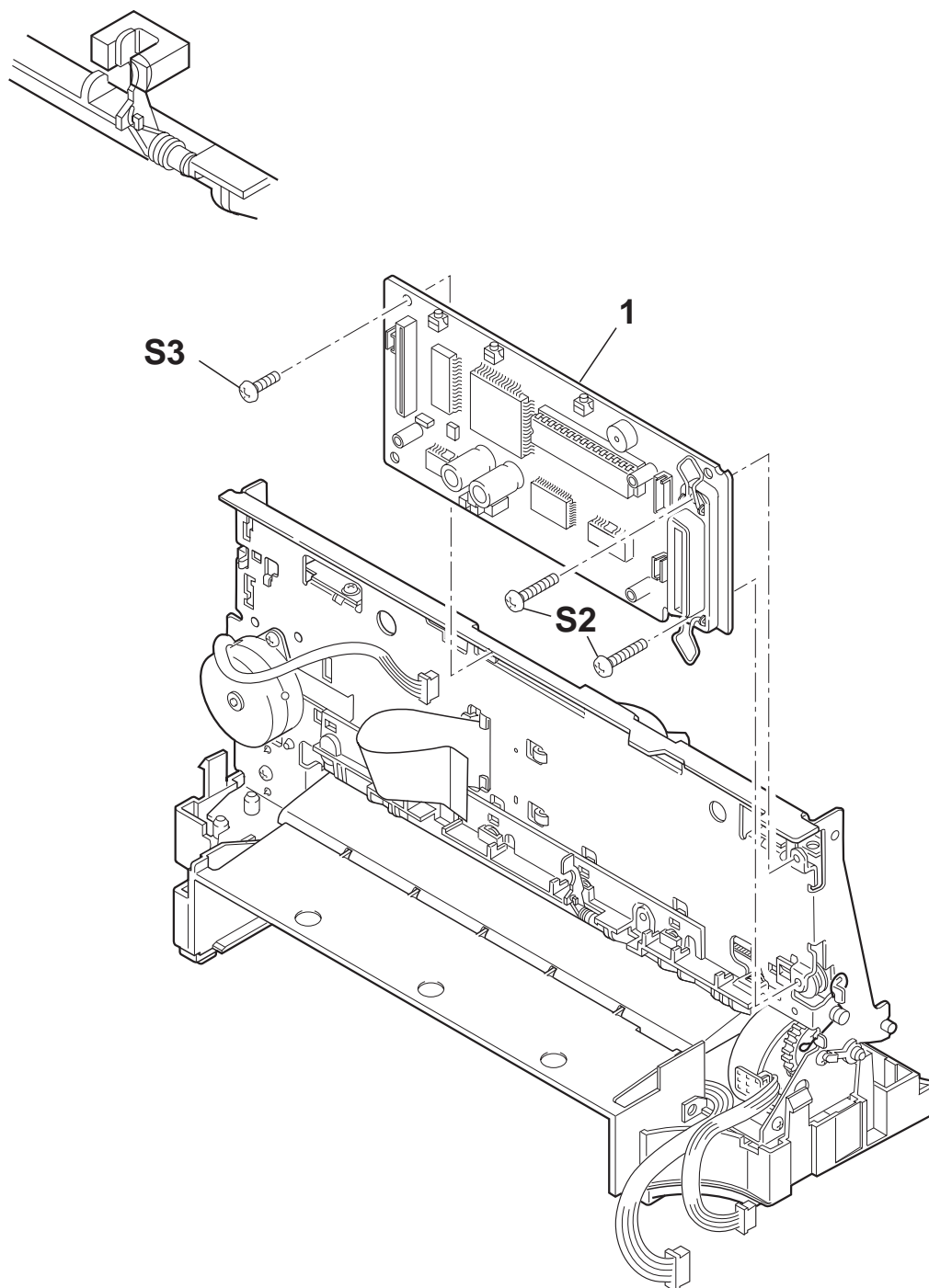


FIGURE & KEY NO.	PART NUMBER	R A N K	Q T Y	DESCRIPTION	REMARKS
6 - 1	QG2-2984-000		1	LOGIC BOARD ASS'Y	

FIGURE 7 BOTTOM CASE & PURGE UNIT

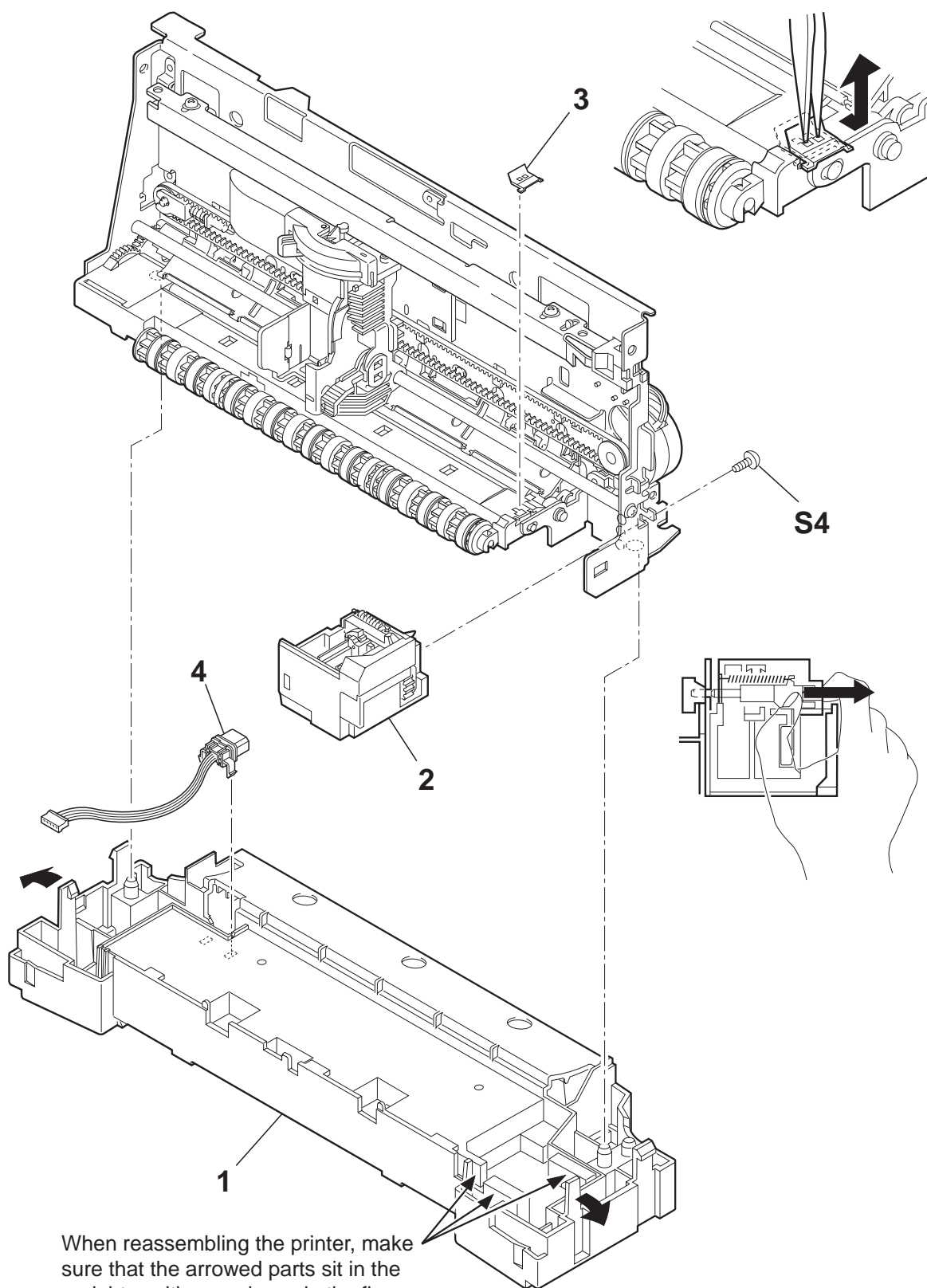


FIGURE & KEY NO.	PART NUMBER	R A N K	Q T Y	DESCRIPTION	REMARKS
7 - 1	QG5-1140-000		1	BOTTOM CASE UNIT	(WITH FOOT)
2	QG5-1090-050		1	PURGE UNIT	(WITH SPRING)
3	QB1-1045-000		1	PLATE, PAPER GUIDE	
4	QG2-2781-000		1	DC CONNECTOR ASS'Y	(WITH CABLE)

FIGURE 8 WASTE INK ABSORBER

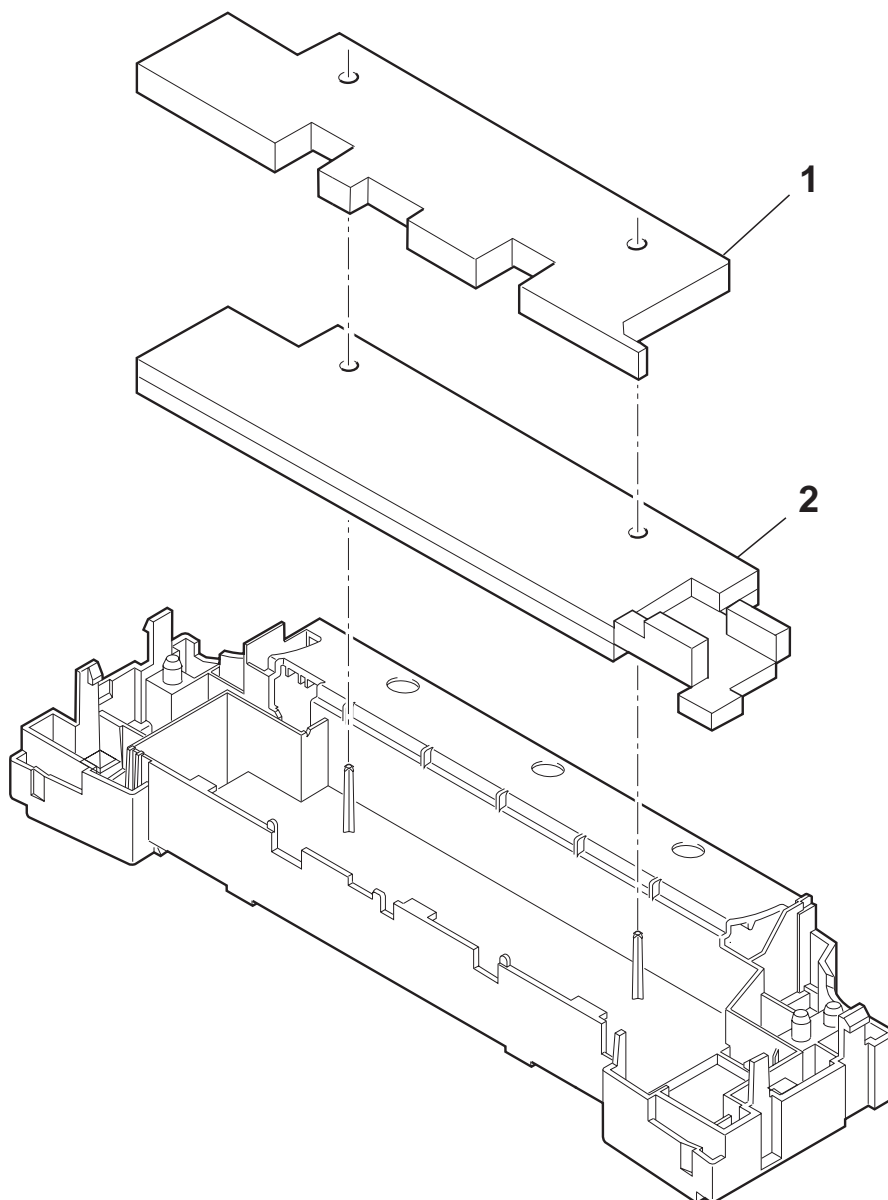


FIGURE & KEY NO.	PART NUMBER	R A N K	Q T Y	DESCRIPTION	REMARKS
8 - 1	QB1-2201-020		1	ABSORBER, INK	
2	QB1-2200-020		1	ABSORBER, INK	

FIGURE 9 CARRIAGE PART (1)

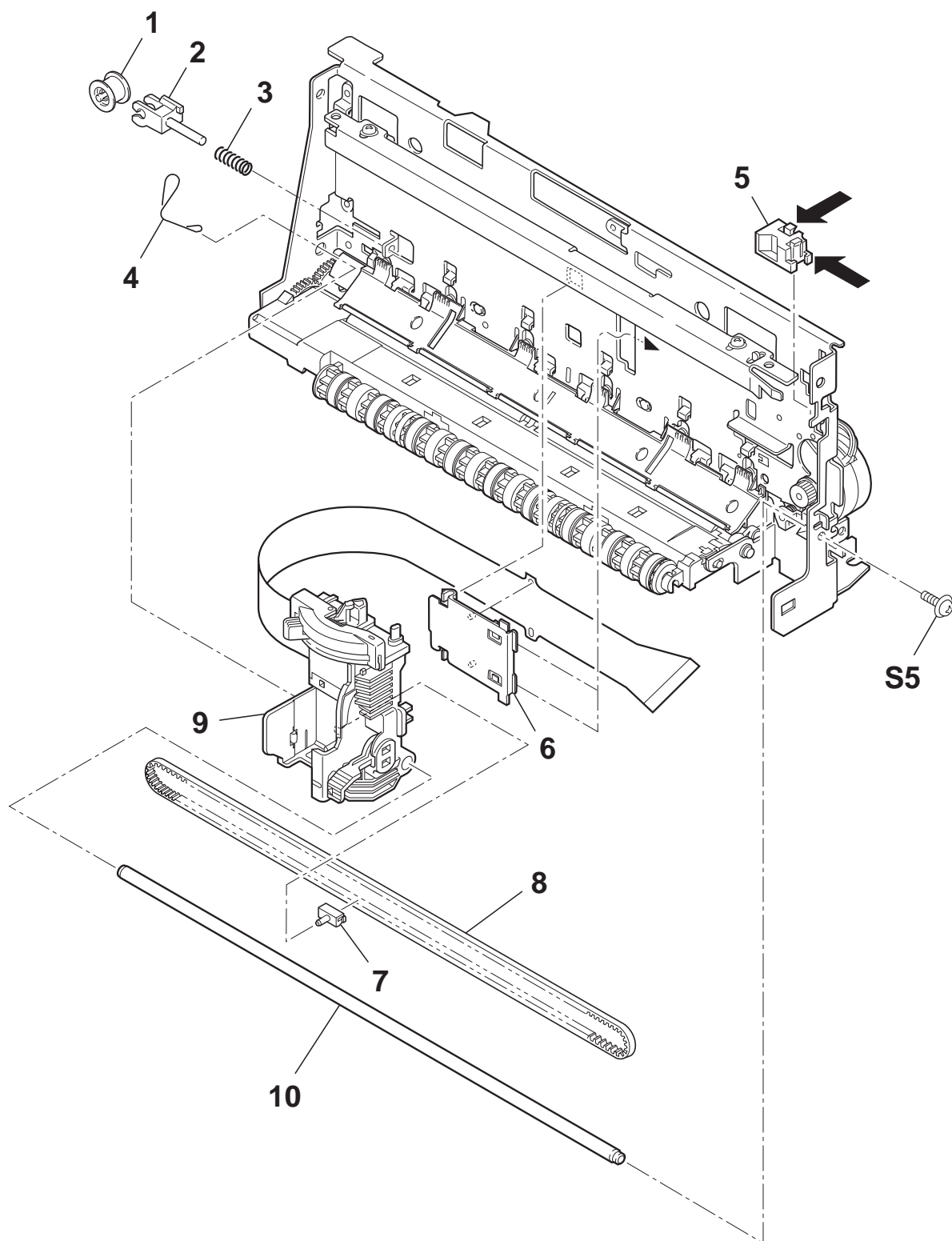


FIGURE & KEY NO.	PART NUMBER	R A N K	Q T Y	DESCRIPTION	REMARKS
9 - 1	QB1-0501-020		1	ROLLER, IDLER	
2	QB1-0502-000		1	BRACKET, IDLER	
3	QB1-3274-000		1	SPRING, COIL	
4	QB1-1229-000		1	CLIP, SHAFT	
5	QB1-0972-000		1	GUIDE, CORNER	
6	QB1-0497-020		1	HOLDER, CARRIAGE RIBBON CABLE	
7	QB1-2250-020		1	HOLDER, BELT	
8	QB1-0991-000		1	BELT, CARRIAGE	
9	QG5-1144-000		1	CARRIAGE UNIT	
10	QB1-1995-000	N	1	SHAFT, CARRIAGE	

FIGURE 10 CARRIAGE PART (2)

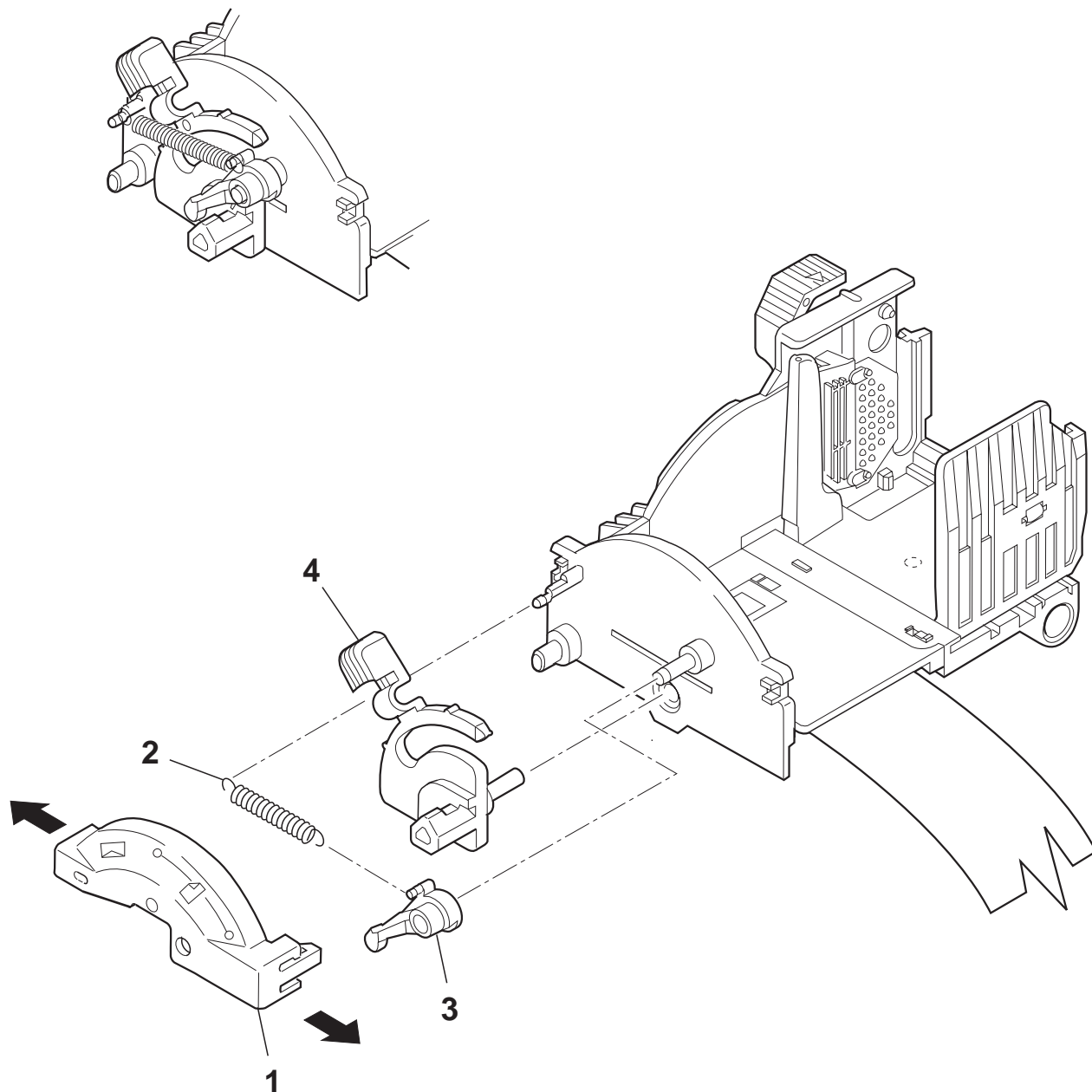


FIGURE & KEY NO.	PART NUMBER	R A N K	Q T Y	DESCRIPTION	REMARKS
10 - 1	QB1-2918-020		1	COVER, CARRIAGE TOP	
2	QB1-2925-000		1	SPRING, HOOK END COIL	
3	QB1-2917-000		1	CAM, TENSION	
4	QB1-3271-000		1	LEVER, FORMS THICKNESS	

FIGURE 11 CARRIAGE PART (3)

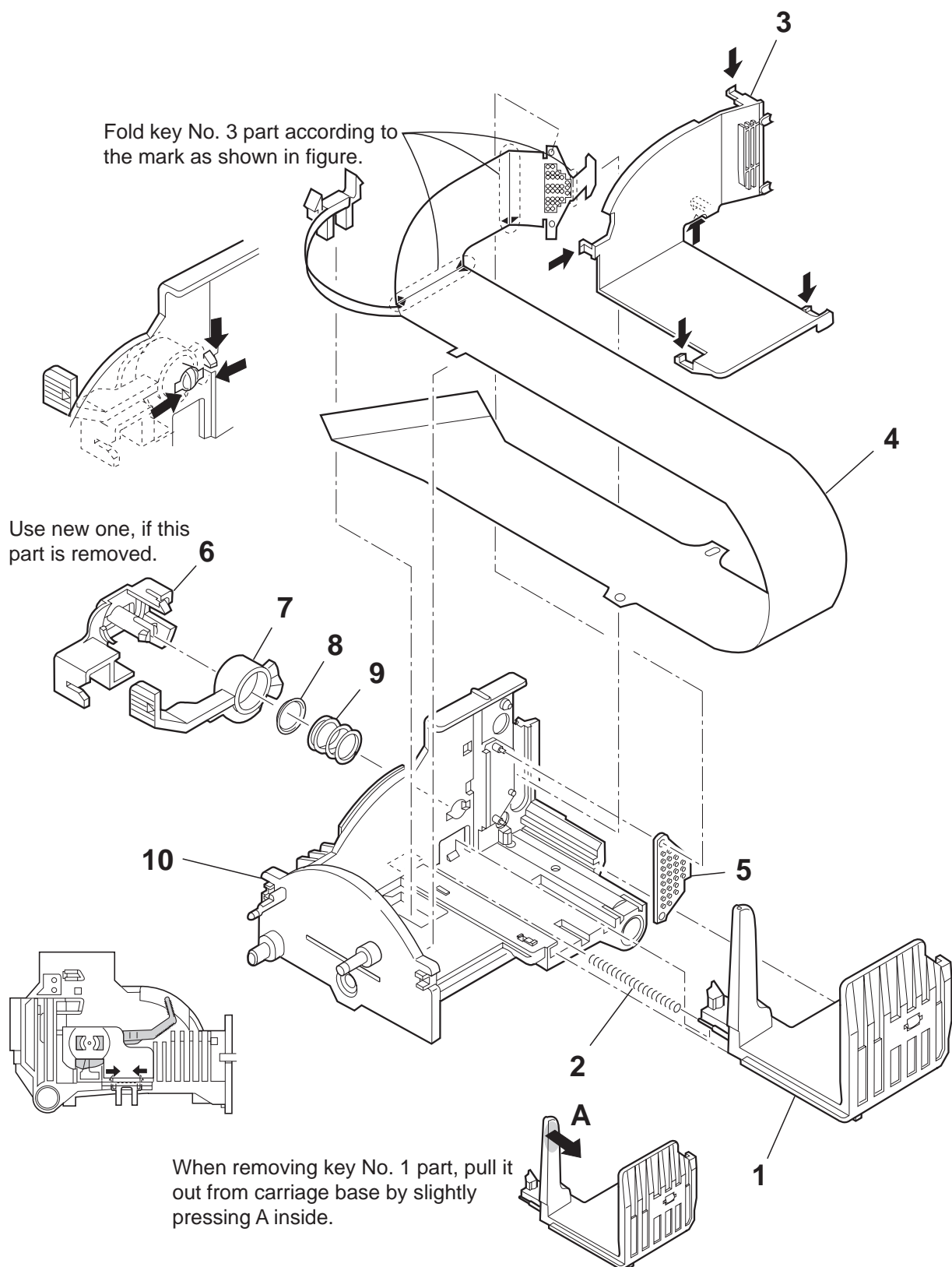


FIGURE & KEY NO.	PART NUMBER	R A N K	Q T Y	DESCRIPTION	REMARKS
11- 1	QG5-1076-000		1	CARTRIDGE HOLDER UNIT	
2	QB1-1282-000		1	SPRING, COIL	
3	QB1-0984-000		1	GUIDE, RIBBON CABLE	
4	QG2-2698-000		1	CARRIAGE, RIBBON CABLE ASS'Y	
5	QB1-0985-000		1	PAD, CONTACT	
6	QB1-0993-020		1	COVER, LEVER	
7	QB1-0986-040		1	LEVER, LOCKING	
8	QB1-1283-000		1	STOPPER	
9	QB1-0987-020		1	SPRING, COIL	
10	QB1-3171-000		1	BASE, CARRIAGE	

FIGURE 12 MOTORS

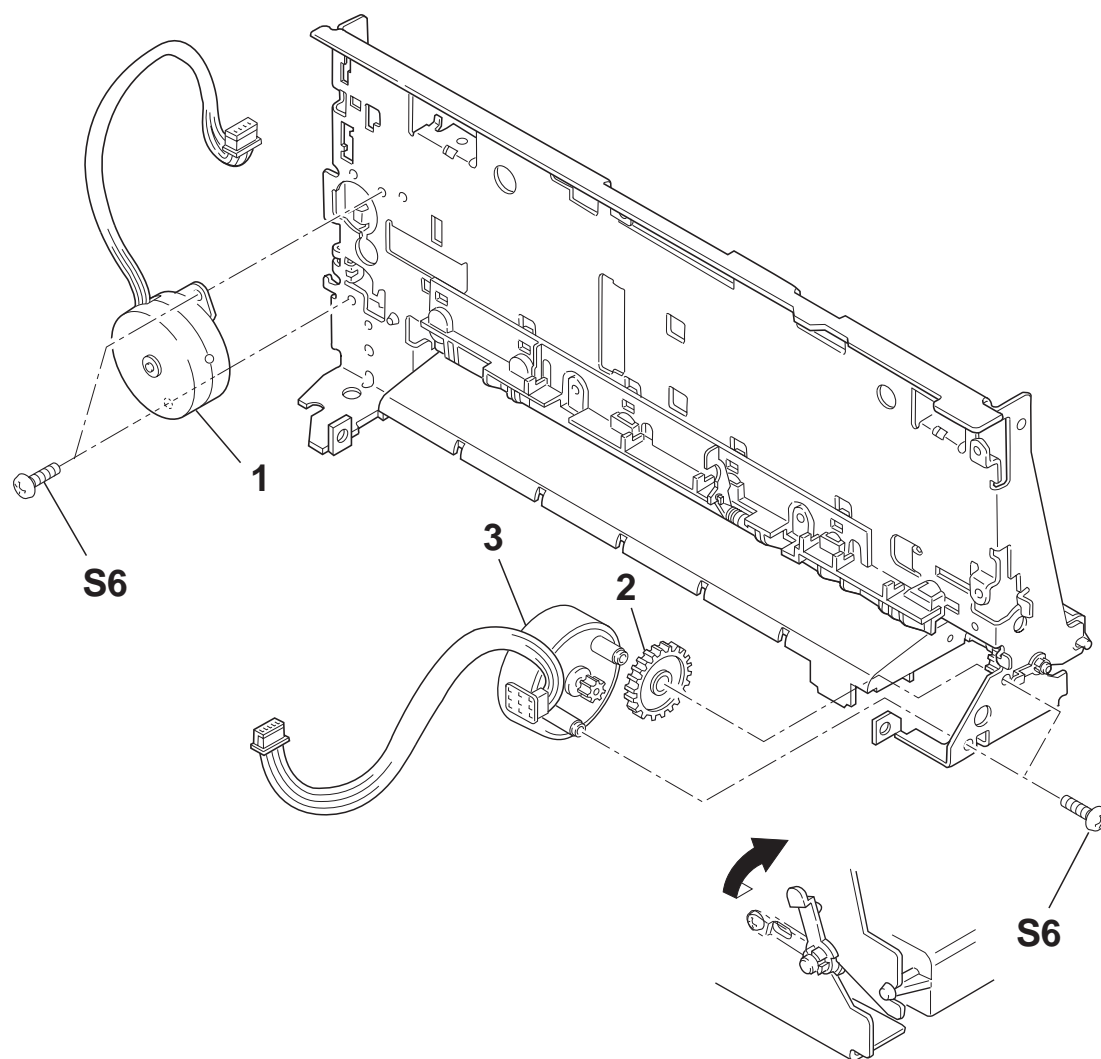


FIGURE 13 PAPER FEED PART (1)

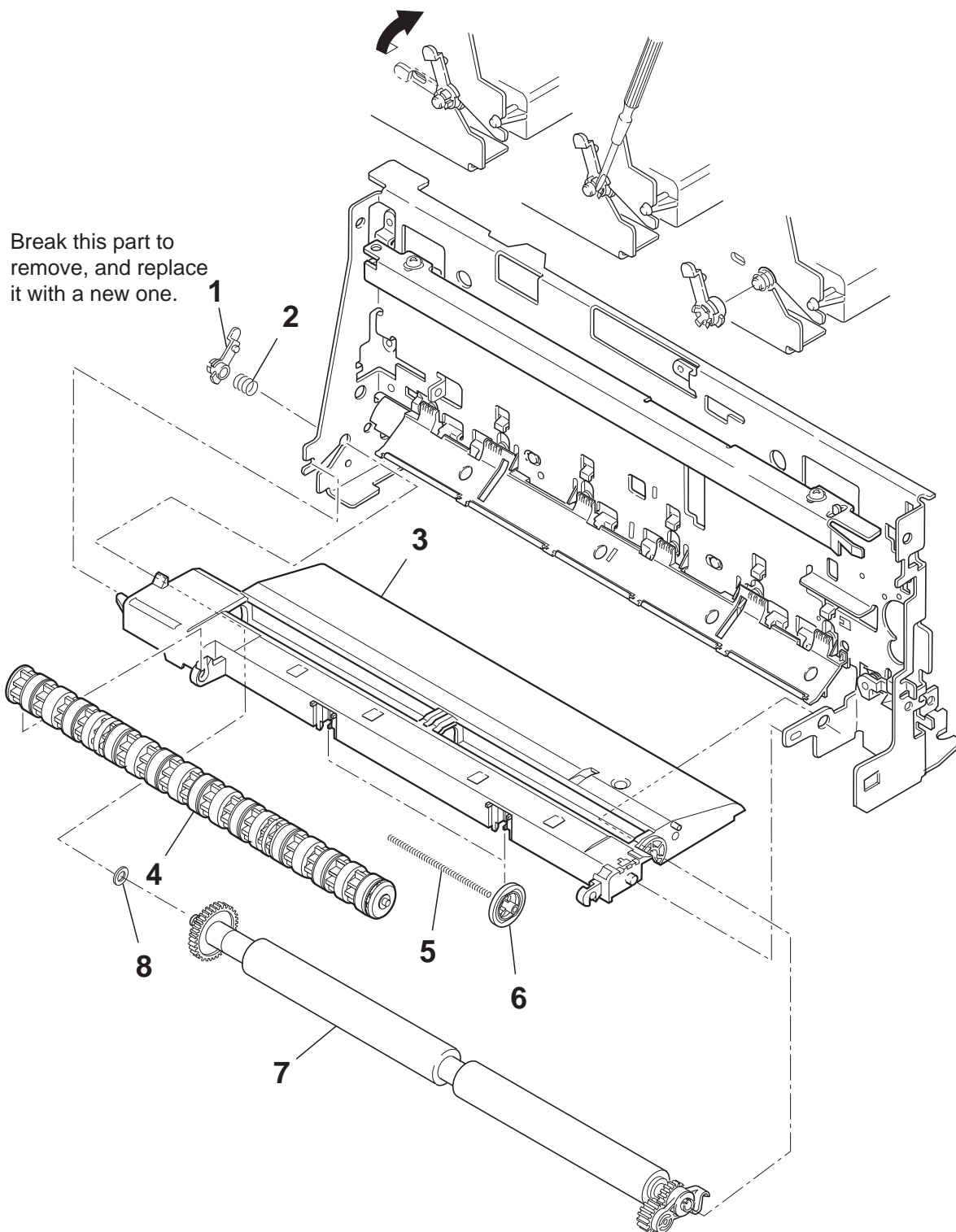


FIGURE & KEY NO.	PART NUMBER	R A N K	Q T Y	DESCRIPTION	REMARKS
13 - 1	QB1-0417-000		1	BUSHING	
2	QB1-0423-000		1	SPRING, COIL	
3	QB1-3275-000		1	PLATEN	
4	QG5-0965-000		1	EJECT ROLLER ASS'Y	
5	QB1-1278-000		2	SHAFT, ROLLER	
6	QB1-1965-000		2	ROLLER, TRANSMISSION	
7	QG5-0749-000		1	FEED ROLLER UNIT	
8	QB1-0622-000		1	WASHER, PLAIN	

FIGURE 14 PAPER FEED PART (2)

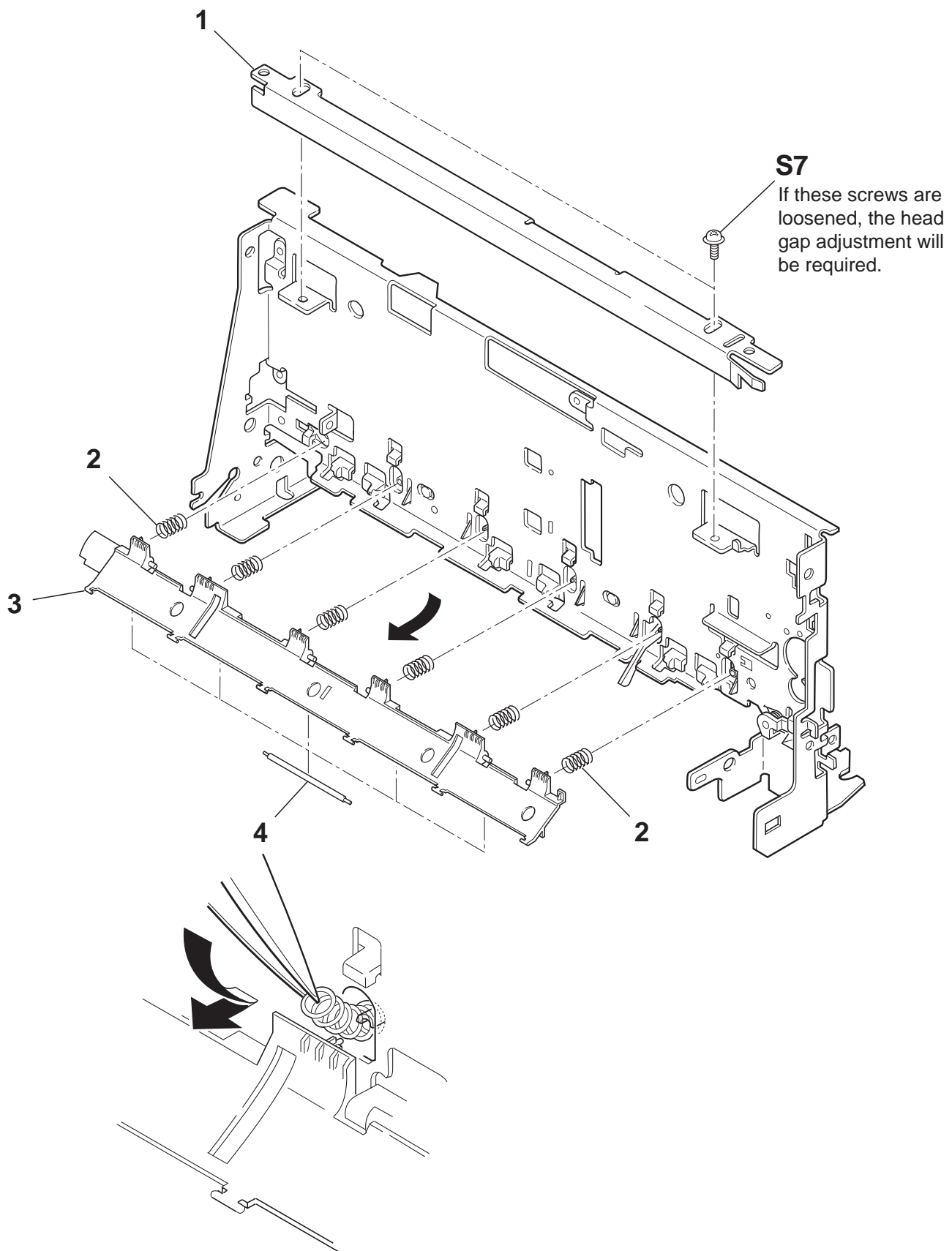


FIGURE & KEY NO.	PART NUMBER	R A N K	Q T Y	DESCRIPTION	REMARKS
14 - 1	QB1-2915-000	N	1	FRAME, CARRIAGE GUIDE	
2	QB1-0664-000		6	SPRING, COIL	
3	QB1-0409-000		1	PLATE, PRESSURE	
4	QB1-0684-000		5	ROLLER, PRESSURE	

FIGURE 15 PRINTER FRAME

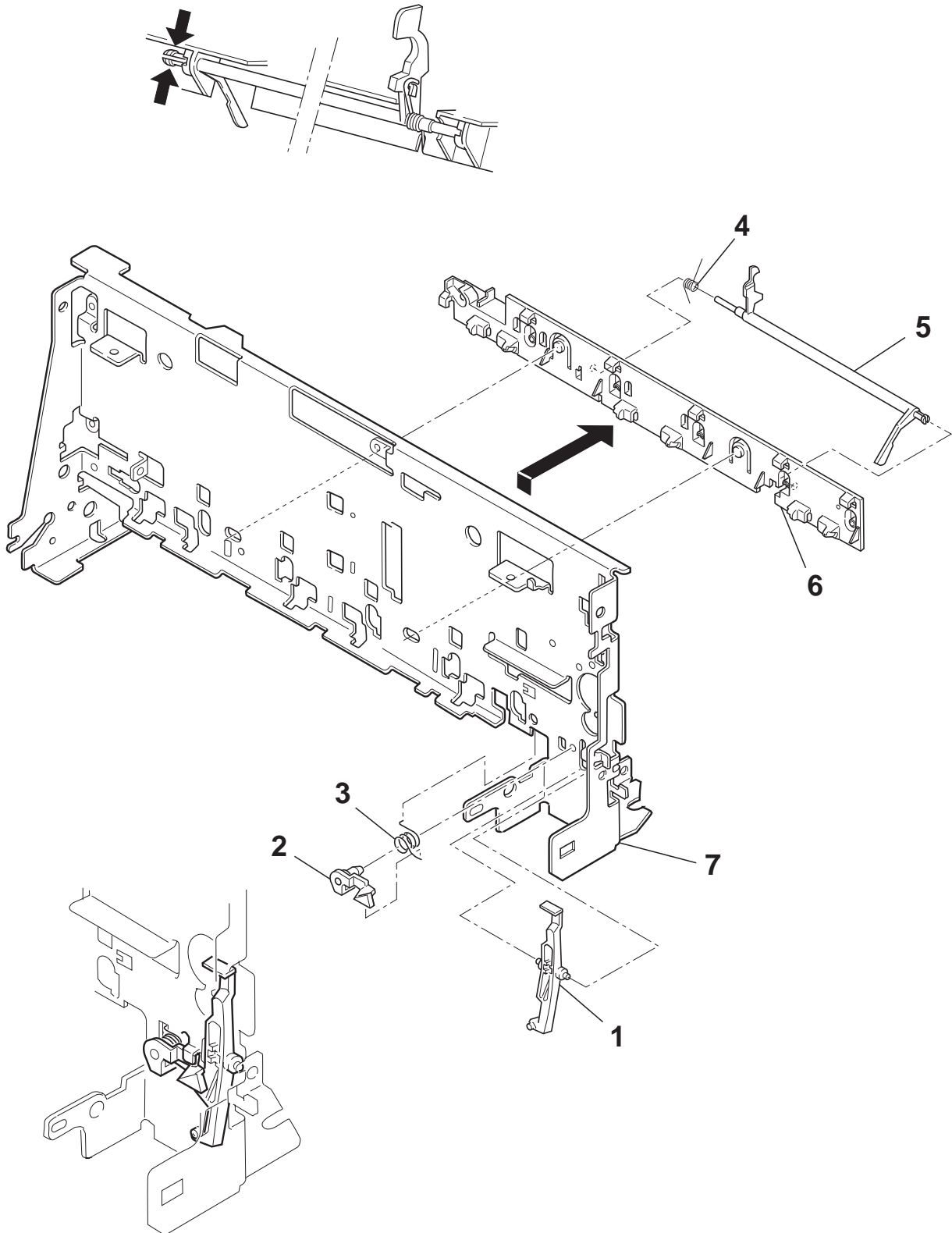


FIGURE & KEY NO.	PART NUMBER	R A N K	Q T Y	DESCRIPTION	REMARKS
15 - 1	QB1-0974-000		1	ARM, SENSOR	
2	QB1-0414-000		1	HOOK, CARRIAGE	
3	QB1-0415-000		1	SPRING, TORSION	
4	QB1-0412-000		1	SPRING, TORSION	
5	QB1-0973-000		1	ARM, PAPER SENSOR	
6	QB1-2240-000	N	1	GUIDE, PRESSURE PLATE	
7	QB1-0971-060		1	FRAME, PRINTER	

FIGURE 16 SHEET FEEDER PART

To put gears in the correct position, the marks must be in alignment.

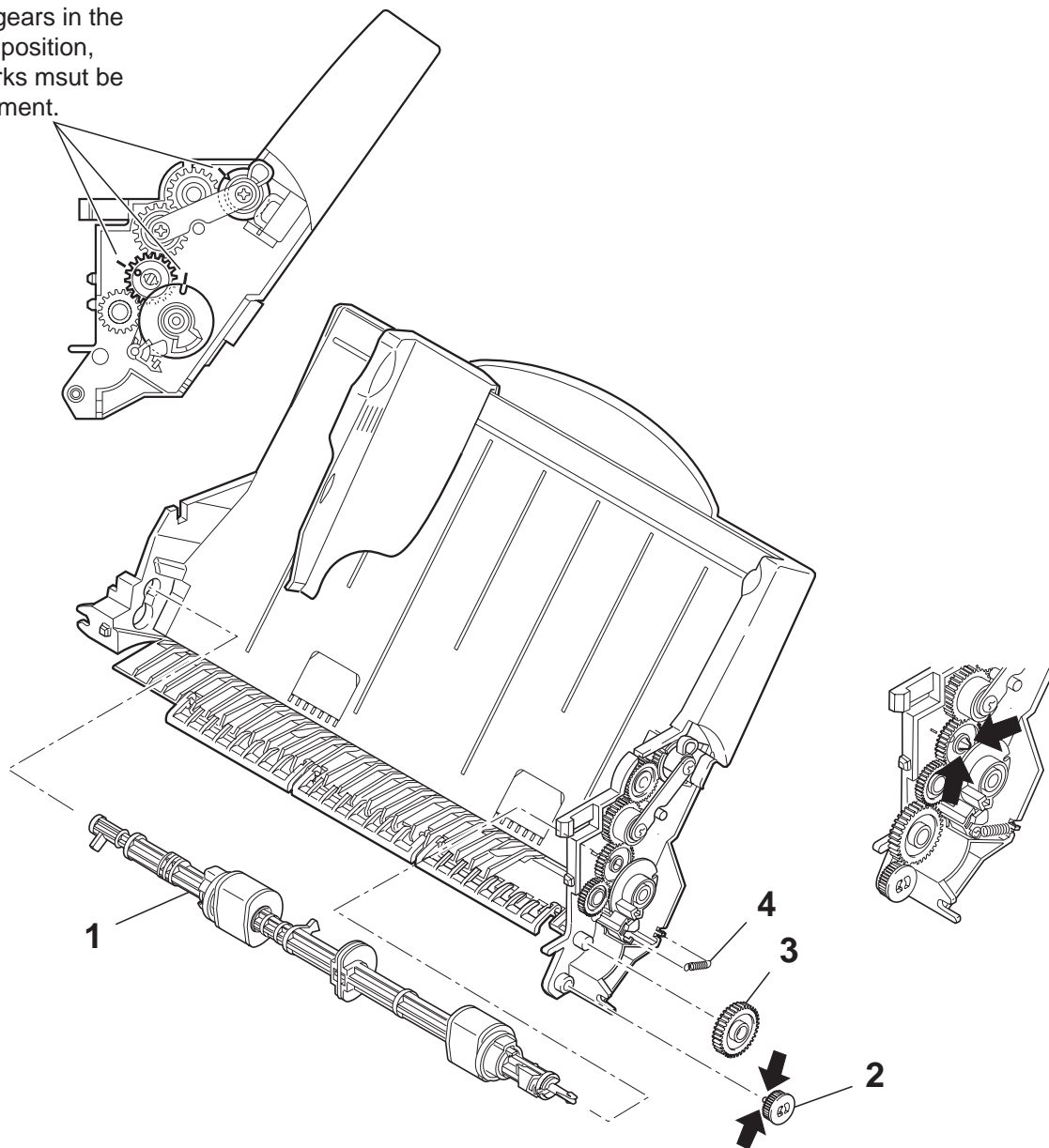


FIGURE & KEY NO.	PART NUMBER	R A N K	Q T Y	DESCRIPTION	REMARKS
16 - 1	QG5-0960-000		1	PICK-UP ROLLER UNIT	
2	QB1-0485-000		1	GEAR, TRANSMISSION	
3	QB1-0480-000		1	GEAR, TRANSMISSION	
4	QB1-2194-000		1	SPRING, HOOK END COIL	

FIGURE & KEY NO.	PART NUMBER	R A N K	Q T Y	DESCRIPTION	REMARKS
17 - BZ 1	WR1-5057-000	N	1	BEEPER: PKM13EPY-4000-TF01	
C 1	VW4-1835-102	N	1	CAPACITOR, CERAMIC: 1000PF 50V	
C 2	VW4-1234-101	N	1	CAPACITOR,CHIP,CERAMIC: 100 PF 50V	
C 3	VW4-1234-101	N	1	CAPACITOR,CHIP,CERAMIC: 100 PF 50V	
C 4	VW4-1234-101	N	1	CAPACITOR,CHIP,CERAMIC: 100 PF 50V	
C 5	VW4-1234-101	N	1	CAPACITOR,CHIP,CERAMIC: 100 PF 50V	
C 6	VW4-1234-101	N	1	CAPACITOR,CHIP,CERAMIC: 100 PF 50V	
C 7	VW4-1027-104	N	1	CAPACITOR, CERAMIC: 0.1UF 25V	
C 8	VW4-1037-103	N	1	CAPACITOR,ML,CERAMIC:0.01UF 50V	
C 9	VW4-1027-104	N	1	CAPACITOR, CERAMIC: 0.1UF 25V	
C 10	VW4-1835-102	N	1	CAPACITOR, CERAMIC: 1000PF 50V	
C 11	VW4-1027-104	N	1	CAPACITOR, CERAMIC: 0.1UF 25V	
C 12	VW4-1234-330	N	1	CAPACITOR, CHIP, CARAMIC: 33PF 50V	
C 20	VW4-1234-330	N	1	CAPACITOR, CHIP, CARAMIC: 33PF 50V	
C 21	VW4-1234-471	N	1	CAPACITOR, CHIP: 470PF 50V	
C 22	VW4-1037-103	N	1	CAPACITOR,ML,CERAMIC:0.01UF 50V	
C 23	VW4-1234-330	N	1	CAPACITOR, CHIP, CARAMIC: 33PF 50V	
C 24	VW4-1234-330	N	1	CAPACITOR, CHIP, CARAMIC: 33PF 50V	
C 25	VW4-1234-330	N	1	CAPACITOR, CHIP, CARAMIC: 33PF 50V	
C 26	VW4-1234-330	N	1	CAPACITOR, CHIP, CARAMIC: 33PF 50V	
C 27	VW4-1234-330	N	1	CAPACITOR, CHIP, CARAMIC: 33PF 50V	
C 28	VW4-1234-330	N	1	CAPACITOR, CHIP, CARAMIC: 33PF 50V	
C 29	VW4-1234-330	N	1	CAPACITOR, CHIP, CARAMIC: 33PF 50V	
C 30	VW4-1234-330	N	1	CAPACITOR, CHIP, CARAMIC: 33PF 50V	
C 50	VW4-1037-103	N	1	CAPACITOR,ML,CERAMIC:0.01UF 50V	
C 51	VW4-1037-103	N	1	CAPACITOR,ML,CERAMIC:0.01UF 50V	
C 52	VW4-1234-101	N	1	CAPACITOR,CHIP,CERAMIC: 100 PF 50V	
C 53	VW4-1234-101	N	1	CAPACITOR,CHIP,CERAMIC: 100 PF 50V	
C 60	VW4-1027-104	N	1	CAPACITOR, CERAMIC: 0.1UF 25V	
C 61	VW4-1835-472	N	1	CAPACITOR,CERAMIC: 4700PF 50V	
C 62	VW4-1027-104	N	1	CAPACITOR, CERAMIC: 0.1UF 25V	
C 63	VW4-1835-472	N	1	CAPACITOR,CERAMIC: 4700PF 50V	
C 70	VW4-1037-103	N	1	CAPACITOR,ML,CERAMIC:0.01UF 50V	
C 71	VW4-1234-101	N	1	CAPACITOR,CHIP,CERAMIC: 100 PF 50V	
C 72	VW4-1234-101	N	1	CAPACITOR,CHIP,CERAMIC: 100 PF 50V	
C103	VW4-1027-104	N	1	CAPACITOR, CERAMIC: 0.1UF 25V	
C104	VW4-1835-102	N	1	CAPACITOR, CERAMIC: 1000PF 50V	
C105	VW4-1027-104	N	1	CAPACITOR, CERAMIC: 0.1UF 25V	
C106	VW4-1835-102	N	1	CAPACITOR, CERAMIC: 1000PF 50V	
C107	VW4-1027-104	N	1	CAPACITOR, CERAMIC: 0.1UF 25V	
C108	VW4-1835-102	N	1	CAPACITOR, CERAMIC: 1000PF 50V	
C109	VW4-1027-104	N	1	CAPACITOR, CERAMIC: 0.1UF 25V	
C110	VW4-1027-104	N	1	CAPACITOR, CERAMIC: 0.1UF 25V	
C111	VW4-1027-104	N	1	CAPACITOR, CERAMIC: 0.1UF 25V	
C112	VW4-1027-104	N	1	CAPACITOR, CERAMIC: 0.1UF 25V	

FIGURE & KEY NO.	PART NUMBER	R A N K	Q T Y	DESCRIPTION	REMARKS
C113	VW4-1027-104	N	1	CAPACITOR, CERAMIC: 0.1UF 25V	
C114	VW4-1027-104	N	1	CAPACITOR, CERAMIC: 0.1UF 25V	
C115	VW4-1027-104	N	1	CAPACITOR, CERAMIC: 0.1UF 25V	
C116	VW4-1835-102	N	1	CAPACITOR, CERAMIC: 1000PF 50V	
C117	VW4-1835-102	N	1	CAPACITOR, CERAMIC: 1000PF 50V	
C118	VW4-1835-102	N	1	CAPACITOR, CERAMIC: 1000PF 50V	
C121	VW4-1027-104	N	1	CAPACITOR, CERAMIC: 0.1UF 25V	
C133	VW4-1027-104	N	1	CAPACITOR, CERAMIC: 0.1UF 25V	
C201	VW4-1835-102	N	1	CAPACITOR, CERAMIC: 1000PF 50V	
C202	VC7-0780-107	N	1	CAPACITOR, AL-EL: 100UF 35V	
C203	VW4-2037-104	N	1	CAPACITOR, CHIP, CERAMIC: 0.1UF 50V	
C205	VC7-0780-107	N	1	CAPACITOR, AL-EL: 100UF 35V	
C206	VW4-2037-104	N	1	CAPACITOR, CHIP, CERAMIC: 0.1UF 50V	
C301	VC7-0780-107	N	1	CAPACITOR, AL-EL: 100UF 35V	
C302	VC7-0780-108	N	1	CAPACITOR, AL-EL: 1000UF 35V	
C303	VC7-0780-108	N	1	CAPACITOR, AL-EL: 1000UF 35V	
C304	VW4-1027-104	N	1	CAPACITOR, CERAMIC: 0.1UF 50V	
C305	VW4-2037-104	N	1	CAPACITOR, CHIP, CERAMIC: 0.1UF 50V	
C306	VW4-2037-104	N	1	CAPACITOR, CHIP, CERAMIC: 0.1UF 50V	
FB 1	WE8-5583-000	N	1	FERRITE, BEADS: N1608Z800T01	
FB 2	WE8-5583-000	N	1	FERRITE, BEADS: N1608Z800T01	
FB 3	WE8-5583-000	N	1	FERRITE, BEADS: N1608Z800T01	
FB 4	WE8-5583-000	N	1	FERRITE, BEADS: N1608Z800T01	
FB 5	WE8-5582-000	N	1	FERRITE, BEADS: N1608Z301T01	
FB 6	WE8-5582-000	N	1	FERRITE, BEADS: N1608Z301T01	
FB 7	WE8-5582-000	N	1	FERRITE, BEADS: N1608Z301T01	
FB 8	WE8-5582-000	N	1	FERRITE, BEADS: N1608Z301T01	
FB 9	WE8-5582-000	N	1	FERRITE, BEADS: N1608Z301T01	
FB 10	WE8-5362-000	N	1	FERRITE, BEADS: N1608Z300-01	
FB 20	WE8-5581-000	N	1	FERRITE, BEADS: N1608Z102T01	
FB 21	WE8-5581-000	N	1	FERRITE, BEADS: N1608Z102T01	
FB 22	WE8-5581-000	N	1	FERRITE, BEADS: N1608Z102T01	
FB 23	WE8-5581-000	N	1	FERRITE, BEADS: N1608Z102T01	
FB 24	WE8-5581-000	N	1	FERRITE, BEADS: N1608Z102T01	
FB 25	WE8-5581-000	N	1	FERRITE, BEADS: N1608Z102T01	
FB 26	WE8-5581-000	N	1	FERRITE, BEADS: N1608Z102T01	
FB 27	WE8-5581-000	N	1	FERRITE, BEADS: N1608Z102T01	
FB 28	WE8-5581-000	N	1	FERRITE, BEADS: N1608Z102T01	
FB 29	WE8-5581-000	N	1	FERRITE, BEADS: N1608Z102T01	
FB 30	VV1-8000-000	N	1	JUMPER	
FB 31	WE8-5581-000	N	1	FERRITE, BEADS: N1608Z102T01	
FB 32	WE8-5581-000	N	1	FERRITE, BEADS: N1608Z102T01	
FB 33	WE8-5581-000	N	1	FERRITE, BEADS: N1608Z102T01	
FB 34	WE8-5581-000	N	1	FERRITE, BEADS: N1608Z102T01	
FB 35	VV1-8000-000	N	1	JUMPER	

FIGURE & KEY NO.	PART NUMBER	R A N K	Q T Y	DESCRIPTION	REMARKS
FB 36	WE8-5581-000	N	1	FERRITE, BEADS: N1608Z102T01	
FB 37	WE8-5581-000	N	1	FERRITE, BEADS: N1608Z102T01	
FB 38	WE8-5581-000	N	1	FERRITE, BEADS: N1608Z102T01	
FB 70	WE8-5362-000	N	1	FERRITE, BEADS: N1608Z300-01	
FB 71	WE8-5608-000	N	1	FERRITE, BEADS: N1608Z121T01	
FB 72	WE8-5608-000	N	1	FERRITE, BEADS: N1608Z121T01	
FB 74	WE8-5441-000	N	1	FERRITE, BEADS: HF50ACC453215P	
FB101	WE8-5583-000	N	1	FERRITE, BEADS: N1608Z800T01	
FB102	WE8-5362-000	N	1	FERRITE, BEADS: N1608Z300-01	
FU 1	VD7-1621-301		1	FUSE: 49101.3	
IC 1	WA3-6426-000	N	1	IC, PST592EMT	
IC 2	WA3-7678-000	N	1	IC, TMP96C141AF, MPU	
IC 3	QH7-8888-000		1	IC, PRINTER CONTROLLER	
IC 4	QH8-0009-000		1	IC, MSM538002E, MASKED-ROM	
	WA9-0066-000	N	1	SOCKET, IC	
IC 6	WA3-8859-000	N	1	IC, S-29130AFJ-TB, EEP-ROM	
IC 7	WA7-0084-000	N	1	IC, M5M44260CJ-6, DRAM	
IC 12	WA4-7049-000	N	1	IC, MTD2007F, MOTOR DRIVER	
IC 13	WA4-7049-000	N	1	IC, MTD2007F, MOTOR DRIVER	
IC 14	WA4-5666-000	N	1	IC, BA10358F, OPE AMP	
J 1	VS1-6127-004	N	1	CONNECTOR, 4P	
J 2	WS1-5559-000	N	1	CONNECTOR, FEMALE, 36P	
J 3	VS1-5450-004	N	1	CONNECTOR, 4P	
J 4	VS1-1028-004	N	1	PIN ASS'Y, 4P	
J 5	VS1-6255-032	N	1	CONNECTOR, 32P	
LED 0	WG2-5157-000	N	1	LED: SEC2494C	
PS 1	WG8-5356-000	N	1	IC, TLP831(CANO), PHOTO INTERRUPTER	
PS 2	WG8-5301-000	N	1	IC, PHOTO INTERRUPTER: EE-SX1055	
Q 1	WA2-1267-000	N	1	TRANSISTOR: FN1A4P (PNP)	
Q 2	WA2-5058-000	N	1	TRANSISTOR: FA1A4M (NPN)	
Q 3	WA2-5058-000	N	1	TRANSISTOR: FA1A4M (NPN)	
Q 4	WA2-0998-000	N	1	TRANSISTOR: FA1L4M (NPN)	
Q 5	WA2-1267-000	N	1	TRANSISTOR: FN1A4P (PNP)	
Q 6	WA2-0998-000	N	1	TRANSISTOR: FA1L4M (NPN)	
Q 7	WA2-6409-000	N	1	FET, FX20ASJ-03 (P)	
Q 8	WA2-0998-000	N	1	TRANSISTOR: FA1L4M (NPN)	
Q 9	WA2-5481-000	N	1	TRANSISTOR: 2SB1443Q (PNP)	
Q 10	WA2-6168-000	N	1	TRANSISTOR: 2SK2103 (FET)	
Q 11	WA2-6403-000	N	1	TRANSISTOR: FP1A4M	
Q 12	WA2-5058-000	N	1	TRANSISTOR: FA1A4M (NPN)	
Q 13	WA2-0998-000	N	1	TRANSISTOR: FA1L4M (NPN)	
Q 14	WA2-0998-000	N	1	TRANSISTOR: FA1L4M (NPN)	
R 1	VV1-3165-102	N	1	RESISTOR, FIXED, METAL: 1K OHM 1/16W	
R 2	VV1-3165-103	N	1	RESISTOR, FIXED, METAL: 10K OHM 1/16W	
R 3	VR7-7984-702	N	1	RESISTOR, CHIP, METAL: 47K OHM 1/16W	

FIGURE & KEY NO.	PART NUMBER	R A N K	Q T Y	DESCRIPTION	REMARKS
R 4	VV1-8000-000	N	1	JUMPER	
R 6	VV1-3165-470	N	1	RESISTOR, FIXED, METAL: 47 OHM 1/16W	
R 7	VV1-3165-105	N	1	RESISTOR, FIXED, METAL: 1M OHM 1/16W	
R 9	VV1-3165-332	N	1	RESISTOR, CHIP, METAL: 3.3K OHM 1/16W	
R 10	VV1-3165-473	N	1	RESISTOR, FIXED, METAL: 47K OHM 1/16W	
R 19	VV1-3165-102	N	1	RESISTOR, FIXED, METAL: 1K OHM 1/16W	
R 20	VV1-3165-101	N	1	RESISTOR, FIXED, METAL: 100 OHM 1/16W	
R 25	VV1-3165-100	N	1	RESISTOR, CHIP, METAL: 10 OHM 1/16W	
R 26	VV1-3165-102	N	1	RESISTOR, FIXED, METAL: 1K OHM 1/16W	
R 27	VV1-3165-152	N	1	RESISTOR, FIXED, METAL: 1.5K OHM 1/16W	
R 28	VV1-3165-102	N	1	RESISTOR, FIXED, METAL: 1K OHM 1/16W	
R 29	VV1-3165-101	N	1	RESISTOR, FIXED, METAL: 100 OHM 1/16W	
R 30	VV1-3165-102	N	1	RESISTOR, FIXED, METAL: 1K OHM 1/16W	
R 31	VV1-3165-102	N	1	RESISTOR, FIXED, METAL: 1K OHM 1/16W	
R 32	VV1-3165-332	N	1	RESISTOR, CHIP, METAL: 3.3K OHM 1/16W	
R 33	VV1-1185-391	N	1	RESISTOR, CHIP, METAL: 390 OHM 1/8W	
R 50	VV1-3165-473	N	1	RESISTOR, FIXED, METAL: 47K OHM 1/16W	
R 51	VV1-2115-391	N	1	RESISTOR, CHIP, METAL: 390 OHM 1/10W	
R 52	VV1-3165-393	N	1	RESISTOR, FIXED, METAL: 39K OHM 1/16W	
R 53	VV1-3165-103	N	1	RESISTOR, FIXED, METAL: 10K OHM 1/16W	
R 54	VV1-2115-391	N	1	RESISTOR, CHIP, METAL: 390 OHM 1/10W	
R 55	VV1-3165-393	N	1	RESISTOR, FIXED, METAL: 39K OHM 1/16W	
R 56	VV1-3165-103	N	1	RESISTOR, FIXED, METAL: 10K OHM 1/16W	
R 60	VV1-3165-103	N	1	RESISTOR, FIXED, METAL: 10K OHM 1/16W	
R 61	VV1-3165-103	N	1	RESISTOR, FIXED, METAL: 10K OHM 1/16W	
R 62	VV1-3165-103	N	1	RESISTOR, FIXED, METAL: 10K OHM 1/16W	
R 63	VV1-3165-103	N	1	RESISTOR, FIXED, METAL: 10K OHM 1/16W	
R 64	VV1-3165-103	N	1	RESISTOR, FIXED, METAL: 10K OHM 1/16W	
R 65	VV1-3165-103	N	1	RESISTOR, FIXED, METAL: 10K OHM 1/16W	
R 66	VV1-2115-181	N	1	RESISTOR, CHIP, METAL: 180 OHM 1/10W	
R 67	VV1-2115-181	N	1	RESISTOR, CHIP, METAL: 180 OHM 1/10W	
R 68	VV1-3165-152	N	1	RESISTOR, FIXED, METAL: 1.5K OHM 1/16W	
R 70	VR7-7420-518	N	1	RESISTOR, CHIP, CARBON: 0.51 OHM 1/4W	
R 71	VR7-7420-518	N	1	RESISTOR, CHIP, CARBON: 0.51 OHM 1/4W	
R 72	VV1-3165-103	N	1	RESISTOR, FIXED, METAL: 10K OHM 1/16W	
R 73	VV1-2115-361	N	1	RESISTOR, CHIP: 360 OHM 1/10W	
R 74	VR7-7420-518	N	1	RESISTOR, CHIP, CARBON: 0.51 OHM 1/4W	
R 75	VR7-7420-518	N	1	RESISTOR, CHIP, CARBON: 0.51 OHM 1/4W	
R 76	VV1-3165-103	N	1	RESISTOR, FIXED, METAL: 10K OHM 1/16W	
R 77	VV1-2115-361	N	1	RESISTOR, CHIP: 360 OHM 1/10W	
R 90	VV1-3165-104	N	1	RESISTOR, FIXED, METAL: 100K OHM 1/16W	
R 91	VV1-3165-104	N	1	RESISTOR, FIXED, METAL: 100K OHM 1/16W	
R 92	VV1-2115-682	N	1	RESISTOR, CHIP, METAL: 6.8K OHM 1/10W	
R 93	VV1-2115-272	N	1	RESISTOR, CHIP, METAL: 2.7K OHM 1/10W	
R 94	VV1-2115-103	N	1	RESISTOR, CHIP, METAL: 10K OHM 1/10W	

FIGURE & KEY NO.	PART NUMBER	R A N K	Q T Y	DESCRIPTION	REMARKS
R 95	VV1-3165-101	N	1	RESISTOR, FIXED, METAL: 100 OHM 1/16W	
R 96	VV1-3165-103	N	1	RESISTOR, FIXED, METAL: 10K OHM 1/16W	
R 97	VV1-3165-473	N	1	RESISTOR, FIXED, METAL: 47K OHM 1/16W	
R 98	VV1-3165-101	N	1	RESISTOR, FIXED, METAL: 100 OHM 1/16W	
R 99	VV1-3165-101	N	1	RESISTOR, FIXED, METAL: 100 OHM 1/16W	
R100	VV1-3165-224	N	1	RESISTOR, FIXED, METAL: 220K OHM 1/16W	
R101	VV1-3165-224	N	1	RESISTOR, FIXED, METAL: 220K OHM 1/16W	
R102	VV1-3165-330	N	1	RESISTOR, FIXED, METAL: 33 OHM 1/16W	
R103	VR7-7985-100	N	1	RESISTOR, CHIP, METAL: 510 OHM 1/16W	
R104	VR7-7984-703	N	1	RESISTOR, CHIP, METAL: 470K OHM 1/16W	
R105	VR7-7981-003	N	1	RESISTOR, CHIP, METAL: 100K OHM 1/16W	
R106	VR7-7981-003	N	1	RESISTOR, CHIP, METAL: 100K OHM 1/16W	
R107	VR7-7983-302	N	1	RESISTOR, CHIP, METAL: 33K OHM 1/16W	
R108	VR7-7981-202	N	1	RESISTOR, CHIP, METAL: 12K OHM 1/16W	
R109	VR7-7981-000	N	1	RESISTOR, CHIP, METAL: 100 OHM 1/16W	
R110	VR7-7981-803	N	1	RESISTOR, CHIP, METAL: 180K OHM 1/16W	
R111	VR7-7987-501	N	1	RESISTOR, CHIP, METAL: 7.5K OHM 1/16W	
R112	VR7-7981-001	N	1	RESISTOR, CHIP, METAL: 1K OHM 1/16W	
R113	VV1-3165-103	N	1	RESISTOR, FIXED, METAL: 10K OHM 1/16W	
R114	VV1-3165-393	N	1	RESISTOR, FIXED, METAL: 39K OHM 1/16W	
R115	VV1-3165-391	N	1	RESISTOR, FIXED, METAL: 390 OHM 1/16W	
R116	VV1-3165-152	N	1	RESISTOR, FIXED, METAL: 1.5K OHM 1/16W	
R117	VV1-2115-103	N	1	RESISTOR, CHIP, METAL: 10K OHM 1/10W	
R118	VV1-2115-682	N	1	RESISTOR, CHIP, METAL: 6.8K OHM 1/10W	
RA 1	VR4-1084-332	N	1	RESISTOR, ARRAY, METAL: 3.3K OHM	
RA 2	VR4-1084-332	N	1	RESISTOR, ARRAY, METAL: 3.3K OHM	
RA 5	VR7-3070-101	N	1	RESISTOR, ARRAY: 100 OHM	
RA 6	VR7-3070-101	N	1	RESISTOR, ARRAY: 100 OHM	
RA 7	VR7-3070-101	N	1	RESISTOR, ARRAY: 100 OHM	
RA 8	VR7-3070-101	N	1	RESISTOR, ARRAY: 100 OHM	
RA 9	VR7-3070-100	N	1	RESISTOR, ARRAY: 10 OHM	
RA 10	VR7-3070-100	N	1	RESISTOR, ARRAY: 10 OHM	
RA 11	VR7-3070-100	N	1	RESISTOR, ARRAY: 10 OHM	
SW 0	WC2-5237-000	N	1	SWITCH: EVQPBO	
SW 1	WC2-5237-000	N	1	SWITCH: EVQPBO	
SW 2	WC2-5237-000	N	1	SWITCH: EVQPBO	
TH 1	WP2-5089-000	N	1	THERMISTOR: NTH5G2M40B473J05TE	
X 1	WK2-5850-000	N	1	OSCILLATOR: 20.00MHZ	
X 2	WK2-5851-000	N	1	OSCILLATOR: 20.11MHZ	
ZD 1	WA1-5999-000	N	1	DIODE, ZENER: RD6.8SB3	
ZD 11	WA1-5997-000	N	1	DIODE, ZENER: NNCD27G	
ZD 12	WA1-5996-000	N	1	DIODE, ZENER: NNCD6.8G	
ZD 13	WA1-5996-000	N	1	DIODE, ZENER: NNCD6.8G	
ZD 14	WA1-5996-000	N	1	DIODE, ZENER: NNCD6.8G	
ZD 15	WA1-5996-000	N	1	DIODE, ZENER: NNCD6.8G	

FIGURE & KEY NO.	PART NUMBER	R A N K	Q T Y	DESCRIPTION	REMARKS
ZD 16	WA1-5996-000	N	1	DIODE, ZENER: NNCD6.8G	
ZD 17	WA1-5996-000	N	1	DIODE, ZENER: NNCD6.8G	
ZD 18	WA1-6222-000	N	1	DIODE, ZENER: 02DZ3.0Z	
ZD 19	WA1-6219-000	N	1	DIODE, ZENER: 02DZ2.0Z	
ZD 20	WA1-6222-000	N	1	DIODE, ZENER: 02DZ3.0Z	
ZD 21	WA1-6219-000	N	1	DIODE, ZENER: 02DZ2.0Z	

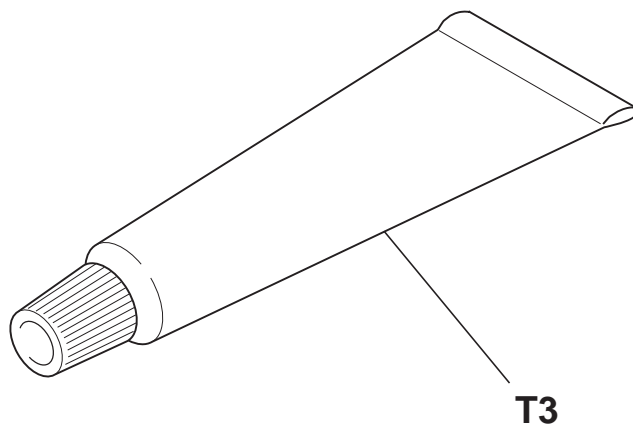
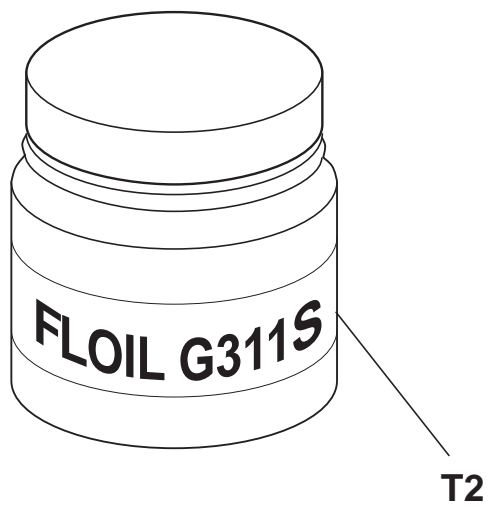
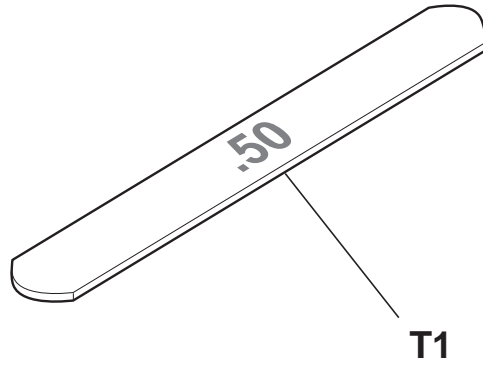
C. SCREWS & WASHERS LIST

SCREW

FIGURE & KEY NO.	PART NUMBER	R A N K	Q T Y	DESCRIPTION	REMARKS
S - 1	XB6-7300-607			SCREW, TP: M3 x 6 MM	
2	XB1-2301-207			SCREW, M3x12	
3	XB1-2300-607			SCREW, MACHINE, BINDING HEAD, M3x6	
4	XB4-7300-609			SCREW, TAP, BINDING HEAD, M3x6	
5	XB5-6300-605			SCREW, MACHINE, TP PAN HEAD, M3x6	
6	XB1-2300-407			SCREW, M3x4	
7	XA9-0693-000			SCREW, TP, M3x4	

This page intentionally left blank

FIGURE 18 TOOL



E. NUMERICAL INDEX

PART NUMBER	FIGURE & KEY NO.	DESCRIPTION
CK-0562-000	T- 3	GREASE, MOLYKOTE PG-641
QB1-0409-000	14- 3	PLATE, PRESSURE
QB1-0412-000	15- 4	SPRING, TORSION
QB1-0414-000	15- 2	HOOK, CARRIAGE
QB1-0415-000	15- 3	SPRING, TORSION
QB1-0417-000	13- 1	BUSHING
QB1-0423-000	13- 2	SPRING, COIL
QB1-0480-000	16- 3	GEAR, TRANSMISSION
QB1-0485-000	16- 2	GEAR, TRANSMISSION
QB1-0497-020	9- 6	HOLDER, CARRIAGE RIBBON CABLE
QB1-0500-000	12- 2	GEAR, SLOW DOWN
QB1-0501-020	9- 1	ROLLER, IDLER
QB1-0502-000	9- 2	BRACKET, IDLER
QB1-0622-000	13- 8	WASHER, PLAIN
QB1-0664-000	14- 2	SPRING, COIL
QB1-0684-000	14- 4	ROLLER, PRESSURE
QB1-0971-060	15- 7	FRAME, PRINTER
QB1-0972-000	9- 5	GUIDE, CORNER
QB1-0973-000	15- 5	ARM, PAPER SENSOR
QB1-0974-000	15- 1	ARM, SENSOR
QB1-0984-000	11- 3	GUIDE, RIBBON CABLE
QB1-0985-000	11- 5	PAD, CONTACT
QB1-0986-040	11- 7	LEVER, LOCKING
QB1-0987-020	11- 9	SPRING, COIL
QB1-0991-000	9- 8	BELT, CARRIAGE
QB1-0993-020	11- 6	COVER, LEVER
QB1-1045-000	7- 3	PLATE, PAPER GUIDE
QB1-1229-000	9- 4	CLIP, SHAFT
QB1-1273-000	2- 5	CLEANER, SPUR
QB1-1274-000	2- 6	ROLLER, CLEANER
QB1-1278-000	13- 5	SHAFT, ROLLER
QB1-1282-000	11- 2	SPRING, COIL
QB1-1283-000	11- 8	STOPPER
QB1-1952-000	2- 2	SPUR
QB1-1965-000	13- 6	ROLLER, TRANSMISSION
QB1-1995-000	9- 10	SHAFT, CARRIAGE
QB1-2194-000	16- 4	SPRING, HOOK END COIL
QB1-2200-020	8- 2	ABSORBER, INK
QB1-2201-020	8- 1	ABSORBER, INK
QB1-2205-000	3- 5	BUTTON, PUSH
QB1-2206-000	3- 2	GUIDE, INDICATOR
QB1-2207-000	3- 3	BAR, BUTTON
QB1-2240-000	15- 6	GUIDE, PRESSURE PLATE
QB1-2250-020	9- 7	HOLDER, BELT
QB1-2915-000	14- 1	FRAME, CARRIAGE GUIDE
QB1-2917-000	10- 3	CAM, TENSION
QB1-2918-020	10- 1	COVER, CARRIAGE TOP
QB1-2925-000	10- 2	SPRING, HOOK END COIL
QB1-3032-000	4- 1	COVER, REAR
QB1-3033-000	5- 1	COVER, LOGIC BOARD
QB1-3038-000	3- 4	SWITCH, CARTRIDGE
QB1-3040-000	2- 4	HOLDER, SPUR
QB1-3044-000	2- 3	SPUR SHAFT
QB1-3171-000	11- 10	BASE, CARRIAGE
QB1-3265-000	2- 8	PLATE, MODEL NAME
QB1-3271-000	10- 4	LEVER, FORMS THICKNESS
QB1-3274-000	9- 3	SPRING, COIL
QB1-3275-000	13- 3	PLATEN

PART NUMBER	FIGURE & KEY NO.	DESCRIPTION
QG2-2698-000	11- 4	CARRIAGE, RIBBON CABLE ASS'Y
QG2-2781-000	7- 4	DC CONNECTOR ASS'Y
QG2-2984-000	6- 1	LOGIC BOARD ASS'Y
QG5-0749-000	13- 7	FEED ROLLER UNIT
QG5-0959-020	5- 2	SHEET FEEDER UNIT
QG5-0960-000	16- 1	PICK-UP ROLLER UNIT
QG5-0963-000	3- 1	INNER COVER UNIT
QG5-0965-000	13- 4	EJECT ROLLER ASS'Y
QG5-1076-000	11- 1	CARTRIDGE HOLDER UNIT
QG5-1090-050	7- 2	PURGE UNIT
QG5-1140-000	7- 1	BOTTOM CASE UNIT
QG5-1141-000	2- 1	FRONT COVER UNIT
QG5-1143-000	1- 1	TRAY UNIT
QG5-1144-000	9- 9	CARRIAGE UNIT
QH3-3251-000	1- 2	AC ADAPTER: 120V 50/60HZ
QH3-3252-000	1- 3	AC ADAPTER: 220-240V 50HZ
QH4-4222-000	12- 3	MOTOR, PAPER FEED
QH4-4224-000	12- 1	MOTOR, CARRIAGE
QH7-8888-000	17- IC 3	IC, PRINTER CONTROLLER
QH8-0009-000	17- IC 4	IC, MSM538002E, MASKED-ROM
QS5-8265-000	2- 7	PLATE, LOGO
QY9-0016-000	T- 1	GAUGE, GAP: 1.2 MM
TKC-0953-000	T- 2	GREASE, FLOIL: G311S
VC7-0780-107	17- C202	CAPACITOR, AL-EL: 100UF 35V
	17- C205	
	17- C301	
VC7-0780-108	17- C302	CAPACITOR, AL-EL: 1000UF 35V
	17- C303	
VD7-1621-301	17- FU 1	FUSE: 49101.3
VR4-1084-332	17- RA 1	RESISTOR,ARRAY,METAL: 3.3K OHM 1/8W
	17- RA 2	
VR7-3070-100	17- RA 9	RESISTOR, ARRAY: 10 OHM
	17- RA 10	
	17- RA 11	
VR7-3070-101	17- RA 5	RESISTOR, ARRAY: 100 OHM
	17- RA 6	
	17- RA 7	
	17- RA 8	
VR7-7420-518	17- R 70	RESISTOR,CHIP,CARBON: 0.51 OHM 1/4W
	17- R 71	
	17- R 74	
	17- R 75	
VR7-7981-000	17- R109	RESISTOR,CHIP,METAL: 100 OHM 1/16W
VR7-7981-001	17- R112	RESISTOR,CHIP,METAL: 1K OHM 1/16W
VR7-7981-003	17- R105	RESISTOR,CHIP,METAL: 100K OHM 1/16W
	17- R106	
VR7-7981-202	17- R108	RESISTOR,CHIP,METAL: 12K OHM 1/16W
VR7-7981-803	17- R110	RESISTOR,CHIP,METAL: 180K OHM 1/16W
VR7-7983-302	17- R107	RESISTOR,CHIP,METAL: 33K OHM 1/16W
VR7-7984-702	17- R 3	RESISTOR,CHIP,METAL: 47K OHM 1/16W
VR7-7984-703	17- R104	RESISTOR,CHIP,METAL: 470K OHM 1/16W
VR7-7985-100	17- R103	RESISTOR,CHIP,METAL: 510 OHM 1/16W
VR7-7987-501	17- R111	RESISTOR,CHIP,METAL: 7.5K OHM 1/16W
VS1-1028-004	17- J 4	PIN ASS'Y, 4P
VS1-5450-004	17- J 3	CONNECTOR, 4P
VS1-6127-004	17- J 1	CONNECTOR, 4P
VS1-6255-032	17- J 5	CONNECTOR, 32P
VV1-1185-391	17- R 33	RESISTOR,CHIP,METAL: 390 OHM 1/8W

PART NUMBER	FIGURE & KEY NO.	DESCRIPTION	PART NUMBER	FIGURE & KEY NO.	DESCRIPTION
VV1-2115-103	17- R 94	RESISTOR, CHIP,METAL: 10K OHM 1/10W	VW4-1027-104	17- C 7	CAPACITOR, CERAMIC: 0.1UF 25V
	17- R117			17- C 9	
VV1-2115-181	17- R 66	RESISTOR, CHIP,METAL: 180 OHM 1/10W		17- C 11	
	17- R 67			17- C 60	
VV1-2115-272	17- R 93	RESISTOR,CHIP,METAL: 2.7K OHM 1/10W		17- C 62	
VV1-2115-361	17- R 73	RESISTOR,CHIP: 360 OHM 1/10W		17- C103	
	17- R 77			17- C105	
VV1-2115-391	17- R 51	RESISTOR,CHIP,METAL: 390 OHM 1/10W		17- C107	
	17- R 54			17- C109	
VV1-2115-682	17- R 92	RESISTOR,CHIP,METAL: 6.8K OHM 1/10W		17- C110	
	17- R118			17- C111	
VV1-3165-100	17- R 25	RESISTOR,CHIP,METAL: 10 OHM 1/16W		17- C112	
VV1-3165-101	17- R 20	RESISTOR,FIXED,METAL: 100 OHM 1/16W		17- C113	
	17- R 29			17- C114	
	17- R 95			17- C115	
	17- R 98			17- C121	
	17- R 99			17- C133	
VV1-3165-102	17- R 1	RESISTOR,FIXED,METAL: 1K OHM 1/16W		17- C304	
	17- R 19		VW4-1037-103	17- C 8	CAPACITOR,ML,CERAMIC:0.01UF 50V
	17- R 26			17- C 22	
	17- R 28			17- C 50	
	17- R 30			17- C 51	
	17- R 31			17- C 70	
VV1-3165-103	17- R 2	RESISTOR,FIXED,METAL: 10K OHM 1/16W	VW4-1234-101	17- C 2	CAPACITOR,CHIP,CERAMIC: 100 PF 50V
	17- R 53			17- C 3	
	17- R 56			17- C 4	
	17- R 60			17- C 5	
	17- R 61			17- C 6	
	17- R 62			17- C 52	
	17- R 63			17- C 53	
	17- R 64			17- C 71	
	17- R 65			17- C 72	
	17- R 72		VW4-1234-330	17- C 12	CAPACITOR, CHIP, CARAMIC: 33PF 50V
	17- R 76			17- C 20	
	17- R 96			17- C 23	
	17- R113			17- C 24	
VV1-3165-104	17- R 90	RESISTOR,FIXED,METAL:100K OHM 1/16W		17- C 25	
	17- R 91			17- C 26	
VV1-3165-105	17- R 7	RESISTOR,FIXED,METAL:1M OHM 1/16W		17- C 27	
VV1-3165-152	17- R 27	RESISTOR,FIXED,METAL:1.5K OHM 1/16W		17- C 28	
	17- R 68			17- C 29	
	17- R116			17- C 30	
VV1-3165-224	17- R100	RESISTOR,FIXED,METAL:220K OHM 1/16W	VW4-1234-471	17- C 21	CAPACITOR, CHIP: 470PF 50V
	17- R101		VW4-1835-102	17- C 1	CAPACITOR, CERAMIC: 1000PF 50V
VV1-3165-330	17- R102	RESISTOR,FIXED,METAL: 33 OHM 1/16W		17- C 10	
VV1-3165-332	17- R 9	RESISTOR,CHIP,METAL: 3.3K OHM 1/16W		17- C104	
	17- R 32			17- C106	
VV1-3165-391	17- R115	RESISTOR,FIXED,METAL: 390 OHM 1/16W		17- C108	
VV1-3165-393	17- R 52	RESISTOR,FIXED,METAL: 39K OHM 1/16W		17- C116	
	17- R 55			17- C117	
	17- R114			17- C118	
VV1-3165-470	17- R 6	RESISTOR,FIXED,METAL: 47 OHM 1/16W		17- C201	
VV1-3165-473	17- R 10	RESISTOR,FIXED,METAL:47K OHM 1/16W	VW4-1835-472	17- C 61	CAPACITOR,CERAMIC: 4700PF 50V
	17- R 50			17- C 63	
	17- R 97		VW4-2037-104	17- C203	CAPACITOR, CHIP, CERAMIC: 0.1UF 50V
VV1-8000-000	17- FB 30	JUMPER		17- C206	
	17- FB 35			17- C305	
	17- R 4			17- C306	

PART NUMBER	FIGURE & KEY NO.	DESCRIPTION
WA1-5996-000	17- ZD 12	DIODE, ZENER: NNCD6.8G
	17- ZD 13	
	17- ZD 14	
	17- ZD 15	
	17- ZD 16	
	17- ZD 17	
WA1-5997-000	17- ZD 11	DIODE, ZENER: NNCD27G
WA1-5999-000	17- ZD 1	DIODE, ZENER: RD6.8SB3
WA1-6219-000	17- ZD 19	DIODE, ZENER: 02DZ2.0Z
	17- ZD 21	
WA1-6222-000	17- ZD 18	DIODE, ZENER: 02DZ3.0Z
	17- ZD 20	
WA2-0998-000	17- Q 4	TRANSISTOR: FA1L4M (NPN)
	17- Q 6	
	17- Q 8	
	17- Q 13	
WA2-1267-000	17- Q 14	TRANSISTOR: FN1A4P (PNP)
	17- Q 1	
WA2-5058-000	17- Q 5	TRANSISTOR: FA1A4M (NPN)
	17- Q 2	
	17- Q 3	
	17- Q 12	
	17- Q 9	
WA2-5481-000	17- Q 10	TRANSISTOR: 2SB1443Q (PNP)
WA2-6168-000	17- Q 11	TRANSISTOR: 2SK2103 (FET)
WA2-6403-000	17- Q 11	TRANSISTOR: FP1A4M
WA2-6409-000	17- Q 7	FET, FX20ASJ-03 (P)
WA3-6426-000	17- IC 1	IC, PST592EMT
WA3-7678-000	17- IC 2	IC, TMP96C141AF, MPU
WA3-8859-000	17- IC 6	IC, S-29130AFJ-TB, EEP-ROM
WA4-5666-000	17- IC 14	IC, BA10358F, OPE AMP
WA4-7049-000	17- IC 12	IC, MTD2007F, MOTOR DRIVER
	17- IC 13	
WA7-0084-000	17- IC 7	IC, M5M44260CJ-6, DRAM
WA9-0066-000	17- IC 4	SOCKET, IC
WC2-5237-000	17- SW 0	SWITCH: EVQPBO
	17- SW 1	
	17- SW 2	
WE8-5362-000	17- FB 10	FERRITE, BEADS: N1608Z300-01
	17- FB 70	
	17- FB102	
WE8-5441-000	17- FB 74	FERRITE, BEADS: HF50ACC453215P
WE8-5581-000	17- FB 20	FERRITE, BEADS: N1608Z102T01
	17- FB 21	
	17- FB 22	
	17- FB 23	
	17- FB 24	
	17- FB 25	
	17- FB 26	
	17- FB 27	
	17- FB 28	
	17- FB 29	
	17- FB 31	
	17- FB 32	
	17- FB 33	
	17- FB 34	
	17- FB 36	
	17- FB 37	
	17- FB 38	

PART NUMBER	FIGURE & KEY NO.	DESCRIPTION
WE8-5582-000	17- FB 5	FERRITE, BEADS: N1608Z301T01
	17- FB 6	
	17- FB 7	
	17- FB 8	
	17- FB 9	
WE8-5583-000	17- FB 1	FERRITE, BEADS: N1608Z800T01
	17- FB 2	
	17- FB 3	
	17- FB 4	
	17- FB101	
	17- FB 71	
	17- FB 72	
WG2-5157-000	17- LED 0	LED: SEC2494C
WG8-5301-000	17- PS 2	IC, PHOTO INTERRUPTER: EE-SX1055
WG8-5356-000	17- PS 1	IC, TLP831(CANO), PHOTO INTERRUPTER
WK2-5850-000	17- X 1	OSCILLATOR: 20.00MHZ
WK2-5851-000	17- X 2	OSCILLATOR: 20.11MHZ
WP2-5089-000	17- TH 1	THERMISTOR: NTH5G2M40B473J05TE
WR1-5057-000	17- BZ 1	BEEPER: PKM13EPY-4000-TF01
WS1-5559-000	17- J 2	CONNECTOR, FEMALE, 36P
WT3-5061-000	1- 4	CORD, POWER
WT3-5069-000	1- 5	CORD, POWER
XA9-0693-000	S- 7	SCREW, TP, M3x4
XB1-2300-407	S- 6	SCREW, M3x4
XB1-2300-607	S- 3	SCREW, MACHINE, BINDING HEAD, M3x6
XB1-2301-207	S- 2	SCREW, M3x12
XB4-7300-609	S- 4	SCREW, TAP, BINDING HEAD, M3x6
XB5-6300-605	S- 5	SCREW, MACHINE, TP PAN HEAD, M3x6
XB6-7300-607	S- 1	SCREW, TP: M3 x 6 MM



The printing paper contains
70% waste paper.

Canon