

ADJUSTMENT

Trademarks:

Canon Inc.'s trademark, logos, product names, service marks and those trademark, logos, product names, service marks licensed to Canon Inc. by any of its affiliate or subsidiary are registered or unregistered marks of Canon Inc. or such affiliate or subsidiary in Japan and/or other countries.

Adobe, the Adobe logo, Acrobat, the Acrobat logo and Reader are either registered trademarks or trademarks of Adobe Systems Incorporated in the United States of America and/or other countries. All other trademarks, product names, service marks are generally either registered or unregistered marks of their respective owners.

Copyright:

All copyrights in the content of this Service Manual are owned or controlled by Canon Inc. You are not permitted to copy, reproduce, download, modify, adapt or translate in any way the content of this Service Manual for any purpose other than the purpose contemplated herein without prior written consent of Canon Inc.

CONTENTS

1. Head Voltage Adjustment-----	1
1.1 Required Equipment -----	1
1.2 Preparation Before Adjustment -----	1
1.3 Adjustment Procedure -----	1
2. Checking and Changing the Total Number of Printed Sheets-----	5
2.1 SELPHY CP750 -----	5
2.1.1 Required Equipment-----	5
2.1.2 Procedure for Checking and Changing -----	5
2.2 SELPHY CP740 -----	7
2.2.1 Required Equipment-----	7
2.2.2 Procedure for Checking and Changing -----	7
2.3 SELPHY CP520 -----	9
2.3.1 Required Equipment-----	9
2.3.2 Procedure for Checking and Changing -----	9

1. Head Voltage Adjustment

Perform this adjustment when the MAIN PCB ASS'Y or the PRINT UNIT is replaced.

1.1 Required Equipment

- ① SELPHY CP750/CP740/CP520 that is confirmed to operate normally. (Prepare a SELPHY CP750/CP740/CP520 in addition to the SELPHY CP750/CP740/CP520 that is brought in for repair.)
- ② SD Card in which the standard image (gry_0100.JPG in case of the file stored in Service Manual) is copied, which is supplied with this Service Manual.
Copy it to the folder "***CANON" in the SD Card. (Select the DCF format.)



- ③ Digital camera which has Direct Print function.
- ④ Interface cable supplied with the digital camera.
- ⑤ Digital voltmeter

1.2 Preparation Before Adjustment

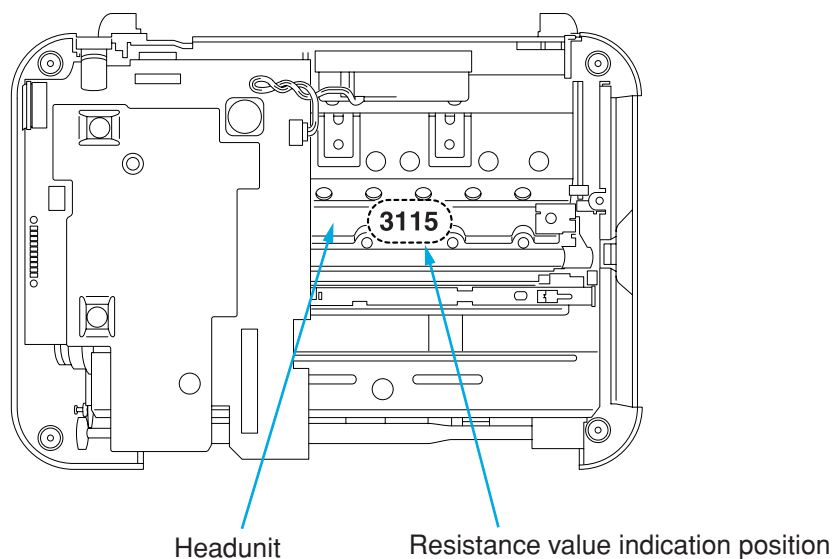
Print the standard image (②) using the SELPHY CP750/CP740/CP520 (①) that is confirmed to operate normally, via the digital camera (③).

Note: Use only the copy that was printed first.

If it fails to print, wait for five minutes and print the standard image again.

1.3 Adjustment Procedure

- (1) Read the resistance value (Ω) at the specified position in the illustration below.

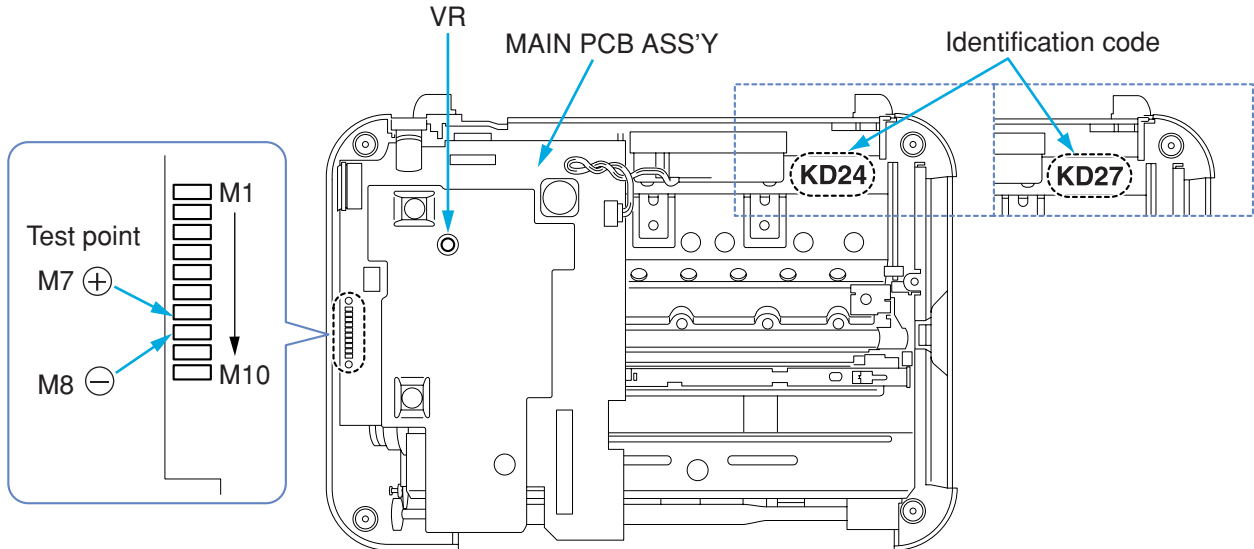


- (2) Calculate the Voltage value as below.

Common value for SELPHY CP750/CP740/CP520

Note: The calculation formula differs depending on the identification number indicated on the head unit.

There are two identification codes, KD24 and KD27.



■ Identification code: KD24

Voltage value = $\sqrt{\text{Resistance value} \times 0.088}$

For example, when the resistance value is 3152 Ω

Voltage value = $\sqrt{3152 \Omega \times 0.088} \div 16.655 \text{ V}$

■ Identification code: KD27

Voltage value = $\sqrt{\text{Resistance value} \times 0.0845}$

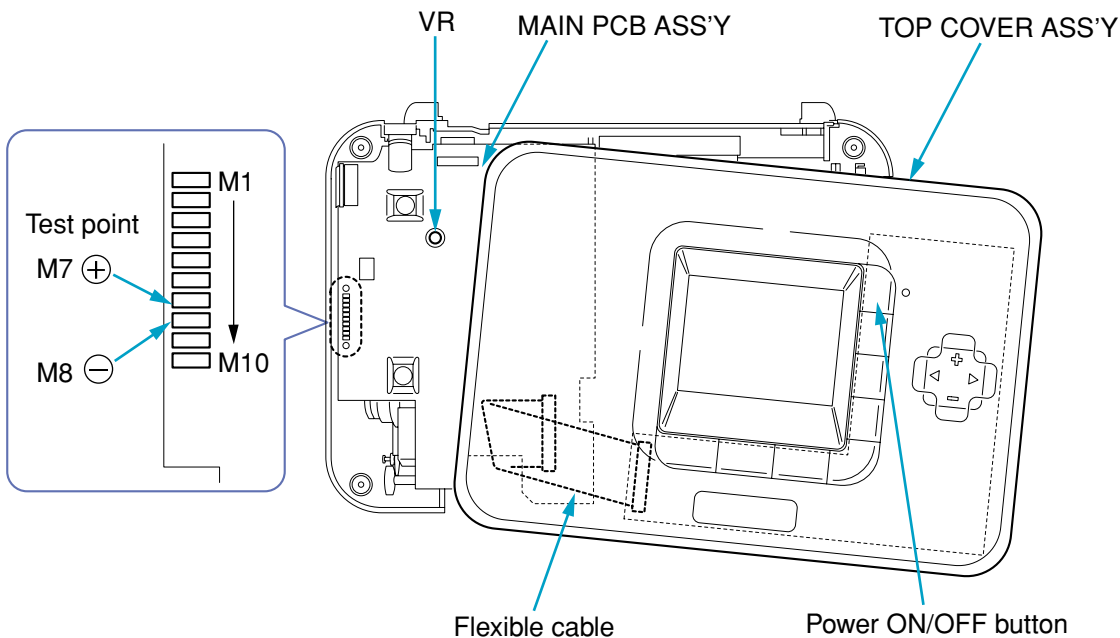
For example, when the resistance value is 3152 Ω

Voltage value = $\sqrt{3152 \Omega \times 0.0845} \div 16.320 \text{ V}$

- (3) Turn on the power to the main unit.

* When using SELPHY CP750/CP740

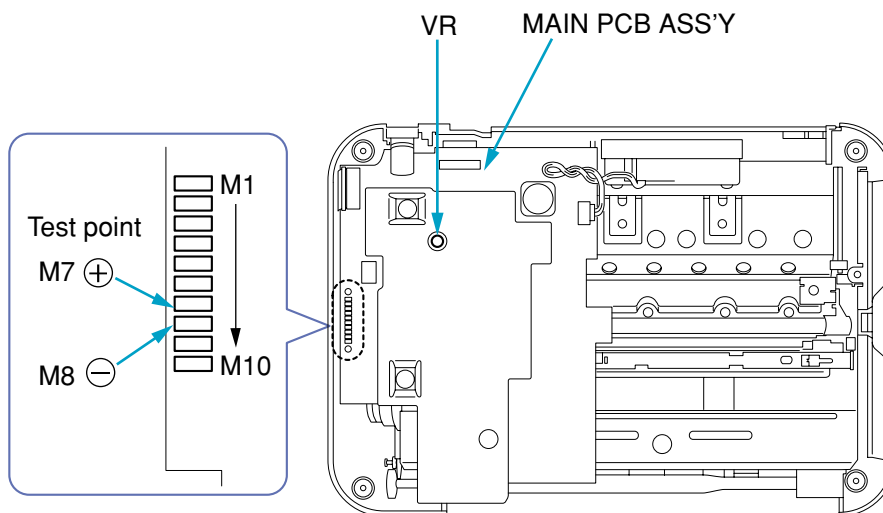
After connecting TOP COVER ASS'Y and the main unit only with the flexible cable, press the power ON/OFF button to turn on the power to the main unit.



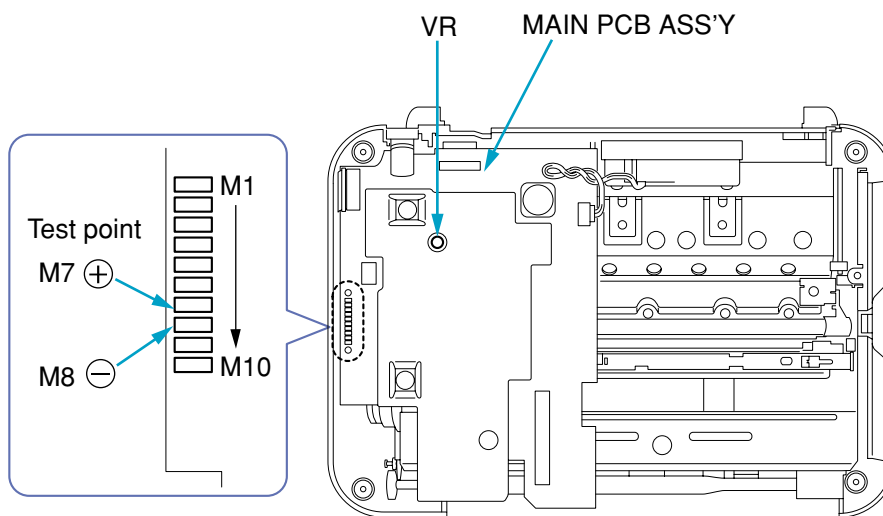
* When using SELPHY CP520

After removing TOP COVER ASS'Y from the main unit, connect the AC power to the main unit to turn on the power.

(For SELPHY CP520, the power turns on only by connecting the AC power to the main unit.)



- (4) Attach the screws and the connector removed in step (1), and then remove the TOP COVER SECTION. Connect the SELPHY CP750/CP740/CP520 and the digital camera with the interface cable to make direct printing possible.
- (5) While Printing an arbitrary image from the digital camera, measure the voltage of the test points (+, -) during printing, and adjust the volume (VR) so that the voltage value is within ± 0.03 V of the voltage value calculated in step (2).

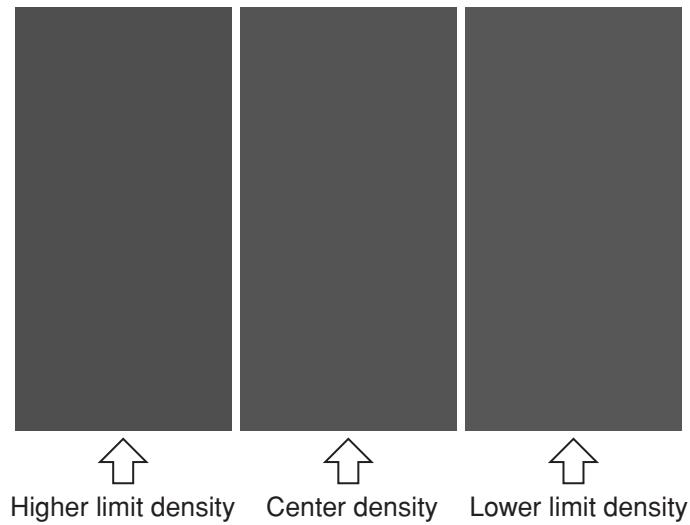


- (6) After the voltage is adjusted, wait for five minutes.
- (7) Print the standard image (2).

Note: Use only the copy that was printed first.

If it fails to print, wait for five minutes and print the standard image again.

- (8) Confirm that the center density of the printed image is between the lower limit density and the higher limit density as shown. If the center density is between them, this is the end of the adjustment. If it is not, go to step (9) and the following steps.



- (9) While printing an arbitrary image, measure the voltage of the test point while printing is in progress. When the printed image is denser than the higher limit density, adjust the control volume so that the test point voltage is decreased by 0.3V lower than the specified voltage. When the printed image is less dense than the lower limit density, adjust the control volume so that the test point voltage is increased by 0.3V higher than the specified voltage.
- (10) Repeat steps (6) to (8). If the printed image still does not satisfy the specification, increase or decrease the voltage by assumption and repeat steps (6) to (8) again.

2. Checking and Changing the Total Number of Printed Sheets

For SELPHY CP750/CP740/CP520, the total number of printed sheets can be checked and changed by using the software for checking and changing the total number of printed sheets. Perform this operation if the total number of printed sheets needs to be changed when repairs are made.

2.1 SELPHY CP750

2.1.1 Required Equipment

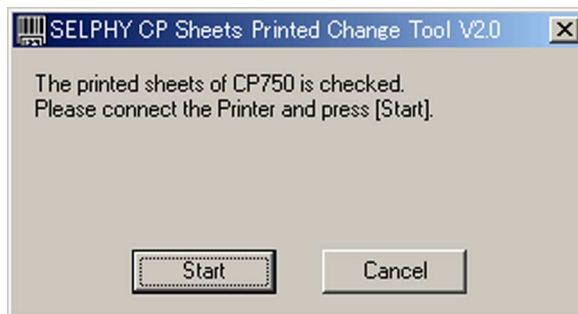
- ① Computer on which the printer driver for SELPHY CP750 is installed
(Supported OSes: Windows 2000 and Windows XP)
- ② USB cable (Commercially available)
- ③ Software for checking and changing the total number of printed sheets for SELPHY CP750 “CP750 Sheets Printed Change Software” (Download from SSIS)

2.1.2 Procedure for Checking and Changing

- (1) Connect the SELPHY CP750 and the computer with the USB cable, and turn on the power to the SELPHY CP750.

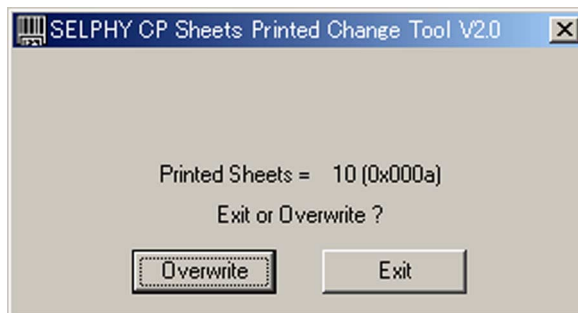
Double-click on CP750FVC.exe to start the software.

When the dialog box below appears, click the [Start] button.

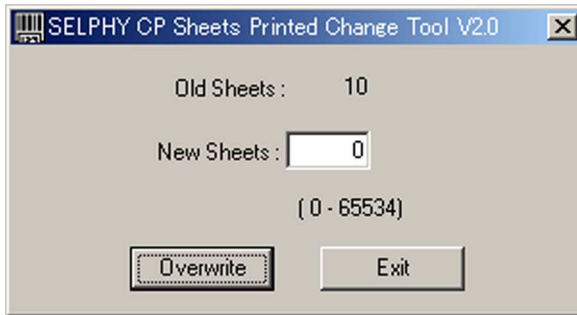


- (2) The total number of printed sheets is displayed in the dialog box below.
Check the total number of printed sheets. To leave the number unchanged, click the [Exit] button to exit the software.

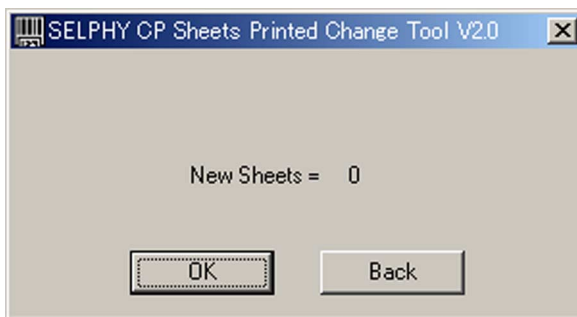
To change the number, click the [Overwrite] button.



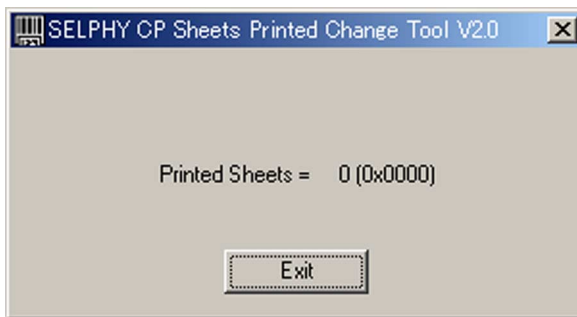
- (3) Enter the total number of printed sheets to change to in the box on the right side of “New Sheets” in the dialog box below, and click the [Overwrite] button.



- (4) Check the entered total number of printed sheets displayed in the dialog box below, and click the [OK] button.



- (5) The total number of printed sheets after the change is displayed in the dialog box below. Click the [Exit] button to exit the software. (The power to the printer turns off at the same time.)



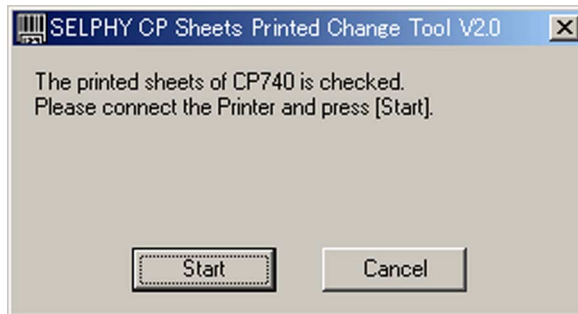
2.2 SELPHY CP740

2.2.1 Required Equipment

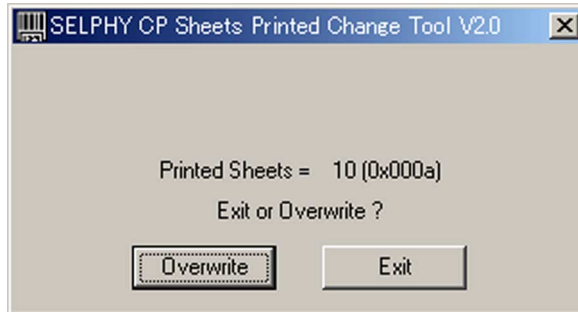
- ① Computer on which the printer driver for SELPHY CP740 is installed
(Supported OSes: Windows 2000 and Windows XP)
- ② USB cable (Commercially available)
- ③ Software for checking and changing the total number of printed sheets for SELPHY CP740 “CP740 Sheets Printed Change Software” (Download from SSIS)

2.2.2 Procedure for Checking and Changing

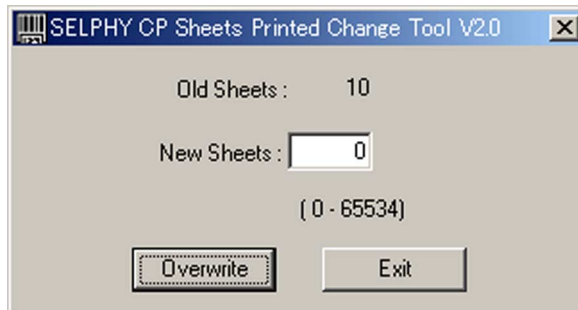
- (1) Connect the SELPHY CP740 and the computer with the USB cable, and turn on the power to the SELPHY CP740.
Double-click on CP740FVC.exe to start the software.
When the dialog box below appears, click the [Start] button.



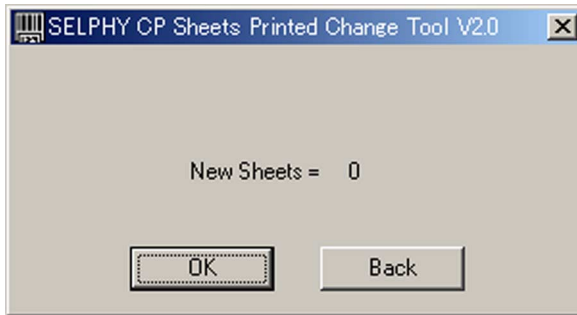
- (2) The total number of printed sheets is displayed in the dialog box below.
Check the total number of printed sheets. To leave the number unchanged, click the [Exit] button to exit the software.
To change the number, click the [Overwrite] button.



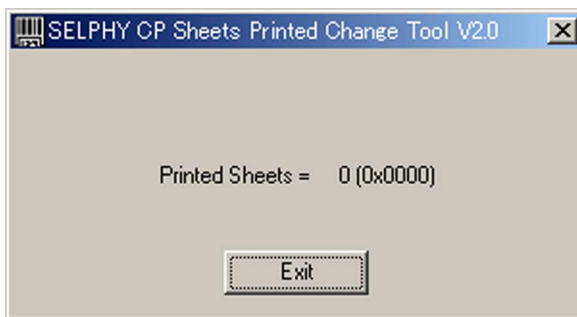
- (3) Enter the total number of printed sheets to change to in the box on the right side of “New Sheets” in the dialog box below, and click the [Overwrite] button.



- (4) Check the entered total number of printed sheets displayed in the dialog box below, and click the [OK] button.



- (5) The total number of printed sheets after the change is displayed in the dialog box below. Click the [Exit] button to exit the software. (The power to the printer turns off at the same time.)



2.3 SELPHY CP520

2.3.1 Required Equipment

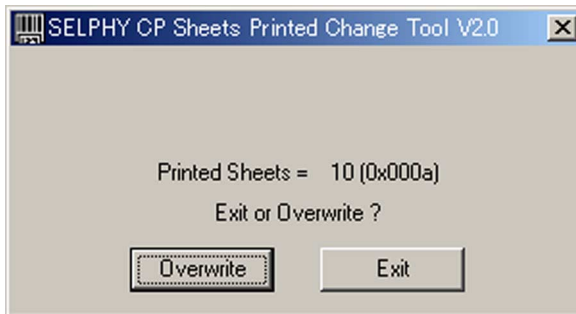
- ① Computer on which the printer driver for SELPHY CP520 is installed
(Supported OSes: Windows 2000 and Windows XP)
- ② USB cable (Commercially available)
- ③ Software for checking and changing the total number of printed sheets for SELPHY CP520 “CP520 Sheets Printed Change Software” (Download from SSIS)

2.3.2 Procedure for Checking and Changing

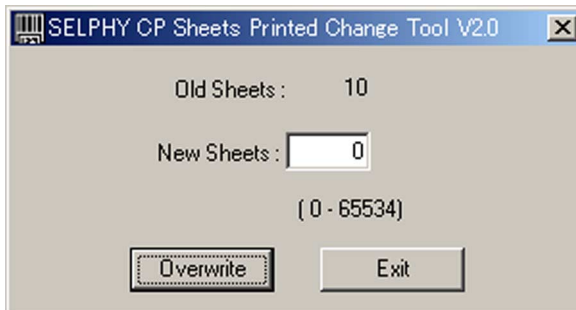
- (1) Connect the SELPHY CP520 and the computer with the USB cable, and turn on the power to the SELPHY CP520.
Double-click on CP520FVC.exe to start the software.
When the dialog box below appears, click the [Start] button.



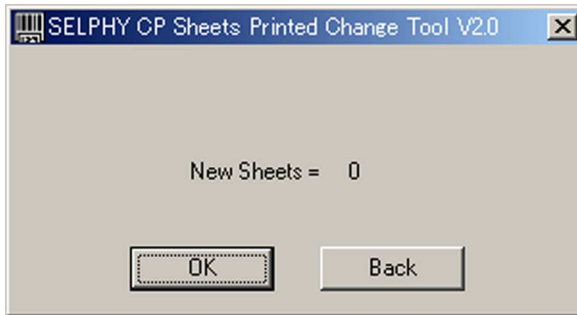
- (2) The total number of printed sheets is displayed in the dialog box below.
Check the total number of printed sheets. To leave the number unchanged, click the [Exit] button to exit the software.
To change the number, click the [Overwrite] button.



- (3) Enter the total number of printed sheets to change to in the box on the right side of “New Sheets” in the dialog box below, and click the [Overwrite] button.



- (4) Check the entered total number of printed sheets displayed in the dialog box below, and click the [OK] button.



- (5) The total number of printed sheets after the change is displayed in the dialog box below. Click the [Exit] button to exit the software.

