

Circuit Diagram

MF7200/7100 Series
MF7170i



Canon

IMPORTANT

This documentation is published by Canon Inc., Japan, to serve as a source of reference for work in the field.

Specifications and other information contained herein may vary slightly from actual machine values or those found in advertising and other printed matter.

Any questions regarding the information contained herein should be directed to the Copier Service Department of the Sales Company.

This documentation is intended for all sales areas, and may contain information not applicable to certain areas.

Reproduction without permission not allowed.

Use of this manual should be strictly supervised to avoid disclosure of confidential information.

COPYRIGHT 2001 CANON INC.

Printed in Japan

Caution

Use of this manual should be strictly supervised to avoid disclosure of confidential information.

Contents

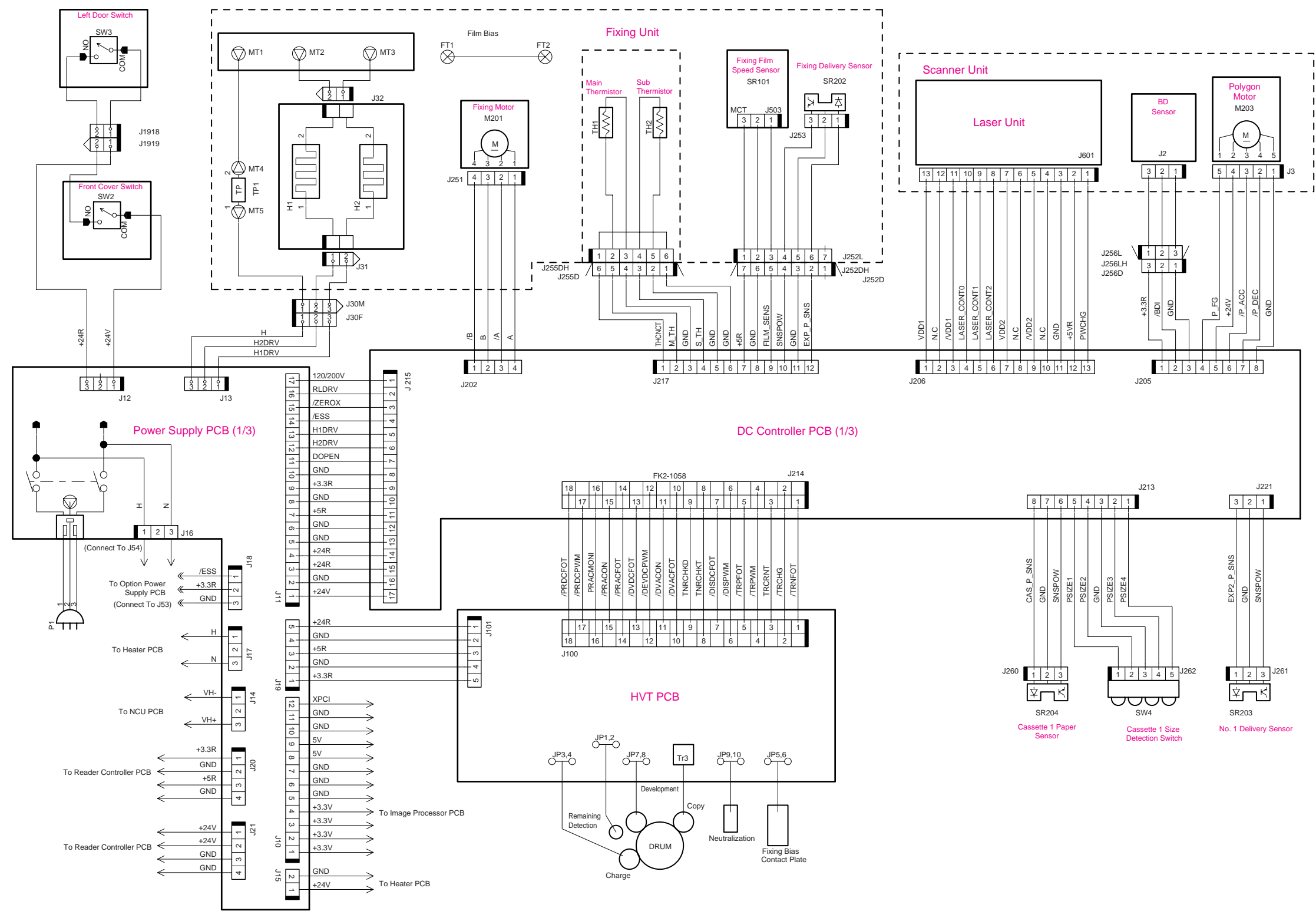
1 General Circuit Diagram..... 1
 General Circuit Diagram..... 1
2 General Timing Chart..... 9
 At Time of Printing..... 9
 Reader Unit 10

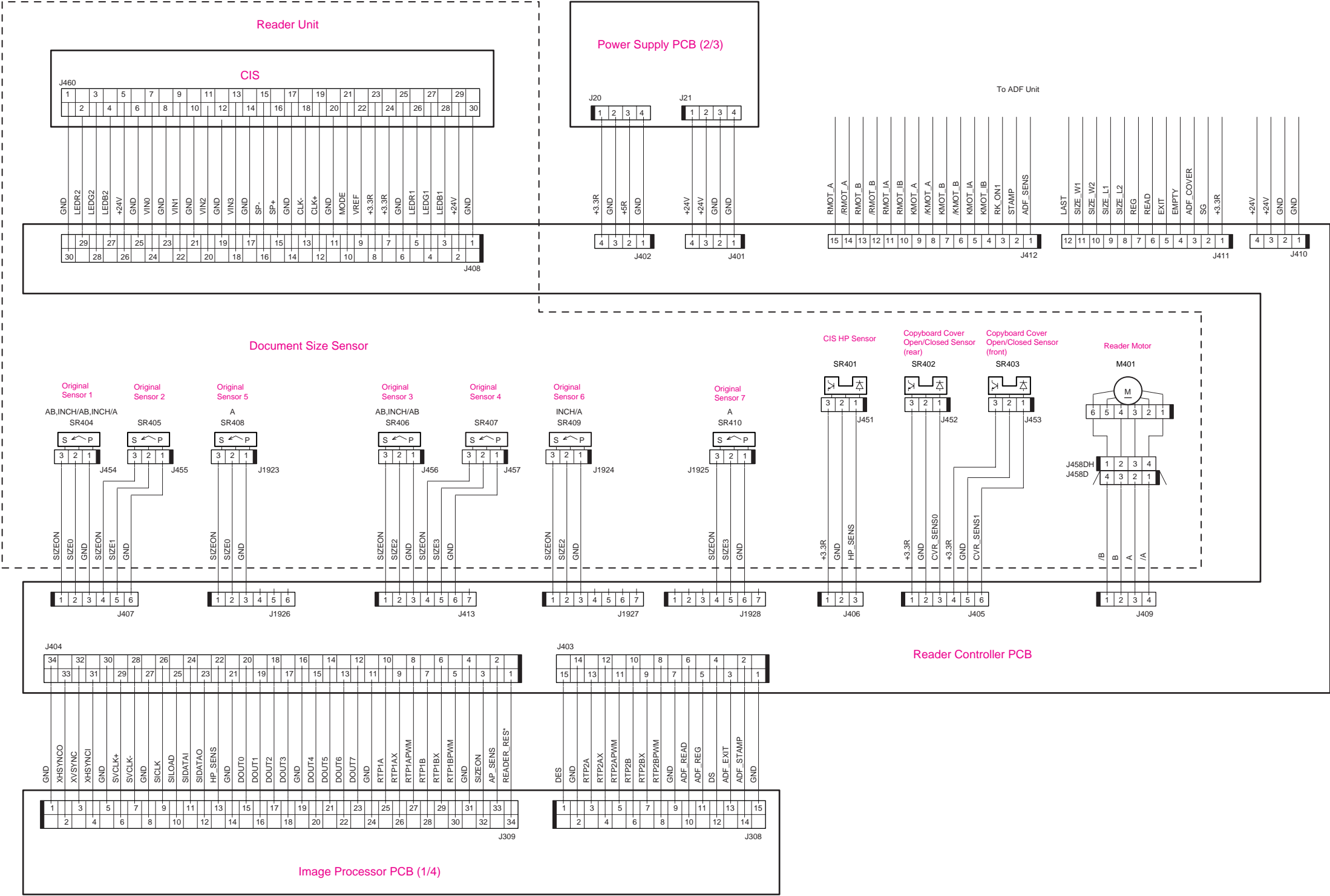
T-1-1

Parts Name		Product Name					
		Product for Japan				Product for USA	Product for Europe
	MF7240	MF7210	MF7140	MF7110	MF7280	MF7170i	MF7120
Operation Panel (LCD type)	Not used	Not used	Not used	Not used	Not used	Not used	Standard
Operation Panel (touch panel type)	Standard	Standard	Standard	Standard	Standard	Standard	Not used
Modem PCB	Standard	Option	Standard	Option	Standard	Option	Not used
NCU PCB	Standard	Option	Standard	Option	Standard	Option	Not used
Modular PCB	Standard	Option	Standard	Option	Standard	Option	Not used
First Delivery Paper Full Sensor	Standard	Standard	Standard	Standard	Option	Option	Option
Speaker	Standard	Option	Standard	Option	Standard	Option	Not used
Heater PCB	Option	Option	Service Parts	Option	Not used	Service Parts	Service Parts
Cassette Heater	Option	Option	Service Parts	Option	Not used	Service Parts	Service Parts
Reader Heater	Option	Option	Service Parts	Option	Not used	Service Parts	Service Parts
Serial PCB	Option	Option	Option	Option	Standard	Option	Not used
Networkb Board	Option	Option	Option	Option	Standard	Option	Not used
Card Reader	Option	Option	Option	Option	Not used	Option	Not used
Finisher	Option	Option	Option	Option	Not used	Option	Option
Inner 2-Way Tray	Option	Option	Option	Option	Not used	Option	Option
Duplex Unit	Option	Option	Option	Option	Standard	Option	Option

MEMO:
Only a difference part in product composition is mentioned. Other parts are equipped with all each countrty/region.

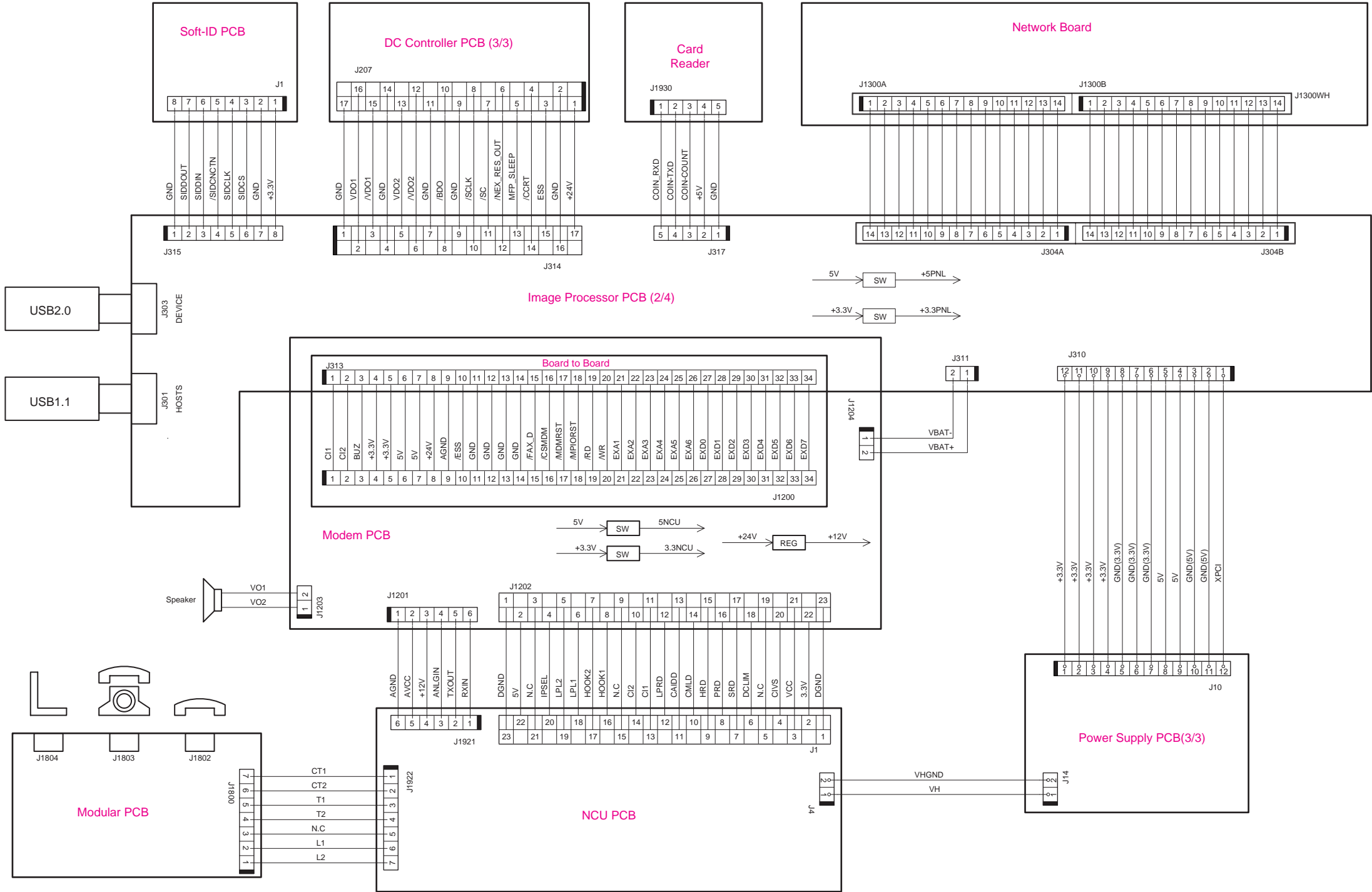
General Circuit Diagram 1



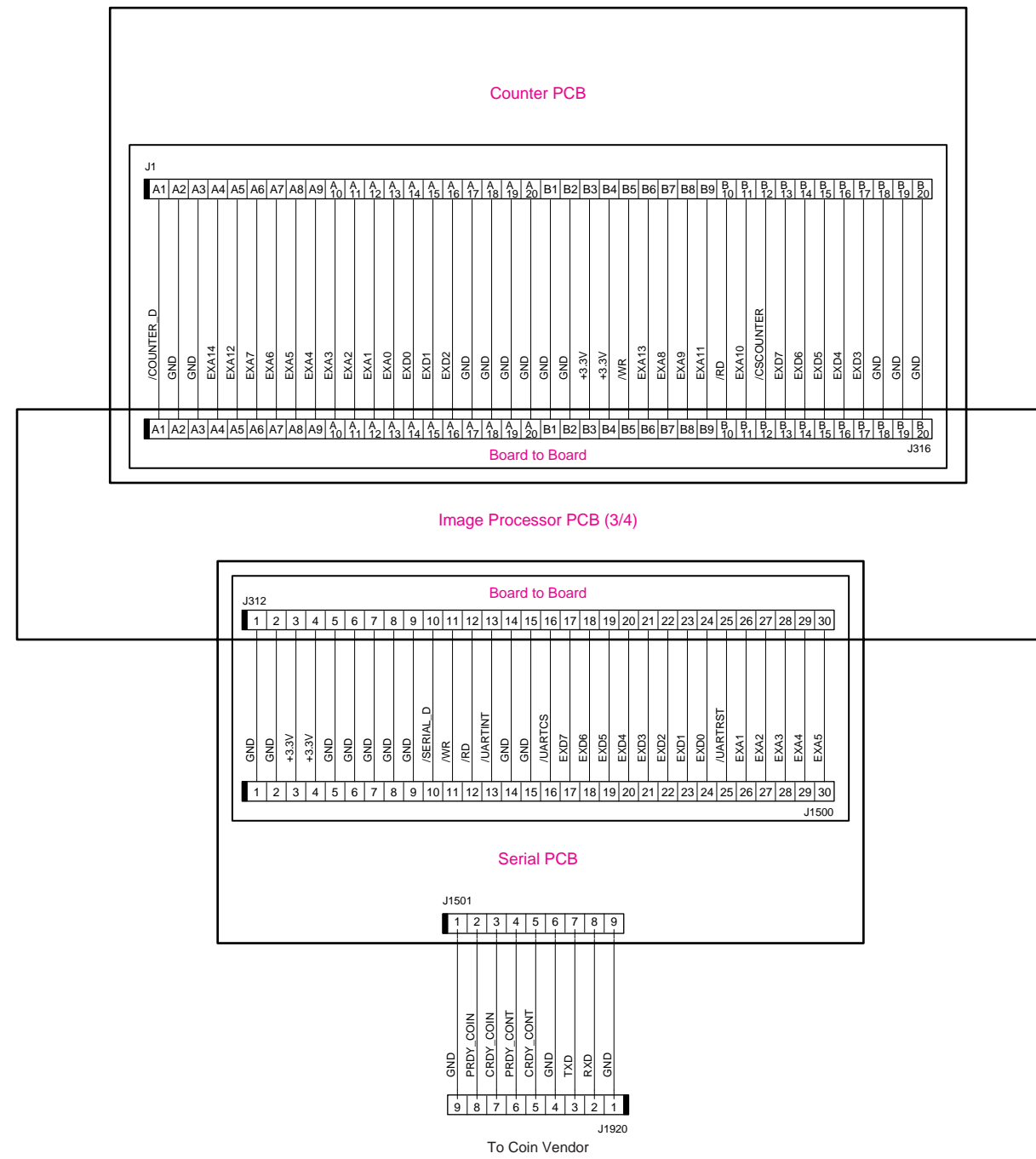


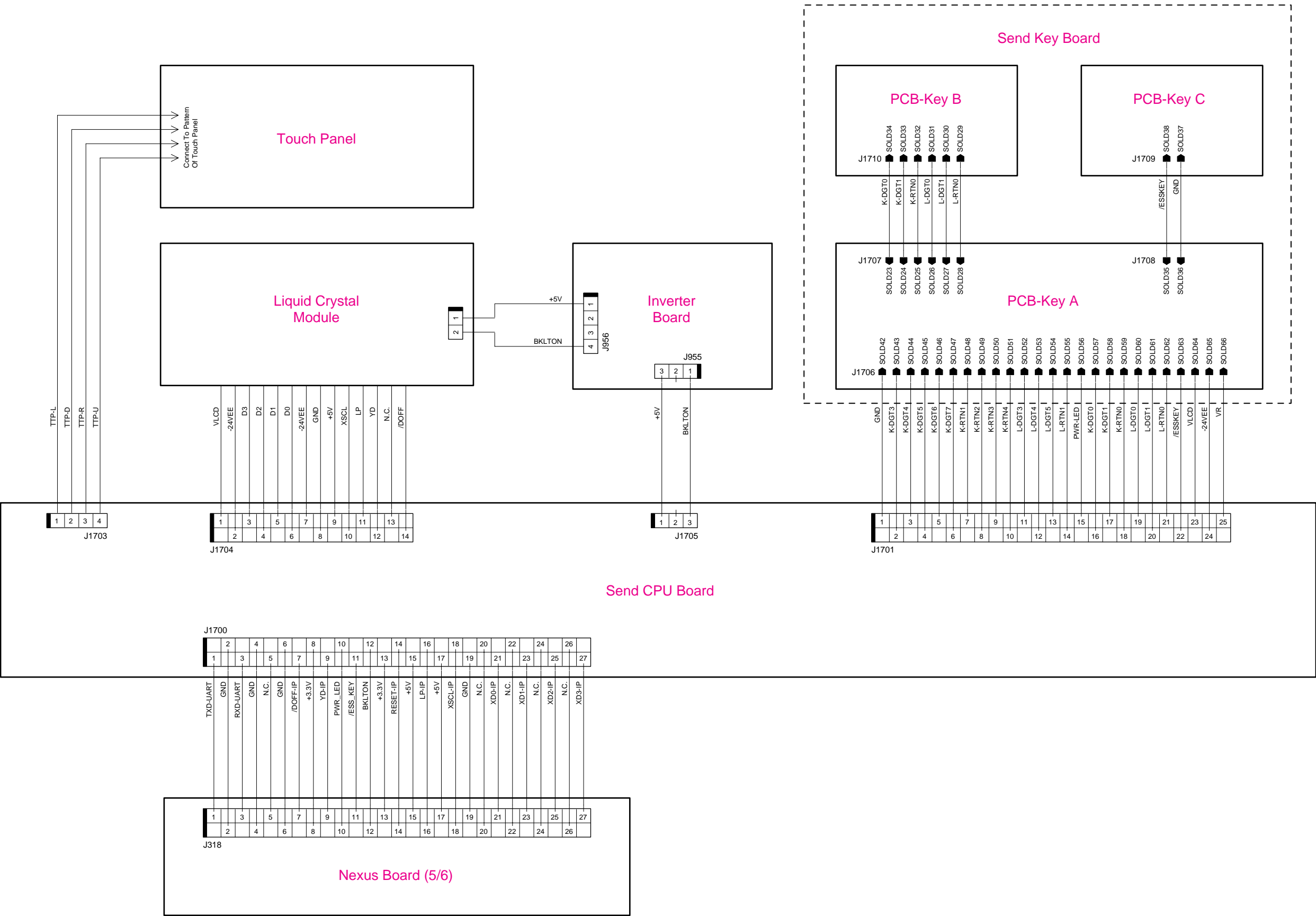
F-1-2

General Circuit Diagram 4



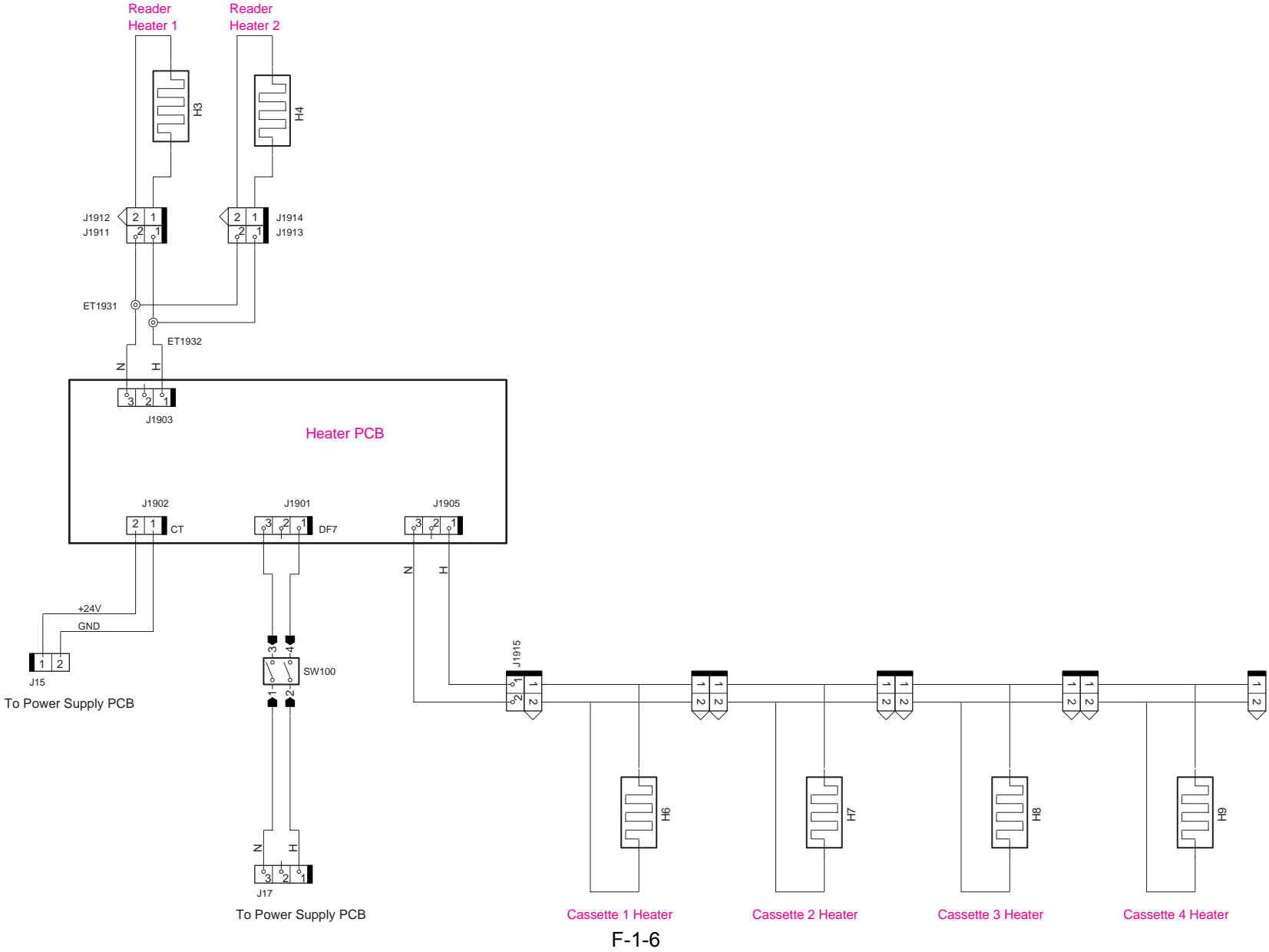
F-1-3



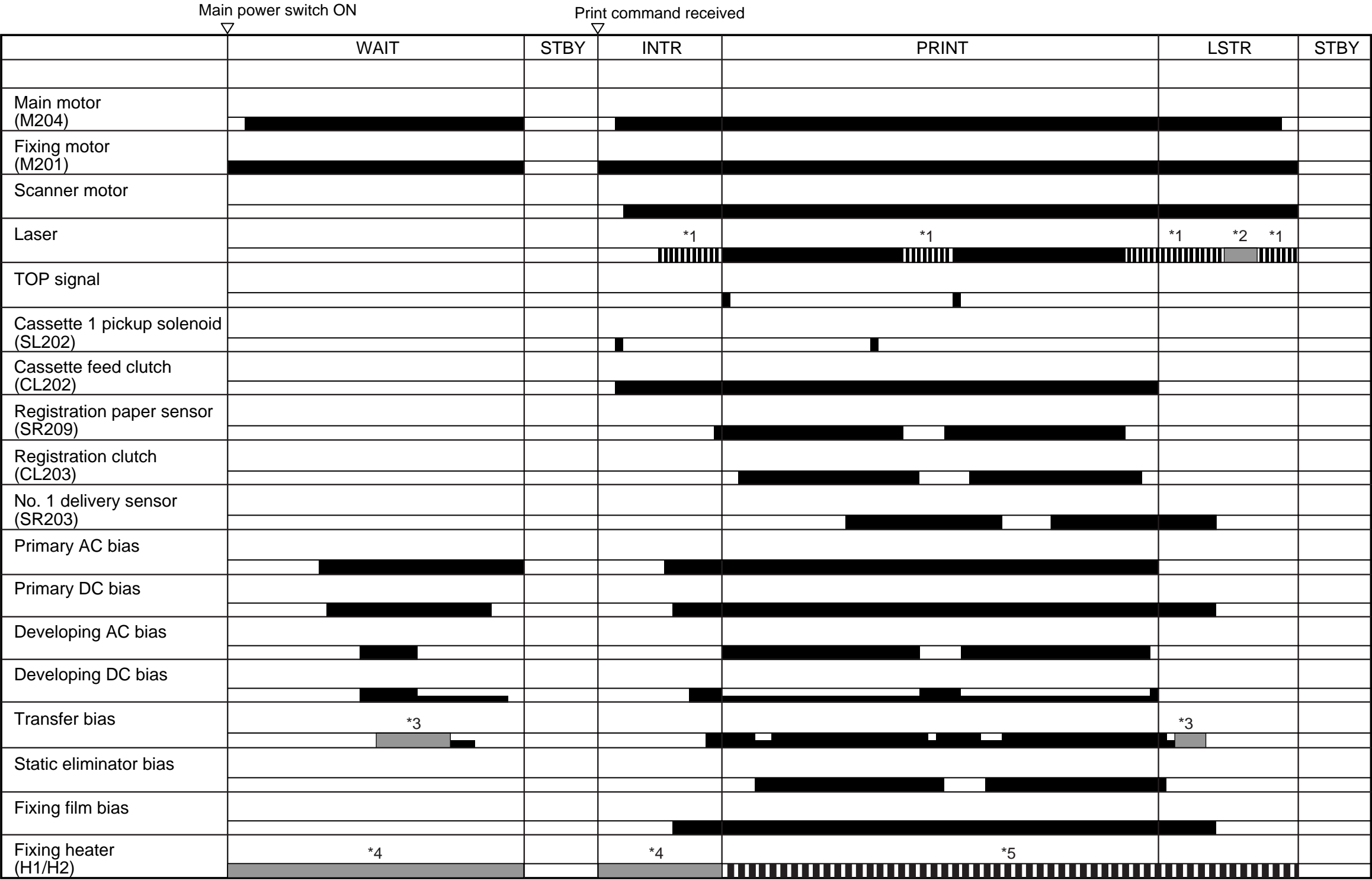


F-1-5

General Circuit Diagram 7



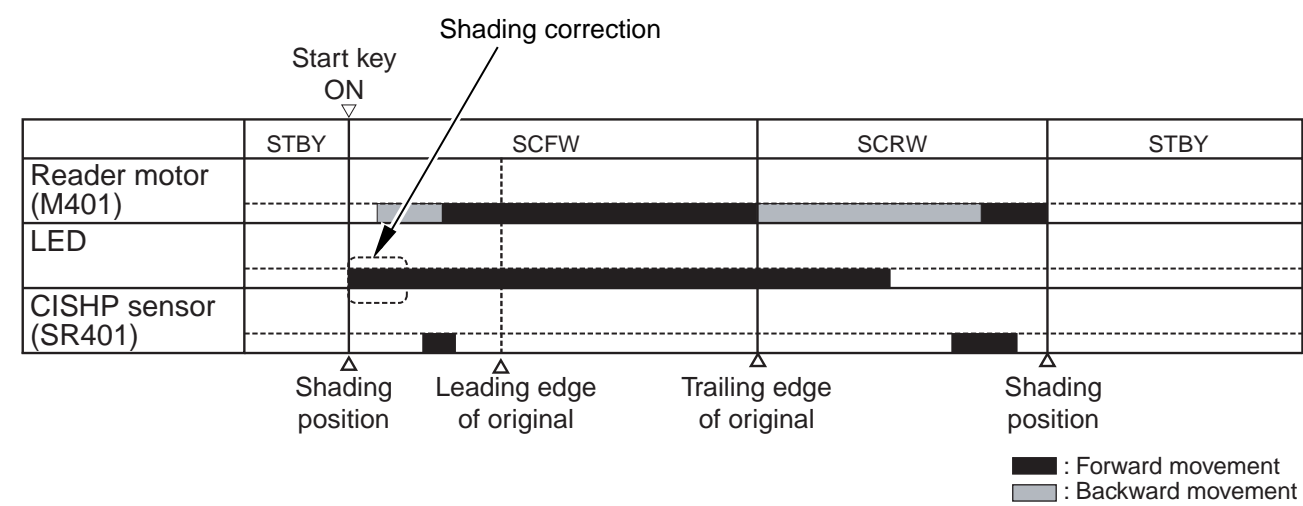
2 General Timing Chart
At Time of Printing
2 Prints, Continuous, Cassette 1



*1: Horizontal synchronization control
*2: Automatic photocurrent control (APC)
*3: Cleaning bias
*4: Target temperature control
*5: Temperature control in accordance with the fixing mode

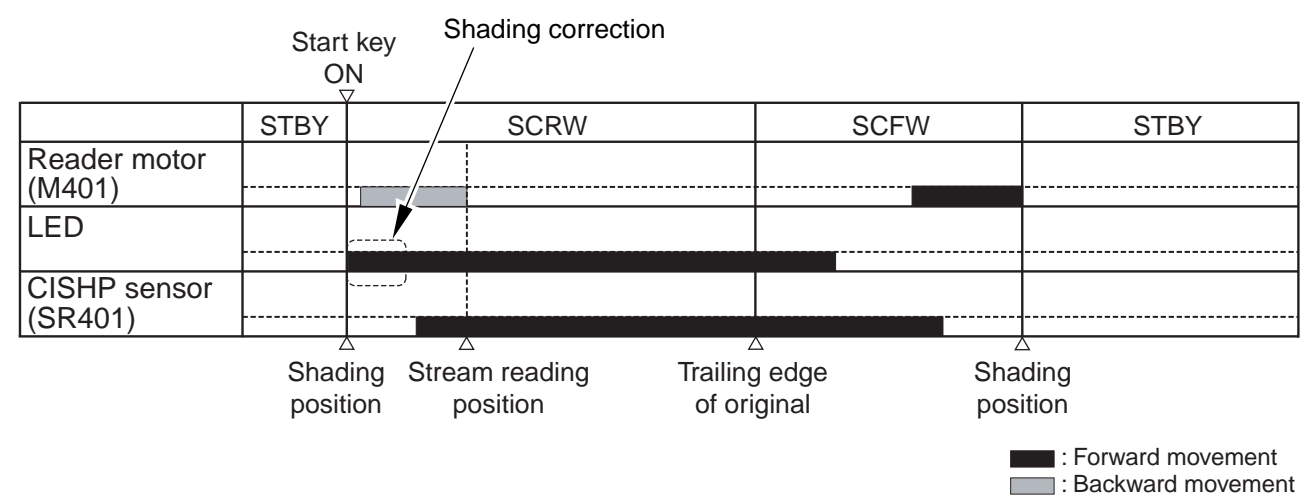
Reader Unit

Basic Sequence of Operation (in response to a press on the start key; book mode; 1 original)



F-2-2

Basic Secure of Operation (in response to a press on the start key; ADF mode, 1 original)



F-2-3

Jan 30 2006

Canon