

i860 / i865

PIXUS 860i

PARTS

CATALOG

REVISION 0

8536A001AA	120V(US)
8536A002AA	120V(CA)
8536A005AA	220V-240V(EUR)
8536A006AA	220V-240V(DE)
8536A007AA	220V-240V(FR)
8536A008AA	220V-240V(ASA HVT)
8536A009AA	220V-240V(AU)
8536A010AA	220V-240V(KR)
8536A011AA	220V-240V(GB)
8536A012AA	100V(JP)
8536A013AA	120V(TW)
8536A014AA	220V-240V(HK)
8536A015AA	220V-240V(CN)

Canon

AUG. 2003

QY8-31BU-000

TONER
www.tonerplus.com.ua

0803 N 0.00-0

i860 / i865 PIXUS 860i PARTS CATALOG



Canon

Application

This manual has been issued by Canon Inc. for qualified person to learn technical theory, installation, maintenance, and repair of products. This manual covers all localities where the products are sold. For this reason, there may be information in this manual that does not apply to your locality.

Corrections

This manual could include technical inaccuracies or typographical errors due to improvements or changes in the products. When changes occur in applicable products or in the content of this manual, Canon will release technical information as the need arises. In the event of major changes in the contents of this manual over a long or short period, Canon will issue a new editions of this manual.

The following paragraph does not apply to any countries where such provisions are inconsistent with local law.

Trademarks

The product names and company names described in this manual are the registered trademarks of the individual companies.

Copyright

This manual is copyrighted with all rights reserved. Under the copyright laws, this manual may not be copied, reproduced or translated into another language, in whole or in part, without the written consent of Canon Inc.

Copyright © 2003 by Canon Inc.

CANON INC.

Inkjet Products Quality Assurance Div.

16-1, Shimonoge 3-chome, Takatsu-ku, Kawasaki-shi,
Kanagawa 213-8512, Japan

DTP System

This manual was produced on an Apple® Power Macintosh® G3 personal computer and Canon LBP-2030PS laser beam printer.

Parts layout pictures were taken using Canon Digital Camera EOS D30, and edited with Adobe® Photoshop® 5.0.

KEY No. and Logotypes were created using

MACROMEDIA® FreeHand® 8J.

Documents and page layouts were created using

QuarkXpress® 3.3J.

Parts lists were created using Helix Technologies® Herix Xpress® and converted to EPS files.

I. CONTENTS

- A. ILLUSTRATION INDEX
- B. PARTS LAYOUT & PARTS LIST
- C. OPTIONS & CONSUMABLES
- D. SCREWS & WASHERS LIST
- E. TOOL
- F. NUMERICAL INDEX

II. ABOUT THIS MANUAL

A. ILLUSTRATION INDEX

For illustration index, the parts layout illustrations in this parts catalog are listed in abbreviated form in order of illustration number to identify the pages they appear on. To find an illustration of a part, see the ILLUSTRATION INDEX.

B. PARTS LAYOUT & PARTS LIST

Parts layout illustration

a) Parts search

Find a part from the parts layout illustration and find its key number from the parts list to identify the part number and name. For screws, nuts, washers, lock washers, pins, spacers, see SCREWS & WASHERS LIST.

Note: If parts have the same or similar shape but different specifications, their key number is assigned to several part numbers and names in the parts list.

b) Parts replacement procedure

To replace parts, the parts layout illustrations have figure numbers according to the disassembly procedure of the product. The parts that require careful work are shown the illustration.

Parts list

a) FIGURE & KEY No.

The FIGURE & KEY No. column corresponds to the key numbers assigned to the parts in the parts layout illustration. It also corresponds to the part locations printed on the PC board.

b) PART NUMBER

The PART NUMBER column gives the part numbers corresponding to the key numbers. To order a part, indicate the part number clearly.

Note: Parts marked NPN are not service parts.

c) RANK

The service parts with N in the RANK column are order parts.

d) QTY

The QTY column gives the number of parts in the corresponding components layout illustration.

e) DESCRIPTION

The DESCRIPTION column gives the part names in English.

To order a part, indicate the part name, too.

C. OPTIONS & CONSUMABLES

These are illustrations and a list of units that can be used as optional consumable equipments.

D. SCREWS & WASHERS LIST

This is a list of screws, nuts, washers, lock washers, pins, and spacers.

The QTY column does not give the number of parts used.

E. TOOL LIST

This is a list of tools used for servicing products.

F. NUMERICAL INDEX

All the parts listed in this parts catalog are arranged in order of part number. You can identify part locations and names from the NUMERICAL INDEX.

This page intentionally left blank

A. ILLUSTRATION INDEX

FIGURE 1 PRINTER & PRINT HEAD

See Page
B - 1



FIGURE 2 AC ADAPTER

See Page
B - 3

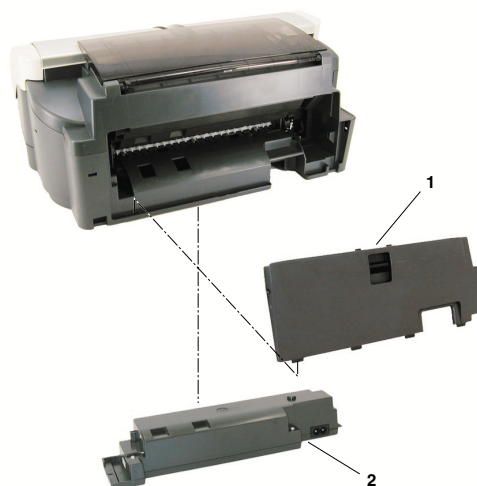


FIGURE 3 OPERATION PANEL UNIT & UPPER COVER UNIT

See Page
B - 5

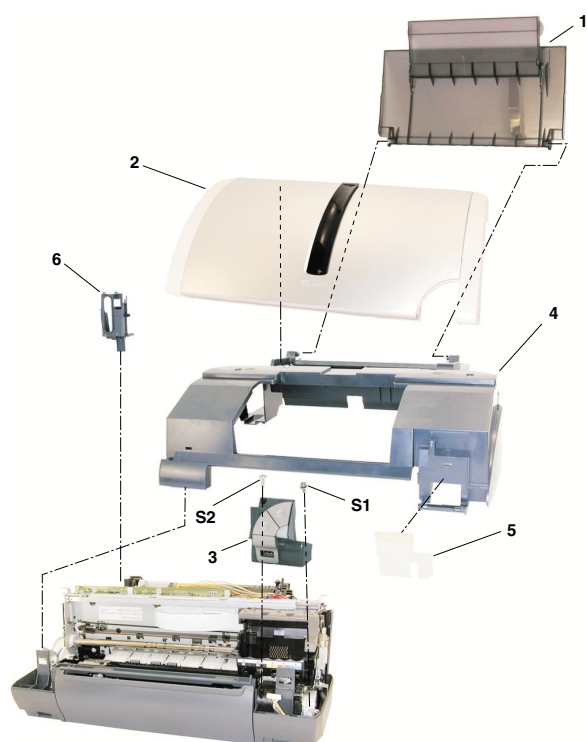


FIGURE 4 LOGIC BOARD

See Page
B - 7

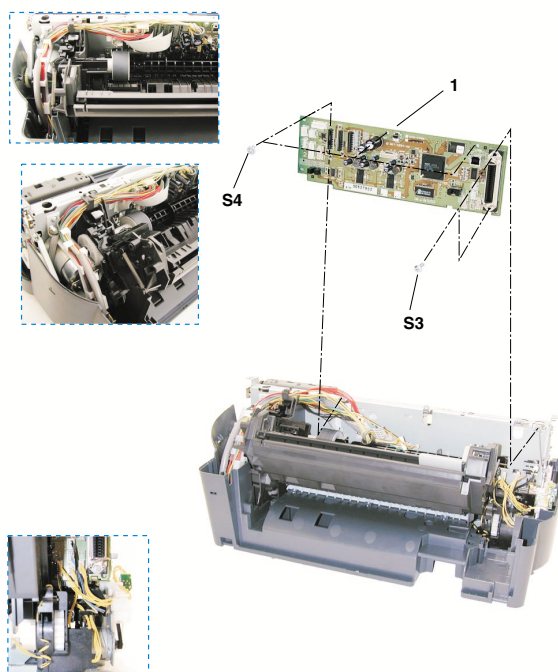


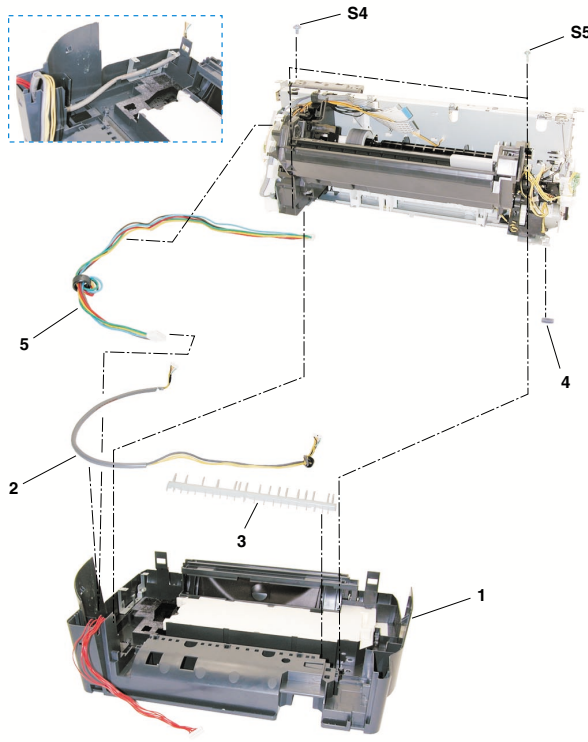
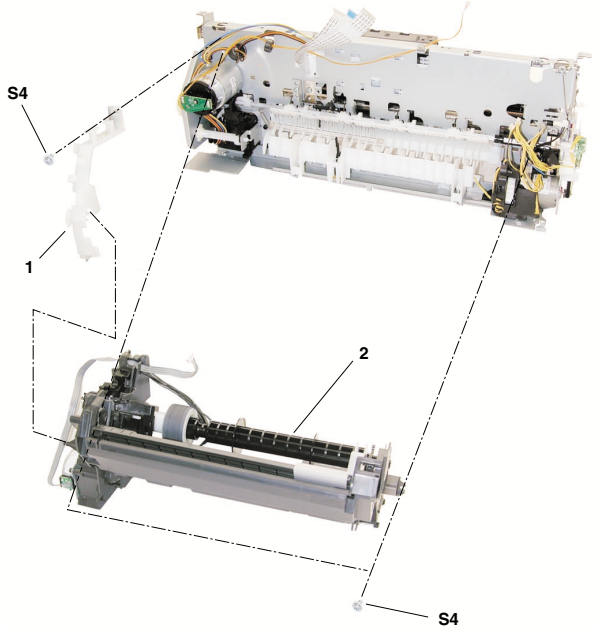
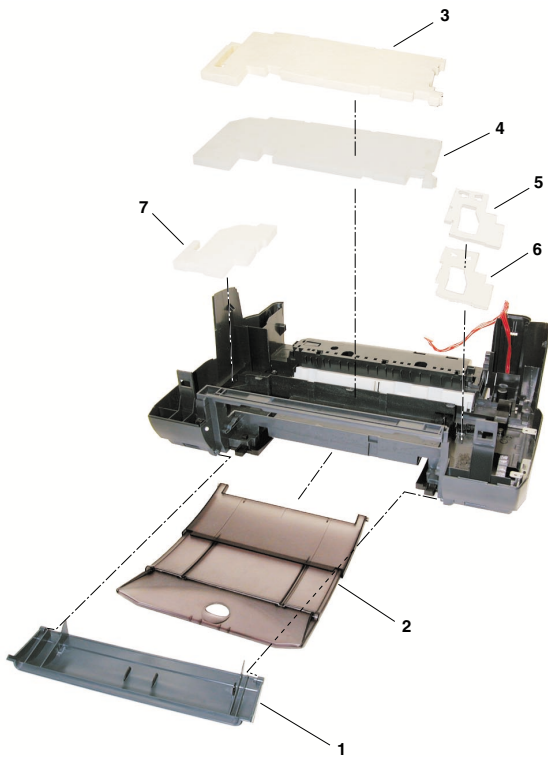
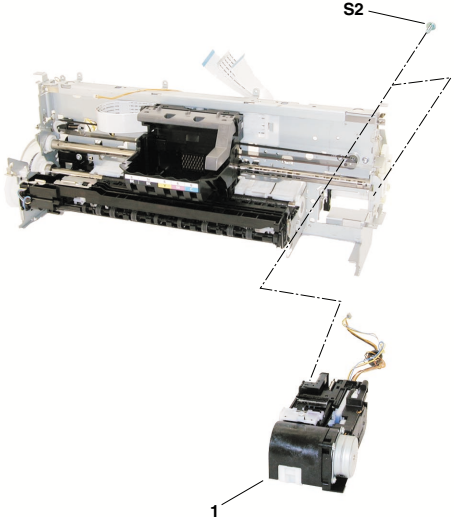
FIGURE 5 BOTTOM CASE UNIT	See Page B - 9	FIGURE 6 SHEET FEED UNIT	See Page B - 11
			
FIGURE 7 OUTPUT TRAY & INK ABSORBER	See Page B - 13	FIGURE 8 PURGE UNIT	See Page B - 15
			

FIGURE 9 CARRIAGE UNIT

See Page
B - 17

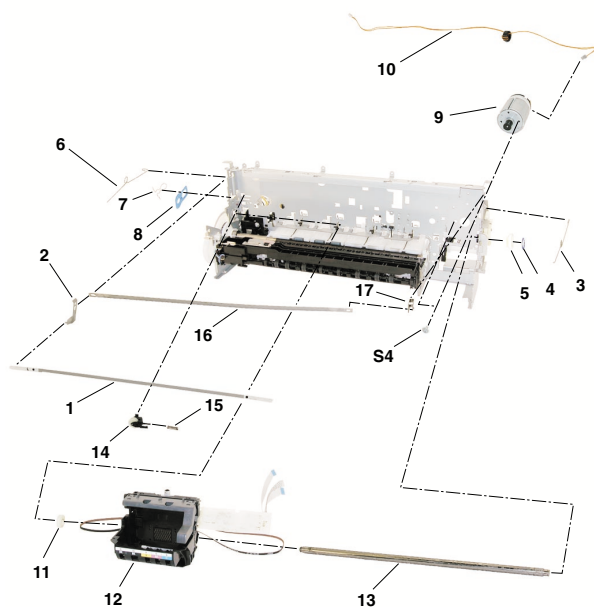


FIGURE 10 CARRIAGE LIFT PART

See Page
B - 19

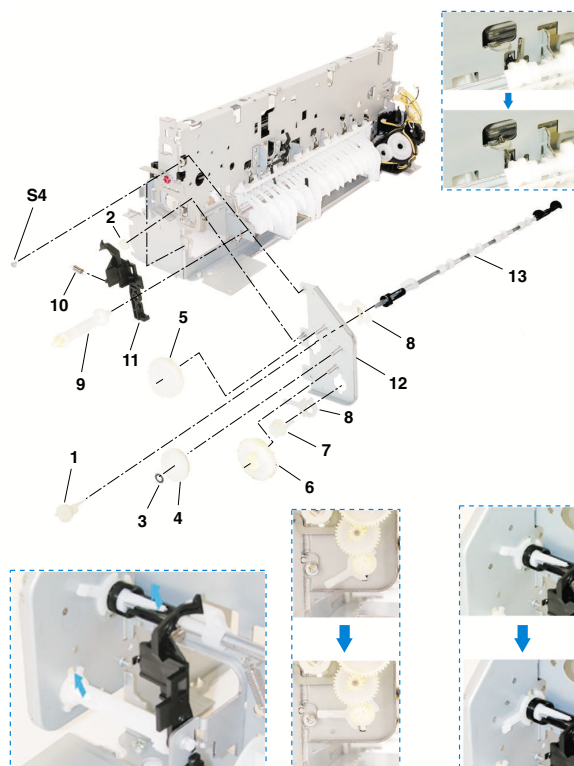


FIGURE 11 PAPER FEED PART

See Page
B - 21

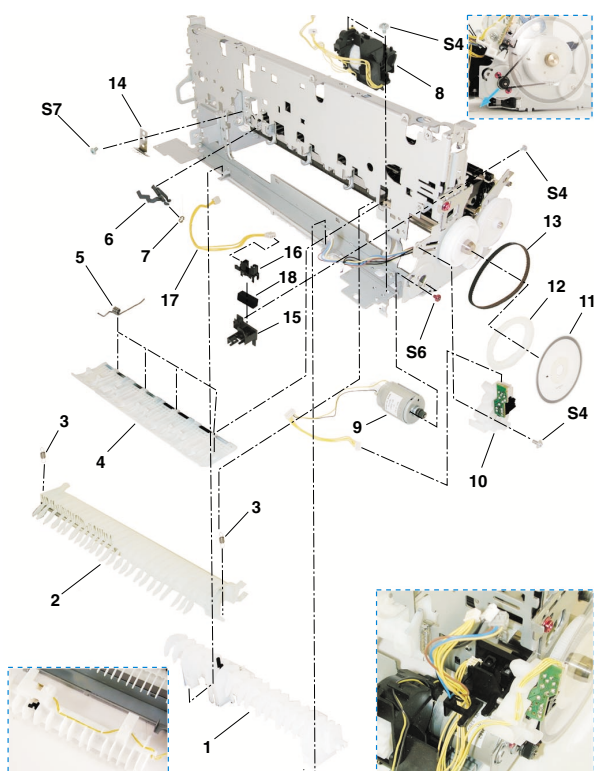


FIGURE 12 PLATEN & FEED ROLLER

See Page
B - 23

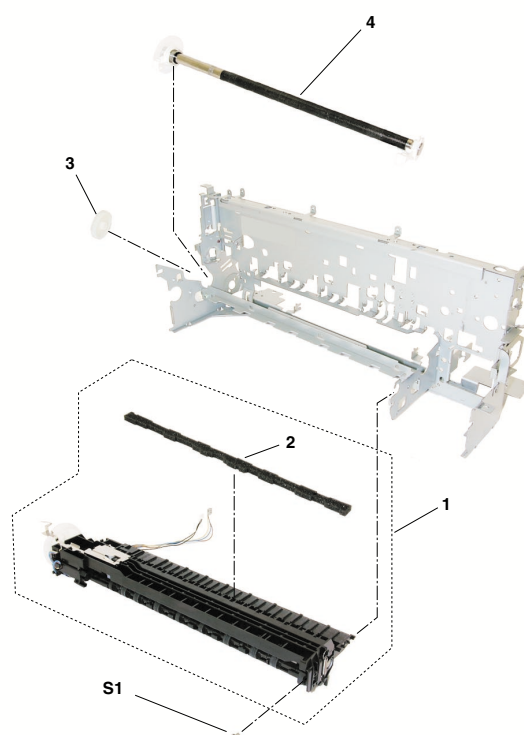
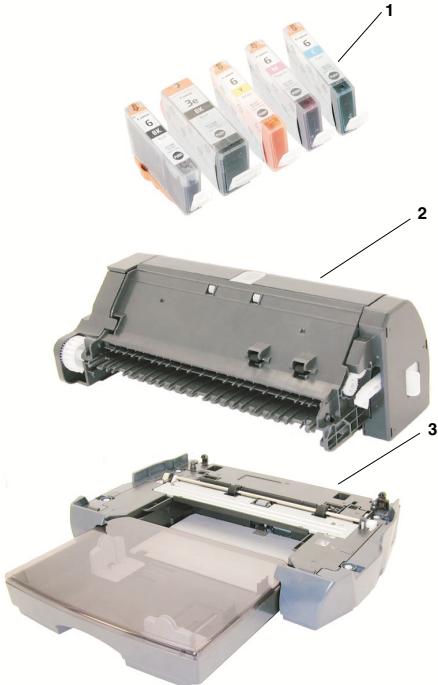
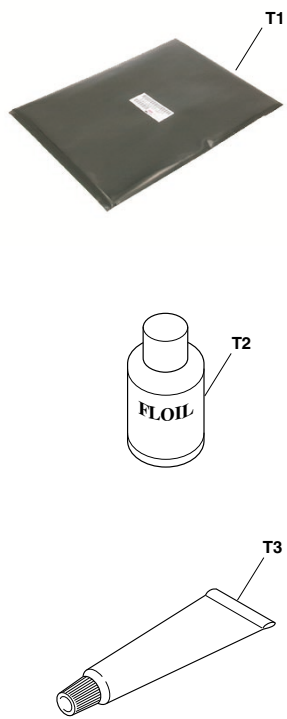


FIGURE 13 OPTION & CONSUMABLES	See Page C - 1	FIGURE 14 TOOL	See Page E - 1
			

B. PARTS LAYOUT & PARTS LIST

FIGURE 1 PRINTER & PRINT HEAD

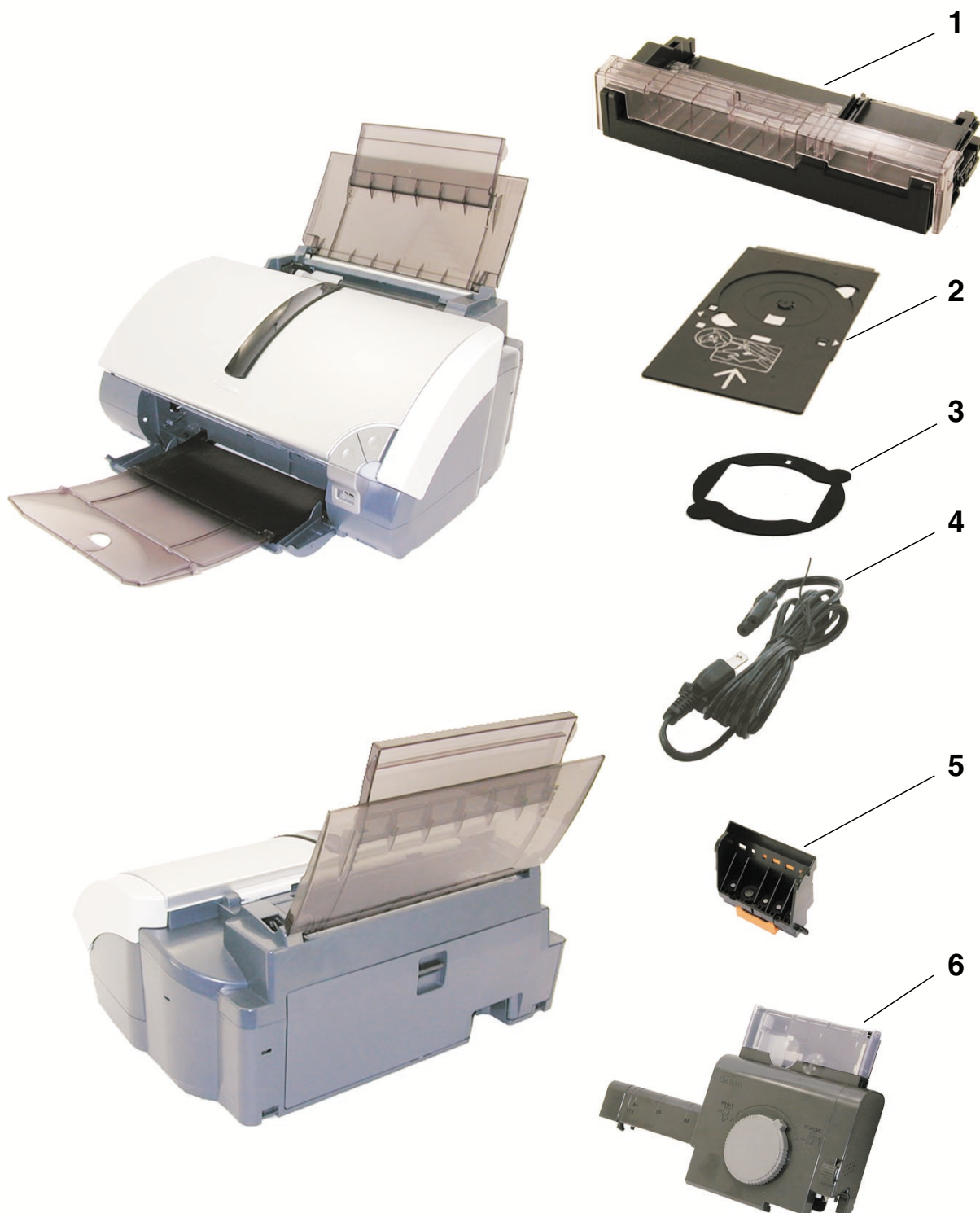


FIGURE & KEY NO.	PART NUMBER	R A N K	Q T Y	DESCRIPTION	REMARKS
1- 1	QM2-0626-000		1	TRAY GUIDE UNIT	
2	QL2-0348-000		1	CDR TRAY ASS'Y	
3	QA4-1117-000		1	TRAY, CD SUB	
4	QH2-2724-000		1	CORD, POWER	100V-120V(JP)
	QH2-2725-000		1	CORD, POWER	100V-120V
	QH2-2726-000		1	CORD, POWER	220V-240V
	QH2-2727-000		1	CORD, POWER	220V-240V(AU)
	WT3-5156-000		1	CORD, POWER	220V-240V(GB, HK)
	WT3-5160-000		1	CORD, POWER	220V-240V(KR)
	WT3-5182-000		1	CORD, POWER	220V-240V(CHN)
5	QY6-0049-000		1	PRINT HEAD	
6	QM2-0603-000		1	PHOTO PAPER TRAY UNIT	

FIGURE 2 AC ADAPTER

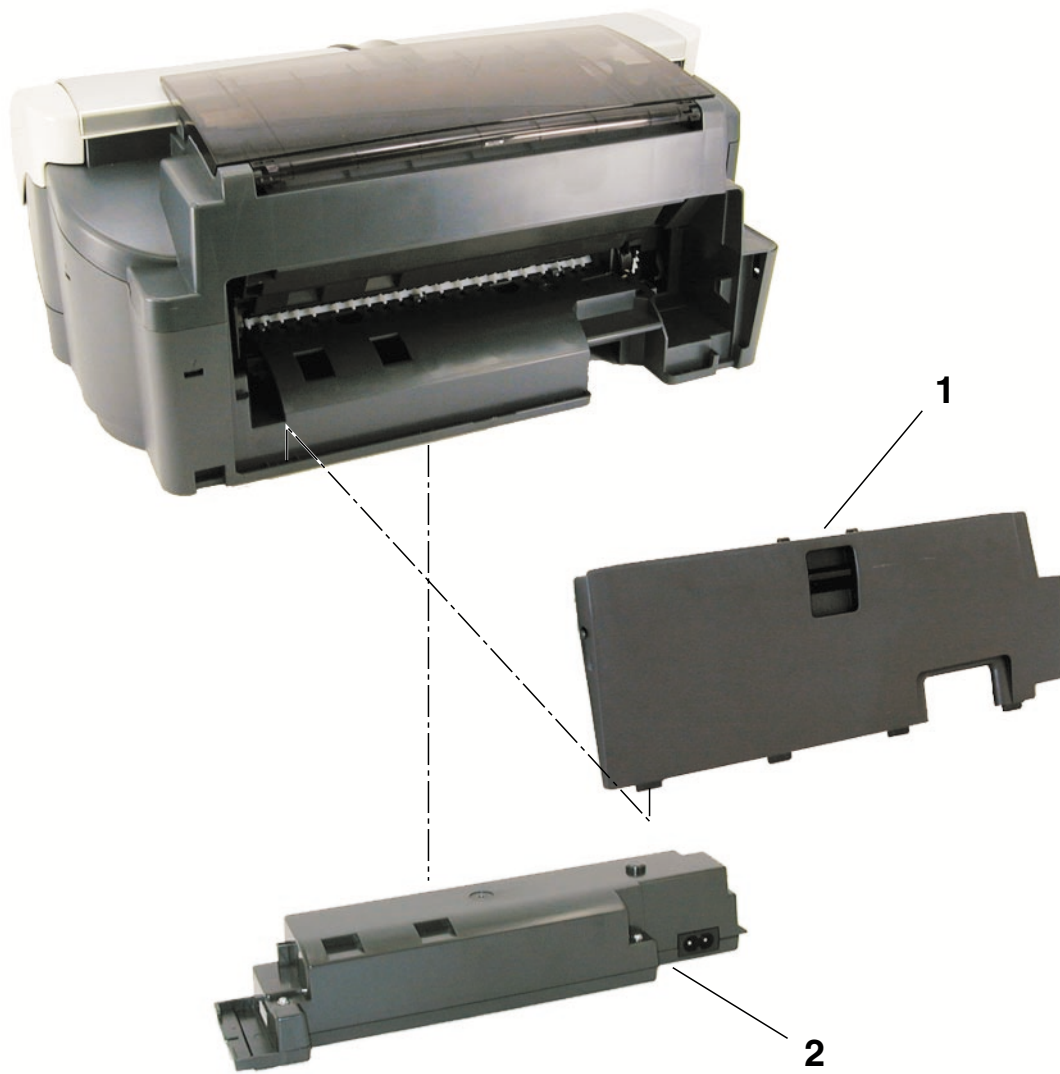



FIGURE & KEY NO.	PART NUMBER	R A N K	Q T Y	DESCRIPTION	REMARKS
2- 1 2	QM2-0630-000	N N	1	BSU COVER UNIT	US, CA, JP EUR, DE, FR, GB, HK
	QK1-0232-000		1	AC ADAPTER: 100V-120V 50/60HZ	
	QK1-0233-000		1	AC ADAPTER: 220V-240V 50/60HZ	
	QK1-0247-000		1	AC ADAPTER: 100V-120V 50/60HZ	
	QK1-0249-000		1	AC ADAPTER: 220V-240V 50/60HZ	
					

FIGURE 3 OPERATION PANEL UNIT & UPPER COVER UNIT

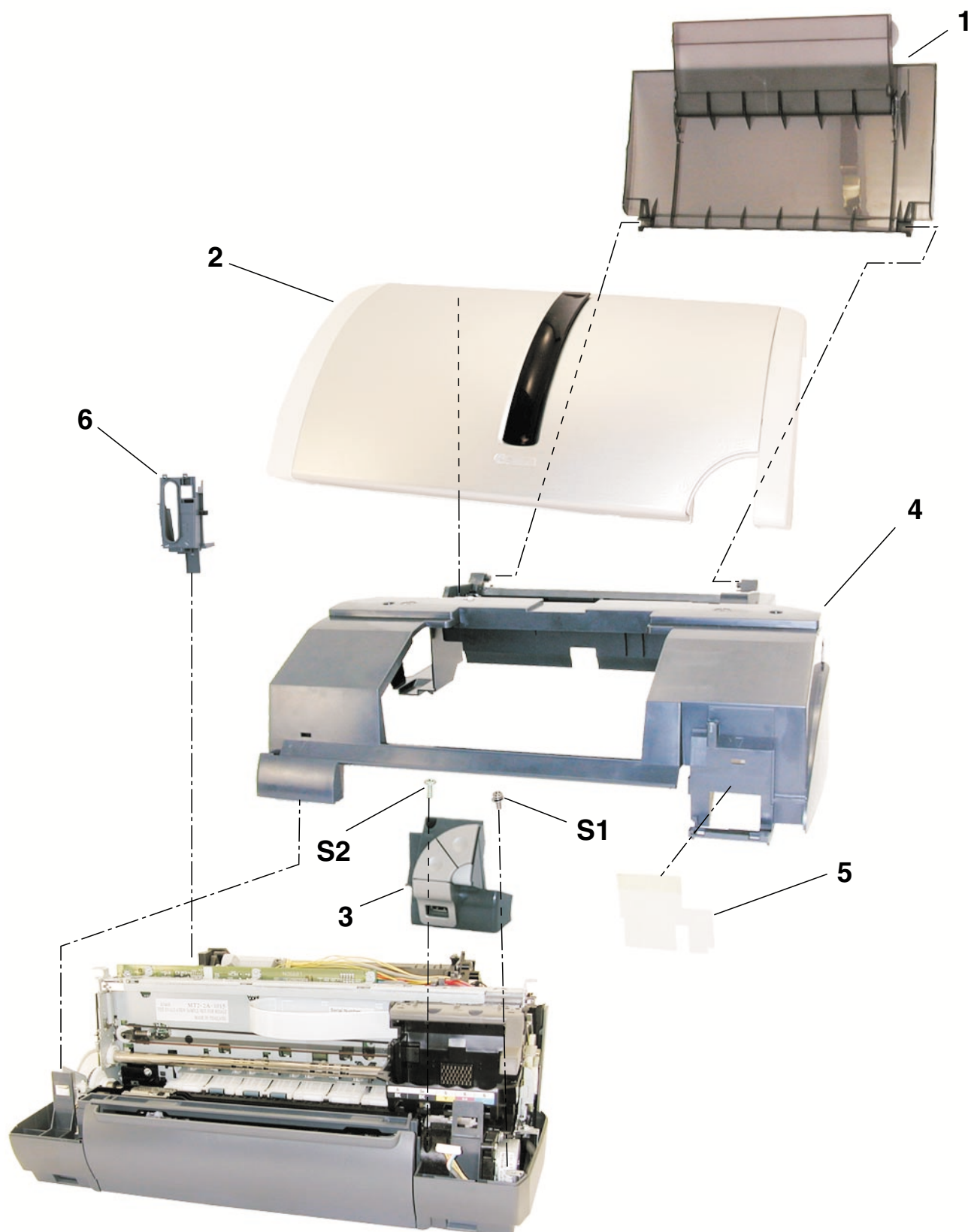


FIGURE & KEY NO.	PART NUMBER	R A N K	Q T Y	DESCRIPTION	REMARKS
3 - 1	QM2-0588-000		1	PAPER SUPPORT UNIT	FOR i860 FOR PIXUS 860i FOR i865
2	QM2-0631-000		1	ACCESS COVER ASS'Y	
	QM2-0632-000		1	ACCESS COVER ASS'Y	
	QM2-0633-000		1	ACCESS COVER ASS'Y	
3	QM2-0585-000		1	OPERATION PANEL ASS'Y	
4	QM2-0584-000		1	UPPER COVER UNIT	
5	QC1-2507-000		1	SHEET, MIST	
6	QC1-2214-000		1	COVER, I/F	

FIGURE 4 LOGIC BOARD

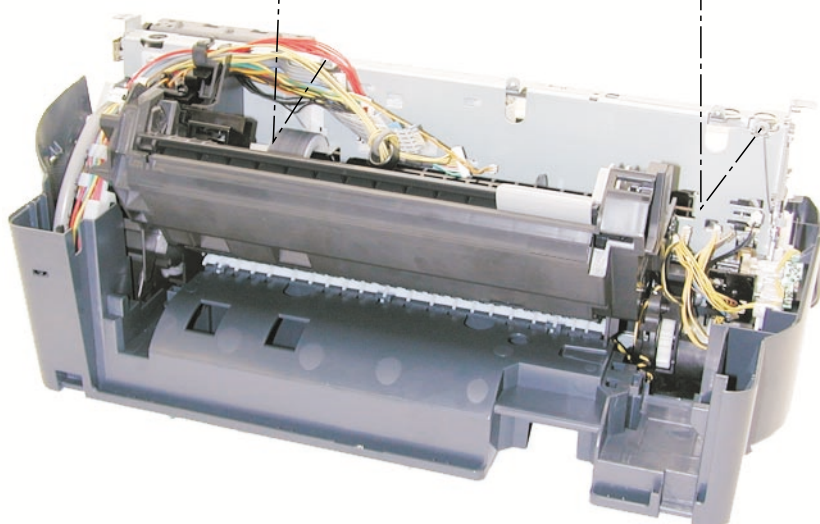
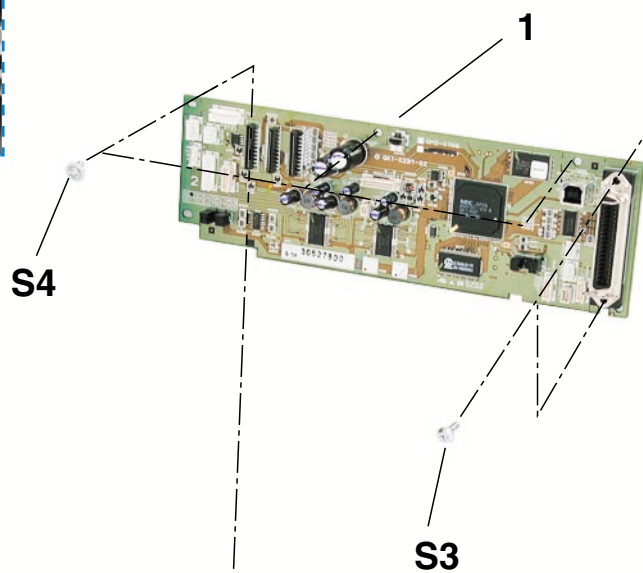
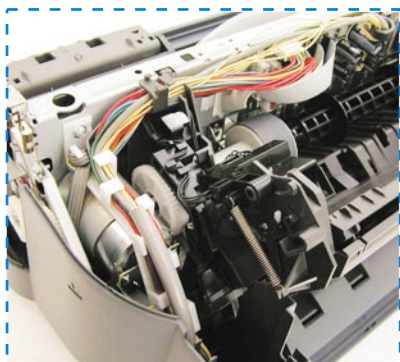
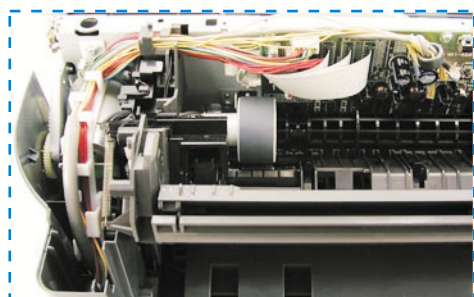


FIGURE 5 BOTTOM CASE UNIT

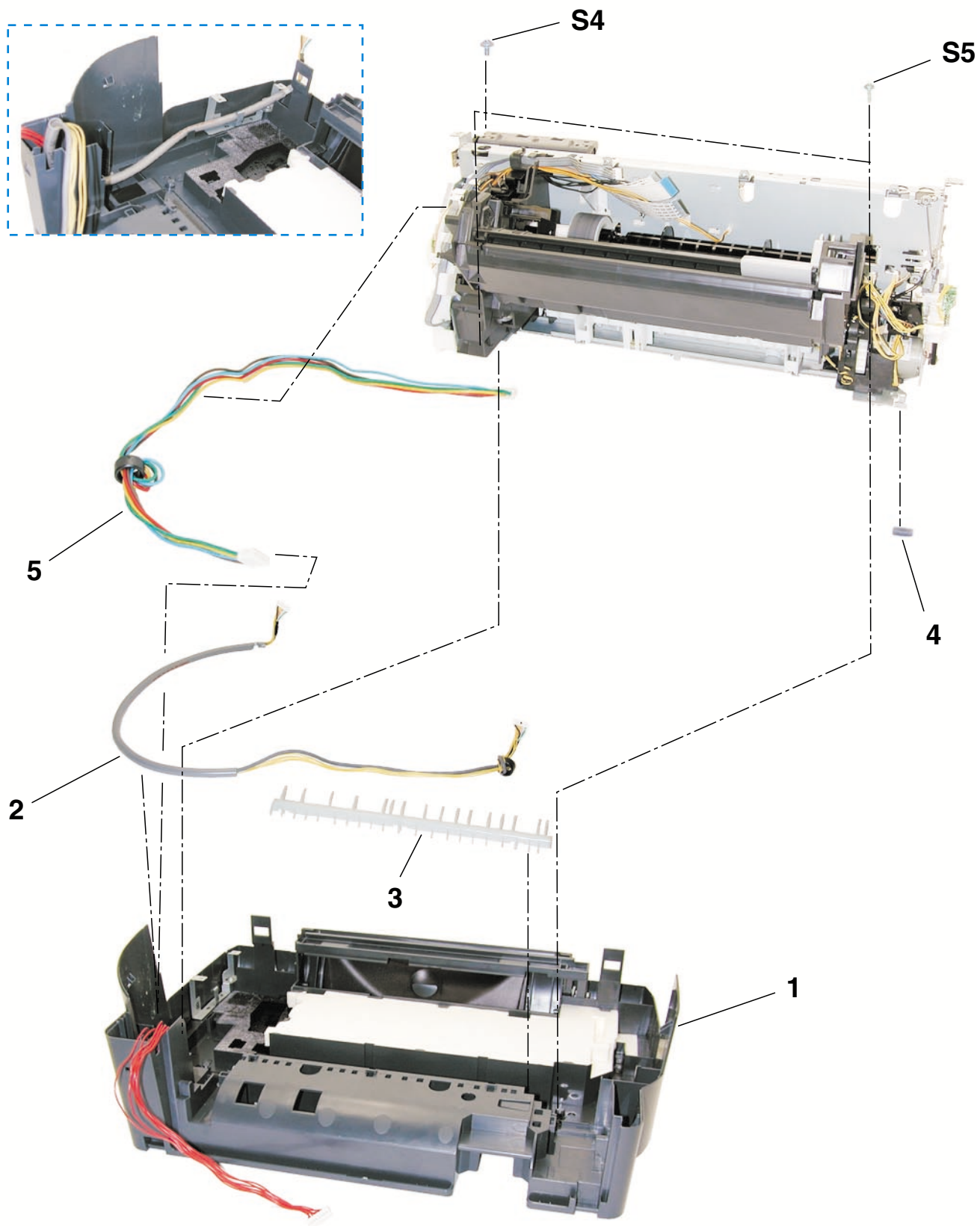



FIGURE & KEY NO.	PART NUMBER	R A N K	Q T Y	DESCRIPTION	REMARKS
5 - 1	QM2-0586-000		1	BOTTOM CASE UNIT	
2	QM2-1154-000		1	PANEL HARNESS ASS'Y	
3	QC1-2230-000		1	FLAPPER, PAPER FEED CASSETTE	
4	QC1-2509-000		1	SPONGE, MIST	
5	QM2-0777-000		1	DC CONNECTOR ASS'Y	
					

FIGURE 6 SHEET FEED UNIT

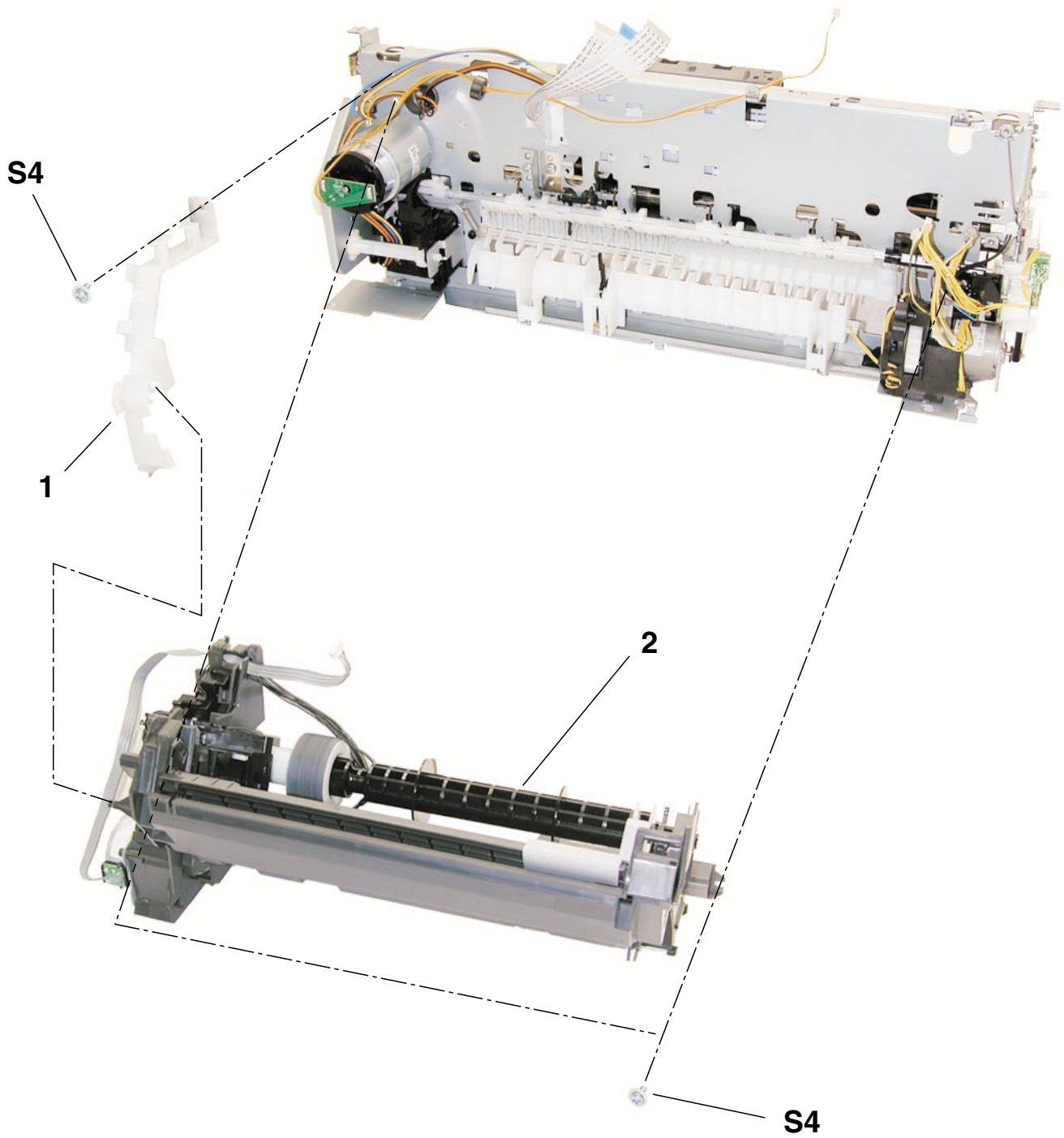


FIGURE & KEY NO.	PART NUMBER	R A N K	Q T Y	DESCRIPTION	REMARKS
6 - 1 2	QC1-2491-000 QM2-0589-000		1 1	GUIDE, HARNESS SHEET FEEDER UNIT	W/ MEDIA SENSOR

FIGURE 7 OUTPUT TRAY & WASTE INK ABSORBER

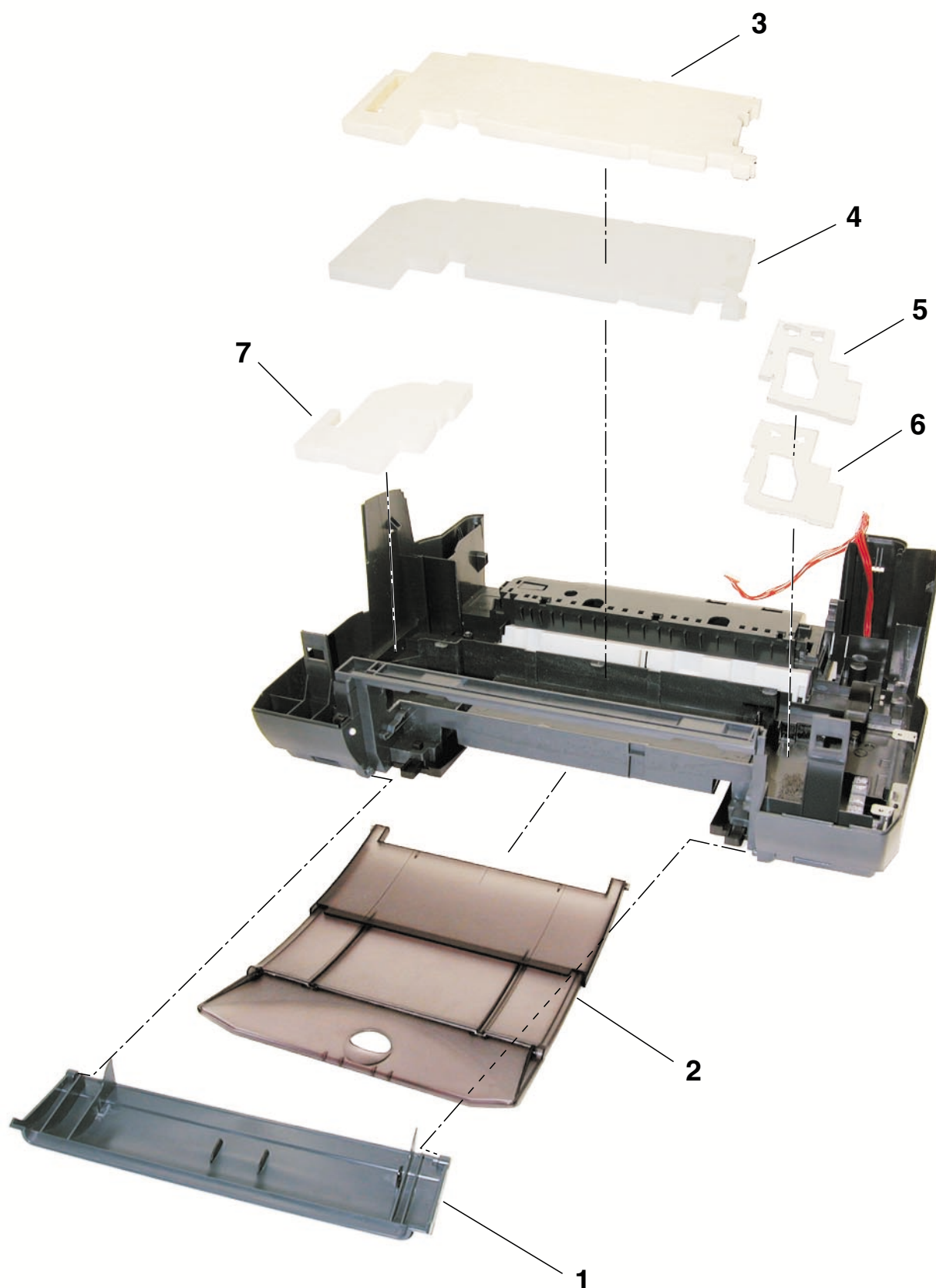


FIGURE & KEY NO.	PART NUMBER	R A N K	Q T Y	DESCRIPTION	REMARKS
7 - 1	QC1-2240-000		1	COVER, OUT PUT TRAY	
2	QM2-0587-000		1	OUT PUT TRAY UNIT	
3	QC1-2235-000		1	ABSORBER, INK	
4	QC1-2234-000		1	ABSORBER, INK	
5	QC1-2233-000		1	ABSORBER, INK	
6	QC1-2232-000		1	ABSORBER, INK	
7	QC1-2236-000		1	ABSORBER, INK	

FIGURE 8 PURGE UNIT

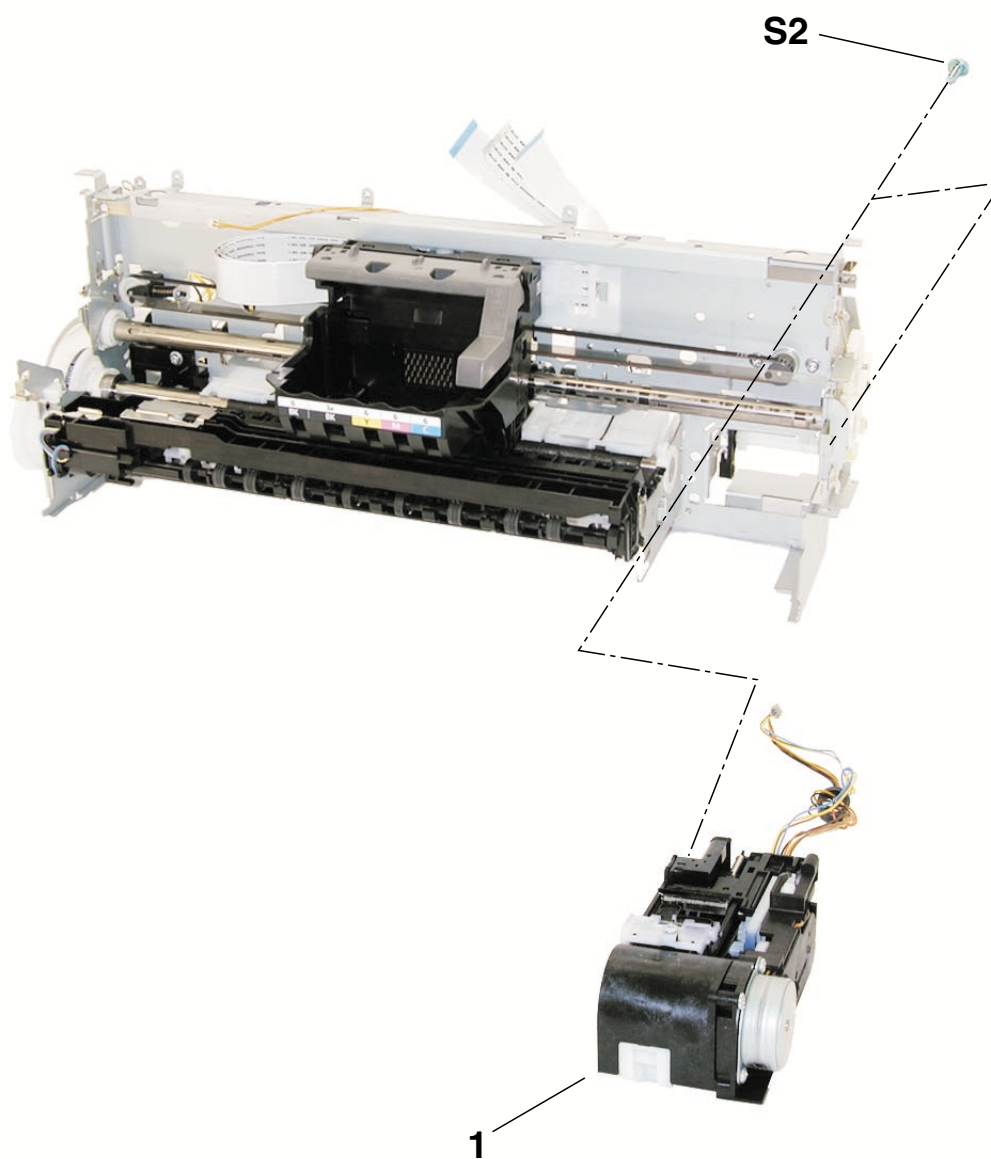


FIGURE & KEY NO.	PART NUMBER	R A N K	Q T Y	DESCRIPTION	REMARKS
8 - 1	QM2-0600-000		1	PURGE UNIT	

FIGURE 9 CARRIAGE UNIT

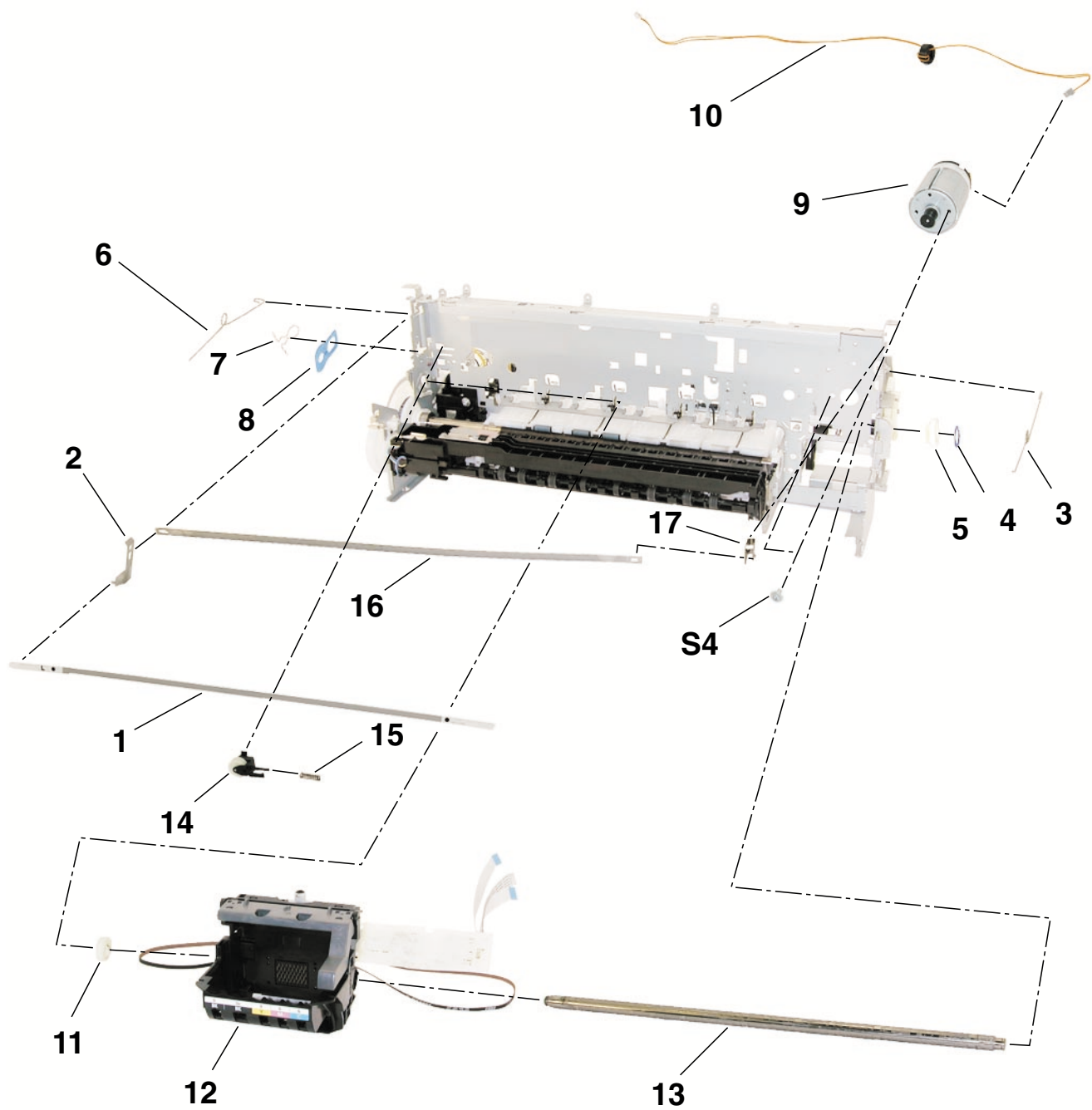


FIGURE & KEY NO.	PART NUMBER	R A N K	Q T Y	DESCRIPTION	REMARKS
9 - 1	QA4-1053-000		1	FILM, TIMING SLIT STRIP	
2	QA4-0990-000		1	SPRING, LEAF	
3	QC1-2285-000		1	CLIP, SHAFT R	
4	QC1-2289-000		1	RING, CARRIAGE SHAFT	
5	QC1-2299-000		1	CAM, CARRIAGE SHAFT R	
6	QC1-2284-000		1	CLIP, SHAFT L	
7	QC1-2510-000		1	CLIP, CARRIAGE SHAFT	
8	QC1-2288-000		1	PLATE, CARRIAGE SHAFT	
9	QK1-0175-000		1	MOTOR, CARRIAGE	
10	QM2-0795-000		1	CARRIAGE MOTOR HARNESS ASS'Y	
11	QC1-2300-000		1	CAM, CARRIAGE SHAFT L	
12	QM2-0599-000		1	CARRIAGE UNIT	
13	QC1-2281-000		1	SHAFT, CARRIAGE	
14	QF4-0153-000		1	IDLER ROLLER ASS'Y	
15	QC1-2290-000		1	SPRING, CARRIAGE BELT TENSION	
16	QA4-0987-000		1	PLATE, CARRIAGE SLIDE	
17	QA4-0988-000		1	SPRING, LEAF	

FIGURE 10 CARRIAGE LIFT PART

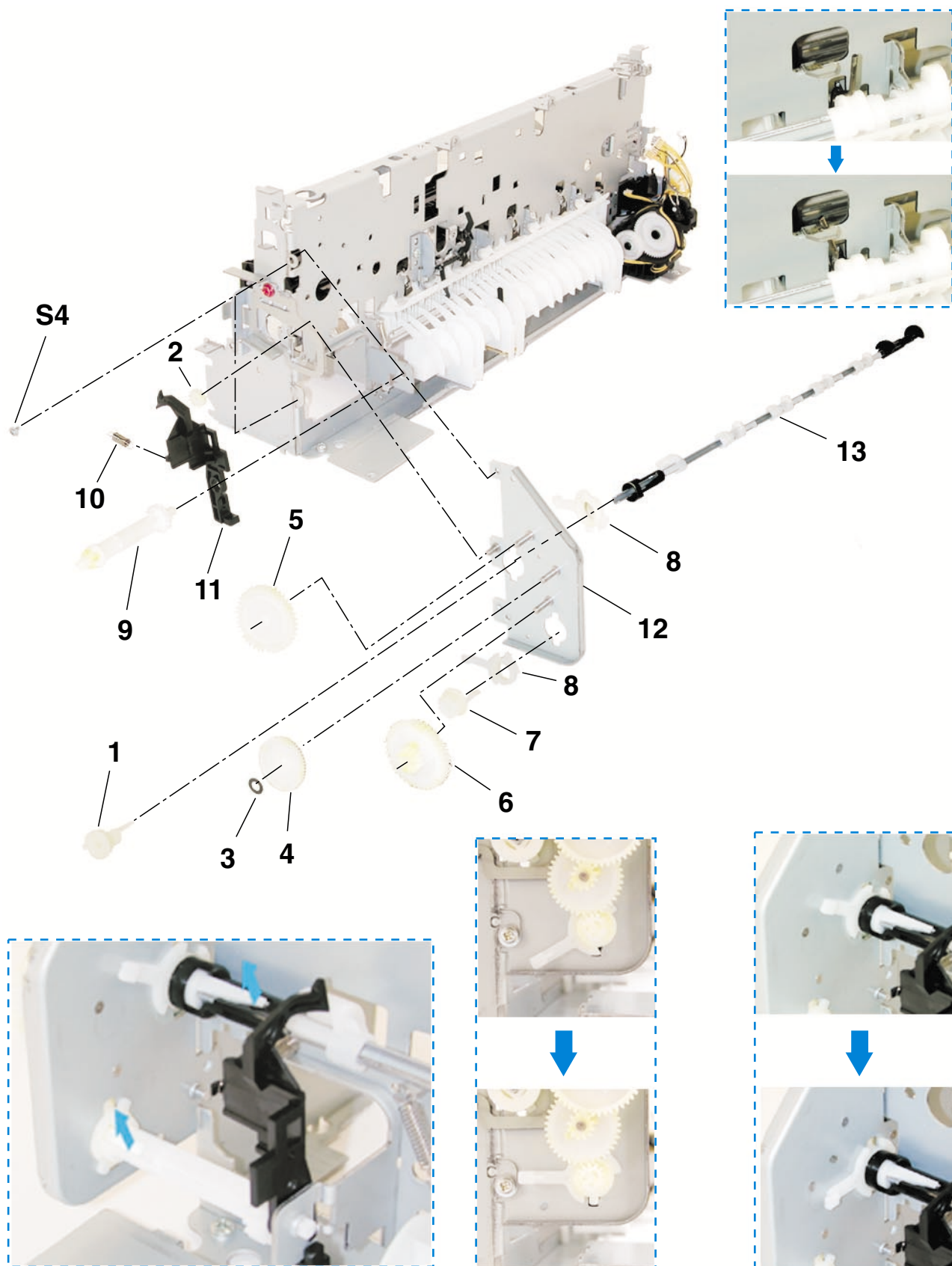


FIGURE & KEY NO.	PART NUMBER	R A N K	Q T Y	DESCRIPTION	REMARKS
10 - 1	QC1-2297-000		1	GEAR, LIFT SHAFT	
2	QC1-2298-000		1	GEAR, CARRIAGE INPUT	
3	QA4-1177-000		1	RING, LIFT GEAR	
4	QC1-2295-000		1	GEAR, LIFT TRANSMISSION	
5	QC1-2296-000		1	GEAR, LIFT TRANSMISSION	
6	QC1-2294-000		1	GEAR, LIFT TRANSMISSION	
7	QC1-2293-000		1	GEAR, LIFT INPUT	
8	QC1-2301-000		2	BUSHING	
9	QC1-2304-000		1	SHAFT, LIFT INPUT GEAR	
10	QC1-2303-000		1	SPRING, HOOK END COIL	
11	QC1-2302-000	N	1	LOCK, LIFT SHAFT	
12	QL2-0340-000		1	LIFT BASE ASS'Y	
13	QM2-0593-000		1	LIFT CAM SHAFT UNIT	

FIGURE 11 PAPER FEED PART

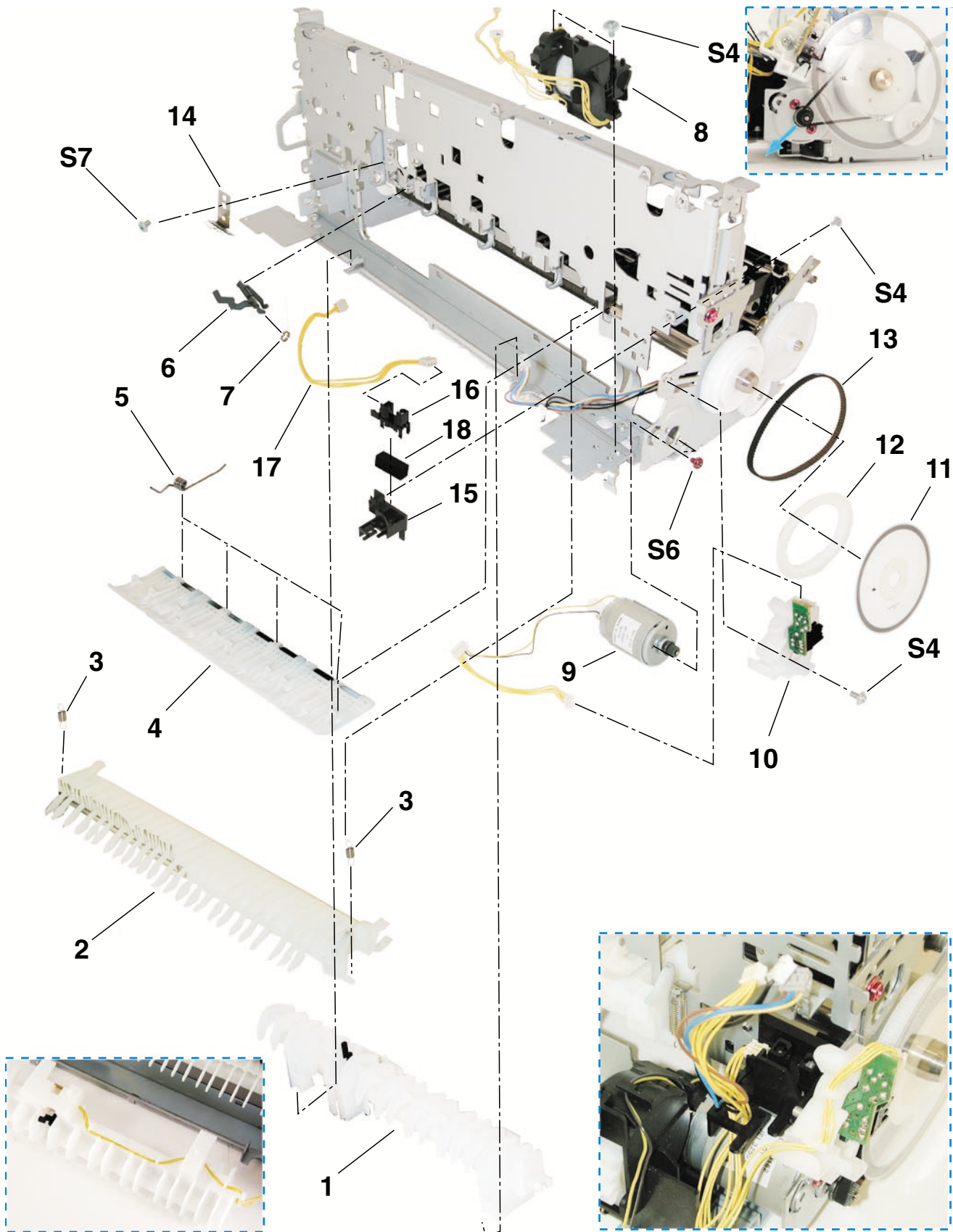


FIGURE & KEY NO.	PART NUMBER	R A N K	Q T Y	DESCRIPTION	REMARKS
11- 1	QM2-0598-000		1	U-TURN INNER GUIDE ASS'Y	W/ CDR PRINTING W/O CDR PRINTING
2	QL2-0341-000		1	PAPER GUIDE FLAPPER ASS'Y	
3	QC1-2291-000		2	SPRING, HOOK END COIL	
4	QM2-0597-000		1	PRESSURE ROLLER ASS'Y	
	QM2-0637-000		1	PRESSURE ROLLER ASS'Y	
5	QC1-2287-000		4	SPRING, TORSION	
6	QC1-2305-000		1	ARM, PAPER SENSOR	
7	QC1-2306-000		1	SPRING, TORSION	
8	QM2-0638-000		1	OPTION GEAR UNIT	
9	QM2-0810-000		1	PAPER FEED MOTOR UNIT	
10	QM2-0596-000		1	TIMING SENSOR UNIT	
11	QC1-2511-000		1	FILM, TIMING SLIT DISK	
12	QA4-1169-000		1	FLANGE, PULLEY	
13	QC1-2286-000		1	BELT, PAPER FEED	
14	QC1-2308-000		1	STATIC ELIMINATOR	
15	QC1-2292-000		1	BASE, LIFT SENSOR	
16	WG8-5571-000		1	PHOTO INTERRUPTER: TLP1243(C8)	
17	QM2-0792-000		1	LIFT CAM HARNESS ASS'Y	
18	QC1-2528-000		1	PAD	

FIGURE 12 PLATEN & FEED ROLLER

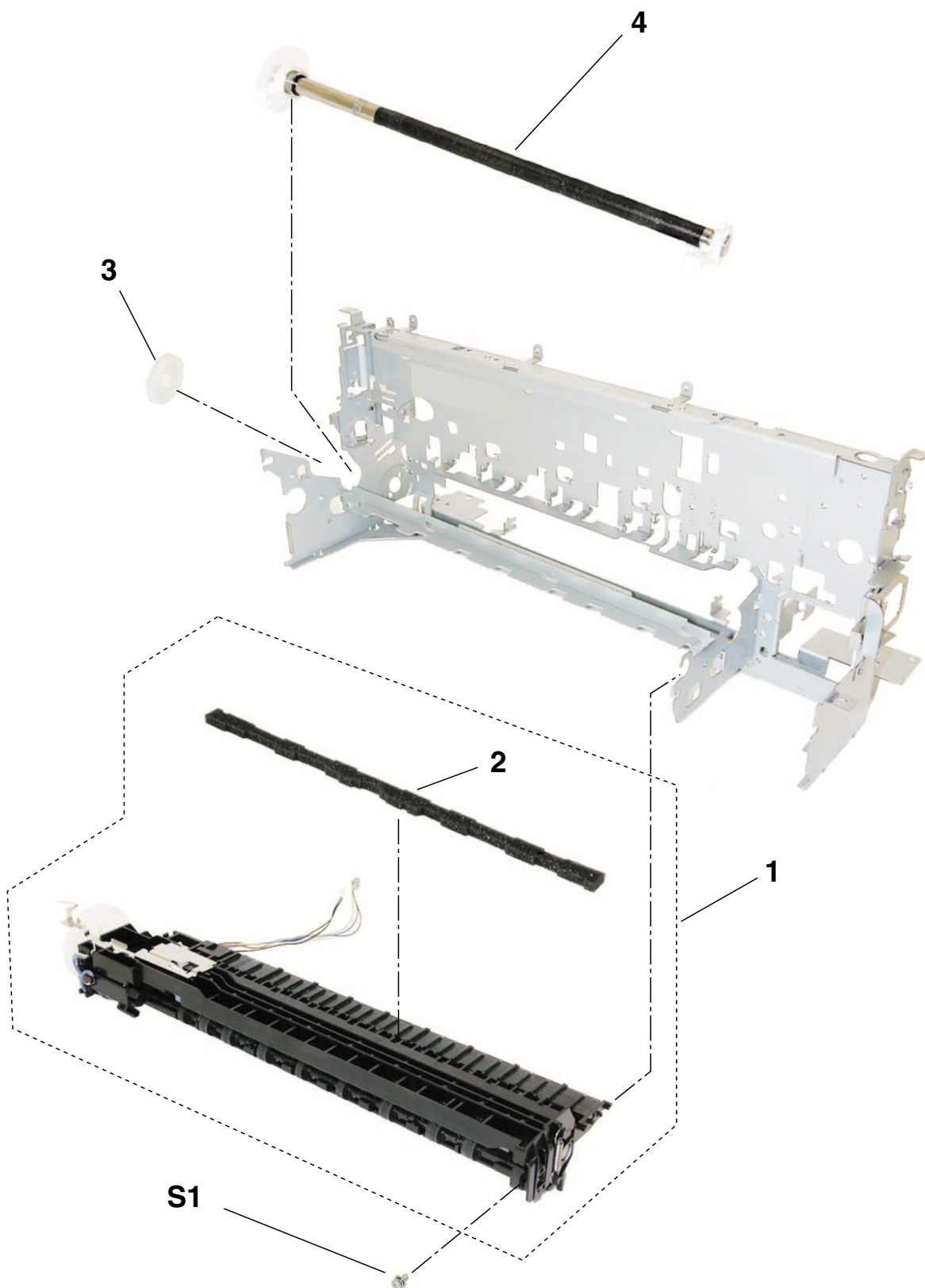


FIGURE & KEY NO.	PART NUMBER	R A N K	Q T Y	DESCRIPTION	REMARKS
12- 1	QM2-0627-000		1	PLATEN UNIT	W/ SPUR, W/ CDR PRINTING
	QM2-0634-000		1	PLATEN UNIT	W/ SPUR,W/O CDR PRINTING
2	QA4-1066-000		1	ABSORBER, INK	
3	QA4-1162-000		1	GEAR, EJECT	
4	QF4-0155-000		1	FEED ROLLER ASS'Y	

C. OPTIONS & CONSUMABLES

FIGURE 13 OPTION & CONSUMABLES

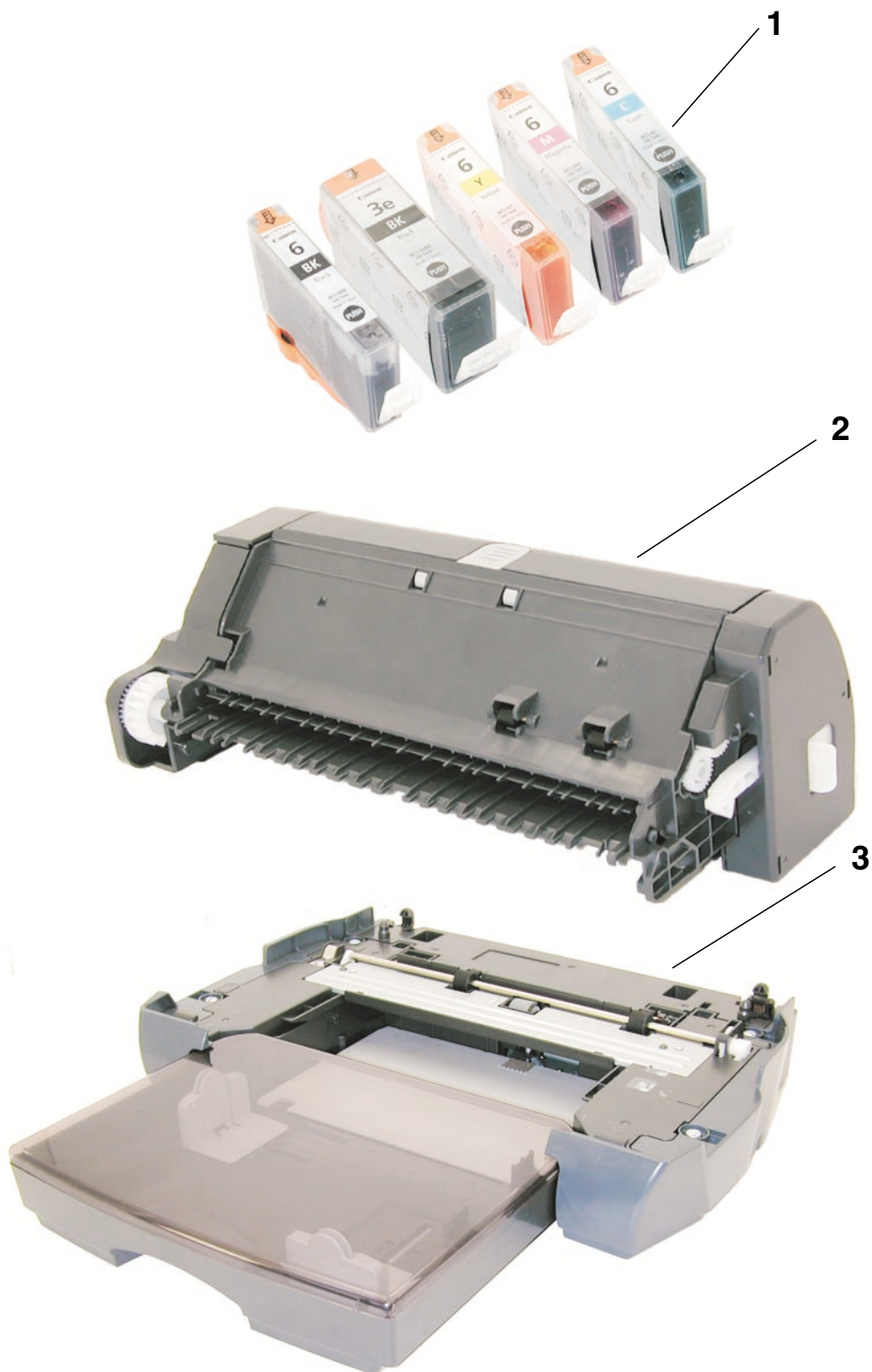


FIGURE & KEY NO.	PART NUMBER	R A N K	Q T Y	DESCRIPTION	REMARKS
13- 1	NPN		1	BLACK INK TANK BCI-3eBK	CONSUMABLES
	NPN		1	BLACK INK TANK BCI-6BK	CONSUMABLES
	NPN		1	CYAN INK TANK BCI-6C	CONSUMABLES
	NPN		1	MAGENTA INK TANK BCI-6M	CONSUMABLES
	NPN		1	YELLOW INK TANK BCI-6Y	CONSUMABLES
2	Q70-4380-000		1	DUPLEX PRINTING UNIT	
3	NPN		1	PAPER FEED CASSETTE	

D. SCREWS & WASHERS LIST

FIGURE & KEY NO.	PART NUMBER	R A N K	Q T Y	DESCRIPTION	REMARKS
S - 1	XB2-4300-805			SCREW, M3	
2	XB4-7300-805			SCREW, TP, BH3X8	
3	XB1-2301-205			SCREW, MACHINE, M3X12	
4	XB6-7300-605			SCREW, MACHINE, WASHER HEAD, M3x6	
5	XA9-1258-000			SCREW, TAP, WASHER HEAD, M3X12	
6	XA9-1437-000			SCREW, BIND, M2.6X4(RED)	
7	XB1-2300-405			SCREW, MACH.BH, M3X4	

This page intentionally left blank

E. TOOL

FIGURE 14 TOOL

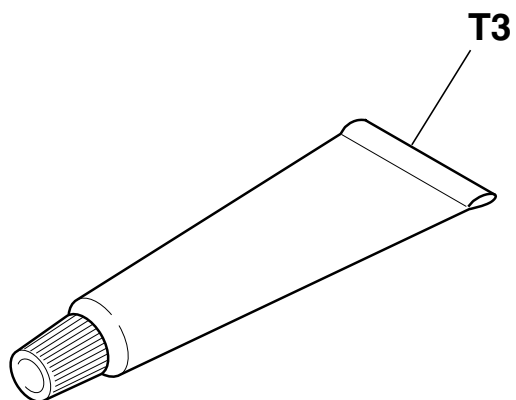
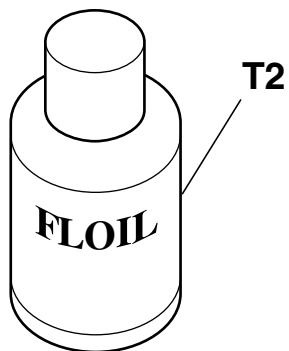


FIGURE & KEY NO.	PART NUMBER	R A N K	Q T Y	DESCRIPTION	REMARKS
T - 1	QY9-0064-000		1	CALIBRATION MEDIA KIT	
2	QY9-0057-000		1	LUBE, FLOIL KG107A, OIL	
3	CK-0562-000		1	GREASE, MOLYKOTE PG-641	

F. NUMERICAL INDEX

PART NUMBER	FIGURE & KEY NO.	DESCRIPTION	PART NUMBER	FIGURE & KEY NO.	DESCRIPTION
CK-0562-000	T - 3	GREASE, MOLYKOTE PG-641	QK1-0233-000	2 - 2	AC ADAPTER: 220V-240V 50/60HZ
Q70-4380-000	13 - 2	DUPLEX PRINTING UNIT	QK1-0247-000	2 - 2	AC ADAPTER: 100V-120V 50/60HZ
QA4-0987-000	9 - 16	PLATE, CARRIAGE SLIDE	QK1-0249-000	2 - 2	AC ADAPTER: 220V-240V 50/60HZ
QA4-0988-000	9 - 17	SPRING, LEAF	QL2-0340-000	10 - 12	LIFT BASE ASS'Y
QA4-0990-000	9 - 2	SPRING, LEAF	QL2-0341-000	11 - 2	PAPER GUIDE FLAPPER ASS'Y
QA4-1053-000	9 - 1	FILM, TIMING SLIT STRIP	QL2-0348-000	1 - 2	CDR TRAY ASS'Y
QA4-1066-000	12 - 2	ABSORBER, INK	QM2-0584-000	3 - 4	UPPER COVER UNIT
QA4-1117-000	1 - 3	TRAY, CD SUB	QM2-0585-000	3 - 3	OPERATION PANEL ASS'Y
QA4-1162-000	12 - 3	GEAR, EJECT	QM2-0586-000	5 - 1	BOTTOM CASE UNIT
QA4-1169-000	11 - 12	FLANGE, PULLEY	QM2-0587-000	7 - 2	OUT PUT TRAY UNIT
QA4-1177-000	10 - 3	RING, LIFT GEAR	QM2-0588-000	3 - 1	PAPER SUPPORT UNIT
QC1-2214-000	3 - 6	COVER, I/F	QM2-0589-000	6 - 2	SHEET FEEDER UNIT
QC1-2230-000	5 - 3	FLAPPER, PAPER FEED CASSETTE	QM2-0593-000	10 - 13	LIFT CAM SHAFT UNIT
QC1-2232-000	7 - 6	ABSORBER, INK	QM2-0596-000	11 - 10	TIMING SENSOR UNIT
QC1-2233-000	7 - 5	ABSORBER, INK	QM2-0597-000	11 - 4	PRESSURE ROLLER ASS'Y
QC1-2234-000	7 - 4	ABSORBER, INK	QM2-0598-000	11 - 1	U-TURN INNER GUIDE ASS'Y
QC1-2235-000	7 - 3	ABSORBER, INK	QM2-0599-000	9 - 12	CARRIAGE UNIT
QC1-2236-000	7 - 7	ABSORBER, INK	QM2-0600-000	8 - 1	PURGE UNIT
QC1-2240-000	7 - 1	COVER, OUT PUT TRAY	QM2-0603-000	1 - 6	PHOTO PAPER TRAY UNIT
QC1-2281-000	9 - 13	SHAFT, CARRIAGE	QM2-0626-000	1 - 1	TRAY GUIDE UNIT
QC1-2284-000	9 - 6	CLIP, SHAFT L	QM2-0627-000	12 - 1	PLATEN UNIT
QC1-2285-000	9 - 3	CLIP, SHAFT R	QM2-0630-000	2 - 1	BSU COVER UNIT
QC1-2286-000	11 - 13	BELT, PAPER FEED	QM2-0631-000	3 - 2	ACCESS COVER ASS'Y
QC1-2287-000	11 - 5	SPRING, TORSION	QM2-0632-000	3 - 2	ACCESS COVER ASS'Y
QC1-2288-000	9 - 8	PLATE, CARRIAGE SHAFT	QM2-0633-000	3 - 2	ACCESS COVER ASS'Y
QC1-2289-000	9 - 4	RING, CARRIAGE SHAFT	QM2-0634-000	12 - 1	PLATEN UNIT
QC1-2290-000	9 - 15	SPRING, CARRIAGE BELT TENSION	QM2-0637-000	11 - 4	PRESSURE ROLLER ASS'Y
QC1-2291-000	11 - 3	SPRING, HOOK END COIL	QM2-0638-000	11 - 8	OPTION GEAR UNIT
QC1-2292-000	11 - 15	BASE, LIFT SENSOR	QM2-0766-000	4 - 1	LOGIC BOARD ASS'Y
QC1-2293-000	10 - 7	GEAR, LIFT INPUT	QM2-0767-000	4 - 1	LOGIC BOARD ASS'Y
QC1-2294-000	10 - 6	GEAR, LIFT TRANSMISSION	QM2-0777-000	5 - 5	DC CONNECTOR ASS'Y
QC1-2295-000	10 - 4	GEAR, LIFT TRANSMISSION	QM2-0792-000	11 - 17	LIFT CAM HARNESS ASS'Y
QC1-2296-000	10 - 5	GEAR, LIFT TRANSMISSION	QM2-0795-000	9 - 10	CARRIAGE MOTOR HARNESS ASS'Y
QC1-2297-000	10 - 1	GEAR, LIFT SHAFT	QM2-0810-000	11 - 9	PAPER FEED MOTOR UNIT
QC1-2298-000	10 - 2	GEAR, CARRIAGE INPUT	QM2-1154-000	5 - 2	PANEL HARNESS ASS'Y
QC1-2299-000	9 - 5	CAM, CARRIAGE SHAFT R	QY6-0049-000	1 - 5	PRINT HEAD
QC1-2300-000	9 - 11	CAM, CARRIAGE SHAFT L	QY9-0057-000	T - 2	LUBE, FLOIL KG107A, OIL
QC1-2301-000	10 - 8	BUSHING	QY9-0064-000	T - 1	CALIBRATION MEDIA KIT
QC1-2302-000	10 - 11	LOCK, LIFT SHAFT	WG8-5571-000	11 - 16	PHOTO INTERRUPTER: TLP1243(C8)
QC1-2303-000	10 - 10	SPRING, HOOK END COIL	WT3-5156-000	1 - 4	CORD, POWER
QC1-2304-000	10 - 9	SHAFT, LIFT INPUT GEAR	WT3-5160-000	1 - 4	CORD, POWER
QC1-2305-000	11 - 6	ARM, PAPER SENSOR	WT3-5182-000	1 - 4	CORD, POWER
QC1-2306-000	11 - 7	SPRING, TORSION	XA9-1258-000	S - 5	SCREW, TAP, WASHER HEAD, M3X12
QC1-2308-000	11 - 14	STATIC ELIMINATOR	XA9-1437-000	S - 6	SCREW, BIND, M2.6X4(RED)
QC1-2491-000	6 - 1	GUIDE, HARNESS	XB1-2300-405	S - 7	SCREW, MACH.BH, M3X4
QC1-2507-000	3 - 5	SHEET, MIST	XB1-2301-205	S - 3	SCREW, MACHINE, M3X12
QC1-2509-000	5 - 4	SPONGE, MIST	XB2-4300-805	S - 1	SCREW, M3
QC1-2510-000	9 - 7	CLIP, CARRIAGE SHAFT	XB4-7300-805	S - 2	SCREW, TP, BH3X8
QC1-2511-000	11 - 11	FILM, TIMING SLIT DISK	XB6-7300-605	S - 4	SCREW, MACHINE, WASHER HEAD, M3x6
QC1-2528-000	11 - 18	PAD			
QF4-0153-000	9 - 14	IDLER ROLLER ASS'Y			
QF4-0155-000	12 - 4	FEED ROLLER ASS'Y			
QH2-2724-000	1 - 4	CORD, POWER			
QH2-2725-000	1 - 4	CORD, POWER			
QH2-2726-000	1 - 4	CORD, POWER			
QH2-2727-000	1 - 4	CORD, POWER			
QK1-0175-000	9 - 9	MOTOR, CARRIAGE			
QK1-0232-000	2 - 2	AC ADAPTER: 100V-120V 50/60HZ			

Canon