

# EPSON

## STYLUS PRO 10600

Spares Guide Version 3 – showing added carriage parts and special service tools

Includes supplement for:

C844071

Optional Stand



Page No.:1

REF.	PART NO	DESCRIPTION	SPECIFICATION	QTY
101	1053493	RUBBER FOOT		2
102	2047847	VACUUM FAN ASSY		3
103	2047848	VACUUM FAN 1 CABLE ASSY		1
104	2047849	VACUUM FAN 2 CABLE ASSY		1
105	2047853	P REAR SENSOR ASSY		1
106	1063147	SENSOR BASE PAPER		1
107	1063162	PAPER GUIDE UPPER		1
108	2047850	VACUUM FAN 3 CABLE ASSY		1
109	1231317	HANDLE		2
110	1231318	HANDLE 2		5
111	1063154	SUB PLATEN		5
112	1063161	PAPER GUIDE LEFT		1
113	1054277	PAPER GUIDE TRAY		3
114	1059697	PAPER GUIDE		3
115	1236173	POROUS PAD STOPPER		1
116	1058991	POROUS PAD,INK EJECT		51
117	1063163	WASTE INK TANK		1
118	1063145	EDGE SADDLE		1
119	1063148	GROMMET		2
120	1063146	WIRE LOCK SADDLE		4
121	1071263	AIR SHIELD B		4
122	1071276	L/H COVER STOPPER		1
123	1090893	PAPER GUIDE LEFT ASSY.		2
124	1090894	PAPER GUIDE M ASSY.		2
151	2047851	PAPER FEED MOTOR ASSY		1
152	1063159	ROLL SUPPORT LEFT ASSY		2
153	1063160	ROLL SUPPORT RIGHT ASSY		2
154	1113631	PAPER FEED BELT		1
155	2047852	PAPER FEED MOTOR CABLE ASSY		1
156	1063172	ONE TOUCH BUSH		2
157	1063149	TAPE(PF-SCALE)		1
158	1060843	SCALE,PF		1
159	1063150	PF-SCALE SUB BOARD		1
160	1063139	ROLLER DAMPER LEFT ASSY		1
161	1063140	ROLLER DAMPER RIGHT ASSY		1
162	1063151	SLIT GUIDE		1
163	1063143	LEVER LOCK SPRING		1
164	1063142	HEAD LOCK SOLENOID		1
165	2047846	LL,SOLENOID JUNCTION CABLE		1
166	1063165	WASTE INK TUBE 1		1
167	1063166	WASTE INK TUBE 2		1
168	2047855	MIST FAN CABLE ASSY		1
169	1063144	POST HEAD ASSY		2
170	1083489	BOX ASSY.,FLUSHING;C		1
171	2035504	BOARD ASSY.,ENCODER		1
172	2047854	PF ENC CABLE ASSY		1
173	1063170	CABLE CLAMP		2
174	1071272	GROMMET		1
175	1063169	FCC CLIP		3
176	1071250	FG CLAMP		3

# EPSON

## STYLUS PRO 10600

Spares Guide Version 3 – showing added carriage parts and special service tools

Includes supplement for:

C844071

Optional Stand



Page No.:2

REF.	PART NO	DESCRIPTION	SPECIFICATION	QTY
177	2049619	SHUTTER MOTOR ASSY		1
178	1071264	LEVER LOCK		1
181	1062373	LOGO PLATE 13X54		1
182	1214735	LABEL,MODEL NAME		1
184	1063520	LABEL,PAPER LEVER SET UP;B		1
185	1213254	LABEL,HAND POSITION		2
186	1063446	LABEL,INK COLOUR		1
187	1213250	LABEL,PAPER JAM/CUTTER CHANGE		1
188	1213246	LABEL,ROLL PAPER SET		1
189	1213248	LABEL,BOARD PAPER SET		1
190	1213244	LABEL,CUT PAPER SET		1
191	1063708	LABEL,CUT POSITION		1
192	1213257	LABEL,CAUTION,STEEL BELT		1
193	1213256	LABEL,CAUTION,CUTTER		1
194	1213251	LABEL,CUTTER CHANGE2		1
195	1213258	LABEL,ROLL PAPER SET 2 INCH		1
196	1059886	LABEL,HIGH TENSION SPINDLE;C		1
197	1213259	LABEL,ROLL PAPER SET 3 INCH		1
200	2036956	BOARD ASSY., MAIN	5692A,STANDARD	1
IC5	2036146	EEP-ROM(BLANK)	SOP,2KBIT,10M/SEC,8	1
IC9	2048570	FLASH ROM	TSOP,,70N/SEC,48	1
250	2077149	BOARD ASSY.,DRIVER	5812B,C362,C499	1
300	2047869	POWER SUPPLY BOARD ASSY		1
301	F086030	PRINT HEAD SET	1080	1
302	1063216	CUTTER SOLENOID ASSY		1
303	2047885	PAPER EDGE SENSOR ASSY		1
304	1030787	COMPRESSION SPRING,9.9		1
305	1063203	HEAD ADJUSTOR BOARD A		1
306	1063202	HEAD ADJUSTOR BOARD B		1
307	1063201	ECCENTRIC SHAFT GEAR		2
308	1063204	HEAD ADJUSTER SPRING		2
309	1063205	SCREW CAP		2
310	2047864	FG CABLE		1
311	1063206	HEAD STOPPER		2
312	2047884	CARRIAGE ENC ASSY		1
313	1063217	CUTTER HOLDER		1
314	1063220	SOLENOID SPRING		1
315	1063219	CUTTER SOLENOID		1
316	1063222	CUTTER SPRING		1
317	1063218	CUTTER CAP		1
318	1063196	PG ADJUSTOR LEVER LEFT		1
319	1063197	PAPER GUIDE CAM SHAFT SPACER		2
320	1063198	SLIDE ECCENTRIC CAM		2
321	1063199	PAPER GUIDE ADJUSTER LEVER RIGHT		1
322	1063200	PG DRIVEN GEAR		1
323	2047886	FG CABLE		1
326	1277733	CARRIAGE ASSY	ADDED PART	1
350	2056362	BOARD ASST INTERFACE	ADDED PART	
351	1063193	PRESS LEVER SHAFT		1
352	1063190	PRESS LEVER GEAR		1

# EPSON

## STYLUS PRO 10600

Spares Guide Version 3 – showing added carriage parts and special service tools

Includes supplement for:

C844071

Optional Stand



Page No.:3

REF.	PART NO	DESCRIPTION	SPECIFICATION	QTY
353	1063192	PRESS LEVER		1
354	1063191	PRESS LEVER SPRING		1
355	2047865	CARRIAGE MOTOR ASSY		1
356	1063186	CARRIAGE DRIVEN PULLEY ASSY		1
357	1063187	STOPPER RUBBER		1
358	1063188	TIMING FENCE SPRING		1
359	2047883	PRESS LEVER SENSOR CABLE ASSY		1
360	2047881	CARRIAGE ORIGIN SENSOR CABLE ASSY		1
361	2047882	PAPER THICKNESS SENSOR CABLE ASSY		1
362	2047866	CARRIAGE MOTOR CABLE ASSY		1
363	1063194	DETECTOR ARM ASSY		1
364	1063195	STEEL BELT ASSY		1
365	2047868	PHOTO SENSOR		3
366	1071261	FERRITE CLAMP		1
367	1060844	SCALE,CR		1
368	1038961	ROLLER,DRIVEN;D		128
369	1063146	WIRE LOCK SADDLE		2
370	1269576	BEARING RETAINING RING	ADDED PART	1
371	127732	PINCH ROLLER ASSY	ADDED PART	1
401	2047871	PAPER FRONT SENSOR ASSY		1
402	1063174	SHUTTER GEAR 1		1
403	1063175	SHUTTER GEAR 2		1
404	1063176	SHUTTER GEAR 3		1
405	1063178	SHUTTER SPRING		10
406	1063177	SHUTTER CAM		11
407	1063173	SHUTTER		5
408	2047872	SHUTTER SENSOR CABLE ASSY		1
409	1063179	AIR SEAL D		1
410	1063180	AIR SEAL E		4
411	1063168	POST HEADER ASSY		1
412	2047861	P FRONT JUNCTION CABLE		1
413	1063145	EDGE SADDLE		1
414	2047868	PHOTO SENSOR		1
451	1063171	SLIDE MOTOR BOARD ASSY		1
452	1058924	PUMP ASSY.,SUPPLY		1
453	1063172	ONE TOUCH BUSH		2
454	1083491	DETECTOR ASSY.,DOT;ASP		1
455	1212548	PUMP CAP UNIT ASSY.:C		1
456	2047870	SLIDE SENSOR ASSY		1
457	2047863	FG CABLE		1
501	1063182	INK CART. BOARD SPRING		6
502	1063183	INK CART. LEVER KNOB		6
503	2047873	I/H COVER SWITCH ASSY		1
504	2036775	BOARD ASSY.,CSIC		1
505	2047880	CSIC FLAT FLEXIBLE CABLE		1
506	2047874	BLACK CART. FLAT FLEXIBLE CABLE		1
507	2047875	CYAN CART. FLAT FLEXIBLE CABLE		1
508	2047876	MAGENTA CART. FLAT FLEXIBLE CABLE		1
509	2047877	LIGHT.CYAN CART. FLAT FLEXIBLE CABLE		1
510	2047878	LIGHT.MAGENTA CART. FLAT FLEXIBLE CABLE		1

# EPSON

## STYLUS PRO 10600

Spares Guide Version 3 – showing added carriage parts and special service tools

Includes supplement for:

C844071

Optional Stand



Page No.:4

REF.	PART NO	DESCRIPTION	SPECIFICATION	QTY
511	2047879	YELLOW CART. FLAT FLEXIBLE CABLE		1
512	1213139	HOLDER ASSY.,INK CART.;BLACK		6
513	1063181	MINI LATCH		2
514	1063184	CKS CLAMP		2
515	1058973	TUBE,INK CART		6
516	1071260	FLAT CORE		1
517	1071258	FERRITE CLAMP		2
518	1071253	FG CLAMP		3
519	1071256	FERRITE CLAMP		1
520	1063146	WIRE LOCK SADDLE		5
521	1033482	JOINT SCREWS,M6		12
522	1033483	O RING,TUBE FASTEN		12
523	1213137	JOINT,M6		6
531	1271113	POROUS PAD FRAME	ADDED PART	1
601	1058967	TUBE,SUPPLY,INK,BLACK		1
602	1058968	TUBE,SUPPLY,INK,CYAN		1
603	1058972	TUBE,SUPPLY,INK,LIGHT.CYAN		1
604	1058970	TUBE,SUPPLY,INK,LIGHT.MAGENTA		1
605	1058969	TUBE,SUPPLY,INK,MAGENTA		1
606	1058971	TUBE,SUPPLY,INK,YELLOW		1
607	2047887	CARRIAGE FLAT FLEXIBLE CABLE 1		3
608	1063208	TUBE FILM		1
609	1063207	SUS SUPPORT		1
610	2047888	CARRIAGE FLAT FLEXIBLE CABLE 2		3
611	1033482	JOINT SCREWS,M6		24
612	1033483	O RING,TUBE FASTEN		24
613	1213137	JOINT,M6		6
614	1063210	FILM,FLAT FLEXIBLE CABLE,STOPPER		6
615	1063209	FILM,TUBE,STOPPER		8
616	1063213	CABLE STOPPER		1
617	1063211	TUBE PROTECTION		1
618	1063215	TUBE,PIPE STOPPER		1
619	1063156	OUTLET ROLLER BOARD ASSY		6
620	1063157	TUBE BINDER		2
621	1063155	CABLE GUIDE BOARD		1
701	1011863	GROUNDING PLATE,I/F,UPPER		2
702	2047859	POWER SUPPLY C CABLE ASSY		1
703	2047862	ROLL-UP JUNCTION CABLE		1
704	2073108	FAN ASSY.		2
705	1063240	HJHK FG BOARD SPRING		2
706	2047860	DC CABLE ASSY		1
707	2047857	COOLING FAN 1 CABLE ASSY		1
708	2047858	COOLING FAN 2 CABLE ASSY		1
709	1090895	SILENT DUCT		2
710	1071273	COOLING FAN SEAL		1
711	1060652	SHIELD PLATE,1		1
712	1060653	SHIELD PLATE,2		1
713	2036963	BOARD ASSY.,SUB	5695A,STANDARD	1
714	1063146	WIRE LOCK SADDLE		18
715	1063144	POST HEAD ASSY		2

# EPSON

## STYLUS PRO 10600

Spares Guide Version 3 – showing added carriage parts and special service tools

Includes supplement for:

C844071

Optional Stand



Page No.:5

REF.	PART NO	DESCRIPTION	SPECIFICATION	QTY
716	1063169	FCC CLIP		12
801	1063231	H TOP COVER		1
802	1231314	ROLL SIDE COVER RIGHT		1
803	1063223	STATIC DISCHARGE BRUSH		3
804	1063224	CATCH		3
805	1231313	ROLL SIDE COVER LEFT		1
806	1063232	FRONT COVER		1
807	1063241	L/H COVER ASSY		1
808	1231312	SIDE COVER RIGHT		1
809	1063226	FRONT COVER DAMPER RIGHT		1
810	1063227	FRONT COVER DAMPER LEFT		1
811	1231283	SIDE COVER ASSY.		1
812	1063238	CARRIAGE COVER		1
813	1063230	L/H COVER GEAR LEFT-ASSY		1
814	1063239	L/H COVER GEAR RIGHT-ASSY		1
815	1231315	RIGHT INSIDE COVER		1
816	1063228	FRONT COVER CAM		2
817	2047890	COVER SENSOR RIGHT ASSY		1
818	2047889	COVER SENSOR LEFT ASSY		1
819	2047891	PANEL FCC		1
820	1231316	PRESS LEVER		1
821	1063225	MINI CLAMP		2
822	2080496	PANEL ASSY.		1
823	1071249	ROLL TOP COVER		1
824	2049623	SENSOR COVER RIGHT ASSY		1
825	2049624	SENSOR COVER LEFT ASSY		1
901	1053559	FLANGE (2 INCH RIGHT)		2
902	1053560	FLANGE (2 INCH)		2
903	1108515	STOPPER SHAFT		2
904	1074104	RETAINING RING(B150300611)	TYPE-E(3)	4
905	1108518	2 INCH ROLL FEED SPINDLE (NORMAL)		1
906	1053561	FLANGE (3 INCH RIGHT)		1
907	1108516	3 INCH ROLL FEED SPINDLE(H/T)		1
908	1104617	3 INCH ROLL STOPPER		1
909	1053562	FLANGE (3 INCH LEFT)		1
N/A	1055028	ROLLER BAND	FOR PAPER ROLLS	2
N/A	1277613	'VELCRO' STRAP	FOR PAPER ROLLS	2
N/A	1155881	INK CART BOXED PHOTO BLACK 'ULTRACHROME' 500ml	OPTIONAL BLACK **	1
N/A	1155882	INK CART BOXED CYAN 'ULTRACHROME' 500ml		1
N/A	1155883	INK CART BOXED MAGENTA 'ULTRACHROME' 500ml		1
N/A	1155884	INK CART BOXED YELLOW 'ULTRACHROME' 500ml		1
N/A	1155885	INK CART BOXED LT.CYAN 'ULTRACHROME' 500ml		1
N/A	1155886	INK CART BOXED LT..MAGENTA 'ULTRACHROME' 500ml		1
N/A	1155887	INK CART BOXED MATT BLACK 'ULTRACHROME' 500ml	OPTIONAL BLACK **	1
N/A	1060627	DISCHARGE CARTRIDGE,UNBOXED		1
N/A	1155755	DRAINING CARTRIDGE		1
N/A	1214261	CLEANING CARTRIDGE,4CB33C		1
N/A	1235340	WASTE INK TANK REMOVAL TOOL	#F825	1
N/A	1235342	INK TUBE REMOVAL ATTACHMENT	#F827	1
N/A	1235344	FEED ADJUSTMENT GAUGE	#F829	1

# EPSON

## STYLUS PRO 10600

Spares Guide Version 3 – showing added carriage parts and special service tools

Includes supplement for:

C844071

Optional Stand



Page No.:6

REF.	PART NO	DESCRIPTION	SPECIFICATION	QTY
N/A	1060627	DISCHARGE CART. UNBOXED		1
N/A	1070167	MC CARD		1
N/A	1155755	DRAINING CARTRIDGE		1
N/A	1214261	CLEANING CARTRIDGE,4CB33C		1
N/A	1235340	WASTE INK TANK REMOVAL TOOL	#F825	1
N/A	1235341	PRINT HEAD INSTALLATION GUIDE	#F826	1
N/A	1235342	INK TUBE REMOVAL ATTACHMENT	#F827	1
N/A	1235343	BOARD INSTALLATION GUIDE	#F828	1
N/A	1235344	FEED ADJUSTMENT GAUDE	#F829	1
N/A	1277073	PRESS ASSY POSITION TOOL		1
N/A	1277142	TORQUE WRENCH 1.25/1.75		1
N/A	1277143	CABLE SUPPORT		1
N/A	1277144	FFC INSTALLATION GUIDE		1
		END OF STYLUS PRO 10600		

\*\* PHOTO BLACK AND MATT BLACK CANNOT BE USED TOGETHER: USE PHOTO BLACK OR MATT BLACK

		OPTIONAL STAND – C844071		
911	1231333	PAPER OUT TRAY ASSY.		1
912	1071286	CASTOR(BRAKED)		2
913	1071287	CASTOR(UNBRAKED)		2
915	1231325	BASE UPRIGHT RIGHT		1
916	1231332	SCREW PACK		1
917	1231327	BASE UPRIGHT LEFT		1
918	1231329	CROSS-MEMBER		1
919	1231330	HOOKS LONG (PAIR)		1
920	1231331	HOOKS SHORT (PAIR)		1
921	1113928	SUPPORT ASSY.		1
922	1231334	BRACKET 1		2
923	1231335	BRACKET 2		2
924	1231336	BRACKET RIGHT		1
925	1231337	BRACKET LEFT		1
926	1213255	LABEL,		1
END				

# EPSON

## STYLUS PRO 10600

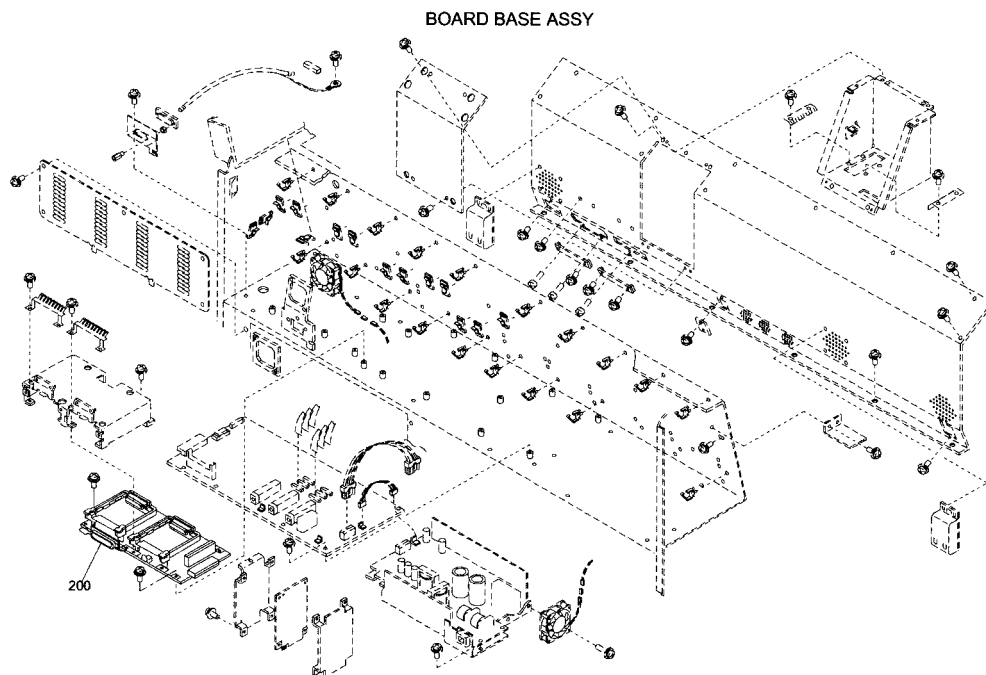
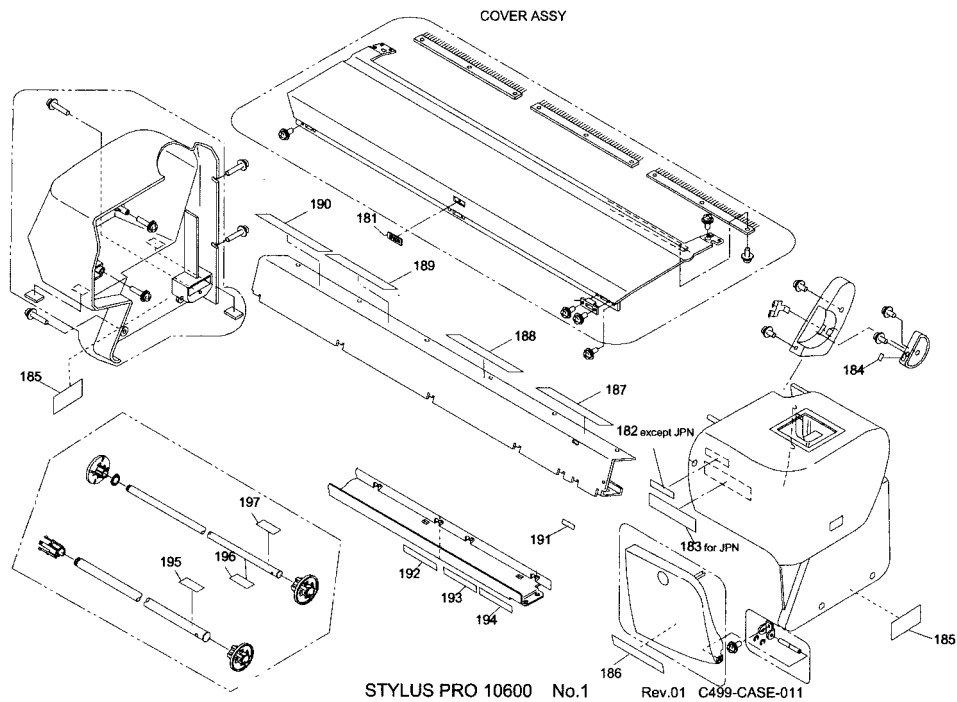
*Spares Guide Version 3 – showing added carriage parts and special service tools*

*Includes supplement for:*

**C844071**

*Optional Stand*

*Page No.:7*



# EPSON

## STYLUS PRO 10600

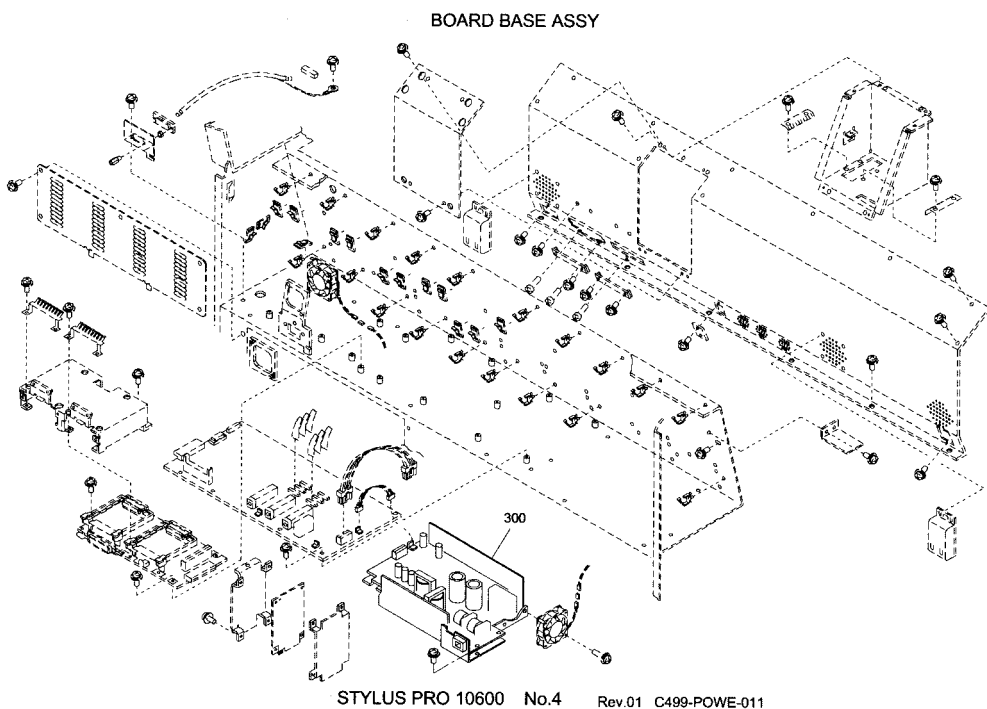
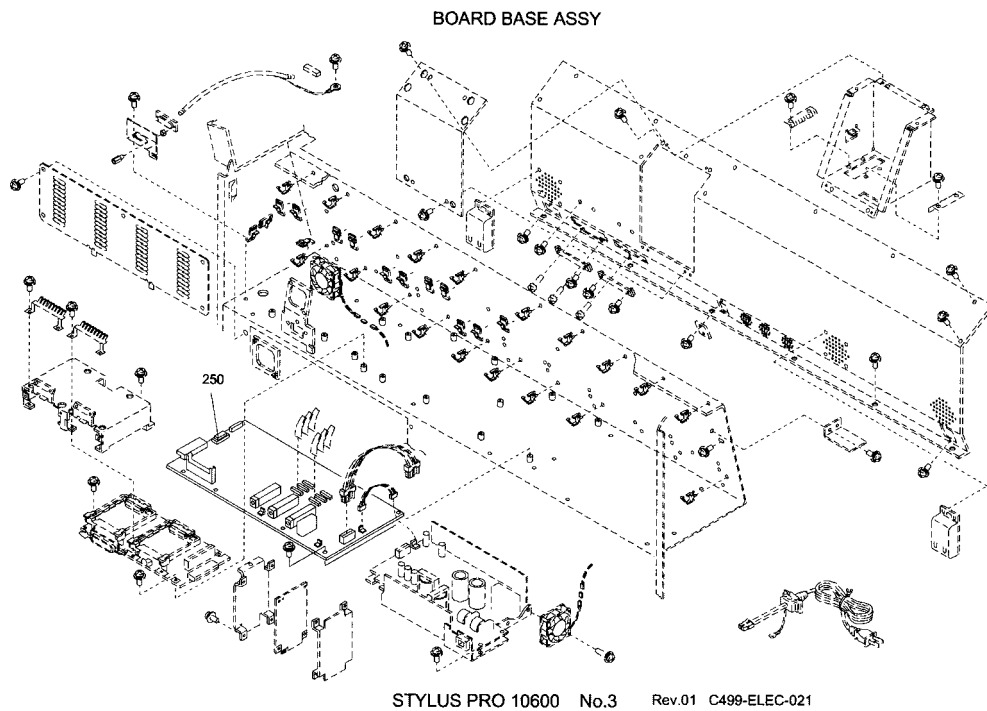
*Spares Guide Version 3 – showing added carriage parts and special service tools*

*Includes supplement for:*

**C844071**

*Optional Stand*

*Page No.:8*



# EPSON

## STYLUS PRO 10600

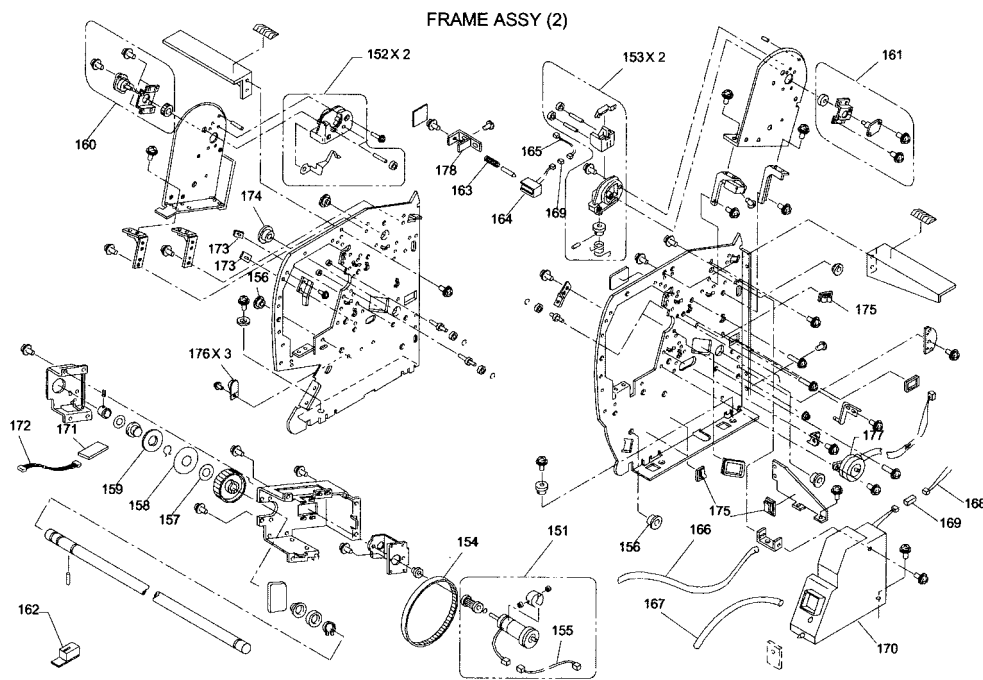
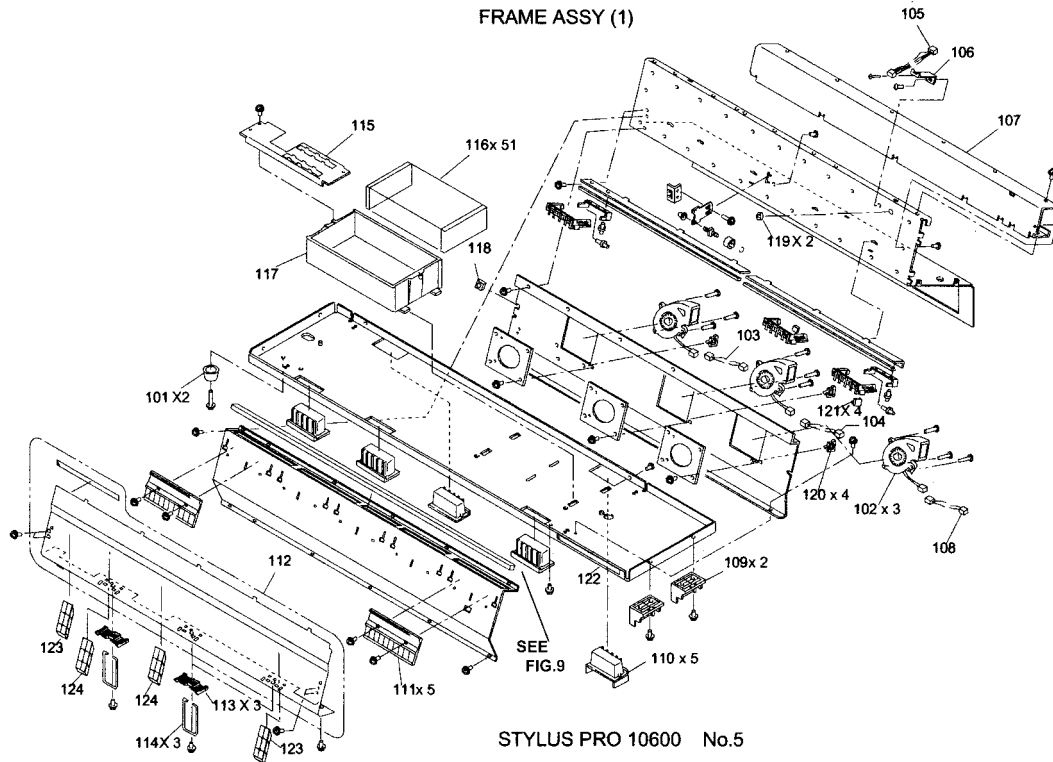
Spares Guide Version 3 – showing added carriage parts and special service tools

Includes supplement for:

C844071

Optional Stand

Page No.:9



Rev.01 C499-MECH-021

# EPSON

## STYLUS PRO 10600

Spares Guide Version 3 – showing added carriage parts and special service tools

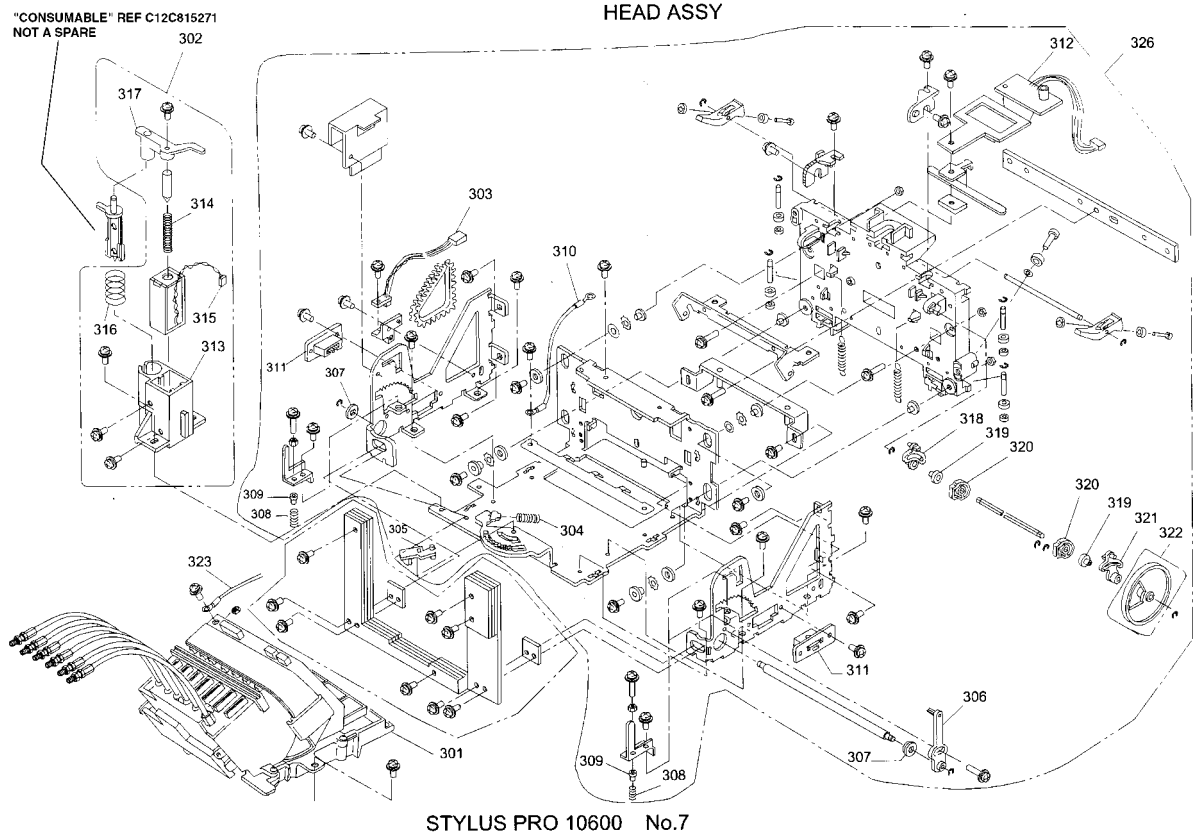
Includes supplement for:

C844071

Optional Stand

**TONER**  
www.tonerplus.com.ua

Page No.:10



# EPSON

## STYLUS PRO 10600

*Spares Guide Version 3 – showing added carriage parts and special service tools*

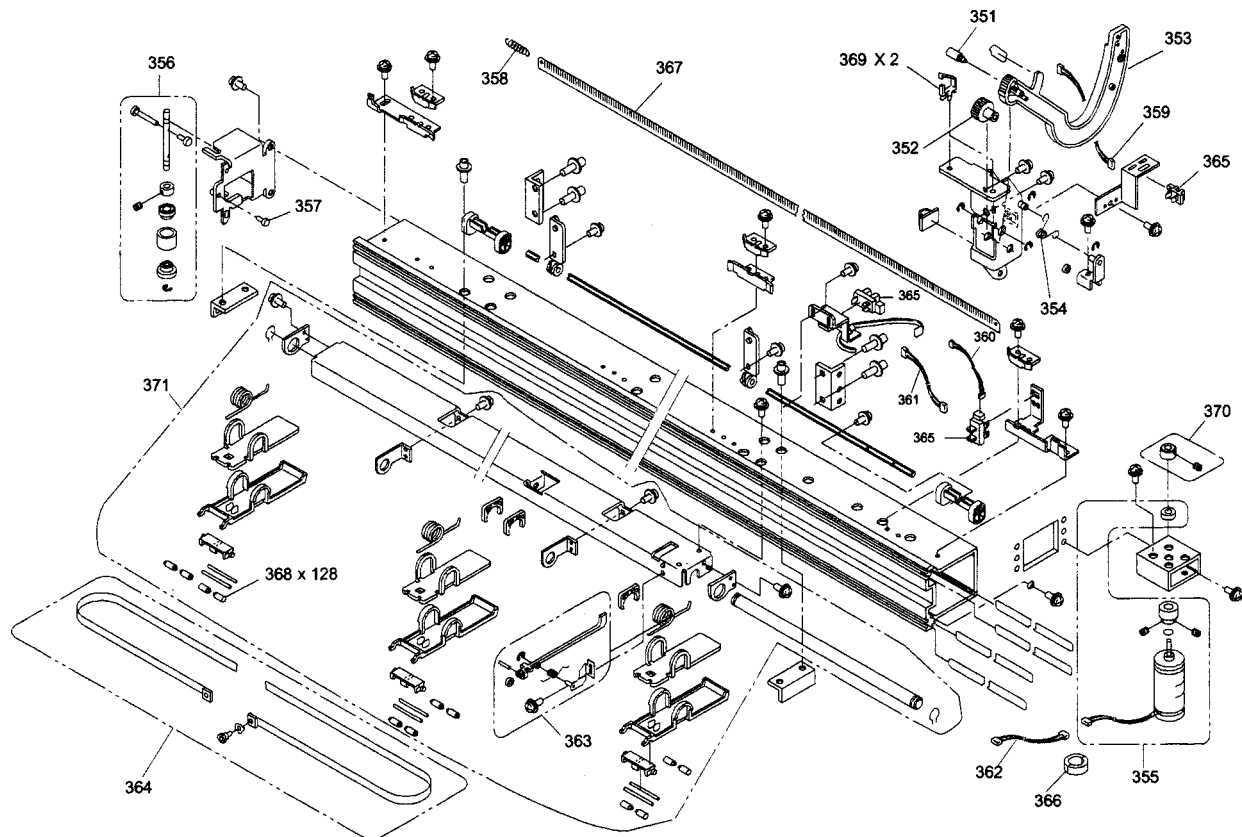
*Includes supplement for:*

**C844071**

*Optional Stand*



**Page No.:11**



STYLUS PRO 10600 No.8

# EPSON

## STYLUS PRO 10600

*Spares Guide Version 3 – showing added carriage parts and special service tools*

*Includes supplement for:*

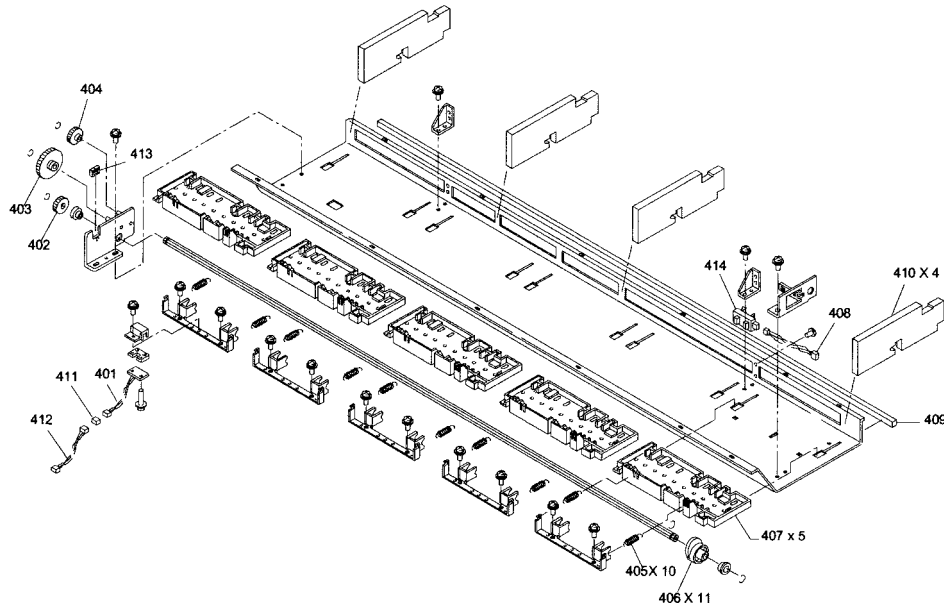
**C844071**

*Optional Stand*



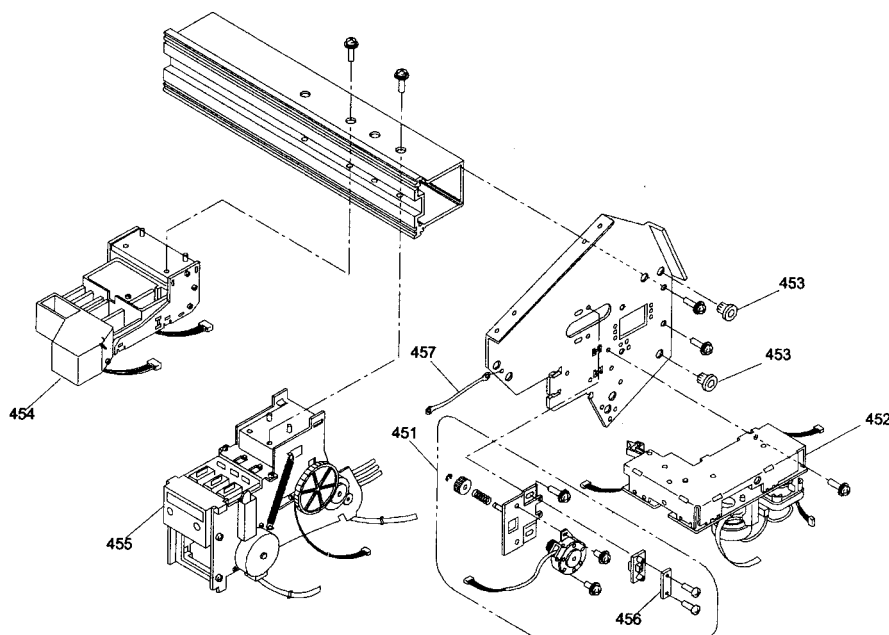
**Page No.:12**

### VACUUM SWITCH ASSY



STYLUS PRO 10600 No.9 Rev.01 C499-MECH-051

### INK SYSTEM ASSY



STYLUS PRO 10600 No.10 Rev.01 C499-MECH-061

# EPSON

## STYLUS PRO 10600

Spares Guide Version 3 – showing added carriage parts and special service tools

Includes supplement for:

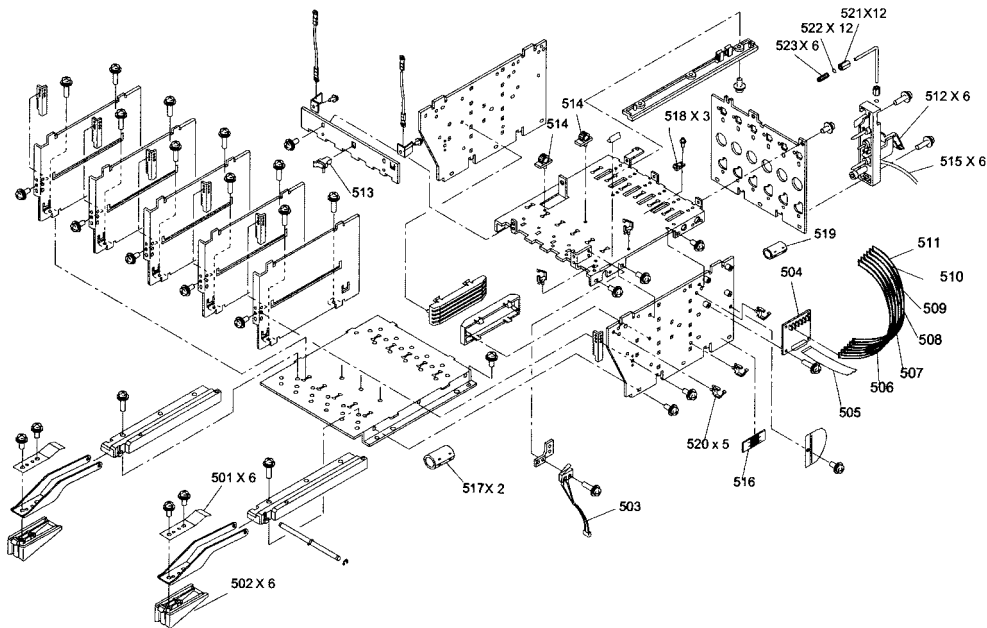
C844071

Optional Stand



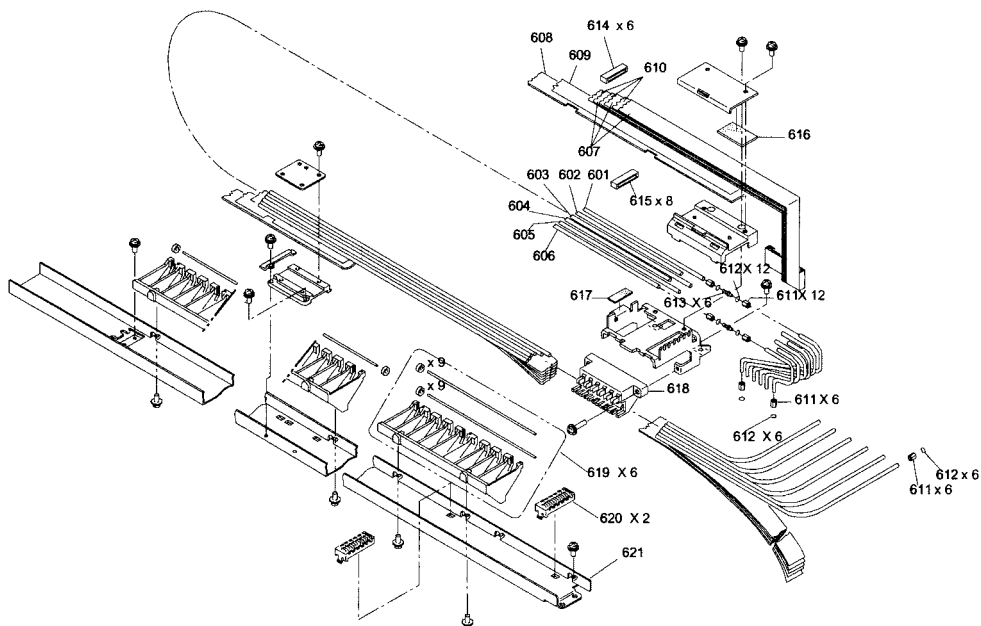
Page No.:13

I / H ASSY



STYLUS PRO 10600 No.11 Rev.01 C499-MECH-071

CABLE GUIDE ASSY



STYLUS PRO 10600 No.12 Rev.01 C499-MECH-081

# EPSON

## STYLUS PRO 10600

*Spares Guide Version 3 – showing added carriage parts and special service tools*

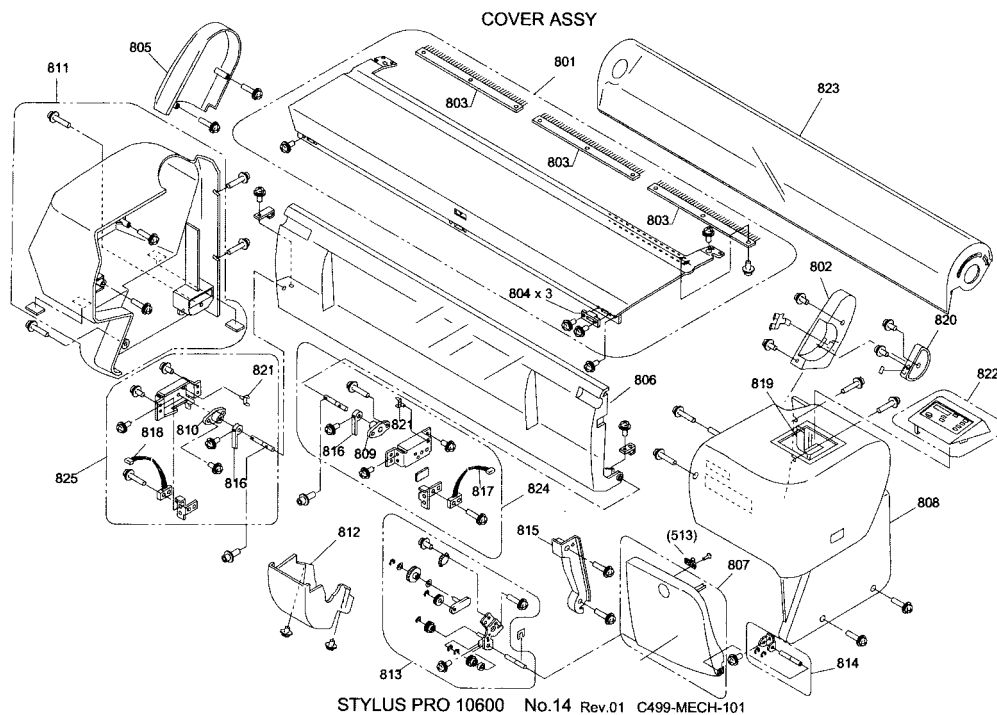
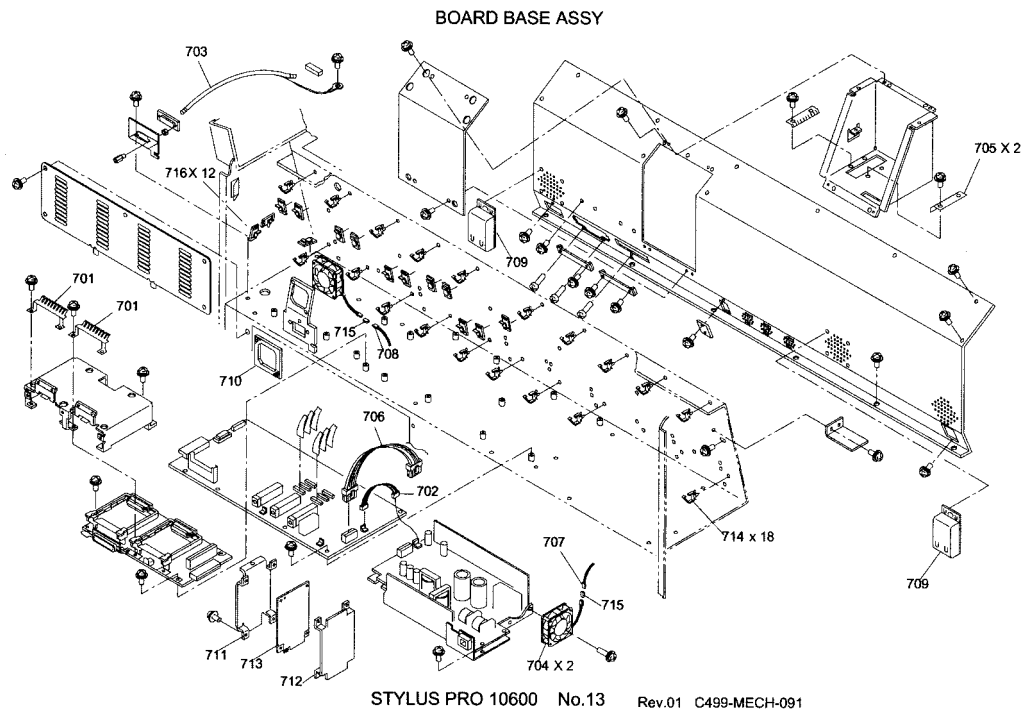
*Includes supplement for:*

**C844071**

*Optional Stand*



**Page No.:14**



# EPSON

## STYLUS PRO 10600

Spares Guide Version 3 – showing added carriage parts and special service tools

Includes supplement for:

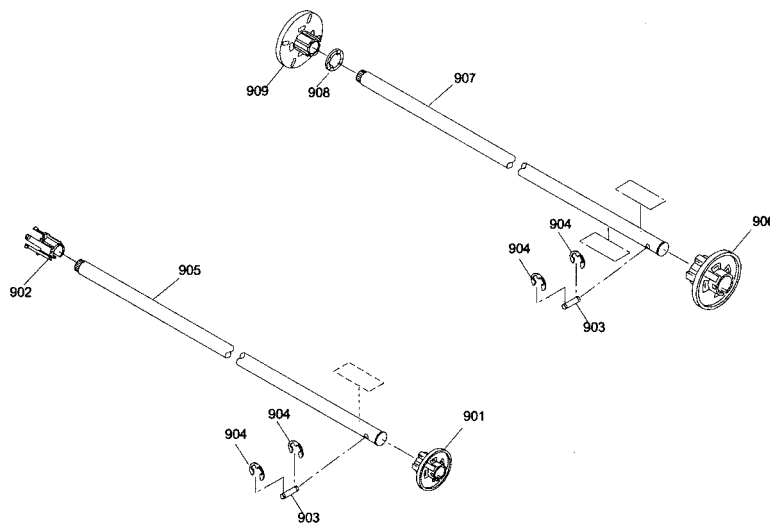
C844071

Optional Stand

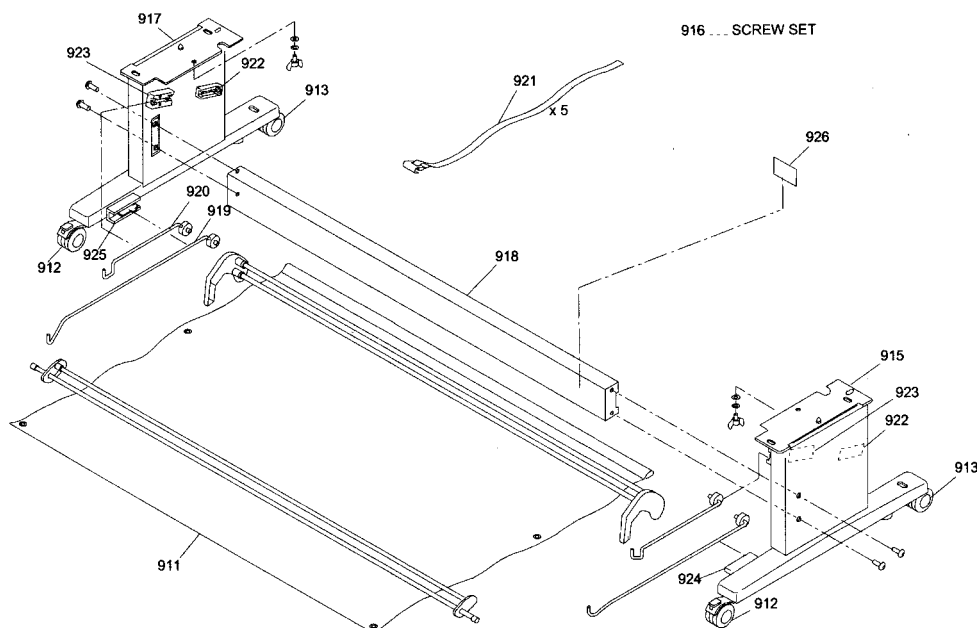


Page No.:15

### SPINDLE ASSY



STYLUS PRO 10600 No.15 Rev.01 C499-MECH-111



STYLUS PRO 10600 OPTION (C344071)