

SB Number:	SB 3J3-001	Creation Date: 28/10/2006
Subject:	MEASURE: staple misalignment, changed parts	
Model:	DF-720, DF-78, DF-410, F-2205	

A film was added as a temporary measure against a staple misalignment problem in the DF-720. A permanent measure has been taken by changing the shape of the Cursor (No.1) by increasing its stability. Due to this change, the new and old Cursor are not compatible with each other. Please keep it in mind when replacing the parts.

Contents of change

- Increased thickness on the sticking surface for the film (No.2) on Cursor (No.1) and the material indication has been changed (These changes only apply to DF-720, DF-78)
Old material indication >ABS< → (New) >ABS< P2H-AT
- Due to the above change, Film (No.2) has been disused (This applies only to DF-720);
- Due to the change mentioned in pt.1, the shape of <Front/rear cursor (No.3, 4) have been changed (No.3 applies only to DF-720 and DF-78).

(*please refer to the drawing on the following page to see which changes have been made.)

No.	Old parts number	New parts number	Description	Q'ty		Interchange ability		Remarks
				Old	New	Old	New	
1	303B507081 3B507081	303B507082 3B507082	CURSOR, LEADING REGISTRATION	1	1	X	X	*1
2	303J336100 3J336100	-----	FILM CURSOR	1	-	X	-	DF-720
3	3B507040	303B507041 3B507041	FRONT CURSOR, SIDE REGISTRATION	1	1	X	O	*1
4	3BN07100	303BN07101 3BN07101	REAR CURSOR, SIDE REGISTRATION	1	1	X	O	*2

1. DF-78, DF-720

2. DF-78, DF-720, F-2205, DF-410

Because F-2205 and DF-410 do not use No.1-3, it will be no problem to use either new or old Rear Cursor (No.4).

Field measure:

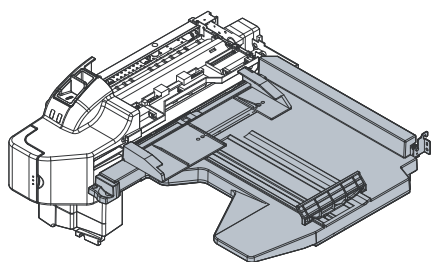
DF-720/DF-78: The old No.1 part should be used in combination with the old No.2-4. The new No.1 should be used together with the new No.3, 4.

F-2205/DF-410: it will be no problem to use either new or old Rear Cursor (No.4)

Affected machine serial numbers:

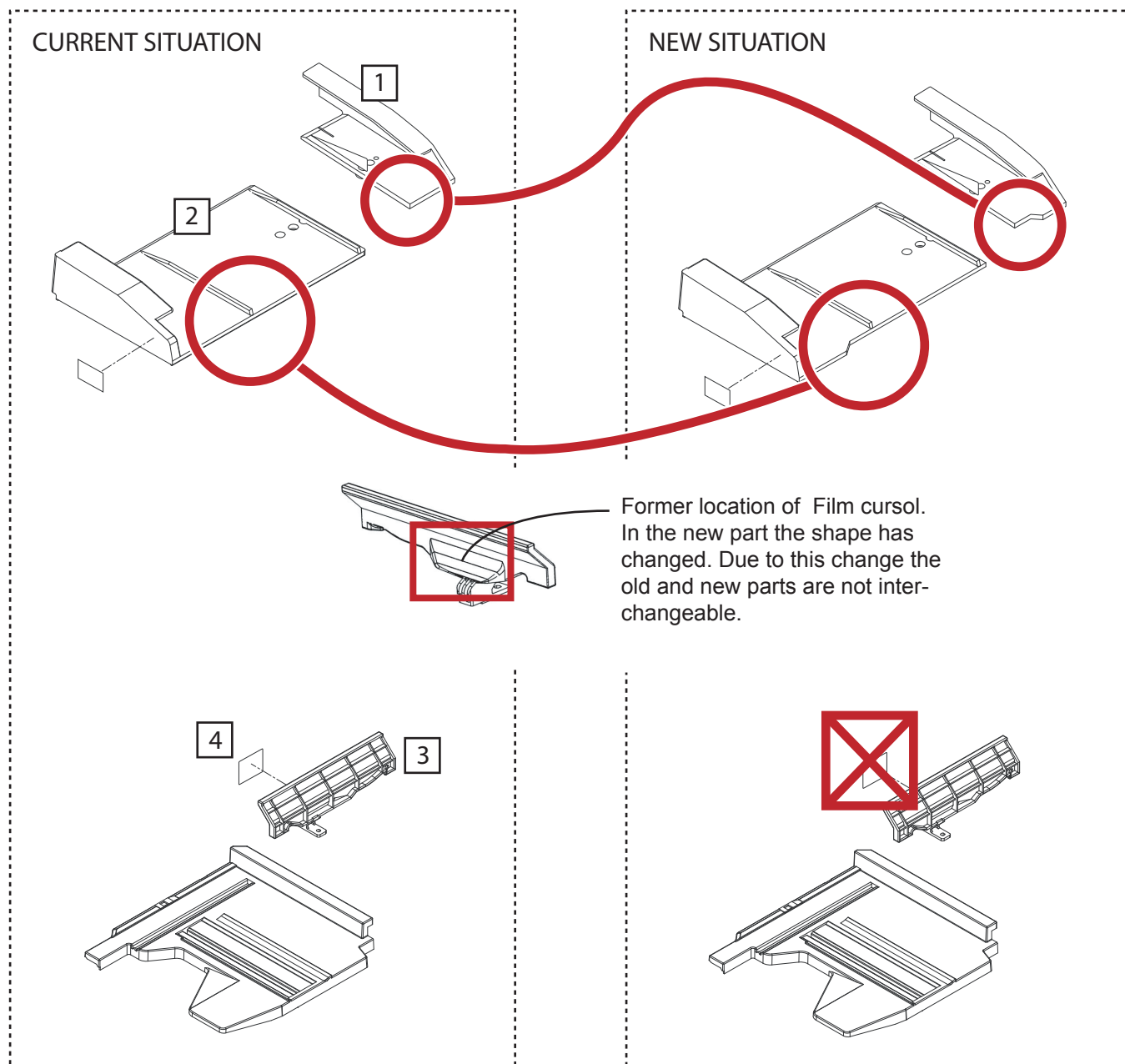
DF-720, DF-78: From the production in August 2006 the machines will be assembled using the new parts.

F-2205, DF-410: After using up the current stock these machines will be assembled using the new parts.



Phenomenon:
Staple misalignment, permanent measure - part shape change.

Affected models:
DF-720 / DF- 78 / DF-410 / F-2205



- 1: Rear cursor, side registration,
- 2: Front cursor, side registration,
- 3: Cursor, leading registration,
- 4: Film cursol,

p/n: 303BN07100 (old)
p/n: 303BN07101 (new)
p/n: 303B507040 (old)
p/n: 303B507041 (new)
p/n: 303B507081 (old)
p/n: 303B507082 (new)
p/n: 303J336100 (old)
DISUSED IN NEW SITUATION