



DP-750 DP-760

PARTS LIST

Published in November 2008

3LLPL071

843LL121

Rev.1

NOTES

1. Indicate parts number and parts description together with the machine model name when placing an order.

e.g.	Parts Number	Parts Name	Machine Model	Quantity
	303LL24170	GUIDE CONVEYING MID	DP-750	1
	303LK24080	GUIDE CONVEYING MID	DP-760	1

2. Symbols in the "Parts Number" column.

- Parts with "•" are component parts or sub-assemblies of the assembly appearing immediately above them.

e.g.	Parts Number	Parts Name	Parts Number	Parts Name
	303LL94030	PARTS MAT ASSY	• 303JC04200	PLATE ORIGINAL
			• 303JX02320	CUSHION ORIGINAL MAT A

- Parts with "⊙" indicate regular maintenance parts.

—— CONTENTS ——

FIG. 1	Covers.....	2
FIG. 2	Frames	4
FIG. 3	Table Assy.....	6
FIG. 4	Paper Conveying Section 1.....	8
FIG. 5	Paper Conveying Section 2.....	10
FIG. 6	Paper Feed Section	12
FIG. 7	Duplex Section	14
FIG. 8	Drive Section & Electrical Components.....	16
FIG. 9	Accessory.....	18
• INDEX		20

FIG. 1 Covers

3LL/3LK

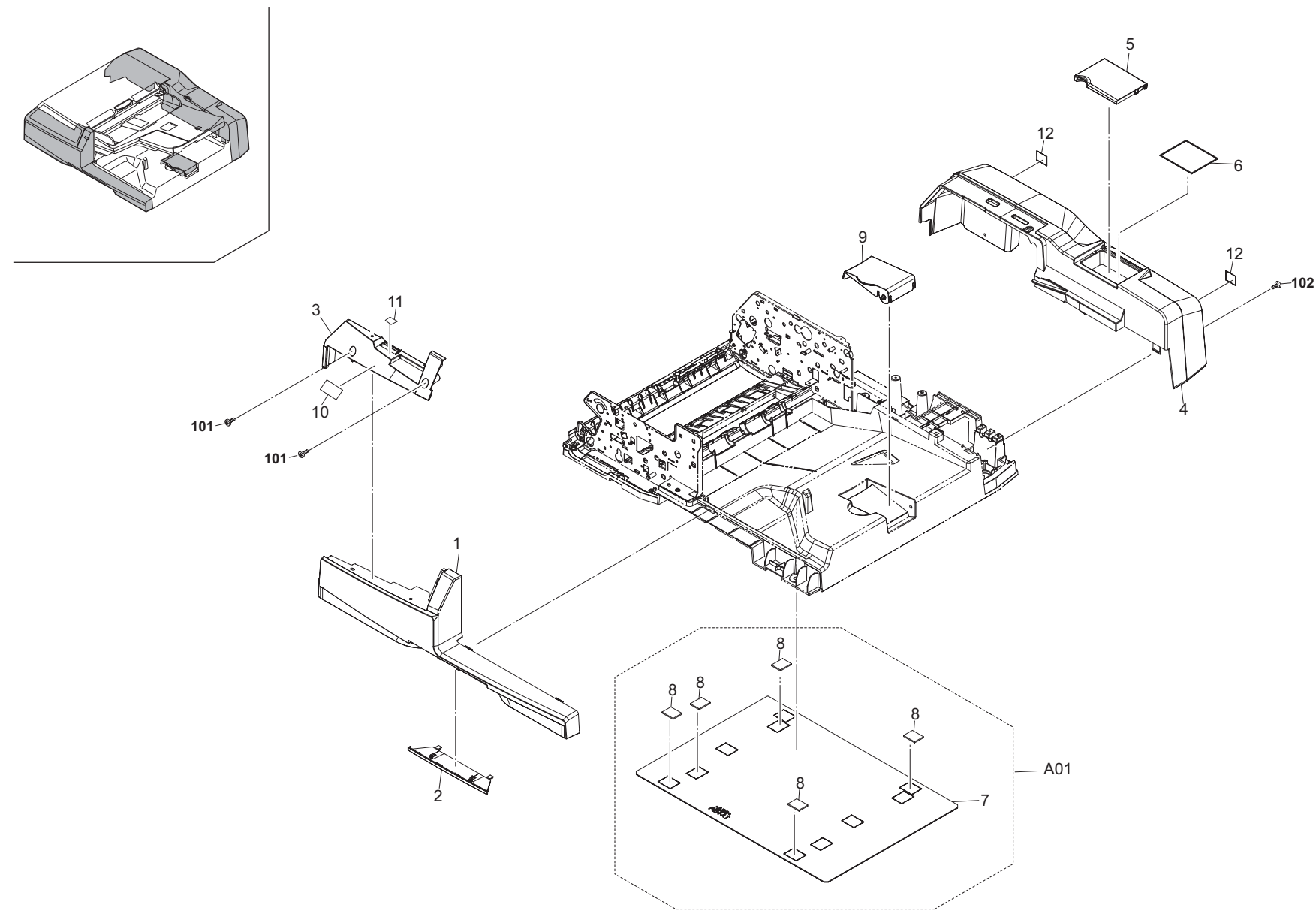


FIG. 1 Covers

3LL/3LK-1

	Ref. No.	Part.No.	Alternative.	Description	Quantity		
					120	230	240
⊙	1	303LL04010	3LL04010	COVER FRONT	1	1	1
⊙	2	303LL04050	3LL04050	HANDLE DP	1	1	1
⊙	3	303LL04080	3LL04080	COVER FRONT B	1	1	1
⊙	4	303LL04020	3LL04020	COVER REAR	1	1	1
⊙	5	303LL04040	3LL04040	LID REAR COVER	1	1	1
⊙	6	303H604090	3H604090	CLOTH CLEANING	1	1	1
⊙	A01	303LL94030	3LL94030	PARTS MAT ASSY	1	1	1
⊙	7	*303JC04200	3JC04200	PLATE ORIGINAL	1	1	1
⊙	8	*303JX02320	3JX02320	CUSHION ORIGINAL MAT A	5	5	5
⊙	9	303LL04060	3LL04060	STOPPER EJECT ORIGINAL	1	1	1
⊙	10	303LL34070	3LL34070	LABEL JAM DIAL	1	1	1
⊙	11	303LL34110	3LL34110	LABEL C	1	1	1
⊙	12	303LL34050	3LL34050	LABEL CAUTION	2	2	2

	Ref. No.	Part.No.	Alternative.	Description	Quantity		
					120	230	240
	101	7BB180306H	BB111190	+BIND T.T S SCREW 3X6(BLACK)			
	102	7BB780308H	BB111200	+BIND T.T S SCREW 3X8 SR(BLACK)			

- Parts with "*" are component parts or sub-assemblies of the assembly appearing immediately above them.
- Parts with "⊙" indicate regular maintenance parts.

FIG. 2 Frames

3LL/3LK-1

	Ref. No.	Part.No.	Alternative.	Description	Quantity		
					120	230	240
⊙	1	303LL02010	3LL02010	BASE DP	1	1	1
	2	303LL04100	3LL04100	COVER BOTTOM RIGHT	1	1	1
	3	3H602250	3H602250	CUSHION RUBBER	1	1	1
	4	5MVX111DN003	2A806250	RING STOPPER /A-49 FEED A4	1	1	1
	5	303LL02410	3LL02410	MOUNT CUSHION	4	4	4
	6	303LL02420	3LL02420	CUSHION ORIGINAL MAT	4	4	4
	7	303LL02280	3LL02280	MOUNT SPONGE B	1	1	1
	8	303LL02430	3LL02430	SPRING PUSH MAT	4	4	4
	9	303J902090	3J902090	SPONGE ORIGINAL MAT A	1	1	1
	10	303J902110	3J902110	CUSHION ORIGINAL MAT	1	1	1
	11	303LL02060	3LL02060	MOUNT SPONGE	1	1	1
	12	303LL04110	3LL04110	COVER BOTTOM REAR	1	1	1
	13	3H608150	3H608150	SHAFT C PULLEY	10	10	10
	14	3HL08080	3HL08080	PULLEY CONVEYING	10	10	10
	15	303LL24110	3LL24110	HOLDER RIGHT PULLEY	5	5	5
	16	303LL24130	3LL24130	SPRING PULLEY CONV R	5	5	5
	17	303LL24210	3LL24210	MOUNT RIGHT PULLEY	1	1	1
	18	303LL24160	3LL24160	GUIDE RIGHT READING	5	5	5
	19	303LL24100	3LL24100	HOLDER LEFT PULLEY	5	5	5
	20	303LL24120	3LL24120	SPRING PULLEY CONV LEFT	5	5	5
	21	303LL46090	3LL46090	WIRE TMGSW	1	1	1
	22	303LL02270	3LL02270	HOLDER WIRE B	1	1	1
	23	303LL02340	3LL02340	STAY BASE	1	1	1
	24	303LL04070	3LL04070	COVER BOTTOM	1	1	1
⊙	25	303LL02230	3LL02230	PLATE SENSOR	1	1	1
	26	2FG27110	2FG27110	SWITCH REGISTRATION	1	1	1
	27	303LL02470	3LL02470	GROUND TIMING SW	1	1	1
	28	303LL02480	3LL02480	SEAL WIRE	3	3	3
	29	303LL02210	3LL02210	COVER SENSOR	1	1	1
	30	303LL02080	3LL02080	SHEET LEFT GUIDE A	1	1	1
	31	303LL02110	3LL02110	TRAY LOOP	1	1	1
	32	303LL24060	3LL24060	STAY CONVEYING LOWER	1	1	1
	33	303LL02050	3LL02050	FRAME REAR	1	1	1
	34	303LL02040	3LL02040	FRAME FRONT	1	1	1
	35	303LL24200	3LL24200	MOUNT READING SW	1	1	1
	36	2C927210	2C927210	SENSOR 248NL1	1	1	1
	37	303LL46080	3LL46080	WIRE OPENSU (Reversed DP)	1	1	1
	37	303LK46070	3LK46070	WIRE OPENSU (Dual Scan DP)	1	1	1
	38	303LL24170	3LL24170	GUIDE CONVEYING MID (Reversed DP)	1	1	1
	39	303LK24080	3LK24080	GUIDE CONVEYING MID (Dual Scan DP)	1	1	1
	40	302FZ03070	2FZ03070	RETAINING PIN DRAWER	1	1	1
	41	303LL46070	3LL46070	WIRE SOLENOID (Reversed DP)	1	1	1
	42	303LK46060	3LK46060	WIRE SOLENOID (Dual Scan DP)	1	1	1
	43	7YZM390011++H01	YZ050250	ACCESS.CLAMP	1	1	1
	44	303K502070	3K502070	SEAL WIRE	1	1	1
	45	303K502070	3K502070	SEAL WIRE (Dual Scan DP)	7	7	7
	46	303LK02030	3LK02030	HINGE RIGHT	1	1	1
	47	303LL02020	3LL02020	HINGE LEFT (Reversed DP)	1	1	1
	47	303LK02020	3LK02020	HINGE LEFT (Dual Scan DP)	1	1	1
	48	303LL02520	3LL02520	GROUND PLATE HINGE	2	2	2

	Ref. No.	Part.No.	Alternative.	Description	Quantity		
					120	230	240
	49	303LL02390	3LL02390	PUSH SW	1	1	1
	50	303JX02090	3JX02090	SPRING PUSH SW	1	1	1
	51	303LL02150	3LL02150	HOLDER SPRING PUSH SW	1	1	1
	52	303LL02260	3LL02260	STAY FRAME REAR	1	1	1
	53	303LL02370	3LL02370	PLATE SCREW	3	3	3
	54	303LL24260	3LL24260	GROUND MOUNT R PULLEY	1	1	1
	55	303LL02510	3LL02510	SHEET BASE	1	1	1
	101	7BB200308H	BB105660	+BIND T.T P SCREW 3X8			
	102	7BB780308H	BB111200	+BIND T.T S SCREW 3X8 SR(BLACK)			
	103	7BB700314H	BB105610	+BIND T.T S SCREW 3X14 SR			
	104	7BB700308H	BB105600	+BIND T.T S SCREW 3X8 SR			
	105	7BB200410H	BB105700	+BIND T.T P SCREW 4X10			
	106	7BB100306H1	BB105820	+BIND T.T S SCREW 3X6			

- Parts with "*" are component parts or sub-assemblies of the assembly appearing immediately above them.
- Parts with "⊙" indicate regular maintenance parts.

FIG. 3 TableAssy

3LL/3LK-1

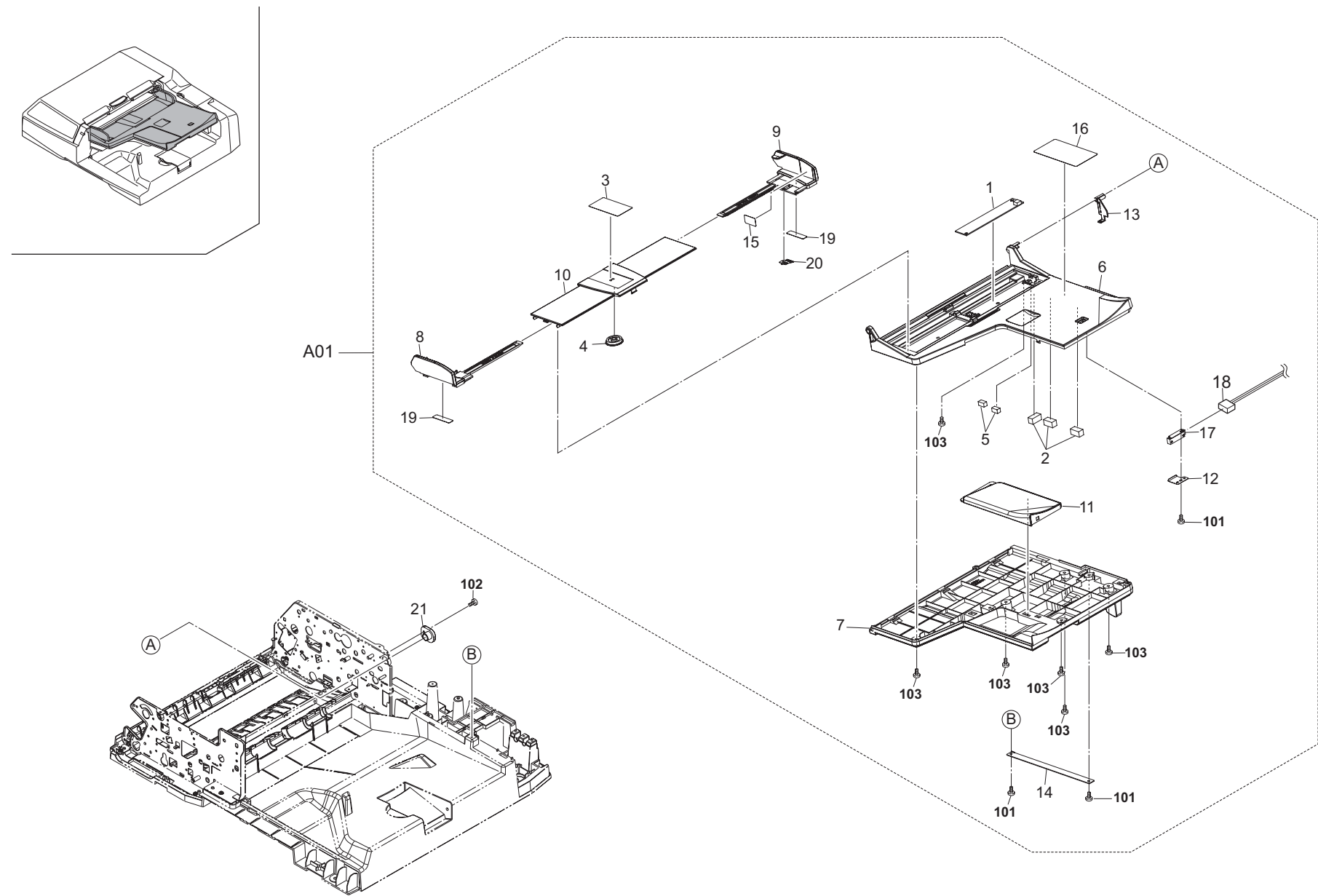


FIG. 3 TableAssy

3LL/3LK-1

	Ref. No.	Part.No.	Alternative.	Description	Quantity		
					120	230	240
⊙	A01	303LL94050	3LL94050	PARTS TABLE ASSY A	1		
⊙	A01	303LL94170	3LL94170	PARTS TABLE ASSY E		1	1
⊙	1	*2C901050	2C901050	PCB MPF SIZE ASSY	1	1	1
⊙	2	*302H012330	2H012330	SEAL WIRE A	3	3	3
⊙	3	*303H605110	3H605110	LABEL MSP A	1	1	1
⊙	4	*303JX06070	3JX06070	PINION GEAR	1	1	1
⊙	5	*303K502070	3K502070	SEAL WIRE	2	2	2
⊙	6	*303LL06010	3LL06010	BASE TABLE	1	1	1
⊙	7	*303LL06020	3LL06020	COVER TABLE	1	1	1
⊙	8	*303LL06030	3LL06030	FRONT CURSOR	1	1	1
⊙	9	*303LL06040	3LL06040	REAR CURSOR	1	1	1
⊙	10	*303LL06050	3LL06050	COVER CURSOR	1	1	1
⊙	11	*303LL06070	3LL06070	SUB TABLE	1	1	1
⊙	12	*303LL06090	3LL06090	MOUNT ORIGINAL SENSOR	1	1	1
⊙	13	*303LL06100	3LL06100	COVER TABLE WIRE	1	1	1
⊙	14	*303LL06110	3LL06110	STRAP TABLE	1	1	1
⊙	15	*303LL34100	3LL34100	LABEL ORIGINAL MAX	1	1	1
⊙	16	*303LL34130	3LL34130	LABEL CAUTION B INCH	1		
⊙	16	*303LL34140	3LL34140	LABEL CAUTION B CENTI		1	1
⊙	17	*303LL94160	3LL94160	PARTS SENSOR ORIGINAL 4P	1	1	1
⊙	18	*303LL46040	3LL46040	WIRE TABLE	1	1	1
⊙	19	*3HL06090	3HL06090	CUSHION CURSOR	2	2	2
⊙	20	*3HL06110	3HL06110	TERMINAL PAPER SIZE	1	1	1
⊙	21	303LL06060	3LL06060	BUSH TABLE	1	1	1

	Ref. No.	Part.No.	Alternative.	Description	Quantity		
					120	230	240
	101	7BB200308H	BB105660	+BIND T.T P SCREW 3X8			
	102	7BB100306H1	BB105820	+BIND T.T S SCREW 3X6			
	103	7BB282308H	BB111240	+TP-FLAT T.T P SCREW 3X8(BLACK)			

- Parts with "*" are component parts or sub-assemblies of the assembly appearing immediately above them.
- Parts with "⊙" indicate regular maintenance parts.

FIG. 4 Paper Conveying Section 1

3LL/3LK-1

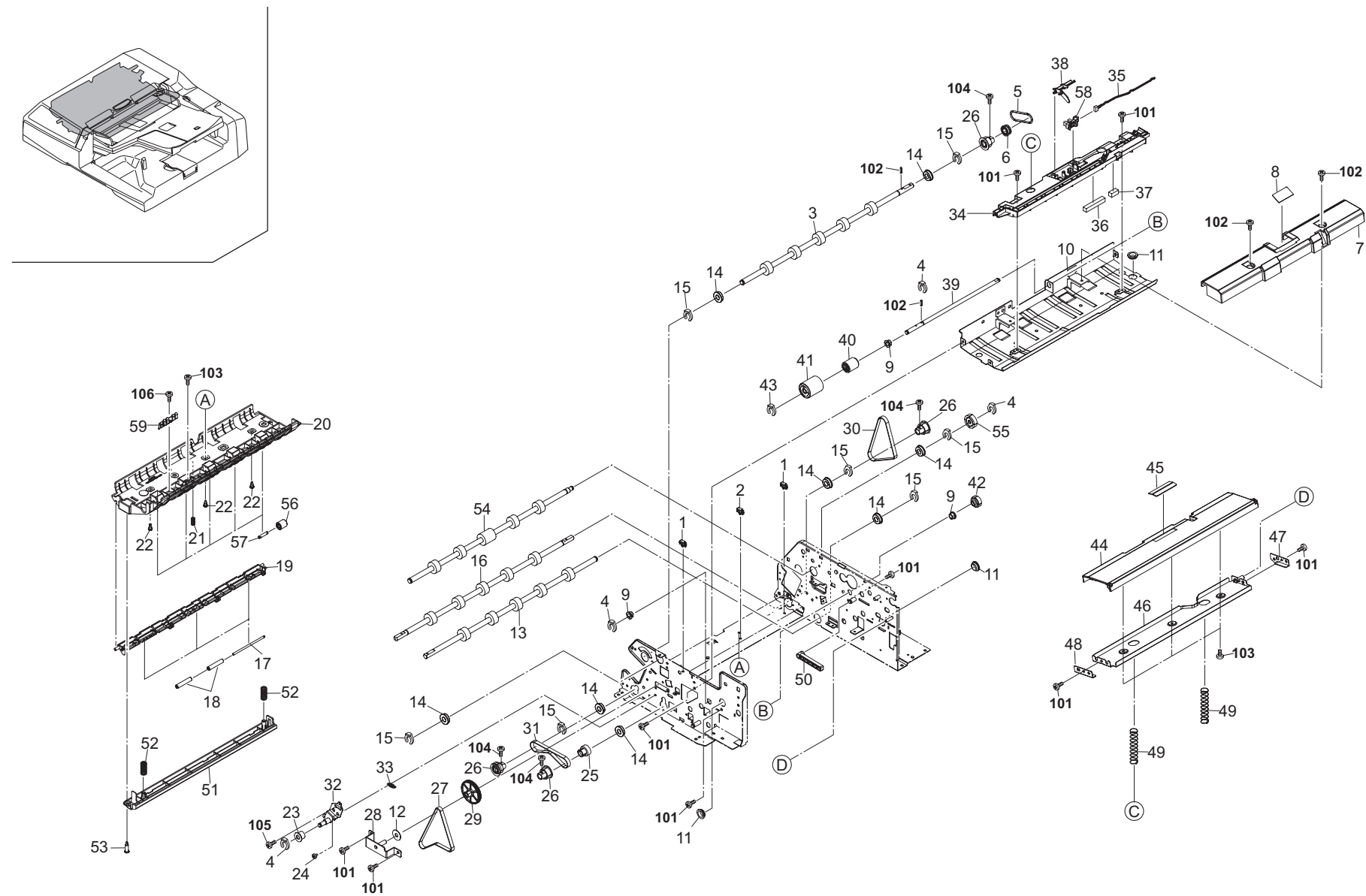


FIG. 4 Paper Conveying Section 1

3LL/3LK-1

	Ref. No.	Part.No.	Alternative.	Description	Quantity		
					120	230	240
	1	7YZM610008++H01	YZ037940	ACCESS.SADDLE	2	2	2
	2	7YZM610008++H01	YZ037940	ACCESS.SADDLE (Reversed DP)	1	1	1
⊙	3	303LL94080	3LL94080	PARTS ROLLER CONVEYING UPPER	1	1	1
⊙	4	5MVX111DN003	2A806250	RING STOPPER /A-49 FEED A4	4	4	4
⊙	5	303LK24150	3LK24150	BELT CIS DRIVE (Dual Scan DP)	1	1	1
⊙	6	303JX07380	3JX07380	V PULLEY B (Dual Scan DP)	1	1	1
⊙	7	303LL07210	3LL07210	LOWER GUIDE PF	1	1	1
⊙	8	303LL07480	3LL07480	FILM SEPARATION	1	1	1
	9	3CY07080	3CY07080	BUSHING 6	3	3	3
	10	303LL02100	3LL02100	GUIDE PAPER FEED	1	1	1
	11	7YZM110001++H01	YZ009420	ACCESS.BUSHING	3	3	3
	12	75714210	75714210	COLLAR DEVELOPING UNIT	1	1	1
⊙	13	303LL94070	3LL94070	PARTS ROLLER CONVEYING RIGHT	1	1	1
⊙	14	28107400	28107400	BEARING,688ZZNR	8	8	8
⊙	15	2BC06910	2BC06910	STOPPER 6	7	7	7
⊙	16	303LL94060	3LL94060	PARTS ROLLER CONVEYING LEFT	1	1	1
	17	303LL24180	3LL24180	SHAFT GUIDE READING	3	3	3
⊙	18	303LL24190	3LL24190	PULLEY GUIDE READING	6	6	6
	19	303LL24220	3LL24220	HOLDER READ PULLEY	1	1	1
	20	303LL24090	3LL24090	GUIDE CONVEYING LOW	1	1	1
	21	303LL24230	3LL24230	SPRING READING PULLEY	1	1	1
	22	302FZ03070	2FZ03070	RETAINING PIN DRAWER	3	3	3
⊙	23	28801190	48928800	PULLEY,TIMING BELT	1	1	1
	24	303CG07031	3CG07031	PIN,PAPER GUIDE	1	1	1
⊙	25	303LL31340	3LL31340	PULLEY 20 CONVEYING	1	1	1
⊙	26	303LL31330	3LL31330	PULLEY 38 CONVEYING	4	4	4
⊙	27	303LL31060	3LL31060	BELT SHIFT ROLLER	1	1	1
	28	303LL31080	3LL31080	MOUNT JAM DIAL	1	1	1
	29	303LL31490	3LL31490	DIAL JAM REMOVALMENT	1	1	1
⊙	30	303LL31320	3LL31320	BELT CONVEYING R	1	1	1
⊙	31	303LL31310	3LL31310	BELT CONVEYING F	1	1	1
	32	303LL31380	3LL31380	PLATE TENSION CONV	1	1	1
	33	303LL31390	3LL31390	SPRING TENSION CONV	1	1	1
	34	303LL02120	3LL02120	MOUNT SENSOR	1	1	1
	35	303LL46050	3LL46050	WIRE EJECT	1	1	1
	36	303LL02480	3LL02480	SEAL WIRE	1	1	1
	37	303K502070	3K502070	SEAL WIRE	1	1	1
⊙	38	303LL02130	3LL02130	ACTUATOR LOOP SWITCH	1	1	1
	39	303LL07180	3LL07180	SHAFT SEPARATION	1	1	1
⊙	40	2FB06100	2FB06100	TORQUE LIMITER FEED	1	1	1
⊙	41	303LL07190	3LL07190	PULLEY SEPARATION	1	1	1
⊙	42	303LL31130	3LL31130	GEAR Z20R SEPARATION	1	1	1
	43	5MVL177DN001	2FB06810	RING STOPPER 4	1	1	1
	44	303LL07220	3LL07220	GUIDE LIFT PF	1	1	1
⊙	45	303JX06260	3JX06260	PAD LIFT	1	1	1
	46	303LL07250	3LL07250	LIFT PLATE PF	1	1	1
	47	303LL07240	3LL07240	REAR PLATE LIFT	1	1	1
	48	303LL07230	3LL07230	FRONT PLATE LIFT	1	1	1
	49	303LL07270	3LL07270	SPRING LIFT	2	2	2
⊙	50	303LL07260	3LL07260	LEVER LIFT	1	1	1

	Ref. No.	Part.No.	Alternative.	Description	Quantity		
					120	230	240
	51	303LL24010	3LL24010	GUIDE READING	1	1	1
	52	303LL24140	3LL24140	SPRING READING GUIDE	2	2	2
	53	303LL24250	3LL24250	PIN READING GUIDE	1	1	1
⊙	54	303LL94090	3LL94090	PARTS ROLLER REGISTRATION	1	1	1
⊙	55	303LL31190	3LL31190	GEAR Z25L REGISTRATION	1	1	1
	56	3H608150	3H608150	SHAFT C PULLEY	5	5	5
⊙	57	3HL08080	3HL08080	PULLEY CONVEYING	5	5	5
⊙	58	2C927210	2C927210	SENSOR 248NL1	1	1	1
	59	303LK24100	3LK24100	PLATE CIS PWB (Dual Scan DP)	1	1	1
	101	7BB700308H	BB105600	+BIND T.T S SCREW 3X8 SR			
	102	5MBP2010WXSP	E0020100	SPRING PIN / M2 X 10 S-BLK			
	103	7BB202308H	BB105690	+TP-FLAT T.T P SCREW 3X8			
	104	7BB600308H1	BB105850	+BIND M SCREW 3X8 R			
	105	7BB006306H	BB056380	ROUND HEAD SCREW WITH SW.W M3X6			
	106	7BB200308H	BB105660	+BIND T.T P SCREW 3X8			

- Parts with "+" are component parts or sub-assemblies of the assembly appearing immediately above them.
- Parts with "⊙" indicate regular maintenance parts.

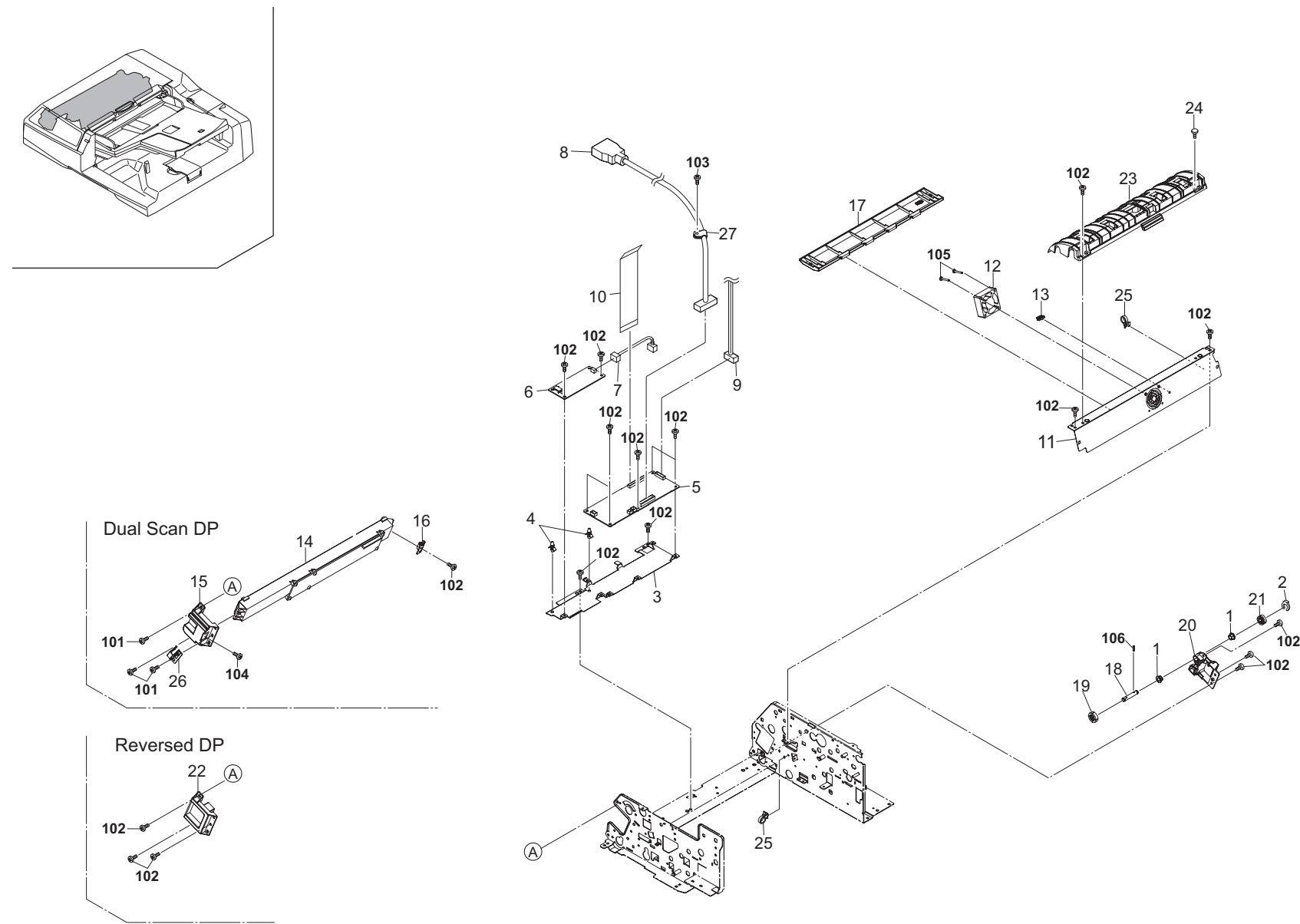


FIG. 5 Paper Conveying Section 2

3LL/3LK-1

Ref. No.	Part.No.	Alternative.	Description	Quantity		
				120	230	240
1	3CY07080	3CY07080	BUSHING 6 (Dual Scan DP)	2	2	2
2	5MVX111DN003	2A806250	RING STOPPER /A-49 FEED A4 (Dual Scan DP)	1	1	1
3	303LK24070	3LK24070	MOUNT CIS PWB (Dual Scan DP)	1	1	1
4	M2108000	49628603	SPACER,KGLS-3S (Dual Scan DP)	2	2	2
⊙	5	303LK94010	PARTS SHD PWB ASSY SP (Dual Scan DP)	1	1	1
⊙	6	303LK94020	PARTS INVERTER COLOR PWB (Dual Scan DP)	1	1	1
7	303LK46040	3LK46040	WIRE INVERTER (Dual Scan DP)	1	1	1
⊙	8	303LK46010	WIRE INTERFACE VIDEO (Dual Scan DP)	1	1	1
9	303LK46030	3LK46030	WIRE SHD (Dual Scan DP)	1	1	1
⊙	10	303JX46050	FFC CIS (Dual Scan DP)	1	1	1
11	303LL24070	3LL24070	STAY CONVEYING UPPER	1	1	1
⊙	12	302H044120	FAN COOLING 40-15 (Dual Scan DP)	1	1	1
13	7YZM610007++H01	YZ023340	ACCESS.SADDLE (Dual Scan DP)	1	1	1
⊙	14	303LK93010	PARTS A3 COLOR CIS (Dual Scan DP)	1	1	1
15	303LK24050	3LK24050	GUIDE CIS ROLLER (Dual Scan DP)	1	1	1
16	303LK24110	3LK24110	REAR MOUNT CIS (Dual Scan DP)	1	1	1
17	303LK24090	3LK24090	COVER CONVEYING (Dual Scan DP)	1	1	1
18	303LK24140	3LK24140	SHAFT CIS DRIVE (Dual Scan DP)	1	1	1
⊙	19	303LK24130	GEAR Z20L CIS (Dual Scan DP)	1	1	1
20	303LK24120	3LK24120	REAR GUIDE CIS ROLLER (Dual Scan DP)	1	1	1
⊙	21	303JX07370	V PULLEY A (Dual Scan DP)	1	1	1
22	303LL24240	3LL24240	COVER FRONT FRAME (Reversed DP)	1	1	1
23	303LL24080	3LL24080	GUIDE CONVEYING UPPER	1	1	1
24	302FZ03070	2FZ03070	RETAINING PIN DRAWER	1	1	1
25	M70AF010	M70AF010	CLAMP,LCT-1.5SIEM(TAKEUCHI) (Dual Scan DP)	2	2	2
26	303LK24160	3LK24160	GROUND PLATE CIS (Dual Scan DP)	1	1	1
27	M7005010	M7005010	CLAMP,EMT-3N(TAKEUCHI) (Dual Scan DP)	1	1	1

Ref. No.	Part.No.	Alternative.	Description	Quantity		
				120	230	240
101	7BB100306H1	BB105820	+BIND T.T S SCREW 3X6			
102	7BB700308H	BB105600	+BIND T.T S SCREW 3X8 SR			
103	7BB702308H	BB107060	+TP-FLAT T.T S SCREW 3X8 SR			
104	7BB200308H	BB105660	+BIND T.T P SCREW 3X8			
105	7BB700320H	BB105620	+BIND T.T S SCREW 3X20 SR			
106	5MBP2010WXSP	E0020100	SPRING PIN / M2 X 10 S-BLK			

- Parts with "*" are component parts or sub-assemblies of the assembly appearing immediately above them.
- Parts with "⊙" indicate regular maintenance parts.

This is a detailed exploded view diagram of a mechanical assembly, likely a piece of industrial machinery. The diagram shows various components and their assembly relationships, indicated by leader lines and callouts. Key parts include:

- Top Section:** A large rectangular plate (70) is shown above a complex frame (67, 72, 71, 68). A small rectangular component (68) is shown to the left.
- Central Assembly:** A main body (16) is shown with various internal components like gears (33, 36, 37, 38, 39), shafts (32, 45), and bearings (101, 102, 103, 104). A callout 'B' points to a specific internal area.
- Right Section:** A vertical assembly (35) is shown with various components like a spring (65), a lever (18), and a handle (69). A callout 'A' points to a specific component (33).
- Bottom Section:** A long horizontal shaft (45) is shown with various components like a motor (44), a pulley (50), and a handle (53). A callout 'C' points to a specific component (24).

The diagram uses a variety of callouts to identify parts, including numbers (e.g., 1, 2, 3, 4, 5, 6, 7, 8, 9, 10, 11, 12, 13, 14, 15, 16, 17, 18, 19, 20, 21, 22, 23, 24, 25, 26, 27, 28, 29, 30, 31, 32, 33, 34, 35, 36, 37, 38, 39, 40, 41, 42, 43, 44, 45, 46, 47, 48, 49, 50, 51, 52, 53, 54, 55, 56, 57, 58, 59, 60, 61, 62, 63, 64, 65, 66, 67, 68, 69, 70, 71, 72, 73, 74, 75, 76, 77, 78, 79, 80, 81, 82, 83, 84, 85, 86, 87, 88, 89, 90, 91, 92, 93, 94, 95, 96, 97, 98, 99, 100, 101, 102, 103, 104) and letters (A, B, C) to indicate specific components and their assembly points.

FIG. 6 Paper Feed Section

3LL/3LK-1

	Ref. No.	Part.No.	Alternative.	Description	Quantity		
					120	230	240
	1	3H608150	3H608150	SHAFT C PULLEY	5	5	5
	2	3H608200	3H608200	PULLEY CONVEYING	5	5	5
	3	303H608091	3H608091	HOLDER C PULLEY	5	5	5
	4	303LL07300	3LL07300	LEFT GUIDE PF (Reversed DP)	1	1	1
	4	303LK07010	3LK94030	LEFT GUIDE PF (Dual Scan DP)	1	1	1
	5	303LL02490	3LL02490	PIN PF COVER FRONT	1	1	1
	6	3H608230	3H608230	SPRING C PULLEY	5	5	5
	7	303H316360	3H316360	SPRING CONVEYING (Dual Scan DP)	2	2	2
	8	303LK94030	3LK94030	PARTS ROLLER CIS (Dual Scan DP)	1	1	1
	9	303LK07160	3LK07160	FRONT BUSH CIS ROLLER (Dual Scan DP)	1	1	1
	10	303LK07040	3LK07040	FRONT HOLDER CIS ROLLER (Dual Scan DP)	1	1	1
	11	303LK07030	3LK07030	REAR BUSH CIS ROLLER (Dual Scan DP)	1	1	1
	12	303LK07050	3LK07050	REAR HOLDER CIS ROLLER (Dual Scan DP)	1	1	1
	13	303LK07110	3LK07110	GEAR Z16R CIS (Dual Scan DP)	1	1	1
	14	303LK07120	3LK07120	COLLAR CIS ROLLER (Dual Scan DP)	1	1	1
	15	303LK07060	3LK07060	FILM CIS ROLLER (Dual Scan DP)	2	2	2
	16	303LL07010	3LL07010	RIGHT GUIDE PF	1	1	1
	17	2C927210	2C927210	SENSOR 248NL1	2	2	2
	18	303LL07280	3LL07280	ACTUATOR SET	1	1	1
	19	2FG27110	2FG27110	SWITCH REGISTRATION	2	2	2
	20	303LL07400	3LL07400	GROUND PLATE FEED SW	2	2	2
	21	303LL07060	3LL07060	FRONT PLATE PF ROLLER	1	1	1
	22	3CY07080	3CY07080	BUSHING 6	1	1	1
	23	303LL07080	3LL07080	MOUNT PF SENSOR	1	1	1
	24	303LL07040	3LL07040	FRONT PLATE UPPER GUIDE	1	1	1
	25	303LL46020	3LL46020	WIRE FEED COVER (Reversed DP)	1	1	1
	25	303LK46050	3LK46050	WIRE FEED COVER (Dual Scan DP)	1	1	1
	26	303K502070	3K502070	SEAL WIRE	2	2	2
	27	303K502070	3K502070	SEAL WIRE (Dual Scan DP)	1	1	1
	28	303LL07360	3LL07360	MOUNT LED	1	1	1
	29	303LL94020	3LL94020	PARTS LED PWB ASSY SP	1	1	1
	30	303LL02190	3LL02190	PIN PF COVER	1	1	1
	31	303LK07090	3LK07090	MOUNT CIS SENSOR (Dual Scan DP)	1	1	1
	32	303LL07130	3LL07130	SHAFT REGISTRATION PULLEY	1	1	1
	33	302H012330	2H012330	SEAL WIRE A	8	8	8
	34	302H012330	2H012330	SEAL WIRE A (Dual Scan DP)	1	1	1
	35	303LL07050	3LL07050	REAR PLATE UPPER GUIDE	1	1	1
	36	303JX07340	3JX07340	PULLEY REG B	1	1	1
	37	303JX07080	3JX07080	PULLEY REGISTRATION	4	4	4
	38	303LL07170	3LL07170	SPRING REGISTRATION	4	4	4
	39	303LL07100	3LL07100	MOUNT REGISTRATION SPRING	1	1	1
	40	303LL07510	3LL07510	PLATE LEFT GUIDE	1	1	1
	41	303JX07320	3JX07320	SHAFT BELT	1	1	1
	42	303LL07140	3LL07140	HOLDER LF	1	1	1
	43	303LL07150	3LL07150	WEIGHT LF	1	1	1
	44	3H607020	3H607020	PULLEY LF	1	1	1
	45	303JX07260	3JX07260	SHAFT LF	1	1	1
	46	2BG22960	2BG22960	BUSH 6	2	2	2
	47	303JX07370	3JX07370	V PULLEY A	2	2	2
	48	5MVX111DN003	2A806250	RING STOPPER /A-49 FEED A4	3	3	3
	49	303JX07030	3JX07030	HOLDER PF	1	1	1
	50	3H607240	3H607240	GUIDE PF SPRING	2	2	2
	51	303LL07470	3LL07470	SPRING PF	2	2	2
	52	3H607040	3H607040	COLLAR PF B	1	1	1
	53	303JX07330	3JX07330	BELT PF	1	1	1
	54	3H607030	3H607030	COLLAR PF A	1	1	1
	55	303LL07110	3LL07110	FRONT SHAFT PF ROLLER	1	1	1
	56	3H607130	3H607130	BUSHING PF HOLDER	2	2	2
	57	303JX07380	3JX07380	V PULLEY B	2	2	2
	58	2BC06910	2BC06910	STOPPER 6	4	4	4
	59	303LL07490	3LL07490	BELT LF	2	2	2
	60	303LL07340	3LL07340	SPACER PF ROLLER	1	1	1
	61	2BC06510	2BC06510	BUSHING 8	1	1	1
	62	303LL31180	3LL31180	GEAR Z23R PF	1	1	1
	63	303LL07330	3LL07330	GUIDE PF SHAFT	1	1	1
	64	303LL07020	3LL07020	HANDLE PF COVER	1	1	1
	65	303LL07420	3LL07420	SPRING HOOK	1	1	1
	66	303LL07410	3LL07410	SPRING GND	3	3	3
	67	303LL04030	3LL04030	COVER PF	1	1	1
	68	303LL04091	3LL04091	COVER LED	1	1	1
	69	303LL07430	3LL07430	STRAP PF A	1	1	1
	70	303LL34090	3LL34090	LABEL CAUTION A ENG (Reversed DP)	1	1	1
	70	303LK34020	3LK34020	LABEL CAUTION A ENG (Dual Scan DP)	1	1	1
	71	303LL34010	3LL34010	LABEL SIZE DIRECTION METRIC	1	1	1
	72	303LL34020	3LL34020	LABEL SIZE DIRECTION INCH	1	1	1
	73	2FG27110	2FG27110	SWITCH REGISTRATION (Dual Scan DP)	1	1	1
	74	303LK07140	3LK07140	FILM CIS ROLLER LOW (Dual Scan DP)	1	1	1
	75	303LK07150	3LK07150	MOUNT SPRING GROUND CIS	1	1	1
	76	303LL07500	3LL07500	STAY PF LEVER	2	2	2
	101	7BB200308H	BB105660	+BIND T.T P SCREW 3X8			
	102	C2895150	C2895150	SHIM 8.2X1.0T			
	103	5MBP2010WXP	E0020100	SPRING PIN / M2 X 10 S-BLK			
	104	7BB700308H	BB105600	+BIND T.T S SCREW 3X8 SR			

- Parts with "*" are component parts or sub-assemblies of the assembly appearing immediately above them.
- Parts with "⊙" indicate regular maintenance parts.

FIG. 7 Duplex Section

3LL/3LK

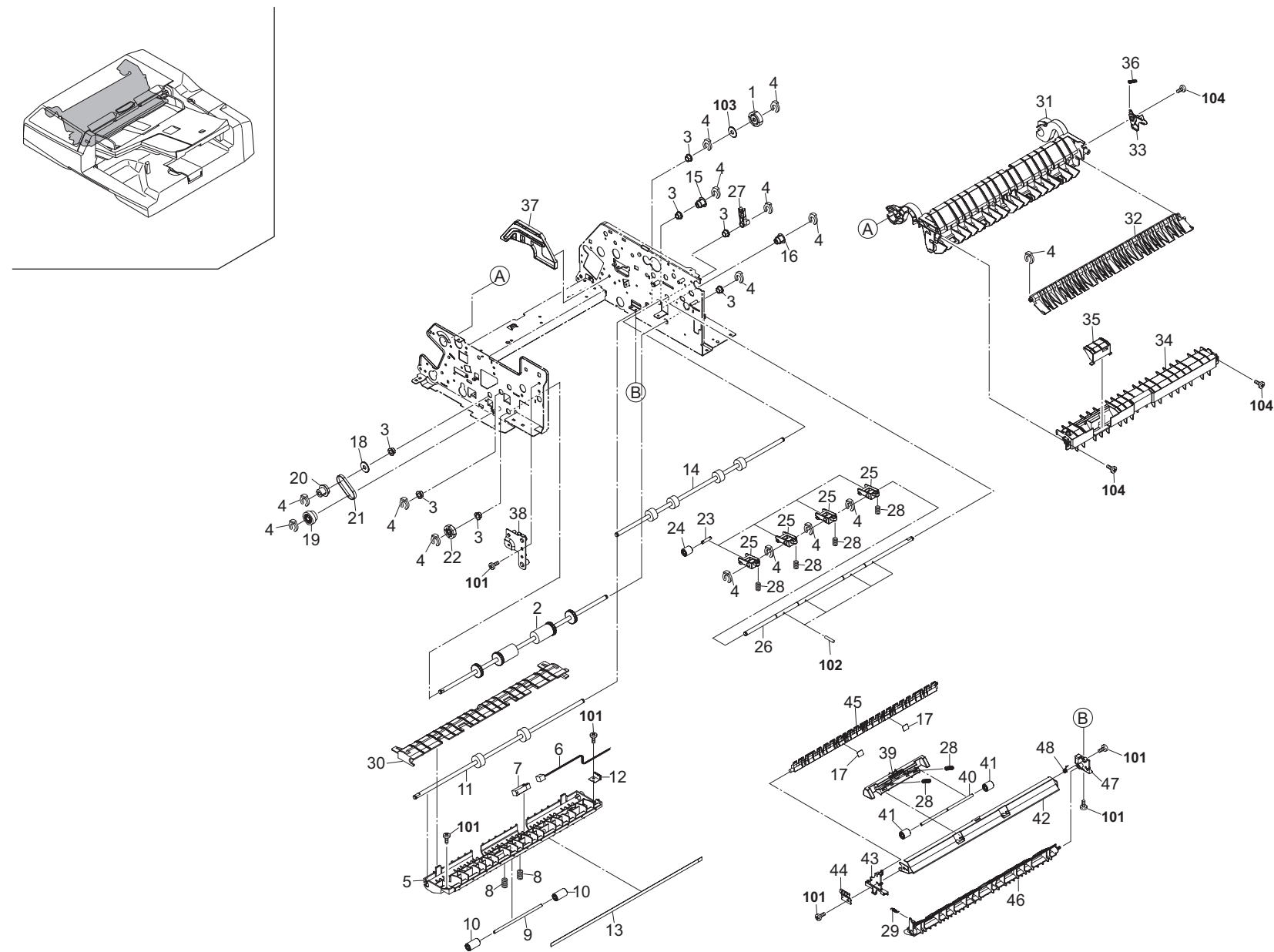


FIG. 7 Duplex Section

3LL/3LK-1

	Ref. No.	Part.No.	Alternative.	Description	Quantity		
					120	230	240
⊙	1	303JX31170	3JX31170	GEAR 20 R ONEWAY	1	1	1
⊙	2	303LL94100	3LL94100	PARTS ROLLER EJECT	1	1	1
	3	3CY07080	3CY07080	BUSHING 6	7	7	7
	4	5MVX111DN003	2A806250	RING STOPPER /A-49 FEED A4	14	14	14
	5	303LL29100	3LL29100	LOWER GUIDE LOOP	1	1	1
	6	303LL46100	3LL46100	WIRE EJECTSW	1	1	1
⊙	7	2FG27110	2FG27110	SWITCH REGISTRATION	1	1	1
	8	3HL10120	3HL10120	SPRING,EJECT PULLEY	2	2	2
	9	303LL29200	3LL29200	SHAFT EJECT PULLEY	1	1	1
⊙	10	303JX28030	3JX28030	PULLEY EXIT	2	2	2
⊙	11	303LL94120	3LL94120	PARTS ROLLER EJECT SHIFT	1	1	1
	12	303LL29240	3LL29240	GROUND PLATE EJECT	1	1	1
⊙	13	303K502130	3K502130	STATIC ELIMINATOR EJECT	1	1	1
⊙	14	303LL94110	3LL94110	PARTS ROLLER LOOP	1	1	1
⊙	15	303LL31510	3LL31510	PULLEY LOOP 20	1	1	1
⊙	16	303LL31550	3LL31550	PULLEY LOOP IDLE	1	1	1
	17	303LL29300	3LL29300	FILM SHIFT GUIDE	2	2	2
	18	75714210	75714210	COLLAR DEVELOPING UNIT	1	1	1
⊙	19	303JY31240	3JY31240	GEAR SADDLE A	1	1	1
⊙	20	303LL31050	3LL31050	PULLEY 20/25 SHIFT	1	1	1
⊙	21	303LL31070	3LL31070	BELT EJECT ROLLER	1	1	1
⊙	22	303LL31500	3LL31500	GEAR EJECT 25	1	1	1
	23	3H608150	3H608150	SHAFT C PULLEY	4	4	4
⊙	24	3HL08080	3HL08080	PULLEY CONVEYING	4	4	4
	25	303LL29150	3LL29150	HOLDER LOOP PULLEY	4	4	4
	26	303LL29130	3LL29130	SHAFT LOOP PRESSURE	1	1	1
	27	303LL29140	3LL29140	LEVER LOOP PRESSURE	1	1	1
	28	303JX24190	3JX24190	SPRING CONVEYING	6	6	6
	29	303LL29260	3LL29260	SPRING SHIFT SOLENOID	1	1	1
	30	303LL29090	3LL29090	UPPER GUIDE LOOP	1	1	1
	31	303LL29070	3LL29070	GUIDE LOOP REMOVE A	1	1	1
	32	303LL29060	3LL29060	GUIDE UPPER SHIFT	1	1	1
⊙	33	303LL29230	3LL29230	LEVER UPPER SHIFT	1	1	1
	34	303LL29080	3LL29080	GUIDE LOOP REMOVE B	1	1	1
	35	303LL29280	3LL29280	HANDLE JAM GUIDE	1	1	1
	36	3HL07240	3HL07240	SPRING HOOK	1	1	1
	37	303LL07450	3LL07450	GUIDE STRAP	1	1	1
⊙	38	303LL02070	3LL02070	SUPPORT PLATE TABLE	1	1	1
	39	303LL29180	3LL29180	HOLDER SHIFT PULLEY	1	1	1
	40	303LL29190	3LL29190	SHAFT SHIFT PULLEY	1	1	1
⊙	41	3HL10140	3HL10140	PULLEY LOOP	2	2	2
	42	303LL29030	3LL29030	STAY LOOP SHIFT	1	1	1
	43	303LL29110	3LL29110	FRONT HOLDER LOOP SHIFT	1	1	1
	44	303LL29220	3LL29220	GROUND PLATE SHIFT	1	1	1
	45	303LL29050	3LL29050	GUIDE EJECT SHIFT	1	1	1
	46	303LL29040	3LL29040	GUIDE LOOP SHIFT	1	1	1
	47	303LL29120	3LL29120	REAR HOLDER LOOP SHIFT	1	1	1
	48	303LL29210	3LL29210	SPRING SHIFT GUIDE	1	1	1

	Ref. No.	Part.No.	Alternative.	Description	Quantity		
					120	230	240
	101	7BB700308H	BB105600	+BIND T.T S SCREW 3X8 SR			
	102	E5120100	E5120100	PARALLEL PIN H7A 2X10 SUS			
	103	7BC06062A0A0H01	BC056490	POLY SLIDER WASHER 6.2X10X1.0T			
	104	7BB202308H	BB105690	+TP-FLAT T.T P SCREW 3X8			

- Parts with "•" are component parts or sub-assemblies of the assembly appearing immediately above them.
- Parts with "⊙" indicate regular maintenance parts.

3LL/3LK



FIG. 8 Drive Section & Electrical Components

3LL/3LK-1

	Ref. No.	Part.No.	Alternative.	Description	Quantity		
					120	230	240
	1	303LL31110	3LL31110	MOUNT PF DRIVE	1	1	1
	2	3CY07080	3CY07080	BUSHING 6	6	6	6
	3	303LL31200	3LL31200	SHAFT A PF DRIVE	1	1	1
	4	5MVX111DN003	2A806250	RING STOPPER /A-49 FEED A4	6	6	6
⊙	5	303LL31100	3LL31100	GEAR Z20L PF	1	1	1
	6	303LL31290	3LL31290	SHAFT B PF DRIVE	1	1	1
⊙	7	303LL31440	3LL31440	GEAR Z27R ONEWAY	1	1	1
⊙	8	303LL31150	3LL31150	GEAR Z40L Z18L ONEWAY	1	1	1
⊙	9	303LL31140	3LL31140	GEAR Z35L PF	1	1	1
⊙	10	303LL31160	3LL31160	GEAR Z23R PF	1	1	1
⊙	11	303LL31090	3LL31090	GEAR Z41R PF	1	1	1
	12	303LL31120	3LL31120	PLATE PF DRIVE	1	1	1
⊙	13	303LL31170	3LL31170	GEAR Z18L PF	1	1	1
	14	303LL02350	3LL02350	CLOSED BUSHING A	1	1	1
⊙	15	303H321110	3H321110	CUSHION EJECT GUIDE B	1	1	1
	16	7YZM610008++H01	YZ037940	ACCESS.SADDLE (Reversed DP)	1	1	1
	17	M21AH010	M21AH010	BAND,RSG-130-V0(KITAGAWA)	1	1	1
	18	303CG07031	3CG07031	PIN,PAPER GUIDE	2	2	2
⊙	19	303LL94150	3LL94150	PARTS SOLENOID SHIFT	1	1	1
	20	303LL29270	3LL29270	SPRING SHIFT SOL B	1	1	1
	21	303LL29170	3LL29170	MOUNT SHIFT SOLENOID	1	1	1
⊙	22	303JX44010	3JX44010	MOTOR DP	2	2	2
	23	303LL31010	3LL31010	MOUNT LOOP DRIVE	1	1	1
⊙	24	303LL31030	3LL31030	PULLEY 21/20 LOOP	1	1	1
⊙	25	303LL31040	3LL31040	BELT LOOP ROLLER	1	1	1
⊙	26	303LL94140	3LL94140	PARTS SOLENOID LOOP	1	1	1
	27	303LL29290	3LL29290	SPRING LOOP SOL	1	1	1
	28	303LL31020	3LL31020	MOUNT LOOP SOLENOID	1	1	1
	29	3H622270	3H622270	SPRING C MOTOR	1	1	1
	30	303LL02440	3LL02440	MOUNT PWB	1	1	1
	31	303LL02460	3LL02460	HOLDER WIRE E	1	1	1
	32	303LK02050	3LK02050	HOLDER INTERFACE (Dual Scan DP)	1	1	1
	32	303LL02140	3LL02140	HOLDER INTERFACE (Reversed DP)	1	1	1
	33	303LL02310	3LL02310	PLATE CONV DRIVE B	1	1	1
⊙	34	303LL94130	3LL94130	PARTS MOTOR DP	1	1	1
	35	303LL31300	3LL31300	MOUNT CONV DRIVE	1	1	1
	36	303LL31530	3LL31530	SPRING C MOTOR	1	1	1
	37	303LL02250	3LL02250	STAY HINGE	1	1	1
⊙	38	3H627230	3H627230	MOTOR LIFT	1	1	1
	39	303LL31540	3LL31540	MOUNT LIFT MOTOR	1	1	1
	40	303LL31210	3LL31210	MOUNT LIFT DRIVE	1	1	1
⊙	41	303H622331	3H622331	GEAR 20/65 IDLE	3	3	3
	42	303LL31280	3LL31280	SHAFT CAM LIFT	1	1	1
⊙	43	303LL31260	3LL31260	GEAR Z32S LIFT	1	1	1
	44	303LL31220	3LL31220	COVER LIFT DRIVE	1	1	1
	45	303LL31470	3LL31470	CAM LIFT	1	1	1
	46	303LL04120	3LL04120	COVER FRAME REAR	1	1	1
	47	303LL07320	3LL07320	MOUNT INTERLOCK SW	1	1	1
⊙	48	303J945030	3J945030	SWITCH INTERLOCK	1	1	1
⊙	49	2C927210	2C927210	SENSOR 248NL1	1	1	1

	Ref. No.	Part.No.	Alternative.	Description	Quantity		
					120	230	240
	50	7YZM610007++H01	YZ023340	ACCESS.SADDLE	1	1	1
	51	7YZM210001++H01	YZ004370	ACCESS.EDGING	1	1	1
	52	303K502070	3K502070	SEAL WIRE	1	1	1
	53	7YZM610021++H01	YZ068620	ACCESS.SADDLE	1	1	1
⊙	54	303LL94010	3LL94010	PARTS DRIVER PWB ASSY SP	1	1	1
	55	303LL46010	3LL46010	WIRE INTERFACE	1	1	1
	56	303LL02200	3LL02200	MOUNT HINGE WIRE A	1	1	1
	57	303LL46030	3LL46030	WIRE MOTOR	1	1	1
	58	303LL02320	3LL02320	HOLDER WIRE C	1	1	1
	59	303LL02330	3LL02330	HOLDER WIRE D	6	6	6
	60	303LL02330	3LL02330	HOLDER WIRE D (Dual Scan DP)	2	2	2
	61	303LL02180	3LL02180	HOLDER WIRE A	3	3	3
	62	303LL31460	3LL31460	MOUNT MOTOR PF	1	1	1
	101	5MBP2010WXP	E0020100	SPRING PIN / M2 X 10 S-BLK			
	102	7BB100306H1	BB105820	+BIND T.T S SCREW 3X6			
	103	7BB700308H	BB105600	+BIND T.T S SCREW 3X8 SR			
	104	7BB000303H	BB107000	+BIND M SCREW 3X3			
	105	7BB700320H	BB105620	+BIND T.T S SCREW 3X20 SR			
	106	7BB200308H	BB105660	+BIND T.T P SCREW 3X8			
	107	E5120100	E5120100	PARALLEL PIN H7A 2X10 SUS			
	108	7BB006306H	BB056380	ROUND HEAD SCREW WITH SW.W M3X6			

- Parts with "*" are component parts or sub-assemblies of the assembly appearing immediately above them.
- Parts with "⊙" indicate regular maintenance parts.

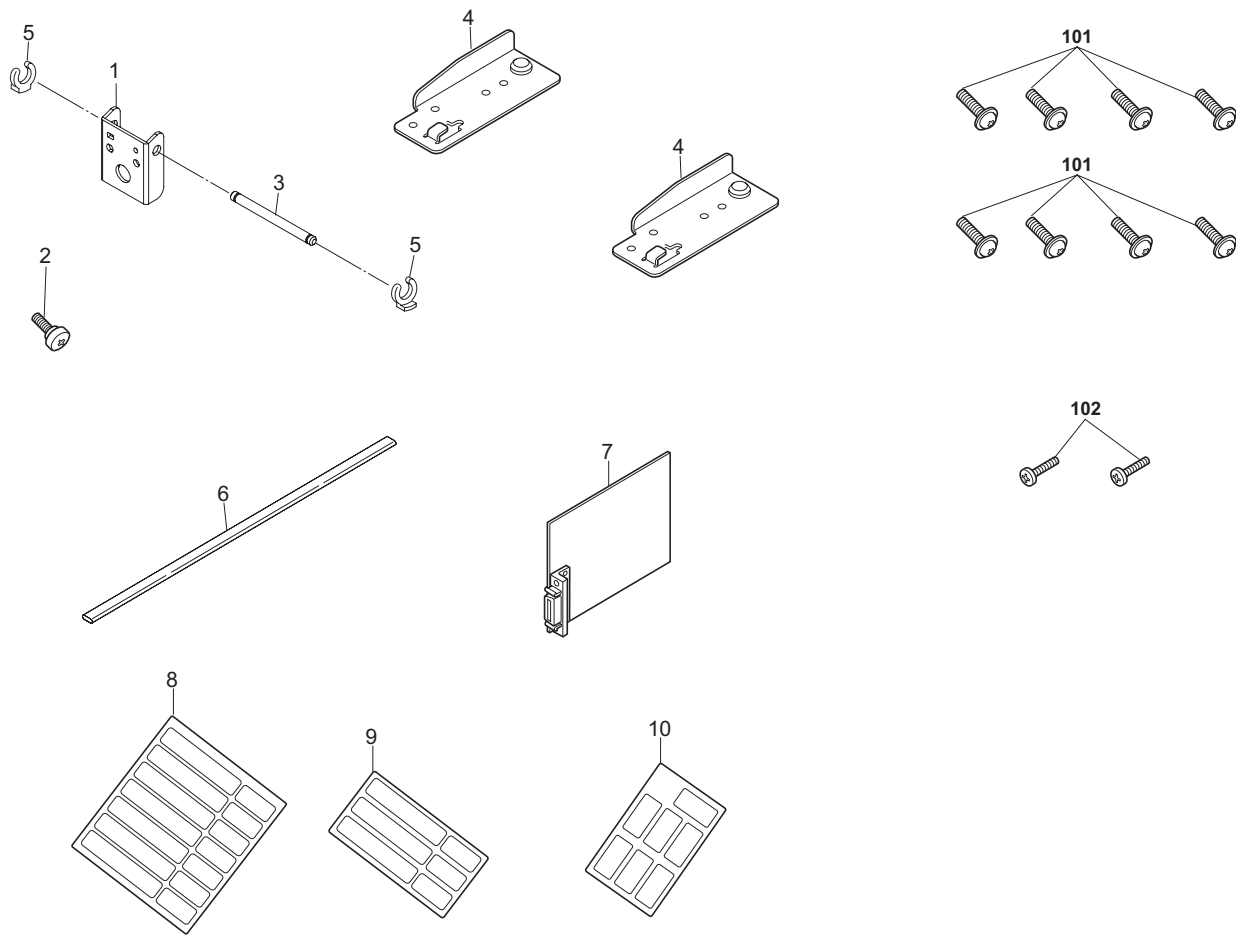


FIG. 9 Accessory

3LL/3LK-1

	Ref. No.	Part.No.	Alternative.	Description	Quantity		
					120	230	240
⊙	1	303JX02181	3JX02181	PLATE ANGLE	1	1	1
	2	303JX02260	3JX02260	PIN HINGE	1	1	1
	3	303JX02391	3JX02391	SHAFT ANGLE RESTRICTION	1	1	1
	4	303LL02380	3LL02380	PLATE GUIDE HINGE	2	2	2
	5	5MVX111DN003	2A806250	RING STOPPER /A-49 FEED A4	2	2	2
	6	7ZGSSTG1R205H01	ZG111410	SHIELD GASKET (Dual Scan DP)	1	1	1
	7	303LK94040	3LK94040	PARTS DP IF PWB ASSY SP (Dual Scan DP)	1	1	1
	8	303LL34170	3LL34170	LABEL CAUTION AB CENTI 7 NATIONS (Reversed DP)		1	1
	8	303LK34050	3LK34050	LABEL CAUTION AB CENTI 7 NATIONS (Dual Scan DP)	1		
	9	303LL34180	3LL34180	LABEL CAUTION AB INCH 3 NATIONS (Reversed DP)			
	9	303LK34060	3LK34060	LABEL CAUTION AB INCH 3 NATIONS (Dual Scan DP)	1		
	10	303LL34190	3LL34190	LABEL FACE UP 7NATIONS	1	1	1

	Ref. No.	Part.No.	Alternative.	Description	Quantity		
					120	230	240
	101	7BB607414H	BB107160	+TP-CUP M SCREW 4X14 R			
	102	7BB608P08H	BB112720	+FLAT FILLISTER M SCREW 2.6X8 R			

- Parts with "*" are component parts or sub-assemblies of the assembly appearing immediately above them.
- Parts with "⊙" indicate regular maintenance parts.

INDEX

3LL/3LK-1

	Part.No.	Alternative.	Description	Fig.No.
⊙	28107400	28107400	BEARING,688ZZNR	4
⊙	28801190	48928800	PULLEY,TIMING BELT	4
⊙	2BC06510	2BC06510	BUSHING 8	6
⊙	2BC06910	2BC06910	STOPPER 6	4,6
⊙	2BG22960	2BG22960	BUSH 6	6
⊙	2C901050	2C901050	PCB MPF SIZE ASSY	3
⊙	2C927210	2C927210	SENSOR 248NL1	2,4,6,8
⊙	2FB06100	2FB06100	TORQUE LIMITER FEED	4
⊙	2FG27110	2FG27110	SWITCH REGISTRATION	2,6,7
⊙	302FZ03070	2FZ03070	RETAINING PIN DRAWER	2,4,5
⊙	302H012330	2H012330	SEAL WIRE A	3,6
⊙	302H044120	2H044120	FAN COOLING 40-15	5
⊙	303CG07031	3CG07031	PIN,PAPER GUIDE	4,8
⊙	303H316360	3H316360	SPRING CONVEYING	6
⊙	303H321110	3H321110	CUSHION EJECT GUIDE B	8
⊙	303H604090	3H604090	CLOTH CLEANING	1
⊙	303H605110	3H605110	LABEL MSP A	3
⊙	303H608091	3H608091	HOLDER C PULLEY	6
⊙	303H622331	3H622331	GEAR 20/65 IDLE	8
⊙	303J902090	3J902090	SPONGE ORIGINAL MAT A	2
⊙	303J902110	3J902110	CUSHION ORIGINAL MAT	2
⊙	303J945030	3J945030	SWITCH INTERLOCK	8
⊙	303JC04200	3JC04200	PLATE ORIGINAL	1
⊙	303JX02090	3JX02090	SPRING PUSH SW	2
⊙	303JX02181	3JX02181	PLATE ANGLE	9
⊙	303JX02260	3JX02260	PIN HINGE	9
⊙	303JX02320	3JX02320	CUSHION ORIGINAL MAT A	1
⊙	303JX02391	3JX02391	SHAFT ANGLE RESTRICTION	9
⊙	303JX06070	3JX06070	PINION GEAR	3
⊙	303JX06260	3JX06260	PAD LIFT	4
⊙	303JX07030	3JX07030	HOLDER PF	6
⊙	303JX07080	3JX07080	PULLEY REGISTRATION	6
⊙	303JX07260	3JX07260	SHAFT LF	6
⊙	303JX07320	3JX07320	SHAFT BELT	6
⊙	303JX07330	3JX07330	BELT PF	6
⊙	303JX07340	3JX07340	PULLEY REG B	6
⊙	303JX07370	3JX07370	V PULLEY A	5,6
⊙	303JX07380	3JX07380	V PULLEY B	4,6
⊙	303JX24190	3JX24190	SPRING CONVEYING	7
⊙	303JX28030	3JX28030	PULLEY EXIT	7
⊙	303JX31170	3JX31170	GEAR 20 R ONEWAY	7
⊙	303JX44010	3JX44010	MOTOR DP	8
⊙	303JX46050	3JX46050	FFC CIS	5
⊙	303JY31240	3JY31240	GEAR SADDLE A	7
⊙	303K502070	3K502070	SEAL WIRE	2,3,4,6,8
⊙	303K502130	3K502130	STATIC ELIMINATOR EJECT	7
⊙	303LK02020	3LK02020	HINGE LEFT	2
⊙	303LK02030	3LK02030	HINGE RIGHT	2
⊙	303LK02050	3LK02050	HOLDER INTERFACE	8
⊙	303LK07010	3LK94030	LEFT GUIDE PF	6

	Part.No.	Alternative.	Description	Fig.No.
⊙	303LK07030	3LK07030	REAR BUSH CIS ROLLER	6
⊙	303LK07040	3LK07040	FRONT HOLDER CIS ROLLER	6
⊙	303LK07050	3LK07050	REAR HOLDER CIS ROLLER	6
⊙	303LK07060	3LK07060	FILM CIS ROLLER	6
⊙	303LK07090	3LK07090	MOUNT CIS SENSOR	6
⊙	303LK07110	3LK07110	GEAR Z16R CIS	6
⊙	303LK07120	3LK07120	COLLAR CIS ROLLER	6
⊙	303LK07140	3LK07140	FILM CIS ROLLER LOW	6
⊙	303LK07150	3LK07150	MOUNT SPRING GROUND CIS	6
⊙	303LK07160	3LK07160	FRONT BUSH CIS ROLLER	6
⊙	303LK24050	3LK24050	GUIDE CIS ROLLER	5
⊙	303LK24070	3LK24070	MOUNT CIS PWB	5
⊙	303LK24080	3LK24080	GUIDE CONVEYING MID	2
⊙	303LK24090	3LK24090	COVER CONVEYING	5
⊙	303LK24100	3LK24100	PLATE CIS PWB	4
⊙	303LK24110	3LK24110	REAR MOUNT CIS	5
⊙	303LK24120	3LK24120	REAR GUIDE CIS ROLLER	5
⊙	303LK24130	3LK24130	GEAR Z20L CIS	5
⊙	303LK24140	3LK24140	SHAFT CIS DRIVE	5
⊙	303LK24150	3LK24150	BELT CIS DRIVE	4
⊙	303LK24160	3LK24160	GROUND PLATE CIS	5
⊙	303LK34020	3LK34020	LABEL CAUTION A ENG	6
⊙	303LK34050	3LK34050	LABEL CAUTION AB CENTI 7 NATIONS	9
⊙	303LK34060	3LK34060	LABEL CAUTION AB INCH 3 NATIONS	9
⊙	303LK46010	3LK46010	WIRE INTERFACE VIDEO	5
⊙	303LK46030	3LK46030	WIRE SHD	5
⊙	303LK46040	3LK46040	WIRE INVERTER	5
⊙	303LK46050	3LK46050	WIRE FEED COVER	6
⊙	303LK46060	3LK46060	WIRE SOLENOID	2
⊙	303LK46070	3LK46070	WIRE OPENSU	2
⊙	303LK93010	3LK93010	PARTS A3 COLOR CIS	5
⊙	303LK94010	3LK94010	PARTS SHD PWB ASSY SP	5
⊙	303LK94020	3LK94020	PARTS INVERTER COLOR PWB	5
⊙	303LK94030	3LK94030	PARTS ROLLER CIS	6
⊙	303LK94040	3LK94040	PARTS DP IF PWB ASSY SP	9
⊙	303LL02010	3LL02010	BASE DP	2
⊙	303LL02020	3LL02020	HINGE LEFT	2
⊙	303LL02040	3LL02040	FRAME FRONT	2
⊙	303LL02050	3LL02050	FRAME REAR	2
⊙	303LL02060	3LL02060	MOUNT SPONGE	2
⊙	303LL02070	3LL02070	SUPPORT PLATE TABLE	7
⊙	303LL02080	3LL02080	SHEET LEFT GUIDE A	2
⊙	303LL02100	3LL02100	GUIDE PAPER FEED	4
⊙	303LL02110	3LL02110	TRAY LOOP	2
⊙	303LL02120	3LL02120	MOUNT SENSOR	4
⊙	303LL02130	3LL02130	ACTUATOR LOOP SWITCH	4
⊙	303LL02140	3LL02140	HOLDER INTERFACE	8
⊙	303LL02150	3LL02150	HOLDER SPRING PUSH SW	2
⊙	303LL02180	3LL02180	HOLDER WIRE A	8
⊙	303LL02190	3LL02190	PIN PF COVER	6

• Parts with "⊙" indicate regular maintenance parts.



	Part.No.	Alternative.	Description	Fig.No.		Part.No.	Alternative.	Description	Fig.No.
	303LL02200	3LL02200	MOUNT HINGE WIRE A	8		303LL07050	3LL07050	REAR PLATE UPPER GUIDE	6
	303LL02210	3LL02210	COVER SENSOR	2		303LL07060	3LL07060	FRONT PLATE PF ROLLER	6
	303LL02230	3LL02230	PLATE SENSOR	2		303LL07080	3LL07080	MOUNT PF SENSOR	6
	303LL02250	3LL02250	STAY HINGE	8		303LL07100	3LL07100	MOUNT REGISTRATION SPRING	6
	303LL02260	3LL02260	STAY FRAME REAR	2		303LL07110	3LL07110	FRONT SHAFT PF ROLLER	6
	303LL02270	3LL02270	HOLDER WIRE B	2		303LL07130	3LL07130	SHAFT REGISTRATION PULLEY	6
	303LL02280	3LL02280	MOUNT SPONGE B	2		303LL07140	3LL07140	HOLDER LF	6
	303LL02310	3LL02310	PLATE CONV DRIVE B	8		303LL07150	3LL07150	WEIGHT LF	6
	303LL02320	3LL02320	HOLDER WIRE C	8		303LL07170	3LL07170	SPRING REGISTRATION	6
	303LL02330	3LL02330	HOLDER WIRE D	8		303LL07180	3LL07180	SHAFT SEPARATION	4
	303LL02340	3LL02340	STAY BASE	2	⊙	303LL07190	3LL07190	PULLEY SEPARATION	4
	303LL02350	3LL02350	CLOSED BUSHING A	8		303LL07210	3LL07210	LOWER GUIDE PF	4
	303LL02370	3LL02370	PLATE SCREW	2		303LL07220	3LL07220	GUIDE LIFT PF	4
	303LL02380	3LL02380	PLATE GUIDE HINGE	9		303LL07230	3LL07230	FRONT PLATE LIFT	4
	303LL02390	3LL02390	PUSH SW	2		303LL07240	3LL07240	REAR PLATE LIFT	4
	303LL02410	3LL02410	MOUNT CUSHION	2		303LL07250	3LL07250	LIFT PLATE PF	4
	303LL02420	3LL02420	CUSHION ORIGINAL MAT	2	⊙	303LL07260	3LL07260	LEVER LIFT	4
	303LL02430	3LL02430	SPRING PUSH MAT	2		303LL07270	3LL07270	SPRING LIFT	4
	303LL02440	3LL02440	MOUNT PWB	8	⊙	303LL07280	3LL07280	ACTUATOR SET	6
	303LL02460	3LL02460	HOLDER WIRE E	8		303LL07300	3LL07300	LEFT GUIDE PF	6
	303LL02470	3LL02470	GROUND TIMING SW	2		303LL07320	3LL07320	MOUNT INTERLOCK SW	8
	303LL02480	3LL02480	SEAL WIRE	2,4		303LL07330	3LL07330	GUIDE PF SHAFT	6
	303LL02490	3LL02490	PIN PF COVER FRONT	6		303LL07340	3LL07340	SPACER PF ROLLER	6
	303LL02510	3LL02510	SHEET BASE	2		303LL07360	3LL07360	MOUNT LED	6
	303LL02520	3LL02520	GROUND PLATE HINGE	2		303LL07400	3LL07400	GROUND PLATE FEED SW	6
⊙	303LL04010	3LL04010	COVER FRONT	1		303LL07410	3LL07410	SPRING GND	6
⊙	303LL04020	3LL04020	COVER REAR	1		303LL07420	3LL07420	SPRING HOOK	6
⊙	303LL04030	3LL04030	COVER PF	6		303LL07430	3LL07430	STRAP PF A	6
⊙	303LL04040	3LL04040	LID REAR COVER	1		303LL07450	3LL07450	GUIDE STRAP	7
⊙	303LL04050	3LL04050	HANDLE DP	1		303LL07470	3LL07470	SPRING PF	6
⊙	303LL04060	3LL04060	STOPPER EJECT ORIGINAL	1	⊙	303LL07480	3LL07480	FILM SEPARATION	4
⊙	303LL04070	3LL04070	COVER BOTTOM	2	⊙	303LL07490	3LL07490	BELT LF	6
⊙	303LL04080	3LL04080	COVER FRONT B	1		303LL07500	3LL07500	STAY PF LEVER	6
⊙	303LL04091	3LL04091	COVER LED	6		303LL07510	3LL07510	PLATE LEFT GUIDE	6
⊙	303LL04100	3LL04100	COVER BOTTOM RIGHT	2		303LL24010	3LL24010	GUIDE READING	4
⊙	303LL04110	3LL04110	COVER BOTTOM REAR	2		303LL24060	3LL24060	STAY CONVEYING LOWER	2
⊙	303LL04120	3LL04120	COVER FRAME REAR	8		303LL24070	3LL24070	STAY CONVEYING UPPER	5
⊙	303LL06010	3LL06010	BASE TABLE	3		303LL24080	3LL24080	GUIDE CONVEYING UPPER	5
⊙	303LL06020	3LL06020	COVER TABLE	3		303LL24090	3LL24090	GUIDE CONVEYING LOW	4
⊙	303LL06030	3LL06030	FRONT CURSOR	3		303LL24100	3LL24100	HOLDER LEFT PULLEY	2
⊙	303LL06040	3LL06040	REAR CURSOR	3		303LL24110	3LL24110	HOLDER RIGHT PULLEY	2
⊙	303LL06050	3LL06050	COVER CURSOR	3		303LL24120	3LL24120	SPRING PULLEY CONV LEFT	2
⊙	303LL06060	3LL06060	BUSH TABLE	3		303LL24130	3LL24130	SPRING PULLEY CONV R	2
⊙	303LL06070	3LL06070	SUB TABLE	3		303LL24140	3LL24140	SPRING READING GUIDE	4
	303LL06090	3LL06090	MOUNT ORIGINAL SENSOR	3		303LL24160	3LL24160	GUIDE RIGHT READING	2
	303LL06100	3LL06100	COVER TABLE WIRE	3		303LL24170	3LL24170	GUIDE CONVEYING MID	2
⊙	303LL06110	3LL06110	STRAP TABLE	3		303LL24180	3LL24180	SHAFT GUIDE READING	4
⊙	303LL07010	3LL07010	RIGHT GUIDE PF	6	⊙	303LL24190	3LL24190	PULLEY GUIDE READING	4
⊙	303LL07020	3LL07020	HANDLE PF COVER	6		303LL24200	3LL24200	MOUNT READING SW	2
	303LL07040	3LL07040	FRONT PLATE UPPER GUIDE	6		303LL24210	3LL24210	MOUNT RIGHT PULLEY	2

• Parts with "⊙" indicate regular maintenance parts.

	Part.No.	Alternative.	Description	Fig.No.
	303LL24220	3LL24220	HOLDER READ PULLEY	4
	303LL24230	3LL24230	SPRING READING PULLEY	4
	303LL24240	3LL24240	COVER FRONT FRAME	5
	303LL24250	3LL24250	PIN READING GUIDE	4
	303LL24260	3LL24260	GROUND MOUNT R PULLEY	2
	303LL29030	3LL29030	STAY LOOP SHIFT	7
	303LL29040	3LL29040	GUIDE LOOP SHIFT	7
	303LL29050	3LL29050	GUIDE EJECT SHIFT	7
	303LL29060	3LL29060	GUIDE UPPER SHIFT	7
	303LL29070	3LL29070	GUIDE LOOP REMOVE A	7
	303LL29080	3LL29080	GUIDE LOOP REMOVE B	7
	303LL29090	3LL29090	UPPER GUIDE LOOP	7
	303LL29100	3LL29100	LOWER GUIDE LOOP	7
	303LL29110	3LL29110	FRONT HOLDER LOOP SHIFT	7
	303LL29120	3LL29120	REAR HOLDER LOOP SHIFT	7
	303LL29130	3LL29130	SHAFT LOOP PRESSURE	7
	303LL29140	3LL29140	LEVER LOOP PRESSURE	7
	303LL29150	3LL29150	HOLDER LOOP PULLEY	7
	303LL29170	3LL29170	MOUNT SHIFT SOLENOID	8
	303LL29180	3LL29180	HOLDER SHIFT PULLEY	7
	303LL29190	3LL29190	SHAFT SHIFT PULLEY	7
	303LL29200	3LL29200	SHAFT EJECT PULLEY	7
	303LL29210	3LL29210	SPRING SHIFT GUIDE	7
	303LL29220	3LL29220	GROUND PLATE SHIFT	7
⊙	303LL29230	3LL29230	LEVER UPPER SHIFT	7
	303LL29240	3LL29240	GROUND PLATE EJECT	7
	303LL29260	3LL29260	SPRING SHIFT SOLENOID	7
	303LL29270	3LL29270	SPRING SHIFT SOL B	8
	303LL29280	3LL29280	HANDLE JAM GUIDE	7
	303LL29290	3LL29290	SPRING LOOP SOL	8
	303LL29300	3LL29300	FILM SHIFT GUIDE	7
	303LL31010	3LL31010	MOUNT LOOP DRIVE	8
	303LL31020	3LL31020	MOUNT LOOP SOLENOID	8
⊙	303LL31030	3LL31030	PULLEY 21/20 LOOP	8
⊙	303LL31040	3LL31040	BELT LOOP ROLLER	8
⊙	303LL31050	3LL31050	PULLEY 20/25 SHIFT	7
⊙	303LL31060	3LL31060	BELT SHIFT ROLLER	4
⊙	303LL31070	3LL31070	BELT EJECT ROLLER	7
	303LL31080	3LL31080	MOUNT JAM DIAL	4
⊙	303LL31090	3LL31090	GEAR Z41R PF	8
⊙	303LL31100	3LL31100	GEAR Z20L PF	8
	303LL31110	3LL31110	MOUNT PF DRIVE	8
	303LL31120	3LL31120	PLATE PF DRIVE	8
⊙	303LL31130	3LL31130	GEAR Z20R SEPARATION	4
⊙	303LL31140	3LL31140	GEAR Z35L PF	8
⊙	303LL31150	3LL31150	GEAR Z40L Z18L ONEWAY	8
⊙	303LL31160	3LL31160	GEAR Z23R PF	8
⊙	303LL31170	3LL31170	GEAR Z18L PF	8
⊙	303LL31180	3LL31180	GEAR Z23R PF	6
⊙	303LL31190	3LL31190	GEAR Z25L REGISTRATION	4

	Part.No.	Alternative.	Description	Fig.No.
	303LL31200	3LL31200	SHAFT A PF DRIVE	8
	303LL31210	3LL31210	MOUNT LIFT DRIVE	8
	303LL31220	3LL31220	COVER LIFT DRIVE	8
⊙	303LL31260	3LL31260	GEAR Z32S LIFT	8
	303LL31280	3LL31280	SHAFT CAM LIFT	8
	303LL31290	3LL31290	SHAFT B PF DRIVE	8
	303LL31300	3LL31300	MOUNT CONV DRIVE	8
⊙	303LL31310	3LL31310	BELT CONVEYING F	4
⊙	303LL31320	3LL31320	BELT CONVEYING R	4
⊙	303LL31330	3LL31330	PULLEY 38 CONVEYING	4
⊙	303LL31340	3LL31340	PULLEY 20 CONVEYING	4
	303LL31380	3LL31380	PLATE TENSION CONV	4
	303LL31390	3LL31390	SPRING TENSION CONV	4
⊙	303LL31440	3LL31440	GEAR Z27R ONEWAY	8
	303LL31460	3LL31460	MOUNT MOTOR PF	8
	303LL31470	3LL31470	CAM LIFT	8
	303LL31490	3LL31490	DIAL JAM REMOVALMENT	4
⊙	303LL31500	3LL31500	GEAR EJECT 25	7
⊙	303LL31510	3LL31510	PULLEY LOOP 20	7
	303LL31530	3LL31530	SPRING C MOTOR	8
	303LL31540	3LL31540	MOUNT LIFT MOTOR	8
⊙	303LL31550	3LL31550	PULLEY LOOP IDLE	7
⊙	303LL34010	3LL34010	LABEL SIZE DIRECTION METRIC	6
⊙	303LL34020	3LL34020	LABEL SIZE DIRECTION INCH	6
⊙	303LL34050	3LL34050	LABEL CAUTION	1
⊙	303LL34070	3LL34070	LABEL JAM DIAL	1
⊙	303LL34090	3LL34090	LABEL CAUTION A ENG	6
⊙	303LL34100	3LL34100	LABEL ORIGINAL MAX	3
⊙	303LL34110	3LL34110	LABEL C	1
⊙	303LL34130	3LL34130	LABEL CAUTION B INCH	3
⊙	303LL34140	3LL34140	LABEL CAUTION B CENTI	3
	303LL34170	3LL34170	LABEL CAUTION AB CENTI 7 NATIONS	9
	303LL34180	3LL34180	LABEL CAUTION AB INCH 3 NATIONS	9
	303LL34190	3LL34190	LABEL FACE UP 7NATIONS	9
	303LL46010	3LL46010	WIRE INTERFACE	8
	303LL46020	3LL46020	WIRE FEED COVER	6
	303LL46030	3LL46030	WIRE MOTOR	8
	303LL46040	3LL46040	WIRE TABLE	3
	303LL46050	3LL46050	WIRE EJECT	4
	303LL46070	3LL46070	WIRE SOLENOID	2
	303LL46080	3LL46080	WIRE OPENSOW	2
	303LL46090	3LL46090	WIRE TMGSW	2
	303LL46100	3LL46100	WIRE EJECTSW	7
⊙	303LL94010	3LL94010	PARTS DRIVER PWB ASSY SP	8
⊙	303LL94020	3LL94020	PARTS LED PWB ASSY SP	6
⊙	303LL94030	3LL94030	PARTS MAT ASSY	1
⊙	303LL94050	3LL94050	PARTS TABLE ASSY A	3
⊙	303LL94060	3LL94060	PARTS ROLLER CONVEYING LEFT	4
⊙	303LL94070	3LL94070	PARTS ROLLER CONVEYING RIGHT	4
⊙	303LL94080	3LL94080	PARTS ROLLER CONVEYING UPPER	4

• Parts with "⊙" indicate regular maintenance parts.

	Part.No.	Alternative.	Description	Fig.No.
⊙	303LL94090	3LL94090	PARTS ROLLER REGISTRATION	4
⊙	303LL94100	3LL94100	PARTS ROLLER EJECT	7
⊙	303LL94110	3LL94110	PARTS ROLLER LOOP	7
⊙	303LL94120	3LL94120	PARTS ROLLER EJECT SHIFT	7
⊙	303LL94130	3LL94130	PARTS MOTOR DP	8
⊙	303LL94140	3LL94140	PARTS SOLENOID LOOP	8
⊙	303LL94150	3LL94150	PARTS SOLENOID SHIFT	8
⊙	303LL94160	3LL94160	PARTS SENSOR ORIGINAL 4P	3
⊙	303LL94170	3LL94170	PARTS TABLE ASSY E	3
	3CY07080	3CY07080	BUSHING 6	4,5,6,7,8
	3H602250	3H602250	CUSHION RUBBER	2
⊙	3H607020	3H607020	PULLEY LF	6
	3H607030	3H607030	COLLAR PF A	6
	3H607040	3H607040	COLLAR PF B	6
	3H607130	3H607130	BUSHING PF HOLDER	6
	3H607240	3H607240	GUIDE PF SPRING	6
	3H608150	3H608150	SHAFT C PULLEY	2,4,6,7
⊙	3H608200	3H608200	PULLEY CONVEYING	6
	3H608230	3H608230	SPRING C PULLEY	6
	3H622270	3H622270	SPRING C MOTOR	8
⊙	3H627230	3H627230	MOTOR LIFT	8
	3HL06090	3HL06090	CUSHION CURSOR	3
⊙	3HL06110	3HL06110	TERMINAL PAPER SIZE	3
	3HL07240	3HL07240	SPRING HOOK	7
⊙	3HL08080	3HL08080	PULLEY CONVEYING	2,4,7
	3HL10120	3HL10120	SPRING,EJECT PULLEY	7
⊙	3HL10140	3HL10140	PULLEY LOOP	7
	5MVL177DN001	2FB06810	RING STOPPER 4	4
	5MVX111DN003	2A806250	RING STOPPER /A-49 FEED A4	2,4,5,6,7,8,9
	75714210	75714210	COLLAR DEVELOPING UNIT	4,7
	7YZM110001++H01	YZ009420	ACCESS.BUSHING	4
	7YZM210001++H01	YZ004370	ACCESS.EDGING	8
	7YZM390011++H01	YZ050250	ACCESS.CLAMP	2
	7YZM610007++H01	YZ023340	ACCESS.SADDLE	5,8
	7YZM610008++H01	YZ037940	ACCESS.SADDLE	4,8
	7YZM610021++H01	YZ068620	ACCESS.SADDLE	8
	7ZGSSTG1R205H01	ZG111410	SHIELD GASKET	9
	M2108000	49628603	SPACER,KGLS-3S	5
	M21AH010	M21AH010	BAND,RSG-130-V0(KITAGAWA)	8
	M7005010	M7005010	CLAMP,EMT-3N(TAKEUCHI)	5
	M70AF010	M70AF010	CLAMP,LCT-1.5SIEM(TAKEUCHI)	5

• Parts with "⊙" indicate regular maintenance parts.

KYOCERA MITA EUROPE B.V.

Hoeksteen 40, 2132 MS Hoofddorp,
The Netherlands
Phone: +31.20.654.0000
Home page: <http://www.kyoceramita-europe.com>
Email: info@kyoceramita-europe.com

KYOCERA MITA NEDERLAND B.V.
Beechavenue 25, 1119RA Schiphol-Rijk
The Netherlands
Phone: +31.20.58.77.200

KYOCERA MITA (UK) LTD
8 Beacontree Plaza
Gillette Way Reading Berks RG2 0BS,
U.K.
Phone: +44.1189.311.500

KYOCERA MITA ITALIA S.p.A.
Via G. Verdi, 89 / 91, 20063 Cernusco s/N
Milano, Italy
Phone: +39.02.92179.1

S.A. KYOCERA MITA BELGIUM N.V.
Hermestraat 8A, 1930 Zaventem,
Belgium
Phone: +32.2.720.9270

KYOCERA MITA FRANCE S.A.
Parc Les Algorithmes Saint Aubin
91194 GIF-SUR-YVETTE,
France
Phone: +33.1.6985.2600

KYOCERA MITA ESPAÑA S.A.
Edificio Kyocera, Avda de Manacor No. 2,
28290 Las Matas (Madrid),
Spain
Phone: +34.91.631.8392

KYOCERA MITA FINLAND OY
Kirvesmiehenkatu 4, 00880 Helsinki,
Finland
Phone: +358.9.4780.5200

KYOCERA MITA (SCHWEIZ)
Hohlstrasse 614, 8048 Zürich
Switzerland
Phone: +41.1.908.4949

KYOCERA MITA DEUTSCHLAND GMBH
Otto-Hahn-Str. 12 D-40670 Meerbusch,
Germany
Phone: +49.2159.918.0

KYOCERA MITA GMBH AUSTRIA
Eduard-Kittenberger-Gasse 95,
1230 Wien,
Austria
Phone: +43.1.86338.210

KYOCERA MITA SVENSKA AB
Esbogatan 16B 164 75 Kista,
Sweden
Phone: +46.8.546.55000

KYOCERA MITA NORGE
Postboks 150 Oppsal, NO 0619 Oslo
Olaf Helsetsvei 6, NO 0694 Oslo,
Norway
Phone: +47.22.62.73.00

KYOCERA MITA DANMARK A/S
Ejby Industrivej 1, DK-2600 Glostrup,
Denmark
Phone: +45.5687.1100

KYOCERA MITA PORTUGAL LDA.
Rua do Centro Cultural, 41 (Alvalade) 1700-106 Lisbon,
Portugal
Phone: +351.21.842.9100

KYOCERA MITA SOUTH AFRICA (PTY) LTD.
527 Kyalami Boulevard,
Kyalami Business Park Midrand,
South Africa
Phone: +27.(0)11.540.2600

KYOCERA MITA AMERICA, INC.

Headquarters:
225 Sand Road,
Fairfield, New Jersey 07004-0008,
U.S.A.
Phone: (973) 808-8444

KYOCERA MITA AUSTRALIA PTY. LTD.
Level 3, 6-10 Talavera Road, North Ryde,
N.S.W. 2113 Australia
Phone: (02) 9888-9999

KYOCERA MITA NEW ZEALAND LTD.
1-3 Parkhead Place, Albany
P.O. Box 302 125 NHPC, Auckland,
New Zealand
Phone: (09) 415-4517

KYOCERA MITA (THAILAND) CORP., LTD.
9/209 Ratchada-Prachachem Road,
Bang Sue, Bangkok 10800, Thailand
Phone: (02) 586-0320

KYOCERA MITA SINGAPORE PTE LTD.
121 Genting Lane, 3rd Level,
Singapore 349572
Phone: 67418733

KYOCERA MITA HONG KONG LIMITED
11/F., Mita Centre,
552-566, Castle Peak Road,
Tsuen Wan, New Territories,
Hong Kong
Phone: 24297422

KYOCERA MITA TAIWAN Corporation.
7F-1~2, No.41, Lane 221, Gangchi Rd.
Neihu District, Taipei, Taiwan, 114. R.O.C.
Phone: (02) 87511560

KYOCERA MITA Corporation

2-28, 1-chome, Tamatsukuri, Chuo-ku
Osaka 540-8585, Japan
Phone: (06) 6764-3555
<http://www.kyoceramita.com>



KYOCERA MITA AMERICA, INC.

Headquarters:

225 Sand Road,
Fairfield, New Jersey 07004-0008
TEL : (973) 808-8444
FAX : (973) 882-6000

New York Branch:

1410 Broadway 23rd floor
New York, NY 10018
TEL : (917) 286-5400
FAX : (917) 286-5402

Northeastern Region:

225 Sand Road,
Fairfield, New Jersey 07004-0008
TEL : (973) 808-8444
FAX : (973) 882-4401

Midwestern Region:

201 Hansen Court Suite 119
Wood Dale, Illinois 60191
TEL : (630) 238-9982
FAX : (630) 238-9487

Western Region:

14101 Alton Parkway,
Irvine, California 92618-7006
TEL : (949) 457-9000
FAX : (949) 457-9119

Southeastern Region:

1500 Oakbrook Drive,
Norcross, Georgia 30093
TEL : (770) 729-9786
FAX : (770) 729-9873

Southwestern Region:

2825 West Story Road,
Irving, Texas 75038-5299
TEL : (972) 550-8987
FAX : (972) 252-9786

National Operation Center & National Training Center:

2825 West Story Road,
Irving, Texas 75038-5299
TEL : (972) 659-0055
FAX : (972) 570-5816

Latin America Division:

8240 N.W. 52nd. Terrace Dawson Building,
Suite 108 Miami, Florida 33166
TEL : (305) 421-6640
FAX : (305) 421-6666

KYOCERA MITA CANADA, LTD.

6120 Kestrel Road, Mississauga,
Ontario L5T 1S8, Canada
TEL : (905) 670-4425
FAX : (905) 670-8116

KYOCERA MITA MEXICO, S.A. DE C.V.

Av. 16 de Septiembre #407
Col. Santa Inés,
Azcapotzalco México,
D.F. 02130, México
TEL : (55) 5383-2741
FAX : (55) 5383-7804

©2008 KYOCERA MITA Corporation

<http://www.kyoceramita.com>

 **KYOCERA** is a trademark of Kyocera Corporation

Printed in U.S.A.

