



FS-1016MFP

PARTS LIST

Published in June 2006

2G4PL071

842G4121

KMIS-Rev.1

NOTES

1. Indicate parts number and machine model when placing an order.

e.g.	Parts Number	Parts Name	Machine Model	Frequency	Quantity
	302G404020	COVER LID	FS-1016MFP	50Hz / 60Hz	1

2. Service calls and freight will be charged separately.

3. Symbols in the "Parts Number" column.

- Parts with "•" are component parts or sub-assemblies of the assembly appearing immediately above them.

e.g.	Parts Number	Parts Name	Parts Number	Parts Name
	302FV93081	CT-110	•2DC07010	STOPPER PAPER
			•2DC07020	POSITIONING FOLIO PAPER

- Parts with "••" are component parts or sub-assembly with "•" appearing immediately above them.

e.g.	Parts Number	Parts Name	Parts Number	Parts Name
	•302G470030	UNIT HOUSING BOTTOM	••302G470040	UNIT BELT
			••302G470190	BUTTON, RELEASE

- Parts with "⊙" indicates the spare parts and the parts without "⊙" can not be supplied.

CONTENTS

FIG. 1	Covers	2
FIG. 2	Frames I	4
FIG. 3	Frames II	6
FIG. 4	Paper Cassette	8
FIG. 5	Driving Unit	10
FIG. 6	Imaging Unit	12
FIG. 7	Developer Unit	14
FIG. 8	Fuser Unit	16
FIG. 9	MFP Unit	18
FIG. 10	Accessories & Parts Package	20
	• INDEX	22

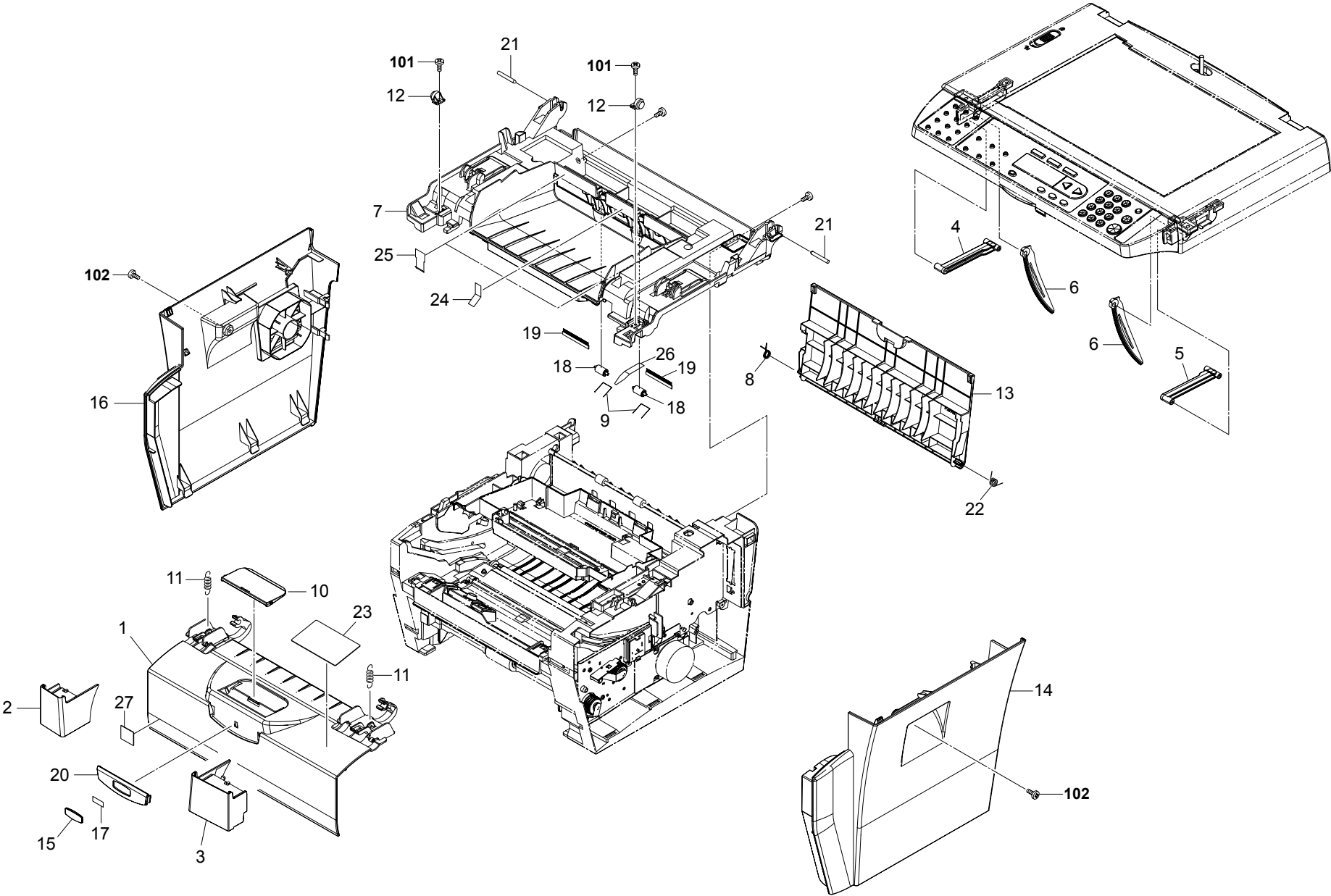


FIG. 1 Covers

2G4-1

SP	Ref. No.	Part.No.	Alternative.	Description	Quantity		
					120	230	240
⊙	1	302G404020	2G404020	COVER LID	1	1	1
	2	302G404070	2G404070	ARM LID L	1	1	1
	3	302G404080	2G404080	ARM LID R	1	1	1
	4	302G404090	2G404090	LINK LIFT L	1	1	1
	5	302G404100	2G404100	LINK LIFT R	1	1	1
	6	302G404110	2G404110	GEAR ARM DAMPING	2	2	2
	7	302G404010	2G404010	COVER TOP PRINTER	1	1	1
	8	5MMW126SD001	2FV04130	SPRING COVER REAR	1	1	1
	9	302G404060	2G404060	SPRING PULLEY FD	2	2	2
	10	302G404050	2G404050	TRAY SUBTRAY	1	1	1
	11	302G404150	2G404150	SPRING ARM	2	2	2
	12	302G404160	2G404160	DAMPER	2	2	2
	13	5MVB874SB011	2FV04060	COVER REAR	1	1	1
	14	302G404040	2G404040	COVER SIDE R	1	1	1
	15	302F904120	2F904120	EMBLEM KYOCERA	1	1	1
	16	302G404030	2G404030	COVER SIDE L	1	1	1
	17	302F904130	2F904130	TAPE EMBLEM	1	1	1
	18	5MVM363DB001	2FV04150	PULLEY FD	2	2	2
	19	5MVS625XF001	2FV04140	DISCHARGER FD	2	2	2
	20	302G404140	2G404140	PLATE LOGOTYPE	1	1	1
	21	302G404130	2G404130	PIN PIVOT OD=4 L=20	2	2	2
	22	302FV04200	2FV04200	SPRING COVER REAR R	1	1	1
	23	302G404380	2G404380	LABEL LID OPERATION	1	1	1
	24	302G404450	2G404450	SHEET FD	1		
	25	302G404460	2G404460	SHEET GUIDE SIDE	2		
	26	302G404470	2G404470	SHEET GUIDE TOP	1		
	27	302G634070	2G634070	LABEL ENERGY STAR	1	1	1
SP	Ref. No.	Part.No.	Alternative.	Description	Quantity		
					120	230	240
	101	5MBTPB3008PW++R	B1A63080	BIND T.T SCREW(+)/ M3 X 8			
	102	5MBTPB3012PW++R	B1A63120	BIND T.T SCREW(+)/ M3 X 12 CRFREE P-T			

- Parts with "•" are component parts or sub-assemblies of the assembly appearing immediately above them.
- Parts with "⊙" indicates the spare parts.

- Parts with "••" are component parts or sub-assembly with "•" appearing immediately above them.

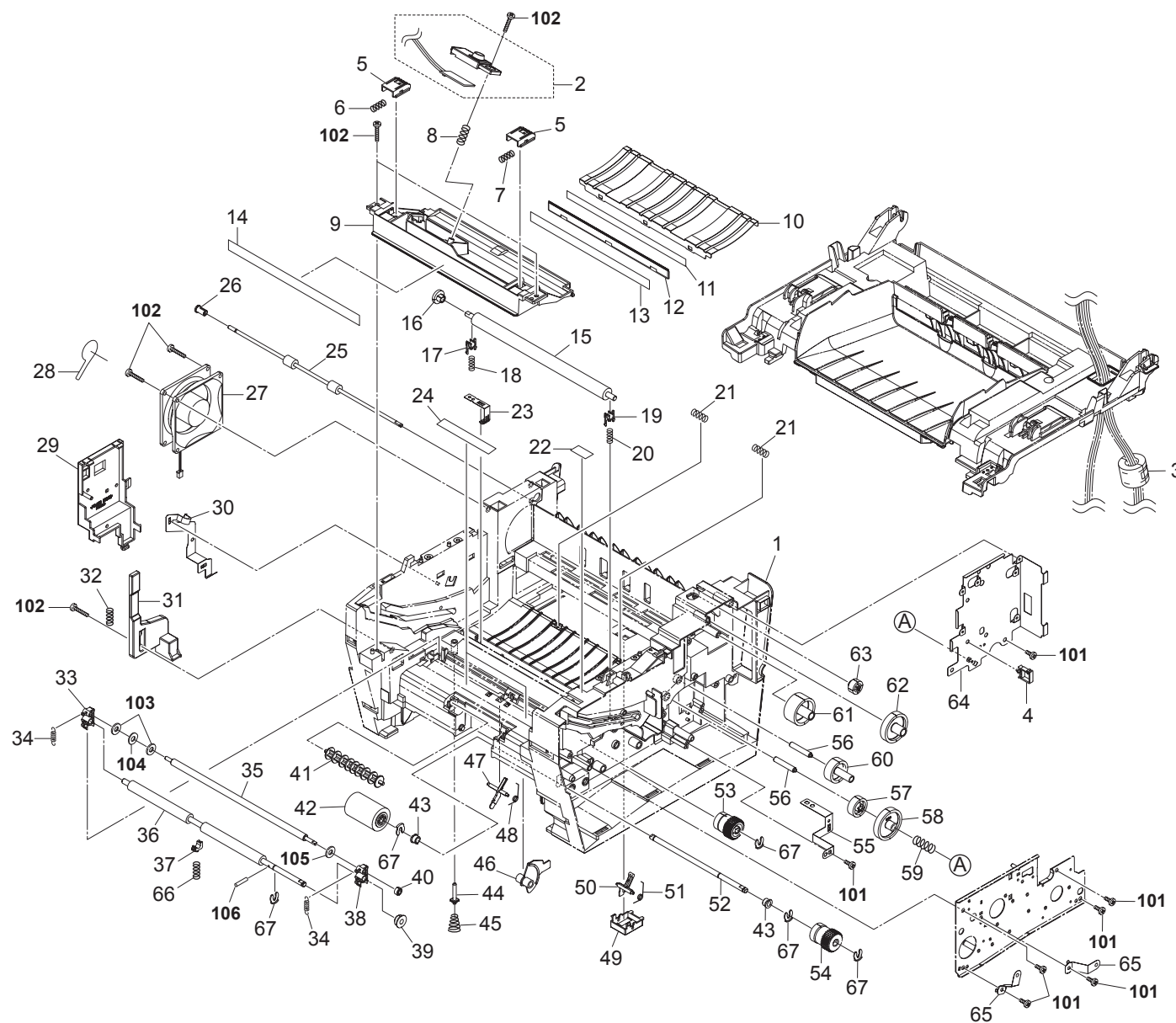


FIG. 2 Frames I

2G4-1

SP	Ref. No.	Part.No.	Alternative.	Description	Quantity		
					120	230	240
⊙	1	5MVX888CB001	2FV02170	FRAME BASE	1	1	1
	2	302FV00030	2FV00030	TE SENSOR ASSY	1	1	1
	3	M70CA010		FERRITE CORE,SFT-72SN(TAKEUCHI)	1	1	1
	4	7YZM610003++H01	YZ010250	ACCESS SADDLE	1	1	1
	5	5MVX431DN005	2FV02100	LEVER LOCK DLP	2	2	2
	6	5MMW261LD067	2FV02270	SPRING LEVER LOCK L	1	1	1
	7	5MMW261LD068	2FV02280	SPRING LEVER LOCK R	1	1	1
	8	5MMW261LD036	2A814570	SPRING TE SENSOR	1	1	1
	9	5MVX865SB008	2FV02160	GUIDE FEED	1	1	1
	10	5MMU862SL001	2FV02250	PLATE EARTH GUIDE	1	1	1
	11	5MVS812XF003	2A816120	TAPE BRUSH	1	1	1
	12	5MMS821LD014	2A816080	BRUSH DISCHARGER	1	1	1
	13	5MVS812KF006	2A816090	SHEET DISCHARGER	1	1	1
	14	302G402030	2G402030	LABEL JAM OPERATION	1	1	1
⊙	15	5MMT876SN104	2FV02230	ROLLER TRANSFER	1	1	1
⊙	16	5MVG127DN131	2FV02030	GEAR TC Z17	1	1	1
⊙	17	5MVX221DB023	2A816020	BUSH TC L	1	1	1
⊙	18	302G622010	2G622010	SPRING TC L	1	1	1
⊙	19	5MVX221DW008	2A816030	BUSH TC R	1	1	1
⊙	20	302FV02490	2FV02490	SPRING TC R	1	1	1
	21	302FV02480	2FV02480	SPRING ROLL	2	2	2
	22	302FV14500	2FV14500	LABEL GUIDE DLP	1	1	1
	23	5MMX331LD005	2FV02330	PLATE CONTACT TC	1	1	1
⊙	24	5MVS721KF007	2FV02390	SHEET REGIST	2	2	2
	25	5MMT875SN016	2FV02220	ROLLER FD	1	1	1
	26	302FV02470	2FV02470	BUSH FD	1	1	1
⊙	27	302FV45010	2FV45010	FAN MOTOR	1	1	1
	28	302FV02500	2FV02500	SHEET FAN	1	1	1
	29	5MVB763CB001	2FV02010	COVER MC	1	1	1
	30	5MMX763LD007	2FV02370	PLATE CONTACT MC	1	1	1
	31	5MVX763SB011	2FV02150	ROD INTERLOCK	1	1	1
	32	5MMW451LD001	2B700570	SPRING INTERLOCK	1	1	1
⊙	33	5MVX221DB019	2A806420	BUSH REGIST LEFT	1	1	1
⊙	34	5MMW261LD023	2A806410	SPRING REGIST R	2	2	2
	35	302A806051	2A806051	ROLLER REGIST UP	1	1	1
⊙	36	5MMT876SN105	2FV02240	ROLLER REGIST LOW	1	1	1
⊙	37	2FM02180	5MVX221DN020	BUSH REGIST C	1	1	1
⊙	38	5MVX221DW006	2A806430	BUSH REGIST RIGHT	1	1	1
⊙	39	5MVG127DB047	2A806230	GEAR REGIST Z20	1	1	1
⊙	40	5MVG126DB025	2A806240	GEAR REGIST Z13	1	1	1
⊙	41	5MVM776DB001	2FV02090	PULLEY FEED	1	1	1
⊙	42	5AAVR0LL+044	2A806010	ROLLER FEED ASSY	1	1	1
	43	5MVM176DN016	2BR20170	BUSH A	2	2	2
	44	5MMT365SN003	2A815020	PIN CONTACT BIAS	1	1	1
	45	5MMW361LD028	2FV02310	SPRING PIN BIAS	1	1	1
	46	5MVX552DB001	2FV02130	ACTUATOR EMPTY	1	1	1
⊙	47	5MVX441SB006	2FV02110	ACTUATOR REGIST	1	1	1
	48	5MMW261LD066	2FV02260	SPRING ACTUATOR	1	1	1
	49	5MVX432SB014	2FV02460	BKT ACTUATOR EXIT	1	1	1
⊙	50	5MVX442SB011	2FV02120	ACTUATOR EXIT	1	1	1

- Parts with "•" are component parts or sub-assemblies of the assembly appearing immediately above them.
- Parts with "⊙" indicates the spare parts.

SP	Ref. No.	Part.No.	Alternative.	Description	Quantity		
					120	230	240
	51	5MMW261LD069	2FV02290	SPRING EXIT	1	1	1
	52	5MMT766SN011	2FV02210	SHAFT FEED	1	1	1
⊙	53	5AAVCLTCH032	2FV02180	CLUTCH REGIST	1	1	1
⊙	54	5AAVCLTCH028	2BY02020	CLUTCH FEED	1	1	1
	55	5MMX643LD006	2FV02360	PLATE EARTH B	1	1	1
⊙	56	5MMT463SN002	2FV02200	PIN DRIVE	2	2	2
⊙	57	5MVG138DN088	2FV02040	GEAR FREE Z28S	1	1	1
⊙	58	5MVG158DN059	2FV02060	GEAR FREE Z46H	1	1	1
	59	5MMW371LD006	2FV02320	SPRING FREE	1	1	1
⊙	60	5MVG148DN107	2FV02050	GEAR Z34S	1	1	1
⊙	61	5MVG158DN060	2FV02070	GEAR FD Z42S	1	1	1
⊙	62	5MVG158DN061	2FV02080	GEAR FD Z45S	1	1	1
⊙	63	5MVG127DN130	2FV02020	GEAR FD Z19S	1	1	1
	64	302G439010	2G439010	LID CONTROLLER	1	1	1
	65	5MMX522LD013	2FV02340	PLATE EARTH FEED	2	2	2
	66	2FM02580	5MMW261LD064	SPRING REGIST C	1	1	1
	67	5MVX111DN003	2A806250	RING STOPPER	5	5	5
	101	5MBTPB4010WW	B8204100	BIND T.T SCREW(+)/ M4 X 10			
	102	B4B74100		+TP T.T SCREW(+)/ M4 X 10 CRFREE B-T			
	103	5MBWK41A03NN	C2891100	POLY-SLIDER WASHER 4.1X10X0.3T			
	104	5MBWW43802SP++R	C3790080	WAVE WASHER / M4X8.0X0.2T			
	105	5MBWK4165+NN	C2894650	POLY SLIDER / M4.1X6.5X0.25T			
	106	5MBP2008WWLD	E1120080	SPRING PIN / M2 X 8			

- Parts with "•" are component parts or sub-assembly with "•" appearing immediately above them.

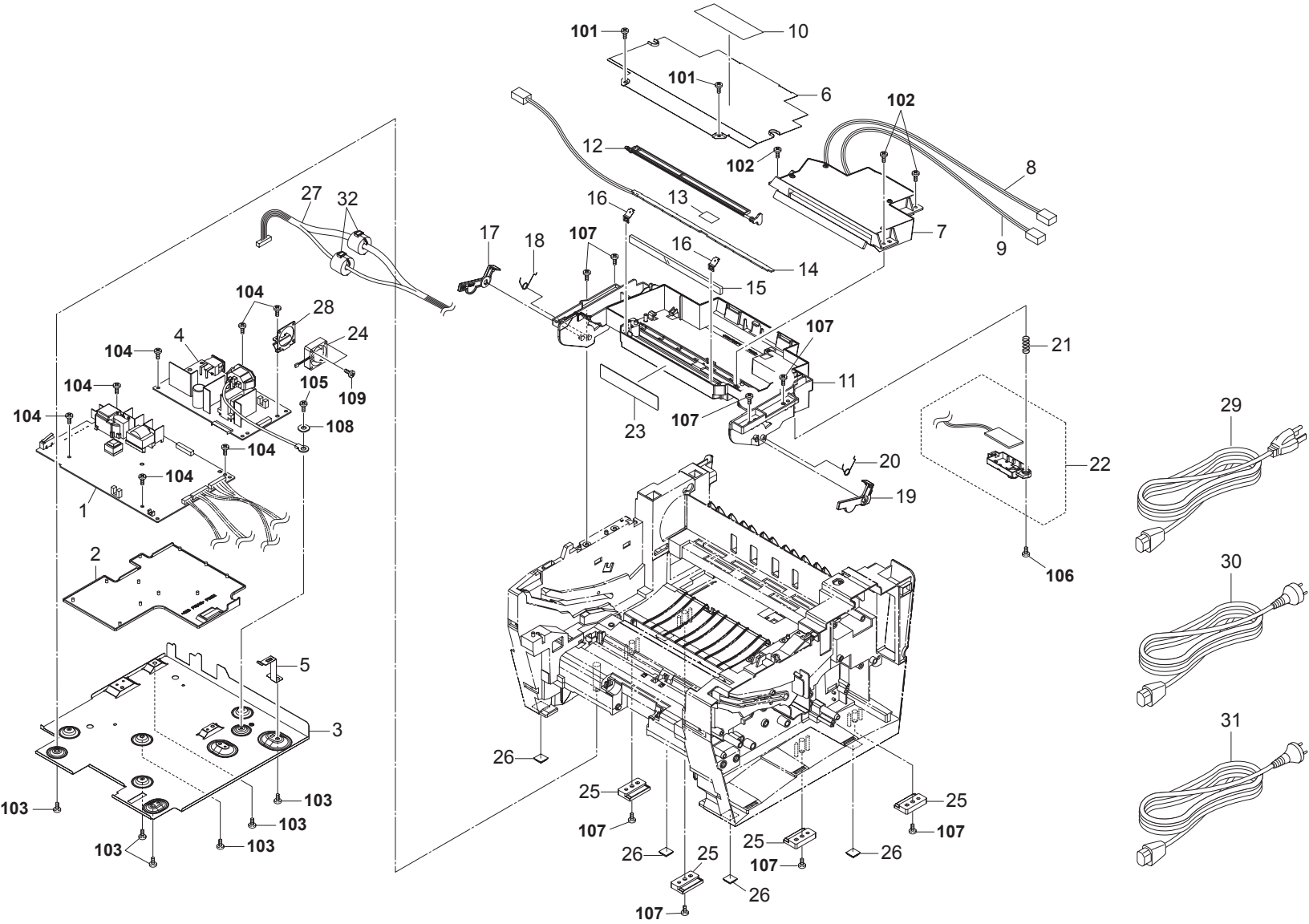


FIG. 3 Frames II

2G4-1

SP	Ref. No.	Part.No.	Alternative.	Description	Quantity		
					120	230	240
⊙	1	302G480010	2G480010	P.W.B ASSY ENGINE(SP)	1	1	1
	2	5MVS777CB001	2FV02000	COVER PWB	1	1	1
	3	5MMX884SL002	2FV02380	PLATE BOTTOM FRAME	1	1	1
⊙	4	302G445010	2G445010	UNIT LOW VOLTAGE 100	1		
⊙	4	302G445020	2G445020	UNIT LOW VOLTAGE 200		1	1
⊙	5	5MMX541LD002	2FV02350	PLATE EARTH A	1	1	
	6	5MMS875SL007	2FV12020	COVER SCANNER	1	1	1
	7	302FV93092	2FV93092	LK-110	1	1	1
⊙	8	302G446010	2G446010	CONN.CORD ASSY MAIN-LSU	1	1	1
	9	302FV26052	2FV26052	CONN CORD ASSY	1	1	1
	10	302FV12080	2FV12080	LABEL LASER CAUTION	1	1	1
⊙	11	5MVX876XB002	2FV12060	FRAME MID	1	1	1
	12	5MVX821SB014	2FV12050	SHUTTER LSU	1	1	1
	13	302FV12070	2FV12070	SHEET ERASER	1	1	1
⊙	14	5AAPRELC1008AHR	2FV01100	P.W.B.ASSY KP-5157	1	1	1
	15	2DC13030		MIRROR LSU	1	1	1
	16	5MMX221LD034	2FV12030	SPRING MIRROR	2	2	2
⊙	17	5MVX631SB006	2FV02420	LEVER STOPPER L	1	1	1
	18	5MMW165SD001	2FV02400	SPRING STOPPER L	1	1	1
	19	5MVX631SB007	2FV02430	LEVER STOPPER R	1	1	1
⊙	20	5MMW165SD002	2FV02410	SPRING STOPPER R	1	1	1
	21	5MMW261LD070	2FV12010	SPRING FULL SENSOR	1	1	1
	22	302FV00040	2FV00040	FULL SENSOR ASSY	1	1	1
⊙	23	302G402040	2G402040	LABE CONT OPERATION	1	1	1
	24	302G444020	2G444020	FAN MOTOR	1	1	1
	25	5MVX431SB012	2FV02450	RAIL FRAME	4	4	4
⊙	26	5MVX221RB014	2BS03110	FOOT	4	4	4
	27	302G446030	2G446030	CONN.CORD ASSY LVP-MAIN	1	1	1
	28	302G402010	2G402010	BRACKET FAN	1	1	1
⊙	29	2DC27410		AC CORD 120 ASSY	1		
	30	302FV45020	2FV45020	AC CORD ASSY		1	
	31	302FV45040	2FV45040	AC CORD ASSY			1
⊙	32	3HK27050		CORE 8-16X10	2	2	2

- Parts with "•" are component parts or sub-assemblies of the assembly appearing immediately above them.
- Parts with "⊙" indicates the spare parts.

SP	Ref. No.	Part.No.	Alternative.	Description	Quantity		
					120	230	240
101	5MBTPB3008PW++R	B1A63080		BIND T.T SCREW(+)/ M3 X 8			
	102	5MBTPB3012PW++R	B1A63120	BIND T.T SCREW(+)/ M3 X 12			
103	5MBTPB4010WW	B8204100		BIND T.T SCREW(+)/ M4 X 10			
	104	BAB53060	B1A53060	+TP TAP-TITE S SCREW M3X06			
105	5MBTPB4006TW++R	B1A54060		BIND T.T SCREW(+)/ M4 X 6			
	106	BAA63080		+TP TAP-TITE P SCREW M3X08			
107	B4B74100			+TP T.T SCREW(+)/ M4 X 10 CRFREE B-T			
	108	5MBWG40854LD	CP003020	OT.LOCK WASHER / M4X8.5X0.4T			
109	5MBTPB3014TW++R	B1A53140		BIND T.T SCREW(+)/ M3 X 14 CRFREE S-T			

- Parts with "••" are component parts or sub-assembly with "•" appearing immediately above them.

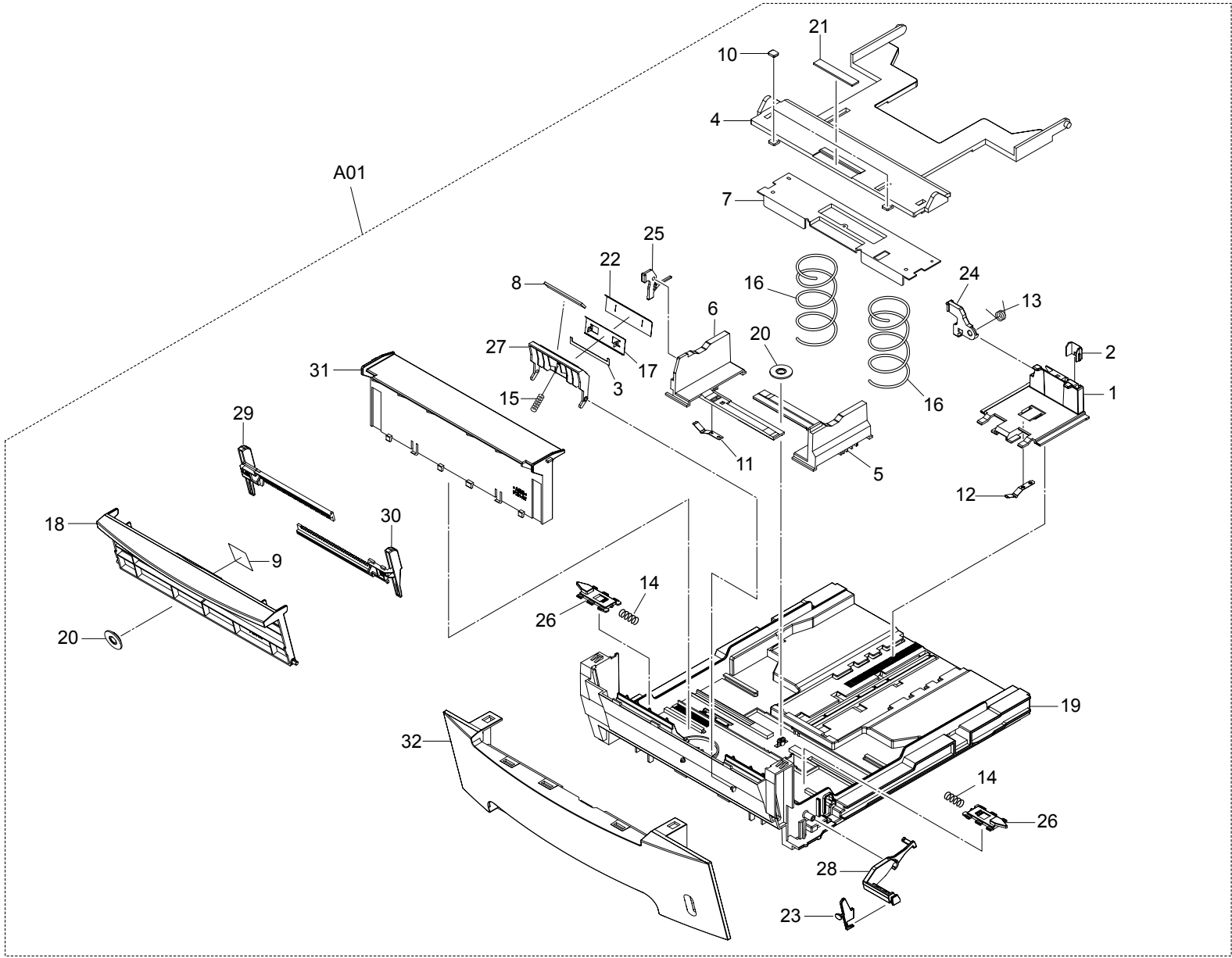


FIG. 4 Paper Cassette

SP	Ref. No.	Part.No.	Alternative.	Description	Quantity		
					120	230	240
⊙	A01	302FV93081	2FV93081	CT-110	1	1	1
	1	*2DC07010		STOPPER PAPER	1	1	1
	2	*2DC07020		POSITIONING FOLIO PAPER	1	1	1
	3	*2DC07040		FILM SEPARATOR	1	1	1
	4	*2FV06180		BOTTOM CASSETTE	1	1	1
	5	*302A807021	2A807021	GUIDE SIDE R	1	1	1
	6	*302A807031	2A807031	GUIDE SIDE L	1	1	1
	7	*302A807171	2A807171	PLATE BOTTOM	1	1	1
	8	*302FV06190	2FV06190	PAD SEPARATOR	1	1	1
	9	*302FV06210	2FV06210	LABEL MANUAL FEED	1	1	1
	10	*302FV06220	2FV06220	SEAL BOTTOM CASSETTE	2	2	2
	11	*5MMP141LD002	2A807510	PLATE SIDE GUIDE	1	1	1
	12	*5MMP141LD003	2A807520	PLATE STOPPER	1	1	1
	13	*5MMW171LD006	2A807530	SPRING STOPPER	1	1	1
	14	*5MMW251LD045	2A807140	SPRING LOCK	2	2	2
	15	*5MMW251LD047	2A807110	SPRING SEPARATOR C	1	1	1
	16	*5MMW552LD004	2FV06120	SPRING CASSETTE	2	2	2
	17	*5MMX631LD003	2A807180	GUIDE SEPARATOR	1	1	1
	18	*5MVB864SB024	2FV06100	TRAY MULTI	1	1	1
	19	*5MVB887SB002	2FV06010	BASE CASSETTE	1	1	1
	20	*5MVG127DN071	2A807050	GEAR CASSETTE	2	2	2
	21	*5MVS616XN001	2A807080	PAD BOTTOM	1	1	1
	22	*5MVS631TX001	3BW07040	TAPE SEPARATOR OP	1	1	1
	23	*5MVX321SG002	2FV06090	MARKER INDICATOR	1	1	1
	24	*5MVX541DG002	2A807191	LEVER REAR	1	1	1
	25	*5MVX541DG003	2A807161	LEVER SIDE	1	1	1
	26	*5MVX631DN001	2FV06030	LOCK CASSETTE	2	2	2
	27	*5MVX642SH010	2A807100	SEPARATOR PAPER	1	1	1
	28	*5MVX664SH005	2FV06070	LEVER PAPER INDICATOR	1	1	1
	29	*5MVX762SB019	2FV06040	GUIDE MULTI L	1	1	1
	30	*5MVX762SB020	2FV06050	GUIDE MULTI R	1	1	1
	31	*5MVX864SB013	2FV06060	GUIDE TURN	1	1	1
	32	*5MVX876SB010	2FV06020	COVER CASSETTE	1	1	1

- Parts with "•" are component parts or sub-assemblies of the assembly appearing immediately above them.
- Parts with "⊙" indicates the spare parts.

- Parts with "••" are component parts or sub-assembly with "•" appearing immediately above them.

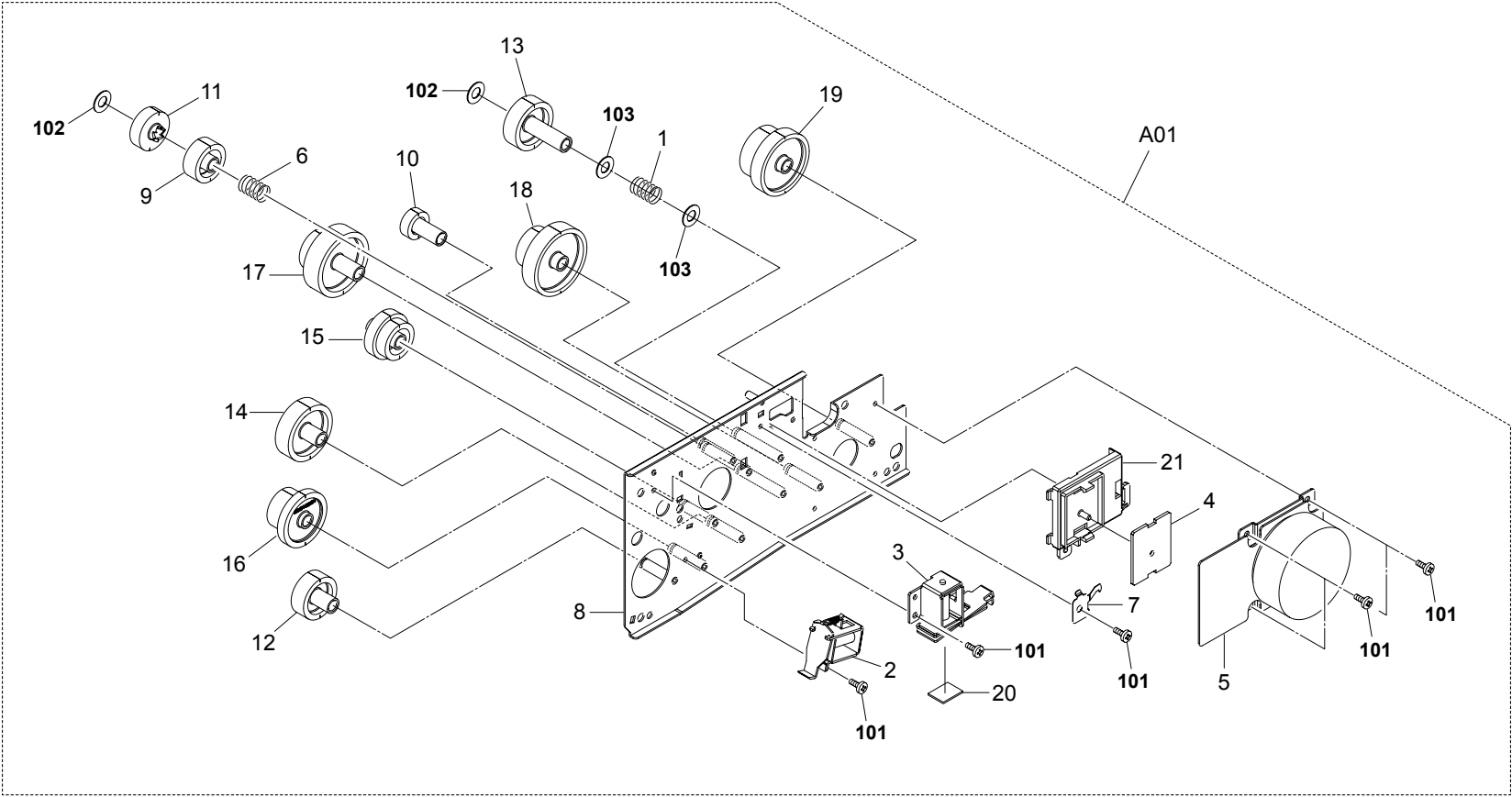


FIG. 5 Driving Unit

2G4-1

SP	Ref. No.	Part.No.	Alternative.	Description	Quantity		
					120	230	240
⊙	A01	302FV93061	2FV93061	DR-110	1	1	1
	1	*302FV22160	2FV22160	SPRING GEAR	1	1	1
⊙	2	*302GM44010	2GM44010	SOLENOID FEED	1	1	1
⊙	3	*302GM44020	2GM44020	SOLENOID REGIST	1	1	1
⊙	4	*5AAPRIFC1037AHR	2FV01080	P.W.B ASSY KP-1113	1	1	1
⊙	5	*5AAXMT074GEA	2FV27000	MOTOR MAIN	1	1	1
	6	*5MMW261LD071	2FV22010	SPRING REVERSE	1	1	1
	7	*5MMX321LD040	2FV22020	PLATE EARTH DRUM	1	1	1
	8	*5MMX874SL005	2FV22030	PLATE DRIVE	1	1	1
	9	*5MVG127DN132	2FV22040	GEAR FREE Z26H A	1	1	1
	10	*5MVG127DN133	2FV22050	GEAR Z18H	1	1	1
	11	*5MVG138DN089	2FV22060	GEAR FREE Z26H B	1	1	1
	12	*5MVG138DN090	2FV22070	GEAR Z29H	1	1	1
	13	*5MVG148DN108	2FV22080	GEAR Z33H	1	1	1
	14	*5MVG148DN109	2FV22090	GEAR Z39H	1	1	1
	15	*5MVG148DN110	2FV22100	GEAR Z31H-Z25H	1	1	1
	16	*5MVG148DN111	2FV22110	GEAR Z38H-Z26H	1	1	1
	17	*5MVG158DN062	2FV22120	GEAR Z45H-Z27H	1	1	1
	18	*5MVG168DN022	2FV22130	GEAR Z76H-Z27H	1	1	1
	19	*5MVG168DN023	2FV22140	GEAR Z70H-Z34H	1	1	1
	20	*5MVS217SN002	2A806280	PAD SOLENOID	1	1	1
	21	*5MVX652SB015	2FV22150	BRACKET DRIVE	1	1	1

SP	Ref. No.	Part.No.	Alternative.	Description	Quantity		
					120	230	240
	101	5MBTPB3006TW++R	B1A53060	BIND T.T SCREW(+)/ M3 X 6			
	102	5MBWL5280+NN	C2891080	POLY CUT WASHER / M5.2X8.0X0.25T			
	103	C2895950		SHIM 6.2-1.0T			

- Parts with "•" are component parts or sub-assemblies of the assembly appearing immediately above them.
- Parts with "⊙" indicates the spare parts.

- Parts with "••" are component parts or sub-assembly with "•" appearing immediately above them.

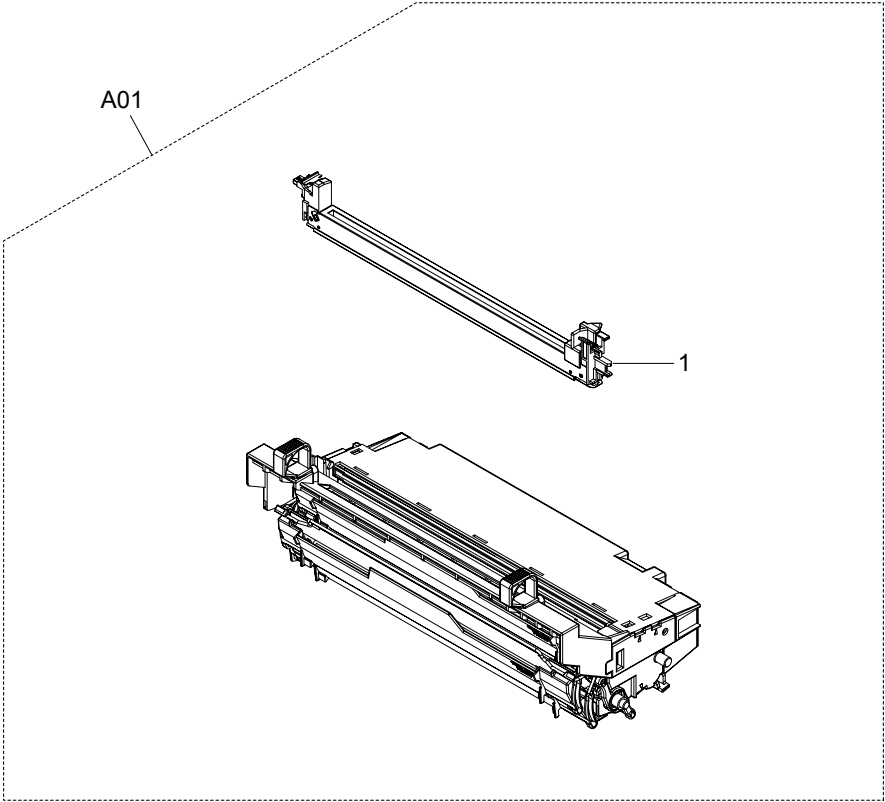


FIG. 6 Imaging Unit

2G4-1

SP	Ref. No.	Part.No.	Alternative.	Description	Quantity		
					120	230	240
⊙	A01	302FV93012	2FV93012	DK-110	1	1	1
⊙	1	•302FV93070	2FV93070	MC-110	1	1	1

- Parts with "•" are component parts or sub-assemblies of the assembly appearing immediately above them.
- Parts with "⊙" indicates the spare parts.

- Parts with "•" are component parts or sub-assembly with "•" appearing immediately above them.

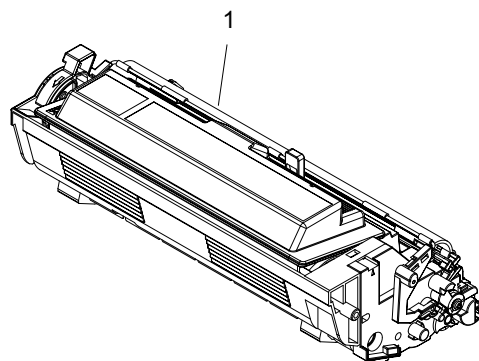


FIG. 7 Developer Unit

2G4-1

SP	Ref. No.	Part.No.	Alternative.	Description	Quantity		
					120	230	240
⊙	1	302FV93020	2FV93020	DV-110		1	1
⊙	1	302FV93030	2FV93030	DV-112	1		

- Parts with "•" are component parts or sub-assemblies of the assembly appearing immediately above them.
- Parts with "⊙" indicates the spare parts.

- Parts with "••" are component parts or sub-assembly with "•" appearing immediately above them.

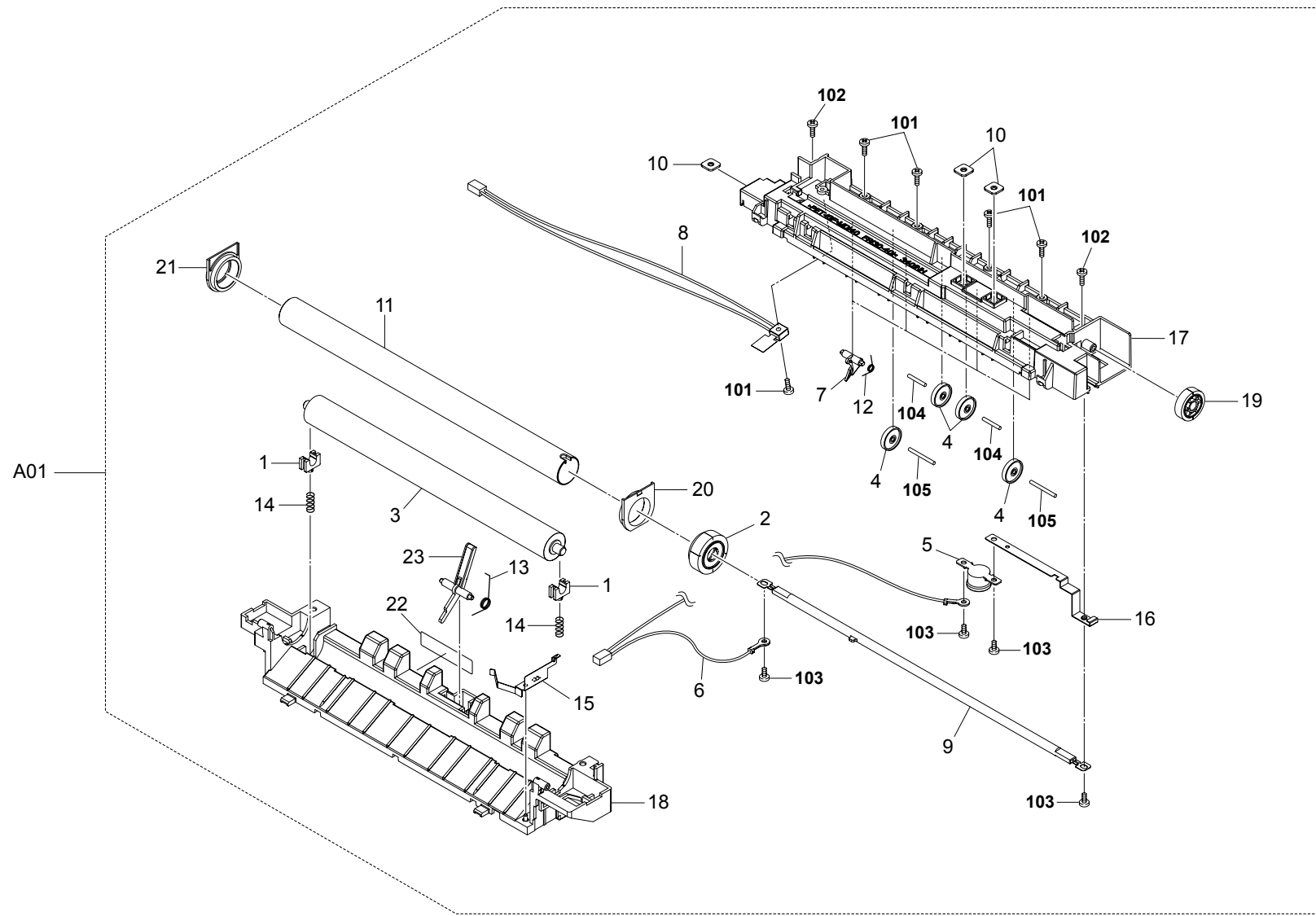


FIG. 8 Fuser Unit

2G4-1

SP	Ref. No.	Part.No.	Alternative.	Description	Quantity		
					120	230	240
⊙	A01	302FV93041	2FV93041	FK-110(E)		1	1
⊙	A01	302FV93050	2FV93050	FK-110(U)	1		
⊙	1	*2BY20070	5MVX221XN004	BUSH PRESS	2	2	2
⊙	2	*302A820161	2A820161	GEAR HEAT Z33	1	1	1
	3	*302DC20061	2DC20061	ROLLER PRESS	1	1	1
	4	*302FV20130	2FV20130	PULLEY EXIT	4	4	4
⊙	5	*302FV27060	2FV27060	THERMOSTAT 250V170C	1	1	1
	6	*5AACNSX3GEA++R	2FV26060	CONN CORD ASSY		1	1
	6	*5AACNSX4GEA++R	2FV26070	CONN CORD ASSY	1		
⊙	7	*5AAVSEPT015	2A820360	SEPARATOR ASSY	4	4	4
⊙	8	*5AAXTM017GEA++R	2FV27040	THERMISTOR ASSY	1	1	1
⊙	9	*5HZPB1216320103	2FV27010	HEATER LAMP U	1		
⊙	9	*5HZPB2413120103	2FV27020	HEATER LAMP E		1	1
	10	*5MMS111SL002	2BY20050	NUT FUSER A	3	3	3
⊙	11	*5MMT876AX002	2BY20010	ROLLER HEAT	1	1	1
	12	*5MMW261LD072	2FV20050	SPRING SEPARATOR	4	4	4
	13	*5MMW261LD073	2FV20060	SPRING ACTUATOR	1	1	1
⊙	14	*5MMW261SD016	2FV20070	SPRING PRESS	2	2	2
	15	*5MMX533LD003	2FV20040	PLATE EARTH FUSER	1	1	1
	16	*5MMX611RD001	2FV20080	PLATE CORD	1	1	1
	17	*5MVB864KB009	2FV20020	FRAME FUSER UP	1	1	1
	18	*5MVB866KB003	2FV20010	FRAME FUSER LOW	1	1	1
	19	*5MVG138XN010	2FV20090	GEAR IDLE Z25	1	1	1
⊙	20	*5MVM188XN015	2A820120	BUSH HEAT R	1	1	1
⊙	21	*5MVM188XN016	2A820131	BUSH HEAT L	1	1	1
	22	*5MVVL611WN06	2FV20100	LABEL FUSER CAUTION	1	1	1
⊙	23	*5MVX531CB002	2FV20030	ACTUATOR FUSER	1	1	1

SP	Ref. No.	Part.No.	Alternative.	Description	Quantity		
					120	230	240
	101	5MBTPB3012PW++R	B1A63120	BIND T.T SCREW(+)/ M3 X 12			
	102	5MBTPB4010PW++R	B1A64100	BIND T.T SCREW(+)/ M4 X 10			
	103	5MBSP43006NW++R	B4A03060	TP HEAD SCREW(+)/ M3 X 6			
	104	5MBP2012WPLD	E5120120	PARALLEL PIN / M2 X 12			
	105	7BP512016+++H01	BP010450	PARALLEL PIN / M2X16			

- Parts with "•" are component parts or sub-assemblies of the assembly appearing immediately above them.
- Parts with "⊙" indicates the spare parts.

- Parts with "••" are component parts or sub-assembly with "•" appearing immediately above them.

FIG. 9 MFP Unit

2G4-1

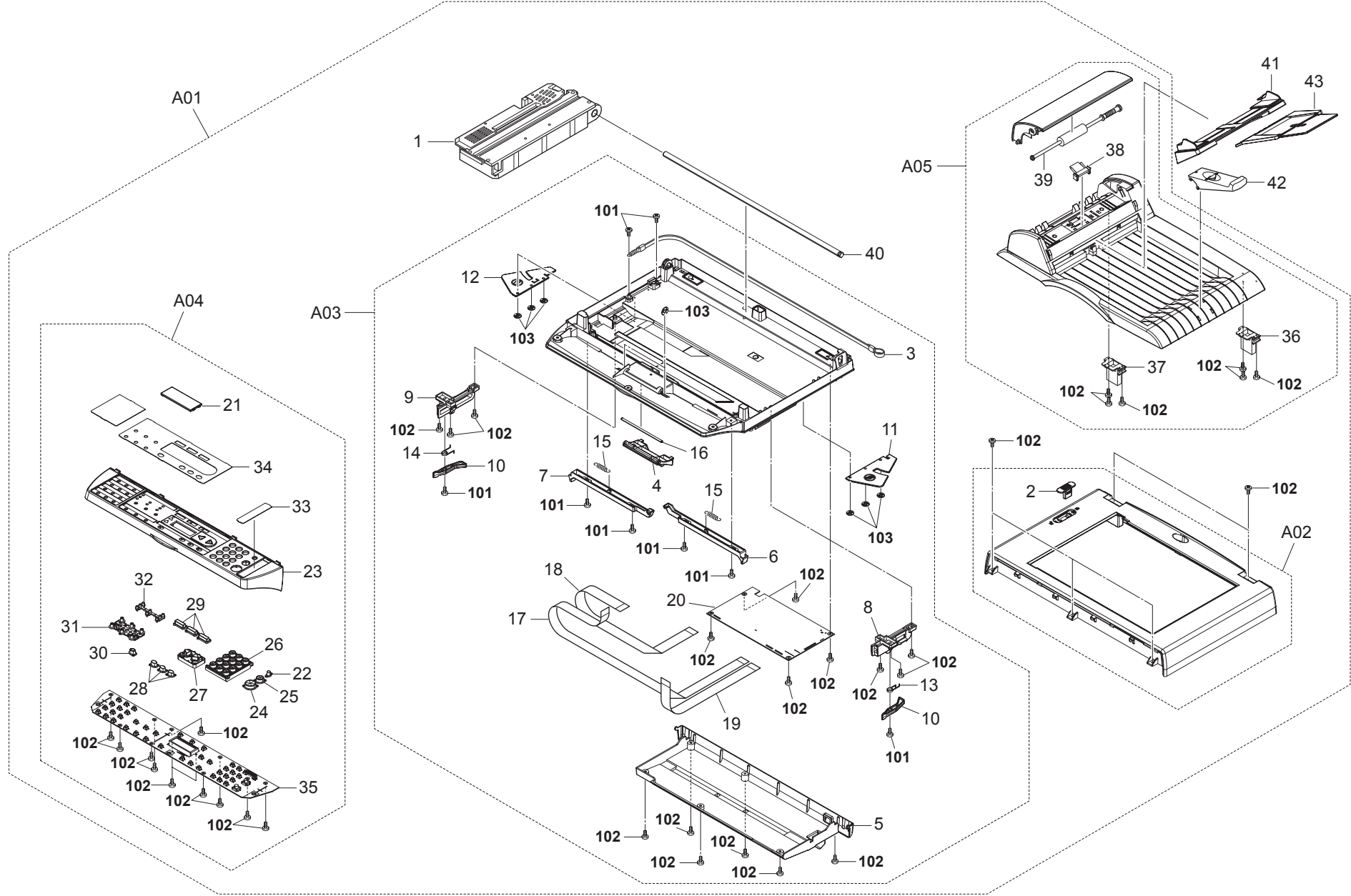


FIG. 9 MFP Unit

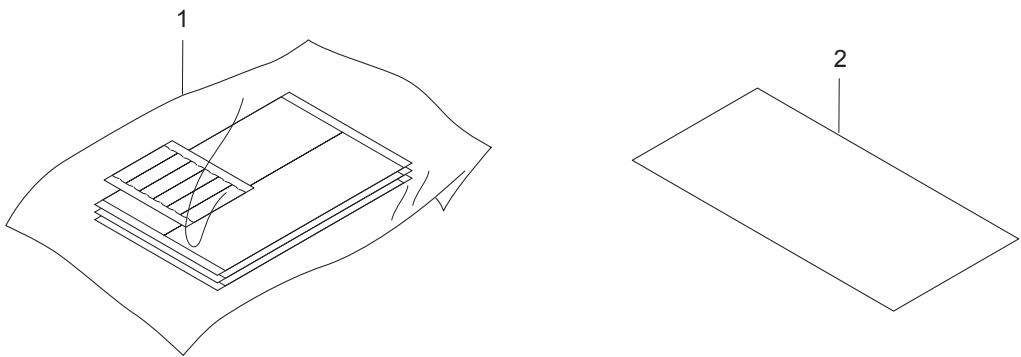
2G4-1

SP	Ref. No.	Part.No.	Alternative.	Description	Quantity		
					120	230	240
⊙	A01	302G445030	2G445030	UNIT MFP	1	1	1
⊙	1	*302G470010	2G470010	UNIT OPTICAL MODULE	1	1	1
⊙	A02	*302G470020	2G470020	UNIT HOUSING UPPER	1	1	1
⊙	2	**302G470180	2G470180	FIXER, CHASSIS	1	1	1
⊙	A03	*302G470030	2G470030	UNIT HOUSING BOTTOM	1	1	1
⊙	3	**302G470040	2G470040	UNIT BELT	1	1	1
⊙	4	**302G470190	2G470190	BUTTON, RELEASE	1	1	1
⊙	5	**302G470200	2G470200	COVER, MFP CONTROLLER	1	1	1
⊙	6	**302G470210	2G470210	LINK, RELEASE (R)	1	1	1
⊙	7	**302G470220	2G470220	LINK, RELEASE (L)	1	1	1
⊙	8	**302G470230	2G470230	GUIDER, ARM (R)	1	1	1
⊙	9	**302G470240	2G470240	GUIDER, ARM (L)	1	1	1
⊙	10	**302G470250	2G470250	LATCH: POM	2	2	2
⊙	11	**302G470260	2G470260	COVER, INSIDE (R)	1	1	1
⊙	12	**302G470270	2G470270	COVER, INSIDE (L)	1	1	1
⊙	13	**302G470280	2G470280	SPRING, TORSION (R)	1	1	1
⊙	14	**302G470290	2G470290	SPRING, TORSION (L)	1	1	1
⊙	15	**302G470300	2G470300	SPRING-2: SUS304	2	2	2
⊙	16	**302G470310	2G470310	PIN, RELEASE BUTTON	1	1	1
⊙	17	**302G470550	2G470550	FFC CABLE 18P	1	1	1
⊙	18	**302G470560	2G470560	FFC CABLE 20P	1	1	1
⊙	19	**302G470570	2G470570	FFC CABLE 22P	1	1	1
⊙	20	**302G470580	2G470580	P.W. BOARD ASSY MFP CONTROLLER	1	1	1
⊙	A04	*302G470050	2G470050	UNIT PANEL	1	1	1
⊙	21	**302G470360	2G470360	COVER, LCD	1	1	1
⊙	22	**302G470400	2G470400	BUTTON, TONER SAVE	1	1	1
⊙	23	**302G470410	2G470410	PANEL, UI	1	1	1
⊙	24	**302G470420	2G470420	BUTTON, START	1	1	1
⊙	25	**302G470430	2G470430	BUTTON, STOP	1	1	1
⊙	26	**302G470440	2G470440	BUTTON, NUMBER	1	1	1
⊙	27	**302G470450	2G470450	BUTTON, ARROW	1	1	1
⊙	28	**302G470460	2G470460	BUTTON, MENU	3	3	3
⊙	29	**302G470470	2G470470	BUTTON, SCAN	3	3	3
⊙	30	**302G470480	2G470480	BUTTON, SCAN-TO	1	1	1
⊙	31	**302G470490	2G470490	BUTTON, SORT	1	1	1
⊙	32	**302G470510	2G470510	LED	1	1	1
⊙	33	**302G470520	2G470520	NAMEPLATE (R)	1	1	1
⊙	34	**302G470530	2G470530	NAMEPLATE, CENTER	1	1	1
⊙	35	**302G470590	2G470590	P.W. BOARD ASSY PANEL	1	1	1
⊙	A05	*302G470060	2G470060	UNIT ADF MODULE	1	1	1
⊙	36	**302G470070	2G470070	UNIT HINGE LITE	1	1	1
⊙	37	**302G470080	2G470080	UNIT HINGE HEAVY	1	1	1
⊙	38	**302G470090	2G470090	PAD ASS'Y SCANCOPIER U-SHAPE ADF	1	1	1
⊙	39	**302G470100	2G470100	UNIT ADF ROLLER	1	1	1
⊙	40	*302G470350	2G470350	SLIDING ROD	1	1	1
⊙	41	302G470110	2G470110	UNIT PAPER SUPPORT	1	1	1
⊙	42	302G470120	2G470120	UNIT STOPPER	1	1	1
⊙	43	302G470130	2G470130	UNIT PAPER TRAY	1	1	1

- Parts with "*" are component parts or sub-assemblies of the assembly appearing immediately above them.
- Parts with "⊙" indicates the spare parts.

SP	Ref. No.	Part.No.	Alternative.	Description	Quantity		
					120	230	240
	101	302G470170	2G470170	SCREW: +P-H, TAP-2, 3-8			
	102	302G470320	2G470320	SCREW: TS-M3-8			
	103	302G470330	2G470330	RING CSRG B, M4			

- Parts with "*" are component parts or sub-assembly with "*" appearing immediately above them.



2G4-1

- Parts with "•" are component parts or sub-assemblies of the assembly appearing immediately above them.
- Parts with "⊙" indicates the spare parts.

- 21 -

INDEX

2G4-1

SP	Part.No.	Alternative.	Description	Fig.No.
⊙	2BY20070	5MVX221XN004	BUSH PRESS	8
	2DC07010		STOPPER PAPER	4
	2DC07020		POSITIONING FOLIO PAPER	4
	2DC07040		FILM SEPARATOR	4
	2DC13030		MIRROR LSU	3
	2DC27410		AC CORD 120 ASSY	3
⊙	2FM02180	5MVX221DN020	BUSH REGIST C	2
	2FM02580	5MMW261LD064	SPRING REGIST C	2
	2FV06180		BOTTOM CASSETTE	4
	302A806051	2A806051	ROLLER REGIST UP	2
	302A807021	2A807021	GUIDE SIDE R	4
	302A807031	2A807031	GUIDE SIDE L	4
	302A807171	2A807171	PLATE BOTTOM	4
⊙	302A820161	2A820161	GEAR HEAT Z33	8
	302DC20061	2DC20061	ROLLER PRESS	8
	302F904120	2F904120	EMBLEM KYOCERA	1
	302F904130	2F904130	TAPE EMBLEM	1
⊙	302FP50330	2FP50330	POLY BAG	10
⊙	302FV00030	2FV00030	TE SENSOR ASSY	2
⊙	302FV00040	2FV00040	FULL SENSOR ASSY	3
	302FV02470	2FV02470	BUSH FD	2
	302FV02480	2FV02480	SPRING ROLL	2
⊙	302FV02490	2FV02490	SPRING TC R	2
	302FV02500	2FV02500	SHEET FAN	2
	302FV04200	2FV04200	SPRING COVER REAR R	1
	302FV06190	2FV06190	PAD SEPARATOR	4
	302FV06210	2FV06210	LABEL MANUAL FEED	4
	302FV06220	2FV06220	SEAL BOTTOM CASSETTE	4
	302FV12070	2FV12070	SHEET ERASER	3
	302FV12080	2FV12080	LABEL LASER CAUTION	3
	302FV14500	2FV14500	LABEL GUIDE DLP	2
	302FV20130	2FV20130	PULLEY EXIT	8
	302FV22160	2FV22160	SPRING GEAR	5
	302FV26052	2FV26052	CONN CORD ASSY	3
⊙	302FV27060	2FV27060	THERMOSTAT 250V170C	8
⊙	302FV45010	2FV45010	FAN MOTOR	2
	302FV45020	2FV45020	AC CORD ASSY	3
	302FV45040	2FV45040	AC CORD ASSY	3
⊙	302FV50020	2FV50020	POLY BAG	10
⊙	302FV93012	2FV93012	DK-110	6
⊙	302FV93020	2FV93020	DV-110	7
⊙	302FV93030	2FV93030	DV-112	7
⊙	302FV93041	2FV93041	FK-110(E)	8
⊙	302FV93050	2FV93050	FK-110(U)	8
⊙	302FV93061	2FV93061	DR-110	5
⊙	302FV93070	2FV93070	MC-110	6
⊙	302FV93081	2FV93081	CT-110	4
⊙	302FV93092	2FV93092	LK-110	3
	302G402010	2G402010	BRACKET FAN	3
	302G402030	2G402030	LABEL JAM OPERATION	2

SP	Part.No.	Alternative.	Description	Fig.No.
⊙	302G402040	2G402040	LABEL CONT OPERATION	3
⊙	302G404010	2G404010	COVER TOP PRINTER	1
⊙	302G404020	2G404020	COVER LID	1
⊙	302G404030	2G404030	COVER SIDE L	1
⊙	302G404040	2G404040	COVER SIDE R	1
	302G404050	2G404050	TRAY SUBTRAY	1
	302G404060	2G404060	SPRING PULLEY FD	1
	302G404070	2G404070	ARM LID L	1
	302G404080	2G404080	ARM LID R	1
	302G404090	2G404090	LINK LIFT L	1
	302G404100	2G404100	LINK LIFT R	1
	302G404110	2G404110	GEAR ARM DAMPING	1
	302G404130	2G404130	PIN PIVOT OD=4 L=20	1
	302G404140	2G404140	PLATE LOGOTYPE	1
	302G404150	2G404150	SPRING ARM	1
	302G404160	2G404160	DAMPER	1
	302G404380	2G404380	LABEL LID OPERATION	1
	302G404450	2G404450	SHEET FD	1
	302G404460	2G404460	SHEET GUIDE SIDE	1
	302G404470	2G404470	SHEET GUIDE TOP	1
	302G405010	2G405010	SHEET PANEL SET	10
	302G405020	2G405020	SHEET PANEL SET KME	10
	302G439010	2G439010	LID CONTROLLER	2
	302G444020	2G444020	FAN MOTOR	3
⊙	302G445010	2G445010	UNIT LOW VOLTAGE 100	3
⊙	302G445020	2G445020	UNIT LOW VOLTAGE 200	3
⊙	302G445030	2G445030	UNIT MFP	9
	302G446010	2G446010	CONN.CORD ASSY MAIN-LSU	3
	302G446030	2G446030	CONN.CORD ASSY LVP-MAIN	3
⊙	302G470010	2G470010	UNIT OPTICAL MODULE	9
⊙	302G470020	2G470020	UNIT HOUSING UPPER	9
⊙	302G470030	2G470030	UNIT HOUSING BOTTOM	9
⊙	302G470040	2G470040	UNIT BELT	9
⊙	302G470050	2G470050	UNIT PANEL	9
⊙	302G470060	2G470060	UNIT ADF MODULE	9
	302G470070	2G470070	UNIT HINGE LITE	9
	302G470080	2G470080	UNIT HINGE HEAVY	9
⊙	302G470090	2G470090	PAD ASS'Y SCANCOPIER U-SHAPE ADF	9
⊙	302G470100	2G470100	UNIT ADF ROLLER	9
	302G470110	2G470110	UNIT PAPER SUPPORT	9
	302G470120	2G470120	UNIT STOPPER	9
	302G470130	2G470130	UNIT PAPER TRAY	9
	302G470180	2G470180	FIXER,CHASSIS	9
	302G470190	2G470190	BUTTON, RELEASE	9
	302G470200	2G470200	COVER,MFP CONTROLLER	9
	302G470210	2G470210	LINK, RELEASE (R)	9
	302G470220	2G470220	LINK, RELEASE (L)	9
	302G470230	2G470230	GUIDER, ARM (R)	9
	302G470240	2G470240	GUIDER, ARM (L)	9
	302G470250	2G470250	LATCH:POM	9

• Parts with "⊙" indicates the spare parts.

SP	Part.No.	Alternative.	Description	Fig.No.	SP	Part.No.	Alternative.	Description	Fig.No.
	302G470260	2G470260	COVER,INSIDE (R)	9	⊙	5MMT463SN002	2FV02200	PIN DRIVE	2
	302G470270	2G470270	COVER,INSIDE (L)	9		5MMT766SN011	2FV02210	SHAFT FEED	2
	302G470280	2G470280	SPRING,TORSION (R)	9		5MMT875SN016	2FV02220	ROLLER FD	2
	302G470290	2G470290	SPRING,TORSION (L)	9	⊙	5MMT876AX002	2BY20010	ROLLER HEAT	8
	302G470300	2G470300	SPRING-2:SUS304	9	⊙	5MMT876SN104	2FV02230	ROLLER TRANSFER	2
	302G470310	2G470310	PIN,RELEASE BUTTON	9	⊙	5MMT876SN105	2FV02240	ROLLER REGIST LOW	2
	302G470350	2G470350	SLIDING ROD	9		5MMU862SL001	2FV02250	PLATE EARTH GUIDE	2
⊙	302G470360	2G470360	COVER,LCD	9		5MMW126SD001	2FV04130	SPRING COVER REAR	1
⊙	302G470400	2G470400	BUTTON,TONER SAVE	9		5MMW165SD001	2FV02400	SPRING STOPPER L	3
⊙	302G470410	2G470410	PANEL,UI	9		5MMW165SD002	2FV02410	SPRING STOPPER R	3
⊙	302G470420	2G470420	BUTTON,START	9		5MMW171LD006	2A807530	SPRING STOPPER	4
⊙	302G470430	2G470430	BUTTON,STOP	9		5MMW251LD045	2A807140	SPRING LOCK	4
⊙	302G470440	2G470440	BUTTON,NUMBER	9		5MMW251LD047	2A807110	SPRING SEPARATOR C	4
⊙	302G470450	2G470450	BUTTON,ARROW	9	⊙	5MMW261LD023	2A806410	SPRING REGIST R	2
⊙	302G470460	2G470460	BUTTON,MENU	9		5MMW261LD036	2A814570	SPRING TE SENSOR	2
⊙	302G470470	2G470470	BUTTON,SCAN	9		5MMW261LD066	2FV02260	SPRING ACTUATOR	2
⊙	302G470480	2G470480	BUTTON,SCAN-TO	9		5MMW261LD067	2FV02270	SPRING LEVER LOCK L	2
⊙	302G470490	2G470490	BUTTON,SORT	9		5MMW261LD068	2FV02280	SPRING LEVER LOCK R	2
	302G470510	2G470510	LED	9		5MMW261LD069	2FV02290	SPRING EXIT	2
⊙	302G470520	2G470520	NAMEPLATE (R)	9		5MMW261LD070	2FV12010	SPRING FULL SENSOR	3
⊙	302G470530	2G470530	NAMEPLATE,CENTER	9		5MMW261LD071	2FV22010	SPRING REVERSE	5
	302G470550	2G470550	FFC CABLE 18P	9		5MMW261LD072	2FV20050	SPRING SEPARATOR	8
	302G470560	2G470560	FFC CABLE 20P	9		5MMW261LD073	2FV20060	SPRING ACTUATOR	8
	302G470570	2G470570	FFC CABLE 22P	9	⊙	5MMW261SD016	2FV20070	SPRING PRESS	8
⊙	302G470580	2G470580	P.W.BOARD ASSY MFP CONTROLLER	9		5MMW361LD028	2FV02310	SPRING PIN BIAS	2
⊙	302G470590	2G470590	P.W.BOARD ASSY PANEL	9		5MMW371LD006	2FV02320	SPRING FREE	2
⊙	302G480010	2G480010	P.W.B ASSY ENGINE(SP)	3		5MMW451LD001	2B700570	SPRING INTERLOCK	2
⊙	302G622010	2G622010	SPRING TC L	2	⊙	5MMW552LD004	2FV06120	SPRING CASSETTE	4
	302G634070	2G634070	LABEL ENERGY STAR	1		5MMX221LD034	2FV12030	SPRING MIRROR	3
⊙	302GM44010	2GM44010	SOLENOID FEED	5		5MMX321LD040	2FV22020	PLATE EARTH DRUM	5
⊙	302GM44020	2GM44020	SOLENOID REGIST	5		5MMX331LD005	2FV02330	PLATE CONTACT TC	2
	3HK27050		CORE 8-16X10	3		5MMX522LD013	2FV02340	PLATE EARTH FEED	2
	5AACCNSX3GEA++R	2FV26060	CONN CORD ASSY	8		5MMX533LD003	2FV20040	PLATE EARTH FUSER	8
	5AACCNSX4GEA++R	2FV26070	CONN CORD ASSY	8		5MMX541LD002	2FV02350	PLATE EARTH A	3
⊙	5AAPRELCL1008AHR	2FV01100	P.W.B.ASSY KP-5157	3		5MMX611RD001	2FV20080	PLATE CORD	8
⊙	5AAPRIFC1037AHR	2FV01080	P.W.B ASSY KP-1113	5		5MMX631LD003	2A807180	GUIDE SEPARATOR	4
⊙	5AAVCLTCH028	2BY02020	CLUTCH FEED	2		5MMX643LD006	2FV02360	PLATE EARTH B	2
⊙	5AAVCLTCH032	2FV02180	CLUTCH REGIST	2		5MMX763LD007	2FV02370	PLATE CONTACT MC	2
⊙	5AAVR0LL+044	2A806010	ROLLER FEED ASSY	2		5MMX874SL005	2FV22030	PLATE DRIVE	5
⊙	5AAVSEPR015	2A820360	SEPARATOR ASSY	8		5MMX884SL002	2FV02380	PLATE BOTTOM FRAME	3
⊙	5AAXMT074GEA	2FV27000	MOTOR MAIN	5		5MVB763CB001	2FV02010	COVER MC	2
⊙	5AAXTM017GEA++R	2FV27040	THERMISTOR ASSY	8		5MVB864KB009	2FV20020	FRAME FUSER UP	8
⊙	5HZPB1216320103	2FV27010	HEATER LAMP U	8		5MVB864SB024	2FV06100	TRAY MULTI	4
⊙	5HZPB2413120103	2FV27020	HEATER LAMP E	8		5MVB866KB003	2FV20010	FRAME FUSER LOW	8
	5MMP141LD002	2A807510	PLATE SIDE GUIDE	4	⊙	5MVB874SB011	2FV04060	COVER REAR	1
	5MMP141LD003	2A807520	PLATE STOPPER	4		5MVB887SB002	2FV06010	BASE CASSETTE	4
	5MMS111SL002	2BY20050	NUT FUSER A	8	⊙	5MVG126DB025	2A806240	GEAR REGIST Z13	2
	5MMS821LD014	2A816080	BRUSH DISCHARGER	2	⊙	5MVG127DB047	2A806230	GEAR REGIST Z20	2
	5MMS875SL007	2FV12020	COVER SCANNER	3		5MVG127DN071	2A807050	GEAR CASSETTE	4
	5MMT365SN003	2A815020	PIN CONTACT BIAS	2	⊙	5MVG127DN130	2FV02020	GEAR FD Z19S	2

• Parts with "⊙" indicates the spare parts.

SP	Part.No.	Alternative.	Description	Fig.No.	SP	Part.No.	Alternative.	Description	Fig.No.
⊙	5MVG127DN131	2FV02030	GEAR TC Z17	2		5MVX631SB007	2FV02430	LEVER STOPPER R	3
	5MVG127DN132	2FV22040	GEAR FREE Z26H A	5		5MVX642SH010	2A807100	SEPARATOR PAPER	4
	5MVG127DN133	2FV22050	GEAR Z18H	5		5MVX652SB015	2FV22150	BRACKET DRIVE	5
⊙	5MVG138DN088	2FV02040	GEAR FREE Z28S	2		5MVX664SH005	2FV06070	LEVER PAPER INDICATOR	4
	5MVG138DN089	2FV22060	GEAR FREE Z26H B	5		5MVX762SB019	2FV06040	GUIDE MULTI L	4
	5MVG138DN090	2FV22070	GEAR Z29H	5		5MVX762SB020	2FV06050	GUIDE MULTI R	4
	5MVG138XN010	2FV20090	GEAR IDLE Z25	8		5MVX763SB011	2FV02150	ROD INTERLOCK	2
⊙	5MVG148DN107	2FV02050	GEAR Z34S	2		5MVX821SB014	2FV12050	SHUTTER LSU	3
	5MVG148DN108	2FV22080	GEAR Z33H	5		5MVX864SB013	2FV06060	GUIDE TURN	4
	5MVG148DN109	2FV22090	GEAR Z39H	5		5MVX865SB008	2FV02160	GUIDE FEED	2
	5MVG148DN110	2FV22100	GEAR Z31H-Z25H	5		5MVX876SB010	2FV06020	COVER CASSETTE	4
	5MVG148DN111	2FV22110	GEAR Z38H-Z26H	5		5MVX876XB002	2FV12060	FRAME MID	3
⊙	5MVG158DN059	2FV02060	GEAR FREE Z46H	2		5MVX888CB001	2FV02170	FRAME BASE	2
⊙	5MVG158DN060	2FV02070	GEAR FD Z42S	2		7YZM610003++H01	YZ010250	ACCESS SADDLE	2
⊙	5MVG158DN061	2FV02080	GEAR FD Z45S	2		M70CA010		FERRITE CORE,SFT-72SN(TAKEUCHI)	2
	5MVG158DN062	2FV22120	GEAR Z45H-Z27H	5					
	5MVG168DN022	2FV22130	GEAR Z76H-Z27H	5					
	5MVG168DN023	2FV22140	GEAR Z70H-Z34H	5					
	5MVM176DN016	2BR20170	BUSH A	2					
⊙	5MVM188XN015	2A820120	BUSH HEAT R	8					
⊙	5MVM188XN016	2A820131	BUSH HEAT L	8					
⊙	5MVM363DB001	2FV04150	PULLEY FD	1					
⊙	5MVM776DB001	2FV02090	PULLEY FEED	2					
	5MVS217SN002	2A806280	PAD SOLENOID	5					
	5MVS616XN001	2A807080	PAD BOTTOM	4					
	5MVS625XF001	2FV04140	DISCHARGER FD	1					
	5MVS631TX001	3BW07040	TAPE SEPARATOR OP	4					
⊙	5MVS721KF007	2FV02390	SHEET REGIST	2					
	5MVS777CB001	2FV02000	COVER PWB	3					
	5MVS812KF006	2A816090	SHEET DISCHARGER	2					
	5MVS812XF003	2A816120	TAPE BRUSH	2					
	5MVVL611WN06	2FV20100	LABEL FUSER CAUTION	8					
	5MVX111DN003	2A806250	RING STOPPER	2					
⊙	5MVX221DB019	2A806420	BUSH REGIST LEFT	2					
⊙	5MVX221DB023	2A816020	BUSH TC L	2					
⊙	5MVX221DW006	2A806430	BUSH REGIST RIGHT	2					
⊙	5MVX221DW008	2A816030	BUSH TC R	2					
	5MVX221RB014	2BS03110	FOOT	3					
	5MVX321SG002	2FV06090	MARKER INDICATOR	4					
	5MVX431DN005	2FV02100	LEVER LOCK DLP	2					
	5MVX431SB012	2FV02450	RAIL FRAME	3					
	5MVX432SB014	2FV02460	BKT ACTUATOR EXIT	2					
⊙	5MVX441SB006	2FV02110	ACTUATOR REGIST	2					
⊙	5MVX442SB011	2FV02120	ACTUATOR EXIT	2					
⊙	5MVX531CB002	2FV20030	ACTUATOR FUSER	8					
	5MVX541DG002	2A807191	LEVER REAR	4					
	5MVX541DG003	2A807161	LEVER SIDE	4					
	5MVX552DB001	2FV02130	ACTUATOR EMPTY	2					
	5MVX631DN001	2FV06030	LOCK CASSETTE	4					
	5MVX631SB006	2FV02420	LEVER STOPPER L	3					

• Parts with "⊙" indicates the spare parts.

KYOCERA MITA EUROPE B.V.

Hoeksteen 40, 2132 MS Hoofddorp,
The Netherlands
Phone: +31.20.654.0000
Home page: <http://www.kyoceramita-europe.com>
Email: info@kyoceramita-europe.com

KYOCERA MITA NEDERLAND B.V.
Beechavenue 25, 1119RA Schiphol-Rijk
The Netherlands
Phone: +31.20.58.77.200

KYOCERA MITA (UK) LTD
8 Beacontree Plaza
Gillette Way Reading Berks RG2 0BS,
U.K.
Phone: +44.1189.311.500

KYOCERA MITA ITALIA S.p.A.
Via G. Verdi, 89 / 91, 20063 Cernusco s/N
Milano, Italy
Phone: +39.02.92179.1

S.A. KYOCERA MITA BELGIUM N.V.
Hermesstraat 8A, 1930 Zaventem,
Belgium
Phone: +32.2.720.9270

KYOCERA MITA FRANCE S.A.
Parc Les Algorithmes Saint Aubin
91194 GIF-SUR-YVETTE,
France
Phone: +33.1.6985.2600

KYOCERA MITA ESPAÑA S.A.
Edificio Kyocera, Avda de Manacor No. 2,
28290 Las Matas (Madrid),
Spain
Phone: +34.91.631.8392

KYOCERA MITA FINLAND OY
Kirvesmiehenkatu 4, 00880 Helsinki,
Finland
Phone: +358.9.4780.5200

KYOCERA MITA (SCHWEIZ)
Hohlstrasse 614, 8048 Zürich
Switzerland
Phone: +41.1.908.4949

KYOCERA MITA DEUTSCHLAND GMBH
Mollsfeld 12, 40670 Meerbusch,
Germany
Phone: +49.2159.918.0

KYOCERA MITA GMBH AUSTRIA
Eduard-Kittenberger-Gasse 95,
1230 Wien,
Austria
Phone: +43.1.86338.210

KYOCERA MITA SVENSKA AB
Vretenvägen 2, 6tr, 17 154 Solna,
Sweden
Phone: +46.8.546.55000

KYOCERA MITA NORGE
Postboks 150 Oppsal, NO 0619 Oslo
Olaf Helsetsvet 6, NO 0694 Oslo,
Norway
Phone: +47.22.62.73.00

KYOCERA MITA DANMARK A/S
Ejby Industrivej 1, DK-2600 Glostrup,
Denmark
Phone: +45.5687.1100

KYOCERA MITA PORTUGAL LDA.
Rua do Centro Cultural, 41 (Alvalade) 1700-106 Lisbon,
Portugal
Phone: +351.21.842.9100

KYOCERA MITA SOUTH AFRICA (PTY) LTD.
527 Kyalami Boulevard,
Kyalami Business Park Midrand,
South Africa
Phone: +27.(0)11.540.2600

KYOCERA MITA AMERICA, INC.

Headquarters:
225 Sand Road,
Fairfield, New Jersey 07004-0008,
U.S.A.
Phone: (973) 808-8444

KYOCERA MITA AUSTRALIA PTY. LTD.
Level 3, 6-10 Talavera Road, North Ryde,
N.S.W. 2113 Australia
Phone: (02) 9888-9999

KYOCERA MITA NEW ZEALAND LTD.
1-3 Parkhead Place, Albany
P.O. Box 302 125 NHPC, Auckland,
New Zealand
Phone: (09) 415-4517

KYOCERA MITA (THAILAND) CORP., LTD.
9/209 Ratchada-Prachachem Road,
Bang Sue, Bangkok 10800, Thailand
Phone: (02) 586-0320

KYOCERA MITA SINGAPORE PTE LTD.
121 Genting Lane, 3rd Level,
Singapore 349572
Phone: 67418733


KYOCERA MITA HONG KONG LIMITED
11/F., Mita Centre,
552-566, Castle Peak Road,
Tsuen Wan, New Territories,
Hong Kong
Phone: 24297422

KYOCERA MITA TAIWAN Corporation.
7F-1~2, No.41, Lane 221, Gangchi Rd.
Neihu District, Taipei, Taiwan, 114. R.O.C.
Phone: (02) 87511560

KYOCERA MITA Corporation

2-28, 1-chome, Tamatsukuri, Chuo-ku
Osaka 540-8585, Japan
Phone: (06) 6764-3555
<http://www.kyoceramita.com>

©2006 KYOCERA MITA Corporation

 **KYOCERA** is a trademark of Kyocera Corporation

KYOCERA MITA AMERICA, INC.

Headquarters:

225 Sand Road,
Fairfield, New Jersey 07004-0008
TEL : (973) 808-8444
FAX : (973) 882-6000

Midwestern Region:

201 Hansen Court Suite 119
Wood Dale, Illinois 60191
TEL : (630) 238-9982
FAX : (630) 238-9487

Southwestern Region:

2825 West Story Road,
Irving, Texas 75038-5299
TEL : (972) 550-8987
FAX : (972) 252-9786

New York Branch:

1410 Broadway 23rd floor
New York, NY 10018
TEL : (917) 286-5400
FAX : (917) 286-5402

Western Region:

14101 Alton Parkway,
Irvine, California 92618-7006
TEL : (949) 457-9000
FAX : (949) 457-9119

National Operation Center & National Training Center:

2825 West Story Road,
Irving, Texas 75038-5299
TEL : (972) 659-0055
FAX : (972) 570-5816

Northeastern Region:

225 Sand Road,
Fairfield, New Jersey 07004-0008
TEL : (973) 808-8444
FAX : (973) 882-4401

Southeastern Region:

1500 Oakbrook Drive,
Norcross, Georgia 30093
TEL : (770) 729-9786
FAX : (770) 729-9873

Latin America Division:

8240 N.W. 52nd. Terrace Dawson Building,
Suite 108 Miami, Florida 33166
TEL : (305) 421-6640
FAX : (305) 421-6666

KYOCERA MITA CANADA, LTD.

6120 Kestrel Road, Mississauga,
Ontario L5T 1S8, Canada
TEL : (905) 670-4425
FAX : (905) 670-8116

KYOCERA MITA MEXICO, S.A. DE C.V.

Av. 16 de Septiembre #407
Col. Santa Inés,
Azcapotzalco México,
D.F. 02130, México
TEL : (55) 5383-2741
FAX : (55) 5383-7804