



---

# KM-2050 KM-1650



## PARTS LIST

Published in May. '04  
842DA120

## NOTE

1. Indicate parts number and machine model when placing an order.

eg.	Parts Number	Parts Name	Machine Model	Cycle	Quantity
	2DA04010	FRONT RIGHT COVER	KM-2050	50Hz	1
	2DB04010	FRONT RIGHT COVER	KM-1650	50Hz	1

2. Service calls and freight will be charged separately.

3. Symbols in the "Parts Number" column.

- Parts with "⊙" indicates the spare parts and the parts without "⊙" can not be supplied.


- Parts with "•" are component parts or sub-assemblies of the assembly appearing immediately above them.

eg.	Parts Number	Parts Name	Parts Number	Parts Name
	2C993030	PARTS,DV-410,SP	•2BZ22230	BUSH GEAR Z26H49515M0001A4
			•2C914080	REAR COVER DLP

- Parts with "••" are component parts or sub-assembly with "•" appearing immediately above them.

eg.	Parts Number	Parts Name	Parts Number	Parts Name
	•2C993020	PARTS,MC-410,SP	••2BZ02300	SPRING WIRE
			••2CK10060	CORONA WIRE MCH

4. See the last page of this parts list for the classification of the screws in the illustrations.

5. Items indicated by shaded areas (  ) are supply parts and should be ordered through your Regional Office.



## Parts List

**KM-2050**

**KM-1650**

## —— CONTENTS ——

FIG. 1	EXTERIOR COVERS .....	2	FIG. 10	SCANNER SECTION .....	20
FIG. 2	FRAMES.....	4	FIG. 11	IMAGING UNIT .....	22
FIG. 3	EXTERIOR COVERS (KM-2050) .....	6	FIG. 12	FUSER UNIT .....	24
FIG. 4	PAPER FEED SECTION (KM-2050) .....	8	FIG. 13	DRIVING & COOLING SECTION .....	26
FIG. 5	CASSETTE.....	10	FIG. 14	ELECTRICAL COMPONENTS .....	28
FIG. 6	CONVEYING SECTION .....	12	FIG. 15	OPERATION UNIT .....	30
FIG. 7	PAPER FEED SECTION .....	14	FIG. 16	OPTION I (ORIGINAL HOLDER) .....	32
FIG. 8	BYPASS SECTION .....	16	FIG. 17	OPTION II & TOOL .....	34
FIG. 9	EXIT SECTION.....	18			
				• INDEX .....	36

FIG. 1 EXTERIOR COVERS

2DA/2DB

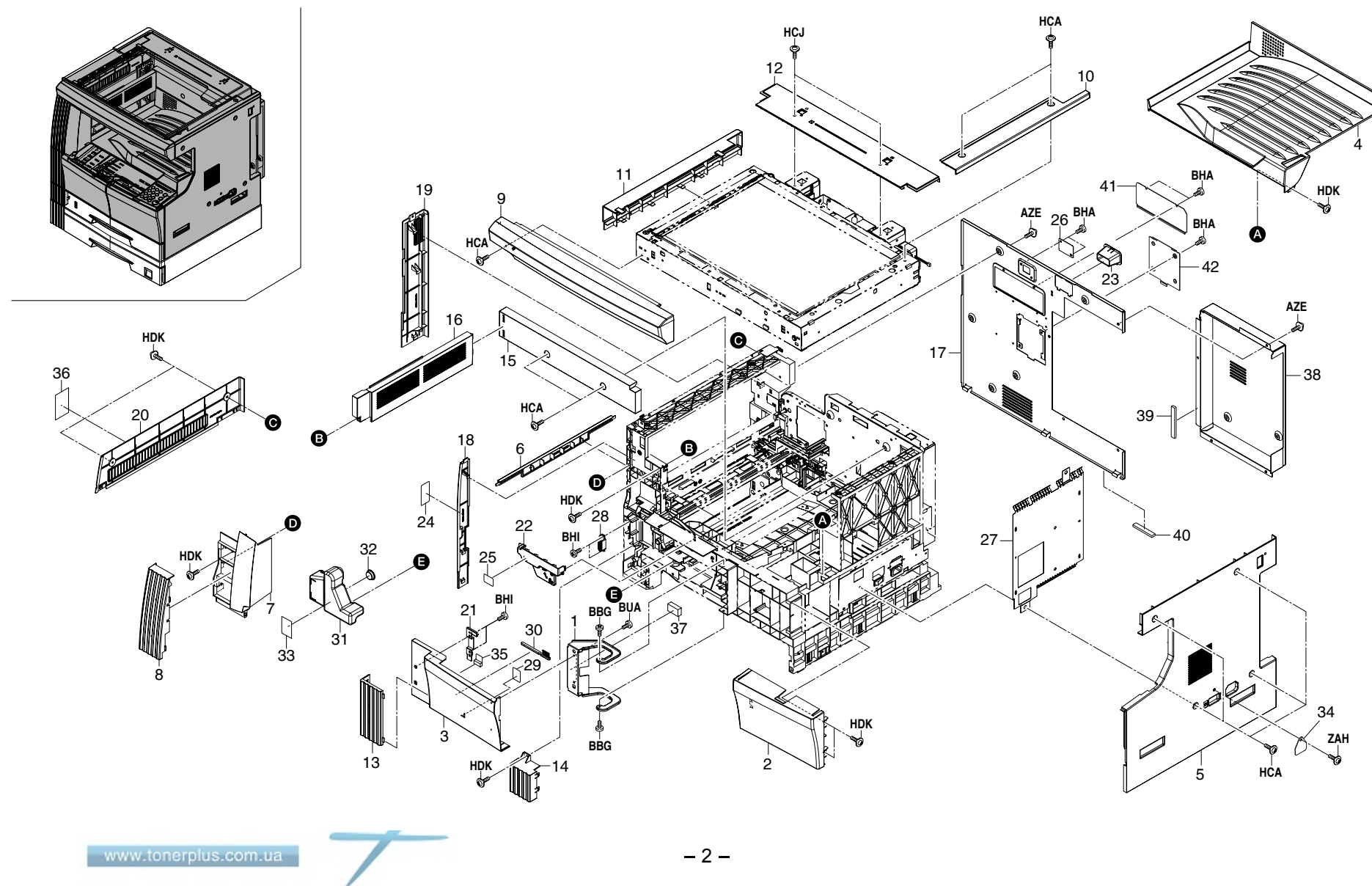


FIG. 1 EXTERIOR COVERS

SP	Ref.No.	Part.No.	Alternative.	Description	Quantity		
					120V	230V	240V
⊙	1	2C902140	302C904031	HINGE FRONT COVER	1	1	1
⊙	2	2DA04010		FRONT RIGHT COVER (KM-2050)	1	1	1
⊙	2	2DB04010		FRONT RIGHT COVER (KM-1650)	1	1	1
⊙	3	2C904470		FRONT LEFT COVER(K)	1	1	1
⊙	4	2C904031		TRAY EXIT (1/2)	1	1	1
⊙	5	2C904041		RIGHT COVER	1	1	1
⊙	6	2C904060		LEFT LOW COVER	1	1	1
⊙	7	2C904070		UPPER FRONT COVER	1	1	1
⊙	8	2C904080		FRONT SIDE COVER UP	1	1	1
⊙	9	2C904090		FRONT TOP COVER	1	1	1
⊙	10	2C904100		RIGHT TOP COVER	1	1	1
⊙	11	2C904110		LEFT TOP COVER	1	1	1
⊙	12	2C904120		REAR TOP COVER	1	1	1
⊙	13	2C904130		FRONT SIDE COVER MID	1	1	1
⊙	14	2C904140		FRONT SIDE COVER LOW	1	1	1
⊙	15	2C904150	302C904372	INNER REAR COVER	1	1	1
⊙	16	2C904160		INNER LEFT COVER	1	1	1
⊙	17	2DA04040		REAR COVER	1	1	1
⊙	18	2C904180		LEFT FRONT COVER	1	1	1
⊙	19	2C904190		LEFT REAR COVER	1	1	1
⊙	20	2C904200		LEFT MIDDLE COVER	1	1	1
⊙	21	2C904290		PLATE FRONT COVER	1	1	1
⊙	22	2C904372		INNER FRONT COVER	1	1	1
⊙	23	2C904410		COVER DSUB	1	1	1
⊙	24	2C905080		LABEL CONVEYING JAM	1	1	1
⊙	25	2C905100		LABEL RADIATION	1	1	1
⊙	26	2C912430		LID KMAS	1	1	1
⊙	27	2C926130		SHIELD RIGHT COVER	1	1	1
⊙	28	60804120		MAGNET CATCH	1	1	1
⊙	29	2BL05070	7ZGSTG15C050H01	LABEL SEP CLEANING	1	1	1
⊙	30	2BL16220		BRUSH CLEANER	1	1	1
⊙	31	2C918150		TANK DISPOSAL	1	1	1
⊙	32	2C918170		CAP TANK DISPOSAL	1	1	1
⊙	33	2AV73580		LABEL, TONER DISPOSAL TANK HK	1	1	1
⊙	34	2DA04020		LID MAIN SW	1	1	1
⊙	35	2C904480		FILM FRONT COVER	1	1	1
⊙	36	2C905220		LABEL LEFT COVER	1	1	1
⊙	37	2C904510		SPONGE COVER	1	1	1
⊙	38	2DA04030		COVER SHIELD	1	1	1
⊙	39	ZG000470		SHIELD GASKET	1	1	1

2DA/2DB

SP	Ref.No.	Part.No.	Alternative.	Description	Quantity		
					120V	230V	240V
⊙	40	ZG000490	7ZGSTG55C025H01	SHIELD GASKET	1	1	1
⊙	41	2DA04090	302DA04090	LID FINISHER	1	1	1
⊙	42	2DA04100	302DA04100	LID REAR COVER	1	1	1

- Parts with "•" are component parts or sub-assemblies of the assembly appearing immediately above them.
- Parts with "⊙" indicates the spare parts.

- Parts with "••" are component parts or sub-assembly with "•" appearing immediately above them.

FIG. 2 FRAMES

2DA/2DB

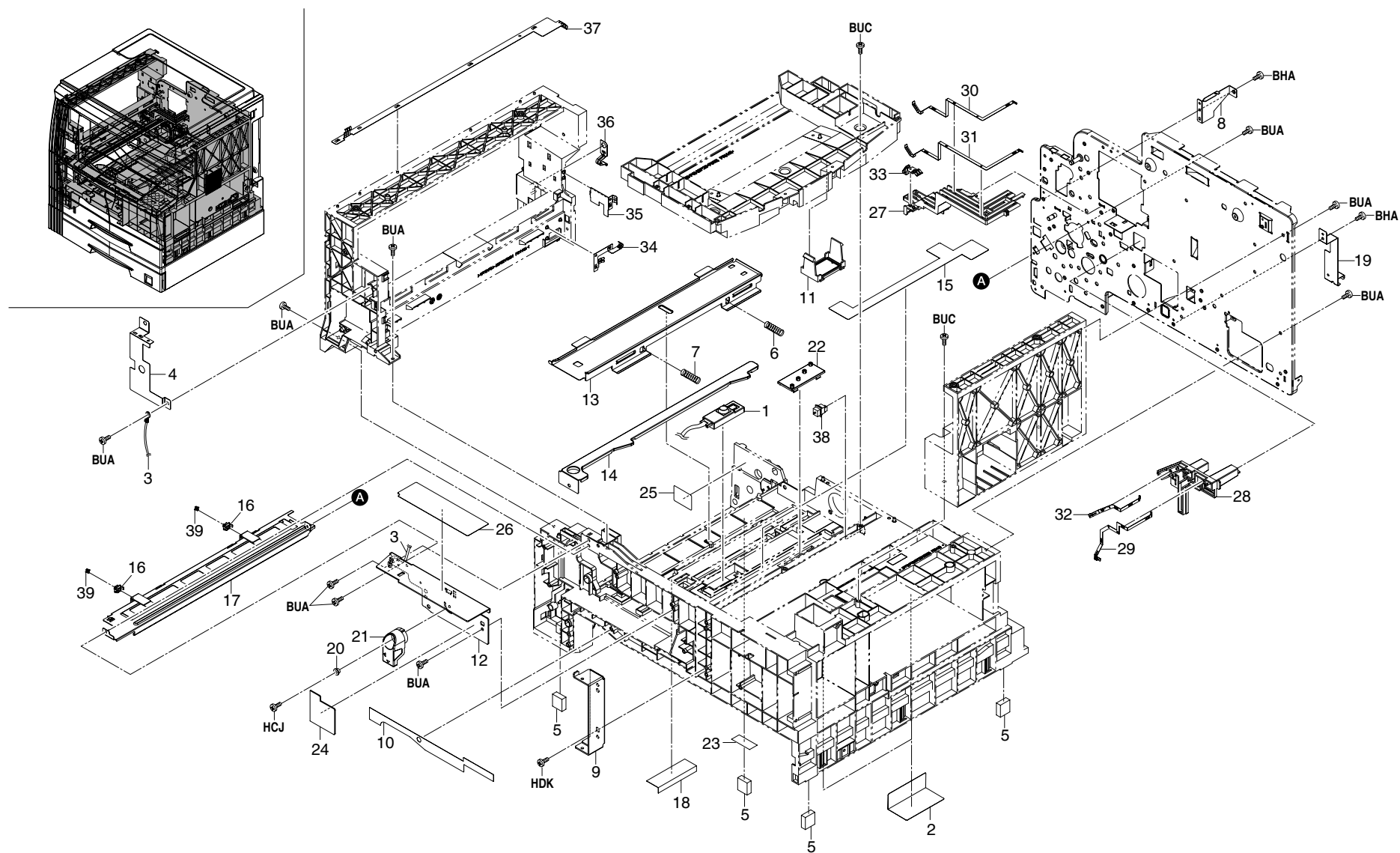


FIG. 2 FRAMES

2DA/2DB

SP	Ref.No.	Part.No.	Alternative.	Description	Quantity		
					120V	230V	240V
⊙	1	2C901180		CONT SENSOR ASSY	1	1	1
	2	2C902230		FILM BASE L	2	2	2
	3	2C927790		WIRE UPPER LEFT	1	1	1
	4	2C926150		SHIELD UPPER LEFT B	1	1	1
	5	2C902070		BASE RUBBER	4	4	4
	6	2C902080		SPRING DEV PUSH	1	1	1
	7	2C902590		SPRING DEV PUSH F	1	1	1
	8	2C902100		MOUNT REAR COVER	1	1	1
	9	2C902110		MOUNT FRONT COVER	1	1	1
	10	2C902120		PANEL FRONT	1	1	1
	11	2C902130		MOUNT CONT PCB	1	1	1
	12	2C902151		MOUNT CONT LEVER	1	1	1
	13	2C902160		RAIL DLP	1	1	1
	14	2C902170		LEVER DEV PUSH	1	1	1
⊙	15	2C902180		FILM BASE	1	1	1
	16	2C902280		HOLDER PULLEY	2	2	2
	17	2C902200		RAIL CLEANING	1	1	1
	18	2C902240		FILM BASE B	1	1	1
	19	2C902260		GROUND PLATE FRAME	1	1	1
	20	2C902520		COLLAR LEVER CONT.	1	1	1
	21	2C902540		LEVER LOCK CONT.	1	1	1
	22	2C902510		GUIDE A CONT.	1		
	22	2C902560		GUIDE B CONT.		1	1
	23	2C902270		SPACER BASE	1	1	1
⊙	24	2C905071		LABEL CONT SET	1	1	1
	25	2C905110		LABEL DRUM CAUTION	1	1	1
	26	2DA25360		SHEET OPERATION PCB	1	1	1
	27	2C926010		BASE TERMINAL TRANSFER	1	1	1
	28	2C926020		BASE TERMINAL MAIN	1	1	1
	29	2C926030		TERMINAL DLP	1	1	1
	30	2C926040		TERMINAL TRANSFER	1	1	1
	31	2C926050		TERMINAL SEPARATION	1	1	1
	32	2C926060		TERMINAL MAIN	1	1	1
	33	2C926080		GROUND PLATE CONVEYING	1	1	1
	34	2C926100		TERMINAL FUSER	1	1	1
	35	2C926111	302C926111	GROUND PLATE EXIT	1	1	1
	36	2C926120		GROUND PLATE FUSER	1	1	1
	37	2C926140		SHIELD UPPER LEFT	1	1	1
⊙	38	2C927140		SWITCH CONTAINER	1	1	1
	39	2A118370		PULLEY,DRUM SEPARATION	2	2	2

- Parts with "•" are component parts or sub-assemblies of the assembly appearing immediately above them.
- Parts with "⊙" indicates the spare parts.

- Parts with "••" are component parts or sub-assembly with "•" appearing immediately above them.

FIG. 3 EXTERIOR COVERS (KM-2050)

2DA/2DB

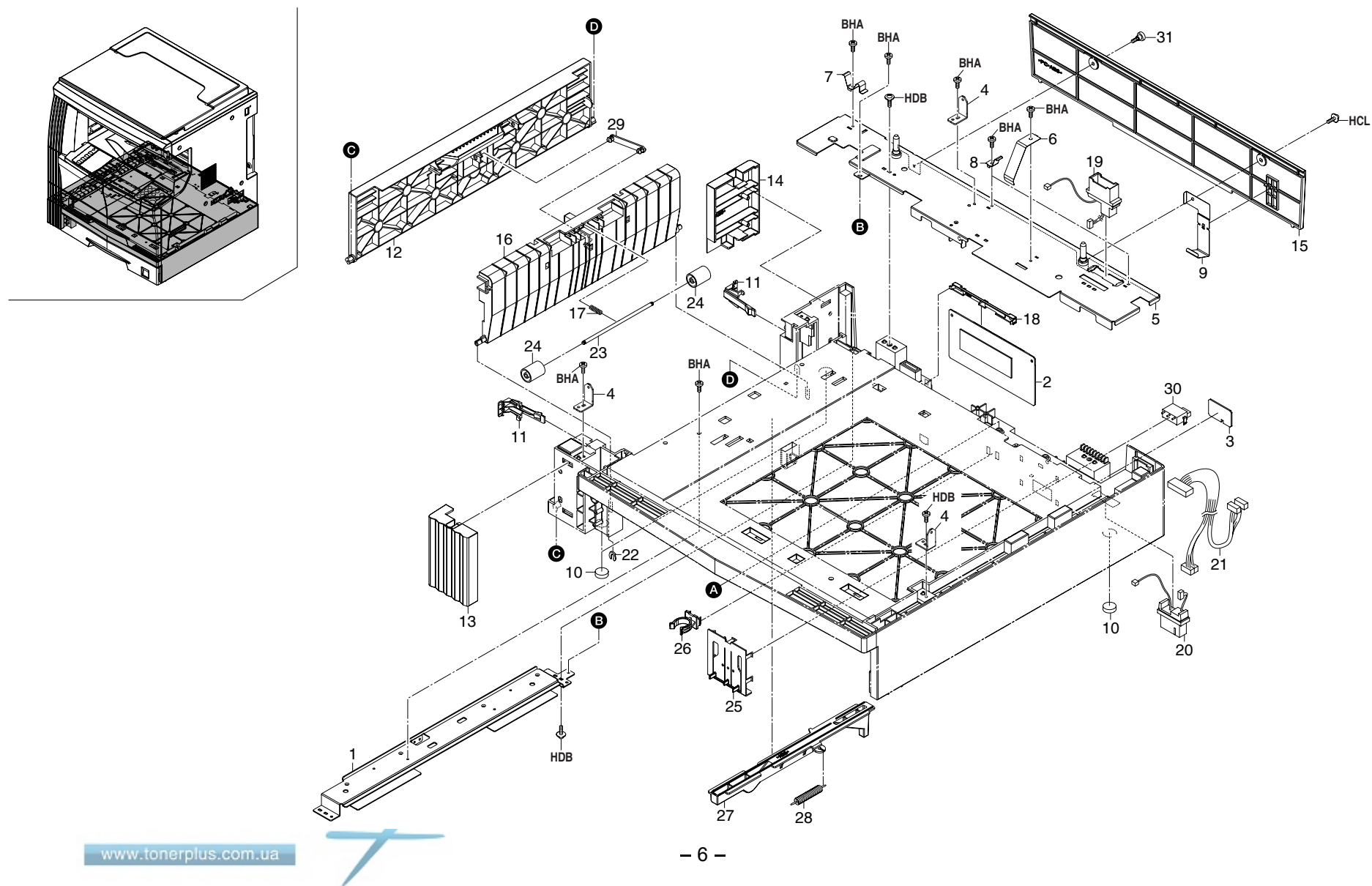


FIG. 3 EXTERIOR COVERS (KM-2050)

2DA/2DB

SP	Ref.No.	Part.No.	Alternative.	Description	Quantity		
					120V	230V	240V
	1	3HW00010		REINFORCEMENT FEED ASSY	1	1	1
⊙	2	3HW01010		MAIN PCB ASS'Y	1	1	1
⊙	3	3HW01020		HEATER BRANCH PCB ASS'Y	1	1	1
	4	3HW02050		JUNCTION PLATE MFP	3	3	3
⊙	5	3HW02040		UPPER REAR COVER	1	1	1
	6	3HW02090		GROUND PLATE CASSETTE	1	1	1
	7	3HW02110		GROUND PLATE PF	1	1	1
	8	3HW02120		GROUND PLATE PF2	2	2	2
	9	3HW02130		GROUND PLATE PF3	1	1	1
	10	3HW02140		BASE LEG	3	3	3
	11	3HW02150		HOOK COVER	2	2	2
⊙	12	3HW04010		COVER PAPER FEED	1	1	1
⊙	13	3HW04020		LEFT FRONT COVER	1	1	1
⊙	14	3HW04030		LEFT REAR COVER	1	1	1
⊙	15	3HW04040		REAR COVER	1	1	1
	16	3HW06040		GUIDE CONVEYING	1	1	1
	17	3HW06060		SPRING FEED	1	1	1
	18	3HW26010		SUPPORT PLATE PCB	1	1	1
	19	3HW27040		CONN CORD ASSY UPPER IF	1	1	1
	20	3HW27050		CONN CORD ASSY LOWER IF	1	1	1
	21	3HW27060		CONN CORD ASSY PCB-INTERF	1	1	1
⊙	22	2A806250		RING STOPPER	1	1	1
	23	2BL06211		SHAFT FEED PULLEY	1	1	1
⊙	24	2BL16080		PULLEY FEED	2	2	2
	25	2C907060		PLATE SIZE DETECTION	1	1	1
	26	2C907100		STOPPER CASSETTE	1	1	1
	27	2C907270		LEVER PICK UP	1	1	1
	28	2C907350		SPRING LEVER	1	1	1
⊙	29	3A504020		COUPLER, RELEASE	1	1	1
⊙	30	SP000360		PUSH SWITCH 03 SN	1	1	1
	31	2BL04410		PIN COVER	1	1	1

- Parts with "." are component parts or sub-assemblies of the assembly appearing immediately above them.
- Parts with "⊙" indicates the spare parts.

- Parts with ".•" are component parts or sub-assembly with ".•" appearing immediately above them.



This diagram illustrates the exploded view of a printer assembly, showing the relationship between various components and their assembly sequence. The components are numbered 1 through 44, and letters A, B, and C are used to indicate specific assembly points or stages.

**Key Components and Assembly Points:**

- 1:** Main printer body/frame.
- 2:** Top cover/lid.
- 3:** Long horizontal support bar.
- 4:** Short horizontal support bar.
- 5:** Small rectangular component, likely a sensor or switch.
- 6:** Long horizontal support bar.
- 7:** Small circular component, likely a roller or wheel.
- 8:** Small rectangular component, likely a sensor or switch.
- 9:** Small rectangular component, likely a sensor or switch.
- 10:** Small rectangular component, likely a sensor or switch.
- 11:** Small circular component, likely a roller or wheel.
- 12:** Small rectangular component, likely a sensor or switch.
- 13:** Small rectangular component, likely a sensor or switch.
- 14:** Small rectangular component, likely a sensor or switch.
- 15:** Small rectangular component, likely a sensor or switch.
- 16:** Small rectangular component, likely a sensor or switch.
- 17:** Small rectangular component, likely a sensor or switch.
- 18:** Small rectangular component, likely a sensor or switch.
- 19:** Small rectangular component, likely a sensor or switch.
- 20:** Small rectangular component, likely a sensor or switch.
- 21:** Small rectangular component, likely a sensor or switch.
- 22:** Small rectangular component, likely a sensor or switch.
- 23:** Small rectangular component, likely a sensor or switch.
- 24:** Small rectangular component, likely a sensor or switch.
- 25:** Small rectangular component, likely a sensor or switch.
- 26:** Small rectangular component, likely a sensor or switch.
- 27:** Small rectangular component, likely a sensor or switch.
- 28:** Small rectangular component, likely a sensor or switch.
- 29:** Small rectangular component, likely a sensor or switch.
- 30:** Small rectangular component, likely a sensor or switch.
- 31:** Small rectangular component, likely a sensor or switch.
- 32:** Small rectangular component, likely a sensor or switch.
- 33:** Small rectangular component, likely a sensor or switch.
- 34:** Small rectangular component, likely a sensor or switch.
- 35:** Small rectangular component, likely a sensor or switch.
- 36:** Small rectangular component, likely a sensor or switch.
- 37:** Small rectangular component, likely a sensor or switch.
- 38:** Small rectangular component, likely a sensor or switch.
- 39:** Small rectangular component, likely a sensor or switch.
- 40:** Small rectangular component, likely a sensor or switch.
- 41:** Small rectangular component, likely a sensor or switch.
- 42:** Small rectangular component, likely a sensor or switch.
- 43:** Small rectangular component, likely a sensor or switch.
- 44:** Small rectangular component, likely a sensor or switch.

**Assembly Sequence:**

- 1
- 2
- 3
- 4
- 5
- 6
- 7
- 8
- 9
- 10
- 11
- 12
- 13
- 14
- 15
- 16
- 17
- 18
- 19
- 20
- 21
- 22
- 23
- 24
- 25
- 26
- 27
- 28
- 29
- 30
- 31
- 32
- 33
- 34
- 35
- 36
- 37
- 38
- 39
- 40
- 41
- 42
- 43
- 44

**Notes:**

- Assembly points A, B, and C are indicated by dashed lines and letters.
- Components 19, 20, 39, and 43 are shown with arrows pointing to their respective assembly points.
- Components 11, 12, 13, 14, 15, 16, 17, 18, 19, 20, 21, 22, 23, 24, 25, 26, 27, 28, 29, 30, 31, 32, 33, 34, 35, 36, 37, 38, 39, 40, 41, 42, 43, and 44 are shown with arrows pointing to their respective assembly points.

FIG. 4 PAPER FEED SECTION (KM-2050)

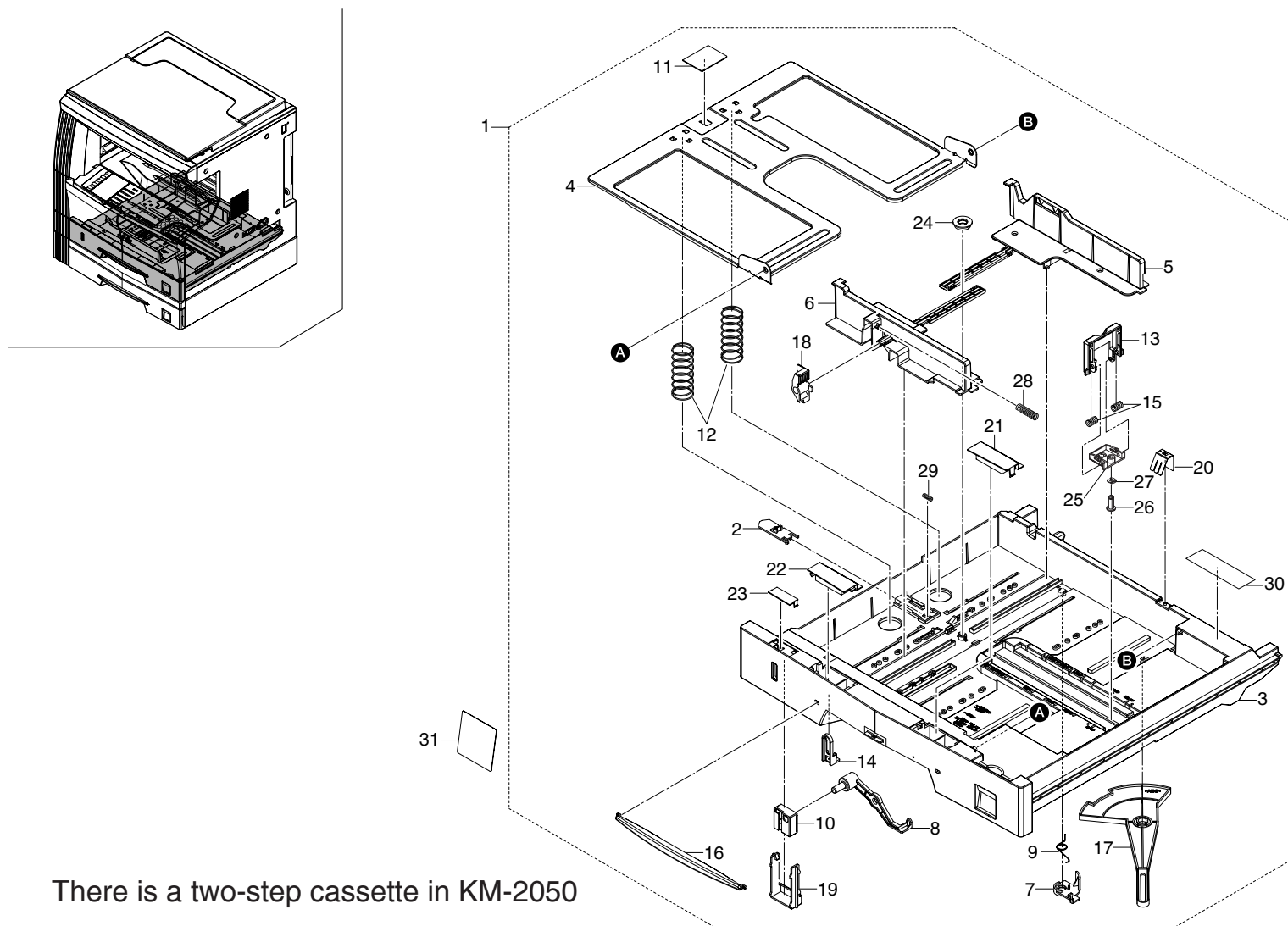
SP	Ref.No.	Part.No.	Alternative.	Description	Quantity		
					120V	230V	240V
•	1	3HW02020		LEFT RAIL CASSETTE	1	1	1
	2	3HW02080		MOUNT SW	1	1	1
•	3	3HW06020		ROLLER FEED	1	1	1
	4	3HW06030		SHAFT PAPER FEED	1	1	1
•	5	3HW06050		HOLDER FEED SHAFT	1	1	1
	6	3HW06070		GUIDE SHEET PAPER FEED	2	2	2
•	7	3HW22010		GEAR 26/90	1	1	1
	8	3HW22020		GEAR 25	2	2	2
•	9	3HW22030		MOUNT MOTOR	1	1	1
	10	3HW22040		MOUNT DRIVE	1	1	1
•	11	3HW27010		MOTOR PAPER FEED	1	1	1
	12	3HW27020		CLUTCH PAPER FEED	1	1	1
•	13	3HW27070		CONN CORD ASSY SIZE SW	1	1	1
	14	3HW27080		CONN CORD ASSY PE SENSOR	1	1	1
•	15	3HW27090		CONN CORD ASSY FEED SW	1	1	1
	16	2AR07220		PULLEY,PAPER FEED	1	1	1
•	17	2AR07230		PULLEY,SEPARATION	1	1	1
	18	2AR07240		PULLEY,LEADING FEED	1	1	1
•	19	2A806030		BUSH FEED	2	2	2
	20	2A806250		RING STOPPER	8	8	8
•	21	2C907120		ACTUATOR EMPTY	1	1	1
	22	2C907170		ACTUATOR REGIST	1	1	1
•	23	2C907230		SHAFT PICK UP B	1	1	1
	24	2C907240		PLATE PICK UP B	1	1	1
•	25	2C907250		HOLDER RETARD	1	1	1
	26	2C907260		SLIDER RAIL	2	2	2
•	27	2C907280		TORQUE LIMITER 340	1	1	1
	28	2C907300		SHAFT RETARD	1	1	1
•	29	2C907310		SPRING REGIST	1	1	1
	30	2C907320		SPRING RETARD	1	1	1
•	31	2C907340		SPRING PICK UP	2	2	2
	32	2C907400		HOLDER PULLEY A	1	1	1
•	33	2C907410		PULLEY GUIDE A	1	1	1
	34	2C907430		BUSH PAPER FEED C	2	2	2
•	35	2C907480		HOLDER SENSOR	1	1	1
	36	29807100		GEAR 16,BYPASS	2	2	2
•	37	2C927140		SWITCH CONTAINER	2	2	2
	38	2C927210		SENSOR 248NL1	2	2	2
•	39	3CY07080		BUSHING 6	2	2	2
	40	3HL07250		GEAR 20 PF FEED	1	1	1

2DA/2DB							
SP	Ref.No.	Part.No.	Alternative.	Description	Quantity		
					120V	230V	240V
•	41	M2104260		EDGING,EDS-0607U(KITAGAWA)	2	2	2
	42	M2109180		WIRE SADDLE,LWS-1S	5	5	5
	43	2BC06990		STOPPER 5,RING	1	1	1
	44	M2107120		BINDING BAND SG-130	1	1	1

- Parts with "•" are component parts or sub-assemblies of the assembly appearing immediately above them.
- Parts with "⊙" indicates the spare parts.

- Parts with "••" are component parts or sub-assembly with "•" appearing immediately above them.



There is a two-step cassette in KM-2050

FIG. 5 CASSETTE

2DA/2DB

SP	Ref.No.	Part.No.	Alternative.	Description	Quantity		
					120V	230V	240V
⊙	1	2C993010		PARTS,CT-410,SP	1	1	1
	2	•19507050		LEVER,CASSETTE BASE RELEASE	1	1	1
	3	•2C907010		CASSETTE	1	1	1
	4	•2C907020		BOTTOM CASSETTE	1	1	1
⊙	5	•2C907030		REAR CURSOR C	1	1	1
⊙	6	•2C907040		FRONT CURSOR C	1	1	1
	7	•2C907050		PLATE SIDE SW	1	1	1
	8	•2C907070		LEVER INDICATOR	1	1	1
⊙	9	•2C907090		SPRING SIDE SW	1	1	1
	10	•2C907110		MARKER INDICATOR	1	1	1
⊙	11	•2C907140		PAD CASSETTE	1	1	1
⊙	12	•2C907150		SPRING BOTTOM	2	2	2
⊙	13	•2C907190		RIGHT CURSOR A	1	1	1
	14	•2C907200		STOPPER ARM	1	1	1
	15	•2C907360		SPRING CURSOR R	2	2	2
⊙	16	•2C907370		MARKER CASSETTE	1	1	1
	17	•2C907380		TURN PLATE CASSETTE	1	1	1
⊙	18	•2C907390		LEVER CURSOR C	1	1	1
	19	•2C907490		STOPPER INDICATOR	1	1	1
	20	•2C907500		GROUND PLATE BOTTOM	1	1	1
	21	•2C907550		LID CASSETTE A	1	1	1
	22	•2C907560		LID CASSETTE B	1	1	1
	23	•2C907570		LID CASSETTE C	1	1	1
⊙	24	•34907141		GEAR 18,CASSETTE	1	1	1
⊙	25	•2C907590		HOLDER RIGHT CURSOR	1	1	1
⊙	26	•2C907600		PIN CURSOR C	1	1	1
⊙	27	•2A806250		RING STOPPER	1	1	1
⊙	28	•2C907620		SPRING LEVER F	1	1	1
⊙	29	•76508130		SPRING BELT GUIDE ROLLER	1	1	1
	30	•2C905200		LABEL CASSETTE LGR	1	1	1
⊙	31	2C905230		SHEET CASSETTE SIZE(C)	1	1	1
⊙	31	2C905240		SHEET CASSETTE SIZE(I)	1	1	1

- Parts with "•" are component parts or sub-assemblies of the assembly appearing immediately above them.
- Parts with "⊙" indicates the spare parts.

- Parts with "••" are component parts or sub-assembly with "•" appearing immediately above them.

FIG. 6 CONVEYING SECTION

2DA/2DB

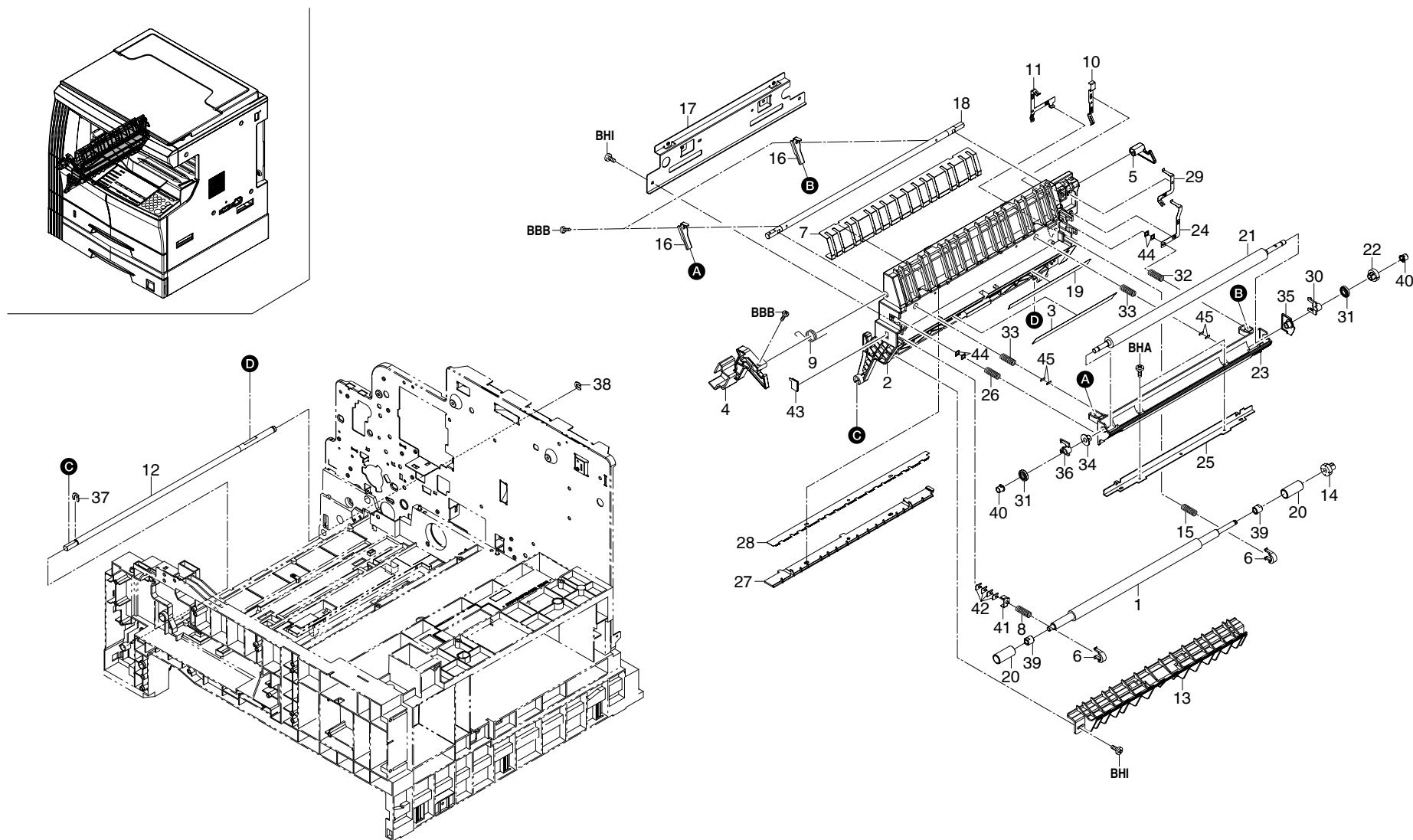


FIG. 6 CONVEYING SECTION

SP	Ref.No.	Part.No.	Alternative.	Description	Quantity		
					120V	230V	240V
⊙	1	2C916020		ROLLER REGIST LEFT	1	1	1
	2	2C916031		BASE CONVEYING	1	1	1
⊙	3	2C916040		FILM REGIST GUIDE	1	1	1
⊙	4	2C916060		LEVER CONVEYING FRONT	1	1	1
⊙	5	2C916070		LEVER CONVEYING REAR	1	1	1
⊙	6	2C916080		STOPPER BUSH REG	2	2	2
	7	2C916090		GUIDE CONVEYING	1	1	1
	8	2C916100		SPRING REGIST F	1	1	1
	9	2C916120		SPRING CONVEYING BASE	1	1	1
	10	2C916130		GROUND PLATE REG	1	1	1
	11	2C916140		GROUND PLATE CONVEYING	1	1	1
	12	2C916160		SHAFT CONVEYING	1	1	1
	13	2C916170		GUIDE FEED A	1	1	1
⊙	14	2C916180		GEAR Z15 REGIST	1	1	1
	15	2C916190		SPRING REGIST R	1	1	1
	16	2C916200		LEVER TRANS GUIDE	2	2	2
	17	2C916220		REINFORCEMENT CONVEYING	1	1	1
	18	2C916230		SHAFT CONVEYING LEVER	1	1	1
	19	2C916240		FILM REGIST GUIDE R	1	1	1
	20	2C916250		COLLAR REGIST	2	2	2
⊙	21	2C917010		ROLLER TRANSFER	1	1	1
⊙	22	2C917020		GEAR TRANSFER	1	1	1
	23	2C917030		GUIDE LEFT TRANS FRONT	1	1	1
	24	2C917040		TERMINAL PLATE TRANS	1	1	1
	25	2C917050		REINFORCEMENT TRANS GUIDE	1	1	1
	26	2C917060		SPRING TRANS F	1	1	1
⊙	27	2C917070		HOUSING STA ELIMINATION	1	1	1
⊙	28	2C917080		PLATE STA ELIMINATION	1	1	1
	29	2C917090		TERMINAL STA ELIMINATION	1	1	1
⊙	30	2C917100		BUSH TRANSFER	1	1	1
⊙	31	2C917110		COLLAR TRANS	2	2	2
	32	2C917120		SPRING TRANS R	1	1	1
	33	2C917150		SPRING GUIDE TRANS	2	2	2
	34	2C917160		BUSH TRANS GUIDE F	1	1	1
	35	2C917170		BUSH TRANS GUIDE R	1	1	1
	36	2C917180		BUSH TRANS ROLL F	1	1	1
⊙	37	2BC06910		STOPPER 6	1	1	1
⊙	38	2BC06980		STOPPER 5	1	1	1
⊙	39	2C916260		BUSH REGIST	2	2	2
⊙	40	2BL17030		COLLAR TRANS ROLLER	2	2	2

2DA/2DB							
SP	Ref.No.	Part.No.	Alternative.	Description	Quantity		
					120V	230V	240V
	41	2C916270		SPACER REG F	1	1	1
	42	2C916280		SPACER REG T0.5	4	4	4
	43	2C916290		FILM CONV BASE	1	1	1
	44	2C917200		SPACER TRANS ROLL	4	4	4
	45	2C917210		SPACER GUIDE LEFT TRANS	4	4	4

- Parts with "•" are component parts or sub-assemblies of the assembly appearing immediately above them.
- Parts with "⊙" indicates the spare parts.

- Parts with "••" are component parts or sub-assembly with "•" appearing immediately above them.

FIG. 7 PAPER FEED SECTION

2DA/2DB

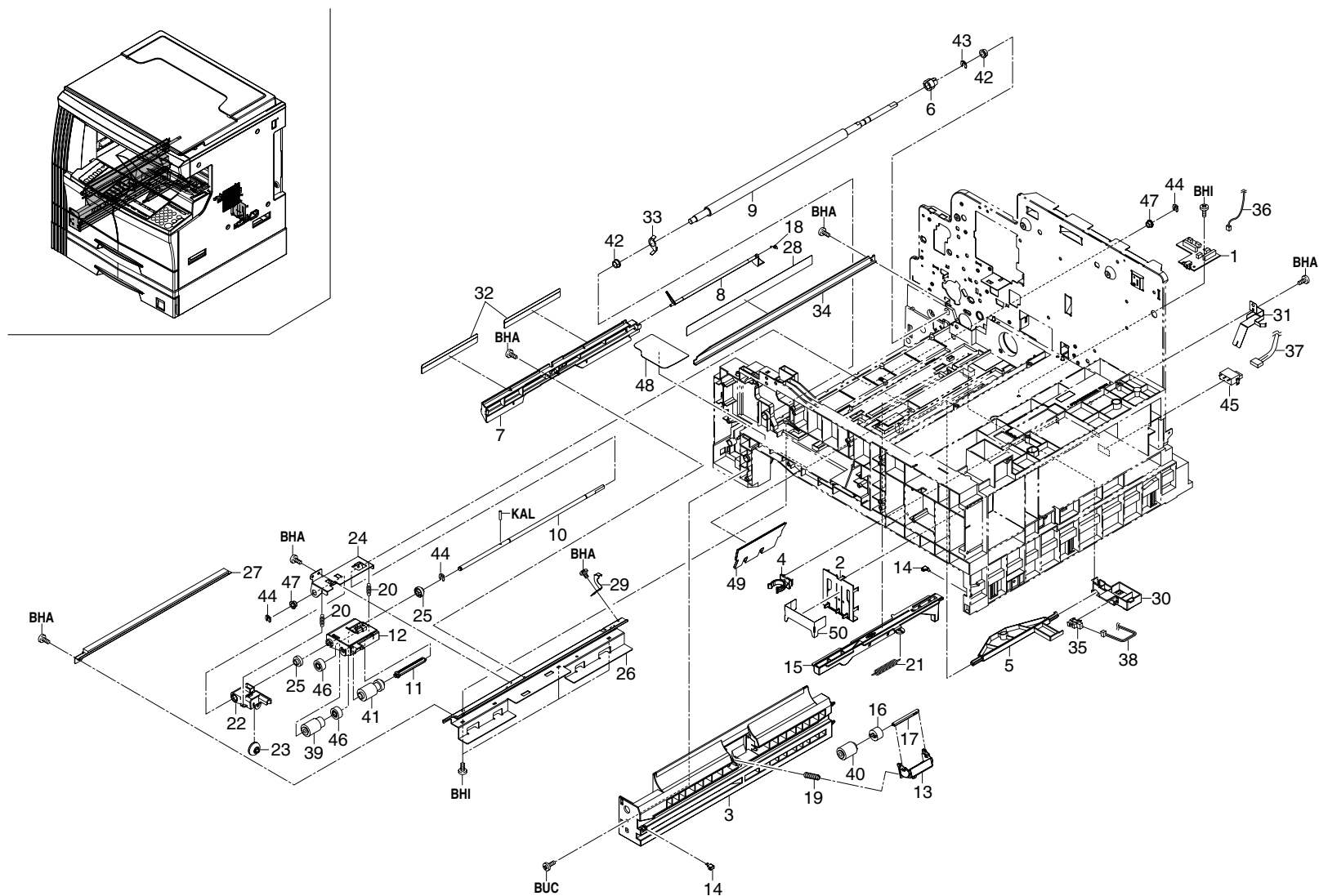


FIG. 7 PAPER FEED SECTION

SP	Ref.No.	Part.No.	Alternative.	Description	Quantity		
					120V	230V	240V
⊙	1	2C901100		PCB CASSETTE ASSY	1	1	1
	2	2C907060		PLATE SIZE DETECTION	1	1	1
	3	2C907080		LEFT RAIL CASSETTE	1	1	1
⊙	4	2C907100		STOPPER CASSETTE	1	1	1
⊙	5	2C907120		ACTUATOR EMPTY	1	1	1
⊙	6	2C907130		GEAR Z15 REGIST	1	1	1
	7	2C907160		RIGHT GUIDE REGIST	1	1	1
⊙	8	2C907170		ACTUATOR REGIST	1	1	1
	9	2C907180		RIGHT ROLL REGIST	1	1	1
	10	2C907210		SHAFT PAPER FEED	1	1	1
	11	2C907230		SHAFT PICK UP B	1	1	1
	12	2C907240		PLATE PICK UP B	1	1	1
	13	2C907250		HOLDER RETARD	1	1	1
⊙	14	2C907260		SLIDER RAIL	2	2	2
	15	2C907270		LEVER PICK UP	1	1	1
⊙	16	2C907280		TORQUE LIMITER 340	1	1	1
	17	2C907300		SHAFT RETARD	1	1	1
⊙	18	2C907290		SPRING REGIST B	1	1	1
	19	2C907320		SPRING RETARD	1	1	1
	20	2C907340		SPRING PICK UP	2	2	2
	21	2C907350		SPRING LEVER	1	1	1
	22	2C907400		HOLDER PULLEY A	1	1	1
	23	2C907410		PULLEY GUIDE A	1	1	1
	24	2C907420		HOLDER FEED SHAFT	1	1	1
⊙	25	2C907430		BUSH PAPER FEED C	2	2	2
	26	2C907440		RIGHT MOUNT REGIST	1	1	1
⊙	27	2C993210		PARTS,REGIST CLEANER,ASSY	1	1	1
	28	2C917220		FILM RIGHT TRANS A	1	1	1
	29	2C907470		GROUND PLATE REG R	1	1	1
	30	2C907480		HOLDER SENSOR	1	1	1
	31	2C907510		GROUND PLATE CASS	1	1	1
	32	2C907530		FILM REGIST R	2	2	2
	33	2C907540		GROUND PLATE REG F	1	1	1
	34	2C917140		GUIDE TRANS RIGHT	1	1	1
⊙	35	2C927210		SENSOR 248NL1	1	1	1
	36	2C927520		WIRE CASSETTE PCB	1	1	1
	37	2C927670		WIRE CASSETTE SW	1	1	1
	38	2C927750		WIRE CASSETTE PE	1	1	1
⊙	39	2AR07220		PULLEY,PAPER FEED	1	1	1
⊙	40	2AR07230		PULLEY,SEPARATION	1	1	1

					2DA/2DB		
SP	Ref.No.	Part.No.	Alternative.	Description	Quantity		
					120V	230V	240V
⊙	41	2AR07240		PULLEY,LEADING FEED	1	1	1
⊙	42	2BC06510		BUSHING 8	2	2	2
⊙	43	2BC06910		STOPPER 6	1	1	1
⊙	44	2BC06980		STOPPER 5	3	3	3
⊙	45	SP000360		PUSH SWITCH 03 SN	1	1	1
⊙	46	29807100		GEAR 16,BYPASS	2	2	2
⊙	47	3CY07080		BUSHING 6	2	2	2
	48	2C907610		SHEET TONER TANK	1	1	1
	49	2C907580		FILM BASE RIB	2	2	2
	50	2C907640		STOPPER PLATE SIZE	1	1	1

- Parts with "•" are component parts or sub-assemblies of the assembly appearing immediately above them.
- Parts with "⊙" indicates the spare parts.

- Parts with "••" are component parts or sub-assembly with "•" appearing immediately above them.



FIG. 8 BYPASS SECTION

2DA/2DB

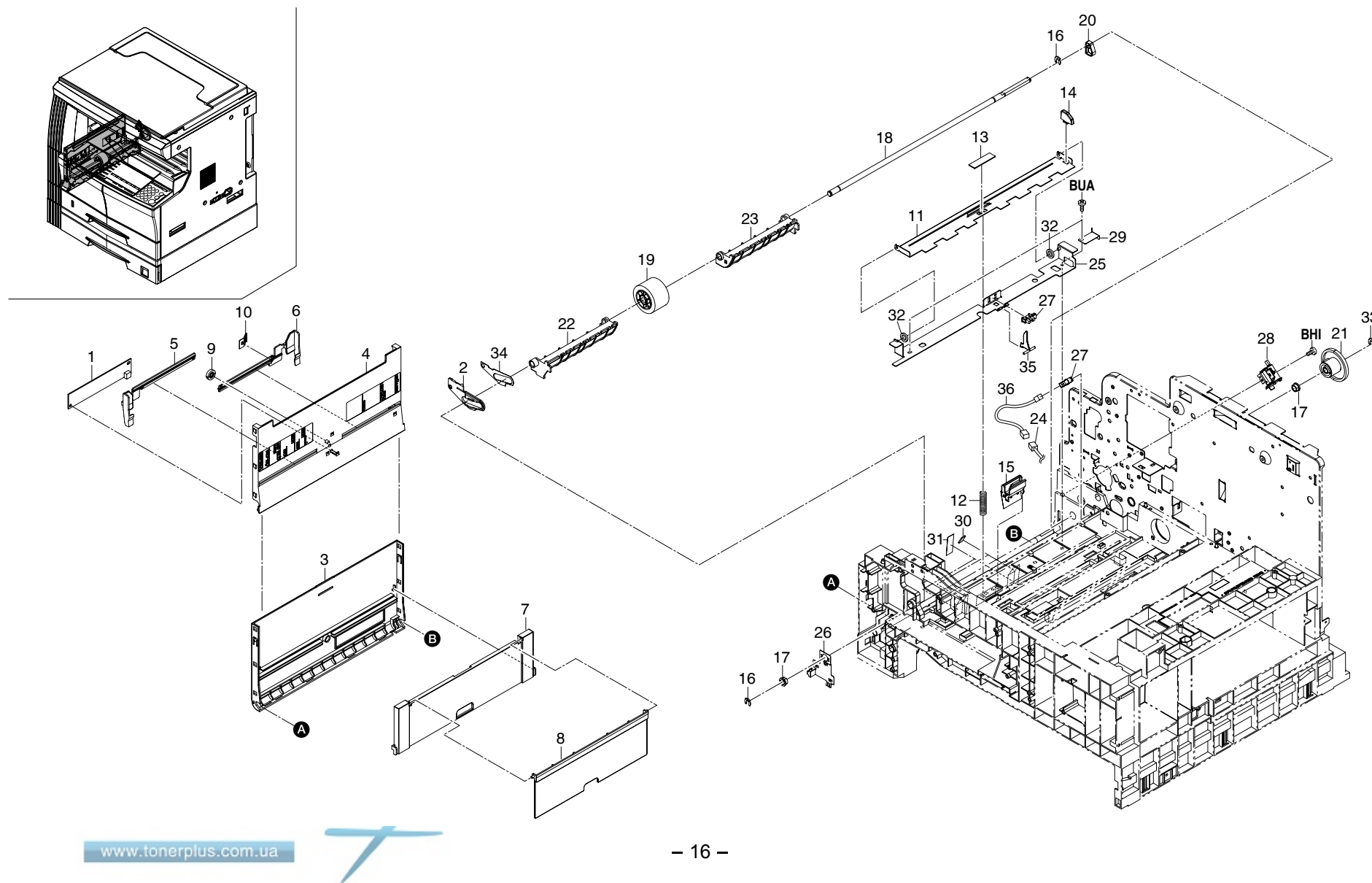


FIG. 8 BYPASS SECTION

2DA/2DB

SP	Ref.No.	Part.No.	Alternative.	Description	Quantity		
					120V	230V	240V
⊙	1	2C901050	302DA27531	PCB MPF SIZE ASSY	1	1	1
	2	2C904360		STRAP LEFT COVER C	1	1	1
⊙	3	2C906010		COVER BYPASS	1	1	1
⊙	4	2C906020		TABLE BYPASS	1	1	1
⊙	5	2C906030		FRONT CURSOR BYPASS	1	1	1
⊙	6	2C906040		REAR CURSOR BYPASS	1	1	1
⊙	7	2C906050		BYPASS SUB TABLE A	1	1	1
⊙	8	2C906060		BYPASS SUB TABLE B	1	1	1
⊙	9	2C906080		GEAR 18 BYPASS	1	1	1
	10	2C906090		TERMINAL PAPER SIZE	1	1	1
	11	2C906101		LIFT PLATE BYPASS	1	1	1
	12	2C906110		SPRING BYPASS LIFT	1	1	1
⊙	13	2C906120		SHEET BYPASS LIFT	1	1	1
⊙	14	2C906130		STOPPER BYPASS	1	1	1
⊙	15	2C993140		PARTS,BYPASS PAD,SP	1	1	1
⊙	16	2BC06910		STOPPER 6	2	2	2
⊙	17	2BC06510		BUSHING 8	2	2	2
	18	2C906171		SHAFT BYPASS	1	1	1
⊙	19	2C993130		PARTS,BYPASS PULLEY,SP	1	1	1
⊙	20	2C906190		CAM BYPASS	1	1	1
⊙	21	2C906200		CLUTCH BYPASS FEED	1	1	1
	22	2C906210		BYPASS PAPER GUIDE F	1	1	1
	23	2C906220		BYPASS PAPER GUIDE R	1	1	1
	24	2DA27531		WIRE MPF	1	1	1
	25	2C906241		MOUNT LIFT PLATE	1	1	1
	26	2C906250		GROUND PLATE BYPASS	1	1	1
⊙	27	2C927210		SENSOR 248NL1	2	2	2
⊙	28	2C927050		SOLENOID BYPASS	1	1	1
	29	2C906280		GROUND PLATE LIFT	1	1	1
	30	2C906290		SHEET BYPASS GUIDE	2	2	2
⊙	31	2C906300		SEAL BYPASS GUIDE	2	2	2
	32	2C906310		SEAL BYPASS LIFT	2	2	2
⊙	33	2BC06980		STOPPER 5	1	1	1
	34	2C904490		PLATE FRONT STRAP	1	1	1
	35	2DA06010		ACTUATOR BYPASS	1	1	1
	36	2DA27580	302DA27580	WIRE MPF SW	1	1	1

- Parts with "•" are component parts or sub-assemblies of the assembly appearing immediately above them.
- Parts with "⊙" indicates the spare parts.

- Parts with "••" are component parts or sub-assembly with "•" appearing immediately above them.

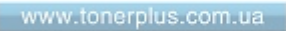


FIG. 9 EXIT SECTION

2DA/2DB

SP	Ref.No.	Part.No.	Alternative.	Description	Quantity		
					Qty	230V	240V
⊙	1	2C901060		PCB EJECT SW ASSY	1	1	1
⊙	2	2C904050		LEFT COVER	1	1	1
	3	2C904210		STOPPER LEFT COVER F	1	1	1
	4	2C904220		STOPPER LEFT COVER R	1	1	1
	5	2C904231		STRAP LEFT COVER A	1	1	1
	6	2C904241		STRAP LEFT COVER B	1	1	1
	7	2C904250		SHAFT HOOK	1	1	1
	8	2C904260		HOOK LEFT COVER F	1	1	1
	9	2C904270		HOOK LEFT COVER R	1	1	1
	10	2C904280		JUNCTION PLATE HOOK	1	1	1
	11	2C904350		SPRING LEFT HOOK	1	1	1
	12	2C904390		PLATE LEFT SW	1	1	1
	13	2C904550		CUT WASHER 5	2	2	2
	14	2C904430		PLATE LEFT HOOK	1	1	1
⊙	15	2C905090		LABEL HIGH TEMP	1	1	1
	16	2C921400		SHOULDER SCREW EXIT	2	2	2
⊙	17	2C921010		ROLLER EXIT INNER	1	1	1
⊙	18	2C921020		ROLLER FEED SHIFT	1	1	1
⊙	19	2C921040		PULLEY FEED SHIFT	4	4	4
	20	2C921050		GUIDE SHIFT	1	1	1
	21	2C921061		GUIDE SEPARATE	1	1	1
	22	2C921071		HOUSING EXIT UPPER	1	1	1
	23	2C921080		HOUSING EXIT LOWER	1	1	1
	24	2C921091		GUIDE EXIT LOWER	1	1	1
⊙	25	2C921100		ACTUATOR EXIT INNER	1	1	1
⊙	26	2C921110		ACTUATOR EXIT LEFT	1	1	1
⊙	27	2C921120		GEAR 23 EXIT	1	1	1
	28	2C921150		ARM SHIFT	1	1	1
⊙	29	2C921160		ARM SEPARATE	1	1	1
	30	2C921180		ARM LINK	1	1	1
	31	2C921190		SPRING PULLEY INNER	2	2	2
	32	2C921200		SPRING PULLEY FEED SHIFT	4	4	4
	33	2C921221		SPRING GUIDE DU	2	2	2
	34	2C921231		GUIDE DU	1	1	1
	35	2C921240		ARM SHIFT B	1	1	1
	36	2C921390		PLATE EXIT HOLDER	1	1	1
	37	2C921260		PLATE EARTH EXIT 2	1	1	1
	38	2C921270		ARM SEPARATE B	1	1	1
	39	2C921280		SPRING SEPARATE	1	1	1
	40	2C921290		SPRING LINK	1	1	1

SP	Ref.No.	Part.No.	Alternative.	Description	Quantity		
					Qty	230V	240V
	41	2C921301	302C921301	BRACKET EXIT	1	1	1
	42	2C921310		PLATE EARTH EXIT B	1	1	1
	43	2C921330		SPRING ACTUATOR INNER	1	1	1
⊙	44	2C921340		BELT EXIT	1	1	1
⊙	45	2C921350		PULLEY EXIT	2	2	2
⊙	46	2C921360		PULLEY EJECT	4	4	4
	47	2C921370		STOPPER SE	1	1	1
⊙	48	2BC06980		STOPPER 5	3	3	3
	49	2BL21260		SPRING ACTUATOR L	1	1	1
⊙	50	2BT11070	5MVX111DN007	STOPPER 3	2	2	2
⊙	51	3CY07080		BUSHING 6	4	4	4
⊙	52	34821210		STATIC ELIMINATOR B,EJECT	1	1	1
	53	2C927530		WIRE EJECT	1	1	1
	54	2C904440		SPRING LEFT COVER	1	1	1
⊙	55	2C904500		PIN LEFT COVER	1	1	1
⊙	56	2C904460		COVER FRONT STRAP	1	1	1
⊙	57	2C905170		LABEL BYPASS TABLE	1	1	1
	58	2C921380		SPRING PULLEY EJECT	2	2	2
⊙	59	2C905270		LABEL BYPASS JAM	1	1	1

- Parts with "•" are component parts or sub-assemblies of the assembly appearing immediately above them.
- Parts with "⊙" indicates the spare parts.

- Parts with "••" are component parts or sub-assembly with "•" appearing immediately above them.

FIG. 10 SCANNER SECTION

2DA/2DB

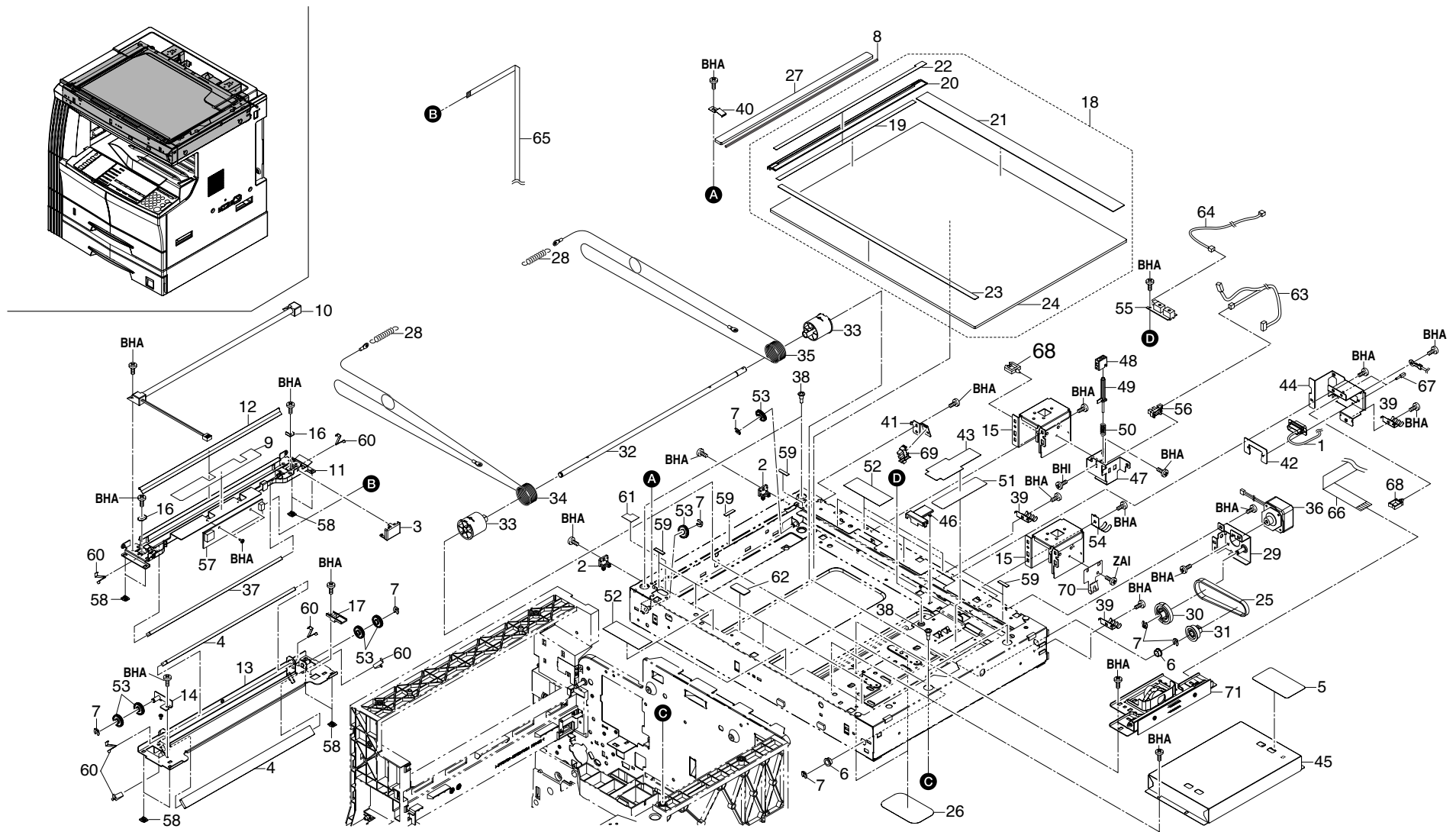


FIG. 10 SCANNER SECTION

SP	Ref.No.	Part.No.	Alternative.	Description	Quantity		
					120V	230V	240V
	1	2C927540		WIRE DP	1	1	1
	2	18512340		GUIDE,SCANNER WIRE	2	2	2
	3	2AV12080		GUIDE FFC1	1	1	1
⊙	4	2AV12160		MIRROR B	2	2	2
⊙	5	2C905160		LABEL GLASS CAUTION	1	1	1
⊙	6	2BC06510		BUSHING 8	2	2	2
⊙	7	2BC06980		STOPPER 5	7	7	7
⊙	8	2C912700		SPONGE ORIGINAL SIZE	1	1	1
	9	2C912180		FILM FRAME A	1	1	1
⊙	10	2C912090		LAMP SCANNER YG	1	1	1
	11	2C912100		MIRROR FRAME A	1	1	1
	12	2C912110		REFLECTOR SCANNER	1	1	1
	13	2C912120		MIRROR FRAME B	1	1	1
	14	2C912130		ADJUSTING PLATE B	1	1	1
	15	2C912141		MOUNT BASE DF HINGE LEFT	2	2	2
	16	2C912150		RETAINER WIRE	2	2	2
	17	2C912160		GUIDE FFC B	1	1	1
⊙	18	2C993170		PARTS,CONTACT GLASS,M(SP)	1	1	1
⊙	18	2C993180		PARTS,CONTACT GLASS,I(SP)	1	1	1
	19	•2C912190		STANDARD PLATE SHADING	1	1	1
	20	•2C912200		LEFT SIZE INDICATOR	1	1	1
	21	•2C912210		REAR SIZE INDICATOR(M)	1	1	1
	21	•2C912460		REAR SIZE INDICATOR(I)	1	1	1
	22	•2C912440		LABEL SIZE (METRIC)	1	1	1
	22	•2C912450		LABEL SIZE (INCH)	1	1	1
	23	•2C912600		FRONT SIZE INDICATOR	1	1	1
	24	•2C912250		CONTACT GLASS	1	1	1
⊙	25	2C912260		BELT SCANNER	1	1	1
	26	2C912270		LOWER SEAL SCANNER	2	2	2
⊙	27	2C912280		CONTACT GLASS ADF	1	1	1
	28	2C912290		SPRING SCANNER TENSION	2	2	2
	29	2C912300		MOTOR PLATE SCANNER	1	1	1
⊙	30	2C912310		GEAR Z18/39	1	1	1
⊙	31	2C912320		GEAR Z36	1	1	1
⊙	32	2C912330		SHAFT MOTOR DRIVE	1	1	1
⊙	33	2C912340		DRUM PULLEY	2	2	2
	34	2C912350		FRONT WIRE SCANNER	1	1	1
	35	2C912360		REAR WIRE SCANNER	1	1	1
⊙	36	2C912380		MOTOR SCANNER	1	1	1
⊙	37	2C912390		MIRROR A	1	1	1

SP	Ref.No.	Part.No.	Alternative.	Description	Quantity		
					120V	230V	240V
	38	2C912400		PIN SCANNER RETAINING	4	4	4
	39	2C912410		GROUND PLATE SCANNER	3	3	3
	40	2C912420		HOLDER GLASS DF	1	1	1
	41	2C912220		MOUNT PI	1	1	1
	42	2C912470		PLATE DSUB	1	1	1
	43	2C912480		HOLDER CCD WIRE	1	1	1
	44	2C912490		MOUNT DSUB	1	1	1
	45	2C912580		COVER ISU	1	1	1
	46	2C912230		HOLDER FFC A	1	1	1
	47	2C912610		MOUNT RELEASE SWITCH	1	1	1
	48	2C912620		GUIDE RELEASE SWITCH	1	1	1
	49	2C912640		SHAFT RELEASE SWITCH	1	1	1
	50	2C912650		SPRING RELEASE SWITCH	1	1	1
	51	2C912660		GUIDE CCD WIRE	1	1	1
	52	2C912670		SHIELD SCANNER FRAME	4	4	4
⊙	53	2C912680		PULLEY SCANNER	6	6	6
⊙	54	2C912690		GROUND PLATE SCANNER B	1	1	1
⊙	55	2C927090		SENSOR ORIGINAL	1	1	1
⊙	56	2C927210		SENSOR 248NL1	1	1	1
⊙	57	2C928040		PCB LAMP INVERTER	1	1	1
	58	2DC12230		SLIDER SCANNER	8	8	8
⊙	59	29812291		CUSHION,CONTACT GLASS	9	9	9
	60	2BC12190		SPRING,MIRROR HOLDER	6	6	6
	61	2C912710		SHIELD SCANNER FRAME B	1	1	1
	62	2C912720		SHIELD BASE	1	1	1
	63	2C927550		WIRE SCANNER PI	1	1	1
	64	2C927560		WIRE ORIGINAL SIZE	1	1	1
⊙	65	2C927580		FFC INVERTER	1	1	1
⊙	66	2DA27510		FFC CCD	1	1	1
	67	M0208010		SPACER,SFS-2.6S-B1WM(JST)	2	2	2
	68	M2109000		WIRE SADDLE,WS-1NS	2	2	2
⊙	69	2DC27180		SWITCH PI	1	1	1
	70	2C912730		SHIELD WIRE PANEL	1	1	1
⊙	71	2DA93010	302DA93010	PART,ISU ASS'Y,SP	1	1	1

- Parts with "•" are component parts or sub-assemblies of the assembly appearing immediately above them.
- Parts with "⊙" indicates the spare parts.

- Parts with "••" are component parts or sub-assembly with "•" appearing immediately above them.



FIG. 11 IMAGING UNIT

2DA/2DB

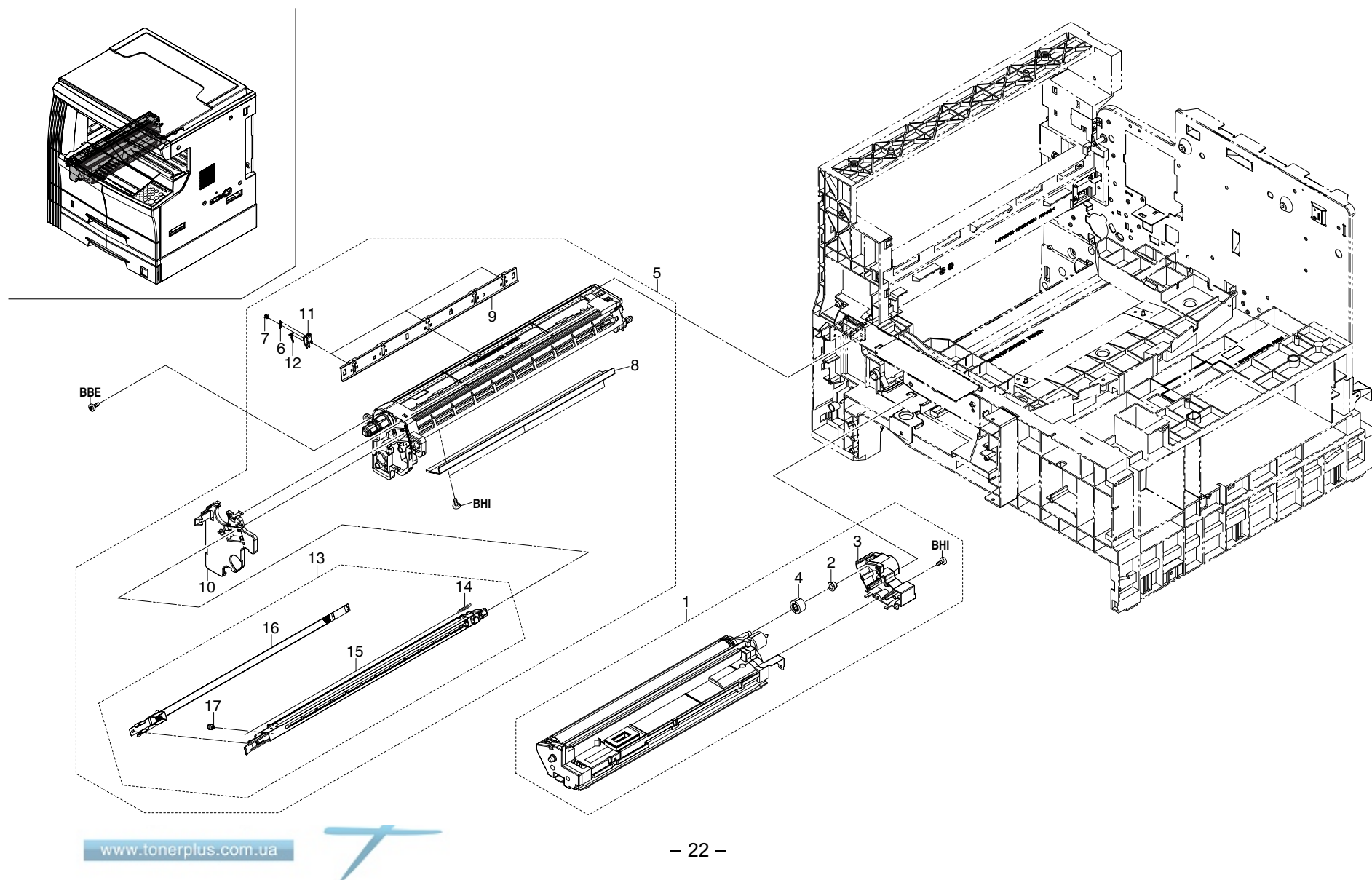


FIG. 11 IMAGING UNIT

2DA/2DB

SP	Ref.No.	Part.No.	Alternative.	Description	Quantity		
					120V	230V	240V
⊙	1	2C993030		PARTS,DV-410,SP	1	1	1
	2	•2BZ22230		BUSH GEAR Z26H49515M0001A4	1	1	1
	3	•2C914080		REAR COVER DLP	1	1	1
	4	•2C914280		GEAR Z20H B	1	1	1
	5	2C982010		SET MK-410 (OPTION)	1	1	1
	6	•2AR18280		SPRING,CLAW SEPARATION	3	3	3
	7	•2A118370		PULLEY,DRUM SEPARATION	3	3	3
	8	•2C918010		BLADE CLEANING	1	1	1
	9	•2C918040		LOWER SEAL CLEANING	1	1	1
	10	•2C918050		FRONT COVER CLEANING	1	1	1
	11	•2C918340		HOLDER CLAW	3	3	3
	12	•2C918370		CLAW SEPARATION	3	3	3
⊙	13	•2C993020		PARTS,MC-410,SP	1	1	1
	14	••2BZ02300		SPRING WIRE	1	1	1
	15	••2CK10060		CORONA WIRE MCH	1	1	1
	16	••2C910040		GRID	1	1	1
	17	••33910230		PIN CHARGER	1	1	1

- Parts with "•" are component parts or sub-assemblies of the assembly appearing immediately above them.
- Parts with "⊙" indicates the spare parts.

- Parts with "••" are component parts or sub-assembly with "•" appearing immediately above them.



FIG. 12 FUSER UNIT

2DA/2DB

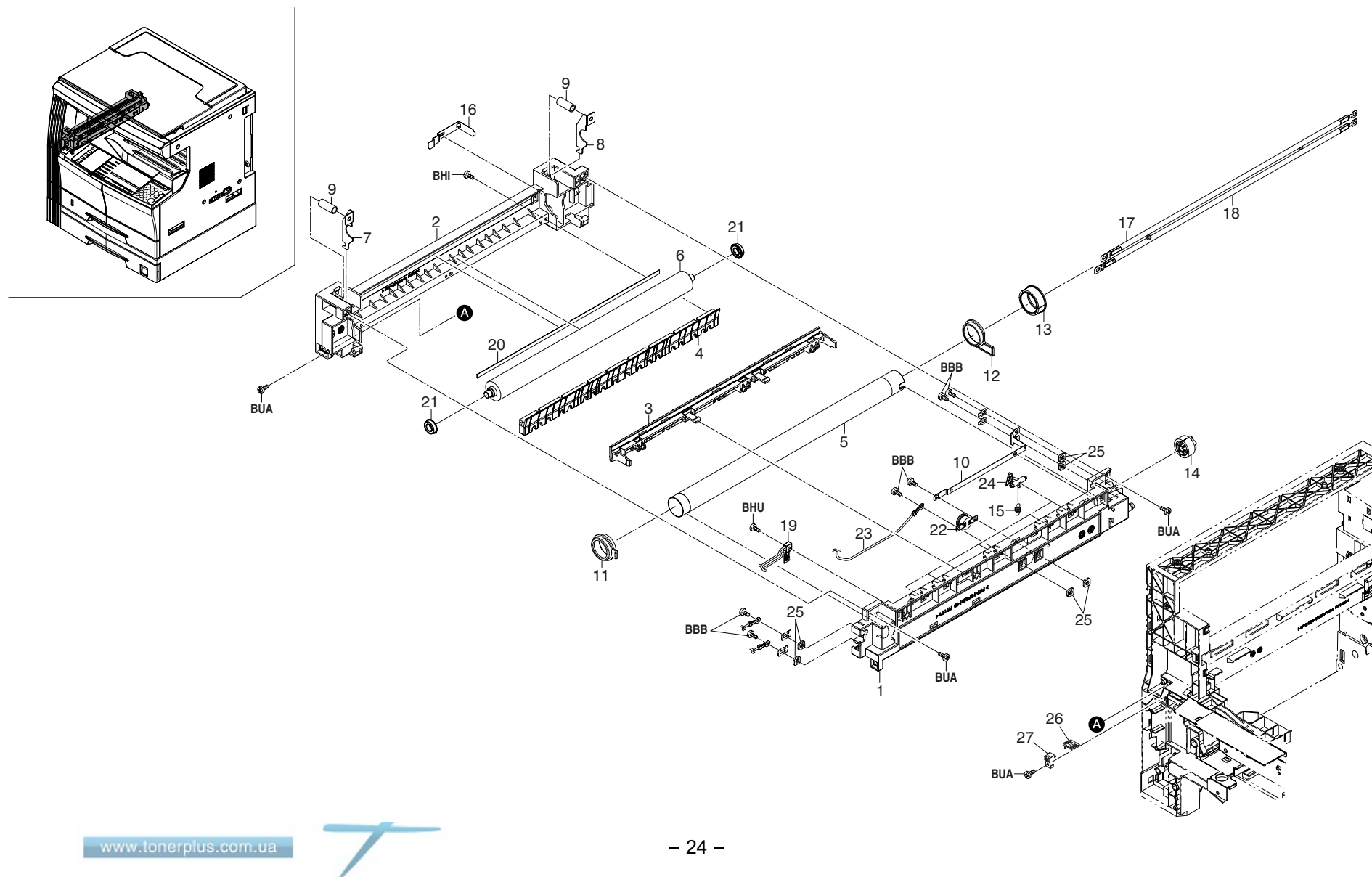


FIG. 12 FUSER UNIT

2DA/2DB

SP	Ref.No.	Part.No.	Alternative.	Description	Quantity		
					120V	230V	240V
⊙		2C993051	302C993051	PARTS,FK-410(A),SP	1		
⊙		2C993061	302C993061	PARTS,FK-410(E),SP		1	1
	1	•2C920010		RIGHT FRAME FUSER	1	1	1
	2	•2C920020		LEFT FRAME FUSER	1	1	1
	3	•2C920030		REAR GUIDE FUSER	1	1	1
	4	•2C920040		FRONT GUIDE FUSER	1	1	1
⊙	5	•2C920050		ROLLER HEAT	1	1	1
⊙	6	•2C920060		ROLLER PRESS	1	1	1
	7	•2C920110		FRONT PRESSING PLATE	1	1	1
	8	•2C920120		REAR PRESSING PLATE	1	1	1
	9	•2C920130		SPRING PRESSURE	2	2	2
	10	•2C920140		PLATE HEATER FUSER	1	1	1
⊙	11	•2C920150		FRONT BUSH HEAT ROLLER	1	1	1
⊙	12	•2C920160		REAR BUSH HEAT ROLLER	1	1	1
⊙	13	•2C920170		GEAR Z38 HEAT ROLLER	1	1	1
⊙	14	•2C920180		GEAR FUSER Z28	1	1	1
⊙	15	•2C920190		SPRING SEPARATOR	5	5	5
	16	•2C920200		GROUND PLATE PRESS	1	1	1
⊙	17	•2C920230		HEATER M120 FUSER	1		
⊙	17	•2C920250		HEATER M230 FUSER		1	1
⊙	18	•2C920240		HEATER S120 FUSER	1		
⊙	18	•2C920260		HEATER S230 FUSER		1	1
⊙	19	•2C920310		THERMISTOR FUSER	1	1	1
	20	•2C920320		SEAL DISCHAGER	1	1	1
⊙	21	•2C920330		BEARING PRESSURE	2	2	2
⊙	22	•2C920340		THERMOCUT 180 FUSER	1	1	1
	23	•2C927690		WIRE FUSER UNIT	1	1	1
⊙	24	•2BR20240		SEPARATOR ASSY	5	5	5
	25	•2BY20050		NUT FUSER A	6	6	6
⊙	26	•2DA20010	302DA20010	SPACER FUSER UNIT	1	1	1
⊙	27	•2DA20020	302DA20020	STOPPER FUSER SPACER	1	1	1

- Parts with "•" are component parts or sub-assemblies of the assembly appearing immediately above them.
- Parts with "⊙" indicates the spare parts.

- Parts with "••" are component parts or sub-assembly with "•" appearing immediately above them.

FIG. 13 DRIVING & COOLING SECTION

2DA/2DB

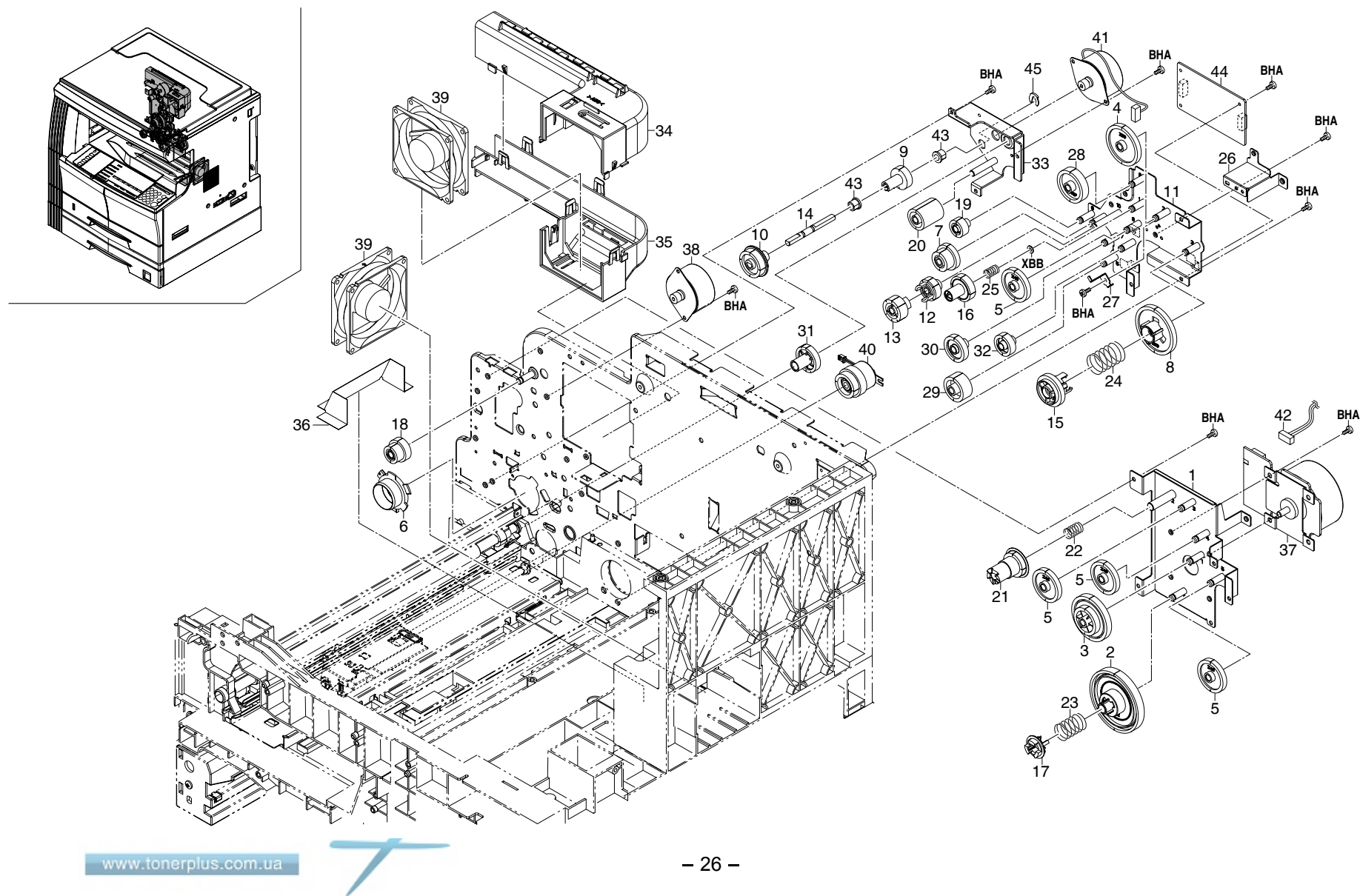


FIG. 13 DRIVING & COOLING SECTION

SP	Ref.No.	Part.No.	Alternative.	Description	Quantity		
					120V	230V	240V
	1	2C922010		MOUNT DRIVE UNIT	1	1	1
⊙	2	2C922020		GEAR 122	1	1	1
⊙	3	2C922030		GEAR 88/34	1	1	1
⊙	4	2C922040		GEAR 50	1	1	1
⊙	5	2C922050		GEAR 40	4	4	4
⊙	6	2C922060		POSITIONING BUSH DRUM	1	1	1
⊙	7	2C922070		GEAR 30/23	1	1	1
⊙	8	2C922080		GEAR 60	1	1	1
⊙	9	2C922100		GEAR 25 DPX	1	1	1
⊙	10	2C922110		GEAR 32 DPX	1	1	1
	11	2C922130		MOUNT CONT DRIVE	1	1	1
⊙	12	2C922140		GEAR 25 DEV	1	1	1
⊙	13	2C922150		GEAR 26 DEV	1	1	1
⊙	14	2C922160		SHAFT DPX DRIVE	1	1	1
⊙	15	2C922170		COUPLING CONT P	1	1	1
⊙	16	2C922180		COUPLING CONT S	1	1	1
⊙	17	2C922190		COUPLING DRUM	1	1	1
⊙	18	2C922200		GEAR 43/20	1	1	1
⊙	19	2C922210		GEAR 20	1	1	1
⊙	20	2C922220		GEAR 25	1	1	1
⊙	21	2C922230		GEAR 29 FIX JOINT	1	1	1
	22	2C922240		SPRING FIX JOINT	1	1	1
	23	2C922250		SPRING DRUM COUPLING	1	1	1
	24	2C922260		SPRING CONT P	1	1	1
	25	2C922270		SPRING CONT S	1	1	1
	26	2C922280		MOUNT HV PCB	1	1	1
	27	2C922290		HOLDER GEAR	1	1	1
⊙	28	2C922300		GEAR 40 FIXJOINT	1	1	1
⊙	29	2C922330		GEAR 30 PF	1	1	1
⊙	30	2C922340		GEAR 31	1	1	1
⊙	31	2C922350		GEAR 51 REG	1	1	1
⊙	32	2C922360		GEAR 25 PF	1	1	1
	33	2C922370		MOUNT REG MOTOR	1	1	1
	34	2C923010		UPPER DUCT	1	1	1
	35	2C923020		LOWER DUCT	1	1	1
	36	2C923030		FILM COOLING	1	1	1
⊙	37	2C927010		MOTOR MAIN	1	1	1
⊙	38	2C927020		MOTOR EJECT	1	1	1
⊙	39	2C927070		FAN COOLING 80-25	2	2	2
⊙	40	2C927190		CLUTCH FEED	1	1	1

					2DA/2DB		
SP	Ref.No.	Part.No.	Alternative.	Description	Quantity		
					120V	230V	240V
⊙	41	2C927220		MOTOR REGISTRATION	1	1	1
	42	2C927760		WIRE MAIN MOTOR	1	1	1
⊙	43	3CY07080		BUSHING 6	2	2	2
⊙	44	2C901190		PCB REGISTRATION ASSY	1	1	1
⊙	45	2A806250		RING STOPPER	1	1	1

- Parts with "•" are component parts or sub-assemblies of the assembly appearing immediately above them.
- Parts with "⊙" indicates the spare parts.

- Parts with "••" are component parts or sub-assembly with "•" appearing immediately above them.

FIG. 14 ELECTRICAL COMPONENTS

2DA/2DB

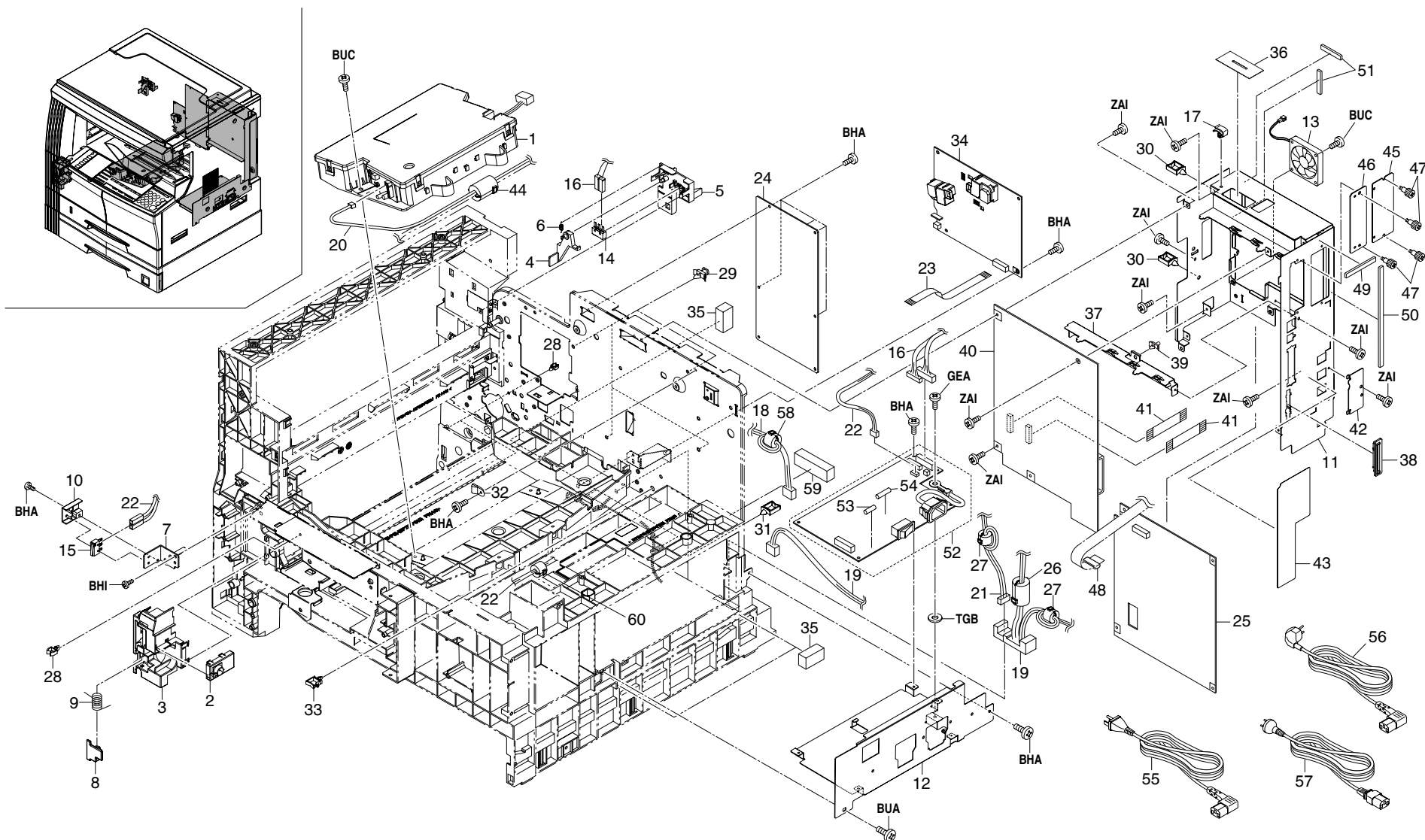


FIG. 14 ELECTRICAL COMPONENTS

SP	Ref.No.	Part.No.	Alternative.	Description	Quantity		
					120V	230V	240V
⊙	1	2C993090		PARTS,LSU ASS'Y,SP	1	1	1
⊙	2	2C901170		DISPOSAL SENSOR ASSY	1	1	1
	3	2C918400		HOLDER SENSOR B	1	1	1
	4	2C904300		ARM INTERLOCK SW	1	1	1
	5	2C904310		MOUNT INTERLOCK SW	1	1	1
	6	2C904340		SPRING LEFT INTERLOCK	1	1	1
	7	2C916150		PIN CONVEYING HOOK	1	1	1
	8	2C918350		DETECTION PLATE	1	1	1
	9	2C918360		SPRING DETECTION	1	1	1
	10	2C926070		HOLDER INTERLOCK SW	1	1	1
	11	2DA26500		SHIELD MAIN	1	1	1
	12	2C926510		MOUNT POWER SOURCE	1	1	1
⊙	13	2DA27020		FAN COOLING 50-10	1	1	1
⊙	14	2C927170		SWITCH INTERLOCK L	1	1	1
⊙	15	2C927180		SWITCH INTERLOCK F	1	1	1
	16	2C927510		WIRE ENGINE	1	1	1
	17	M2109330		WIRE SADLE,YMC-10-0	1	1	1
	18	2C927600		WIRE FUSER	1	1	1
	19	2C927610		WIRE DESK POWER	1	1	1
	20	2C927710		WIRE PD	1	1	1
	21	2C927660		WIRE DESK	1	1	1
	22	2C927680		WIRE FRONT SW	1	1	1
⊙	23	2C927740		FFC HVU	1	1	1
⊙	24	2DA93020	302DA93020	PARTS,PCB ENGINE ASS'Y,SP (KM-2050)	1	1	1
⊙	24	2DB93010	302DB93010	PARTS,PCB ENGINE ASS'Y,SP (KM-1650)	1	1	1
⊙	25	2DA93030	302DA93030	PARTS,PCB MAIN ASS'Y,SP	1	1	1
	26	2C927230		CORE SFT-72SNB-026K	1	1	1
	27	2A627940		CORE 10-20X10	2	2	2
	28	M2105740		MINIATURE CLAMP,UAMS-05S-2	4	4	4
	29	M2108130		SPACER,KGPS-4S	3	3	3
	30	M2109000		WIRE SADDLE,WS-1NS	2	2	2
	31	M2109020		WIRE SADDLE,WS-2WS	1	1	1
	32	M7005030		CLAMP,EMT-5N(TAKEUCHI)	1	1	1
	33	M70A5020		CLAMP,FCC-125EM513(TAKEUCHI)	1	1	1
⊙	34	2C928051		PCB HIGH VOLTAGE	1	1	1
	35	2BL14480		SEAL WIRE	4	4	4
	36	2C926160		SHIELD CCD WIRE	1	1	1
	37	2DA26510		RAIL SHIELD	1	1	1
	38	2DA26520		GUIDE CF	1	1	1
	39	M2108800		SPACER,KGPS-3.5S(KITAGAWA)	1	1	1

SP	Ref.No.	Part.No.	Alternative.	Description	Quantity		
					120V	230V	240V
⊙	40	2DA01070	302DA01070	PCB PRINTER ASSY	1	1	1
⊙	41	2DA27560		FFC MAIN	2	2	2
	42	2BJ26120		LID MODULAR	1	1	1
	43	2DA26550		LABEL INTERFACE	1	1	1
	44	2AV27440		CORE 15-26X13	1	1	1
	45	2DA26540		LID NETWORK	1	1	1
	46	2DD26070		PLATE OPTION	1	1	1
	47	3BH26030		PIN,OPTION	4	4	4
	48	YB000510	7YBFP007C001H01	FERRITE CORE	1	1	1
⊙	49	ZG000470	7ZGSTG15C050H01	SHIELD GASKET	1	1	1
	50	ZG000480	7ZGSTG15C180H01	SHIELD GASKET	1	1	1
	51	ZG000500	7ZGSTG710050H01	SHIELD GASKET	2	2	2
⊙	52	2DA28070		PCB LVU 100	1		
⊙	52	2DA28080		PCB LVU 200		1	1
⊙	53	•M5561000		FUSE,CES6-N1(SOC)	1		
⊙	53	•M1658030		FUSE,215008(LITTEL-FUSE)		1	1
⊙	54	•M6056000		FUSE,19181-T6.3H(WICKMANN)		1	1
	55	2DA27050	302DA27050	POWER CORD(120)	1		
	56	2DA27060	302DA27060	POWER CORD(230)		1	
	57	29927231		POWER CODE AS(240)			1
	58	2A627930		CORE 11-25X14		1	1
	59	2C927250		GASKET SHIELD 8X10X45		1	1
	60	2A627940		CORE 10-20X10		1	1

- Parts with "•" are component parts or sub-assemblies of the assembly appearing immediately above them.
- Parts with "⊙" indicates the spare parts.

- Parts with "••" are component parts or sub-assembly with "•" appearing immediately above them.



FIG. 15 OPERATION UNIT

2DA/2DB

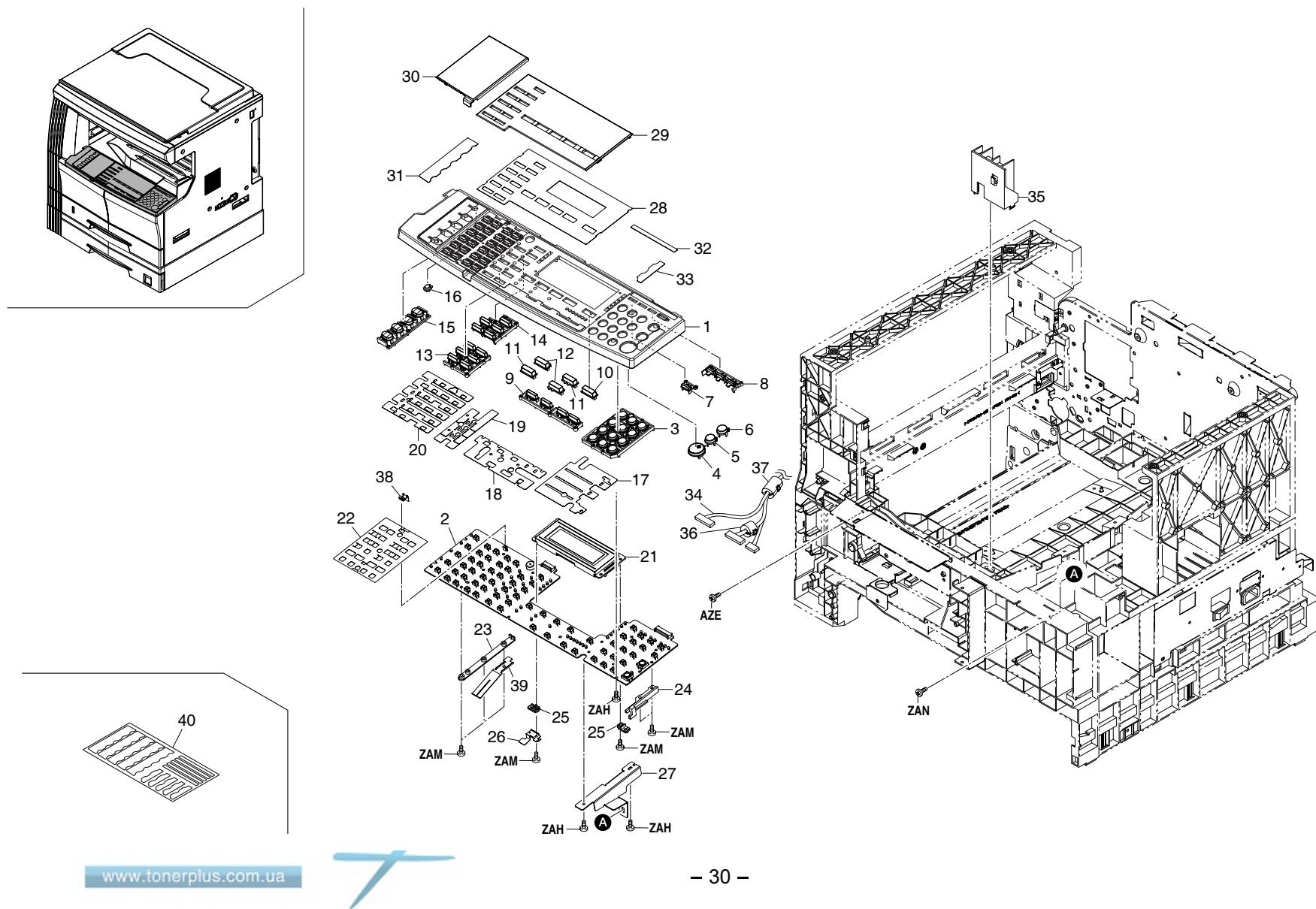


FIG. 15 OPERATION UNIT

SP	Ref.No.	Part.No.	Alternative.	Description	Quantity		
					120V	230V	240V
⊙	1	2DA25010	302DA01011	COVER OPERATION J	1	1	1
⊙	2	2DA01011		PCB OPERATION ASSY	1	1	1
⊙	3	2DA25350		KEY OPERATION 10	1	1	1
⊙	4	2DC25052		KEY PRINT	1	1	1
⊙	5	2DC25060		KEY STOP	1	1	1
⊙	6	2DC25070		KEY RESET	1	1	1
⊙	7	2DA25290		KEY MANAGEMENT	1	1	1
⊙	8	2DA25030		KEY SAVER	1	1	1
⊙	9	2DA25220		KEY EXPOSURE	1	1	1
⊙	10	2DA25050		KEY DECISION	1	1	1
⊙	11	2DA25270	302DA25510	KEY SELECT	2	2	2
⊙	12	2DA25280		KEY ZOOM	2	2	2
⊙	13	2DA25040		KEY FUNCTION	1	1	1
⊙	14	2DA25260		KEY FUNCTION B	1	1	1
⊙	15	2DA25060		KEY STATUS	1	1	1
⊙	16	2DA25250		KEY LANGUAGE	1	1	1
⊙	17	2DA25110		RIGHT DUST SHIELD	1	1	1
⊙	18	2DA25130		CENTER DUST SHIELD	1	1	1
⊙	19	2DA25120		LEFT DUST SHIELD	1	1	1
⊙	20	2DA25340		LEFT DUST SHIELD B	1	1	1
⊙	21	2DA28100	302DA25530	PCB LCD	1	1	1
⊙	22	2DA25510		PCB DUST SHIELD	1	1	1
⊙	23	2DA25330		SPACER OPE PCB B	1	1	1
⊙	24	2C925210		SPACER OPE PCB	1	1	1
⊙	25	2DA25300		STOPPER LCD	2	2	2
⊙	26	2DA25320		GROUND PLATE LCD	1	1	1
⊙	27	2C925201		MOUNT OPERATION R	1	1	1
⊙	28	2DA25380		CENTER OPE SHEET E	1	1	1
⊙	28	2DA25390		CENTER OPE SHEET G		1	
⊙	28	2DA25400		CENTER OPE SHEET F		1	
⊙	28	2DA25410	302DA25420	CENTER OPE SHEET I		1	
⊙	28	2DA25420		CENTER OPE SHEET S		1	
⊙	29	2DA25020		CENTER OPE COVER	1	1	1
⊙	30	2DA25230		LID FAX KEY	1	1	1
⊙	31	2DA25440		LEFT OPE SHEET E	1		
⊙	31	2DA25450		LEFT OPE SHEET		1	1
⊙	32	2DA25490		SHEET SAVER E	1		
⊙	33	2DA25470		SHEET KEYBOARD E	1		
⊙	34	2DA27520		WIRE PANEL	1	1	1
⊙	35	2C925180		RETAINER OPERATION	1	1	1

2DA/2DB							
SP	Ref.No.	Part.No.	Alternative.	Description	Quantity		
					120V	230V	240V
⊙	36	2A627940	302DA25520	CORE 10-20X10	1	1	1
	37	2C927230		CORE SFT-72SNB-026K	1		
	38	2DA25520		FG PLATE A	1	1	1
	39	2DA25530		FG PLATE B	1	1	1
	40	2DA25500		SHEET SET		1	1

- Parts with "•" are component parts or sub-assemblies of the assembly appearing immediately above them.
- Parts with "⊙" indicates the spare parts.

- Parts with "••" are component parts or sub-assembly with "•" appearing immediately above them.



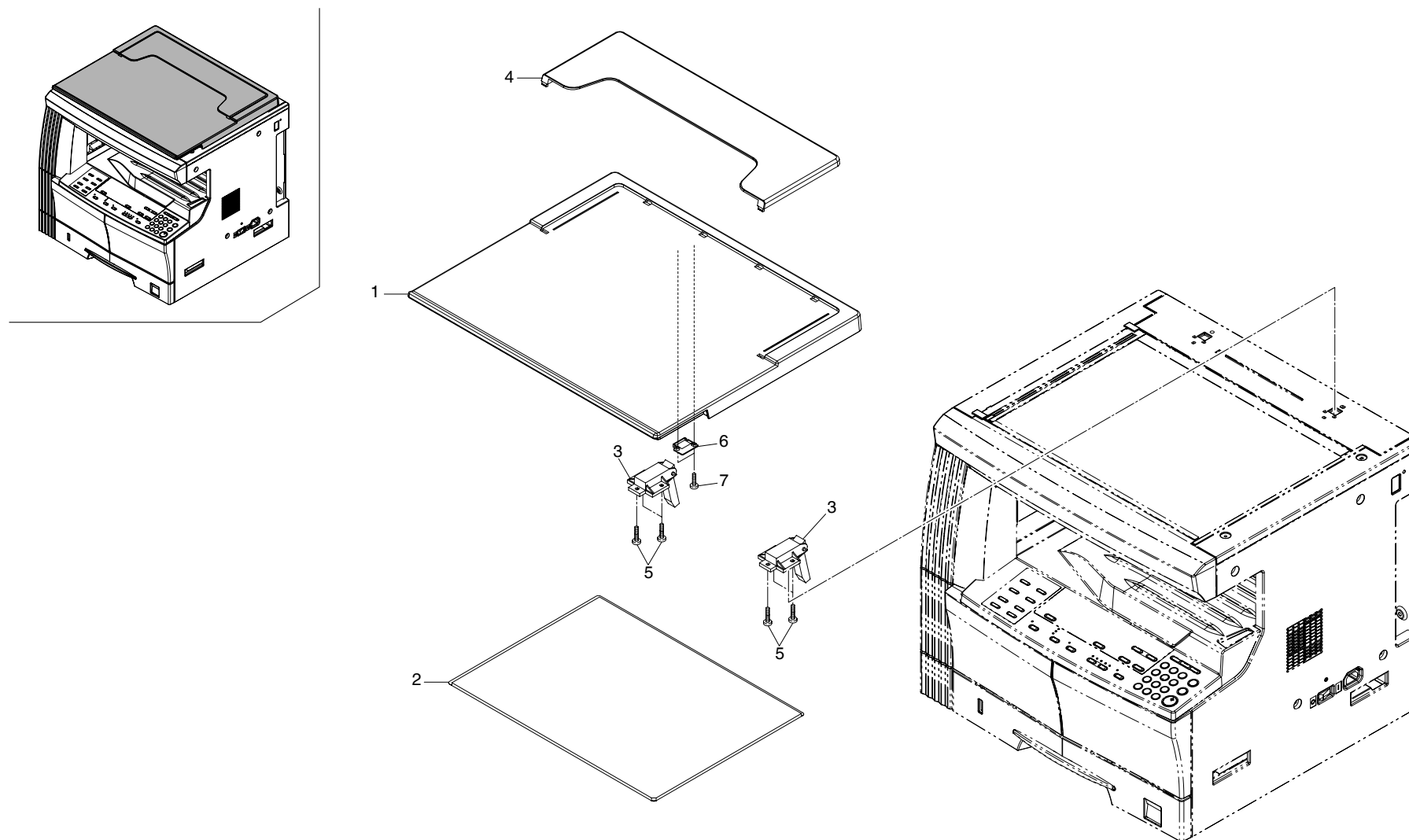


FIG. 16 OPTION I (ORIGINAL HOLDER)

2DA/2DB

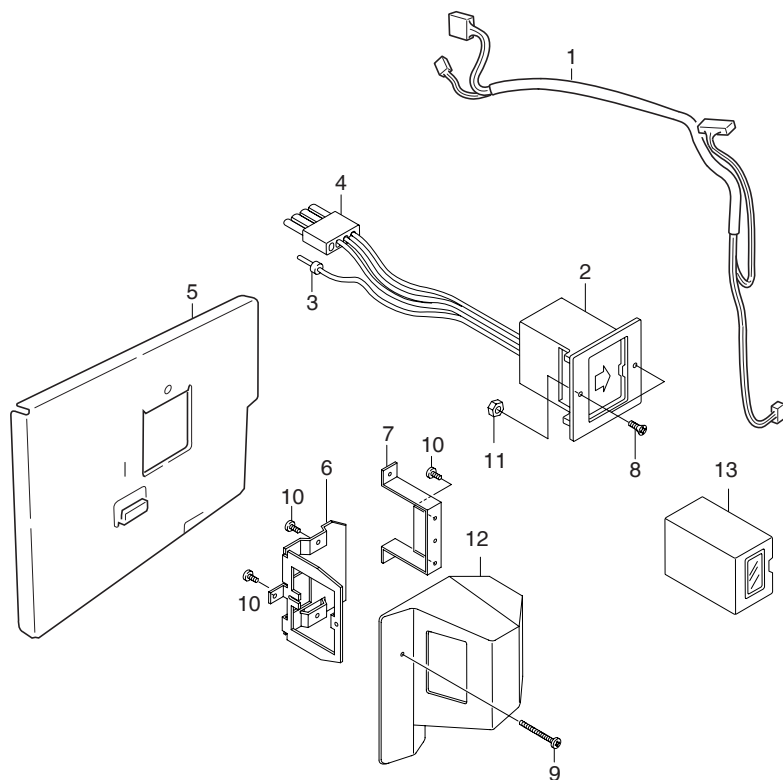
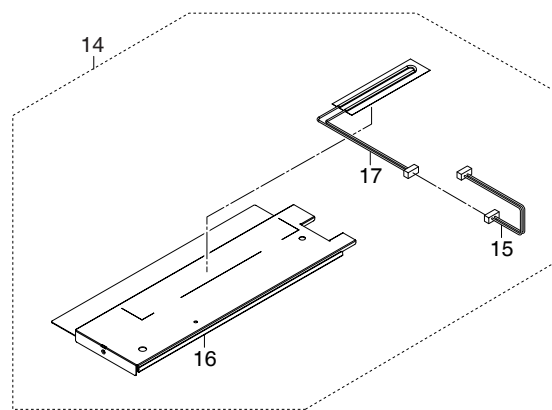
SP	Ref.No.	Part.No.	Alternative.	Description	Quantity		
					120V	230V	240V
		2CX82010		SET, PLATEN COVER TYPE D (OPTION)	1	1	1
	1	•2A612800		COVER, PLATEN	1	1	1
	2	•2A612810		MAT, ORIGINAL HOLDER	1	1	1
	3	•2A612820		HINGE, ORIGINAL HOLDER	2	2	2
	4	•60904280		ORIGINAL POCKET	1	1	1
	5	•B8014160		BINDING TAP-TITE P SCREW M4X16	6	6	6
	6	•2C912630		STOPPER RELEASE SWITCH	1	1	1
	7	•B1A64100		BIND T.T SCREW(+) / M4 X 10 CRFREE P-T	2	2	2

**TONER**  
www.tonerplus.com.ua

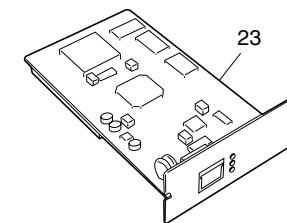
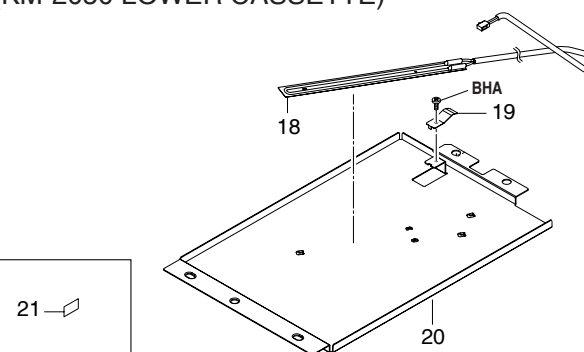
- Parts with "•" are component parts or sub-assemblies of the assembly appearing immediately above them.
- Parts with "⊙" indicates the spare parts.

- Parts with "••" are component parts or sub-assembly with "•" appearing immediately above them.

## KEY COUNTER

HEATER (KM-1650 CASSETTE)  
(KM-2050 UPPER CASSETTE)

## Scan System (F)

CASSETTE HEATER  
(KM-2050 LOWER CASSETTE)

## TOOL

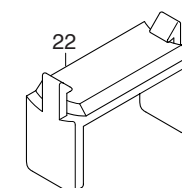


FIG. 17 OPTION II &amp; TOOL

2DA/2DB

SP	Ref.No.	Part.No.	Alternative.	Description	Quantity		
					120V	230V	240V
⊙	1	2C960110		WIRE KEY COUNTER	1	1	1
⊙	2	29236240		SOCKET ASS'Y,KEY COUNTER	1	1	1
	3	•J0220040		PLUG EL 4P,ELP-04V	1	1	1
	4	•25055010		SOCKET,KEY COUNTER	2	2	2
⊙	5	2C960100		MOUNT KEY COUNTER	1	1	1
⊙	6	66060030		RETAINER,KEY COUNTER	1	1	1
⊙	7	66060040		MOUNT,KEY COUNTER	1	1	1
⊙	8	B2303060		COUNTER-SUNK HEAD SCREW BFHM3X6 (B	2	2	2
⊙	9	B0004350		ROUND HEAD SCREW M4X35	1	1	1
⊙	10	B4304060		TRIPLE SCREW M4X6 (BLACK)	4	4	4
⊙	11	C2303000		NUT BNM3 (BLACK)	1	1	1
⊙	12	2A360010		COVER,KEY COUNTER	1	1	1
⊙	13	82142540		KEY COUNTER	1	1	1
⊙	14	2C993190		PARTS,DEH.ASSY120,SP	1		
⊙	14	2C993200		PARTS,DEH.ASSY240,SP		1	1
	15	•2C927780		WIRE DEHUMIDIFIER	1	1	1
	16	•2C907520		PLATE HEATER J	1	1	1
⊙	17	•2AV60100		HEATER,CASSETTE(120)	1		
⊙	17	•2AV60110		HEATER,CASSETTE(240)		1	1
⊙	18	2A727480		HEATER,DEHUMIDIFIER(120) (KM-2050)	1		
⊙	18	2A727490		HEATER,DEHUMIDIFIER(240) (KM-2050)		1	1
⊙	19	3BG02060		PLATE SPRING,CASSETTE HOLDER (KM-2050)	1	1	1
⊙	20	3HW02030		MOUNT HEATER (KM-2050)	1	1	1
	21	2C905120		LABEL CASSETTE TEMP (KM-2050)	1	1	1
⊙	22	35968110		STOPPER WIRE ASS'Y SP	2	2	2
⊙	23	3JR01010		SCANNER NIC ASS'Y	1	1	1

- Parts with "•" are component parts or sub-assemblies of the assembly appearing immediately above them.
- Parts with "⊙" indicates the spare parts.

- Parts with "••" are component parts or sub-assembly with "•" appearing immediately above them.

# INDEX

2DA/2DB

SP	Part.No.	Alternative.	Description	Fig.No.	SP	Part.No.	Alternative.	Description	Fig.No.
	18512340		GUIDE,SCANNER WIRE	10	⊙	2BL17030		COLLAR TRANS ROLLER	6
	19507050		LEVER,CASSETTE BASE RELEASE	5		2BL21260		SPRING ACTUATOR L	9
	25055010		SOCKET,KEY COUNTER	17	⊙	2BR20240		SEPARATOR ASSY	12
⊙	29236240		SOCKET ASS'Y,KEY COUNTER	17	⊙	2BT11070	5MVX111DN007	STOPPER 3	9
⊙	29807100		GEAR 16,BYPASS	4,7		2BY20050		NUT FUSER A	12
⊙	29812291		CUSHION,CONTACT GLASS	10		2BZ02300		SPRING WIRE	11
	29927231		POWER CODE AS(240)	14		2BZ22230		BUSH GEAR Z26H49515M0001A4	11
	2A118370		PULLEY,DRUM SEPARATION	2,11	⊙	2C901050		PCB MPF SIZE ASSY	8
⊙	2A360010		COVER,KEY COUNTER	17	⊙	2C901060		PCB EJECT SW ASSY	9
	2A612800		COVER,PLATEN	16	⊙	2C901100		PCB CASSETTE ASSY	7
	2A612810		MAT,ORIGINAL HOLDER	16	⊙	2C901170		DISPOSAL SENSOR ASSY	14
	2A612820		HINGE,ORIGINAL HOLDER	16	⊙	2C901180		CONT SENSOR ASSY	2
	2A627930		CORE 11-25X14	14	⊙	2C901190		PCB REGISTRATION ASSY	13
	2A627940		CORE 10-20X10	14,15		2C902070		BASE RUBBER	2
⊙	2A727480		HEATER,DEHUMIDIFIER(120) (KM-2050)	17		2C902080		SPRING DEV PUSH	2
⊙	2A727490		HEATER,DEHUMIDIFIER(240) (KM-2050)	17		2C902100		MOUNT REAR COVER	2
⊙	2A806030		BUSH FEED	4		2C902110		MOUNT FRONT COVER	2
⊙	2A806250		RING STOPPER	3,4,5,13		2C902120		PANEL FRONT	2
⊙	2AR07220		PULLEY,PAPER FEED	4,7		2C902130		MOUNT CONT PCB	2
⊙	2AR07230		PULLEY,SEPARATION	4,7		2C902140		HINGE FRONT COVER	1
⊙	2AR07240		PULLEY,LEADING FEED	4,7		2C902151		MOUNT CONT LEVER	2
	2AR18280		SPRING,CLAW SEPARATION	11		2C902160		RAIL DLP	2
	2AV12080		GUIDE FFC1	10	⊙	2C902170		LEVER DEV PUSH	2
⊙	2AV12160		MIRROR B	10		2C902180		FILM BASE	2
	2AV27440		CORE 15-26X13	14		2C902200		RAIL CLEANING	2
⊙	2AV60100		HEATER,CASSETTE(120)	17		2C902230		FILM BASE L	2
⊙	2AV60110		HEATER,CASSETTE(240)	17		2C902240		FILM BASE B	2
	2AV73580		LABEL,TONER DISPOSAL TANK HK	1		2C902260		GROUND PLATE FRAME	2
⊙	2BC06510		BUSHING 8	7,8,10		2C902270		SPACER BASE	2
⊙	2BC06910		STOPPER 6	6,7,8		2C902280		HOLDER PULLEY	2
⊙	2BC06980		STOPPER 5	6,7,8,9,10		2C902510		GUIDE A CONT.	2
	2BC06990		STOPPER 5,RING	4		2C902520		COLLAR LEVER CONT.	2
	2BC12190		SPRING,MIRROR HOLDER	10	⊙	2C902540		LEVER LOCK CONT.	2
	2BJ26120		LID MODULAR	14		2C902560		GUIDE B CONT.	2
	2BL04410		PIN COVER	3		2C902590		SPRING DEV PUSH F	2
⊙	2BL05070		LABEL SEP CLEANING	1	⊙	2C904031	302C904031	TRAY EXIT (1/2)	1
	2BL06211		SHAFT FEED PULLEY	3	⊙	2C904041		RIGHT COVER	1
	2BL14480		SEAL WIRE	14	⊙	2C904050		LEFT COVER	9
⊙	2BL16080		PULLEY FEED	3	⊙	2C904060		LEFT LOW COVER	1
	2BL16220		BRUSH CLEANER	1	⊙	2C904070		UPPER FRONT COVER	1

• Parts with "⊙" indicates the spare parts.

## 2DA/2DB

SP	Part.No.	Alternative.	Description	Fig.No.	SP	Part.No.	Alternative.	Description	Fig.No.
⊙	2C904080	302C904372	FRONT SIDE COVER UP	1	⊙	2C905090		LABEL HIGH TEMP	9
⊙	2C904090		FRONT TOP COVER	1	⊙	2C905100		LABEL RADIATION	1
⊙	2C904100		RIGHT TOP COVER	1		2C905110		LABEL DRUM CAUTION	2
⊙	2C904110		LEFT TOP COVER	1		2C905120		LABEL CASSETTE TEMP (KM-2050)	17
⊙	2C904120		REAR TOP COVER	1	⊙	2C905160		LABEL GLASS CAUTION	10
⊙	2C904130		FRONT SIDE COVER MID	1	⊙	2C905170		LABEL BYPASS TABLE	9
⊙	2C904140		FRONT SIDE COVER LOW	1		2C905200		LABEL CASSETTE LGR	5
⊙	2C904150		INNER REAR COVER	1	⊙	2C905220		LABEL LEFT COVER	1
⊙	2C904160		INNER LEFT COVER	1	⊙	2C905230		SHEET CASSETTE SIZE(C)	5
⊙	2C904180		LEFT FRONT COVER	1	⊙	2C905240		SHEET CASSETTE SIZE(I)	5
⊙	2C904190		LEFT REAR COVER	1	⊙	2C905270		LABEL BYPASS JAM	9
⊙	2C904200		LEFT MIDDLE COVER	1	⊙	2C906010		COVER BYPASS	8
	2C904210		STOPPER LEFT COVER F	9	⊙	2C906020		TABLE BYPASS	8
	2C904220		STOPPER LEFT COVER R	9	⊙	2C906030		FRONT CURSOR BYPASS	8
	2C904231		STRAP LEFT COVER A	9	⊙	2C906040		REAR CURSOR BYPASS	8
	2C904241		STRAP LEFT COVER B	9	⊙	2C906050		BYPASS SUB TABLE A	8
	2C904250		SHAFT HOOK	9	⊙	2C906060		BYPASS SUB TABLE B	8
	2C904260		HOOK LEFT COVER F	9	⊙	2C906080		GEAR 18 BYPASS	8
	2C904270		HOOK LEFT COVER R	9		2C906090		TERMINAL PAPER SIZE	8
	2C904280		JUNCTION PLATE HOOK	9		2C906101		LIFT PLATE BYPASS	8
	2C904290		PLATE FRONT COVER	1		2C906110		SPRING BYPASS LIFT	8
	2C904300		ARM INTERLOCK SW	14	⊙	2C906120		SHEET BYPASS LIFT	8
	2C904310		MOUNT INTERLOCK SW	14	⊙	2C906130		STOPPER BYPASS	8
	2C904340		SPRING LEFT INTERLOCK	14		2C906171		SHAFT BYPASS	8
	2C904350		SPRING LEFT HOOK	9	⊙	2C906190		CAM BYPASS	8
	2C904360		STRAP LEFT COVER C	8	⊙	2C906200		CLUTCH BYPASS FEED	8
⊙	2C904372		INNER FRONT COVER	1		2C906210		BYPASS PAPER GUIDE F	8
	2C904390		PLATE LEFT SW	9		2C906220		BYPASS PAPER GUIDE R	8
⊙	2C904410		COVER DSUB	1		2C906241		MOUNT LIFT PLATE	8
	2C904430		PLATE LEFT HOOK	9		2C906250		GROUND PLATE BYPASS	8
	2C904440		SPRING LEFT COVER	9		2C906280		GROUND PLATE LIFT	8
⊙	2C904460		COVER FRONT STRAP	9		2C906290		SHEET BYPASS GUIDE	8
⊙	2C904470		FRONT LEFT COVER(K)	1	⊙	2C906300		SEAL BYPASS GUIDE	8
⊙	2C904480		FILM FRONT COVER	1		2C906310		SEAL BYPASS LIFT	8
	2C904490		PLATE FRONT STRAP	8		2C907010		CASSETTE	5
⊙	2C904500		PIN LEFT COVER	9		2C907020		BOTTOM CASSETTE	5
	2C904510		SPONGE COVER	1	⊙	2C907030		REAR CURSOR C	5
	2C904550		CUT WASHER 5	9	⊙	2C907040		FRONT CURSOR C	5
	2C905071		LABEL CONT SET	2		2C907050		PLATE SIDE SW	5
⊙	2C905080		LABEL CONVEYING JAM	1		2C907060		PLATE SIZE DETECTION	3,7

• Parts with "⊙" indicates the spare parts.

SP	Part.No.	Alternative.	Description	Fig.No.
•	2C907070		LEVER INDICATOR	5
	2C907080		LEFT RAIL CASSETTE	7
	2C907090		SPRING SIDE SW	5
	2C907100		STOPPER CASSETTE	3,7
	2C907110		MARKER INDICATOR	5
	2C907120		ACTUATOR EMPTY	4,7
	2C907130		GEAR Z15 REGIST	7
	2C907140		PAD CASSETTE	5
	2C907150		SPRING BOTTOM	5
	2C907160		RIGHT GUIDE REGIST	7
	2C907170		ACTUATOR REGIST	4,7
	2C907180		RIGHT ROLL REGIST	7
	2C907190		RIGHT CURSOR A	5
	2C907200		STOPPER ARM	5
	2C907210		SHAFT PAPER FEED	7
	2C907230		SHAFT PICK UP B	4,7
	2C907240		PLATE PICK UP B	4,7
	2C907250		HOLDER RETARD	4,7
	2C907260		SLIDER RAIL	4,7
	2C907270		LEVER PICK UP	3,7
	2C907280		TORQUE LIMITER 340	4,7
	2C907290		SPRING REGIST B	7
	2C907300		SHAFT RETARD	4,7
	2C907310		SPRING REGIST	4
	2C907320		SPRING RETARD	4,7
	2C907340		SPRING PICK UP	4,7
	2C907350		SPRING LEVER	3,7
	2C907360		SPRING CURSOR R	5
	2C907370		MARKER CASSETTE	5
	2C907380		TURN PLATE CASSETTE	5
	2C907390		LEVER CURSOR C	5
	2C907400		HOLDER PULLEY A	4,7
	2C907410		PULLEY GUIDE A	4,7
	2C907420		HOLDER FEED SHAFT	7
	2C907430		BUSH PAPER FEED C	4,7
	2C907440		RIGHT MOUNT REGIST	7
	2C907470		GROUND PLATE REG R	7
	2C907480		HOLDER SENSOR	4,7
	2C907490		STOPPER INDICATOR	5
	2C907500		GROUND PLATE BOTTOM	5

SP	Part.No.	Alternative.	Description	Fig.No.
•	2C907510		GROUND PLATE CASS	7
	2C907520		PLATE HEATER J	17
	2C907530		FILM REGIST R	7
	2C907540		GROUND PLATE REG F	7
	2C907550		LID CASSETTE A	5
	2C907560		LID CASSETTE B	5
	2C907570		LID CASSETTE C	5
	2C907580		FILM BASE RIB	7
	2C907590		HOLDER RIGHT CURSOR	5
	2C907600		PIN CURSOR C	5
	2C907610		SHEET TONER TANK	7
	2C907620		SPRING LEVER F	5
	2C907640		STOPPER PLATE SIZE	7
	2C910040		GRID	11
	2C912090		LAMP SCANNER YG	10
	2C912100		MIRROR FRAME A	10
	2C912110		REFLECTOR SCANNER	10
	2C912120		MIRROR FRAME B	10
	2C912130		ADJUSTING PLATE B	10
	2C912141		MOUNT BASE DF HINGE LEFT	10
	2C912150		RETAINER WIRE	10
	2C912160		GUIDE FFC B	10
	2C912180		FILM FRAME A	10
	2C912190		STANDARD PLATE SHADING	10
	2C912200		LEFT SIZE INDICATOR	10
	2C912210		REAR SIZE INDICATOR(M)	10
	2C912220		MOUNT PI	10
	2C912230		HOLDER FFC A	10
	2C912250		CONTACT GLASS	10
	2C912260		BELT SCANNER	10
	2C912270		LOWER SEAL SCANNER	10
	2C912280		CONTACT GLASS ADF	10
	2C912290		SPRING SCANNER TENSION	10
	2C912300		MOTOR PLATE SCANNER	10
	2C912310		GEAR Z18/39	10
	2C912320		GEAR Z36	10
	2C912330		SHAFT MOTOR DRIVE	10
	2C912340		DRUM PULLEY	10
	2C912350		FRONT WIRE SCANNER	10
	2C912360		REAR WIRE SCANNER	10

• Parts with "•" indicates the spare parts.

## 2DA/2DB

SP	Part.No.	Alternative.	Description	Fig.No.
⊙	2C912380		MOTOR SCANNER	10
⊙	2C912390		MIRROR A	10
	2C912400		PIN SCANNER RETAINING	10
	2C912410		GROUND PLATE SCANNER	10
	2C912420		HOLDER GLASS DF	10
⊙	2C912430		LID KMAS	1
	2C912440		LABEL SIZE (METRIC)	10
	2C912450		LABEL SIZE (INCH)	10
	2C912460		REAR SIZE INDICATOR(I)	10
	2C912470		PLATE DSUB	10
	2C912480		HOLDER CCD WIRE	10
	2C912490		MOUNT DSUB	10
	2C912580		COVER ISU	10
	2C912600		FRONT SIZE INDICATOR	10
	2C912610		MOUNT RELEASE SWITCH	10
	2C912620		GUIDE RELEASE SWITCH	10
	2C912630		STOPPER RELEASE SWITCH	16
	2C912640		SHAFT RELEASE SWITCH	10
	2C912650		SPRING RELEASE SWITCH	10
	2C912660		GUIDE CCD WIRE	10
	2C912670		SHIELD SCANNER FRAME	10
⊙	2C912680		PULLEY SCANNER	10
	2C912690		GROUND PLATE SCANNER B	10
⊙	2C912700		SPONGE ORIGINAL SIZE	10
	2C912710		SHIELD SCANNER FRAME B	10
	2C912720		SHIELD BASE	10
	2C912730		SHIELD WIRE PANEL	10
	2C914080		REAR COVER DLP	11
	2C914280		GEAR Z20H B	11
⊙	2C916020		ROLLER REGIST LEFT	6
	2C916031		BASE CONVEYING	6
⊙	2C916040		FILM REGIST GUIDE	6
⊙	2C916060		LEVER CONVEYING FRONT	6
⊙	2C916070		LEVER CONVEYING REAR	6
⊙	2C916080		STOPPER BUSH REG	6
	2C916090		GUIDE CONVEYING	6
	2C916100		SPRING REGIST F	6
	2C916120		SPRING CONVEYING BASE	6
	2C916130		GROUND PLATE REG	6
	2C916140		GROUND PLATE CONVEYING	6

SP	Part.No.	Alternative.	Description	Fig.No.
	2C916150		PIN CONVEYING HOOK	14
	2C916160		SHAFT CONVEYING	6
	2C916170		GUIDE FEED A	6
⊙	2C916180		GEAR Z15 REGIST	6
	2C916190		SPRING REGIST R	6
	2C916200		LEVER TRANS GUIDE	6
	2C916220		REINFORCEMENT CONVEYING	6
	2C916230		SHAFT CONVEYING LEVER	6
	2C916240		FILM REGIST GUIDE R	6
⊙	2C916250		COLLAR REGIST	6
	2C916260		BUSH REGIST	6
	2C916270		SPACER REG F	6
	2C916280		SPACER REG T0.5	6
	2C916290		FILM CONV BASE	6
⊙	2C917010		ROLLER TRANSFER	6
⊙	2C917020		GEAR TRANSFER	6
	2C917030		GUIDE LEFT TRANS FRONT	6
	2C917040		TERMINAL PLATE TRANS	6
	2C917050		REINFORCEMENT TRANS GUIDE	6
	2C917060		SPRING TRANS F	6
⊙	2C917070		HOUSING STA ELIMINATION	6
⊙	2C917080		PLATE STA ELIMINATION	6
	2C917090		TERMINAL STA ELIMINATION	6
⊙	2C917100		BUSH TRANSFER	6
⊙	2C917110		COLLAR TRANS	6
	2C917120		SPRING TRANS R	6
	2C917140		GUIDE TRANS RIGHT	7
	2C917150		SPRING GUIDE TRANS	6
	2C917160		BUSH TRANS GUIDE F	6
	2C917170		BUSH TRANS GUIDE R	6
	2C917180		BUSH TRANS ROLL F	6
	2C917200		SPACER TRANS ROLL	6
	2C917210		SPACER GUIDE LEFT TRANS	6
	2C917220		FILM RIGHT TRANS A	7
	2C918010		BLADE CLEANING	11
	2C918040		LOWER SEAL CLEANING	11
	2C918050		FRONT COVER CLEANING	11
	2C918150		TANK DISPOSAL	1
	2C918170		CAP TANK DISPOSAL	1
	2C918340		HOLDER CLAW	11

• Parts with "⊙" indicates the spare parts.



SP	Part.No.	Alternative.	Description	Fig.No.
	2C918350		DETECTION PLATE	14
	2C918360		SPRING DETECTION	14
	2C918370		CLAW SEPARATION	11
	2C918400		HOLDER SENSOR B	14
	2C920010		RIGHT FRAME FUSER	12
	2C920020		LEFT FRAME FUSER	12
	2C920030		REAR GUIDE FUSER	12
	2C920040		FRONT GUIDE FUSER	12
⊙	2C920050		ROLLER HEAT	12
⊙	2C920060		ROLLER PRESS	12
	2C920110		FRONT PRESSING PLATE	12
	2C920120		REAR PRESSING PLATE	12
	2C920130		SPRING PRESSURE	12
	2C920140		PLATE HEATER FUSER	12
⊙	2C920150		FRONT BUSH HEAT ROLLER	12
⊙	2C920160		REAR BUSH HEAT ROLLER	12
⊙	2C920170		GEAR Z38 HEAT ROLLER	12
⊙	2C920180		GEAR FUSER Z28	12
⊙	2C920190		SPRING SEPARATOR	12
	2C920200		GROUND PLATE PRESS	12
⊙	2C920230		HEATER M120 FUSER	12
⊙	2C920240		HEATER S120 FUSER	12
⊙	2C920250		HEATER M230 FUSER	12
⊙	2C920260		HEATER S230 FUSER	12
⊙	2C920310		THERMISTOR FUSER	12
	2C920320		SEAL DISCHAGER	12
⊙	2C920330		BEARING PRESSURE	12
⊙	2C920340		THERMOCUT 180 FUSER	12
⊙	2C921010		ROLLER EXIT INNER	9
⊙	2C921020		ROLLER FEED SHIFT	9
⊙	2C921040		PULLEY FEED SHIFT	9
	2C921050		GUIDE SHIFT	9
	2C921061		GUIDE SEPARATE	9
	2C921071		HOUSING EXIT UPPER	9
	2C921080		HOUSING EXIT LOWER	9
	2C921091		GUIDE EXIT LOWER	9
⊙	2C921100		ACTUATOR EXIT INNER	9
⊙	2C921110		ACTUATOR EXIT LEFT	9
⊙	2C921120		GEAR 23 EXIT	9
	2C921150		ARM SHIFT	9

SP	Part.No.	Alternative.	Description	Fig.No.
⊙	2C921160		ARM SEPARATE	9
	2C921180		ARM LINK	9
	2C921190		SPRING PULLEY INNER	9
	2C921200		SPRING PULLEY FEED SHIFT	9
	2C921221		SPRING GUIDE DU	9
	2C921231		GUIDE DU	9
	2C921240		ARM SHIFT B	9
	2C921260		PLATE EARTH EXIT 2	9
	2C921270		ARM SEPARATE B	9
	2C921280		SPRING SEPARATE	9
	2C921290		SPRING LINK	9
	2C921301	302C921301	BRACKET EXIT	9
	2C921310		PLATE EARTH EXIT B	9
	2C921330		SPRING ACTUATOR INNER	9
⊙	2C921340		BELT EXIT	9
⊙	2C921350		PULLEY EXIT	9
⊙	2C921360		PULLEY EJECT	9
	2C921370		STOPPER SE	9
	2C921380		SPRING PULLEY EJECT	9
	2C921390		PLATE EXIT HOLDER	9
	2C921400		SHOULDER SCREW EXIT	9
	2C922010		MOUNT DRIVE UNIT	13
⊙	2C922020		GEAR 122	13
⊙	2C922030		GEAR 88/34	13
⊙	2C922040		GEAR 50	13
⊙	2C922050		GEAR 40	13
⊙	2C922060		POSITIONING BUSH DRUM	13
⊙	2C922070		GEAR 30/23	13
⊙	2C922080		GEAR 60	13
⊙	2C922100		GEAR 25 DPX	13
⊙	2C922110		GEAR 32 DPX	13
⊙	2C922130		MOUNT CONT DRIVE	13
⊙	2C922140		GEAR 25 DEV	13
⊙	2C922150		GEAR 26 DEV	13
⊙	2C922160		SHAFT DPX DRIVE	13
⊙	2C922170		COUPLING CONT P	13
⊙	2C922180		COUPLING CONT S	13
⊙	2C922190		COUPLING DRUM	13
⊙	2C922200		GEAR 43/20	13
⊙	2C922210		GEAR 20	13

• Parts with "⊙" indicates the spare parts.

## 2DA/2DB

SP	Part.No.	Alternative.	Description	Fig.No.	SP	Part.No.	Alternative.	Description	Fig.No.
⊙	2C922220	302C926111	GEAR 25	13	⊙	2C927090	302C993051 302C993061	SENSOR ORIGINAL	10
⊙	2C922230		GEAR 29 FIX JOINT	13	⊙	2C927140		SWITCH CONTAINER	2,4
	2C922240		SPRING FIX JOINT	13	⊙	2C927170		SWITCH INTERLOCK L	14
	2C922250		SPRING DRUM COUPLING	13	⊙	2C927180		SWITCH INTERLOCK F	14
	2C922260		SPRING CONT P	13	⊙	2C927190		CLUTCH FEED	13
	2C922270		SPRING CONT S	13	⊙	2C927210		SENSOR 248NL1	4,7,8,10
	2C922280		MOUNT HV PCB	13	⊙	2C927220		MOTOR REGISTRATION	13
	2C922290		HOLDER GEAR	13		2C927230		CORE SFT-72SNB-026K	14,15
⊙	2C922300		GEAR 40 FIXJOINT	13		2C927250		GASKET SHIELD 8X10X45	14
⊙	2C922330		GEAR 30 PF	13		2C927510		WIRE ENGINE	14
⊙	2C922340		GEAR 31	13		2C927520		WIRE CASSETTE PCB	7
⊙	2C922350		GEAR 51 REG	13		2C927530		WIRE EJECT	9
⊙	2C922360		GEAR 25 PF	13		2C927540		WIRE DP	10
	2C922370		MOUNT REG MOTOR	13		2C927550		WIRE SCANNER PI	10
	2C923010		UPPER DUCT	13		2C927560		WIRE ORIGINAL SIZE	10
	2C923020		LOWER DUCT	13	⊙	2C927580		FFC INVERTER	10
	2C923030		FILM COOLING	13		2C927600		WIRE FUSER	14
	2C925180		RETAINER OPERATION	15		2C927610		WIRE DESK POWER	14
	2C925201		MOUNT OPERATION R	15		2C927660		WIRE DESK	14
	2C925210		SPACER OPE PCB	15		2C927670		WIRE CASSETTE SW	7
	2C926010		BASE TERMINAL TRANSFER	2		2C927680		WIRE FRONT SW	14
	2C926020		BASE TERMINAL MAIN	2		2C927690		WIRE FUSER UNIT	12
	2C926030		TERMINAL DLP	2		2C927710		WIRE PD	14
	2C926040		TERMINAL TRANSFER	2	⊙	2C927740		FFC HVU	14
	2C926050		TERMINAL SEPARATION	2		2C927750		WIRE CASSETTE PE	7
	2C926060		TERMINAL MAIN	2		2C927760		WIRE MAIN MOTOR	13
	2C926070		HOLDER INTERLOCK SW	14		2C927780		WIRE DEHUMIDIFIER	17
	2C926080		GROUND PLATE CONVEYING	2		2C927790		WIRE UPPER LEFT	2
	2C926100		TERMINAL FUSER	2	⊙	2C928040		PCB LAMP INVERTER	10
	2C926111		GROUND PLATE EXIT	2	⊙	2C928051		PCB HIGH VOLTAGE	14
	2C926120		GROUND PLATE FUSER	2	⊙	2C960100		MOUNT KEY COUNTER	17
	2C926130		SHIELD RIGHT COVER	1	⊙	2C960110		WIRE KEY COUNTER	17
	2C926140		SHIELD UPPER LEFT	2		2C982010		SET MK-410 (OPTION)	11
	2C926150		SHIELD UPPER LEFT B	2	⊙	2C993010		PARTS,CT-410,SP	5
	2C926160		SHIELD CCD WIRE	14	⊙	2C993020		PARTS,MC-410,SP	11
	2C926510		MOUNT POWER SOURCE	14	⊙	2C993030		PARTS,DV-410,SP	11
⊙	2C927010		MOTOR MAIN	13	⊙	2C993051		PARTS,FK-410(A),SP	12
⊙	2C927020		MOTOR EJECT	13	⊙	2C993061		PARTS,FK-410(E),SP	12
⊙	2C927050		SOLENOID BYPASS	8	⊙	2C993090		PARTS,LSU ASS'Y,SP	14
⊙	2C927070		FAN COOLING 80-25	13	⊙	2C993130		PARTS,BYPASS PULLEY,SP	8

• Parts with "⊙" indicates the spare parts.

SP	Part.No.	Alternative.	Description	Fig.No.
⊙	2C993140		PARTS,BYPASS PAD,SP	8
⊙	2C993170		PARTS,CONTACT GLASS,M(SP)	10
⊙	2C993180		PARTS,CONTACT GLASS,I(SP)	10
⊙	2C993190		PARTS,DEH.ASSY120,SP	17
⊙	2C993200		PARTS,DEH.ASSY240,SP	17
⊙	2C993210		PARTS,REGIST CLEANER,ASSY	7
	2CK10060		CORONA WIRE MCH	11
	2CX82010		SET,PLATEN COVER TYPE D (OPTION)	16
⊙	2DA01011	302DA01011	PCB OPERATION ASSY	15
⊙	2DA01070	302DA01070	PCB PRINTER ASSY	14
⊙	2DA04010		FRONT RIGHT COVER (KM-2050)	1
⊙	2DA04020		LID MAIN SW	1
⊙	2DA04030		COVER SHIELD	1
⊙	2DA04040		REAR COVER	1
⊙	2DA04090	302DA04090	LID FINISHER	1
⊙	2DA04100	302DA04100	LID REAR COVER	1
	2DA06010		ACTUATOR BYPASS	8
⊙	2DA20010	302DA20010	SPACER FUSER UNIT	12
⊙	2DA20020	302DA20020	STOPPER FUSER SPACER	12
⊙	2DA25010		COVER OPERATION J	15
⊙	2DA25020		CENTER OPE COVER	15
⊙	2DA25030		KEY SAVER	15
⊙	2DA25040		KEY FUNCTION	15
⊙	2DA25050		KEY DECISION	15
⊙	2DA25060		KEY STATUS	15
	2DA25110		RIGHT DUST SHIELD	15
	2DA25120		LEFT DUST SHIELD	15
	2DA25130		CENTER DUST SHIELD	15
⊙	2DA25220		KEY EXPOSURE	15
⊙	2DA25230		LID FAX KEY	15
⊙	2DA25250		KEY LANGUAGE	15
⊙	2DA25260		KEY FUNCTION B	15
⊙	2DA25270		KEY SELECT	15
⊙	2DA25280		KEY ZOOM	15
⊙	2DA25290		KEY MANAGEMENT	15
	2DA25300		STOPPER LCD	15
	2DA25320		GROUND PLATE LCD	15
	2DA25330		SPACER OPE PCB B	15
	2DA25340		LEFT DUST SHIELD B	15
⊙	2DA25350		KEY OPERATION 10	15

SP	Part.No.	Alternative.	Description	Fig.No.
	2DA25360		SHEET OPERATION PCB	2
⊙	2DA25380		CENTER OPE SHEET E	15
⊙	2DA25390	302DA25390	CENTER OPE SHEET G	15
⊙	2DA25400	302DA25400	CENTER OPE SHEET F	15
⊙	2DA25410	302DA25410	CENTER OPE SHEET I	15
⊙	2DA25420	302DA25420	CENTER OPE SHEET S	15
⊙	2DA25440		LEFT OPE SHEET E	15
⊙	2DA25450		LEFT OPE SHEET	15
⊙	2DA25470		SHEET KEYBOARD E	15
⊙	2DA25490		SHEET SAVER E	15
⊙	2DA25500	302DA25500	SHEET SET	15
	2DA25510	302DA25510	PCB DUST SHIELD	15
	2DA25520	302DA25520	FG PLATE A	15
	2DA25530	302DA25530	FG PLATE B	15
	2DA26500		SHIELD MAIN	14
	2DA26510		RAIL SHIELD	14
	2DA26520		GUIDE CF	14
	2DA26540		LID NETWORK	14
	2DA26550		LABEL INTERFACE	14
⊙	2DA27020		FAN COOLING 50-10	14
	2DA27050	302DA27050	POWER CORD(120)	14
⊙	2DA27060	302DA27060	POWER CORD(230)	14
	2DA27510		FFC CCD	10
	2DA27520		WIRE PANEL	15
	2DA27531	302DA27531	WIRE MPF	8
⊙	2DA27560		FFC MAIN	14
	2DA27580	302DA27580	WIRE MPF SW	8
⊙	2DA28070		PCB LVU 100	14
⊙	2DA28080		PCB LVU 200	14
⊙	2DA28100		PCB LCD	15
⊙	2DA93010	302DA93010	PART,ISU ASS'Y,SP	10
⊙	2DA93020	302DA93020	PARTS,PCB ENGINE ASS'Y,SP (KM-2050)	14
⊙	2DA93030	302DA93030	PARTS,PCB MAIN ASS'Y,SP	14
⊙	2DB04010		FRONT RIGHT COVER (KM-1650)	1
⊙	2DB93010	302DB93010	PARTS,PCB ENGINE ASS'Y,SP (KM-1650)	14
	2DC12230		SLIDER SCANNER	10
⊙	2DC25052		KEY PRINT	15
⊙	2DC25060		KEY STOP	15
⊙	2DC25070		KEY RESET	15
⊙	2DC27180		SWITCH PI	10

• Parts with "⊙" indicates the spare parts.

## 2DA/2DB

SP	Part.No.	Alternative.	Description	Fig.No.	SP	Part.No.	Alternative.	Description	Fig.No.
	2DD26070		PLATE OPTION	14		3HW27040		CONN CORD ASSY UPPER IF	3
	33910230		PIN CHARGER	11		3HW27050		CONN CORD ASSY LOWER IF	3
⊙	34821210		STATIC ELIMINATOR B,EJECT	9		3HW27060		CONN CORD ASSY PCB-INTERF	3
⊙	34907141		GEAR 18,CASSETTE	5		3HW27070		CONN CORD ASSY SIZE SW	4
⊙	35968110		STOPPER WIRE ASS'Y SP	17		3HW27080		CONN CORD ASSY PE SENSOR	4
⊙	3A504020		COUPLER,RELEASE	3		3HW27090		CONN CORD ASSY FEED SW	4
⊙	3BG02060		PLATE SPRING,CASSETTE HOLDER (KM-2050)	17	⊙	3JR01010		SCANNER NIC ASS'Y	17
	3BH26030		PIN,OPTION	14		60804120		MAGNET CATCH	1
⊙	3CY07080		BUSHING 6	4,7,9,13		60904280		ORIGINAL POCKET	16
⊙	3HL07250		GEAR 20 PF FEED	4	⊙	66060030		RETAINER,KEY COUNTER	17
	3HW00010		REINFORCEMENT FEED ASSY	3	⊙	66060040		MOUNT,KEY COUNTER	17
⊙	3HW01010		MAIN PCB ASS'Y	3	⊙	76508130		SPRING BELT GUIDE ROLLER	5
⊙	3HW01020		HEATER BRANCH PCB ASS'Y	3	⊙	82142540		KEY COUNTER	17
	3HW02020		LEFT RAIL CASSETTE	4	⊙	B0004350		ROUND HEAD SCREW M4X35	17
⊙	3HW02030		MOUNT HEATER (KM-2050)	17		B1A64100		BIND T.T SCREW(+) / M4 X 10 CRFREE P-T	16
⊙	3HW02040		UPPER REAR COVER	3	⊙	B2303060		COUNTER-SUNK HEAD SCREW BFHM3X6 (B	17
	3HW02050		JUNCTION PLATE MFP	3	⊙	B4304060		TRIPLE SCREW M4X6 (BLACK)	17
	3HW02080		MOUNT SW	4		B8014160		BINDING TAP-TITE P SCREW M4X16	16
	3HW02090		GROUND PLATE CASSETTE	3	⊙	C2303000		NUT BNM3 (BLACK)	17
	3HW02110		GROUND PLATE PF	3		J0220040		PLUG EL 4P,ELP-04V	17
	3HW02120		GROUND PLATE PF2	3		M0208010		SPACER,SFS-2.6S-B1WM(JST)	10
	3HW02130		GROUND PLATE PF3	3	⊙	M1658030		FUSE,215008(LITTEL-FUSE)	14
	3HW02140		BASE LEG	3		M2104260		EDGING,EDS-0607U(KITAGAWA)	4
	3HW02150		HOOK COVER	3		M2105740		MINIATURE CLAMP,UAMS-05S-2	14
⊙	3HW04010		COVER PAPER FEED	3		M2107120		BINDING BAND SG-130	4
⊙	3HW04020		LEFT FRONT COVER	3		M2108130		SPACER,KGPS-4S	14
⊙	3HW04030		LEFT REAR COVER	3		M2108800		SPACER,KGPS-3.5S(KITAGAWA)	14
⊙	3HW04040		REAR COVER	3		M2109000		WIRE SADDLE,WS-1NS	10,14
⊙	3HW06020		ROLLER FEED	4		M2109020		WIRE SADDLE,WS-2WS	14
	3HW06030		SHAFT PAPER FEED	4		M2109180		WIRE SADDLE,LWS-1S	4
	3HW06040		GUIDE CONVEYING	3		M2109330		WIRE SADLE,YMC-10-0	14
	3HW06050		HOLDER FEED SHAFT	4	⊙	M5561000		FUSE,CES6-N1(SOC)	14
	3HW06060		SPRING FEED	3	⊙	M6056000		FUSE,19181-T6.3H(WICKMANN)	14
	3HW06070		GUIDE SHEET PAPER FEED	4		M7005030		CLAMP,EMT-5N(TAKEUCHI)	14
⊙	3HW22010		GEAR 26/90	4		M70A5020		CLAMP,FCC-125EM513(TAKEUCHI)	14
⊙	3HW22020		GEAR 25	4	⊙	SP000360		PUSH SWITCH 03 SN	3,7
	3HW22030		MOUNT MOTOR	4		YB000510	7YBFP007C001H01	FERRITE CORE	14
	3HW22040		MOUNT DRIVE	4	⊙	ZG000470	7ZGSTG15C050H01	SHIELD GASKET	1,14
	3HW26010		SUPPORT PLATE PCB	3		ZG000480	7ZGSTG15C180H01	SHIELD GASKET	14
⊙	3HW27010		MOTOR PAPER FEED	4	⊙	ZG000490	7ZGSTG55C025H01	SHIELD GASKET	1
⊙	3HW27020		CLUTCH PAPER FEED	4		ZG000500	7ZGSTG710050H01	SHIELD GASKET	14

• Parts with "⊙" indicates the spare parts.

## CLASSIFICATION OF THE SCREWS IN ILLUSTRATION

<u>REF.</u>	<u>ITEM#</u>	<u>DESCRIPTION</u>
AZE	BAA64100	+TP TAP-TITE P SCREW M4X10
BBB	B1303050	BINDING SCREW BVM3X5 (BLACK)
BBE	B1304060	BINDING SCREW BVM4X6 (BLACK)
BBG	B1304100	BINDING SCREW BVM4X10 (BLACK)
BBR	B1303080	BINDING SCREW BVM3X8 (BLACK)
BHA	B3023060	BIND T.T SCREW(+) / M3 X 6 S-ZMC S-T
BHI	B3313080	BINDING TAP-TITE SCREW M3X08
BHU	B8013120	BINDING TAP-TITE P SCREW M3X12
BUA	B3314100	BINDING TAP-TITE P BRONZE SCREW M4X10
BUC	B3314120	M4X12 +BINDING TAP-TIGHT P SCREW
FDD	B3324060	BINDING TAP TIGHT SCREW M4X6(BLACK)
GEA	B9604080	GROUNDING SCREW M4X8 (BRASS,N <sub>i</sub> )
HCA	B4104060	TRIPLE SCREW M4X6(CHROMIUM)
HCJ	B4104100	TRIPLE SCREW M4X10(CHROMIUM)
HDB	B4343080	TRIPLE TAP-TITE P SCREW M3X08(BLACK)
HDK	B4144100	+TP TAP-TITE P SCREW M4X10(CHROMIUM)
KAL	E0020100	SPRING PIN / M2 X 10 S-BLK
TGB	C4204000	OT LOCK WASHER / M4X8.5X0.4T S-ZMC
XBB	C2893140	SHIM 6.2X14X0.25T
ZAH	B1A63080	BIND T.T SCREW(+) / M3 X 8 CRFREE P-T
ZAI	B1A53060	BIND T.T SCREW(+) / M3 X 6 CRFREE S-T
ZAM	B1A63120	BIND T.T SCREW(+) / M3 X 12 CRFREE P-T
ZAN	B1A64100	BIND T.T SCREW(+) / M4 X 10 CRFREE P-T

## KYOCERA MITA EUROPE B.V.

Hoeksteen 40, 2132 MS Hoofddorp,  
The Netherlands  
Phone: +31.(0)20.654.000  
Home page: <http://www.kyoceramita-europe.com>  
Email: [info@kyoceramita-europe.com](mailto:info@kyoceramita-europe.com)

## KYOCERA MITA NEDERLAND B.V.

Hoeksteen 40 2132 MS Hoofddorp  
The Netherlands  
Phone: +31.(0)20.587.7200

## KYOCERA MITA (UK) LTD.

8 Beacontree Plaza  
Gillette Way,  
Reading Berks RG2 0BS, UK  
Phone: +44.(0)118.931.1500

## KYOCERA MITA ITALIA S.P.A.

Via Verdi 89 / 91 20063 Cernusco sul Naviglio,  
Italy  
Phone: +39.02.92179.1

## S.A. KYOCERA MITA BELGIUM N.V.

Hermesstraat 8A 1930 Zaventem Belgium  
Phone: +32.(0)2.720.9270

## KYOCERA MITA FRANCE S.A.

Parc Les Algorithmes  
Saint Aubin  
91194 GIF-SUR-YVETTE  
France  
Phone: +33.(0)1.6985.2600

## KYOCERA MITA ESPAÑA S.A.

Edificio Kyocera, Avda de Manacor N. 2,  
Urb. Parque Rozas 28290 Las Rozas,  
Madrid, Spain  
Phone: +34.(0)91.631.8392

## KYOCERA MITA FINLAND OY

Kirvesmiehenkatu 4 00810 Helsinki,  
Finland  
Phone: +358.(0)9.4780.5200

## KYOCERA MITA (SCHWEIZ) AG

Holzliwisen Industriestrasse 28  
8604 Volketswil, Switzerland  
Phone: +41.(0)1.908.4949

## KYOCERA MITA DEUTSCHLAND GMBH

Mollsfeld 12 D-40670 Meerbusch,  
Germany  
Phone: +49.(0)2159.918.0

## KYOCERA MITA GMBH AUSTRIA

Eduard-Kittenberger Gasse 95  
1230 Wien, Austria  
Phone: +43.(0)1.86338.0

## KYOCERA MITA SVENSKA AB

Box 1402 171 27 Solna, Sweden  
Phone: +46.(0)8.546.550.00

## KYOCERA MITA NORGE

Postboks 150 Oppsal, NO 0619 Oslo  
Olaf Helsetsvet 6, NO 0694 Oslo  
Phone: +47.(0)22.62.73.00

## KYOCERA MITA DANMARK A/S

Slotsmarken 11, 2  
DK-2970 Hørsholm, Denmark  
Phone: +45.7022.3880

## KYOCERA MITA PORTUGAL LDA.

Rua do Centro Cultural, no 41 1700-106  
Lisbon, Portugal  
Phone: +351.(0)21.842.9100

## KYOCERA MITA SOUTH AFRICA

(PTY) LTD.  
527 Kyalami Boulevard,  
Kyalami Business Park 1685 Midrand South  
Phone: +27.(0)11.466.3290

## KYOCERA MITA

## AMERICA, INC.

### Headquarters:

225 Sand Road,  
Fairfield, New Jersey 07004-0008,  
U.S.A.  
Phone: (973) 808-8444

## KYOCERA MITA AUSTRALIA PTY.

LTD.  
Level 3, 6-10 Talavera Road, North Ryde,  
N.S.W. 2113 Australia  
Phone: (02) 9888-9999

## KYOCERA MITA NEW ZEALAND LTD.

1-3 Parkhead Place, Albany  
P.O. Box 302 125 NHPC, Auckland,  
New Zealand  
Phone: (09) 415-4517

## KYOCERA MITA (THAILAND) CORP., LTD.

9/209 Ratchada-Prachachem Road,  
Bang Sue, Bangkok 10800, Thailand  
Phone: (02) 586-0320

## KYOCERA MITA SINGAPORE PTE LTD.

121 Genting Lane, 3rd Level,  
Singapore 349572  
Phone: 67418733

## KYOCERA MITA HONG KONG LIMITED

11/F., Mita Centre,  
552-566, Castle Peak Road,  
Tsuen Wan, New Territories,  
Hong Kong  
Phone: 24297422

## KYOCERA MITA TAIWAN

Corporation.  
7F-1~2, No.41, Lane 221, Gangchi Rd.  
Neihu District, Taipei, Taiwan, 114. R.O.C.  
Phone: (02) 87511560

## KYOCERA MITA

## Corporation

2-28, 1-chome, Tamatsukuri, Chuo-ku  
Osaka 540-8585, Japan  
Phone: (06) 6764-3555  
<http://www.kyoceramita.com>