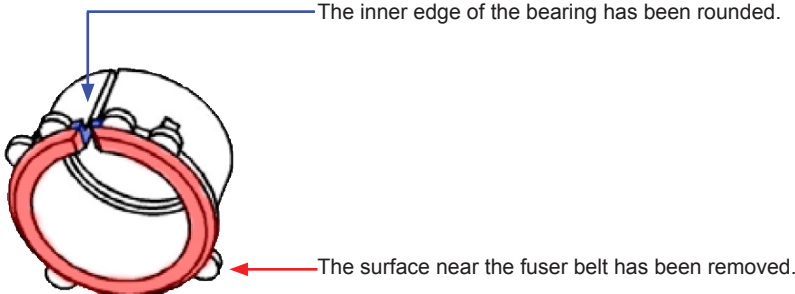


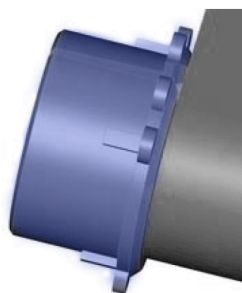
SB Number:	SB 2FZ-057	Creation Date: 12/01/2010
Subject:	Noise may arise from the fuser unit and the fuser belt may tear.	
Model:	KM-C2520/3225/3232/2525E/3232E/4035E, TASKalfa250ci/300ci/400ci/500ci	

Phenomenon	Noise may arise from the fuser section.
-------------------	---

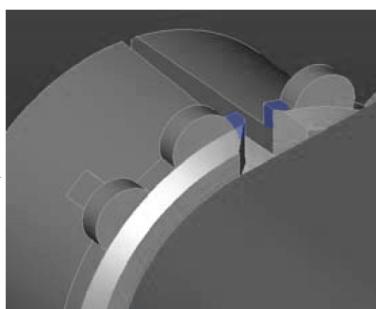
Cause	The bearing makes contact with the fuser belt. If the fuser unit keeps operating under this condition, the edge of the fuser belt may run over the bearing, which may result in a torn fuser belt.
--------------	---

Solution	<p>The shape of the bearing has been changed as follows:</p> 
-----------------	--

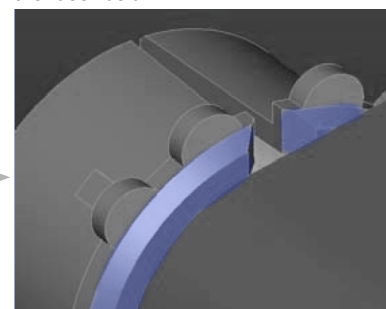
Old condition: Side view of the bearing and fuser belt (grey colour).



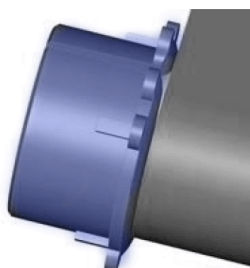
The belt may get caught by the sharp inner edges of the bearing.



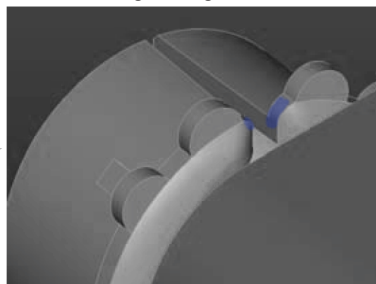
Sound may arise, due to contact between the surface of the bearing and the fuser belt.



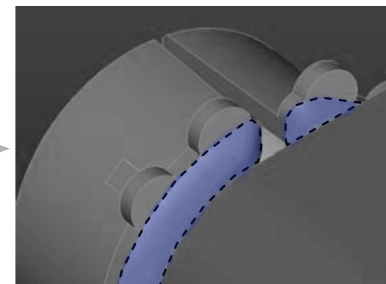
New condition: Side view of the bearing and fuser belt (grey colour).



The rounded shape of the inner edge of the bearing ensures that the fuser belt does not get caught.



Due to the removed surface, contact with the fuser belt will be avoided.



Parts	No.	Old Parts No.	New Parts No.	Description	Q'TY		Interchange-ability		SP
					Old	New	Old	New	
	1	302FZ9353A 2FZ9353A	302FZ9353B 2FZ9353B	PARTS FUSER 110 ASSY (For the KM-C2520/3225/ 3232/2525E/3232E)					
	2	302FZ9316C 2FZ9316C	302FZ9316D 2FZ9316D	PARTS FUSER 120 ASS'Y (For the KM-C2520/3225/ 3232/2525E/3232E)	1	1	X	O	O
	3	302FZ9317C 2FZ9317C	302FZ9317D 2FZ9317D	PARTS FUSER 200 ASS'Y (For the KM-C2520/3225/ 3232/2525E/3232E)	1	1	X	O	O
	4	302JD93055 2JD93055	302JD93056 2JD93056	PARTS FUSER 120 ASSY (For the KM-C4035E)	1	1	X	O	O
	5	302JD93065 2JD93065	302JD93066 2JD93066	PARTS FUSER 200 ASSY (For the KM-C4035E)	1	1	X	O	O
	6	302H793230 2H793230	302H793231 2H793231	PARTS FUSER 120 H UNIT (For the TASKalfa400ci/ 500ci)	1	1	X	O	O
	7	302H793240 2H793240	302H793241 2H793241	PARTS FUSER 240 H UNIT (For the TASKalfa400ci/ 500ci)	1	1	X	O	O
	8	302JZ93080 2JZ93080	302JZ93081 2JZ93081	PARTS FUSER 120 L UNIT (For the TASKalfa250ci/ 300ci)	1	1	X	O	O
	9	302JZ93090 2JZ93090	302JZ93091 2JZ93091	PARTS FUSER 240 L UNIT (For the TASKalfa250ci/ 300ci)	1	1	X	O	O

Classification	<input type="checkbox"/> Entire stock rework	<input type="checkbox"/> In-field modification at next visit	<input checked="" type="checkbox"/> In-field modification by case	<input type="checkbox"/> No modification necessary
Field measure	When the above mentioned phenomenon occurs, please replace the fuser unit with the latest type.			

Serial numbers of affected machines

Type	Serial number
KM-C2520/3225/3232/2525E/3232E/4035E	No production
TASKalfa250ci	QJK9605967
TASKalfa300ci	QJE9601387
TASKalfa400ci	QJA9600921
TASKalfa500ci	QHW9600540

Machines produced after the above mentioned serial numbers, should not have the above mentioned phenomena.

Serial numbers of affected units

Type	Serial number
MK-825A	QCV9602711
MK-826A	QCW9600324
MK-855A	QJR9600418

MK-865A	QJP9600449
PARTS FUSER 110 ASSY (For the KM-C2520/3225/3232/2525E/3232E)	KXQ9600047
PARTS FUSER 120 ASS'Y (For the KM-C2520/3225/3232/2525E/3232E)	KXN9602489
PARTS FUSER 200 ASS'Y (For the KM-C2520/3225/3232/2525E/3232E)	KXP9808860
PARTS FUSER 120 ASSY (For the KM-C4035E)	KXR9602183
PARTS FUSER 200 ASSY (For the KM-C4035E)	KXT9808653
PARTS FUSER 120 H UNIT (For the TASKalfa400ci/500ci)	MCA9603720
PARTS FUSER 240 H UNIT (For the TASKalfa400ci/500ci)	MCB9702256
PARTS FUSER 120 L UNIT (For the TASKalfa250ci/300ci)	MCD9604825
PARTS FUSER 240 L UNIT (For the TASKalfa250ci/300ci)	MCE9609487

Units produced after the above mentioned serial numbers, should not have the above mentioned phenomena.