

SB Number:	SB 2H0-010	Creation Date: 07/07/2008
Subject:	Operation panel PCB change and server error after downloading F/W etc.	
Model:	KM-2560/3060	

Contents of changes	1	<p>Operation panel PCB has been changed for productivity improvement. Due to this change the following measures have been taken:</p> <ol style="list-style-type: none"> 1. Panel code dimm (302H094070) has been removed. 2. Wires (No.4) till (No.9) have been changed due to the smaller size of the new operation panel PCB. 3. The firmware has been changed. <p>See page 2,3,4 and below for further details.</p>
	2	Server error after downloading MMI and main firmware at the same time. (See page 4 and 5)
	3	Machine recovery procedure after power failure, during firmware upgrade has been changed. (See Page 5)

Operation panel PCB 302H094350



Operation panel PCB 302H094600



Latest firm-ware as of March 2008	Type	Program No.	Version
	MAIN	2H0_2F00.011.006	011.006
	ENGINE	2H0_1000.008.002	008.002
	MMI2	2H0_7A00. 011.006	011.006

Classification	<input type="checkbox"/> Entire stock rework <input type="checkbox"/> In-field modification at next visit <input type="checkbox"/> In-field modification by case <input checked="" type="checkbox"/> No modification necessary
Field measure	Upgrade the firmware to the latest version before replacing the operation panel PCB. Follow the instructions on page 5, if a power failure occurs when updating the machines firmware.

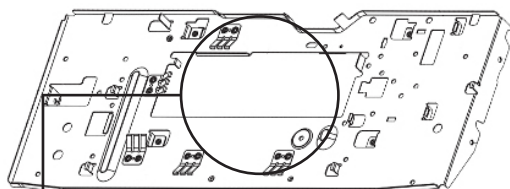
Affected serial numbers	Type	Changes	Serial number
	KM-2560	Above mentioned parts, main and MMI firmware version 010.029	QAW8302720 and higher
		Main and MMI firmware version 011.006	QAW8403166 and higher
	KM-3060	Above mentioned parts, main and MMI firmware version 010.029	QBA8302425 and higher
		Main and MMI firmware version 011.006	QBA84702537 and higher

Parts	No.	Old Parts No.	New Parts No.	Description	Q'TY		Interchangeability		SP
					Old	New	Old	New	
	1	302H093142 2H093142	302H093143 2H093143	PARTS OPERATION UNIT EXP	1	1	X	X	O
PCB	2	302H094350 2H094350	302H094600 2H094600	+PARTS,PWB PANEL2 ASSY,SP	1	1	X	X	O
	3	302H094070 2H094070	-----	+PARTS,PANEL CODE DIMM ASS'Y,SP	1	-	X	-	O
Wire	4	302H046010 2H046010	302GR46170 2GR46170	+WIRE PANEL LCD	1	1	X	X	O
	5	302H046030 2H046030	302H046820 2H046820	+WIRE OPERATION RIGHT(M)	1	1	X	X	-
	6	302H046050 2H046050	302H046830 2H046830	+WIRE MAIN-PANEL IF(M)	1	1	X	X	-
	7	302H046080 2H046080	302H046840 2H046840	+WIRE OPERATION UPPER(M)	1	1	X	X	-
	8	302H046400 2H046400	302H046850 2H046850	+WIRE PANEL(M)	1	1	X	X	
	9	302GR46570 2GR46570	302H046810 2H046810	+WIRE PANEL INVERTER (M)	1	1	X	X	-
Wire material	10	-----	302H005701 2H005701	+FILM USB WIRE	-	1	-	X	-
	11	-----	7YZM510011 -++H01 YZ049270	+ACCESS.SPACER	-	1	-	X	-
	12	-----	7YZM610001 -++H01 YZ010230	+ACCESS SADDLE	-	1	-	X	-
	13	7YZM610007 -++H01 YZ023340	7YZM610007 -++H01 YZ023340	+ACCESS.SADDLE	2	3	O	-	-
	14	7YZM610008 -++H01 YZ037940	7YZM610008 -++H01 YZ037940	+ACCESS.SADDLE	1	3	O	-	-
	15	-----	7YZM610009 -++H01 YZ042980	+ACCESS.SADDLE	-	1	-	X	-
	16	M21AH010	-----	+BAND,RSG-130-V0	1	-	X	-	-
Parts 2, 4 to 15	17	-----	302H094580 2H094580	PARTS,PWB PANEL2 ASSY WITH WIRE SET,SP	-	1	-	O	-

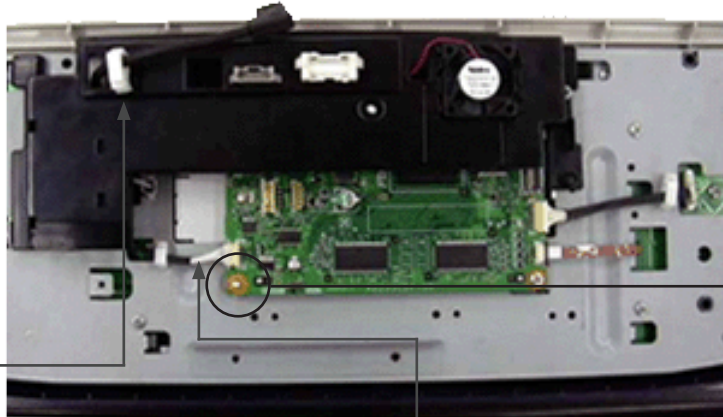
A part with "O" indicates regular maintenance parts.

"+" mark at the head of the description means it is a components part.

Item No 1: Operation panel PCB change



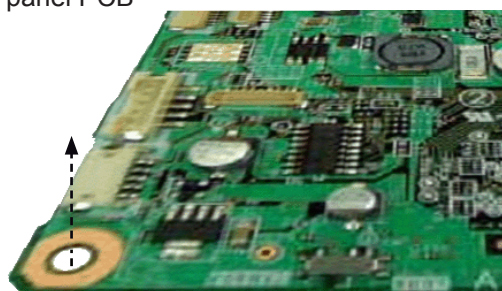
View from the back of the mount LCD (302H005090);
Operation panel PCB attached to the mount LCD



Binding band (M21AH010) has
been replaced with **access.
saddle** (7YZM610009)

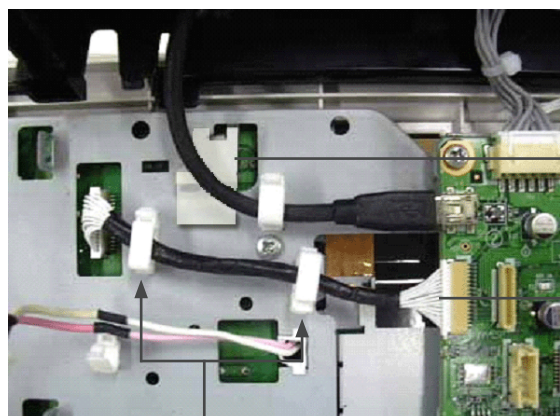
Protection tube has been
added to wire panel inverter
(302H046810)

Attach **access.spacer** (7YZM510011)
as shown below, to secure the operation
panel PCB



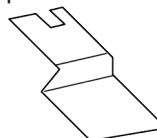
access.spacer

View from the back without the mount inverter



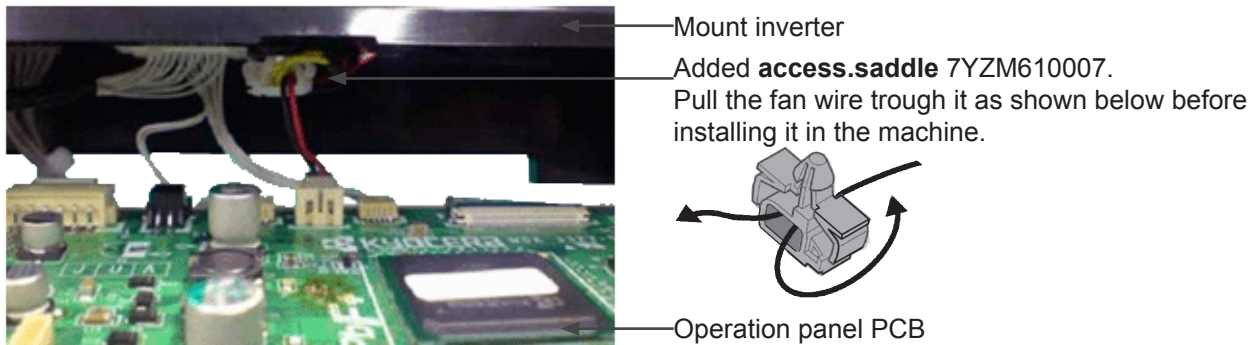
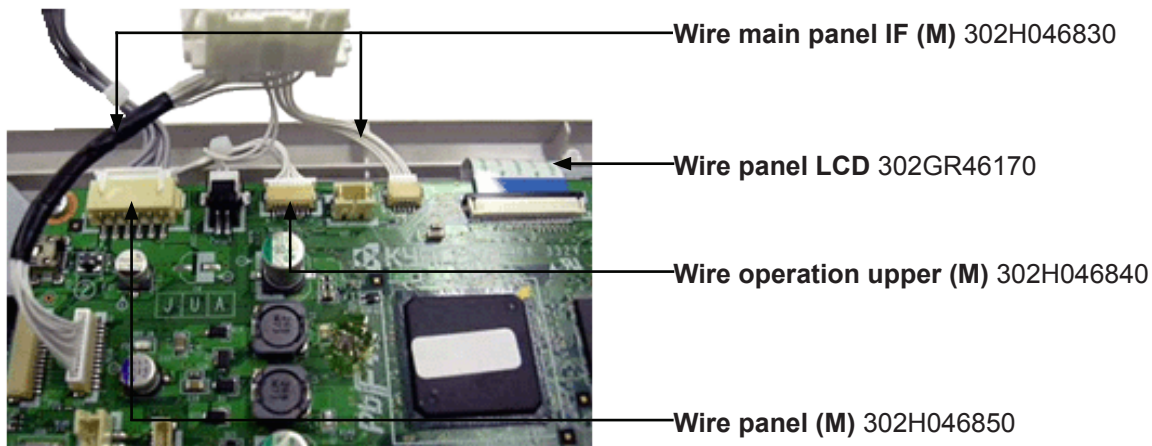
Access.saddle (7YZM610008) has been
added 2 times, to secure wire operation right
(M) (302H046820)

Added **Film USB wire** (302H005701) to
protect the coated layer of the USB cable.



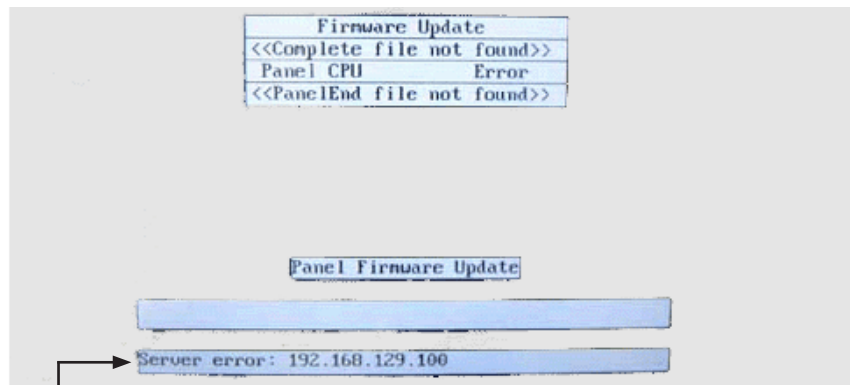
The size of the line and protection
tube of the **wire operation right (M)**
(302H046820) has been increased.

The line and protection tube sizes of the following wires have been increased.



Item No 2: Server error after downloading MMI and main firmware at the same time.

Phenomenon	<p>A server error may occur when MMI firmware is being installed on the machine after downloading both the main and MMI firmware at the same time.</p> <p>Please note that if firmware version 006. *** or older is upgraded, that this can only be done with a compact flash card and not with a USB stick.</p>
Solution	<p>Take the following steps to install the firmware correctly:</p> <ol style="list-style-type: none"> 1. Upgrade the engine firmware to the latest version. 2. Store the latest firmware (Version 011.006 or later) on a compact flash card or USB stick. 3. Turn the machine off and insert compact flash card or USB stick. 4. Switch the machine back on and the downloading will start. 5. Downloading of the main firmware will be completed correctly, while downloading MMI firmware a “server error” will be displayed on the operation panel. (See the picture on page No.5) 6. Turn the machine off and on again, and the MMI firmware will be downloaded correctly.

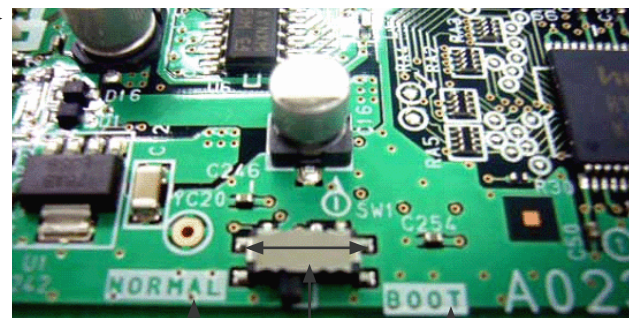
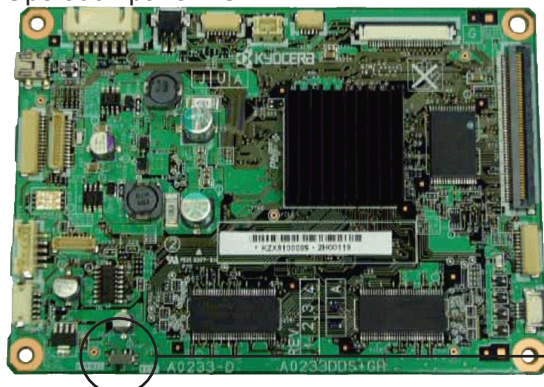


Sever error after downloading main and MMI firmware at the same time

Item No 3: Machine recovery procedure after power failure, during firmware upgrade has been changed.

Phenomenon	The operation panel does not work if a power failure occurs, during firmware upgrade.
Solution	<p>Take the following steps to solve this issue:</p> <ol style="list-style-type: none"> 1: Switch the machine off and remove the power cord. 2: Remove a possibly inserted CF card or USB memory stick. 3: Remove the bottom cover of the operation panel and set switch SW1 from "Normal" to "Boot", see attached Stratos_SW1ToBoot.jpg. 4: Re-insert the power cord and switch the machine on. <p>IMPORTANT NOTE: DO NOT switch off the machine. The machine will now attempt to recover the bootstrap needed to update firmware for the operationan panel PCB. This will take about 1 minute after which the "Memory" LED will be switched on"</p> <ol style="list-style-type: none"> 5: AFTER the "Memory" LED switches on, switch the machine off and remove the power cord. 6: Set switch SW1 from "Boot" back to "Normal". 7: Insert a CF card or USB memory stick containing the latest firmware version for this new type operation panel (MMI). 8: Switch the machine on and wait until the operation panel firmware is updated.

Operation panel PCB



Normal mode Sliding switch Boot mode