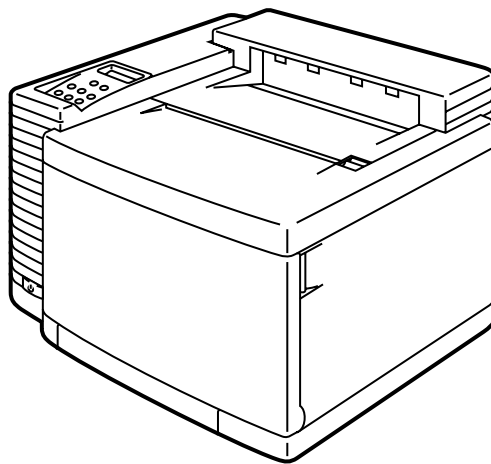




Brother Laser Printer **PARTS REFERENCE LIST**

MODEL: HL-2400C/2400Ce



Read this list thoroughly before maintenance work.

Keep this list in a convenient place for quick and easy reference at all times.

February, 2000
54S001BEO

NOTE FOR USING THIS PARTS REFERENCE LIST

1. In the case of ordering parts, it needs mentioning the following items:

- (1) Code
- (2) Q'ty
- (3) Description
- (4) Symbol (PCB No., Revision , and Parts location mounted on the PCB.)

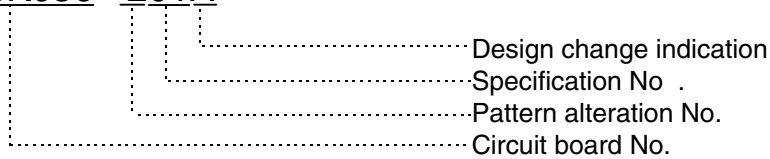
Note : No orders without Parts Code or Tool No. can be accepted.

< Example >

| | (1) | (2) | (3) | (4) | |
|---------|------|------|-------------|--------|--------|
| REF.NO. | CODE | Q'TY | DESCRIPTION | SYMBOL | REMARK |
| | | | | | |

Revision No.: marked on the **main printed circuit board**.

B48K056 - 201A



Revision No.: marked on the **power supply PCB**.

Rev. 0B



2. Design-changed parts :

If the parts are changed, any one of the following symbols is indicated in the REMARKS column.

- #A : compatible between old and new
- #B : replaceable from old to new
- #D : incompatible
- # : newly established

3. The original of this list was made based on the information available in February, 2000.

4. Parts are subject to change in design without prior notice.

CONTENTS

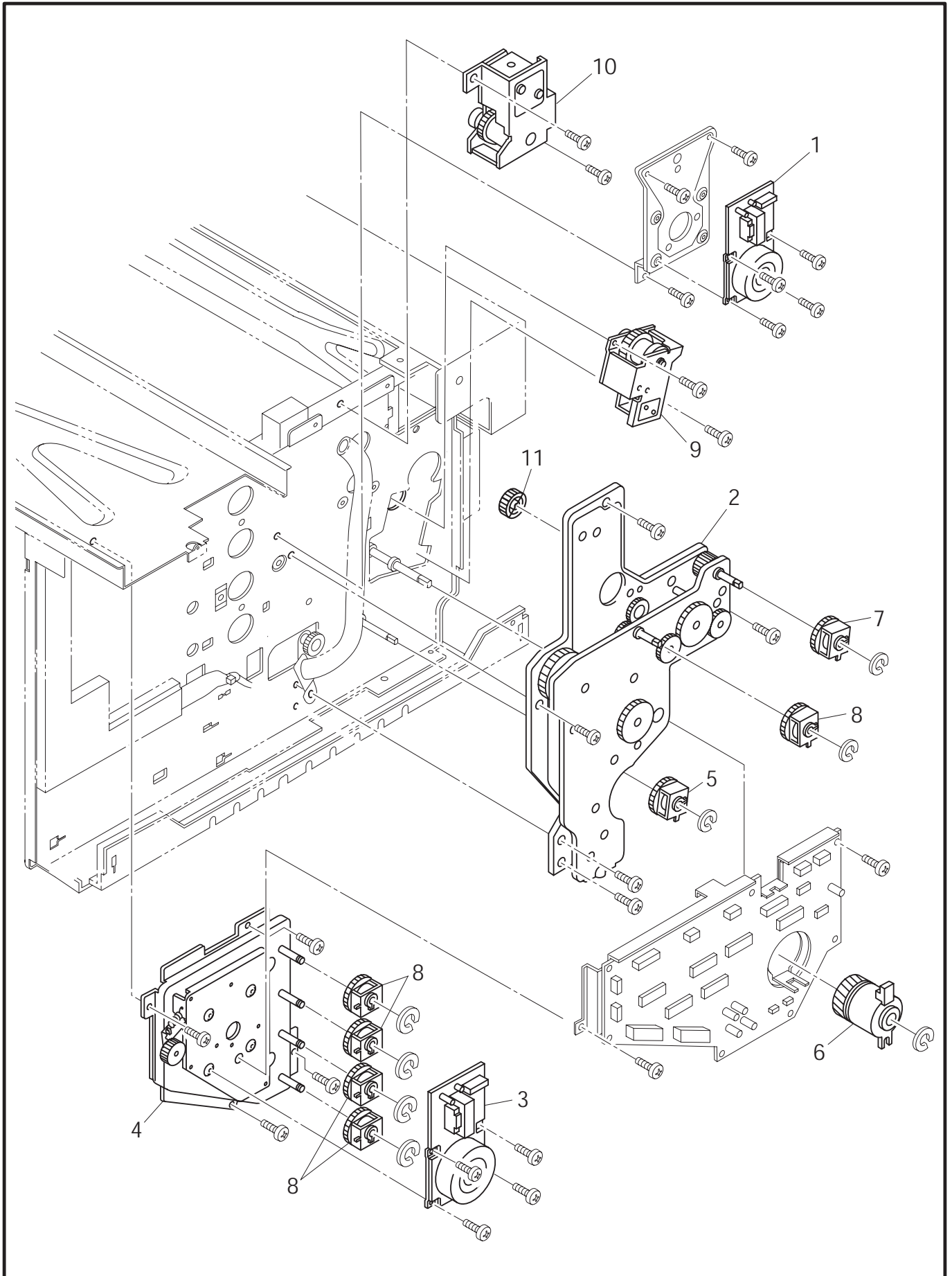
| | |
|--|----|
| 1. DRIVE | 1 |
| 2. FRAME..... | 3 |
| 3. SCANNER UNIT | 5 |
| 4. MEDIA CASSETTE | 5 |
| 5. TRANSFER UNIT..... | 7 |
| 6. PAPER EXIT UNIT..... | 7 |
| 7. FUSING UNIT | 9 |
| 8. MAIN PCB..... | 11 |
| 9. COVER | 13 |
| 10. MCTL PCB | 15 |
| 11. IOD PCB | 15 |
| 12. POWER SUPPLY PCB | 17 |
| 13. HIGH VOLTAGE POWER SUPPLY..... | 17 |
| 14. AC CORDS | 19 |
| 15. ACCESSORIES | 19 |
| 16. PACKING MATERIALS | 21 |
| 17. PERIODICAL REPLACEMENT PARTS | 21 |
| 18. HARD DISK | 23 |

1. DRIVE

| REF.NO | CODE | Q'TY | DESCRIPTION | REMARK |
|--------|-----------|------|-----------------------|--------|
| 1 | UH3500001 | 1 | MAIN MOTOR | ADD |
| 2 | UH1941001 | 1 | MAIN GEAR UNIT | |
| 3 | UH1942001 | 1 | DEVELOPER DRIVE MOTOR | |
| 4 | UH1943001 | 1 | DEVELOPER DRIVE UNIT | |
| 5 | UH3494001 | 1 | PAPER FEEDING CLUTCH | |
| 6 | UH3495001 | 1 | REGISTRATION CLUTCH | |
| 7 | UH3496001 | 1 | FUSER CLUTCH | |
| 8 | UH3497001 | 5 | DEVELOPER CLUTCH | |
| 9 | UH3498001 | 1 | TR CAM CLUTCH 3 | |
| 10 | UH3499001 | 1 | DRUM CLEANER SOLENOID | |
| 11 | LJ3720001 | 1 | SL1 MD GEAR 17 | |

MODEL HL-2400C/HL-2400Ce 54S-301/302

1. DRIVE



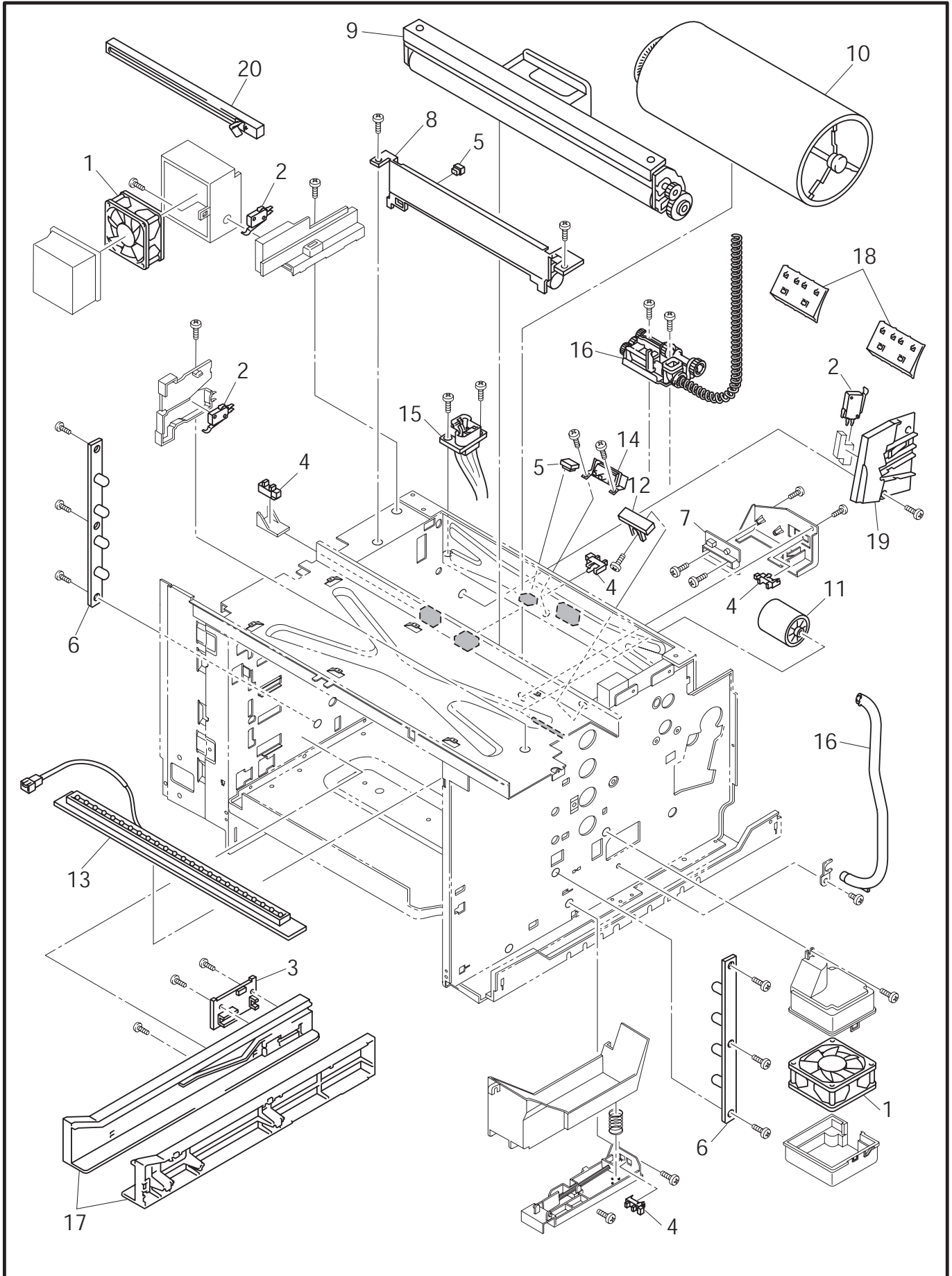
MODEL HL-2400C 54S-301

2. FRAME

| REF.NO | CODE | Q'TY | DESCRIPTION | REMARK |
|--------|-----------|------|---------------------------|--------|
| 1 | UH1944001 | 2 | COOLING FAN MOTOR | |
| 2 | UH1946001 | 3 | INTERLOCK SWITCH | |
| 3 | UH1947001 | 1 | PAPER SIZE SENSOR | |
| 4 | UH1948001 | 4 | PAPER SENSOR | |
| 5 | UH1949001 | 2 | BELT SENSOR | |
| 6 | UH1950001 | 1 | TONER SENSOR ASSY | |
| 7 | UH1996001 | 1 | OHP SENSOR | |
| 8 | UH3469001 | 1 | WASTE TONER FEEDER (U) | |
| 9 | UH3483001 | 1 | DRUM CLEANER | |
| 10 | UH3484001 | 1 | TRANSFER DRUM | |
| 11 | UH3485001 | 1 | PAPER FEEDING ROLLER | |
| 12 | UH3486001 | 1 | SEPARATOR PAD | |
| 13 | UH3487001 | 1 | ERASE LAMP | |
| 14 | UH3488001 | 1 | OIL SENSOR | |
| 15 | UH3492001 | 1 | FUSER CONNECTOR | |
| 16 | LJ2052001 | 1 | WASTE TONER FEEDER (L) | |
| 17 | LJ3718001 | 1 | FP CASSETTE GUIDE SET | ADD |
| 18 | LJ3719001 | 1 | SL1 PAPER GUIDE D (2 PCS) | ADD |
| 19 | LJ3721001 | 1 | TR TERMINAL BASE | ADD |
| 20 | LJ3714001 | 1 | SL1 BC CHARGER | ADD |
| 21 | LJ3716001 | 1 | FUSER OIL FELT | ADD |

MODEL HL-2400C/HL-2400Ce 54S-301/302

2. FRAME



MODEL HL-2400C/HL-2400Ce 54S-301/302

T/I NO. PR99077

3. SCANNER UNIT

| REF.NO | CODE | Q'TY | DESCRIPTION | REMARK |
|--------|-----------|------|--------------|--------|
| 1 | UH3482001 | 1 | OPTICAL UNIT | |

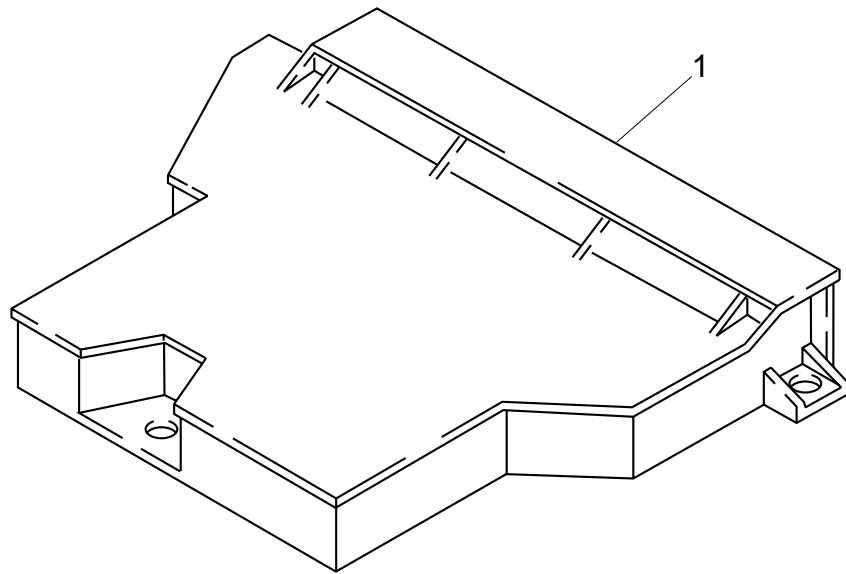
MODEL HL-2400C/HL-2400Ce 54S-301/302

4. MEDIA CASSETTE

| REF.NO | CODE | Q'TY | DESCRIPTION | REMARK |
|--------|-----------|------|----------------|--------|
| 1 | UH3493001 | 1 | PAPER CASSETTE | |

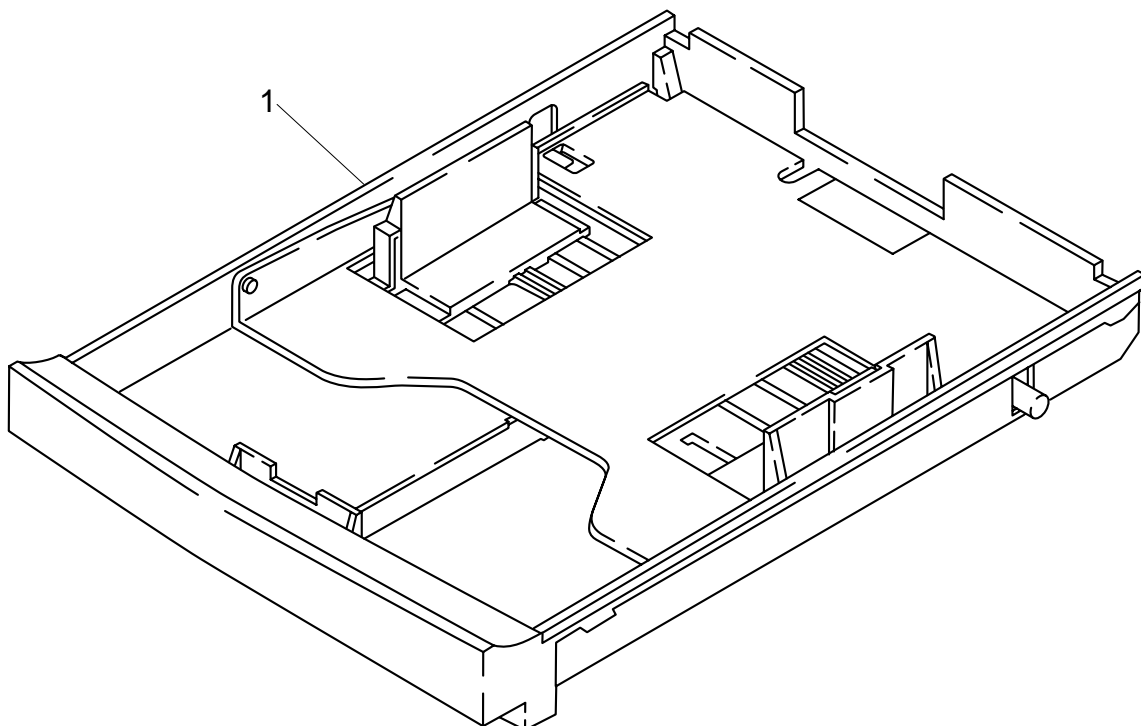
MODEL HL-2400C/HL-2400Ce 54S-301/302

3 . SCANNER UNIT



MODEL HL-2400C 54S-301

4 . MEDIA CASSETTE



MODEL HL-2400C 54S-301

5. TRANSFER UNIT

| REF.NO | CODE | Q'TY | DESCRIPTION | REMARK |
|--------|-----------|------|-------------------|--------|
| 1 | UH3547001 | 1 | TRANSFER UNIT2 | |
| 1-1 | UH3480001 | 1 | TRANSFER ROLLER | |
| 1-2 | UH3548001 | 1 | PAPER DISCHARGER2 | |

MODEL HL-2400C/HL-2400Ce 54S-301/302

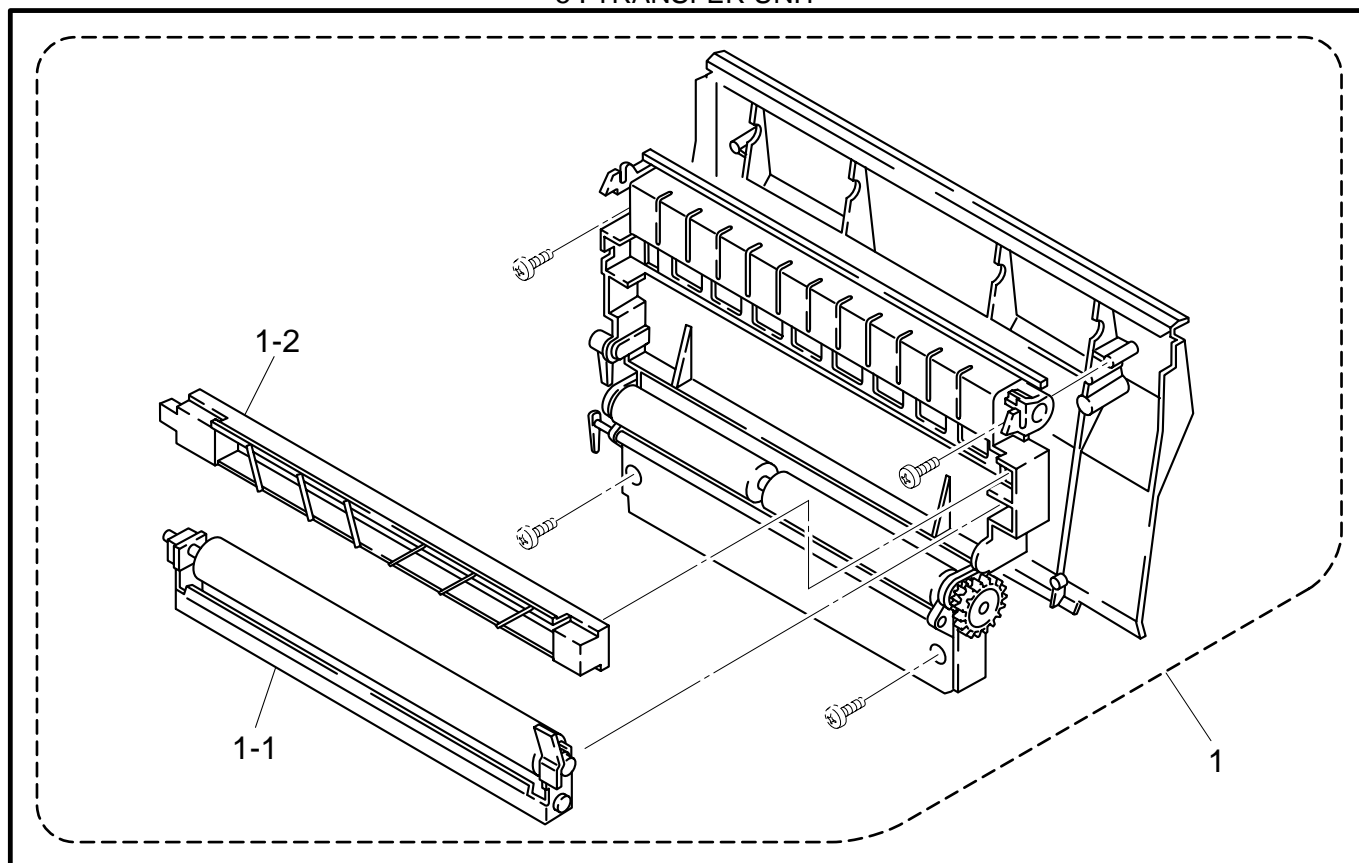
T/I NO. PR98173

6. PAPER EXIT UNIT

| REF.NO | CODE | Q'TY | DESCRIPTION | REMARK |
|--------|-----------|------|------------------------|--------|
| 1 | UH3459001 | 1 | PAPER EXIT UNIT | |
| 1-1 | UH3460001 | 1 | PAPER EXIT UNIT COVER | |
| 1-2 | UH3461001 | 1 | PAPER EXIT FRONT COVER | |
| 1-3 | UH3462001 | 1 | PAPER EXIT ROLLER | |
| 1-4 | UH3463001 | 1 | DISCHARGING BRUSH | |
| 1-5 | UH1944001 | 1 | COOLING FAN MOTOR | |
| 1-6 | UH1948001 | 2 | PAPER SENSOR | |

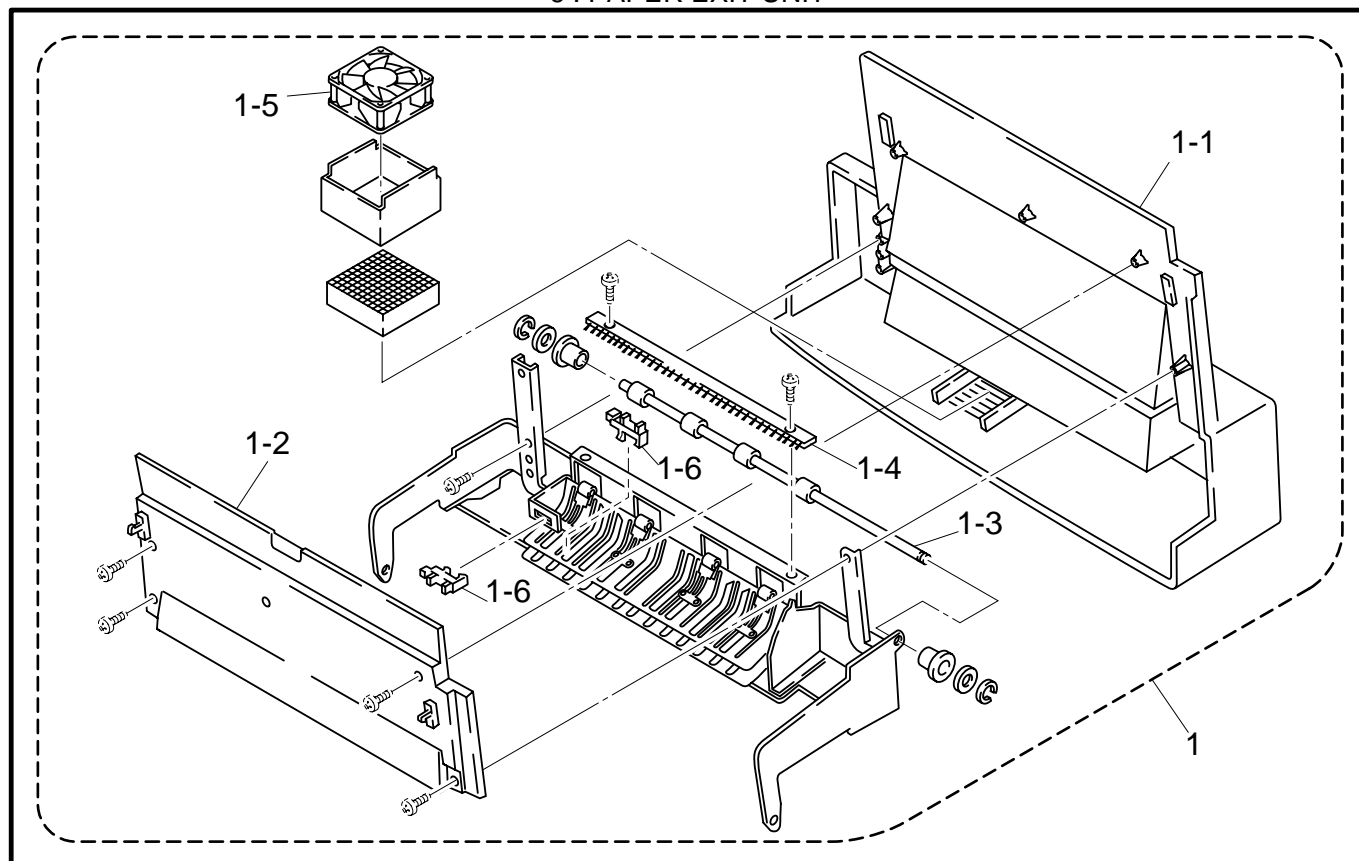
MODEL HL-2400C/HL-2400Ce 54S-301/302

5 . TRANSFER UNIT



MODEL HL-2400C 54S-301

6 . PAPER EXIT UNIT



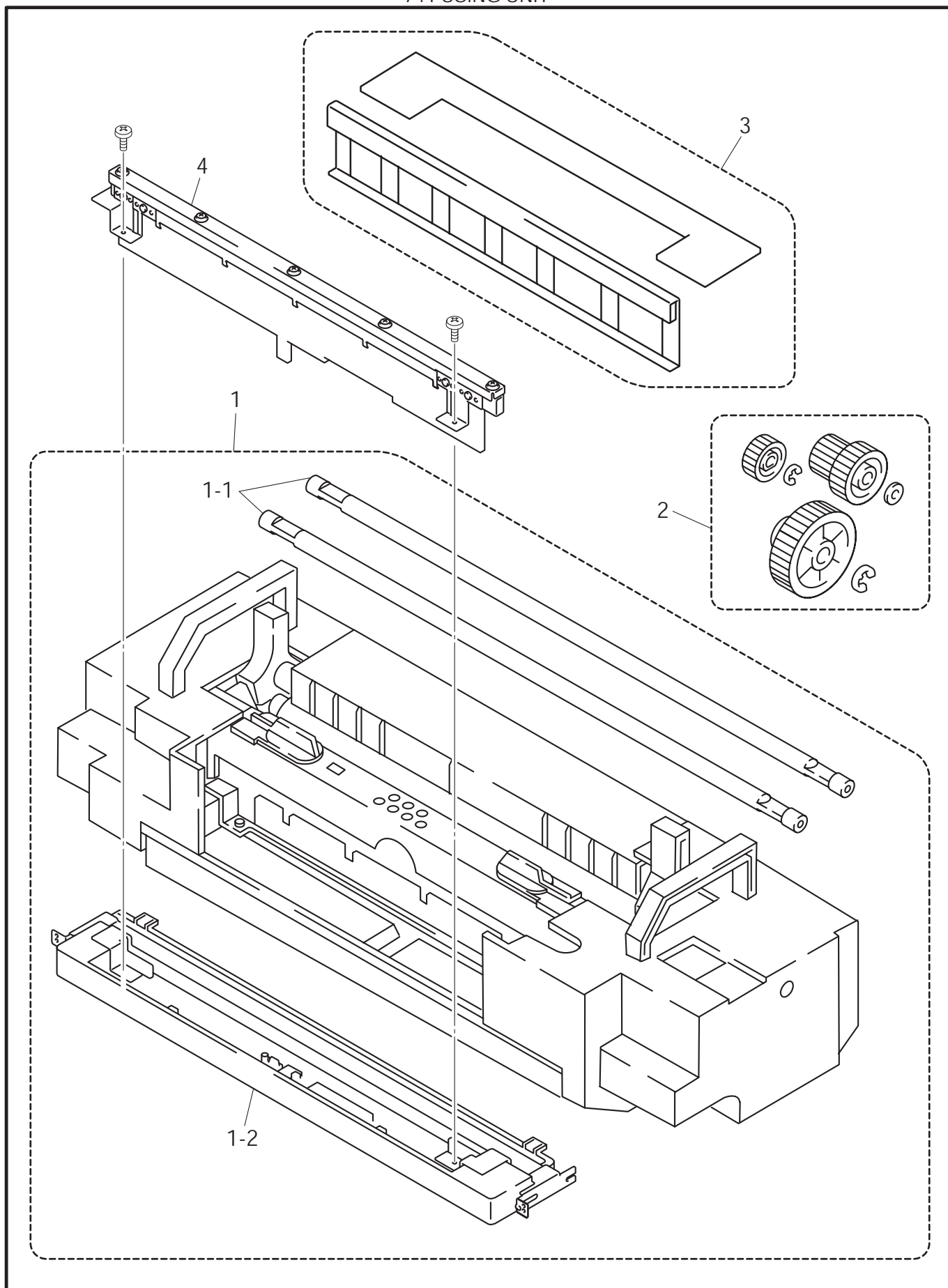
MODEL HL-2400C 54S-301

7. FUSING UNIT

| REF.NO | CODE | QTY | DESCRIPTION | REMARK |
|--------|-----------|-----|----------------------|--------|
| 1 | UH3470001 | 1 | FUSING UNIT (US) 2 | |
| 1 | UH3471001 | 1 | FUSING UNIT (EC) 2 | |
| 1-1 | UH3473001 | 1 | FUSING HEATER (US) 2 | |
| 1-1 | UH3474001 | 1 | FUSING HEATER (EC) 2 | |
| 1-1 | LJ2358001 | 1 | OIL PAN UNIT 2 | |
| 2 | LJ3715001 | 1 | SL1 FU GEAR SET | ADD |
| 3 | LJ3717001 | 1 | SL1 BR FELT ASSY | ADD |

MODEL HL-2400C/HL-2400Ce 54S-301/302

7 . FUSING UNIT



MODEL HL-2400C/HL-2400Ce 54S-301/302

8. MAIN PCB (2400C)

PR2002007

| REF.NO | CODE | Q'TY | DESCRIPTION | SYMBOL | REMARK |
|--------|-----------|------|------------------------|----------------------|--------|
| 1 | UK3900001 | 1 | MAIN PCB HLC1 | VER.1.45 VER.1.45 | |
| 2 | UK3902001 | 1 | MIO CONNECTOR PCB ASSY | | |
| 3 | UH1307001 | 1 | OPTIONAL I/O COVER H | | |
| 4 | UH1901001 | 1 | MAIN PCB PLATE | | |
| 5 | UH1903001 | 1 | MIO RAIL R | | |
| 6 | UH1940001 | 1 | MIO RAIL L | | |
| 7 | UH1904001 | 1 | CONNECTOR PCB HOLDER | | |
| 8 | UH1924001 | 2 | CARD BLIND | | |
| 9 | UK3942000 | 1 | MROM23C3210-2 | | |
| 10 | UK3941000 | 1 | MROM23C3210-1 | | |

MODEL HL-2400C 54S-301-101

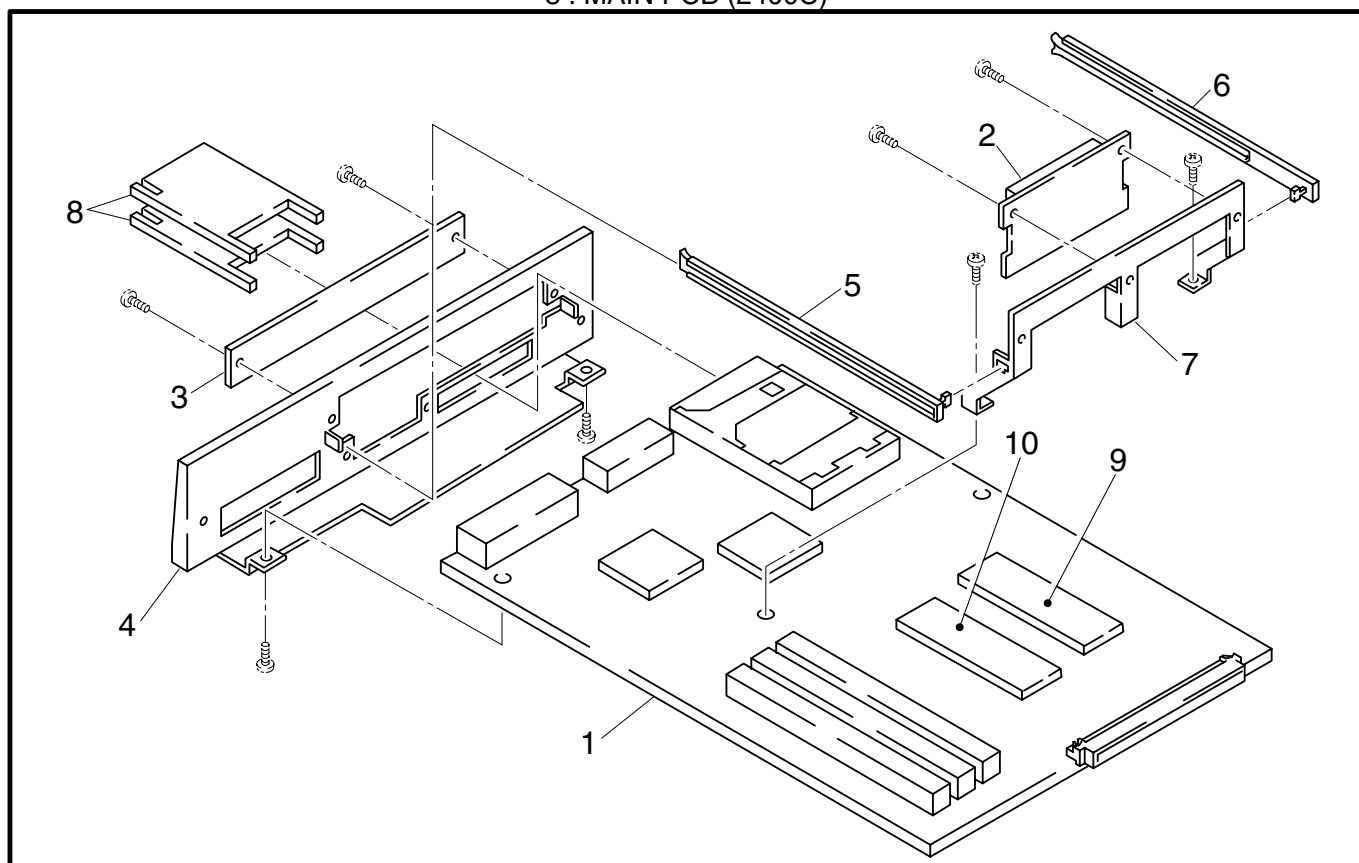
8. MAIN PCB (2400Ce)

| REF.NO | CODE | Q'TY | DESCRIPTION | SYMBOL | REMARK |
|--------|-----------|------|------------------------|--------------|----------|
| 1 | LJ8228001 | 1 | MAIN PCB ASSY HLCE | B512050-100F | VER.CHNG |
| 1-1 | LJ8265001 | 1 | MROM 23L3211-2 | | |
| 1-2 | LJ8264001 | 1 | MROM 23L3211-1 | | |
| 2 | UK3902001 | 1 | MIO CONNECTOR PCB ASSY | | |
| 3 | UH1307001 | 1 | OPTIONAL I/O COVER H | | |
| 4 | LJ8214001 | 1 | MAIN PCB PLATE | | |
| 5 | UH1903001 | 1 | MIO RAIL R | | |
| 6 | UH1940001 | 1 | MIO RAIL L | | |
| 7 | UH1904001 | 1 | CONNECTOR PCB HOLDER | | |
| 8 | UH1924001 | 2 | CARD BLIND | | |
| 9 | LJ8283001 | 1 | BRNET PCB ASSY (SP) | | |

MODEL HL-2400Ce 54S-302-101

T/I NO. PR2002007

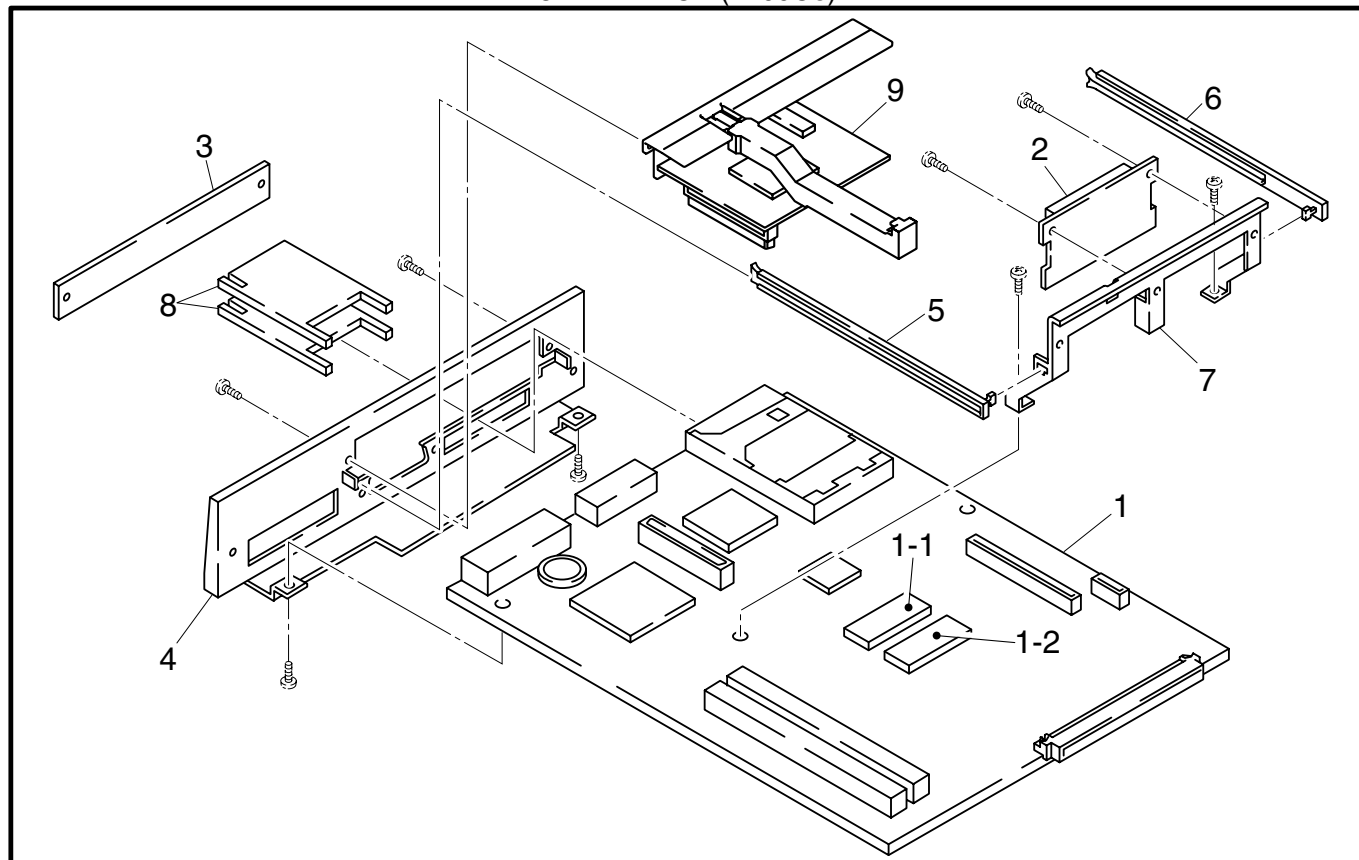
8 . MAIN PCB (2400C)



T/I NO. PR98038

MODEL HL-2400C 54S-301

8 . MAIN PCB (2400Ce)



T/I NO. PR2000036

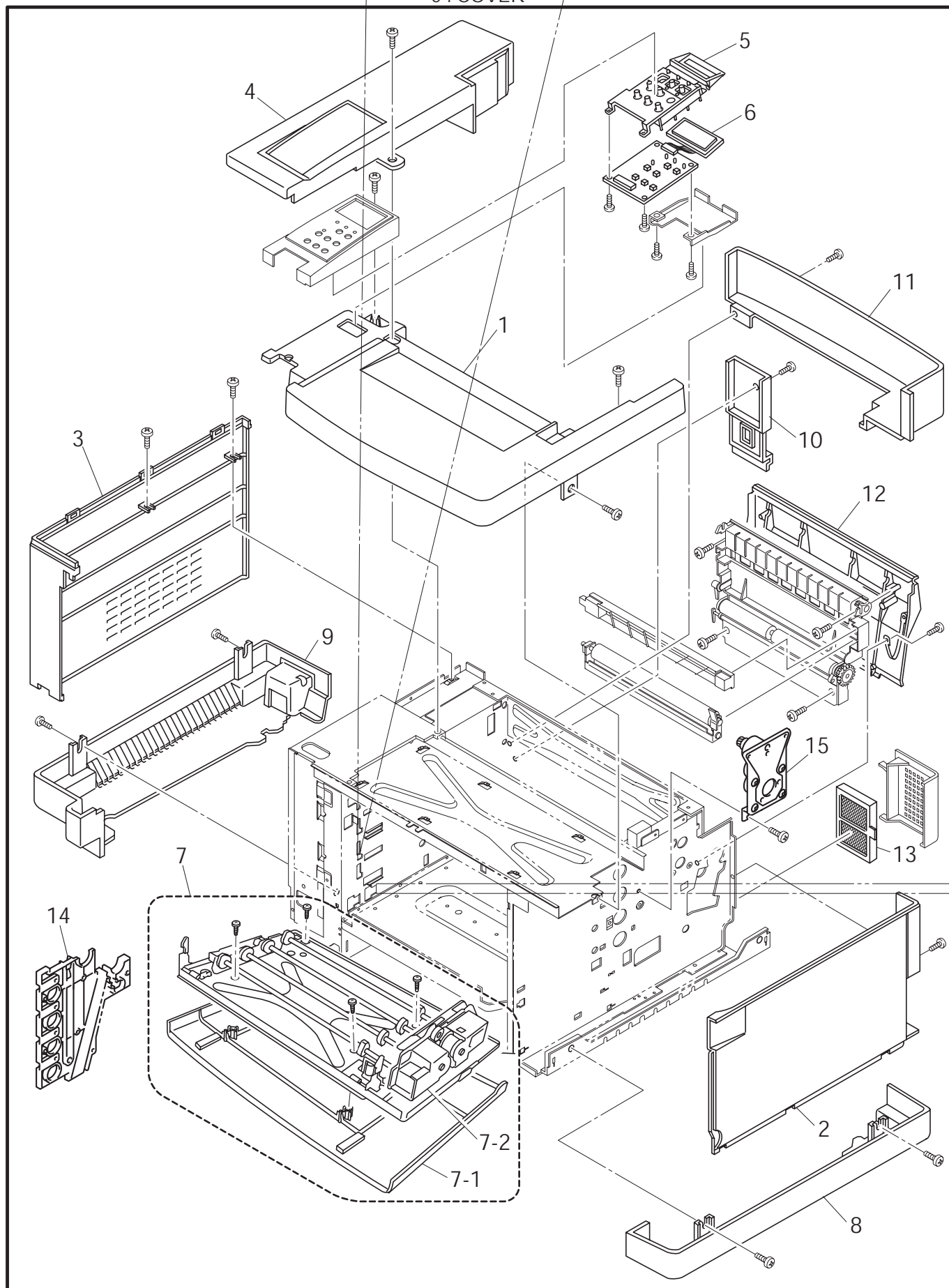
MODEL HL-2400Ce 54S-302

9. COVER

| REF.NO | CODE | Q'TY | DESCRIPTION | REMARK |
|--------|-----------|------|-------------------------------|-------------|
| 1 | UH3451001 | 1 | TOP COVER | |
| 2 | UH3452001 | 1 | SIDE COVER R | |
| 3 | UH3453001 | 1 | SIDE COVER L | |
| 4 | UH3454001 | 1 | UPPER SIDE COVER | |
| 5 | UH3455001 | 1 | PANEL BUTTON | |
| 6 | UH3456001 | 1 | PANEL PWB | |
| 7 | UH3457001 | 1 | FRONT COVER UNIT (HL2400C) | |
| 7 | LJ2259001 | 1 | FRONT COVER UNIT-E (HL2400Ce) | |
| 7-1 | UH3458001 | 1 | FRONT COVER (HL2400C) | ADD |
| 7-1 | LJ2260001 | 1 | FRONT COVER-E (HL2400Ce) | ADD |
| 7-2 | LJ2142001 | 1 | DE SOLENOID ASSY | Ref.NO.CHNG |
| 8 | UH3464001 | 1 | BASE COVER R | Ref.NO.CHNG |
| 9 | UH3465001 | 1 | BASE COVER L | Ref.NO.CHNG |
| 10 | UH3466001 | 1 | REAR COVER 2 | Ref.NO.CHNG |
| 11 | UH3467001 | 1 | REAR COVER U | Ref.NO.CHNG |
| 12 | UH3468001 | 1 | REAR COVER L | Ref.NO.CHNG |
| 13 | LM0310001 | 1 | OZONE FILTER E | Ref.NO.CHNG |
| 14 | LJ2852001 | 1 | S PLATE R ASSY | Ref.NO.CHNG |
| 15 | LJ2853001 | 1 | MD GEAR ASSY | Ref.NO.CHNG |

MODEL HL-2400C/HL-2400Ce 54S-301/302

9. COVER



MODEL HL-2400C/HL-2400Ce 54S-301/302

T/I NO. PR99137 / PR99182

10. MCTL PCB

PR2001116

| REF.NO | CODE | Q'TY | DESCRIPTION | SYMBOL | REMARK |
|--------|-----------|------|--|--------|--------|
| 1 | LM0089001 | 1 | MCTL PWB EC E F (After EMI standard-Europe only) | | CHNG |
| 1 | LM0091001 | 1 | MCTL PWB EC F,2400C | | ADD |
| 1 | LM0088001 | 1 | MCTL PWB 9 E | | CHNG |
| 1 | LM0090001 | 1 | MCTL PWB 9,2400C | | ADD |

MODEL HL-2400C/HL-2400Ce 54S-301/302

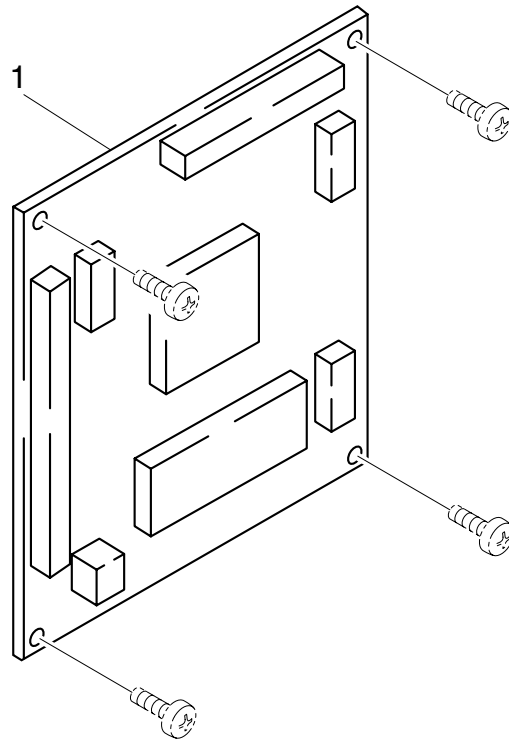
T/I NO. PR2001116

11. IOD PCB

| REF.NO | CODE | Q'TY | DESCRIPTION | REMARK |
|--------|-----------|------|-------------|--------|
| 1 | UH1998001 | 1 | IOD1 PWB | |
| 2 | UH1999001 | 1 | IOD2 PWB | |

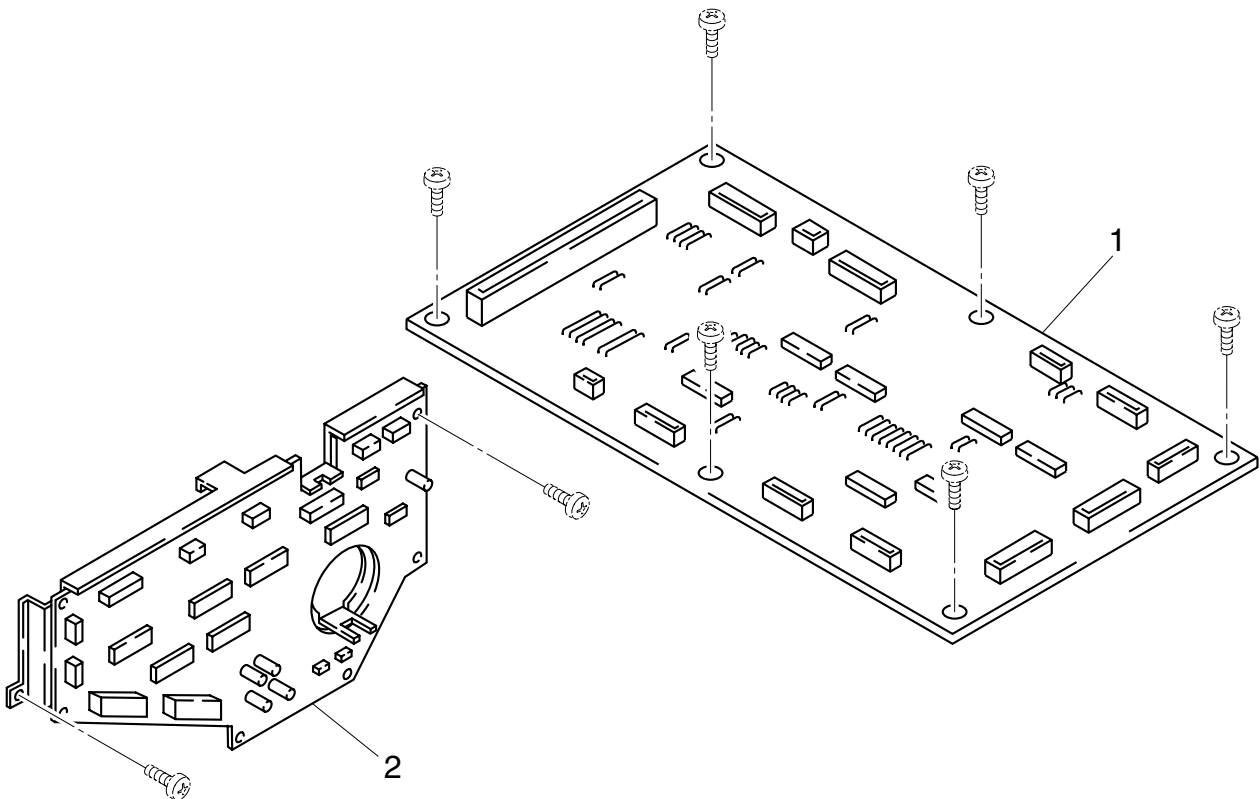
MODEL HL-2400C/HL-2400Ce 54S-301/302

10 . MCTL PCB



MODEL HL-2400C/HL-2400Ce 54S-301/302

11 . IOD PCB



MODEL HL-2400C/HL-2400Ce 54S-301/302

12. POWER SUPPLY UNIT

PR2001116

| REF.NO | CODE | Q'TY | DESCRIPTION | SYMBOL | REMARK |
|--------|-----------|------|------------------------------|--------|--------|
| 1 | UH3489001 | 1 | POWER SUPPLY UNIT, EC | | ADD |
| 1 | UH3490001 | 1 | POWER SUPPLY UNIT (US) | Rev: B | |
| 1 | LJ2762001 | 1 | POWER SUPPLY UNIT, EC F (EU) | Rev: B | |

MODEL HL-2400C/HL-2400Ce 54S-301/302

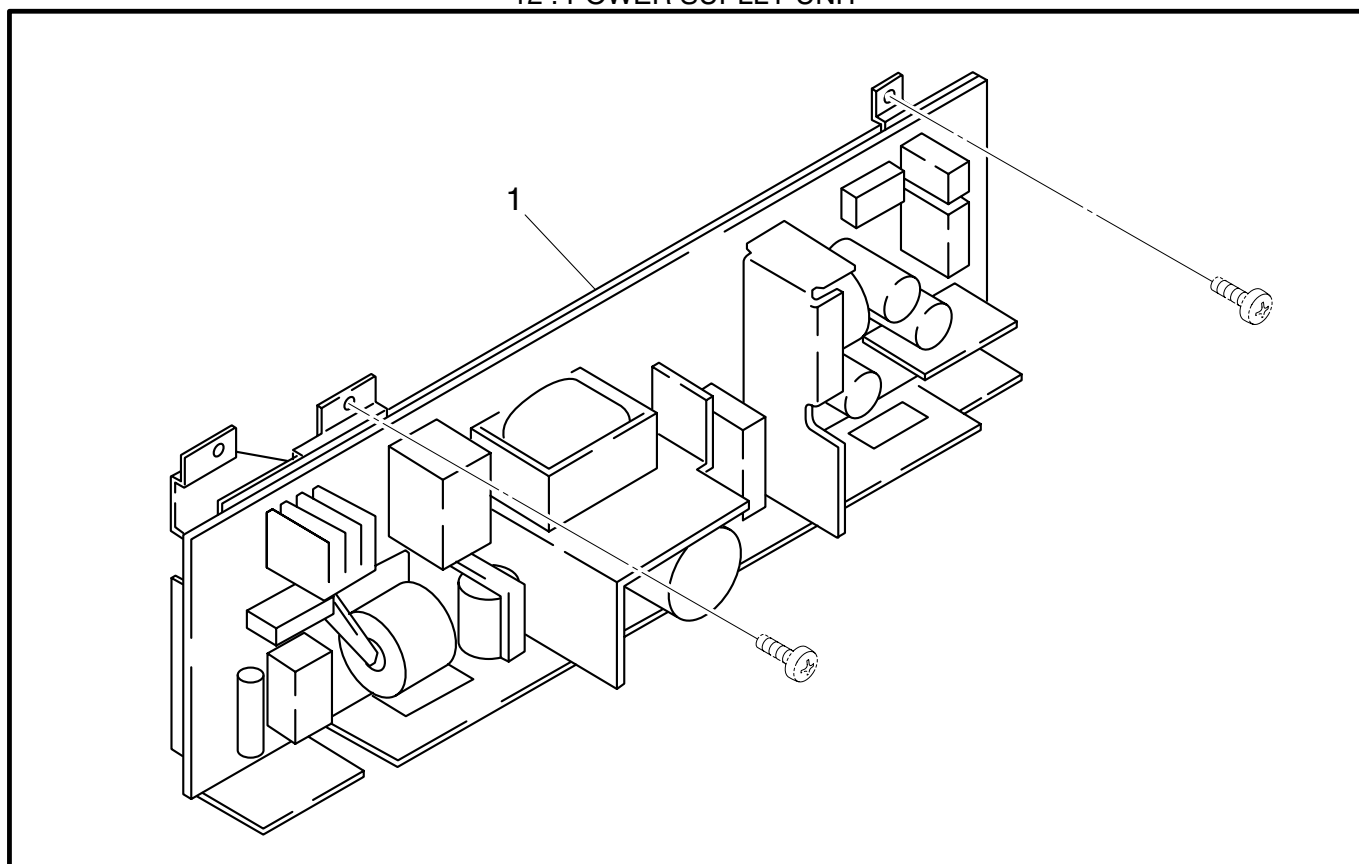
T/I NO. PR2001116

13. HIGH VOLTAGE POWER SUPPLY

| REF.NO | CODE | Q'TY | DESCRIPTION | REMARK |
|--------|-----------|------|-------------------|--------|
| 1 | UH2000001 | 1 | HIGH VOLTAGE UNIT | |

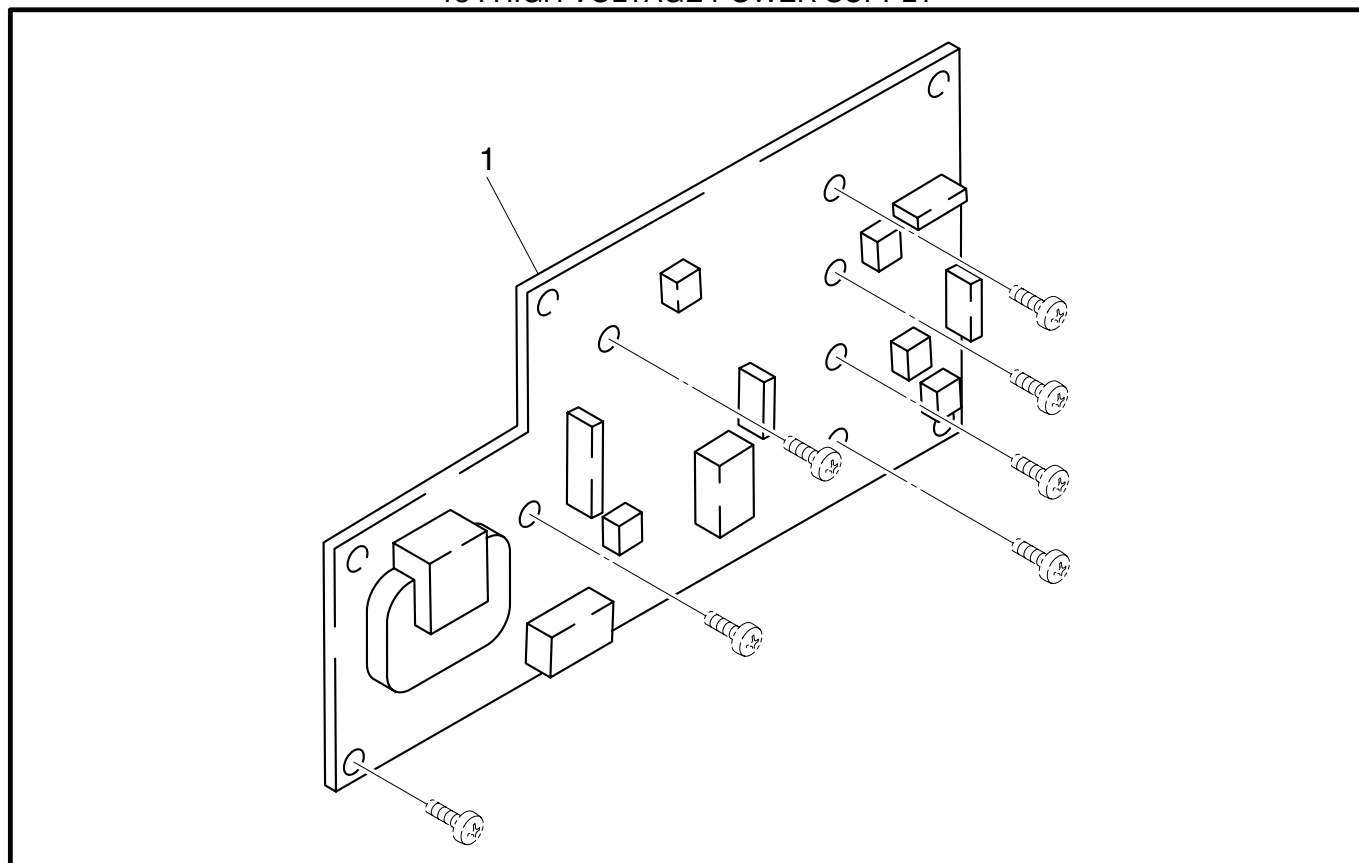
MODEL HL-2400C/HL-2400Ce 54S-301/302

12 . POWER SUPPLY UNIT



MODEL HL-2400C/HL-2400Ce 54S-301/302

13 . HIGH VOLTAGE POWER SUPPLY



MODEL HL-2400C/HL-2400Ce 54S-301/302

14. AC CORDS

| REF.NO | CODE | Q'TY | DESCRIPTION | REMARK |
|--------|-----------|------|------------------------|--------|
| 1A | UH1933001 | 1 | AC CORD US/CSA | |
| 1B | UH1052001 | 1 | AC CORD VDE | |
| 1C | UH1053001 | 1 | AC CORD SEV | |
| 1D | UH1054001 | 1 | AC CORD BS | |
| 1E | UH1055001 | 1 | AC CORD SAA | |
| 1F | U34320001 | 1 | AC CORD #4, BS WO/PLUG | |
| 1G | UK4094001 | 1 | AC CORD #5, DEMKO | |
| 1H | U34322001 | 1 | AC CORD #6, ISRAEL | |

MODEL HL-2400C/HL-2400Ce 54S-301/302-050

T/I NO. PR98046

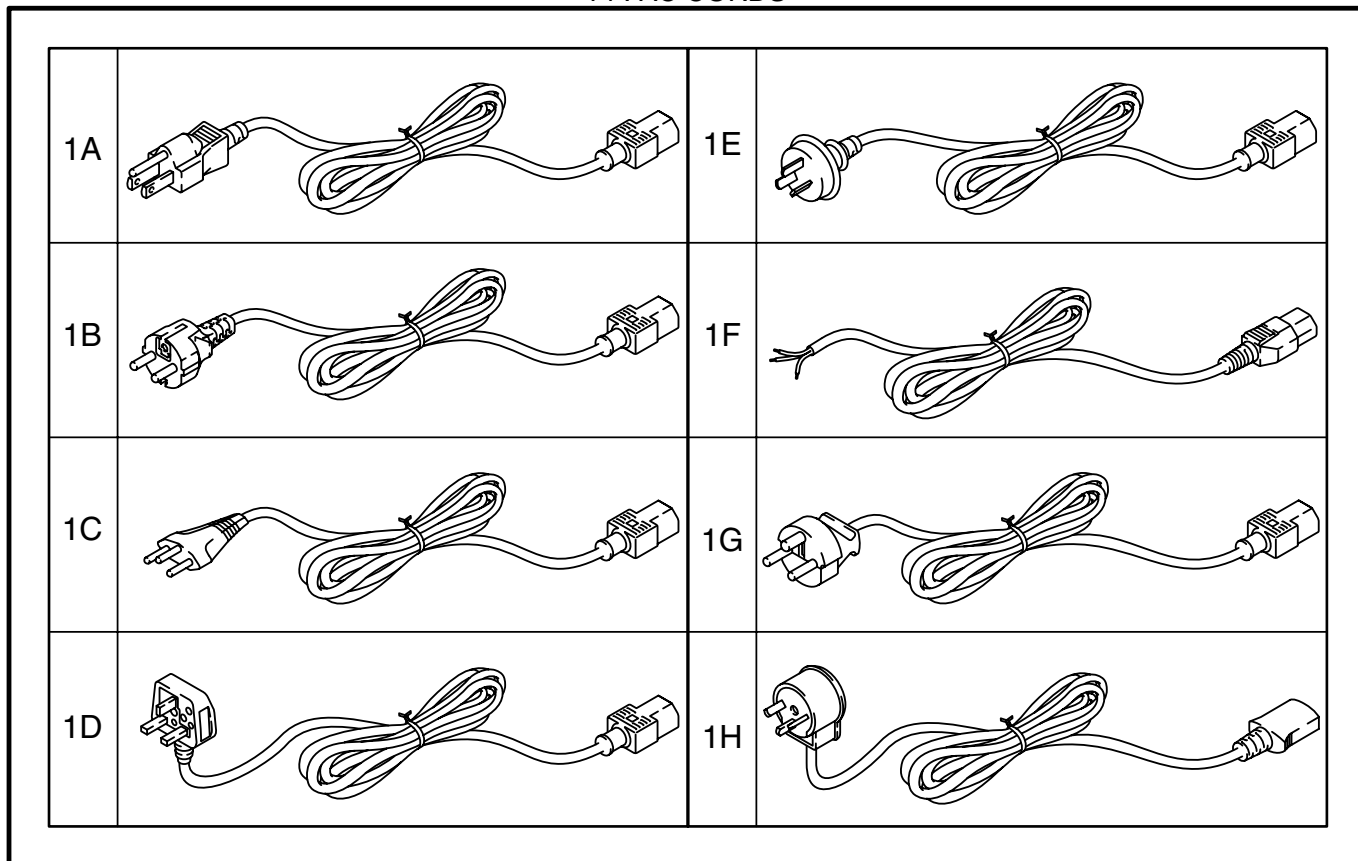
15. ACCESSORIES

| REF.NO | CODE | Q'TY | DESCRIPTION | REMARK |
|--------|-----------|------|--|--------|
| 1 | UK3850001 | 1 | P DRIVER DISK #1 (HL-2400C) | |
| 2 | UK3851001 | 1 | P DRIVER DISK #2 (HL-2400C) | |
| 3 | UK3852001 | 1 | P DRIVER DISK #3 (HL-2400C) | |
| 4 | UK3864001 | 1 | P DRIVER DISK PS (HL-2400C) | |
| 5 | UK3870001 | 1 | P DRIVER DISK MAC (HL-2400C) | |
| 6 | UK3866001 | 1 | P DRIVER DISK NT (HL-2400C) | |
| 7 | LJ2330001 | 1 | CD ASSY PS3 (HL-2400Ce) | |
| 8 | UK3854001 | 1 | USER'S MANUAL ENG. (HL-2400C) | |
| 8 | LJ2081001 | 1 | USER'S MANUAL ENG (HL-2400Ce) | |
| 8 | UK3855001 | 1 | USER'S MANUAL GER. (HL-2400C) | |
| 8 | LJ2112001 | 1 | USER'S MANUAL GER. (HL-2400Ce) | |
| 8 | UK3856001 | 1 | USER'S MANUAL FRA. (HL-2400C) | |
| 8 | LJ2082001 | 1 | USER'S MANUAL FRA. (HL-2400Ce) | |
| 8 | UK3857001 | 1 | USER'S MANUAL DUT. (HL-2400C) | |
| 8 | LJ2118001 | 1 | USER'S MANUAL DUT. (HL-2400Ce) | |
| 9 | UE2014001 | 1 | PE BAG 215X350H | |
| 10 | UK3676001 | 1 | P DRIVER DISK (E-MAIL PRINTING) (HL-2400C) | |
| 11 | UK4125001 | 1 | P DRIVER DISK NT #2 (HL-2400C) | |
| 12 | UK3928001 | 1 | PANTONE DISK PCL (HL-2400C) | |

MODEL HL-2400C/HL-2400Ce 54S-301/302-920

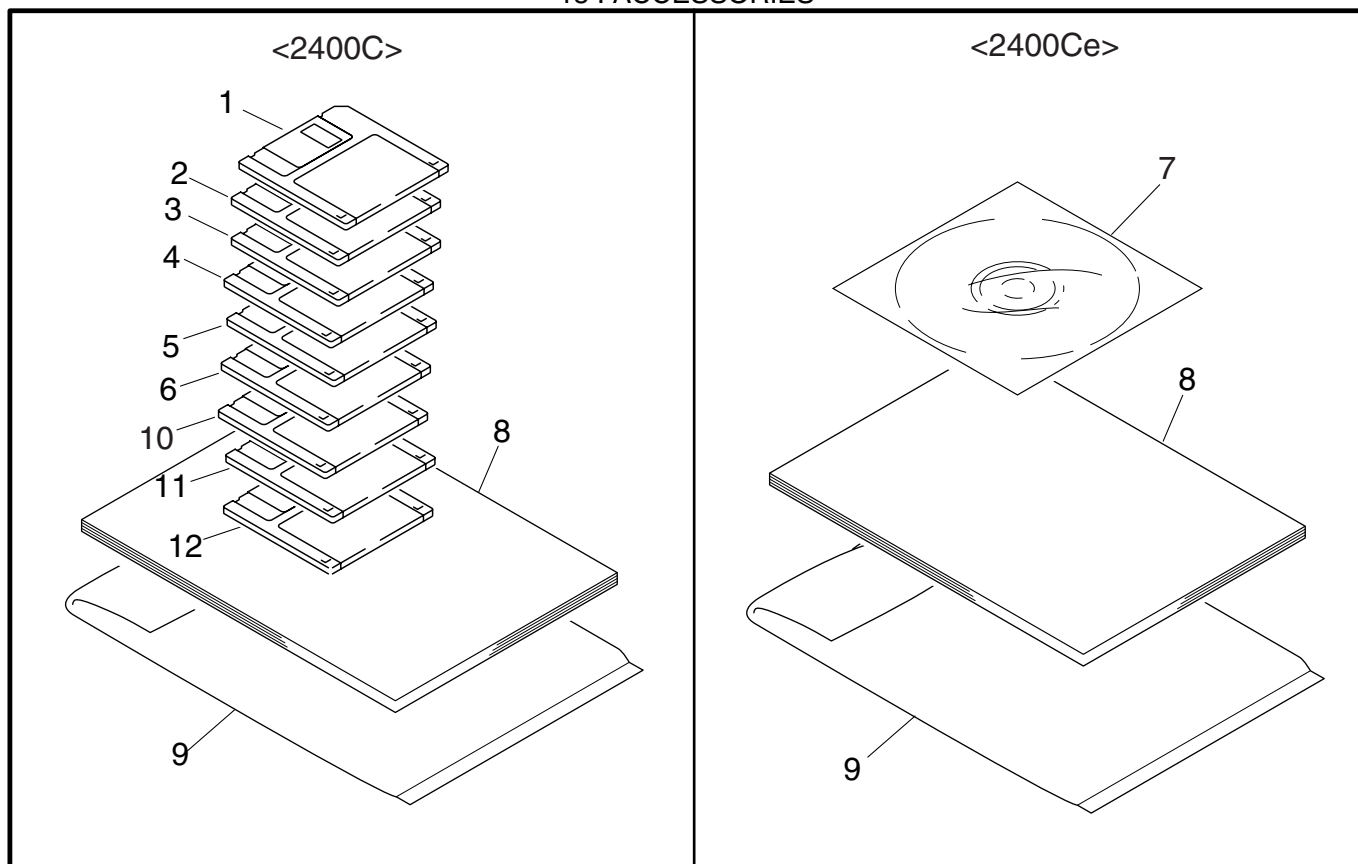
T/I NO. PR98002 / PR98195 / PR98275 / PR2000036 / PR2000123

14 . AC CORDS



MODEL HL-2400CHL-2400Ce 54S-301/302

15 . ACCESSORIES



T/I NO. PR98002 / PR2000036

MODEL HL-2400C/HL-2400Ce 54S-301/302

16. PACKING MATERIALS

PrPn020013

| REF.NO | CODE | Q'TY | DESCRIPTION | REMARK |
|--------|-----------|------|----------------------------|-----------|
| 1 | UH2151001 | 1 | BASE/UPPER PACKING SET | CODE CHNG |
| 2 | UH2172001 | 1 | POLYETHYLENE BAG (EN) | |
| 3 | UH1932001 | 1 | STARTER KIT PACKING SET | |
| 4 | LL0488001 | 1 | JOINT | |
| 5 | UH1935001 | 1 | HL-C1 CARTON (HL-2400C) | |
| 5 | LL0126001 | 1 | HL-CE CARTON (HL-2400Ce) | |
| 6 | LJ2331001 | 2 | PS3 LABEL (HL-2400Ce only) | |

MODEL HL-2400C/HL-2400Ce 54S-301/302 930

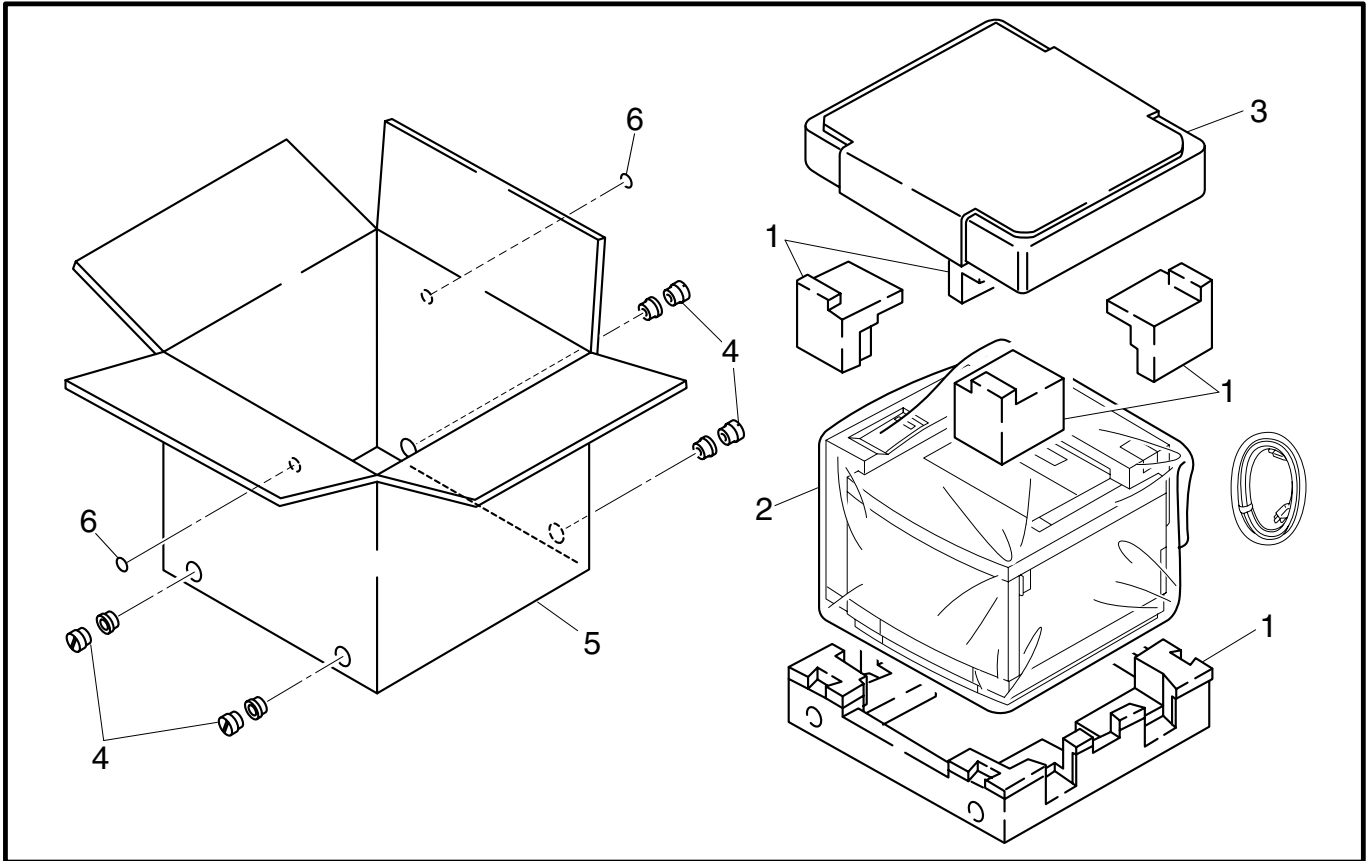
PCI NO. PrPn020013

17. PERIODICAL REPLACEMENT PARTS

| REF.NO | CODE | Q'TY | DESCRIPTION | REMARK |
|--------|-----------|------|--------------|--------|
| 1 | UH3508001 | 1 | 40K KIT (US) | |
| 1 | UH3509001 | 1 | 40K KIT (EC) | |
| 2 | UH3510001 | 1 | 120K KIT | |

MODEL HL-2400C/HL-2400Ce 54S-301/302

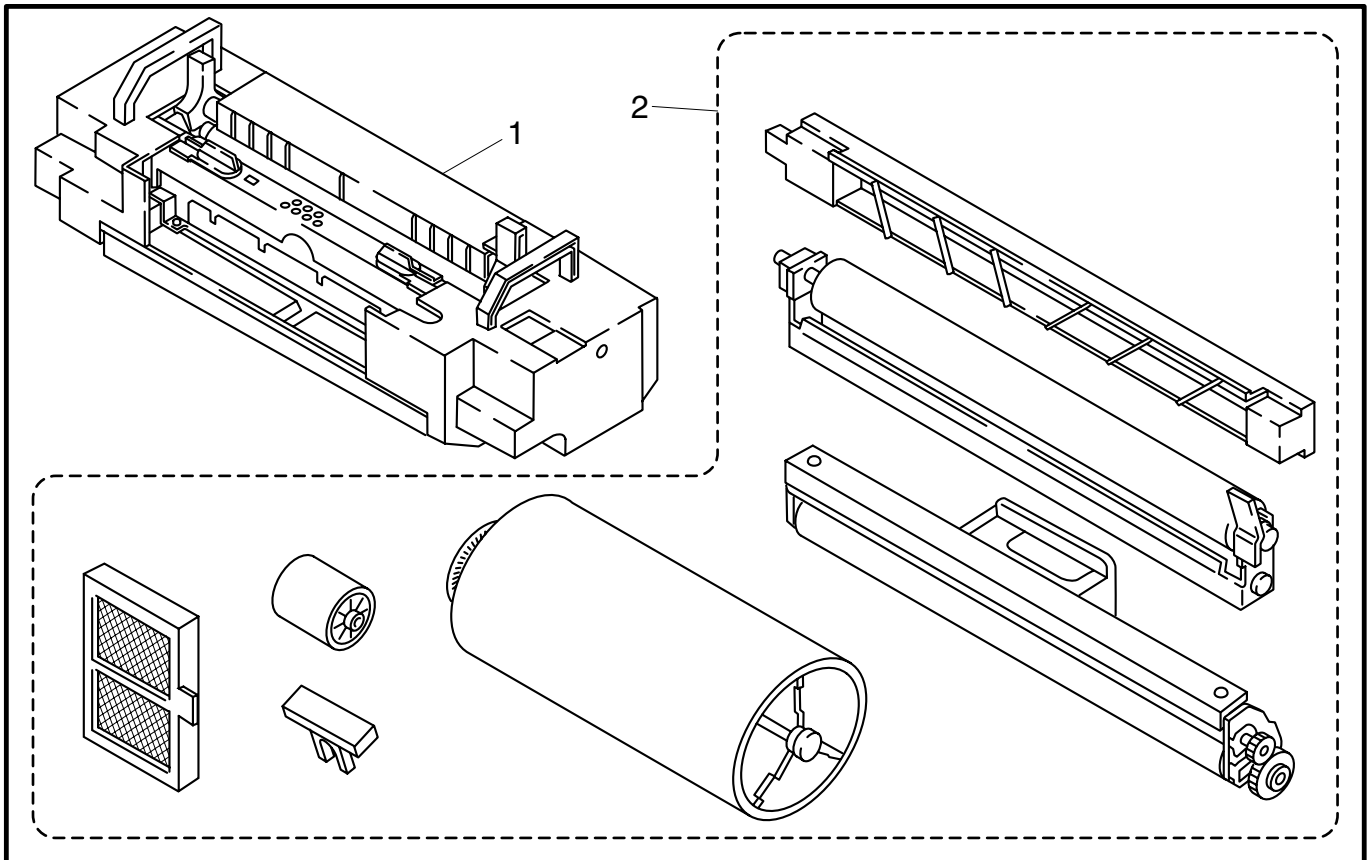
16 . PACKING MATERIALS



MODEL HL-2400C/HL2400Ce 54S-301/302

T/I NO. PR2000123

17 . PERIODICAL REPLACEMENT PARTS



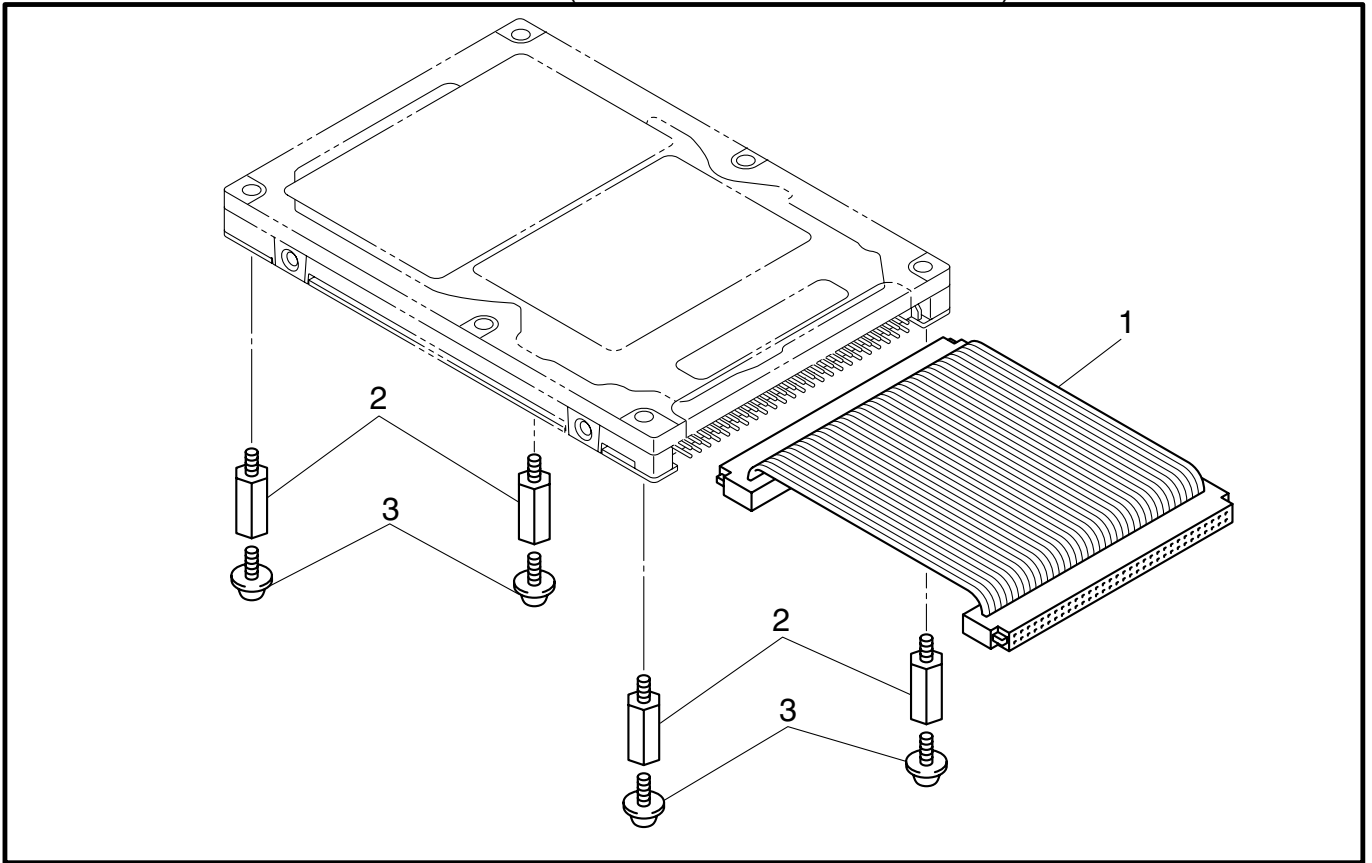
MODEL HL-2400C/HL-2400Ce 54S-301/302

18. HARD DISK (OPTION / FOR HL-2400Ce ONLY)

| REF.NO | CODE | Q'TY | DESCRIPTION | REMARK |
|--------|-----------|------|---------------------|--------|
| 1 | LJ2256001 | 1 | HDD CABLE | |
| 2 | LJ2257001 | 4 | SHOULDER SCREW | |
| 3 | 087320616 | 4 | TAPTITE, CUP S M3X6 | |

MODEL HD6G 54SX22

T/I NO. PR2000036



T/I NO. PrePR2000001

MODEL HD6G 54SX22