

# PARTS CATALOG

**FC100/108/120/128/270/290/  
298/500/520 PC140**

**Canon**

**Jan 13 2004**



## **PREFACE**

This Parts Catalog contains listings of parts used

Diagrams are provided with the listings to aid the service technician in identifying clearly, the item to be ordered.

Whenever ordering parts, consult this Parts Catalog for all of the information pertaining to each item. Be sure to include, in the Parts Request, the full item description, the item part number, and the quantity.

***COPYRIGHT (C) 1999 CANON INC.***

Use of this manual should be  
strictly supervised to avoid  
disclosure of confidential  
information.



# Contents

## Parts List Index

FC100/108/120/128/270/290/298/500/520 PC140 .....1-1

## FC100/108/120/128/270/290/298/500/520 PC140

A	ASSEMBLY LOCATION DIAGRAM .....	2-1
100	EXTERNAL COVERS, PANELS, ETC. (MULTI TYPE) .....	2-2
100A	EXTERNAL COVERS, PANELS, ETC. (SINGLE TYPE) .....	2-4
101	UPPER MAIN BODY .....	2-6
102	LOWER MAIN BODY (MULTI TYPE) .....	2-9
102A	LOWER MAIN BODY (SINGLE TYPE) .....	2-13
130	CONTROL PANEL ASSEMBLY (MULTI TYPE) .....	2-17
130A	CONTROL PANEL ASSEMBLY (SINGLE TYPE) .....	2-18
160	COPYBOARD COVER ASSEMBLY .....	2-19
240	COPYBOARD DRIVE ASSEMBLY .....	2-21
320	REGISTRATION ROLLER ASSEMBLY .....	2-22
340	PAPER PICK-UP ROLLER ASSEMBLY (MULTI TYPE) .....	2-24
370	DELIVERY COVER ASSEMBLY .....	2-25
810	FIXING ASSEMBLY .....	2-26
910	DC CONT. / DC POWER SUPPLY PCB ASSEMBLY .....	2-29
B	LIST OF CONNECTORS .....	2-32



# NUMERICAL INDEX

FC100/108/120/128/270/290/298/500/520 PC140

PARTS NUMBER	FIGURE & KEY NO.	PARTS NUMBER	FIGURE & KEY NO.	PARTS NUMBER	FIGURE & KEY NO
FA9-2568-000	102 - 1	FB2-9570-000	102 - 8	FB2-9696-000	101 - 21A
FA9-2568-000	102A - 1	FB2-9570-000	102A - 8	FB4-0027-000	160 - 2
FA9-2864-000	101 - 1	FB2-9572-000	102 - 9	FB4-0029-000	160 - 3
FB1-0624-000	102A - 2	FB2-9572-000	102A - 9	FB4-0030-000	160 - 4
FB1-0723-000	102 - 2	FB2-9574-000	102 - 10	FB4-0048-000	102 - 15
FB1-0723-000	102A - 3	FB2-9574-000	102A - 10	FB4-0048-000	102A - 14
FB1-7281-000	102 - 3	FB2-9575-000	102 - 11	FB4-0049-000	810 - 14
FB1-7283-000	102 - 22A	FB2-9575-000	102A - 11	FB4-0051-000	101 - 14A
FB1-7284-000	102 - 4	FB2-9589-000	102 - 12	FB4-0051-000	101 - 15A
FB1-7285-000	102 - 5	FB2-9590-000	102 - 22B	FB4-0053-000	320 - 10
FB1-7303-000	340 - 1	FB2-9594-000	320 - 5	FB4-0054-000	320 - 11
FB1-7305-000	340 - 2	FB2-9595-020	320 - 6	FB4-0055-000	102 - 16
FB1-7306-000	340 - 3	FB2-9596-020	320 - 7	FB4-0055-000	102A - 15
FB1-7307-000	340 - 4	FB2-9599-000	320 - 8	FB4-0246-000	102A - 16
FB1-7308-020	340 - 5	FB2-9600-000	320 - 9	FB4-0262-000	102A - 17
FB1-7316-000	320 - 1	FB2-9601-000	810 - 2	FB4-0325-000	100 - 2
FB1-7317-000	320 - 2	FB2-9603-000	810 - 3	FB4-0353-000	240 - 5
FB1-7319-000	320 - 3	FB2-9608-000	810 - 4	FB4-0357-000	810 - 15
FB1-7333-000	810 - 1	FB2-9610-000	810 - 5	FB4-0365-000	810 - 16
FB1-7344-000	320 - 4	FB2-9611-020	810 - 6	FB4-0370-000	370 - 2
FB1-7356-020	240 - 1	FB2-9612-000	810 - 7	FB4-0370-000	810 - 16
FB1-7380-000	101 - 13A	FB2-9613-020	810 - 8	FB4-0376-000	370 - 2
FB1-7381-000	101 - 2	FB2-9614-000	810 - 9	FB4-0376-000	810 - 16
FB1-7383-020	101 - 5	FB2-9616-000	810 - 10	FB9-0001-000	320 - 12
FB1-7390-000	101 - 3	FB2-9617-000	810 - 11	FC2-5845-000	370 - 2
FB1-7391-000	101 - 4	FB2-9622-020	102 - 13	FC2-5845-000	810 - 16
FB1-7403-000	100 - 1	FB2-9622-020	102A - 12	FC2-5847-000	100 - 18
FB1-7403-000	100A - 1	FB2-9625-000	810 - 12	FF2-7814-000	910 - 7
FB1-7424-020	910 - 1	FB2-9627-000	810 - 13	FF2-7829-000	102 - 17
FB1-7425-000	910 - 2	FB2-9639-000	240 - 2	FF2-7829-000	102A - 18
FB1-7427-000	910 - 3	FB2-9640-000	240 - 3	FF2-9928-000	102 - 18
FB1-7430-000	910 - 4	FB2-9641-000	102 - 14	FF2-9928-000	102A - 19
FB1-7431-000	910 - 5	FB2-9641-000	102A - 13	FF2-9932-000	910 - J101
FB1-7451-000	160 - 9A	FB2-9645-020	240 - 4	FF2-9933-000	910 - J102
FB1-7467-000	102 - 38A	FB2-9647-000	910 - 6	FF3-0150-000	102 - 19
FB1-7467-000	102A - 34A	FB2-9653-000	370 - 2	FF3-0150-000	102A - 20
FB1-8832-000	102A - 4	FB2-9653-000	810 - 16	FF3-2663-000	102 - 20
FB1-8833-020	102A - 5	FB2-9687-000	101 - 6	FF3-2663-000	102A - 21
FB1-8835-000	102A - 6	FB2-9688-000	101 - 7	FF3-2665-000	910 - J201
FB1-8861-000	101 - 5	FB2-9691-000	101 - 8	FF3-2666-000	910 - J201
FB1-9273-000	102 - 6	FB2-9692-000	101 - 9	FF3-2667-000	910 - JP2
FB1-9273-000	102A - 7	FB2-9693-000	101 - 10	FF3-2669-000	910 - JP1
FB1-9280-000	102 - 7	FB2-9694-000	101 - 11	FF3-2671-000	910 - J103
FB2-5016-000	370 - 1	FB2-9695-000	101 - 12	FF3-2673-000	910 - J104

# NUMERICAL INDEX

FC100/108/120/128/270/290/298/500/520 PC140

PARTS NUMBER	FIGURE & KEY NO.	PARTS NUMBER	FIGURE & KEY NO.	PARTS NUMBER	FIGURE & KEY NO
FF3-2677-000	910 - J108	FH2-6223-000	B - J601	FS5-2337-000	101 - 16
FF5-1644-040	102 - 21	FH2-6224-000	102A - 27	FS5-2347-000	240 - 7
FF5-1644-040	102A - 22	FH2-6224-000	B - J202	FS5-2349-000	320 - 13
FF5-1652-000	101 - 13	FH2-6224-000	B - J601	FS5-2351-000	320 - 14
FF5-3660-000	102 - 22	FH2-6427-000	102 - 44	FS5-2355-000	100 - 3
FF5-6421-000	810 - 17	FH2-6427-000	102A - 39	FS5-2355-000	100A - 2
FF5-6424-000	101 - 14	FH2-6488-000	102 - 28	FS5-2358-000	101 - 17
FF5-6425-000	101 - 15	FH2-6488-000	102A - 28	FS5-2359-000	101 - 18
FG5-4800-000	240 - 6	FH3-0638-000	910 - T107	FS5-2796-000	370 - 3
FG5-4808-000	102 - 23	FH3-0746-000	910 - T104	FS6-0337-000	810 - 19
FG5-4808-000	102A - 23	FH3-0749-000	910 - T101	FS6-0338-000	810 - 20
FG5-4809-000	810 - 18	FH3-0750-000	910 - T105	FS6-0339-000	810 - 21
FG5-4810-000	810 - 18	FH3-0751-000	910 - T102	FS6-0340-020	810 - 22
FG5-4811-000	810 - 18	FH3-0753-000	910 - T101	FS6-0344-000	240 - 8
FG5-4815-000	102 - 24	FH3-0755-000	910 - T105	FS6-0345-000	320 - 15
FG5-4815-000	102A - 24	FH3-0850-000	910 - T106	FS6-0347-000	320 - 16
FG5-9450-000	910 -	FH3-0851-000	910 - T106	FS6-0355-000	240 - 9
FG5-9451-000	910 -	FH3-0856-000	910 - T103	FS6-2163-000	810 - 23
FG5-9452-000	910 -	FH4-1303-000	910 - Q144	FS6-2164-000	810 - 24
FG5-9456-000	102 - 25	FH4-1304-000	910 - Q144	FS6-2168-000	101 - 19
FG5-9457-000	102 - 39	FH4-9156-000	910 - R271	FS6-2169-000	370 - 4
FG5-9457-000	102A - 35	FH4-9157-000	910 - R268	FS6-2728-000	240 - 10
FG5-9458-000	910 -	FH4-9195-000	910 - R285	HB1-5635-000	130 - 1
FG5-9500-000	910 -	FH4-9195-000	910 - R307	HB1-5636-000	102 - 35
FG5-9502-000	910 -	FH4-9196-000	910 - R274	HB1-5637-000	100 - 4
FG5-9504-000	102A - 25	FH7-6197-000	910 - RL101	HB1-5638-000	100 - 5
FG5-9534-040	240 -	FH7-9218-000	910 - L101	HB1-5639-000	130 - 2
FG5-9535-020	320 -	FH7-9219-000	910 - L102	HB1-5640-000	102 - 36
FG5-9536-000	810 -	FH7-9220-000	910 - L302	HB1-5641-000	130 - 3
FG5-9537-000	810 -	FH7-9238-000	910 - L302	HB1-5642-000	130 - 4
FG5-9538-000	810 -	FH9-0490-000	910 - L302	HB1-5643-000	130 - 5
FG5-9539-000	810 -	FH9-0491-000	910 - L101	HB1-5644-000	160 - 7
FG5-9609-000	340 -	FH9-0492-000	102 - 29	HB1-5645-000	100 - 6
FG5-9614-000	810 -	FH9-0535-000	102A - 25A	HB1-5645-000	100 - 7
FG5-9619-000	810 -	FH9-0536-000	102A - 25B	HB1-5645-000	100A - 3
FG6-7161-000	102 - 25	FN1-4327-000	160 - 5	HB1-5646-000	100 - 8
FG6-7176-000	102A - 25	FS1-9102-000	102A - 29	HB1-5647-000	100 - 8
FH2-5274-000	102 - 26	FS5-0436-000	102 - 30	HB1-5648-000	100 - 9
FH2-5274-000	102A - 26	FS5-0437-000	102 - 31	HB1-5648-000	100A - 4
FH2-5276-000	102 - 45	FS5-0464-000	102A - 30	HB1-5649-000	130 - 6
FH2-5288-000	102 - 47	FS5-0465-000	102A - 31	HB1-5649-000	130A - 1
FH2-5288-000	102A - 41	FS5-2332-000	102 - 32	HB1-5655-000	100 - 10
FH2-6223-000	102 - 27	FS5-2333-000	102 - 33	HB1-5655-000	100A - 5
FH2-6223-000	B - J202	FS5-2334-000	102 - 34	HB1-5656-000	100 - 11



# NUMERICAL INDEX

FC100/108/120/128/270/290/298/500/520 PC140

PARTS NUMBER	FIGURE & KEY NO.	PARTS NUMBER	FIGURE & KEY NO.	PARTS NUMBER	FIGURE & KEY NO
HB1-5656-000	100A - 6	HF5-0675-000	160 - 9	NPN	B -
HB1-5658-000	102 - 37	HF5-0676-000	160 - 9	NPN	B - J901
HB1-5658-000	102A - 32	HF5-0677-000	102 - 38	NPN	B - J902
HB1-5660-000	160 - 6	HF5-0677-000	102A - 34	NPN	B - J903
HB1-5661-000	101 - 20	HF5-0678-000	101 - 21	NPN	B - J908
HB1-5662-000	101 - 20	HF5-0679-000	102 - 38	PCB	B - J202
HB1-5663-000	100 - 17	HF5-0679-000	102A - 34	PCB	B - J601
HB1-5665-000	130 - 7	HF5-0680-000	160 - 9	PCB	B - J603
HB1-5669-000	130A - 2	HF5-0681-000	101 - 21	PCB	B - J621
HB1-5670-000	130A - 3	HF5-0684-000	101 - 21	PCB	B - J801
HB1-5671-000	130A - 4	HF5-0685-000	101 - 21	PCB	B - J901
HB1-5674-000	102A - 33	HG5-3152-000	160 - 1	PCB	B - J902
HB1-5675-000	102A - 33	HG5-3153-000	160 - 1	PCB	B - J903
HB1-5676-000	100A - 11	HG5-3154-000	370 -	PCB	B - J904
HB1-5678-000	100A - 7	HG5-3155-000	130 -	PCB	B - J904
HB1-5679-000	100A - 8	HG5-3160-000	100 - 15	PCB	B - J905
HB1-5680-000	100A - 9	HG5-3161-000	100 - 15	PCB	B - J905
HB1-5690-000	130 - 6	HG5-3164-000	101 - 22	PCB	B - J906
HB1-5690-000	130A - 1	HG5-3167-000	101 - 22	PCB	B - J906
HB1-5691-000	130A - 3	HG5-3169-000	100 - 15	PCB	B - J908
HB1-5693-000	102A - 33	HG5-3170-000	100 - 15	PCB	B - J909
HB1-5701-000	160 - 7	HG5-3175-000	100 - 15	RB1-3087-000	810 - 25
HB1-5702-000	160 - 7	HG5-3176-000	100 - 15	RB1-3090-000	810 - 26
HB1-5703-000	100 - 12	HG5-3177-000	130 -	RH2-5015-000	102 - 46
HB1-5704-000	100 - 13	HG5-3179-000	370 -	RH2-5015-000	102A - 40
HB1-5705-000	100 - 14	HG5-3180-000	160 - 1	RH2-5336-000	810 - 27
HB1-5706-000	370 - 5	HG5-3187-000	130A -	RH2-5336-000	B - J907
HB1-5707-000	100 - 16	HG5-3189-000	100A - 10	RH6-3434-000	910 - SQ101
HB1-5708-000	160 - 8	HG5-3190-000	100A - 10	RS5-2223-000	810 - 28
HB1-5709-000	160 - 8	HG5-3191-000	101 - 22	VD7-0042-501	910 - FU101
HB1-5724-000	102 - 37	HG5-3193-000	101 - 22	VD7-0211-002	910 - FU102
HB1-5724-000	102A - 32	HG5-3197-000	100A - 10	VD7-0641-601	910 - FU101
HB1-5725-000	101 - 20	HG5-3198-000	130A -	VD7-0645-001	910 - FU102
HB1-5726-000	160 - 8	HG5-3200-000	100A - 10	VS1-0842-003	B - J801
HB1-5729-000	130 - 1	HG5-3254-000	101 - 23	VS1-0842-004	B - J621
HB1-5733-000	160 - 6	HG5-3255-000	102 - 39A	VS1-0842-005	B - J603
HB1-5735-000	160 - 7	HG5-3255-000	102A - 35A	VS3-0198-003	B - J907
HB1-5736-000	160 - 7	HG5-3256-000	101 - 23	VS3-5093-001	B - J909
HB1-5737-000	100 - 10	NPN	100 -	WC8-5058-000	102 - 40
HB1-5737-000	100A - 5	NPN	100A -	WC8-5058-000	102A - 36
HB1-5738-000	100 - 11	NPN	101 -	WG3-0055-000	101 - 24
HB1-5738-000	100A - 6	NPN	102 -	WG3-0055-000	101 - 25
HB1-5739-000	101 - 20	NPN	102A -	WG8-0280-000	102 - 23A
HF5-0674-000	160 - 9	NPN	160 -	WG8-0280-000	102 - 39B

NUMERICAL INDEX

FC100/108/120/128/270/290/298/500/520 PC140

PARTS NUMBER	FIGURE & KEY NO.	PARTS NUMBER	FIGURE & KEY NO.	PARTS NUMBER	FIGURE & KEY NO
WG8-0280-000	102A - 23A				
WG8-0280-000	102A - 35B				
WS3-5225-000	B - J909				
WT3-5021-000	102 - 41				
XA9-0233-000	810 - 29				
XA9-0762-000	160 - 10				
XA9-0767-000	102 - 42				
XA9-0767-000	102A - 37				
XA9-0938-000	102 - 43				
XA9-0938-000	102A - 38				
XB1-2300-409	240 - 501				
XB1-2300-409	810 - 501				
XB2-7300-607	102 - 501				
XB2-7300-607	102A - 501				
XB4-7260-609	102 - 502				
XB4-7300-509	101 - 501				
XB4-7300-509	102 - 503				
XB4-7300-509	102A - 502				
XB4-7300-809	102 - 504				
XB4-7300-809	102A - 503				
XB4-7400-805	102 - 505				
XB4-7400-805	102 - 506				
XB4-7400-805	102A - 504				
XB4-7400-805	102A - 505				
XB4-7401-009	102 - 507				
XB4-7401-009	102 - 508				
XB4-7401-009	102A - 506				
XB4-7401-009	102A - 507				
XB4-7401-209	100 - 501				
XB4-7401-209	100A - 501				
XB6-7300-409	102 - 509				
XB6-7300-409	102A - 508				
XB6-7300-409	240 - 502				
XD1-1104-132	320 - 501				
XD1-1106-239	810 - 502				
XD2-1100-322	810 - 503				
XD2-1100-502	810 - 504				
XD3-2160-062	320 - 502				
XD3-2160-162	320 - 503				

# **FC100/108/120/128/270/290/298/500/520**

## **PC140**

100V 50/60Hz	H12-2721-000LUW00001-
100V 50/60Hz	H12-2723-000LVB00001-
100V 50/60Hz	H12-2731-000LUX00001-
220V 50Hz	H12-2736-000RUG00001-
230V 50Hz	H12-2739-000MTH00001-
230V 50Hz	H12-2747-000UVM00001-
230V 50Hz	H12-2748-000QTR00001-
230V 50Hz	H12-2749-000TTL00001-
100V 50/60Hz	H12-2751-000LUY00001-
220V 50Hz	H12-2755-000RUL00001-
230V 50Hz	H12-2756-000RUJ00001-
100V 50/60Hz	H12-2758-000LVC00001-
230V 50Hz	H12-2767-000UVN00001-
230V 50Hz	H12-2768-000QTQ00001-
230V 50Hz	H12-2769-000TTM00001-
120V 60Hz	H12-2772-000TVL00001-
230V 50Hz	H12-2773-000UVL00001-
220V 50Hz	H12-2775-000RUK00001-
220V 50Hz	H12-2776-000RUH00001-
120V 60Hz	H12-2777-000NVY00001-
230V 50Hz	H12-2778-000MTK00001-
230V 50Hz	H12-2779-000MTJ00001-
220V 50Hz	H12-2926-000MUC00001-
220V 50Hz	H12-2936-000MUB00001-
	H12-3940-000



# Contents

A	ASSEMBLY LOCATION DIAGRAM .....	2-1
100	EXTERNAL COVERS, PANELS, ETC. (MULTI TYPE).....	2-2
100A	EXTERNAL COVERS, PANELS, ETC. (SINGLE TYPE).....	2-4
101	UPPER MAIN BODY .....	2-6
102	LOWER MAIN BODY (MULTI TYPE).....	2-9
102A	LOWER MAIN BODY (SINGLE TYPE).....	2-13
130	CONTROL PANEL ASSEMBLY (MULTI TYPE).....	2-17
130A	CONTROL PANEL ASSEMBLY (SINGLE TYPE) .....	2-18
160	COPYBOARD COVER ASSEMBLY .....	2-19
240	COPYBOARD DRIVE ASSEMBLY.....	2-21
320	REGISTRATION ROLLER ASSEMBLY .....	2-22
340	PAPER PICK-UP ROLLER ASSEMBLY (MULTI TYPE).....	2-24
370	DELIVERY COVER ASSEMBLY .....	2-25
810	FIXING ASSEMBLY.....	2-26
910	DC CONT. / DC POWER SUPPLY PCB ASSEMBLY .....	2-29
B	LIST OF CONNECTORS.....	2-32



FIGURE A  
ASSEMBLY LOCATION DIAGRAM

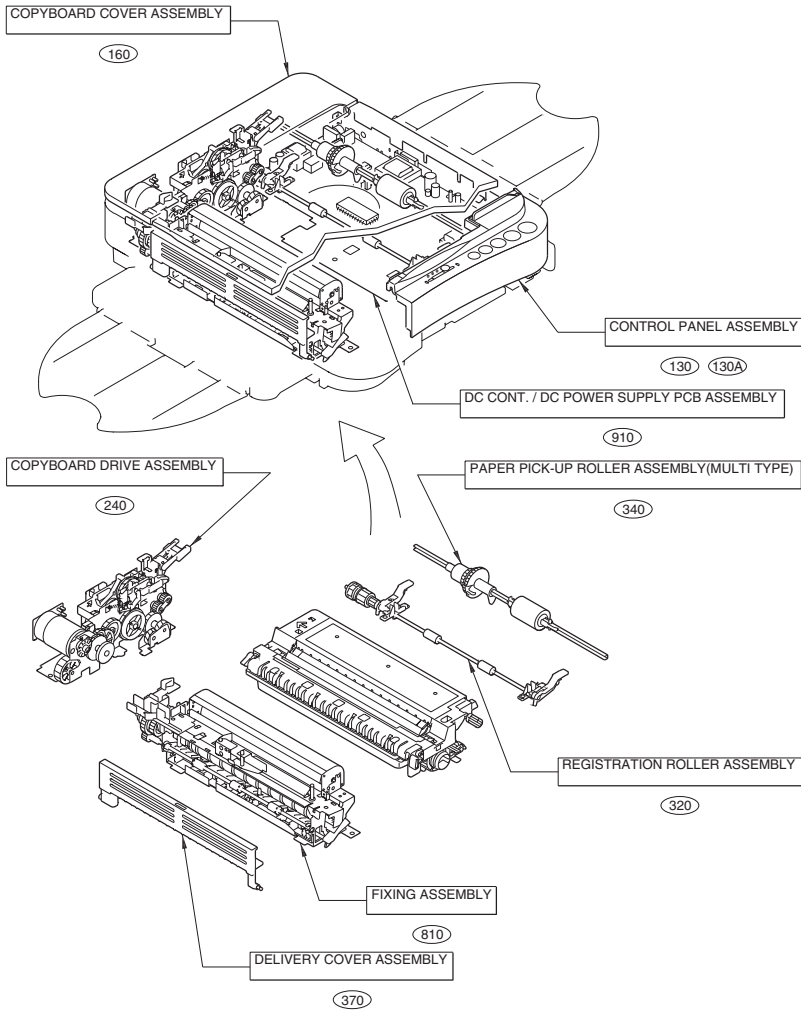


FIGURE 100  
EXTERNAL COVERS, PANELS, ETC. (MULTI TYPE)

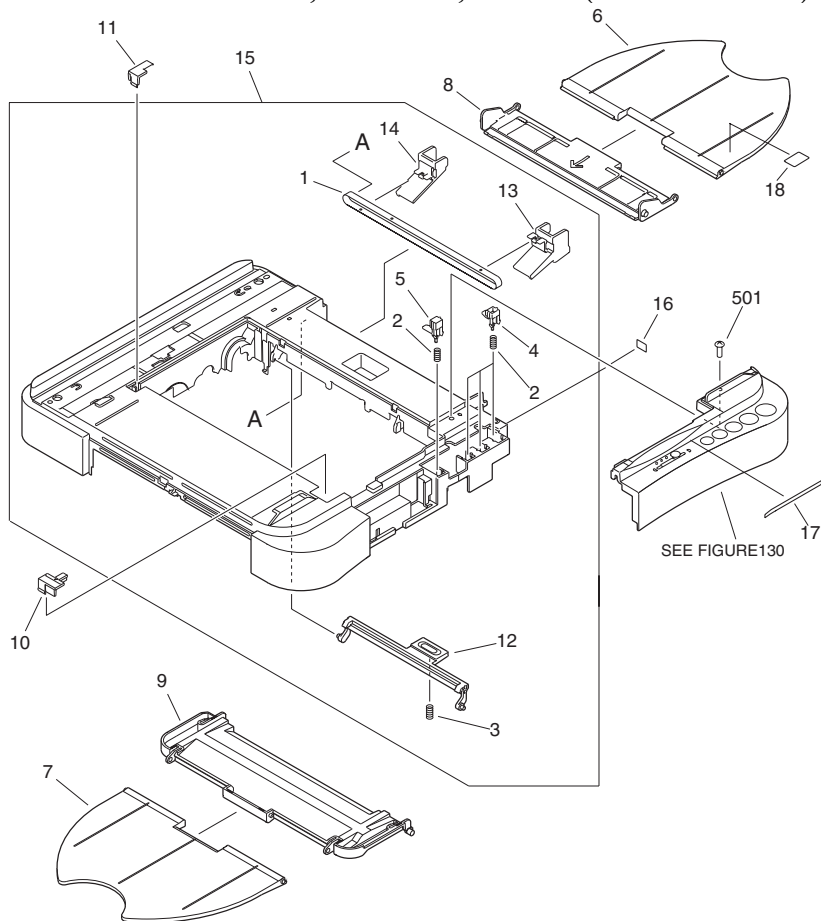


FIGURE & KEY NO.	PARTS NUMBER	R A N K	Q'TY	DESCRIPTION	SERIAL NUMBER/ REMARKS	S V C
Fig.100	NPN		RF	EXTERNAL COVERS, PANELS, ETC.	MULTI TYPE	
1	FB1-7403-000		1	FILM, SLIDE		
2	FB4-0325-000		4	SPRING, COMPRESSION		
3	FS5-2355-000		1	SPRING, COMPRESSION		
4	HB1-5637-000		3	ACTUATOR, KEY, 1		
5	HB1-5638-000		1	ACTUATOR, KEY, 2		
6	HB1-5645-000		1	TRAY, SUB		



FIGURE & KEY NO.	PARTS NUMBER	R A N K	Q'TY	DESCRIPTION	SERIAL NUMBER/ REMARKS	S V C
7	HB1-5645-000		1	TRAY, SUB		
8	HB1-5647-000		1	TRAY,MANUAL PAPER FEED	FC120,FC128,FC270,FC290,FC298,PC140	
8	HB1-5646-000		1	TRAY,MANUAL PAPER FEED	FC520 100V	
9	HB1-5648-000		1	TRAY, PAPER DELIVERY		
10	HB1-5655-000		1	PLATE, BLANKING, FRONT	FC290,FC298,FC520,PC140	
10	HB1-5737-000		1	PLATE, BLANKING, FRONT	FC120,FC128	
11	HB1-5656-000		1	PLATE, BLANKING, REAR	FC290,FC298,FC520,PC140	
11	HB1-5738-000		1	PLATE, BLANKING, REAR	FC120,FC128	
12	HB1-5703-000		1	HOOK		
13	HB1-5704-000		1	GUIDE, MANUAL PAPER FEED, F		
14	HB1-5705-000		1	GUIDE, MANUAL PAPER FEED, R		
15	HG5-3160-000		1	UPPER COVER UNIT	FC520 100V	
15	HG5-3161-000		1	UPPER COVER UNIT	FC290	
15	HG5-3169-000		1	UPPER COVER UNIT	FC298	
15	HG5-3170-000		1	UPPER COVER UNIT	PC140	
15	HG5-3175-000		1	UPPER COVER UNIT	FC120	
15	HG5-3176-000		1	UPPER COVER UNIT	FC128	
16	HB1-5707-000		1	LABEL,'DENSITY ADJUSTMENT	FC520 100V	
17	HB1-5663-000		1	LABEL,CONTROL PANEL	FC520 100V	
18	FC2-5847-000		1	LABEL,CLIP	FC290,FC298 KOR	
501	XB4-7401-209		1	SCREW,TAPPING,TRUSS HEAD,M4X12		

FIGURE 100A  
EXTERNAL COVERS, PANELS, ETC. (SINGLE TYPE)

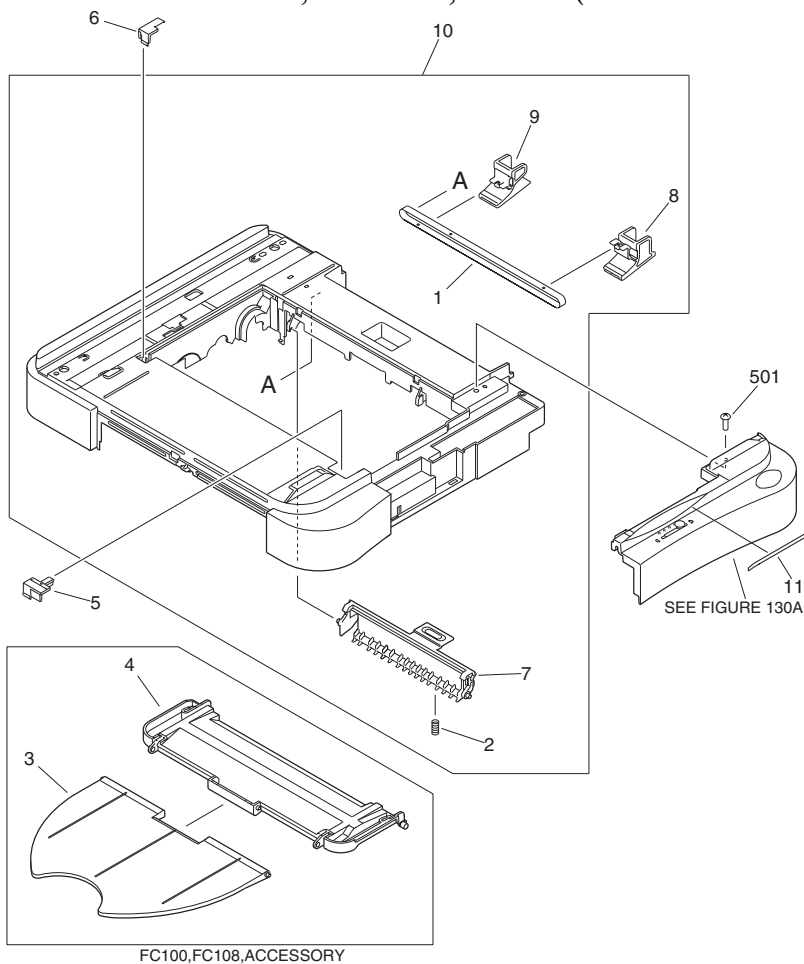


FIGURE & KEY NO.	PARTS NUMBER	R A N K	Q'TY	DESCRIPTION	SERIAL NUMBER/ REMARKS	S V C
Fig.100A	NPN		RF	EXTERNAL COVERS, PANELS, ETC.	SINGLE TYPE	
1	FB1-7403-000		1	FILM, SLIDE		
2	FS5-2355-000		1	SPRING, COMPRESSION		
3	HB1-5645-000		1	TRAY, SUB	FC100,FC108,ACCESSO RY	

FIGURE & KEY NO.	PARTS NUMBER	R A N K	Q'TY	DESCRIPTION	SERIAL NUMBER/ REMARKS	S V C
4	HB1-5648-000		1	TRAY, PAPER DELIVERY	FC100,FC108,ACCESSORY	
5	HB1-5655-000		1	PLATE, BLANKING, FRONT	FC270,FC500	
5	HB1-5737-000		1	PLATE, BLANKING, FRONT	FC100,FC108	
6	HB1-5656-000		1	PLATE, BLANKING, REAR	FC270,FC500	
6	HB1-5738-000		1	PLATE, BLANKING, REAR	FC100,FC108	
7	HB1-5678-000		1	HOOK		
8	HB1-5679-000		1	GUIDE, MANUAL PAPER FEED,F		
9	HB1-5680-000		1	GUIDE, MANUAL PAPER FEED,R		
10	HG5-3190-000		1	UPPER COVER UNIT	FC270	
10	HG5-3189-000		1	UPPER COVER UNIT	FC500 100V	
10	HG5-3197-000		1	UPPER COVER UNIT	FC100	
10	HG5-3200-000		1	UPPER COVER UNIT	FC108	
11	HB1-5676-000		1	LABEL,CONTROL PANEL	FC500 100V	
501	XB4-7401-209		1	SCREW,TAPPING,TRUSS HEAD,M4X12		

FIGURE 101  
UPPER MAIN BODY

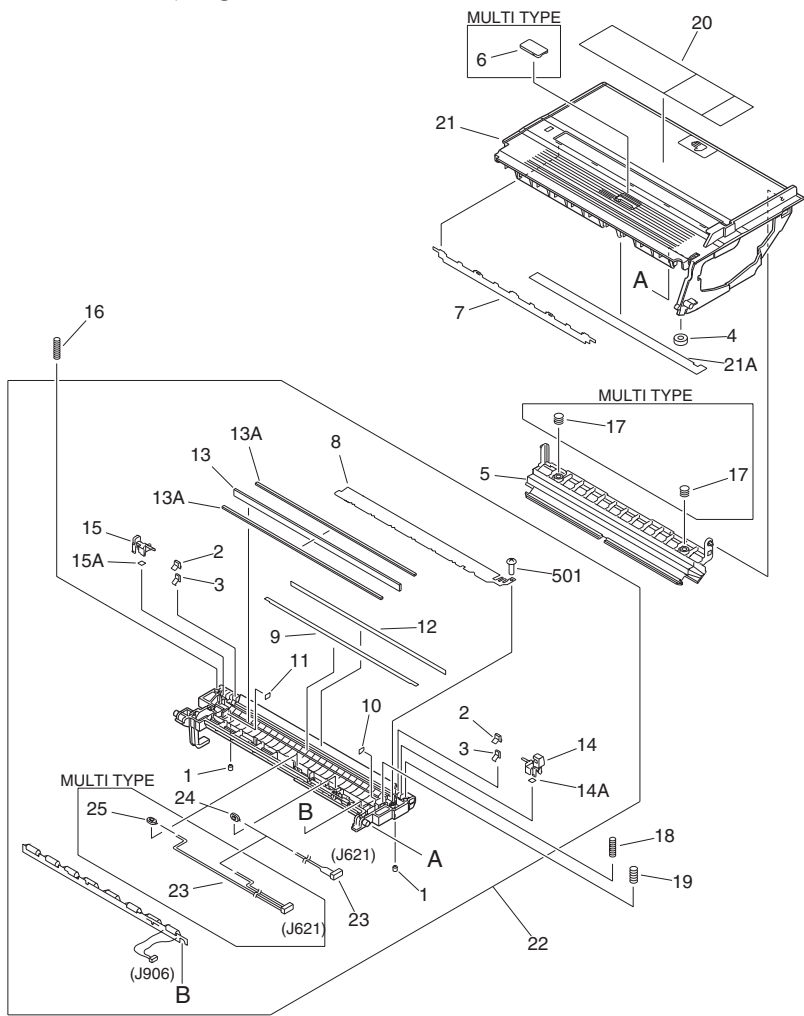


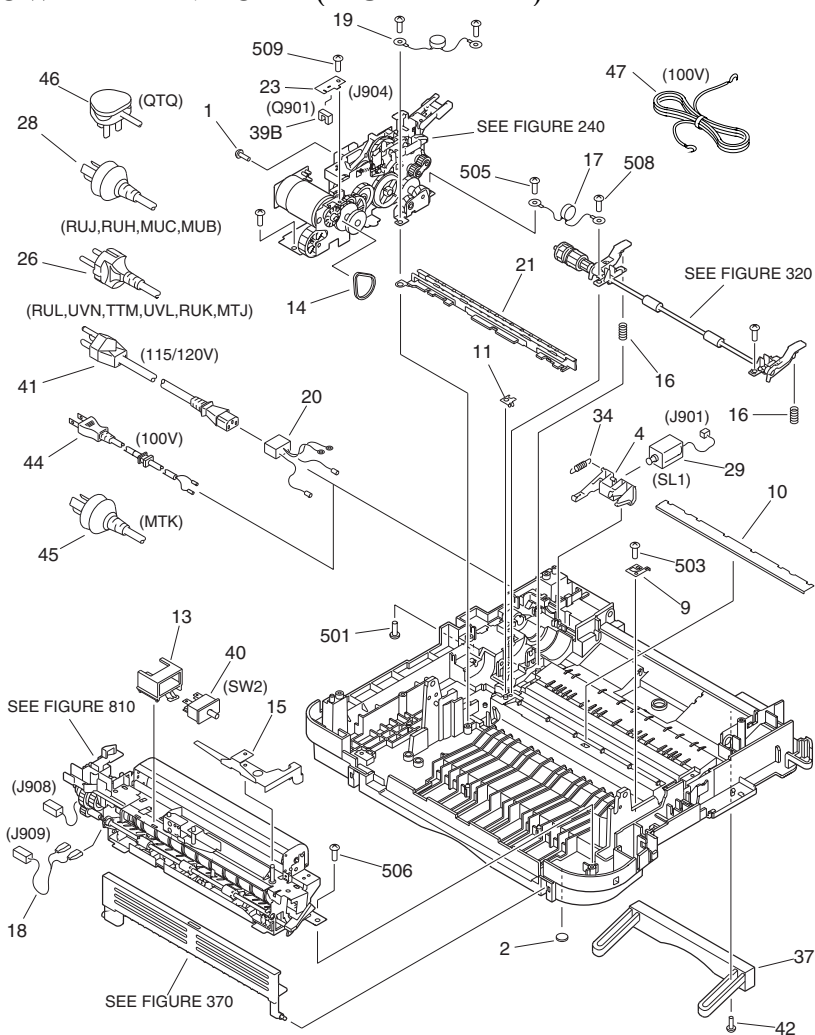
FIGURE & KEY NO.	PARTS NUMBER	R A N K	Q'TY	DESCRIPTION	SERIAL NUMBER/ REMARKS	S V C
Fig.101	NPN		RF	UPPER MAIN BODY		
1	FA9-2864-000		2	SET SCREW,M3X4		
2	FB1-7381-000		2	PLATE, RETAINER		
3	FB1-7390-000		2	PLATE, RETAINER		

FIGURE & KEY NO.	PARTS NUMBER	R A N K	Q'TY	DESCRIPTION	SERIAL NUMBER/ REMARKS	S V C
4	FB1-7391-000		1	RING, OPEN/CLOSE BRAKE		
5	FB1-8861-000		1	GUIDE, PAPER PICK-UP, UPPER	SINGLE TYPE	
5	FB1-7383-020		1	GUIDE, PAPER PICK-UP, UPPER	MULTI TYPE	
6	FB2-9687-000		1	PLATE, AE WINDOW	MULTI TYPE	
7	FB2-9688-000		1	PLATE, SCANNER COVER		
8	FB2-9691-000		1	SHEET, ANTI-REFLECTIVE, 1		
9	FB2-9692-000		1	SHEET, ANTI-REFLECTIVE, 2		
10	FB2-9693-000		1	SHEET, ANTI-REFLECTIVE, FRONT		
11	FB2-9694-000		1	SHEET, ANTI-REFLECTIVE, REAR		
12	FB2-9695-000		1	SHEET, ANTI-REFLECTIVE, RIGHT		
13	FF5-1652-000		1	OPTICAL FIBER LENS ARRAY		
13A	FB1-7380-000		2	SEAL, LIGHT SHIELD		
14	FF5-6424-000		1	BLOCK, FRONT SPACER		
14A	FB4-0051-000		1	SHEET, SHARP CUT		
15	FF5-6425-000		1	BLOCK, REAR SPACER		
15A	FB4-0051-000		1	SHEET, SHARP CUT		
16	FS5-2337-000		1	SPRING, COMPRESSION		
17	FS5-2358-000		2	SPRING, COMPRESSION	MULTI TYPE	
18	FS5-2359-000		1	SPRING, COMPRESSION		
19	FS6-2168-000		1	SPRING, COMPRESSION		
20	HB1-5661-000		1	LABEL, JAM	EXCEPT CHN,KOR	
20	HB1-5662-000		1	LABEL, JAM	CHN,KOR	
20	HB1-5725-000		1	LABEL, JAM	FC108,FC128	
20	HB1-5739-000		1	LABEL, JAM	FC100,FC120	
21	HF5-0684-000		1	COVER, UPPER BODY	FC270,FC500	
21	HF5-0685-000		1	COVER, UPPER BODY	FC100,FC108	
21	HF5-0678-000		1	COVER, UPPER BODY	FC290,FC298,FC520	
21	HF5-0681-000		1	COVER, UPPER BODY	FC120,FC128	
21A	FB2-9696-000		1	SHEET, ANTI-REFLECTIVE, UPPER		
22	HG5-3191-000		1	UPPER MAIN BODY SUB UNIT	FC100,FC108,FC270	
22	HG5-3193-000		1	UPPER MAIN BODY SUB UNIT	FC500 100V	
22	HG5-3164-000		1	UPPER MAIN BODY SUB UNIT	FC120,FC128,FC290,FC298,PC140	

FIGURE & KEY NO.	PARTS NUMBER	R A N K	Q'TY	DESCRIPTION	SERIAL NUMBER/ REMARKS	S V C
22	HG5-3167-000		1	UPPER MAIN BODY SUB UNIT	FC520 100V	
23	HG5-3254-000		1	CABLE, AE SENSOR	SINGLE TYPE	
23	HG5-3256-000		1	CABLE, AE SENSOR	MULTI TYPE	
24	WG3-0055-000		1	PHOTO-DIODE, BS520		
25	WG3-0055-000		1	PHOTO-DIODE, BS520	MULTI TYPE	
501	XB4-7300-509		1	SCREW,TAPPING,TRUSS HEAD,M3X5		

# FIGURE 102

## LOWER MAIN BODY (MULTI TYPE)



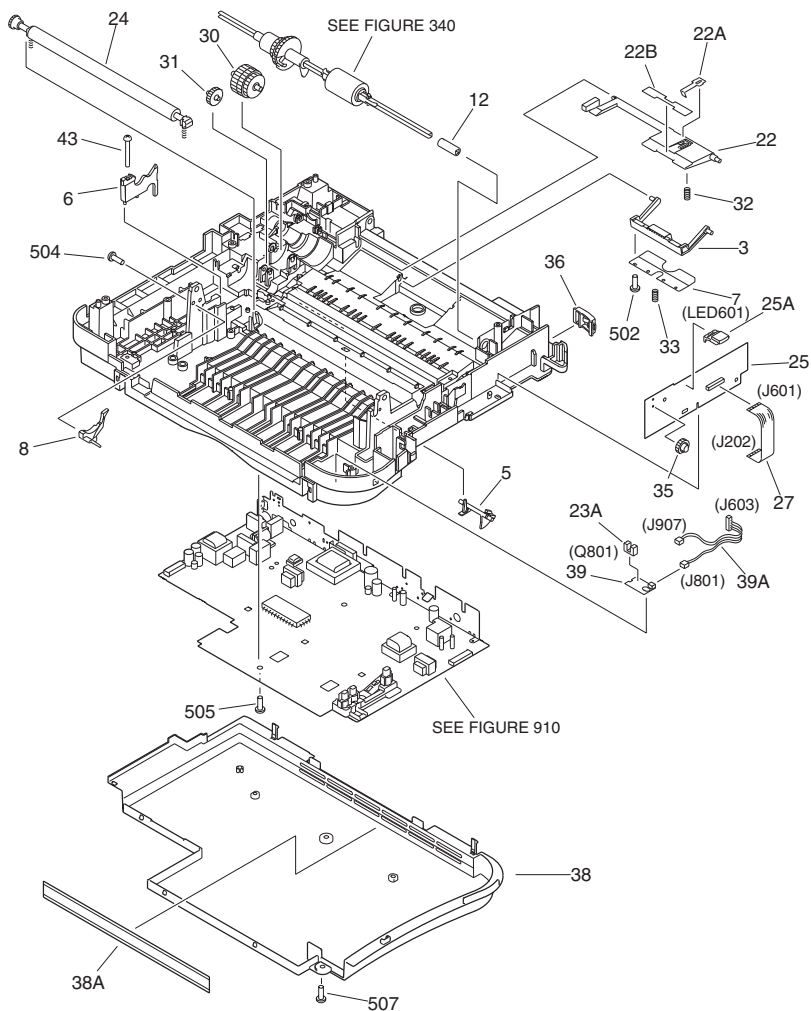


FIGURE & KEY NO.	PARTS NUMBER	R A N K	Q'TY	DESCRIPTION	SERIAL NUMBER/ REMARKS	S V C
Fig.102	NPN		RF	LOWER MAIN BODY	MULTI TYPE	
1	FA9-2568-000		1	SCREW,MACH.,TRUSS HEAD		
2	FB1-0723-000		2	PAD, RUBBER		
3	FB1-7281-000		1	ARM, SEPARATION		
4	FB1-7284-000		1	ARM, SOLENOID		

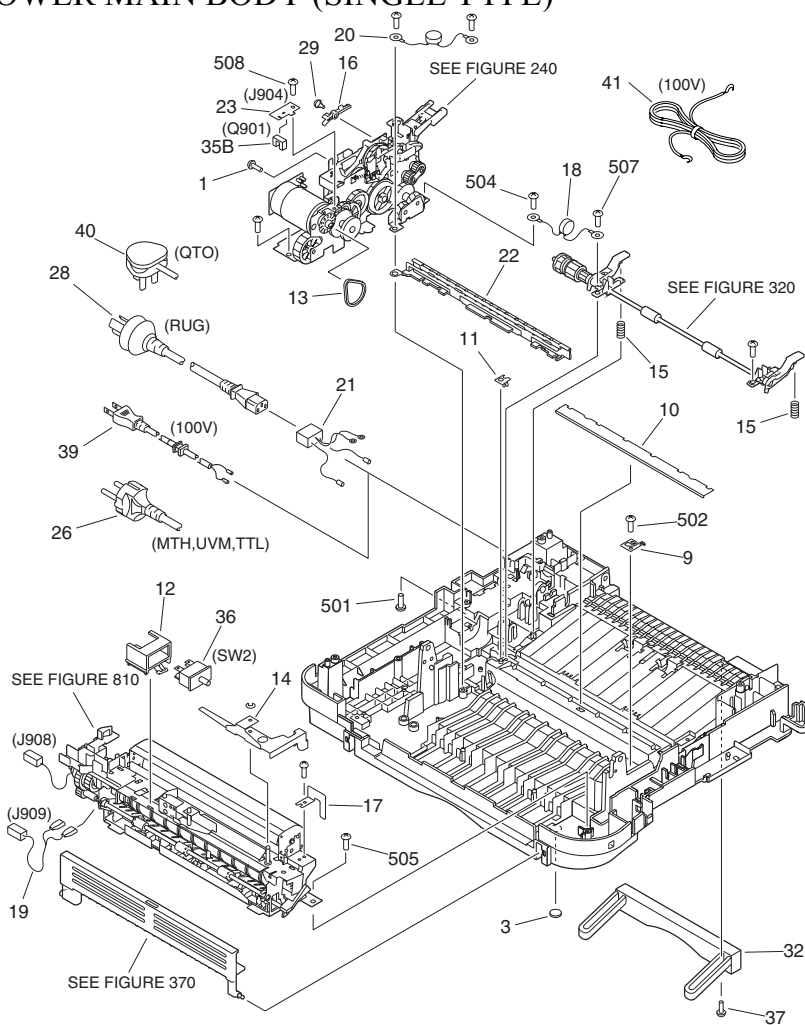


FIGURE & KEY NO.	PARTS NUMBER	R A N K	Q'TY	DESCRIPTION	SERIAL NUMBER/ REMARKS	S V C
5	FB1-7285-000		1	ARM, PAPER PICK-UP SENSOR		
6	FB1-9273-000		1	MOUNT, CARTRIDGE, REAR		
7	FB1-9280-000		1	PLATE, SEPARATION ARM		
8	FB2-9570-000		1	BLOCK, SHUTTER		
9	FB2-9572-000		1	PLATE, TRANSFER TERMINAL		
10	FB2-9574-000		1	GUIDE, TRANSFER, LOWER		
11	FB2-9575-000		1	PLATE, CONTINUITY		
12	FB2-9589-000		1	BUSHING		
13	FB2-9622-020		1	HOLDER, DOOR SWITCH		
14	FB2-9641-000		1	BELT, FAN		
15	FB4-0048-000		1	PLATE, DOOR SWITCH LINK, 2		
16	FB4-0055-000		2	SPRING, COMPRESSION		
17	FF2-7829-000		1	VARISTOR		
18	FF2-9928-000		1	CABLE, HEATER CONNECTOR	J909	
19	FF3-0150-000		1	VARISTOR		
20	FF3-2663-000		1	INLET,AC	EXCEPT 100V	
21	FF5-1644-040		1	STATIC CHARGE ELIMINATOR		
22	FF5-3660-000		1	ARM, LIFTER		
22A	FB1-7283-000		1	SPRING, LEAF		
22B	FB2-9590-000		1	SHEET, GUIDE		
23	FG5-4808-000		1	MOTOR DRIVE SENSOR PCB ASSY	J904	
23A	WG8-0280-000		1	PHOTO-INTERRUPTER	Q901	
24	FG5-4815-000		1	TRANSFER ROLLER UNIT		
25	FG6-7161-000		1	CONTROL PANEL PCB UNIT	EXCEPT 100V	
25	FG5-9456-000		1	CONTROL PANEL PCB UNIT	FC520 100V	
26	FH2-5274-000		1	CORD, POWER SUPPLY	AMS,KOR,RUSSIA,GENE RAL	
27	FH2-6223-000		1	CABLE, FLAT	J202,601	
28	FH2-6488-000		1	CORD, POWER	CHN	
29	FH9-0492-000		1	SOLENOID, DC24V	SL1 J901	
30	FS5-0436-000		1	GEAR, 29T/34T/38T		
31	FS5-0437-000		1	GEAR, 22T		
32	FS5-2332-000		1	SPRING, COMPRESSION		

FIGURE & KEY NO.	PARTS NUMBER	R A N K	Q'TY	DESCRIPTION	SERIAL NUMBER/ REMARKS	S V C
33	FS5-2333-000		1	SPRING, COMPRESSION		
34	FS5-2334-000		1	SPRING, TENSION		
35	HB1-5636-000		1	GEAR, 18T		
36	HB1-5640-000		1	KEY TOP, AE SWITCHING		
37	HB1-5658-000		1	GRIP	EXCEPT FC120,FC128	
37	HB1-5724-000		1	GRIP	FC120,FC128	
38	HF5-0677-000		1	COVER, PCB UNIT	EXCEPT FC120,FC128	
38	HF5-0679-000		1	COVER, PCB UNIT	FC120,FC128	
38A	FB1-7467-000		1	SHEET, MESH		
39	FG5-9457-000		1	DELIVERY SENSOR PCB ASS'Y		
39A	HG5-3255-000		1	CABLE, DELIVERY THERMISTOR	J603,801,907	
39B	WG8-0280-000		1	PHOTO-INTERRUPTER	Q801	
40	WC8-5058-000		1	MICROSWITCH, DOOR	SW2	
41	WT3-5021-000		1	CORD, POWER SUPPLY	115/120V	
42	XA9-0767-000		2	SCREW,TP,M3X10		
43	XA9-0938-000		1	SCREW,TP,M3X35		
44	FH2-6427-000		1	CORD,POWER SUPPLY	100V	
45	FH2-5276-000		1	CORD,POWER SUPPLY	AUS	
46	RH2-5015-000		1	CORD,POWER SUPPLY	UK	
47	FH2-5288-000		1	GROUNDING WIRE, BARE	100V	
501	XB2-7300-607		2	SCREW,W/WASHER,M3X6		
502	XB4-7260-609		2	SCREW,TAPPING,TRUSS HEAD,2.6X6		
503	XB4-7300-509		1	SCREW,TAPPING,TRUSS HEAD,M3X5		
504	XB4-7300-809		1	SCREW,TAPPING,TRUSS HEAD,M3X8		
505	XB4-7400-805		2	SCREW,TAPPING,TRUSS HEAD,M4X8		
506	XB4-7400-805		5	SCREW,TAPPING,TRUSS HEAD,M4X8		
507	XB4-7401-009		2	SCREW,TAPPING,TRUSS HEAD,M4X10		
508	XB4-7401-009		4	SCREW,TAPPING,TRUSS HEAD,M4X10		
509	XB6-7300-409		1	SCREW,TP,M3X4		

# FIGURE 102A

## LOWER MAIN BODY (SINGLE TYPE)



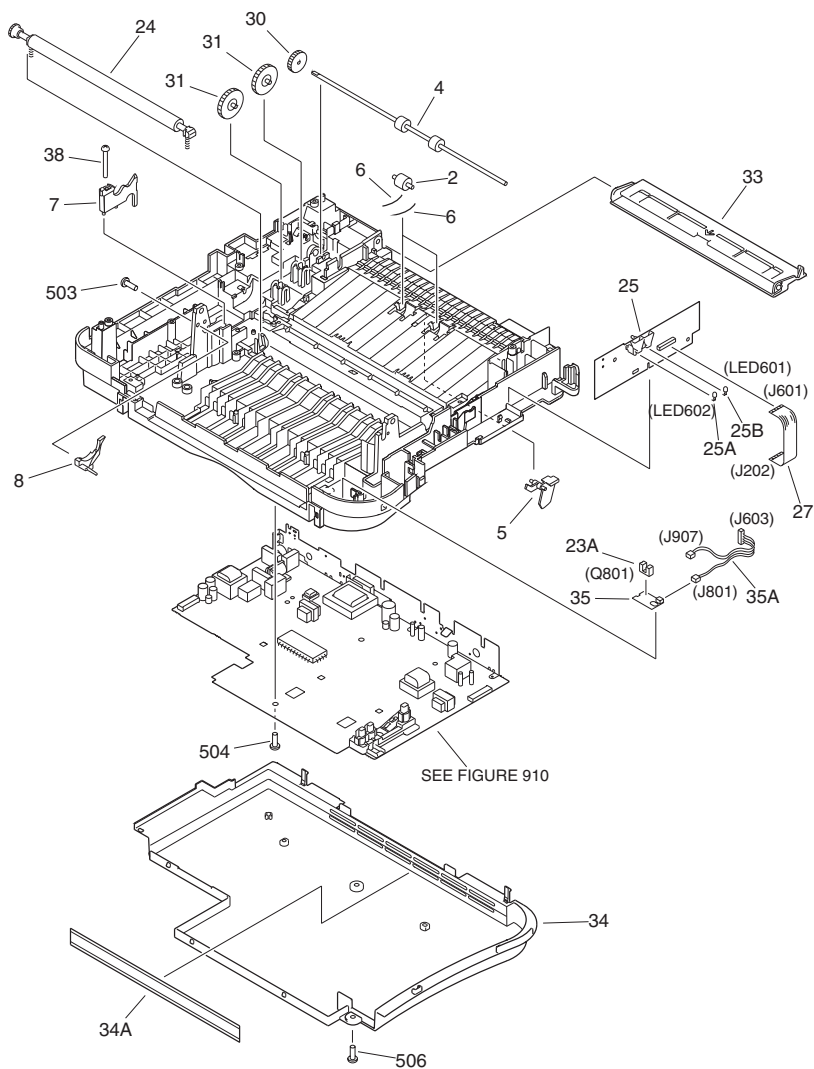


FIGURE & KEY NO.	PARTS NUMBER	R A N K	Q'TY	DESCRIPTION	SERIAL NUMBER/ REMARKS	S V C
Fig.102A	NPN		RF	LOWER MAIN BODY	SINGLE TYPE	
1	FA9-2568-000		1	SCREW,MACH.,TRUSS HEAD		
2	FB1-0624-000		2	ROLLER, PAPER PICK-UP		

FIGURE & KEY NO.	PARTS NUMBER	R A N K	Q'TY	DESCRIPTION	SERIAL NUMBER/ REMARKS	S V C
3	FB1-0723-000		2	PAD, RUBBER		
4	FB1-8832-000		1	ROLLER, SLIP		
5	FB1-8833-020		1	ARM, PAPER PICK-UP SENSOR		
6	FB1-8835-000		4	SPRING, WIRE		
7	FB1-9273-000		1	MOUNT, CARTRIDGE, REAR		
8	FB2-9570-000		1	BLOCK, SHUTTER		
9	FB2-9572-000		1	PLATE, TRANSFER TERMINAL		
10	FB2-9574-000		1	GUIDE, TRANSFER, LOWER		
11	FB2-9575-000		1	PLATE, CONTINUITY		
12	FB2-9622-020		1	HOLDER, DOOR SWITCH		
13	FB2-9641-000		1	BELT, FAN		
14	FB4-0048-000		1	PLATE, DOOR SWITCH LINK, 2		
15	FB4-0055-000		2	SPRING, COMPRESSION		
16	FB4-0246-000		1	LINK, 5		
17	FB4-0262-000		1	PLATE, LINK BLANKING		
18	FF2-7829-000		1	VARISTOR		
19	FF2-9928-000		1	CABLE, HEATER CONNECTOR	J909	
20	FF3-0150-000		1	VARISTOR		
21	FF3-2663-000		1	INLET,AC	EXCEPT 100V	
22	FF5-1644-040		1	STATIC CHARGE ELIMINATOR		
23	FG5-4808-000		1	MOTOR DRIVE SENSOR PCB ASSY	J904	
23A	WG8-0280-000		1	PHOTO-INTERRUPTER	Q901	
24	FG5-4815-000		1	TRANSFER ROLLER UNIT		
25	FG6-7176-000		1	CONTROL PANEL PCB UNIT	EXCEPT 100V	
25	FG5-9504-000		1	CONTROL PANEL PCB UNIT	FC500 100V	
25A	FH9-0535-000		1	LED, SLA-380LT3F	LED602	
25B	FH9-0536-000		1	LED, SLA-380MT3F	LED601	
26	FH2-5274-000		1	CORD, POWER SUPPLY	AMS,RUSSIA,GENERAL	
27	FH2-6224-000		1	CABLE, FLAT	J202,601	
28	FH2-6488-000		1	CORD, POWER	CHN	
29	FS1-9102-000		1	SCREW,STEPPED,M3		
30	FS5-0464-000		1	GEAR, 27T		

FIGURE & KEY NO.	PARTS NUMBER	R A N K	Q'TY	DESCRIPTION	SERIAL NUMBER/ REMARKS	S V C
31	FS5-0465-000		2	GEAR, 39T		
32	HB1-5658-000		1	GRIP	EXCEPT FC100,FC108	
32	HB1-5724-000		1	GRIP	FC100,FC108	
33	HB1-5674-000		1	TRAY,MANUAL PAPER FEED	FC500 100V	
33	HB1-5675-000		1	TRAY,MANUAL PAPER FEED	FC270	
33	HB1-5693-000		1	TRAY,MANUAL PAPER FEED	FC100,FC108	
34	HF5-0677-000		1	COVER, PCB UNIT	EXCEPT FC100,FC108	
34	HF5-0679-000		1	COVER, PCB UNIT	FC100,FC108	
34A	FB1-7467-000		1	SHEET, MESH		
35	FG5-9457-000		1	DELIVERY SENSOR PCB ASS'Y		
35A	HG5-3255-000		1	CABLE, DELIVERY THERMISTOR	J603,801,907	
35B	WG8-0280-000		1	PHOTO-INTERRUPTER	Q801	
36	WC8-5058-000		1	MICROSWITCH, DOOR	SW2	
37	XA9-0767-000		2	SCREW,TP,M3X10		
38	XA9-0938-000		1	SCREW,TP,M3X35		
39	FH2-6427-000		1	CORD,POWER SUPPLY	100V	
40	RH2-5015-000		1	CORD,POWER SUPPLY	UK	
41	FH2-5288-000		1	GROUNDING WIRE, BARE	100V	
501	XB2-7300-607		2	SCREW,W/WASHER,M3X6		
502	XB4-7300-509		1	SCREW,TAPPING,TRUSS HEAD,M3X5		
503	XB4-7300-809		1	SCREW,TAPPING,TRUSS HEAD,M3X8		
504	XB4-7400-805		2	SCREW,TAPPING,TRUSS HEAD,M4X8		
505	XB4-7400-805		5	SCREW,TAPPING,TRUSS HEAD,M4X8		
506	XB4-7401-009		2	SCREW,TAPPING,TRUSS HEAD,M4X10		
507	XB4-7401-009		4	SCREW,TAPPING,TRUSS HEAD,M4X10		
508	XB6-7300-409		1	SCREW,TP,M3X4		

FIGURE 130  
CONTROL PANEL ASSEMBLY (MULTI TYPE)

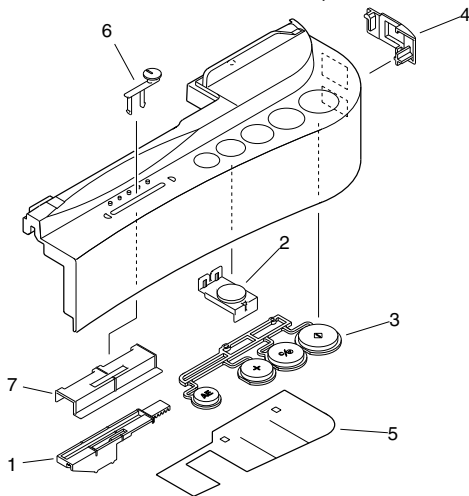


FIGURE & KEY NO.	PARTS NUMBER	RANK	Q'TY	DESCRIPTION	SERIAL NUMBER/REMARKS	SVC
Fig.130	HG5-3155-000		1	CONTROL PANEL ASSEMBLY	EXCEPT FC120,FC128	
Fig.130	HG5-3177-000		1	CONTROL PANEL ASSEMBLY	FC120,FC128	
1	HB1-5635-000		1	RACK, VOLUME	EXCEPT FC120,FC128	
1	HB1-5729-000		1	RACK, VOLUME	FC120,FC128	
2	HB1-5639-000		1	WINDOW, DISPLAY		
3	HB1-5641-000		1	KEY TOP, START/STOP		
4	HB1-5642-000		1	KEY TOP, MAIN SWITCH		
5	HB1-5643-000		1	SHEET		
6	HB1-5649-000		1	LEVER, DENSITY VOLUME	EXCEPT FC120,FC128	
6	HB1-5690-000		1	LEVER, DENSITY VOLUME	FC120,FC128	
7	HB1-5665-000		1	COVER, SLIDE		

FIGURE 130A  
CONTROL PANEL ASSEMBLY (SINGLE TYPE)

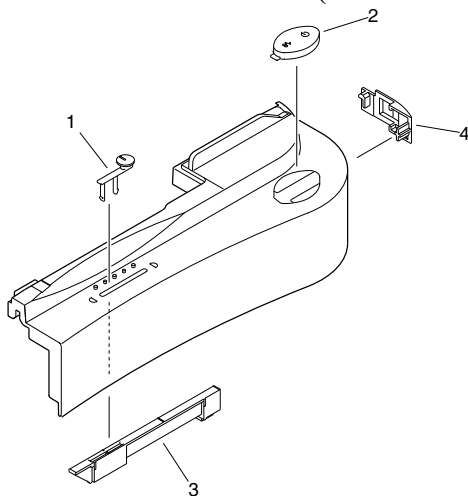


FIGURE & KEY NO.	PARTS NUMBER	R A N K	Q'TY	DESCRIPTION	SERIAL NUMBER/ REMARKS	S V C
Fig.130A	HG5-3187-000		1	CONTROL PANEL ASSEMBLY	EXCEPT FC100,FC108	
Fig.130A	HG5-3198-000		1	CONTROL PANEL ASSEMBLY	FC100,FC108	
1	HB1-5649-000		1	LEVER, DENSITY VOLUME	EXCEPT FC100,FC108	
1	HB1-5690-000		1	LEVER, DENSITY VOLUME	FC100,FC108	
2	HB1-5669-000		1	WINDOW, LED		
3	HB1-5670-000		1	LEVER, VOLUME	EXCEPT FC100,FC108	
3	HB1-5691-000		1	LEVER, VOLUME	FC100,FC108	
4	HB1-5671-000		1	KEY TOP, POWER SUPPLY		



FIGURE 160  
COPYBOARD COVER ASSEMBLY

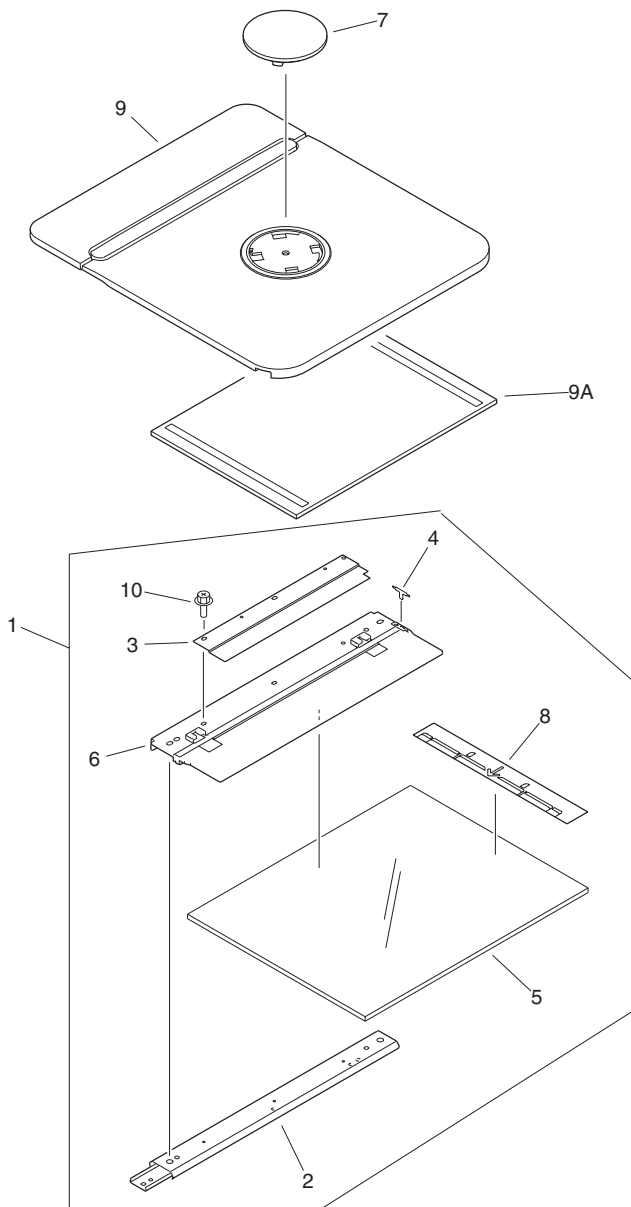


FIGURE & KEY NO.	PARTS NUMBER	R A N K	Q'TY	DESCRIPTION	SERIAL NUMBER/ REMARKS	S V C
Fig.160	NPN		RF	COPY BOARD COVER ASSEMBLY		
1	HG5-3153-000		1	COPY BOARD ASSEMBLY	FC270,FC290,FC298,PC140	
1	HG5-3152-000		1	COPY BOARD ASSEMBLY	FC500,FC520	
1	HG5-3180-000		1	COPY BOARD ASSEMBLY	FC100,FC108,FC120,FC128	
2	FB4-0027-000		1	RAIL		
3	FB4-0029-000		1	PLATE, RACK SUPPORT		
4	FB4-0030-000		1	SHEET, RACK GUIDE		
5	FN1-4327-000		1	GLASS, COPYBOARD		
6	HB1-5660-000		1	MOUNT, RACK	EXCEPT FC100,FC108,FC120,FC128	
6	HB1-5733-000		1	MOUNT, RACK	FC100,FC108,FC120,FC128	
7	HB1-5701-000		1	EMBLEM	RED	
7	HB1-5702-000		1	EMBLEM	GRAY	
7	HB1-5644-000		1	EMBLEM	BLUE	
7	HB1-5735-000		1	EMBLEM	DARK GRAY	
7	HB1-5736-000		1	EMBLEM	DARK GRAY/METAL	
8	HB1-5709-000		1	PLATE, VERICAL SIZE INDEX	FC270,FC290,FC298,PC140	
8	HB1-5708-000		1	PLATE, VERICAL SIZE INDEX	FC500,FC520	
8	HB1-5726-000		1	PLATE, VERICAL SIZE INDEX	FC100,FC108,FC120,FC128	
9	HF5-0675-000		1	COVER, COPYBOARD	RED	
9	HF5-0676-000		1	COVER, COPYBOARD	GRAY	
9	HF5-0674-000		1	COVER, COPYBOARD	BLUE	
9	HF5-0680-000		1	COVER, COPYBOARD	DARK GRAY	
9A	FB1-7451-000		1	SHEET, COPYBOARD		
10	XA9-0762-000		3	SCREW,RS,M3X8		

FIGURE 240  
COPYBOARD DRIVE ASSEMBLY

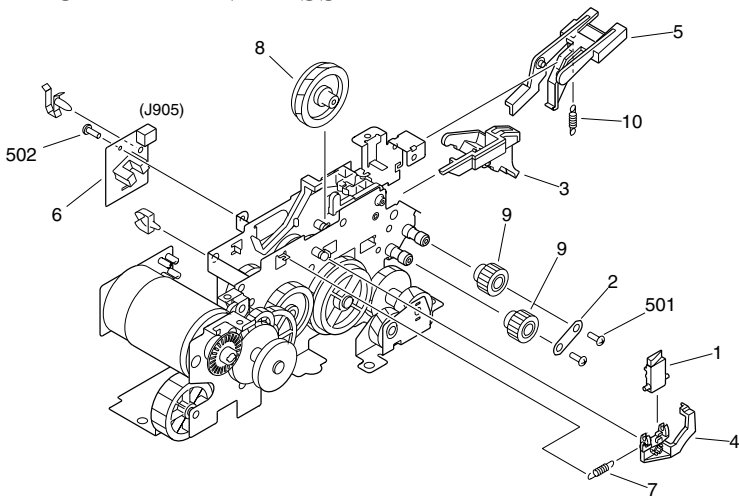


FIGURE & KEY NO.	PARTS NUMBER	R A N K	Q'TY	DESCRIPTION	SERIAL NUMBER/ REMARKS	S V C
Fig.240	FG5-9534-040		1	COPYBOARD DRIVE ASSEMBLY		
1	FB1-7356-020		1	LINK, REGISTRATION, 1		
2	FB2-9639-000		1	PLATE, GEAR SUPPORT		
3	FB2-9640-000		1	LINK,REGISTRATION,3		
4	FB2-9645-020		1	LINK, REGISTRATION, 2		
5	FB4-0353-000		1	LINK, REGISTRATION, 4		
6	FG5-4800-000		1	COPYBOARD POSITION SENSOR PCB	J905	
7	FS5-2347-000		1	SPRING, TENSION		
8	FS6-0344-000		1	GEAR, 30Z		
9	FS6-0355-000		2	GEAR, 16T		
10	FS6-2728-000		1	SPRING, TENSION		
501	XB1-2300-409		10	SCREW,MACH.,TRUSS HEAD,M3X4		
502	XB6-7300-409		2	SCREW,TP,M3X4		

FIGURE 320  
REGISTRATION ROLLER ASSEMBLY

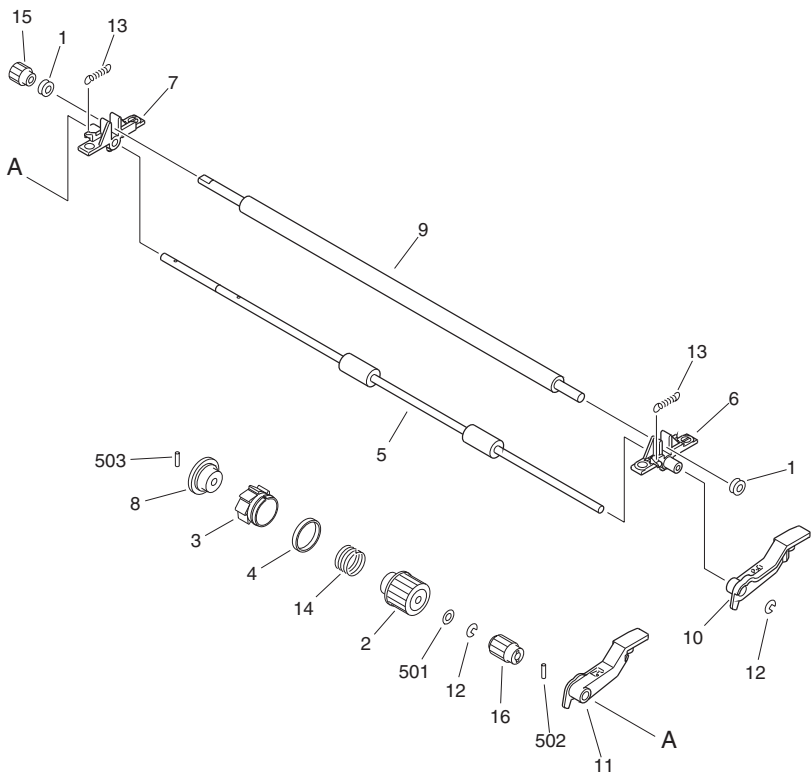


FIGURE & KEY NO.	PARTS NUMBER	R A N K	Q'TY	DESCRIPTION	SERIAL NUMBER/ REMARKS	S V C
Fig.320	FG5-9535-020		1	REGISTRATION ROLLER ASSEMBLY		
1	FB1-7316-000		2	BUSHING	SEE NOTE	
2	FB1-7317-000		1	GEAR, 20T		
3	FB1-7319-000		1	RING, CONTROL		
4	FB1-7344-000		1	RUBBER, RING		
5	FB2-9594-000		1	ROLLER, REGISTRATION, LOWER		
6	FB2-9595-020		1	SUPPORT, REGIST. ROLLER, FRONT		
7	FB2-9596-020		1	SUPPORT, REGIST. ROLLER, REAR		
8	FB2-9599-000		1	DRUM, CLUTCH		
9	FB2-9600-000		1	ROLLER, REGISTRATION, UPPER	SEE NOTE	



FIGURE 340  
PAPER PICK-UP ROLLER ASSEMBLY (MULTI TYPE)

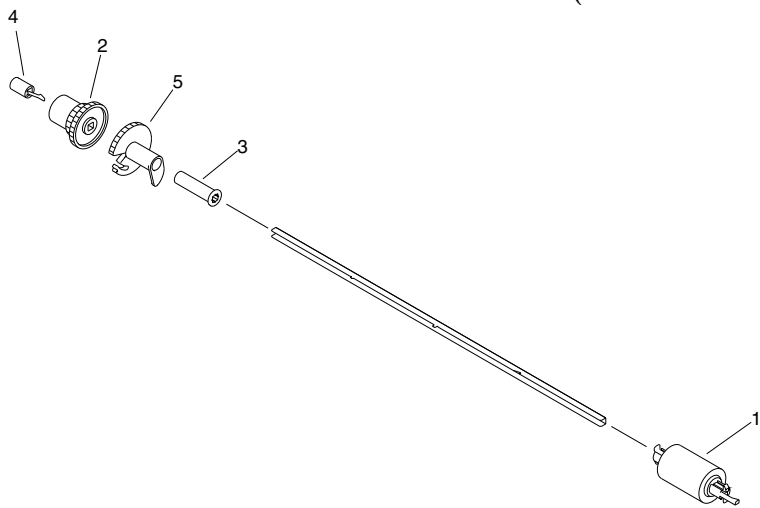
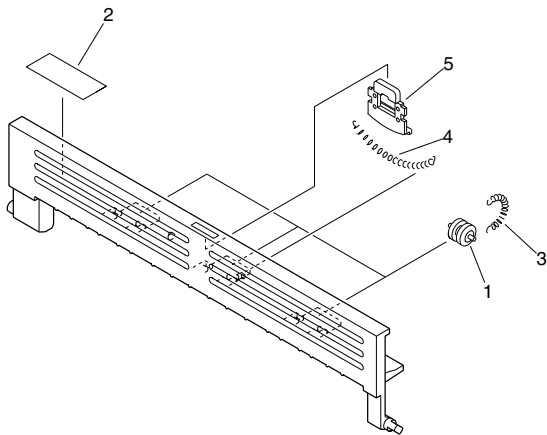


FIGURE & KEY NO.	PARTS NUMBER	R A N K	Q'TY	DESCRIPTION	SERIAL NUMBER/ REMARKS	S V C
Fig.340	FG5-9609-000		1	PAPER PICK-UP ROLLER ASSEMBLY	MULTI TYPE	
1	FB1-7303-000		1	ROLLER, PAPER PICK-UP		
2	FB1-7305-000		1	GEAR, 34T		
3	FB1-7306-000		1	BUSHING		
4	FB1-7307-000		1	BUSHING		
5	FB1-7308-020		1	GEAR, 34T		

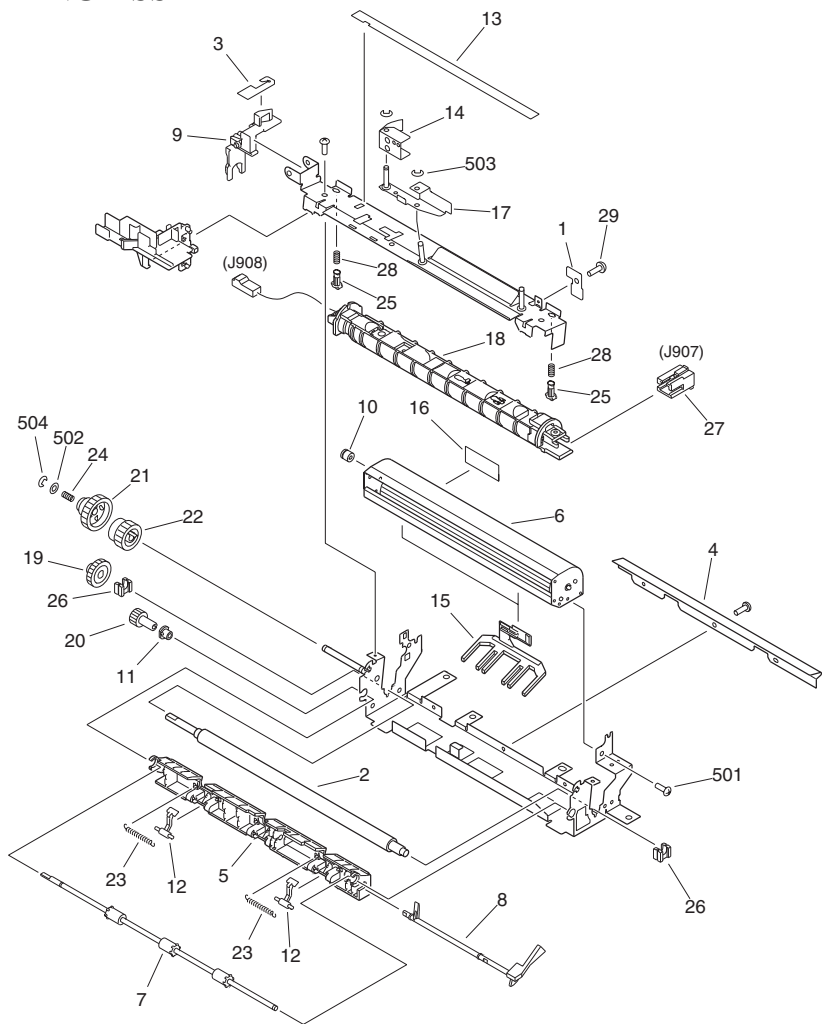
FIGURE 370  
DELIVERY COVER ASSEMBLY



NOTE:This assembly does not include the part shown with key No.2.

FIGURE & KEY NO.	PARTS NUMBER	RANK	Q'TY	DESCRIPTION	SERIAL NUMBER/REMARKS	SVC
Fig.370	HG5-3154-000		1	DELIVERY COVER ASSEMBLY	EXCEPT FC100,FC108,FC120,FC128	
Fig.370	HG5-3179-000		1	DELIVERY COVER ASSEMBLY	FC100,FC108,FC120,FC128	
1	FB2-5016-000		3	ROLLER		
2	FB4-0370-000		1	LABEL, CAUTION, HIGH TEMP.	SEE NOTE CHN	
2	FB2-9653-000		1	LABEL, CAUTION	SEE NOTE EXCEPT CHN,KOR,RUSSIA	
2	FC2-5845-000		1	LABEL, CAUTION	SEE NOTE KOR	
2	FB4-0376-000		1	LABEL, CAUTION, HIGH TEMP.	SEE NOTE RUSSIA	
3	FS5-2796-000		3	SPRING, TENSION		
4	FS6-2169-000		1	SPRING, TENSION		
5	HB1-5706-000		1	LEVER, RELEASE		

FIGURE 810  
FIXING ASSEMBLY



NOTE: This assembly does not include the part shown with key No. 27.

FIGURE & KEY NO.	PARTS NUMBER	RANK	Q'TY	DESCRIPTION	SERIAL NUMBER/REMARKS	SVC
Fig.810	FG5-9614-000		1	FIXING ASSEMBLY	CHN	
Fig.810	FG5-9619-000		1	FIXING ASSEMBLY	RUSSIA	
Fig.810	FG5-9536-000		1	FIXING ASSEMBLY	100V	



FIGURE & KEY NO.	PARTS NUMBER	R A N K	Q'TY	DESCRIPTION	SERIAL NUMBER/ REMARKS	S V C
Fig.810	FG5-9537-000		1	FIXING ASSEMBLY	115/120V	
Fig.810	FG5-9538-000		1	FIXING ASSEMBLY	AMS,UK,AUS,GENERAL	
Fig.810	FG5-9539-000		1	FIXING ASSEMBLY	KOR	
1	FB1-7333-000		1	SHEET, INSULATING		
2	FB2-9601-000		1	ROLLER, PRESSURE		
3	FB2-9603-000		1	SHEET, RELEASE ARM	P. ESTER	
4	FB2-9608-000		1	PLATE, INLET GUIDE		
5	FB2-9610-000		1	GUIDE, PAPER DELIVERY, LOWER		
6	FB2-9611-020		1	FAN, EXHAUST		
7	FB2-9612-000		1	ROLLER, PAPER DELIVERY		
8	FB2-9613-020		1	ARM, PAPER DELIVERY SENSOR		
9	FB2-9614-000		1	ARM, DRIVE RELEASE		
10	FB2-9616-000		1	PULLEY, FAN		
11	FB2-9617-000		1	BUSHING		
12	FB2-9625-000		2	CLAW, SEPARATION		
13	FB2-9627-000		1	SHEET, WIND BLOCK		
14	FB4-0049-000		1	SPRING, LEAF		
15	FB4-0357-000		2	GUIDE, INLET, UPPER		
16	FB4-0370-000		1	LABEL, CAUTION, HIGH TEMP.	CHN	
16	FB4-0376-000		1	LABEL, CAUTION, HIGH TEMP.	RUSSIA	
16	FB4-0365-000		1	LABEL, CAUTION	AMS,UK,AUS,GENERAL	
16	FB2-9653-000		1	LABEL, CAUTION	EXCEPT CHN,KOR,RUSSIA	
16	FC2-5845-000		1	LABEL, CAUTION, HIGH TEMP.	KOR	
17	FF5-6421-000		1	LINK, DOOR SWITCH, 1		
18	FG5-4809-000		1	FIXING UPPER ASSEMBLY	100V	
18	FG5-4810-000		1	FIXING UPPER ASSEMBLY	115/120V	
18	FG5-4811-000		1	FIXING UPPER ASSEMBLY	220/240V	
19	FS6-0337-000		1	GEAR, 22T		
20	FS6-0338-000		1	GEAR, 12T		
21	FS6-0339-000		1	GEAR, 32T		
22	FS6-0340-020		1	GEAR, 22T		
23	FS6-2163-000		2	SPRING, TENSION		

FIGURE & KEY NO.	PARTS NUMBER	R A N K	Q'TY	DESCRIPTION	SERIAL NUMBER/ REMARKS	S V C
24	FS6-2164-000		1	SPRING, COMPRESSION	SEE NOTE J907	
25	RB1-3087-000		2	PIN		
26	RB1-3090-000		2	BUSHING, PRESSURE ROLLER		
27	RH2-5336-000		1	CONNECTOR, DC		
28	RS5-2223-000		2	SPRING, PRESSURE		
29	XA9-0233-000		1	SCREW,W/WASHER,M3X6		
501	XB1-2300-409		5	SCREW,MACH.,TRUSS HEAD,M3X4		
502	XD1-1106-239		1	SHIM		
503	XD2-1100-322		2	RING,E		
504	XD2-1100-502		1	RING,E		

FIGURE 910  
DC CONT. / DC POWER SUPPLY PCB ASSEMBLY

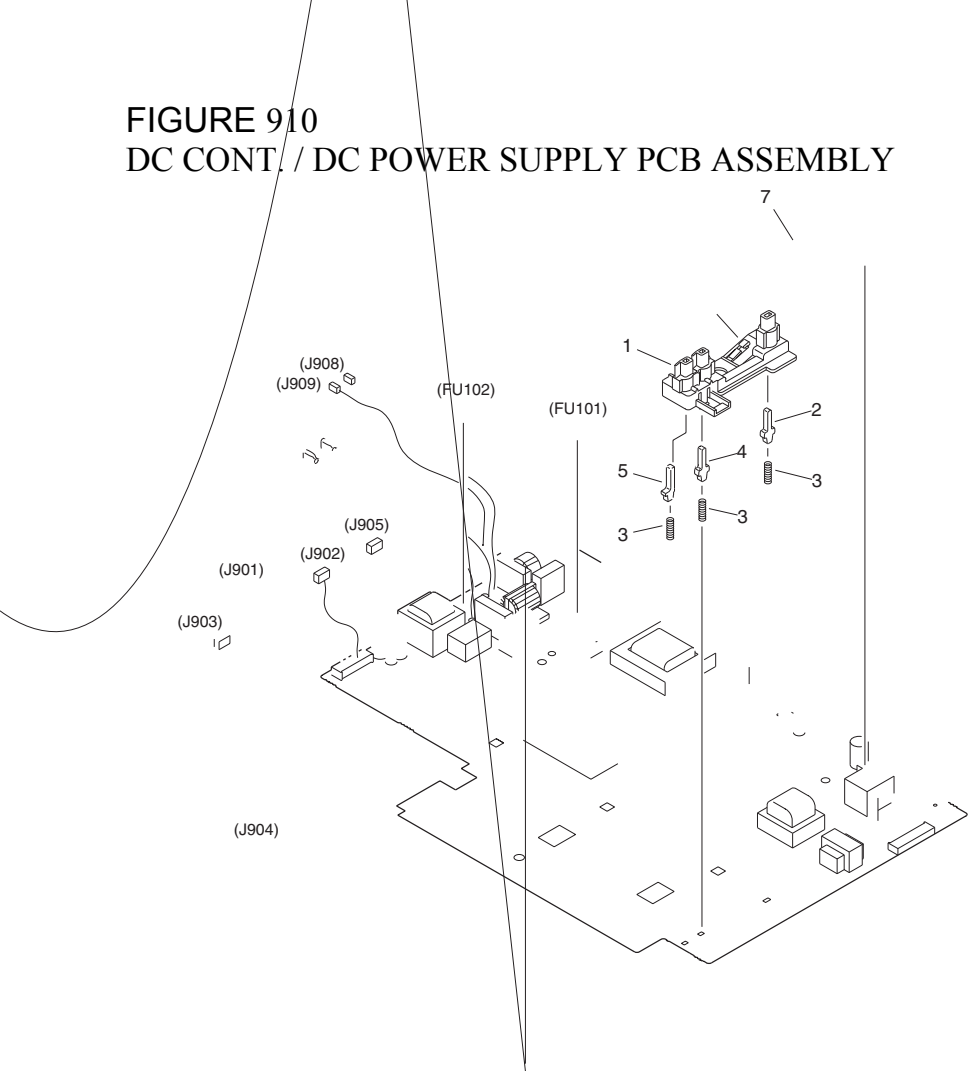


FIGURE & KEY NO.	PARTS NUMBER	R A N K	Q'TY	DESCRIPTION	SERIAL NUMBER/ REMARKS	S V C
Fig.910	FG5-9500-000		1	DC CON/DC P.SUPPLY PCB ASS'Y	FC500 100V	
Fig.910	FG5-9502-000		1	DC CON/DC P.SUPPLY PCB ASS'Y	FC270,FC100,FC108 220/ 240V	
Fig.910	FG5-9458-000		1	DC CON./DC P. SUPPLY PCB ASS'Y	FC290 TWN	
Fig.910	FG5-9452-000		1	DC CON./DC P. SUPPLY PCB ASS'Y	FC120,FC128,FC290,FC2 98 220/240V	
Fig.910	FG5-9450-000		1	DC CON./DC P. SUPPLY PCB ASS'Y	FC520 100V	
Fig.910	FG5-9451-000		1	DC CON./DC P. SUPPLY PCB ASS'Y	PC140 120V	

FIGURE & KEY NO.	PARTS NUMBER	R A N K	Q'TY	DESCRIPTION	SERIAL NUMBER/ REMARKS	S V C
1	FB1-7424-020		1	HOLDER, H.V.T.		
2	FB1-7425-000		1	PIN CONTACT		
3	FB1-7427-000		3	SPRING, COMPRESSION		
4	FB1-7430-000		1	PIN CONTACT		
5	FB1-7431-000		1	PIN CONTACT		
6	FB2-9647-000		1	SHEET, CABLE PROTECTIVE	SEE NOTE	
7	FF2-7814-000		1	CABLE, TRANSFER CONTINUITY		
FU101	VD7-0042-501		1	FUSE, 250V, 2.5A	100/115/120V	
FU101	VD7-0641-601		1	FUSE,250V,2.5A	220/240V	
FU102	VD7-0211-002		1	FUSE 125V 10A, 737010	100/115/120V	
FU102	VD7-0645-001		1	FUSE,125V 10A,737010	220/240V	
J101	FF2-9932-000		1	CABLE, FIXING AC CONTINUITY, H		
J102	FF2-9933-000		1	CABLE, FIXING AC CONTINUITY, N		
J103	FF3-2671-000		1	CABLE, AC, N		
J104	FF3-2673-000		1	CABLE, AC, H		
J108	FF3-2677-000		1	CABLE, LAMP		
J201	FF3-2666-000		1	CABLE, HIGH VOLTAGE, 1	SINGLE TYPE MAGENTA	
J201	FF3-2665-000		1	CABLE, HIGH VOLTAGE, 1	MULTI TYPE MAGENTA	
JP1	FF3-2669-000		1	CABLE, HIGH VOLTAGE, 3	BLACK	
JP2	FF3-2667-000		1	CABLE, HIGH VOLTAGE, 2	RED	
L101	FH9-0491-000		1	FILTER,NOISE	100/120V	
L101	FH7-9218-000		1	FILTER,NOISE	220/240V	
L102	FH7-9219-000		1	COIL,SU	220/240V	
L302	FH9-0490-000		1	COIL, SN	115/120V	
L302	FH7-9220-000		1	COIL,SC	220/240V	
L302	FH7-9238-000		1	COIL,SC	100V	
Q144	FH4-1304-000		1	IC, UPD18001CW-532, MPU	SINGLE TYPE MAGENTA	
Q144	FH4-1303-000		1	IC, UPD18001CW-531, MPU	MULTI TYPE MAGENTA	
R268	FH4-9157-000		1	RESISTOR, 4MOHM, 1/4W		
R271	FH4-9156-000		1	RESISTOR, 2MOHM, 1/2W		
R274	FH4-9196-000		1	RESISTOR, 1.2MOHM, 1W		
R285	FH4-9195-000		1	RESISTOR, 40MOHM, 0.69W		

FIGURE & KEY NO.	PARTS NUMBER	R A N K	Q'TY	DESCRIPTION	SERIAL NUMBER/ REMARKS	S V C
R307	FH4-9195-000		1	RESISTOR, 40MOHM, 0.69W		
RL101	FH7-6197-000		1	RELAY		
SQ101	RH6-3434-000		1	FILTER, NOISE		
T101	FH3-0749-000		1	TRANSFORMER	100/115/120V	
T101	FH3-0753-000		1	TRANSFORMER	220/240V	
T102	FH3-0751-000		1	TRANSFORMER		
T103	FH3-0856-000		1	TRANSFORMER		
T104	FH3-0746-000		1	TRANSFORMER		
T105	FH3-0750-000		1	TRANSFORMER	100/115/120V	
T105	FH3-0755-000		1	TRANSFORMER	220/240V	
T106	FH3-0850-000		1	TRANSFORMER	100/115/120V	
T106	FH3-0851-000		1	TRANSFORMER	220/240V	
T107	FH3-0638-000		1	TRANSFORMER		

FIGURE B  
LIST OF CONNECTORS

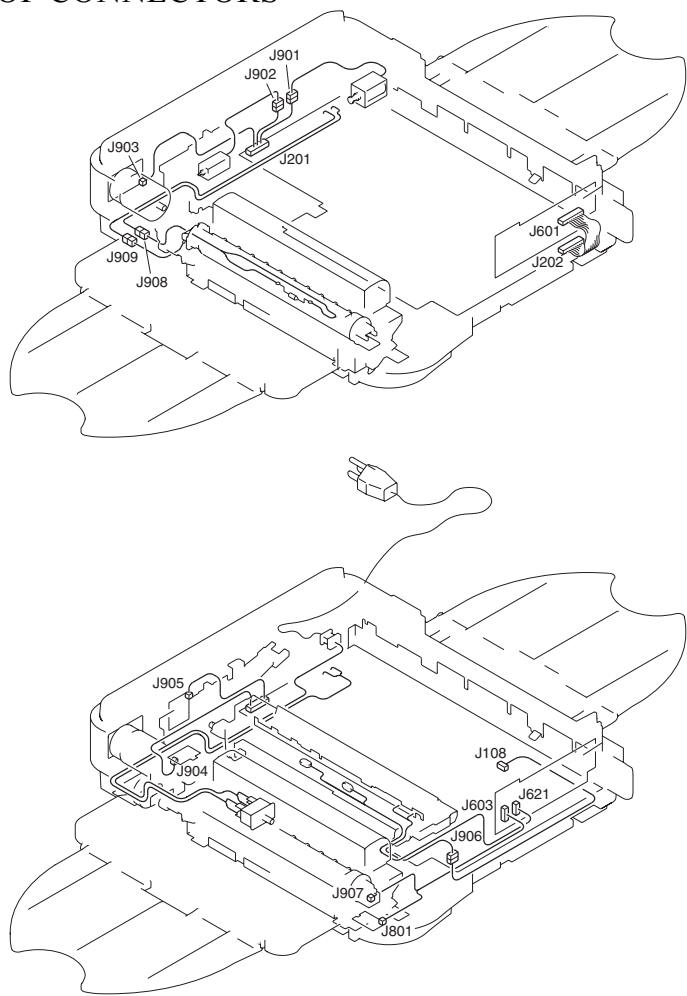


FIGURE & KEY NO.	PARTS NUMBER	R A N K	Q'TY	DESCRIPTION	SERIAL NUMBER/ REMARKS	S V C
Fig.B	NPN		RF	LIST OF CONNECTORS		
J202	PCB			DC CONTROLLER/DC POWER SUPPLY		
J202	FH2-6223-000		1	CABLE, FLAT	MULTI TYPE	
J202	FH2-6224-000		1	CABLE, FLAT	SINGLE TYPE	
J601	PCB			CONTROL PANEL		

FIGURE & KEY NO.	PARTS NUMBER	R A N K	Q'TY	DESCRIPTION	SERIAL NUMBER/ REMARKS	S V C
J601	FH2-6223-000		1	CABLE, FLAT	MULTI TYPE	
J601	FH2-6224-000		1	CABLE, FLAT	SINGLE TYPE	
J603	PCB			CONTROL PANEL		
J603	VS1-0842-005		1	CONNECTOR, 5P, FEMALE		
J621	PCB			CONTROL PANEL		
J621	VS1-0842-004		1	CONNECTOR, 4P, FEMALE		
J801	PCB			DELIVERY SENSOR		
J801	VS1-0842-003		1	CONNECTOR, 3P, FEMALE		
J901	PCB			DC CONTROLLER/DC POWER SUPPLY		
J901	NPN			SOLENOID	SL1	
J902	PCB			DC CONTROLLER/DC POWER SUPPLY		
J902	NPN			COPYBOARD DRIVE SOLENOID	SL2	
J903	PCB			DC CONTROLLER/DC POWER SUPPLY		
J903	NPN			COPYBOARD DRIVE MOTOR		
J904	PCB			MOTOR DRIVE SENSOR		
J904	PCB			DC CONTROLLER/DC POWER SUPPLY		
J905	PCB			DC CONTROLLER/DC POWER SUPPLY		
J905	PCB			COPYBOARD HOME POSITION SENSOR		
J906	PCB			DC CONTROLLER/DC POWER SUPPLY		
J906	PCB			LAMP		
J907	RH2-5336-000		1	CONNECTOR, DC		
J907	VS3-0198-003		1	CONNECTOR, 3P, MALE		
J908	PCB			DC CONTROLLER/DC POWER SUPPLY		
J908	NPN			FIXING UPPER UNIT		
J909	PCB			DC CONTROLLER/DC POWER SUPPLY		
J909	VS3-5093-001		1	CONNECTOR, 1P, MALE		
J909	WS3-5225-000		1	PIN CONTACT		





Prepared by  
OFFICE IMAGING PRODUCTS QUALITY ASSURANCE CENTER  
CANON INC.

**Canon**