

PARTS CATALOG

imageRUNNER ADVANCE C351/C350/C250 Series

Canon

May 28 2014

PREFACE

This Parts Catalog contains listings of parts used

Diagrams are provided with the listings to aid the service technician in identifying clearly, the item to be orderd.

Whenever ordering parts, consult this Parts Catalog for all of the information pertaining to each item. Be sure to include, in the Parts Request, the full item description, the item part number, and the quantity.

COPYRIGHT (C) 1999 CANON INC.

Use of this manual should be
strictly supervised to avoid
disclosure of confidential
information.

Contents

NUMERICAL INDEX

imageRUNNER ADVANCE C351/C350/C250 Series(Numerical Index) 1-1

imageRUNNER ADVANCE C351/C350/C250 Series(Parts Catalog)

A1	ASSEMBLY LOCATION DIAGRAM	2-1
A2	OPTION PARTS CATALOG LIST	2-6
001	ACCESSORIES	2-7
100	EXTERNAL COVERS, PANELS, ETC.	2-9
101	DOOR ASSEMBLY, FRONT	2-11
102	DOOR ASSEMBLY, RIGHT	2-13
103	INTERNAL COMPONENTS 1	2-18
104	INTERNAL COMPONENTS 2	2-20
105	INTERNAL COMPONENTS 3	2-22
106	INTERNAL COMPONENTS 4	2-24
107	INTERNAL COMPONENTS 5	2-26
108	MACHINE REAR PLATE 1	2-28
109	MACHINE REAR PLATE 2	2-30
130	CONTROL PANEL ASSEMBLY	2-32
190	CARTRIDGE AIR INTAKE FAN ASS'Y	2-35
191	DELIVERY COOLING FAN ASSEMBLY	2-36
192	POWER SUPPLY FAN ASSEMBLY	2-37
250	MAIN DRIVE ASSEMBLY	2-38
260	PAPER PICK-UP DRIVE ASSEMBLY	2-39
270	BOTTLE DRIVE ASSEMBLY	2-40
280	FIXING DRIVE ASSEMBLY	2-41
290	PICK-UP LIFTER DRIVE ASS'Y	2-42
300	CASSETTE	2-43
310	RESIST/PAPER PICK-UP ASS'Y	2-46
330	MULTI FEED TRAY ASSEMBLY	2-49
331	MULTI FEED PAPER PICK-UP ASS'Y	2-51
332	DUPLEXING GUIDE ASSEMBLY	2-52
350	PAPER DELIVERY/REVERSE ASS'Y	2-53
460	LASER SCANNER ASSEMBLY	2-56
530	INTER. TRANSFER BELT ASS'Y	2-57
621	BOTTLE MOUNT ASSEMBLY	2-58
622	HOPPER ASSEMBLY	2-59
771	INTERNAL COVER ASSEMBLY	2-60
772	CONTAINER, WASTE TONER, WT-201	2-61
810	FIXING ASSEMBLY, FX-201	2-62

Contents

900	CONTROLLER BOX ASSEMBLY	2-64
910	POWER SUPPLY ASSEMBLY	2-66
930	DC CONTROLLER PCB ASSEMBLY	2-67
B01	ADF MAINTENANCE KIT	2-68
B10	READER/ADF ASSEMBLY	2-69
B11	AUTO DOCUMENT FEEDER ASSEMBLY	2-71
B12	FEEDER COVER ASSEMBLY	2-76
B13	PAPER FEED DRIVE ASSEMBLY	2-78
D10	READER ASSEMBLY	2-79
T20	FAX ASSEMBLY (FAX model)	2-82
T21	SPEAKER (FAX model)	2-84
ZZA	MECHANICAL STANDARD PARTS (HOW TO USE)	2-85
ZZB	MECHANICAL STANDARD PARTS (SCREWS)	2-86
ZZC	MECHANICAL STANDARD PARTS (BOLTS)	2-93
ZZD	MECHANICAL STANDARD PARTS (NUTS)	2-94
ZZE	MECHANICAL STANDARD PARTS (RETAINING RINGS)	2-95

NUMERICAL INDEX

imageRUNNER ADVANCE C351/C350/C250 Series(Numerical Index)

PARTS NUMBER	FIGURE & KEY NO.	PARTS NUMBER	FIGURE & KEY NO.	PARTS NUMBER	FIGURE & KEY NO
FC0-0695-000	D10 - 4	FC0-5971-000	772 - 2	FC0-7702-000	101 - 11
FC0-3267-000	130 - 1	FC0-5972-000	771 - 1	FC0-7702-000	103 - 6
FC0-5542-000	D10 - 5	FC0-6078-000	810 - 1	FC0-7703-000	101 - 11
FC0-5544-000	B10 - 4	FC0-6079-000	810 - 2	FC0-7703-000	103 - 6
FC0-5547-000	D10 - 6	FC0-6086-000	810 - 3	FC0-7708-000	106 - 5
FC0-5548-000	D10 - 7	FC0-6088-000	810 - 4	FC0-7728-000	105 - 3
FC0-5550-000	D10 - 8	FC0-6092-000	810 - 5	FC0-7730-000	100 - 23
FC0-5552-000	D10 - 17	FC0-6102-000	350 - 6	FC0-7731-000	100 - 23
FC0-5553-000	D10 - 9	FC0-6131-000	810 - 6	FC0-7734-000	101 - 3
FC0-5554-000	D10 - 10	FC0-6156-000	810 - 7	FC0-7759-000	330 - 10
FC0-5555-000	D10 - 11	FC0-6157-000	810 - 8	FC0-7760-000	330 - 10
FC0-5557-000	D10 - 12	FC0-6502-000	104 - 4	FC0-7761-000	330 - 10
FC0-5574-000	B11 - 57	FC0-6612-000	102 - 8	FC0-7790-000	100 - 19
FC0-5587-000	B11 - 1	FC0-6614-000	102 - 70	FC0-7791-000	100 - 19
FC0-5588-000	B11 - 2	FC0-6621-000	330 - 1	FC0-7792-000	100 - 19
FC0-5589-000	B11 - 3	FC0-6637-000	331 - 1	FC0-7807-000	101 - 12
FC0-5591-000	B11 - 4	FC0-6968-000	310 - 3	FC0-7827-000	350 - 32
FC0-5593-000	B11 - 5	FC0-6979-000	310 - 4	FC0-7828-000	350 - 31
FC0-5614-000	B10 - 1	FC0-6985-000	772 - 3	FC0-7830-000	300 - 16
FC0-5622-000	B13 - 1	FC0-7048-000	106 - 1	FC0-7832-000	300 - 15
FC0-5623-000	B13 - 2	FC0-7068-000	105 - 9	FC0-8988-000	130 - 2
FC0-5629-000	B11 - 6	FC0-7171-000	100 - 21	FC5-7863-000	130 - 25
FC0-5634-000	B11 - 7	FC0-7172-000	103 - 2	FC6-1353-000	310 - 11
FC0-5639-000	B12 - 1	FC0-7174-000	310 - 5	FC6-3002-000	310 - 51
FC0-5650-000	D10 - 14	FC0-7188-000	105 - 1	FC7-6052-010	B11 - 9
FC0-5651-000	D10 - 15	FC0-7204-000	310 - 6	FC7-6108-000	350 - 34
FC0-5801-000	103 - 12	FC0-7205-000	310 - 7	FC7-6142-000	100 - 26
FC0-5846-000	101 - 7	FC0-7211-000	310 - 8	FC7-6189-000	B12 - 2
FC0-5848-000	102 - 40	FC0-7213-000	100 - 5	FC7-6303-000	B11 - 11
FC0-5861-000	102 - 41	FC0-7218-000	310 - 9	FC8-4137-000	100 - 6
FC0-5862-000	102 - 42	FC0-7446-000	102 - 9	FC8-4990-000	300 - 3
FC0-5875-000	102 - 1	FC0-7447-000	331 - 2	FC8-8205-000	101 - 4
FC0-5876-000	102 - 2	FC0-7453-000	330 - 2	FC8-8346-000	100 - 17
FC0-5876-000	310 - 1	FC0-7454-000	330 - 3	FC9-7297-000	100 - 8
FC0-5876-000	332 - 1	FC0-7477-000	900 - 10	FC9-8607-000	105 - 7
FC0-5876-000	350 - 1	FC0-7486-000	103 - 24	FC9-9069-000	100 - 25
FC0-5880-000	350 - 2	FC0-7535-000	102 - 10	FE2-1544-000	130 - 3
FC0-5886-000	332 - 2	FC0-7536-000	102 - 11	FE2-1554-000	130 - 23
FC0-5888-000	102 - 3	FC0-7567-000	100 - 15	FE2-1556-000	130 - 4
FC0-5888-000	310 - 2	FC0-7570-000	100 - 16	FE2-1566-000	100 - 9
FC0-5888-000	332 - 3	FC0-7572-000	101 - 2	FE2-1584-000	130 - 5
FC0-5891-000	350 - 3	FC0-7575-000	100 - 7	FE2-1585-000	130 - 6
FC0-5892-000	350 - 4	FC0-7589-000	771 - 2	FE2-2086-000	103 - 5
FC0-5912-000	106 - 4	FC0-7660-000	300 - 27	FE3-0387-000	331 - 3
FC0-5918-000	106 - 8	FC0-7661-000	300 - 1	FE3-0389-000	102 - 71
FC0-5929-000	106 - 6	FC0-7662-000	300 - 2	FE3-0481-000	300 - 28
FC0-5935-000	102 - 4	FC0-7670-000	310 - 10	FE3-1527-000	300 - 4
FC0-5938-000	102 - 5	FC0-7685-000	100 - 22	FE3-1528-000	300 - 5
FC0-5941-000	102 - 6	FC0-7698-000	350 - 7	FE3-1547-000	102 - 12
FC0-5942-000	106 - 2	FC0-7699-000	350 - 8	FE3-1585-000	310 - 12
FC0-5943-000	102 - 7	FC0-7701-000	101 - 11	FE3-1602-000	310 - 13
FC0-5969-000	772 - 1	FC0-7701-000	103 - 6	FE3-1617-000	102 - 13

NUMERICAL INDEX

imageRUNNER ADVANCE C351/C350/C250 Series(Numerical Index)

PARTS NUMBER	FIGURE & KEY NO.	PARTS NUMBER	FIGURE & KEY NO.	PARTS NUMBER	FIGURE & KEY NO
FE3-1617-000	310 - 14	FE3-6119-000	310 - 23	FK2-8321-000	900 - IC
FE3-1618-000	310 - 15	FE3-6143-000	300 - 8	FK2-9571-000	001 - 5
FE3-1641-000	102 - 14	FE3-6357-000	300 - 21	FK2-9904-000	001 - 5
FE3-1642-000	331 - 4	FE3-6504-000	B11 - 12	FK3-1386-000	900 - IC
FE3-1731-000	130 - 7	FE3-6570-000	D10 - 10	FK3-2024-000	B13 - 4
FE3-1742-000	130 - 8	FE3-6571-000	D10 - 10	FK3-2212-000	900 - IC
FE3-1744-000	130 - 9	FE3-7410-000	300 - 19	FK3-3034-000	900 - IC
FE3-1745-000	130 - 10	FE3-7412-000	300 - 34	FK3-3035-000	D10 - 18
FE3-1746-000	130 - 11	FE3-7698-000	B11 - 58	FK3-3038-000	D10 - 20
FE3-1747-000	130 - 12	FE3-7699-000	B11 - 59	FK4-0092-000	130 - 14
FE3-1748-000	130 - 13	FE3-7699-000	B12 - 6	FK4-0275-000	900 - 4
FE3-1760-000	102 - 15	FE3-8153-000	300 - 35	FK4-0276-000	900 - 5
FE3-2409-000	102 - 16	FE3-8290-000	B11 - 25	FK4-0638-000	280 - 1
FE3-3585-000	102 - 17	FE3-8297-000	B12 - 10	FK4-0640-000	260 - 1
FE3-3589-000	331 - 5	FE3-8298-000	B11 - 60	FK4-0641-000	280 - 2
FE3-3594-000	102 - 18	FE3-8298-000	B12 - 7	FK4-0645-000	930 - 2
FE3-3744-000	350 - 9	FE3-8375-000	B10 - 2	FK4-0647-000	107 - 2
FE3-3745-000	350 - 10	FE3-8380-000	B11 - 34	FK4-0725-000	102 - 29
FE3-3748-000	100 - 10	FE3-8381-000	B11 - 10	FK4-0815-000	192 - 1
FE3-3935-000	310 - 50	FE3-8383-000	B12 - 11	FK4-0914-000	103 - 13
FE3-3950-000	300 - 6	FE3-8409-000	106 - 9	FK4-0915-000	001 - 4
FE3-3955-000	330 - 11	FE3-8410-000	350 - 30	FK4-0922-000	130 - 15
FE3-4041-000	290 - 1	FE3-8411-000	350 - 33	FK4-1550-000	900 - 6
FE3-4464-000	001 - 2	FE3-8688-000	103 - 17	FK4-1739-000	001 - 6
FE3-4465-000	001 - 3	FE3-9145-000	B12 - 8	FK4-1740-000	001 - 6
FE3-4473-000	001 - 1	FE3-9436-000	300 - 22	FK4-1742-000	001 - 6
FE3-4476-000	300 - 7	FE3-9437-000	300 - 20	FK4-1743-000	001 - 6
FE3-4477-000	107 - 6	FE3-9461-000	350 - 5	FK4-1744-000	001 - 6
FE3-4478-000	107 - 6	FE3-9501-000	300 - 23	FK4-1745-000	001 - 6
FE3-4759-000	102 - 19	FE3-9591-000	300 - 24	FK4-1748-000	001 - 6
FE3-4760-000	102 - 20	FE3-9592-000	310 - 16	FK4-1861-000	900 - IC
FE3-4761-000	102 - 21	FE3-9593-000	310 - 46	FL0-0237-000	101 - 5
FE3-4762-000	102 - 22	FE3-9826-000	B11 - 55	FL0-0287-000	130 - 16
FE3-4764-000	102 - 23	FE3-9827-000	B11 - 56	FL0-1008-000	100 - 20
FE3-4765-000	102 - 24	FE3-9943-000	103 - 19	FL0-1009-000	350 - 14
FE3-4860-000	310 - 17	FE4-0007-000	B11 - 36	FL0-1010-000	102 - 25
FE3-4860-000	331 - 10	FE4-0306-000	300 - 26	FL0-1010-000	350 - 15
FE3-4861-000	310 - 18	FE4-1123-000	103 - 23	FL0-1011-000	102 - 30
FE3-5614-000	310 - 19	FE4-1402-000	B11 - 8	FL0-1011-000	310 - 25
FE3-5650-000	330 - 4	FE4-1425-000	300 - 29	FL0-1104-000	B11 - 13
FE3-5651-000	330 - 5	FE4-1426-000	300 - 30	FL0-1105-000	B11 - 14
FE3-5652-000	330 - 6	FE4-1427-000	300 - 31	FL0-1361-000	102 - 31
FE3-5654-000	102 - 32	FE4-1428-000	300 - 32	FL0-1515-000	310 - 48
FE3-5655-000	331 - 12	FE4-1500-000	300 - 33	FL0-1543-000	250 - 1
FE3-5739-000	350 - 11	FE4-4660-000	102 - 72	FL0-1544-000	250 - 2
FE3-5740-000	350 - 12	FK2-0408-010	B13 - 3	FL0-1570-000	310 - 26
FE3-6111-000	350 - 13	FK2-0472-010	102 - 28	FL0-1674-000	310 - 47
FE3-6112-000	310 - 20	FK2-3679-000	190 - 1	FL0-1674-000	331 - 11
FE3-6113-000	310 - 21	FK2-3679-000	191 - 1	FL0-1833-000	350 - 16
FE3-6114-000	310 - 22	FK2-5275-000	001 - 7	FL0-1834-000	310 - 24
FE3-6116-000	102 - 26	FK2-7835-010	900 - IC	FL0-2013-000	B11 - 15
FE3-6117-000	102 - 27	FK2-7852-000	900 - IC	FL0-2019-000	D10 - 24

NUMERICAL INDEX

imageRUNNER ADVANCE C351/C350/C250 Series(Numerical Index)

PARTS NUMBER	FIGURE & KEY NO.	PARTS NUMBER	FIGURE & KEY NO.	PARTS NUMBER	FIGURE & KEY NO
FL0-2020-000	B11 - 16	FM0-0038-000	108 - 4	FM1-B513-000	107 - 5
FL0-2021-000	B11 - 17	FM0-0039-000	108 - 5	FM1-B545-000	300 - 10
FL0-2564-000	B12 - 5	FM0-0040-000	250 -	FM1-B547-000	300 - 11
FL0-2565-000	B12 - 9	FM0-0042-000	108 - 6	FM1-B548-000	300 - 12
FL0-2588-000	310 - 27	FM0-0043-000	108 - 1	FM1-B549-000	102 - 34
FL0-3261-000	103 - 22	FM0-0044-000	109 - 1	FM1-B551-000	332 - 5
FL0-3763-000	104 - 7	FM0-0046-000	109 - 2	FM1-B552-000	102 - 35
FL0-3924-000	D10 - 13	FM0-0048-000	108 - 17	FM1-B553-000	102 - 36
FL0-3939-000	100 - 18	FM0-0049-000	103 - 1	FM1-B554-000	102 - 37
FL0-4485-000	310 - 52	FM0-0050-000	107 - 1	FM1-B555-000	102 - 38
FL2-6637-000	B12 - 3	FM0-0051-000	130 -	FM1-B557-000	310 - 30
FL3-1185-000	100 - 14	FM0-0053-000	910 -	FM1-B572-000	104 - 12
FL3-1430-000	B11 - 18	FM0-0058-000	100 - 1	FM1-B574-000	107 - 7
FL3-6308-000	B11 - 19	FM0-0059-000	T21 -	FM1-C318-000	102 - 43
FL3-6309-000	B11 - 20	FM0-0065-000	103 - 15	FM1-C319-000	100 - 2
FL3-6311-000	B11 - 21	FM0-0072-000	810 -	FM1-C320-000	100 - 3
FL3-6313-000	B11 - 22	FM0-0073-000	810 -	FM1-C321-000	100 - 4
FL3-6314-000	B11 - 23	FM0-0074-000	104 - 3	FM1-C323-000	107 - 9
FL3-6315-000	B11 - 61	FM0-0075-000	103 - 16	FM1-C324-000	104 - 11
FL3-6317-000	D10 - 25	FM0-0076-000	130 - 19	FM1-C340-000	810 - 9
FL3-6320-000	B11 - 24	FM0-0077-000	130 - 20	FM1-C347-000	104 - 10
FL3-6443-000	102 - 33	FM0-0079-000	108 - 7	FM1-C348-000	106 - 3
FL3-6443-000	332 - 4	FM0-0080-000	810 - 9	FM1-C743-000	930 - 1
FL3-6516-000	100 - 11	FM0-0083-000	108 - 8	FM1-C746-000	810 - 11
FL3-6517-000	100 - 13	FM0-0084-000	108 - 8	FM1-C857-000	109 - 3
FL3-6518-000	100 - 12	FM0-0085-000	910 -	FM1-C981-000	103 - 9
FL3-6519-000	101 - 1	FM0-0144-000	460 - 4	FM1-C984-000	D10 - 22
FL3-6526-000	103 - 18	FM1-A153-000	530 -	FM1-C985-000	B11 - 26
FL3-6526-000	300 - 9	FM1-A214-000	130 - 24	FM1-C986-000	B11 - 27
FL3-6526-000	330 - 7	FM1-A225-000	103 - 8	FM1-C987-000	D10 - 23
FL3-6534-000	101 - 9	FM1-A226-000	260 -	FM1-D010-000	300 - 13
FL3-6538-000	130 - 17	FM1-A802-000	810 - 10	FM1-D941-000	130 - 21
FL3-6540-000	130 - 18	FM1-A807-000	103 - 14	FM1-D942-000	130 - 22
FL3-6544-000	130 - 18	FM1-A811-000	107 - 4	FM1-D943-000	T20 - 1
FL3-6545-000	101 - 10	FM1-A812-000	107 - 4	FM1-D944-000	T20 - 2
FM0-0002-000	621 -	FM1-A814-000	109 - 13	FM1-D945-000	T20 - 3
FM0-0006-000	622 -	FM1-A820-000	109 - 15	FM1-D946-000	T20 - 4
FM0-0007-000	270 -	FM1-A821-000	109 - 17	FM1-E996-000	900 - 3
FM0-0015-000	772 -	FM1-A823-000	460 - 2	FM1-F727-000	104 - 5
FM0-0017-000	108 - 9	FM1-A825-000	102 - 68	FM1-G152-000	D10 - 1
FM0-0018-000	290 -	FM1-A827-000	102 - 69	FM1-G905-000	T20 - 7
FM0-0019-000	300 -	FM1-A832-000	109 - 5	FM1-G964-000	900 - 1
FM0-0020-000	102 -	FM1-A836-000	107 - 3	FM1-G966-000	900 - 1
FM0-0021-000	350 -	FM1-A839-000	109 - 6	FM1-H163-000	D10 - 19
FM0-0029-000	310 -	FM1-A843-000	108 - 12	FM1-H164-000	D10 - 19
FM0-0030-000	310 - 28	FM1-A853-000	109 - 12	FM1-M894-000	900 - 1
FM0-0031-000	460 - 1	FM1-A854-000	109 - 16	FM3-2163-000	T20 - 6
FM0-0032-000	105 - 6	FM1-A855-000	109 - 9	FM4-0783-000	900 - 11
FM0-0034-000	280 -	FM1-B297-000	310 - 29	FM4-0834-000	T20 - 7
FM0-0035-000	104 - 1	FM1-B298-000	107 - 8	FM4-0835-000	T20 - 7
FM0-0036-000	104 - 2	FM1-B307-000	330 -	FM4-0838-010	T20 - 8
FM0-0037-000	103 - 11	FM1-B308-000	331 -	FM4-0856-010	T20 - 8

NUMERICAL INDEX

imageRUNNER ADVANCE C351/C350/C250 Series(Numerical Index)

PARTS NUMBER	FIGURE & KEY NO.	PARTS NUMBER	FIGURE & KEY NO.	PARTS NUMBER	FIGURE & KEY NO
FM4-9849-000	B11 -	FU2-0812-000	350 - 22	FU9-2005-000	B11 - 43
FM4-9850-000	B10 - 3	FU5-1748-000	B11 - 33	FU9-2007-000	101 - 6
FM4-9855-000	B11 - 28	FU6-1304-000	331 - 6	FU9-2007-000	B11 - 44
FM4-9856-000	B11 - 29	FU6-2873-000	D10 - 27	FU9-2008-000	B11 - 45
FM4-9857-000	B11 - 30	FU6-2999-000	B11 - 32	FU9-2009-000	B11 - 46
FM4-9858-000	B11 - 31	FU6-8646-000	101 - 8	FU9-2010-000	B11 - 47
FM4-9859-000	B12 - 4	FU7-2778-000	103 - 4	FU9-2011-000	B11 - 48
FM4-9860-000	B12 -	FU7-8085-000	D10 - 3	FU9-2015-000	B11 - 49
FM4-9862-000	B13 -	FU7-8086-000	D10 - 3	FU9-2016-000	B11 - 50
FM4-9866-000	B01 - 1	FU7-8087-000	D10 - 3	FU9-2017-000	B11 - 51
FM4-9905-000	105 - 5	FU7-8227-000	D10 - 3	FU9-2019-000	B11 - 52
FM4-9906-000	105 - 2	FU7-8228-000	D10 - 3	FU9-2020-000	B11 - 53
FM4-9907-000	105 - 4	FU7-8229-000	D10 - 3	FU9-2023-000	D10 - 29
FM4-9908-000	108 - 3	FU7-8230-000	D10 - 3	FU9-2027-000	771 - 4
FM4-9909-000	101 -	FU7-8231-000	D10 - 3	FU9-2068-000	102 - 58
FM4-9910-000	104 - 9	FU7-8521-000	100 - 24	FU9-2069-000	102 - 59
FM4-9911-000	104 - 8	FU8-0085-000	310 - 42	FU9-2070-000	102 - 60
FM4-9931-000	130 -	FU8-0128-000	B11 - 35	FU9-2071-000	102 - 61
FM4-9932-000	130 -	FU8-8257-000	900 - 7	FU9-2088-000	331 - 7
FM4-9933-000	130 -	FU9-0237-000	B11 - 37	FU9-2091-000	331 - 8
FM4-9939-000	130 -	FU9-0581-000	D10 - 28	FU9-2094-000	310 - 44
FM4-9940-000	130 -	FU9-0588-000	B13 - 5	FU9-2104-000	810 - 16
FM4-9941-000	130 -	FU9-0589-000	B11 - 38	FU9-2105-000	810 - 17
FM4-9961-000	108 - 2	FU9-0590-000	B11 - 39	FU9-2106-000	810 - 18
FS1-1205-000	310 - 31	FU9-0591-000	B11 - 40	FU9-2108-000	350 - 28
FU2-0192-000	102 - 45	FU9-0592-000	B11 - 41	FU9-2111-000	810 - 19
FU2-0197-000	102 - 46	FU9-0594-000	B11 - 42	FU9-2112-000	102 - 62
FU2-0198-000	102 - 47	FU9-0595-000	B13 - 6	FU9-2181-000	460 - 3
FU2-0230-000	810 - 12	FU9-0596-000	B13 - 7	FU9-2191-000	350 - 29
FU2-0234-000	310 - 32	FU9-0597-000	B13 - 8	FU9-2224-000	102 - 63
FU2-0236-000	310 - 49	FU9-0598-000	B13 - 9	NPN	001 -
FU2-0247-000	310 - 33	FU9-0610-000	810 - 13	NPN	100 -
FU2-0248-000	310 - 34	FU9-0611-000	810 - 14	NPN	103 -
FU2-0257-000	102 - 48	FU9-0612-000	810 - 15	NPN	104 -
FU2-0259-000	102 - 49	FU9-0613-000	350 - 23	NPN	105 -
FU2-0284-000	310 - 35	FU9-0662-000	102 - 51	NPN	106 -
FU2-0287-000	310 - 36	FU9-0663-000	102 - 52	NPN	107 -
FU2-0294-000	310 - 37	FU9-0663-000	332 - 6	NPN	108 -
FU2-0295-000	310 - 38	FU9-0665-000	102 - 53	NPN	109 -
FU2-0297-000	310 - 39	FU9-0666-000	102 - 54	NPN	190 -
FU2-0298-000	310 - 40	FU9-0666-000	332 - 7	NPN	191 -
FU2-0358-000	102 - 50	FU9-0667-000	102 - 55	NPN	192 -
FU2-0574-000	771 - 3	FU9-0668-000	102 - 56	NPN	332 -
FU2-0577-000	103 - 10	FU9-0670-000	102 - 57	NPN	460 -
FU2-0578-000	310 - 41	FU9-0672-000	332 - 8	NPN	771 -
FU2-0582-000	330 - 8	FU9-0675-000	310 - 43	NPN	900 -
FU2-0718-000	350 - 17	FU9-0675-000	350 - 24	NPN	930 -
FU2-0719-000	350 - 18	FU9-0676-000	350 - 25	NPN	B01 -
FU2-0720-000	350 - 19	FU9-0677-000	350 - 26	NPN	B10 -
FU2-0805-000	D10 - 2	FU9-0680-000	350 - 27	NPN	D10 -
FU2-0810-000	350 - 20	FU9-0692-000	330 - 9	NPN	T20 -
FU2-0811-000	350 - 21	FU9-0720-000	332 - 9	QK1-6441-000	001 - 8

NUMERICAL INDEX

imageRUNNER ADVANCE C351/C350/C250 Series(Numerical Index)

PARTS NUMBER	FIGURE & KEY NO.	PARTS NUMBER	FIGURE & KEY NO.	PARTS NUMBER	FIGURE & KEY NO
QK1-6443-000	001 - 9	XA9-1979-000	900 - 2		
QK1-6446-000	001 - 10	XD9-0290-000	300 - 18		
QK1-6450-000	001 - 11	XD9-0359-000	300 - 25		
QK1-6455-000	001 - 12	XF2-1611-830	B13 - 10		
RC1-9396-000	300 - 14	XG9-0783-000	102 - 44		
VS1-7177-002	102 - 64	XG9-0831-000	810 - 22		
VS1-7177-002	108 - 14	XH9-0149-000	900 - 8		
VS1-7177-002	109 - 7	XZ1-1301-005	900 - 9		
VS1-7177-002	810 - 23				
VS1-7177-002	B11 - 62				
VS1-7177-002	T20 - 5				
VS1-7177-003	102 - 67				
VS1-7177-003	103 - 21				
VS1-7177-003	108 - 15				
VS1-7177-003	109 - 8				
VS1-7177-003	192 - 2				
VS1-7177-004	108 - 16				
VS1-7177-004	D10 - 30				
VS1-7177-006	810 - 24				
VS1-7207-003	102 - 65				
VS1-7207-003	109 - 10				
VS1-7207-003	D10 - 26				
VS1-7207-004	B11 - 64				
VS1-7207-006	102 - 66				
VS1-7207-006	B11 - 63				
VS1-7440-002	103 - 20				
VS1-7440-003	191 - 2				
VS1-8412-017	109 - 11				
VS3-5083-004	108 - 13				
WC2-5803-000	103 - 3				
WG8-5783-000	810 - 21				
WG8-5935-000	102 - 39				
WG8-5935-000	109 - 4				
WG8-5935-000	290 - 2				
WG8-5935-000	310 - 45				
WG8-5935-000	331 - 9				
WG8-5935-000	621 - 1				
WG8-5935-000	810 - 20				
WG8-5935-000	B11 - 54				
WG8-5935-000	D10 - 31				
WP2-5410-000	108 - 10				
WT8-5076-000	T20 - 9				
XA9-1386-000	103 - 7				
XA9-1386-000	104 - 6				
XA9-1386-000	105 - 8				
XA9-1386-000	106 - 7				
XA9-1386-000	107 - 10				
XA9-1386-000	108 - 11				
XA9-1386-000	109 - 14				
XA9-1386-000	D10 - 16				
XA9-1449-000	D10 - 21				
XA9-1523-000	300 - 17				

imageRUNNER ADVANCE C351/C350/ C250 Series(Parts Catalog)

imageRUNNER ADVANCE C351iF

230V EUR	F16-2695-000	QNV	FAX model
-----------------	---------------------	------------	-----------

imageRUNNER ADVANCE C350iF

120V US,CA,LTN	F16-2631-000	QNN	FAX model
---------------------------	---------------------	------------	-----------

230V LTN	F16-2671-000	QVB	FAX model
-----------------	---------------------	------------	-----------

imageRUNNER ADVANCE C350i

230V AU,SG,HK	F16-2641-000	QNX	
----------------------	---------------------	------------	--

230V EUR	F16-2691-000	QNU	
-----------------	---------------------	------------	--

imageRUNNER ADVANCE C250iF

120V US,CA,LTN	F16-2632-000	QNR	FAX model
---------------------------	---------------------	------------	-----------

230V LTN	F16-2672-000	QZH	FAX model
-----------------	---------------------	------------	-----------

imageRUNNER ADVANCE C250i

230V AU,SG,HK	F16-2642-000	QPA	
----------------------	---------------------	------------	--

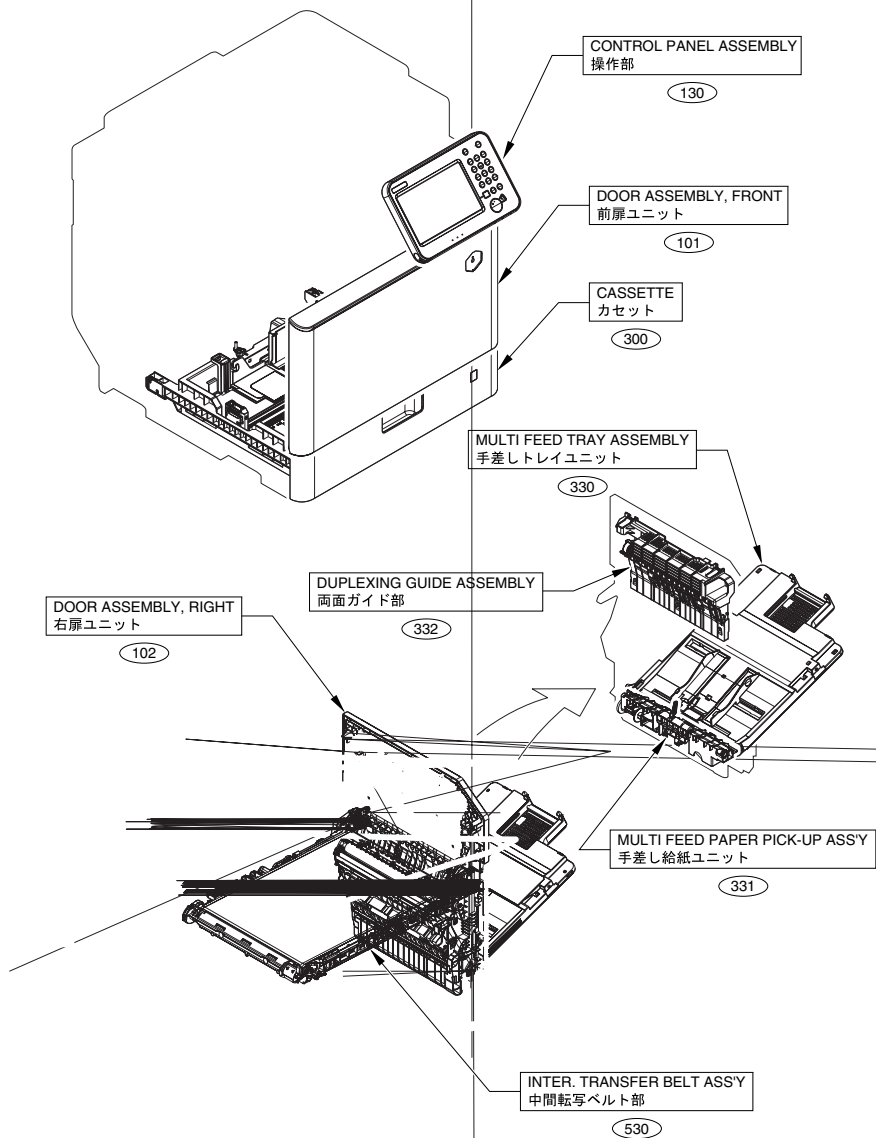
230V EUR	F16-2692-000	QNW	
-----------------	---------------------	------------	--

Contents

A1	ASSEMBLY LOCATION DIAGRAM	2-1
A2	OPTION PARTS CATALOG LIST	2-6
001	ACCESSORIES	2-7
100	EXTERNAL COVERS, PANELS, ETC.	2-9
101	DOOR ASSEMBLY, FRONT	2-11
102	DOOR ASSEMBLY, RIGHT	2-13
103	INTERNAL COMPONENTS 1	2-18
104	INTERNAL COMPONENTS 2	2-20
105	INTERNAL COMPONENTS 3	2-22
106	INTERNAL COMPONENTS 4	2-24
107	INTERNAL COMPONENTS 5	2-26
108	MACHINE REAR PLATE 1	2-28
109	MACHINE REAR PLATE 2	2-30
130	CONTROL PANEL ASSEMBLY	2-32
190	CARTRIDGE AIR INTAKE FAN ASS'Y	2-35
191	DELIVERY COOLING FAN ASSEMBLY	2-36
192	POWER SUPPLY FAN ASSEMBLY	2-37
250	MAIN DRIVE ASSEMBLY	2-38
260	PAPER PICK-UP DRIVE ASSEMBLY	2-39
270	BOTTLE DRIVE ASSEMBLY	2-40
280	FIXING DRIVE ASSEMBLY	2-41
290	PICK-UP LIFTER DRIVE ASS'Y	2-42
300	CASSETTE	2-43
310	RESIST/PAPER PICK-UP ASS'Y	2-46
330	MULTI FEED TRAY ASSEMBLY	2-49
331	MULTI FEED PAPER PICK-UP ASS'Y	2-51
332	DUPLEXING GUIDE ASSEMBLY	2-52
350	PAPER DELIVERY/REVERSE ASS'Y	2-53
460	LASER SCANNER ASSEMBLY	2-56
530	INTER. TRANSFER BELT ASS'Y	2-57
621	BOTTLE MOUNT ASSEMBLY	2-58
622	HOPPER ASSEMBLY	2-59
771	INTERNAL COVER ASSEMBLY	2-60
772	CONTAINER, WASTE TONER, WT-201	2-61
810	FIXING ASSEMBLY, FX-201	2-62
900	CONTROLLER BOX ASSEMBLY	2-64
910	POWER SUPPLY ASSEMBLY	2-66
930	DC CONTROLLER PCB ASSEMBLY	2-67
B01	ADF MAINTENANCE KIT	2-68
B10	READER/ADF ASSEMBLY	2-69
B11	AUTO DOCUMENT FEEDER ASSEMBLY	2-71
B12	FEEDER COVER ASSEMBLY	2-76
B13	PAPER FEED DRIVE ASSEMBLY	2-78
D10	READER ASSEMBLY	2-79
T20	FAX ASSEMBLY (FAX model)	2-82

T21	SPEAKER (FAX model)	2-84
ZZA	MECHANICAL STANDARD PARTS (HOW TO USE)	2-85
ZZB	MECHANICAL STANDARD PARTS (SCREWS).....	2-86
ZZC	MECHANICAL STANDARD PARTS (BOLTS).....	2-93
ZZD	MECHANICAL STANDARD PARTS (NUTS).....	2-94
ZZE	MECHANICAL STANDARD PARTS (RETAINING RINGS)	2-95

FIGURE A1 ASSEMBLY LOCATION DIAGRAM



FIXING ASSEMBLY, FX-201
定着部 (FX-201)

810

LASER SCANNER ASSEMBLY
レーザー スキャナー部

460

CARTRIDGE AIR INTAKE FAN ASS'Y
カートリッジ吸気ファン部

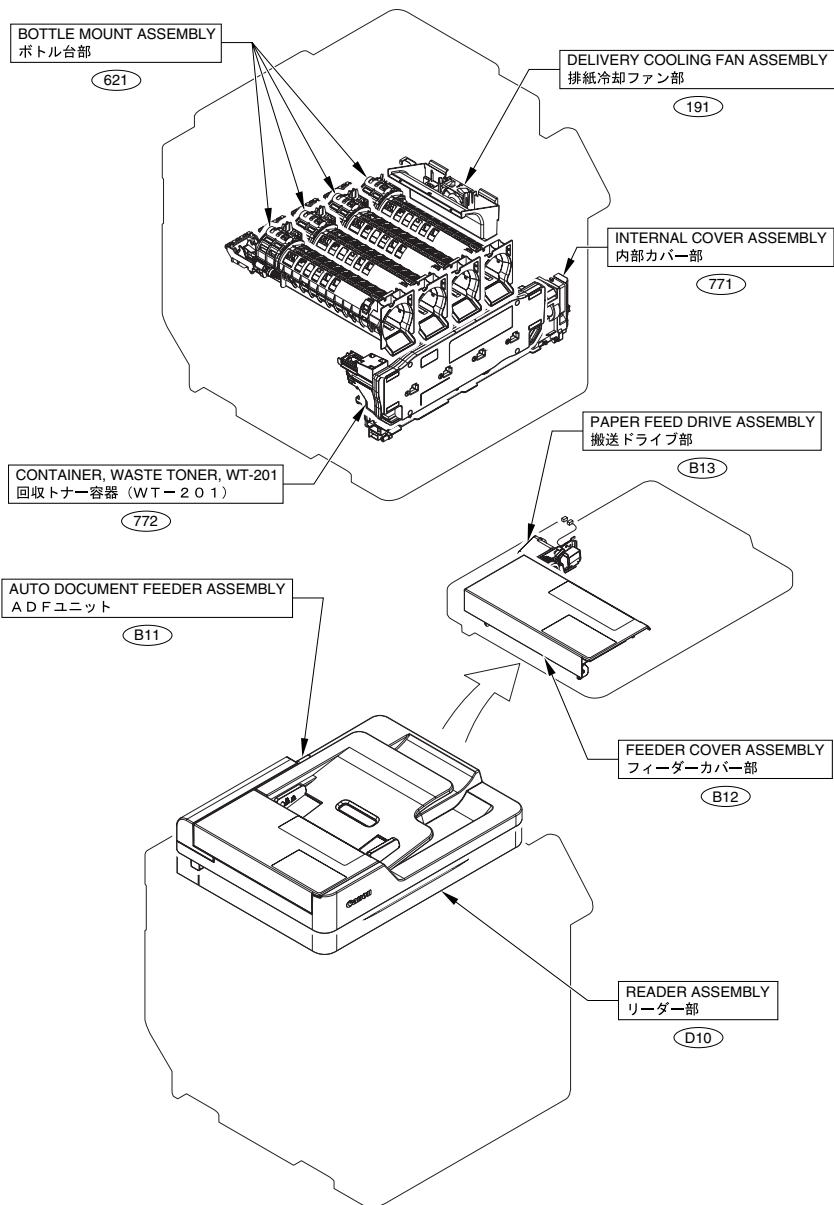
190

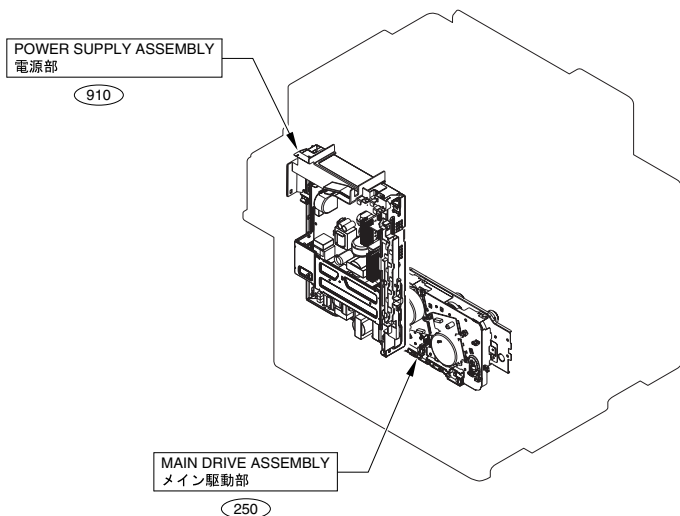
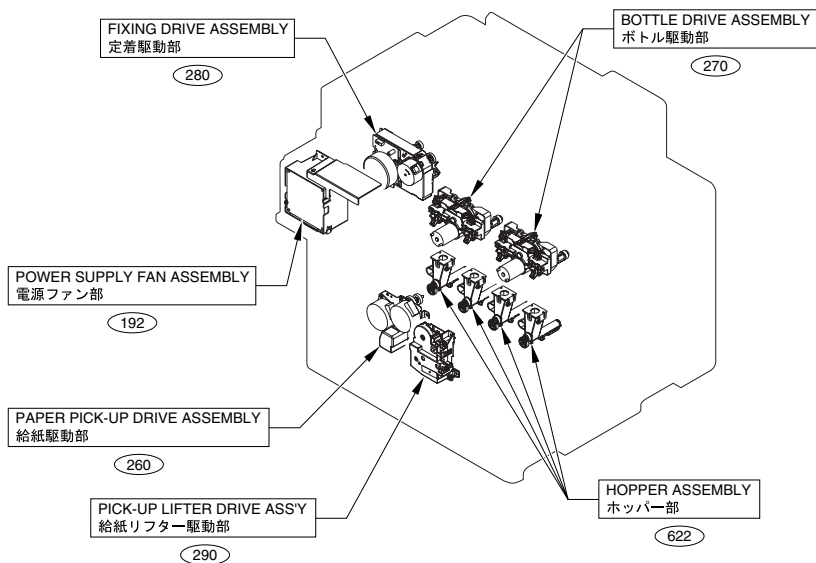
PAPER DELIVERY/REVERSE ASS'Y
排紙/反転部

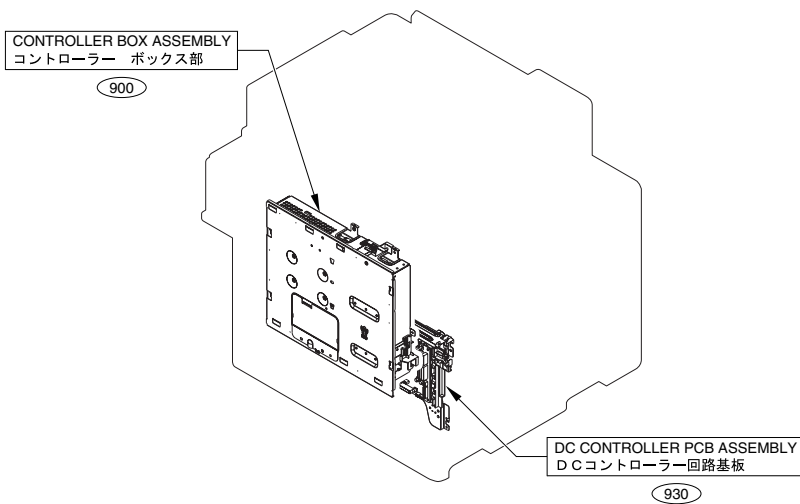
350

RESIST/PAPER PICK-UP ASS'Y
レジスト 給紙部

310







FAX model

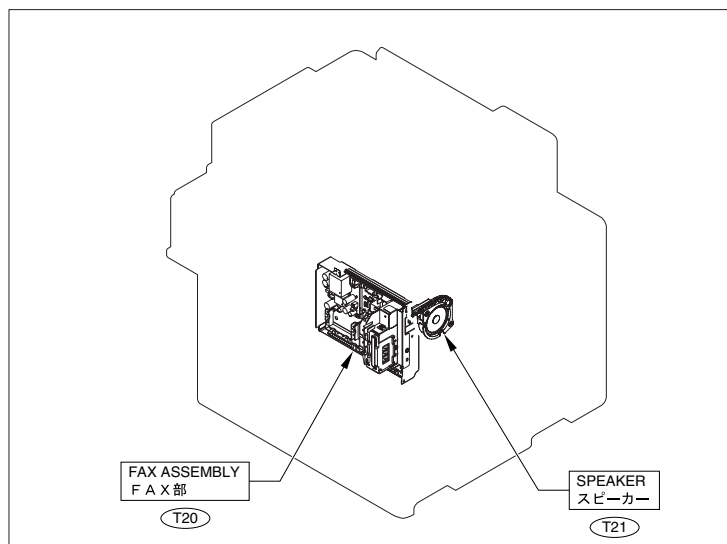


FIGURE A2

OPTION PARTS CATALOG LIST

This is the table of the machine's options whose parts catalog is issued.
 本機のオプションで、パーツカタログが発行されている機種の一覧である。

No.	Model Name(English)	Model Name(Japanese)
1	Cassette Feeding Unit-AG1/AH1	1段カセットペディスタル・AG1／3段カセットペディスタル・AH1
2	FL Cassette-AT1	(日本仕向けなし)
3	Staple Finisher-S1	(日本仕向けなし)
4	Cassette Heater Unit-39	(日本仕向けなし)
5	Super G3 FAX Board-AN1	(日本仕向けなし)
6	Serial Interface kit-K1/K2	シリアルインターフェースキット・K1／K2
7	HDD Data Encryption Kit-C6	HDDデータ暗号化ミラーリングキット・C6
8	Copy Card Reader Attachment-B2/B3/B4	コピーカードリーダー取付けキット・B2／B3／B4
9	ADF Access Handle-A1	ADFアクセスハンドル・A1
10	Copy Card Reader-F1	コピーカードリーダー・F1
11	(JAPAN ONLY)	ハンドセット・J1
12	Document Scan Lock Kit-B1	イメージ解析ボード・B1
13	Copy Control Interface Kit-A1	コントロールインターフェースキット・A1
14	IC Card Reader Box-A1	ICカードリーダーボックス・A1

FIGURE 001 ACCESSORIES

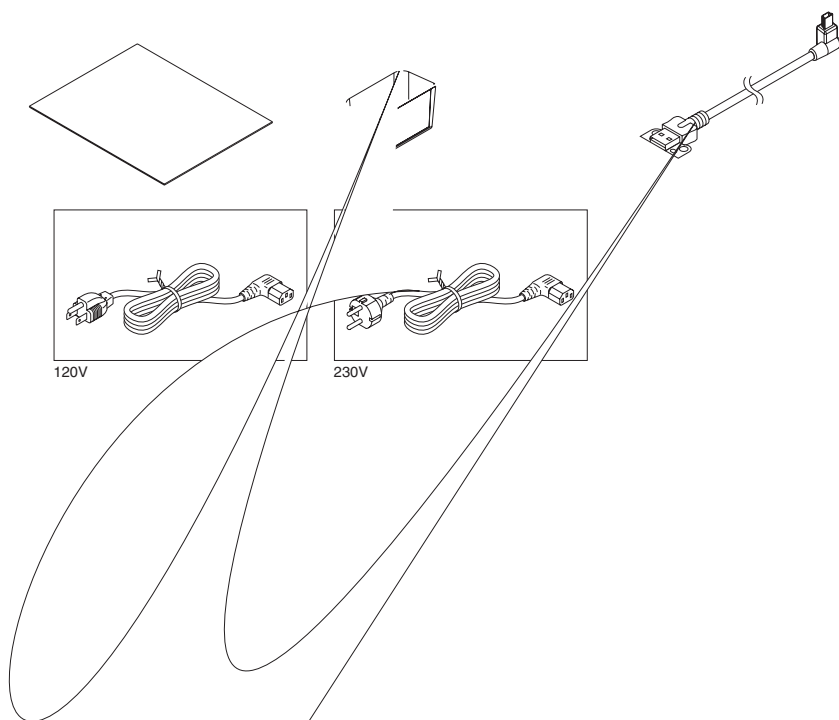


FIGURE & KEY NO.	PARTS NUMBER	R A N K	Q'TY	DESCRIPTION	SERIAL NUMBER/ REMARKS	S V C
Fig.001	NPN		RF	ACCESSORIES		
1	FE3-4473-000		1	CLOTH, CLEANING		
2	FE3-4464-000		1	BOX, CLEANING CLOTH STOCK		
3	FE3-4465-000		1	TAPE, DUPLEXING		
4	FK4-0915-000		1	CABLE, USB		
5	FK2-9571-000		1	CORD, POWER	230V	
5	FK2-9904-000		1	CORD, POWER	120V	
6	FK4-1739-000		1	CD-ROM, SOFTWARE FOR UFR II	AU,SG,HK English	
6	FK4-1740-000		1	CD-ROM, SOFTWARE FOR UFR II	EUR English,French,Italian,German,Spanish	
6	FK4-1742-000		1	CD-ROM, SOFTWARE FOR PCL	AU,SG,HK English	
6	FK4-1743-000		1	CD-ROM, SOFTWARE FOR PCL	EUR English,French,Italian,German,Spanish	
6	FK4-1744-000		1	CD-ROM, SOFTWARE FOR PS	AU,SG,HK English	
6	FK4-1745-000		1	CD-ROM, SOFTWARE FOR PS	EUR English,French,Italian,German,Spanish	
6	FK4-1748-000		1	CD-ROM,SOFTWARE FOR FAX DRIVER	C351iF EUR English,French,Italian,German,Spanish	
7	FK2-5275-000		1	CORD, MODULAR		
8	QK1-6441-000		1	CORD, MODULER	EUR	
9	QK1-6443-000		1	PLUG	DE	
10	QK1-6446-000		1	PLUG	FR	
11	QK1-6450-000		1	PLUG	GB	
12	QK1-6455-000		1	CORD, MODULAR	LTN	

FIGURE 100
EXTERNAL COVERS, PANELS, ETC.

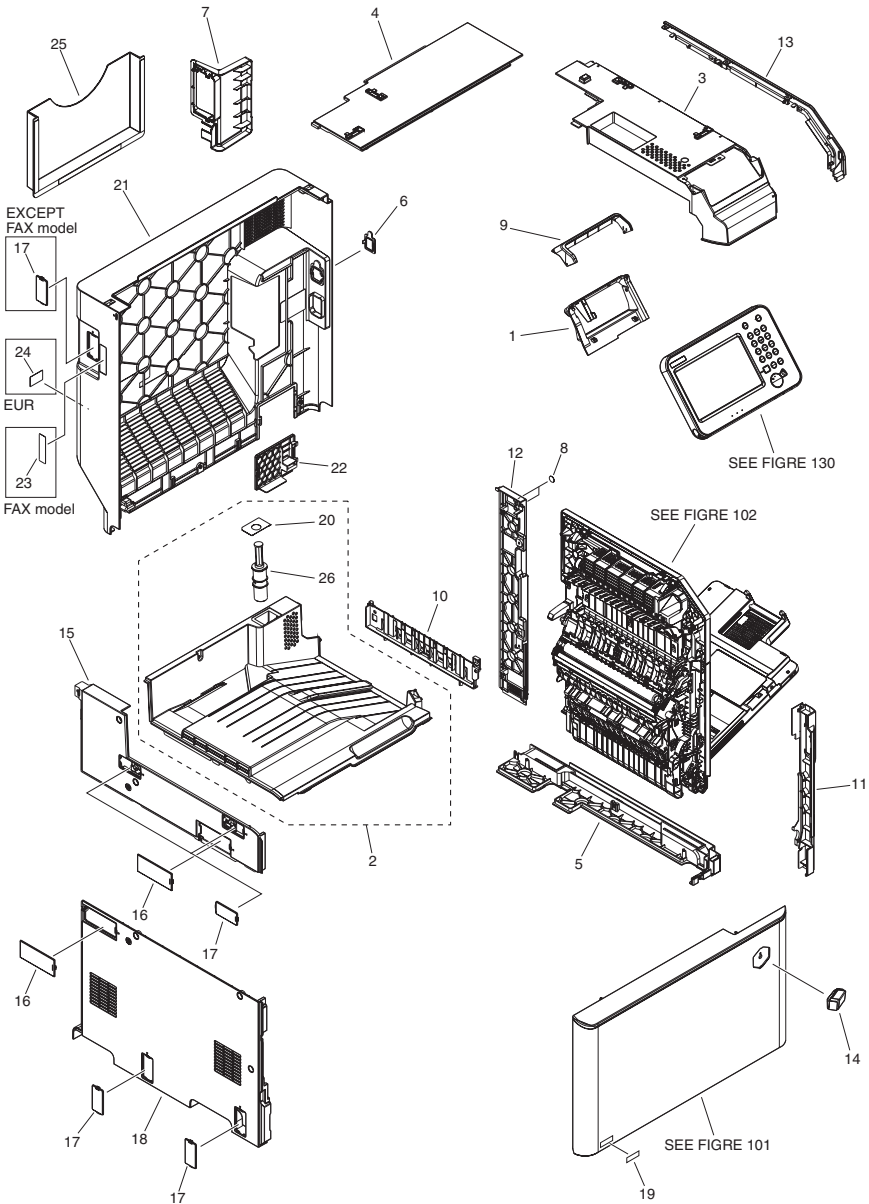
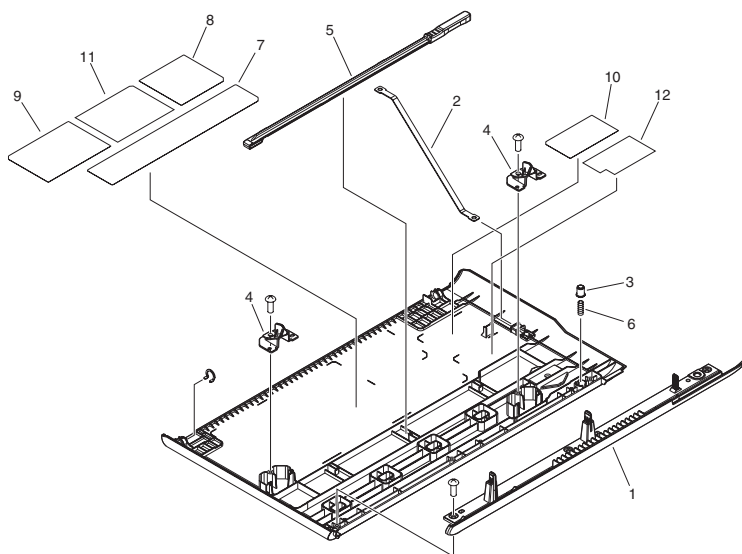


FIGURE & KEY NO.	PARTS NUMBER	R A N K	Q'TY	DESCRIPTION	SERIAL NUMBER/ REMARKS	S V C
Fig.100	NPN		RF	EXTERNAL COVERS, PANELS, ETC.		
1	FM0-0058-000		1	COVER, CONTROL PANEL ASSEMBLY		
2	FM1-C319-000		1	TRAY, PAPER DELIVERY		
3	FM1-C320-000		1	COVER, UPPER		
4	FM1-C321-000		1	COVER, REAR UPPER		
5	FC0-7213-000		1	COVER, RIGHT LOWER		
6	FC8-4137-000		1	COVER, ENV. HEATER SWITCH		
7	FC0-7575-000		1	COVER, REAR, 2		
8	FC9-7297-000		4	SEAL, BLANKING		
9	FE2-1566-000		1	PANEL, CONTROL HINGE, REAR		
10	FE3-3748-000		1	COVER, PAPER DELIVERY		
11	FL3-6516-000		1	COVER, RIGHT FRONT		
12	FL3-6518-000		1	COVER, RIGHT REAR		
13	FL3-6517-000		1	COVER, RIGHT UPPER		
14	FL3-1185-000		1	EMBLEM		
15	FC0-7567-000		1	COVER, UPPER, LEFT		
16	FC0-7570-000		2	COVER, DEVICE PORT		
17	FC8-8346-000		5	COVER, FAX CONNECTOR		
18	FL0-3939-000		1	COVER, LEFT LOWER		
19	FC0-7790-000		1	LABEL, TONER	AU,SG,HK	
19	FC0-7791-000		1	LABEL, TONER	EUR	
19	FC0-7792-000		1	LABEL, TONER	US,CA,LTN	
20	FL0-1008-000		1	SHEET, PAPER DELIVERY TRAY, 2		
21	FC0-7171-000		1	COVER, REAR, 1		
22	FC0-7685-000		1	COVER, HEATER, ENVIRONMENT		
23	FC0-7730-000		1	LABEL, MODULAR	FAX model EXCEPT C351iF	
23	FC0-7731-000		1	LABEL, MODULAR	FAX model C351iF	
24	FU7-8521-000		1	LABEL, GROUNDING CAUTION	EUR	
25	FC9-9069-000		1	HOLDER, SERVICE BOOK		
26	FC7-6142-000		1	DAMPER UNIT, AIR		

FIGURE 101 DOOR ASSEMBLY, FRONT



NOTE 1 : This assembly does not include the parts shown with key No. 2, 9, 10, 11 and 12.

NOTE 2 : Several kinds of labels are attached on the board for the parts of Key No. 11. The same parts as Fig-Key No. 103-6.

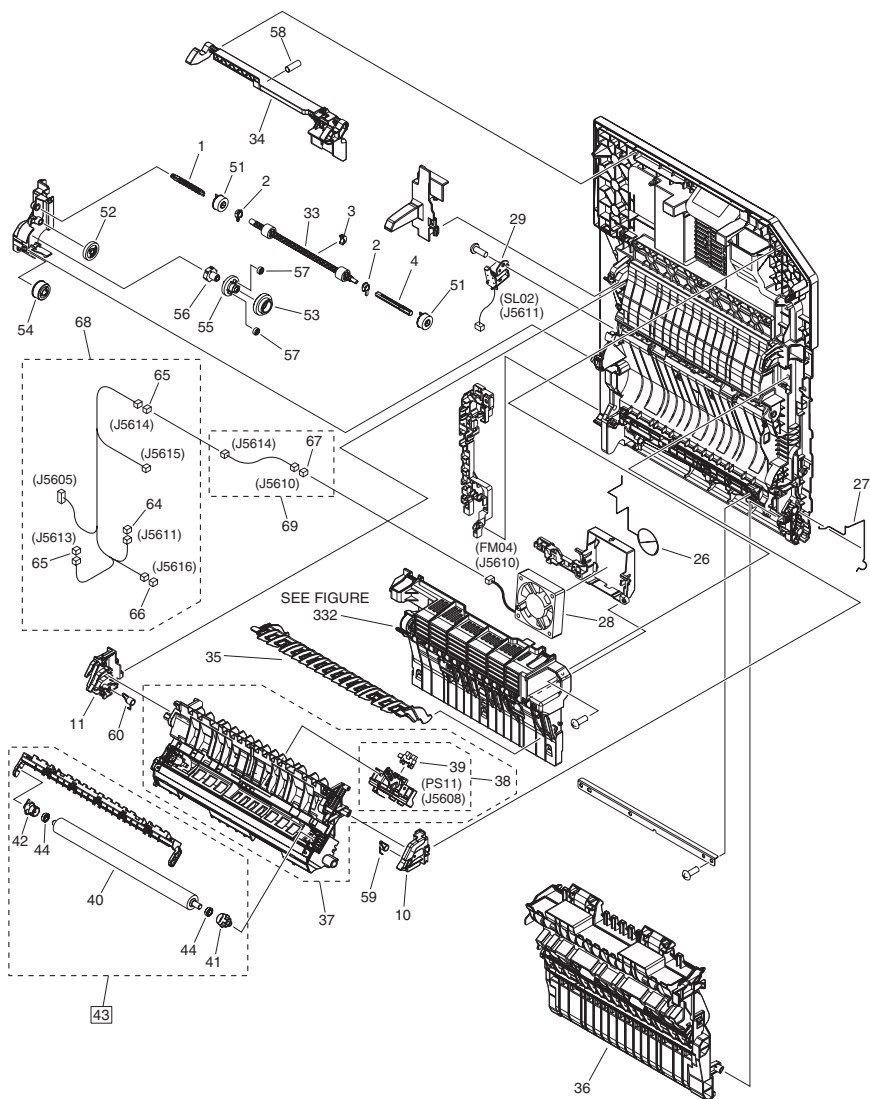
注 1 : このユニットにKey No. 2, 9, 10, 11, 12の部品は含まれません。

注 2 : Key No. 11の部品は台紙に数種類のラベルが付いています。Fig-Key No. 103-6と同一部品です。

FIGURE & KEY NO.	PARTS NUMBER	R A N K	Q'TY	DESCRIPTION	SERIAL NUMBER/ REMARKS	S V C
Fig.101	FM4-9909-000		1	DOOR ASSEMBLY, FRONT		
1	FL3-6519-000		1	COVER, FRONT, UPPER		
2	FC0-7572-000		1	BAND, FRONT COVER, RIGHT	SEE NOTE	
3	FC0-7734-000		1	PIN, FRONT		
4	FC8-8205-000		2	HOOK, COVER, FRONT		
5	FL0-0237-000		1	ROD, GLASS CLEANING		
6	FU9-2007-000		1	SPRING, COMPRESSION		
7	FC0-5846-000		1	LABEL, CLN ROD OPERATION		
8	FU6-8646-000		1	LABEL, LASER CAUTION		
9	FL3-6534-000		1	LABEL, SERVICE	SEE NOTE	
10	FL3-6545-000		1	LABEL, SERVICE	SEE NOTE	
11	FC0-7702-000		1	LABEL, TONER TYPE	SEE NOTE EUR	
11	FC0-7701-000		1	LABEL, TONER TYPE	SEE NOTE AU,SG,HK	
11	FC0-7703-000		1	LABEL, TONER TYPE	SEE NOTE US,CA,LTN	
12	FC0-7807-000		1	LABEL,EXCHANGE OPERATOR,BOTTLE	SEE NOTE	

FIGURE 102

DOOR ASSEMBLY, RIGHT



NOTE : This assembly includes the assemblies shown in Figure 330 and 331.
 注 : このユニットはFigure 330, 331のユニットを含みます。

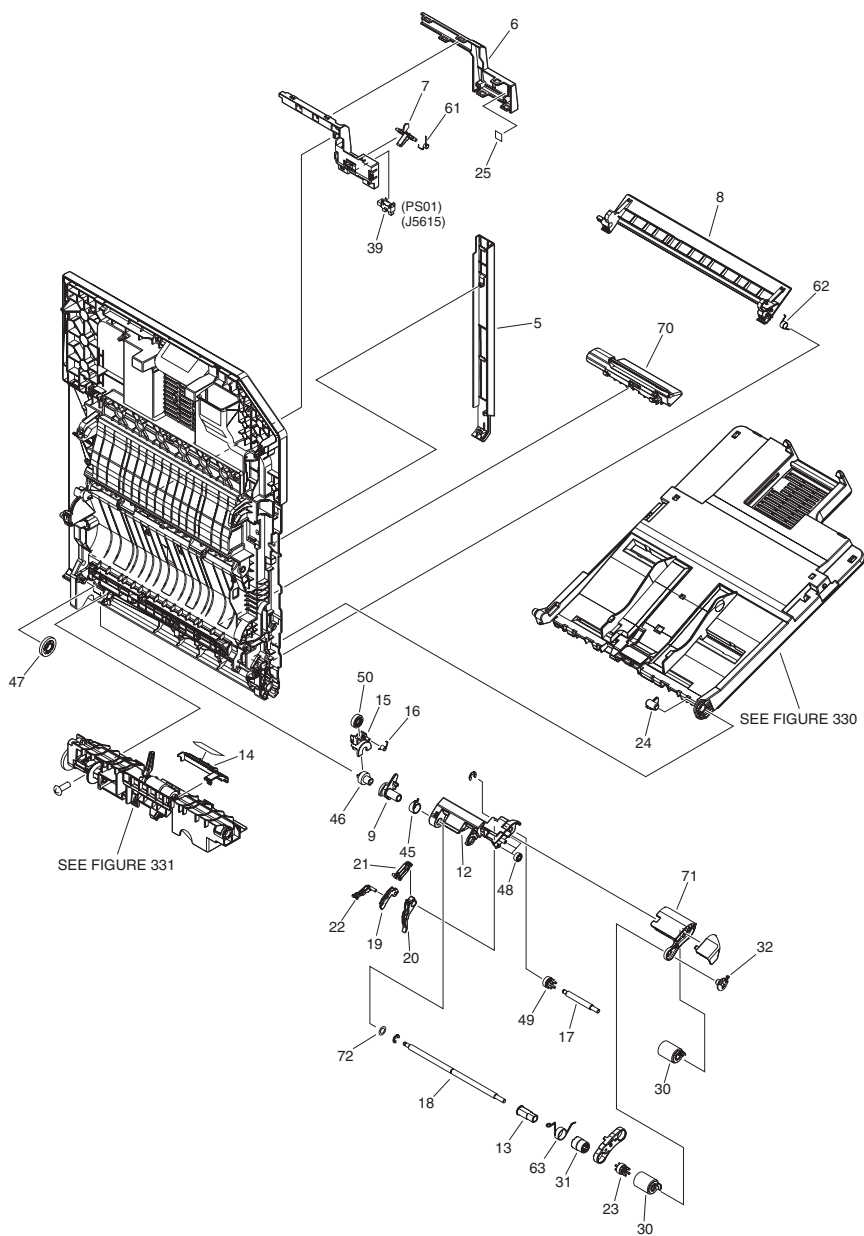


FIGURE & KEY NO.	PARTS NUMBER	R A N K	Q'TY	DESCRIPTION	SERIAL NUMBER/ REMARKS	S V C
Fig.102	FM0-0020-000		1	DOOR ASSEMBLY, RIGHT	SEE NOTE	
1	FC0-5875-000		1	SHAFT		
2	FC0-5876-000		2	BUSHING		
3	FC0-5888-000		1	BUSHING		
4	FC0-5935-000		1	SHAFT		
5	FC0-5938-000		1	PANEL, RIGHT DOOR, FRONT		
6	FC0-5941-000		1	PANEL, CABLE		
7	FC0-5943-000		1	FLAG, DUPLEXING SENSOR		
8	FC0-6612-000		1	COVER, BLANKING		
9	FC0-7446-000		1	LINK, RELEASE		
10	FC0-7535-000		1	GUIDE, LOCK, FRONT		
11	FC0-7536-000		1	GUIDE, LOCK, REAR		
12	FE3-1547-000		1	SUPPORT, ROLLER		
13	FE3-1617-000		1	BUSHING		
14	FE3-1641-000		1	COVER, PAPER FEED ROLLER		
15	FE3-1760-000		1	HOLDER, MULTI FEED SWING		
16	FE3-2409-000		1	SPRING, TORSION		
17	FE3-3585-000		1	SHAFT		
18	FE3-3594-000		1	SHAFT		
19	FE3-4759-000		1	GUIDE, SHUTTER LINK		
20	FE3-4760-000		1	SHUTTER, PAPER PICK-UP		
21	FE3-4761-000		1	LOCK, SHUTTER		
22	FE3-4762-000		1	LEVER, SHUTTER LINK		
23	FE3-4764-000		1	GEAR, 18T		
24	FE3-4765-000		1	BOSS, TRAY		
25	FL0-1010-000		1	SHEET, FLAG SILENCER		
26	FE3-6116-000		1	CABLE, FAN GROUNDING, RIGHT		
27	FE3-6117-000		1	CABLE, GROUNDING, RIGHT		
28	FK2-0472-010		1	FAN	FM04	
29	FK4-0725-000		1	SOLENOID	SL02	
30	FL0-1011-000		2	ROLLER, PAPER PICK-UP&FEED		
31	FL0-1361-000		1	CLUTCH, ONE-WAY		

FIGURE & KEY NO.	PARTS NUMBER	R A N K	Q'TY	DESCRIPTION	SERIAL NUMBER/ REMARKS	S V C
32	FE3-5654-000		1	BUSHING	PS01,PS11	
33	FL3-6443-000		1	ROLLER, DUPLEXING FEED		
34	FM1-B549-000		1	DOOR HOOK ASSEMBLY, RIGHT		
35	FM1-B552-000		1	DUPLEXING INNER GUIDE ASSEMBLY	[DP]	
36	FM1-B553-000		1	RIGHT INNER DOOR ASSEMBLY		
37	FM1-B554-000		1	2ND TRNSFR. OUTER GUIDE ASSY		
38	FM1-B555-000		1	SENSOR UNIT, LOOP		
39	WG8-5935-000		2	IC, PHOTO INTERRUPTER		
40	FC0-5848-000		1	ROLLER, 2ND TRNSFR. OUTER		
41	FC0-5861-000		1	HOLDER, BUSHING, FRONT		
42	FC0-5862-000		1	HOLDER, BUSHING, REAR		
43	FM1-C318-000		1	2ND TRNSFR. OUTER ROLLER ASSY		
44	XG9-0783-000		2	BEARING, BALL, L-1060ZZ		
45	FU2-0192-000		1	SPRING, TORSION		
46	FU2-0197-000		1	GEAR, 16T		
47	FU2-0198-000		1	GEAR, 27T		
48	FU2-0257-000		3	GEAR, 14T		
49	FU2-0259-000		1	GEAR, 18T		
50	FU2-0358-000		1	GEAR, 17T		
51	FU9-0662-000		2	GEAR, 19T		
52	FU9-0663-000		1	GEAR, 25T		
53	FU9-0665-000		1	GEAR, 42T/21T		
54	FU9-0666-000		1	GEAR, 23T		
55	FU9-0667-000		1	GEAR, 28T		
56	FU9-0668-000		1	GEAR, 14T		
57	FU9-0670-000		2	GEAR, 14T		
58	FU9-2068-000		1	SPRING, COMPRESSION		
59	FU9-2069-000		1	SPRING, TORSION		
60	FU9-2070-000		1	SPRING, TORSION		
61	FU9-2071-000		1	SPRING, TORSION		
62	FU9-2112-000		1	SPRING, TORSION		
63	FU9-2224-000		1	SPRING, TORSION		

FIGURE & KEY NO.	PARTS NUMBER	R A N K	Q'TY	DESCRIPTION	SERIAL NUMBER/ REMARKS	S V C
64	VS1-7177-002		1	CONNECTOR, SNAP TIGHT, BK		
65	VS1-7207-003		2	CONNECTOR, SNAP TIGHT, BK		
66	VS1-7207-006		1	CONNECTOR, SNAP TIGHT, BK		
67	VS1-7177-003		1	CONNECTOR, SNAP TIGHT, BK		
68	FM1-A825-000		1	CABLE, DOOR, RIGHT		
69	FM1-A827-000		1	CABLE, DOOR FAN, RIGHT		
70	FC0-6614-000		1	COVER, ROLLER		
71	FE3-0389-000		1	COVER, ROLLER		
72	FE4-4660-000		1	SHEET, LIMIT		

FIGURE 103
INTERNAL COMPONENTS 1

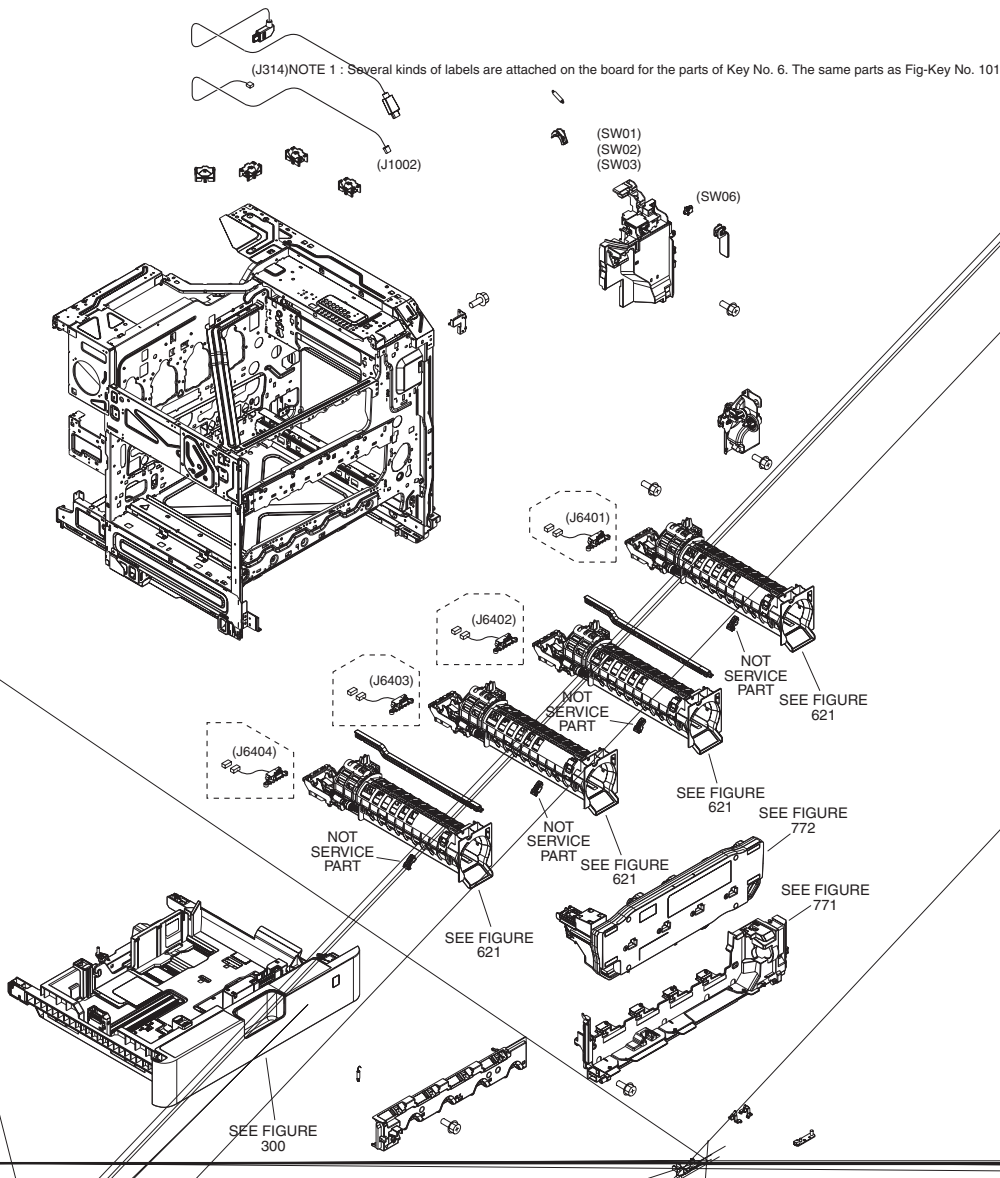


FIGURE & KEY NO.	PARTS NUMBER	R A N K	Q'TY	DESCRIPTION	SERIAL NUMBER/ REMARKS	S V C
Fig.103	NPN		RF	INTERNAL COMPONENTS 1		
1	FM0-0049-000		1	COVER, INNER, FRONT, RIGHT	SW01,SW02,SW03	
2	FC0-7172-000		1	COVER, MAIN SWITCH		
3	WC2-5803-000		1	SWITCH	SW06	
4	FU7-2778-000		1	SPRING, TENSION		
5	FE2-2086-000		1	LEVER, TOGGLE		
6	FC0-7702-000		1	LABEL, TONER TYPE	SEE NOTE EUR	
6	FC0-7701-000		1	LABEL, TONER TYPE	SEE NOTE AU,SG,HK	
6	FC0-7703-000		1	LABEL, TONER TYPE	SEE NOTE US,CA,LTN	
7	XA9-1386-000		AR	SCREW,RS,M3X8		
8	FM1-A225-000		1	REGISTRATION DRIVE ASS'Y	M07	
9	FM1-C981-000		1	WASTE TONER SENSOR PCB ASS'Y		
10	FU2-0577-000		4	SPRING, GROUNDING		
11	FM0-0037-000		1	TONER INTER. EJECT ASS'Y		
12	FC0-5801-000		2	ARM, BOTTLE LOCK		
13	FK4-0914-000		1	CABLE, CONTROL PANEL		
14	FM1-A807-000		1	CABLE, PANEL POWER SUPPLY		
15	FM0-0065-000		1	CONNECTOR, NEW BOTTLE DET., BK		
16	FM0-0075-000		3	CONNECTOR, NEW BOTTLE DET., CL		
17	FE3-8688-000		1	LABEL, PAPER SIZE	SEE NOTE	
18	FL3-6526-000		1	SHEET, SEPARATION		
19	FE3-9943-000		1	LABEL, MOUNTING INSTRUCTION		
20	VS1-7440-002		3	CONNECTOR, SNAP TIGHT		
21	VS1-7177-003		1	CONNECTOR, SNAP TIGHT, BK		
22	FL0-3261-000		1	PLATE, LIFTING		
23	FE4-1123-000		1	BUSHING		
24	FC0-7486-000		1	PLATE, USB		

FIGURE 104
INTERNAL COMPONENTS 2

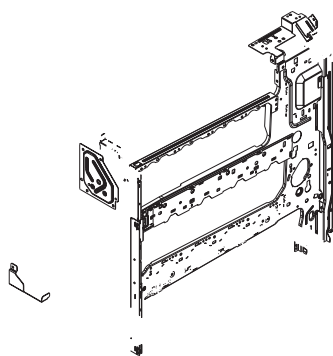


FIGURE & KEY NO.	PARTS NUMBER	R A N K	Q'TY	DESCRIPTION	SERIAL NUMBER/ REMARKS	S V C
Fig.104	NPN		RF	INTERNAL COMPONENTS 2	SL03	
1	FM0-0035-000		1	RAIL, I.T.B., FRONT		
2	FM0-0036-000		1	RAIL, I.T.B., REAR		
3	FM0-0074-000		2	HOLDER, FIXING LOCK		
4	FC0-6502-000		1	RAIL, PROCESS CARTRIDGE, RIGHT		
5	FM1-F727-000		1	REGISTRATION SENSOR ASSEMBLY		
6	XA9-1386-000		1	SCREW,RS,M3X8		
7	FL0-3763-000		1	SHEET, PROTECTION		
8	FM4-9911-000		1	HOLDER, FIXING, REAR		
9	FM4-9910-000		1	HOLDER, FIXING, FRONT		
10	FM1-C347-000		1	PLATE ASSEMBLY		
11	FM1-C324-000		1	CONNECTING CABLE ASSEMBLY		
12	FM1-B572-000		1	FIXING GROUNDING ASSEMBLY		

FIGURE 105
INTERNAL COMPONENTS 3

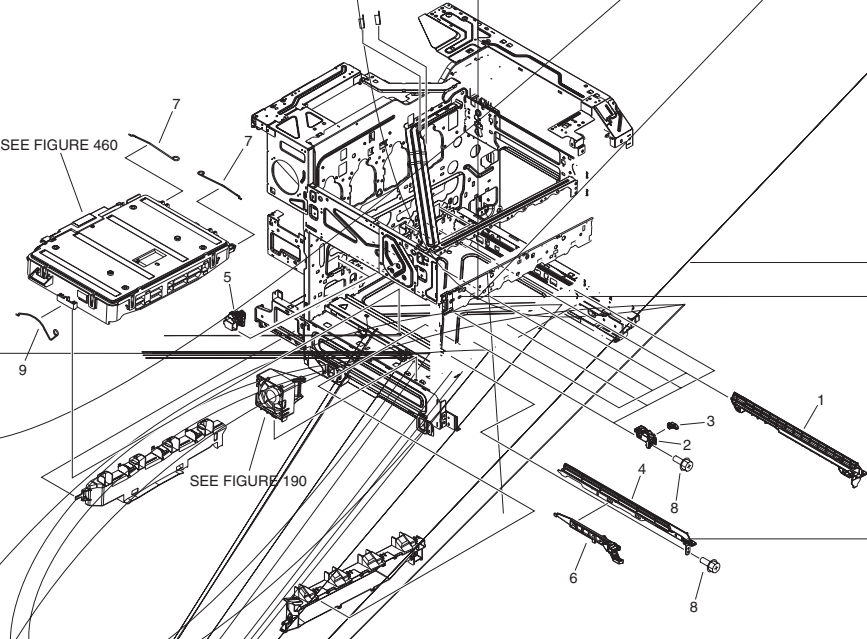


FIGURE & KEY NO.	PARTS NUMBER	R A N K	Q'TY	DESCRIPTION	SERIAL NUMBER/ REMARKS	S V C
Fig.105	NPN		RF	INTERNAL COMPONENTS 3		
1	FC0-7188-000		3	RAIL, PAPER PICK-UP, MIDDLE		
2	FM4-9906-000		4	BLOCK, PROCESS PRESSURE, FRONT		
3	FC0-7728-000		4	STOPPER, PROCESS UNIT, FRONT		
4	FM4-9907-000		1	RAIL ASSEMBLY, LEFT		
5	FM4-9905-000		4	LEVER, PROCESS KIT, REAR		
6	FM0-0032-000		1	SHUTTER LINK ASSEMBLY		
7	FC9-8607-000		2	SPRING		
8	XA9-1386-000		AR	SCREW,RS,M3X8		
9	FC0-7068-000		1	SPRING		

FIGURE 106
INTERNAL COMPONENTS 4

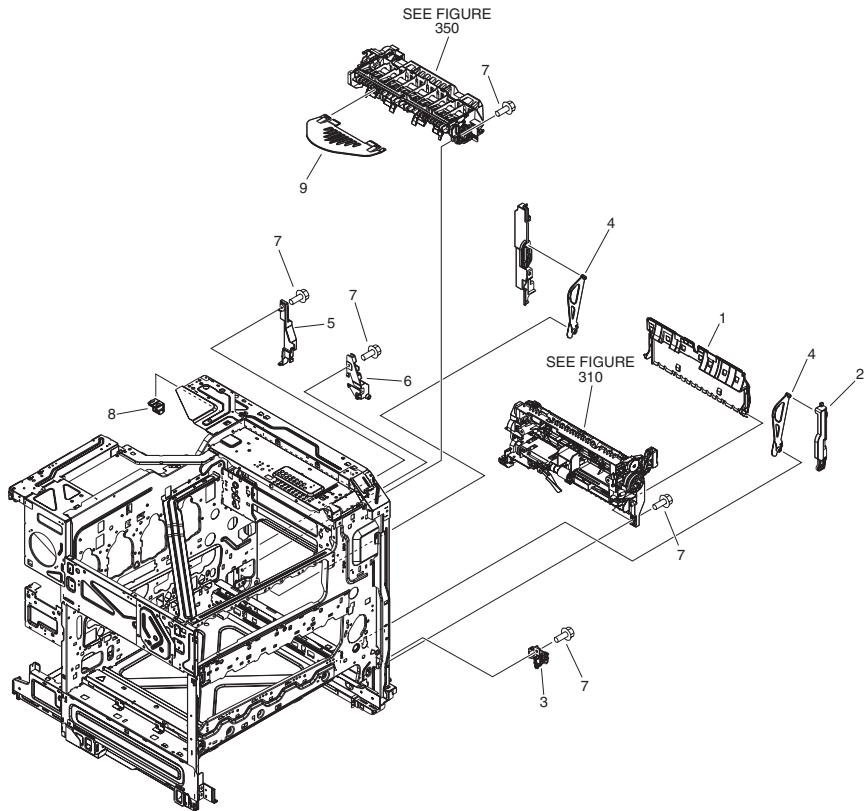


FIGURE & KEY NO.	PARTS NUMBER	R A N K	Q'TY	DESCRIPTION	SERIAL NUMBER/ REMARKS	S V C
Fig.106	NPN		RF	INTERNAL COMPONENTS 4		
1	FC0-7048-000		1	GUIDE, SWING		
2	FC0-5942-000		1	GUIDE, STOPPER, RIGHT DOOR		
3	FM1-C348-000		1	HINGE, EXTERNAL, FRONT		
4	FC0-5912-000		2	LEVER, STOPPER, RIGHT		
5	FC0-7708-000		1	COVER, DOOR CONNECTOR, RIGHT		
6	FC0-5929-000		1	HINGE, OUTER COVER, REAR		
7	XA9-1386-000		AR	SCREW,RS,M3X8		
8	FC0-5918-000		2	BASE, HOOK, RIGHT		
9	FE3-8409-000		1	TRAY, REVERSE		

FIGURE 107
INTERNAL COMPONENTS 5

(J7002)
(J201)
(J274)
(J276)
(J5216)
(J5211)
AU,SG,NK
EXCEPT AU,SG,NK
2-26

FIGURE 107
INTERNAL COMPONENTS 5

(J7002)
(J201)
(J274)
(J276)
(J5216)
(J5211)
AU.SG.NK
EXCEPT AU.SG.NK
2-26

FIGURE & KEY NO.	PARTS NUMBER	R A N K	Q'TY	DESCRIPTION	SERIAL NUMBER/ REMARKS	S V C
Fig.107	NPN		RF	INTERNAL COMPONENTS 5		
1	FM0-0050-000		1	1ST TRANSFER H.V. PCB ASSEMBLY		
2	FK4-0647-000		1	CABLE, FLAT		
3	FM1-A836-000		1	CABLE, REG. MOTOR WASTE TONER		
4	FM1-A811-000		1	CABLE, CASSETTE HEATER	120V	
4	FM1-A812-000		1	CABLE, CASSETTE HEATER	230V	
5	FM1-B513-000		1	HEATER, CASSETTE	H02 AU,SG,HK	
6	FE3-4477-000		1	CAP, CONNECTOR	EXCEPT AU,SG,HK	
6	FE3-4478-000		1	PANEL, CST. HEATER CONNECTOR	AU,SG,HK	
7	FM1-B574-000		2	FOOT, RUBBER		
8	FM1-B298-000		2	CASSETTE STOPPER ASSEMBLY		
9	FM1-C323-000		1	OPTION CST. DRAWER ASSEMBLY		
10	XA9-1386-000		AR	SCREW,RS,M3X8		

FIGURE 108
MACHINE REAR PLATE 1

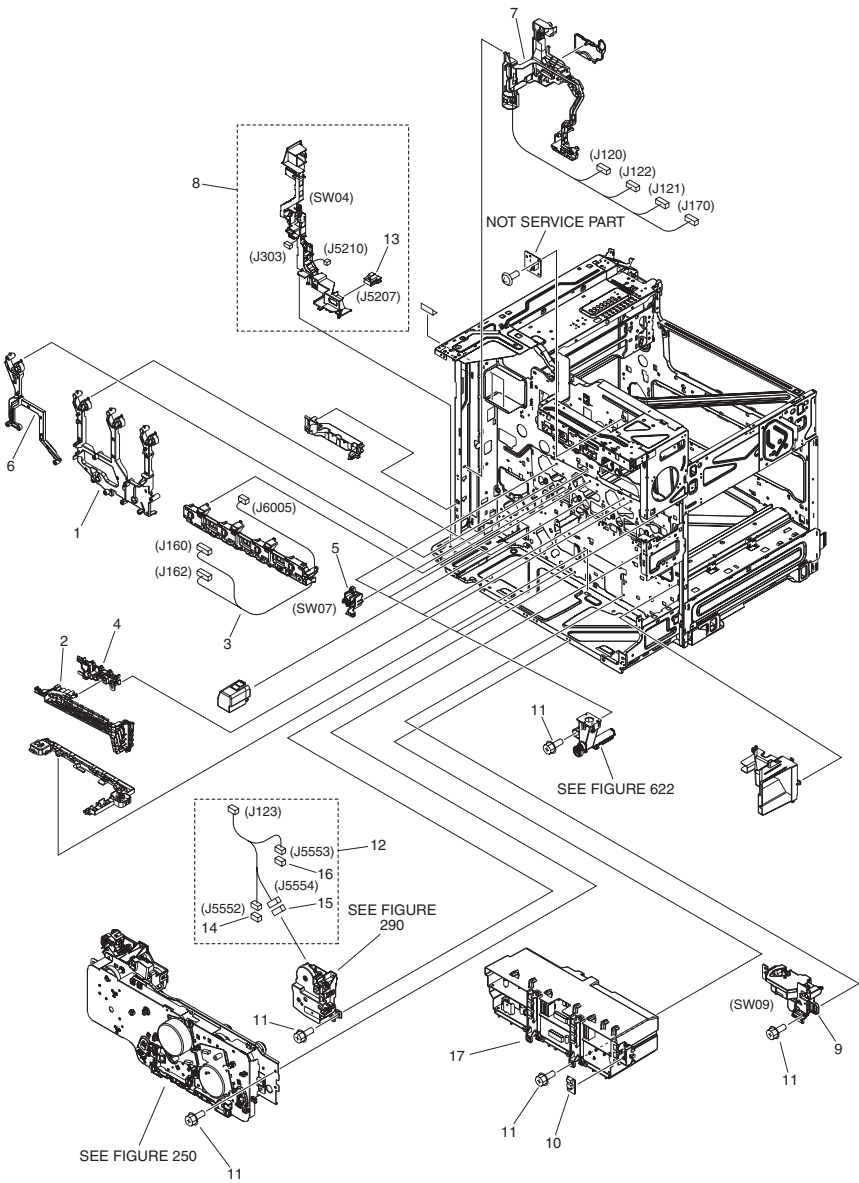


FIGURE & KEY NO.	PARTS NUMBER	R A N K	Q'TY	DESCRIPTION	SERIAL NUMBER/ REMARKS	S V C
Fig.108	NPN		RF	MACHINE REAR PLATE 1		
1	FM0-0043-000		1	H.V. CONTACT ASSEMBLY, COLOR		
2	FM4-9961-000		1	1ST TRANS. H.V. CONTACT ASS'Y		
3	FM4-9908-000		1	PROCESS CONTROL PCB ASS'Y		
4	FM0-0038-000		1	CONTACT, 1ST TRANSFER H.V., 1		
5	FM0-0039-000		1	I.T.B. RELEASE SWITCH ASSEMBLY	SW07	
6	FM0-0042-000		1	H.V. CONTACT ASSEMBLY, BLACK		
7	FM0-0079-000		1	2ND TRANS. H.V. CONTACT ASS'Y		
8	FM0-0083-000		1	HEATER SWITCH ASSEMBLY	SW04 120V	
8	FM0-0084-000		1	HEATER SWITCH ASSEMBLY	SW04 230V	
9	FM0-0017-000		1	CASSETTE AUTO CLOSE ASSEMBLY	SW09	
10	WP2-5410-000		1	SENSOR, HUMIDITY		
11	XA9-1386-000		AR	SCREW,RS,M3X8		
12	FM1-A843-000		1	CABLE, CASSETTE ASS'Y		
13	VS3-5083-004		1	CONNECTOR, 4P, FEMALE		
14	VS1-7177-002		1	CONNECTOR, SNAP TIGHT, BK		
15	VS1-7177-003		1	CONNECTOR, SNAP TIGHT, BK		
16	VS1-7177-004		1	CONNECTOR, SNAP TIGHT, BK		
17	FM0-0048-000		1	2ND TRANSFER H.V. PCB ASSEMBLY		

[illegible]

FIGURE & KEY NO.	PARTS NUMBER	R A N K	Q'TY	DESCRIPTION	SERIAL NUMBER/ REMARKS	S V C
Fig.109	NPN		RF	MACHINE REAR PLATE 2		
1	FM0-0044-000		1	INTERLOCK ASSEMBLY		
2	FM0-0046-000		1	SWITCH ASSEMBLY, RIGHT	SW05	
3	FM1-C857-000		1	CABLE, BOTTLE		
4	WG8-5935-000		1	IC, PHOTO INTERRUPTER	PS14	
5	FM1-A832-000		1	CABLE, PRIMARY TRANSFER H.V.		
6	FM1-A839-000		1	CABLE, MAIN		
7	VS1-7177-002		2	CONNECTOR, SNAP TIGHT, BK		
8	VS1-7177-003		2	CONNECTOR, SNAP TIGHT, BK		
9	FM1-A855-000		2	CABLE, BOTTLE SENSOR, Y/C		
10	VS1-7207-003		2	CONNECTOR, SNAP TIGHT, BK		
11	VS1-8412-017		1	CONNECTOR, SNAP TIGHT, BL		
12	FM1-A853-000		1	CABLE, FIXING DRIVE		
13	FM1-A814-000		1	CABLE, POWER SUPPLY		
14	XA9-1386-000		AR	SCREW,RS,M3X8		
15	FM1-A820-000		1	CABLE, ENVIRONMENT SENSOR		
16	FM1-A854-000		2	CABLE, BOTTLE SENSOR, M/K		
17	FM1-A821-000		1	CABLE, FINISHER		

FIGURE 130
CONTROL PANEL ASSEMBLY

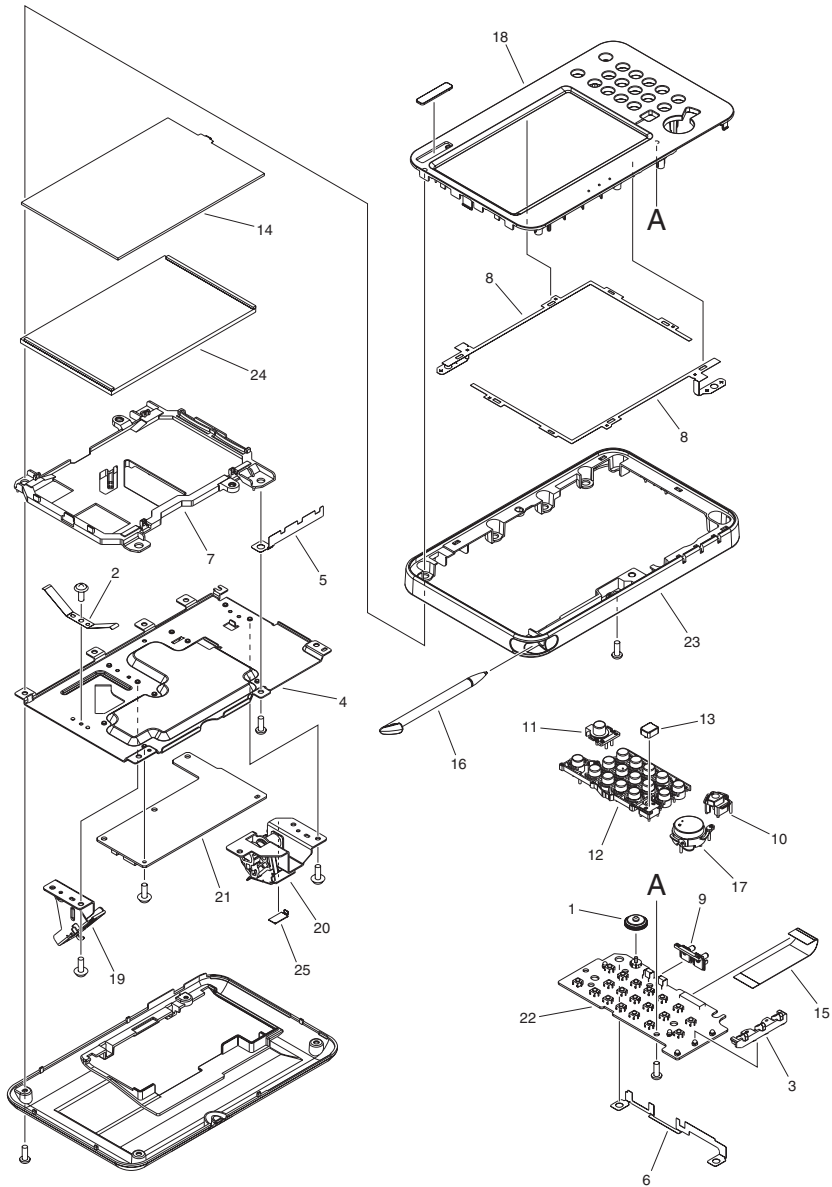


FIGURE & KEY NO.	PARTS NUMBER	R A N K	Q'TY	DESCRIPTION	SERIAL NUMBER/ REMARKS	S V C
Fig.130	FM4-9939-000		1	CONTROL PANEL ASSEMBLY	C351iF	
Fig.130	FM0-0051-000		1	CONTROL PANEL ASSEMBLY	C350i EUR	
Fig.130	FM4-9941-000		1	CONTROL PANEL ASSEMBLY	C350i AU,SG,HK	
Fig.130	FM4-9931-000		1	CONTROL PANEL ASSEMBLY	C350iF	
Fig.130	FM4-9940-000		1	CONTROL PANEL ASSEMBLY	C250i EUR	
Fig.130	FM4-9933-000		1	CONTROL PANEL ASSEMBLY	C250i AU,SG,HK	
Fig.130	FM4-9932-000		1	CONTROL PANEL ASSEMBLY	C250iF	
1	FC0-3267-000		1	DIAL, CONTRAST		
2	FC0-8988-000		1	PLATE, GROUNDING		
3	FE2-1544-000		1	COVER, LAMP		
4	FE2-1556-000		1	CROSSMEMBER, CONTROL PANEL		
5	FE2-1584-000		1	PLATE, DIAL, 2		
6	FE2-1585-000		1	PLATE, DIAL, 1		
7	FE3-1731-000		1	COVER, LCD		
8	FE3-1742-000		2	SHEET, TOUCH PANEL		
9	FE3-1744-000		1	KEY TOP, VOLUME		
10	FE3-1745-000		1	KEY TOP, STOP		
11	FE3-1746-000		1	KEY TOP, ENERGY SAVER		
12	FE3-1747-000		1	KEY TOP, TEN		
13	FE3-1748-000		1	KEY TOP, RESET		
14	FK4-0092-000		1	PANEL, TOUCH		
15	FK4-0922-000		1	CABLE, FLAT		
16	FL0-0287-000		1	PEN, TOUCH PANEL		
17	FL3-6538-000		1	KEY, START		
18	FL3-6540-000		1	PANEL, CONTROL, FRONT UPPER	EXCEPT EUR	
18	FL3-6544-000		1	PANEL, CONTROL, FRONT UPPER	EUR	
19	FM0-0076-000		1	HINGE, CONTROL ASSEMBLY, LEFT		
20	FM0-0077-000		1	HINGE, CONTROL ASSEMBLY, RIGHT		
21	FM1-D941-000		1	CONTROL PANEL CPU PCB ASSEMBLY		
22	FM1-D942-000		1	CONTROL PANEL KEY PCB ASSEMBLY		
23	FE2-1554-000		1	COVER, FRONT		
24	FM1-A214-000		1	LCD UNIT		

FIGURE & KEY NO.	PARTS NUMBER	R A N K	Q'TY	DESCRIPTION	SERIAL NUMBER/ REMARKS	S V C
25	FC5-7863-000		1	SUPPORT		

FIGURE 190
CARTRIDGE AIR INTAKE FAN ASS'Y

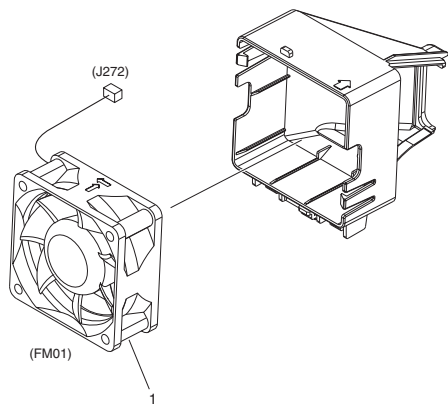


FIGURE & KEY NO.	PARTS NUMBER	R A N K	Q'TY	DESCRIPTION	SERIAL NUMBER/ REMARKS	S V C
Fig.190	NPN		RF	CARTRIDGE AIR INTAKE FAN ASS'Y		
1	FK2-3679-000		1	FAN	FM01	

FIGURE 191
DELIVERY COOLING FAN ASSEMBLY

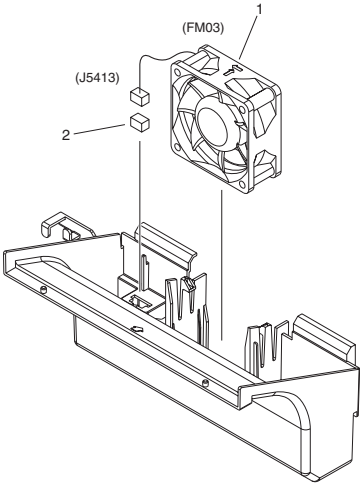


FIGURE & KEY NO.	PARTS NUMBER	R A N K	Q'TY	DESCRIPTION	SERIAL NUMBER/ REMARKS	S V C
Fig.191	NPN		RF	DELIVERY COOLING FAN ASSEMBLY		
1	FK2-3679-000		1	FAN	FM03	
2	VS1-7440-003		1	CONNECTOR, SNAP TIGHT, BK		

FIGURE 192
POWER SUPPLY FAN ASSEMBLY

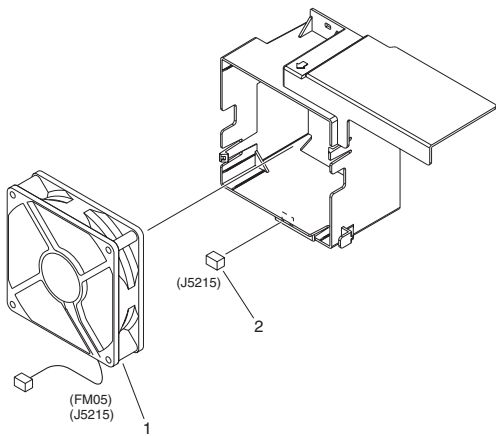


FIGURE & KEY NO.	PARTS NUMBER	RANK	Q'TY	DESCRIPTION	SERIAL NUMBER/REMARKS	SVC
Fig.192	NPN		RF	POWER SUPPLY FAN ASSEMBLY		
1	FK4-0815-000		1	FAN	FM05	
2	VS1-7177-003		1	CONNECTOR, SNAP TIGHT, BK		

FIGURE 250
MAIN DRIVE ASSEMBLY

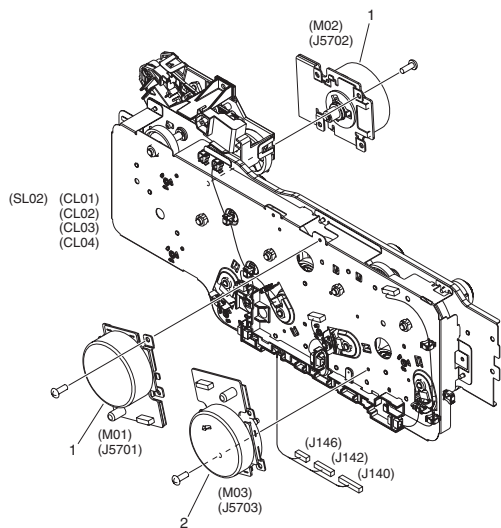


FIGURE & KEY NO.	PARTS NUMBER	R A N K	Q'TY	DESCRIPTION	SERIAL NUMBER/ REMARKS	S V C
Fig.250	FM0-0040-000		1	MAIN DRIVE ASSEMBLY	CL01,CL02,CL03,CL04,SL 02	
1	FL0-1543-000		2	MOTOR, DC	M01,M02	
2	FL0-1544-000		1	MOTOR, DC	M03	

FIGURE 260
PAPER PICK-UP DRIVE ASSEMBLY

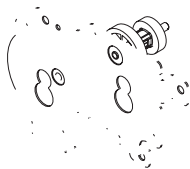


FIGURE & KEY NO.	PARTS NUMBER	R A N K	Q'TY	DESCRIPTION	SERIAL NUMBER/ REMARKS	S V C
Fig.260	FM1-A226-000		1	PAPER PICK-UP DRIVE ASSEMBLY		
1	FK4-0640-000		2	MOTOR, STEPPING	M05,M06	

FIGURE 270
BOTTLE DRIVE ASSEMBLY

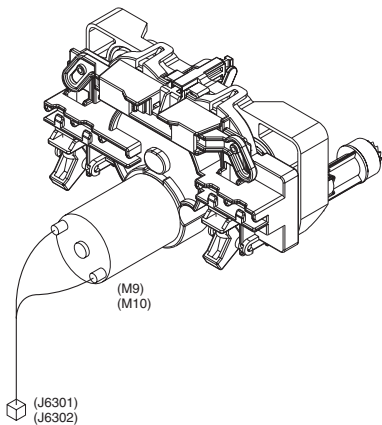


FIGURE & KEY NO.	PARTS NUMBER	R A N K	Q'TY	DESCRIPTION	SERIAL NUMBER/ REMARKS	S V C
Fig.270	FM0-0007-000		2	BOTTLE DRIVE ASSEMBLY	M09,M10	

FIGURE 280
FIXING DRIVE ASSEMBLY

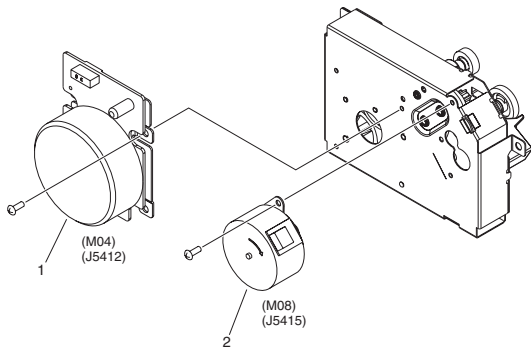


FIGURE & KEY NO.	PARTS NUMBER	R A N K	Q'TY	DESCRIPTION	SERIAL NUMBER/REMARKS	S V C
Fig.280	FM0-0034-000		1	FIXING DRIVE ASSEMBLY		
1	FK4-0638-000		1	MOTOR, DC	M04	
2	FK4-0641-000		1	MOTOR, STEPPING	M08	

FIGURE 290
PICK-UP LIFTER DRIVE ASS'Y

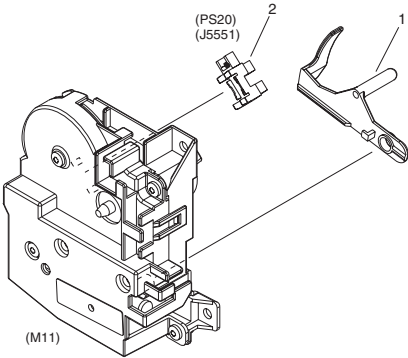
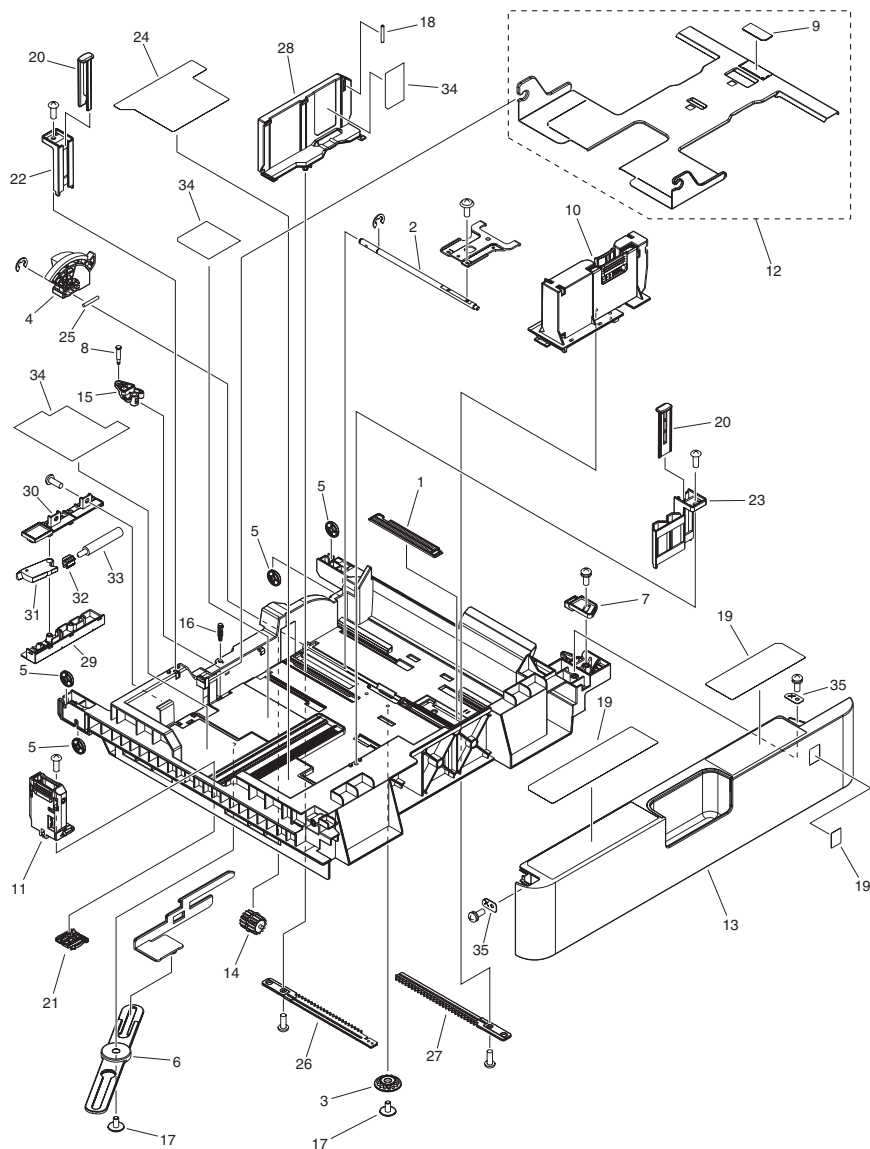


FIGURE & KEY NO.	PARTS NUMBER	RANK	Q'TY	DESCRIPTION	SERIAL NUMBER/REMARKS	SVC
Fig.290	FM0-0018-000		1	PICK-UP LIFTER DRIVE ASS'Y	M11	
1	FE3-4041-000		1	LEVER, REMNANT DETECT		
2	WG8-5935-000		1	IC, PHOTO INTERRUPTER	PS20	

FIGURE 300 CASSETTE



NOTE 1 : This assembly does not include the parts shown with key No. 19 and 34.

NOTE 2 : Several kinds of labels are attached on the board for the parts of Key No. 19 and 34.

注 1 : このユニットにKey No.19, 34の部品は含まれません。

注 2 : Key No. 19, 34の部品は台紙に数種類のラベルが付いています。

FIGURE & KEY NO.	PARTS NUMBER	R A N K	Q'TY	DESCRIPTION	SERIAL NUMBER/ REMARKS	S V C
Fig.300	FM0-0019-000		1	CASSETTE	SEE NOTE	
1	FC0-7661-000		1	STOPPER, FREE		
2	FC0-7662-000		1	SHAFT, LIFTER		
3	FC8-4990-000		1	GEAR, 14T		
4	FE3-1527-000		1	GEAR, 68T/37T		
5	FE3-1528-000		4	ROLLER, CASSETTE		
6	FE3-3950-000		1	ARM, SIZE SENSOR LINK		
7	FE3-4476-000		1	SPACER		
8	FE3-6143-000		1	PIN, GUIDE		
9	FL3-6526-000		1	SHEET, SEPARATION		
10	FM1-B545-000		1	PLATE, PAPER SIDE END, FRONT		
11	FM1-B547-000		1	PLATE, BACK END LIMIT		
12	FM1-B548-000		1	PLATE, MIDDLE		
13	FM1-D010-000		1	CASSETTE COVER ASSEMBLY, FRONT		
14	RC1-9396-000		1	GEAR, 14T		
15	FC0-7832-000		1	ARM, GUIDE		
16	FC0-7830-000		1	PIN, ARM		
17	XA9-1523-000		2	SCREW, B, M4X8		
18	XD9-0290-000		1	PIN, PARALLEL		
19	FE3-7410-000		1	LABEL, CASSETTE		
20	FE3-9437-000		2	BLOCK, PAPER SIDE END		
21	FE3-6357-000		1	PLATE, LINK		
22	FE3-9436-000		1	BLOCK, PAPER SIDE END, REAR		
23	FE3-9501-000		1	BLOCK, PAPER SIDE END, FRONT		
24	FE3-9591-000		1	LABEL, SIZE BACK END OPERATION		
25	XD9-0359-000		1	PIN, PARALLEL		
26	FE4-0306-000		1	RACK, PAPER SIDE END		
27	FC0-7660-000		1	RACK, SIDE		
28	FE3-0481-000		1	PLATE, PAPER SIDE END, REAR		
29	FE4-1425-000		1	HOLDER, DAMPER		
30	FE4-1426-000		1	COVER, DAMPER HOLDER		
31	FE4-1427-000		1	LINK, DAMPER		

FIGURE & KEY NO.	PARTS NUMBER	R A N K	Q'TY	DESCRIPTION	SERIAL NUMBER/ REMARKS	S V C
32	FE4-1428-000		1	LINK, DAMPER	SEE NOTE	
33	FE4-1500-000		1	DAMPER, OIL		
34	FE3-7412-000		1	LABEL, ENVELOPE OPERATION		
35	FE3-8153-000		2	WASHER		

FIGURE 310
RESIST/PAPER PICK-UP ASS'Y

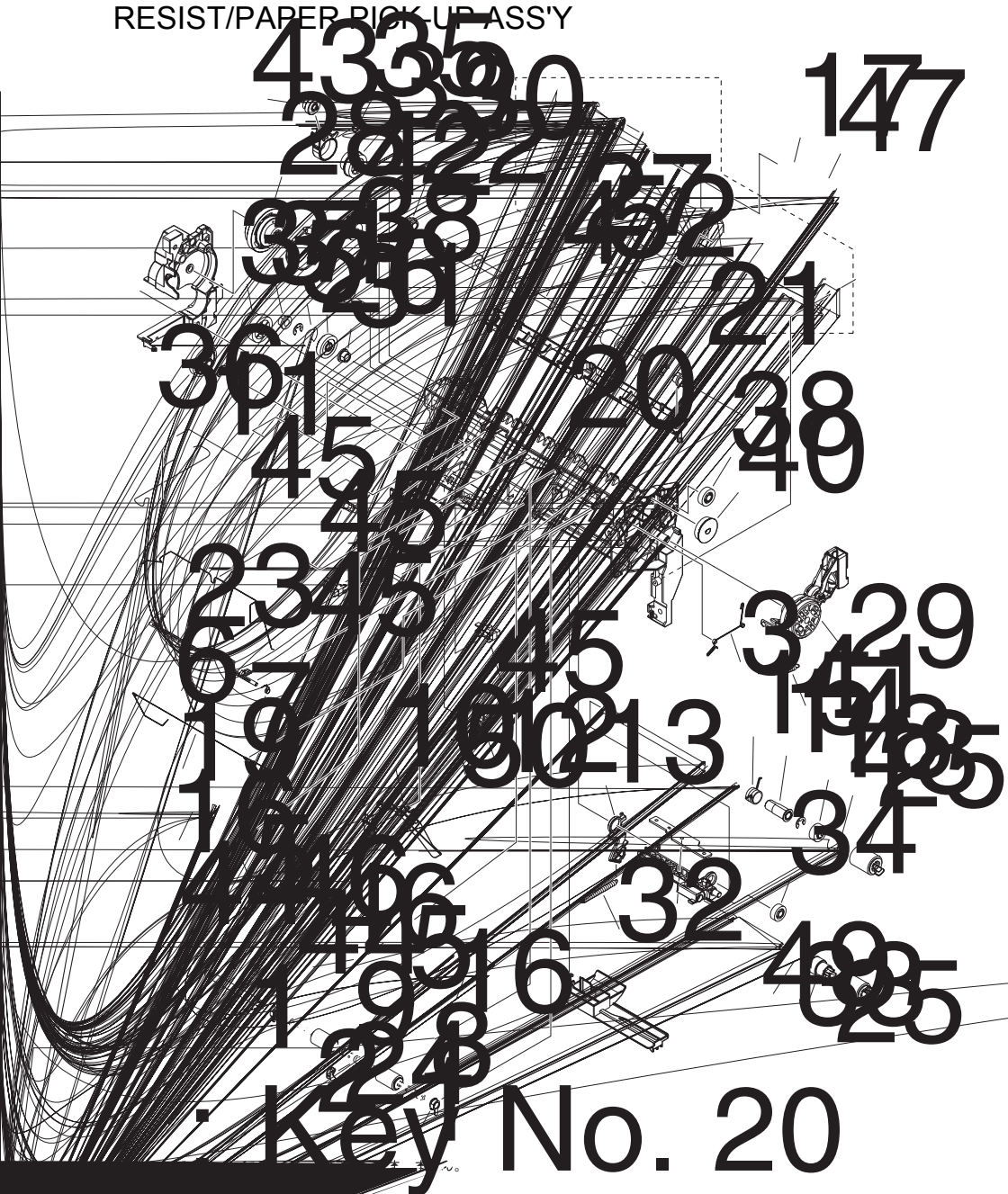
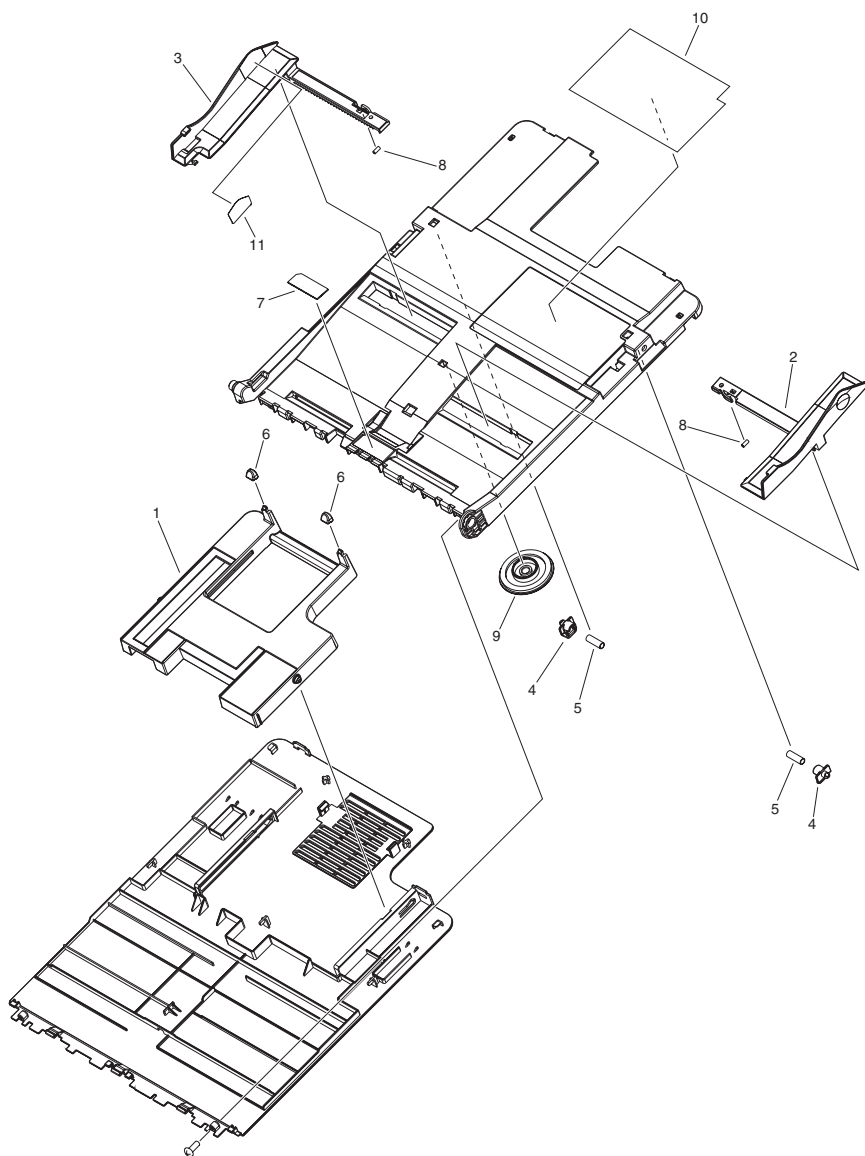


FIGURE & KEY NO.	PARTS NUMBER	R A N K	Q'TY	DESCRIPTION	SERIAL NUMBER/ REMARKS	S V C
Fig.310	FM0-0029-000		1	RESIST/PAPER PICK-UP ASS'Y	SEE NOTE	
1	FC0-5876-000		2	BUSHING		
2	FC0-5888-000		1	BUSHING		
3	FC0-6968-000		1	CABLE, REG. GROUNDING		
4	FC0-6979-000		1	ROLLER, REGISTRATION		
5	FC0-7174-000		2	BLOCK, REGIST. PRESSURE		
6	FC0-7204-000		1	LEVER, PAPER PICK-UP SENSOR		
7	FC0-7205-000		1	SPRING, TORSION		
8	FC0-7211-000		1	SPRING, TORSION		
9	FC0-7218-000		1	FLAG, REGISTRATION SENSOR		
10	FC0-7670-000		1	LEVER, PAPER DETECT		
11	FC6-1353-000		1	BUSHING		
12	FE3-1585-000		1	LEVER, PAPER PICK-UP LATCH		
13	FE3-1602-000		1	ARM, PAPER PICK-UP		
14	FE3-1617-000		1	BUSHING		
15	FE3-1618-000		1	SPRING, TORSION		
16	FE3-9592-000		2	ROLLER, REGISTRATION DRIVEN		
17	FE3-4860-000		1	LIMITER, TORQUE		
18	FE3-4861-000		1	GEAR, 23T		
19	FE3-5614-000		1	SPRING, GROUNDING		
20	FE3-6112-000		1	GUIDE, PRE-REGISTRATION		
21	FE3-6113-000		1	BUSHING		
22	FE3-6114-000		1	BUSHING		
23	FE3-6119-000		1	SPRING, GROUNDING		
24	FL0-1834-000		1	ROLLER, EXTRACTION		
25	FL0-1011-000		2	ROLLER, PAPER PICK-UP&FEED		
26	FL0-1570-000		1	ONE-WAY GEAR ASSEMBLY		
27	FL0-2588-000		1	SHEET, SEPARATION ROLLER GUIDE		
28	FM0-0030-000		1	ONE-WAY GEAR ASSEMBLY		
29	FM1-B297-000		1	REG. SWING HOLDER ASSEMBLY		
30	FM1-B557-000		1	SEPARATION FRAME ASSEMBLY		
31	FS1-1205-000		2	BUSHING		

FIGURE & KEY NO.	PARTS NUMBER	R A N K	Q'TY	DESCRIPTION	SERIAL NUMBER/ REMARKS	S V C
32	FU2-0234-000		1	SPRING, TENSION	PS02,PS04,PS05,PS18	
33	FU2-0247-000		1	GEAR, 23T		
34	FU2-0248-000		1	GEAR, 22T		
35	FU2-0284-000		1	SPRING, TORSION		
36	FU2-0287-000		1	GEAR, 32T		
37	FU2-0294-000		1	GEAR, 27T/21T		
38	FU2-0295-000		2	GEAR, 17T		
39	FU2-0297-000		1	GEAR, 24T/20T		
40	FU2-0298-000		1	GEAR, 23T		
41	FU2-0578-000		1	HOLDER, REGISTRATION SWING		
42	FU8-0085-000		1	GEAR, 18T		
43	FU9-0675-000		1	GEAR, 17T		
44	FU9-2094-000		2	SPRING, TORSION		
45	WG8-5935-000		4	IC, PHOTO INTERRUPTER		
46	FE3-9593-000		2	ROLLER, REGISTRATION DRIVEN		
47	FL0-1674-000		1	ROLLER, SEPARATION		
48	FL0-1515-000		1	ONE-WAY CLUTCH ASSEMBLY		
49	FU2-0236-000		1	SPRING, TENSION		
50	FE3-3935-000		1	SPRING, TORSION		
51	FC6-3002-000		1	RING, RESIN, RETAINING		
52	FL0-4485-000		1	SHEET, GAP		

FIGURE 330

MULTI FEED TRAY ASSEMBLY



NOTE 1 : This assembly is included in the assembly shown in Figure 102.

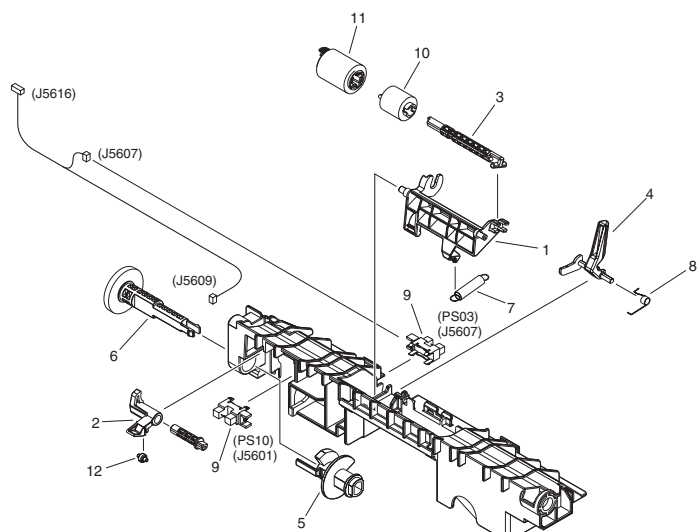
NOTE 2 : This assembly does not include the part shown with key No. 10.

注 1 : このユニットはFigure 102のユニットに含まれます。

注 2 : このユニットにKey No. 10の部品は含まれません。

FIGURE & KEY NO.	PARTS NUMBER	R A N K	Q'TY	DESCRIPTION	SERIAL NUMBER/ REMARKS	S V C
Fig.330	FM1-B307-000		1	MULTI FEED TRAY ASSEMBLY	SEE NOTE 1	
1	FC0-6621-000		1	TRAY, MULTI FEED EXTENSION		
2	FC0-7453-000		1	PLATE, PAPER SIDE END, FRONT		
3	FC0-7454-000		1	PLATE, PAPER SIDE END, REAR		
4	FE3-5650-000		2	HOOK, MULTI FEED TRAY		
5	FE3-5651-000		2	SPRING, COMPRESSION		
6	FE3-5652-000		2	CAP, MULTI FEED EXTENSION TRAY		
7	FL3-6526-000		1	SHEET, SEPARATION		
8	FU2-0582-000		2	SPRING, COMPRESSION		
9	FU9-0692-000		1	PINION, SIDE END		
10	FC0-7759-000		1	LABEL, MULTI FEED SIZE	SEE NOTE 2 US,CA,LTN	
10	FC0-7761-000		1	LABEL, MULTI FEED SIZE	SEE NOTE 2 AU,SG,HK	
10	FC0-7760-000		1	LABEL, MULTI FEED SIZE	SEE NOTE 2 EUR	
11	FE3-3955-000		1	LABEL, MULTI PICK-UP FULL		

FIGURE 331
MULTI FEED PAPER PICK-UP ASS'Y



NOTE 1 : This assembly is included in the assembly shown in Figure 102.
NOTE 2 : This assembly does not include the parts shown with key No. 10 and 11.
注 1 : このユニットはFigure 102のユニットに含まれます。
注 2 : このユニットにKey No. 10, 11の部品は含まれません。

FIGURE & KEY NO.	PARTS NUMBER	R A N K	Q'TY	DESCRIPTION	SERIAL NUMBER/ REMARKS	S V C
Fig.331	FM1-B308-000		1	MULTI FEED PAPER PICK-UP ASS'Y	SEE NOTE 1	
1	FC0-6637-000		1	HOLDER, PAPER FEED ROLLER		
2	FC0-7447-000		1	LINK, RELEASE		
3	FE3-0387-000		1	SHAFT, ROLLER		
4	FE3-1642-000		1	LEVER, PAPER YES/NO SENSING		
5	FE3-3589-000		1	CAM, ROLLER ESTRANGEMENT		
6	FU6-1304-000		1	GEAR, 33T		
7	FU9-2088-000		1	SPRING, TENSION		
8	FU9-2091-000		1	SPRING, TORSION		
9	WG8-5935-000		2	IC, PHOTO INTERRUPTER	PS03,PS10	
10	FE3-4860-000		1	LIMITER, TORQUE	SEE NOTE 2	
11	FL0-1674-000		1	ROLLER, SEPARATION	SEE NOTE 2	
12	FE3-5655-000		1	ROLLER, ESTRANGEMENT CAM		

FIGURE 332
DUPLEXING GUIDE ASSEMBLY

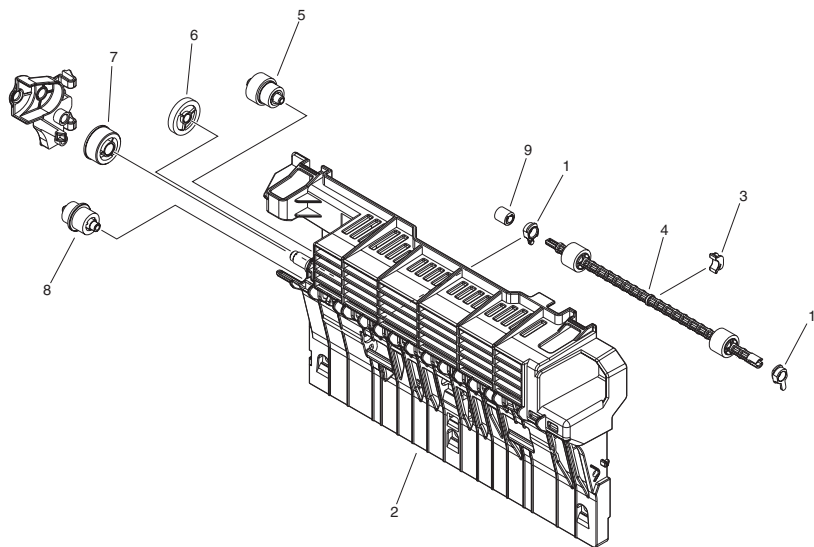


FIGURE & KEY NO.	PARTS NUMBER	R A N K	Q'TY	DESCRIPTION	SERIAL NUMBER/ REMARKS	S V C
Fig.332	NPN		RF	DUPLEXING GUIDE ASSEMBLY		
1	FC0-5876-000		2	BUSHING		
2	FC0-5886-000		1	GUIDE, DUPLEXING		
3	FC0-5888-000		1	BUSHING		
4	FL3-6443-000		1	ROLLER, DUPLEXING FEED		
5	FM1-B551-000		1	PLANETARY ONE-WAY GEAR ASS'Y		
6	FU9-0663-000		1	GEAR, 25T		
7	FU9-0666-000		1	GEAR, 23T		
8	FU9-0672-000		1	GEAR, 25T/14T		
9	FU9-0720-000		1	GEAR, 16T		

FIGURE 350
PAPER DELIVERY/REVERSE ASS'Y

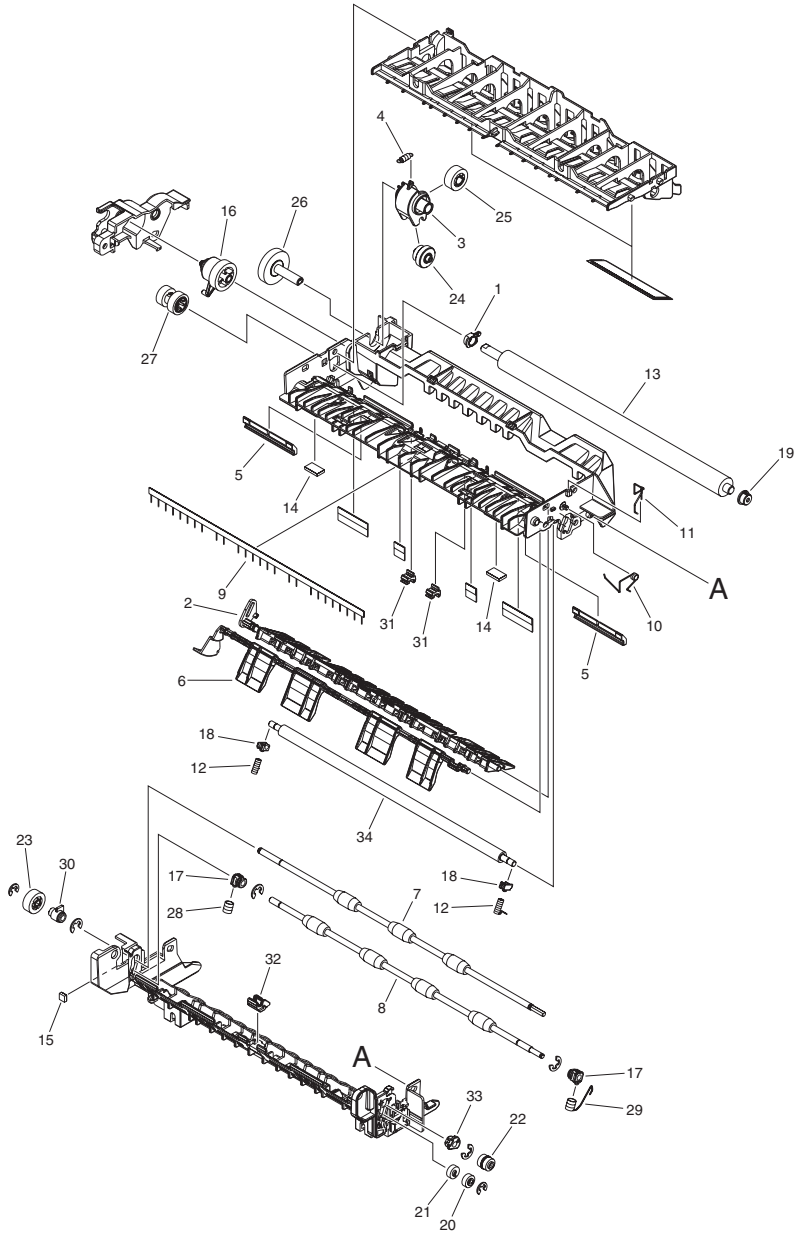


FIGURE & KEY NO.	PARTS NUMBER	R A N K	Q'TY	DESCRIPTION	SERIAL NUMBER/ REMARKS	S V C
Fig.350	FM0-0021-000		1	PAPER DELIVERY/REVERSE ASS'Y		
1	FC0-5876-000		1	BUSHING		
2	FC0-5880-000		1	FLAPPER, REVERSE		
3	FC0-5891-000		1	HOLDER, DUPLEXING SWING GEAR		
4	FC0-5892-000		1	SPRING, TENSION		
5	FE3-9461-000		2	GUIDE, ENTRANCE		
6	FC0-6102-000		1	FLAG, FULL DETECT		
7	FC0-7698-000		1	ROLLER, PAPER DELIVERY, UPPER		
8	FC0-7699-000		1	ROLLER, PAPER DELIVERY, LOWER		
9	FE3-3744-000		1	ELIMINATOR, STATIC CHARGE		
10	FE3-3745-000		1	SPRING, GROUNDING		
11	FE3-5739-000		1	SPRING, GROUNDING		
12	FE3-5740-000		2	SPRING, COMPRESSION		
13	FE3-6111-000		1	ROLLER, FIXING PAPER DELIVERY		
14	FL0-1009-000		2	SHEET, FLAG, SILENCER		
15	FL0-1010-000		1	SHEET, FLAG SILENCER		
16	FL0-1833-000		2	GEAR, 24T		
17	FU2-0718-000		2	BUSHING		
18	FU2-0719-000		2	BUSHING		
19	FU2-0720-000		1	BUSHING		
20	FU2-0810-000		1	GEAR, 9T		
21	FU2-0811-000		1	GEAR, 9T		
22	FU2-0812-000		1	GEAR, 9T/9T		
23	FU9-0613-000		1	GEAR, 18T		
24	FU9-0675-000		1	GEAR, 17T		
25	FU9-0676-000		1	GEAR, 18T		
26	FU9-0677-000		1	GEAR, 29T		
27	FU9-0680-000		1	GEAR, 17T/15T		
28	FU9-2108-000		1	SPRING, COMPRESSION		
29	FU9-2191-000		1	SPRING, TORSION		
30	FE3-8410-000		1	BUSHING		
31	FC0-7828-000		2	CLIP, SHAFT, UPPER		

FIGURE & KEY NO.	PARTS NUMBER	R A N K	Q'TY	DESCRIPTION	SERIAL NUMBER/ REMARKS	S V C
32	FC0-7827-000		1	CLIP, SHAFT, LOWER		
33	FE3-8411-000		1	BUSHING		
34	FC7-6108-000		1	ROLLER, PAPER DELIVERY DRIVEN		

FIGURE 460
LASER SCANNER ASSEMBLY

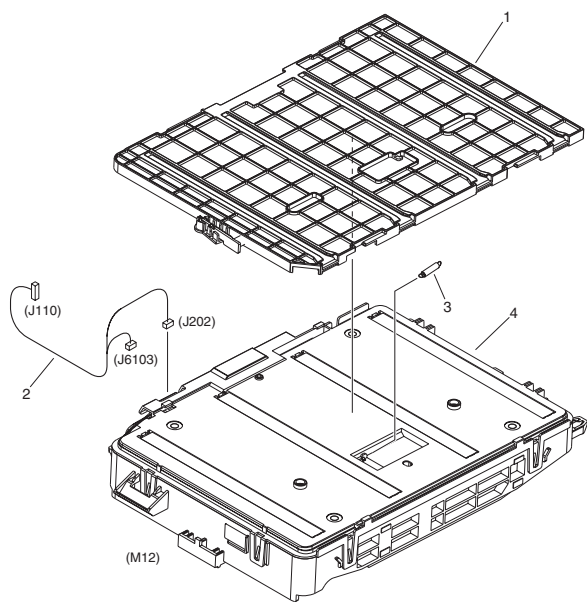


FIGURE & KEY NO.	PARTS NUMBER	R A N K	Q'TY	DESCRIPTION	SERIAL NUMBER/ REMARKS	S V C
Fig.460	NPN		RF	LASER SCANNER ASSEMBLY		
1	FM0-0031-000		1	DUST-PROOF SHUTTER ASSEMBLY		
2	FM1-A823-000		1	CABLE, LASER SCANNER		
3	FU9-2181-000		1	SPRING, TENSION		
4	FM0-0144-000		1	LASER SCANNER ASSEMBLY	M12	

FIGURE 530
INTER. TRANSFER BELT ASS'Y

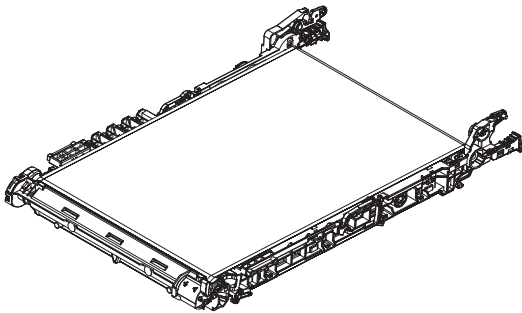


FIGURE & KEY NO.	PARTS NUMBER	R A N K	Q'TY	DESCRIPTION	SERIAL NUMBER/ REMARKS	S V C
Fig.530	FM1-A153-000		1	INTER. TRANSFER BELT ASS'Y	[DP]	

FIGURE 621
BOTTLE MOUNT ASSEMBLY

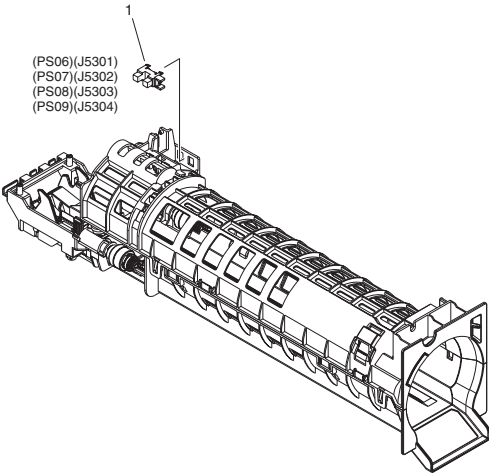


FIGURE & KEY NO.	PARTS NUMBER	R A N K	Q'TY	DESCRIPTION	SERIAL NUMBER/ REMARKS	S V C
Fig.621	FM0-0002-000		4	BOTTLE MOUNT ASSEMBLY		
1	WG8-5935-000		4	IC, PHOTO INTERRUPTER	PS06,PS07,PS08,PS09	

FIGURE 622
HOPPER ASSEMBLY

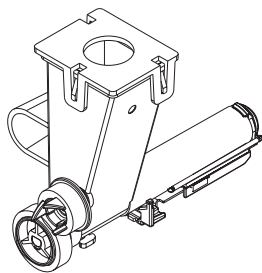


FIGURE & KEY NO.	PARTS NUMBER	R A N K	Q'TY	DESCRIPTION	SERIAL NUMBER/ REMARKS	S V C
Fig.622	FM0-0006-000		4	HOPPER ASSEMBLY		

FIGURE 771
INTERNAL COVER ASSEMBLY

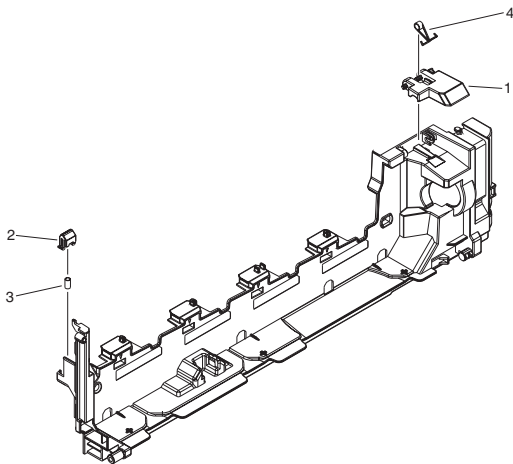


FIGURE & KEY NO.	PARTS NUMBER	RANK	Q'TY	DESCRIPTION	SERIAL NUMBER/REMARKS	SVC
Fig.771	NPN		RF	INTERNAL COVER ASSEMBLY		
1	FC0-5972-000		1	ARM, SENSOR		
2	FC0-7589-000		1	BLOCK, WASTE TONER		
3	FU2-0574-000		1	SPRING, COMPRESSION		
4	FU9-2027-000		1	SPRING, TORSION		

FIGURE 772
CONTAINER, WASTE TONER, WT-201

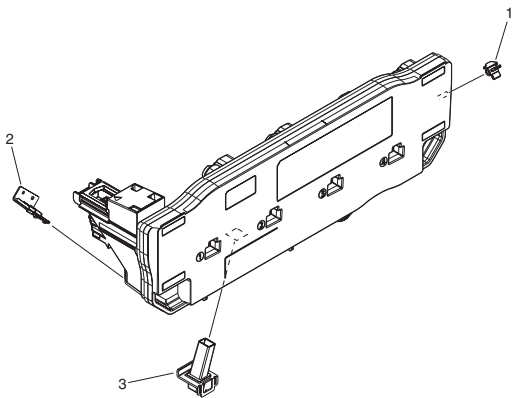


FIGURE & KEY NO.	PARTS NUMBER	RANK	Q'TY	DESCRIPTION	SERIAL NUMBER/REMARKS	SVC
Fig.772	FM0-0015-000		1	CONTAINER, WASTE TONER, WT-201	FOR NON-TECHNICAL PERSON [DP]	
1	FC0-5969-000		1	FLAG, WASTE TONER SCREW		
2	FC0-5971-000		1	CAP, WASTE TONER CONTAINER		
3	FC0-6985-000		1	WASTE TONER FULL DETECT ASS'Y		

FIGURE 810 **FIXING ASSEMBLY, FX-201**

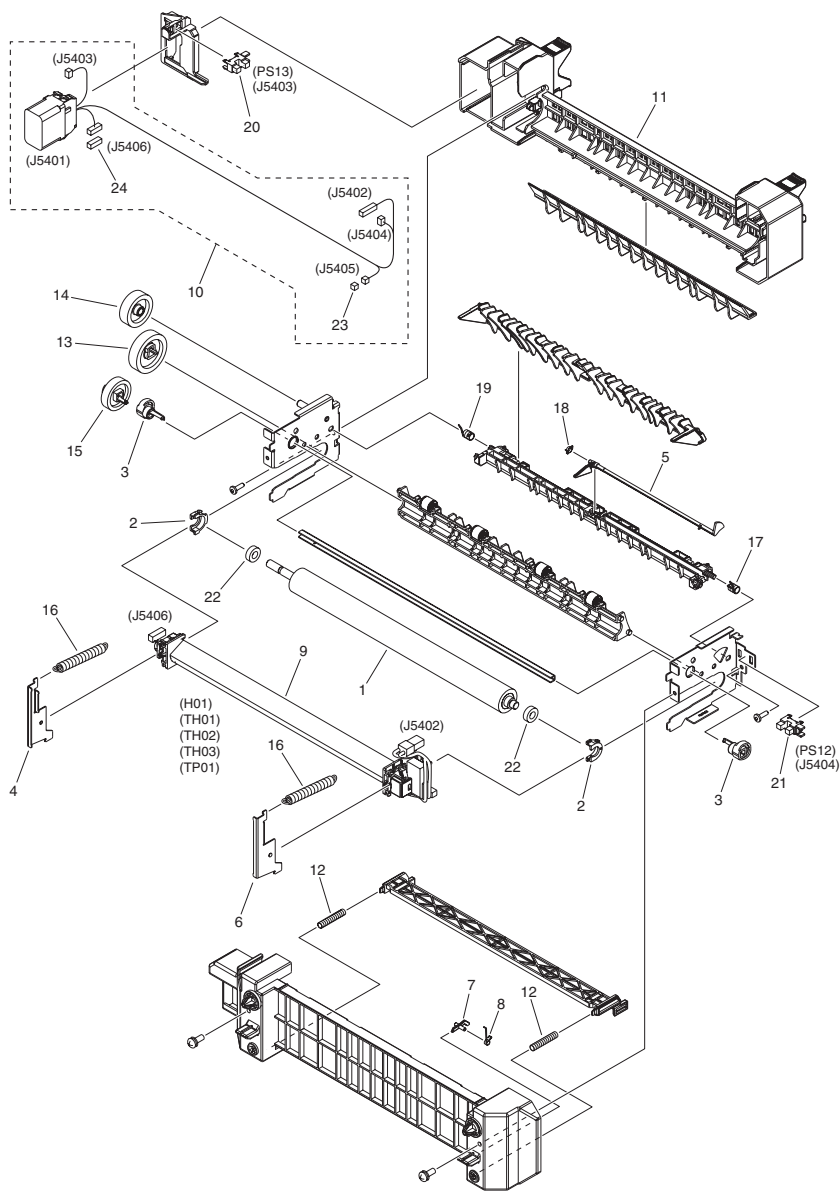


FIGURE & KEY NO.	PARTS NUMBER	R A N K	Q'TY	DESCRIPTION	SERIAL NUMBER/ REMARKS	S V C
Fig.810	FM0-0072-000		1	FIXING ASSEMBLY, FX-201	120V FOR NON- TECHNICAL PERSON [DP]	
Fig.810	FM0-0073-000		1	FIXING ASSEMBLY, FX-201	230V FOR NON- TECHNICAL PERSON [DP]	
1	FC0-6078-000		1	ROLLER, PRESSURE		
2	FC0-6079-000		2	HOLDER, BEARING		
3	FC0-6086-000		2	CAM, PRESSURE RELEASE		
4	FC0-6088-000		1	PLATE, PRESSURE, REAR		
5	FC0-6092-000		1	FLAG, PAPER DELIVERY SENSOR		
6	FC0-6131-000		1	PLATE, PRESSURE, LEFT		
7	FC0-6156-000		1	LOCK, SHUTTER, FRONT		
8	FC0-6157-000		1	LOCK, SPRING, FRONT		
9	FM0-0080-000		1	FIXING FILM ASSEMBLY	120V H01,TH01,TH02,TH03,TP 01	
9	FM1-C340-000		1	FIXING FILM ASSEMBLY	230V H01,TH01,TH02,TH03,TP 01	
10	FM1-A802-000		1	CABLE, FIXING ASSEMBLY		
11	FM1-C746-000		1	FIXING LOCK ASSEMBLY		
12	FU2-0230-000		2	SPRING, COMPRESSION		
13	FU9-0610-000		1	GEAR, 29T		
14	FU9-0611-000		1	GEAR, 24T		
15	FU9-0612-000		1	GEAR, 30T		
16	FU9-2104-000		2	SPRING, TENSION		
17	FU9-2105-000		1	SPRING, TORSION		
18	FU9-2106-000		1	SPRING, TORSION		
19	FU9-2111-000		1	SPRING, TORSION		
20	WG8-5935-000		1	IC, PHOTO INTERRUPTER	PS13	
21	WG8-5783-000		1	IC, PHOTO INTERRUPTER	PS12	
22	XG9-0831-000		2	BEARING, BALL, L-1260ZZR		
23	VS1-7177-002		1	CONNECTOR, SNAP TIGHT, BK		
24	VS1-7177-006		1	CONNECTOR, SNAP TIGHT, BK		

FIGURE 900
CONTROLLER BOX ASSEMBLY

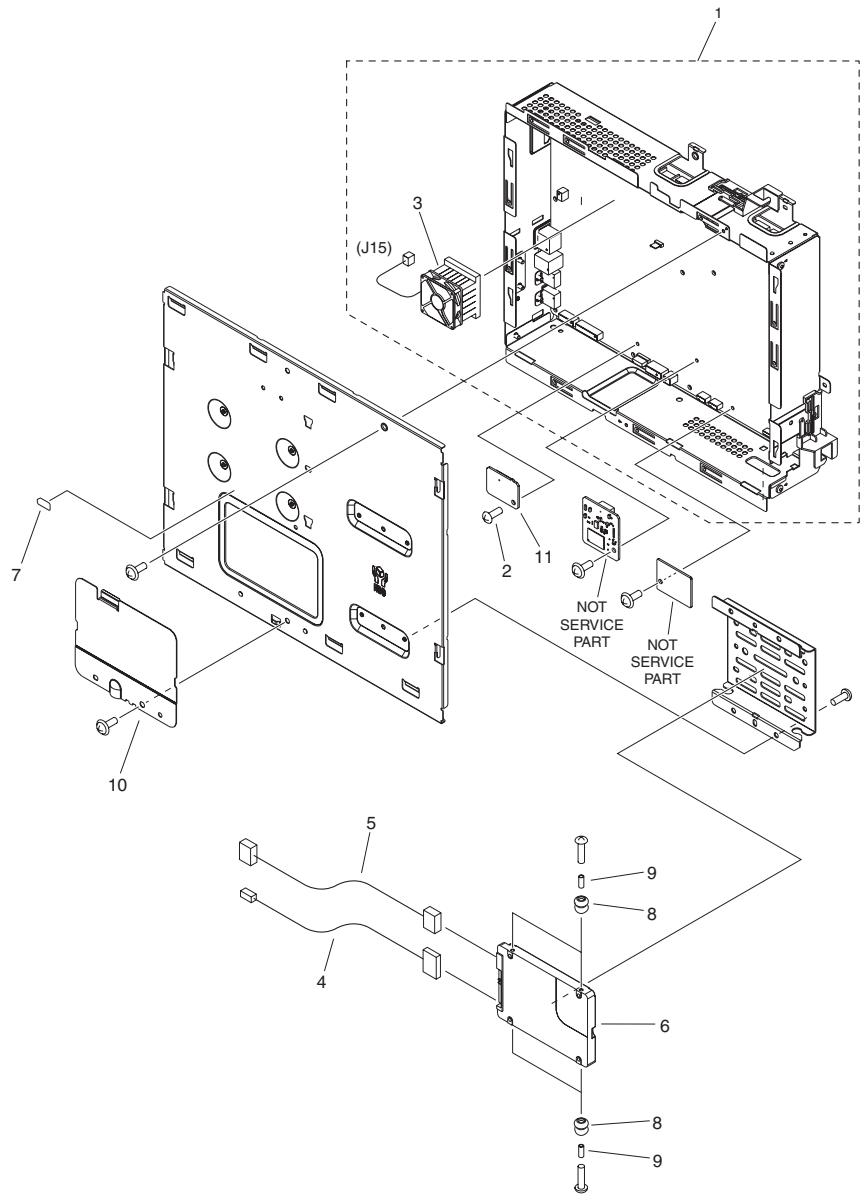


FIGURE & KEY NO.	PARTS NUMBER	R A N K	Q'TY	DESCRIPTION	SERIAL NUMBER/ REMARKS	S V C
Fig.900	NPN		RF	CONTROLLER BOX ASSEMBLY		
1	FM1-G964-000		1	MAIN CONTROLLER PCB ASSEMBLY	C350i,C350iF	
1	FM1-G966-000		1	MAIN CONTROLLER PCB ASSEMBLY	C250i,C250iF	
1	FM1-M894-000		1	MAIN CONTROLLER PCB ASSEMBLY	C351iF	
2	XA9-1979-000		2	SCREW, MACH. PAN HEAD, M3X4		
3	FM1-E996-000		1	FAN		
4	FK4-0275-000		1	CABLE, SATA POWER		
5	FK4-0276-000		1	CABLE, SATA SIGNAL		
6	FK4-1550-000		1	HARD DISK DRIVE		
7	FU8-8257-000		1	LABEL, CAUTION		
8	XH9-0149-000		4	DAMPER, CUSHION		
9	XZ1-1301-005		4	SPACER		
10	FC0-7477-000		1	COVER, CONTROLLER, SMALL		
11	FM4-0783-000		1	TPM PCB ASSEMBLY		
IC	FK2-7835-010		1	IC, R8A03018ABG U100, ASIC	IC7001	
IC	FK2-7852-000		2	IC, T6TH5EFG-0002(0), STANDARD	IC7057,IC7059	
IC	FK3-1386-000		1	IC, CLOCK GENERATOR, HYBRID	IC6014	
IC	FK3-2212-000		1	IC, AU80610004671AASLBMH,	IC1	
IC	FK3-3034-000		1	IC, FZC0ZA012AA STANDARD CELL	IC8004	
IC	FK2-8321-000		1	IC, MB87S1801	IC7007	
IC	FK4-1861-000		1	IC, 88E8075-B0-NNC2C000-W553,	IC4	

FIGURE 910
POWER SUPPLY ASSEMBLY

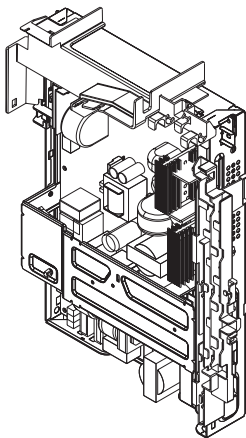


FIGURE & KEY NO.	PARTS NUMBER	R A N K	Q'TY	DESCRIPTION	SERIAL NUMBER/ REMARKS	S V C
Fig.910	FM0-0085-000		1	POWER SUPPLY ASSEMBLY	120V	
Fig.910	FM0-0053-000		1	POWER SUPPLY ASSEMBLY	230V	

FIGURE 930
DC CONTROLLER PCB ASSEMBLY

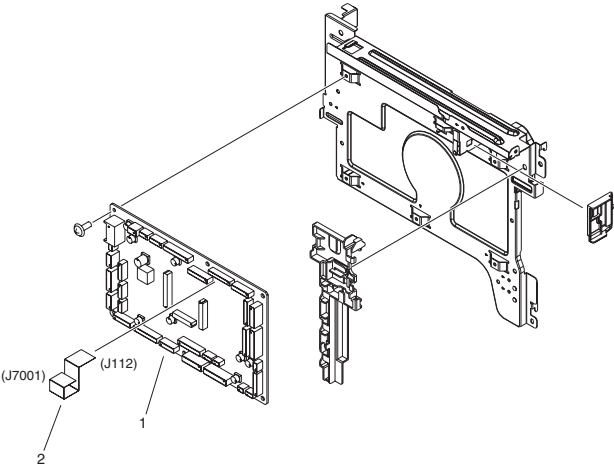


FIGURE & KEY NO.	PARTS NUMBER	RANK	Q'TY	DESCRIPTION	SERIAL NUMBER/REMARKS	SVC
Fig.930	NPN		RF	DC CONTROLLER PCB ASSEMBLY		
1	FM1-C743-000		1	DC CONTROLLER PCB ASSEMBLY		
2	FK4-0645-000		1	CABLE, FLAT		

FIGURE B01

ADF MAINTENANCE KIT

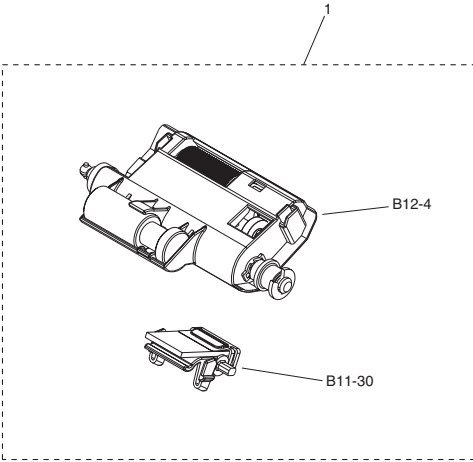


FIGURE & KEY NO.	PARTS NUMBER	RANK	Q'TY	DESCRIPTION	SERIAL NUMBER/REMARKS	SVC
Fig.B01	NPN		RF	ADF MAINTENANCE KIT		
1	FM4-9866-000		1	ADF MAINTENANCE KIT, DR-201	FOR NON-TECHNICAL PERSON	

FIGURE B10
READER/ADF ASSEMBLY

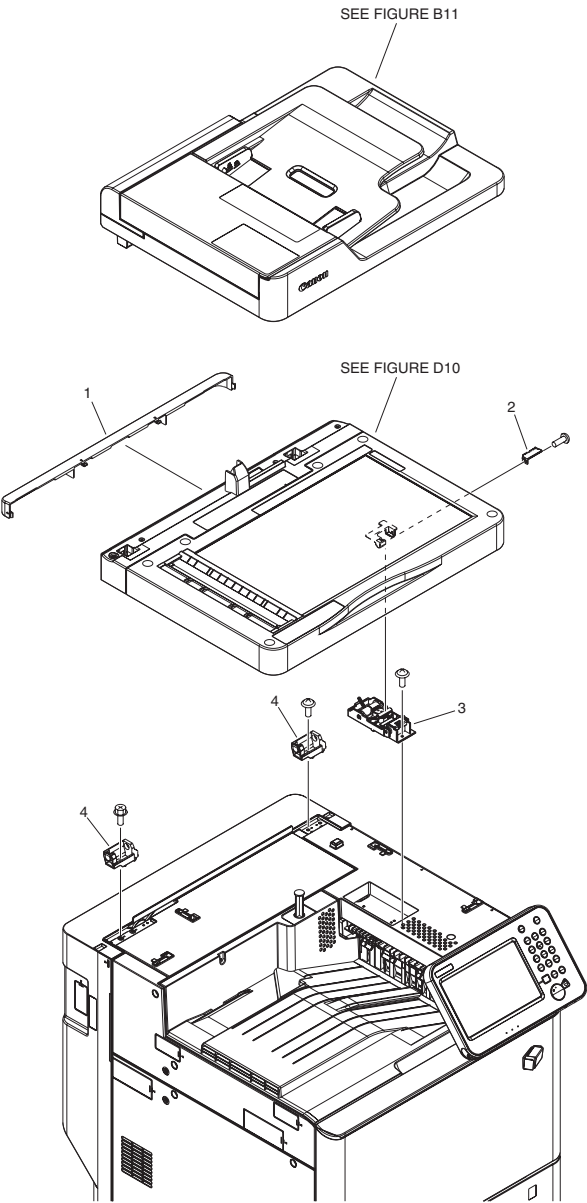
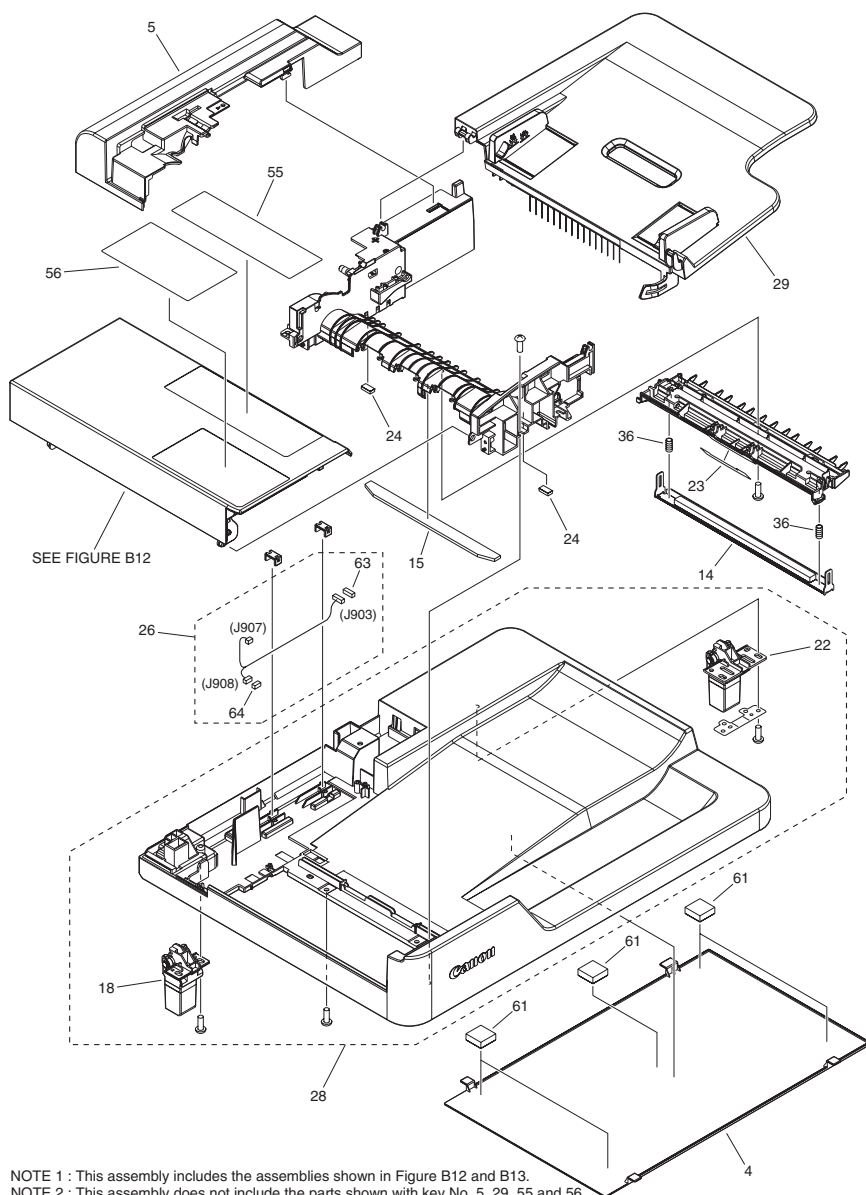


FIGURE & KEY NO.	PARTS NUMBER	R A N K	Q'TY	DESCRIPTION	SERIAL NUMBER/ REMARKS	S V C
Fig.B10	NPN		RF	READER/ADF ASSEMBLY		
1	FC0-5614-000		1	COVER, READER, REAR, 2		
2	FE3-8375-000		1	CLAMP, READER SHAFT, RIGHT		
3	FM4-9850-000		1	READER LINK ASSEMBLY		
4	FC0-5544-000		2	HINGE, READER		

FIGURE B11 AUTO DOCUMENT FEEDER ASSEMBLY



NOTE 1 : This assembly includes the assemblies shown in Figure B12 and B13.

NOTE 2 : This assembly does not include the parts shown with key No. 5, 29, 55 and 56.

注 1 : このユニットはFigure B12, B13のユニットを含みます。

注 2 : このユニットにKey No. 5, 29, 55, 56の部品は含まれません。

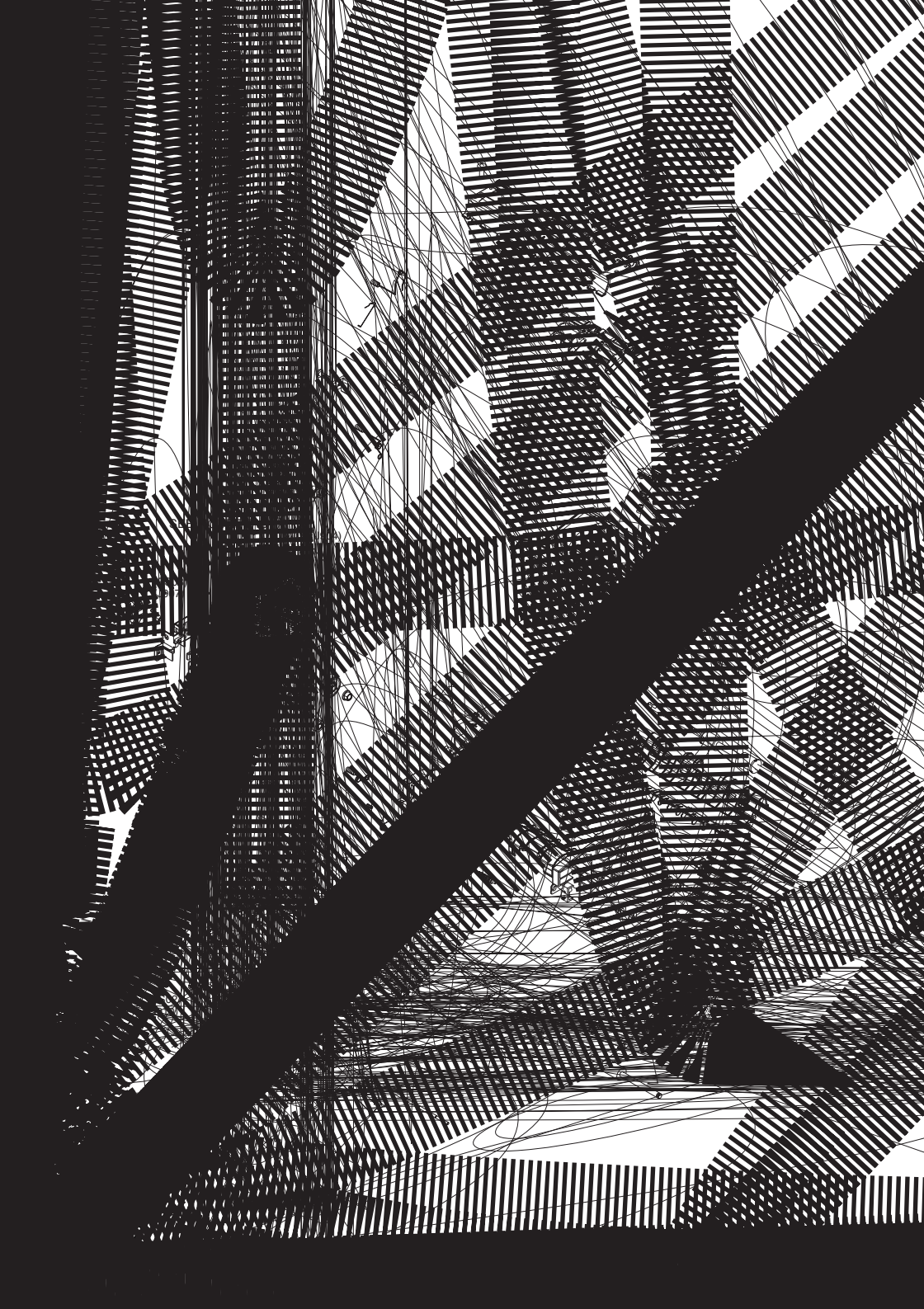
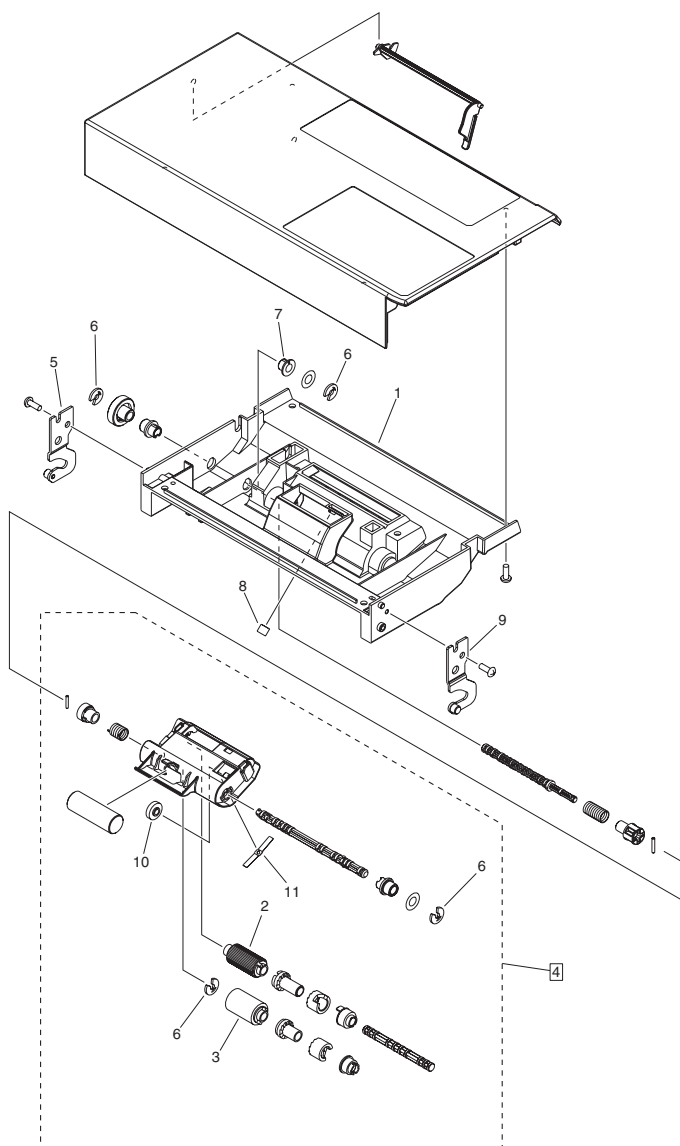


FIGURE & KEY NO.	PARTS NUMBER	R A N K	Q'TY	DESCRIPTION	SERIAL NUMBER/ REMARKS	S V C
Fig.B11	FM4-9849-000		1	AUTO DOCUMENT FEEDER ASSEMBLY	SEE NOTE 1	
1	FC0-5587-000		1	SHAFT, CAM		
2	FC0-5588-000		1	CAM, HAND		
3	FC0-5589-000		1	LEVER, ROLLER ESTRANGEMENT		
4	FC0-5591-000		1	COVER, COPYBOARD		
5	FC0-5593-000		1	COVER, ADF, REAR	SEE NOTE 2	
6	FC0-5629-000		1	STOPPER, DOCUMENT		
7	FC0-5634-000		1	COVER, SEPARATION SPRING		
8	FE4-1402-000		1	STOPPER, RATCHET SPRING		
9	FC7-6052-010		1	RATCHET, PAPER FEED ROLLER		
10	FE3-8381-000		2	ROLLER, PAPER DELIVERY		
11	FC7-6303-000		1	SPRING, TORSION		
12	FE3-6504-000		1	SHAFT		
13	FL0-1104-000		1	ROLLER, PAPER DELIVERY		
14	FL0-1105-000		1	PANEL, COPYBOARD		
15	FL0-2013-000		1	DAMPER, MAIN FRAME		
16	FL0-2020-000		1	GUIDE, FEED		
17	FL0-2021-000		1	GUIDE, PAPER DELIVERY		
18	FL3-1430-000		1	HINGE, ADF, LEFT		
19	FL3-6308-000		1	ARM, PAPER FEED SWING		
20	FL3-6309-000		1	ARM, SEPARATION SWING		
21	FL3-6311-000		1	ROLLER, DF FEED		
22	FL3-6313-000		1	HINGE, ADF, RIGHT		
23	FL3-6314-000		1	SHEET, GUIDE, LOWER		
24	FL3-6320-000		2	PAD, DAMPER		
25	FE3-8290-000		3	ROLLER, PAPER FEED		
26	FM1-C985-000		1	CABLE, ADF DETECT		
27	FM1-C986-000		1	CABLE, ADF - DES		
28	FM4-9855-000		1	ADF BASE ASSEMBLY		
29	FM4-9856-000		1	DOCUMENT TRAY ASSEMBLY	SEE NOTE 2	
30	FM4-9857-000		1	SEPARATION PAD ASSEMBLY	[DP]	
31	FM4-9858-000		1	GUIDE, UPPER		

FIGURE & KEY NO.	PARTS NUMBER	R A N K	Q'TY	DESCRIPTION	SERIAL NUMBER/ REMARKS	S V C
32	FU6-2999-000		1	SPRING, TENSION		
33	FU5-1748-000		2	BUSHING		
34	FE3-8380-000		3	ROLLER, AUXILIARY		
35	FU8-0128-000		1	GEAR, 21T		
36	FE4-0007-000		2	SPRING, COMPRESSION		
37	FU9-0237-000		1	GEAR, 18T		
38	FU9-0589-000		1	GEAR, 43T		
39	FU9-0590-000		1	GEAR, 43T		
40	FU9-0591-000		1	GEAR, 41T		
41	FU9-0592-000		1	GEAR, 57T/21T		
42	FU9-0594-000		1	GEAR, 20T		
43	FU9-2005-000		1	SPRING, TORSION		
44	FU9-2007-000		2	SPRING, COMPRESSION		
45	FU9-2008-000		1	SPRING, COMPRESSION		
46	FU9-2009-000		1	SPRING, COMPRESSION		
47	FU9-2010-000		1	SPRING, TENSION		
48	FU9-2011-000		2	SPRING, TORSION		
49	FU9-2015-000		1	SPRING, TENSION		
50	FU9-2016-000		1	SPRING, TENSION		
51	FU9-2017-000		1	SPRING, TENSION		
52	FU9-2019-000		1	SPRING, TORSION		
53	FU9-2020-000		1	SPRING, COMPRESSION		
54	WG8-5935-000		2	IC, PHOTO INTERRUPTER	PS02,PS03	
55	FE3-9826-000		1	LABEL, PROHIBITION DOCUMENT	SEE NOTE 2	
56	FE3-9827-000		1	LABEL, CLEANING INSTRUCTION	SEE NOTE 2	
57	FC0-5574-000		1	HOLDER, LEVER		
58	FE3-7698-000		1	LEVER, DRIVE RELEASE		
59	FE3-7699-000		4	RING, C,EXTERNAL		
60	FE3-8298-000		2	BUSHING		
61	FL3-6315-000		5	CUSHION, WHITE SHEET		
62	VS1-7177-002		1	CONNECTOR, SNAP TIGHT, BK		
63	VS1-7207-006		1	CONNECTOR, SNAP TIGHT, BK		

FIGURE & KEY NO.	PARTS NUMBER	R A N K	Q'TY	DESCRIPTION	SERIAL NUMBER/ REMARKS	S V C
64	VS1-7207-004		1	CONNECTOR, SNAP TIGHT, BK		

FIGURE B12 FEEDER COVER ASSEMBLY



NOTE 1 : This assembly is included in the assembly shown in Figure B11.

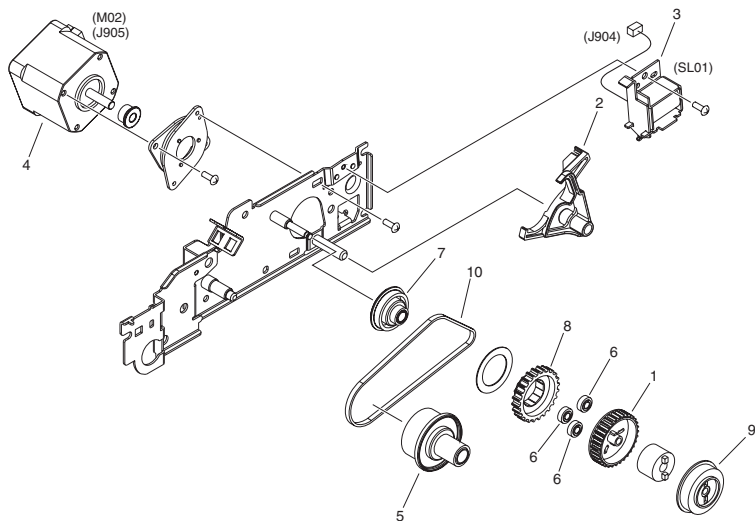
NOTE 2 : This assembly does not include the parts shown with key No. 5.

注 1 : このユニットはFigure B11のユニットに含まれます。

注 2 : このユニットにKey No. 5の部品は含まれません。

FIGURE & KEY NO.	PARTS NUMBER	R A N K	Q'TY	DESCRIPTION	SERIAL NUMBER/ REMARKS	S V C
Fig.B12	FM4-9860-000		1	FEEDER COVER ASSEMBLY	SEE NOTE 1	
1	FC0-5639-000		1	COVER, ADF INNER		
2	FC7-6189-000		1	ROLLER, PICK-UP		
3	FL2-6637-000		1	ROLLER, SEPARATION		
4	FM4-9859-000		1	ADF PAPER PICK-UP ASSEMBLY	[DP]	
5	FL0-2564-000		1	COVER, DF, REAR	SEE NOTE 2	
6	FE3-7699-000		4	RING, C,EXTERNAL		
7	FE3-8298-000		1	BUSHING		
8	FE3-9145-000		1	SPRING, COMPRESSION		
9	FL0-2565-000		1	COVER, DF, FRONT		
10	FE3-8297-000		1	GEAR, 23T		
11	FE3-8383-000		1	SPRING, LEAF		

FIGURE B13
PAPER FEED DRIVE ASSEMBLY



NOTE : This assembly is included in the assembly shown in Figure B11.
注 : このユニットはFigure B11のユニットに含まれます。

FIGURE & KEY NO.	PARTS NUMBER	R A N K	Q'TY	DESCRIPTION	SERIAL NUMBER/ REMARKS	S V C
Fig.B13	FM4-9862-000		1	PAPER FEED DRIVE ASSEMBLY	SEE NOTE	
1	FC0-5622-000		1	GEAR, 29T		
2	FC0-5623-000		1	STOPPER, CAM		
3	FK2-0408-010		1	SOLENOID	SL01	
4	FK3-2024-000		1	MOTOR, STEPPING	M02	
5	FU9-0588-000		1	GEAR, 47T/20T		
6	FU9-0595-000		3	GEAR, 16T		
7	FU9-0596-000		1	PULLEY		
8	FU9-0597-000		1	GEAR, 52T		
9	FU9-0598-000		1	GEAR, 55T		
10	XF2-1611-830		1	BELT, TIMING, COGGED		

FIGURE D10
READER ASSEMBLY

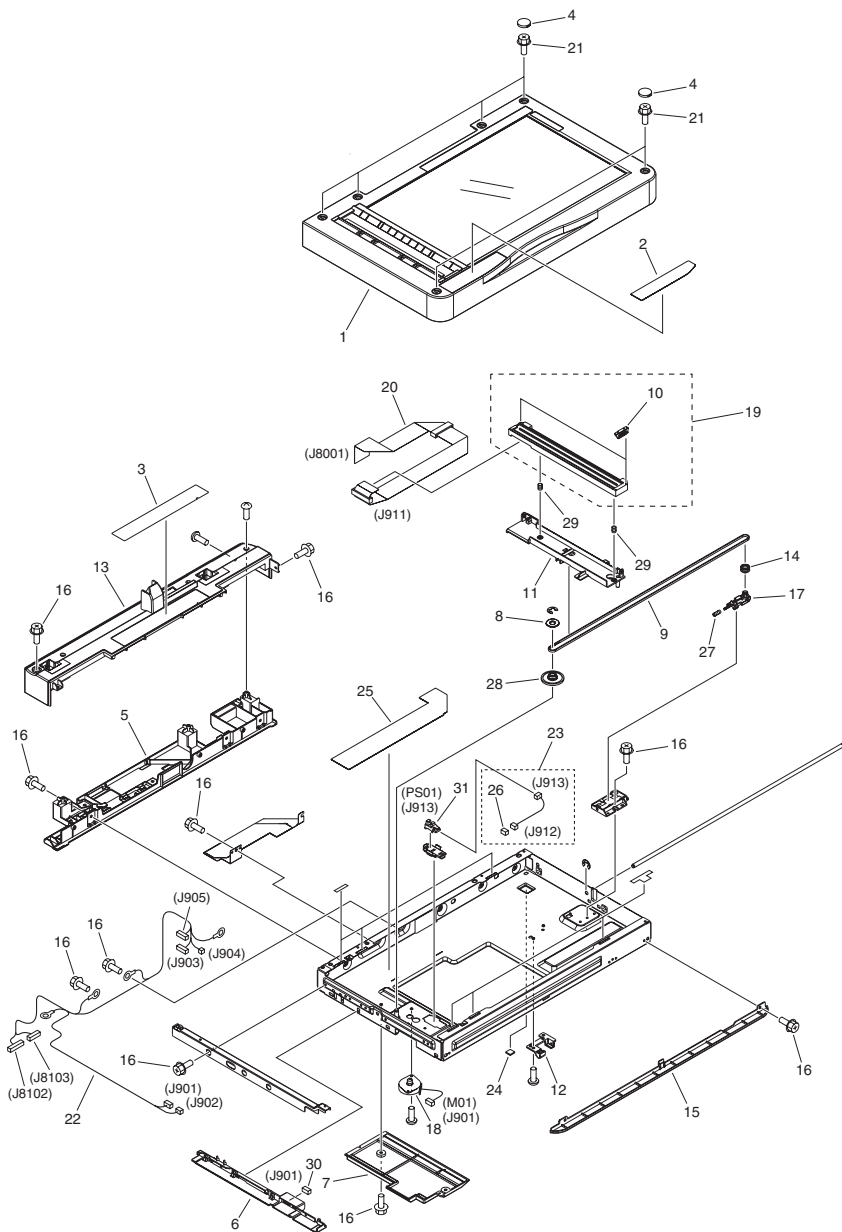


FIGURE & KEY NO.	PARTS NUMBER	R A N K	Q'TY	DESCRIPTION	SERIAL NUMBER/ REMARKS	S V C
Fig.D10	NPN		RF	READER ASSEMBLY		
1	FM1-G152-000		1	COVER, READER, FRONT		
2	FU2-0805-000		1	LABEL, BLACK LINE, CLEANING		
3	FU7-8085-000		1	LABEL, COPY INHIBITED	US English	
3	FU7-8086-000		1	LABEL, COPY INHIBITED	Canadian French	
3	FU7-8087-000		1	LABEL, COPY INHIBITED	Portuguese	
3	FU7-8227-000		1	LABEL, COPY INHIBITED	Spanish	
3	FU7-8228-000		1	LABEL, COPY INHIBITED	UK English	
3	FU7-8229-000		1	LABEL, COPY INHIBITED	French	
3	FU7-8230-000		1	LABEL, COPY INHIBITED	German	
3	FU7-8231-000		1	LABEL, COPY INHIBITED	Italian	
4	FC0-0695-000		6	CAP		
5	FC0-5542-000		1	COVER, LOWER		
6	FC0-5547-000		1	GUIDE, CABLE		
7	FC0-5548-000		1	COVER, MOTOR		
8	FC0-5550-000		1	STOPPER, BELT		
9	FC0-5553-000		1	BELT, TIMING, COGGED		
10	FE3-6571-000		2	SPACER, CONTACT IMAGE SENSOR	RANK A	
10	FC0-5554-000		2	SPACER, CONTACT IMAGE SENSOR	RANK B	
10	FE3-6570-000		2	SPACER, CONTACT IMAGE SENSOR	RANK C	
11	FC0-5555-000		1	HOLDER, CONTACT IMAGE SENSOR		
12	FC0-5557-000		1	BUSHING		
13	FL0-3924-000		1	COVER, READER, REAR, 1		
14	FC0-5650-000		1	PULLEY, IDLER		
15	FC0-5651-000		1	COVER, READER, FRONT LOWER		
16	XA9-1386-000		AR	SCREW,RS,M3X8		
17	FC0-5552-000		1	HOLDER, PULLEY, IDLER		
18	FK3-3035-000		1	MOTOR, STEPPING	M01	
19	FM1-H164-000		1	CONTACT IMAGE SENSOR ASSEMBLY	C351iF,C350i,C350iF	
19	FM1-H163-000		1	CONTACT IMAGE SENSOR ASSEMBLY	C250i,C250iF	
20	FK3-3038-000		1	CABLE, FLAT		
21	XA9-1449-000		6	SCREW, RS, M3X8		

FIGURE & KEY NO.	PARTS NUMBER	R A N K	Q'TY	DESCRIPTION	SERIAL NUMBER/ REMARKS	S V C
22	FM1-C984-000		1	CABLE, READER MAIN		
23	FM1-C987-000		1	CABLE, HOME POSITION SENSOR		
24	FL0-2019-000		1	FOOT, READER		
25	FL3-6317-000		1	SHEET, INSULATING		
26	VS1-7207-003		1	CONNECTOR, SNAP TIGHT, BK		
27	FU6-2873-000		1	SPRING, COMPRESSION		
28	FU9-0581-000		1	GEAR, 85T/20T		
29	FU9-2023-000		2	SPRING, COMPRESSION		
30	VS1-7177-004		1	CONNECTOR, SNAP TIGHT, BK		
31	WG8-5935-000		1	IC, PHOTO INTERRUPTER	PS01	

FIGURE T20
FAX ASSEMBLY (FAX model)

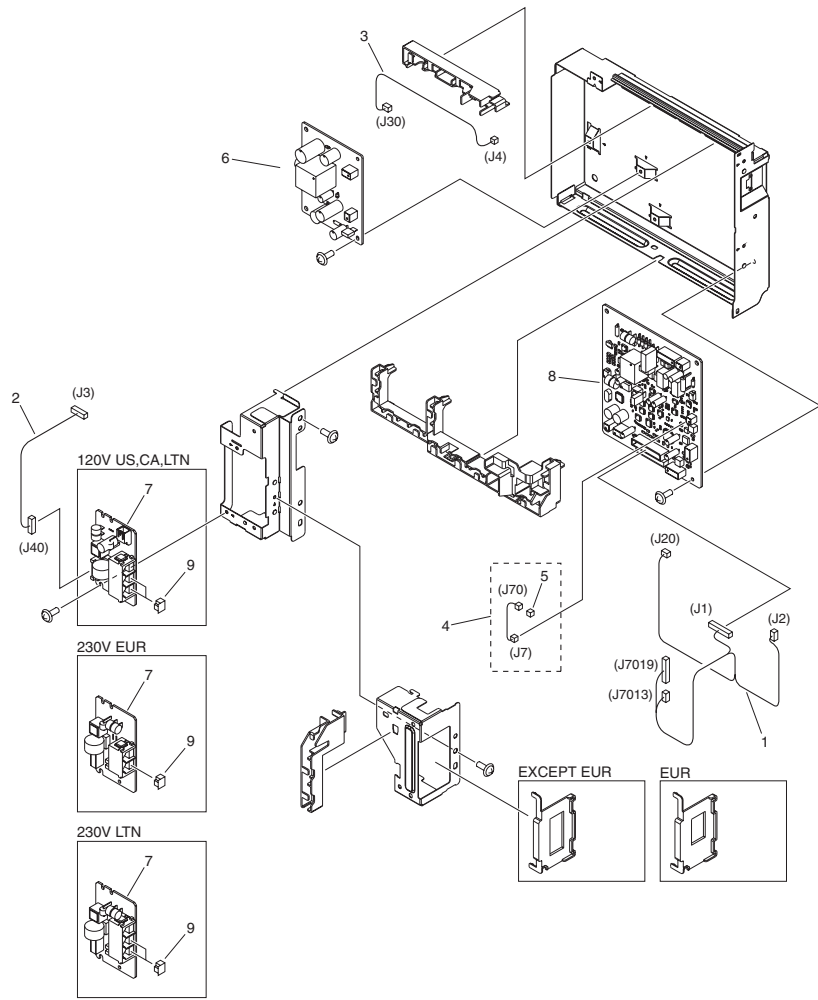


FIGURE & KEY NO.	PARTS NUMBER	R A N K	Q'TY	DESCRIPTION	SERIAL NUMBER/ REMARKS	S V C
Fig.T20	NPN		RF	FAX ASSEMBLY	FAX model	
1	FM1-D943-000		1	CABLE, FAX SIGNAL		
2	FM1-D944-000		1	CABLE, 1 CIRCUIT MODULAR		
3	FM1-D945-000		1	CABLE, HIGH VOLTAGE		
4	FM1-D946-000		1	CABLE, 1 CIRCUIT SPEAKER		
5	VS1-7177-002		1	CONNECTOR, SNAP TIGHT, BK		
6	FM3-2163-000		1	OFF-HOOK DETECT PCB ASSEMBLY		
7	FM4-0834-000		1	MODULAR PCB ASS'Y, 1 CIRCUIT	120V US,CA,LTN	
7	FM4-0835-000		1	MODULAR PCB ASS'Y, 1 CIRCUIT	230V EUR	
7	FM1-G905-000		1	MODULAR PCB ASS'Y, 1 CIRCUIT	230V LTN	
8	FM4-0838-010		1	1 LINE PCB ASSEMBLY	EXCEPT EUR	
8	FM4-0856-010		1	1 LINE PCB ASSEMBLY	EUR	
9	WT8-5076-000		2	SPACER,MODULAR		

FIGURE T21
SPEAKER (FAX model)

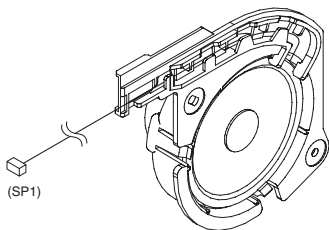


FIGURE & KEY NO.	PARTS NUMBER	R A N K	Q'TY	DESCRIPTION	SERIAL NUMBER/ REMARKS	S V C
Fig.T21	FM0-0059-000		1	SPEAKER	FAX model SP1	

FIGURE ZZA

MECHANICAL STANDARD PARTS (HOW TO USE)

Mechanical standard parts

機械標準部品

About a mechanical standard parts

A Mechanical standard parts is a mechanical part which not parts peculiar to a product.
They are parts which are common to a Canon product and are used, such as a screw and a washer.
The Fig No. and parts number of the mechanical standard parts are not listed in the product parts catalog.
Refer to the parts catalog of mechanical standard parts when checking the parts number for screw or washer etc. and identify them by part shape or size.

機械標準部品とは
機械標準部品と

Material and surface treatment of a mechanical standard parts

Material and surface treatment of mechanical standard parts are assigned commonly for each part.
Refer to the Table 1 for the parts which material and surface treatment are assigned as numbers.

Table 1 Material and Surface treatment
表1 材料および表面処理

No. 番号	Material 材料	Surface treatment 表面処理	Color 色
1	Stainless steel ステンレス	Stainless steel black coloring (BC4) ステンレス黒着色(BC4)	Black 黒
2		not to be given なし	White 白
3	Brass 黄銅	Regular nickel plating (NL) 普通ニッケルメッキ(NL)	White 白
4		Black nickel plating (BN) 黒色ニッケルメッキ(BN)	Black 黒
5	Steel 鋼	White zinc trivalent chromate treating (ZC3) 白色亜鉛3価クロメート(ZC3)	White 白
6		Regular nickel chromium plating (NC) 普通ニッケルクロムメッキ(NC)	White 白
7		Regular nickel plating (NL) 普通ニッケルメッキ(NL)	White 白
8		Iron and steel phosphating (P1) 鉄鋼磷酸塩処理(P1)	Black 黒
9		Black zinc trivalent chromate treating (BZ3) 黒色亜鉛3価クロメート(BZ3)	Black 黒

FIGURE ZZB

MECHANICAL STANDARD PARTS (SCREWS)

1. Screws ねじ

How to read Parts Numbers
部品番号の見方

Screws
ねじ

XB1-2400-609

Type No.
類別番号
Normal designation (d)
ねじの呼び (d)
Length (L)
ねじの長さ (L)
Material and Surface treatment
材料および表面処理

XB1-2 expresses Binding head machine screw.
XB1-2は、バインドねじを表す

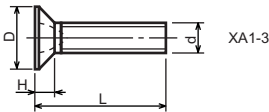
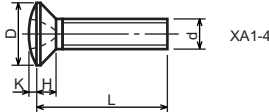
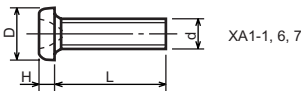
40 expresses M4.0.
40は、M4.0を表す

0-60 expresses a length of 6.0mm.
0-60は、6.0mmの長さを表す

9 expresses Steel (Black zinc trivalent chromate
treating) from Table 1.

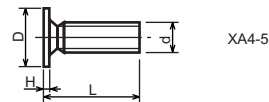
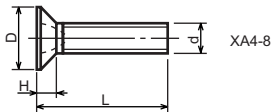
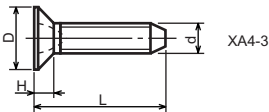
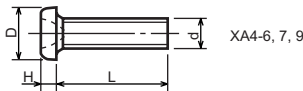
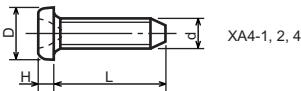
9は、表1より鋼 (黒色亜鉛3価クロメート) を表す

1-1. Cross Recessed Head Screws for Precision Equipments 精密機器用十字穴付き小ねじ



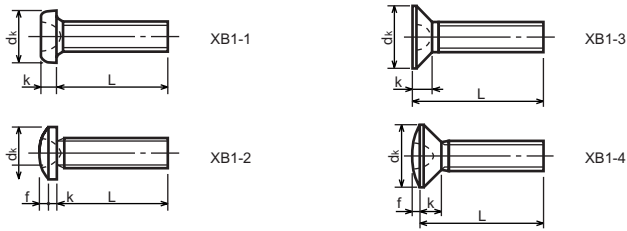
Type No. 類別番号	Type 類別	Head size (mm) 頭部寸法 (mm)						
		M1.4	M1.6	M1.7	M2	M2.5	M2.6	
XA1-1	Pan head Class 1 なべ1種	D XA1-1	2	2.4	2.5	3	3.8	4
		H XA1-1	0.5	0.55	0.5	0.6	0.9	0.8
XA1-3	Countersunk head Class 1 さら1種	D XA1-3	2	2.4	2.5	3	3.8	4
		H XA1-3	0.48	0.55	0.58	0.73	0.85	0.93
XA1-4	Oval countersunk head Class 1 丸さら1種	D XA1-4	2	2.4	2.5	3	3.8	4
		H + K XA1-4	0.68	0.8	0.88	1	1.25	1.3
XA1-6	Pan head Class 3 なべ3種	D XA1-6	2.5	2.8	3	3.5	4.3	4.5
		H XA1-6	0.8	0.85	0.9	1	1.3	1.2
XA1-7	Pan head Class 2 なべ2種	D XA1-7	2.5	2.8	3	3.5	4.3	4.5
		H XA1-7	0.5	0.55	0.5	0.6	0.9	0.8

1-2. Precision Tapping Screws
精密用タッピンねじ



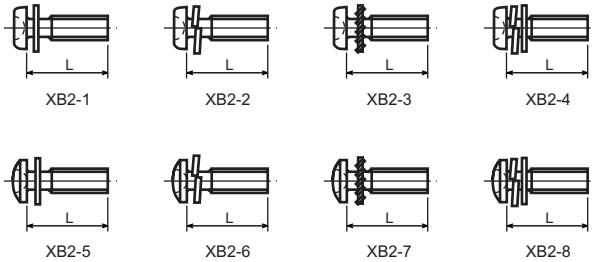
Type No. 類別番号	Type 類別	Head size (mm) 頭部寸法 (mm)						
		M1.4	M1.6	M1.7	M2	M2.5	M2.6	
XA4-1	With tapered end pan head Class 1 絞りなべ1種	D XA4-1	2	2.4	2.5	3	3.8	4
		H XA4-1	0.5	0.55	0.5	0.6	0.9	0.8
XA4-2	With tapered end pan head Class 3 絞りなべ3種	D XA4-2	2.5	2.8	3	3.5	4.3	4.5
		H XA4-2	0.8	0.85	0.9	1	1.3	1.2
XA4-3	With tapered end countersunk head 絞り-さら	D XA4-3	2	2.4	2.5	3	3.8	4
		H XA4-3	0.48	0.55	0.58	0.73	0.85	0.93
XA4-4	With tapered end pan head Class 2 絞りなべ2種	D XA4-4	2.5	2.8	3	3.5	4.3	4.5
		H XA4-4	0.5	0.55	0.5	0.6	0.9	0.8
XA4-5	With parallel end ultra thin head ストレート-超薄頭	D XA4-5	2.5	2.8	3	-	-	-
		H XA4-5	0.2	0.2	0.2	-	-	-
XA4-6	With parallel end pan head Class 1 ストレートなべ1種	D XA4-6	2	2.4	2.5	3	3.8	4
		H XA4-6	0.5	0.55	0.5	0.6	0.9	0.8
XA4-7	With parallel end pan head Class 3 ストレートなべ3種	D XA4-7	2.5	2.8	3	3.5	4.3	4.5
		H XA4-7	0.8	0.85	0.9	1	1.3	1.2
XA4-8	With parallel end countersunk head ストレート-さら	D XA4-8	2	2.4	2.5	3	3.8	4
		H XA4-8	0.48	0.55	0.58	0.73	0.85	0.93
XA4-9	With parallel end pan head Class 2 ストレートなべ2種	D XA4-9	2.5	2.8	3	3.5	4.3	4.5
		H XA4-9	0.5	0.55	0.5	0.6	0.9	0.8

1-3. Cross Recessed Head Screws
 一般用十字穴付き小ねじ



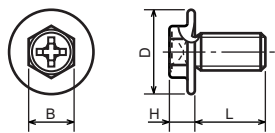
Type No. 類別番号	Type 類別	Head size (mm) 頭部寸法 (mm)						
		M2	M2.5	M2.6	M3	M4	M5	
XB1-1	Pan head なべ	d _k XB1-1	3.5	4.5	4.5	5.5	7	9
		k XB1-1	1.3	1.7	1.7	2	2.6	3.3
XB1-2	Binding head バインド	d _k XB1-2	4.3	5.3	5.5	6.3	8.3	10.3
		k+f XB1-2	1.2	1.5	1.6	1.9	2.5	3.1
XB1-3	Countersunk head さら	d _k XB1-3	4	5	-	6	8	10
		k XB1-3	1.2	1.45	-	1.75	2.3	2.8
XB1-4	Oval countersunk head 丸さら	d _k XB1-4	4	5	-	6	8	10
		k+f XB1-4	1.6	2	-	2.45	3.2	4
		Screw part length ねじ部長さ b	8	12	12	12	16	20

1-4. Cross Recessed Head Screws with Captive Washer
 座金組込み十字穴付き小ねじ



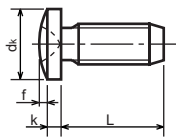
Type No. 類別番号	Type 類別
XB2-1	Pan head + Plain washer (circular bright) なべねじ+平座金
XB2-2	Pan head + Spring washer なべねじ+ばね座金
XB2-3	Pan head + Toothed lock washer なべねじ+歯付座金
XB2-4	Pan head + Spring washer and plain washer (circular bright) なべねじ+(ばね+平)座金
XB2-5	Binding head + Plain washer (circular bright) バインドねじ+平座金
XB2-6	Binding head + Spring washer バインドねじ+ばね座金
XB2-7	Binding head + Toothed lock washer バインドねじ+歯付座金
XB2-8	Binding head + Spring washer and plain washer (circular bright) バインドねじ+(ばね+平)座金

1-5. Hexagon Head Tapping Screws for Matallic Materials
 金属用六角タッピンねじ



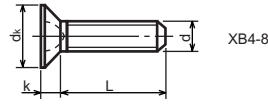
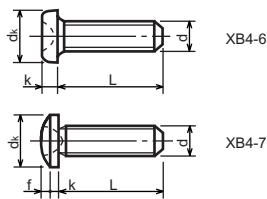
Type No. 類別番号	Type 類別	Head size (mm) 頭部寸法 (mm)	
		M3	M4
XB3-6	For metallic materials 金属用タッピン	D	8 10
		B	5.5 5.5
XB3-7	For metallic materials with clawed 金属用タッピン-つめ付き	H XB3-6	3.1 3.1
		H XB3-7	3.2 3.2

1-6. Special Tapping Screws
 特殊タッピンねじ



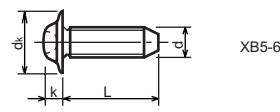
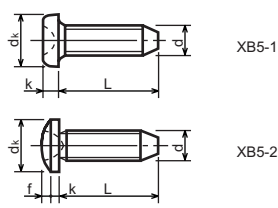
Type No. 類別番号	Type 類別	Head size (mm) 頭部寸法 (mm)	
		M3	M4
XB4-5	Binding head バインド	d _k	6.3 8.3
		k	1.3 1.7
		k+f	1.9 2.5

1-7. General Head Tapping Screws
一般用タッピンねじ



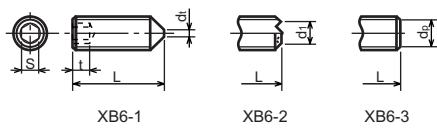
Type No. 類別番号	Type 類別	Head size (mm) 頭部寸法 (mm)						
		M2	M2.5	M2.6	M3	M4	M5	
XB4-6	Pan head なべ	d _k XB4-6	3.5	4.5	4.5	5.5	7	9
		k XB4-6	1.3	1.7	1.7	2	2.6	3.3
XB4-7	Binding head バインド	d _k XB4-7	4.3	5.3	5.5	6.3	8.3	10.3
		k+f XB4-7	1.2	1.5	1.6	1.9	2.5	3.1
XB4-8	Countersunk head さら	d _k XB4-8	4	5	5.2	6	8	10
		k XB4-8	1.2	1.45	1.5	1.75	2.3	2.8

1-8. Tapping Screws for Metallic Materials
金属用タッピンねじ



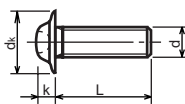
Type No. 類別番号	Type 類別	Head size (mm) 頭部寸法 (mm)					
		M2.5	M2.6	M3	M4	M5	
XB5-1	Pan head なべ	d _k XB5-1	4.5	4.5	5.5	7	9
		k XB5-1	1.7	1.7	2	2.6	3.3
XB5-2	Binding head バインド	d _k XB5-2	5.5	5.5	6.3	8.3	10.3
		k+f XB5-2	1.6	1.6	1.9	2.5	3.1
XB5-6	Flanged pan head つば付きなべ	d _k XB5-6	6.5	6.5	8	10	12
		k XB5-6	2.1	2.1	1.75	3.2	4

1-9. Hexagon Socket Set Screws
 六角穴付止めねじ



Type No. 類別番号	Type 類別	Head size (mm) 頭部寸法 (mm)							
		M1.6 M1.7	M2	M2.5 M2.6	M3	M5	M5	M6	
XB6-1	Cone point とがり先	S	0.7	0.9	1.3	1.5	2	2.5	3
		t	1.5	1.7	2	2	2.5	3	3.5
		d _{t max} XB6-1	0.4	0.5	0.65	0.75	1	1.25	1.5
XB6-2	Double point ダブルポイント	d _{t max} XB6-2	-	1.2	1.5	1.7	2.2	2.8	3.3
		d _{t min} XB6-2	-	1	1.2	1.4	1.9	2.4	2.9
XB6-3	Flat point 平先	d _{p max} XB6-3	0.8	1	1.5	2	2.5	3.5	4
		d _{p min} XB6-3	0.55	0.75	1.25	1.75	2.25	3.2	3.7

1-10. Flanged Pan Head Machine Screws
 つば付きなべ小ねじ



		Head size (mm) 頭部寸法 (mm)					
Type No. 類別番号	Type 類別	M2	M2.5 M2.6	M3	M5	M5	
XB6-7	Flanged pan head つば付きなべ	d _s	5	6.5	8	10	12
		k	1.7	2.1	2.5	3.2	4

FIGURE ZZC

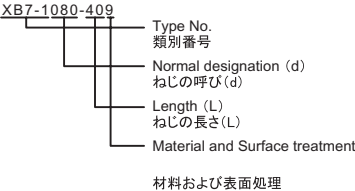
MECHANICAL STANDARD PARTS (BOLTS)

2. Bolts (Socket head cap screw)

ボルト

How to read Parts Numbers
部品番号の見方

Bolt (Socket head cap screw)
ボルト



XB7-1 expresses Hexagon socket head cap screws.
XB7-1は、六角穴付きボルトを表す

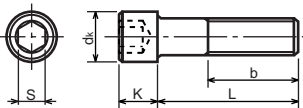
080 expresses M8.0.
080は、M8.0を表す

40 expresses a length of 40mm.
40は、40mmの長さを表す

9 expresses Steel (Black zinc trivalent chromate treating) from Table 1.
9は、表1より鋼 (黒色亜鉛3価クロメート)を表す

2-1. Hexagon socket head cap screws

六角穴付きボルト



Type No. 類別番号	Type 類別
XB7-1	Hexagon socket head cap screws 六角穴付きボルト

	Head size (mm) 頭部寸法 (mm)						
	M3	M4	M5	M6	M8	M10	M12
S	2.5	3	4	5	6	8	10
d _k	5.5	7	8.5	10	13	16	18
K	3	4	5	6	8	10	12
Screw part length ねじ部長さ b _{max}	18	20	22	24	28	32	36

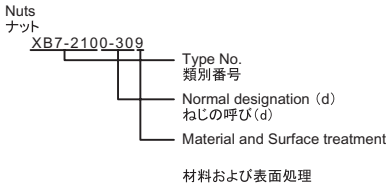
FIGURE ZZD

MECHANICAL STANDARD PARTS (NUTS)

3. Nuts

ナット

How to read Parts Numbers
 部品番号の見方



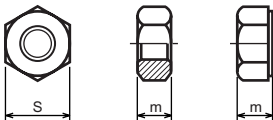
XB7-210 expresses Hexagon nut class 1.
 XB7-210は、六角ナット1種を表す

0-30 expresses M3.0.
 0-30は、M3.0を表す

9 expresses Steel (Black zinc trivalent chromate treating) from Table 1.
 9は、表1より鋼（黒色亜鉛3価クロメート）を表す

3-1. Hexagon Nuts and Hexagon Thin Nuts

六角ナット



Type No. 類別番号	Type 類別
XB7-210	Hexagon nut Class 1 六角ナット-1種
XB7-220	Hexagon nut Class 3 六角ナット-3種
XB7-230	Hexagon nut Style 1 double chamfered 六角ナットスタイル1-両面とり
XB7-231	Hexagon nut Style 1 washer faced 六角ナットスタイル1-座付き
XB7-240	Hexagon nut Style 2 double chamfered 六角ナットスタイル2-両面とり
XB7-241	Hexagon nut Style 2 washer faced 六角ナットスタイル2-座付き
XB7-250	Hexagon nut 六角ナット
XB7-260	Hexagon thin nut double chamfered 六角低ナット-両面とり
XB7-270	Hexagon thin nut not chamfered 六角低ナット-面とり無し

	Head size (mm) 頭部寸法 (mm)						
	M2	M2.5	M3	M4	M5	M6	M8
S	4	5	5.5	7	8	10	13
m XB7-210	1.6	2	2.4	3.2	4	5	6.5
m XB7-220	1.2	1.6	1.8	2.4	3.2	3.6	5
m XB7-230, 231	1.6	2	2.4	3.2	4.7	5.2	6.8
m XB7-240, 241	-	-	-	-	5.1	5.7	7.5
m XB7-250	-	-	-	-	5.6	6.1	7.9
m XB7-260	1.2	1.6	1.8	2.2	2.7	3.2	4
m XB7-270	1.2	1.6	1.8	2.2	2.7	3.2	4

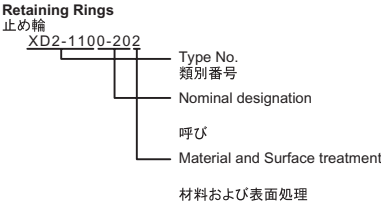
FIGURE ZZE

MECHANICAL STANDARD PARTS (RETAINING RINGS)

5. Retaining Rings

止め輪

How to read Parts Numbers
部品番号の見方



XD2-110 expresses retaining ring-E type (Type1).
XD2-110は、E形止め輪 (1種)を表す

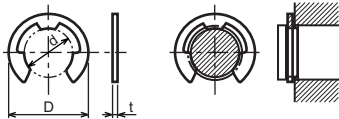
0-20 expresses a 020 of nominal designation.
(See Table 5)

0-20は、呼び020を表す (表5参照)

2 expresses Stainless steel (Surface treatment is not to be given) from Table 1.
2は、表1よりステンレス (表面処理なし)を表す

5-1. Retaining Rings - E type

E形止め輪

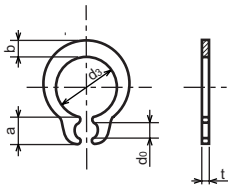


Type No. 類別番号	Type 類別
XD2-110	Retaining ring - E type (Type 1) E形止め輪 (1種)
XD2-120	Retaining ring - E type (Type 2) E形止め輪 (2種)

Table 5 表5

Type 種類	Nominal designation 呼び	d (mm)	D (mm)	t (mm)
Type 1 1種	007	0.65	2	0.2
	010	0.95	2.8	0.2
	013	1.25	3.3	0.3
	017	1.65	4.2	0.4
	020	1.95	4.6	0.5
	024	2.35	6	0.6
	028	2.74	6.5	0.6
	032	3.14	7.2	0.6
	037	3.64	8	0.7
	040	3.93	10	0.7
	042	4.13	10	0.7
	050	4.93	11	0.7
	058	5.73	12	0.7
	060	5.93	12.7	0.9
	064	6.32	13.5	0.9
	074	7.31	15	0.9
	080	7.91	16.5	1
Type 2 2種	008	0.8	2	0.2
	012	1.2	3	0.3
	015	1.5	4	0.4
	020	2	5	0.4
	025	2.5	6	0.4
	030	3	7	0.6
	040	4	9	0.6
	050	5	11	0.6
	060	6	12	0.8
	070	7	14	0.8
	080	8	16	0.8
	090	9	18	0.8
	100	10	20	1

5-2. Grip Rings
グリップ止め輪

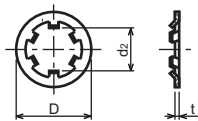


Type No. 類別番号	Type 類別
XD2-210	Grip ring グリップ止め輪

Table 5 表5

Nominal designation 呼び	d ₃ (mm)	t (mm)	b (mm)	a (mm)	d ₀ (mm)
020	1.9	0.5	1	1.8	0.8
025	2.35	0.5	1.2	1.9	0.9
030	2.85	0.6	1.4	1.9	0.9
035	3.3	0.6	1.6	2	0.9
040	3.8	0.8	1.8	2.8	1.2
045	4.25	0.8	2	2.9	1.3
050	4.75	0.8	2.2	2.9	1.3
060	5.7	1	2.4	3.1	1.4
070	6.7	1	2.7	3.3	1.4
080	7.7	1	3	3.5	1.4
090	8.65	1.2	3.3	4.7	1.5
100	9.65	1.2	3.5	4.7	2

5-3. Toothed Retaining Rings
歯付き形止め輪

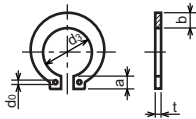


Type No. 類別番号	Type 類別
XD2-230	Toothed retaining ring 歯付き形止め輪

Table 5 表5

Nominal designation 呼び	d ₂ (mm)	D (mm)	t (mm)	No of teeth 歯数
015	1.4	5.2	0.25	3
020	1.9	6	0.25	3
024	2.3	6.4	0.25	3
030	2.8	8	0.25	4
040	3.8	9	0.25	4
050	4.8	10	0.25	5
060	5.8	11	0.25	5
080	7.8	13	0.25	5
100	9.8	15.4	0.25	6

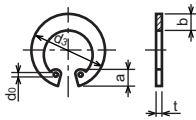
5-4. Retaining Rings - C Type
C形止め輪



Type No. 類別番号	Type 類別
XD2-310	Retaining ring - C type for shaft C形止め輪 軸用

Table 5 表5

Nominal designation 呼び	d ₃ (mm)	t (mm)	b (mm)	a (mm)	d ₀ (mm)
010	9.3	1	1.6	3	1.2
012	11.1	1	1.8	3.2	1.5
014	12.9	1	2	3.4	1.7
015	13.8	1	2.1	3.5	1.7
016	14.7	1	2.2	3.6	1.7
017	15.7	1	2.2	3.7	1.7
018	16.5	1.2	2.6	3.8	1.7
020	18.5	1.2	2.7	3.9	2
022	20.5	1.2	2.7	4.1	2
025	23.2	1.2	3.1	4.3	2
028	25.9	1.5	3.1	4.6	2
030	27.9	1.5	3.5	4.8	2
032	29.6	1.5	3.5	5	2.5
035	32.2	1.5	4	5.4	2.5



Type No. 類別番号	Type 類別
XD2-320	Retaining ring - C type for hole C形止め輪 穴用

Table 5 表5

Nominal designation 呼び	d ₃ (mm)	t (mm)	b (mm)	a (mm)	d ₀ (mm)
010	10.7	1	1.8	3.1	1.2
011	11.8	1	1.8	3.2	1.2
012	13	1	1.8	3.3	1.5
014	15.1	1	2	3.6	1.7
016	17.3	1	2	3.7	1.7
018	19.5	1	2.5	4	1.7
019	20.5	1	2.5	4	2
020	21.5	1	2.5	4	2
022	23.5	1	2.5	4.1	2
025	26.9	1.2	3	4.4	2
028	30.1	1.2	3	4.6	2
030	32.1	1.2	3	4.7	2
032	34.4	1.2	3.5	5.2	2.5
035	37.8	1.5	3.5	5.2	2.5
037	39.8	1.5	3.5	5.2	2.5
040	43.5	1.8	4	5.7	2.5
042	45.5	1.8	4	5.8	2.5
045	48.5	1.8	4.5	5.9	2.5
047	50.5	1.8	4.5	6.1	2.5
050	54.2	2	4.5	6.5	2.5
052	56.2	2	5.1	6.5	2.5
055	59.2	2	5.1	6.5	2.5
060	64.2	2	5.1	6.8	2.5
062	66.2	2	5.5	6.9	2.5
068	72.5	2.5	6	7.4	2.5
072	76.5	2.5	6.6	7.4	2.5
075	79.5	2.5	6.6	7.8	2.5
080	85.5	2.5	7	8	2.5
085	90.5	3	7	8	3
090	95.5	3	7.6	8.3	3
095	100.5	3	8	8.5	3

Prepared by
OIP Business Support Group
CANON INC.

Canon