

PARTS CATALOG

**PC-D320/PC-D340/FAX-
L400**



Canon

Mar 17 2004

PREFACE

This Parts Catalog contains listings of parts used

Diagrams are provided with the listings to aid the service technician in identifying clearly, the item to be ordered.

Whenever ordering parts, consult this Parts Catalog for all of the information pertaining to each item. Be sure to include, in the Parts Request, the full item description, the item part number, and the quantity.

COPYRIGHT (C) 1999 CANON INC.

Use of this manual should be
strictly supervised to avoid
disclosure of confidential
information.

Contents

Parts List Index

PC-D320/PC-D340/FAX-L400/imageCLASS D320/D323/D380/D383 1-1

PC-D320/PC-D340/FAX-L400/imageCLASS D320/D323/D380/D383

01	PC-D320, imageCLASS D320/D323 PACKAGE CONTENTS	2-1
02	PC-D340 PACKAGE CONTENTS	2-3
03	FAX-L400, imageCLASS D380/D383 PACKAGE CONTENTS ..	2-5
04	PC-D340, FAX-L400, imageCLASS D380/D383 FRONT COVER, LEFT COVER, COPY BOARD COVER	2-7
05	PC-D320, imageCLASS D320/D323 FRONT COVER, LEFT COVER, COPY BOARD COVER	2-9
06	RIGHT COVER, CARTRIDGE COVER	2-11
07	OPERATION PANEL ASS'Y, SCNT BOARD, ECNT BOARD ..	2-13
08	DOCUMENT FEED ASS'Y, FLAT BED ASS'Y	2-16
09	CHASSIS UNIT, EJECT PAPER FRAME ASS'Y	2-18
10	LASER/SCANNER ASS'Y, FIXING ASS'Y	2-20
11	PAPER PICK-UP ASS'Y	2-22
12	PAPER FEED SECTION 1	2-24
13	PAPER FEED SECTION 2	2-26
14	PAPER TRAY ASS'Y	2-28
15	PC-D340/FAX-L400, imageCLASS D380/D383 COPY BOARD COVER ASS'Y	2-30
16	PC-D320, imageCLASS D320/D323 COPY BOARD COVER ASS'Y 2- 32	
17	PC-D320, imageCLASS D320/D323, PC-D340 OPERATION PANEL ASS'Y	2-34
18	FAX-L400, imageCLASS D380/D383 OPERATION PANEL ASS'Y 2- 36	
19	PC-D340, FAX-L400, imageCLASS D380/D383 DOCUMENT FEED ASS'Y	2-38
20	PC-D340, FAX-L400, imageCLASS D380/D383 MIDDLE DOCUMENT FEED ASS'Y	2-40
21	PC-D340, FAX-L400, imageCLASS D380/D383 LOWER DOCUMENT FEED ASS'Y	2-42
22	PC-D340, FAX-L400, imageCLASS D380/D383 DOCUMENT FEED MOTOR ASS'Y	2-44
23	PC-D340, FAX-L400, imageCLASS D380/D383 DOCUMENT FEED GEAR ASS'Y	2-46
24	DOCUMENT READ SECTION	2-48
25	PC-D340, FAX-L400, imageCLASS D380/D383 ADF BASE ASS'Y 2- 50	

Contents

26	FLAT BED ASS'Y	2-52
27	CONTACT SENSOR	2-54
28	EJECT PAPER FRAME ASS'Y	2-56
29	FIXING ASS'Y	2-58
30	FRONT PLATE ASS'Y	2-61
31	REAR PLATE ASS'Y	2-63
32	PC-D320, imageCLASS D320/D323, PC-D340 SCNT BOARD ASS'Y 2-65	
33	FAX-L400, imageCLASS D380/D383 SCNT BOARD ASS'Y ...	2-67
34	ECNT BOARD ASS'Y	2-69
35	FAX-L400, imageCLASS D380/D383 NCU BOARD ASS'Y	2-71
36	MODULAR/USB BOARD ASS'Y	2-73
37	TOOLS	2-75

NUMERICAL INDEX

PC-D320/PC-D340/FAX-L400/imageCLASS D320/D323/D380/D383

PARTS NUMBER	FIGURE & KEY NO.	PARTS NUMBER	FIGURE & KEY NO.	PARTS NUMBER	FIGURE & KEY NO.
CK-0562-000	37 - T1	HC1-0562-000	19 - 3	HC1-0658-000	24 - 4
CK-8006-000	37 - T2	HC1-0565-000	19 - 4	HC1-0660-000	08 - 5
CK-8007-000	37 - T3	HC1-0572-000	22 - 1	HC1-0670-000	04 - 5
FH2-6488-000	01 - 3	HC1-0572-000	23 - 1	HC1-1627-000	07 - 12
FH2-6488-000	03 - 4	HC1-0579-000	20 - 1	HC1-1628-000	05 - 5
HB1-3257-000	08 - 1	HC1-0580-000	20 - 2	HC1-1629-000	04 - 5
HB1-4072-000	21 - 1	HC1-0581-000	20 - 3	HC1-1630-000	04 - 5
HB1-4357-000	03 - 7	HC1-0582-000	20 - 4	HC1-1633-000	07 - 12
HB1-4394-000	28 - 1	HC1-0583-000	19 - 5	HC1-1641-000	07 - 12
HB1-4978-000	03 - 9	HC1-0584-000	20 - 5	HC1-1642-000	04 - 6
HC1-0480-000	04 - 1	HC1-0585-000	20 - 6	HC1-1642-000	05 - 6
HC1-0480-000	05 - 1	HC1-0586-000	20 - 7	HC1-1649-000	08 - 5
HC1-0481-000	04 - 2	HC1-0590-000	20 - 8	HG1-4439	07 - 3
HC1-0481-000	05 - 2	HC1-0601-000	19 - 6	HG1-4440-000	07 - 3
HC1-0482-000	04 - 3	HC1-0602-000	20 - 9	HG1-4442-000	07 - 4
HC1-0482-000	05 - 3	HC1-0604-000	25 - 1	HG1-4443-000	07 - 4
HC1-0483-000	28 - 2	HC1-0606-000	24 - 6	HG1-4444-000	07 - 3
HC1-0484-000	28 - 3	HC1-0607-000	24 - 1	HG1-4445-100	07 - 2
HC1-0490-000	08 - 2	HC1-0608-000	24 - 2	HG1-4447-000	12 - 1
HC1-0491-000	29 - 1	HC1-0609-000	24 - 3	HG1-4448-000	29 - 2
HC1-0493-000	04 - 1	HC1-0610-000	15 - 1	HG1-4449-030	07 - 2
HC1-0496-000	07 - 12	HC1-0611-000	16 - 1	HG1-4450-000	07 - 2
HC1-0497-000	07 - 12	HC1-0614-000	02 - 1	HG1-4452-000	26 - 3
HC1-0500-000	04 - 4	HC1-0614-000	03 - 1	HG1-4453-000	28 - 6
HC1-0500-000	05 - 4	HC1-0615-000	08 - 3	HG1-4455-000	36 - J5
HC1-0502-000	06 - 1	HC1-0616-000	08 - 4	HG1-4456-000	20 - 22
HC1-0511-000	07 - 1	HC1-0617-000	27 - 1	HG1-4458-000	07 - 15
HC1-0512-000	06 - 2	HC1-0618-000	27 - 2	HG1-4459-000	36 - J4
HC1-0515-000	07 - 17	HC1-0625-000	15 - 2	HG1-4462-000	07 - 14
HC1-0517-000	05 - 5	HC1-0626-000	16 - 2	HG1-4465-000	07 - 4
HC1-0518-000	05 - 5	HC1-0629-000	27 - 3	HG1-4466-000	07 - 3
HC1-0519-000	04 - 5	HC1-0631-000	27 - 4	HG1-4513-000	07 - 13
HC1-0522-000	06 - 3	HC1-0638-000	26 - 1	HG1-4527-000	07 - 4
HC1-0523-000	06 - 4	HC1-0641-000	27 - 5	HG1-4530-000	07 - 2
HC1-0524-000	09 - 1	HC1-0642-000	27 - 6	HG1-4532-000	07 - 4
HC1-0525-000	28 - 4	HC1-0645-000	15 - 3	HG1-4558-000	17 - 1
HC1-0526-000	28 - 5	HC1-0645-000	16 - 3	HG1-4560-000	18 - 1
HC1-0529-000	10 - 1	HC1-0646-000	26 - 2	HG5-3107-000	07 - 13
HC1-0543-000	18 - 5	HC1-0649-000	16 - 4	HH2-1914-000	03 - 6
HC1-0549-000	04 - 6	HC1-0650-000	25 - 2	HH2-2074-000	03 - 6
HC1-0549-000	05 - 6	HC1-0652-000	25 - 3	HH2-2219-000	03 - 6
HC1-0554-000	07 - 12	HC1-0655-000	27 - 7	HH2-2478-000	03 - 6
HC1-0560-000	19 - 1	HC1-0656-000	25 - 4	HH2-2824-000	03 - 6
HC1-0561-000	19 - 2	HC1-0658-000	24 - 4	HH2-3215-000	01 - 3

NUMERICAL INDEX

PC-D320/PC-D340/FAX-L400/imageCLASS D320/D323/D380/D383

PARTS NUMBER	FIGURE & KEY NO.	PARTS NUMBER	FIGURE & KEY NO.	PARTS NUMBER	FIGURE & KEY NO
HH2-3215-000	02 - 4	HM1-0238-000	10 - 3	HT1-6061-000	01 - 2
HH2-3215-000	03 - 4	HM1-0242-000	12 - 2	HT1-6061-000	03 - 3
HH2-3217-000	01 - 3	HM1-0243-000	11 - 1	HT1-6062-000	03 - 3
HH2-3217-000	02 - 4	HM1-0244-000	11 - 2	HT1-6063-000	01 - 2
HH2-3217-000	03 - 4	HM1-0245-000	29 - 3	HT1-6063-000	03 - 3
HH2-3220-000	34 - 11	HM1-0246-000	14 - 2	HT1-6064-000	03 - 3
HH2-3222-000	27 - 8	HM1-0249-000	24 - 6	HU1-0039-000	26 - 5
HH2-3223-000	07 - 16	HM1-0251-000	15 - 4	HU1-0044-000	20 - 12
HH2-3224-000	10 - 2	HM1-0253-000	19 - 8	HU1-0045-000	20 - 13
HH2-3262-000	18 - 2	HM1-0254-000	19 - 9	HU1-0046-000	20 - 14
HH2-3282-000	17 - 2	HM1-0255-000	19 - 10	HU1-0047-000	20 - 15
HH4-3706-000	32 - IC10	HM1-0256-000	19 - 11	HU1-0051-000	19 - 12
HH4-3706-000	33 - IC10	HM1-0258-000	20 - 10	HU1-0052-000	22 - 2
HH4-3710-060	33 - IC1	HM1-0259-000	20 - 11	HU1-1022-000	20 - 16
HH4-3711-060	33 - IC18	HM1-0262-000	13 - 14	HU1-2036-000	27 - 10
HH4-3715-030	32 - IC1	HM1-0263-000	13 - 17	HU1-2037-000	26 - 6
HH4-3720-000	01 - 1	HM1-0265-000	07 - 5	HU1-2039-000	28 - 7
HH4-3720-000	02 - 2	HM1-0268-000	07 - 5	HU1-2040-000	25 - 6
HH4-3720-000	03 - 2	HM1-0269-000	07 - 5	HU1-2041-000	25 - 7
HH4-4008-000	33 - IC34	HM1-0270-000	07 - 5	HU1-2042-000	20 - 17
HH4-4026-000	01 - 1	HM1-0274-000	07 - 5	HU1-2043-000	20 - 18
HH4-4027-000	03 - 2	HM1-0275-000	07 - 5	HU1-2046-000	20 - 19
HH4-4034-000	01 - 1	HM1-0276-000	07 - 5	HU1-2047-000	21 - 3
HH4-4034-000	03 - 2	HM1-0277-000	07 - 5	HU1-2049-000	19 - 13
HH4-4042-000	01 - 1	HM1-0278-000	07 - 5	HU1-2051-000	25 - 8
HH4-4043-000	03 - 2	HM1-0279-000	07 - 5	HU1-3002-000	26 - 7
HH4-4044-000	33 - IC1	HM1-0283-000	07 - 5	HU1-6002-000	25 - 9
HH4-4045-000	33 - IC18	HM1-0284-000	07 - 5	HU1-6004-000	25 - 10
HH7-2528-000	35 - IC5	HM1-0294-000	10 - 7	HY9-0007-000	37 - T4
HH7-2593-000	03 - 8	HT1-2225-000	01 - 2	HY9-0023-000	37 - T5
HH7-2692-000	26 - 4	HT1-2225-000	02 - 3	NPN	01 - 4
HH7-2720-000	35 - T1	HT1-2225-000	03 - 3	NPN	02 - 5
HH7-2721-000	35 - T2	HT1-2226-000	03 - 3	NPN	03 - 5
HH7-2747-000	17 - 3	HT1-2232-000	01 - 2	NPN	04 - 9
HH7-2747-000	18 - 3	HT1-2232-000	03 - 3	NPN	05 - 9
HL1-0060-000	24 - 5	HT1-2233-000	03 - 3	NPN	09 - 5
HL1-0062-000	24 - 5	HT1-3124-000	01 - 2	NPN	09 - 6
HL1-0065-000	19 - 7	HT1-3124-000	02 - 3	RA0-1003-000	13 - 1
HL1-0066-000	21 - 2	HT1-3124-000	03 - 3	RA0-1035-000	12 - 3
HL1-0069-000	25 - 5	HT1-3125-000	03 - 3	RA0-1036-000	12 - 4
HL1-0070-000	27 - 9	HT1-5094-000	01 - 2	RA0-1037-000	13 - 2
HM1-0228-000	14 - 1	HT1-5094-000	02 - 3	RA0-1038-000	12 - 5
HM1-0236-000	06 - 5	HT1-5094-000	03 - 3	RA0-1039-000	12 - 6
HM1-0237-000	10 - 3	HT1-5095-000	03 - 3	RA0-1040-000	12 - 7

NUMERICAL INDEX

PC-D320/PC-D340/FAX-L400/imageCLASS D320/D323/D380/D383

PARTS NUMBER	FIGURE & KEY NO.	PARTS NUMBER	FIGURE & KEY NO.	PARTS NUMBER	FIGURE & KEY NO
RA0-1044-000	12 - 8	RA0-1200-000	12 - 15	WG8-5362-000	26 - 8
RA0-1047-000	12 - 9	RA0-1412-000	30 - 1	WG8-5362-000	28 - 8
RA0-1049-000	12 - 10	RA0-1412-000	31 - 1	WK1-5134-000	32 - BAT1
RA0-1050-000	12 - 11	RB1-7306-000	34 - 4	WK1-5134-000	33 - BAT1
RA0-1051-000	13 - 3	RF0-1002-000	29 - 27	WS1-5397-000	32 - JP1
RA0-1057-000	12 - 12	RF0-1003-000	29 - 28	WS1-5397-000	33 - JP1
RA0-1060-000	13 - 4	RF0-1004-030	29 - 29	WT2-5465-000	03 - 10
RA0-1061-000	13 - 5	RF0-1006-000	13 - 11	WT2-5694-000	07 - 7
RA0-1062-000	13 - 6	RF0-1014-020	13 - 12	WT3-5021-000	01 - 3
RA0-1063-000	13 - 7	RG0-1006-000	13 - 13	WT3-5021-000	03 - 4
RA0-1064-000	13 - 8	RG0-1007-020	12 - 16	WT3-5023-000	01 - 3
RA0-1065-000	13 - 9	RG0-1009-000	29 - 30	WT3-5023-000	03 - 4
RA0-1066-000	13 - 10	RG0-1018-000	13 - 14	XA9-0235-000	34 - 9
RA0-1072-000	12 - 13	RG0-1020-000	10 - 6	XA9-0476-000	15 - 5
RA0-1088-000	29 - 4	RG0-1025-000	11 - 4	XA9-0476-000	19 - 16
RA0-1089-000	29 - 5	RG0-1027-000	29 - 30	XA9-1206-000	12 - 17
RA0-1090-000	29 - 6	RG0-1073-000	34 - 5	XA9-1206-000	13 - 15
RA0-1091-000	29 - 7	RG0-1074-000	10 - 8	XA9-1238-000	07 - 8
RA0-1094-000	29 - 8	RG0-1078-000	34 - 6	XA9-1291-000	10 - 11
RA0-1095-000	29 - 9	RG0-1079-000	34 - 7	XA9-1292-000	29 - 31
RA0-1096-000	29 - 10	RG9-1486-000	10 - 7	XB1-2300-407	07 - 9
RA0-1099-000	29 - 11	RH3-0193-000	34 - L101	XB1-2300-407	07 - 9
RA0-1100-000	29 - 12	RH3-0235-000	34 - L103	XB1-2300-407	08 - 6
RA0-1101-000	29 - 13	RH3-0284-000	34 - T302	XB1-2300-407	09 - 2
RA0-1103-000	29 - 14	RH3-0294-000	34 - T501	XB1-2300-407	10 - 12
RA0-1104-000	29 - 15	RH3-0295-000	34 - T501	XB1-2300-407	22 - 3
RA0-1105-000	29 - 16	RH3-0300-000	34 - T301	XB1-2300-407	23 - 2
RA0-1106-000	29 - 17	RH3-0303-000	34 - T303	XB1-2300-407	26 - 9
RA0-1107-000	29 - 18	RH3-0303-000	34 - T304	XB1-2300-407	27 - 11
RA0-1110-000	29 - 19	RH3-8049-000	34 - VZ102	XB1-2300-407	30 - 2
RA0-1111-000	29 - 20	RH4-0296-000	34 - IC201	XB1-2300-407	31 - 3
RA0-1115-000	29 - 21	RH4-5428-000	34 - IC501	XB1-2300-609	24 - 7
RA0-1116-000	29 - 22	RH4-5429-000	34 - IC501	XB2-7300-607	07 - 10
RA0-1117-000	29 - 23	RH4-5448-000	34 - IC301	XB2-7300-607	09 - 3
RA0-1118-000	29 - 24	RH5-0124-000	34 - X201	XB2-7300-607	10 - 13
RA0-1121-000	29 - 25	RH6-3858-000	34 - R325	XB2-7300-607	31 - 4
RA0-1123-000	34 - 1	RH7-1473-020	31 - 2	XB2-7400-606	34 - 10
RA0-1125-000	34 - 2	RH7-1477-000	10 - 9	XB4-7300-807	12 - 18
RA0-1126-000	34 - 3	RH7-5315-000	10 - 10	XB4-7300-807	17 - 4
RA0-1128-000	07 - 6	RH7-6058-000	34 - SW301	XB4-7300-807	18 - 4
RA0-1158-000	12 - 14	RH7-8100-000	34 - 8	XB4-7300-807	19 - 15
RA0-1169-000	10 - 4	RL1-0303-000	11 - 3	XB4-7300-807	25 - 11
RA0-1176-000	10 - 5	WG8-5362-000	19 - 14	XB4-7300-807	29 - 32
RA0-1189-000	29 - 26	WG8-5362-000	20 - 20	XB4-7401-005	04 - 7

NUMERICAL INDEX

PC-D320/PC-D340/FAX-L400/imageCLASS D320/D323/D380/D383

PARTS NUMBER	FIGURE & KEY NO.	PARTS NUMBER	FIGURE & KEY NO.	PARTS NUMBER	FIGURE & KEY NO
XB4-7401-005	05 - 7				
XB4-7401-005	10 - 14				
XB4-7401-005	11 - 5				
XB4-7401-005	12 - 19				
XB4-7401-005	13 - 16				
XB4-7401-005	29 - 33				
XB6-7300-409	26 - 10				
XB6-7300-607	04 - 8				
XB6-7300-607	05 - 8				
XB6-7300-607	06 - 6				
XB6-7300-607	07 - 11				
XB6-7300-607	07 - 11				
XB6-7300-607	08 - 7				
XB6-7300-607	09 - 4				
XB6-7300-607	10 - 15				
XB6-7300-607	11 - 6				
XB6-7300-607	29 - 34				
XB6-7300-607	31 - 5				
XD9-0219-000	20 - 21				

P C - D 3 2 0 / P C - D 3 4 0 / F A X - L 4 0 0 / imageCLASS D320/D323/D380/D383

230V	H12-2553-000
230V	H12-2556-000
230V	H12-2558-000
230V	H12-2563-000
230V	H12-2573-000
230V	H12-2575-000
230V	H12-2576-000
230V	H12-2577-000
230V	H12-2578-000
110V	H12-2906-000
230V	H12-2909-000
110V	H12-2916-000
230V	H12-2919-000

Contents

01	PC-D320, imageCLASS D320/D323 PACKAGE CONTENTS	2-1
02	PC-D340 PACKAGE CONTENTS	2-3
03	FAX-L400, imageCLASS D380/D383 PACKAGE CONTENTS	2-5
04	PC-D340, FAX-L400, imageCLASS D380/D383 FRONT COVER, LEFT COVER, COPY BOARD COVER	2-7
05	PC-D320, imageCLASS D320/D323 FRONT COVER, LEFT COVER, COPY BOARD COVER	2-9
06	RIGHT COVER, CARTRIDGE COVER	2-11
07	OPERATION PANEL ASS'Y, SCNT BOARD, ECNT BOARD	2-13
08	DOCUMENT FEED ASS'Y, FLAT BED ASS'Y	2-16
09	CHASSIS UNIT, EJECT PAPER FRAME ASS'Y	2-18
10	LASER/SCANNER ASS'Y, FIXING ASS'Y	2-20
11	PAPER PICK-UP ASS'Y	2-22
12	PAPER FEED SECTION 1	2-24
13	PAPER FEED SECTION 2	2-26
14	PAPER TRAY ASS'Y	2-28
15	PC-D340/FAX-L400, imageCLASS D380/D383 COPY BOARD COVER ASS'Y	2-30
16	PC-D320, imageCLASS D320/D323 COPY BOARD COVER ASS'Y	2-32
17	PC-D320, imageCLASS D320/D323, PC-D340 OPERATION PANEL ASS'Y	2-34
18	FAX-L400, imageCLASS D380/D383 OPERATION PANEL ASS'Y	2-36
19	PC-D340, FAX-L400, imageCLASS D380/D383 DOCUMENT FEED ASS'Y	2-38
20	PC-D340, FAX-L400, imageCLASS D380/D383 MIDDLE DOCUMENT FEED ASS'Y 2-40	
21	PC-D340, FAX-L400, imageCLASS D380/D383 LOWER DOCUMENT FEED ASS'Y 2-42	
22	PC-D340, FAX-L400, imageCLASS D380/D383 DOCUMENT FEED MOTOR ASS'Y 2-44	
23	PC-D340, FAX-L400, imageCLASS D380/D383 DOCUMENT FEED GEAR ASS'Y	2-46
24	DOCUMENT READ SECTION	2-48
25	PC-D340, FAX-L400, imageCLASS D380/D383 ADF BASE ASS'Y	2-50
26	FLAT BED ASS'Y	2-52
27	CONTACT SENSOR	2-54
28	EJECT PAPER FRAME ASS'Y	2-56
29	FIXING ASS'Y	2-58
30	FRONT PLATE ASS'Y	2-61
31	REAR PLATE ASS'Y	2-63
32	PC-D320, imageCLASS D320/D323, PC-D340 SCNT BOARD ASS'Y	2-65
33	FAX-L400, imageCLASS D380/D383 SCNT BOARD ASS'Y	2-67
34	ECNT BOARD ASS'Y	2-69
35	FAX-L400, imageCLASS D380/D383 NCU BOARD ASS'Y	2-71
36	MODULAR/USB BOARD ASS'Y	2-73
37	TOOLS	2-75

FIGURE 01
PC-D320, imageCLASS D320/D323 PACKAGE CONTENTS

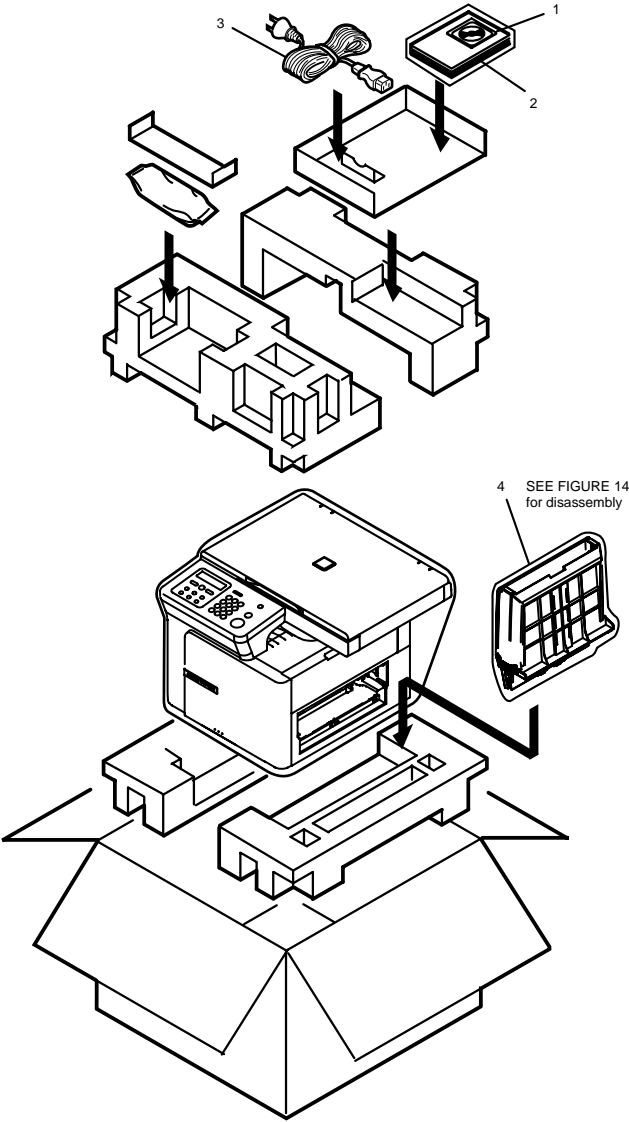


FIGURE & KEY NO.	PARTS NUMBER	R A N K	Q'TY	DESCRIPTION	SERIAL NUMBER/ REMARKS	S V C
1	HH4-3720-000	N	1	CD-ROM, PRINTER DRIVER	GB DE FR CH AT ZA	
1	HH4-4034-000	N	1	CD-ROM, PRINTER DRIVER	AU ASIA	
1	HH4-4026-000	N	1	CD-ROM, PRINTER DRIVER	CN	
1	HH4-4042-000	N	1	CD-ROM, PRINTER DRIVER	TW	
2	HT1-2225-000	N	1	REFERENCE GUIDE (ENGLISH)	GB ZA	
2	HT1-3124-000	N	1	REFERENCE GUIDE(MODELE FRANCE)	FR	
2	HT1-5094-000	N	1	REFERENCE GUIDE (DEUTSCH)	DE CH AT	
2	HT1-2232-000		1	USER'S GUIDE (ENGLISH)	AU ASIA	
2	HT1-6061-000		1	USER'S GUIDE (CHINESE)	CN	
2	HT1-6063-000		1	USER'S GUIDE (TAIWAN)	TW	
3	HH2-3215-000		1	CORD, POWER SUPPLY	EUR DE FR CH AT ZA ASIA KR	
3	HH2-3217-000		1	CORD, POWER SUPPLY	GB	
3	WT3-5021-000		1	CORD, POWER SUPPLY	TW	
3	WT3-5023-000		1	CORD, POWER SUPPLY	AU	
3	FH2-6488-000		1	POWER CORD,220V	CN	
4	NPN		1	PAPER TRAY ASS'Y		

FIGURE 02
PC-D340 PACKAGE CONTENTS

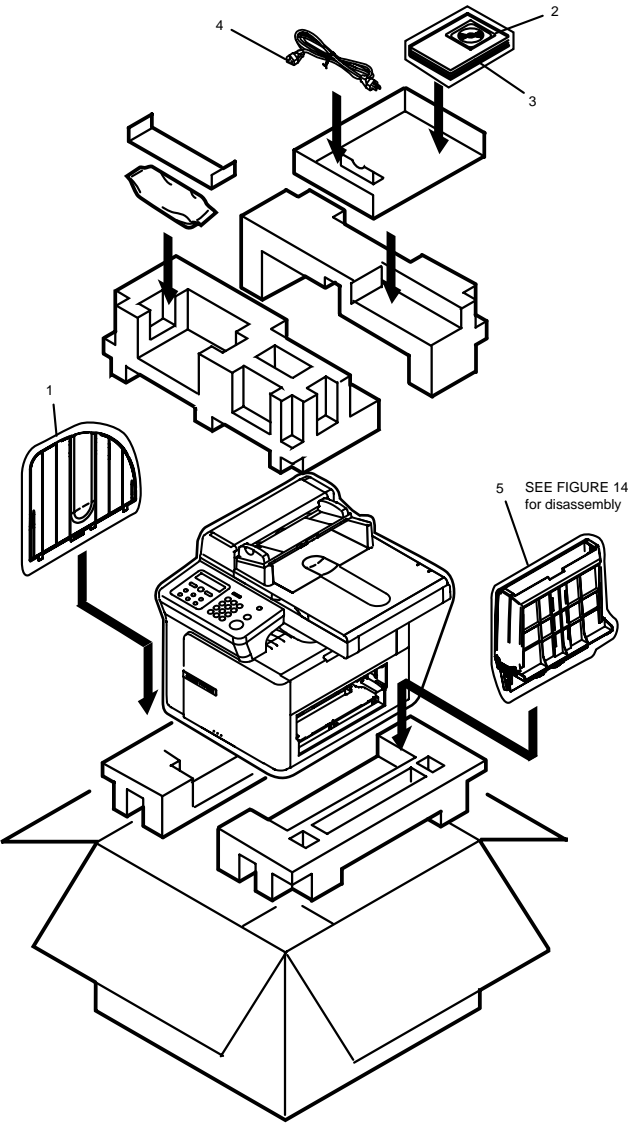


FIGURE & KEY NO.	PARTS NUMBER	R A N K	Q'TY	DESCRIPTION	SERIAL NUMBER/ REMARKS	S V C
1	HC1-0614-000		1	TRAY, DOCUMENT		
2	HH4-3720-000	N	1	CD-ROM, PRINTER DRIVER	GB DE FR CH AT ZA	
3	HT1-2225-000	N	1	REFERENCE GUIDE (ENGLISH)	GB ZA	
3	HT1-3124-000	N	1	REFERENCE GUIDE(MODELE FRANCE)	FR	
3	HT1-5094-000	N	1	REFERENCE GUIDE (DEUTSCH)	DE CH AT	
4	HH2-3215-000		1	CORD, POWER SUPPLY	EUR DE FR CH AT ZA	
4	HH2-3217-000		1	CORD, POWER SUPPLY	GB	
5	NPN		1	PAPER TRAY ASS'Y		

FIGURE 03
FAX-L400, imageCLASS D380/D383 PACKAGE
CONTENTS

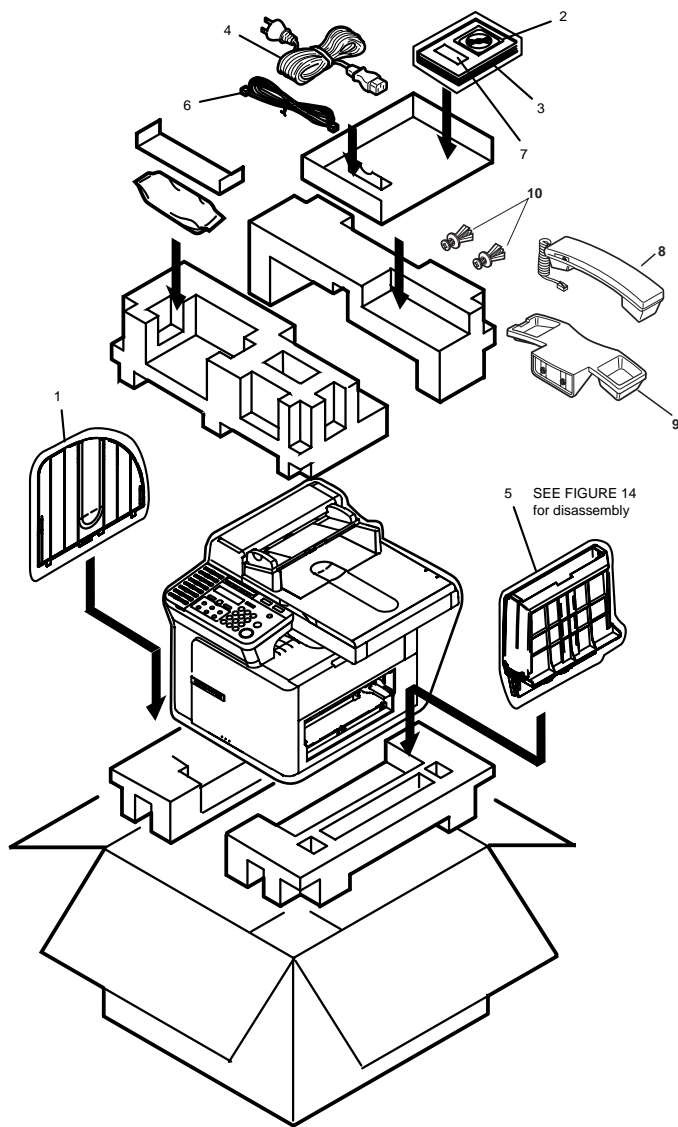


FIGURE & KEY NO.	PARTS NUMBER	R A N K	Q'TY	DESCRIPTION	SERIAL NUMBER/ REMARKS	S V C
1	HC1-0614-000		1	TRAY, DOCUMENT		
2	HH4-3720-000	N	1	CD-ROM, PRINTER DRIVER	GB DE FR	
2	HH4-4034-000	N	1	CD-ROM, PRINTER DRIVER	AU ASIA	
2	HH4-4043-000	N	1	CD-ROM, PRINTER DRIVER	TW	
2	HH4-4027-000	N	1	CD-ROM, PRINTER DRIVER	CN	
3	HT1-2225-000	N	1	REFERENCE GUIDE (ENGLISH)	GB	
3	HT1-2226-000	N	1	FACSIMILE GUIDE (ENGLISH)	GB	
3	HT1-3124-000	N	1	REFERENCE GUIDE(MODELE FRANCE)	FR	
3	HT1-3125-000	N	1	FACSIMILE GUIDE(MODELE FRANCE)	FR	
3	HT1-5094-000	N	1	REFERENCE GUIDE (DEUTSCH)	DE	
3	HT1-5095-000	N	1	FACSIMILE GUIDE (DEUTSCH)	DE	
3	HT1-2232-000		1	USER'S GUIDE (ENGLISH)	AU ASIA	
3	HT1-2233-000	N	1	FACSIMILE GUIDE (ENGLISH)	AU ASIA	
3	HT1-6061-000		1	USER'S GUIDE (CHINESE)	CN	
3	HT1-6062-000		1	FACSIMILE GUIDE (CHINESE)	CN	
3	HT1-6063-000		1	USER'S GUIDE (TAIWAN)	TW	
3	HT1-6064-000		1	FACSIMILE GUIDE (TAIWAN)	TW	
4	HH2-3215-000		1	CORD, POWER SUPPLY	EUR DE FR ASIA KR	
4	HH2-3217-000		1	CORD, POWER SUPPLY	GB	
4	WT3-5021-000		1	CORD, POWER SUPPLY	TW	
4	WT3-5023-000		1	CORD, POWER SUPPLY	AU	
4	FH2-6488-000		1	POWER CORD,220V	CN	
5	NPN		1	PAPER TRAY ASS'Y		
6	HH2-1914-000		1	MODULAR CORD, 6P	GB	
6	HH2-2074-000		1	MODULAR CORD (GERM)	DE	
6	HH2-2219-000		1	MODULAR CORD	FR	
6	HH2-2478-000		1	MODULAR CORD	AU	
6	HH2-2824-000		1	MODULAR CORD, 2P	ASIA CN TW	
7	HB1-4357-000		1	LABEL, DESTINATION		
8	HH7-2593-000		1	HANDSET UNIT	CN	
9	HB1-4978-000		1	HOLDER, HANDSET CRADLE	CN	
10	WT2-5465-000		2	RIVET	CN	

FIGURE 04
PC-D340, FAX-L400, imageCLASS D380/D383 FRONT
COVER, LEFT COVER, COPY BOARD COVER

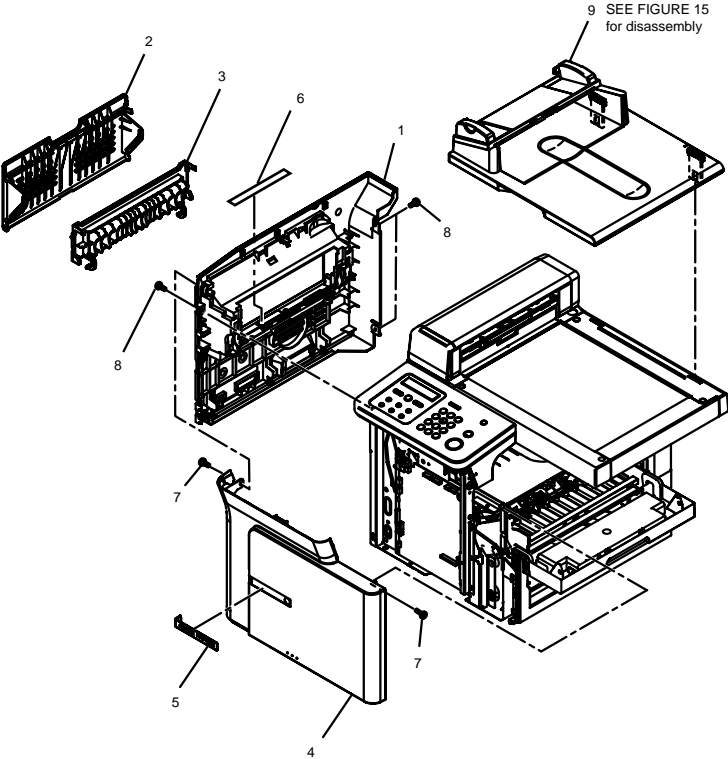


FIGURE & KEY NO.	PARTS NUMBER	R A N K	Q'TY	DESCRIPTION	SERIAL NUMBER/ REMARKS	S V C
1	HC1-0480-000		1	COVER, LEFT	PC-D340	
1	HC1-0493-000		1	COVER, LEFT	FAX-L400, imageCLASS D380/D383	
2	HC1-0481-000		1	COVER, FACE-UP		
3	HC1-0482-000		1	GUIDE, FACE-UP		
4	HC1-0500-000		1	COVER, FRONT		
5	HC1-0519-000		1	PLATE, LOGO	PC-D340	
5	HC1-0670-000		1	PLATE, LOGO	FAX-L400	
5	HC1-1629-000		1	PLATE, LOGO	imageCLASS D380	
5	HC1-1630-000		1	PLATE, LOGO	imageCLASS D383	
6	HC1-0549-000		1	LABEL, CAUTION	EXCEPT KR	
6	HC1-1642-000		1	LABEL, CAUTION	KR	
7	XB4-7401-005		2	SCREW,TAPPING,TRUSS HEAD,M4X10		
8	XB6-7300-607		3	SCREW, TP, M3X6		
9	NPN		1	COPY BOARD COVER ASS'Y		

FIGURE 05

PC-D320, imageCLASS D320/D323 FRONT COVER, LEFT
COVER, COPY BOARD COVER

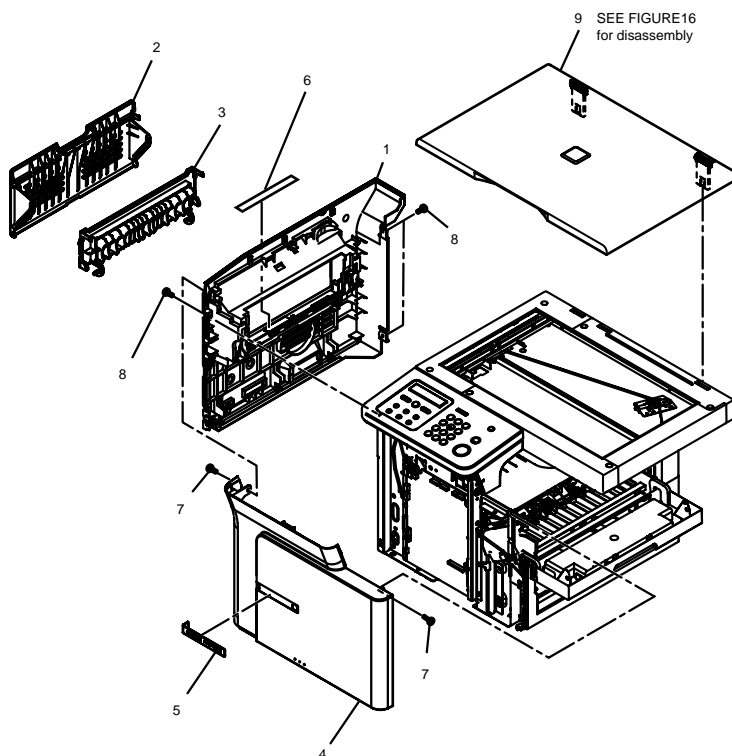


FIGURE & KEY NO.	PARTS NUMBER	R A N K	Q'TY	DESCRIPTION	SERIAL NUMBER/ REMARKS	S V C
1	HC1-0480-000		1	COVER, LEFT		
2	HC1-0481-000		1	COVER, FACE-UP		
3	HC1-0482-000		1	GUIDE, FACE-UP		
4	HC1-0500-000		1	COVER, FRONT		
5	HC1-0518-000		1	PLATE, LOGO	PC-D320	
5	HC1-0517-000		1	PLATE, LOGO	imageCLASS D320	
5	HC1-1628-000		1	PLATE, LOGO	imageCLASS D323	
6	HC1-0549-000		1	LABEL, CAUTION	EXCEPT KR	
6	HC1-1642-000		1	LABEL, CAUTION	KR	
7	XB4-7401-005		2	SCREW,TAPPING,TRUSS HEAD,M4X10		
8	XB6-7300-607		3	SCREW, TP, M3X6		
9	NPN		1	COPY BOARD COVER ASS'Y		

FIGURE 06
RIGHT COVER, CARTRIDGE COVER

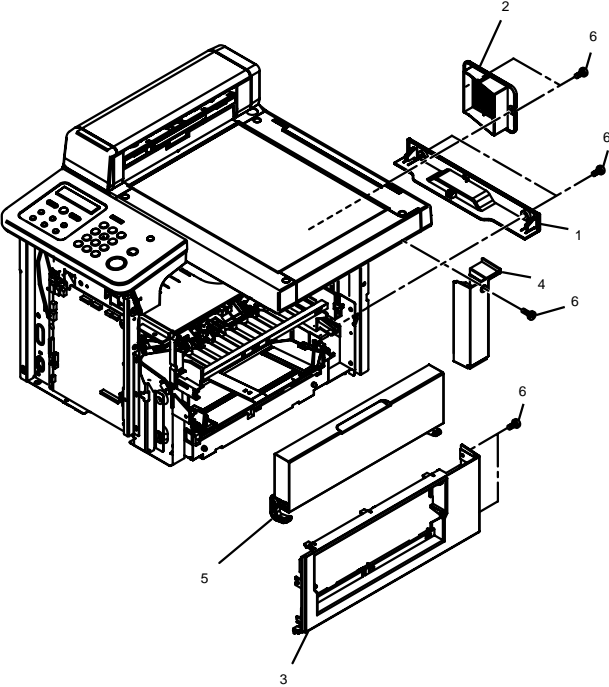


FIGURE & KEY NO.	PARTS NUMBER	R A N K	Q'TY	DESCRIPTION	SERIAL NUMBER/ REMARKS	S V C
1	HC1-0502-000		1	COVER, REAR, BOTTOM		
2	HC1-0512-000		1	COVER, FAN		
3	HC1-0522-000		1	COVER, RIGHT		
4	HC1-0523-000		1	COVER, REAR, RIGHT		
5	HM1-0236-000		1	CARTRIDGE COVER UNIT		
6	XB6-7300-607		7	SCREW, TP, M3X6		

FIGURE 07
OPERATION PANEL ASS'Y, SCNT BOARD, ECNT
BOARD

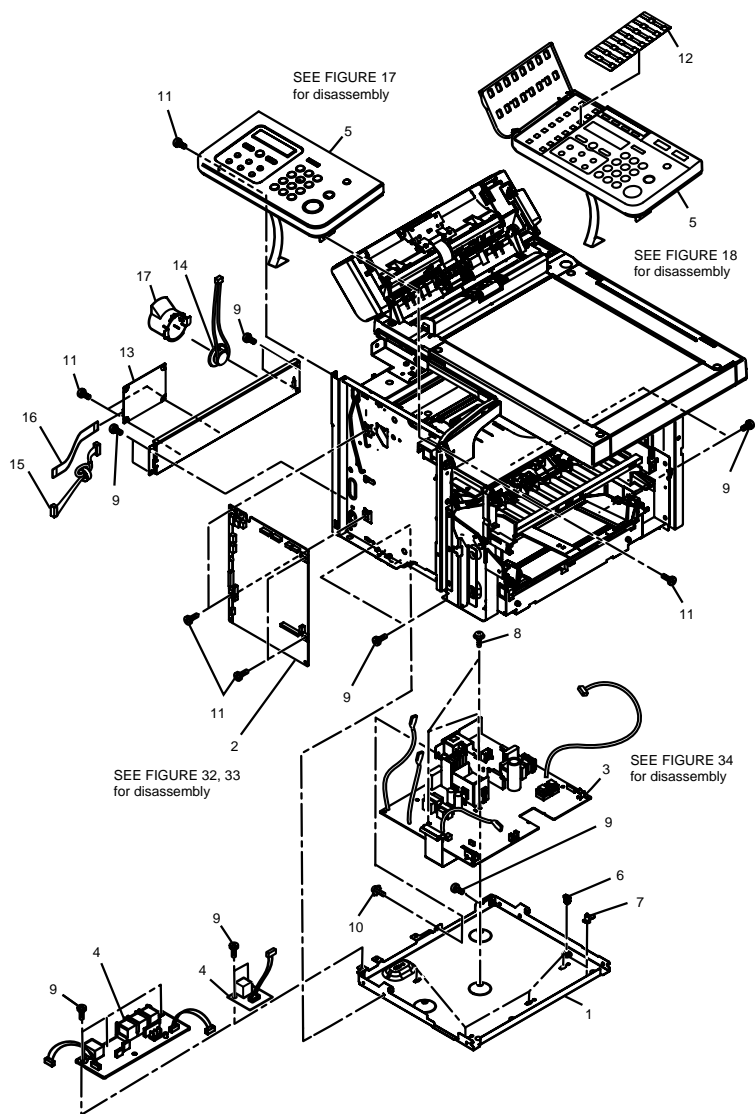


FIGURE & KEY NO.	PARTS NUMBER	R A N K	Q'TY	DESCRIPTION	SERIAL NUMBER/ REMARKS	S V C
1	HC1-0511-000		1	CASE, ECNT BOARD		
2	HG1-4445-100		1	SCNT BOARD ASS'Y	FAX-L400, imageCLASS D380 (AU ASIA KR)	
2	HG1-4449-030		1	SCNT BOARD ASS'Y	PC-D320, imageCLASS D320/D323	
2	HG1-4450-000		1	SCNT BOARD ASS'Y	PC-D340	
2	HG1-4530-000		1	SCNT BOARD ASS'Y	imageCLASS D380 (TW)/D383 (CN)	
3	HG1-4440-000		1	ECNT BOARD ASS'Y	FAX-L400	
3	HG1-4444-000		1	ECNT BOARD ASS'Y	PC-D320/PC-D340	
3	HG1-4466-000		1	ECNT BOARD ASS'Y	imageCLASS D380 (AU ASIA KR)/D383 (CN)	
3	HG1-4439		1	ECNT BOARD ASS'Y	imageCLASS D380 (TW)	
4	HG1-4442-000		1	USB BOARD ASS'Y	PC-D320/PC-D340	
4	HG1-4443-000		1	USB-MJB BOARD ASS'Y	FAX-L400	
4	HG1-4465-000		1	USB-MJB BOARD ASS'Y	imageCLASS D380 (AU ASIA)/D383 (CN)	
4	HG1-4527-000		1	USB-MJB BOARD ASS'Y	imageCLASS D380 (TW)	
4	HG1-4532-000		1	USB-MJB BOARD ASS'Y	imageCLASS D380 (KR)	
5	HM1-0265-000		1	OPERATION PANEL ASS'Y	FAX-L400 EUR GB	
5	HM1-0268-000		1	OPERATION PANEL ASS'Y	PC-D320/PC-D340	
5	HM1-0269-000		1	OPERATION PANEL ASS'Y	FAX-L400 DE	
5	HM1-0270-000		1	OPERATION PANEL ASS'Y	FAX-L400 FR	
5	HM1-0274-000		1	OPERATION PANEL ASS'Y	imageCLASS D320 (AU ASIA)	
5	HM1-0275-000		1	OPERATION PANEL ASS'Y	imageCLASS D323 (CN)	
5	HM1-0276-000		1	OPERATION PANEL ASS'Y	imageCLASS D320 (KR)	
5	HM1-0283-000		1	OPERATION PANEL ASS'Y	imageCLASS D320 (TW)	
5	HM1-0277-000		1	OPERATION PANEL ASS'Y	imageCLASS D380 (AU ASIA)	
5	HM1-0278-000		1	OPERATION PANEL ASS'Y	imageCLASS D383 (CN)	
5	HM1-0279-000		1	OPERATION PANEL ASS'Y	imageCLASS D380 (KR)	
5	HM1-0284-000		1	OPERATION PANEL ASS'Y	imageCLASS D380 (TW)	
6	RA0-1128-000		5	SPACER, PCB		
7	WT2-5694-000		1	CLAMP, CABLE		
8	XA9-1238-000		3	SCREW W/WASHER, M3X8		

FIGURE & KEY NO.	PARTS NUMBER	R A N K	Q'TY	DESCRIPTION	SERIAL NUMBER/ REMARKS	S V C
9	XB1-2300-407		11	SCREW, BH3X4 (S)	PC-D320/D340, imageCLASS D320/D323	
9	XB1-2300-407		12	SCREW, BH3X4 (S)	FAX-L400, imageCLASS D380/D383	
10	XB2-7300-607		1	SCREW, M3X6		
11	XB6-7300-607		6	SCREW, TP, M3X6	PC-D320/D340, imageCLASS D320/D323	
11	XB6-7300-607		8	SCREW, TP, M3X6	FAX-L400, imageCLASS D380/D383	
12	HC1-0496-000		1	SHEET, ONE-TOUCH DIAL	FAX-L400 DE	
12	HC1-0497-000		1	SHEET, ONE-TOUCH DIAL	FAX-L400 FR	
12	HC1-0554-000		1	SHEET, ONE-TOUCH DIAL	FAX-L400 (EUR GB), imageCLASS D380 (AU ASIA)	
12	HC1-1627-000		1	SHEET, ONE-TOUCH DIAL	imageCLASS D383 (CN)	
12	HC1-1641-000		1	SHEET, ONE-TOUCH DIAL	imageCLASS D380 (TW)	
12	HC1-1633-000		1	SHEET, ONE-TOUCH DIAL	imageCLASS D380 (KR)	
13	HG5-3107-000		1	NCU BOARD ASSEMBLY	FAX-L400	
13	HG1-4513-000		1	NCU BOARD ASS'Y	imageCLASS D380/D383	
14	HG1-4462-000		1	SPEAKER UNIT	FAX-L400, imageCLASS D380/D383	
15	HG1-4458-000		1	CABLE WITH CONNECTOR, 6P	FAX-L400, imageCLASS D380/D383	
16	HH2-3223-000		1	CABLE, FLAT, 25P	FAX-L400, imageCLASS D380/D383	
17	HC1-0515-000		1	HOLDER, SPEAKER	FAX-L400, imageCLASS D380/D383	

FIGURE 08
DOCUMENT FEED ASS'Y, FLAT BED ASS'Y

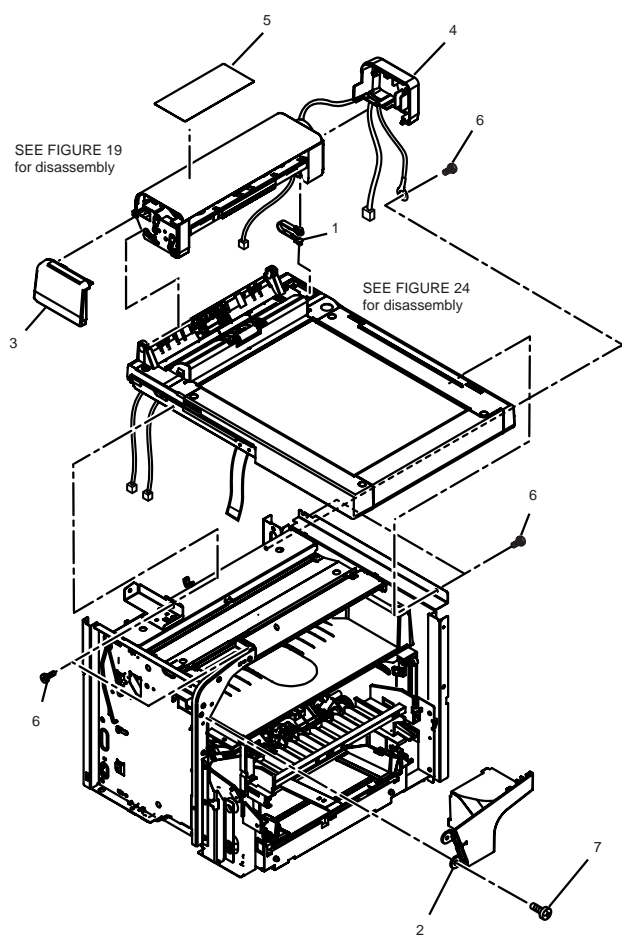


FIGURE & KEY NO.	PARTS NUMBER	R A N K	Q'TY	DESCRIPTION	SERIAL NUMBER/ REMARKS	S V C
1	HB1-3257-000		1	STOPPER, OPERATION PANEL	PC-D340, FAX-L400, imageCLASS D380/D383	
2	HC1-0490-000		1	COVER, OPERATION PANEL, UNDER		
3	HC1-0615-000		1	COVER, DOCUMENT FEED, FRONT	PC-D340, FAX-L400, imageCLASS D380/D383	
4	HC1-0616-000		1	COVER, DOCUMENT FEED, REAR	PC-D340, FAX-L400, imageCLASS D380/D383	
5	HC1-0660-000		1	LABEL, GLASS CLEANING	PC-D340, FAX-L400, imageCLASS D380	
5	HC1-1649-000		1	LABEL, GLASS CLEANING	imageCLASS D380 (TW KR)/D383 (CN)	
6	XB1-2300-407		5	SCREW, BH3X4 (S)		
7	XB6-7300-607		1	SCREW, TP, M3X6		

FIGURE 09
CHASSIS UNIT, EJECT PAPER FRAME ASS'Y

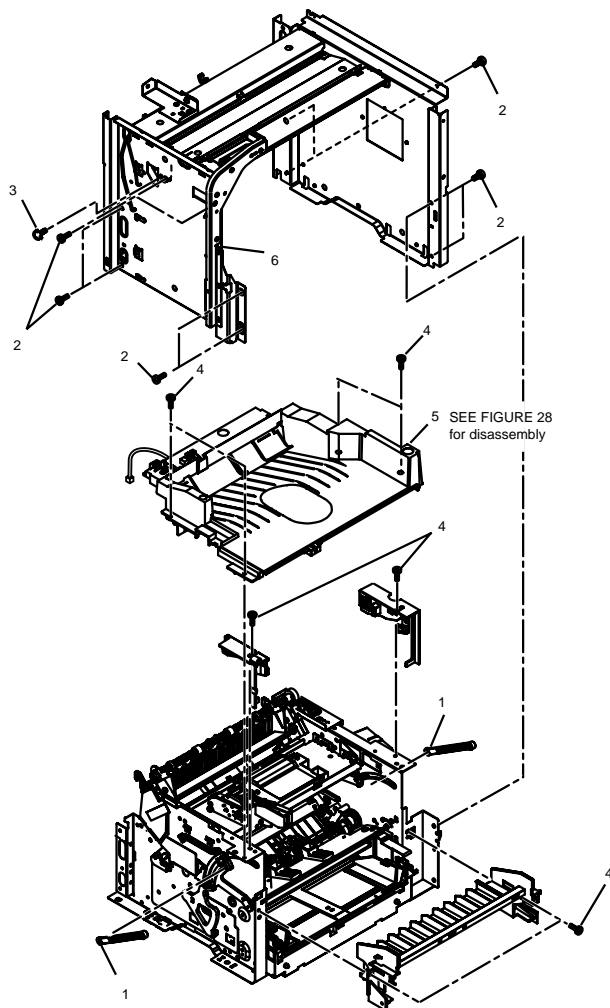


FIGURE & KEY NO.	PARTS NUMBER	R A N K	Q'TY	DESCRIPTION	SERIAL NUMBER/ REMARKS	S V C
1	HC1-0524-000		2	LINK, CONNECTING		
2	XB1-2300-407		10	SCREW, BH3X4 (S)		
3	XB2-7300-607		1	SCREW, M3X6		
4	XB6-7300-607		8	SCREW, TP, M3X6		
5	NPN		1	EJECT PAPER FRAME ASS'Y		
6	NPN		1	CHASSIS UNIT		

FIGURE 10
LASER/SCANNER ASS'Y, FIXING ASS'Y

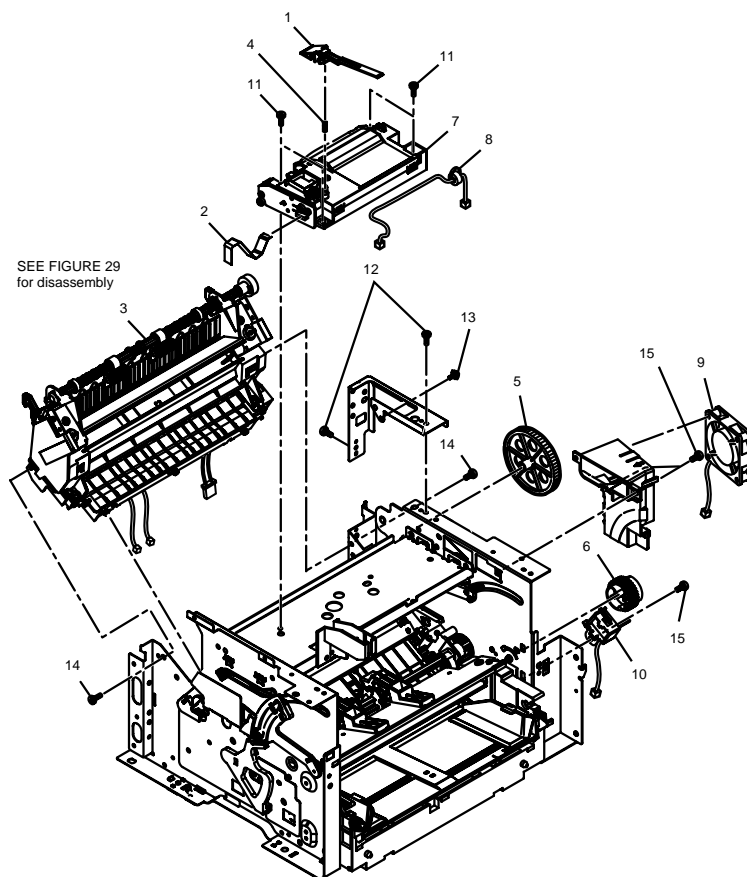


FIGURE & KEY NO.	PARTS NUMBER	R A N K	Q'TY	DESCRIPTION	SERIAL NUMBER/ REMARKS	S V C
1	HC1-0529-000		1	LEVER, LASER SHUTTER	EXCEPT TW TW EUR DE FR CH AT ZA ASIA AU CN KR TW	
2	HH2-3224-000		1	CABLE, FLAT, 10P		
3	HM1-0238-000		1	FIXING ASS'Y		
3	HM1-0237-000		1	FIXING ASS'Y		
4	RA0-1169-000		1	SPRING, COMPRESSION		
5	RA0-1176-000		1	GEAR, 69T		
6	RG0-1020-000		1	PICK-UP GEAR ASS'Y		
7	RG9-1486-000		1	SCANNER ASS'Y		
7	HM1-0294-000		1	SCANNER ASS'Y		
8	RG0-1074-000		1	CABLE, SCANNER MOTOR		
9	RH7-1477-000		1	FAN		
10	RH7-5315-000		1	SOLENOID, 24V		
11	XA9-1291-000		4	SCREW, RS, M3X8		
12	XB1-2300-407		2	SCREW, BH3X4 (S)		
13	XB2-7300-607		1	SCREW, M3X6		
14	XB4-7401-005		2	SCREW,TAPPING,TRUSS HEAD,M4X10		
15	XB6-7300-607		3	SCREW, TP, M3X6		

FIGURE 11
PAPER PICK-UP ASS'Y

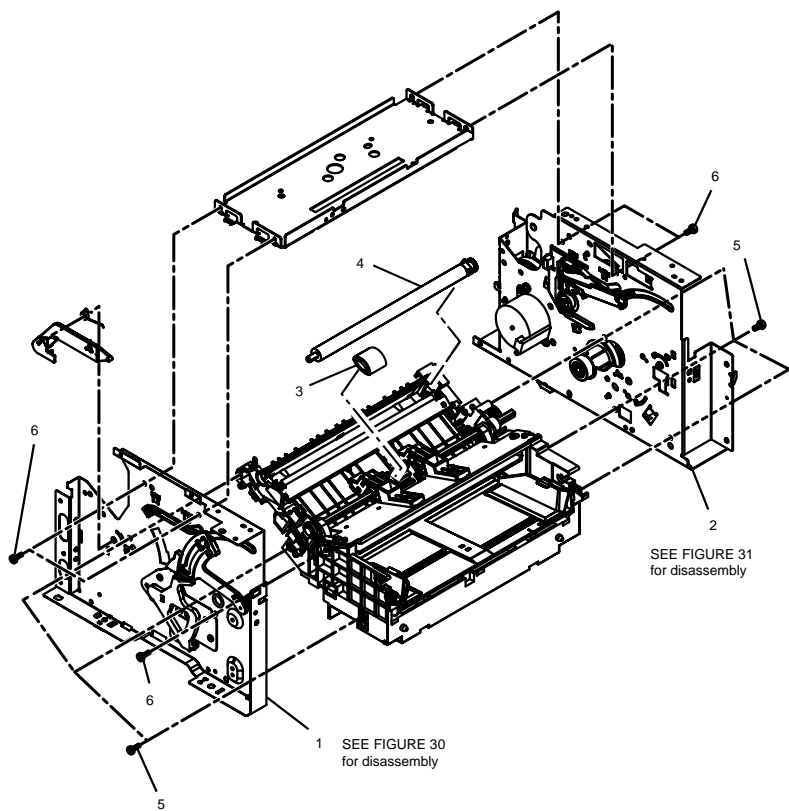


FIGURE & KEY NO.	PARTS NUMBER	R A N K	Q'TY	DESCRIPTION	SERIAL NUMBER/ REMARKS	S V C
1	HM1-0243-000	N	1	FRONT PLATE ASS'Y		
2	HM1-0244-000	N	1	REAR PLATE ASS'Y		
3	RL1-0303-000		1	ROLLER, PICK-UP		
4	RG0-1025-000		1	TRANSFER ROLLER ASS'Y		
5	XB4-7401-005		6	SCREW,TAPPING,TRUSS HEAD,M4X10		
6	XB6-7300-607		5	SCREW, TP, M3X6		

FIGURE 12
PAPER FEED SECTION 1

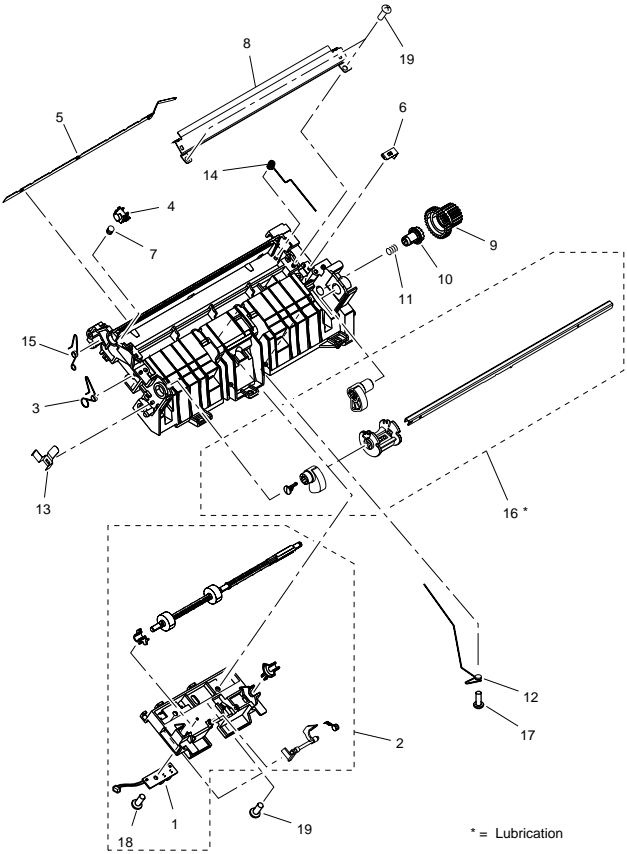


FIGURE & KEY NO.	PARTS NUMBER	R A N K	Q'TY	DESCRIPTION	SERIAL NUMBER/ REMARKS	S V C
1	HG1-4447-000		1	PAPER SENSOR BOARD ASS'Y		
2	HM1-0242-000		1	FEED ROLLER HOLDER ASS'Y		
3	RA0-1035-000		1	SPRING, TORSION		
4	RA0-1036-000		1	BUSHING		
5	RA0-1038-000		1	ELIMINATOR, STATIC CHARGE		
6	RA0-1039-000		1	PLATE, GROUNDING		
7	RA0-1040-000		1	SPRING, COMPRESSION		
8	RA0-1044-000		1	GUIDE, TRANSFER		
9	RA0-1047-000		1	GEAR, 31T/19T		
10	RA0-1049-000		1	RATCHET		
11	RA0-1050-000		1	SPRING, COMPRESSION		
12	RA0-1057-000		1	SPRING, TORSION		
13	RA0-1072-000		1	PLATE, GROUNDING		
14	RA0-1158-000		1	SPRING, COMPRESSION		
15	RA0-1200-000		1	SPRING, TORSION		
16	RG0-1007-020		1	PAPER PICK-UP SHAFT ASS'Y		
17	XA9-1206-000		1	SCREW, WWASHER, M4X12		
18	XB4-7300-807		1	SCREW, TAP TIGHT, BINDING HEAD		
19	XB4-7401-005		4	SCREW,TAPPING,TRUSS HEAD,M4X10		

FIGURE 13
PAPER FEED SECTION 2

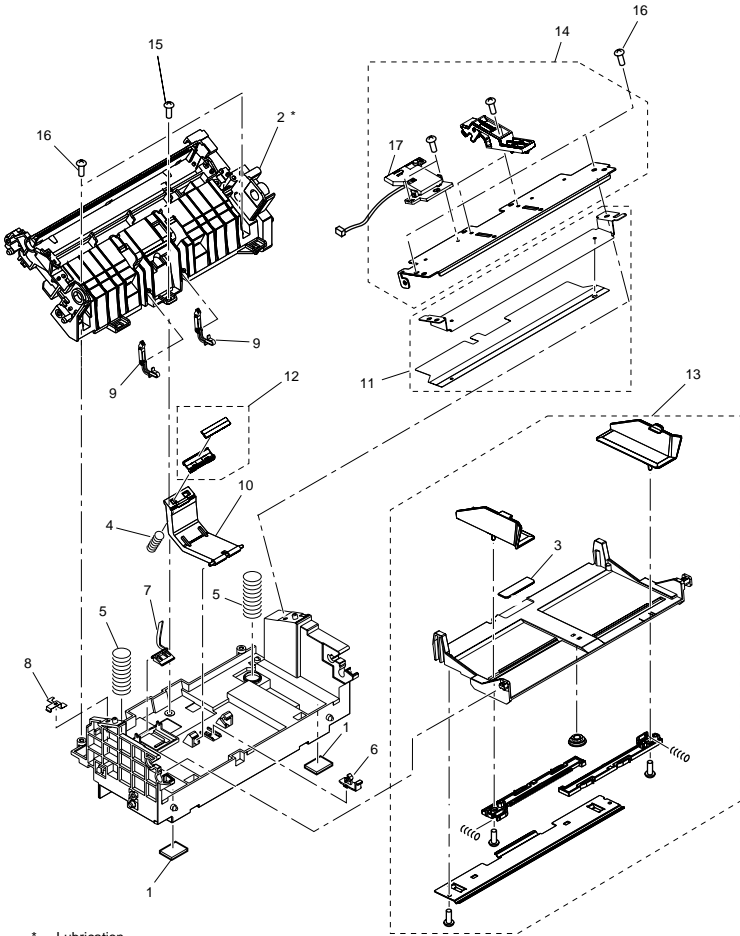


FIGURE & KEY NO.	PARTS NUMBER	R A N K	Q'TY	DESCRIPTION	SERIAL NUMBER/ REMARKS	S V C
1	RA0-1003-000		2	FOOT, RUBBER		
2	RA0-1037-000		1	FRAME		
3	RA0-1051-000		1	SHEET, SEPARATION		
4	RA0-1060-000		1	SPRING, COMPRESSION		
5	RA0-1061-000		2	SPRING, COMPRESSION		
6	RA0-1062-000		1	HOOK, PAD		
7	RA0-1063-000		1	LEVER, PAPER SENSOR		
8	RA0-1064-000		1	PLATE, GROUNDING		
9	RA0-1065-000		2	ARM		
10	RA0-1066-000		1	HOLDER, PAD		
11	RF0-1006-000		1	PLATE, MANUAL PAPER FEED GUIDE		
12	RF0-1014-020		1	PAD, SEPARATION		
13	RG0-1006-000		1	PAPER LIFTING PLATE ASS'Y		
14	HM1-0262-000		1	FRONT STAY ASS'Y	FAX-L400, imageCLASS D380/D383	
14	RG0-1018-000		1	FRONT STAY ASS'Y	PC-D320/D340, imageCLASS D320/D323	
15	XA9-1206-000		1	SCREW, WWASHER, M4X12		
16	XB4-7401-005		4	SCREW,TAPPING,TRUSS HEAD,M4X10		
17	HM1-0263-000		1	TONER SENSOR UNIT	FAX-L400, imageCLASS D380/D383	

FIGURE 14
PAPER TRAY ASS'Y

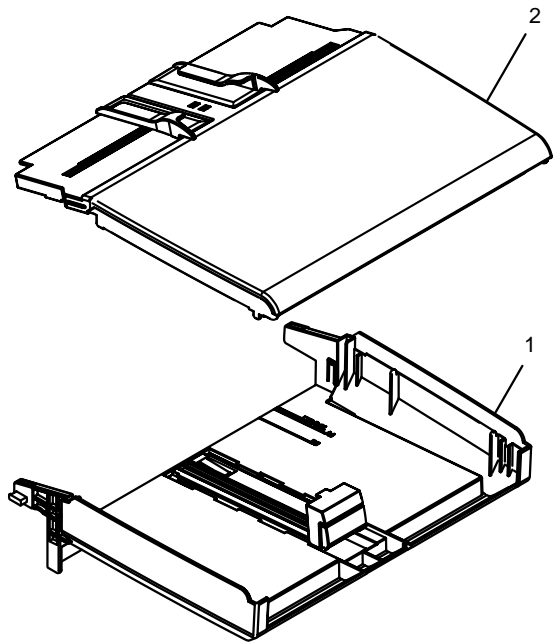


FIGURE & KEY NO.	PARTS NUMBER	R A N K	Q'TY	DESCRIPTION	SERIAL NUMBER/ REMARKS	S V C
1	HM1-0228-000		1	PAPER PICK-UP TRAY ASS'Y		
2	HM1-0246-000		1	PAPER PICK-UP COVER ASS'Y		



FIGURE 15
PC-D340/FAX-L400, imageCLASS D380/D383 COPY
BOARD COVER ASS'Y

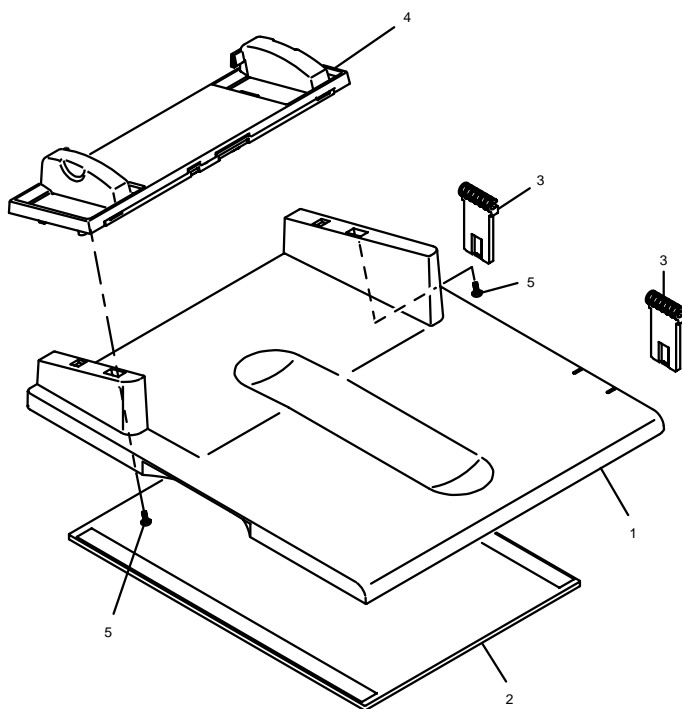


FIGURE & KEY NO.	PARTS NUMBER	R A N K	Q'TY	DESCRIPTION	SERIAL NUMBER/ REMARKS	S V C
1	HC1-0610-000		1	COVER, COPY BOARD		
2	HC1-0625-000		1	SHEET, COPY BOARD		
3	HC1-0645-000		2	SHAFT, HINGE		
4	HM1-0251-000		1	DOCUMENT GUIDE ASS'Y		
5	XA9-0476-000		2	SCREW, TP M3X8		

FIGURE 16
PC-D320, imageCLASS D320/D323 COPY BOARD COVER
ASS'Y

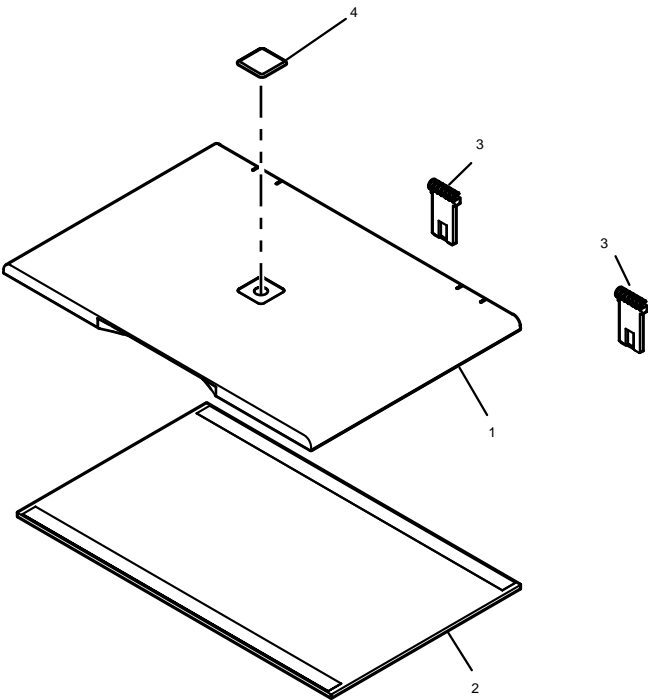


FIGURE & KEY NO.	PARTS NUMBER	R A N K	Q'TY	DESCRIPTION	SERIAL NUMBER/ REMARKS	S V C
1	HC1-0611-000		1	COVER, COPY BOARD		
2	HC1-0626-000		1	SHEET, COPY BOARD		
3	HC1-0645-000		2	SHAFT, HINGE		
4	HC1-0649-000		1	CANON, LOGO		

FIGURE 17
PC-D320, imageCLASS D320/D323, PC-D340 OPERATION
PANEL ASS'Y

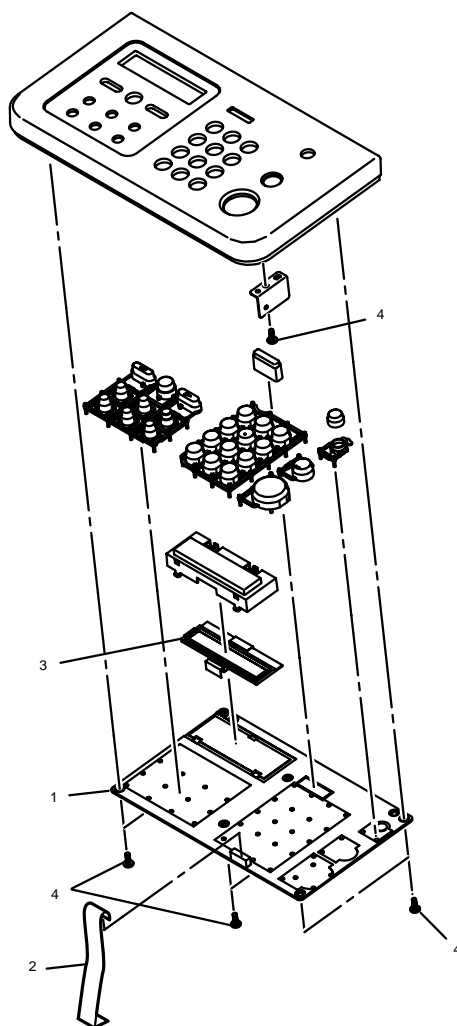


FIGURE & KEY NO.	PARTS NUMBER	R A N K	Q'TY	DESCRIPTION	SERIAL NUMBER/ REMARKS	S V C
1	HG1-4558-000		1	OPCNT BOARD ASS'Y		
2	HH2-3282-000		1	CABLE, FLAT, 11P		
3	HH7-2747-000		1	LCD UNIT		
4	XB4-7300-807		7	SCREW, TAP TIGHT, BINDING HEAD		

FIGURE 18
FAX-L400, imageCLASS D380/D383 OPERATION PANEL
ASS'Y

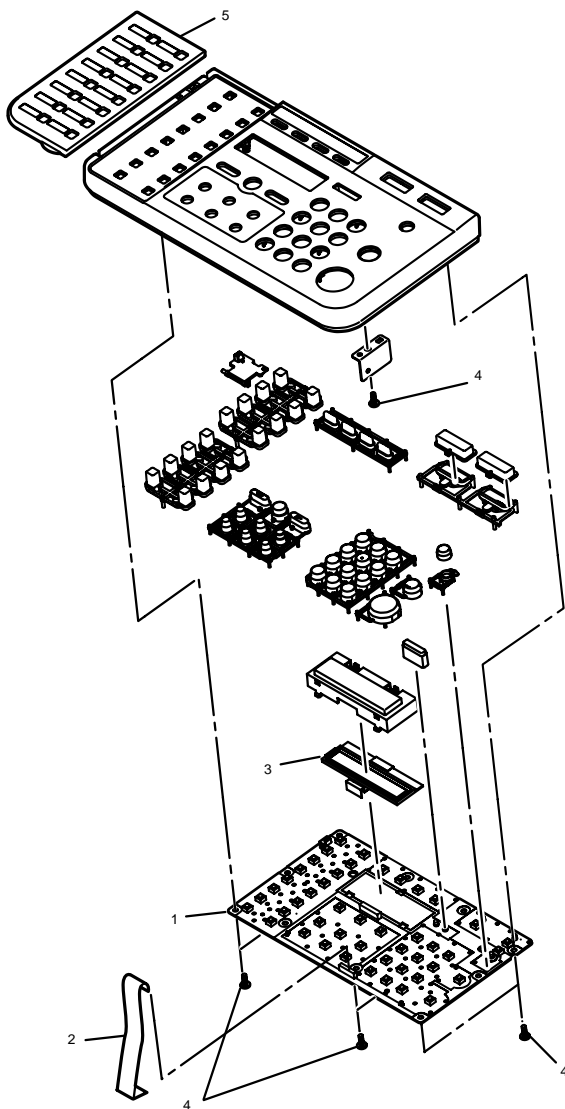


FIGURE & KEY NO.	PARTS NUMBER	R A N K	Q'TY	DESCRIPTION	SERIAL NUMBER/ REMARKS	S V C
1	HG1-4560-000		1	OPCNT BOARD ASS'Y		
2	HH2-3262-000		1	CABLE, FLAT, 15P		
3	HH7-2747-000		1	LCD UNIT		
4	XB4-7300-807		11	SCREW, TAP TIGHT, BINDING HEAD		
5	HC1-0543-000		1	COVER, ONE-TOUCH DIAL		

FIGURE 19
PC-D340, FAX-L400, imageCLASS D380/D383
DOCUMENT FEED ASS'Y

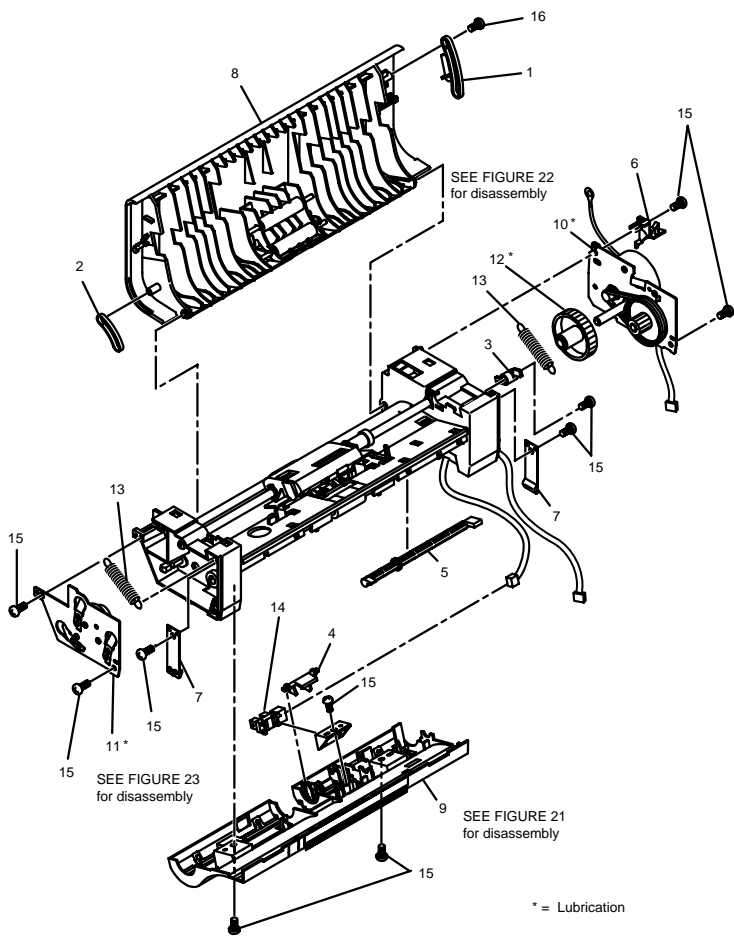


FIGURE & KEY NO.	PARTS NUMBER	R A N K	Q'TY	DESCRIPTION	SERIAL NUMBER/ REMARKS	S V C
1	HC1-0560-000	N	1	STOPPER, REAR		
2	HC1-0561-000	N	1	STOPPER, FRONT		
3	HC1-0562-000		1	LEVER, TURNING		
4	HC1-0565-000		1	ARM, DETECTION (DES)		
5	HC1-0583-000		1	LEVER, DOCUMENT RELEASE		
6	HC1-0601-000		1	GUIDE, CABLE		
7	HL1-0065-000		2	SPRING, LOCK		
8	HM1-0253-000		1	UPPER DOCUMENT FEED ASS'Y		
9	HM1-0254-000		1	LOWER DOCUMENT FEED ASS'Y		
10	HM1-0255-000		1	DOCUMENT FEED MOTOR ASS'Y		
11	HM1-0256-000		1	DOCUMENT FEED GEAR ASS'Y		
12	HU1-0051-000		1	GEAR, 21/69T		
13	HU1-2049-000		2	SPRING, STOPPER		
14	WG8-5362-000		1	PHOTO-INTERRUPTER, TLP1241		
15	XB4-7300-807		10	SCREW, TAP TIGHT, BINDING HEAD		
16	XA9-0476-000		1	SCREW, TP M3X8		

FIGURE 20

PC-D340, FAX-L400, imageCLASS D380/D383 MIDDLE
DOCUMENT FEED ASS'Y

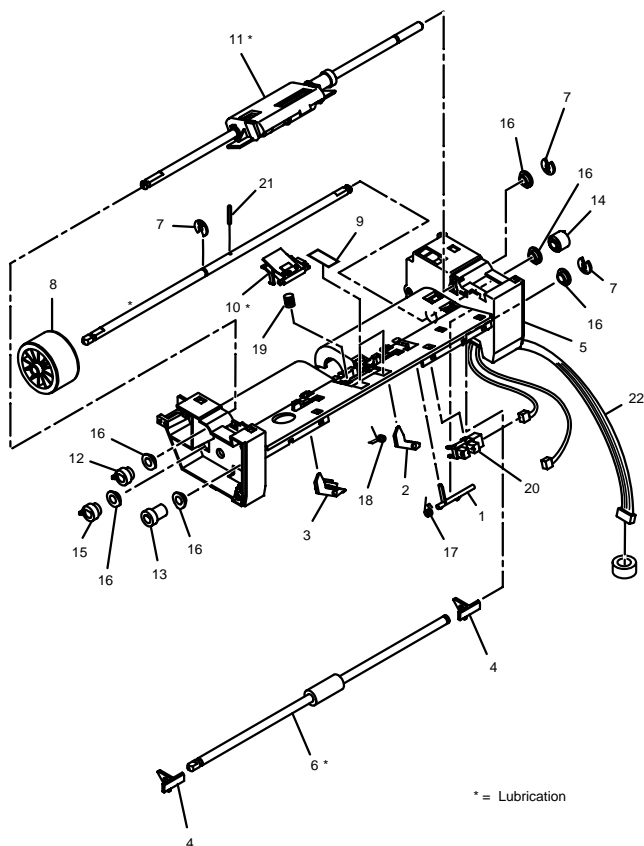


FIGURE & KEY NO.	PARTS NUMBER	R A N K	Q'TY	DESCRIPTION	SERIAL NUMBER/ REMARKS	S V C
1	HC1-0579-000		1	ARM, DETECTION (DS)		
2	HC1-0580-000		1	STOPPER, DOCUMENT, REAR		
3	HC1-0581-000		1	STOPPER, DOCUMENT, FRONT		
4	HC1-0582-000		2	ARM, DOCUMENT PRESSURE		
5	HC1-0584-000		1	FRAME, MIDDLE DOCUMENT FEED		
6	HC1-0585-000		1	ROLLER, DOCUMENT EJECT		
7	HC1-0586-000		3	RETAINING RING (E-TYPE)		
8	HC1-0590-000		1	ROLLER, DOCUMENT FEED		
9	HC1-0602-000		2	SHEET		
10	HM1-0258-000		1	SEPARATION GUIDE UNIT		
11	HM1-0259-000		1	SEPARATION ROLLER ASS'Y		
12	HU1-0044-000		1	GEAR, 22T		
13	HU1-0045-000		1	GEAR, 22T		
14	HU1-0046-000		1	GEAR, 22T		
15	HU1-0047-000		1	GEAR, 22T		
16	HU1-1022-000		6	BUSHING		
17	HU1-2042-000		1	SPRING, DS ARM		
18	HU1-2043-000		1	SPRING, DOCUMENT STOPPER		
19	HU1-2046-000		1	SPRING, ADF		
20	WG8-5362-000		1	PHOTO-INTERRUPTER, TLP1241		
21	XD9-0219-000		1	PIN		
22	HG1-4456-000		1	CABLE WITH CONNECTOR, 6P		

FIGURE 21
PC-D340, FAX-L400, imageCLASS D380/D383 LOWER
DOCUMENT FEED ASS'Y

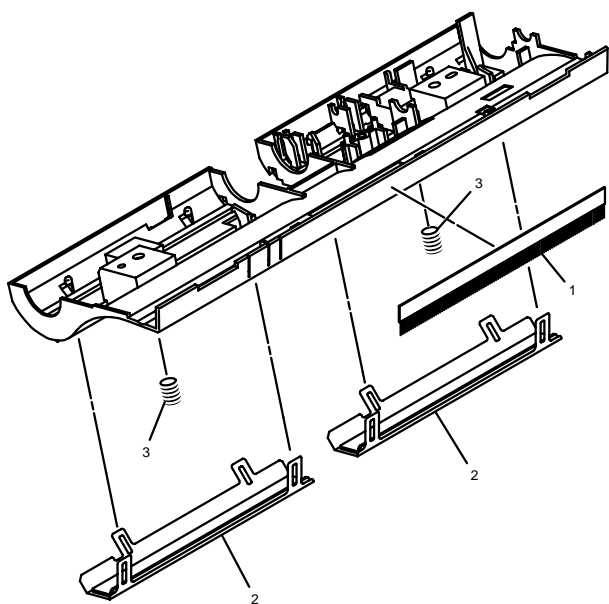


FIGURE & KEY NO.	PARTS NUMBER	R A N K	Q'TY	DESCRIPTION	SERIAL NUMBER/ REMARKS	S V C
1	HB1-4072-000		1	BRUSH, STATIC DISCHARGE		
2	HL1-0066-000		2	WHITE SHEET UNIT		
3	HU1-2047-000		2	SPRING		

FIGURE 22
PC-D340, FAX-L400, imageCLASS D380/D383
DOCUMENT FEED MOTOR ASS'Y

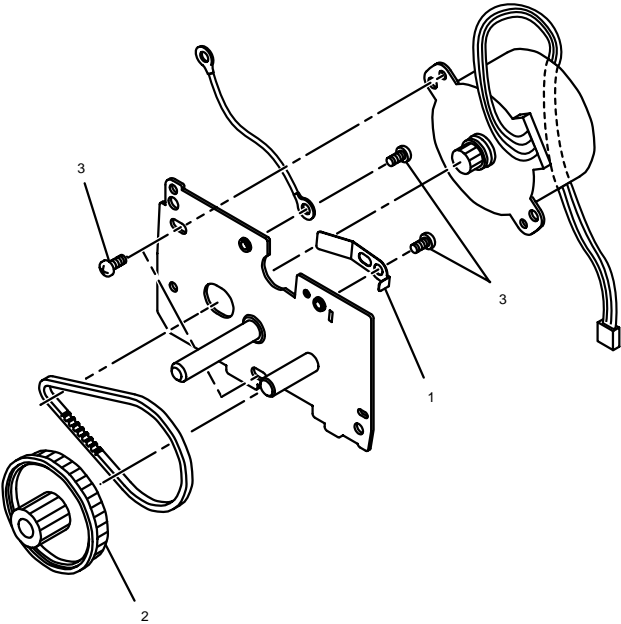


FIGURE & KEY NO.	PARTS NUMBER	R A N K	Q'TY	DESCRIPTION	SERIAL NUMBER/ REMARKS	S V C
1	HC1-0572-000		1	PLATE, GROUNDING		
2	HU1-0052-000		1	GEAR, 22/75T		
3	XB1-2300-407		4	SCREW, BH3X4 (S)		

FIGURE 23
PC-D340, FAX-L400, imageCLASS D380/D383
DOCUMENT FEED GEAR ASS'Y

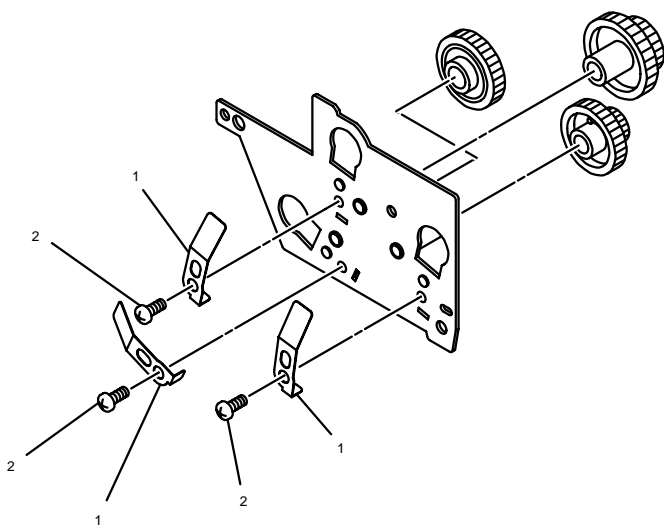


FIGURE & KEY NO.	PARTS NUMBER	R A N K	Q'TY	DESCRIPTION	SERIAL NUMBER/ REMARKS	S V C
1	HC1-0572-000		3	PLATE, GROUNDING		
2	XB1-2300-407		3	SCREW, BH3X4 (S)		

FIGURE 24
DOCUMENT READ SECTION

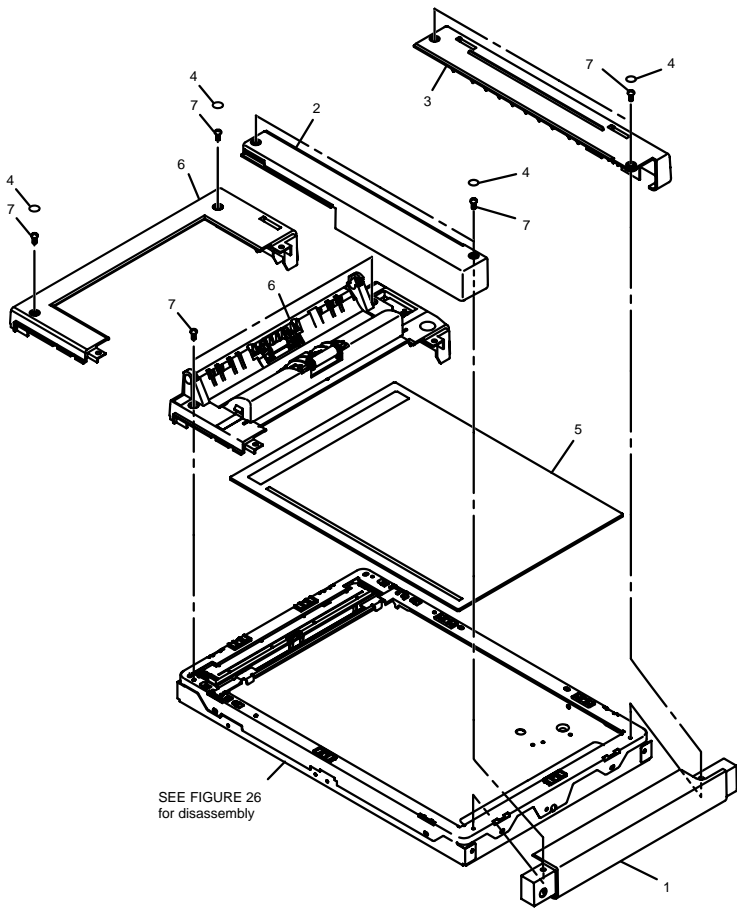


FIGURE & KEY NO.	PARTS NUMBER	R A N K	Q'TY	DESCRIPTION	SERIAL NUMBER/ REMARKS	S V C
1	HC1-0607-000		1	COVER, FLAT BED, RIGHT		
2	HC1-0608-000		1	COVER, FLAT BED, FRONT		
3	HC1-0609-000		1	COVER, FLAT BED, REAR		
4	HC1-0658-000		4	SHEET, BLINKER	PC-D340, FAX-L400, imageCLASS D380/D383	
4	HC1-0658-000		6	SHEET, BLINKER	PC-D320, imageCLASS D320/D323	
5	HL1-0060-000		1	COPY BOARD GLASS UNIT	PC-D320, imageCLASS D320/D323	
5	HL1-0062-000		1	COPY BOARD GLASS UNIT	PC-D340, FAX-L400, imageCLASS D380/D383	
6	HC1-0606-000		1	COVER, FLAT BED, LEFT	PC-D320, imageCLASS D320/D323	
6	HM1-0249-000		1	ADF BASE ASS'Y	PC-D340, FAX-L400, imageCLASS D380/D383	
7	XB1-2300-609		6	SCREW, MACHINE M3X6		

FIGURE 25
PC-D340, FAX-L400, imageCLASS D380/D383 ADF BASE
ASS'Y

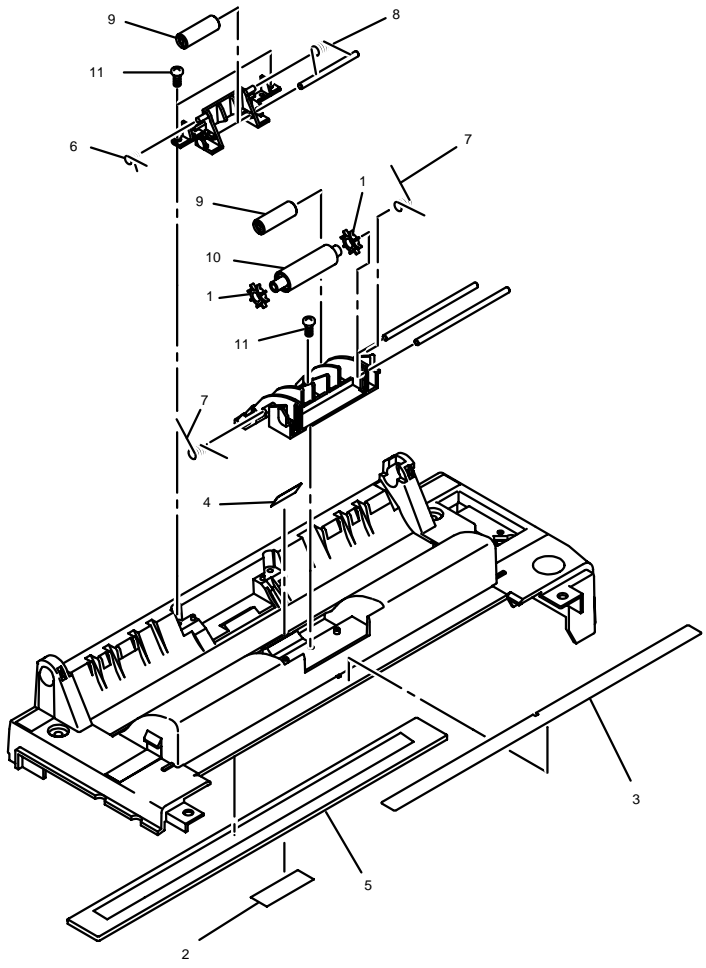


FIGURE & KEY NO.	PARTS NUMBER	R A N K	Q'TY	DESCRIPTION	SERIAL NUMBER/ REMARKS	S V C
1	HC1-0604-000		2	ROLLER, DOCUMENT PRESSURE		
2	HC1-0650-000		1	SHEET		
3	HC1-0652-000		1	LABEL, DOCUMENT SIZE		
4	HC1-0656-000		1	SHEET		
5	HL1-0069-000		1	GLASS, DOCUMENT FEED ASS'Y		
6	HU1-2040-000		1	SPRING		
7	HU1-2041-000		2	SPRING		
8	HU1-2051-000		1	SPRING		
9	HU1-6002-000		2	ROLLER, BACK-UP		
10	HU1-6004-000		1	ROLLER, DOCUMENT DELIVERY		
11	XB4-7300-807		3	SCREW, TAP TIGHT, BINDING HEAD		

FIGURE 26
FLAT BED ASS'Y

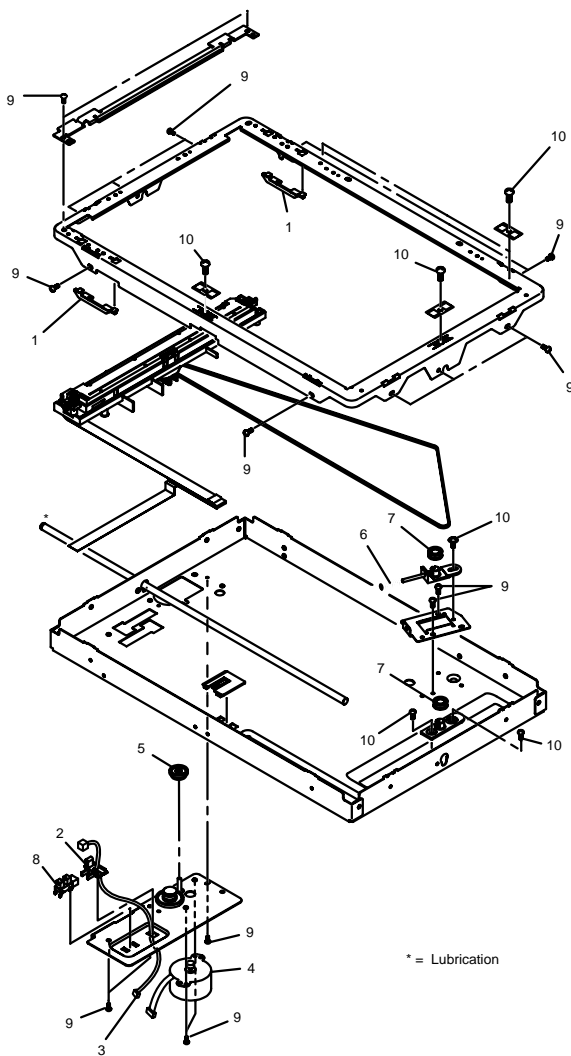
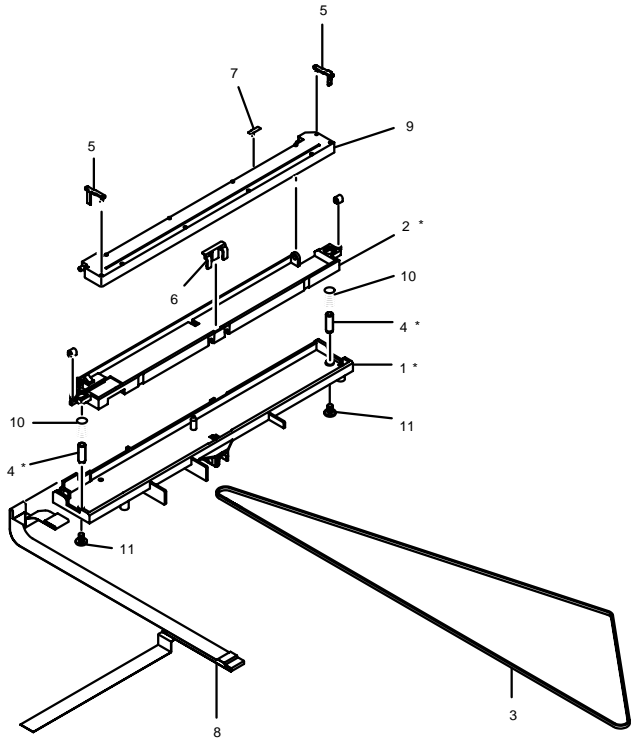


FIGURE & KEY NO.	PARTS NUMBER	R A N K	Q'TY	DESCRIPTION	SERIAL NUMBER/ REMARKS	S V C
1	HC1-0638-000		2	SPACER, CS CARRIAGE	PC-D340, FAX-L400, imageCLASS D380/D383	
2	HC1-0646-000		1	COVER, HP SENSOR		
3	HG1-4452-000		1	CABLE WITH CONNECTOR, 3P		
4	HH7-2692-000		1	MOTOR, STEPPING		
5	HU1-0039-000		1	GEAR, 36/45T		
6	HU1-2037-000		1	SPRING		
7	HU1-3002-000		2	PULLEY		
8	WG8-5362-000		1	PHOTO-INTERRUPTER, TLP1241		
9	XB1-2300-407		19	SCREW, BH3X4 (S)		
10	XB6-7300-409		7	SCREW, MACHINE, M3X4		

FIGURE 27
CONTACT SENSOR



* = Lubrication

FIGURE & KEY NO.	PARTS NUMBER	R A N K	Q'TY	DESCRIPTION	SERIAL NUMBER/ REMARKS	S V C
1	HC1-0617-000		1	CARRIAGE, CS UNIT		
2	HC1-0618-000		1	HOLDER, CS UNIT		
3	HC1-0629-000		1	BELT, COGGED, L882		
4	HC1-0631-000		2	SHAFT, CARRIAGE		
5	HC1-0641-000		2	SPACER, CS		
6	HC1-0642-000		1	STOPPER, CS		
7	HC1-0655-000		1	SHEET, CS		
8	HH2-3222-000		1	CABLE, FLAT, 12P		
9	HL1-0070-000		1	CONTACT SENSOR UNIT		
10	HU1-2036-000		2	SPRING, CS		
11	XB1-2300-407		2	SCREW, BH3X4 (S)		

FIGURE 28
EJECT PAPER FRAME ASS'Y

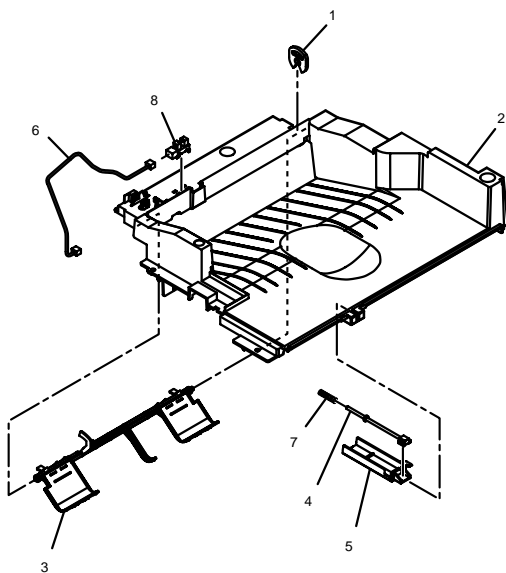


FIGURE & KEY NO.	PARTS NUMBER	R A N K	Q'TY	DESCRIPTION	SERIAL NUMBER/ REMARKS	S V C
1	HB1-4394-000		1	RETAINING RING (E-TYPE)		
2	HC1-0483-000		1	COVER, FACE-DOWN		
3	HC1-0484-000		1	LEVER, REC. PAPER PRESSURE		
4	HC1-0525-000		1	ROD, SHUTTER		
5	HC1-0526-000		1	COVER, SHUTTER ROD		
6	HG1-4453-000		1	CABLE WITH CONNECTOR, 3P		
7	HU1-2039-000		1	SPRING, SHUTTER LEVER		
8	WG8-5362-000		1	PHOTO-INTERRUPTER, TLP1241		

FIGURE 29
FIXING ASS'Y

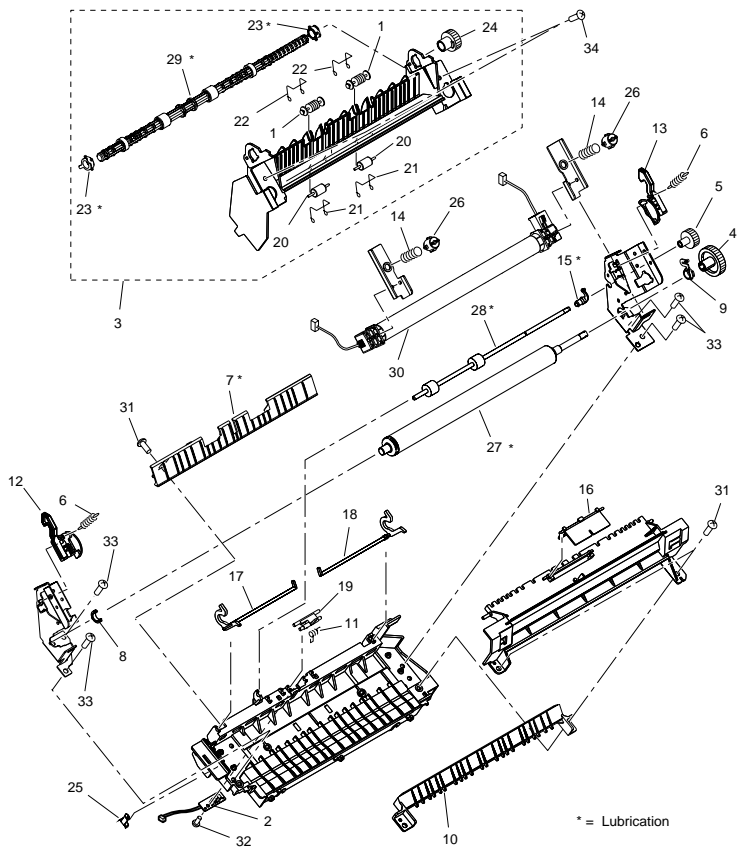


FIGURE & KEY NO.	PARTS NUMBER	R A N K	Q'TY	DESCRIPTION	SERIAL NUMBER/ REMARKS	S V C
1	HC1-0491-000		2	COLLAR, FACE-DOWN		
2	HG1-4448-000		1	PAPER DELIVERY SENSOR UNIT		
3	HM1-0245-000		1	FACE-DOWN DELIVERY UNIT		
4	RA0-1088-000		1	GEAR, 29T		
5	RA0-1089-000		1	GEAR, 17T		
6	RA0-1090-000		2	SPRING, TENSION		
7	RA0-1091-000		1	GUIDE, PAPER DELIVERY		
8	RA0-1094-000		1	BUSHING		
9	RA0-1095-000		1	BUSHING		
10	RA0-1096-000		1	GUIDE, PAPER		
11	RA0-1099-000		1	SPRING, TORSION		
12	RA0-1100-000		1	LEVER, PRESSURE RELEASE		
13	RA0-1101-000		1	LEVER, PRESSURE RELEASE		
14	RA0-1103-000		2	SPRING, COMPRESSION		
15	RA0-1104-000		1	BUSHING		
16	RA0-1105-000		1	FLAG		
17	RA0-1106-000		1	LEVER, SENSOR		
18	RA0-1107-000		1	LEVER, SENSOR		
19	RA0-1110-000		1	FLAG, SENSOR		
20	RA0-1111-000		2	ROLLER, FACE-UP		
21	RA0-1115-000		2	SPRING, TORSION		
22	RA0-1116-000		2	SPRING, TORSION		
23	RA0-1117-000		2	BUSHING		
24	RA0-1118-000		1	GEAR, 19T		
25	RA0-1121-000		1	PLATE, CONTACT		
26	RA0-1189-000		2	RETAINER, SPRING		
27	RF0-1002-000		1	ROLLER, PRESSURE		
28	RF0-1003-000		1	ROLLER, FACE-UP		
29	RF0-1004-030		1	ROLLER, FACE-DOWN		
30	RG0-1027-000		1	FIXING FILM ASS'Y	EXCEPT TW	
30	RG0-1009-000		1	FIXING FILM ASS'Y	TW	
31	XA9-1292-000		3	SCREW, M4X14		

FIGURE & KEY NO.	PARTS NUMBER	R A N K	Q'TY	DESCRIPTION	SERIAL NUMBER/ REMARKS	S V C
32	XB4-7300-807		1	SCREW, TAP TIGHT, BINDING HEAD		
33	XB4-7401-005		4	SCREW, TAPPING, TRUSS HEAD, M4X10		
34	XB6-7300-607		2	SCREW, TP, M3X6		

FIGURE 30
FRONT PLATE ASS'Y

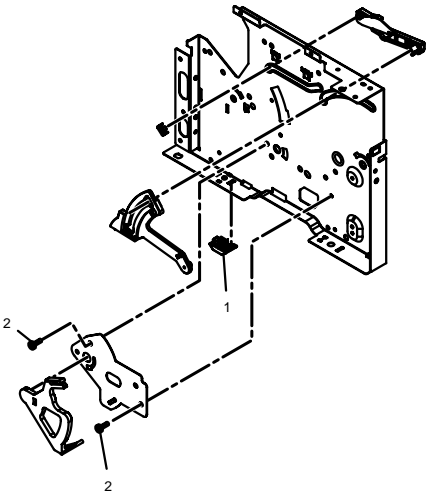


FIGURE & KEY NO.	PARTS NUMBER	R A N K	Q'TY	DESCRIPTION	SERIAL NUMBER/ REMARKS	S V C
1	RA0-1412-000		1	FOOT		
2	XB1-2300-407		2	SCREW, BH3X4 (S)		

FIGURE 31
REAR PLATE ASS'Y

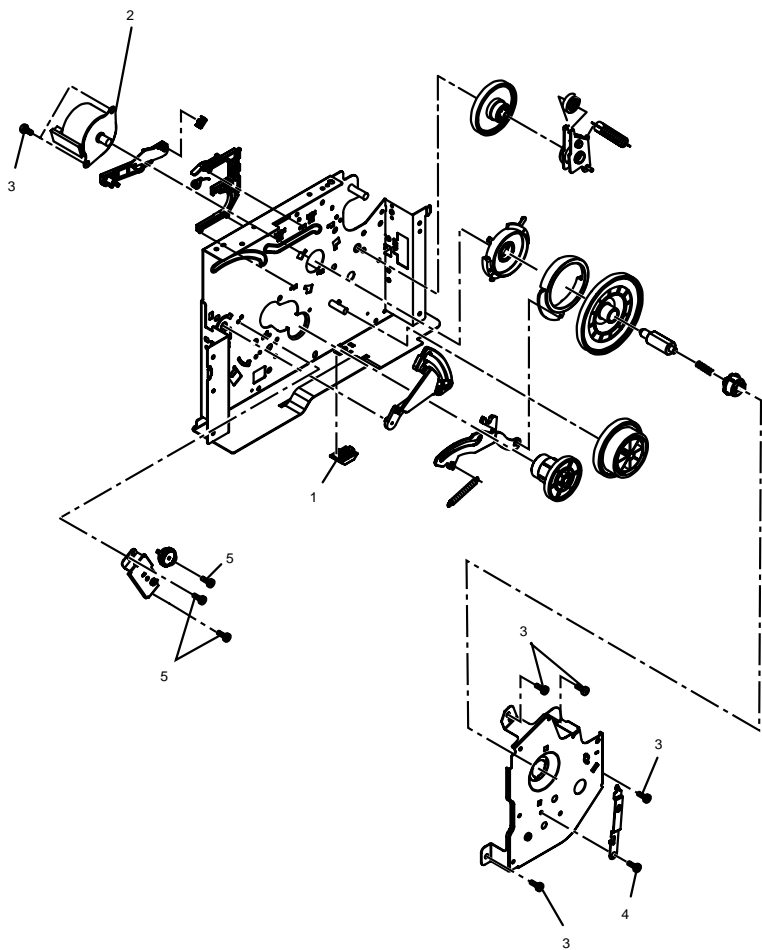


FIGURE & KEY NO.	PARTS NUMBER	R A N K	Q'TY	DESCRIPTION	SERIAL NUMBER/ REMARKS	S V C
1	RA0-1412-000		1	FOOT		
2	RH7-1473-020		1	MOTOR, STEPPING		
3	XB1-2300-407		6	SCREW, BH3X4 (S)		
4	XB2-7300-607		1	SCREW, M3X6		
5	XB6-7300-607		3	SCREW, TP, M3X6		

FIGURE 32

PC-D320, imageCLASS D320/D323, PC-D340 SCNT
BOARD ASS'Y

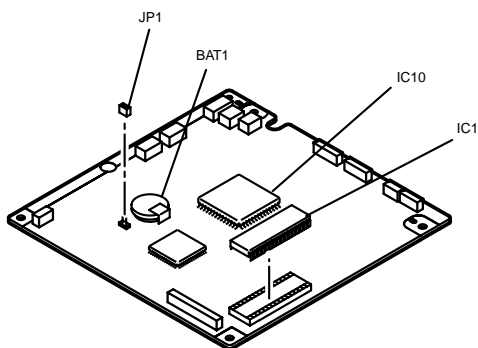


FIGURE & KEY NO.	PARTS NUMBER	R A N K	Q'TY	DESCRIPTION	SERIAL NUMBER/ REMARKS	S V C
BAT1	WK1-5134-000		1	BATTERY, LITHIUM, CR2032THJ6		
IC1	HH4-3715-030		1	IC,MR27V1652E-P7RAZ010,OTP-ROM		
IC10	HH4-3706-000		1	IC, MB87J8690, ASIC		
JP1	WS1-5397-000	N	1	PLUG, JUMPER		

FIGURE 33
FAX-L400, imageCLASS D380/D383 SCNT BOARD ASS'Y

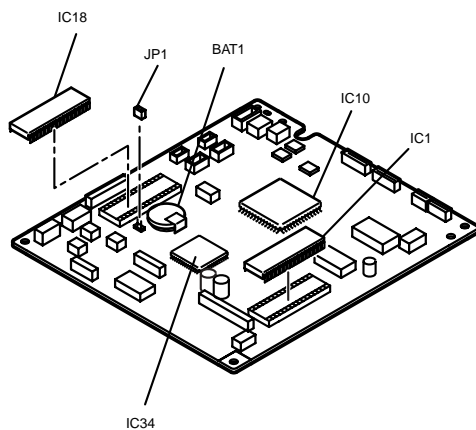


FIGURE & KEY NO.	PARTS NUMBER	R A N K	Q'TY	DESCRIPTION	SERIAL NUMBER/ REMARKS	S V C
BAT1	WK1-5134-000		1	BATTERY, LITHIUM, CR2032THJ6		
IC1	HH4-3710-060		1	IC,MR27V1652E-U8RA,MASK-ROM	EXCEPT CN	
IC1	HH4-4044-000		1	IC,MR27V1652ERA,OTP-ROM	CN	
IC10	HH4-3706-000		1	IC, MB87J8690, ASIC		
IC18	HH4-3711-060		1	IC, MR27V1652E-U9RA, OTP-ROM	EXCEPT CN	
IC18	HH4-4045-000		1	IC,MR27V1652ERA,OTP-ROM	CN	
IC34	HH4-4008-000		1	IC, UPD703107AGJ-150-UEN, MCU		
JP1	WS1-5397-000	N	1	PLUG, JUMPER		

FIGURE 34
ECNT BOARD ASS'Y

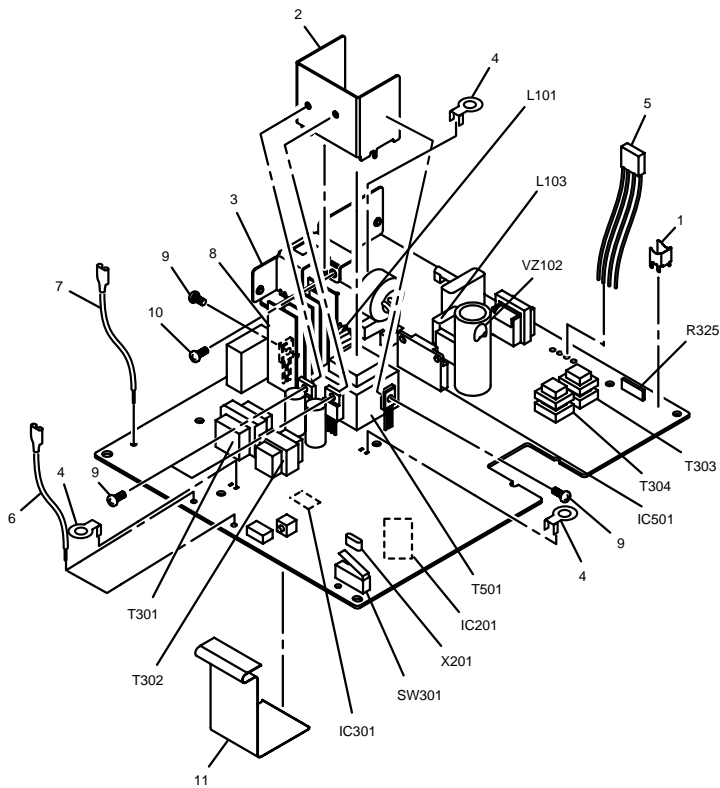


FIGURE & KEY NO.	PARTS NUMBER	R A N K	Q'TY	DESCRIPTION	SERIAL NUMBER/ REMARKS	S V C
1	RA0-1123-000		1	PLATE, TERMINAL		
2	RA0-1125-000		1	HEATSINK		
3	RA0-1126-000		1	HOLDER, CONNECTOR		
4	RB1-7306-000		3	PLATE, GROUNDING		
5	RG0-1073-000		1	CABLE, MAIN MOTOR		
6	RG0-1078-000		2	CABLE, HIGH VOLTAGE		
7	RG0-1079-000		1	CABLE, HIGH VOLTAGE		
8	RH7-8100-000		1	HEATSINK		
9	XA9-0235-000		4	SCREW		
10	XB2-7400-606		1	SCREW, TOOTHED WASHER, M4X6		
11	HH2-3220-000		1	CABLE, FLAT, 26P		
IC201	RH4-0296-000		1	IC, MB89063, M-CON		
IC301	RH4-5448-000		1	IC, LM324NSR-A, OPAMP		
IC501	RH4-5429-000		1	IC, STR-Z2062, REGULATOR	EXCEPT TW	
IC501	RH4-5428-000		1	IC, STR-Z2012, REGULATOR	TW	
L101	RH3-0193-000		1	INDUCTOR, SK-08MD-4ZY		
L103	RH3-0235-000		1	COIL, CHOKE	EXCEPT TW	
R325	RH6-3858-000		1	RESISTOR, METAL		
SW301	RH7-6058-000		1	SWITCH, MICRO		
T301	RH3-0300-000		1	TRANSFORMER, 500VA UNDER		
T302	RH3-0284-000		1	TRANSFORMER, 500VA		
T303	RH3-0303-000		1	TRANSFORMER, 500VA UNDER		
T304	RH3-0303-000		1	TRANSFORMER, 500VA UNDER		
T501	RH3-0295-000		1	TRANSFORMER, 500VA UNDER	EXCEPT TW	
T501	RH3-0294-000		1	TRANSFORMER, 500VA UNDER	TW	
VZ102	RH3-8049-000		1	VARISTOR, NV270D05C		
X201	RH5-0124-000		1	OSCILLATOR, QUARTZ		

FIGURE 35
FAX-L400, imageCLASS D380/D383 NCU BOARD ASS'Y

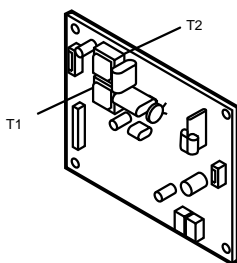
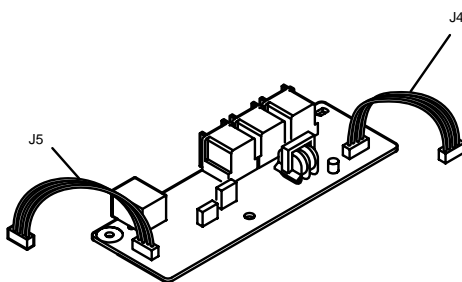


FIGURE & KEY NO.	PARTS NUMBER	R A N K	Q'TY	DESCRIPTION	SERIAL NUMBER/ REMARKS	S V C
T1	HH7-2720-000		1	TRANSFORMER, AUDIO		
T2	HH7-2721-000		1	TRANSFORMER, AUDIO	EUR DE FR CH AT ZA TW	
IC5	HH7-2528-000		1	IC, THS-65, HYBRID	KR CN	

FIGURE 36
MODULAR/USB BOARD ASS'Y

FAX-L400



PC-D320/PC-D340

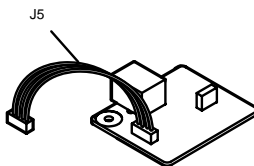
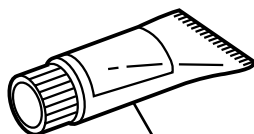


FIGURE & KEY NO.	PARTS NUMBER	R A N K	Q'TY	DESCRIPTION	SERIAL NUMBER/ REMARKS	S V C
J4	HG1-4459-000		1	CABLE WITH CONNECTOR, 5P	FAX-L400, imageCLASS D380/D383	
J5	HG1-4455-000		1	CABLE WITH CONNECTOR, 4P		

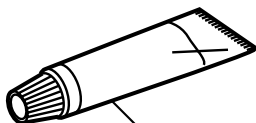
FIGURE 37
TOOLS



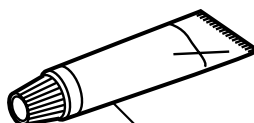
T1



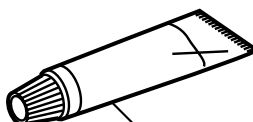
T2



T3



T4



T5

FIGURE & KEY NO.	PARTS NUMBER	R A N K	Q'TY	DESCRIPTION	SERIAL NUMBER/ REMARKS	S V C
T1	CK-0562-000		1	LUBE, MOLYKOTE PG-641 GREASE		
T2	CK-8006-000		1	ELECTRICITY GREASE (IF-20)		
T3	CK-8007-000		1	LUBE, MOLYKOTE 41 GREASE		
T4	HY9-0007-000		1	LUBE, MOLYKOTE EM-50L, GREASE		
T5	HY9-0023-000		1	LUBE, MOLYKOTE EMD-110, GREASE		

Prepared by
OFFICE IMAGING PRODUCTS QUALITY ASSURANCE CENTER
CANON INC.

Canon