

# MP520

## PARTS CATALOG

REVISION 0

2178B001AA	MP520 / 100V(JP)
2178B002AA	MP520 / 120V(US)
2178B003AA	MP520 / 120V(CA)
2178B004AA	MP520 / 120V-240V(LAM)
2178B006AA	MP520 / 220V-240V(EUM)
2178B007AA	MP520 / 220V-240V(EMB)
2178B008AA	MP520 / 220V-240V(GB)
2178B009AA	MP520 / 220V-240V(FR)
2178B011AA	MP520 / 220V-240V(AU)
2178B012AA	MP520 / 220V-240V(ASA)
2178B013AA	MP520 / 220V-240V(HK)
2178B014AA	MP520 / 220V-240V(CN)
2178B015AA	MP520 / 100V-120V(TW)

**Canon**

JUL. 2007

**QY8-31D8-000**

COPYRIGHT © 2007 CANON INC. CANON MP520 0707 N 0.00-0

**TONER**  
[www.tonerplus.com.ua](http://www.tonerplus.com.ua)

---

## **Application**

This manual has been issued by Canon Inc. for qualified person to learn technical theory, installation, maintenance, and repair of products. This manual covers all localities where the products are sold. For this reason, there may be information in this manual that does not apply to your locality.

## **Corrections**

This manual could include technical inaccuracies or typographical errors due to improvements or changes in the products. When changes occur in applicable products or in the content of this manual, Canon will release technical information as the need arises. In the event of major changes in the contents of this manual over a long or short period, Canon will issue a new editions of this manual. The following paragraph does not apply to any countries where such provisions are inconsistent with local law.

## **Trademarks**

The product names and company names described in this manual are the registered trademarks of the individual companies.

## **Copyright**

This manual is copyrighted with all rights reserved. Under the copyright laws, this manual may not be copied, reproduced or translated into another language, in whole or in part, without the written consent of Canon Inc.

Copyright © 2007 by Canon Inc.

CANON INC.

Inkjet Device Quality Assurance Div. 1

451, Tsukagoshi, 3-chome, Saiwai-ku, Kawasaki-shi, Kanagawa 212-8530, Japan

This manual was created under Microsoft® Windows® 2000.

Parts layout pictures were edited using Adobe® Photoshop® 7.0. KEY No. were created using Adobe® Illustrator® 10.

HTML files were created using Microsoft® FrontPage® 2000.

---

## ABOUT THIS MANUAL

### A. ILLUSTRATION INDEX

For illustration index, the parts layout illustrations in this parts catalog are listed in abbreviated form in order of illustration number to identify the pages they appear on. To find an illustration of a part, see the ILLUSTRATION INDEX.

### B. PARTS LAYOUT & PARTS LIST

Parts layout illustration

#### a) Parts search

Find a part from the parts layout illustration and find its key number from the parts list to identify the part number and name. For screws, nuts, washers, lock washers, pins, spacers, see SCREWS & WASHERS LIST.

**Note:** If parts have the same or similar shape but different specifications, their key number is assigned to several part numbers and names in the parts list.

#### b) Parts replacement procedure

To replace parts, the parts layout illustrations have figure numbers according to the disassembly procedure of the product. The parts that require careful work are shown the illustration.

Parts list

#### a) FIGURE & KEY No.

The FIGURE & KEY No. column corresponds to the key numbers assigned to the parts in the parts layout illustration.

#### b) PART NUMBER

The PART NUMBER column gives the part numbers corresponding to the key numbers. To order a part, indicate the part number clearly.

**Note:** Parts marked NPN are not service parts.

#### c) RANK

The service parts with N in the RANK column are order parts.

#### d) QTY

The QTY column gives the number of parts in the corresponding components layout illustration.

#### e) DESCRIPTION

The DESCRIPTION column gives the part names in English.

To order a part, indicate the part name, too.

### C. OPTIONS & CONSUMABLES

These are illustrations and a list of units that can be used as optional consumable equipments.

### D. SCREWS & WASHERS LIST

This is a list of screws, nuts, washers, lock washers, pins, and spacers.

The QTY column does not give the number of parts used.

### E. TOOL LIST

This is a list of tools used for servicing products.

### F. NUMERICAL INDEX

All the parts listed in this parts catalog are arranged in order of part number. You can identify part locations and names from the NUMERICAL INDEX.

# Contents

## A. ILLUSTRATION INDEX ▶

## B. PARTS LAYOUT & PARTS LIST

**FIGURE 1** PRINTER & PRINT HEAD

**FIGURE 2** EXTERNAL COVERS

**FIGURE 3** SCANNER UNIT & LCD UNIT

**FIGURE 4** LOGIC BOARD & CARD BOARD

**FIGURE 5** BOTTOM CASE UNIT & INK ABSORBER

**FIGURE 6** SHEET FEED UNIT

**FIGURE 7** CARRIAGE UNIT & PURGE UNIT

**FIGURE 8** PAPER FEED PART

## C. OPTION & CONSUMABLES ▶

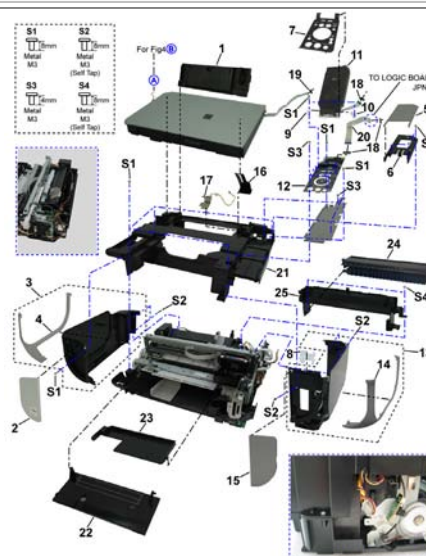
## D. SCREW & WASHER LIST ▶

## E. TOOL ▶

## F. NUMERICAL INDEX ▶

**This page intentionally left blank**

**FIGURE 2**      **EXTERNAL COVERS**



**FIGURE 4** LOGIC BOARD & CARD BOARD

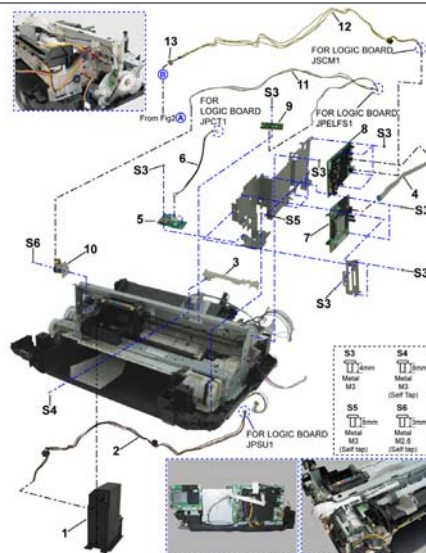
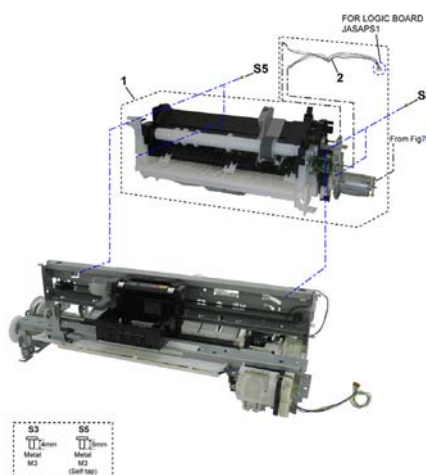
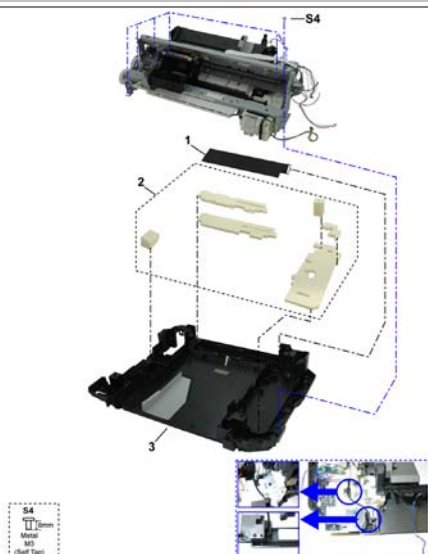
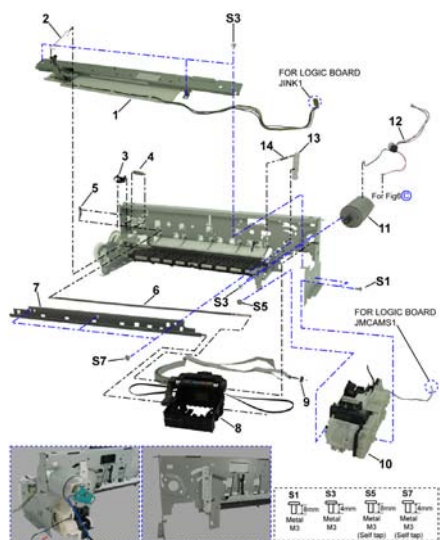


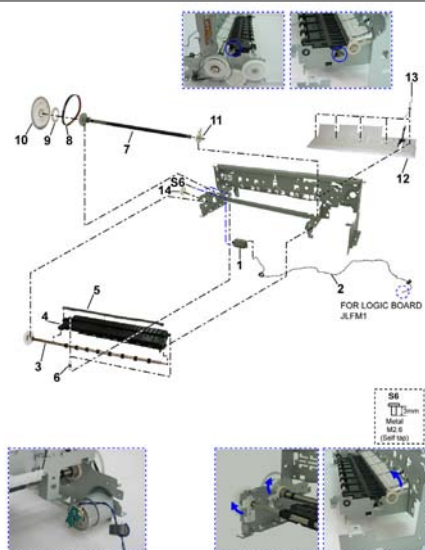
FIGURE 6 SHEET FEED UNIT



**FIGURE 7 CARRIAGE UNIT & PURGE UNIT**



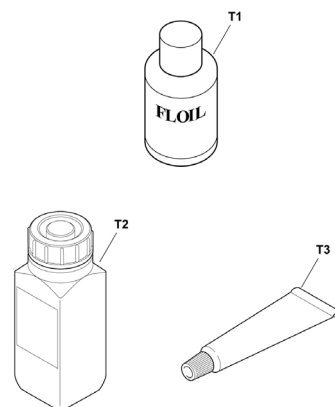
**FIGURE 8 PAPER FEED PART**



**FIGURE 9 OPTION & CONSUMABLES**



**FIGURE 10 TOOL**



## B. PARTS LAYOUT & PARTS LIST

[Contents](#)[ILLUSTRATION INDEX](#)[NUMERICAL INDEX](#)

FIGURE 1 PRINTER & PRINT HEAD

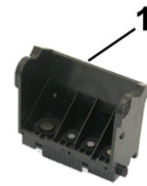




FIGURE & KEY No.		PART NUMBER	RANK	QTY	DESCRIPTION	REMARKS
1-	1	QY6-0070-000		1	PRINTER HEAD	
	2	QH2-2716-000		1	CORD, POWER	220V-240V(EUM, EMB, ASA, MY)
	2	QH2-2719-000		1	CORD, POWER	100V-120V
	2	QK1-0776-000		1	CORD, POWER	220V-240V(AU)
	2	QK1-2017-000		1	CORD, POWER	100V-120V(TW)
	2	QK1-3048-000		1	CORD, POWER	120V-240V(LAM, CHN)
	2	QK1-3761-000		1	CORD, POWER	100V(JP)
	2	WT3-5156-000		1	CORD, POWER	220V-240V(GB, HK)
	2	WT3-5160-000		1	CORD, POWER	220V-240V(KR)
	3	QC2-6357-000		1	STICKER, PANEL	CA

FIGURE 2 EXTERNAL COVERS

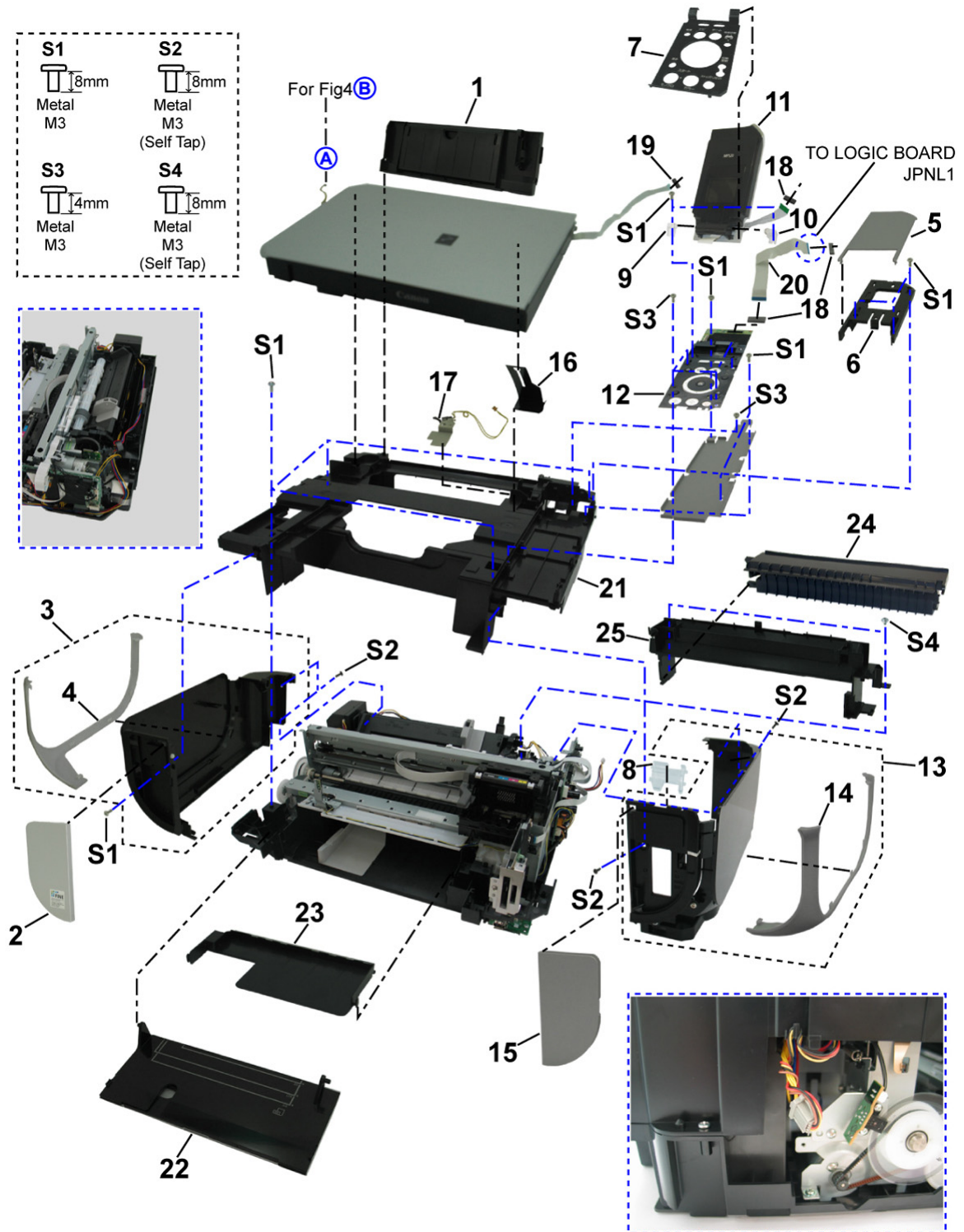


FIGURE & KEY No.		PART NUMBER	RANK	QTY	DESCRIPTION	REMARKS
2-	1	QM3-2636-000		1	ASF TRAY UNIT	
	2	QC2-5725-000		1	COVER, FRONT L	
	3	QM3-2635-000		1	SIDE COVER UNIT L	
	4	QC2-5728-000		1	COVER, SIDE DECORATION L	
	5	QC2-5756-000		1	COVER, REAR TOP	
	6	QC2-5755-000		1	FREME, REAR MIDDLE	
	7	QC2-5753-000		1	COVER, PANEL	US, CA, AU, ASA
	7	QC2-6352-000		1	COVER, PANEL	JP
	7	QC2-6353-000		1	COVER, PANEL	LAM, EUM, EMB, GB. CN
	7	QC2-6354-000		1	COVER, PANEL	HK, TW
	7	QC2-6356-000		1	COVER, PANEL	KR
	8	QC2-5759-000		1	GUIDE, LIGHT	
	9	QM3-4304-000		1	LCD HINGE UNIT L	
	10	QM3-4305-000		1	LCD HINGE UNIT R	
	11	QM3-2640-000		1	LCD UNIT	
	12	QM3-2639-000		1	OPERATION PANEL UNIT	
	13	QM3-2634-000		1	SIDE COVER UNIT R	
	14	QC2-5729-000		1	COVER, SIDE DECORATION R	
	15	QC2-5726-000		1	COVER, FRONT R	
	16	QC2-6110-000		1	SHEET, SCANNER	
	17	QM3-2638-000		1	SCANNER OPEN SW ASS'Y	
	18	QK1-3926-000		3	CORE, RING	
	19	QK1-3760-000		1	CORE	
	20	QK1-3810-000		1	FFC, PANEL	
	21	QC2-5718-000		1	MAIN CASE UNIT	
	22	QM3-2637-000		1	FRONT TRAY UNIT	
	23	QC2-5716-000		1	TRAY, OUTPUT	
	24	QC2-6075-000		1	COVER, ASF UNDER	
	25	QC2-5615-000		1	COVER, REAR	

FIGURE 3 SCANNER UNIT & LCD UNIT

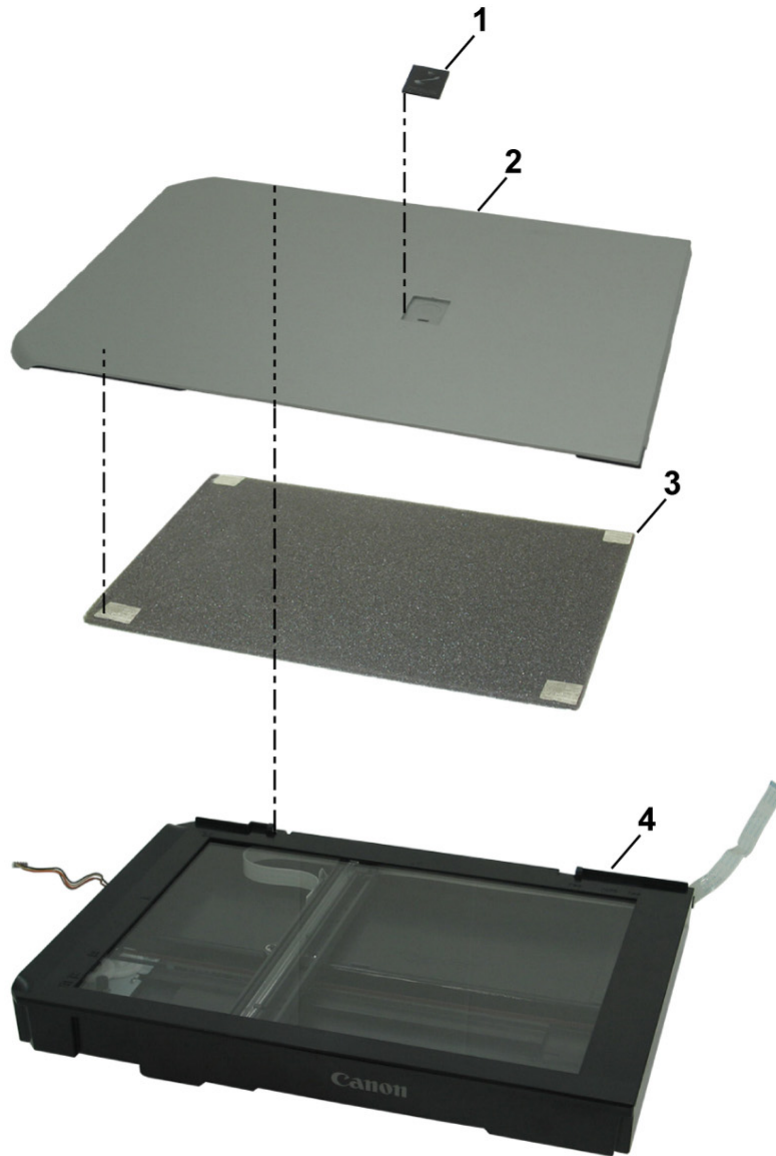


FIGURE & KEY No.		PART NUMBER	RANK	QTY	DESCRIPTION	REMARKS
3-	1	QC1-9023-000		1	EMBLEM	FOR JAPAN
	1	QC1-9024-000		1	EMBLEM	FOR OTHER REGIONS
	1	QC2-4900-000		1	EMBLEM	FOR FRANCE
	2	QM3-2642-000		1	DOCUMENT PRESSURE PLATE ASS'Y	
	3	QC2-5194-000		1	SHEET, DOCUMENT PRESSURE	
	4	QM3-2643-000		1	SCANNER UNIT	

FIGURE 4 LOGIC BOARD & CARD BOARD

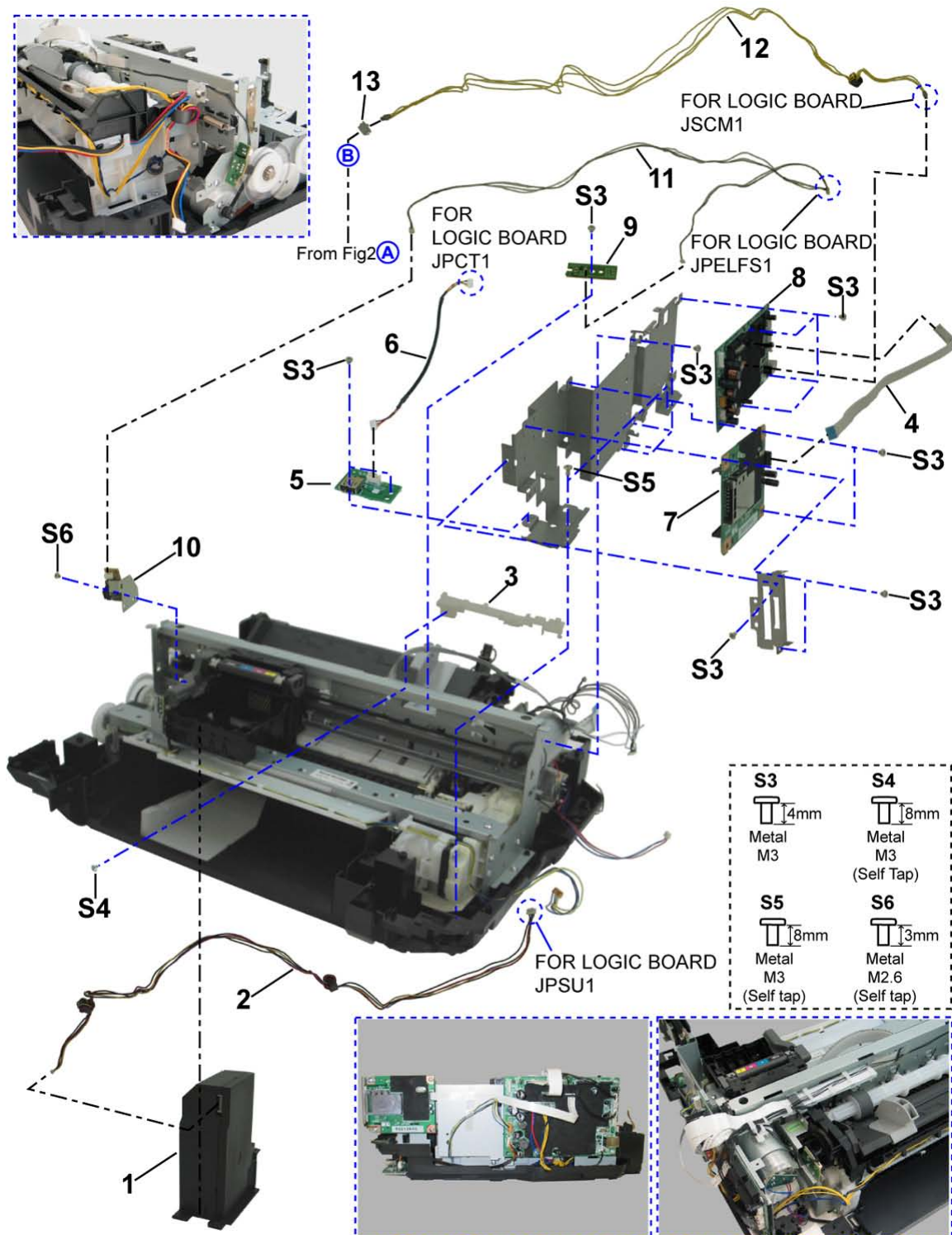


FIGURE & KEY No.		PART NUMBER	RANK	QTY	DESCRIPTION	REMARKS
4-	1	QK1-3520-000		1	AC ADAPTER: 100V-240V 50/60HZ	
	2	QM3-2583-000		1	DC HARNESS ASS'Y	
	3	QC2-5689-000		1	GUIDE, FFC	
	4	QK1-3807-000		1	FFC, MAIN CARD	
	5	QM3-2574-000		1	DCD BOARD ASS'Y	
	6	QM3-2580-000		1	DCD HARNESS ASS'Y	
	7	QM3-2603-000		1	CARD BOARD ASS'Y	
	8	QM3-2599-000		1	LOGIC BOARD	
	9	QM3-2571-000		1	PE SENSOR BOARD ASS'Y	
	10	QM3-2572-000		1	TIMING SENSOR ASS'Y	
	11	QM3-2577-000		1	LF PE SENSOR HARNESS	
	12	QM3-2593-000		1	SCANNER HARNESS ASS'Y	
	13	VS1-7165-004		1	CONNECTOR, CABLE	



FIGURE 5 BOTTOM CASE UNIT & INK ABSORBER

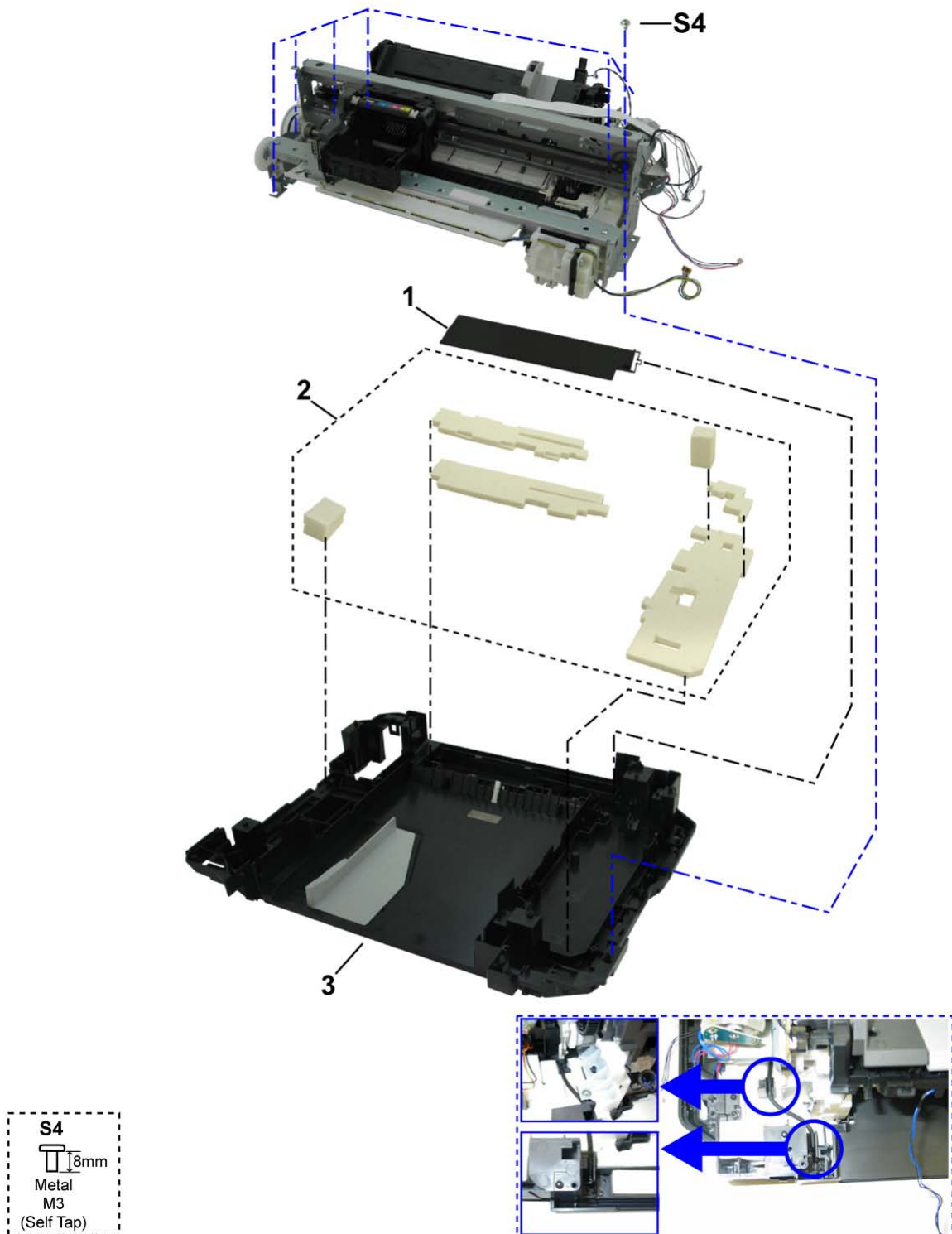




FIGURE & KEY No.		PART NUMBER	RANK	QTY	DESCRIPTION	REMARKS
5-	1	QC2-5614-000		1	COVER, ABSORBER	
	2	QY5-0192-000		1	ABSORBER KIT	
	3	QM3-2633-000		1	BOTTOM CASE UNIT	

**FIGURE 6 SHEET FEED UNIT**

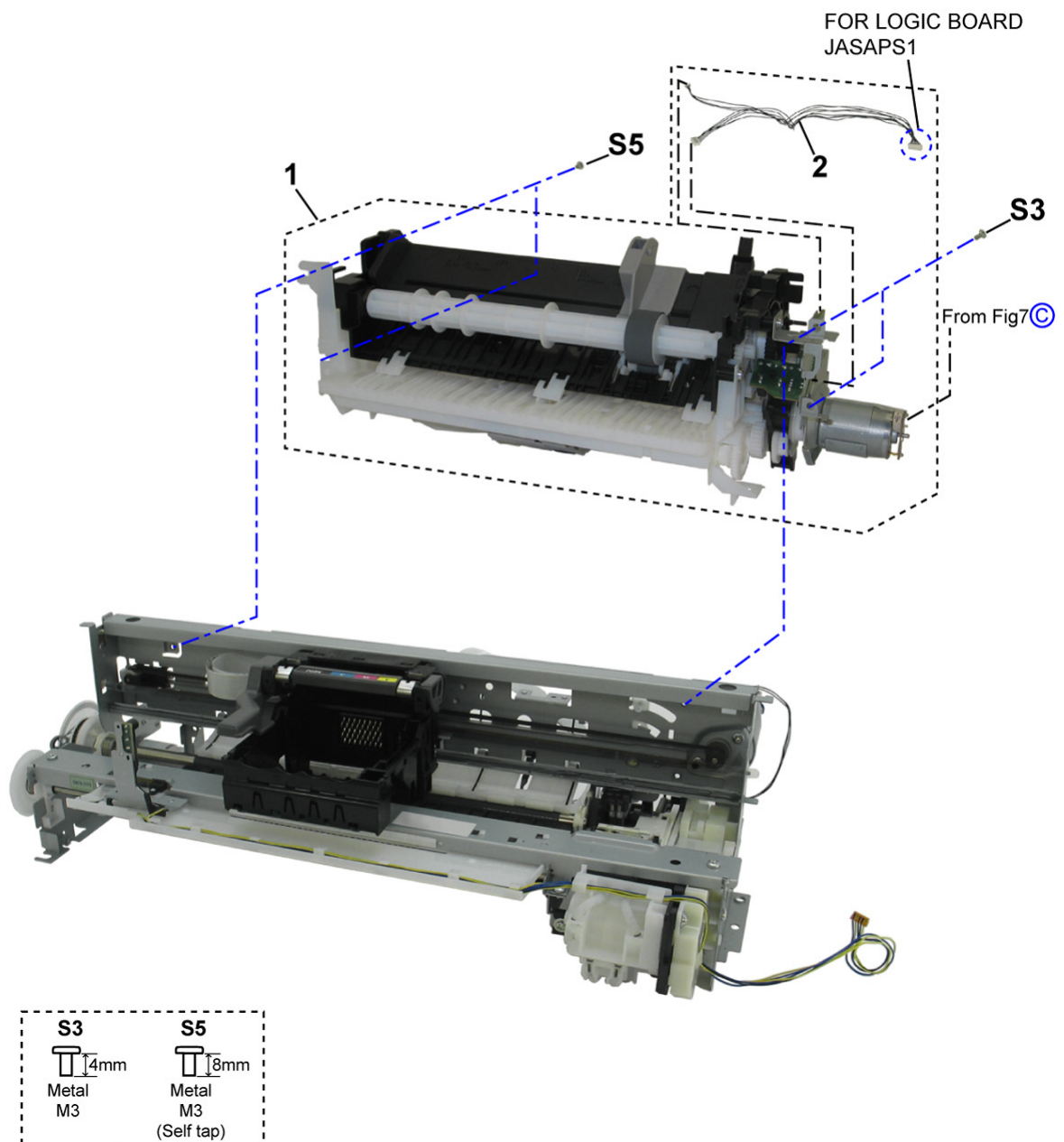


FIGURE & KEY No.		PART NUMBER	RANK	QTY	DESCRIPTION	REMARKS
6-	1	QM3-2647-000		1	SHEET FEED UNIT	
	2	QM3-2576-000		1	ASF-PG ENC HARNESS	



FIGURE 7 CARRIAGE UNIT & PURGE UNIT

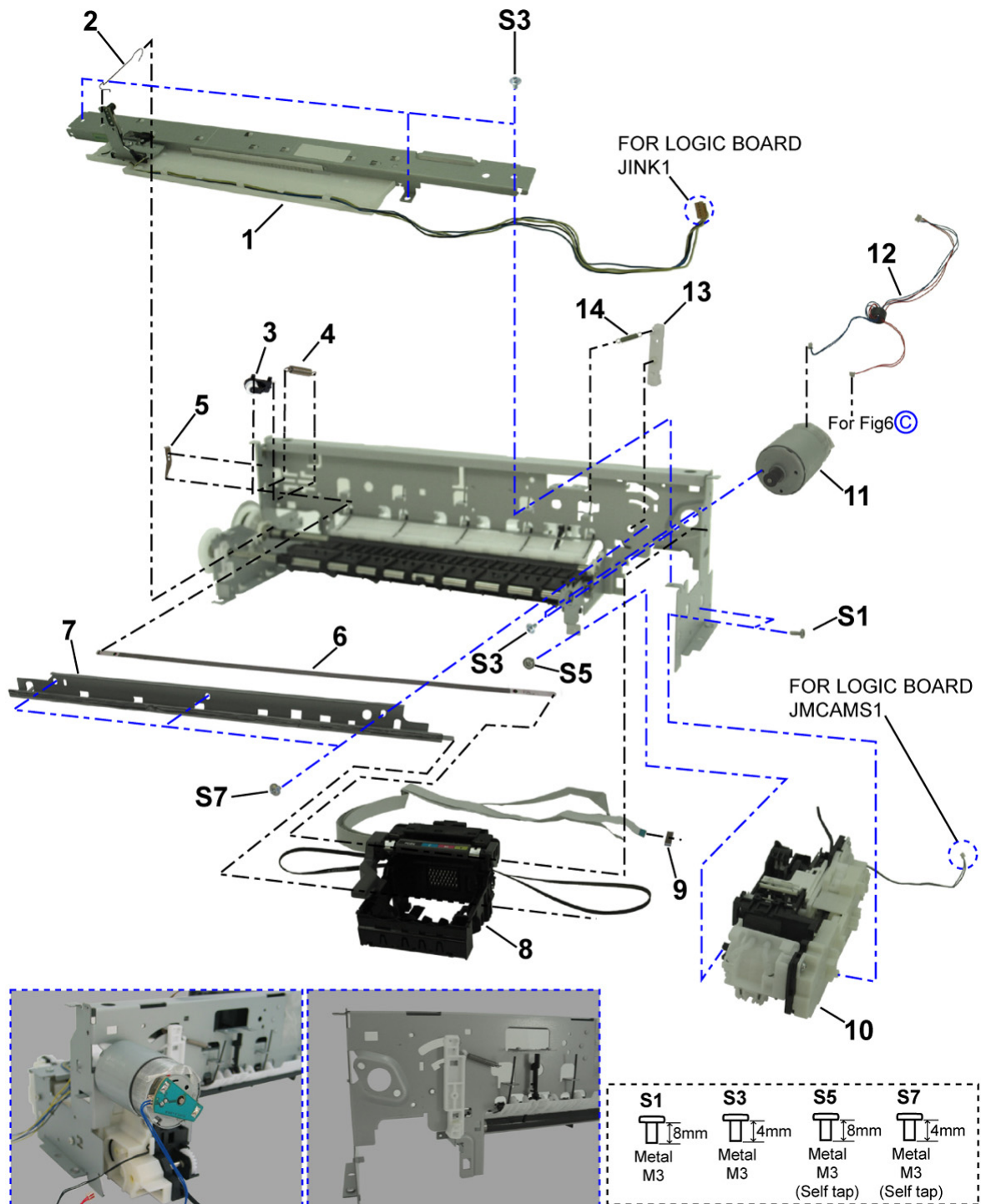
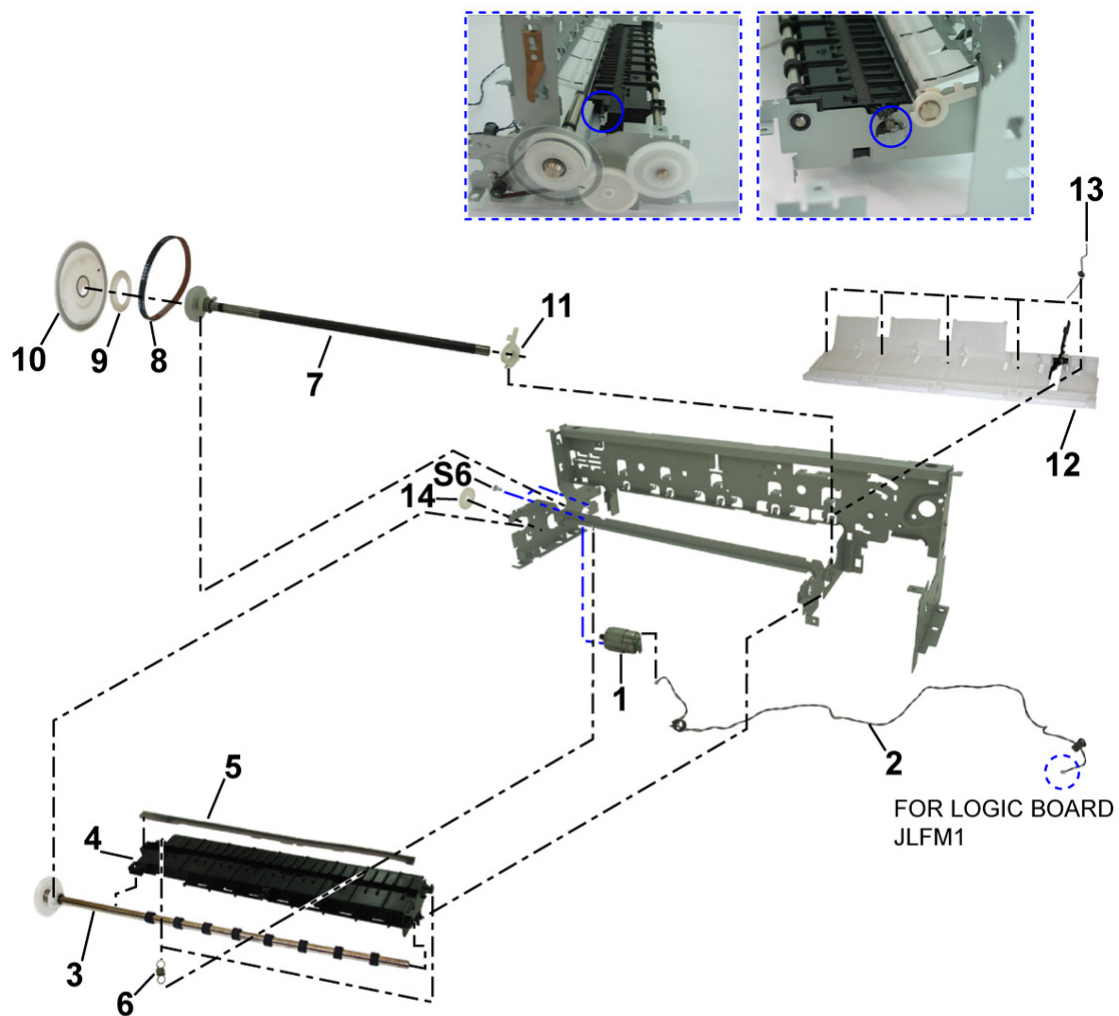
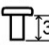


FIGURE & KEY No.		PART NUMBER	RANK	QTY	DESCRIPTION	REMARKS
7-	1	QM3-2653-000		1	SPUR BASE ASS'Y	
	2	QC1-9614-000		1	SPRING, EARTH	
	3	QL2-2209-000		1	IDLER PURRY ASS'Y	
	4	QC2-3234-000		1	SPRING, COIL	
	5	QC2-5688-000		1	SPRING, LEAF	
	6	QC2-5687-000		1	FILM, TIMING SLIT STRIP	
	7	QC2-5675-000		1	RAIL, CARRIAGE	
	8	QM3-2650-000		1	CARRIAGE UNIT	
	9	QK1-3926-000		1	CORE, RING	
	10	QM3-2651-000		1	PURGE UNIT	
	11	QK1-1500-000		1	MOTOR, CARRIAGE	
	12	QM3-2589-000		1	CR-PG MOTOR HARNESS	
	13	QC2-5691-000		1	LEVER, AP-PG ARM	
	14	QC2-5692-000		1	SPRING, AP-PG ARM	



FIGURE 8 PAPER FEED PART



**S6**  
 3mm  
 Metal  
 M2.6  
 (Self tap)

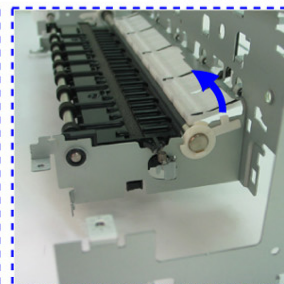
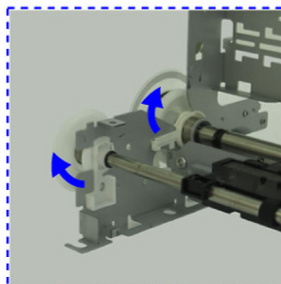
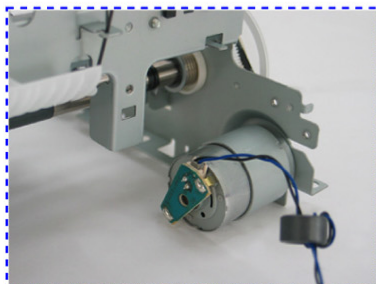


FIGURE & KEY No.		PART NUMBER	RANK	QTY	DESCRIPTION	REMARKS
8-	1	QK1-3849-000		1	MOTOR, PAPER FEED	
	2	QM3-2587-000		1	PAPER FEED MOTOR HARNESS ASS'Y	
	3	QL2-2205-000		1	EJECT ROLLER ASS'Y	
	4	QC2-5665-000		1	PLATEN	
	5	NPN		1	ABSORBER, INK	Included in Key No. 5-2.
	6	QC2-6103-000		2	SPRING, PLATEN	
	7	QL2-2206-000		1	PAPER FEED ROLLER ASS'Y	
	8	QC1-9598-000		1	BELT, PAPER FEED	
	9	QC1-9612-000		1	FLANGE, LF PULLEY	
	10	QC1-9597-000		1	FILM, TIMING SLIT DISK	
	11	QC2-5664-000		1	BUSHING, PAPER FEED ROLLER R	
	12	QM3-2649-000		1	PRESSURE ROLLER ASS'Y	
	13	QC1-9600-000		5	SPRING, TORSION	
	14	QC1-9613-000		1	GEAR, EJECT IDLER	



FIGURE 9 OPTION & CONSUMABLES





FIGURE & KEY No.		PART NUMBER	RANK	QTY	DESCRIPTION	REMARKS
9 -	1	NPN		1	BLACK INK TANK BCI-9BK	CONSUMABLES
		NPN		1	YELLOW INK TANK BCI7eY	CONSUMABLES
		NPN		1	MAGENTA INK TANK BCI-7eM	CONSUMABLES
		NPN		1	CYAN INK TANK BCI-7eC	CONSUMABLES
	2	NPN		1	BLACK INK TANK PGI-5BK	CONSUMABLES
		NPN		1	YELLOW INK TANK CLI-8Y	CONSUMABLES
		NPN		1	MAGENTA INK TANK CLI-8M	CONSUMABLES
		NPN		1	CYAN INK TANK CLI-8C	CONSUMABLES

## D. SCREW & WASHER LIST

[Contents](#)[NUMERICAL INDEX](#)

FIGURE & KEY No.		PART NUMBER	RANK	QTY	DESCRIPTION	REMARKS
S-	1	XB4-7300-805			SCREW, TP, BH3X8	
	2	XB4-7300-809			SCREW, TAP, BINDING HEAD, M3X8	
	3	XB1-2300-405			SCREW, MACH.BH, M3X4	
	4	XA9-1756-000			SCREW, TP, M3X8	
	5	XB4-7300-605			SCREW, BH M3X6	
	6	XB1-2260-305			SCREW, MACH. TRUSS HEAD, M2.6X3	
	7	XA1-1646-000			SCREW, TP, M3X4	



**This page intentionally left blank**

FIGURE 10 TOOL

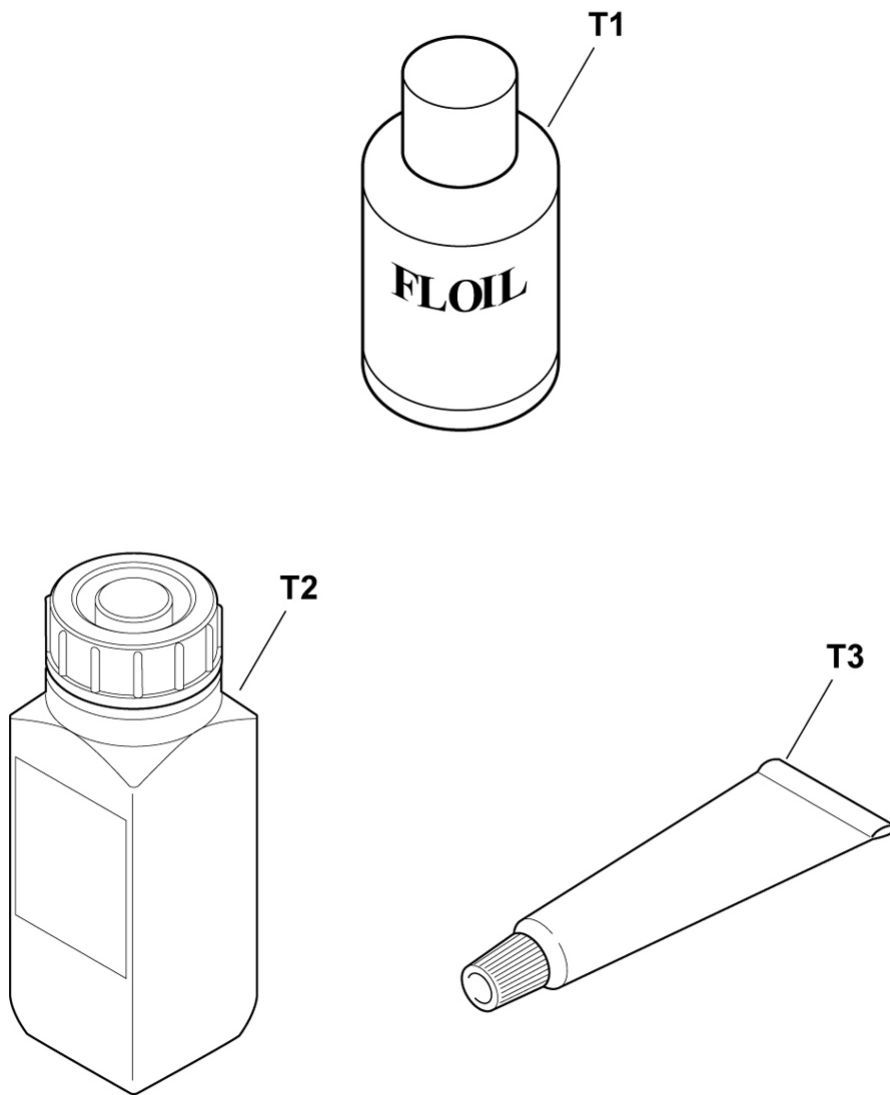


FIGURE & KEY No.		PART NUMBER	RANK	QTY	DESCRIPTION	REMARKS
T-	1	QY9-0057-000		1	LUBE, FLOIL KG107A, OIL	
	2	CK-8006-000		1	LUBE, ELECTRICITY GREASE IF-20	
	3	CK-0562-000		1	GREASE, MOLYKOTE PG-641	

# F. NUMERICAL INDEX

[Contents](#)
[ILLUSTRATION INDEX](#)

PART NUMBER	FIGURE & KEY No.	DESCRIPTION
CK-0562-000	T- 3	GREASE, MOLYKOTE PG-641
CK-8006-000	T- 2	LUBE, ELECTRICITY GREASE IF-20
QC1-9023-000	3- 1	EMBLEM
QC1-9024-000	3- 1	EMBLEM
QC1-9597-000	8- 10	FILM, TIMING SLIT DISK
QC1-9598-000	8- 8	BELT, PAPER FEED
QC1-9600-000	8- 13	SPRING, TORSION
QC1-9612-000	8- 9	FLANGE, LF PULLEY
QC1-9613-000	8- 14	GEAR, EJECT IDLER
QC1-9614-000	7- 2	SPRING, EARTH
QC2-3234-000	7- 4	SPRING, COIL
QC2-4900-000	3- 1	EMBLEM
QC2-5194-000	3- 3	SHEET, DOCUMENT PRESSURE
QC2-5614-000	5- 1	COVER, ABSORBER
QC2-5615-000	2- 25	COVER, REAR
QC2-5664-000	8- 11	BUSHING, PAPER FEED ROLLER R
QC2-5665-000	8- 4	PLATEN
QC2-5675-000	7- 7	RAIL, CARRIAGE
QC2-5687-000	7- 6	FILM, TIMING SLIT STRIP
QC2-5688-000	7- 5	SPRING, LEAF
QC2-5689-000	4- 3	GUIDE, FFC
QC2-5691-000	7- 13	LEVER, AP-PG ARM
QC2-5692-000	7- 14	SPRING, AP-PG ARM
QC2-5716-000	2- 23	TRAY, OUTPUT
QC2-5718-000	2- 21	MAIN CASE UNIT
QC2-5725-000	2- 2	COVER, FRONT L
QC2-5726-000	2- 15	COVER, FRONT R
QC2-5728-000	2- 4	COVER, SIDE DECORATION L
QC2-5729-000	2- 14	COVER, SIDE DECORATION R
QC2-5753-000	2- 7	COVER, PANEL
QC2-5755-000	2- 6	FREME, REAR MIDDLE
QC2-5756-000	2- 5	COVER, REAR TOP
QC2-5759-000	2- 8	GUIDE, LIGHT
QC2-6075-000	2- 24	COVER, ASF UNDER
QC2-6103-000	8- 6	SPRING, PLATEN
QC2-6110-000	2- 16	SHEET, SCANNER
QC2-6352-000	2- 7	COVER, PANEL
QC2-6353-000	2- 7	COVER, PANEL
QC2-6354-000	2- 7	COVER, PANEL
QC2-6356-000	2- 7	COVER, PANEL
QC2-6357-000	1- 3	STICKER, PANEL
QH2-2716-000	1- 2	CORD, POWER
QH2-2719-000	1- 2	CORD, POWER
QK1-0776-000	1- 2	CORD, POWER
QK1-1500-000	7- 11	MOTOR, CARRIAGE
QK1-2017-000	1- 2	CORD, POWER
QK1-3048-000	1- 2	CORD, POWER
QK1-3520-000	4- 1	AC ADAPTER: 100V-240V 50/60HZ
QK1-3760-000	2- 19	CORE
QK1-3761-000	1- 2	CORD, POWER
QK1-3807-000	4- 4	FFC, MAIN CARD
QK1-3810-000	2- 20	FFC, PANEL
QK1-3849-000	8- 1	MOTOR, PAPER FEED
QK1-3926-000	2- 18	CORE, RING
	7- 9	
QL2-2205-000	8- 3	EJECT ROLLER ASS'Y
QL2-2206-000	8- 7	PAPER FEED ROLLER ASS'Y
QL2-2209-000	7- 3	IDLER PURRY ASS'Y
QM3-2571-000	4- 9	PE SENSOR BOARD ASS'Y
QM3-2572-000	4- 10	TIMING SENSOR ASS'Y

PART NUMBER	FIGURE & KEY No.	DESCRIPTION
QM3-2574-000	4- 5	DCD BOARD ASS'Y
QM3-2576-000	6- 2	ASF-PG ENC HARNESS
QM3-2577-000	4- 11	LF PE SENSOR HARNESS
QM3-2580-000	4- 6	DCD HARNESS ASS'Y
QM3-2583-000	4- 2	DC HARNESS ASS'Y
QM3-2587-000	8- 2	PAPER FEED MOTOR HARNESS ASS'Y
QM3-2589-000	7- 12	CR-PG MOTOR HARNESS
QM3-2593-000	4- 12	SCANNER HARNESS ASS'Y
QM3-2599-000	4- 8	LOGIC BOARD
QM3-2603-000	4- 7	CARD BOARD ASS'Y
QM3-2633-000	5- 3	BOTTOM CASE UNIT
QM3-2634-000	2- 13	SIDE COVER UNIT R
QM3-2635-000	2- 3	SIDE COVER UNIT L
QM3-2636-000	2- 1	ASF TRAY UNIT
QM3-2637-000	2- 22	FRONT TRAY UNIT
QM3-2638-000	2- 17	SCANNER OPEN SW ASS'Y
QM3-2639-000	2- 12	OPERATION PANEL UNIT
QM3-2640-000	2- 11	LCD UNIT
QM3-2642-000	3- 2	DOCUMENT PRESSURE PLATE ASS'Y
QM3-2643-000	3- 4	SCANNER UNIT
QM3-2647-000	6- 1	SHEET FEED UNIT
QM3-2649-000	8- 12	PRESSURE ROLLER ASS'Y
QM3-2650-000	7- 8	CARRIAGE UNIT
QM3-2651-000	7- 10	PURGE UNIT
QM3-2653-000	7- 1	SPUR BASE ASS'Y
QM3-4304-000	2- 9	LCD HINGE UNIT L
QM3-4305-000	2- 10	LCD HINGE UNIT R
QY5-0192-000	5- 2	ABSORBER KIT
QY6-0070-000	1- 1	PRINTER HEAD
QY9-0057-000	T- 1	LUBE, FLOIL KG107A, OIL
VS1-7165-004	4- 13	CONNECTOR, CABLE
WT3-5156-000	1- 2	CORD, POWER
WT3-5160-000	1- 2	CORD, POWER
XA9-1756-000	S- 4	SCREW, TP, M3X8
XA9-1646-000	S- 7	SCREW, TP M3X4
XB1-2260-305	S- 6	SCREW, MACH. TRUSS HEAD, M2.6X3
XB1-2300-405	S- 3	SCREW, MACH.BH, M3X4
XB4-7300-605	S- 5	SCREW, BH M3X6
XB4-7300-805	S- 1	SCREW, TP, BH3X8
XB4-7300-809	S- 2	SCREW, TAP, BINDING HEAD, M3X8