

MP630 MP638

PARTS CATALOG

REVISION 0



2920B001AA MP630 / 100V(JP)
2920B003AA MP630 / 120V(CA)
2920B006AA MP630 / 220V-240V(EUM)
2920B007AA MP630 / 220V-240V(EMB)
2920B008AA MP630 / 220V-240V(GB)
2920B011AA MP630 / 220V-240V(AU)
2920B012AA MP638 / 220V-240V(ASA)
2920B013AA MP638 / 220V-240V(HK)
2920B014AA MP638 / 220V-240V(CN)

JUL. 2008

QY8-31DE-000

COPYRIGHT © 2008 CANON INC. CANON MP638/MP638 0708 N 0.00-0

Application

This manual has been issued by Canon Inc. for qualified person to learn technical theory, installation, maintenance, and repair of products. This manual covers all localities where the products are sold. For this reason, there may be information in this manual that does not apply to your locality.

Corrections

This manual could include technical inaccuracies or typographical errors due to improvements or changes in the products. When changes occur in applicable products or in the content of this manual, Canon will release technical information as the need arises. In the event of major changes in the contents of this manual over a long or short period. Canon will issue a new editions of this manual. The following paragraph does not apply to any countries where such provisions are inconsistent with local law.

Trademarks

The product names and company names described in this manual are the registered trademarks of the individual companies.

Copyright

This manual is copyrighted with all rights reserved. Under the copyright laws, this manual may not be copied, reproduced or translated into another language, in whole or in part, without the written consent of Canon Inc.

Copyright © 2008 by Canon Inc.

CANON INC.

Inkjet Device Quality Assurance Div. 2

451, Tsukagoshi, 3-chome, Saiwai-ku, Kawasaki-shi, Kanagawa 212-8530, Japan

This manual was created under Microsoft® Windows® 2000.

Parts layout pictures were edited using Adobe® Photoshop® 7.0. KEY No. were created using Adobe® Illustrator®10.

HTML files were created using Microsoft® FrontPage® 2000.

ABOUT THIS MANUAL

A. ILLUSTRATION INDEX

For illustration index, the parts layout illustrations in this parts catalog are listed in abbreviated form in order of illustration number to identify the pages they appear on. To find an illustration of a part, see the ILLUSTRATION INDEX.

B. PARTS LAYOUT & PARTS LIST

Parts layout illustration

a) Parts search

Find a part from the parts layout illustration and find its key number from the parts list to identify the part number and name. For screws, nuts, washers, lock washers, pins, spacers, see SCREWS & WASHERS LIST.

Note: If parts have the same or similar shape but different specifications, their key number is assigned to several part numbers and names in the parts list.

b) Parts replacement procedure

To replace parts, the parts layout illustrations have figure numbers according to the disassembly procedure of the product. The parts that require careful work are shown the illustration.

Parts list

a) FIGURE & KEY No.

The FIGURE & KEY No. column corresponds to the key numbers assigned to the parts in the parts layout illustration.

b) PART NUMBER

The PART NUMBER column gives the part numbers corresponding to the key numbers. To order a part, indicate the part number clearly.

Note: Parts marked NPN are not service parts.

c) RANK

The service parts with N in the RANK column are order parts.

d) QTY

The QTY column gives the number of parts in the corresponding components layout illustration.

e) DESCRIPTION

The DESCRIPTION column gives the part names in English.

To order a part, indicate the part name, too.

C. OPTIONS & CONSUMABLES

These are illustrations and a list of units that can be used as optional consumable equipments.

D. SCREWS & WASHERS LIST

This is a list of screws, nuts, washers, lock washers, pins, and spacers.

The QTY column does not give the number of parts used.

E. TOOL LIST

This is a list of tools used for servicing products.

F. NUMERICAL INDEX

All the parts listed in this parts catalog are arranged in order of part number. You can identify part locations and names from the NUMERICAL INDEX.

Contents

A. ILLUSTRATION INDEX

B. PARTS LAYOUT & PARTS LIST

FIGURE 1 PACKING CONTENTS & PRINT HEAD

FIGURE 2 AC ADAPTER

FIGURE 3 EXTERNAL COVERS & SCANNER UNIT

FIGURE 4 DOCUMENT PRESSURE PLATE UNIT

FIGURE 5 OPERATION PANEL UNIT

FIGURE 6 MAIN CASE UNIT & FRONT DOOR UNIT

FIGURE 7 BOTTOM CASE & INK ABSORBER

FIGURE 8 LOGIC BOARD ASS'Y & PE SENSOR BOARD ASS'Y

FIGURE 9 SHEET FEED UNIT

FIGURE 10 CARRIAGE UNIT & PRESSURE ROLLER UNIT

FIGURE 11 PLATEN UNIT & SPUR UNIT

FIGURE 12 PURGE DRIVE SYSTEM UNIT & SWITCH SYSTEM UNIT

REFERENCE PRINTER UNIT

C. OPTION & CONSUMABLES

D. SCREW & WASHER LIST

E. TOOL

F. NUMERICAL INDEX

A. ILLUSTRATION INDEX

Contents

NUMERICAL INDEX

FIGURE 1 PACKING CONTENTS & PRINT HEAD



FIGURE 2 AC ADAPTER



FIGURE 3 EXTERNAL COVERS & SCANNER UNIT

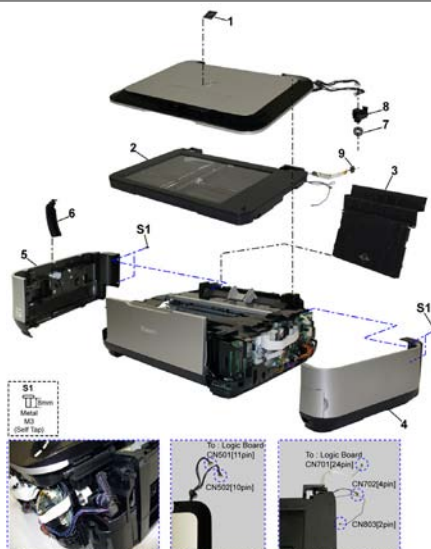


FIGURE 4 DOCUMENT PRESSURE PLATE UNIT

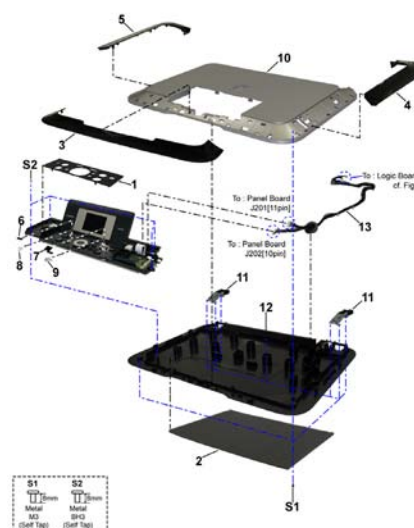


FIGURE 5 OPERATION PANEL UNIT

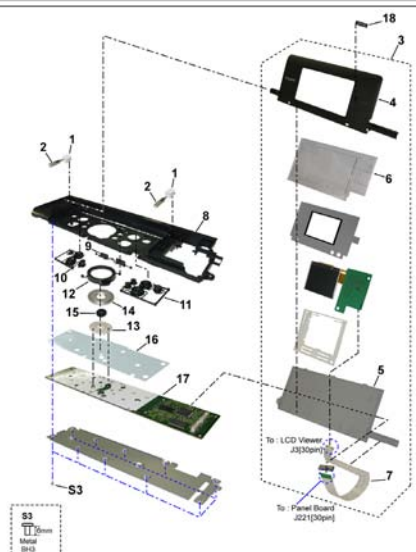


FIGURE 6 MAIN CASE UNIT & FRONT DOOR UNIT

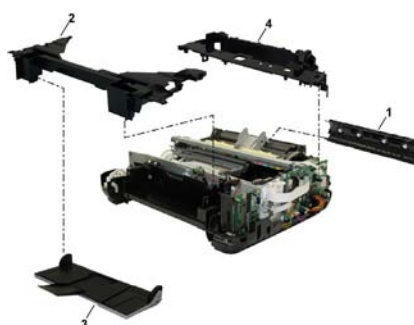


FIGURE 7 BOTTOM CASE & INK ABSORBER

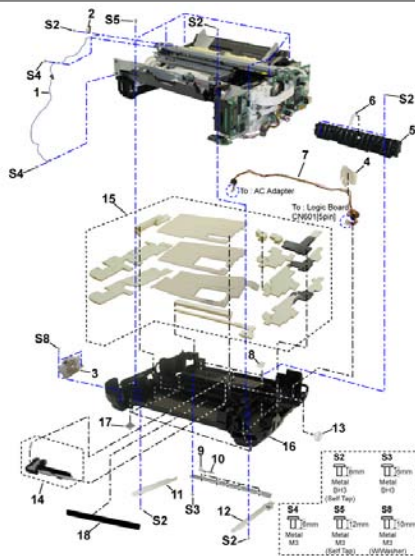


FIGURE 8 LOGIC BOARD ASS'Y & PE SENSOR BOARD ASS'Y

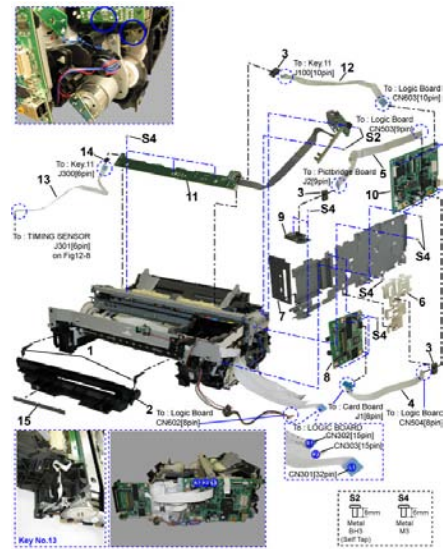


FIGURE 9 SHEET FEED UNIT

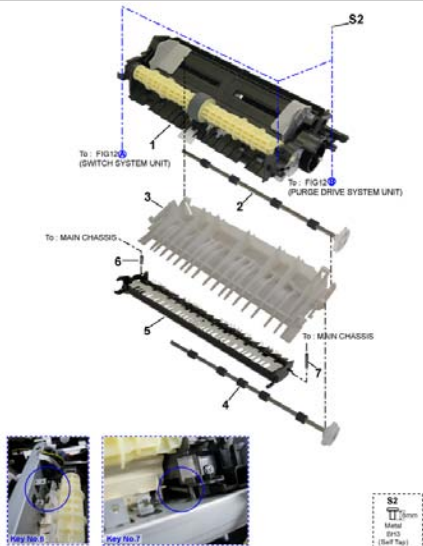


FIGURE 10 CARRIAGE UNIT & PRESSURE ROLLER UNIT

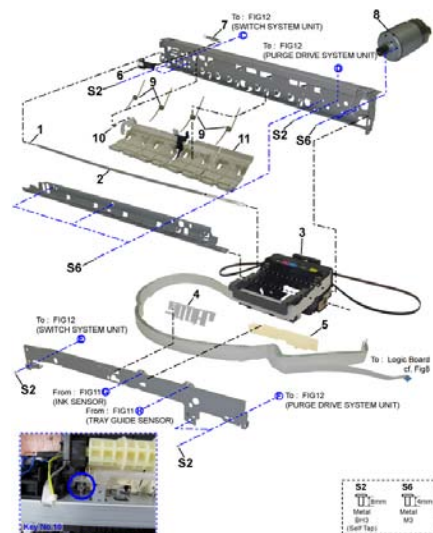


FIGURE 11 PLATEN UNIT & SPUR UNIT

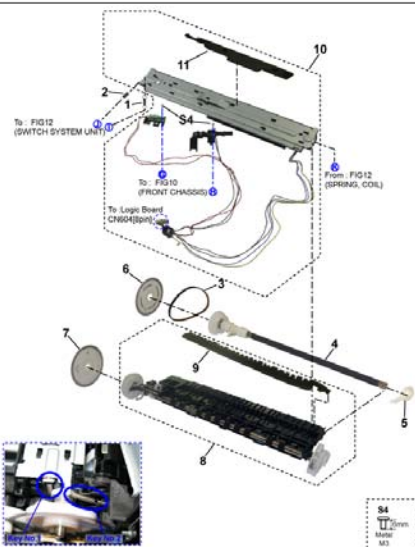
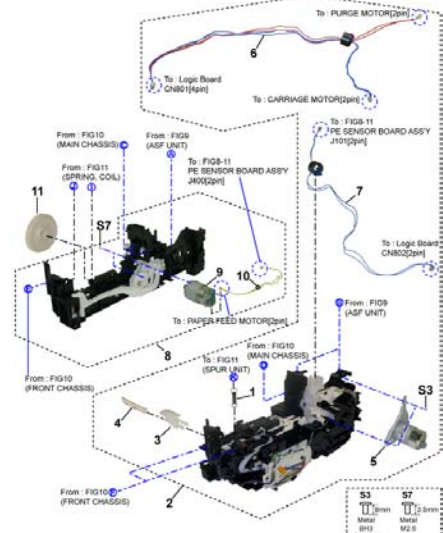


FIGURE 12 PURGE DRIVE SYSTEM UNIT & SWITCH SYSTEM UNIT



REFERENCE PRINTER UNIT

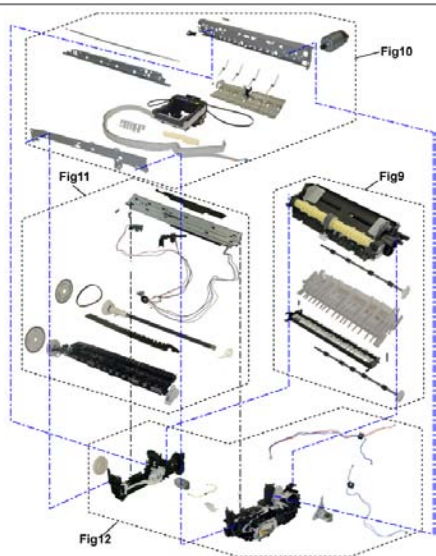


FIGURE 13 OPTION & CONSUMABLES



FIGURE 14 TOOL



B. PARTS LAYOUT & PARTS LIST

[Contents](#)

[ILLUSTRATION INDEX](#)

[NUMERICAL INDEX](#)



FIGURE 1 PACKING CONTENTS & PRINT HEAD



FIGURE & KEY No.		PART NUMBER	RANK	QTY	DESCRIPTION	REMARKS
1-	1	QM3-3716-000		1	CASSETTE UNIT	
	2	QY6-0072-000		1	PRINT HEAD	
	3	QH2-2716-000		1	CORD, POWER	220V-240V(EUM, EMB, ASA, MY)
	3	QH2-2719-000		1	CORD, POWER	100V-120V
	3	QK1-0776-000		1	CORD, POWER	220V-240V(AU)
	3	QK1-3048-000		1	CORD, POWER	120V-240V(LAM, CHN)
	3	QK1-3761-000		1	CORD, POWER	100V(JP)
	3	WT3-5156-000		1	CORD, POWER	220V-240V(GB, HK)
	4	QL2-2531-000		1	CDR TRAY ASS'Y	W/ CDR PRINTING
	5	QA4-1117-000		1	TRAY, CD SUB	W/ CDR PRINTING
	6	QC2-9120-000		1	SHEET, PANEL	CA

[Contents](#)[ILLUSTRATION INDEX](#)[NUMERICAL INDEX](#)

FIGURE 2 AC ADAPTER



FIGURE & KEY No.		PART NUMBER	RANK	QTY	DESCRIPTION	REMARKS
2-	1	QK1-4964-000		1	AC ADAPTER: 100V-240V 50/60HZ	



[Contents](#)[ILLUSTRATION INDEX](#)[NUMERICAL INDEX](#)

FIGURE 3 EXTERNAL COVERS & SCANNER UNIT

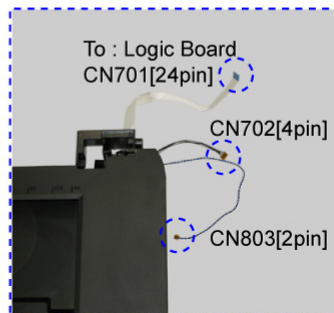
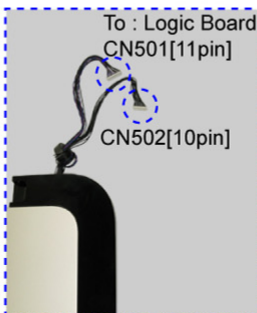
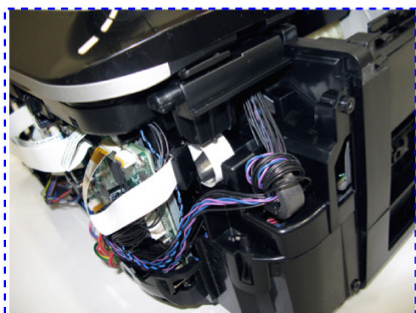
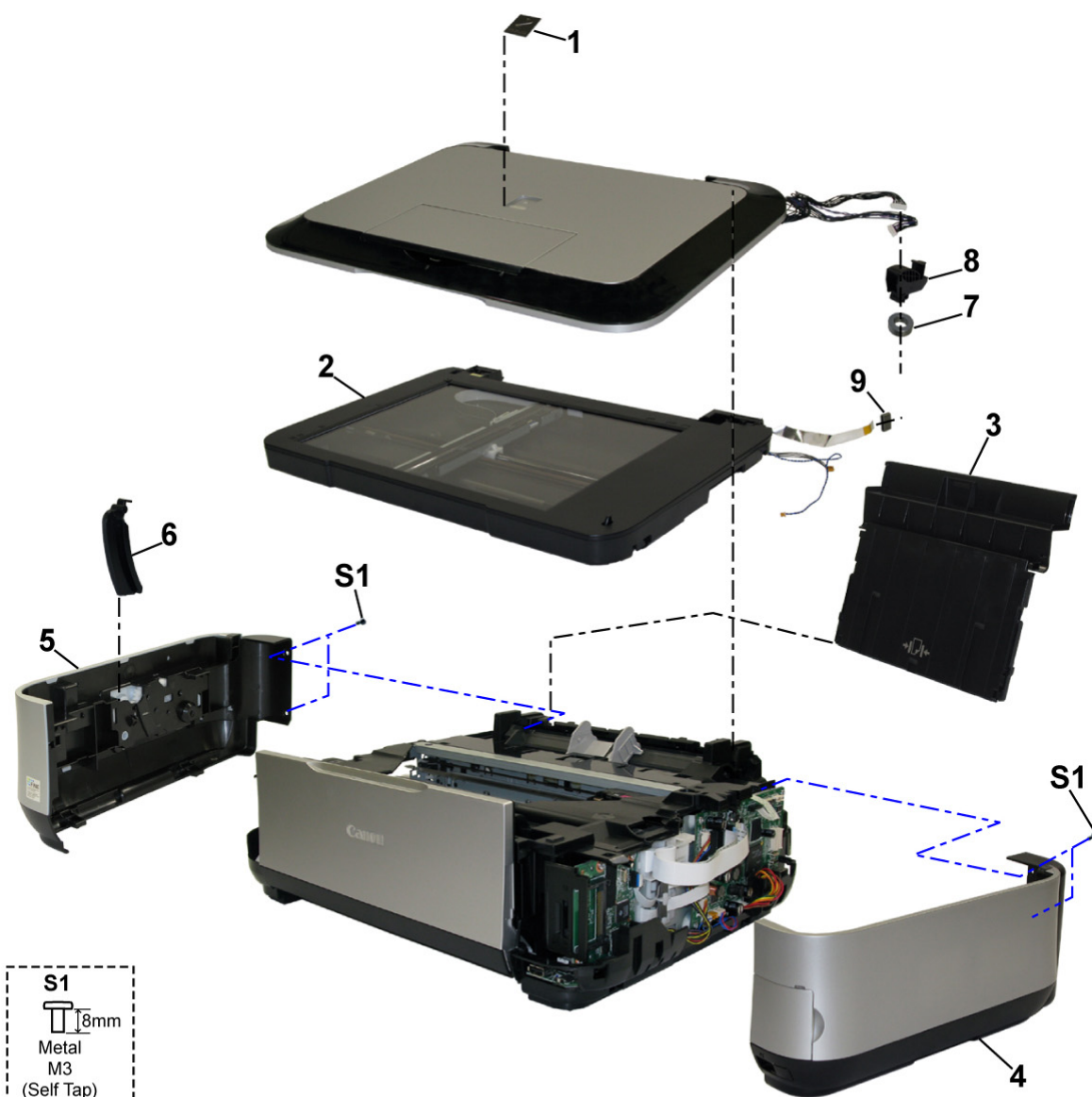


FIGURE & KEY No.		PART NUMBER	RANK	QTY	DESCRIPTION	REMARKS
3-	1	QC1-9023-000		1	EMBLEM	FOR JAPAN
	1	QC1-9024-000		1	EMBLEM	FOR OTHER REGIONS
	2	QM3-3719-000		1	SCANNER UNIT	
	3	QM3-3715-000		1	PAPER SUPPORT UNIT	
	4	QM3-3713-000		1	SIDE COVER R UNIT	
	5	QM3-3714-000		1	SIDE COVER L UNIT	
	6	QC2-7943-000		1	ARM, SCANNER SUPPORT	
	7	WE8-6615-000		1	CORE, RING	
	8	QC2-7939-000		1	GUIDE, HARNESS	
	9	WE8-6617-000		1	CORE, RING	



FIGURE 4 DOCUMENT PRESSURE PLATE UNIT

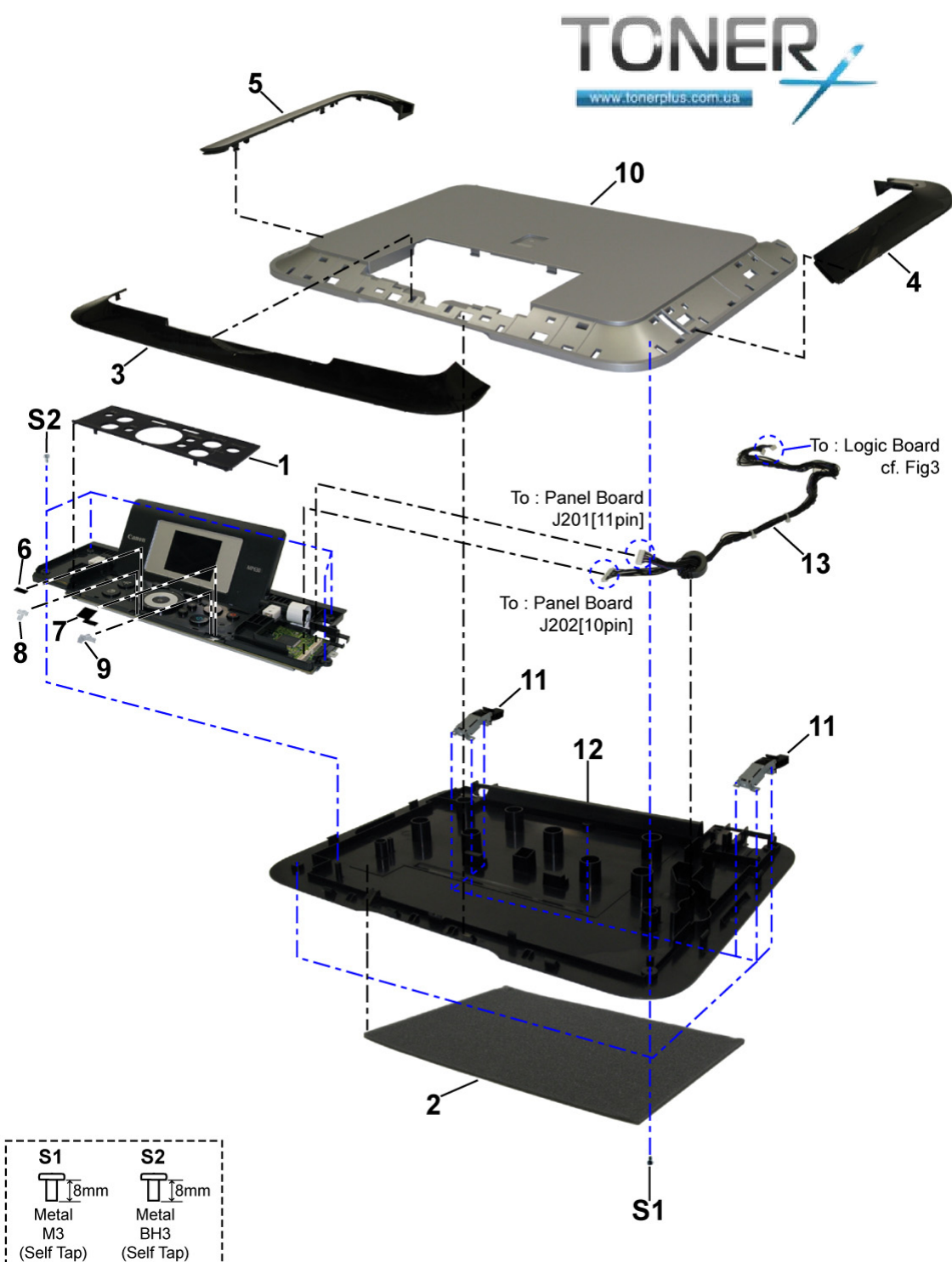


FIGURE & KEY No.		PART NUMBER	RANK	QTY	DESCRIPTION	REMARKS
4-	1	QC2-7938-000		1	COVER, PANEL	CA, AU, ASA
	1	QC2-8550-000		1	COVER, PANEL	JP
	1	QC2-8551-000		1	COVER, PANEL	EUM, EMB, GB
	1	QC2-8552-000		1	COVER, PANEL	HK
	1	QC2-9118-000		1	COVER, PANEL	CN
	2	QC2-9278-000		1	SHEET, DOCUMENT PRESSURE	
	3	QC2-8014-000		1	COVER, PANEL F	
	4	QC2-8013-000		1	COVER, PANEL R	
	5	QC2-8012-000		1	COVER, PANEL L	
	6	QC3-0096-000		1	SHEET, POWER LED WINDOW	
	7	QC3-0097-000		1	SHEET, ERROR LED WINDOW	
	8	QC2-8028-000		1	WINDOW, POWER LED	
	9	QC2-8029-000		1	WINDOW, ERROR LED	
	10	QC2-8010-000		1	COVER, DOCUMENT TOP	
	11	QM3-3725-000		2	HINGE UNIT	
	12	QC2-8011-000		1	COVER, DOCUMENT BOTTOM	
	13	QM3-3864-000		1	PANEL HARNESS ASS'Y	

FIGURE 5 OPERATION PANEL UNIT

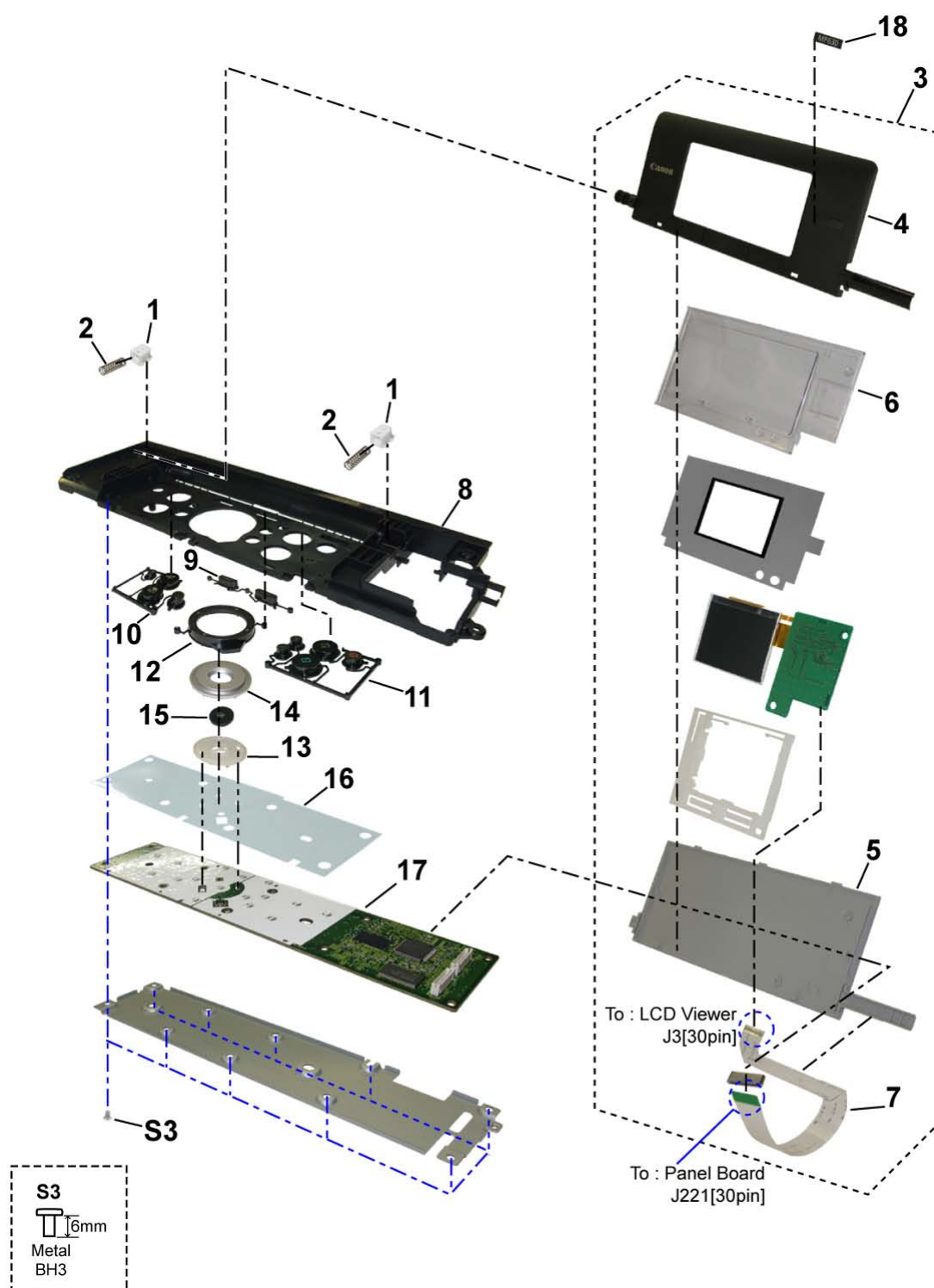


FIGURE & KEY No.		PART NUMBER	RANK	QTY	DESCRIPTION	REMARKS
5-	1	QC2-4867-000		2	HINGE, LCD	
	2	QC2-4868-000		2	SPRING, HINGE	
	3	QM3-3737-000		1	LCD VIEWER UNIT	
	4	QC2-8035-000		1	COVER, LCD FRONT	
	5	QC2-8036-000		1	COVER, LCD TOP	
	6	QC2-8503-000		1	WINDOW, LCD	
	7	QL2-2613-000		1	LCD CABLE ASS'Y	
	8	QC2-8020-000		1	FRAME, PANEL	
	9	QC2-8021-000		1	KEY, FUNCTION	
	10	QC2-8022-000		1	KEY, OPERATION L	
	11	QC2-8023-000		1	KEY, OPERATION R	
	12	QC2-8534-000		1	KEY, RING	
	13	QC2-8026-000		1	BASE, JOG WHEEL	
	14	QC2-8025-000		1	JOG WHEEL	
	15	QC2-8024-000		1	KEY, OK	
	16	QC2-8033-000		1	COVER, PANEL BOARD	
	17	QM3-3738-000		1	PANEL BOARD ASS'Y	
	18	QC2-9121-000		1	LABEL, PRODUCT NAME	FOR MP630
	18	QC2-9122-000		1	LABEL, PRODUCT NAME	FOR MP638



FIGURE 6 MAIN CASE UNIT & FRONT DOOR UNIT

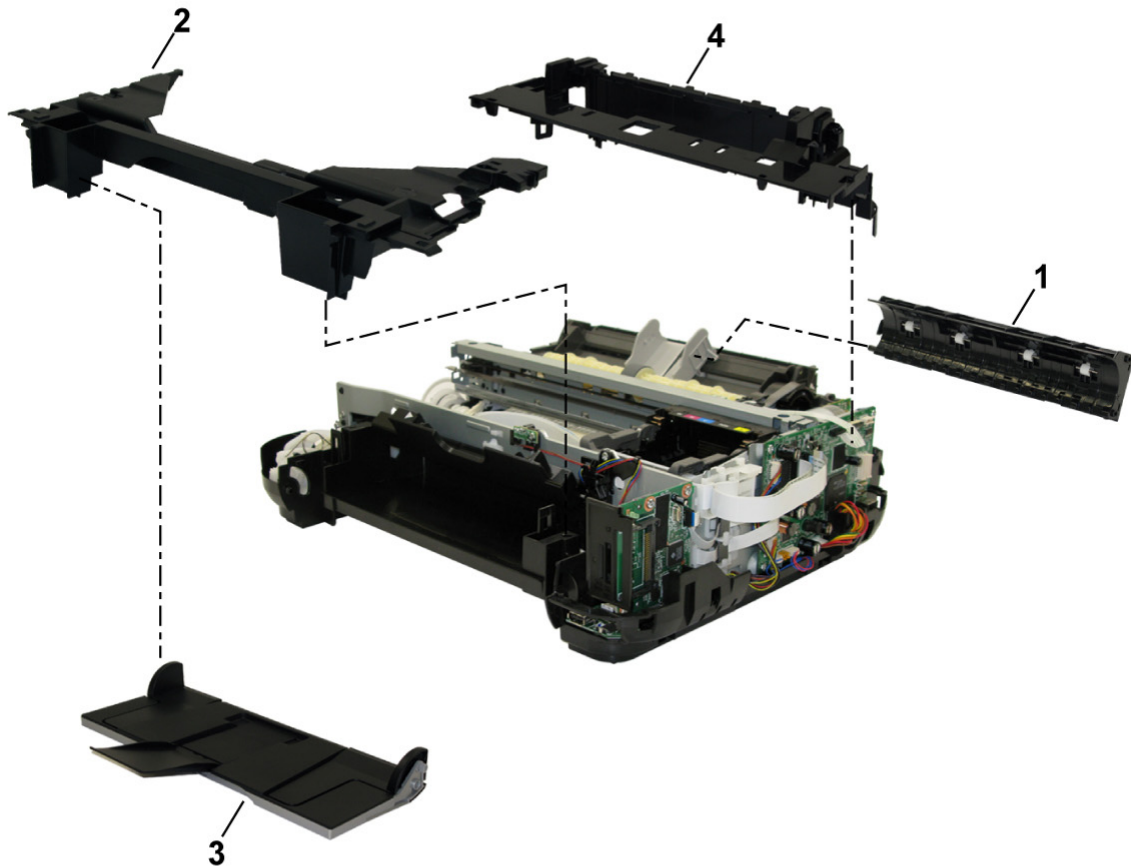


FIGURE & KEY No.		PART NUMBER	RANK	QTY	DESCRIPTION	REMARKS
6-	1	QM3-4762-000		1	REAR GUIDE UNIT	
	2	QM3-3710-000		1	MAIN CASE UNIT	
	3	QM3-3712-000		1	FRONT DOOR UNIT	
	4	QC2-8508-000		1	CASE, SUB	

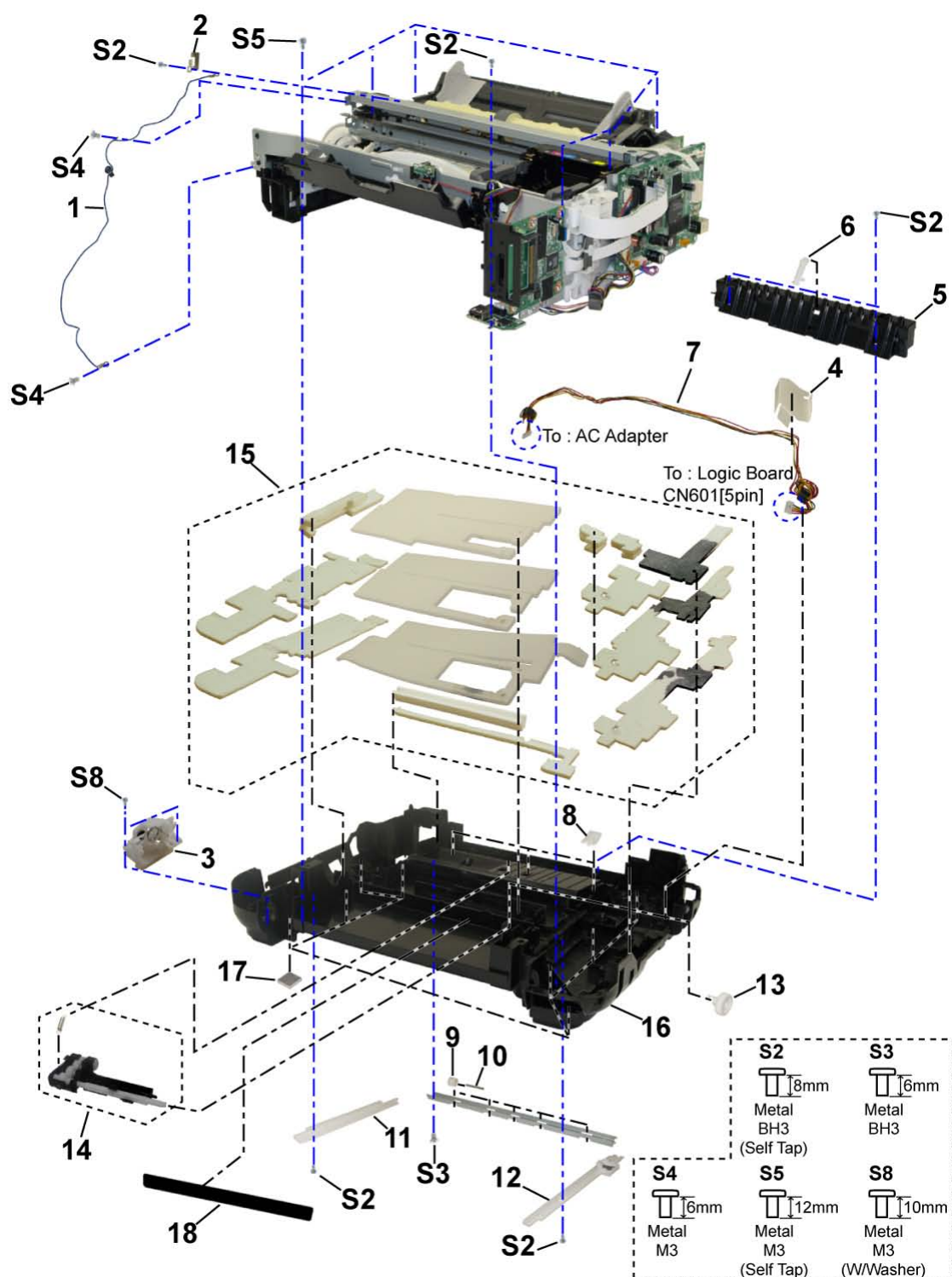
**FIGURE 7 BOTTOM CASE & INK ABSORBER**

FIGURE & KEY No.		PART NUMBER	RANK	QTY	DESCRIPTION	REMARKS
7-	1	QM3-3811-000		1	GND HARNESS ASS'Y	
	2	QC2-9216-000		1	SPRING, LEAF	
	3	QM3-3739-000		1	FRONT DOOR LINK UNIT	
	4	QC2-9282-000		1	COVER, DC HARNESS ASS'Y	
	5	QC2-7534-000		1	PAPER SEPARATION SLOPE	
	6	QC2-7533-000		1	PAPER SEPARATION KNURL	
	7	QM3-3884-000		1	DC HARNESS ASS'Y	
	8	QC2-7716-000		3	FLAPPER, DUPLEX PAPER FEED	
	9	QC2-7708-000		5	ROLLER, CASSETTE FEED PRESSURE	
	10	QC2-7709-000		5	SPRING, COIL	
	11	QC2-7529-000		1	CASSETTE RAIL L	
	12	QM3-3640-000		1	CASSETTE RAIL R UNIT	
	13	QC2-7654-000		1	GEAR, PICK UP SHAFT	
	14	QM3-3644-000		1	PICK UP ARM UNIT	
	15	QY5-0235-000		1	ABSORBER KIT	
	16	QC2-7990-000		1	CASE, BOTTOM	
	17	QC1-6457-000		8	FOOT, RUBBER	
	18	QC2-9287-000		1	SHEET, ANTISTATIC	



FIGURE 8 LOGIC BOARD ASS'Y & PE SENSOR BOARD ASS'Y

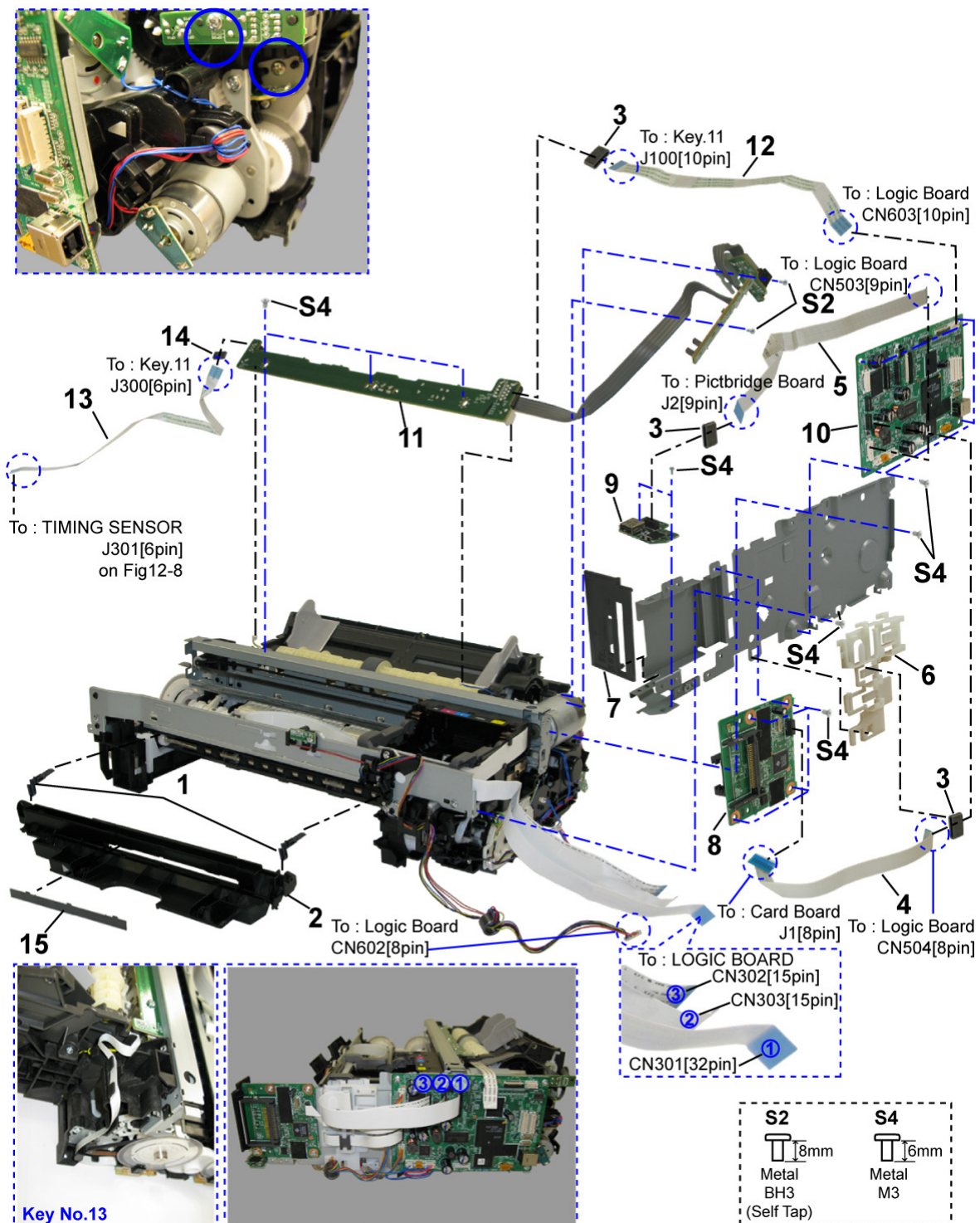


FIGURE & KEY No.		PART NUMBER	RANK	QTY	DESCRIPTION	REMARKS
8-	1	QC2-7678-000		2	ARM, RELEASE	
	2	QM3-3730-000		1	INNER COVER UNIT	
	3	WE8-6617-000		3	CORE, RING	
	4	QK1-4512-000		1	CABLE, CARD SLOT	
	5	QK1-4501-000		1	CABLE, PICTBRIDGE	
	6	QC2-8523-000		1	HOLDER, CORE	
	7	QC2-7976-000		1	PANEL, CARD SLOT	
	8	QM3-5049-000		1	CARD BOARD ASS'Y	
	9	QM3-5050-000		1	PICTBRIDGE BOARD ASS'Y	
	10	QM3-5048-000		1	LOGIC BOARD ASS'Y	
	11	QM3-4413-000		1	PE SENSOR BOARD ASS'Y	
	12	QK1-4984-000		1	CABLE, PE SENSOR	
	13	QK1-4990-000		1	CABLE, LF ENCODER	
	14	WE8-5781-000		1	CORE, RING	
	15	QC2-7490-000		1	COVER, GAP	W/O CDR PRINTING



FIGURE 9 SHEET FEED UNIT

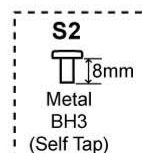
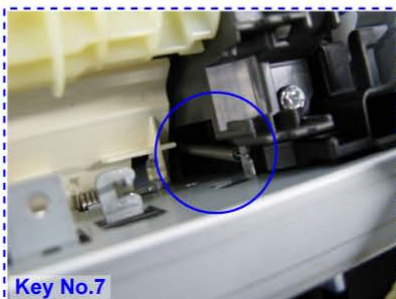
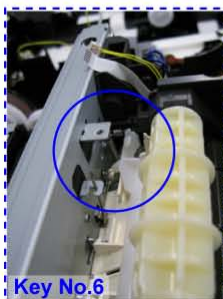
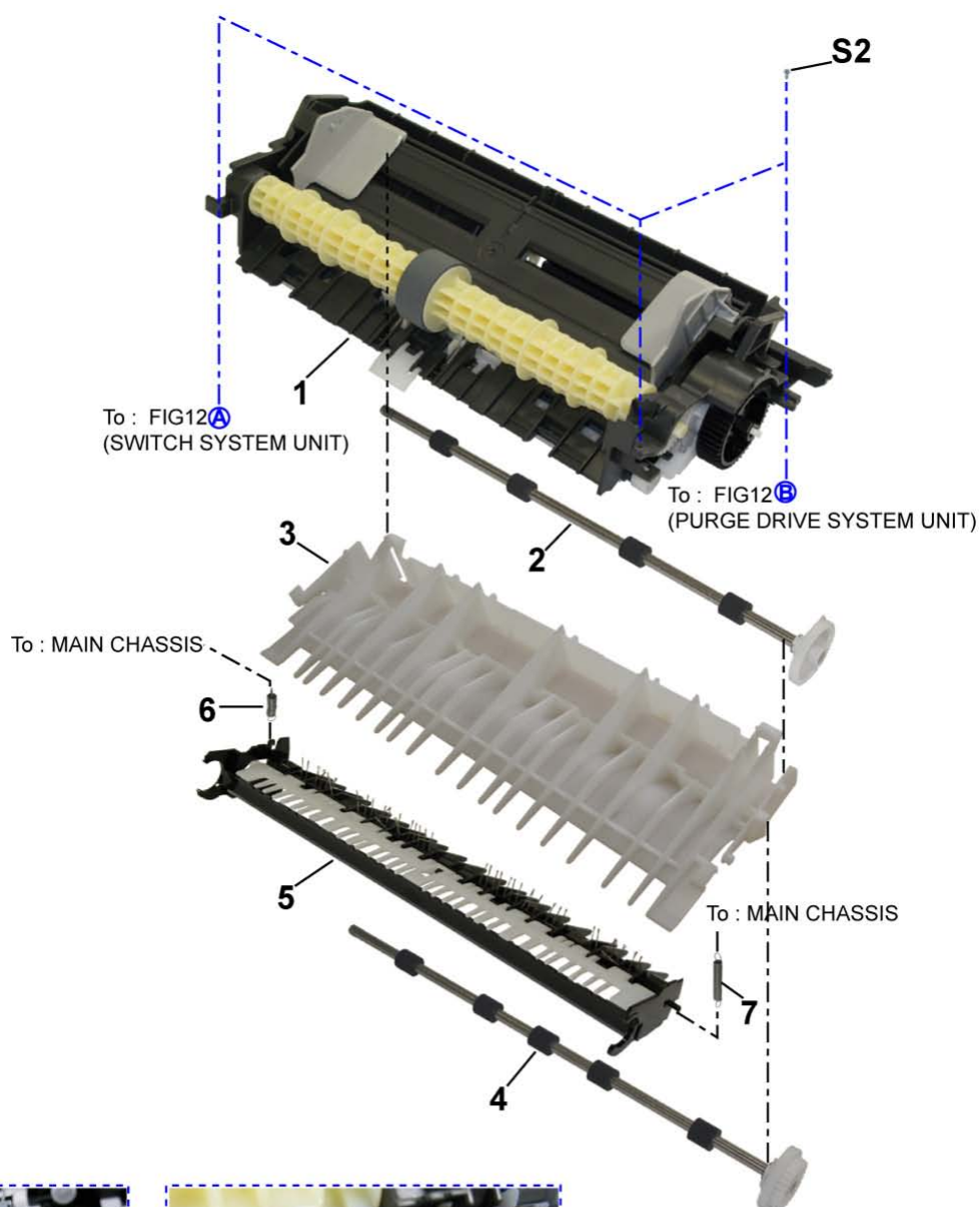


FIGURE & KEY No.		PART NUMBER	RANK	QTY	DESCRIPTION	REMARKS
9-	1	QM3-3733-000		1	ASF UNIT	
	2	QL2-2533-000		1	CASSETTE FEED ROLLER UNIT	
	3	QM3-3643-000		1	CASSETTE FEED GUIDE UNIT	
	4	QL2-2535-000		1	DUPLEX PAPER FEED ROLLER UNIT	
	5	QM3-4757-000		1	PAPER GUIDE UNIT	
	6	QC2-7657-000		1	SPRING, COIL	
	7	QC2-7743-000		1	SPRING, COIL	

[Contents](#)[ILLUSTRATION INDEX](#)[NUMERICAL INDEX](#)

FIGURE 10 CARRIAGE UNIT & PRESSURE ROLLER UNIT

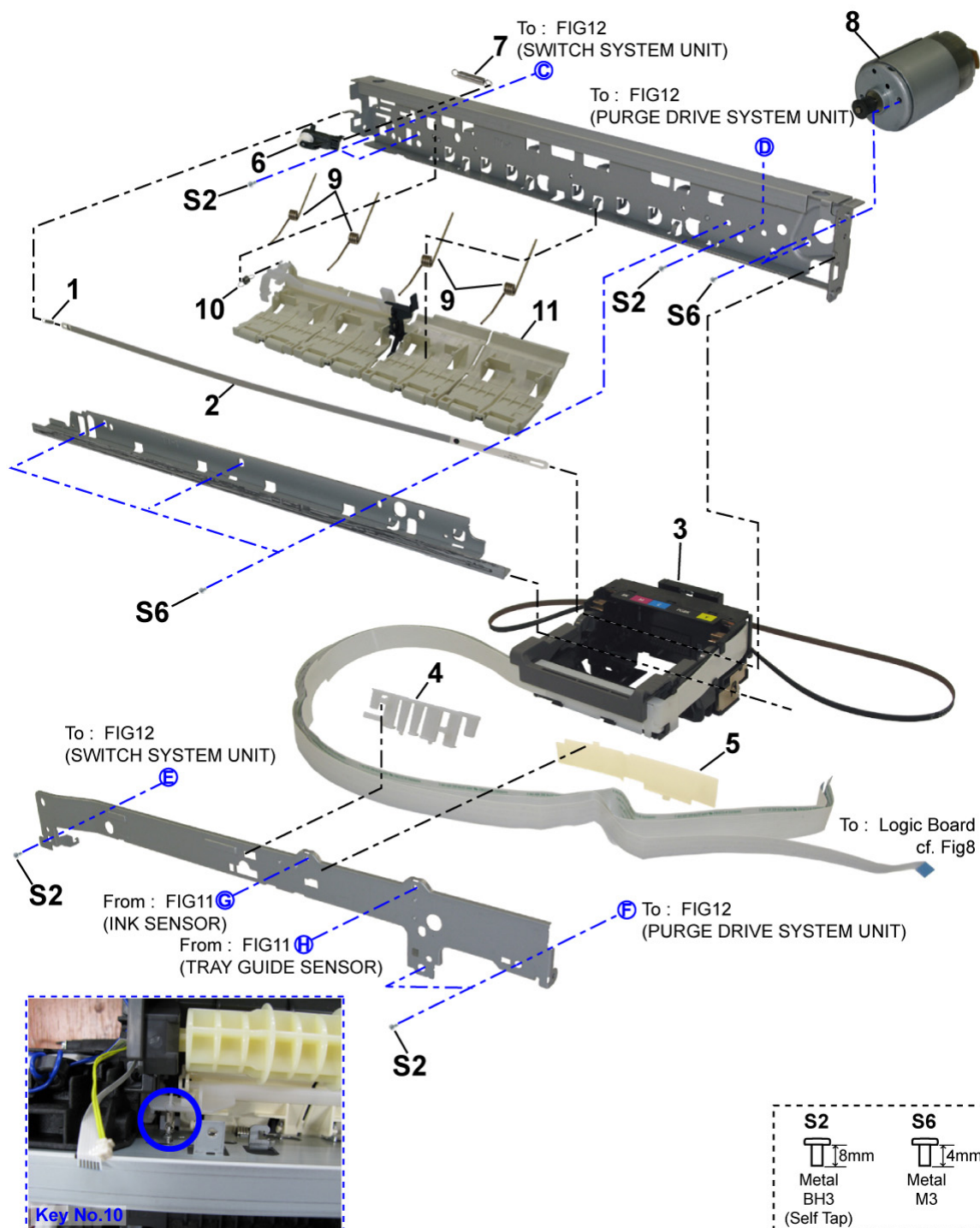


FIGURE & KEY No.		PART NUMBER	RANK	QTY	DESCRIPTION	REMARKS
10-	1	QC2-7549-000		1	SPRING, COIL	
	2	QC2-7783-000		1	FILM, TIMING SLIT STRIP	
	3	QM3-3631-000		1	CARRIAGE UNIT	
	4	QC2-7739-000		1	HOLDER, CARRIAGE CABLE	
	5	QC2-9235-000		1	COVER, CARRIAGE CABLE	
	6	QL2-2534-000		1	PULLEY HOLDER UNIT	
	7	QC1-6202-000		1	SPRING, COIL	
	8	QK1-1500-000		1	MOTOR, CARRIAGE	
	9	QC2-7528-000		4	SPRING, TORSION	
	10	QC2-7571-000		1	SPRING, COIL	
	11	QM3-3632-000		1	PRESSURE ROLLER UNIT	



FIGURE 11 PLATEN UNIT & SPUR UNIT

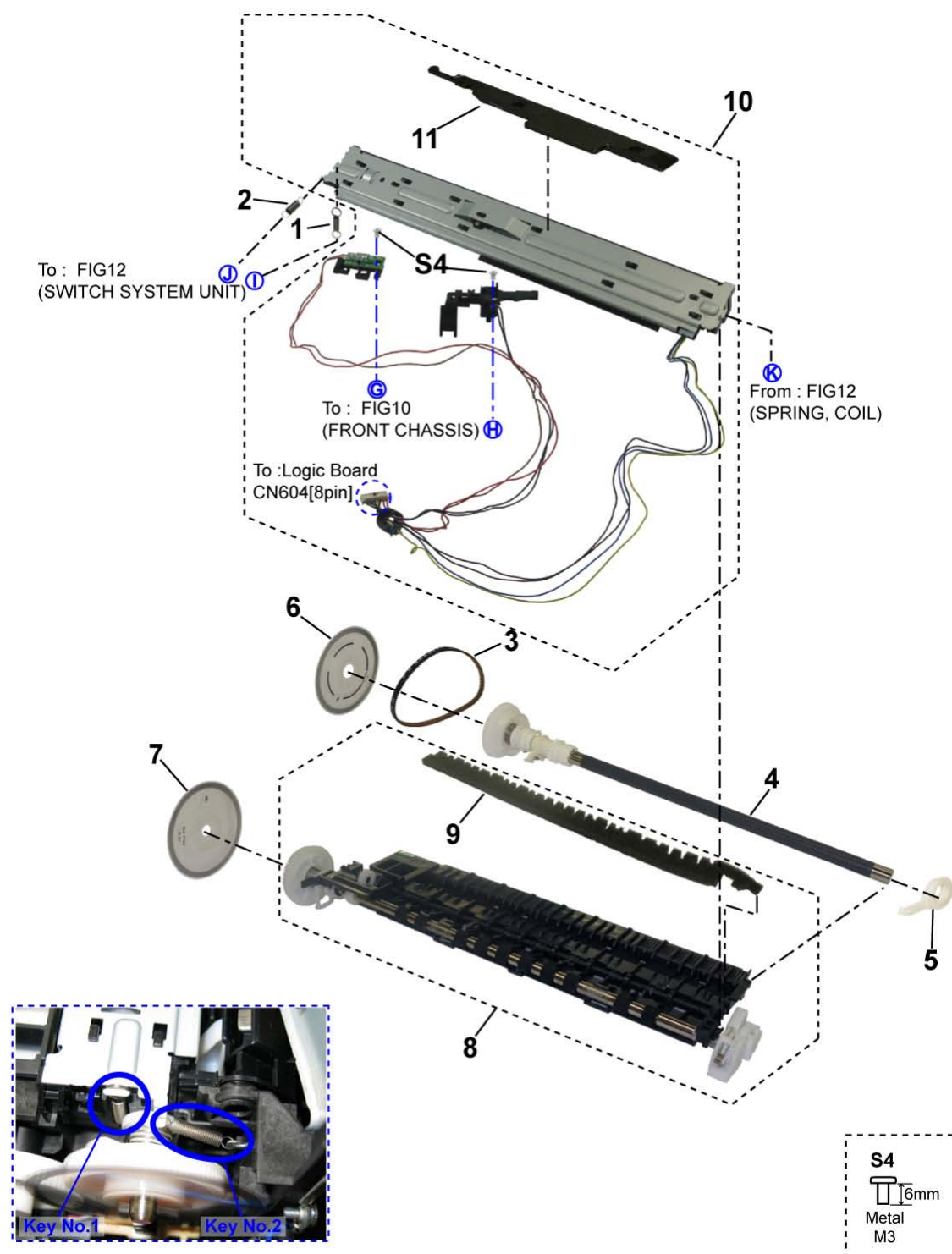


FIGURE & KEY No.		PART NUMBER	RANK	QTY	DESCRIPTION	REMARKS
11-	1	QC2-7745-000		1	SPRING, COIL	
	2	QC2-7782-000		1	SPRING, COIL	
	3	QC2-7526-000		1	BELT, PAPER FEED	
	4	QL2-2536-000		1	PAPER FEED ROLLER UNIT	
	5	QC2-7667-000		1	BUSHING, PAPER FEED ROLLER	
	6	QC2-7765-000		1	FILM, TIMING SLIT DISK FEED	
	7	QC2-7766-000		1	FILM, TIMING SLIT DISK EJECT	
	8	QM3-4758-000		1	PLATEN UNIT	
	9	QC2-7671-000		1	ABSORBER, INK	
	10	QM3-5054-000		1	SPUR UNIT	
	11	QC2-9232-000		1	GUIDE, INNER	

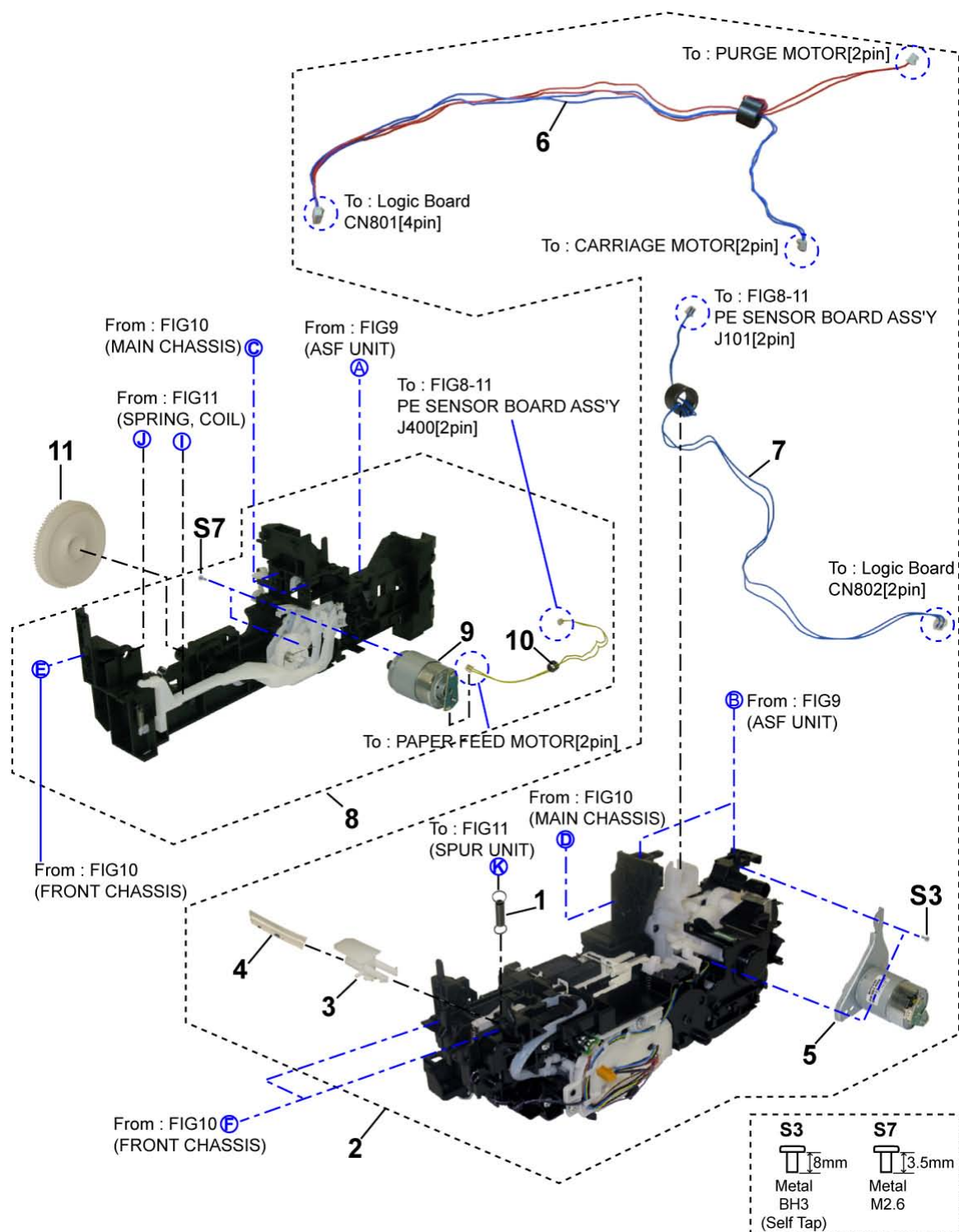
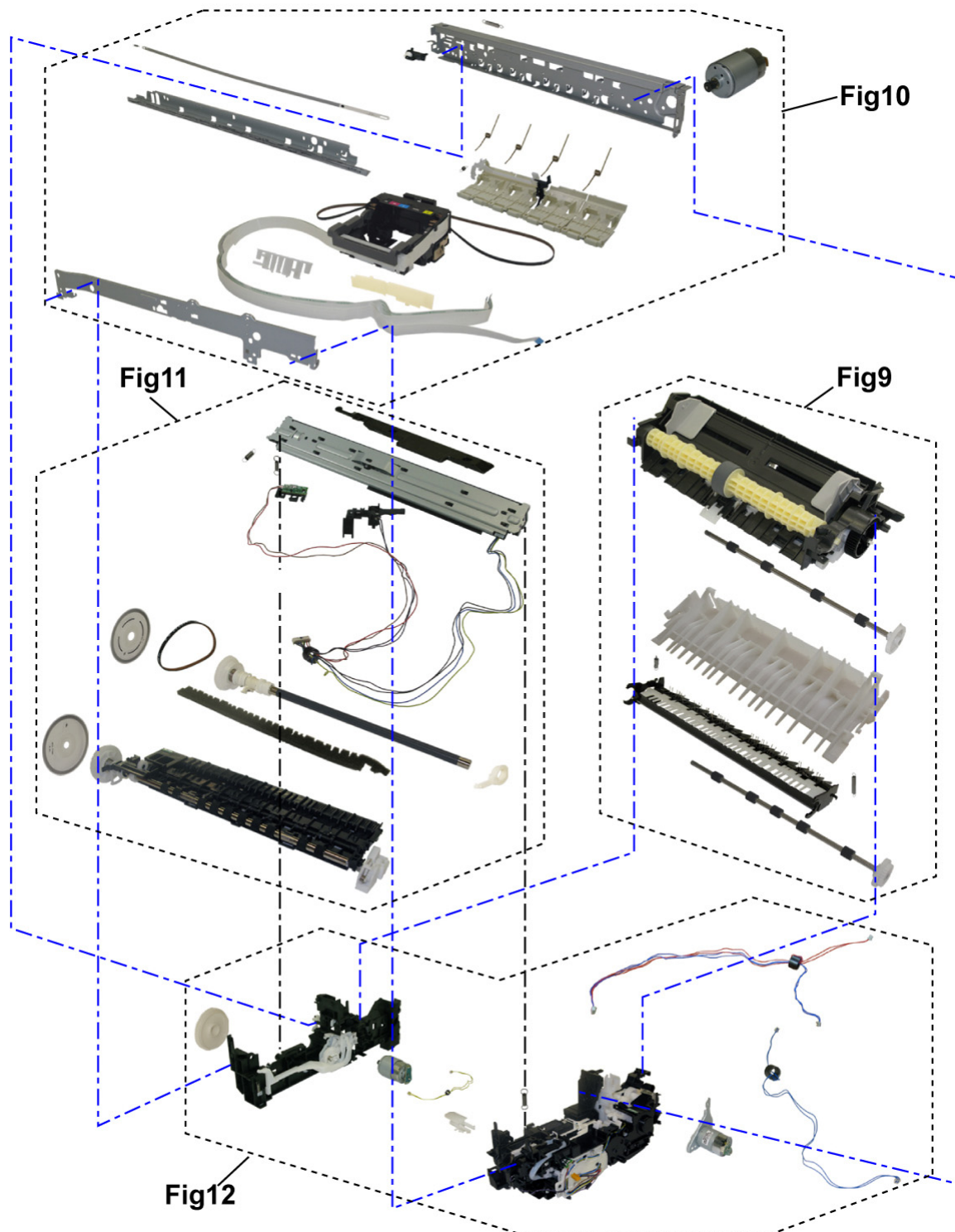
**FIGURE 12 PURGE DRIVE SYSTEM UNIT & SWITCH SYSTEM UNIT**

FIGURE & KEY No.		PART NUMBER	RANK	QTY	DESCRIPTION	REMARKS
12-	1	QC2-7787-000		1	SPRING, COIL	
	2	QM3-4759-000		1	PURGE DRIVE SYSTEM UNIT	
	3	QC2-9212-000		1	TUBE, INK JOINT	
	4	QC2-7483-000		1	TUBE, INK	
	5	QM3-3651-000		1	PURGE MOTOR UNIT	
	6	QM3-3896-000		1	MOTOR MULTI HARNESS ASS'Y	
	7	QM3-3889-000		1	PAPER FEED RELAY HARNESS ASS'Y	
	8	QM3-5052-000		1	SWITCH SYSTEM UNIT	
	9	QK1-3849-000		1	MOTOR, PAPER FEED	
	10	QM3-3887-000		1	PAPER FEED MOTOR HARNESS ASS'Y	
	11	QC2-7682-000		1	GEAR, IDLER	



REFERENCE PRINTER UNIT



This page intentionally left blank

C. OPTION & CONSUMABLES

[Contents](#)[ILLUSTRATION INDEX](#)[NUMERICAL INDEX](#)

FIGURE 13 OPTION & CONSUMABLES



FIGURE & KEY No.		PART NUMBER	RANK	QTY	DESCRIPTION	REMARKS
13-	1	NPN		1	BLACK INK TANK CLI-221BK	CONSUMABLES
		NPN		1	MAGENTA INK TANK CLI-221M	CONSUMABLES
		NPN		1	CYAN INK TANK CLI-221C	CONSUMABLES
		NPN		1	BLACK INK TANK PGI-220BK	CONSUMABLES
		NPN		1	YELLOW INK TANK CLI-221Y	CONSUMABLES
	2	NPN		1	BLACK INK TANK CLI-821BK	CONSUMABLES
		NPN		1	MAGENTA INK TANK CLI-821M	CONSUMABLES
		NPN		1	CYAN INK TANK CLI-821C	CONSUMABLES
		NPN		1	BLACK INK TANK PGI-820BK	CONSUMABLES
		NPN		1	YELLOW INK TANK CLI-821Y	CONSUMABLES
	3	NPN		1	BLACK INK TANK CLI-521BK	CONSUMABLES
		NPN		1	MAGENTA INK TANK CLI-521M	CONSUMABLES
		NPN		1	CYAN INK TANK CLI-521C	CONSUMABLES
		NPN		1	BLACK INK TANK PGI-520BK	CONSUMABLES
		NPN		1	YELLOW INK TANK CLI-521Y	CONSUMABLES
	4	NPN		1	BLACK INK TANK BCI-321BK	CONSUMABLES
		NPN		1	MAGENTA INK TANK BCI-321M	CONSUMABLES
		NPN		1	CYAN INK TANK BCI-321C	CONSUMABLES
		NPN		1	BLACK INK TANK BCI-320PGBK	CONSUMABLES
		NPN		1	YELLOW INK TANK BCI-321Y	CONSUMABLES

D. SCREW & WASHER LIST

[Contents](#)
[NUMERICAL INDEX](#)

FIGURE & KEY No.		PART NUMBER	RANK	QTY	DESCRIPTION	REMARKS
S-	1	XB4-7300-809			SCREW, TAP, BINDING HEAD, M3X8	
	2	XB4-7300-805			SCREW, TP, BH3X8	
	3	XB4-7300-605			SCREW, BH M3X6	
	4	XB1-2300-605			SCREW, MACHINE, M3X6	
	5	XA9-1752-000			SCREW, TAP, WASHER HEAD, M3X12	
	6	XB1-2300-405			SCREW, MACH.BH, M3X4	
	7	XA9-1783-000			SCREW, BINDING HEAD M2.6X3.5	
	8	XA9-1915-000			SCREW, SPRING W WASHER M3X10	

This page intentionally left blank

FIGURE 14 TOOL



FIGURE & KEY No.		PART NUMBER	RANK	QTY	DESCRIPTION	REMARKS
T-	1	QY9-0057-000		1	LUBE, FLOIL KG107A, OIL	

F. NUMERICAL INDEX

[Contents](#)
[ILLUSTRATION INDEX](#)

PART NUMBER	FIGURE & KEY No.		DESCRIPTION	PART NUMBER	FIGURE & KEY No.		DESCRIPTION
QA4-1117-000	1-	5	TRAY, CD SUB	QC2-8551-000	4-	1	COVER, PANEL
QC1-6202-000	10-	7	SPRING, COIL	QC2-8552-000	4-	1	COVER, PANEL
QC1-6457-000	7-	17	FOOT, RUBBER	QC2-9118-000	4-	1	COVER, PANEL
QC1-9023-000	3-	1	EMBLEM	QC2-9120-000	1-	6	SHEET, PANEL
QC1-9024-000	3-	1	EMBLEM	QC2-9121-000	5-	18	LABEL, PRODUCT NAME
QC2-4867-000	5-	1	HINGE, LCD	QC2-9122-000	5-	18	LABEL, PRODUCT NAME
QC2-4868-000	5-	2	SPRING, HINGE	QC2-9212-000	12-	3	TUBE, INK JOINT
QC2-7483-000	12-	4	TUBE, INK	QC2-9216-000	7-	2	SPRING, LEAF
QC2-7490-000	8-	15	COVER, GAP	QC2-9232-000	11-	11	GUIDE, INNER
QC2-7526-000	11-	3	BELT, PAPER FEED	QC2-9235-000	10-	5	COVER, CARRIAGE CABLE
QC2-7528-000	10-	9	SPRING, TORSION	QC2-9278-000	4-	2	SHEET, DOCUMENT PRESSURE
QC2-7529-000	7-	11	CASSETTE RAIL L	QC2-9282-000	7-	4	COVER, DC HARNESS ASS'Y
QC2-7533-000	7-	6	PAPER SEPARATION KNURL	QC2-9287-000	7-	18	SHEET, ANTISTATIC
QC2-7534-000	7-	5	PAPER SEPARATION SLOPE	QC3-0096-000	4-	6	SHEET, POWER LED WINDOW
QC2-7549-000	10-	1	SPRING, COIL	QC3-0097-000	4-	7	SHEET, ERROR LED WINDOW
QC2-7571-000	10-	10	SPRING, COIL	QH2-2716-000	1-	3	CORD, POWER
QC2-7654-000	7-	13	GEAR, PICK UP SHAFT	QH2-2719-000	1-	3	CORD, POWER
QC2-7657-000	9-	6	SPRING, COIL	QK1-0776-000	1-	3	CORD, POWER
QC2-7667-000	11-	5	BUSHING, PAPER FEED ROLLER	QK1-1500-000	10-	8	MOTOR, CARRIAGE
QC2-7671-000	11-	9	ABSORBER, INK	QK1-3048-000	1-	3	CORD, POWER
QC2-7678-000	8-	1	ARM, RELEASE	QK1-3761-000	1-	3	CORD, POWER
QC2-7682-000	12-	11	GEAR, IDLER	QK1-3849-000	12-	9	MOTOR, PAPER FEED
QC2-7708-000	7-	9	ROLLER, CASSETTE FEED PRESSURE	QK1-4501-000	8-	5	CABLE, PICTBRIDGE
QC2-7709-000	7-	10	SPRING, COIL	QK1-4512-000	8-	4	CABLE, CARD SLOT
QC2-7716-000	7-	8	FLAPPER, DUPLEX PAPER FEED	QK1-4964-000	2-	1	AC ADAPTER: 100V-240V 50/60HZ
QC2-7739-000	10-	4	HOLDER, CARRIAGE CABLE	QK1-4984-000	8-	12	CABLE, PE SENSOR
QC2-7743-000	9-	7	SPRING, COIL	QK1-4990-000	8-	13	CABLE, LF ENCODER
QC2-7745-000	11-	1	SPRING, COIL	QL2-2531-000	1-	4	CDR TRAY ASS'Y
QC2-7765-000	11-	6	FILM, TIMING SLIT DISK FEED	QL2-2533-000	9-	2	CASSETTE FEED ROLLER UNIT
QC2-7766-000	11-	7	FILM, TIMING SLIT DISK EJECT	QL2-2534-000	10-	6	PULLEY HOLDER UNIT
QC2-7782-000	11-	2	SPRING, COIL	QL2-2535-000	9-	4	DUPLEX PAPER FEED ROLLER UNIT
QC2-7783-000	10-	2	FILM, TIMING SLIT STRIP	QL2-2536-000	11-	4	PAPER FEED ROLLER UNIT
QC2-7787-000	12-	1	SPRING, COIL	QL2-2613-000	5-	7	LCD CABLE ASS'Y
QC2-7938-000	4-	1	COVER, PANEL	QM3-3631-000	10-	3	CARRIAGE UNIT
QC2-7939-000	3-	8	GUIDE, HARNESS	QM3-3632-000	10-	11	PRESSURE ROLLER UNIT
QC2-7943-000	3-	6	ARM, SCANNER SUPPORT	QM3-3640-000	7-	12	CASSETTE RAIL R UNIT
QC2-7976-000	8-	7	PANEL, CARD SLOT	QM3-3643-000	9-	3	CASSETTE FEED GUIDE UNIT
QC2-7990-000	7-	16	CASE, BOTTOM	QM3-3644-000	7-	14	PICK UP ARM UNIT
QC2-8010-000	4-	10	COVER, DOCUMENT TOP	QM3-3651-000	12-	5	PURGE MOTOR UNIT
QC2-8011-000	4-	12	COVER, DOCUMENT BOTTOM	QM3-3710-000	6-	2	MAIN CASE UNIT
QC2-8012-000	4-	5	COVER, PANEL L	QM3-3712-000	6-	3	FRONT DOOR UNIT
QC2-8013-000	4-	4	COVER, PANEL R	QM3-3713-000	3-	4	SIDE COVER R UNIT
QC2-8014-000	4-	3	COVER, PANEL F	QM3-3714-000	3-	5	SIDE COVER L UNIT
QC2-8020-000	5-	8	FRAME, PANEL	QM3-3715-000	3-	3	PAPER SUPPORT UNIT
QC2-8021-000	5-	9	KEY, FUNCTION	QM3-3716-000	1-	1	CASSETTE UNIT
QC2-8022-000	5-	10	KEY, OPERATION L	QM3-3719-000	3-	2	SCANNER UNIT
QC2-8023-000	5-	11	KEY, OPERATION R	QM3-3725-000	4-	11	HINGE UNIT
QC2-8024-000	5-	15	KEY, OK	QM3-3730-000	8-	2	INNER COVER UNIT
QC2-8025-000	5-	14	JOG WHEEL	QM3-3733-000	9-	1	ASF UNIT
QC2-8026-000	5-	13	BASE, JOG WHEEL	QM3-3737-000	5-	3	LCD VIEWER UNIT
QC2-8028-000	4-	8	WINDOW, POWER LED	QM3-3738-000	5-	17	PANEL BOARD ASS'Y
QC2-8029-000	4-	9	WINDOW, ERROR LED	QM3-3739-000	7-	3	FRONT DOOR LINK UNIT
QC2-8033-000	5-	16	COVER, PANEL BOARD	QM3-3811-000	7-	1	GND HARNESS ASS'Y
QC2-8035-000	5-	4	COVER, LCD FRONT	QM3-3864-000	4-	13	PANEL HARNESS ASS'Y
QC2-8036-000	5-	5	COVER, LCD TOP	QM3-3884-000	7-	7	DC HARNESS ASS'Y
QC2-8503-000	5-	6	WINDOW, LCD	QM3-3887-000	12-	10	PAPER FEED MOTOR HARNESS ASS'Y
QC2-8508-000	6-	4	CASE, SUB	QM3-3889-000	12-	7	PAPER FEED RELAY HARNESS ASS'Y
QC2-8523-000	8-	6	HOLDER, CORE	QM3-3896-000	12-	6	MOTOR MULTI HARNESS ASS'Y
QC2-8534-000	5-	12	KEY, RING	QM3-4413-000	8-	11	PE SENSOR BOARD ASS'Y
QC2-8550-000	4-	1	COVER, PANEL	QM3-4757-000	9-	5	PAPER GUIDE UNIT

PART NUMBER	FIGURE & KEY No.		DESCRIPTION
QM3-4758-000	11-	8	PLATEN UNIT
QM3-4759-000	12-	2	PURGE DRIVE SYSTEM UNIT
QM3-4762-000	6-	1	REAR GUIDE UNIT
QM3-5048-000	8-	10	LOGIC BOARD ASS'Y
QM3-5049-000	8-	8	CARD BOARD ASS'Y
QM3-5050-000	8-	9	PICTBRIDGE BOARD ASS'Y
QM3-5052-000	12-	8	SWITCH SYSTEM UNIT
QM3-5054-000	11-	10	SPUR UNIT
QY5-0235-000	7-	15	ABSORBER KIT
QY6-0072-000	1-	2	PRINT HEAD
QY9-0057-000	T-	1	LUBE, FLOIL KG107A, OIL
WE8-5781-000	8-	14	CORE, RING
WE8-6615-000	3-	7	CORE, RING
WE8-6617-000	3-	9	CORE, RING
	8-	3	
WT3-5156-000	1-	3	CORD, POWER
XA9-1752-000	S-	5	SCREW, TAP, WASHER HEAD, M3X12
XA9-1783-000	S-	7	SCREW, BINDING HEAD M2.6X3.5
XA9-1915-000	S-	8	SCREW, SPRING W WASHER M3X10
XB1-2300-405	S-	6	SCREW, MACH.BH, M3X4
XB1-2300-605	S-	4	SCREW, MACHINE, M3X6
XB4-7300-605	S-	3	SCREW, BH M3X6
XB4-7300-805	S-	2	SCREW, TP, BH3X8
XB4-7300-809	S-	1	SCREW, TAP, BINDING HEAD, M3X8