

# PIXUS MP830

# PIXMA MP830

# PARTS CATALOG

REVISION 0

0583B001AA	PIXUS MP830/ 100V(JP)
0583B002AA	PIXMA MP830/ 120V(US)
0583B003AA	PIXMA MP830/ 120V(CA)
0583B008AA	PIXMA MP830/ 220V-240V(AU)
0583B009AA	PIXMA MP830/ 220V-240V(ASA)
0583B010AA	PIXMA MP830/ 220V-240V(CN)
0583B014AA	PIXMA MP830/ 220V-240V(AT / CH / DE)
0583B015AA	PIXMA MP830/ 220V-240V(WEU)
0583B016AA	PIXMA MP830/ 220V-240V(GB / NEU)
0583B017AA	PIXMA MP830/ 220V-240V(EMB)



**Canon**

FEB. 2006

**QY8-31CN-000**

COPYRIGHT © 2006 CANON INC. CANON PIXUS MP830/PIXMA MP830 0206 0.00-0

## **Application**

This manual has been issued by Canon Inc. for qualified person to learn technical theory, installation, maintenance, and repair of products. This manual covers all localities where the products are sold. For this reason, there may be information in this manual that does not apply to your locality.

## **Corrections**

This manual could include technical inaccuracies or typographical errors due to improvements or changes in the products. When changes occur in applicable products or in the content of this manual, Canon will release technical information as the need arises. In the event of major changes in the contents of this manual over a long or short period. Canon will issue a new editions of this manual. The following paragraph does not apply to any countries where such provisions are inconsistent with local law.

## **Trademarks**

The product names and company names described in this manual are the registered trademarks of the individual companies.

## **Copyright**

This manual is copyrighted with all rights reserved. Under the copyright laws, this manual may not be copied, reproduced or translated into another language, in whole or in part, without the written consent of Canon Inc.

Copyright © 2005 by Canon Inc.

CANON INC.

Inkjet Device Quality Assurance Div. 2

451, Tsukagoshi, 3-chome, Saiwai-ku, Kawasaki-shi, Kanagawa 212-8530, Japan

This manual was created under Microsoft® Windows® 2000.

Parts layout pictures were edited using Adobe® Photoshop® 7.0. KEY No. were created using Adobe® Illustrator® 10.

HTML files were created using Microsoft® FrontPage® 2000.

## **ABOUT THIS MANUAL**

### **A. ILLUSTRATION INDEX**

For illustration index, the parts layout illustrations in this parts catalog are listed in abbreviated form in order of illustration number to identify the pages they appear on. To find an illustration of a part, see the ILLUSTRATION INDEX.

### **B. PARTS LAYOUT & PARTS LIST**

Parts layout illustration

#### **a) Parts search**

Find a part from the parts layout illustration and find its key number from the parts list to identify the part number and name. For screws, nuts, washers, lock washers, pins, spacers, see SCREWS & WASHERS LIST.

Note: If parts have the same or similar shape but different specifications, their key number is assigned to several part numbers and names in the parts list.

#### **b) Parts replacement procedure**

To replace parts, the parts layout illustrations have figure numbers according to the disassembly procedure of the product. The parts that require careful work are shown the illustration.

Parts list

#### **a) FIGURE & KEY No.**

The FIGURE & KEY No. column corresponds to the key numbers assigned to the parts in the parts layout illustration.

#### **b) PART NUMBER**

The PART NUMBER column gives the part numbers corresponding to the key numbers. To order a part, indicate the part number clearly.

Note: Parts marked NPN are not service parts.

#### **c) RANK**

The service parts with N in the RANK column are order parts.

#### **d) QTY**

The QTY column gives the number of parts in the corresponding components layout illustration.

#### **e) DESCRIPTION**

The DESCRIPTION column gives the part names in English.

To order a part, indicate the part name, too.

### **C. OPTIONS & CONSUMABLES**

These are illustrations and a list of units that can be used as optional consumable equipments.

### **D. SCREWS & WASHERS LIST**

This is a list of screws, nuts, washers, lock washers, pins, and spacers.

The QTY column does not give the number of parts used.

### **E. TOOL LIST**

This is a list of tools used for servicing products.

### **F. NUMERICAL INDEX**

All the parts listed in this parts catalog are arranged in order of part number. You can identify part locations and names from the NUMERICAL INDEX.

# Contents

## A. ILLUSTRATION INDEX ▶

## B. PARTS LAYOUT & PARTS LIST

**FIGURE 1** PACKING CONTENTS & PRINT HEAD

**FIGURE 2** POWER SUPPLY UNIT

**FIGURE 3** EXTERNAL COVERS

**FIGURE 4** ADF UNIT

**FIGURE 5** SCANNER UNIT & OPERATION PANEL UNIT

**FIGURE 6** MAIN CASE UNIT

**FIGURE 7** CARD BOARD ASS'Y & NCU BOARD ASS'Y

**FIGURE 8** LOGIC BOARD ASS'Y & RELAY BOARD ASS'Y

**FIGURE 9** BOTTOM CASE UNIT & INK ABSORBER

**FIGURE 10** SHEET FEED UNIT

**FIGURE 11** CARRIAGE UNIT

**FIGURE 12** PLATEN UNIT

**FIGURE 13** PURGE UNIT

**FIGURE 14** PAPER FEED & CARRIAGE LIFT PART

## C. OPTION & CONSUMABLES ▶

## D. SCREW & WASHER LIST ▶

## E. TOOL ▶

## F. NUMERICAL INDEX ▶

# A. ILLUSTRATION INDEX

Contents NUMERICAL INDEX

FIGURE 1 PACKING CONTENTS & PRINT HEAD



FIGURE 2 POWER SUPPLY UNIT



FIGURE 3 EXTERNAL COVERS

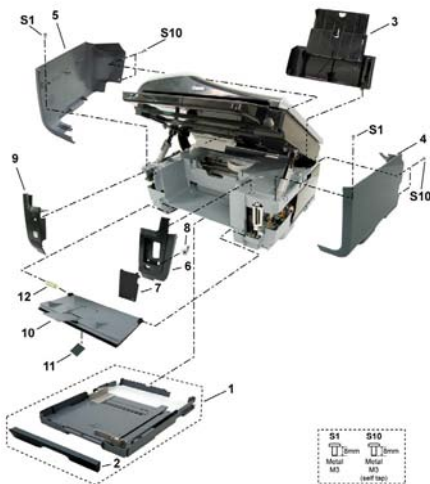


FIGURE 4 ADF UNIT

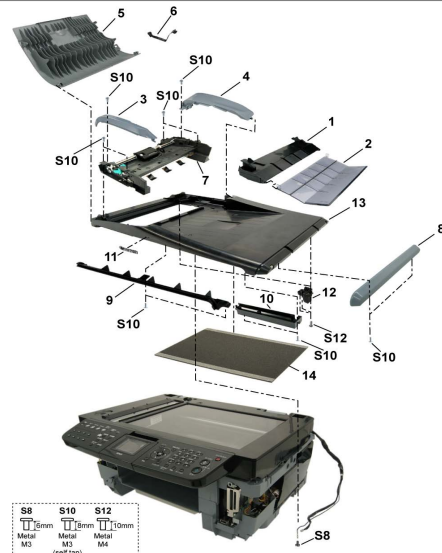


FIGURE 5 SCANNER UNIT & OPERATION PANEL UNIT

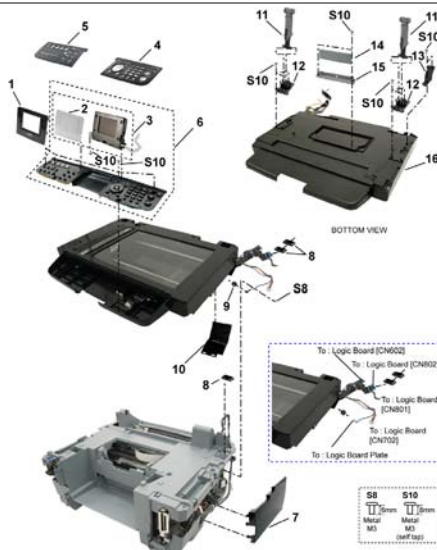
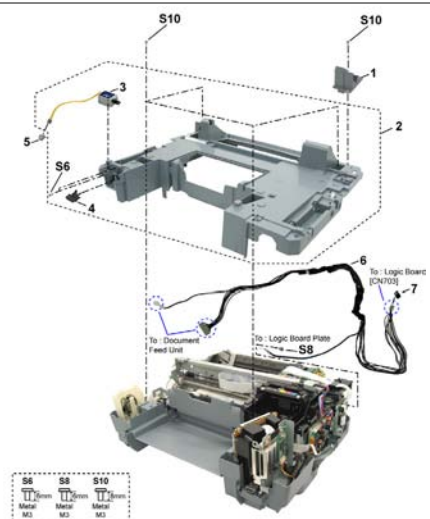
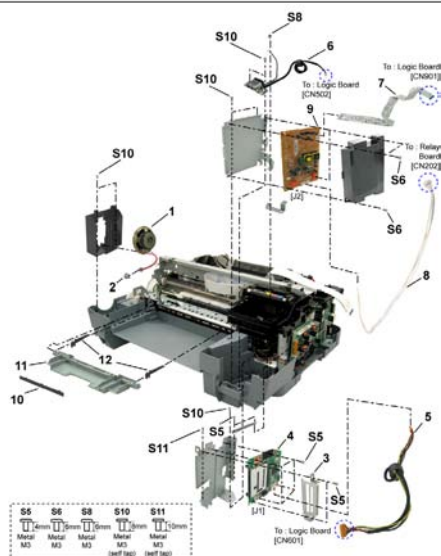


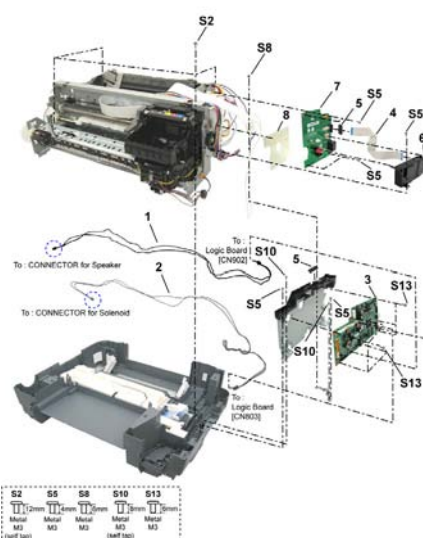
FIGURE 6 MAIN CASE UNIT



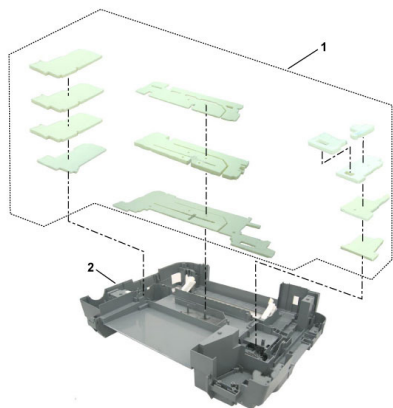
**FIGURE 7** CARD BOARD ASS'Y & NCU BOARD ASS'Y



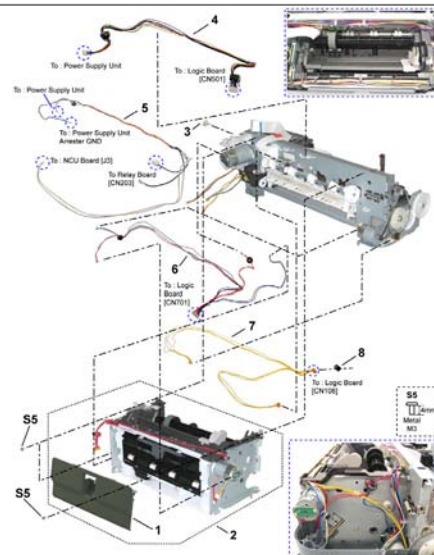
**FIGURE 8** LOGIC BOARD ASS'Y & RELAY BOARD ASS'Y



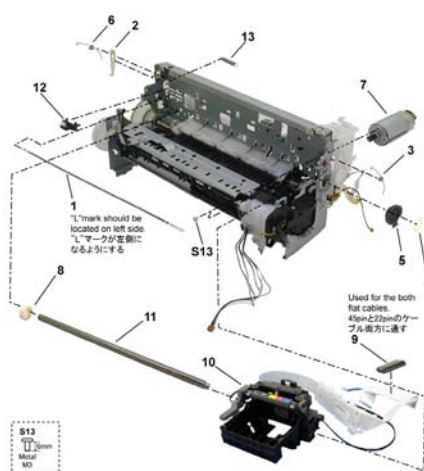
**FIGURE 9** BOTTOM CASE UNIT & INK ABSORBER



**FIGURE 10** SHEET FEED UNIT



**FIGURE 11** CARRIAGE UNIT



**FIGURE 12** PLATEN UNIT

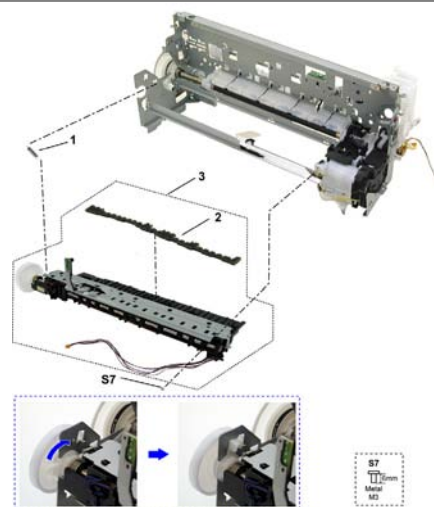
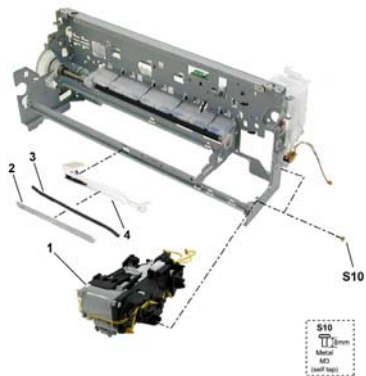


FIGURE 13 PURGE UNIT



**FIGURE 14** PAPER FEED & CARRIAGE LIFT PART

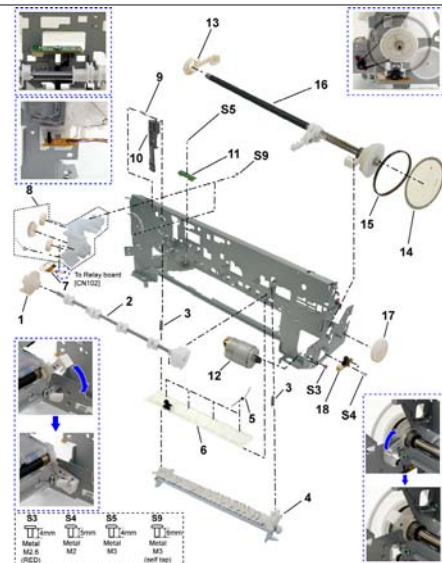
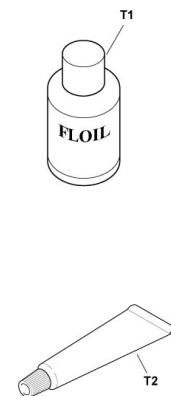


FIGURE 15 OPTION &amp; CONSUMABLES



FIGURE 16 TOOL





## B. PARTS LAYOUT & PARTS LIST

[Contents](#)[ILLUSTRATION INDEX](#)[NUMERICAL INDEX](#)

**FIGURE 1 PACKING CONTENTS & PRINT HEAD**





FIGURE & KEY No.		PART NUMBER	RANK	QTY	DESCRIPTION	REMARKS
1 -	1	QA4-1117-000		1	TRAY, CD SUB	W/ CDR PRINTING
	2	QL2-1203-000		1	CDR TRAY ASS'Y	W/ CDR PRINTING
	3	QY6-0061-000		1	PRINT HEAD	
	4	QK1-0278-000		1	CORD, POWER	100V-120V
		QK1-0279-000		1	CORD, POWER	220V-240V
		QK1-0286-000		1	CORD, POWER	100V-120V(JP)
		QK1-1061-000		1	CORD, POWER	220V-240V(AU)
		WT3-5156-000		1	CORD, POWER	220V-240V(GB, HK)
		WT3-5182-000		1	CORD, POWER	220V-240V(CHN)
	5	QC1-9057-000		1	LABEL, PANEL	AT/CH/DE,WEU,GB/NEU,EMB
	6	QC1-9060-000		1	LABEL, DESTINATION	

FIGURE 2 POWER SUPPLY UNIT



FIGURE & KEY No.		PART NUMBER	RANK	QTY	DESCRIPTION	REMARKS
2 -	1	QK1-2228-000		1	POWER SUPPLY UNIT	

FIGURE 3 EXTERNAL COVERS

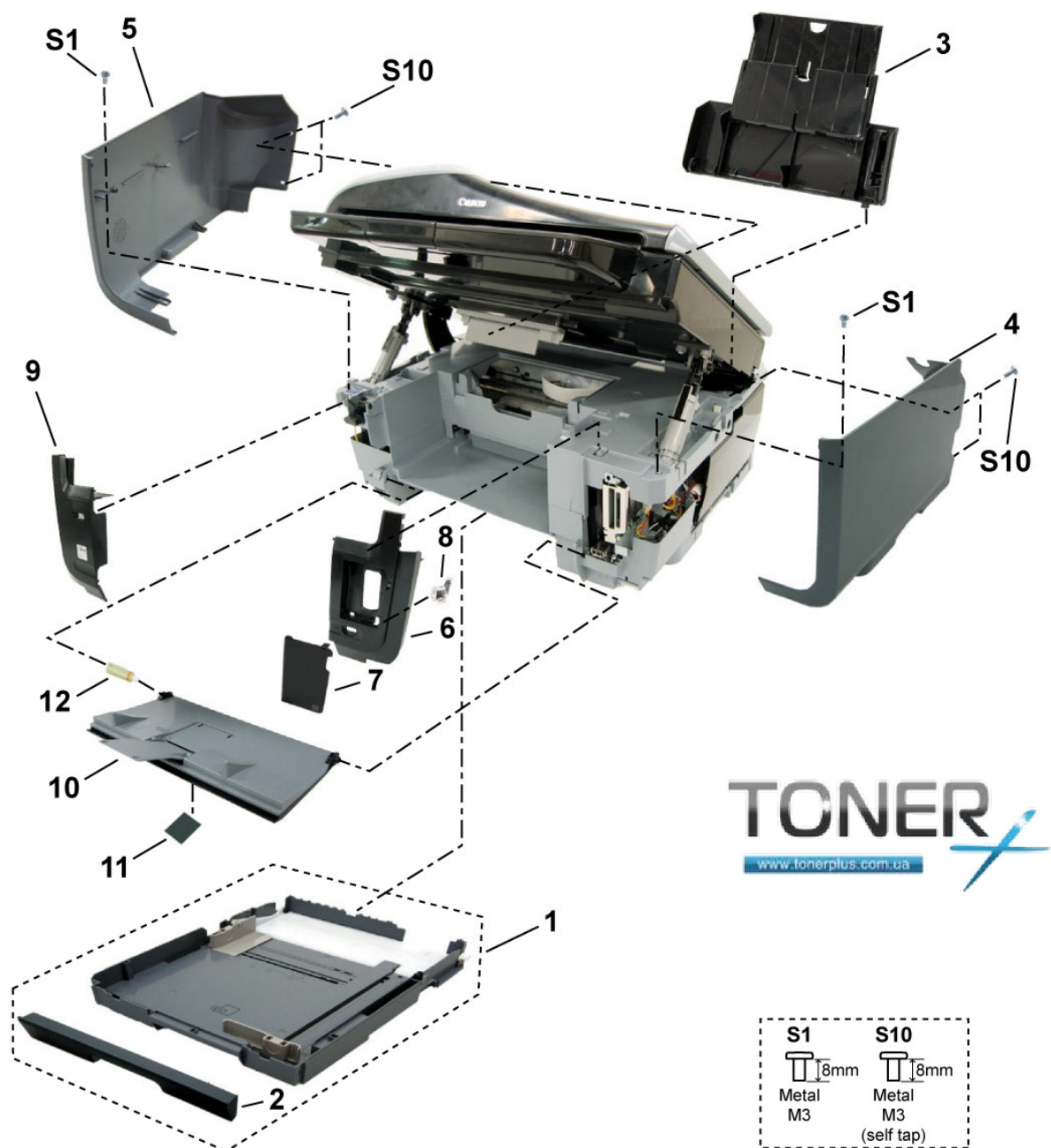


FIGURE & KEY No.		PART NUMBER	RANK	QTY	DESCRIPTION	REMARKS
3 -	1	QM2-3568-000		1	CASSETTE UNIT	
	2	QC1-9104-000		1	PANEL, CASSETTE FRONT	
	3	QM2-3008-000		1	PAPER SUPPORT UNIT	
	4	QC1-9085-000		1	COVER, SIDE R	
	5	QC1-9084-000		1	COVER, SIDE L	
	6	QC1-9108-000		1	COVER, FRONT R	
	7	QC1-9087-000		1	DOOR, CARD	
	8	QC1-8589-000		1	GUIDE, CARD LED	
	9	QM2-3575-000		1	LEFT FRONT COVER UNIT	
	10	QM2-3561-000		1	FRONT DOOR UNIT	
	11	QC1-9023-000		1	EMBLEM, PIXUS	
		QC1-9024-000		1	EMBLEM, PIXMA	
	12	QC1-6573-000		1	DAMPER, DOOR	

FIGURE 4 ADF UNIT

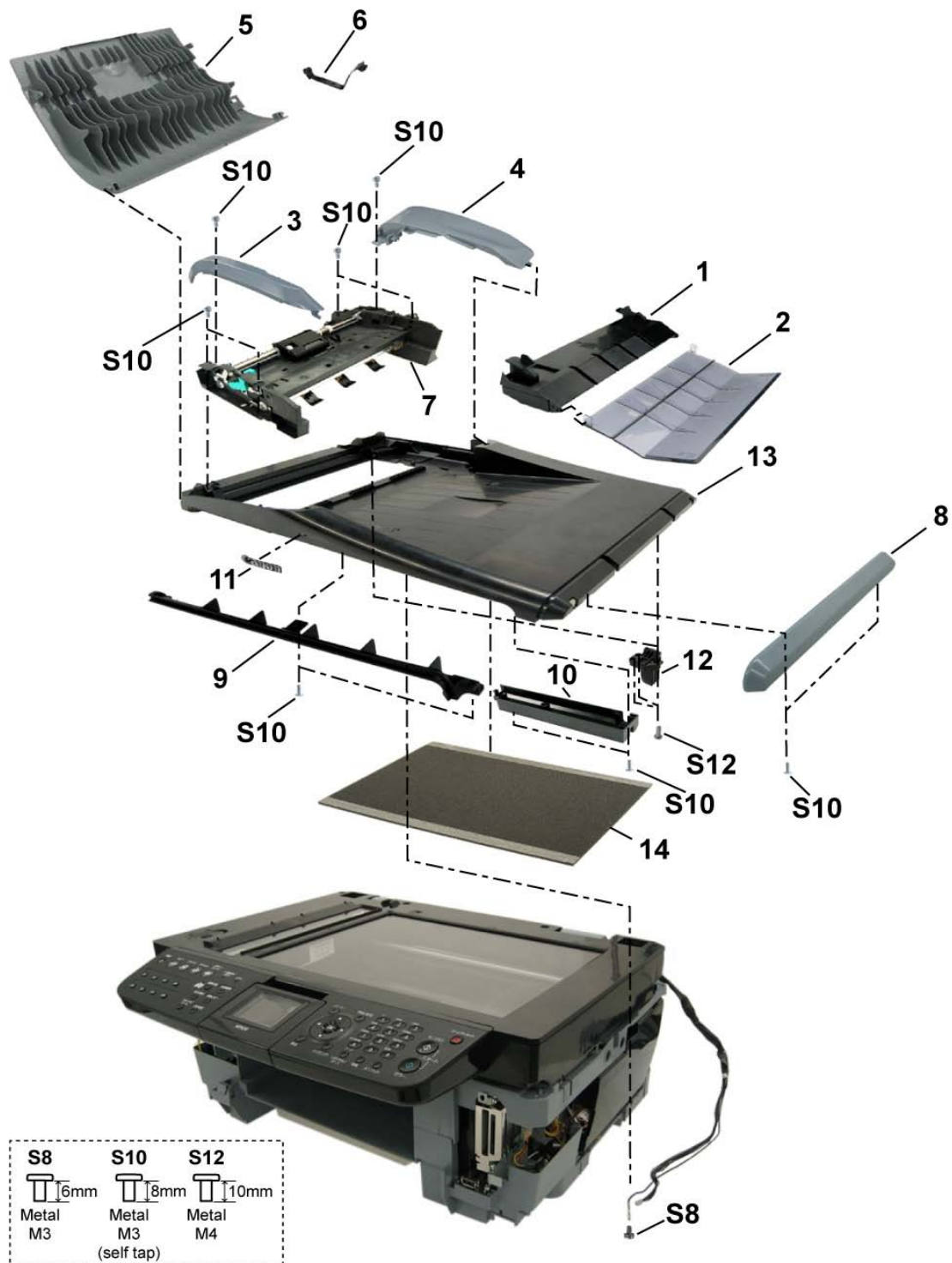


FIGURE & KEY No.		PART NUMBER	RANK	QTY	DESCRIPTION	REMARKS
4 -	1	QM2-3574-000		1	DOCUMENT FEED TRAY UNIT	
	2	QC1-9021-000		1	TRAY, DOCUMENT FEED	
	3	QC1-9012-000		1	COVER, DOCUMENT FEED FRONT	
	4	QC1-9013-000		1	COVER, DOCUMENT FEED REAR	
	5	QC1-8998-000		1	COVER, DOCUMENT FEED	
	6	HC1-0152-000		1	ARM, STOP	
	7	QM2-3573-000		1	DOCUMENT FEED UNIT	
	8	QC1-9014-000		1	COVER, DOCUMENT FEED RIGHT	
	9	QC1-9016-000		1	COVER, DOCUMENT FEED GRIP	
	10	QC1-9015-000		1	COVER, DOCUMENT FEED CABLE	
	11	QC1-7996-000		1	PLATE, LOGO	
	12	QC1-8955-000		2	HINGE, ADF UNIT	
	13	QC1-9011-000		1	BASE, DOCUMENT FEED	
	14	QC1-8416-000		1	SHEET, DOCUMENT PRESSURE	



FIGURE 5 SCANNER UNIT & OPERATION PANEL UNIT

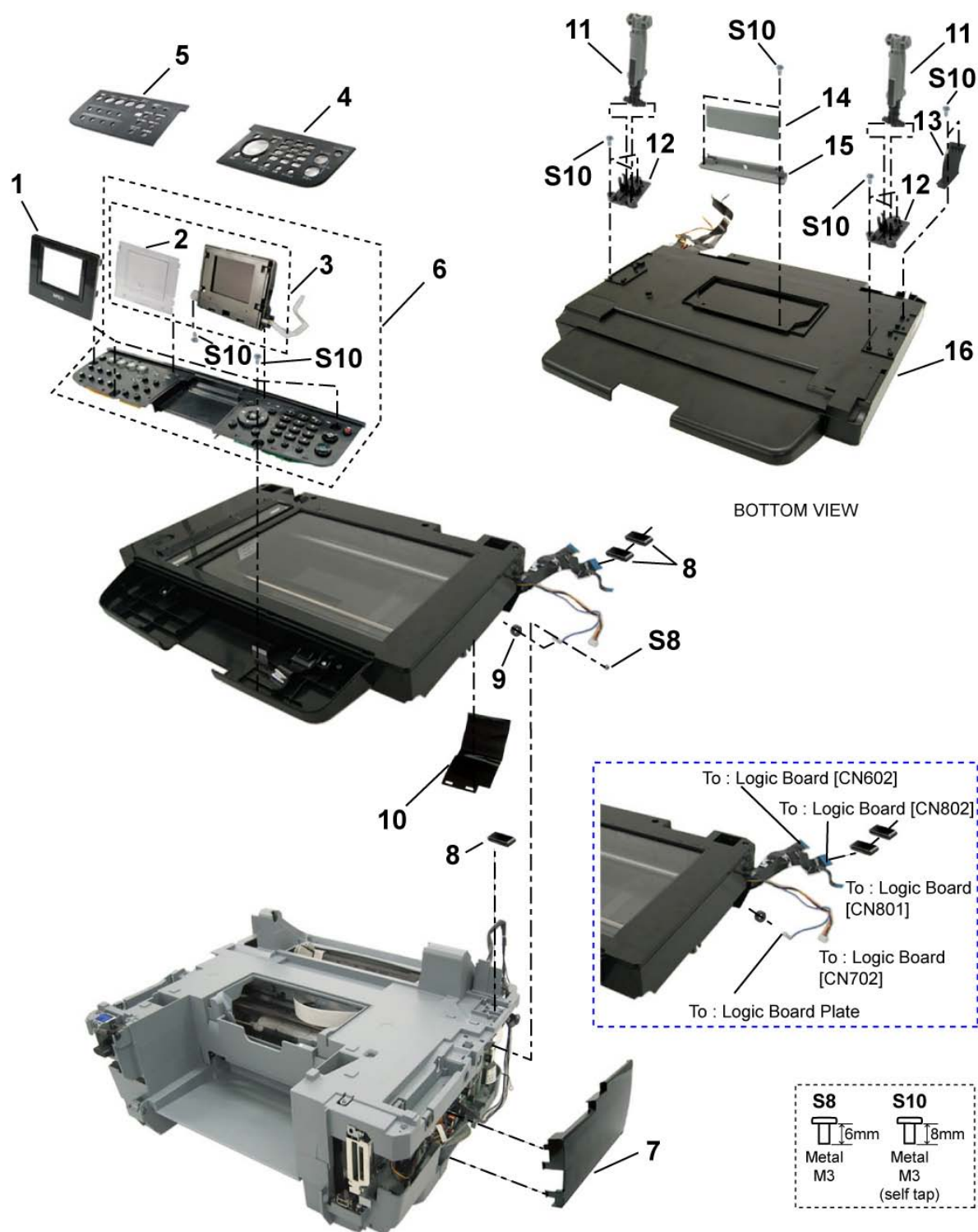


FIGURE & KEY No.		PART NUMBER	RANK	QTY	DESCRIPTION	REMARKS
5 -	1	QC1-9048-000		1	COVER, LCD	
	2	QC1-9050-000		1	WINDOW, LCD	
	3	QM2-3588-000		1	LCD VIEWER UNIT	
	4	QC1-9033-000		1	COVER, PANEL R	JP
		QC1-9063-000		1	COVER, PANEL R	US, CA, AU, ASA
		QC1-9065-000		1	COVER, PANEL R	AT/CH/DE,WEU,GB/NEU,EMB
		QC1-9067-000		1	COVER, PANEL R	CN
	5	QC1-9032-000		1	COVER, PANEL L	JP
		QC1-9062-000		1	COVER, PANEL L	US, CA, AU, ASA
		QC1-9064-000		1	COVER, PANEL L	AT/CH/DE,WEU,GB/NEU,EMB
		QC1-9066-000		1	COVER, PANEL L	CN
	6	QM2-3571-000		1	OPERATION PANEL UNIT	
	7	QC1-9092-000		1	COVER, LOGIC BOARD ASS'Y	
	8	WE8-5266-000		3	CORE	
	9	WE8-5881-000		1	CORE, RING	
	10	QC1-9116-000		1	SHEET, CABLE HOLD	
	11	QM2-3586-000		2	SCANNER STOP ARM UNIT	
	12	QC1-9073-000		2	LOCK, ARM	
	13	QC1-9074-000		1	ARM, SCANNER OPEN	
	14	QC1-8478-000		1	COVER, MIST	
	15	QC1-8465-000		1	HOLDER, MIST COVER	
	16	QK1-2222-000		1	SCANNER UNIT	

FIGURE 6 MAIN CASE UNIT

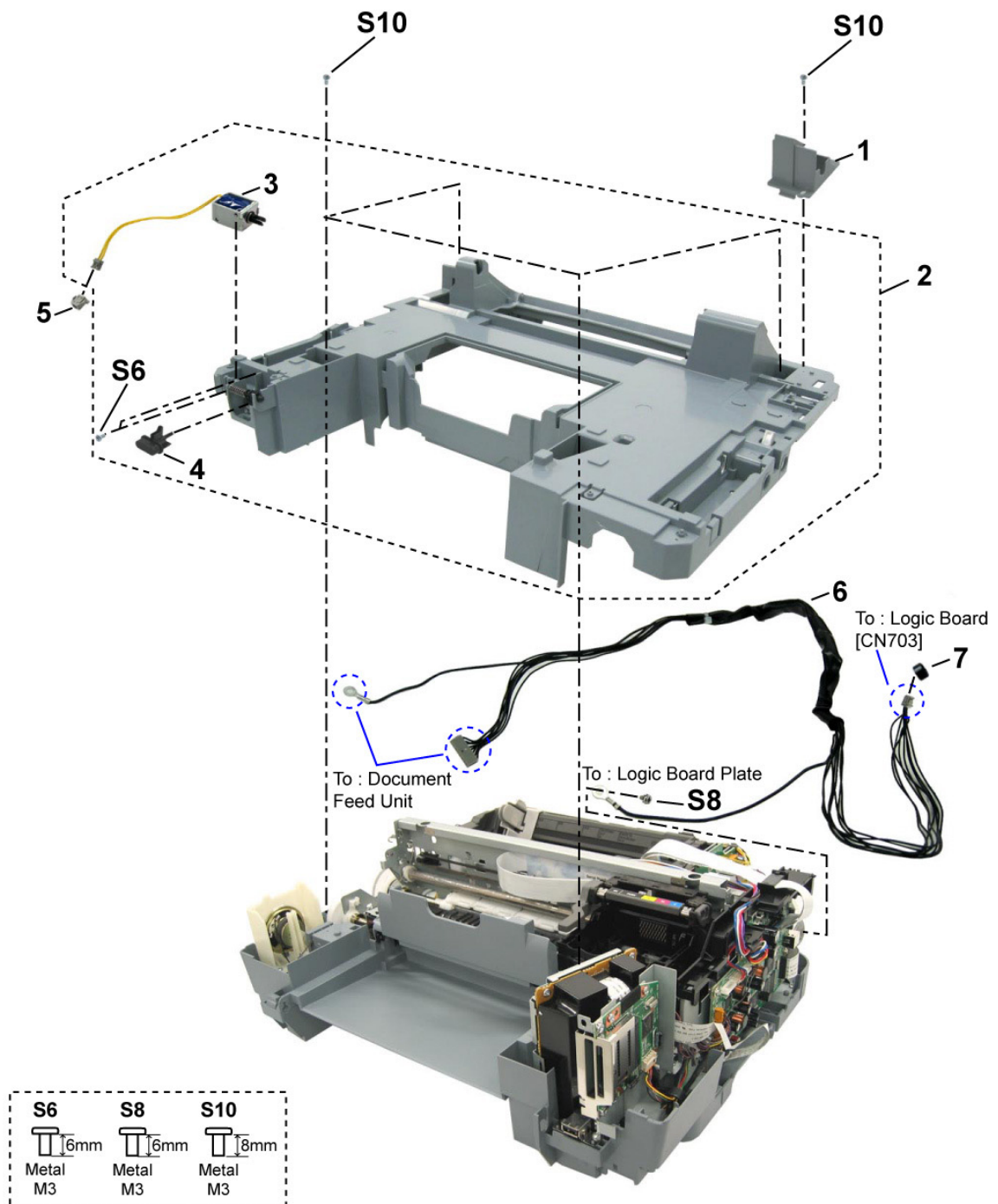


FIGURE & KEY No.		PART NUMBER	RANK	QTY	DESCRIPTION	REMARKS
6 -	1	QC1-9081-000		1	GUIDE, DOCUMENT FEED CABLE	
	2	QM2-3559-000		1	MAIN CASE UNIT	
	3	QK1-2238-000		1	SOLENOID	
	4	QC1-9103-000		1	BUTTON, OPEN	
	5	VS1-7165-002		1	CONNECTOR, CABLE	
	6	QM2-3670-000		1	ADF HARNESS UNIT	
	7	WE8-6031-000		1	CORE, RING	

FIGURE 7 CARD BOARD ASS'Y & NCU BOARD ASS'Y

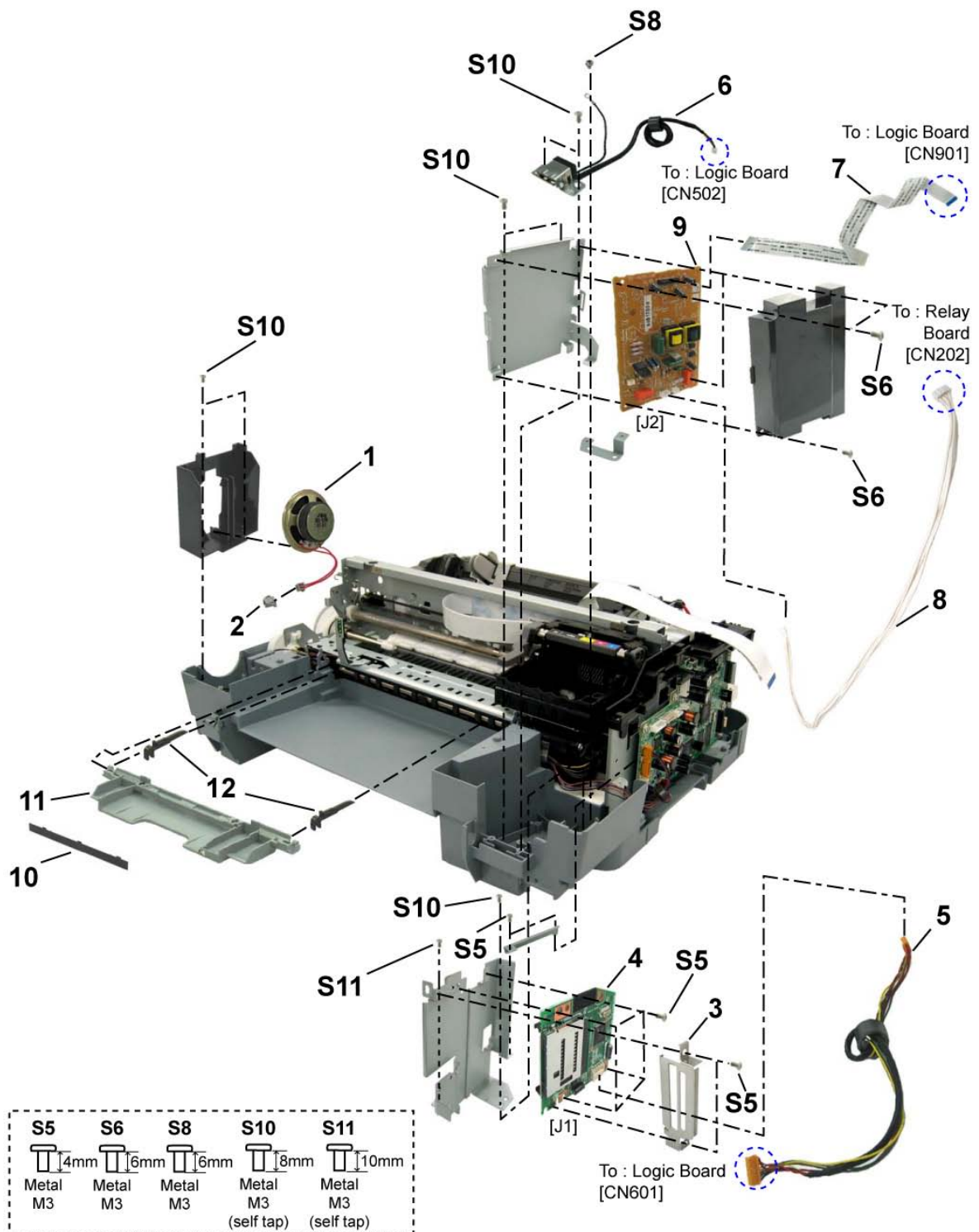


FIGURE & KEY No.		PART NUMBER	RANK	QTY	DESCRIPTION	REMARKS
7 -	1	QK1-2235-000		1	SPEAKER ASS'Y	
	2	VS1-7165-002		1	CONNECTOR, CABLE	
	3	QC1-9088-000		1	PLATE, CARD PANEL	
	4	QM2-3593-000		1	CARD BOARD ASS'Y	
	5	QM2-3663-000		1	MEMORY CARD HARNESS ASS'Y	
	6	QK1-2227-000		1	PICT BRIDGE HARNESS ASS'Y	
	7	QK1-2234-000		1	CABLE, NCU	
	8	QM2-3674-000		1	NCU HARNESS UNIT	
	9	QM2-3592-000		1	NCU BOARD ASS'Y	
	10	QC1-6199-000		1	COVER, CDR TRAY BASE	W/O CDR PRINTING
	11	QM2-3577-000		1	INNER COVER UNIT	
	12	QC1-7454-000		2	ARM, RELEASE	



**FIGURE 8 LOGIC BOARD ASS'Y & RELAY BOARD ASS'Y**

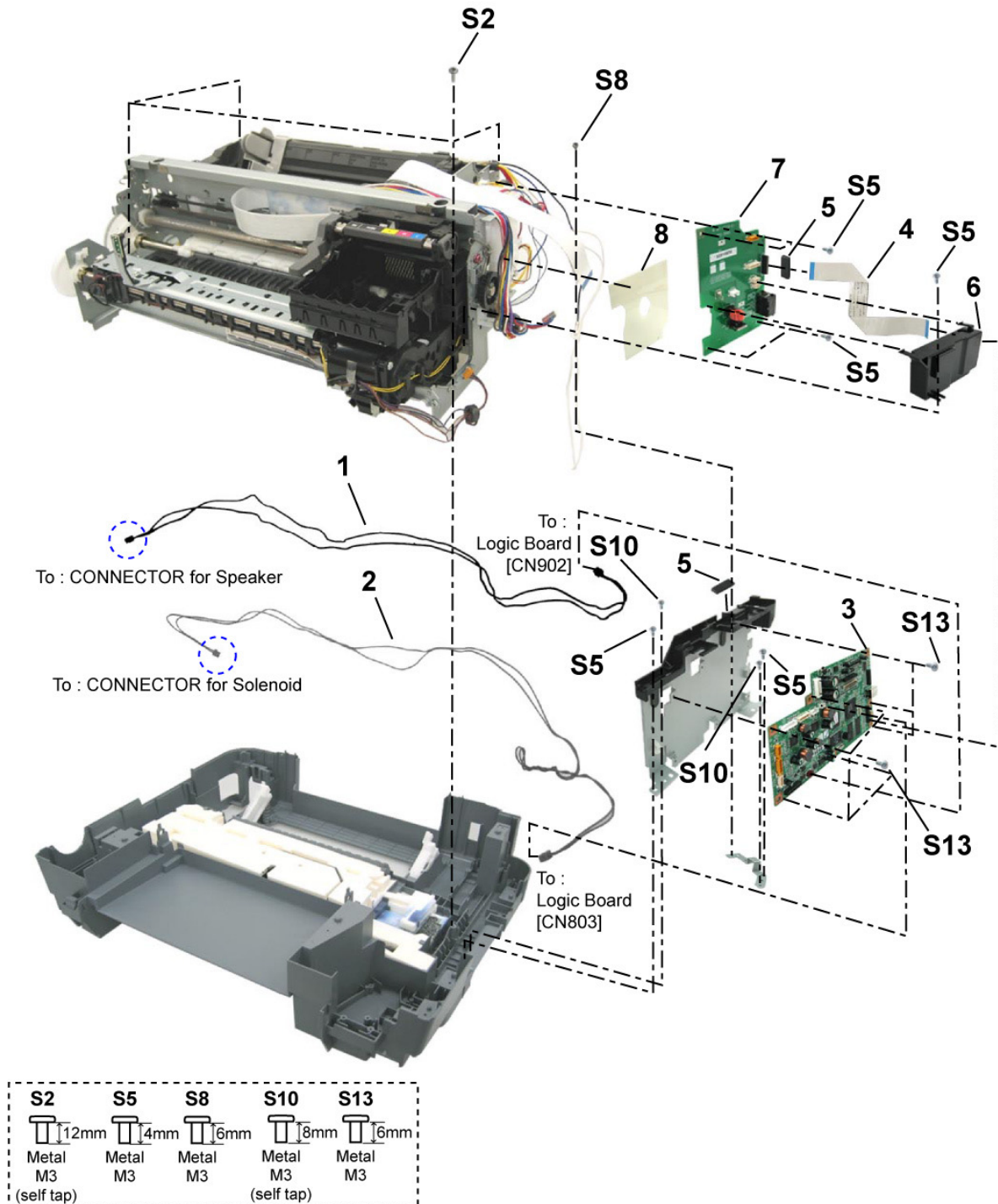




FIGURE & KEY No.		PART NUMBER	RANK	QTY	DESCRIPTION	REMARKS
8 -	1	QM2-3677-000		1	SPERKER RELAY HARNESS UNIT	
	2	QM2-3664-000		1	SOLENOID RELAY HARNESS ASS'Y	
	3	QM2-3659-000		1	LOGIC BOARD ASS'Y	
	4	QK1-2230-000		1	CABLE, PRINTER RELAY	
	5	WE8-5266-000		2	CORE	
	6	QC1-9093-000		1	COVER, RELAY BOARD	
	7	QM2-3591-000		1	RELAY BOARD ASS'Y	
	8	QC1-9101-000		1	SHEET, CHASSIS R	

FIGURE 9 BOTTOM CASE UNIT & INK ABSORBER

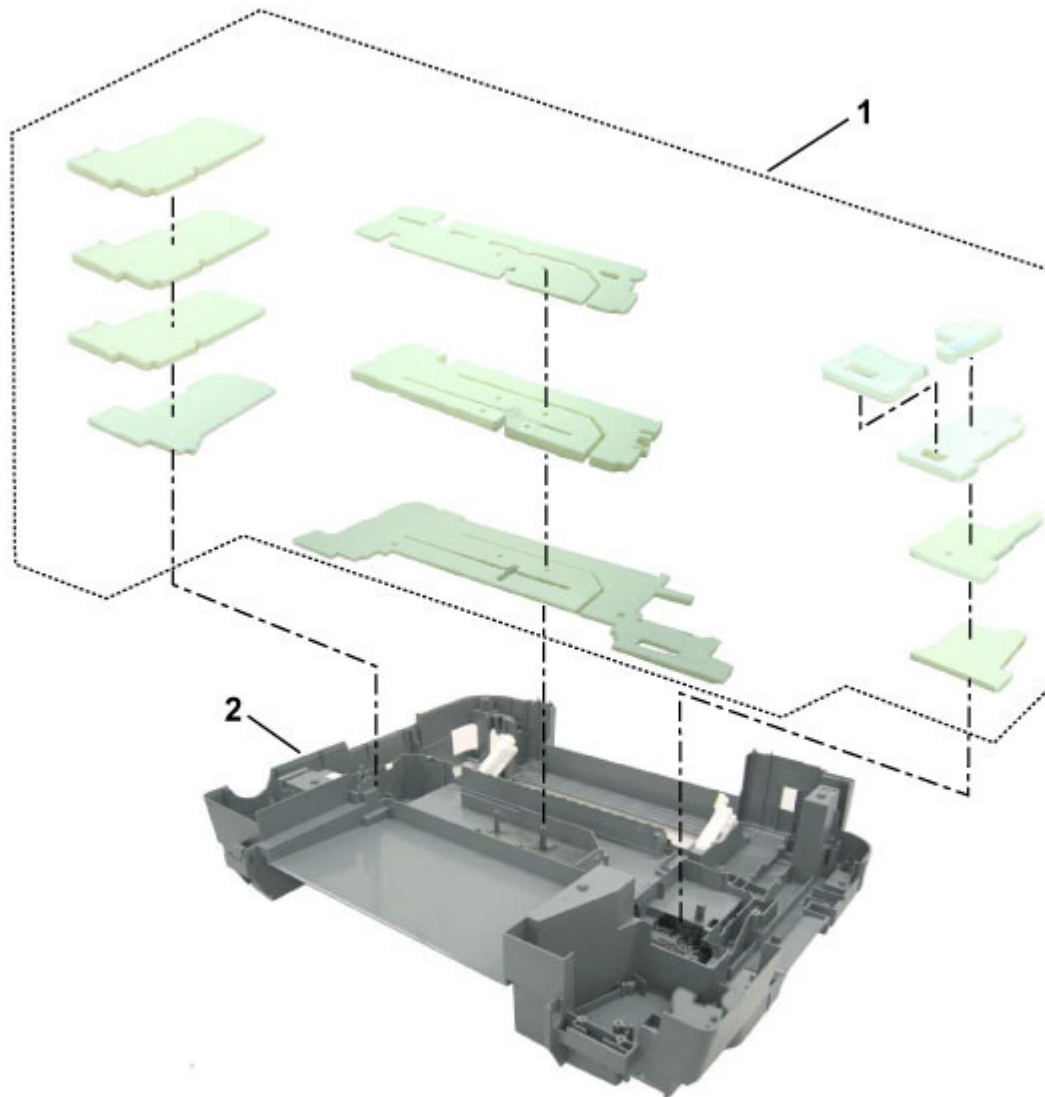


FIGURE & KEY No.		PART NUMBER	RANK	QTY	DESCRIPTION	REMARKS
9 -	1	QY5-0153-000		1	ABSORBER KIT	
	2	QM2-3560-000		1	BOTTOM CASE UNIT	

FIGURE 10 SHEET FEED UNIT

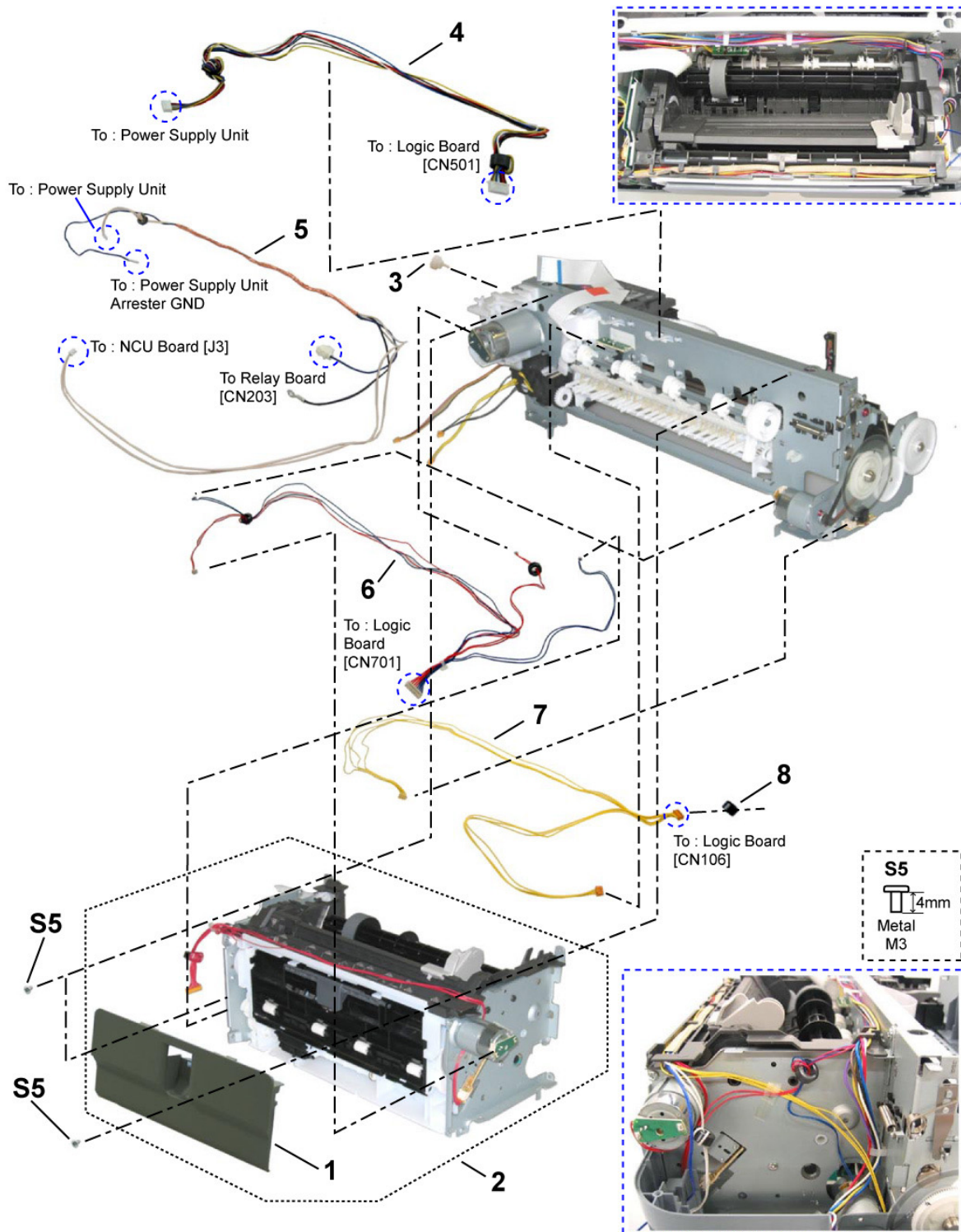


FIGURE & KEY No.		PART NUMBER	RANK	QTY	DESCRIPTION	REMARKS
10 -	1	QC1-8013-000		1	COVER, PAPER FEED GUIDE	
	2	QM2-3016-000		1	SHEET FEED UNIT	
	3	QC1-6213-000		1	GEAR, INPUT CARRIAGE LIFT	
	4	QM2-3665-000		1	DC CONNECTOR ASS'Y	
	5	QM2-3685-000		1	ARG-PCI HARNESS UNIT	
	6	QM2-3678-000		1	MOTOR MULTI HARNESS ASS'Y	
	7	QM2-3124-000		1	SENSOR MULTI HARNESS ASS'Y	
	8	WE8-5881-000		1	CORE, RING	

FIGURE 11 CARRIAGE UNIT

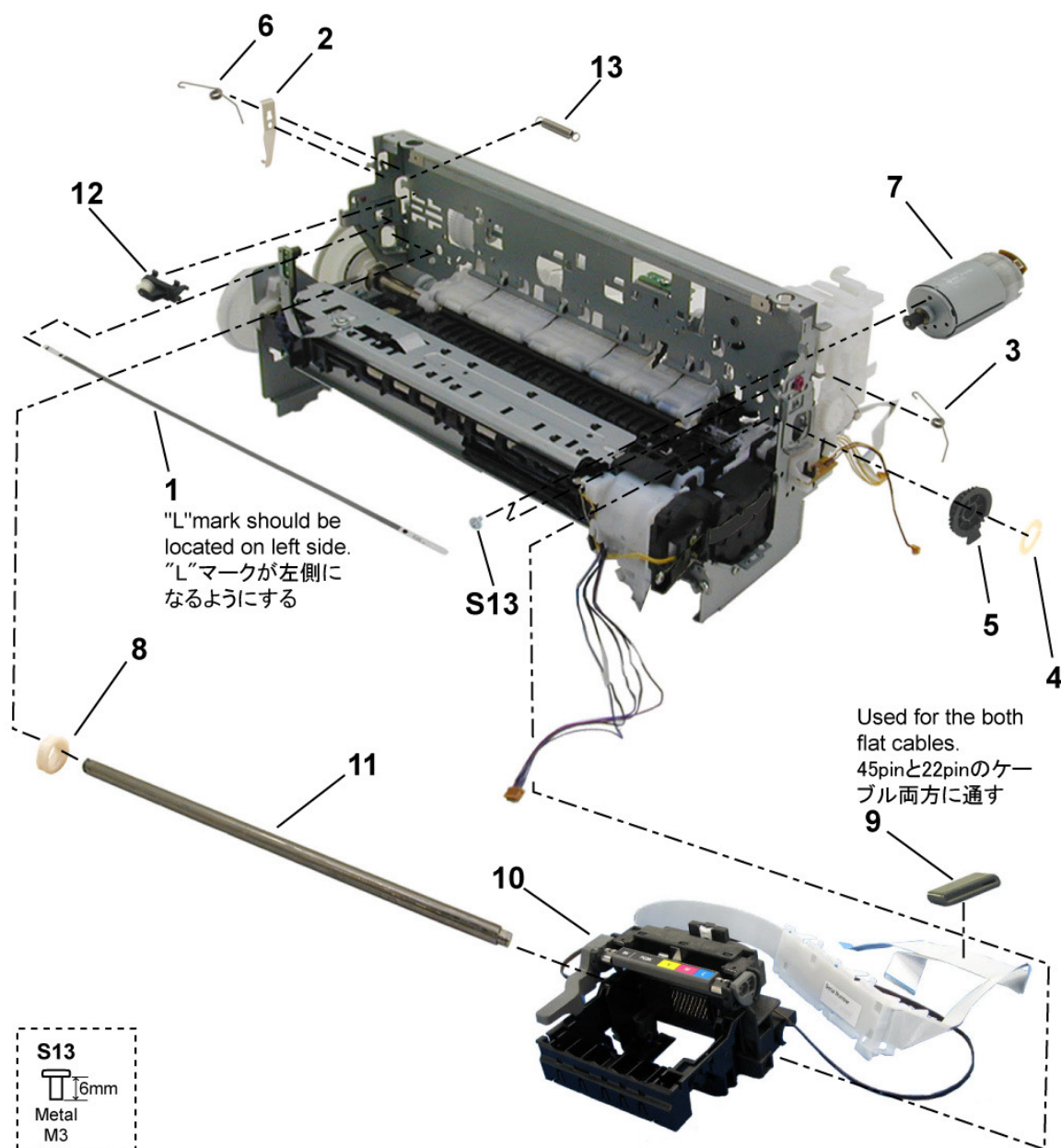


FIGURE & KEY No.		PART NUMBER	RANK	QTY	DESCRIPTION	REMARKS
11 -	1	QC1-6526-000		1	FILM, TIMING SLIT STRIP	
	2	QC1-6201-000		1	SPRING, LEAF	
	3	QC1-6207-000		1	CLIP, SHAFT R	
	4	QC1-6306-000		1	RING, CARRIAGE SHAFT	
	5	QC1-6209-000		1	CAM, CARRIAGE SHAFT R	
	6	QC1-6206-000		1	CLIP, SHAFT L	
	7	QK1-1500-000		1	MOTOR, CARRIAGE	
	8	QC1-6208-000		1	CAM, CARRIAGE SHAFT L	
	9	WE8-5266-000		1	CORE	
	10	QM2-3025-020		1	CARRIAGE UNIT	
	11	QC1-6523-000	N	1	SHAFT, CARRIAGE	
	12	QL2-0938-000		1	IDLER PULLEY ASS'Y	
	13	QC1-6202-000		1	SPRING, COIL	



**FIGURE 12 PLATEN UNIT**

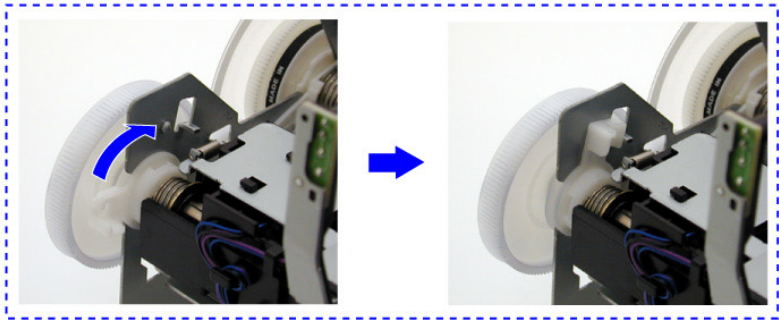


FIGURE & KEY No.		PART NUMBER	RANK	QTY	DESCRIPTION	REMARKS
12 -	1	QC1-6619-000		1	SPRING, TORSION	
	2	QC1-6272-000		1	ABSORBER, INK	
	3	QM2-3565-000		1	PLATEN UNIT	

FIGURE 13 PURGE UNIT

**TONER**  
www.tonerplus.com.ua

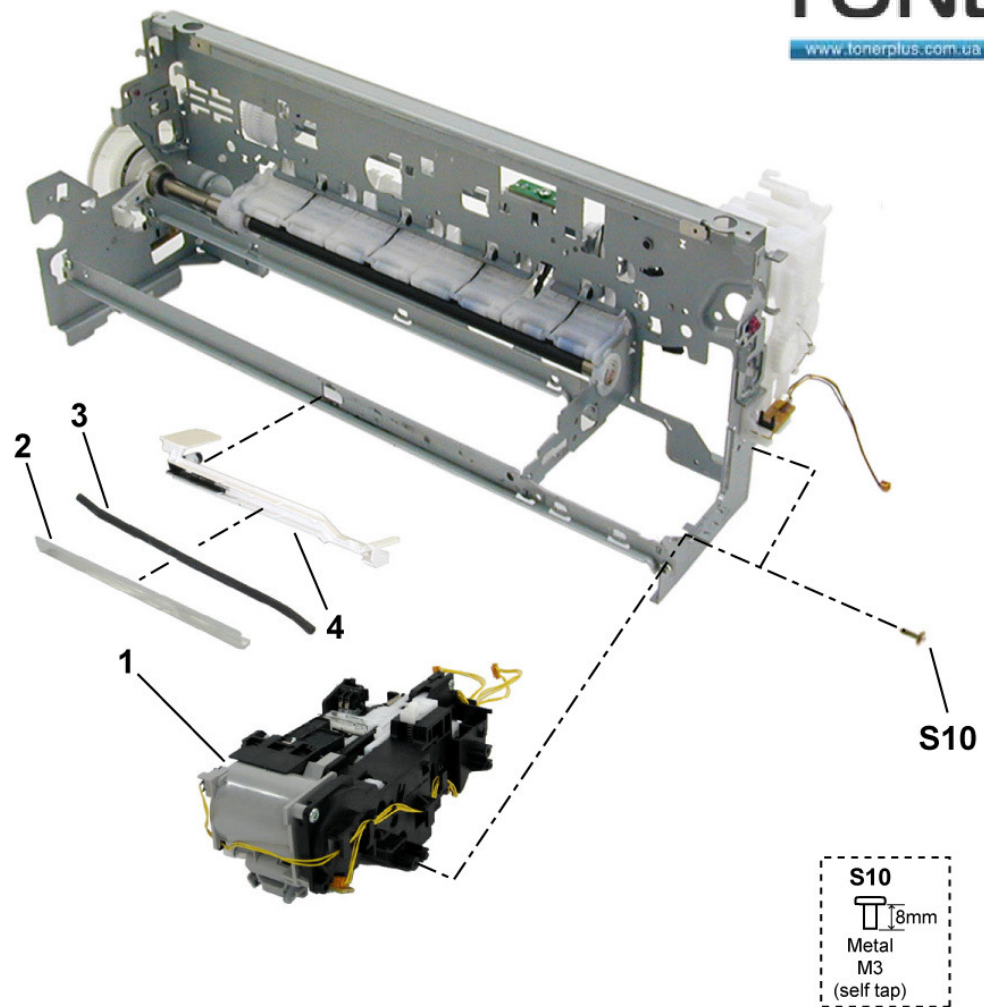


FIGURE & KEY No.		PART NUMBER	RANK	QTY	DESCRIPTION	REMARKS
13 -	1	QM2-3032-000		1	PURGE UNIT	
	2	QC1-6499-000		1	COVER, WASTE INK TUBE	
	3	QC1-6458-000		1	TUBE, WASTE INK	
	4	QC1-6460-000		1	HOLDER, WASTE INK TUBE	

FIGURE 14 PAPER FEED & CARRIAGE LIFT PART

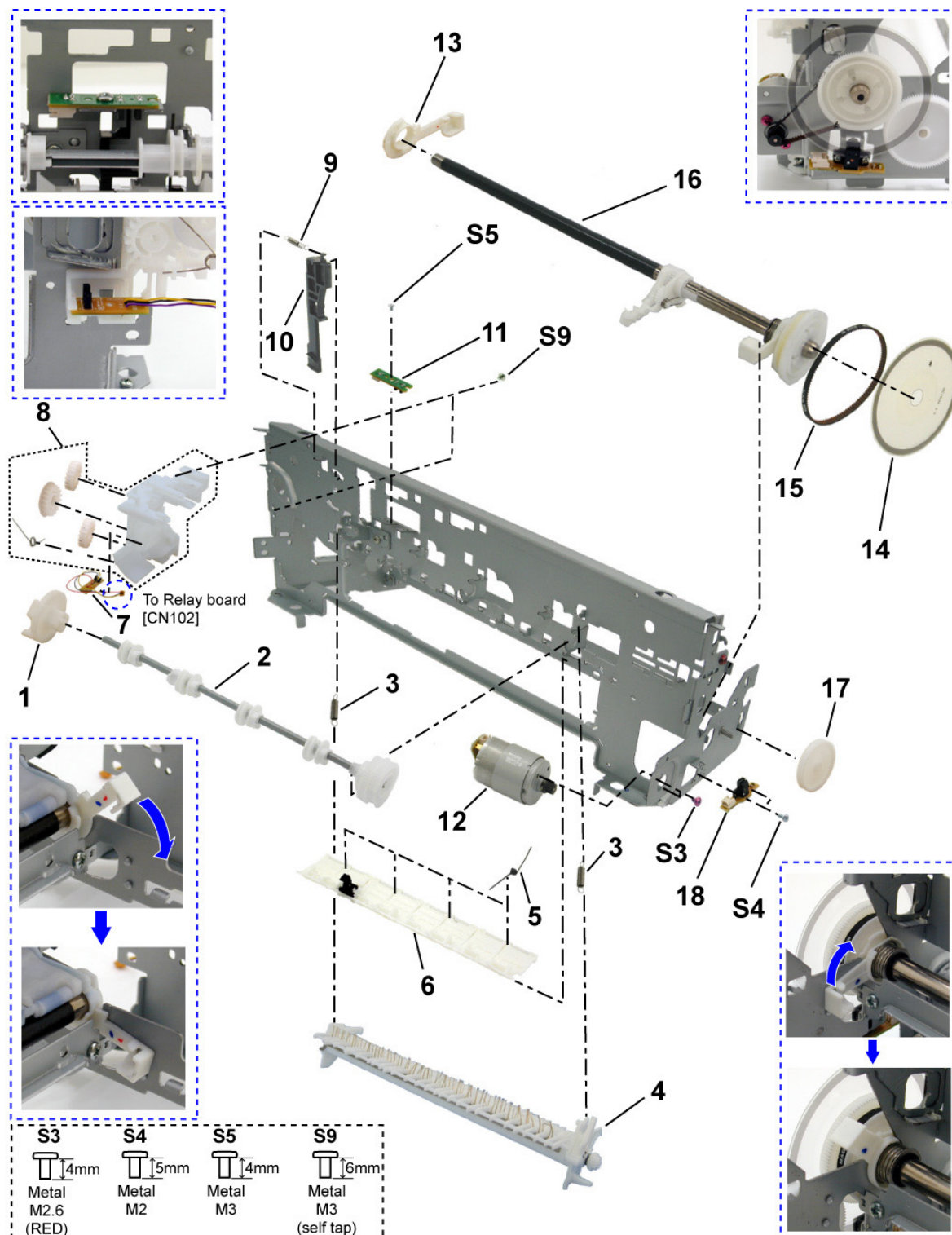


FIGURE & KEY No.		PART NUMBER	RANK	QTY	DESCRIPTION	REMARKS
14 -	1	QC1-6216-000		1	CAM, SWING ARM LOCK	
	2	QL2-0936-000		1	PR LIFT SHAFT ASS'Y	
	3	QC1-6232-000		2	SPRING, TENSION	
	4	QM2-2265-000		1	PAPER GUIDE UNIT	
	5	QC1-6226-000		4	SPRING, TORSION	
	6	QM2-2201-000		1	PRESSURE ROLLER ASS'Y	
	7	QM2-3092-000		1	CARRIAGE LIFT SENSOR UNIT	
	8	QM2-2232-000		1	CARRIAGE LIFT GEAR BASE UNIT	
	9	QC1-6471-000		1	SPRING, TENSION	
	10	QC1-6217-000		1	LEVER, SWING ARM LOCK	
	11	QM2-2677-000		1	PE SENSOR UNIT	
	12	QK1-1502-000		1	MOTOR, PAPER FEED	
	13	QC1-6227-000		1	BUSHING	
	14	QC1-6229-000		1	FILM, TIMING SLIT DISK	
	15	QC1-6230-000		1	BELT, PAPER FEED	
	16	QL2-0950-000		1	FEED ROLLER ASS'Y	
	17	QC1-6225-000		1	GEAR, EJECT	
	18	QM2-2683-000		1	TIMING SENSOR UNIT	



**FIGURE 15 OPTION & CONSUMABLES**

**1**  
For PIXUS MP830



**2**  
For PIXMA MP830





FIGURE & KEY No.		PART NUMBER	RANK	QTY	DESCRIPTION	REMARKS
15 -	1	NPN		1	BLACK INK TANK BCI-9BK	CONSUMABLES
		NPN		1	BLACK INK TANK BCI-7eBK	CONSUMABLES
		NPN		1	YELLOW INK TANK BCI7eY	CONSUMABLES
		NPN		1	MAGENTA INK TANK BCI-7eM	CONSUMABLES
		NPN		1	CYAN INK TANK BCI-7eC	CONSUMABLES
	2	NPN		1	BLACK INK TANK PGI-5BK	CONSUMABLES
		NPN		1	BLACK INK TANK CLI-8BK	CONSUMABLES
		NPN		1	YELLOW INK TANK CLI-8Y	CONSUMABLES
		NPN		1	MAGENTA INK TANK CLI-8M	CONSUMABLES
		NPN		1	CYAN INK TANK CLI-8C	CONSUMABLES

## D. SCREW & WASHER LIST

[Contents](#)
[NUMERICAL INDEX](#)

FIGURE & KEY No.		PART NUMBER	RANK	QTY	DESCRIPTION	REMARKS
S -	1	XA9-0476-000			SCREW, TP M3X8	
	2	XA9-1258-000			SCREW, TAP, WASHER HEAD, M3X12	
	3	XA9-1437-000			SCREW, BIND, M2.6X4(RED)	
	4	XB1-2200-505			SCREW, MACH, TRUSS HEAD, M2X5	
	5	XB1-2300-405			SCREW, MACH.BH, M3X4	
	6	XB1-2300-605			SCREW, MACHINE, M3x6	
	7	XB2-4300-605			SCREW, W/WASHER, M3X6	
	8	XB2-7300-605			SCREW, W/WASHER, M3X6	
	9	XB4-7300-605			SCREW, BH M3X6	
	10	XB4-7300-805			SCREW, TP, BH3X8	
	11	XB4-7301-005			SCREW, M3x10	
	12	XB4-7401-005			SCREW, TAPPIG, TRUSS HEAD, M4X10	
	13	XB6-7300-605			SCREW, MACHINE, WASHER HEAD, M3x6	

**This page intentionally left blank**

FIGURE 16 TOOL

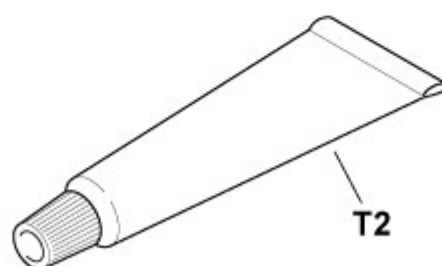


FIGURE & KEY No.		PART NUMBER	RANK	QTY	DESCRIPTION	REMARKS
T -	1	QY9-0057-000		1	LUBE, FLOIL KG107A, OIL	
	2	CK-0562-000		1	GREASE, MOLYKOTE PG-641	

# F. NUMERICAL INDEX

Contents ILLUSTRATION INDEX

PART NUMBER	FIGURE & KEY No.	DESCRIPTION	PART NUMBER	FIGURE & KEY No.	DESCRIPTION
CK-0562-000	T - 2	GREASE, MOLYKOTE PG641	QC1-9074-000	5 - 13	ARM, SCANNER OPEN
HC1-0152-000	4 - 6	ARM, STOP	QC1-9081-000	6 - 1	GUIDE, DOCUMENT FEED CABLE
QA4-1117-000	1 - 1	TRAY, CD SUB	QC1-9084-000	3 - 5	COVER, SIDE L
QC1-6199-000	7 - 10	COVER, CDR TRAY BASE	QC1-9085-000	3 - 4	COVER, SIDE R
QC1-6201-000	11 - 2	SPRING, LEAF	QC1-9087-000	3 - 7	DOOR, CARD
QC1-6202-000	11 - 13	SPRING, COIL	QC1-9088-000	7 - 3	PLATE, CARD PANEL
QC1-6206-000	11 - 6	CLIP, SHAFT L	QC1-9092-000	5 - 7	COVER, LOGIC BOARD ASS'Y
QC1-6207-000	11 - 3	CLIP, SHAFT R	QC1-9093-000	8 - 6	COVER, RELAY BOARD
QC1-6208-000	11 - 8	CAM, CARRIAGE SHAFT L	QC1-9101-000	8 - 8	SHEET, CHASSIS R
QC1-6209-000	11 - 5	CAM, CARRIAGE SHAFT R	QC1-9103-000	6 - 4	BUTTON, OPEN
QC1-6213-000	10 - 3	GEAR, INPUT CARRIAGE LIFT	QC1-9104-000	3 - 2	PANEL, CASSETTE FRONT
QC1-6216-000	14 - 1	CAM, SWING ARM LOCK	QC1-9108-000	3 - 6	COVER, FRONT R
QC1-6217-000	14 - 10	LEVER, SWING ARM LOCK	QC1-9116-000	5 - 10	SHEET, CABLE HOLD
QC1-6225-000	14 - 17	GEAR, EJECT	QK1-0278-000	1 - 4	CORD, POWER
QC1-6226-000	14 - 5	SPRING, TORSION	QK1-0279-000	1 - 4	CORD, POWER
QC1-6227-000	14 - 13	BUSHING	QK1-0286-000	1 - 4	CORD, POWER
QC1-6229-000	14 - 14	FILM, TIMING SLIT DISK	QK1-1061-000	1 - 4	CORD, POWER
QC1-6230-000	14 - 15	BELT, PAPER FEED	QK1-1500-000	11 - 7	MOTOR, CARRIAGE
QC1-6232-000	14 - 3	SPRING, TENSION	QK1-1502-000	14 - 12	MOTOR, PAPER FEED
QC1-6272-000	12 - 2	ABSORBER, INK	QK1-2222-000	5 - 16	SCANNER UNIT
QC1-6306-000	11 - 4	RING, CARRIAGE SHAFT	QK1-2227-000	7 - 6	PICT BRIDGE HARNESS ASS'Y
QC1-6458-000	13 - 3	TUBE, WASTE INK	QK1-2228-000	2 - 1	POWER SUPPLY UNIT
QC1-6460-000	13 - 4	HOLDER, WASTE INK TUBE	QK1-2230-000	8 - 4	CABLE, PRINTER RELAY
QC1-6471-000	14 - 9	SPRING, TENSION	QK1-2234-000	7 - 7	CABLE, NCU
QC1-6499-000	13 - 2	COVER, WASTE INK TUBE	QK1-2235-000	7 - 1	SPEAKER ASS'Y
QC1-6523-000	11 - 11	SHAFT, CARRIAGE	QK1-2238-000	6 - 3	SOLENOID
QC1-6526-000	11 - 1	FILM, TIMING SLIT STRIP	QL2-0936-000	14 - 2	PR LIFT SHAFT ASS'Y
QC1-6573-000	3 - 12	DAMPER, DOOR	QL2-0938-000	11 - 12	IDLER PULLEY ASS'Y
QC1-6619-000	12 - 1	SPRING, TORSION	QL2-0950-000	14 - 16	FEED ROLLER ASS'Y
QC1-7454-000	7 - 12	ARM, RELEASE	QL2-1203-000	1 - 2	CDR TRAY ASS'Y
QC1-7996-000	4 - 11	PLATE, LOGO	QM2-2201-000	14 - 6	PRESSURE ROLLER ASS'Y
QC1-8013-000	10 - 1	COVER, PAPER FEED GUIDE	QM2-2232-000	14 - 8	CARRIAGE LIFT GEAR BASE UNIT
QC1-8416-000	4 - 14	SHEET, DOCUMENT PRESSURE	QM2-2265-000	14 - 4	PAPER GUIDE UNIT
QC1-8465-000	5 - 15	HOLDER, MIST COVER	QM2-2677-000	14 - 11	PE SENSOR UNIT
QC1-8478-000	5 - 14	COVER, MIST	QM2-2683-000	14 - 18	TIMING SENSOR UNIT
QC1-8589-000	3 - 8	GUIDE, CARD LED	QM2-3008-000	3 - 3	PAPER SUPPORT UNIT
QC1-8955-000	4 - 12	HINGE, ADF UNIT	QM2-3016-000	10 - 2	SHEET FEED UNIT
QC1-8998-000	4 - 5	COVER, DOCUMENT FEED	QM2-3032-000	13 - 1	PURGE UNIT
QC1-9011-000	4 - 13	BASE, DOCUMENT FEED	QM2-3025-020	11 - 10	CARRIAGE UNIT
QC1-9012-000	4 - 3	COVER, DOCUMENT FEED FRONT	QM2-3092-000	14 - 7	CARRIAGE LIFT SENSOR UNIT
QC1-9013-000	4 - 4	COVER, DOCUMENT FEED REAR	QM2-3124-000	10 - 7	SENSOR MULTI HARNESS ASS'Y
QC1-9014-000	4 - 8	COVER, DOCUMENT FEED RIGHT	QM2-3559-000	6 - 2	MAIN CASE UNIT
QC1-9015-000	4 - 10	COVER, DOCUMENT FEED CABLE	QM2-3560-000	9 - 2	BOTTOM CASE UNIT
QC1-9016-000	4 - 9	COVER, DOCUMENT FEED GRIP	QM2-3561-000	3 - 10	FRONT DOOR UNIT
QC1-9021-000	4 - 2	TRAY, DOCUMENT FEED	QM2-3565-000	12 - 3	PLATEN UNIT
QC1-9023-000	3 - 11	EMBLEM, PIXUS	QM2-3568-000	3 - 1	CASSETTE UNIT
QC1-9024-000	3 - 11	EMBLEM, PIXMA	QM2-3571-000	5 - 6	OPERATION PANEL UNIT
QC1-9032-000	5 - 5	COVER, PANEL L	QM2-3573-000	4 - 7	DOCUMENT FEED UNIT
QC1-9033-000	5 - 4	COVER, PANEL R	QM2-3574-000	4 - 1	DOCUMENT FEED TRAY UNIT
QC1-9048-000	5 - 1	COVER, LCD	QM2-3575-000	3 - 9	LEFT FRONT COVER UNIT
QC1-9050-000	5 - 2	WINDOW, LCD	QM2-3577-000	7 - 11	INNER COVER UNIT
QC1-9057-000	1 - 5	LABEL, PANEL	QM2-3586-000	5 - 11	SCANNER STOP ARM UNIT
QC1-9060-000	1 - 6	LABEL, DESTINATION	QM2-3588-000	5 - 3	LCD VIEWER UNIT
QC1-9062-000	5 - 5	COVER, PANEL L	QM2-3591-000	8 - 7	RELAY BOARD ASS'Y
QC1-9063-000	5 - 4	COVER, PANEL R	QM2-3592-000	7 - 9	NCU BOARD ASS'Y
QC1-9064-000	5 - 5	COVER, PANEL L	QM2-3593-000	7 - 4	CARD BOARD ASS'Y
QC1-9065-000	5 - 4	COVER, PANEL R	QM2-3659-000	8 - 3	LOGIC BOARD ASS'Y
QC1-9066-000	5 - 5	COVER, PANEL L	QM2-3663-000	7 - 5	MEMORY CARD HARNESS ASS'Y
QC1-9067-000	5 - 4	COVER, PANEL R	QM2-3664-000	8 - 2	SOLENOID RELAY HARNESS ASS'Y
QC1-9073-000	5 - 12	LOCK, ARM	QM2-3665-000	10 - 4	DC CONNECTOR ASS'Y

PART NUMBER	FIGURE & KEY No.		DESCRIPTION
QM2-3670-000	6 -	6	ADF HARNESS UNIT
QM2-3674-000	7 -	8	NCU HARNESS UNIT
QM2-3677-000	8 -	1	SPEARKER RELAY HARNESS UNIT
QM2-3678-000	10 -	6	MOTOR MULTI HARNESS ASS'Y
QM2-3685-000	10 -	5	ARG-PCI HARNESS UNIT
QY5-0153-000	9 -	1	ABSORBER KIT
QY6-0061-000	1 -	3	PRINT HEAD
QY9-0057-000	T -	1	LUBE, FLOIL KG107A, OIL
VS1-7165-002	6 -	5	CONNECTOR, CABLE
	7 -	2	
WE8-5266-000	5 -	8	CORE
	8 -	5	
	11 -	9	
WE8-5881-000	5 -	9	CORE, RING
	10 -	8	
WE8-6031-000	6 -	7	CORE, RING
WT3-5156-000	1 -	4	CORD, POWER
WT3-5182-000	1 -	4	CORD, POWER
XA9-0476-000	S -	1	SCREW, TP M3X8
XA9-1258-000	S -	2	SCREW, TAP, WASHER HEAD, M3X12
XA9-1437-000	S -	3	SCREW, BIND, M2.6X4(RED)
XB1-2200-505	S -	4	SCREW, MACH, TRUSS HEAD, M2X5
XB1-2300-405	S -	5	SCREW, MACH.BH, M3X4
XB1-2300-605	S -	6	SCREW, MACHINE, BINDING HEAD, M3x6
XB2-4300-605	S -	7	SCREW, W/WASHER, M3X6
XB2-7300-605	S -	8	SCREW, W/WASHER, M3X6
XB4-7300-605	S -	9	SCREW, BH M3X6
XB4-7300-805	S -	10	SCREW, TP, BH3X8
XB4-7301-005	S -	11	SCREW, M3x10
XB4-7401-005	S -	12	SCREW,TAPPIG,TRUSS HEAD,M4X10
XB6-7300-605	S -	13	SCREW, MACHINE, WASHER HEAD, M3x6