

# i965

# PARTS CATALOG

REVISION 0

|            |                |
|------------|----------------|
| 8538A001AA | 120V(US)       |
| 8538A002AA | 120V(CA)       |
| 8538A005AA | 220V-240V(EUR) |
| 8538A006AA | 220V-240V(DE)  |
| 8538A007AA | 220V-240V(FR)  |
| 8538A009AA | 220V-240V(AU)  |
| 8538A011AA | 220V-240V(GB)  |

# Canon

OCT. 2003

## QY8-31BV-000

**TONER**  
[www.tonerplus.com.ua](http://www.tonerplus.com.ua)

**1003 N 0.00-0**

**i965**

**PARTS  
CATALOG**

**Canon**

## Application

This manual has been issued by Canon Inc. for qualified person to learn technical theory, installation, maintenance, and repair of products. This manual covers all localities where the products are sold. For this reason, there may be information in this manual that does not apply to your locality.

## Corrections

This manual could include technical inaccuracies or typographical errors due to improvements or changes in the products. When changes occur in applicable products or in the content of this manual, Canon will release technical information as the need arises. In the event of major changes in the contents of this manual over a long or short period, Canon will issue a new editions of this manual.

The following paragraph does not apply to any countries where such provisions are inconsistent with local law.

## Trademarks

The product names and company names described in this manual are the registered trademarks of the individual companies.

## Copyright

This manual is copyrighted with all rights reserved. Under the copyright laws, this manual may not be copied, reproduced or translated into another language, in whole or in part, without the written consent of Canon Inc.

Copyright © 2003 by Canon Inc.

CANON INC.

Inkjet Products Quality Assurance Div.

16-1, Shimonoge 3-chome, Takatsu-ku, Kawasaki-shi,  
Kanagawa 213-8512, Japan

## DTP System

This manual was produced on an Apple® Power Macintosh® G3 personal computer and Canon LBP-2030PS laser beam printer.

Parts layout pictures were taken using Canon Digital Camera EOS D30, and edited with Adobe® Photoshop® 5.0.

KEY No. and Logotypes were created using

MACROMEDIA® FreeHand® 8J.

Documents and page layouts were created using

QuarkXpress® 3.3J.

Parts lists were created using Helix Technologies® Herix

Xpress® and converted to EPS files.

# I. CONTENTS

- A. ILLUSTRATION INDEX
- B. PARTS LAYOUT & PARTS LIST
- C. OPTIONS & CONSUMABLES
- D. SCREWS & WASHERS LIST
- E. TOOL
- F. NUMERICAL INDEX

## II. ABOUT THIS MANUAL

### A. ILLUSTRATION INDEX

For illustration index, the parts layout illustrations in this parts catalog are listed in abbreviated form in order of illustration number to identify the pages they appear on. To find an illustration of a part, see the ILLUSTRATION INDEX.

### B. PARTS LAYOUT & PARTS LIST

#### Parts layout illustration

##### a) Parts search

Find a part from the parts layout illustration and find its key number from the parts list to identify the part number and name. For screws, nuts, washers, lock washers, pins, spacers, see SCREWS & WASHERS LIST.

**Note:** If parts have the same or similar shape but different specifications, their key number is assigned to several part numbers and names in the parts list.

##### b) Parts replacement procedure

To replace parts, the parts layout illustrations have figure numbers according to the disassembly procedure of the product. The parts that require careful work are shown the illustration.

#### Parts list

##### a) FIGURE & KEY No.

The FIGURE & KEY No. column corresponds to the key numbers assigned to the parts in the parts layout illustration. It also corresponds to the part locations printed on the PC board.

##### b) PART NUMBER

The PART NUMBER column gives the part numbers corresponding to the key numbers. To order a part, indicate the part number clearly.

**Note:** Parts marked NPN are not service parts.

##### c) RANK

The service parts with N in the RANK column are order parts.

##### d) QTY

The QTY column gives the number of parts in the corresponding components layout illustration.

##### e) DESCRIPTION

The DESCRIPTION column gives the part names in English.

To order a part, indicate the part name, too.

### C. OPTIONS & CONSUMABLES

These are illustrations and a list of units that can be used as optional consumable equipments.

### D. SCREWS & WASHERS LIST

This is a list of screws, nuts, washers, lock washers, pins, and spacers. The QTY column does not give the number of parts used.

### E. TOOL LIST

This is a list of tools used for servicing products.

### F. NUMERICAL INDEX

All the parts listed in this parts catalog are arranged in order of part number. You can identify part locations and names from the NUMERICAL INDEX.



**This page intentionally left blank**

# A. ILLUSTRATION INDEX

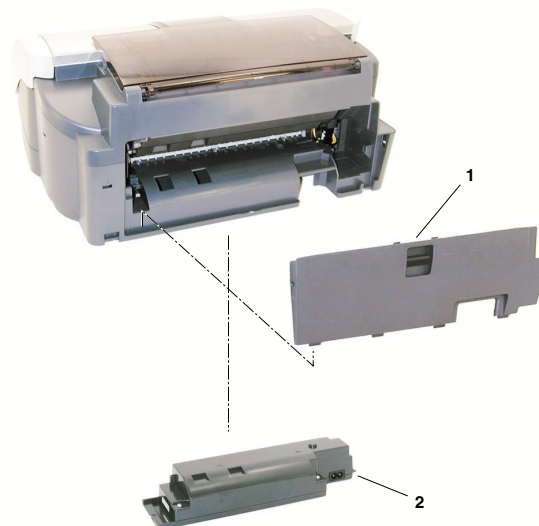
**FIGURE 1** PRINTER & PRINT HEAD

See Page  
B - 1



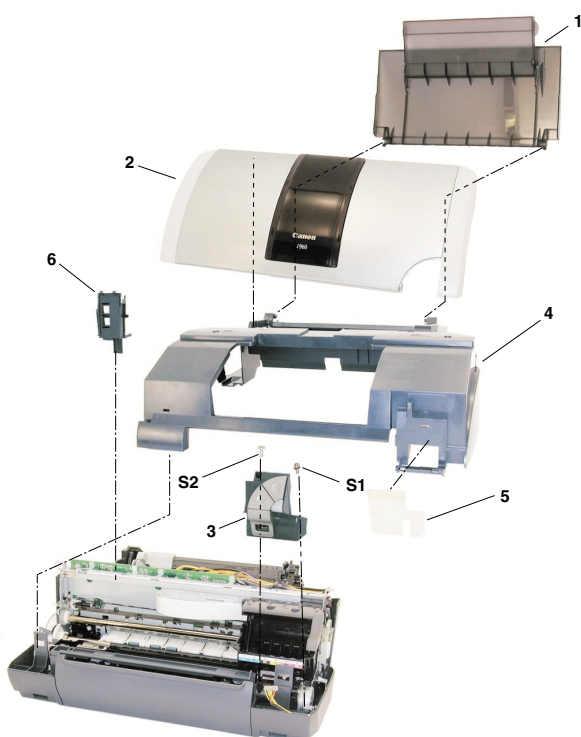
**FIGURE 2** AC ADAPTER

See Page  
B - 3



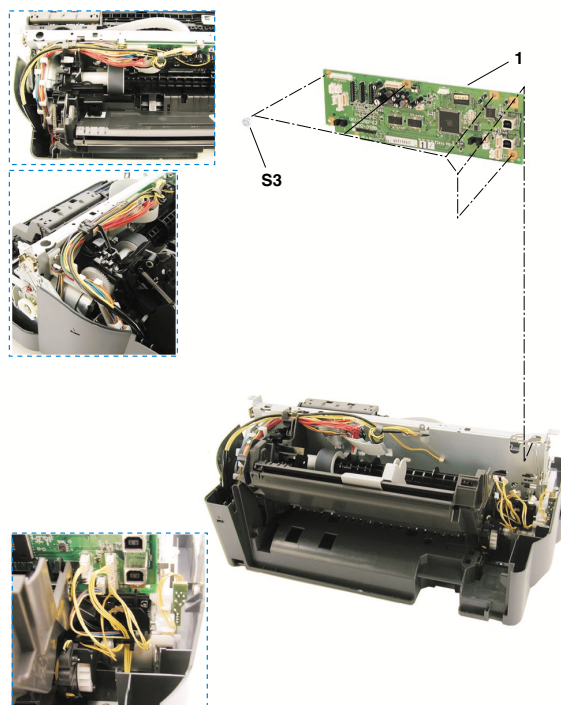
**FIGURE 3** OPERATION PANEL UNIT & UPPER COVER UNIT

See Page  
B - 5

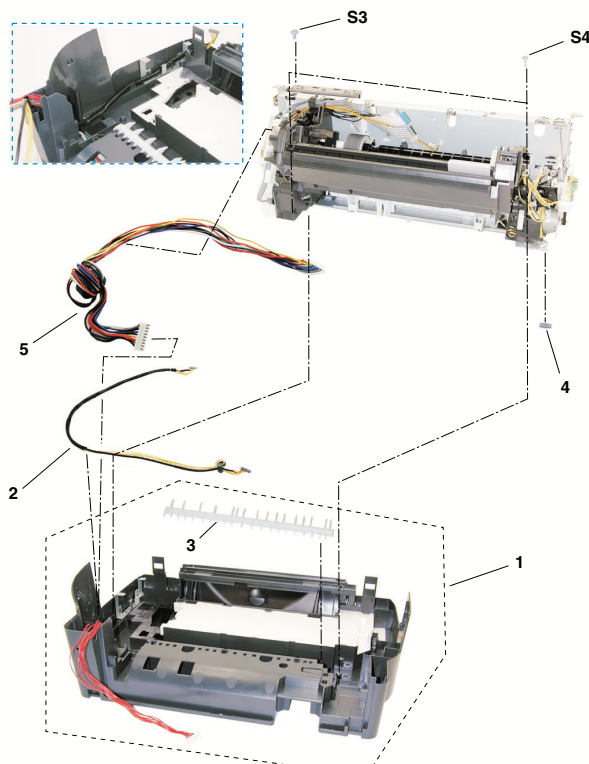
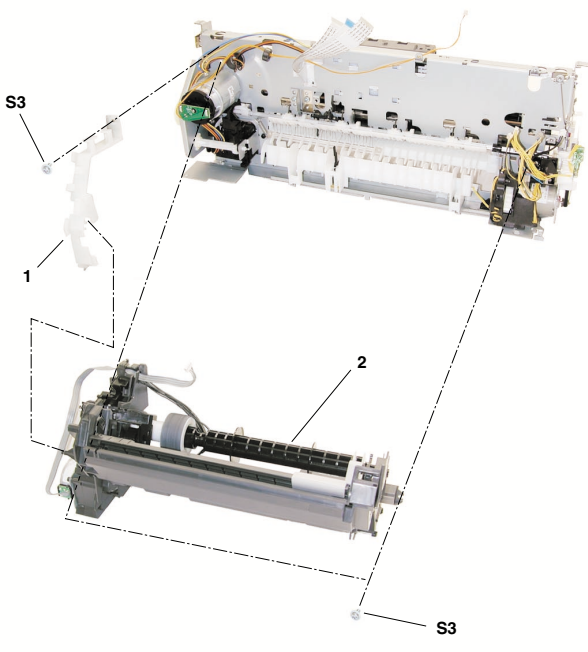
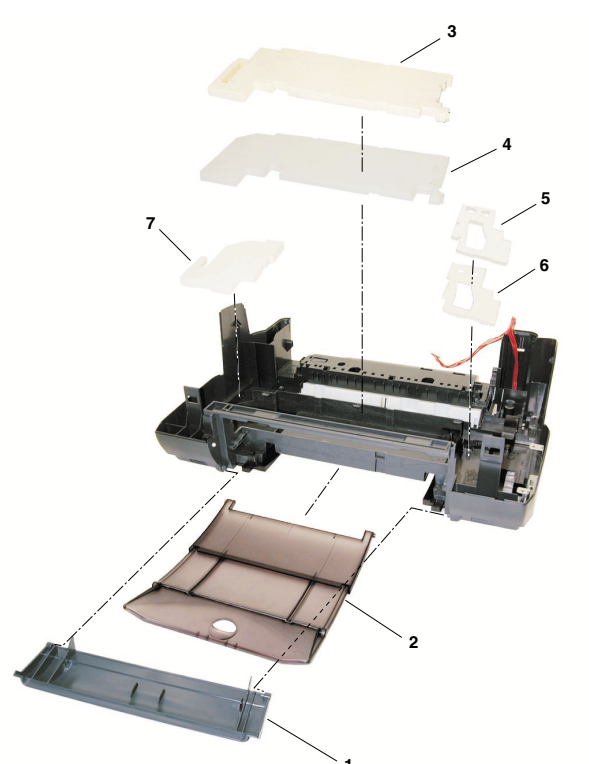
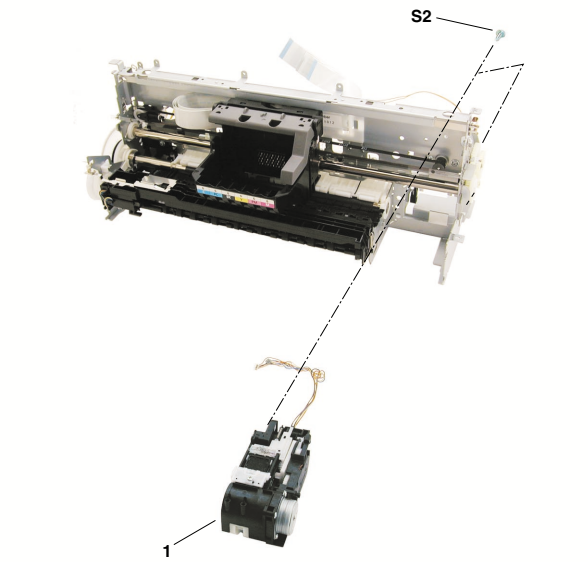


**FIGURE 4** LOGIC BOARD

See Page  
B - 7

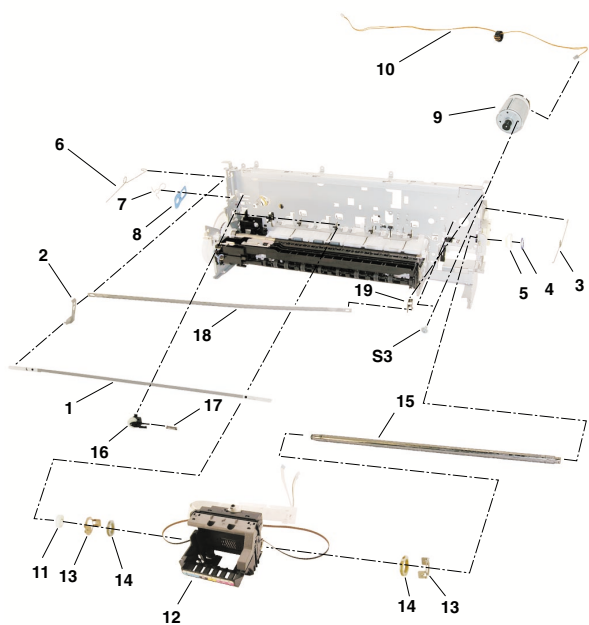




|   |                    |  |                    |
|---|--------------------|--|--------------------|
| <b>FIGURE 5</b> BOTTOM CASE UNIT  | See Page<br>B - 9  | <b>FIGURE 6</b> SHEET FEED UNIT  | See Page<br>B - 11 |
|   |                    |   |                    |
| <b>FIGURE 7</b> OUTPUT TRAY &<br>INK ABSORBER                                       | See Page<br>B - 13 | <b>FIGURE 8</b> PURGE UNIT   | See Page<br>B - 15 |
|  |                    |  |                    |

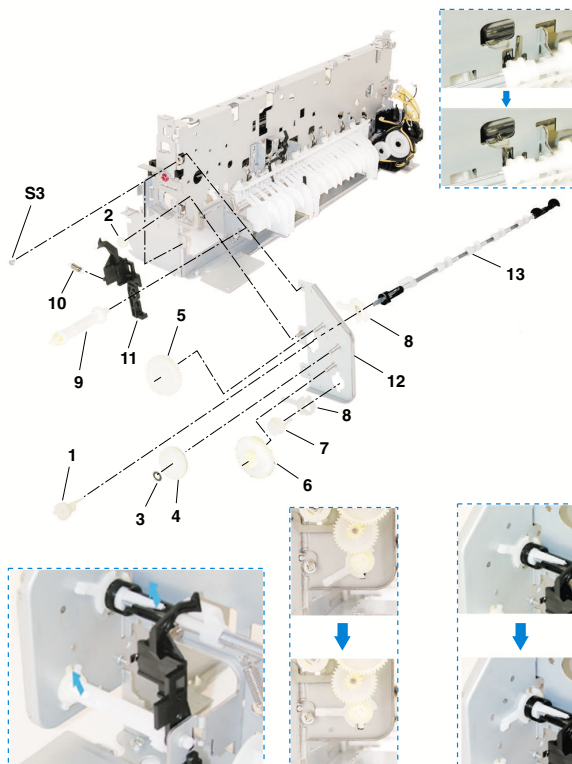
**FIGURE 9** CARRIAGE UNIT

See Page  
B - 17



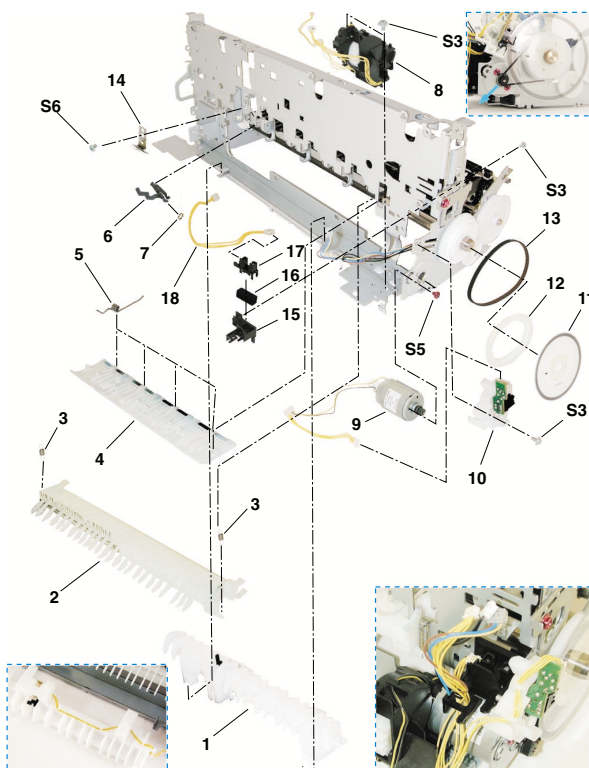
**FIGURE 10** CARRIAGE LIFT PART

See Page  
B - 19



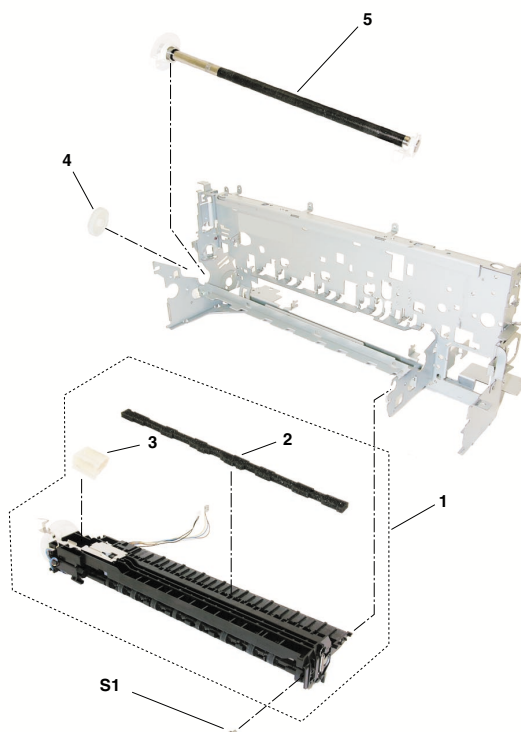
**FIGURE 11** PAPER FEED PART

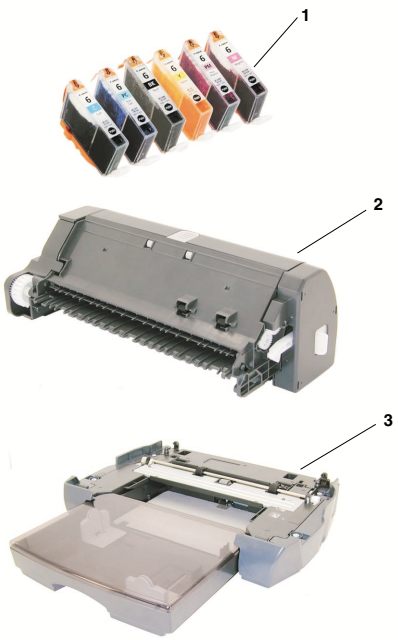
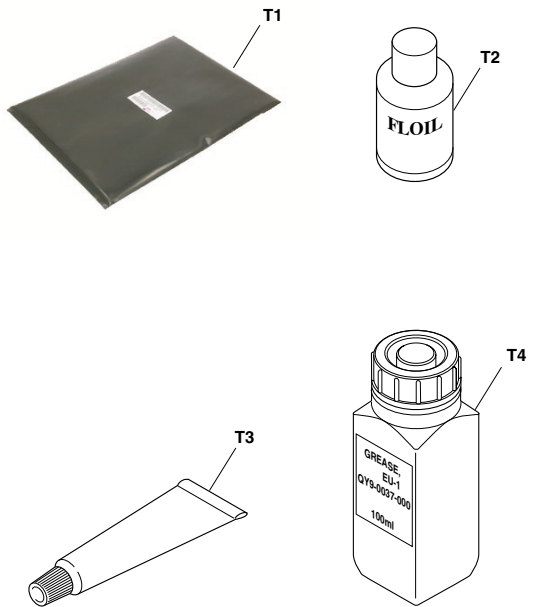
See Page  
B - 21



**FIGURE 12** PLATEN & FEED ROLLER

See Page  
B - 23



| <b>FIGURE 13</b> OPTION & CONSUMABLES  | See Page<br>C - 1 | <b>FIGURE 14</b> TOOL   | See Page<br>E - 1 |
|--|-------------------|---|-------------------|
|  |                   |  |                   |
|  |                   |   |                   |
|  |                   |   |                   |

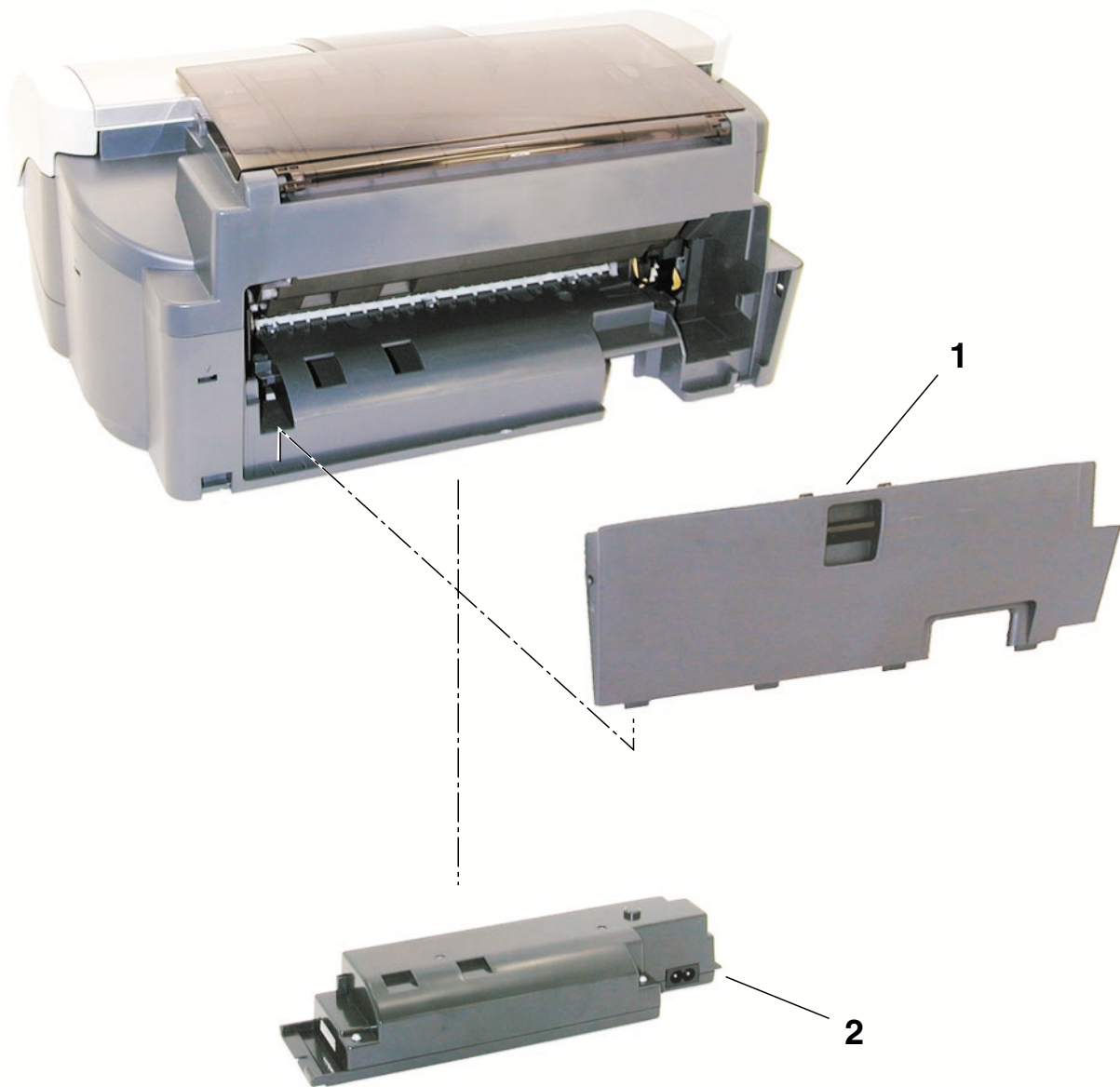
## B. PARTS LAYOUT & PARTS LIST

FIGURE 1 PRINTER & PRINT HEAD



| FIGURE<br>&<br>KEY NO. | PART NUMBER  | R<br>A<br>N<br>K | Q<br>T<br>Y | DESCRIPTION           | REMARKS           |
|------------------------|--------------|------------------|-------------|-----------------------|-------------------|
| 1- 1                   | QM2-0626-000 |                  | 1           | TRAY GUIDE UNIT       |                   |
| 2                      | QL2-0348-000 |                  | 1           | CDR TRAY ASS'Y        |                   |
| 3                      | QA4-1117-000 |                  | 1           | TRAY, CD SUB          |                   |
| 4                      | QH2-2725-000 |                  | 1           | CORD, POWER           | 100V-120V         |
|                        | QH2-2726-000 |                  | 1           | CORD, POWER           | 220V-240V         |
|                        | QH2-2727-000 |                  | 1           | CORD, POWER           | 220V-240V(AU)     |
|                        | WT3-5156-000 |                  | 1           | CORD, POWER           | 220V-240V(GB, HK) |
| 5                      | QY6-0043-000 |                  | 1           | PRINT HEAD            |                   |
| 6                      | QM2-0603-000 |                  | 1           | PHOTO PAPER TRAY UNIT |                   |
|                        |              |                  |             |                       |                   |
|                        |              |                  |             |                       |                   |
|                        |              |                  |             |                       |                   |
|                        |              |                  |             |                       |                   |
|                        |              |                  |             |                       |                   |
|                        |              |                  |             |                       |                   |
|                        |              |                  |             |                       |                   |
|                        |              |                  |             |                       |                   |

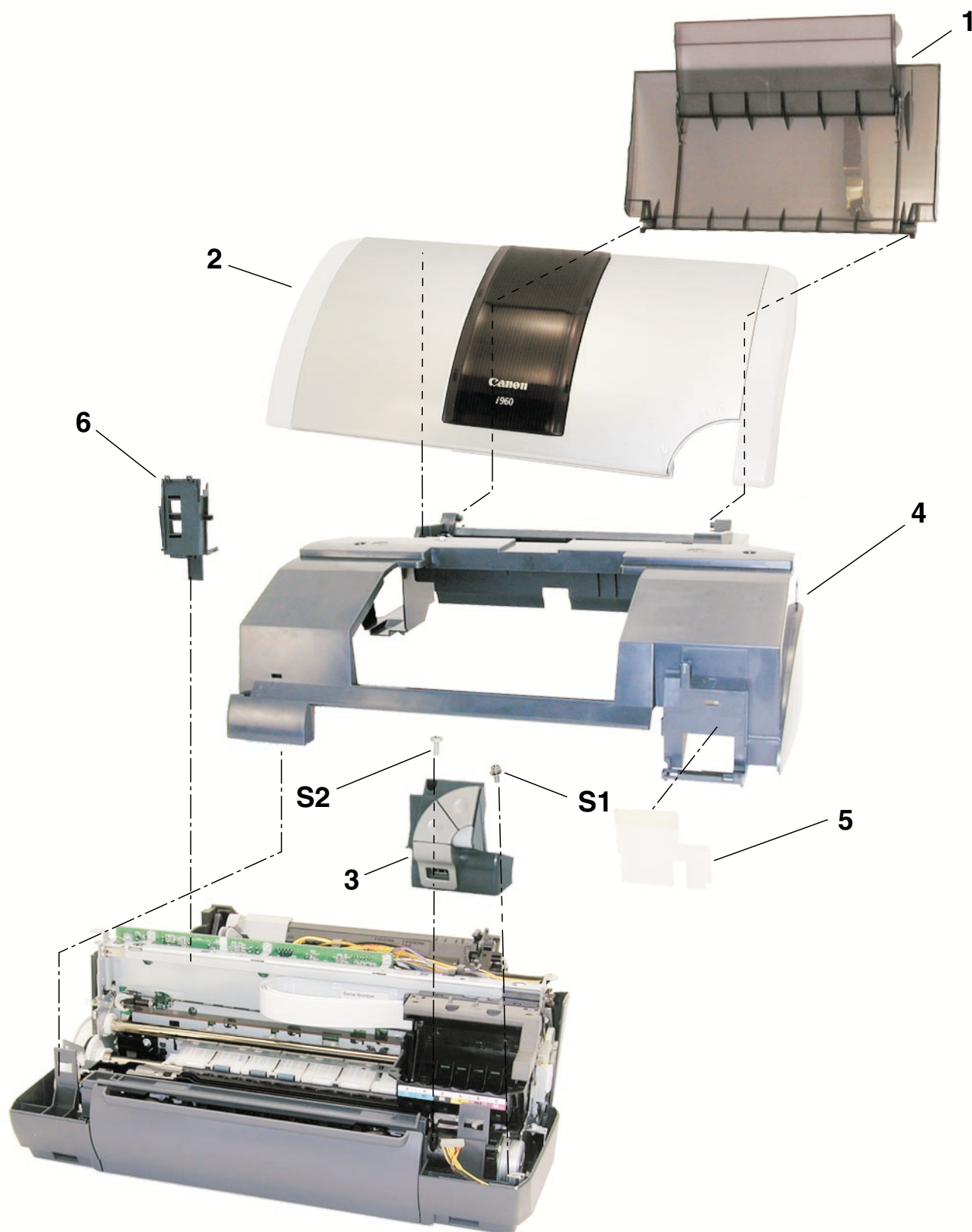
**FIGURE 2** AC ADAPTER





| FIGURE<br>&<br>KEY NO. | PART NUMBER                                  | R<br>A<br>N<br>K | Q<br>T<br>Y | DESCRIPTION  | REMARKS |
|------------------------|--|------------------|-------------|--|---------|
| 2- 1<br>2              | QM2-0630-000<br>QK1-0289-000<br>QK1-0290-000 |                  | 1<br>1<br>1 | BSU COVER UNIT<br>AC ADAPTER: 100V-120V 50/60HZ<br>AC ADAPTER: 220V-240V 50/60HZ |         |
|                        |  |                  |             |  |         |
|                        |  |                  |             |  |         |
|                        |  |                  |             |  |         |
|                        |  |                  |             |  |         |
|                        |  |                  |             |  |         |
|                        |  |                  |             |  |         |
|                        |  |                  |             |  |         |
|                        |  |                  |             |  |         |
|                        |  |                  |             |  |         |

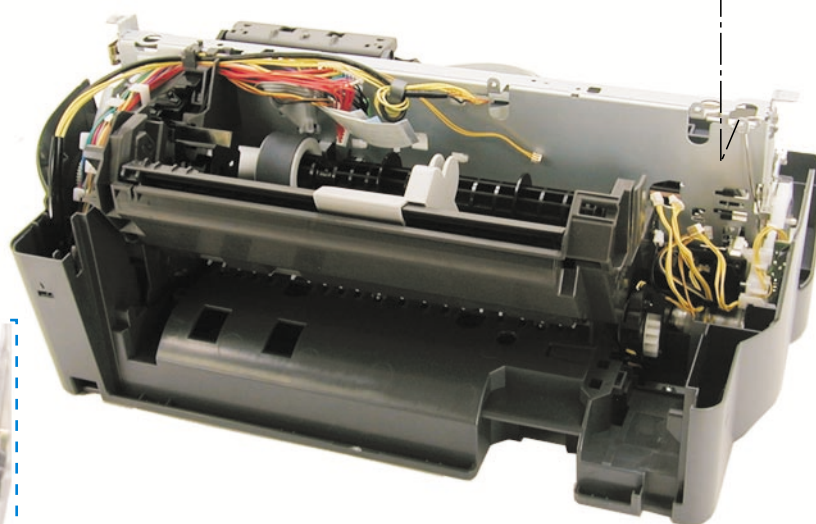
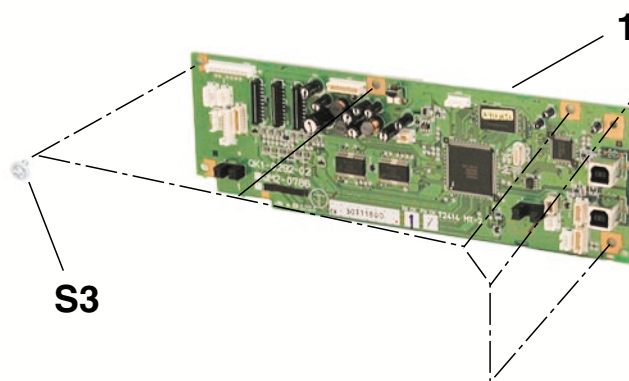
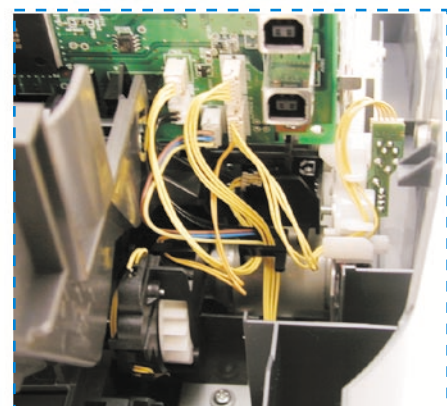
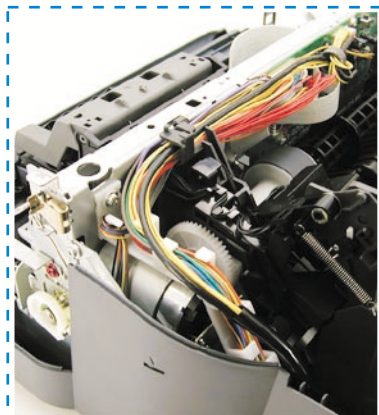
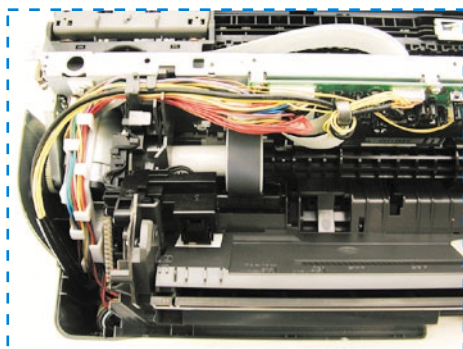
**FIGURE 3** OPERATION PANEL UNIT & UPPER COVER UNIT





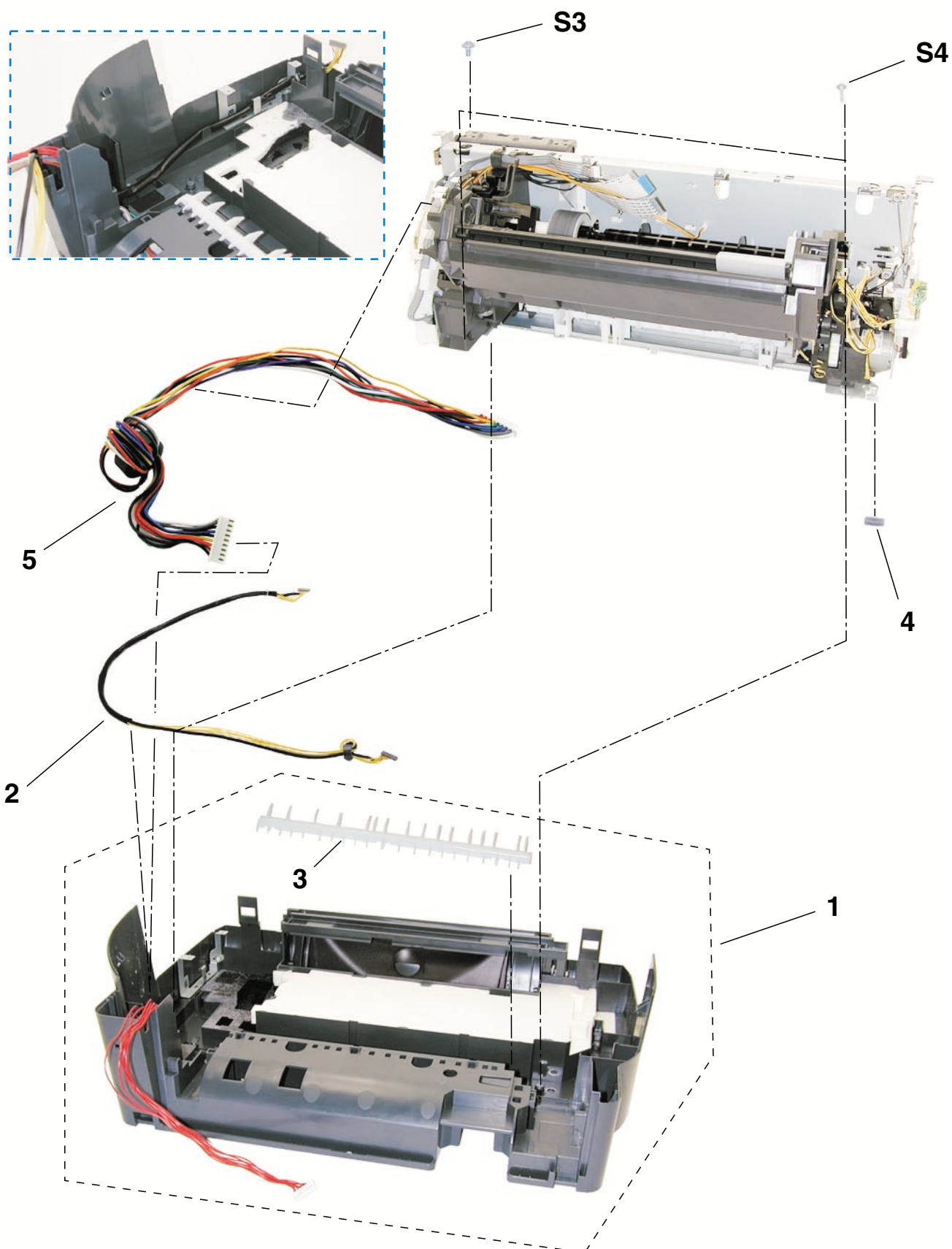
| FIGURE<br>&<br>KEY NO. | PART NUMBER  | R<br>A<br>N<br>K | Q<br>T<br>Y | DESCRIPTION           | REMARKS              |
|------------------------|--------------|------------------|-------------|-----------------------|----------------------|
| 3 - 1                  | QM2-0588-000 |                  | 1           | PAPER SUPPORT UNIT    | FOR i960<br>FOR i965 |
| 2                      | QM2-0731-000 |                  | 1           | ACCESS COVER ASS'Y    |                      |
|                        | QM2-0732-000 |                  | 1           | ACCESS COVER ASS'Y    |                      |
| 3                      | QM2-0585-000 |                  | 1           | OPERATION PANEL ASS'Y |                      |
| 4                      | QM2-0584-000 |                  | 1           | UPPER COVER UNIT      |                      |
| 5                      | QC1-2507-000 |                  | 1           | SHEET, MIST           |                      |
| 6                      | QC1-2755-000 |                  | 1           | COVER, I/F            |                      |
|                        |              |                  |             |                       |                      |
|                        |              |                  |             |                       |                      |
|                        |              |                  |             |                       |                      |
|                        |              |                  |             |                       |                      |
|                        |              |                  |             |                       |                      |
|                        |              |                  |             |                       |                      |
|                        |              |                  |             |                       |                      |
|                        |              |                  |             |                       |                      |
|                        |              |                  |             |                       |                      |

**FIGURE 4** LOGIC BOARD



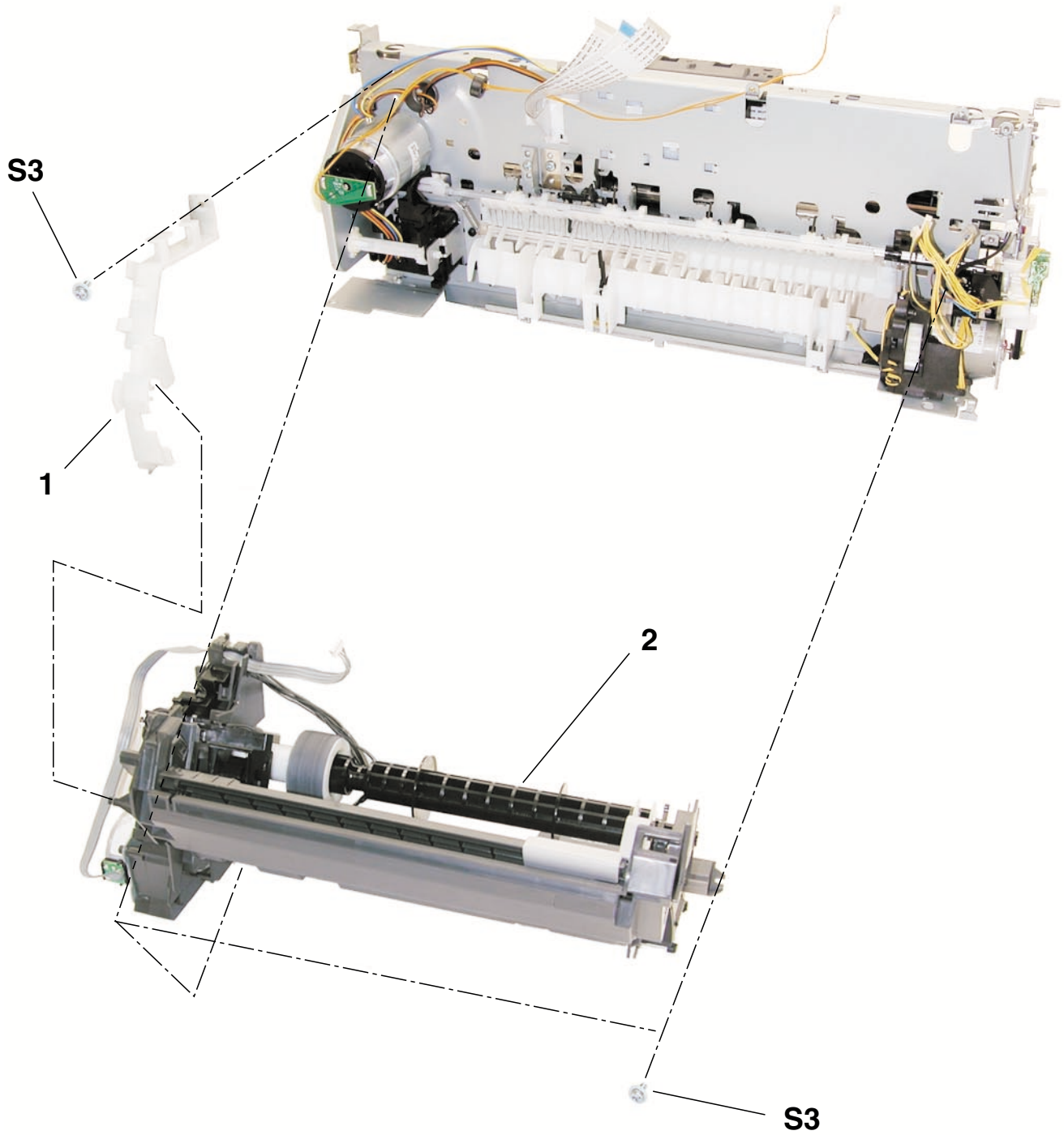


**FIGURE 5** BOTTOM CASE UNIT





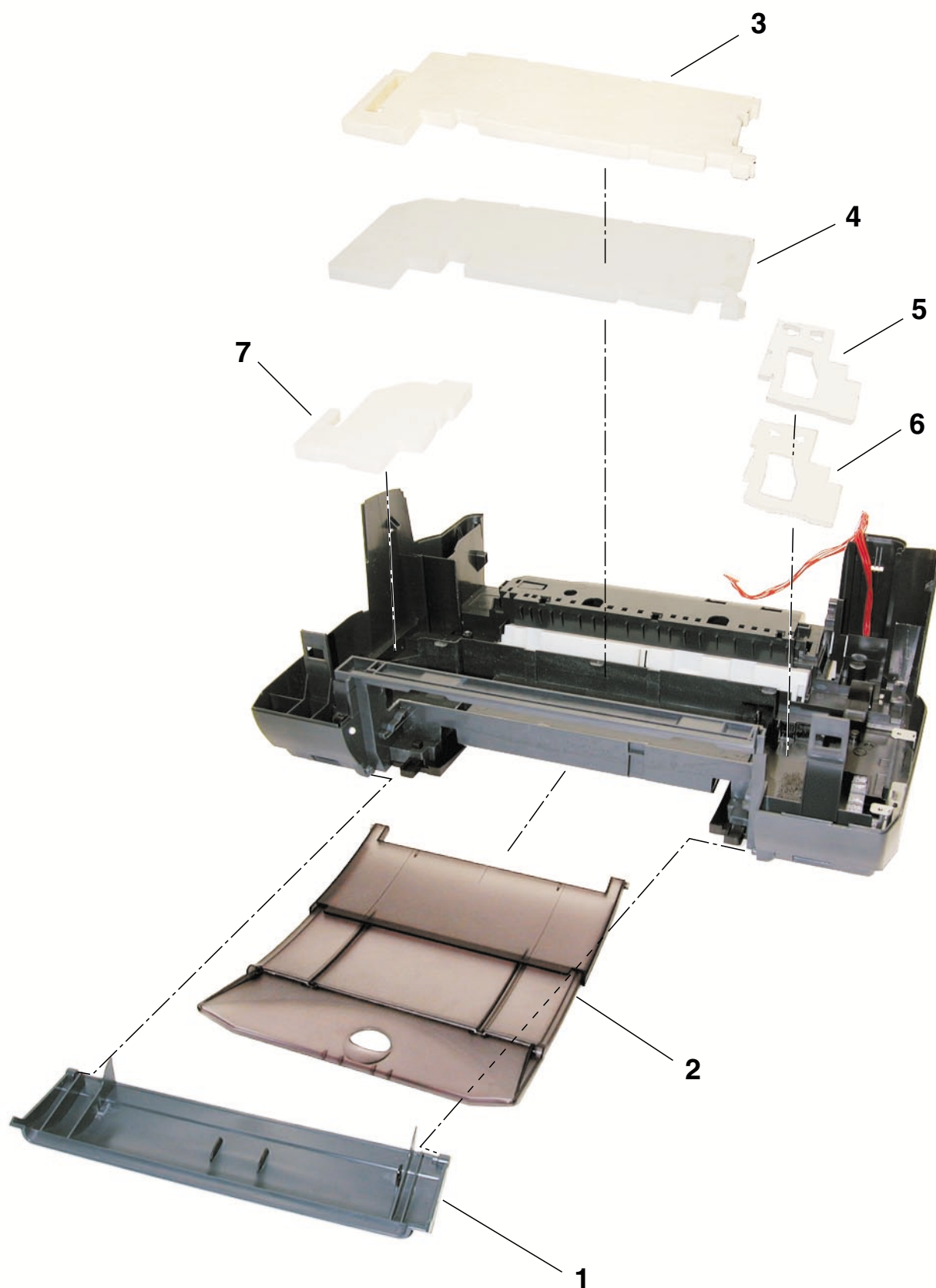
**FIGURE 6** SHEET FEED UNIT



| FIGURE<br>&<br>KEY NO. | PART NUMBER                  | R<br>A<br>N<br>K | Q<br>T<br>Y | DESCRIPTION                         | REMARKS         |
|------------------------|------------------------------|------------------|-------------|-------------------------------------|-----------------|
| 6 - 1<br>2             | QC1-2491-000<br>QM2-0589-000 |                  | 1<br>1      | GUIDE, HARNESS<br>SHEET FEEDER UNIT | W/ MEDIA SENSOR |
|                        |                              |                  |             |                                     |                 |
|                        |                              |                  |             |                                     |                 |
|                        |                              |                  |             |                                     |                 |
|                        |                              |                  |             |                                     |                 |
|                        |                              |                  |             |                                     |                 |
|                        |                              |                  |             |                                     |                 |
|                        |                              |                  |             |                                     |                 |
|                        |                              |                  |             |                                     |                 |
|                        |                              |                  |             |                                     |                 |



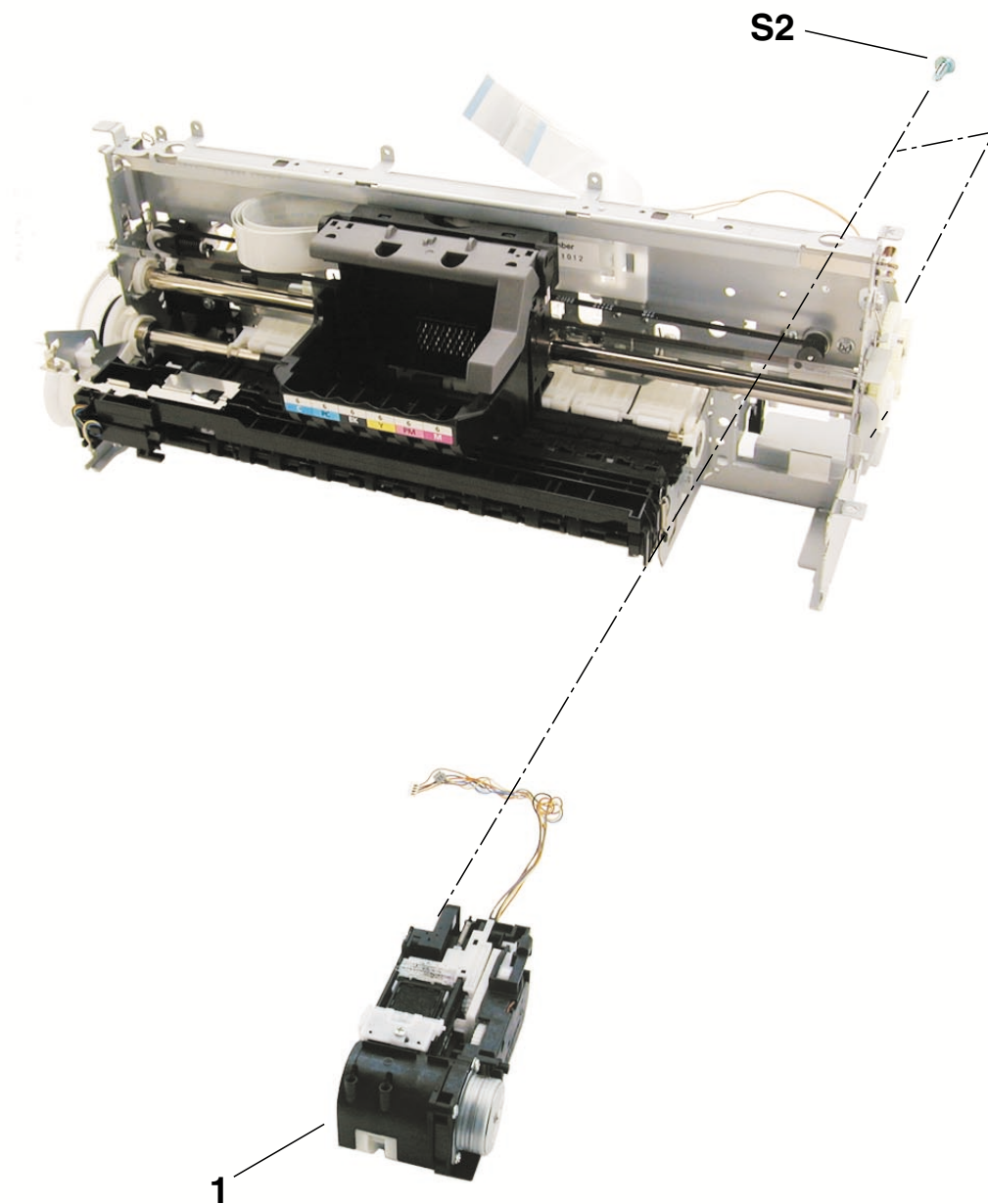
**FIGURE 7** OUTPUT TRAY & WASTE INK ABSORBER





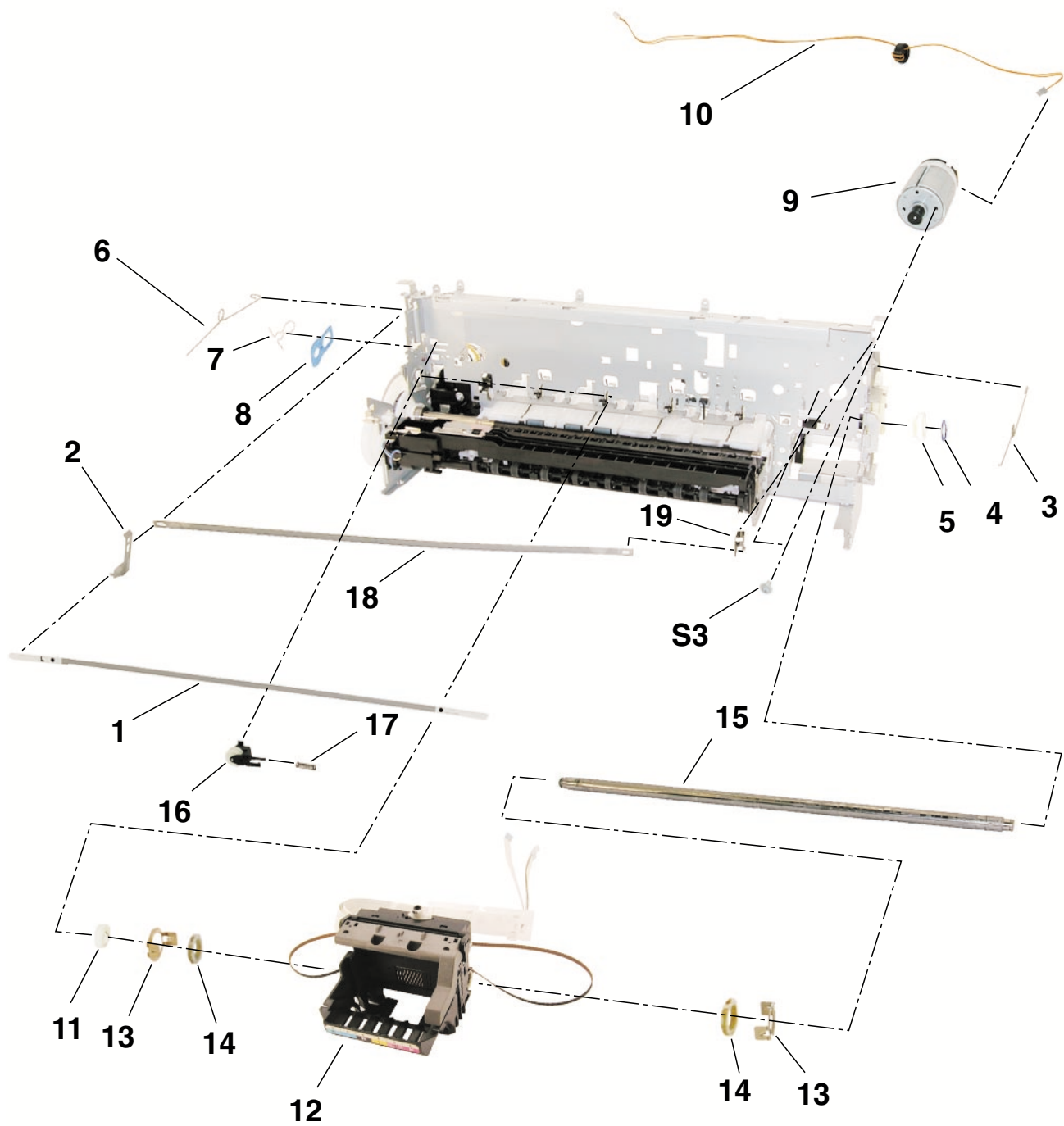
| FIGURE<br>&<br>KEY NO. | PART NUMBER  | R<br>A<br>N<br>K | Q<br>T<br>Y | DESCRIPTION         | REMARKS |
|------------------------|--------------|------------------|-------------|---------------------|---------|
| 7 - 1                  | QC1-2240-000 |                  | 1           | COVER, OUT PUT TRAY |         |
| 2                      | QM2-0587-000 |                  | 1           | OUT PUT TRAY UNIT   |         |
| 3                      | QC1-2235-000 |                  | 1           | ABSORBER, INK       |         |
| 4                      | QC1-2234-000 |                  | 1           | ABSORBER, INK       |         |
| 5                      | QC1-2233-000 |                  | 1           | ABSORBER, INK       |         |
| 6                      | QC1-2232-000 |                  | 1           | ABSORBER, INK       |         |
| 7                      | QC1-2236-000 |                  | 1           | ABSORBER, INK       |         |
|                        |              |                  |             |                     |         |
|                        |              |                  |             |                     |         |
|                        |              |                  |             |                     |         |
|                        |              |                  |             |                     |         |
|                        |              |                  |             |                     |         |
|                        |              |                  |             |                     |         |
|                        |              |                  |             |                     |         |
|                        |              |                  |             |                     |         |
|                        |              |                  |             |                     |         |

**FIGURE 8** PURGE UNIT



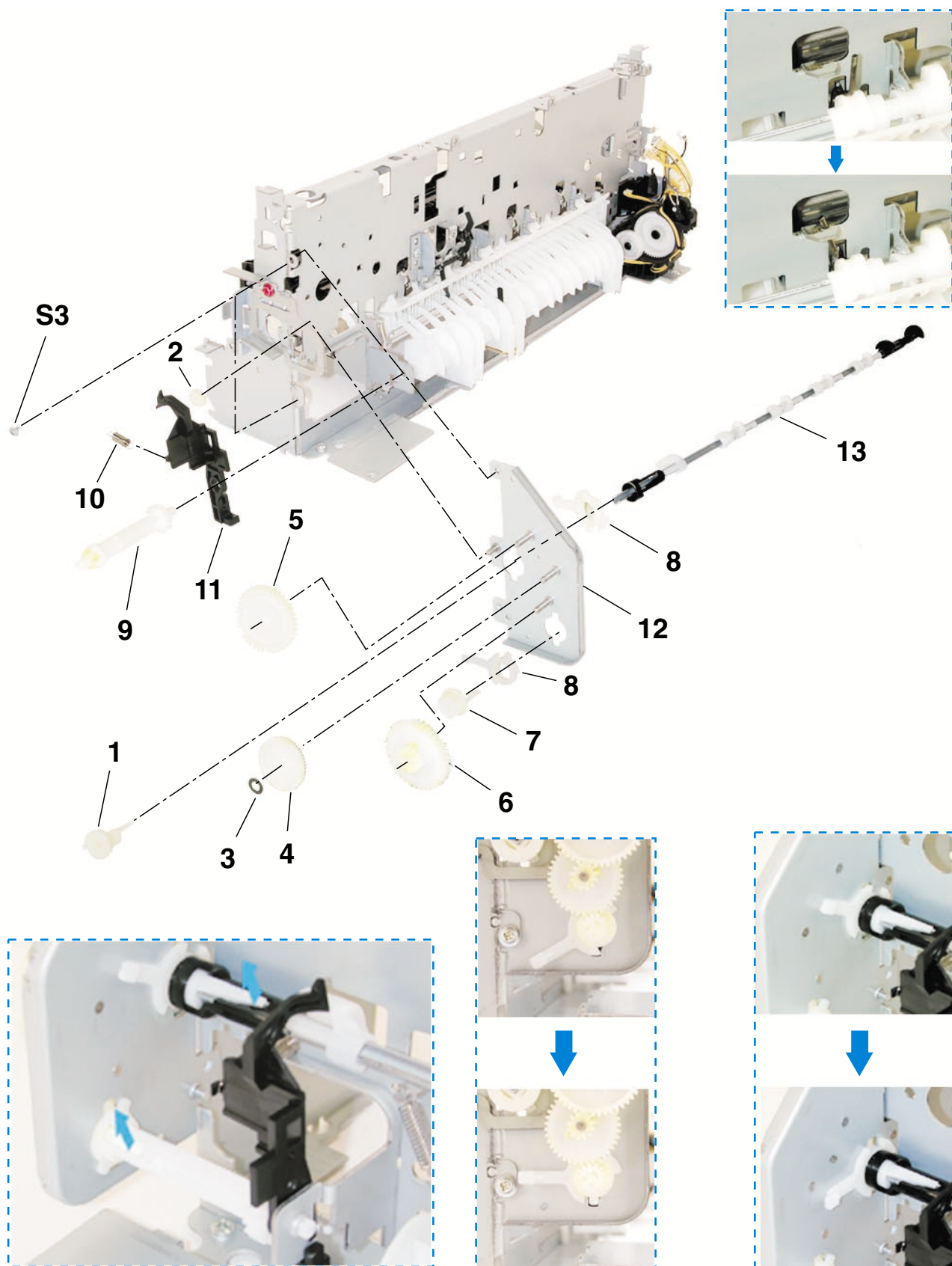
| FIGURE<br>&<br>KEY NO. | PART NUMBER  | R<br>A<br>N<br>K | Q<br>T<br>Y | DESCRIPTION | REMARKS |
|------------------------|--------------|------------------|-------------|-------------|---------|
| 8 - 1                  | QM2-0730-000 |                  | 1           | PURGE UNIT  |         |
|                        |              |                  |             |             |         |
|                        |              |                  |             |             |         |
|                        |              |                  |             |             |         |
|                        |              |                  |             |             |         |
|                        |              |                  |             |             |         |
|                        |              |                  |             |             |         |
|                        |              |                  |             |             |         |
|                        |              |                  |             |             |         |
|                        |              |                  |             |             |         |

**FIGURE 9** CARRIAGE UNIT



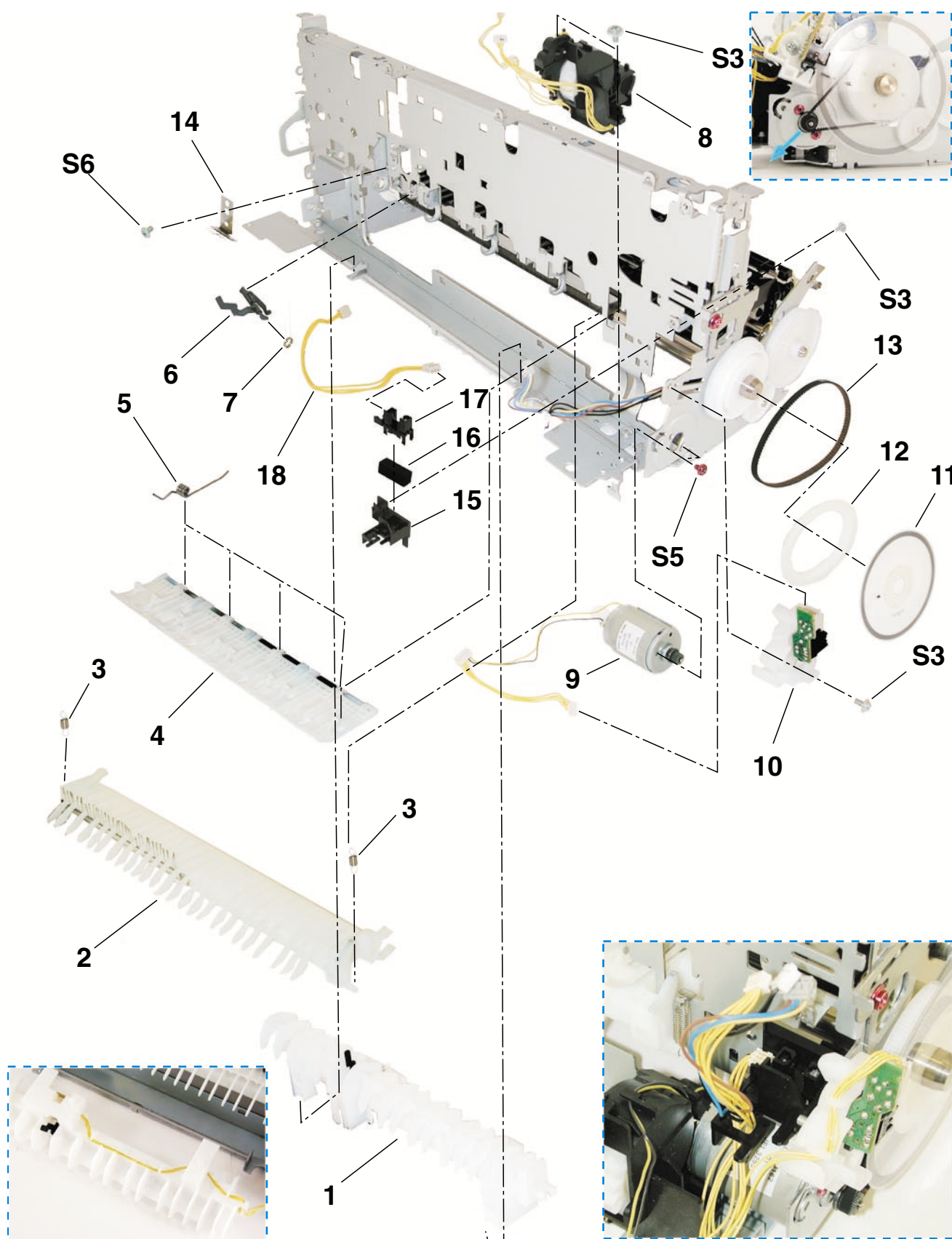
| FIGURE<br>&<br>KEY NO. | PART NUMBER  | R<br>A<br>N<br>K | Q<br>T<br>Y | DESCRIPTION                  | REMARKS |
|------------------------|--------------|------------------|-------------|------------------------------|---------|
| 9 - 1                  | QA4-1053-000 |                  | 1           | FILM, TIMING SLIT STRIP      |         |
| 2                      | QA4-0990-000 |                  | 1           | SPRING, LEAF                 |         |
| 3                      | QC1-2285-000 |                  | 1           | CLIP, SHAFT R                |         |
| 4                      | QC1-2289-000 |                  | 1           | RING, CARRIAGE SHAFT         |         |
| 5                      | QC1-2299-000 |                  | 1           | CAM, CARRIAGE SHAFT R        |         |
| 6                      | QC1-2284-000 |                  | 1           | CLIP, SHAFT L                |         |
| 7                      | QC1-2510-000 |                  | 1           | CLIP, CARRIAGE SHAFT         |         |
| 8                      | QC1-2288-000 |                  | 1           | PLATE, CARRIAGE SHAFT        |         |
| 9                      | QK1-0175-000 |                  | 1           | MOTOR, CARRIAGE              |         |
| 10                     | QM2-1129-000 |                  | 1           | CARRIAGE MOTOR HARNESS ASS'Y |         |
| 11                     | QC1-2300-000 |                  | 1           | CAM, CARRIAGE SHAFT L        |         |
| 12                     | QM2-0729-000 |                  | 1           | CARRIAGE UNIT                |         |
| 13                     | QA4-0723-000 | N                | 2           | HOLDER, GREASE PAD           |         |
| 14                     | QA4-0721-000 |                  | 2           | PAD, GREASE                  |         |
| 15                     | QC1-2759-000 |                  | 1           | SHAFT, CARRIAGE              |         |
| 16                     | QF4-0153-000 |                  | 1           | IDLER ROLLER ASS'Y           |         |
| 17                     | QS4-2112-000 |                  | 1           | SPRING, COIL                 |         |
| 18                     | QA4-0987-000 |                  | 1           | PLATE, CARRIAGE SLIDE        |         |
| 19                     | QA4-0988-000 |                  | 1           | SPRING, LEAF                 |         |
|                        |              |                  |             |                              |         |
|                        |              |                  |             |                              |         |
|                        |              |                  |             |                              |         |
|                        |              |                  |             |                              |         |
|                        |              |                  |             |                              |         |

**FIGURE 10** CARRIAGE LIFT PART



| FIGURE<br>&<br>KEY NO. | PART NUMBER  | R<br>A<br>N<br>K | Q<br>T<br>Y | DESCRIPTION             | REMARKS |
|------------------------|--------------|------------------|-------------|-------------------------|---------|
| 10 - 1                 | QC1-2297-000 |                  | 1           | GEAR, LIFT SHAFT        |         |
| 2                      | QC1-2298-000 |                  | 1           | GEAR, CARRIAGE INPUT    |         |
| 3                      | QA4-1177-000 |                  | 1           | RING, LIFT GEAR         |         |
| 4                      | QC1-2295-000 |                  | 1           | GEAR, LIFT TRANSMISSION |         |
| 5                      | QC1-2296-000 |                  | 1           | GEAR, LIFT TRANSMISSION |         |
| 6                      | QC1-2294-000 |                  | 1           | GEAR, LIFT TRANSMISSION |         |
| 7                      | QC1-2293-000 |                  | 1           | GEAR, LIFT INPUT        |         |
| 8                      | QC1-2301-000 |                  | 2           | BUSHING                 |         |
| 9                      | QC1-2304-000 |                  | 1           | SHAFT, LIFT INPUT GEAR  |         |
| 10                     | QC1-2303-000 |                  | 1           | SPRING, HOOK END COIL   |         |
| 11                     | QC1-2302-000 | N                | 1           | LOCK, LIFT SHAFT        |         |
| 12                     | QL2-0340-000 |                  | 1           | LIFT BASE ASS'Y         |         |
| 13                     | QM2-0593-000 |                  | 1           | LIFT CAM SHAFT UNIT     |         |
|                        |              |                  |             |                         |         |
|                        |              |                  |             |                         |         |
|                        |              |                  |             |                         |         |
|                        |              |                  |             |                         |         |
|                        |              |                  |             |                         |         |
|                        |              |                  |             |                         |         |
|                        |              |                  |             |                         |         |

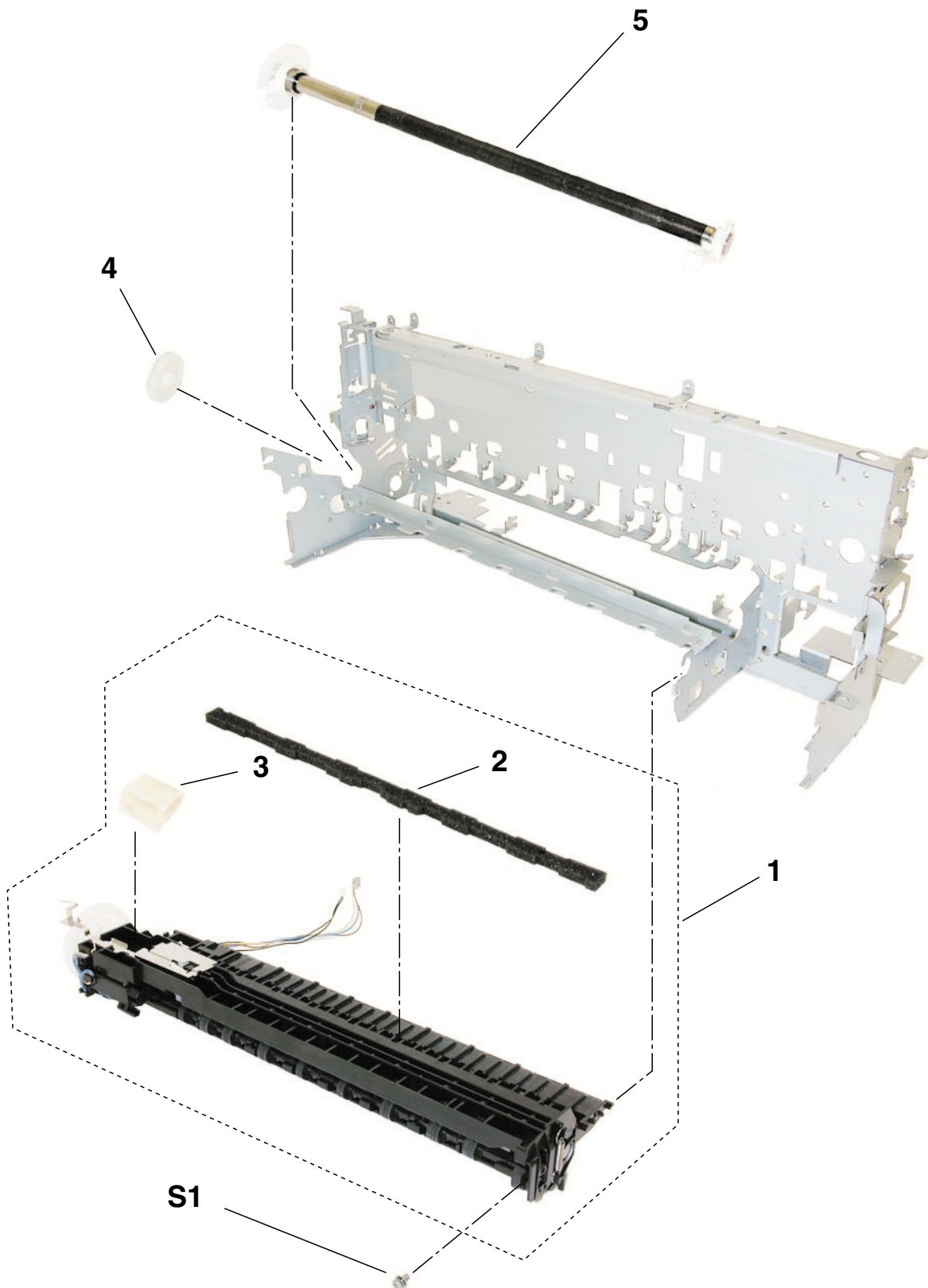
**FIGURE 11 PAPER FEED PART**





| FIGURE<br>&<br>KEY NO. | PART NUMBER  | R<br>A<br>N<br>K | Q<br>T<br>Y | DESCRIPTION                    | REMARKS                             |
|------------------------|--------------|------------------|-------------|--------------------------------|-------------------------------------|
| 11- 1                  | QM2-0598-000 |                  | 1           | U-TURN INNER GUIDE ASS'Y       | W/ CDR PRINTING<br>W/O CDR PRINTING |
| 2                      | QL2-0389-000 |                  | 1           | PAPER GUIDE FLAPPER ASS'Y      |                                     |
| 3                      | QC1-2291-000 |                  | 2           | SPRING, HOOK END COIL          |                                     |
| 4                      | QM2-0597-000 |                  | 1           | PRESSURE ROLLER ASS'Y          |                                     |
|                        | QM2-0637-000 |                  | 1           | PRESSURE ROLLER ASS'Y          |                                     |
| 5                      | QC1-2527-000 |                  | 4           | SPRING, TORSION                |                                     |
| 6                      | QC1-2305-000 |                  | 1           | ARM, PAPER SENSOR              |                                     |
| 7                      | QC1-2306-000 |                  | 1           | SPRING, TORSION                |                                     |
| 8                      | QM2-0638-000 |                  | 1           | OPTION GEAR UNIT               |                                     |
| 9                      | QM2-0810-000 |                  | 1           | PAPER FEED MOTOR UNIT          |                                     |
| 10                     | QM2-0596-000 |                  | 1           | TIMING SENSOR UNIT             |                                     |
| 11                     | QC1-2511-000 |                  | 1           | FILM, TIMING SLIT DISK         |                                     |
| 12                     | QA4-1169-000 |                  | 1           | FLANGE, PULLEY                 |                                     |
| 13                     | QC1-2286-000 |                  | 1           | BELT, PAPER FEED               |                                     |
| 14                     | QC1-2308-000 |                  | 1           | STATIC ELIMINATOR              |                                     |
| 15                     | QC1-2292-000 |                  | 1           | BASE, LIFT SENSOR              |                                     |
| 16                     | QC1-2528-000 |                  | 1           | PAD                            |                                     |
| 17                     | WG8-5571-000 |                  | 1           | PHOTO INTERRUPTER: TLP1243(C8) |                                     |
| 18                     | QM2-0792-000 |                  | 1           | LIFT CAM HARNESS ASS'Y         |                                     |
|                        |              |                  |             |                                |                                     |
|                        |              |                  |             |                                |                                     |
|                        |              |                  |             |                                |                                     |
|                        |              |                  |             |                                |                                     |
|                        |              |                  |             |                                |                                     |

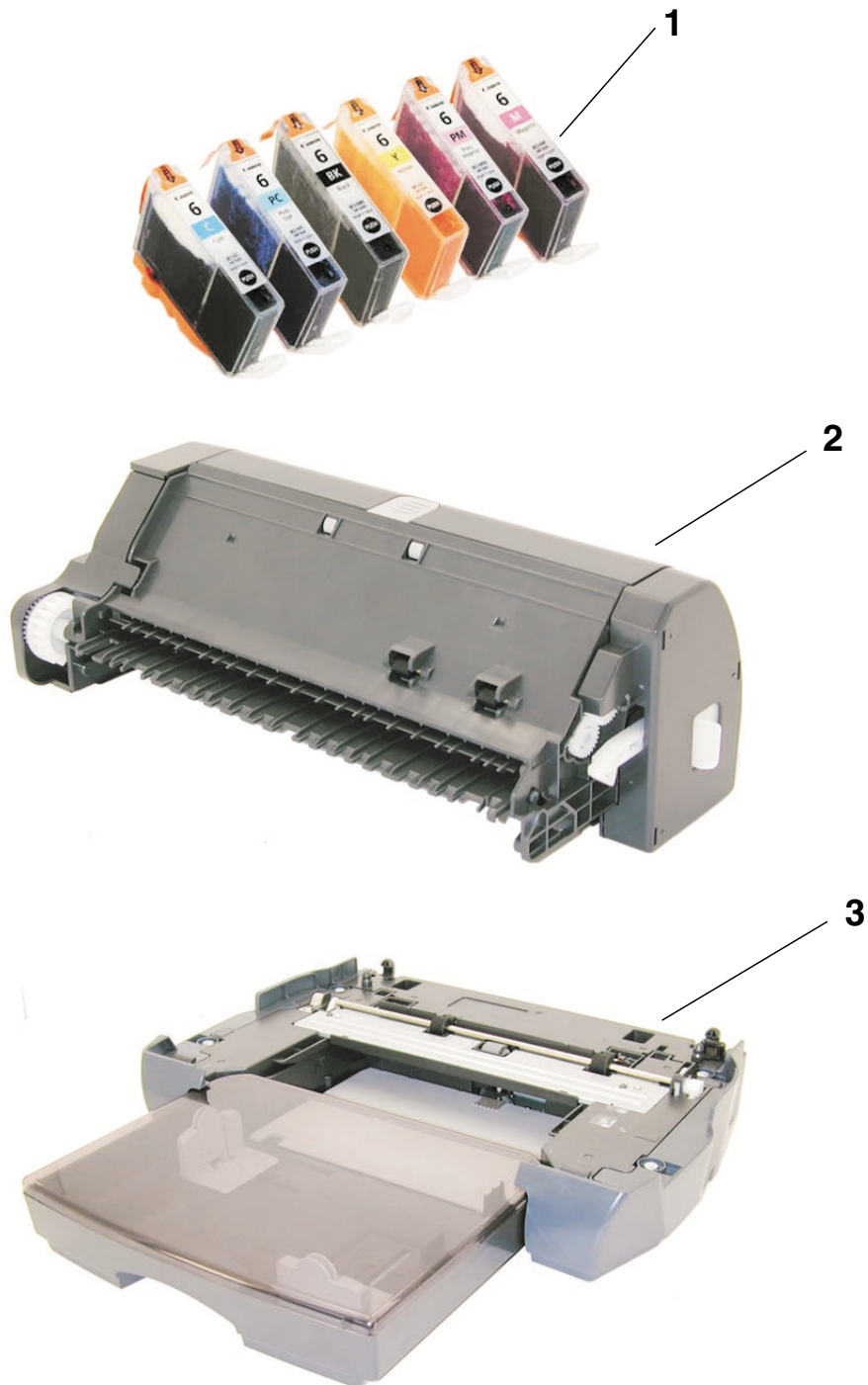
**FIGURE 12 PLATEN & FEED ROLLER**



| FIGURE<br>&<br>KEY NO. | PART NUMBER  | R<br>A<br>N<br>K | Q<br>T<br>Y | DESCRIPTION       | REMARKS          |
|------------------------|--------------|------------------|-------------|-------------------|------------------|
| 12- 1                  | QG4-0310-000 |                  | 1           | PLATEN UNIT       | W/ CDR PRINTING  |
|                        | QG4-0311-000 |                  | 1           | PLATEN UNIT       | W/O CDR PRINTING |
| 2                      | QA4-1194-000 |                  | 1           | ABSORBER, INK     |                  |
| 3                      | QA4-1195-000 |                  | 1           | ABSORBER, INK     |                  |
| 4                      | QA4-1162-000 |                  | 1           | GEAR, EJECT       |                  |
| 5                      | QF4-0173-000 | N                | 1           | FEED ROLLER ASS'Y |                  |
|                        |              |                  |             |                   |                  |
|                        |              |                  |             |                   |                  |
|                        |              |                  |             |                   |                  |
|                        |              |                  |             |                   |                  |
|                        |              |                  |             |                   |                  |
|                        |              |                  |             |                   |                  |
|                        |              |                  |             |                   |                  |
|                        |              |                  |             |                   |                  |
|                        |              |                  |             |                   |                  |

## C. OPTIONS & CONSUMABLES

FIGURE 13 OPTION & CONSUMABLES



| FIGURE<br>&<br>KEY NO. | PART NUMBER  | R<br>A<br>N<br>K | Q<br>T<br>Y | DESCRIPTION                    | REMARKS     |
|------------------------|--------------|------------------|-------------|--------------------------------|-------------|
| 13 - 1                 | NPN          |                  | 1           | BLACK INK TANK BCI-6BK         | CONSUMABLES |
|                        | NPN          |                  | 1           | CYAN INK TANK BCI-6C           | CONSUMABLES |
|                        | NPN          |                  | 1           | MAGENTA INK TANK BCI-6M        | CONSUMABLES |
|                        | NPN          |                  | 1           | YELLOW INK TANK BCI-6Y         | CONSUMABLES |
|                        | NPN          |                  | 1           | PHOTO CYAN INK TANK BCI-6PC    | CONSUMABLES |
| 2<br>3                 | NPN          |                  | 1           | PHOTO MAGENTA INK TANK BCI-6PM | CONSUMABLES |
|                        | Q70-4380-000 |                  | 1           | DUPLEX PRINTING UNIT           |             |
|                        | NPN          |                  | 1           | PAPER FEED CASSETTE            |             |
|                        |              |                  |             |                                |             |
|                        |              |                  |             |                                |             |
|                        |              |                  |             |                                |             |
|                        |              |                  |             |                                |             |
|                        |              |                  |             |                                |             |
|                        |              |                  |             |                                |             |
|                        |              |                  |             |                                |             |
|                        |              |                  |             |                                |             |

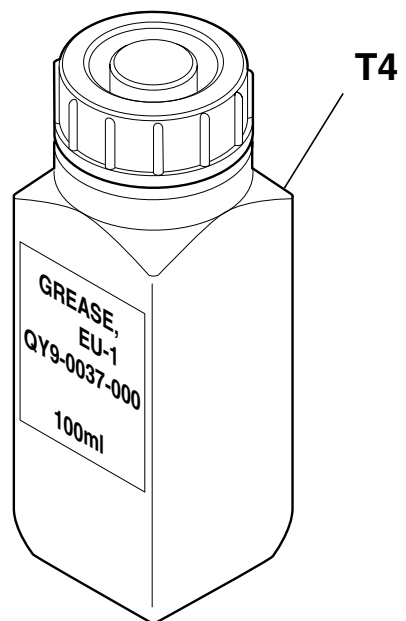
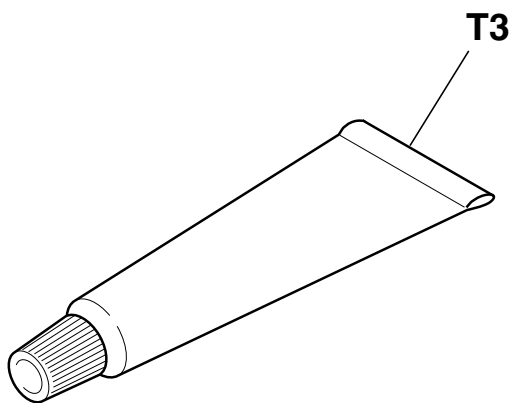
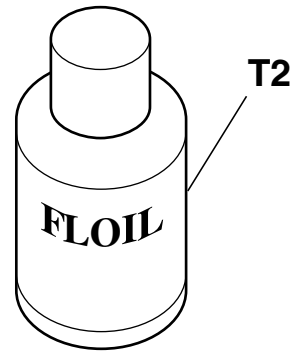
## D. SCREWS & WASHERS LIST

**TONER**  
www.tonerplus.com.ua

**This page intentionally left blank**

## E. TOOL

FIGURE 14 TOOL





| FIGURE<br>&<br>KEY NO. | PART NUMBER  | R<br>A<br>N<br>K | Q<br>T<br>Y | DESCRIPTION             | REMARKS |
|------------------------|--------------|------------------|-------------|-------------------------|---------|
| T - 1                  | QY9-0064-000 |                  | 1           | CALIBRATION MEDIA KIT   |         |
| 2                      | QY9-0057-000 |                  | 1           | LUBE, FLOIL KG107A, OIL |         |
| 3                      | CK-0562-000  |                  | 1           | GREASE, MOLYKOTE PG-641 |         |
| 4                      | QY9-0037-000 |                  | 1           | GREASE EU-1             |         |
|                        |              |                  |             |                         |         |
|                        |              |                  |             |                         |         |
|                        |              |                  |             |                         |         |
|                        |              |                  |             |                         |         |
|                        |              |                  |             |                         |         |
|                        |              |                  |             |                         |         |
|                        |              |                  |             |                         |         |
|                        |              |                  |             |                         |         |
|                        |              |                  |             |                         |         |
|                        |              |                  |             |                         |         |
|                        |              |                  |             |                         |         |

# F. NUMERICAL INDEX

| PART NUMBER  | FIGURE & KEY NO. | DESCRIPTION                  |
|--------------|------------------|------------------------------|
| CK-0562-000  | T - 3            | GREASE, MOLYKOTE PG-641      |
| Q70-4380-000 | 13 - 2           | DUPLEX PRINTING UNIT         |
| QA4-0721-000 | 9 - 14           | PAD, GREASE                  |
| QA4-0723-000 | 9 - 13           | HOLDER, GREASE PAD           |
| QA4-0987-000 | 9 - 18           | PLATE, CARRIAGE SLIDE        |
| QA4-0988-000 | 9 - 19           | SPRING, LEAF                 |
| QA4-0990-000 | 9 - 2            | SPRING, LEAF                 |
| QA4-1053-000 | 9 - 1            | FILM, TIMING SLIT STRIP      |
| QA4-1117-000 | 1 - 3            | TRAY, CD SUB                 |
| QA4-1162-000 | 12 - 4           | GEAR, EJECT                  |
| QA4-1169-000 | 11 - 12          | FLANGE, PULLEY               |
| QA4-1177-000 | 10 - 3           | RING, LIFT GEAR              |
| QA4-1194-000 | 12 - 2           | ABSORBER, INK                |
| QA4-1195-000 | 12 - 3           | ABSORBER, INK                |
| QC1-2230-000 | 5 - 3            | FLAPPER, PAPER FEED CASSETTE |
| QC1-2232-000 | 7 - 6            | ABSORBER, INK                |
| QC1-2233-000 | 7 - 5            | ABSORBER, INK                |
| QC1-2234-000 | 7 - 4            | ABSORBER, INK                |
| QC1-2235-000 | 7 - 3            | ABSORBER, INK                |
| QC1-2236-000 | 7 - 7            | ABSORBER, INK                |
| QC1-2240-000 | 7 - 1            | COVER, OUT PUT TRAY          |
| QC1-2284-000 | 9 - 6            | CLIP, SHAFT L                |
| QC1-2285-000 | 9 - 3            | CLIP, SHAFT R                |
| QC1-2286-000 | 11 - 13          | BELT, PAPER FEED             |
| QC1-2288-000 | 9 - 8            | PLATE, CARRIAGE SHAFT        |
| QC1-2289-000 | 9 - 4            | RING, CARRIAGE SHAFT         |
| QC1-2291-000 | 11 - 3           | SPRING, HOOK END COIL        |
| QC1-2292-000 | 11 - 15          | BASE, LIFT SENSOR            |
| QC1-2293-000 | 10 - 7           | GEAR, LIFT INPUT             |
| QC1-2294-000 | 10 - 6           | GEAR, LIFT TRANSMISSION      |
| QC1-2295-000 | 10 - 4           | GEAR, LIFT TRANSMISSION      |
| QC1-2296-000 | 10 - 5           | GEAR, LIFT TRANSMISSION      |
| QC1-2297-000 | 10 - 1           | GEAR, LIFT SHAFT             |
| QC1-2298-000 | 10 - 2           | GEAR, CARRIAGE INPUT         |
| QC1-2299-000 | 9 - 5            | CAM, CARRIAGE SHAFT R        |
| QC1-2300-000 | 9 - 11           | CAM, CARRIAGE SHAFT L        |
| QC1-2301-000 | 10 - 8           | BUSHING                      |
| QC1-2302-000 | 10 - 11          | LOCK, LIFT SHAFT             |
| QC1-2303-000 | 10 - 10          | SPRING, HOOK END COIL        |
| QC1-2304-000 | 10 - 9           | SHAFT, LIFT INPUT GEAR       |
| QC1-2305-000 | 11 - 6           | ARM, PAPER SENSOR            |
| QC1-2306-000 | 11 - 7           | SPRING, TORSION              |
| QC1-2308-000 | 11 - 14          | STATIC ELIMINATOR            |
| QC1-2491-000 | 6 - 1            | GUIDE, HARNESS               |
| QC1-2507-000 | 3 - 5            | SHEET, MIST                  |
| QC1-2509-000 | 5 - 4            | SPONGE, MIST                 |
| QC1-2510-000 | 9 - 7            | CLIP, CARRIAGE SHAFT         |
| QC1-2511-000 | 11 - 11          | FILM, TIMING SLIT DISK       |
| QC1-2527-000 | 11 - 5           | SPRING, TORSION              |
| QC1-2528-000 | 11 - 16          | PAD                          |
| QC1-2755-000 | 3 - 6            | COVER, I/F                   |
| QC1-2759-000 | 9 - 15           | SHAFT, CARRIAGE              |
| QF4-0153-000 | 9 - 16           | IDLER ROLLER ASS'Y           |
| QF4-0173-000 | 12 - 5           | FEED ROLLER ASS'Y            |
| QG4-0310-000 | 12 - 1           | PLATEN UNIT                  |
| QG4-0311-000 | 12 - 1           | PLATEN UNIT                  |
| QH2-2725-000 | 1 - 4            | CORD, POWER                  |
| QH2-2726-000 | 1 - 4            | CORD, POWER                  |

| PART NUMBER  | FIGURE & KEY NO. | DESCRIPTION                       |
|--------------|------------------|-----------------------------------|
| QH2-2727-000 | 1 - 4            | CORD, POWER                       |
| QK1-0175-000 | 9 - 9            | MOTOR, CARRIAGE                   |
| QK1-0289-000 | 2 - 2            | AC ADAPTER: 100V-120V 50/60HZ     |
| QK1-0290-000 | 2 - 2            | AC ADAPTER: 220V-240V 50/60HZ     |
| QL2-0340-000 | 10 - 12          | LIFT BASE ASS'Y                   |
| QL2-0348-000 | 1 - 2            | CDR TRAY ASS'Y                    |
| QL2-0389-000 | 11 - 2           | PAPER GUIDE FLAPPER ASS'Y         |
| QM2-0584-000 | 3 - 4            | UPPER COVER UNIT                  |
| QM2-0585-000 | 3 - 3            | OPERATION PANEL ASS'Y             |
| QM2-0587-000 | 7 - 2            | OUT PUT TRAY UNIT                 |
| QM2-0588-000 | 3 - 1            | PAPER SUPPORT UNIT                |
| QM2-0589-000 | 6 - 2            | SHEET FEEDER UNIT                 |
| QM2-0593-000 | 10 - 13          | LIFT CAM SHAFT UNIT               |
| QM2-0596-000 | 11 - 10          | TIMING SENSOR UNIT                |
| QM2-0597-000 | 11 - 4           | PRESSURE ROLLER ASS'Y             |
| QM2-0598-000 | 11 - 1           | U-TURN INNER GUIDE ASS'Y          |
| QM2-0603-000 | 1 - 6            | PHOTO PAPER TRAY UNIT             |
| QM2-0626-000 | 1 - 1            | TRAY GUIDE UNIT                   |
| QM2-0630-000 | 2 - 1            | BSU COVER UNIT                    |
| QM2-0637-000 | 11 - 4           | PRESSURE ROLLER ASS'Y             |
| QM2-0638-000 | 11 - 8           | OPTION GEAR UNIT                  |
| QM2-0727-000 | 5 - 1            | BOTTOM CASE UNIT                  |
| QM2-0729-000 | 9 - 12           | CARRIAGE UNIT                     |
| QM2-0730-000 | 8 - 1            | PURGE UNIT                        |
| QM2-0731-000 | 3 - 2            | ACCESS COVER ASS'Y                |
| QM2-0732-000 | 3 - 2            | ACCESS COVER ASS'Y                |
| QM2-0786-000 | 4 - 1            | LOGIC BOARD ASS'Y                 |
| QM2-0792-000 | 11 - 18          | LIFT CAM HARNESS ASS'Y            |
| QM2-0799-000 | 5 - 5            | DC CONNECTOR ASS'Y                |
| QM2-0810-000 | 11 - 9           | PAPER FEED MOTOR UNIT             |
| QM2-0812-000 | 4 - 1            | LOGIC BOARD ASS'Y                 |
| QM2-1129-000 | 9 - 10           | CARRIAGE MOTOR HARNESS ASS'Y      |
| QM2-1154-000 | 5 - 2            | PANEL HARNESS ASS'Y               |
| QS4-2112-000 | 9 - 17           | SPRING, COIL                      |
| QY6-0043-000 | 1 - 5            | PRINT HEAD                        |
| QY9-0037-000 | T - 4            | GREASE EU-1                       |
| QY9-0057-000 | T - 2            | LUBE, FLOIL KG107A, OIL           |
| QY9-0064-000 | T - 1            | CALIBRATION MEDIA KIT             |
| WG8-5571-000 | 11 - 17          | PHOTO INTERRUPTER: TLP1243(C8)    |
| WT3-5156-000 | 1 - 4            | CORD, POWER                       |
| XA9-1258-000 | S - 4            | SCREW, TAP, WASHER HEAD, M3X12    |
| XA9-1437-000 | S - 5            | SCREW, BIND, M2.6X4(RED)          |
| XB1-2300-405 | S - 6            | SCREW, MACH.BH, M3X4              |
| XB2-4300-605 | S - 7            | SCREW, W/WASHER, M3X6             |
| XB2-4300-805 | S - 1            | SCREW, M3                         |
| XB4-7300-805 | S - 2            | SCREW, TP, BH3X8                  |
| XB6-7300-605 | S - 3            | SCREW, MACHINE, WASHER HEAD, M3x6 |

**Canon**