

# PARTS CATALOG

**iPF786/785/781/780/765/  
760/755/750**

**Canon**

**Mar 19 2014**



## **PREFACE**

This Parts Catalog contains listings of parts used

Diagrams are provided with the listings to aid the service technician in identifying clearly, the item to be orderd.

Whenever ordering parts, consult this Parts Catalog for all of the information pertaining to each item. Be sure to include, in the Parts Request, the full item description, the item part number, and the quantity.

***COPYRIGHT (C) 1999 CANON INC.***

Use of this manual should be  
strictly supervised to avoid  
disclosure of confidential  
information.



# Contents

## NUMERICAL INDEX

iPF786/785/781/780/765/760/755/750(Numerical Index) ..... 1-1

## iPF786/785/781/780/765/760/755/750(Parts Catalog)

01	PRINTER & ACCESSORIES .....	2-1
02	COVERS .....	2-4
03	ROLL UNIT .....	2-7
04	ELECTRICAL PART .....	2-10
05	INK SUPPLY & PURGE UNIT .....	2-12
06	LINEAR SCALE .....	2-17
07	CARRIAGE UNIT .....	2-18
08	AIR FLOW FAN UNIT .....	2-21
09	CUTTER UNIT .....	2-23
10	PLATEN & GUIDE UNIT .....	2-25
11	PINCH ROLLER UNIT .....	2-27
12	FEED ROLLER UNIT .....	2-28
13	TOOL .....	2-30
R1	STAND UNIT ST-33 .....	2-31
R2	STAND UNIT ST-34 .....	2-33
ZZA	MECHANICAL STANDARD PARTS(HOW TO USE) .....	2-37
ZZB	MECHANICAL STANDARD PARTS(SCREWS) .....	2-38
ZZC	MECHANICAL STANDARD PARTS(BOLTS) .....	2-45
ZZD	MECHANICAL STANDARD PARTS(NUTS) .....	2-46
ZZE	MECHANICAL STANDARD PARTS(RETAINING RINGS) .....	2-47



# NUMERICAL INDEX

iPF786/785/781/780/765/760/755/750(Numerical Index)

PARTS NUMBER	FIGURE & KEY NO.	PARTS NUMBER	FIGURE & KEY NO.	PARTS NUMBER	FIGURE & KEY NO
AY3-4560-000	R2 - 8	QC2-6323-010	R2 - 3	QC3-1648-000	03 - 21
AY3-4573-000	R1 - 22	QC2-6633-000	02 - 25	QC3-1649-000	03 - 33
AY3-4574-000	R1 - 23	QC2-6793-000	01 - 24	QC3-1650-010	03 - 52
FB1-0733-000	01 - 3	QC2-9785-000	R1 - 9	QC3-1651-000	03 - 34
FC7-7556-000	04 - 9	QC2-9785-000	R2 - 29	QC3-1652-000	03 - 35
FC7-7556-000	05 - 15	QC3-0133-000	R1 - 15	QC3-1654-000	03 - 6
FH2-7092-020	01 - 23	QC3-0133-000	R2 - 35	QC3-1658-000	03 - 10
FK2-2416-000	04 - 3	QC3-1437-000	08 - 28	QC3-1659-000	03 - 11
FK2-6470-000	03 - 3	QC3-1442-000	R1 - 17	QC3-1661-000	03 - 2
FY9-6022-000	13 - 2	QC3-1445-000	08 - 8	QC3-1668-000	02 - 19
NPN	01 -	QC3-1455-000	R1 - 18	QC3-1672-000	03 - 9
NPN	01 - 1	QC3-1458-010	10 - 8	QC3-1683-000	02 - 16
NPN	01 - 2	QC3-1478-000	12 - 10	QC3-1684-000	07 - 9
NPN	01 - 2	QC3-1480-000	11 - 6	QC3-1686-010	07 - 10
NPN	01 - 2	QC3-1492-000	R1 - 4	QC3-1690-000	02 - 6
NPN	01 - 2	QC3-1511-000	07 - 29	QC3-1695-000	02 - 2
NPN	01 - 2	QC3-1514-000	07 - 28	QC3-1696-000	02 - 3
NPN	02 -	QC3-1515-000	07 - 27	QC3-1697-000	02 - 4
NPN	03 -	QC3-1516-000	07 - 32	QC3-1698-000	02 - 5
NPN	04 -	QC3-1519-000	07 - 33	QC3-1706-000	03 - 44
NPN	05 -	QC3-1524-000	07 - 21	QC3-1707-000	03 - 45
NPN	06 -	QC3-1525-000	07 - 36	QC3-1709-000	01 - 5
NPN	07 -	QC3-1526-000	07 - 23	QC3-1710-000	01 - 6
NPN	08 -	QC3-1527-000	07 - 35	QC3-1711-000	01 - 7
NPN	09 -	QC3-1531-000	07 - 4	QC3-1712-000	01 - 8
NPN	10 -	QC3-1532-000	07 - 5	QC3-1713-000	01 - 9
NPN	11 -	QC3-1533-000	07 - 6	QC3-1714-000	01 - 10
NPN	12 -	QC3-1534-010	07 - 7	QC3-1731-000	R1 - 8
NPN	13 -	QC3-1542-000	05 - 13	QC3-1731-000	R2 - 28
NPN	R1 -	QC3-1550-000	05 - 5	QC3-1732-000	R1 - 10
NPN	R2 -	QC3-1552-000	08 - 6	QC3-1732-000	R2 - 30
QC1-0008-000	07 - 16	QC3-1553-000	02 - 22	QC3-1739-000	R1 - 3
QC1-4850-000	09 - 5	QC3-1555-000	09 - 1	QC3-1742-000	02 - 9
QC1-5141-000	R1 - 13	QC3-1568-000	08 - 14	QC3-1746-000	R1 - 7
QC1-6912-000	01 - 14	QC3-1569-000	08 - 15	QC3-1746-000	R2 - 27
QC2-0682-000	05 - 1	QC3-1570-000	08 - 17	QC3-1747-000	R1 - 16
QC2-0687-000	05 - 2	QC3-1571-000	08 - 18	QC3-1747-000	R2 - 26
QC2-0689-000	05 - 3	QC3-1572-000	08 - 19	QC3-1751-000	07 - 1
QC2-0690-000	05 - 4	QC3-1574-000	08 - 20	QC3-1752-010	03 - 8
QC2-0729-000	05 - 18	QC3-1612-000	05 - 25	QC3-1759-000	03 - 14
QC2-0736-000	05 - 19	QC3-1615-000	05 - 33	QC3-1760-000	03 - 15
QC2-0739-000	05 - 23	QC3-1616-000	05 - 34	QC3-1766-000	09 - 2
QC2-0832-000	05 - 24	QC3-1617-000	05 - 35	QC3-1808-000	08 - 7
QC2-0957-000	12 - 8	QC3-1621-000	07 - 13	QC3-1818-000	03 - 23
QC2-0998-000	12 - 7	QC3-1631-000	03 - 16	QC3-1819-000	03 - 18
QC2-1281-000	05 - 20	QC3-1633-000	03 - 20	QC3-1829-000	02 - 18
QC2-4116-000	R1 - 12	QC3-1634-000	03 - 12	QC3-1850-000	R2 - 6
QC2-4116-000	R2 - 32	QC3-1635-000	03 - 5	QC3-1878-000	06 - 1
QC2-4346-000	R1 - 5	QC3-1636-000	03 - 30	QC3-1879-000	12 - 6
QC2-5993-000	R1 - 14	QC3-1638-000	03 - 17	QC3-1900-000	02 - 24
QC2-5993-000	R2 - 34	QC3-1639-000	03 - 13	QC3-1914-000	R1 - 1
QC2-6323-010	R1 - 19	QC3-1647-000	03 - 22	QC3-1914-000	R2 - 1

# NUMERICAL INDEX

iPF786/785/781/780/765/760/755/750(Numerical Index)

PARTS NUMBER	FIGURE & KEY NO.	PARTS NUMBER	FIGURE & KEY NO.	PARTS NUMBER	FIGURE & KEY NO
QC3-1916-010	10 - 6	QK1-0440-000	05 - 6	QM3-5805-000	08 - 12
QC3-1921-000	R2 - 33	QK1-0440-000	08 - 3	QM3-5808-000	08 - 2
QC3-1928-000	05 - 49	QK1-0550-000	05 - 26	QM3-5815-000	12 - 9
QC3-1929-000	05 - 50	QK1-0550-000	09 - 6	QM3-5816-020	11 - 7
QC3-1930-000	05 - 51	QK1-1392-000	01 - 19	QM3-5817-000	11 - 4
QC3-1931-000	05 - 52	QK1-1396-010	01 - 22	QM3-5819-010	04 - 1
QC3-1938-000	03 - 19	QK1-2081-000	03 - 37	QM3-5820-010	04 - 1
QC3-1939-000	05 - 53	QK1-2086-000	08 - 11	QM3-5824-020	07 - 19
QC3-1943-000	R2 - 20	QK1-5066-000	12 - 4	QM3-5826-010	07 - 25
QC3-1944-000	R2 - 21	QK1-5067-000	12 - 3	QM3-5831-000	07 - 26
QC3-1945-000	R2 - 22	QK1-5068-000	07 - 41	QM3-5833-000	07 - 2
QC3-1946-000	R2 - 19	QK1-5080-000	04 - 10	QM3-5841-000	08 - 5
QC3-1947-000	R2 - 16	QK1-5097-000	01 - 17	QM3-5842-000	02 - 1
QC3-1948-000	R2 - 15	QK1-5098-000	01 - 18	QM3-5844-030	09 - 3
QC3-1949-000	R2 - 10	QK1-5099-000	01 - 20	QM3-5846-030	09 - 4
QC3-1950-000	R2 - 9	QK1-5141-000	04 - 2	QM3-5853-000	08 - 9
QC3-1953-000	R2 - 4	QK1-5143-000	07 - 39	QM3-5854-000	08 - 10
QC3-1955-000	R2 - 24	QK1-9687-000	07 - 38	QM3-5856-020	05 - 17
QC3-1958-000	R2 - 12	QK1-9860-000	05 - 71	QM3-5861-010	05 - 32
QC3-1959-000	R2 - 5	QL2-3157-010	10 - 5	QM3-5862-020	05 - 16
QC3-1962-000	R2 - 14	QL2-3158-010	10 - 4	QM3-5870-000	03 - 49
QC3-1963-000	R2 - 23	QL2-3159-010	10 - 3	QM3-5876-000	03 - 7
QC3-1969-000	R2 - 13	QL2-3160-010	10 - 2	QM3-5877-010	03 - 1
QC3-1971-000	R2 - 11	QL2-3172-030	02 - 21	QM3-5878-000	02 - 12
QD1-0004-000	R1 - 21	QL2-3173-010	02 - 20	QM3-5879-000	02 - 13
QD1-0004-000	R2 - 39	QL2-3175-000	03 - 36	QM3-5882-000	02 - 14
QD1-0005-000	R1 - 20	QL2-3175-000	07 - 11	QM3-5883-020	07 - 8
QD1-0005-000	R2 - 38	QL2-3182-000	12 - 1	QM3-5885-000	02 - 7
QD1-0006-000	06 - 1	QL2-3183-000	08 - 16	QM3-5886-000	02 - 8
QD1-0270-000	05 - 68	QL2-3203-000	07 - 14	QM3-5887-020	03 - 43
QD1-0287-000	05 - 59	QM3-1355-010	05 - 21	QM3-5889-000	01 - 4
QD1-0438-000	02 - 18	QM3-3267-010	01 - 13	QM3-5890-000	01 - 11
QD1-1095-000	R1 - 11	QM3-3269-010	01 - 15	QM3-5893-000	01 - 16
QD1-1095-000	R2 - 31	QM3-4569-010	07 - 31	QM3-5894-000	R1 - 2
QD1-1225-000	05 - 69	QM3-4574-000	07 - 22	QM3-5894-000	R2 - 2
QD1-1230-000	05 - 56	QM3-4582-000	04 - 11	QM3-5898-000	R1 - 6
QD1-1231-000	05 - 57	QM3-4583-000	09 - 9	QM3-5898-000	R2 - 25
QD1-1232-000	05 - 58	QM3-4584-000	09 - 10	QM3-5904-000	02 - 1
QD1-1233-000	05 - 70	QM3-4585-020	04 - 7	QM3-5905-000	08 - 1
QD1-1234-000	02 - 31	QM3-4587-000	04 - 8	QM3-5908-000	02 - 10
QD1-1235-000	02 - 26	QM3-4590-000	07 - 43	QM3-5909-000	02 - 11
QD1-1238-000	02 - 32	QM3-4591-000	07 - 42	QM3-5910-010	05 - 31
QD1-1239-000	02 - 27	QM3-4592-000	03 - 4	QM3-5911-000	02 - 15
QD1-1240-000	02 - 28	QM3-4599-000	08 - 25	QM3-5942-000	02 - 11
QD1-1245-000	02 - 6	QM3-4600-000	05 - 37	QM3-5946-000	11 - 1
QD1-1253-000	02 - 29	QM3-4601-000	05 - 38	QM3-5947-000	02 - 17
QD1-1254-000	02 - 30	QM3-4602-000	03 - 42	QM3-5949-020	10 - 1
QD1-1278-000	02 - 32	QM3-4611-000	12 - 11	QM3-5951-010	07 - 15
QD1-1281-000	02 - 32	QM3-4613-000	07 - 37	QM3-5953-010	03 - 27
QD1-1282-000	02 - 32	QM3-4932-000	08 - 24	QM3-5954-000	05 - 42
QE1-2819-010	07 - 17	QM3-5803-010	12 - 16	QM3-5955-000	05 - 43
QH2-2732-000	01 - 21	QM3-5804-010	12 - 17	QM3-5956-000	05 - 36

# NUMERICAL INDEX

iPF786/785/781/780/765/760/755/750(Numerical Index)

PARTS NUMBER	FIGURE & KEY NO.	PARTS NUMBER	FIGURE & KEY NO.	PARTS NUMBER	FIGURE & KEY NO
QM3-5957-000	05 - 12	QU1-2438-000	07 - 24	XA9-1386-000	08 - 23
QM3-5961-000	09 - 15	QU1-2439-000	07 - 30	XA9-1386-000	09 - 13
QM3-5971-010	10 - 11	QU1-2440-000	07 - 40	XA9-1386-000	10 - 9
QM3-5988-010	05 - 11	QU1-2441-000	07 - 3	XA9-1386-000	12 - 18
QM3-5996-000	R2 - 18	QU1-2442-000	11 - 3	XA9-1928-000	02 - 23
QM3-5997-000	R2 - 17	QU1-2443-000	05 - 29	XA9-1928-000	03 - 50
QM3-7911-000	03 - 41	QU1-2445-000	07 - 18	XA9-1928-000	04 - 4
QM4-8157-000	02 - 11	QU1-2446-000	12 - 2	XA9-1928-000	05 - 46
QM4-8158-000	02 - 11	QU1-2447-000	05 - 8	XA9-1928-000	07 - 44
QM4-8159-000	04 - 1	QU1-2449-000	03 - 39	XA9-1928-000	08 - 27
QM4-8160-010	04 - 1	QU1-2450-000	03 - 40	XA9-1928-000	09 - 14
QM4-8458-000	07 - 19	QU1-2451-000	07 - 12	XA9-1928-000	10 - 10
QM4-8459-000	05 - 73	QU1-2456-000	03 - 51	XA9-1928-000	11 - 9
QM4-8460-000	05 - 67	QU1-8264-000	07 - 34	XA9-1928-000	12 - 15
QM4-8463-000	05 - 55	QU1-8279-000	01 - 25	XB1-2200-507	12 - 501
QM4-8464-000	05 - 72	QU1-8293-000	R2 - 7	XB1-2260-409	05 - 501
QM4-8465-000	05 - 66	QY9-0037-000	13 - 3	XB1-2260-409	09 - 501
QM4-8467-000	05 - 54	QY9-0103-000	13 - 1	XB1-2300-407	04 - 501
QM4-8470-000	02 - 1	RK2-2884-000	03 - 48	XB1-2300-409	03 - 501
QM4-8471-000	02 - 1	WC4-5052-000	05 - 9	XB1-2300-607	05 - 502
QM4-8477-000	02 - 7	WC4-5052-000	08 - 13	XB1-2400-607	04 - 502
QM4-8478-000	02 - 8	WG8-5776-000	03 - 38	XB4-5300-807	02 - 501
QM4-8480-000	09 - 3	WG8-5776-000	05 - 30	XB4-5300-807	05 - 503
QM4-8483-000	02 - 17	WG8-5776-000	05 - 30	XB4-5300-807	07 - 501
QM4-8494-000	02 - 1	WG8-5776-000	09 - 8	XB4-5300-807	08 - 501
QM7-7077-000	05 - 60	WG8-5849-000	05 - 10	XB4-5300-807	R1 - 502
QM7-7084-000	05 - 64	WG8-5849-000	08 - 4	XB4-5300-807	R2 - 502
QM7-7100-000	05 - 61	WG8-5849-000	12 - 5	XB4-5400-807	09 - 503
QM7-7231-000	05 - 65	WM2-5278-000	04 - 3	XB4-5401-007	03 - 502
QM7-7289-000	04 - 1	WM2-5280-000	04 - 3	XB4-5401-007	05 - 504
QM7-7290-000	04 - 1	WM2-5285-000	04 - 3	XB4-5401-007	08 - 502
QM7-7291-000	07 - 31	WT2-0136-000	05 - 39	XB4-5401-007	12 - 503
QM7-7296-000	04 - 7	WT2-0204-000	05 - 48	XB4-6301-205	R2 - 503
QM7-7297-000	04 - 8	WT2-5056-000	05 - 44	XB4-6302-505	R2 - 504
QM7-7298-000	05 - 62	WT2-5056-000	08 - 21	XB6-7300-607	01 - 501
QM7-7299-000	05 - 63	WT2-5056-000	09 - 11	XB6-7300-607	12 - 502
QM7-7319-000	04 - 1	WT2-5056-000	12 - 13	XB7-2301-009	R1 - 501
QM7-7320-000	04 - 1	WT2-5694-000	03 - 46	XB7-2301-009	R2 - 501
QU1-0359-000	08 - 26	WT2-5694-000	04 - 5	XD1-4200-402	04 - 503
QU1-0360-000	11 - 2	WT2-5694-000	05 - 41	XD2-1100-242	09 - 502
QU1-0363-000	05 - 7	WT2-5694-000	08 - 22	XD2-1100-322	01 - 502
QU1-0365-000	09 - 7	WT2-5694-000	09 - 12	XD2-1100-502	01 - 503
QU1-0366-000	05 - 27	WT2-5737-000	05 - 40	XD2-1100-502	03 - 503
QU1-0367-000	05 - 28	WT2-5737-000	12 - 14	XZ9-0697-000	R2 - 37
QU1-0369-000	01 - 12	WT2-5738-000	04 - 6		
QU1-0370-000	03 - 26	WT2-5738-000	05 - 45		
QU1-0371-000	03 - 25	WT2-5738-000	12 - 12		
QU1-0372-000	03 - 31	WT2-5981-000	07 - 45		
QU1-0373-000	03 - 29	XA9-0949-000	R2 - 36		
QU1-0374-010	03 - 32	XA9-1386-000	01 - 26		
QU1-0375-000	03 - 24	XA9-1386-000	03 - 47		
QU1-2437-000	06 - 2	XA9-1386-000	05 - 22		



# iPF786/785/781/780/765/760/755/ 750(Parts Catalog)

## iPF786

120/230V	Q51-2435-000
230(CHN)	Q51-2436-000
230(KOR)	Q51-2438-000

## iPF785

120/230V	Q51-2434-000
100V	Q51-2437-000

## iPF781

120/230V	Q51-2425-000
230(CHN)	Q51-2426-000
230(KOR)	Q51-2428-000

## iPF780

120/230V	Q51-2424-000
100V	Q51-2427-000

## iPF765

120/230V	Q51-2364-000
230(CHN)	Q51-2366-000
100V	Q51-2367-000
230(KOR)	Q51-2368-000

## iPF760

120/230V	Q51-2354-000
230(CHN)	Q51-2356-000
100V	Q51-2357-000
230(KOR)	Q51-2358-000

## iPF755

120/230V	Q51-1894-000
230(CHN)	Q51-1896-000
100V	Q51-1897-000
230(KOR)	Q51-1898-000

## iPF750

120/230V	Q51-1764-000
230(CHN)	Q51-1766-000

**100V**                    **Q51-1767-000**

**230(KOR)**                **Q51-1768-000**

**STAND UNIT ST-33**

**Q51-2560-000**

**STAND UNIT ST-34**

**Q51-2800-000**



# Contents

01	PRINTER & ACCESSORIES .....	2-1
02	COVERS .....	2-4
03	ROLL UNIT .....	2-7
04	ELECTRICAL PART .....	2-10
05	INK SUPPLY & PURGE UNIT .....	2-12
06	LINEAR SCALE .....	2-17
07	CARRIAGE UNIT .....	2-18
08	AIR FLOW FAN UNIT .....	2-21
09	CUTTER UNIT .....	2-23
10	PLATEN & GUIDE UNIT .....	2-25
11	PINCH ROLLER UNIT .....	2-27
12	FEED ROLLER UNIT .....	2-28
13	TOOL .....	2-30
R1	STAND UNIT ST-33 .....	2-31
R2	STAND UNIT ST-34 .....	2-33
ZZA	MECHANICAL STANDARD PARTS(HOW TO USE) .....	2-37
ZZB	MECHANICAL STANDARD PARTS(SCREWS) .....	2-38
ZZC	MECHANICAL STANDARD PARTS(BOLTS) .....	2-45
ZZD	MECHANICAL STANDARD PARTS(NUTS) .....	2-46
ZZE	MECHANICAL STANDARD PARTS(RETAINING RINGS) .....	2-47



FIGURE 01  
PRINTER & ACCESSORIES

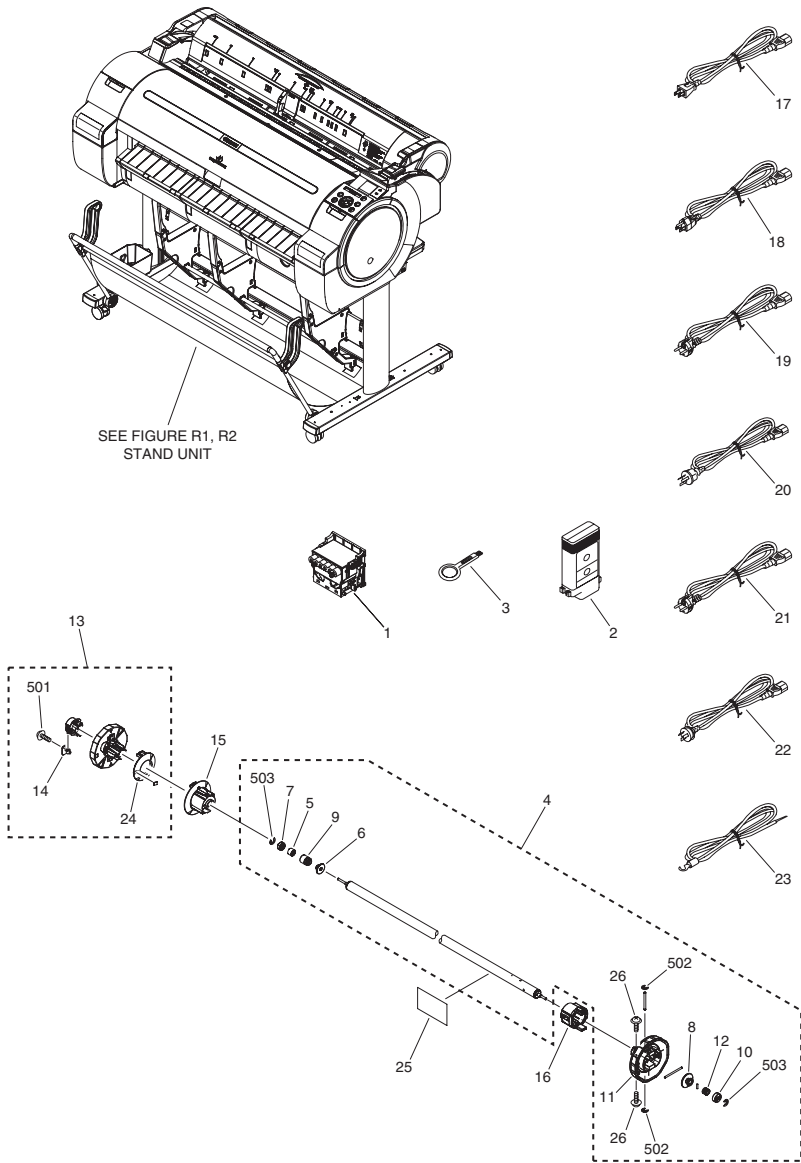


FIGURE & KEY NO.	PARTS NUMBER	R A N K	Q'TY	DESCRIPTION	SERIAL NUMBER/ REMARKS	S V C
Fig.01	NPN		RF	PRINTER & ACCESSORIES		
1	NPN		RF	PRINthead		
2	NPN		RF	INK TANK (MBK)		
2	NPN		RF	INK TANK (PBK)		
2	NPN		RF	INK TANK (C)		
2	NPN		RF	INK TANK (M)		
2	NPN		RF	INK TANK (Y)		
3	FB1-0733-000		1	BRUSH, CLEANING		
4	QM3-5889-000		1	SPOOL SHAFT UNIT		
5	QC3-1709-000		1	LIMITER, TORQUE		
6	QC3-1710-000		1	ROLLER, LIMIT, LEFT		
7	QC3-1711-000		1	CLUTCH, ONE-WAY		
8	QC3-1712-000		1	ROLLER, LIMIT, RIGHT		
9	QC3-1713-000		1	CAP, SPOOL, LEFT		
10	QC3-1714-000		1	CAP, SPOOL, RIGHT		
11	QM3-5890-000		1	FLANGE UNIT (R)		
12	QU1-0369-000		1	GEAR, 15T		
13	QM3-3267-010		1	FLANGE UNIT (L)		
14	QC1-6912-000		1	LEVER, LOCK, FLANGE		
15	QM3-3269-010		1	ROLL HOLDER UNIT (L)		
16	QM3-5893-000		1	ROLL HOLDER UNIT (R)		
17	QK1-5097-000		1	CORD, POWER	100V	
18	QK1-5098-000		1	CORD, POWER	120V UL	
19	QK1-1392-000		1	CORD, POWER	230V	
20	QK1-5099-000		1	CORD, POWER	230V AUS	
21	QH2-2732-000		1	CORD, POWER	230V KOR	
22	QK1-1396-010		1	CORD, POWER	230V CHN	
23	FH2-7092-020		1	WIRE, GROUND	100V	
24	QC2-6793-000		1	SPACER, ROLL		
25	QU1-8279-000		1	LABEL,ROLL HOLDER		
26	XA9-1386-000		2	SCREW, RS, M3X8		
501	XB6-7300-607		3	SCREW, CROSS-RECESS, FCH		

FIGURE & KEY NO.	PARTS NUMBER	R A N K	Q'TY	DESCRIPTION	SERIAL NUMBER/ REMARKS	S V C
502	XD2-1100-322		2	RETAINING RING (E-TYPE)		
503	XD2-1100-502		2	RETAINING RING (E-TYPE)		

FIGURE 02  
COVERS

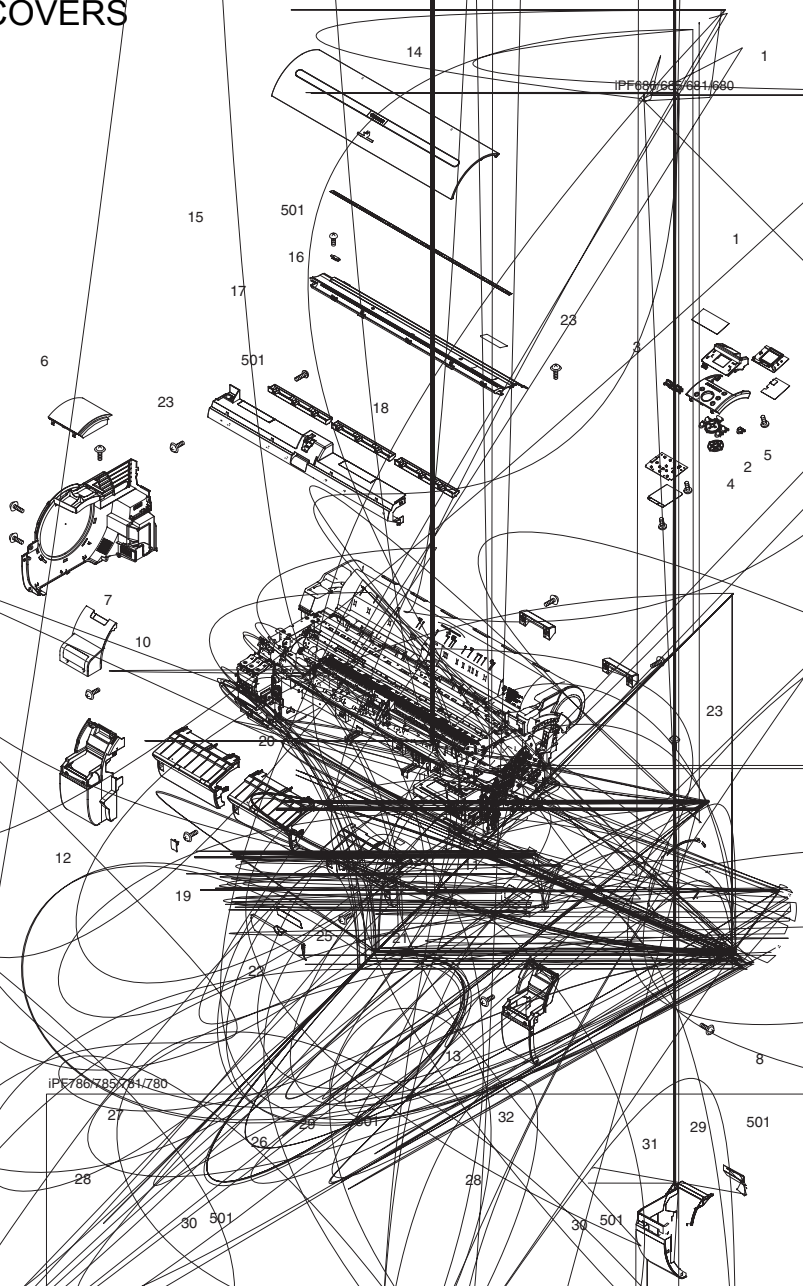


FIGURE & KEY NO.	PARTS NUMBER	R A N K	Q'TY	DESCRIPTION	SERIAL NUMBER/ REMARKS	S V C
Fig.02	NPN		RF	COVERS		
1	QM3-5842-000		1	OPERATION PANEL UNIT	iPF765/760/755/ 750:ENGLISH	
1	QM3-5904-000		1	OPERATION PANEL UNIT	iPF765/760/755/ 750:JAPANESE	
1	QM4-8471-000		1	OPERATION PANEL UNIT	iPF785/780:ENGLISH	
1	QM4-8470-000		1	OPERATION PANEL UNIT	iPF785/780:JAPANESE	
1	QM4-8494-000		1	OPERATION PANEL UNIT	iPF786/781	
2	QC3-1695-000		1	KEY, SCROLL	iPF765/760/755/750	
3	QC3-1696-000		1	KEY, LOAD/CUT	iPF765/760/755/750	
4	QC3-1697-000		1	KEY, OK	iPF765/760/755/750	
5	QC3-1698-000		1	KEY, POWER	iPF765/760/755/750	
6	QC3-1690-000		1	COVER, TOP, LEFT	iPF765/760/755/750	
6	QD1-1245-000		1	COVER, TOP, LEFT	iPF786/785/781/780	
7	QM3-5885-000		1	LEFT COVER UNIT	iPF765/760/755/750	
7	QM4-8477-000		1	LEFT COVER UNIT	iPF786/785/781/780	
8	QM3-5886-000		1	RIGHT COVER UNIT	iPF765/760/755/750	
8	QM4-8478-000		1	RIGHT COVER UNIT	iPF786/785/781/780	
9	QC3-1742-000		1	CAP, BLANKING		
10	QM3-5908-000		1	INK TANK COVER UNIT (L)	iPF765/760/755/750	
11	QM3-5909-000		1	INK TANK COVER UNIT (R)	iPF750	
11	QM3-5942-000		1	INK TANK COVER UNIT (R)	iPF755	
11	QM4-8157-000		1	INK TANK COVER UNIT (R)	iPF760	
11	QM4-8158-000		1	INK TANK COVER UNIT (R)	iPF765	
12	QM3-5878-000		1	FRONT COVER UNIT (L)	iPF765/760/755/750	
13	QM3-5879-000		1	FRONT COVER UNIT (R)	iPF765/760/755/750	
14	QM3-5882-000		1	UPPER COVER UNIT		
15	QM3-5911-000		1	UPPER REAR COVER UNIT		
16	QC3-1683-000		3	DAMPER		
17	QM3-5947-000		1	FRONT COVER UNIT	iPF765/760/755/750	
17	QM4-8483-000		1	FRONT COVER UNIT	iPF786/785/781/780	
18	QC3-1829-000		3	COVER, CUTTER GUARD	iPF765/760/755/750	
18	QD1-0438-000		3	COVER, CUTTER GUARD	iPF786/785/781/780	

FIGURE & KEY NO.	PARTS NUMBER	R A N K	Q'TY	DESCRIPTION	SERIAL NUMBER/ REMARKS	S V C
19	QC3-1668-000		3	CAP. SCREW		
20	QL2-3173-010		2	COVER, DELIVERY		
21	QL2-3172-030		1	COVER, DELEVERY, RIGHT		
22	QC3-1553-000		1	COVER, MAINTENANCE CARTRIDGE		
23	XA9-1928-000		AR	SCREW, TP, M3X8		
24	QC3-1900-000		1	PAD		
25	QC2-6633-000		1	LABEL		
26	QD1-1235-000		1	FRONT COVER (L)	iPF786/785/781/780	
27	QD1-1239-000		1	INK TANK COVER TOP (L)	iPF786/785/781/780	
28	QD1-1240-000		2	INK TANK COVER	iPF786/785/781/780	
29	QD1-1253-000		2	PLATE, SUPPORT	iPF786/785/781/780	
30	QD1-1254-000		2	JOINT, INK TANK COVER	iPF786/785/781/780	
31	QD1-1234-000		1	FRONT COVER (R)	iPF786/785/781/780	
32	QD1-1238-000		1	INK TANK COVER TOP (R)	iPF780	
32	QD1-1281-000		1	INK TANK COVER TOP (R)	iPF781	
32	QD1-1278-000		1	INK TANK COVER TOP (R)	iPF785	
32	QD1-1282-000		1	INK TANK COVER TOP (R)	iPF786	
501	XB4-5300-807		12	SCREW, P, M3X8		

# FIGURE 03 ROLL UNIT

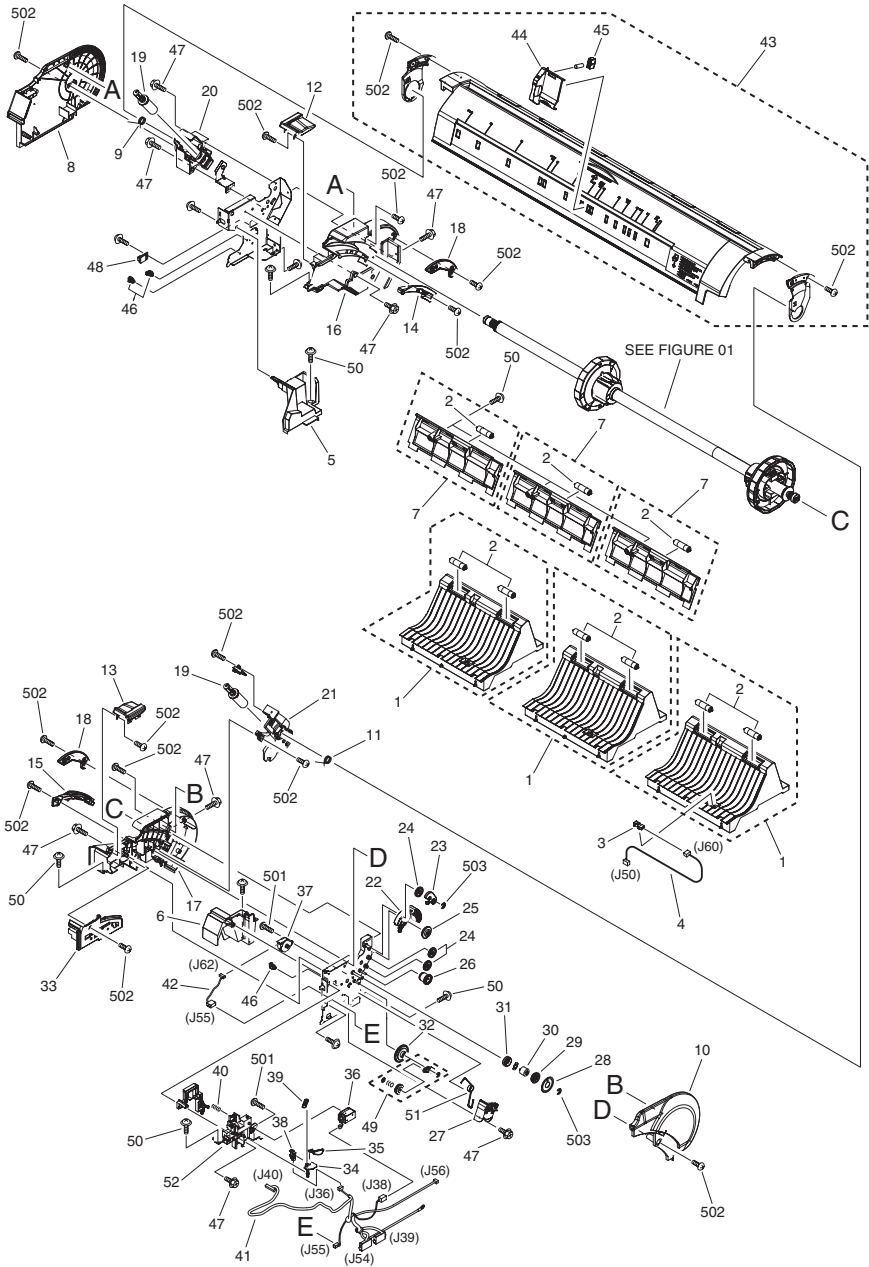


FIGURE & KEY NO.	PARTS NUMBER	R A N K	Q'TY	DESCRIPTION	SERIAL NUMBER/ REMARKS	S V C
Fig.03	NPN		RF	ROLL UNIT		
1	QM3-5877-010		3	FEED GUIDE UNIT (L)		
2	QC3-1661-000		9	ROLLER, GUIDE		
3	FK2-6470-000		1	PHOTO-SENSOR, KUA0055C		
4	QM3-4592-000		1	HARNESS, WIRE, PE		
5	QC3-1635-000		1	COVER, REAR, LEFT		
6	QC3-1654-000		1	COVER, REAR, RIGHT		
7	QM3-5876-000		3	FEED GUIDE UNIT (U)		
8	QC3-1752-010		1	COVER, ROLL, LEFT		
9	QC3-1672-000		1	SPRING, TORSION		
10	QC3-1658-000		1	COVER, ROLL, RIGHT		
11	QC3-1659-000		1	SPRING, TORSION		
12	QC3-1634-000		1	MOUNT, SPOOL, LEFT		
13	QC3-1639-000		1	MOUNT, SPOOL, RIGHT		
14	QC3-1759-000		1	RAIL, SPOOL, LEFT		
15	QC3-1760-000		1	RAIL, SPOOL, RIGHT		
16	QC3-1631-000		1	HOLDER, SPOOL, LEFT		
17	QC3-1638-000		1	HOLDER, SPOOL, RIGHT		
18	QC3-1819-000		2	COVER, SUPPORT		
19	QC3-1938-000		2	DAMPER, AIR		
20	QC3-1633-000		1	HOLDER, DAMPER, LEFT		
21	QC3-1648-000		1	HOLDER, DAMPER, RIGHT		
22	QC3-1647-000		1	COVER, SPOOL GEAR		
23	QC3-1818-000		1	COVER, GEAR		
24	QU1-0375-000		3	GEAR, 25T		
25	QU1-0371-000		1	GEAR, 17T/28T		
26	QU1-0370-000		1	GEAR, 18T/54T		
27	QM3-5953-010		1	ENCODER UNIT		
29	QU1-0373-000		1	GEAR, 50T		
30	QC3-1636-000		1	LIMITER, TORQUE		
31	QU1-0372-000		1	GEAR, 50T		
32	QU1-0374-010		1	GEAR, 32T/96T		

FIGURE & KEY NO.	PARTS NUMBER	R A N K	Q'TY	DESCRIPTION	SERIAL NUMBER/ REMARKS	S V C
33	QC3-1649-000		1	CAP, ROLL, RIGHT		
34	QC3-1651-000		1	FLAG, SENSOR		
35	QC3-1652-000		1	ARM, SENSOR FLAG		
36	QL2-3175-000		1	SOLENOID		
37	QK1-2081-000		1	MOTOR, STEPPING		
38	WG8-5776-000		1	PHOTO-INTERRUPTER, SG2481		
39	QU1-2449-000		1	SPRING, TENSION		
40	QU1-2450-000		1	SPRING, COMPRESSION		
41	QM3-7911-000		1	HARNESS, WIRE, ROLL		
42	QM3-4602-000		1	HARNESS, WIRE, MOTOR		
43	QM3-5887-020		1	ROLL COVER UNIT		
44	QC3-1706-000		1	GUIDE, SLIDE		
45	QC3-1707-000		1	LOCK, SLIDE GUIDE		
46	WT2-5694-000		3	CLIP CLAMP, WIRE		
47	XA9-1386-000		10	SCREW, RS, M3X8		
48	RK2-2884-000		1	ENVIRONMENT SENSOR PCB ASS'Y		
49	QM3-5870-000		1	GEAR UNIT		
50	XA9-1928-000		AR	SCREW, TP, M3X8		
51	QU1-2456-000		1	SPRING, TORSION		
52	QC3-1650-010		1	HOLDER, SENSOR FLAG		
501	XB1-2300-409		4	SCREW, MACHINE M3X4		
502	XB4-5401-007		19	SCREW, M4X10		
503	XD2-1100-502		2	RETAINING RING (E-TYPE)		

# FIGURE 04 ELECTRICAL PART

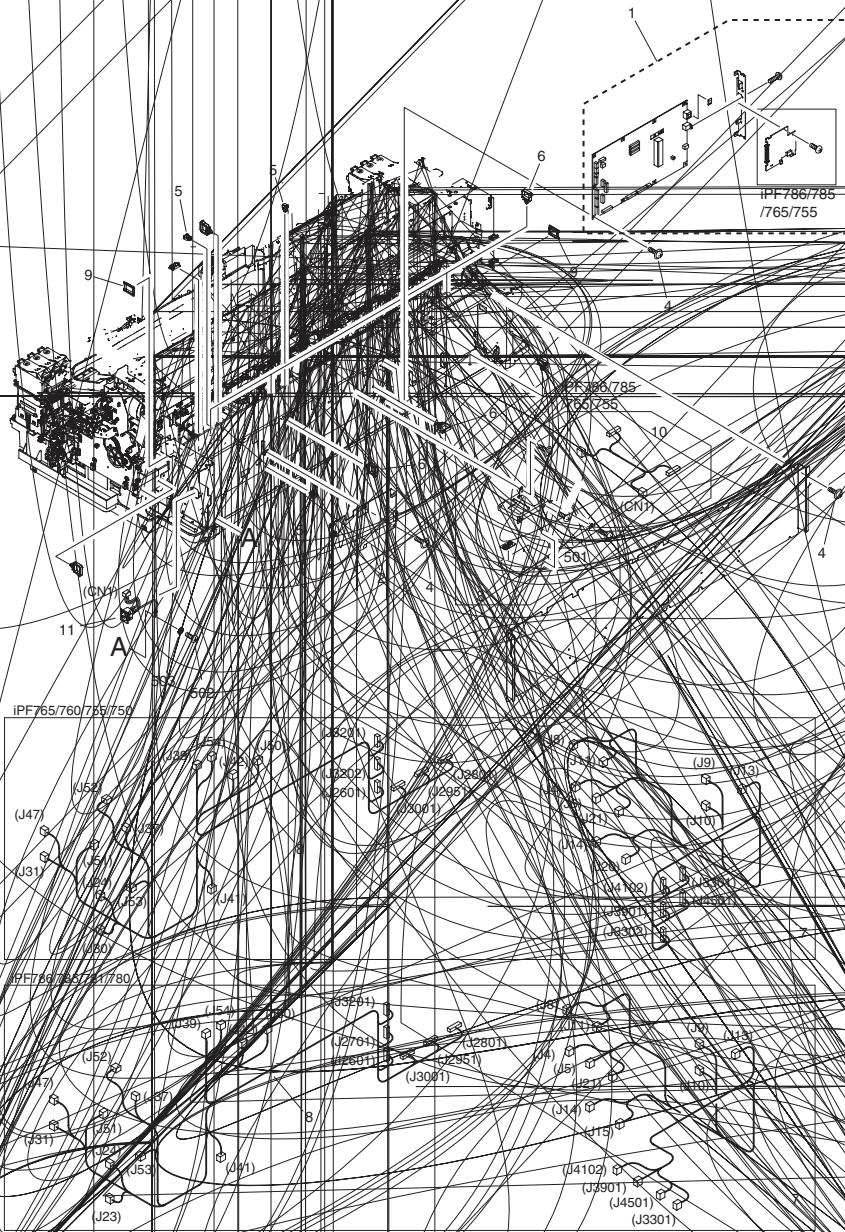
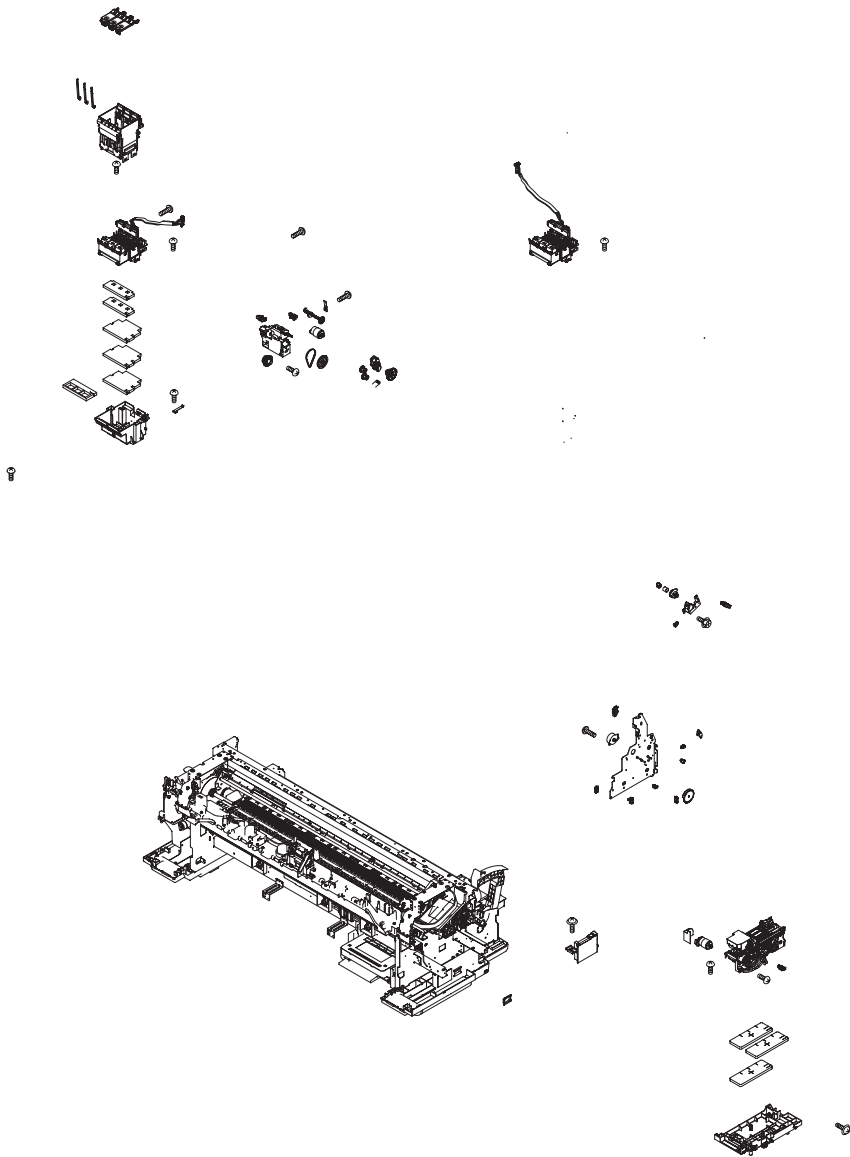


FIGURE & KEY NO.	PARTS NUMBER	R A N K	Q'TY	DESCRIPTION	SERIAL NUMBER/ REMARKS	S V C
Fig.04	NPN		RF	ELECTRICAL PART		
1	QM3-5820-010		1	MAIN CONTROLLER ASS'Y	iPF750	
1	QM3-5819-010		1	MAIN CONTROLLER ASS'Y	iPF755	
1	QM4-8159-000		1	MAIN CONTROLLER ASS'Y	iPF760	
1	QM4-8160-010		1	MAIN CONTROLLER ASS'Y	iPF765	
1	QM7-7289-000		1	MAIN CONTROLLER ASS'Y	iPF780	
1	QM7-7319-000		1	MAIN CONTROLLER ASS'Y	iPF781	
1	QM7-7290-000		1	MAIN CONTROLLER ASS'Y	iPF785	
1	QM7-7320-000		1	MAIN CONTROLLER ASS'Y	iPF786	
2	QK1-5141-000		1	POWER SUPPLY ASS'Y		
3	FK2-2416-000		1	HDD, WD800BEVT-22ZCT0	iPF755(80GB)	
3	WM2-5278-000		1	HDD, MK1676GSX(HDD2J96QSL)	iPF755(160GB)	
3	WM2-5280-000		1	HDD, MK2575GSX(HDD2L05QSL)	iPF765(250GB)	
3	WM2-5285-000		1	HDD, MQ01ABF032	iPF786/785(320GB)	
4	XA9-1928-000		AR	SCREW, TP, M3X8		
5	WT2-5694-000		3	CLIP CLAMP, WIRE		
6	WT2-5738-000		7	CLAMP, CABLE		
7	QM3-4585-020		1	HARNESS, WIRE, LEFT	iPF765/760/755/750	
7	QM7-7296-000		1	HARNESS, WIRE, LEFT	iPF786/785/781/780	
8	QM3-4587-000		1	HARNESS, WIRE, RIGHT	iPF765/760/755/750	
8	QM7-7297-000		1	HARNESS, WIRE, RIGHT	iPF786/785/781/780	
9	FC7-7556-000		2	SADDLE, WIRE		
10	QK1-5080-000		1	HARNESS, WIRE, HDD	iPF765/755	
11	QM3-4582-000		1	HARNESS, INLET		
501	XB1-2300-407		4	SCREW, MACH, TRUSS HEAD, M3X4	iPF765/755	
502	XB1-2400-607		1	SCREW, CROSS-RECESS, FCH		
503	XD1-4200-402		1	WASHER, TOOTHED LOCK, M4		

FIGURE 05  
INK SUPPLY & PURGE UNIT



# iPF786/785/781/780

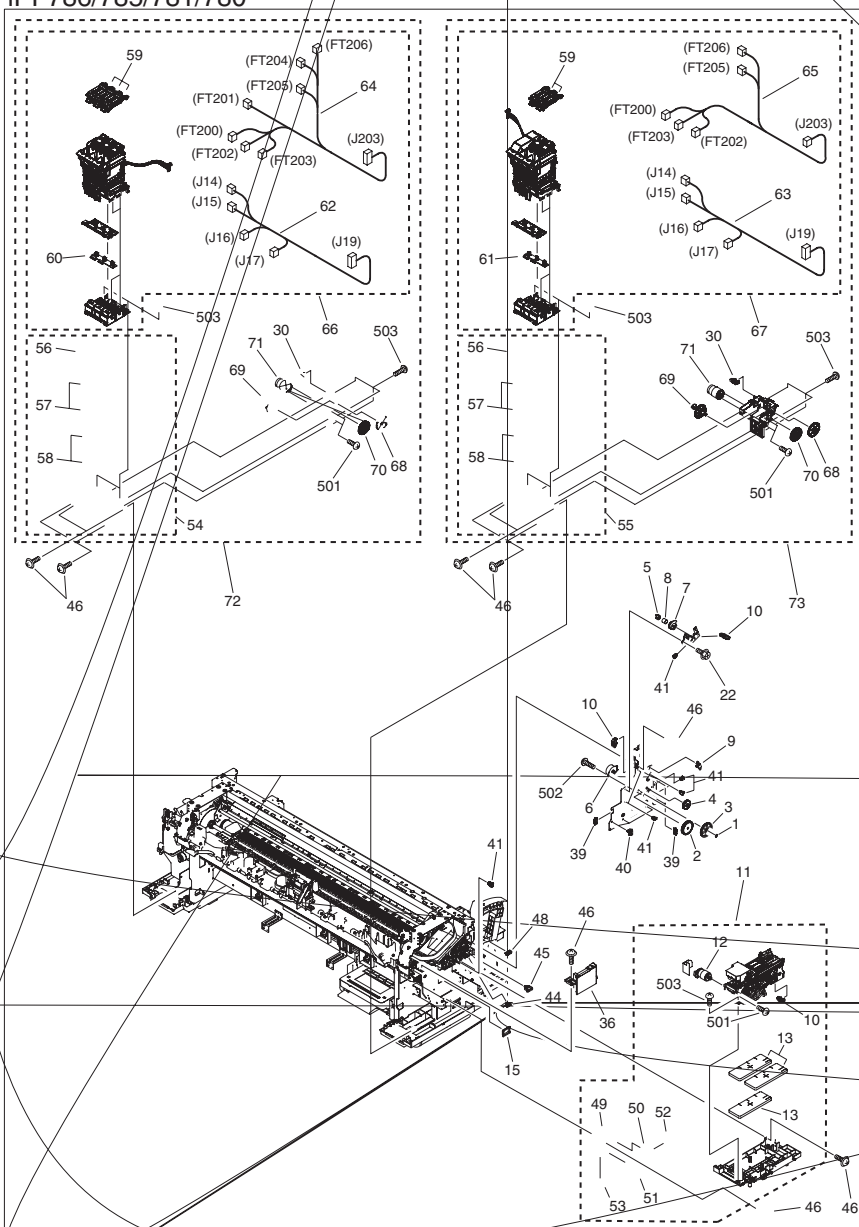


FIGURE & KEY NO.	PARTS NUMBER	R A N K	Q'TY	DESCRIPTION	SERIAL NUMBER/ REMARKS	S V C
Fig.05	NPN		RF	INK SUPPLY & PURGE UNIT		
1	QC2-0682-000		1	RING		
2	QC2-0687-000		1	GEAR, LIFT, IDLER B		
3	QC2-0689-000		1	GEAR, LIFT, DOUBLE B		
4	QC2-0690-000		1	GEAR, LIFT, DOUBLE C		
5	QC3-1550-000		1	COUPLING		
6	QK1-0440-000		1	MOTOR, STEPPING DC 10W UNDER		
7	QU1-0363-000		1	GEAR, LIFT, 30T		
8	QU1-2447-000		1	SPRING, COMPRESSION		
9	WC4-5052-000		1	MICRO SWITCH		
10	WG8-5849-000		3	PHOTOINTERRUPTER, GP1S173LCS0F		
11	QM3-5988-010		1	PURGE UNIT		
12	QM3-5957-000		1	MOTOR, DC		
13	QC3-1542-000		3	ABSORBER, INK		
15	FC7-7556-000		1	SADDLE, WIRE		
16	QM3-5862-020		1	INK SUPPLY UNIT (L)	iPF765/760/755/750	
17	QM3-5856-020		1	INK SUPPLY UNIT (R)	iPF765/760/755/750	
18	QC2-0729-000		6	HOLDER, INK TANK	iPF765/760/755/750	
19	QC2-0736-000		6	GUIDE, LIGHT	iPF765/760/755/750	
20	QC2-1281-000		6	LEVER, INK TANK	iPF765/760/755/750	
21	QM3-1355-010		2	INK TANK ROM PCB UNIT	iPF765/760/755/750	
22	XA9-1386-000		2	SCREW, RS, M3X8		
23	QC2-0739-000		2	GEAR, VALVE 2	iPF765/760/755/750	
24	QC2-0832-000		2	BELT, TIMING	iPF765/760/755/750	
25	QC3-1612-000		2	CAM GEAR, 38T	iPF765/760/755/750	
26	QK1-0550-000		2	MOTOR, 24V, DC	iPF765/760/755/750	
27	QU1-0366-000		2	GEAR, 22T/70T	iPF765/760/755/750	
28	QU1-0367-000		4	GEAR, 14T	iPF765/760/755/750	
29	QU1-2443-000		2	SPRING, TORSION	iPF765/760/755/750	
30	WG8-5776-000		4	PHOTO-INTERRUPTER, SG2481	iPF765/760/755/750	
30	WG8-5776-000		2	PHOTO-INTERRUPTER, SG2481	iPF786/785/781/780	
31	QM3-5910-010		1	INK SUPPLY MOUNT UNIT (L)	iPF765/760/755/750	

FIGURE & KEY NO.	PARTS NUMBER	R A N K	Q'TY	DESCRIPTION	SERIAL NUMBER/ REMARKS	S V C
32	QM3-5861-010		1	INK SUPPLY MOUNT UNIT (R)	iPF765/760/755/750	
33	QC3-1615-000		2	ABSORBER, INK	iPF765/760/755/750	
34	QC3-1616-000		4	ABSORBER, INK	iPF765/760/755/750	
35	QC3-1617-000		6	ABSORBER, INK	iPF765/760/755/750	
36	QM3-5956-000		1	HEAD MANAGEMENT SENSOR UNIT		
37	QM3-4600-000		1	HARNESS, WIRE, TANK, LEFT	iPF765/760/755/750	
38	QM3-4601-000		1	HARNESS, WIRE, TANK (R)	iPF765/760/755/750	
39	WT2-0136-000		4	CLAMP, CORD		
40	WT2-5737-000		3	CLIP, CABLE		
41	WT2-5694-000		8	CLIP CLAMP, WIRE		
42	QM3-5954-000		1	INK SUPPLY TANK UNIT (R)	iPF765/760/755/750	
43	QM3-5955-000		1	INK SUPPLY TANK UNIT (L)	iPF765/760/755/750	
44	WT2-5056-000		2	CLIP, CORD		
45	WT2-5738-000		1	CLAMP, CABLE		
46	XA9-1928-000		AR	SCREW, TP, M3X8		
48	WT2-0204-000		1	CLAMP, CORD		
49	QC3-1928-000		1	MOUNT, JOINT, INK		
50	QC3-1929-000		1	JOINT A, INK		
51	QC3-1930-000		1	JOINT B, INK		
52	QC3-1931-000		1	CLAMP		
53	QC3-1939-000		1	TAPE, MOUNT, JOINT, INK		
54	QM4-8467-000		1	INK SUPPLY MOUNT UNIT (L)	iPF786/785/781/780	
55	QM4-8463-000		1	INK SUPPLY MOUNT UNIT (R)	iPF786/785/781/780	
56	QD1-1230-000		2	ABSORBER, INK	iPF786/785/781/780	
57	QD1-1231-000		4	ABSORBER, INK	iPF786/785/781/780	
58	QD1-1232-000		4	ABSORBER, INK	iPF786/785/781/780	
59	QD1-0287-000		5	LEVER, INK TANK	iPF786/785/781/780	
60	QM7-7077-000		1	INK TANK ROM PCB UNIT (L)	iPF786/785/781/780	
61	QM7-7100-000		1	INK TANK ROM PCB UNIT (R)	iPF786/785/781/780	
62	QM7-7298-000		1	HARNESS, WIRE, TANK (L)	iPF786/785/781/780	
63	QM7-7299-000		1	HARNESS, WIRE, TANK (R)	iPF786/785/781/780	
64	QM7-7084-000		1	HARNESS, WIRE, INK SENSOR (L)	iPF786/785/781/780	

FIGURE & KEY NO.	PARTS NUMBER	R A N K	Q'TY	DESCRIPTION	SERIAL NUMBER/ REMARKS	S V C
65	QM7-7231-000		1	HARNESS, WIRE, INK SENSOR (R)	IPF786/785/781/780	
66	QM4-8465-000		1	INK SUPPLY TANK UNIT (L)	IPF786/785/781/780	
67	QM4-8460-000		1	INK SUPPLY TANK UNIT (R)	IPF786/785/781/780	
68	QD1-0270-000		2	GEAR, VALVE	IPF786/785/781/780	
69	QD1-1225-000		2	CAM, VALVE 6T/52T	IPF786/785/781/780	
70	QD1-1233-000		2	GEAR, VALVE 22T/80T	IPF786/785/781/780	
71	QK1-9860-000		2	MOTOR, 24V, DC	IPF786/785/781/780	
72	QM4-8464-000		1	INK SUPPLY UNIT (L)	IPF786/785/781/780	
73	QM4-8459-000		1	INK SUPPLY UNIT (R)	IPF786/785/781/780	
501	XB1-2260-409		6	SCREW, BINDING HEAD, M2.6X4		
502	XB1-2300-607		2	SCREW, BH3X6		
503	XB4-5300-807		27	SCREW, P, M3X8		
504	XB4-5401-007		8	SCREW, M4X10		

FIGURE 06  
LINEAR SCALE

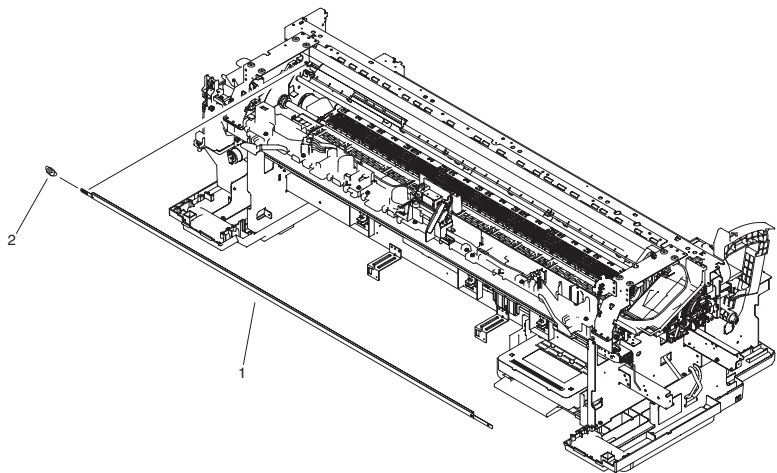


FIGURE & KEY NO.	PARTS NUMBER	R A N K	Q'TY	DESCRIPTION	SERIAL NUMBER/ REMARKS	S V C
Fig.06	NPN		RF	LINEAR SCALE		
1	QC3-1878-000		1	SCALE, LINEAR	iPF765/760/755/750	
1	QD1-0006-000		1	SCALE, LINEAR	iPF786/785/781/780	
2	QU1-2437-000		1	SPRING, TENSION		

FIGURE 07  
CARRIAGE UNIT

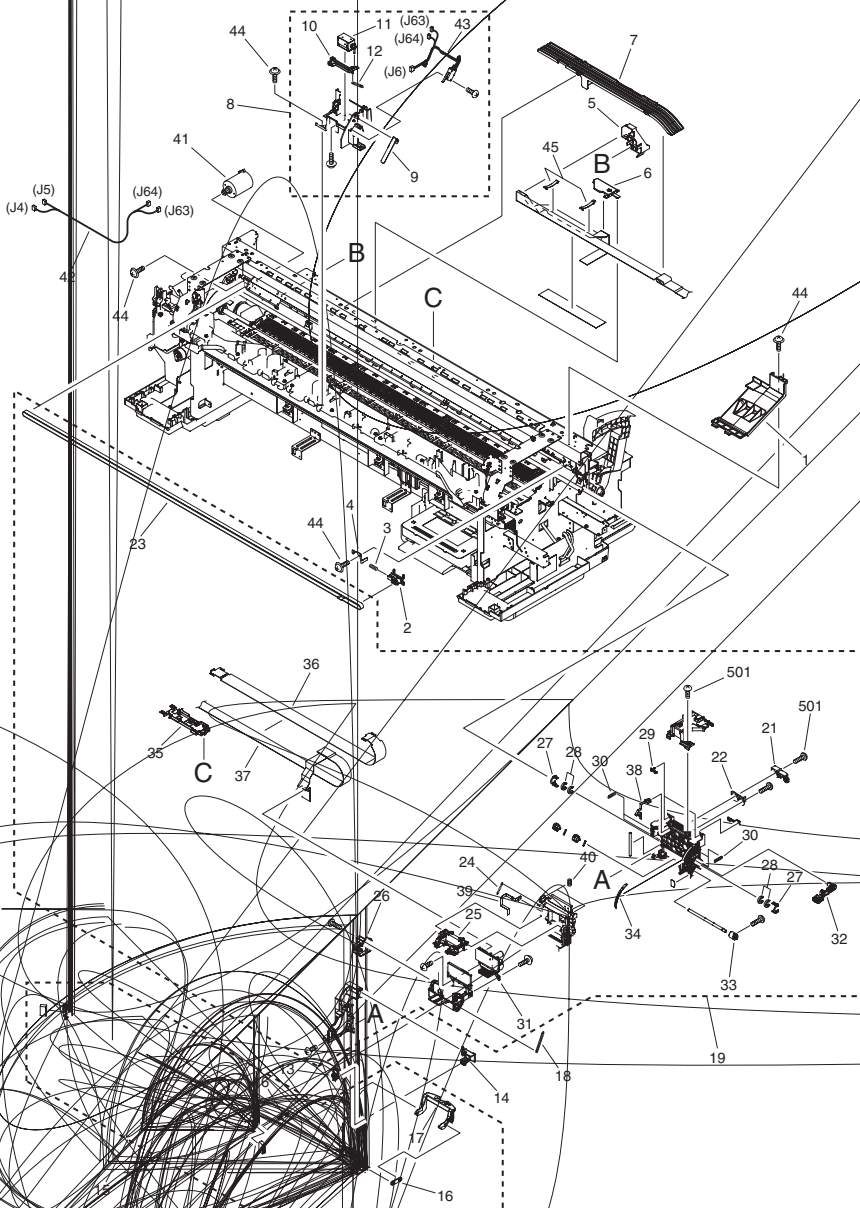


FIGURE & KEY NO.	PARTS NUMBER	R A N K	Q'TY	DESCRIPTION	SERIAL NUMBER/ REMARKS	S V C
Fig.07	NPN		RF	CARRIAGE UNIT		
1	QC3-1751-000		1	COVER, PROTECTION		
2	QM3-5833-000		1	PULLEY UNIT		
3	QU1-2441-000		1	SPRING, COMPRESSION		
4	QC3-1531-000		1	RETAINER, PULLEY		
5	QC3-1532-000		1	HOLDER, FLEXIBLE CABLE		
6	QC3-1533-000		1	COVER, FLEXIBLE CABLE		
7	QC3-1534-010		1	GUIDE, FLEXIBLE CABLE		
8	QM3-5883-020		1	COVER LOCK UNIT		
9	QC3-1684-000		1	PLATE, SWITCH		
10	QC3-1686-010		1	LEVER, LOCK		
11	QL2-3175-000		1	SOLENOID		
12	QU1-2451-000		1	SPRING, TENSION		
13	QC3-1621-000		1	SUPPORT, TUBE		
14	QL2-3203-000		1	GUIDE, TUBE		
15	QM3-5951-010		1	INK TUBE UNIT		
16	QC1-0008-000		2	JOINT LEVER B		
17	QE1-2819-010		1	JOINT LEVER A		
18	QU1-2445-000		1	SPRING, TENSION		
19	QM3-5824-020		1	CARRIAGE UNIT	IPF765/760/755/750	
19	QM4-8458-000		1	CARRIAGE UNIT	IPF786/785/781/780	
21	QC3-1524-000		1	COVER, LINEAR ENCODER		
22	QM3-4574-000		1	ENCODER SENSOR UNIT		
23	QC3-1526-000		1	BELT, CARRIAGE		
24	QU1-2438-000		1	SPRING, TENSION		
25	QM3-5826-010		1	HEAD LEVER UNIT		
26	QM3-5831-000		1	MULTI SENSOR UNIT		
27	QC3-1515-000		2	RETAINER, PAD		
28	QC3-1514-000		4	PAD		
29	QC3-1511-000		2	SLIDER, RAIL		
30	QU1-2439-000		4	SPRING, TENSION		
31	QM3-4569-010		1	CARRIAGE PCB UNIT	IPF765/760/755/750	

FIGURE & KEY NO.	PARTS NUMBER	R A N K	Q'TY	DESCRIPTION	SERIAL NUMBER/ REMARKS	S V C
31	QM7-7291-000		1	CARRIAGE PCB UNIT	IPF786/785/781/780	
32	QC3-1516-000		1	LEVER, SLANT		
33	QC3-1519-000		1	COUPLING		
34	QU1-8264-000		1	LABEL, SLANT		
35	QC3-1527-000		1	HOLDER, FLEXIBLE CABLE		
36	QC3-1525-000		1	FILM, FLEXIBLE CABLE		
37	QM3-4613-000		1	FLEXIBLE CABLE UNIT		
38	QK1-9687-000		1	CABLE, FLEXIBLE		
39	QK1-5143-000		1	CABLE, FLEXIBLE		
40	QU1-2440-000		2	SPRING, COMPRESSION		
41	QK1-5068-000		1	MOTOR, DC		
42	QM3-4591-000		1	HARNESS, WIRE, INTERLOCK RELAY		
43	QM3-4590-000		1	HARNESS, WIRE, INTERLOCK		
44	XA9-1928-000		6	SCREW, TP, M3X8		
45	WT2-5981-000		2	CLAMP, CORD		
501	XB4-5300-807		7	SCREW, P, M3X8		

FIGURE 08  
AIR FLOW FAN UNIT

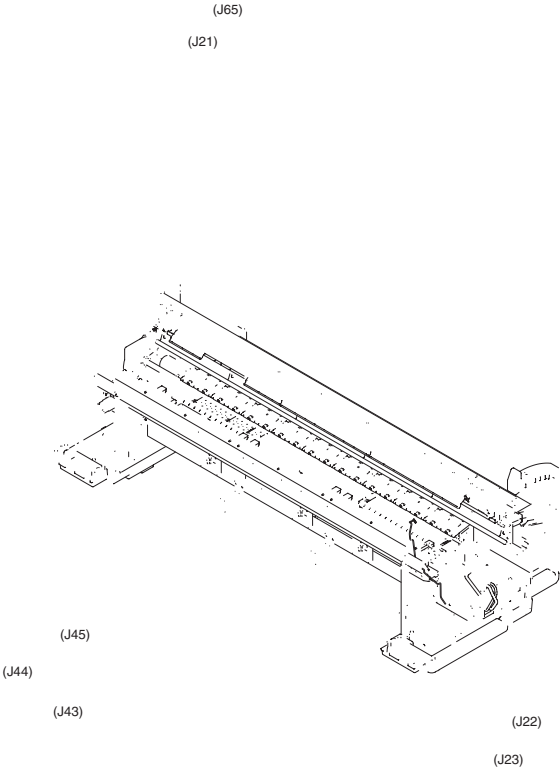


FIGURE & KEY NO.	PARTS NUMBER	R A N K	Q'TY	DESCRIPTION	SERIAL NUMBER/ REMARKS	S V C
Fig.08	NPN		RF	AIR FLOW FAN UNIT		
1	QM3-5905-000		1	SUCTION FAN UNIT		
2	QM3-5808-000		1	PLATEN SHUTTER DRIVE UNIT		
3	QK1-0440-000		1	MOTOR, STEPPING DC 10W UNDER		
4	WG8-5849-000		1	PHOTOINTERRUPTER, GP1S173LCS0F		
5	QM3-5841-000		1	M/C HOLDER UNIT		
6	QC3-1552-000		1	ABSORBER, INK		
7	QC3-1808-000		1	ABSORBER, INK		
8	QC3-1445-000		1	GEAR, SHUTTER		
9	QM3-5853-000		1	MIST FAN DUCT UNIT		
10	QM3-5854-000		1	FAN UNIT		
11	QK1-2086-000		1	FAN		
12	QM3-5805-000		1	WASTE INK BOX UNIT		
13	WC4-5052-000		2	MICRO SWITCH		
14	QC3-1568-000		1	COVER, FRONT DUCT		
15	QC3-1569-000		1	COVER, FRONT DUCT, LEFT		
16	QL2-3183-000		1	COVER, FRONT DUCT, RIGHT		
17	QC3-1570-000		1	ABSORBER, INK		
18	QC3-1571-000		4	ABSORBER, INK		
19	QC3-1572-000		1	ABSORBER, INK		
20	QC3-1574-000		1	SEAL, FRONT DUCT		
21	WT2-5056-000		6	CLIP, CORD		
22	WT2-5694-000		6	CLIP CLAMP, WIRE		
23	XA9-1386-000		20	SCREW, RS, M3X8		
24	QM3-4932-000		1	M/C RELAY PCB ASS'Y		
25	QM3-4599-000		1	HARNESS, WIRE, TANK COVER L		
26	QU1-0359-000		1	GEAR, 20T/72T		
27	XA9-1928-000		AR	SCREW, TP, M3X8		
28	QC3-1437-000		1	JOINT, TUBE, COLOR		
501	XB4-5300-807		4	SCREW, P, M3X8		
502	XB4-5401-007		5	SCREW, M4X10		

FIGURE 09  
CUTTER UNIT

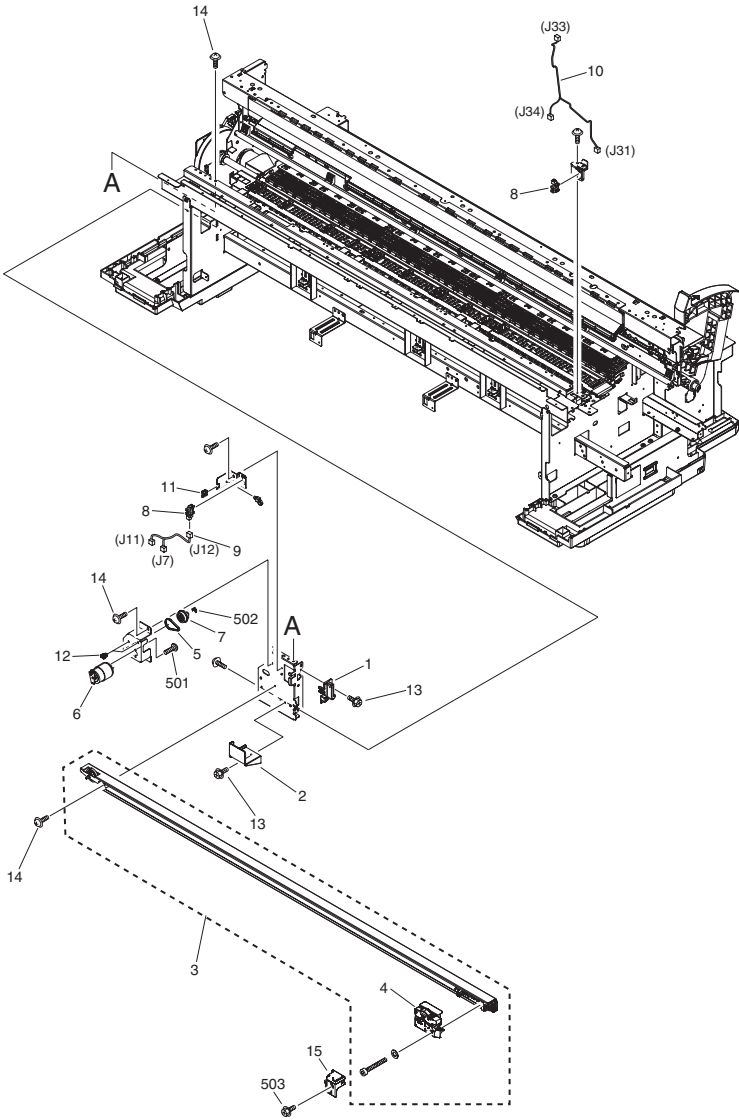


FIGURE & KEY NO.	PARTS NUMBER	R A N K	Q'TY	DESCRIPTION	SERIAL NUMBER/ REMARKS	S V C
Fig.09	NPN		RF	CUTTER UNIT		
1	QC3-1555-000		1	COVER, PLATE		
2	QC3-1766-000		1	COVER, CUTTER DRIVE		
3	QM3-5844-030		1	CUTTER UNIT	IPF765/760/755/750	
3	QM4-8480-000		1	CUTTER UNIT	IPF786/785/781/780	
4	QM3-5846-030		1	CUTTER		
5	QC1-4850-000		1	BELT, TIMING		
6	QK1-0550-000		1	MOTOR, 24V, DC		
7	QU1-0365-000		1	GEAR, 30T		
8	WG8-5776-000		2	PHOTO-INTERRUPTER, SG2481		
9	QM3-4583-000		1	HARNESS, WIRE, CUTTER, LEFT		
10	QM3-4584-000		1	HARNESS, WIRE, CUTTER, RIGHT		
11	WT2-5056-000		1	CLIP, CORD		
12	WT2-5694-000		2	CLIP CLAMP, WIRE		
13	XA9-1386-000		2	SCREW, RS, M3X8		
14	XA9-1928-000		AR	SCREW, TP, M3X8		
15	QM3-5961-000		1	CUTTER SUPPORT UNIT		
501	XB1-2260-409		2	SCREW, BINDING HEAD, M2.6X4		
502	XD2-1100-242		1	WASHER, RETAINING		
503	XB4-5400-807		1	SCREW, P, M4X8		

FIGURE 10  
PLATEN & GUIDE UNIT

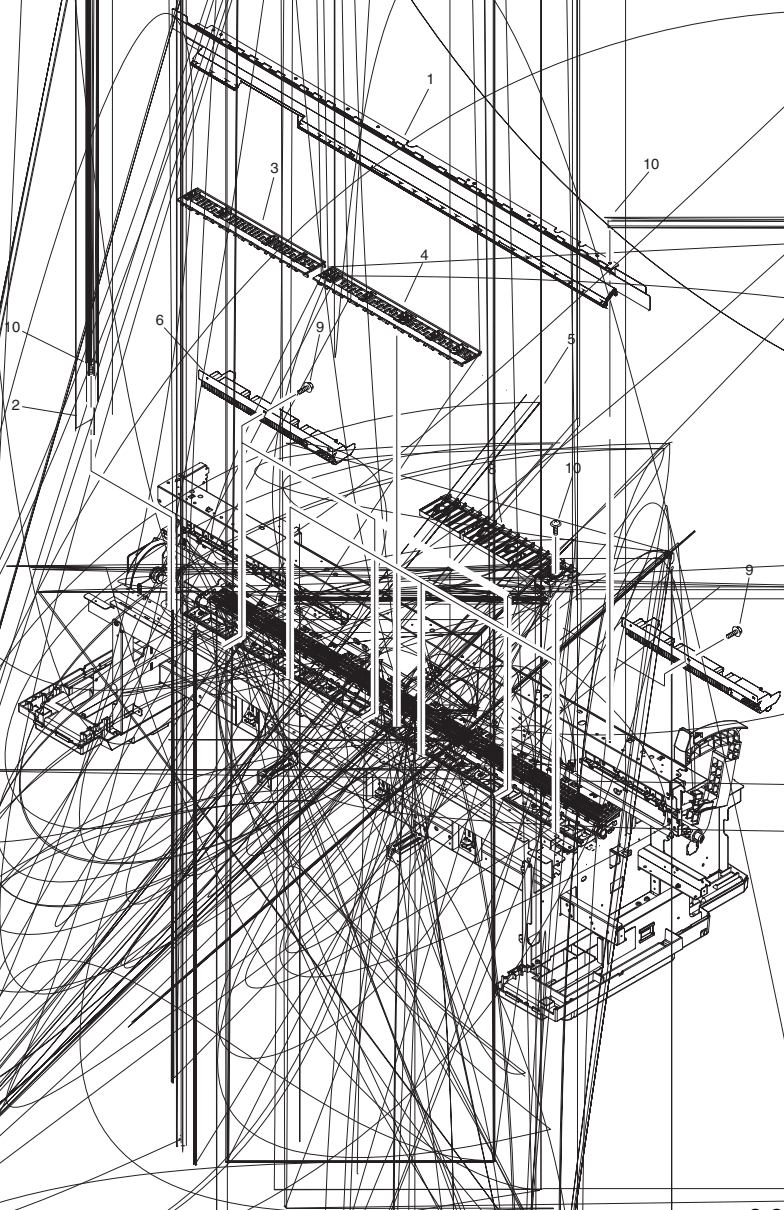


FIGURE & KEY NO.	PARTS NUMBER	R A N K	Q'TY	DESCRIPTION	SERIAL NUMBER/ REMARKS	S V C
Fig.10	NPN		RF	PLATEN & GUIDE UNIT		
1	QM3-5949-020		1	TUBE GUIDE UNIT		
2	QL2-3160-010		1	MOUNT, MULTI SENSOR REFERENCE		
3	QL2-3159-010		1	PLATEN, LEFT		
4	QL2-3158-010		1	PLATEN		
5	QL2-3157-010		1	PLATEN, RIGHT		
6	QC3-1916-010		2	GUIDE, DELIVERY, UPPER		
8	QC3-1458-010		2	GUIDE, DELIVERY		
9	XA9-1386-000		9	SCREW, RS, M3X8		
10	XA9-1928-000		AR	SCREW, TP, M3X8		
11	QM3-5971-010		1	GUIDE, DELIVERY, UPPER, HP		

FIGURE 11  
PINCH ROLLER UNIT

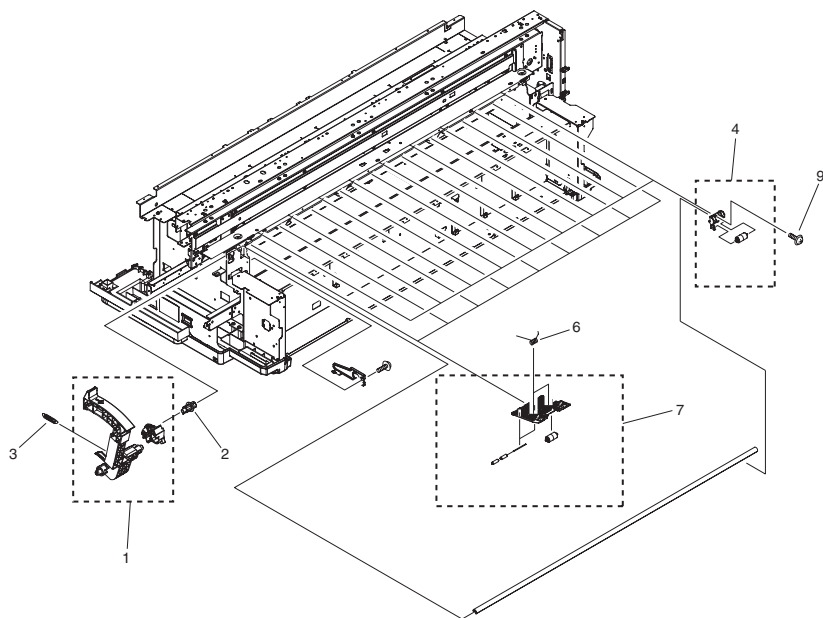


FIGURE & KEY NO.	PARTS NUMBER	R A N K	Q'TY	DESCRIPTION	SERIAL NUMBER/ REMARKS	S V C
Fig.11	NPN		RF	PINCH ROLLER UNIT		
1	QM3-5946-000		1	RELEASE LEVER UNIT		
2	QU1-0360-000		1	GEAR, RELEASE, 14T		
3	QU1-2442-000		1	SPRING, TENSION		
4	QM3-5817-000		9	PAPER GUIDE ROLLER UNIT		
6	QC3-1480-000		18	SPRING, TORSION		
7	QM3-5816-020		9	HOLDER, PINCH ROLLER		
9	XA9-1928-000		AR	SCREW, TP, M3X8		

FIGURE 12  
FEED ROLLER UNIT

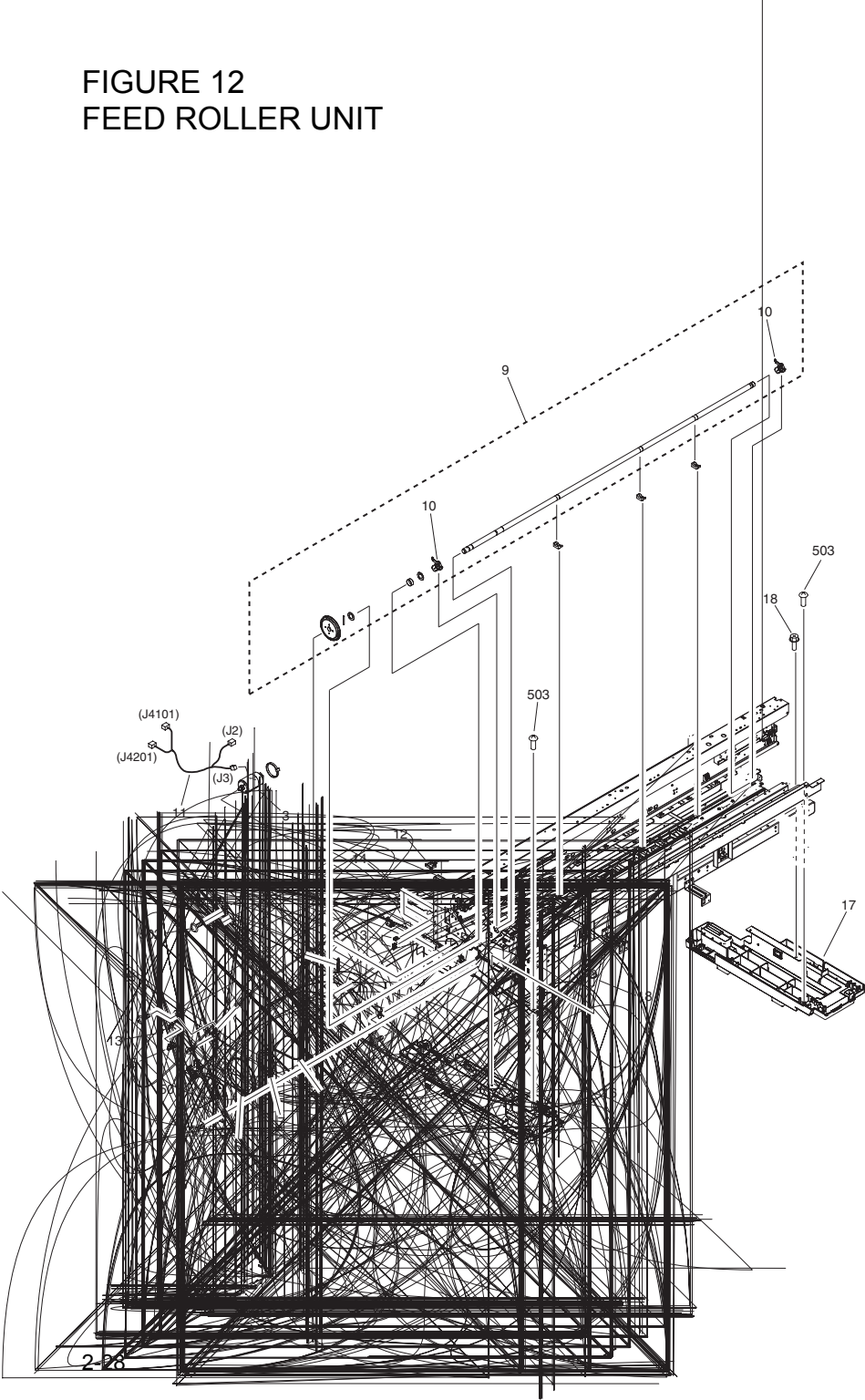


FIGURE & KEY NO.	PARTS NUMBER	R A N K	Q'TY	DESCRIPTION	SERIAL NUMBER/ REMARKS	S V C
Fig.12	NPN		RF	FEED ROLLER UNIT		
1	QL2-3182-000		1	COVER, CODE WHEEL		
2	QU1-2446-000		2	SPRING, TENSION		
3	QK1-5067-000		1	MOTOR, DC		
4	QK1-5066-000		1	ENCODER ASS'Y		
5	WG8-5849-000		1	PHOTOINTERRUPTER, GP1S173LCS0F		
6	QC3-1879-000		1	WHEEL, CODE		
7	QC2-0998-000		1	FLANGE, PULLEY		
8	QC2-0957-000		1	BELT, DRIVE, PAPER TRANSPORT		
9	QM3-5815-000		1	FEED ROLLER ASS'Y		
10	QC3-1478-000		2	BUSHING		
11	QM3-4611-000		1	HARNESS, WIRE, MOTOR		
12	WT2-5738-000		2	CLAMP, CABLE		
13	WT2-5056-000		3	CLIP, CORD		
14	WT2-5737-000		2	CLIP, CABLE		
15	XA9-1928-000		4	SCREW, TP, M3X8		
16	QM3-5803-010		1	BOTTOM COVER UNIT, L		
17	QM3-5804-010		1	BOTTOM COVER UNIT, R		
18	XA9-1386-000		4	SCREW, RS, M3X8		
501	XB1-2200-507		2	SCREW, BH 2X5, S		
502	XB6-7300-607		2	SCREW, CROSS-RECESS, FCH		
503	XB4-5401-007		6	SCREW, M4X10		

FIGURE 13  
TOOL

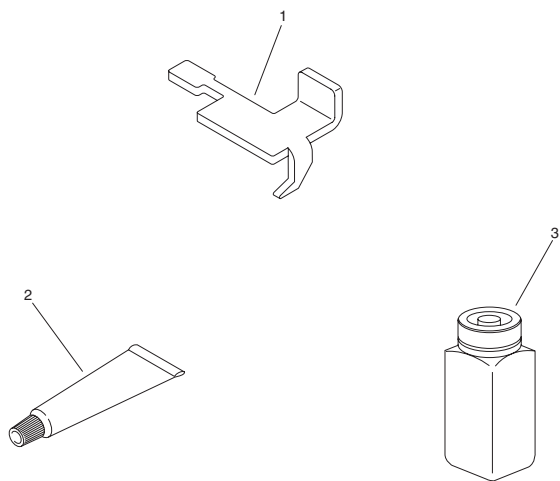


FIGURE & KEY NO.	PARTS NUMBER	R A N K	Q'TY	DESCRIPTION	SERIAL NUMBER/ REMARKS	S V C
Fig.13	NPN		RF	TOOL		
1	QY9-0103-000		1	COVER SWITCH TOOL		
2	FY9-6022-000		1	LUBE, FLOIL G-5000H, GREASE		
3	QY9-0037-000		1	GREASE, EU-1		

FIGURE R1  
STAND UNIT ST-33

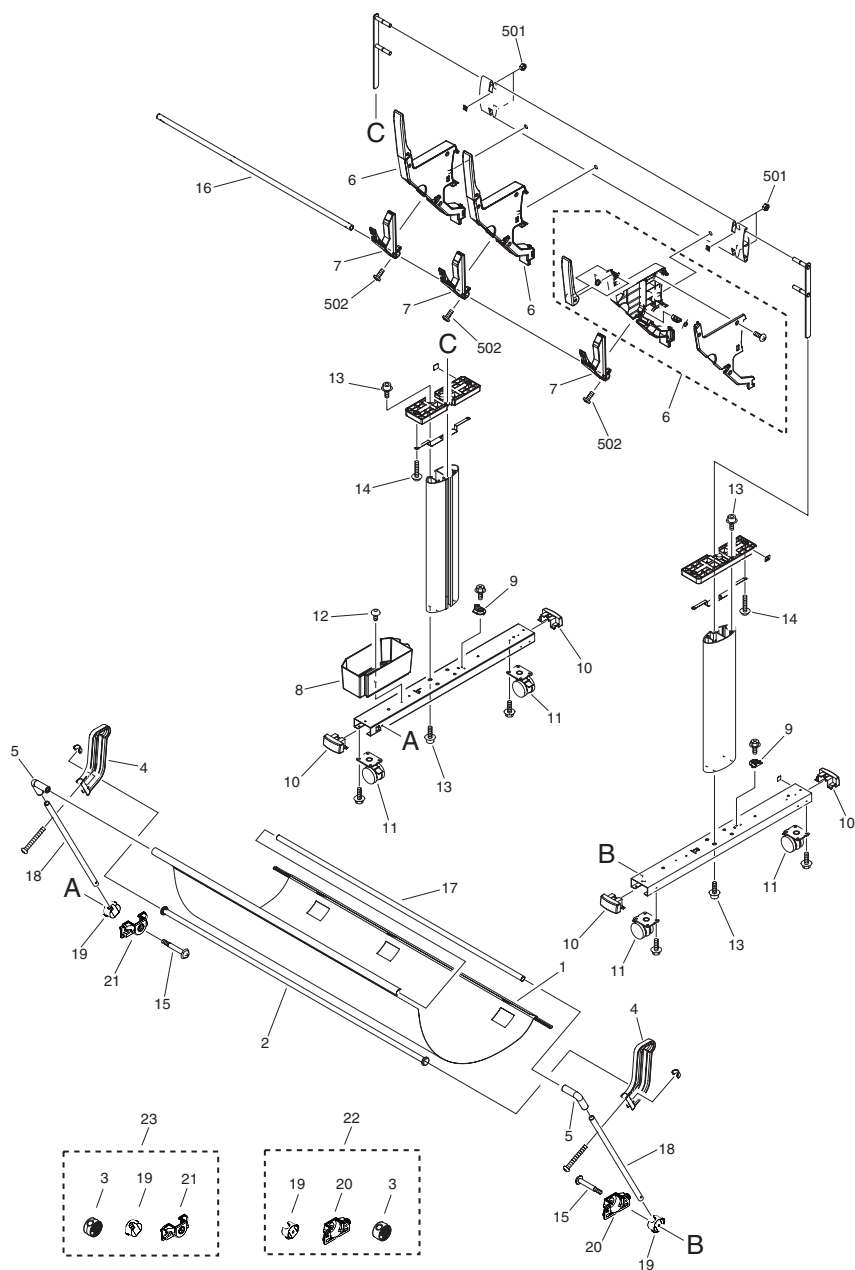
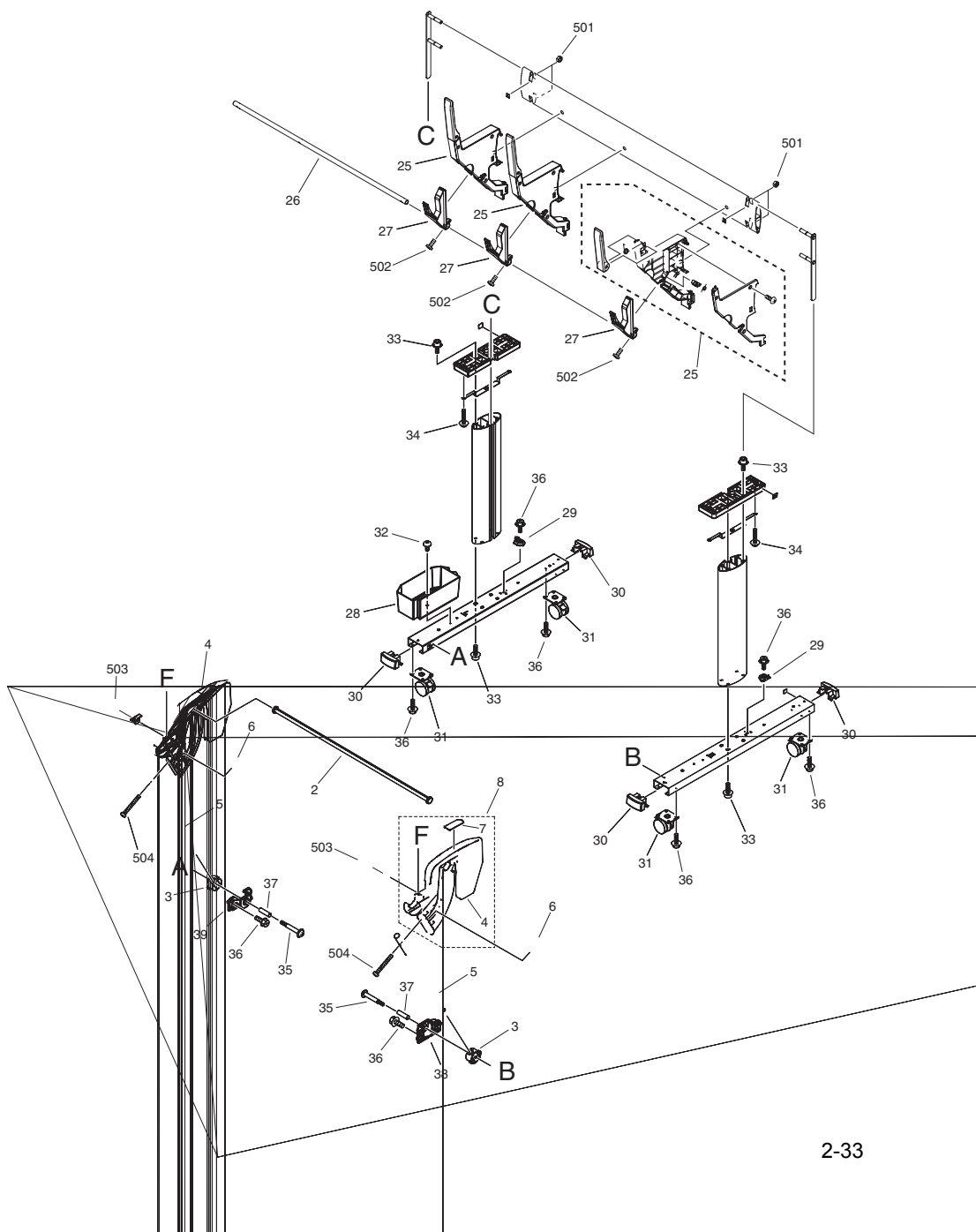


FIGURE & KEY NO.	PARTS NUMBER	R A N K	Q'TY	DESCRIPTION	SERIAL NUMBER/ REMARKS	S V C
Fig.R1	NPN		RF	STAND UNIT ST-33		
1	QC3-1914-000		1	BASKET		
2	QM3-5894-000		1	SUPPORT ROD UNIT		
3	QC3-1739-000		2	SUPPORT, ROD		
4	QC3-1492-000		2	GUIDE, BASKET		
5	QC2-4346-000		2	JOINT, ROD		
6	QM3-5898-000		3	PAPER GUIDE UNIT		
7	QC3-1746-000		3	PAPER STOPPER UNIT		
8	QC3-1731-000		1	BOX, ACCESSORY		
9	QC2-9785-000		2	HOOK, BASKET		
10	QC3-1732-000		4	CAP, STAND		
11	QD1-1095-000		4	CASTER, W/STOPPER		
12	QC2-4116-000		1	SCREW, HEX SOCKET M4X10		
13	QC1-5141-000		16	SCREW,ALLEN,M8X20		
14	QC2-5993-000		4	SCREW, HEX SOCKET, M4X30		
15	QC3-0133-000		2	SCREW, STEPPED, M4		
16	QC3-1747-000		1	ROD, STOPPER 36		
17	QC3-1442-000		1	ROD, AL 36		
18	QC3-1455-000		2	ROD, SIDE AL		
19	QC2-6323-010		2	SUPPORT, ROD		
20	QD1-0005-000		1	HOLDER, ROD, R		
21	QD1-0004-000		1	HOLDER, ROD, L		
22	AY3-4573-000		1	ROD SUPPORT KIT, R		
23	AY3-4574-000		1	ROD SUPORRT KIT, L		
501	XB7-2301-009		4	NUT		
502	XB4-5300-807		12	SCREW, P, M3X8		

FIGURE R2  
STAND UNIT ST-34



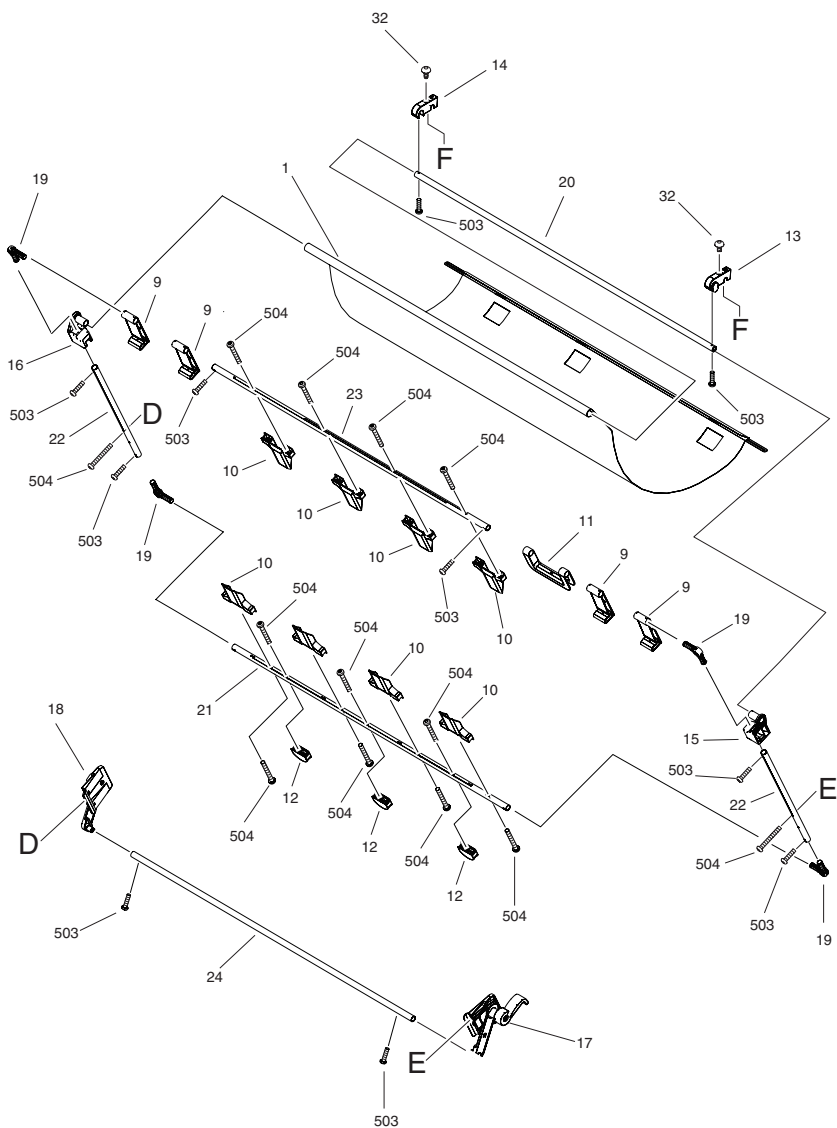


FIGURE & KEY NO.	PARTS NUMBER	R A N K	Q'TY	DESCRIPTION	SERIAL NUMBER/ REMARKS	S V C
Fig.R2	NPN		RF	STAND UNIT ST-34		
1	QC3-1914-000		1	BASKET		
2	QM3-5894-000		1	SUPPORT ROD UNIT		
3	QC2-6323-010		2	SUPPORT, ROD		
4	QC3-1953-000		2	GUIDE, BASKET		
5	QC3-1959-000		2	ROD, SIDE AL		
6	QC3-1850-000		2	PROTECTOR, ROD		
7	QU1-8293-000		1	LABEL, UNLOCK		
8	AY3-4560-000		1	GUIDE, BASKET, R		
9	QC3-1950-000		4	TRAY		
10	QC3-1949-000		8	STOPPER, TRAY		
11	QC3-1971-000		1	HANDLE, BASKET		
12	QC3-1958-000		3	SPACER, BASKET		
13	QC3-1969-000		1	JOINT, C, R		
14	QC3-1962-000		1	JOINT, C, L		
15	QC3-1948-000		1	JOINT, SLIDE, R		
16	QC3-1947-000		1	JOINT, SLIDE, L		
17	QM3-5997-000		1	LINK ARM UNIT (R)		
18	QM3-5996-000		1	LINK ARM UNIT (L)		
19	QC3-1946-000		4	JOINT, ROD		
20	QC3-1943-000		1	ROD, AL, A, 36		
21	QC3-1944-000		1	ROD, AL, B, 36		
22	QC3-1945-000		2	ROD, AL, C		
23	QC3-1963-000		1	ROD, AL, D, 36		
24	QC3-1955-000		1	ROD, STOPPER, AL 36		
25	QM3-5898-000		3	PAPER GUIDE UNIT		
26	QC3-1747-000		1	ROD, STOPPER 36		
27	QC3-1746-000		3	PAPER STOPPER UNIT		
28	QC3-1731-000		1	BOX, ACCESSORY		
29	QC2-9785-000		2	HOOK, BASKET		
30	QC3-1732-000		4	CAP, STAND		
31	QD1-1095-000		4	CASTER, W/STOPPER		

FIGURE & KEY NO.	PARTS NUMBER	R A N K	Q'TY	DESCRIPTION	SERIAL NUMBER/ REMARKS	S V C
32	QC2-4116-000		3	SCREW, HEX SOCKET M4X10		
33	QC3-1921-000		16	SCREW, ALLEN, M8X16		
34	QC2-5993-000		4	SCREW, HEX SOCKET, M4X30		
35	QC3-0133-000		2	SCREW, STEPPED, M4		
36	XA9-0949-000		22	SCREW, RS, M4X10		
37	XZ9-0697-000		2	BUSHING		
38	QD1-0005-000		1	HOLDER, ROD, R		
39	QD1-0004-000		1	HOLDER, ROD, L		
501	XB7-2301-009		4	NUT		
502	XB4-5300-807		6	SCREW, P, M3X8		
503	XB4-6301-205		12	SCREW,TAPPING,PAN HEAD,M3X12		
504	XB4-6302-505		27	SCREW,TAPPING,PAN HEAD,M3X25		

# FIGURE ZZA

## MECHANICAL STANDARD PARTS(HOW TO USE)

**Mechanical standard parts**  
機械標準部品

機械標準部品とは  
機械標準部品とは、製品特有の部品ではなく、ねじやワッシャなどキヤノン製品共通で使用されている機械部品（メカ部品）のことです。  
製品のパーツカタログには、機械標準部品のFig. No.や部品番号は記載しておりません。  
ねじや、ワッシャ等の部品番号を調べるときは、機械標準部品のパーツカタログを参照し、部品の形状や大きさから判断し、使用している部品を調べてください。

機械標準部品の材料および表面処理  
機械標準部品の材料および表面処理については、各種部品共通で決められています。  
材料および表面処理が番号で決められている部品については、表1を参照してください。

表1 材料および表面処理

番号	材料	表面処理	色
	ステンレス	ステンレス黒着色(BC4)	黒
		なし	白
	黄銅	普通ニッケルメッキ(NL)	白
		黒色ニッケルメッキ(BN)	黒
	鋼	白色亜鉛3価クロメート(ZC3)	白
		普通ニッケルクロムメッキ(NC)	白
		普通ニッケルメッキ(NL)	白
		鉄鋼燐酸塩処理(P1)	黒
		黒色亜鉛3価クロメート(BZ3)	黒

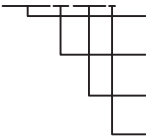
# FIGURE ZZB

## MECHANICAL STANDARD PARTS(SCREWS)

### 1. Screws ねじ

部品番号の見方

ねじ



類別番号

ねじの呼び(d)

( )

ねじの長さ(L)

材料および表面処理

( )

XB1-2は、バインドねじを表す

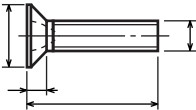
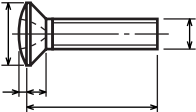
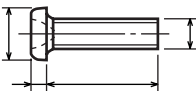
40は、M4.0を表す

0-60は、6.0mmの長さを表す

9は、表1より鋼(黒色亜鉛3価クロメート)を表す

#### 1-1. Cross Recessed Head Screws for Precision Equipments

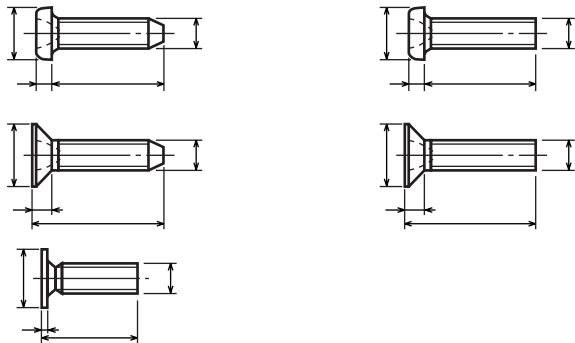
精密機器用十字穴付き小ねじ



Type No. 類別番号	Type 類別
XA1-1	なべ1種
XA1-3	さら1種
XA1-4	丸さら1種
XA1-6	なべ3種
XA1-7	なべ2種

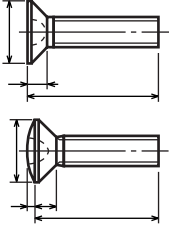
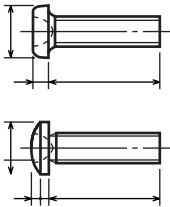
		頭部寸法 (mm)					
D	XA1-1						
H	XA1-1						
D	XA1-3						
H	XA1-3						
D	XA1-4						
H + K	XA1-4						
D	XA1-6						
H	XA1-6						
D	XA1-7						
H	XA1-7						

1-2. Precision Tapping Screws  
精密用タッピンねじ



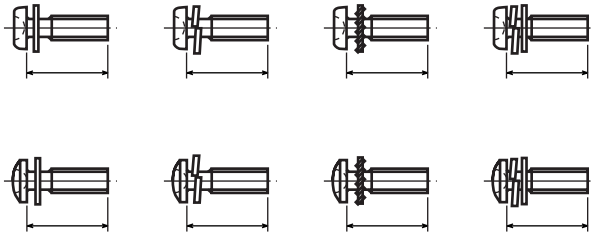
Type No. 類別番号	Type 類別	頭部寸法 (mm)					
XA4-1	絞り-なべ1種	D XA4-1					
		H XA4-1					
XA4-2	絞り-なべ3種	D XA4-2					
		H XA4-2					
XA4-3	絞り-さら	D XA4-3					
		H XA4-3					
XA4-4	絞り-なべ2種	D XA4-4					
		H XA4-4					
XA4-5	ストレート-超薄頭	D XA4-5					
		H XA4-5					
XA4-6	ストレート-なべ1種	D XA4-6					
		H XA4-6					
XA4-7	ストレート-なべ3種	D XA4-7					
		H XA4-7					
XA4-8	ストレート-さら	D XA4-8					
		H XA4-8					
XA4-9	ストレート-なべ2種	D XA4-9					
		H XA4-9					

**1-3. Cross Recessed Head Screws**  
 一般用十字穴付き小ねじ



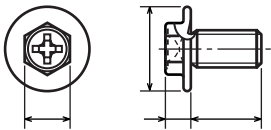
Type No. 類別番号	Type 類別	頭部寸法 (mm)					
XB1-1	なべ	d <sub>k</sub> XB1-1					
		k XB1-1					
XB1-2	バインド	d <sub>k</sub> XB1-2					
		k+f XB1-2					
XB1-3	さら	d <sub>k</sub> XB1-3					
		k XB1-3					
XB1-4	丸さら	d <sub>k</sub> XB1-4					
		k+f XB1-4					
ねじ部長さ b							

**1-4. Cross Recessed Head Screws with Captive Washer**  
 座金組込み十字穴付き小ねじ



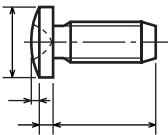
Type No. 類別番号	Type 類別
XB2-1	なべねじ+平座金
XB2-2	なべねじ+ばね座金
XB2-3	なべねじ+歯付座金
XB2-4	なべねじ+(ばね+平)座金
XB2-5	バインドねじ+平座金
XB2-6	バインドねじ+ばね座金
XB2-7	バインドねじ+歯付座金
XB2-8	バインドねじ+(ばね+平)座金

1-5. Hexagon Head Tapping Screws for Matallic Materials  
 金属用六角タッピンねじ



Type No. 類別番号	Type 類別	頭部寸法 (mm)	
XB3-6	金属用タッピン	D	
		B	
XB3-7	金属用タッピン-つめ付き	H XB3-6	
		H XB3-7	

1-6. Special Tapping Screws  
 特殊タッピンねじ



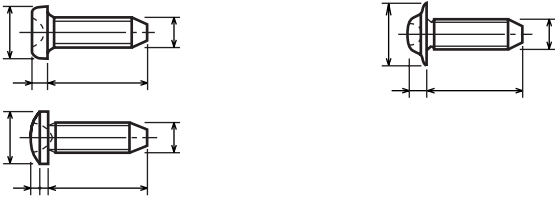
Type No. 類別番号	Type 類別	頭部寸法 (mm)	
XB4-5	バインド	d <sub>k</sub>	
		k	
		k+f	

1-7. General Head Tapping Screws  
 一般用タッピンねじ



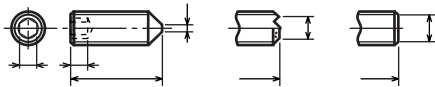
Type No. 類別番号	Type 類別	頭部寸法 (mm)					
		$d_k$	$k$	$d_k$	$k+f$	$d_k$	$k$
XB4-6	なべ	XB4-6					
XB4-7	バインド	XB4-7					
XB4-8	さら	XB4-8					

1-8. Tapping Screws for Metallic Materials  
 金属用タッピンねじ



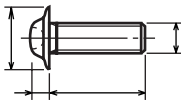
Type No. 類別番号	Type 類別	頭部寸法 (mm)					
		$d_k$	$k$	$d_k$	$k+f$	$d_k$	$k$
XB5-1	なべ	XB5-1					
XB5-2	バインド	XB5-2					
XB5-6	つば付きなべ	XB5-6					

1-9. Hexagon Socket Set Screws  
六角穴付き止めねじ



		頭部寸法 (mm)					
Type No. 類別番号	Type 類別	S					
XB6-1	とがり先	t					
		d <sub>t max</sub> XB6-1					
XB6-2	ダブルポイント	d <sub>t max</sub> XB6-2					
		d <sub>t min</sub> XB6-2					
XB6-3	平先	d <sub>p max</sub> XB6-3					
		d <sub>p min</sub> XB6-3					

1-10. Flanged Pan Head Machine Screws  
つば付きなべ小ねじ

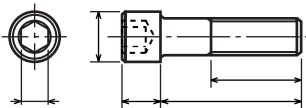


		頭部寸法 (mm)				
Type No. 類別番号	Type 類別					
XB6-7	つば付きなべ	d <sub>k</sub>				
		k				

FIGURE ZZC  
MECHANICAL STANDARD PARTS(BOLTS)

ボルト

2-1. Hexagon socket head cap screws  
六角穴付きボルト



Type No. 類別番号	Type 類別
XB7-1	六角穴付きボルト

頭部寸法 (mm)					
ねじ部長さ $b_{max}$					

# FIGURE ZZD

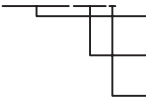
## MECHANICAL STANDARD PARTS(NUTS)

### 3. Nuts

ナット

部品番号の見方

ナット



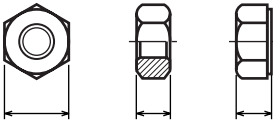
類別番号  
ねじの呼び (d) ( )

材料および表面処理

XB7-210は、六角ナット1種を表す  
0-30は、M3.0を表す  
9は、表1より鋼(黒色亜鉛3価クロメート)を表す

#### 3-1. Hexagon Nuts and Hexagon Thin Nuts

六角ナット



Type No. 類別番号	Type 類別
XB7-210	六角ナット-1種
XB7-220	六角ナット-3種
XB7-230	六角ナット-スタイル1-両面とり
XB7-231	六角ナット-スタイル1-座付き
XB7-240	六角ナット-スタイル2-両面とり
XB7-241	六角ナット-スタイル2-座付き
XB7-250	六角ナット
XB7-260	六角低ナット-両面とり
XB7-270	六角低ナット-面とり無し

		頭部寸法 (mm)					
S							
m	XB7-210						
m	XB7-220						
m	XB7-230, 231						
m	XB7-240, 241						
m	XB7-250						
m	XB7-260						
m	XB7-270						

# FIGURE ZZE

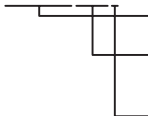
## MECHANICAL STANDARD PARTS(RETAINING RINGS)

### 5. Retaining Rings

止め輪

部品番号の見方

Retaining Rings  
止め輪



類別番号

呼び

材料および表面処理

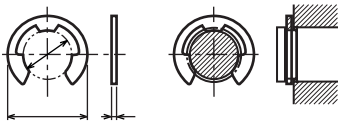
XD2-110は、E形止め輪(1種)を表す

0-20は、呼び020を表す(表5参照)

2は、表1よりステンレス(表面処理なし)を表す

#### 5-1. Retaining Rings - E type

E形止め輪



Type No. 類別番号	Type 類別
XD2-110	E形止め輪(1種)
XD2-120	E形止め輪(2種)

表5

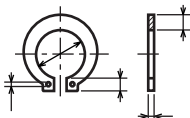
種類	呼び			
種				
種				

[illegible]

Technical drawing of a circular part. The front view (left) shows a circle with a central hole and a cross-section. The side view (right) shows the profile of the part, indicating a thickness.

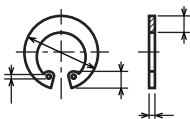
[illegible]

C形止め輪



Type No. 類別番号	Type 類別
XD2-310	C形止め輪 軸用

表5

[illegible]

Type No. 類別番号	Type 類別
XD2-320	C形止め輪 穴用

表5

[illegible]



Prepared by  
L Printer Quality Assurance Center  
CANON INC.

**Canon**