



NB: Part Number rationalisation – 10 digit part numbers in brackets are the old numbers for otherwise identical items

STYLUS CX5400

Page No.:1

REF.	PART NO	DESCRIPTION	SPEC	QTY
100	1267103	SCANNER UNIT COVER;		1
101	1230246	UPPER CASE ASSY.,	60.S1512.001	1
102	1267161	CONTROL PANEL COVER SILVER ENGLISH	ACCESSORY NOT A SPARE	1
104	1230251	PANEL BUTTON,RIGHT (RUBBER)	47.S1505.002	1
105	1230250	PANEL BUTTON,MIDDLE (RUBBER)	47.S1504.001	1
106	1230249	PANEL BUTTON,LEFT (RUBBER)	47.S1503.001	1
107	1250248	COVER,MIDDLE;EDG2		1
108	1113223	COVER,FFC;ECG		1
109	1267347	HOUSING,MIDDLE;		1
110	1113226	LOCK,SCANNER		1
111	1267341	COVER,INK TUBE;ENN3		1
112	1263310	HOUSING,LOWER,B;ENN3		1
113	1213017	COMPRESSION SPRING,6.0		1
114	1040649	LOCK,STACKER		1
115	1217084	FOOT		10
116	1267345	COVER,LOWER;ENN3		1
117	1270212	STACKER ASSY,ASP		1
118	1153811	LOGO PLATE,10X40;G		1
120	1005019	C.B.P-TITE SCREW,3X8,F/ZN	M3X8 F/ZN	2
121	1012350	C.B.P-TITE,3X10,F/ZN		7
122	1048799	C.B.P-TITE SCREW,3X16,F/ZN		2
123	1001533	C.B.S. SCREW	M3X8	1
124	1243685	LEVER OPEN;B		1
125	1113224	OPTICAL TUBE		1
126	1073165	C.B.S. SCREW(B300204211)	M3X6	8
127	1230252	HINGE DOCUMENT,LEFT	42.S1504.001	1
128	1230253	HINGE DOCUMENT,RIGHT,	42.S1505.001	1
129	1073172	C.B.S. SCREW(B300204411)	M3X10	1
130	1073171	C.B.S. SCREW(B300204311)	M3X8	1
131	1267344	COVER,ENTRANCE;EFS3		1
132	1267343	PAPER SUPPORT;ENN3		1
133	1154724	SHIELD PLATE,M/B		1
134	1154725	SHIELD PLATE,M/B,SUPPORT		1
135	1218417	SHEET,LCD		1
180	1213022	LABEL,INK MARK		1
181	1230931	LABEL,HEAD CLEANING		1
450	2080377	PANEL BOARD	60.S1515.001	1
200	2084394	BOARD ASSY.,MAIN	5918E,C549 STANDARD(SI-CAV)	1
300	1230266	POWER SUPPLY BOARD ASSY.220,ASP		1
IC5	2049658	OTP-ROM(BLANK)	OTHER,8MBIT,80N/SEC,	1
500	2086076	PRINTER MECHANISM(ASP)		1
501	1270216	ROLLER,PF ASSY.,ASP		1
502	1270584	MOTOR ASSY.,PF ASP		1
503	1108712	EXTENSION SPRING,4.07		4
504	2071787	BOARD ASSY.,ENCODER,PF	,	1
505	1214696	MOUNTING PLATE,BOARD ASSY.,ENCODER,B		1
506	1006058	CUP SCREW(B040302311)	M3X4	3
507	1042582	GROUNDING WIRE,EJ		1
508	1250581	PAPER EJECT ASSY.,ASP;B		1
509	1213603	ROLLER,EJ ASSY.,ASP		1



NB: Part Number rationalisation – 10 digit part numbers in brackets are the old numbers for otherwise identical items

STYLUS CX5400

Page No.:2

REF.	PART NO	DESCRIPTION	SPEC	QTY
510	1108633	HOLDER,ROLLER ASSY.,EJ		3
511	1249460	INK SYSTEM ASSY.,ASP;B		1
512	1175070	CLAMP,TUBE		1
513	2071401	CABLE,HEAD		1
514	1080394	POROUS PAD,CABLE,HEAD		1
515	1108672	SHAFT,CR,GUIDE		1
516	1270585	MOTOR ASSY.,CR ASP		1
517	1032300	C.B.S-TITE(P4),3X6,F/ZN		2
518	1108681	BUSHING,PARALLER ADJUST,LEFT		1
519	1270542	PAPER GUIDE FRONT ASSY.,ASP		1
520	1154212	EXTENSION SPRING,2.94		1
521	1218159	SCALE,CR		1
522	1250582	CARRIAGE ASSY.,ASP;B		1
523	1112562	HOLDER,HEAD,CABLE		1
524	1108718	TORSION SPRING,67.87		1
525	1154730	LEVER,PG		1
526	1108682	BUSHING,PARALLER ADJUST,RIGHT		1
527	1108612	HOLDER,DETECTOR,PE		1
528	1108623	LEVER,DETECTOR,PE		1
529	1108714	TORSION SPRING,0.28		1
530	2032843	DETECTOR,HP;F	4V,50MA,100MW	1
531	1073165	C.B.S. SCREW(B300204211)	M3X6	1
532	1073171	C.B.S. SCREW(B300204311)	M3X8	1
533	1232850	SUPPORT PLATE,HOLDER, STAR WHEEL		1
534	1246089	SHEET,PROTECT,SCALE,CR		1
535	1108688	SHEET,CABLE,HEADE		1
536	1114067	HOLDER,HEAD CABLE,FM		1
537	1108673	LEAF SPRING,CARTRIDGE		1
538	1214783	FASTNER,HEAD		1
539	1043325	C.B.P-TITE(P2)SCREW,3X10,F/ZN		2
700	F146010	PRINT HEAD	360	1
701	1270543	ASF UNIT,ASP		1
702	1024130	C.B.P-TITE SCREW,3X6,F/ZN		2
703	1082065	COMPRESSION SPRING,5.61		1
704	1084662	FOOT,B		1
705	1270544	HOPPER ASSY.,ASP		1
706	1108716	EXTENSION SPRING,1.19		1
707	1250583	ROLLER,LD ASSY.,ASP;B		1
708	1218042	EXTENSION SPRING,2.25		1
709	1213636	RETARD ASSY.,ASP		1
710	1052673	EXTENSION SPRING,0.143		1
711	1076263	P.W.,3.1X0.5X12,F/ZN (B100165911)		1
712	1005019	C.B.P-TITE SCREW,3X8,F/ZN	M3X8 F/ZN	1
713	1108715	EXTENSION SPRING,0.99		1
714	1114069	POROUS PAD,INK EJECT;D		1
715	1108695	POROUS PAD,INK EJECT;C		1
716	1114071	POROUS PAD,INK EJECT;F		1
717	1265053	POROUS PAD,INK EJECT;I		1
718	1265054	POROUS PAD,INK EJECT;J		1
719	1262923	POROUS PAD,INK EJECT;I		1



NB: Part Number rationalisation – 10 digit part numbers in brackets are the old numbers for otherwise identical items

STYLUS CX5400

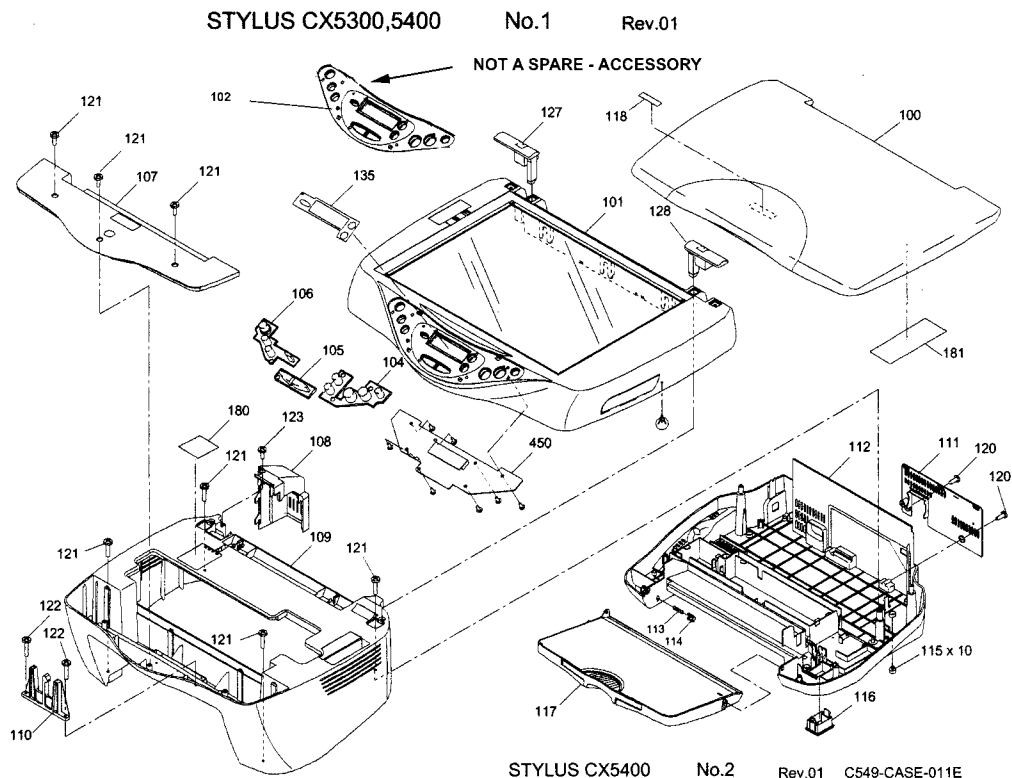
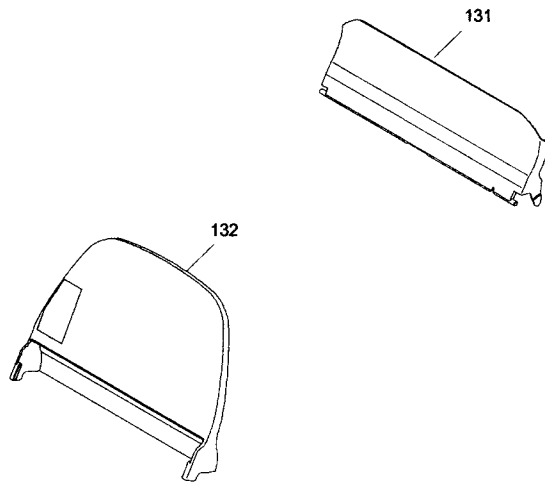
Page No.:3

REF.	PART NO	DESCRIPTION	SPEC	QTY
720	1265055	TUBE,INK EJECT;B		1
721	1214680	POROUS PAD,INK EJECT;H		1
722	1108693	POROUS PAD,INK EJECT		1
723	1215444	STOPPER,PAPER,STACKER		1
724	1214679	CLEANER,HEAD;B,ASP		1
725	1214678	CLEANER,HEAD,ASP		1
726	1235246	POROUS PAD,PAPER GUIDE,LOWER		1
727	1249838	POROUS PAD,HOUSING,MIDDLE		1
800	1267483	SCANNER UNIT		1
801	1261465	CCD MODULE ;B,ASP	60.S1510.003	1
803	1230247	LOWER CASE ASSY.,	60.S1513.001	1
804	1196514	HINGE ASSY.		2
805	1230254	CABLE COVER,PET	40.S1503.001	1
806	1230248	MOTOR SET ASSY.	60.S1514.001	1
N/A	1218433	INK CART. UNBOXED,CYAN		1
N/A	1218434	INK CART. UNBOXED,MAGENTA		1
N/A	1218435	INK CART. UNBOXED,YELLOW		1
N/A	1219447	INK CART. UNBOXED,BLACK		1
N/A	2069716	HARNESS,USB 2.0		1
N/A	1214683	INK SUPPLY TOOL		1
N/A	1214684	S46 EXCHANGE TOOL		1
N/A	1218235	GREASE G-63 40gm		1
08	1220031	SHEET,CR LOCK		1
END				

NB: Part Number rationalisation – 10 digit part numbers in brackets are the old numbers for otherwise identical items

STYLUS CX5400

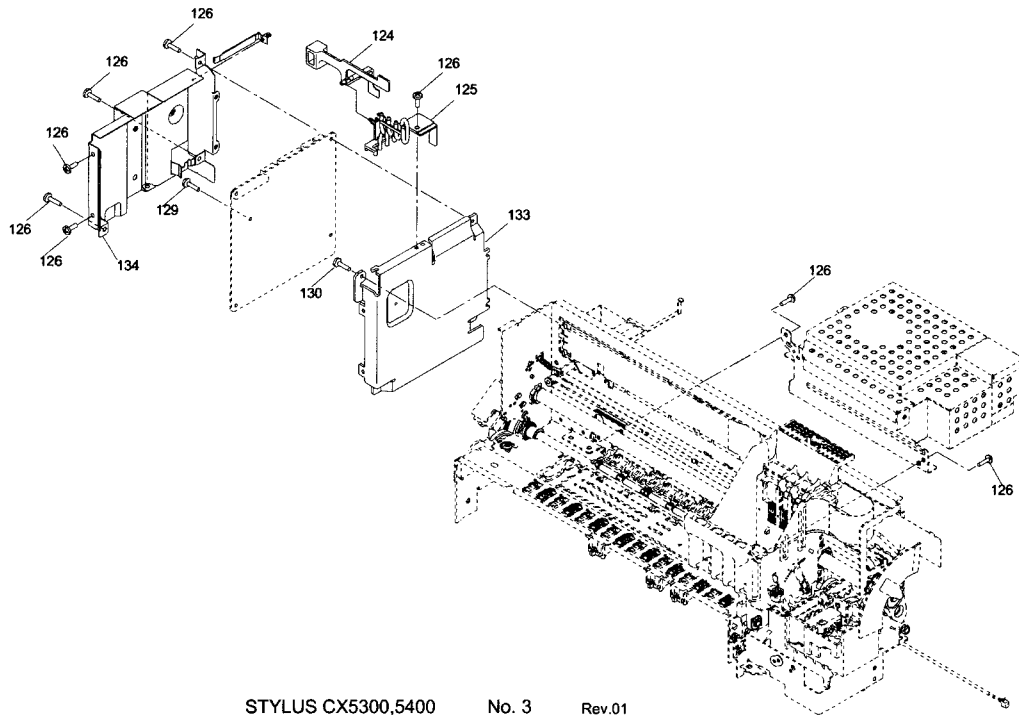
Page No.:4



NB: Part Number rationalisation – 10 digit part numbers in brackets are the old numbers for otherwise identical items

STYLUS CX5400

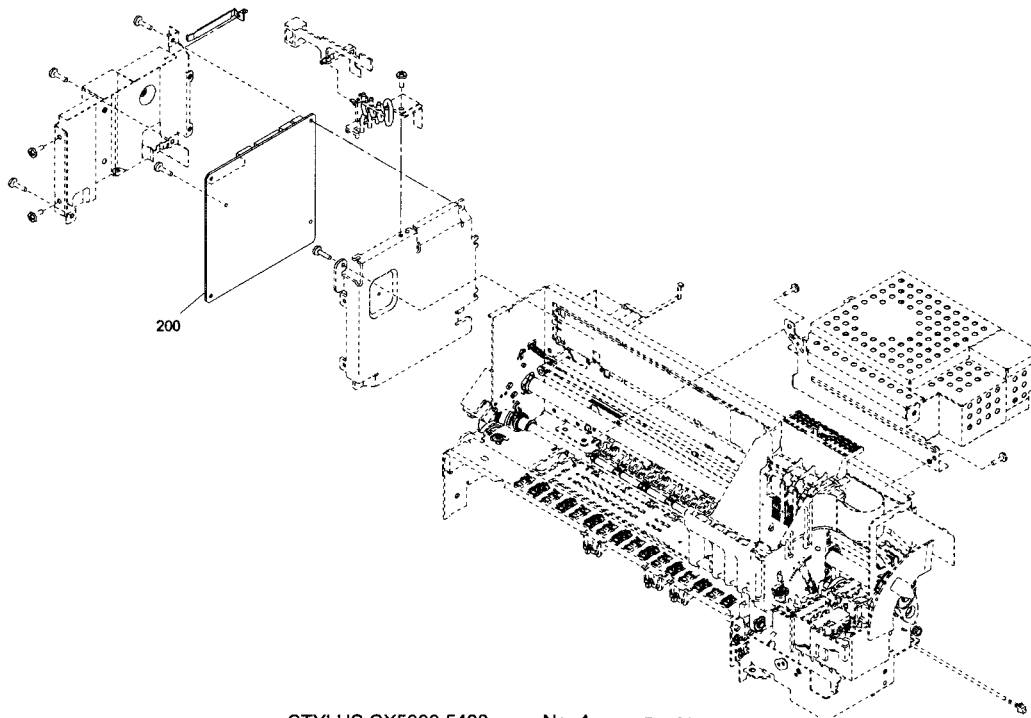
Page No.:5



STYLUS CX5300,5400

No. 3

Rev.01



STYLUS CX5300,5400

No. 4

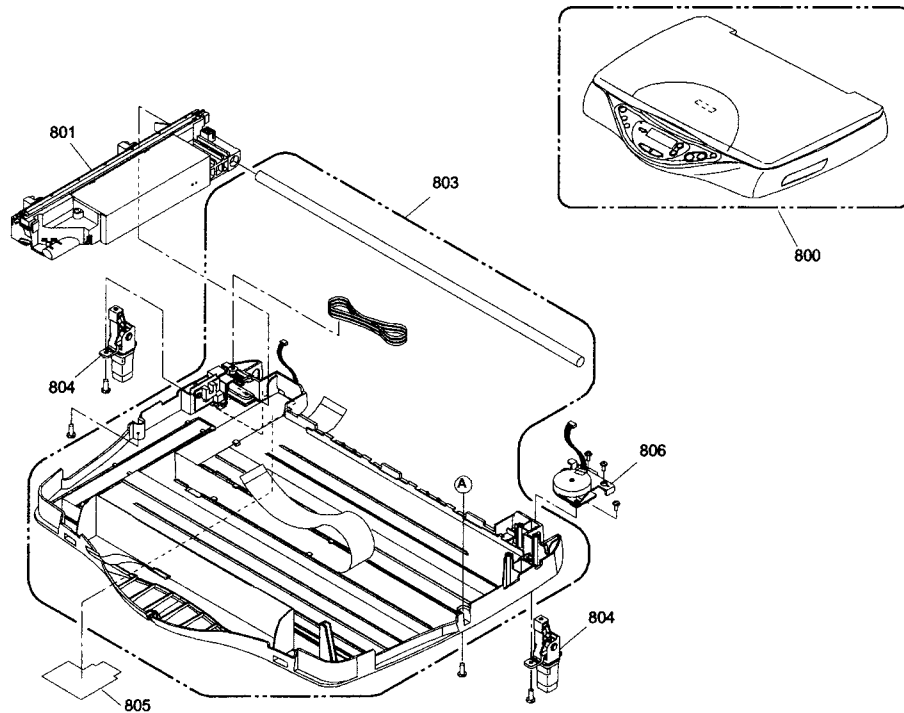
Rev.01

EPSON

NB: Part Number rationalisation – 10 digit part numbers in brackets are the old numbers for otherwise identical items

STYLUS CX5400

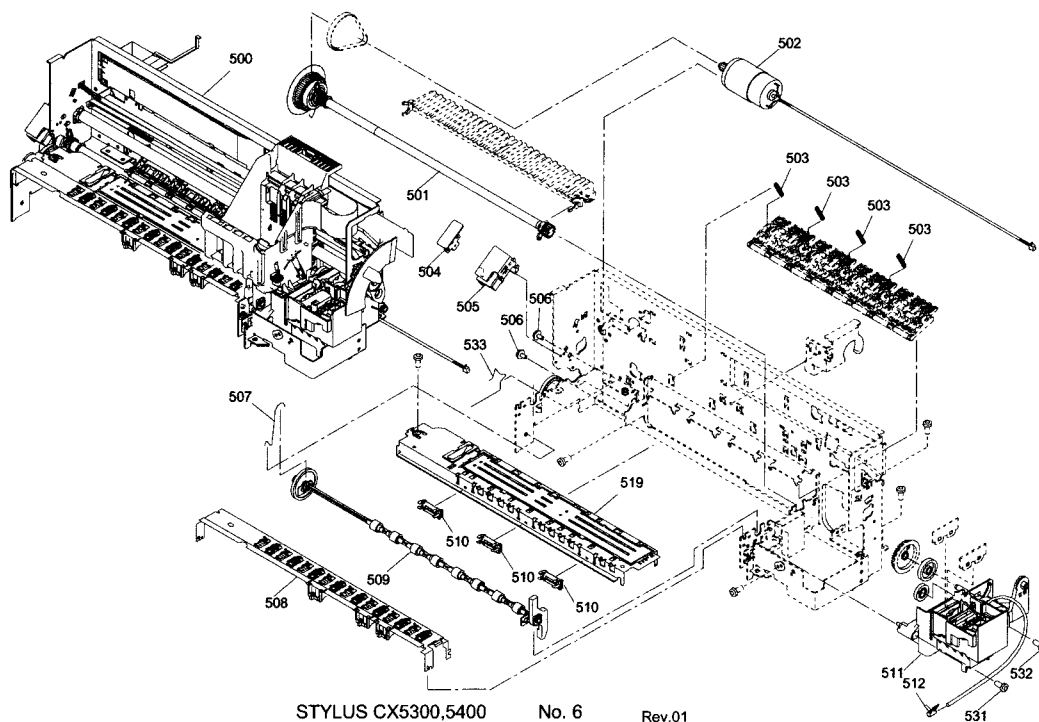
Page No.:6



STYLUS CX5300,5400

No. 5

Rev.01



STYLUS CX5300,5400

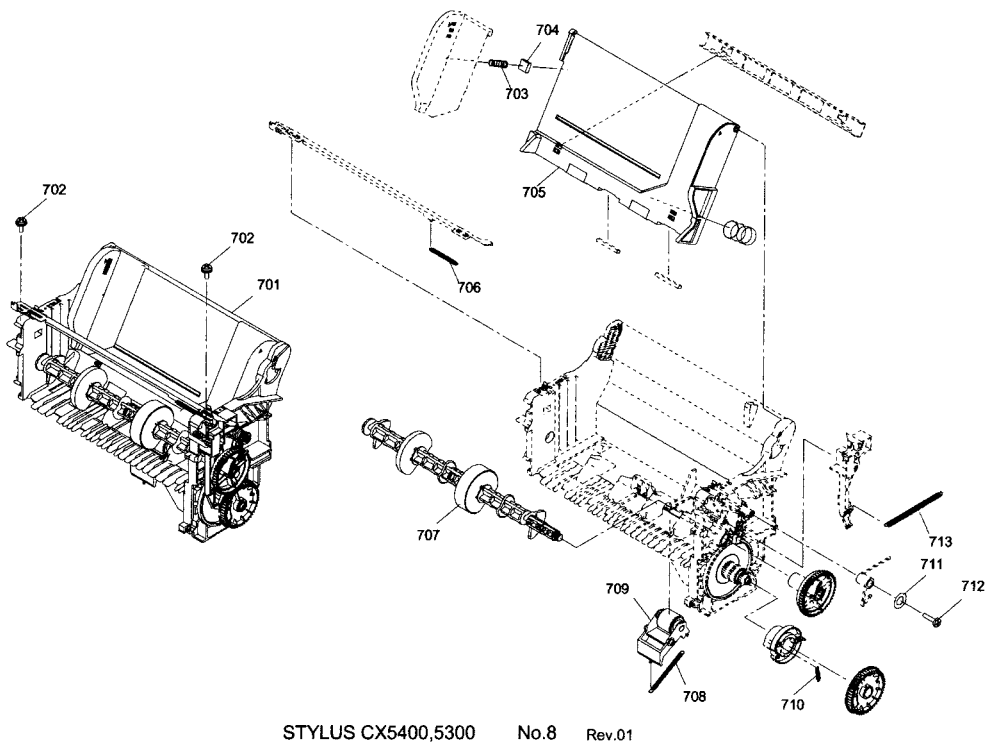
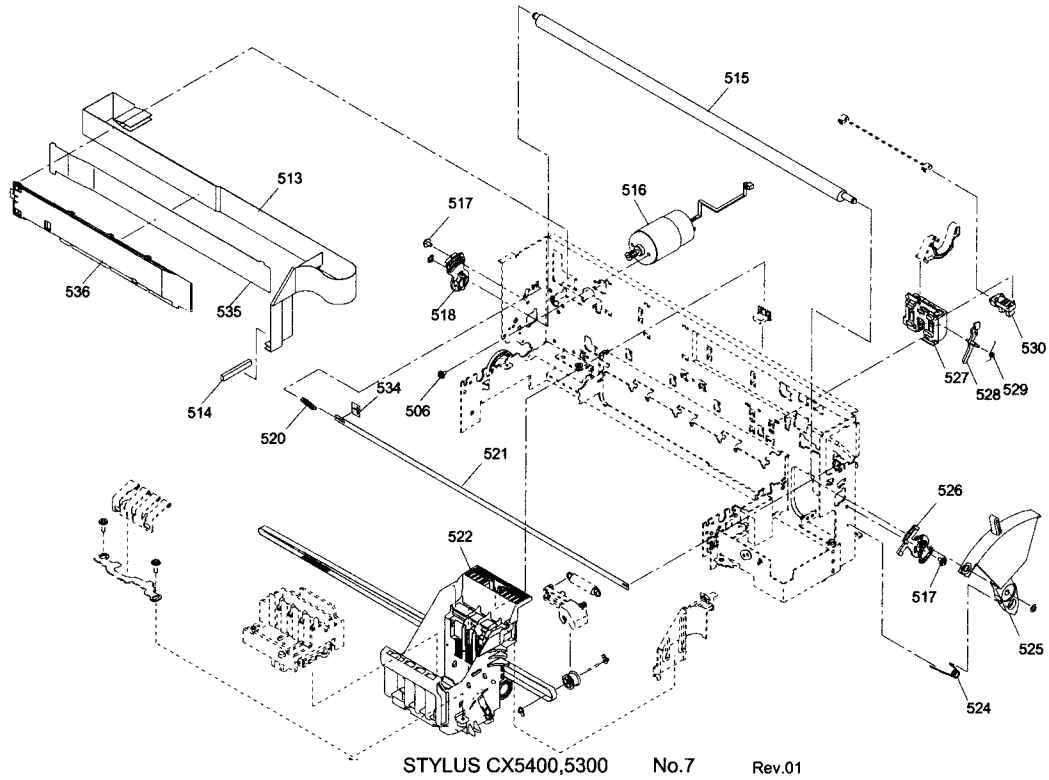
No. 6

Rev.01

NB: Part Number rationalisation – 10 digit part numbers in brackets are the old numbers for otherwise identical items

STYLUS CX5400

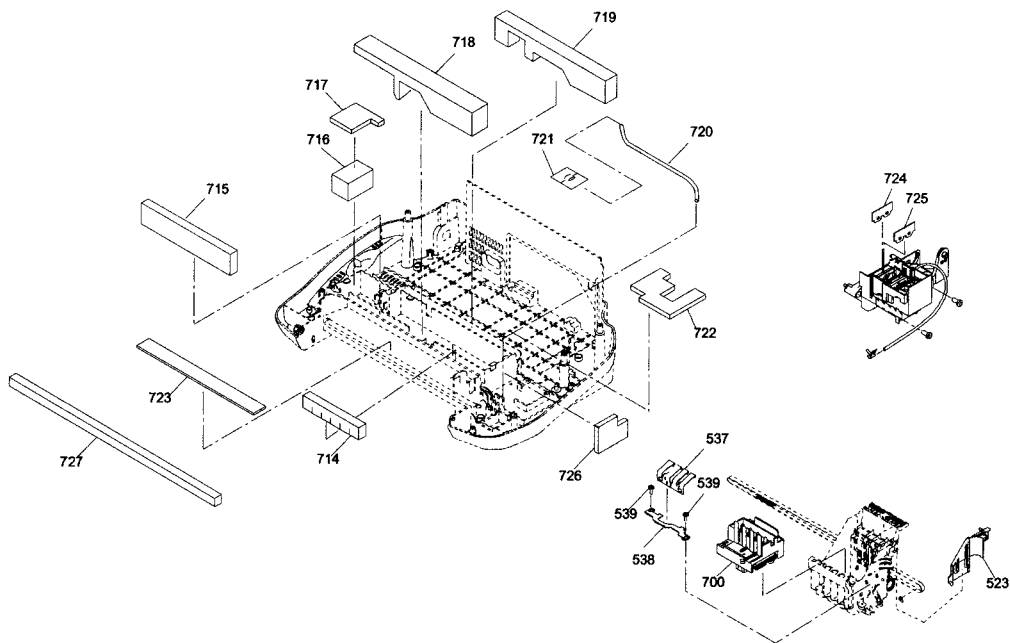
Page No.:7



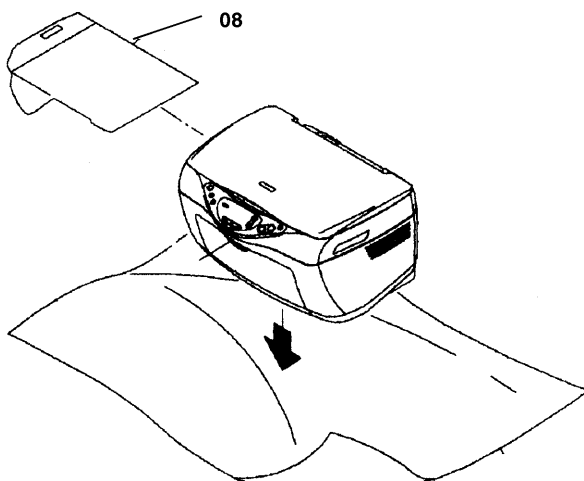
NB: Part Number rationalisation – 10 digit part numbers in brackets are the old numbers for otherwise identical items

STYLUS CX5400

Page No.:8



STYLUS CX5300,5400 No. 9 Rev.01



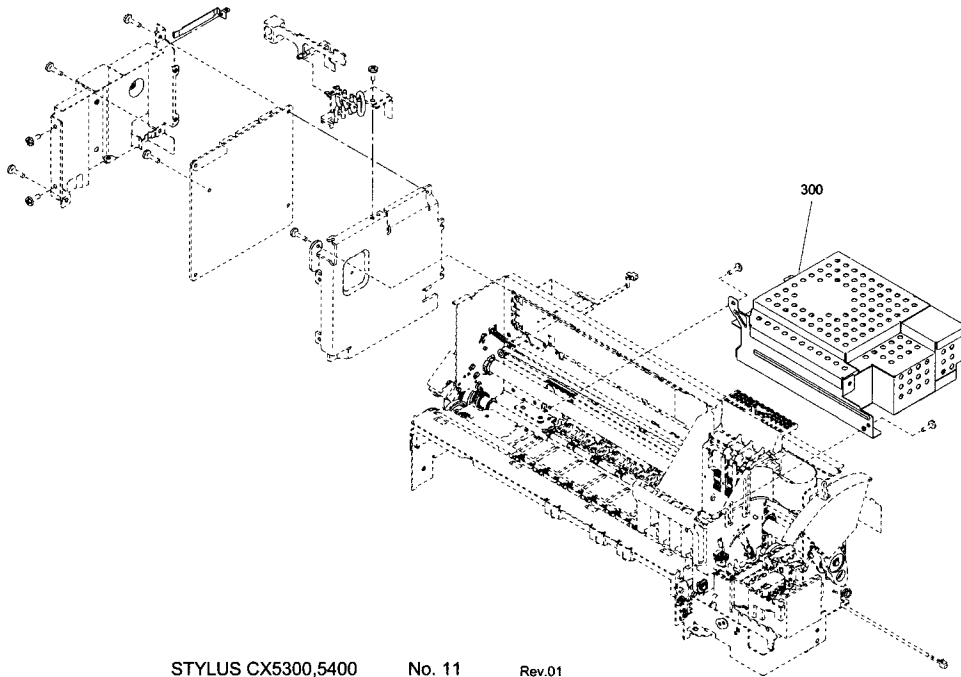
STYLUS CX5300,5400 No. 10 Rev.01

EPSON

NB: Part Number rationalisation – 10 digit part numbers in brackets are the old numbers for otherwise identical items

STYLUS CX5400

Page No.:9



STYLUS CX5300,5400

No. 11

Rev.01