

*NB: Part No. Rationalisation – any 10 digit part numbers in brackets are the old part numbers for otherwise identical components*

## STYLUS CX6400

*Page No.:1*

REF	PART NO	DESCRIPTION	SPEC	QTY
100	1153811	LOGO PLATE,10X40;G		1
101	1271409	LABEL,HEAD CLEANING;C		1
102	1275165	PAPER SUPPORT;ENN3		1
103	1259392	COVER,ASF;EFS3		1
104	1259362	HOUSING,PANEL;ENM3		1
105	1268905	GROUNDING PLATE,PANEL		1
106	1260299	SHIELD PLATE,PANEL		1
107	1259372	KEY TOP,START;EPG2		1
108	1270894	KEY TOP,TEN KEY; GREY		1
109	1270889	KEY TOP,MENU;ENN3		1
110	1270887	KEY TOP,MODE;GREY		1
111	1259373	OPTICAL TUBE,ERROR		1
112	1259366	GUIDE,BUTTON;ENN3		1
113	1269643	COVER,PANEL SILVER ENGLISH	ACCESSORY NOT A SPARE!	1
114	1259383	COVER,IN RET;ENN3		1
115	1259375	HOUSING,LOWER;ENN3		1
116	1047689	FOOT		8
117	1272067	STOPPER,PAPER,STACKER;W		1
118	1259386	STACKER,SUPPORT,UPPER;ENN3		1
119	1259385	STACKER;ENN3		1
120	1259389	STACKER,SUPPORT,MIDDLE;ENN3		1
121	1259393	LOCK,SCANNER,EDG2		2
122	1270066	DAMPER,Y 002P-E		1
123	1267906	SHAFT DAMPER;B		1
124	1267909	TORSION SPRING;B		1
125	1267905	HOLDER,DAMPER		1
126	1267907	LOCK,SLOT COVER		1
127	1261514	OPTICAL TUBE,PC SLOT		1
128	1267910	COVER,PC CARD SUPPORT;L;EFS		1
129	1267911	COVER,PC CARD SUPPORT;R;EFS		1
130	1267903	COVER,PC CADE;B;EFS		1
131	1267904	GUIDE,SHAFT;B;NATURAL		1
132	1274195	PANEL ASSY.,ASP		1
133	1259390	COVER,USB CABLE;ENN3		1
134	1259379	COVER,MIDDLE;ENN3		1
135	1261513	LEVER OPEN		1
136	1260300	PLATE,COVER,MIDDL		1
137	1267861	HOUSING,MIDDLE;B; GREY		1
138	1259380	COVER,FCC;EDG2		1
139	1005019	C.B.P-TITE SCREW,3X8,F/ZN	M3X8 F/ZN	22
140	1012350	C.B.P-TITE,3X10,F/ZN		6
141	1043330	C.B.P-TITE,3X10,F/NI		2
142	1270606	C.B.SCREW,3X16,F/NI		1
143	1273765	C.B.P-TITE SCREW,3X20,F/NI		1
144	1267345	COVER,LOWER;ENN3		1
145	1260309	GROUNDING PLATE;C		1
146	1268977	PRESSING PLATE,FFC		1
147	1260305	SHIELD PLATE,M/B,UPPER		1
148	1260304	SHIELD PLATE,M/B;B		1
149	1260303	SHIELD PLATE,M/B		1
150	1073165	C.B.S. SCREW(B300204211)	M3X6	5
151	1004635	C.B.SCREW(B010303311)	M3X6	9
152	1001275	C.B.SCREW(B010303511)	M3X10	1
155	2086101	I/F CABLE	USB2.0	1
157	1272897	DOUBLE-SIDED TAPE,8X30		1

*NB: Part No. Rationalisation – any 10 digit part numbers in brackets are the old part numbers for otherwise identical components*

## STYLUS CX6400

Page No.:2

REF	PART NO	DESCRIPTION	SPEC	QTY
200	2083681	BOARD ASSY.,MAIN	5973A,STANDARD	1
300	1273931	P/S BOARD ASSY.,220,ASP		1
450	2083683	BOARD ASSY.,PANEL	5974A,STANDARD	1
451	2083911	HARNESS	PANEL FFC	1
452	2014112	FERRITE CORE,SSC-40-12-F		1
500	2086676	PRINTER MECHANISM(ASP)		1
501	1213602	ROLLER,PF ASSY.,ASP		1
502	1273928	MOTOR ASSY.,PF,ASP		1
503	1108712	EXTENTION SPRING,4.07		4
504	1264522	FAN ASSY.,B		1
505	1260323	DUCT,FAN		1
506	1270607	C.B.P-TITE SCREW,3X22,F/ZN		2
507	1275029	CLEANER,HEAD;B,ASP		1
508	1214679	CLEANER,HEAD;B,ASP		1
509	1273922	INK SYSTEM ASSY.,ASP		1
510	1273923	PAPER GUIDE,FRONT ASSY.,ASP		1
511	1213603	ROLLER,EJ ASSY.,ASP		1
512	1276474	EJ ASSY.,ASP;C		1
513	1042582	GROUNDING WIRE,EJ		1
514	1235248	GROUNDING SPRING,ROLLER,PF		1
515	1262622	MNTNG PLATE,BOARD ASSY.,ENCODER		1
516	2084554	BOARD ASSY.,ENCODER,PF		1
517	2084222	HARNESS,ENCODER		1
518	2032843	DETECTOR,HP;F	4V,50MA,100MW	1
519	1108714	TORSION SPRING,0.28		1
520	1108623	LEVER,DETECTOR,PE		1
521	1260315	LEVER,PG		1
522	1080399	SPACER,4.1X0.5,L/NA		2
523	1108718	TORSION SPRING,67.87		1
524	1076289	LEAF SPRING(B101254590)	6.2X0.15X11	2
525	1108682	BUSHING,PARALLEL ADJUST,RIGHT		1
526	1032300	C.B.S-TITE(P4),3X6,F/ZN		3
527	1108672	SHAFT,CR,GUIDE		1
528	1273927	MOTOR ASSY.,CR,ASP		1
529	1108681	BUSHING,PARALLEL ADJUST,LEFT		1
530	1048921	SCALE,CR		1
531	1154212	EXTENSION SPRING,2.94		1
532	1260314	HOLDER,HEAD CABLE		1
533	1273920	CARRIAGE ASSY.,ASP		1
534	1268906	LOCK LEVER,INK CARTRIDGE		1
535	1260312	COVER,INK CARTRIDGE		1
536	1214783	FASTENER,HEAD		1
537	2084221	CABLE,HEAD		1
538	1268904	GROUNDING PLATE;D		1
539	1262946	HOLDER,CABLE		1
540	1080394	POROUS PAD,CABLE,HEAD		1
541	1073165	C.B.S. SCREW(B300204211)	M3X6	4
542	1005019	C.B.P-TITE SCREW,3X8,F/ZN	M3X8 F/ZN	2
543	1006058	CUP SCREW(B040302311)	M3X4	3
544	1073844	C.B.S-TITE,3X5,F/ZN(B043700511)	M3X5 F/ZN	2
545	1043325	C.B.P-TITE(P2)SCREW,3X10,F/ZN		2
546	1108612	HOLDER,DETECTOR,PE		1
547	1268907	CLAMP,CABLE		1
548	1175070	CLAMP,TUBE		1
700	F146010	PRINT HEAD	360	1

*NB: Part No. Rationalisation – any 10 digit part numbers in brackets are the old part numbers for otherwise identical components*

## STYLUS CX6400

Page No.:3

REF	PART NO	DESCRIPTION	SPEC	QTY
701	2084512	HARNESS,PG		1
702	1268908	GUIDE,HARNESS,PG		1
703	1271413	LABEL,INK CARTRIDGE		1
704	1270544	HOPPER ASSY.,ASP		1
705	1084662	FOOT,B		1
706	1082065	COMPRESSION SPRING,5.61		1
707	1108716	EXTENSION SPRING,1.19		1
708	1108715	EXTENSION SPRING,0.99		1
709	1213636	RETARD ASSY.,ASP		1
710	1052673	EXTENSION SPRING,0.143		1
711	1218042	EXTENSION SPRING,2.25		1
712	1250583	ROLLER,LD ASSY.,ASP;B		1
713	1273924	ASF UNIT,WW,ASP		1
714	1261215	POROUS PAD,INK EJECT,B-1		1
715	1265055	TUBE,INK EJECT;B		1
716	1214680	POROUS PAD,INK EJECT;H		1
717	1261214	POROUS PAD,INK EJECT,A		1
718	1235246	POROUS PAD,PAPER GUIDE,LOWER		1
719	1261219	POROUS PAD,INK EJECT,E		2
720	1261221	POROUS PAD,INK EJECT,G		1
721	1261220	POROUS PAD,INK EJECT,F		2
723	1261218	POROUS PAD,INK EJECT,D		2
724	1261217	POROUS PAD,INK EJECT,C		2
725	1269068	MINI CLAMP,MN-2		2
726	2020393	DETECTOR,LEAF,B2	1,0V,0A,	1
800	2086678	SCANNER UNIT,EU,ASP		1
801	1273934	COVER,DOCUMENT ASSY.,EU,ASP		1
802	1260356	HINGE,COVER,DOCUMENT,ENN3		2
803	1043330	C.B.P-TITE,3X10,F/NI		4
804	2084027	FFC,CR		1
805	1273932	CIS ASSY.,ASP		1
806	2085718	EARTH WIRE,SCANNER		1
807	1260328	SPRING,CIS		2
808	1260326	CARRIAGE,MAIN		1
809	1260327	HOLDER,CR		1
810	1268975	FERRITE CORE,FPC-19-20-4.5		1
811	1005019	C.B.P-TITE SCREW,3X8,F/ZN	M3X8 F/ZN	1
812	1260329	CLAMP,BELT		1
813	1260338	SHAFT,CR		1
814	1260337	TIMING BELT		1
815	1260353	WASHER,8.5X2.6X0.5		1
820	1260351	FLANGE,PULLEY		1
821	1260366	HOUSING,LOWER,SC,ENN3		1
822	1260310	HINGE ASSY.		2
823	1268976	FERRITE CORE,FPC-16-12		1
824	2084028	FFC,IDLE		1
825	2084029	BOARD,HP	FOR SCANNER	1
826	1273940	MOTOR ASSY.,ASP		1
826	1273940	MOTOR ASSY.,ASP		1
827	1269192	SHEET,HOUSING,LOWER,SC		2
828	1262626	CUSHION,CR		2
829	1262624	SHEET,COVER,FFC		1
830	1276471	SPACER,FFC		2
831	1269191	DOUBLE-SIDED TAPE,9X9		1
832	1012350	C.B.P-TITE,3X10,F/ZN		8

*NB: Part No. Rationalisation – any 10 digit part numbers in brackets are the old part numbers for otherwise identical components*

## STYLUS CX6400

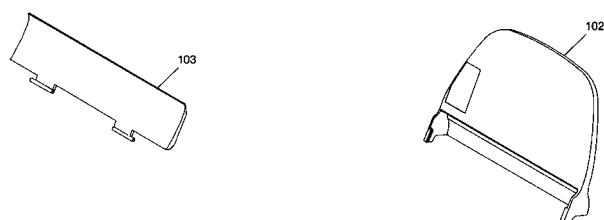
*Page No.:4*

REF	PART NO	DESCRIPTION	SPEC	QTY
F2	2068821	FUSE	,63V,0.375A,	1
N/A	1250714	INK CART. UNBOXED BLACK-L,		1
N/A	1250717	INK CART. UNBOXED MAGENTA-S,		1
N/A	1250718	INK CART. UNBOXED YELLOW-S,		1
N/A	1276744	INK CART. UNBOXED CYAN-S, ,	C-S:BM1/TOGURA-WST-AS	1
END				

*NB: Part No. Rationalisation – any 10 digit part numbers in brackets are the old part numbers for otherwise identical components*

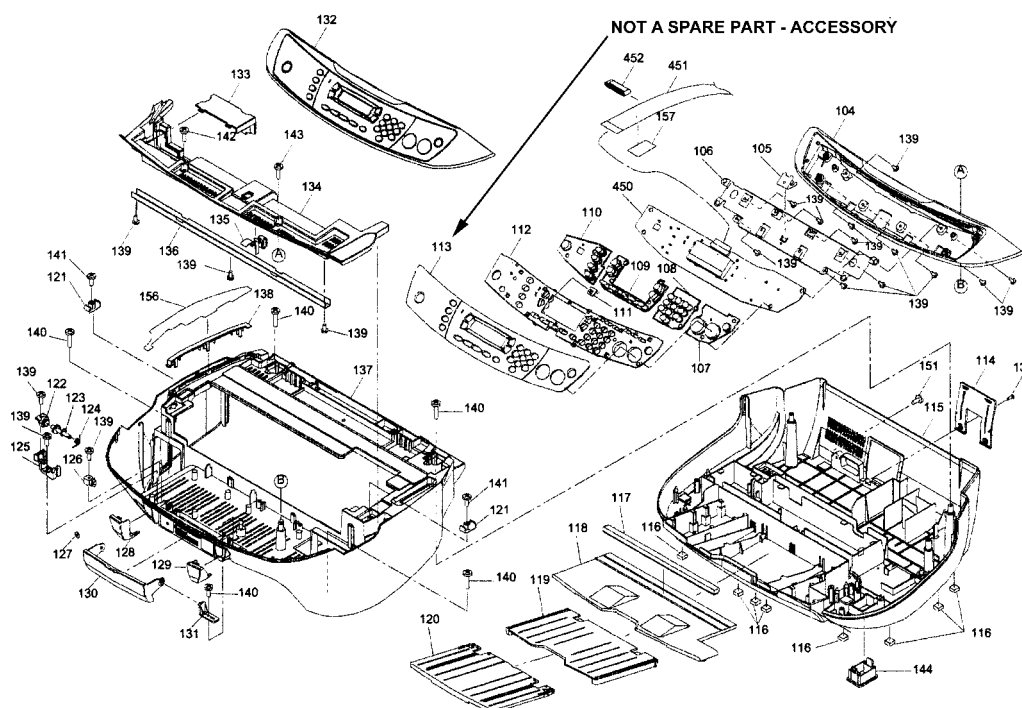
# STYLUS CX6400

Page No.:5



STYLUS PHOTO CX6400

NO.1



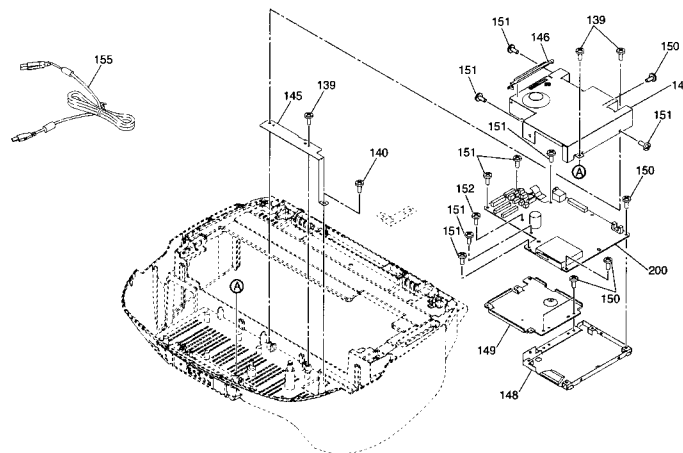
STYLUS PHOTO CX6400,

NO.2

*NB: Part No. Rationalisation – any 10 digit part numbers in brackets are the old part numbers for otherwise identical components*

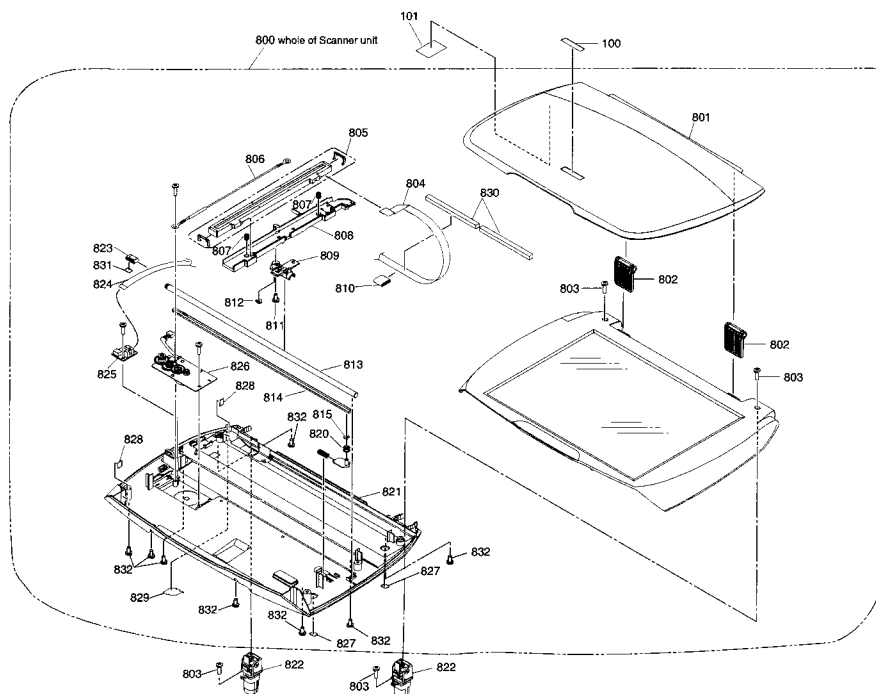
## STYLUS CX6400

Page No.:6



STYLUS PHOTO CX6400

NO.3



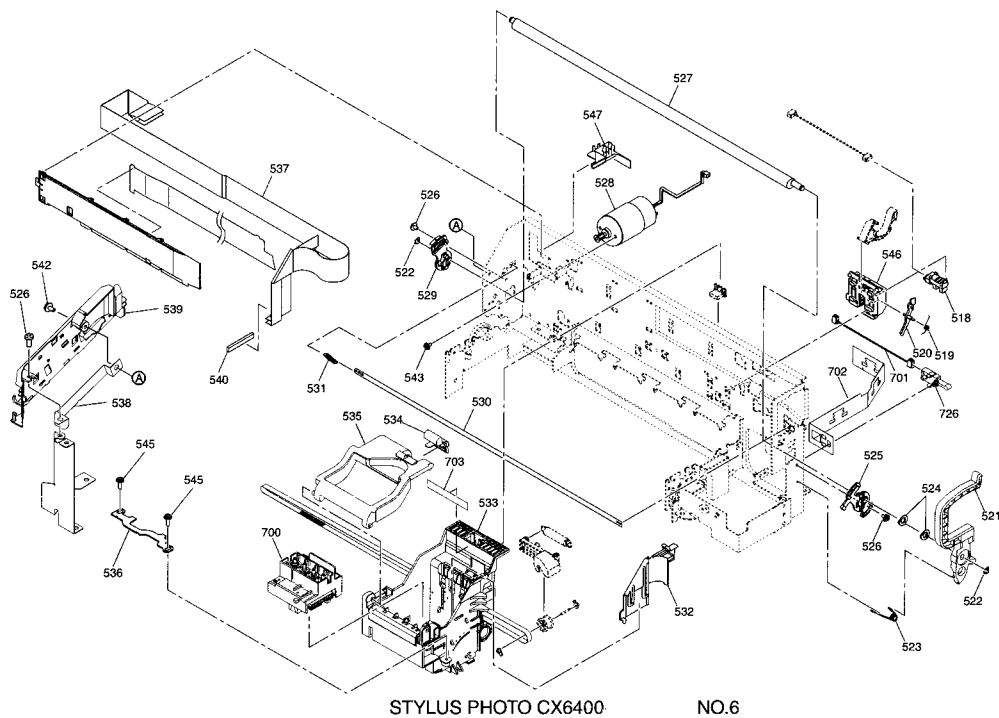
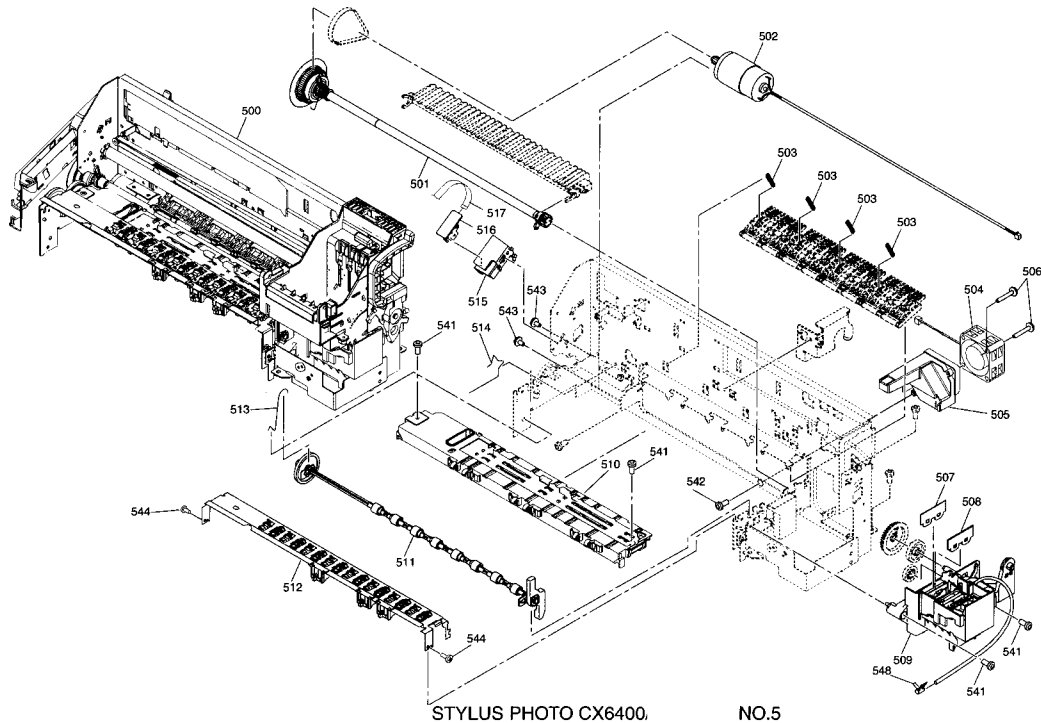
STYLUS PHOTO CX6400

NO.4

*NB: Part No. Rationalisation – any 10 digit part numbers in brackets are the old part numbers for otherwise identical components*

# STYLUS CX6400

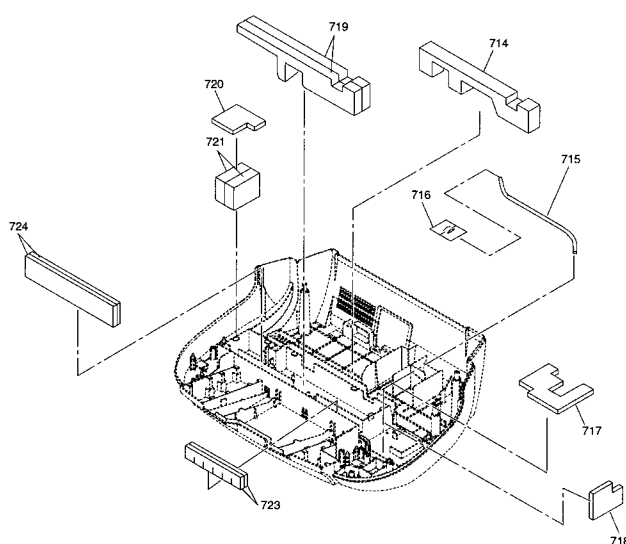
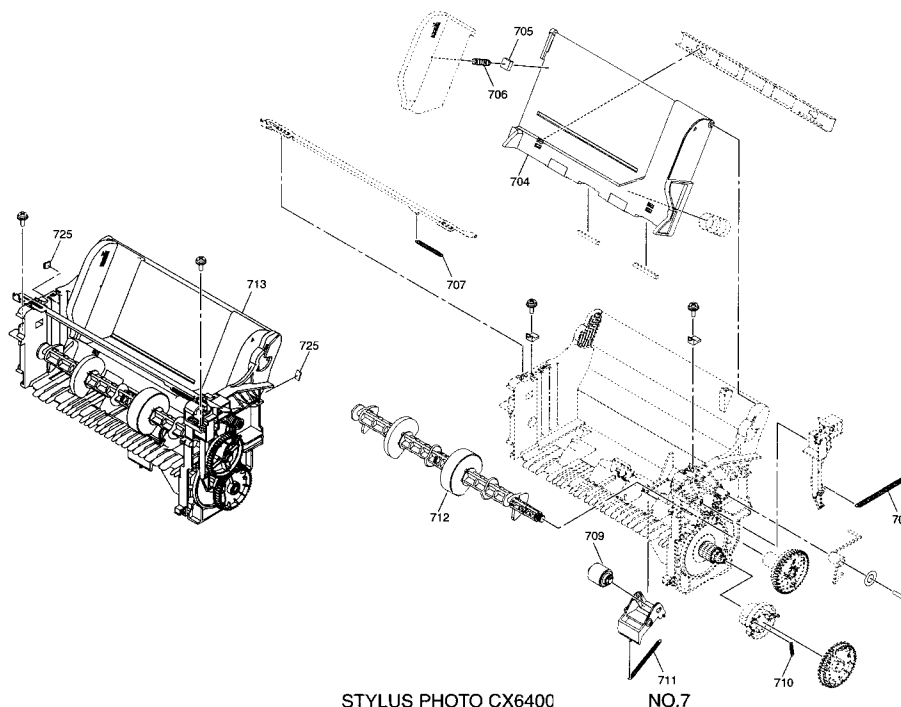
Page No.:7



*NB: Part No. Rationalisation – any 10 digit part numbers in brackets are the old part numbers for otherwise identical components*

## STYLUS CX6400

*Page No.:8*

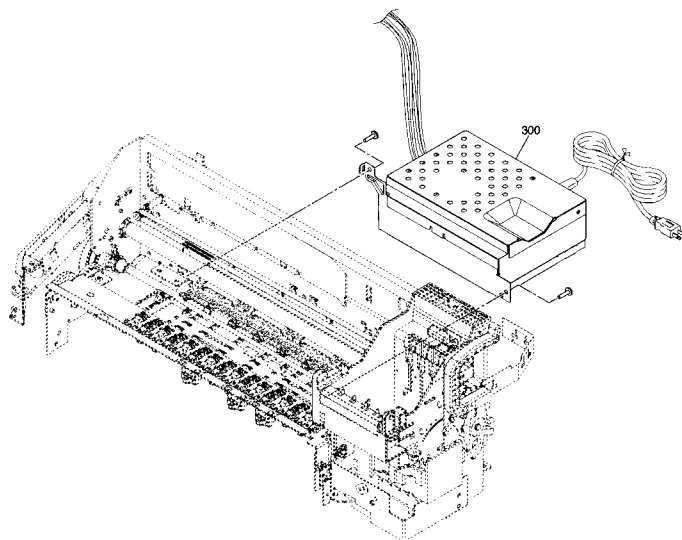




*NB: Part No. Rationalisation – any 10 digit part numbers in brackets are the old part numbers for otherwise identical components*

## STYLUS CX6400

*Page No.:9*



STYLUS PHOTO CX6400

NO.9