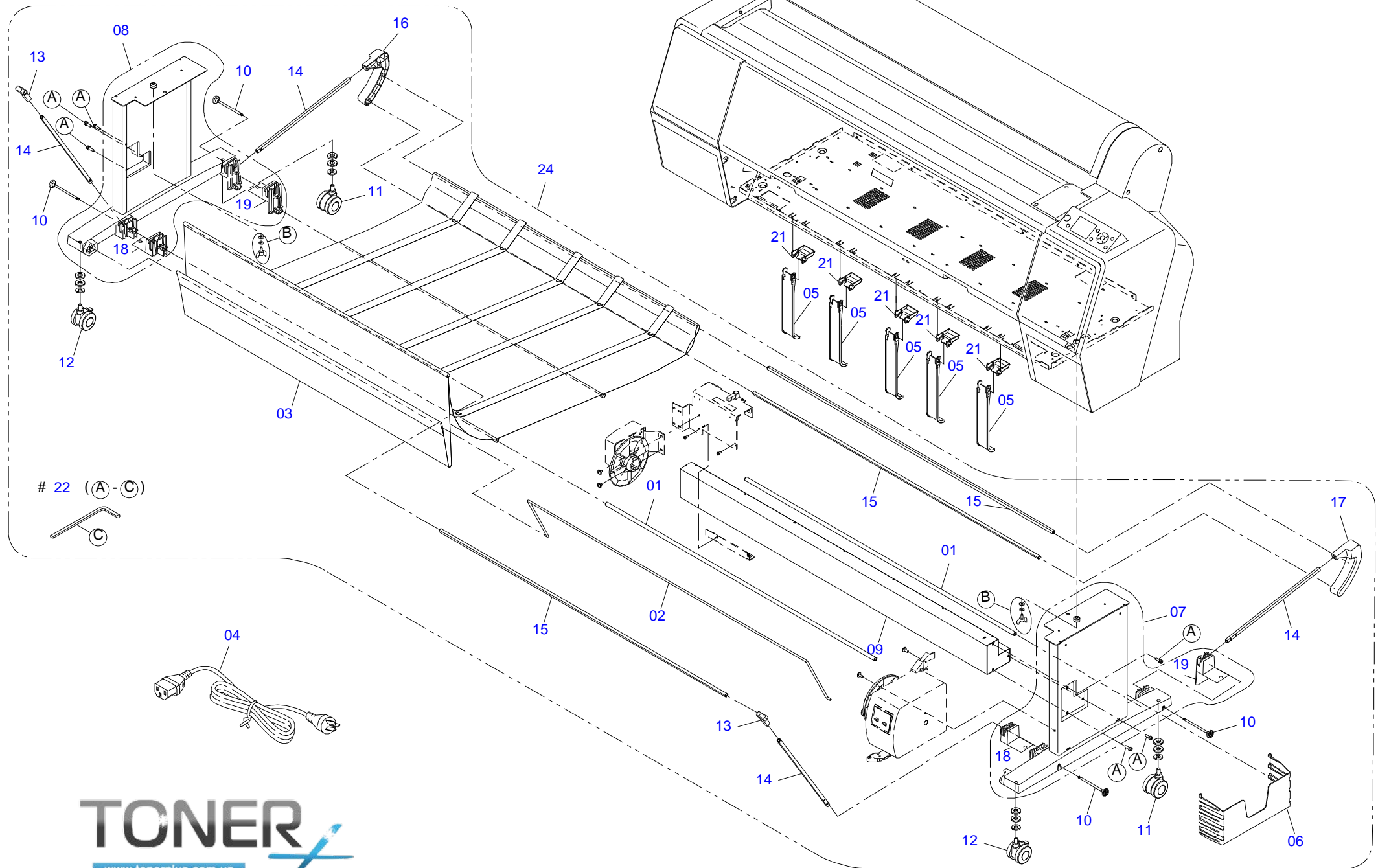


Only numbered Service Parts
are available.

CÓPIA NÃO CONTROLADA



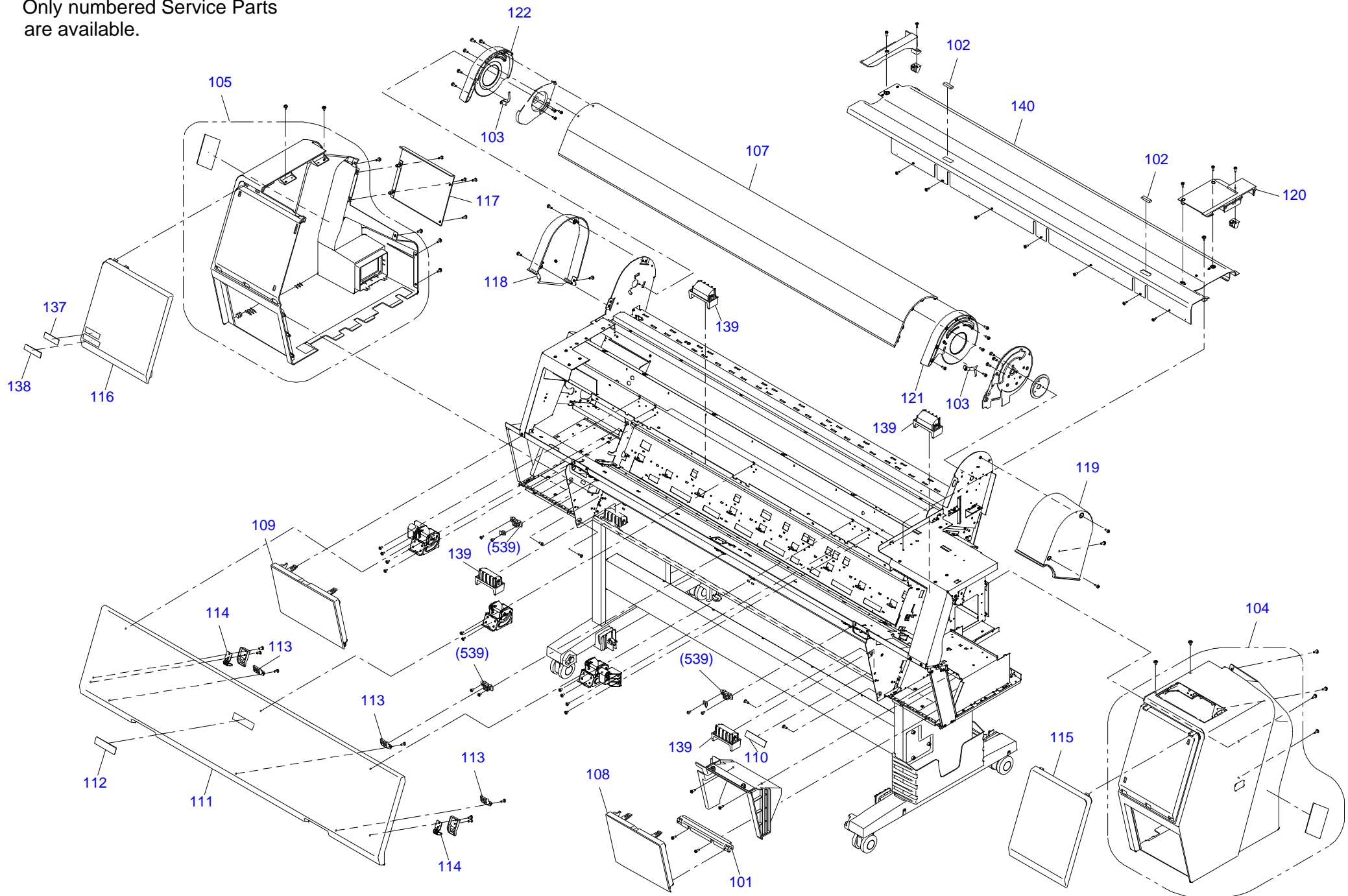
CÓPIA NÃO CONTROLADA

No.1

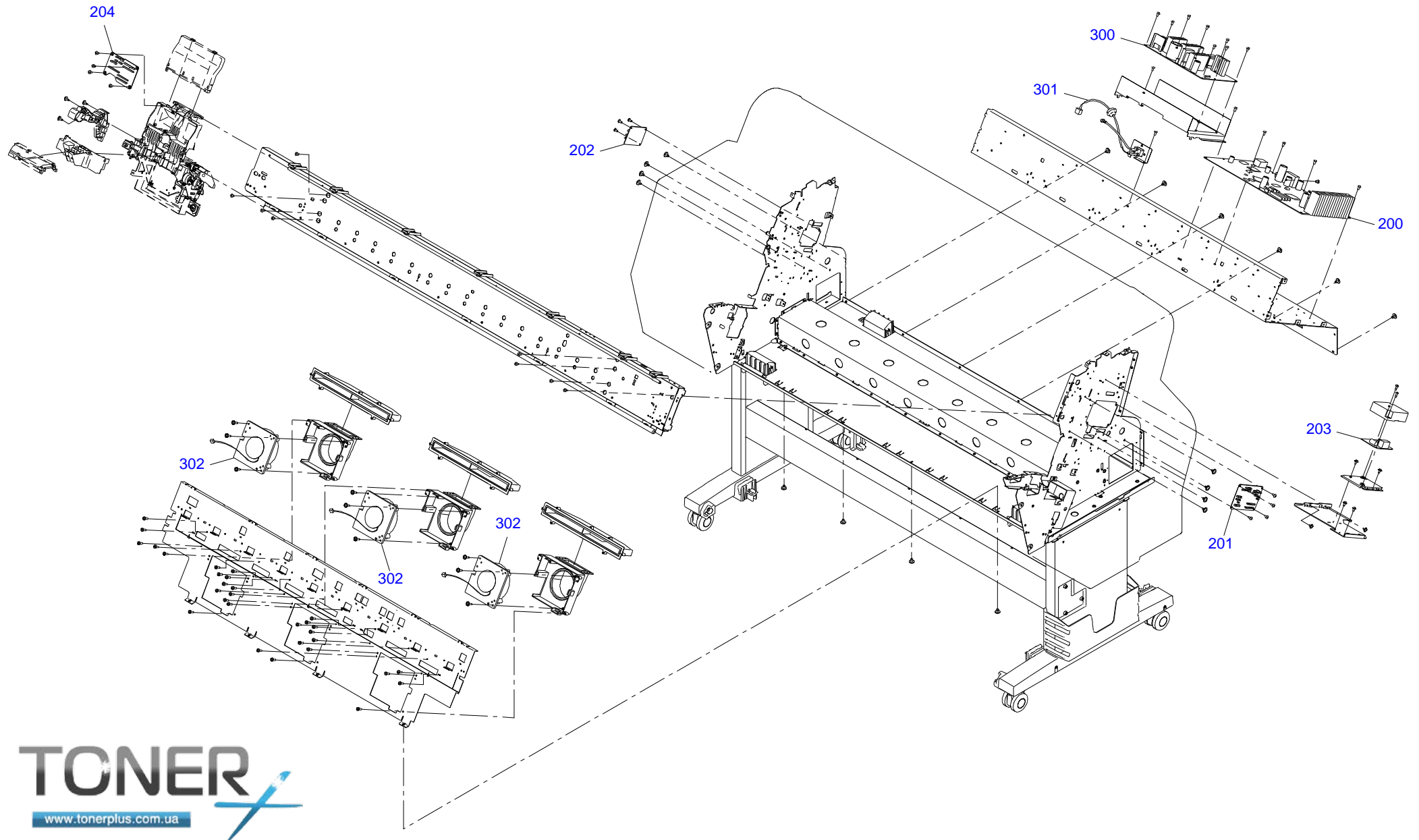
Rev.01

CA59-ACCE-011

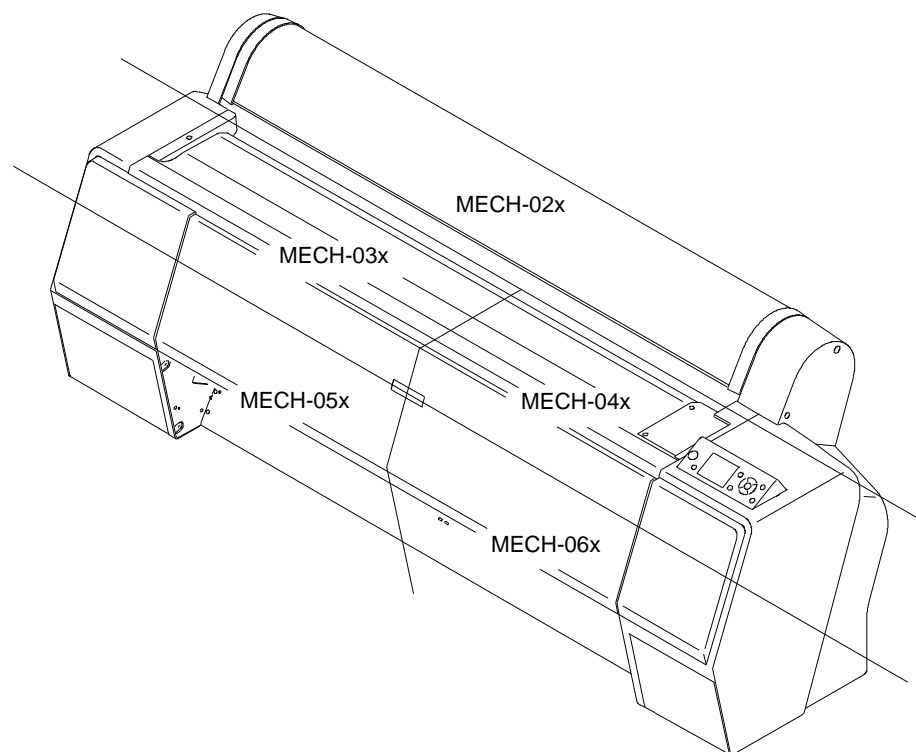
Only numbered Service Parts
are available.



Only numbered Service Parts
are available.



Only numbered Service Parts
are available.



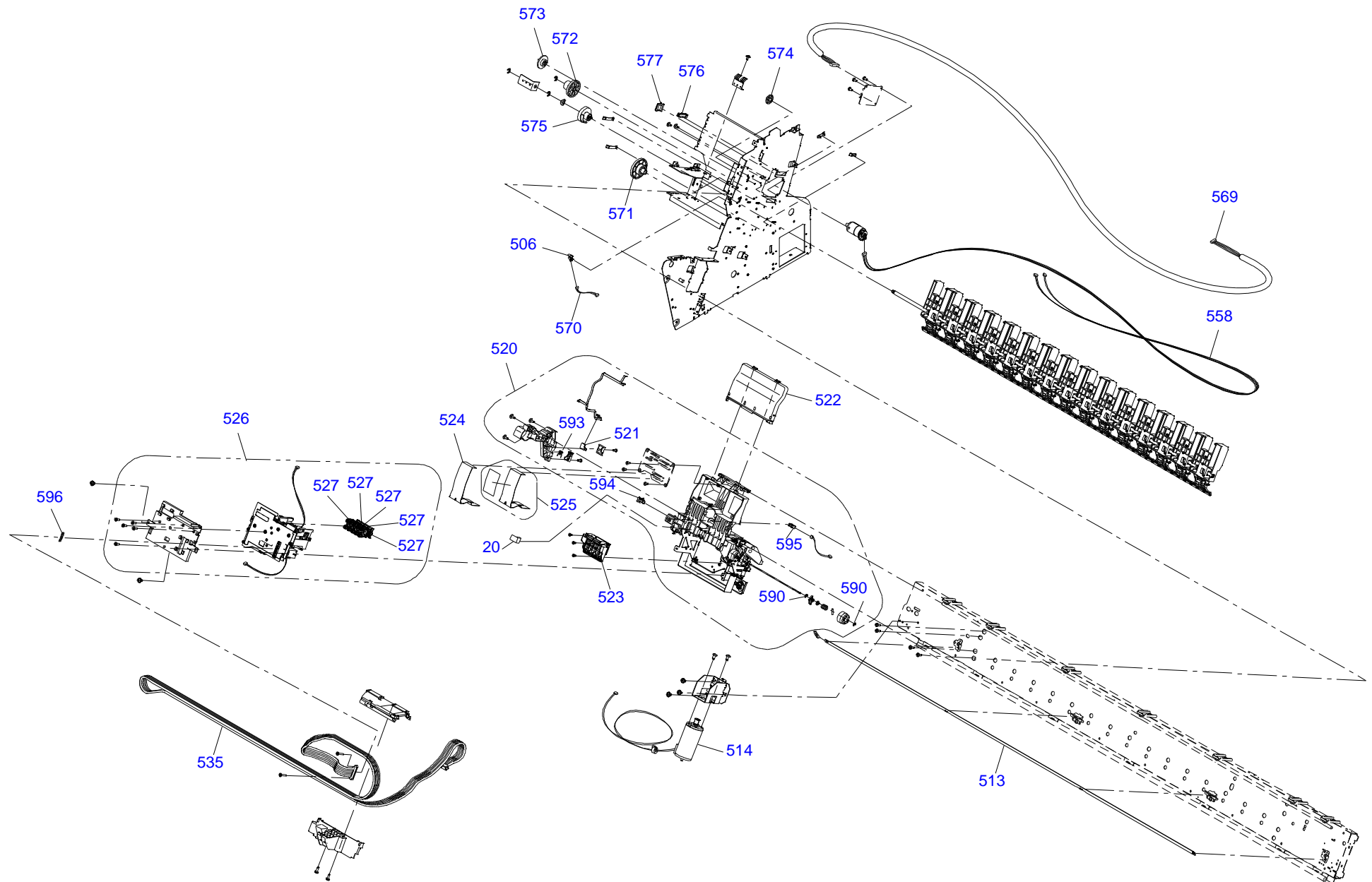
www.tonerplus.com.ua

Exploded view diagram of a printer assembly. The diagram shows the following components and their assembly relationships:

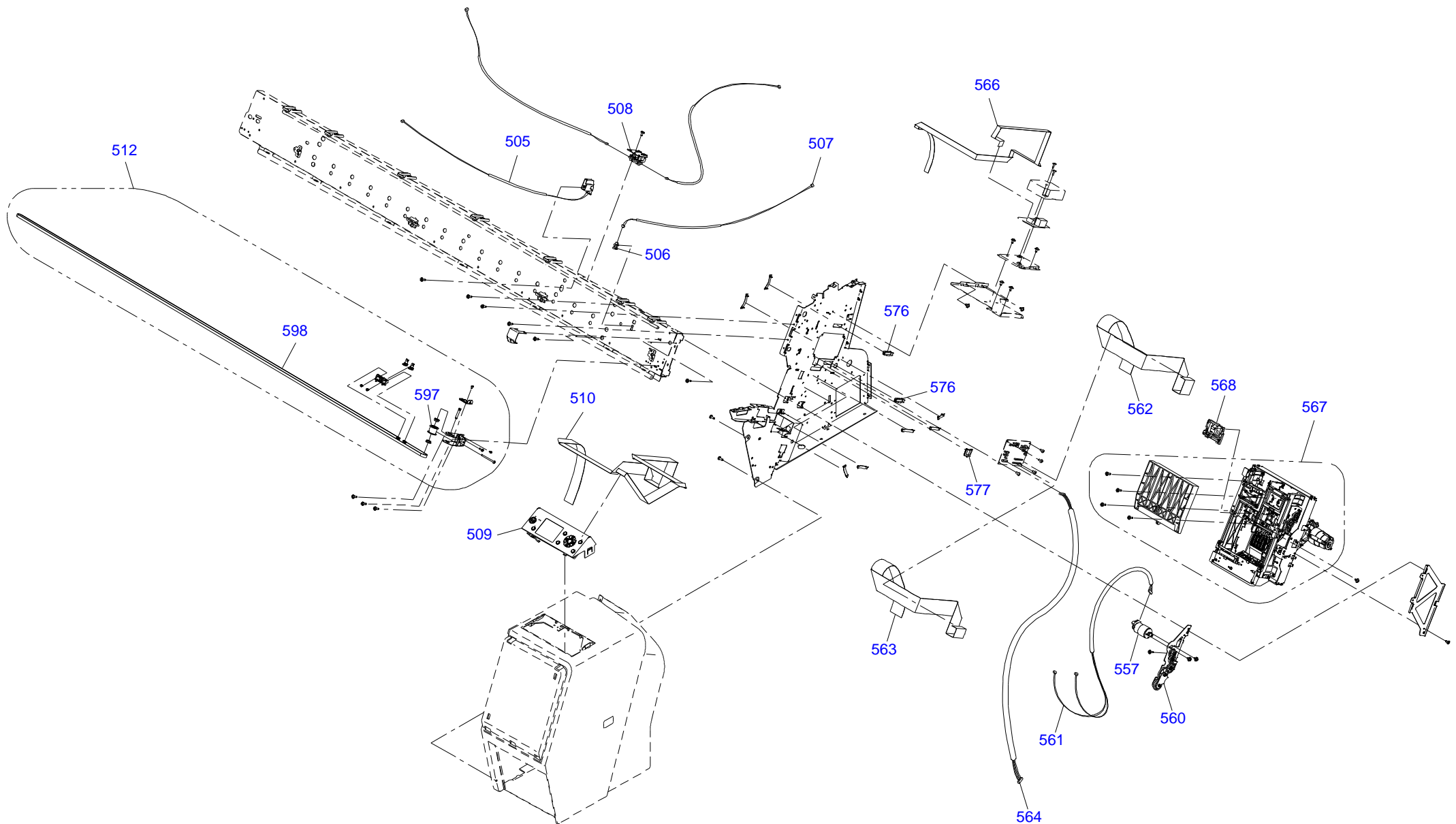
- 501**: A motor or actuator assembly.
- 502**: A circular component, likely a roller or gear.
- 503**: A complex mechanical assembly, possibly a carriage or paper support.
- 504**: A long, thin component, likely a paper support or guide.
- 511**: A small component, possibly a spring or clip.
- 543**: A curved component, likely a paper support or guide.

The diagram illustrates the assembly of these components into a printer unit. Dashed lines indicate the assembly path and alignment of the parts.

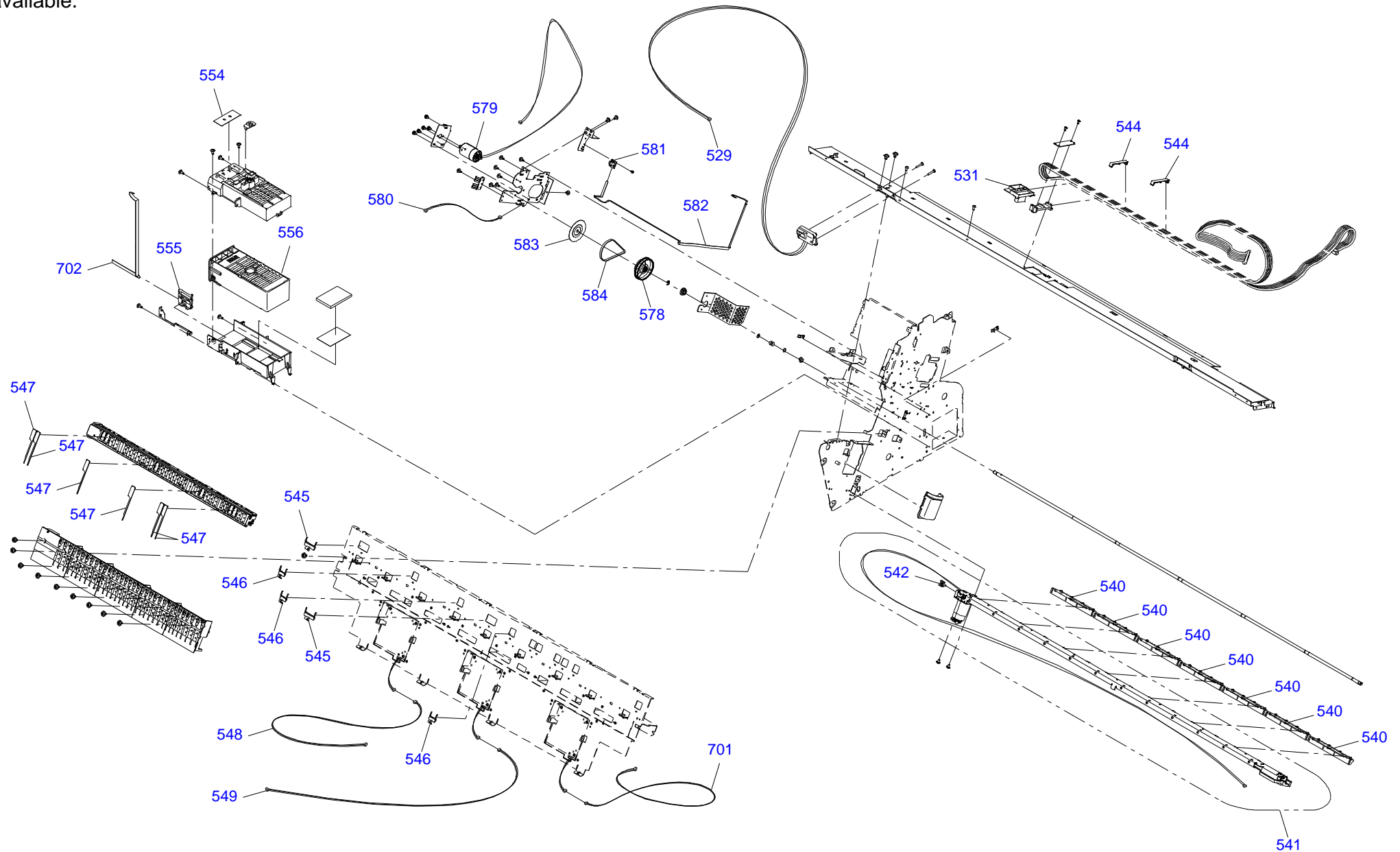
Only numbered Service Parts
are available.



Only numbered Service Parts
are available.



Only numbered Service Parts
are available.



Only numbered Service Parts
are available.

