



# **FS-C2526MFP**

# **FS-C2626MFP**

## **PARTS LIST**

Published in March 2011

2M8PL070

842M8120

First Edition

## — CONTENTS —

FIG. 1	Covers .....	2
FIG. 2	Paper Cassette .....	4
FIG. 3	Paper Feed Section 1 .....	6
FIG. 4	Paper Feed Section 2 .....	8
FIG. 5	Paper Conveying Section .....	10
FIG. 6	Laser Scanner Section .....	12
FIG. 7	Developer Section .....	14
FIG. 8	Image Formation Section .....	16
FIG. 9	Transfer Section .....	18
FIG. 10	Fuser Section .....	20
FIG. 11	Drive Section .....	22
FIG. 12	Electrical Components 1 .....	24
FIG. 13	Electrical Components 2 .....	26
FIG. 14	Operation Section .....	28
FIG. 15	Scanner Section .....	30
FIG. 16	Document Processor .....	32
FIG. 17	FAX Section (4in1 model) .....	34
FIG. 18	Accessories .....	36
FIG. 19	Maintenance Kits .....	38
• INDEX .....		39

FIG. 1 Covers

2M8/2M9

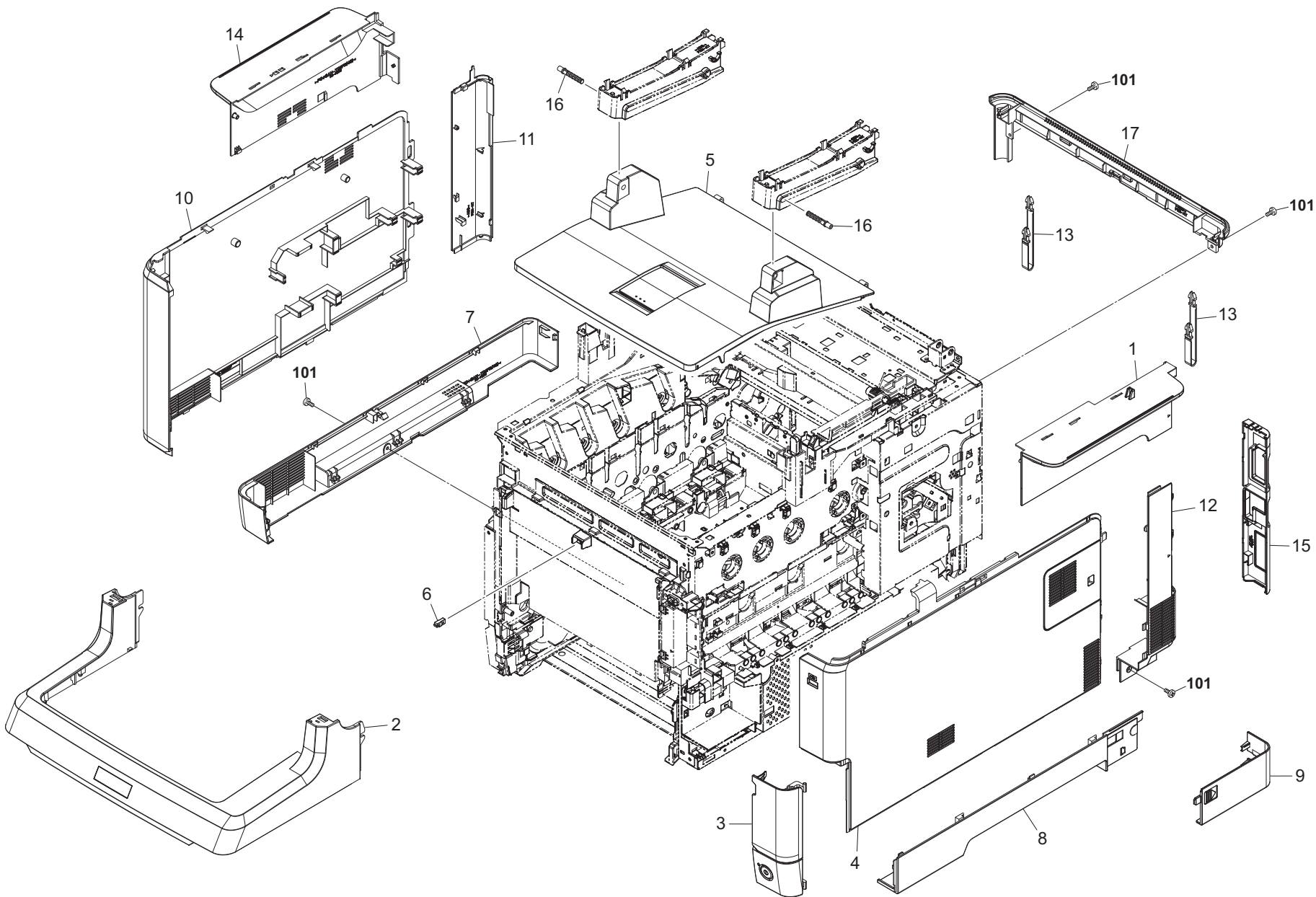


FIG. 1 Covers

2M8/2M9

Ref. No.	Part.No.	Alternative Part.No.	Description	Quantity		
				120	230	240
1	302KW94100	2KW94100	PARTS COVER RIGHT UPPER ASSY SP	1		
1	302KW04040	2KW04040	COVER RIGHT UPPER		1	1
2	302KW94090	2KW94090	PARTS COVER FRONT ASSY SP	1	1	1
3	302KT94060	2KT94060	PARTS COVER WASTE ASSY SP	1	1	1
4	302KV94110	2KV94110	PARTS COVER RIGHT ASSY SP	1	1	1
5	302KW94080	2KW94080	PARTS LID TOP M ASSY SP	1	1	1
6	302HN08140	2HN08140	LUTCH	1	1	1
7	302KT04010	2KT04010	COVER LEFT BOTTOM	1	1	1
8	302KT04020	2KT04020	COVER RIGHT BOTTOM	1	1	1
9	302KT04030	2KT04030	COVER CABLE	1	1	1
10	302KV04030	2KV04030	COVER LEFT	1	1	1
11	302KV04060	2KV04060	COVER LEFT REAR	1	1	1
12	302KV04070	2KV04070	COVER RIGHT REAR	1	1	1
13	302KV04130	2KV04130	STRAP COVER REAR	2	2	2
14	302KW04030	2KW04030	COVER LEFT UPPER	1	1	1
15	302M804010	2M804010	COVER CONNECTOR (3in1 model)	1	1	1
15	302M904010	2M904010	COVER CONNECTOR (4in1 model)	1	1	1
16	302KW04090	2KW04090	PIN LID TOP	2	2	2
17	302KW04050	2KW04050	COVER REAR UPPER	1	1	1
101	7BB780308H	BB111200	+BIND T.T S SCREW 3X8 SR(BLACK)			



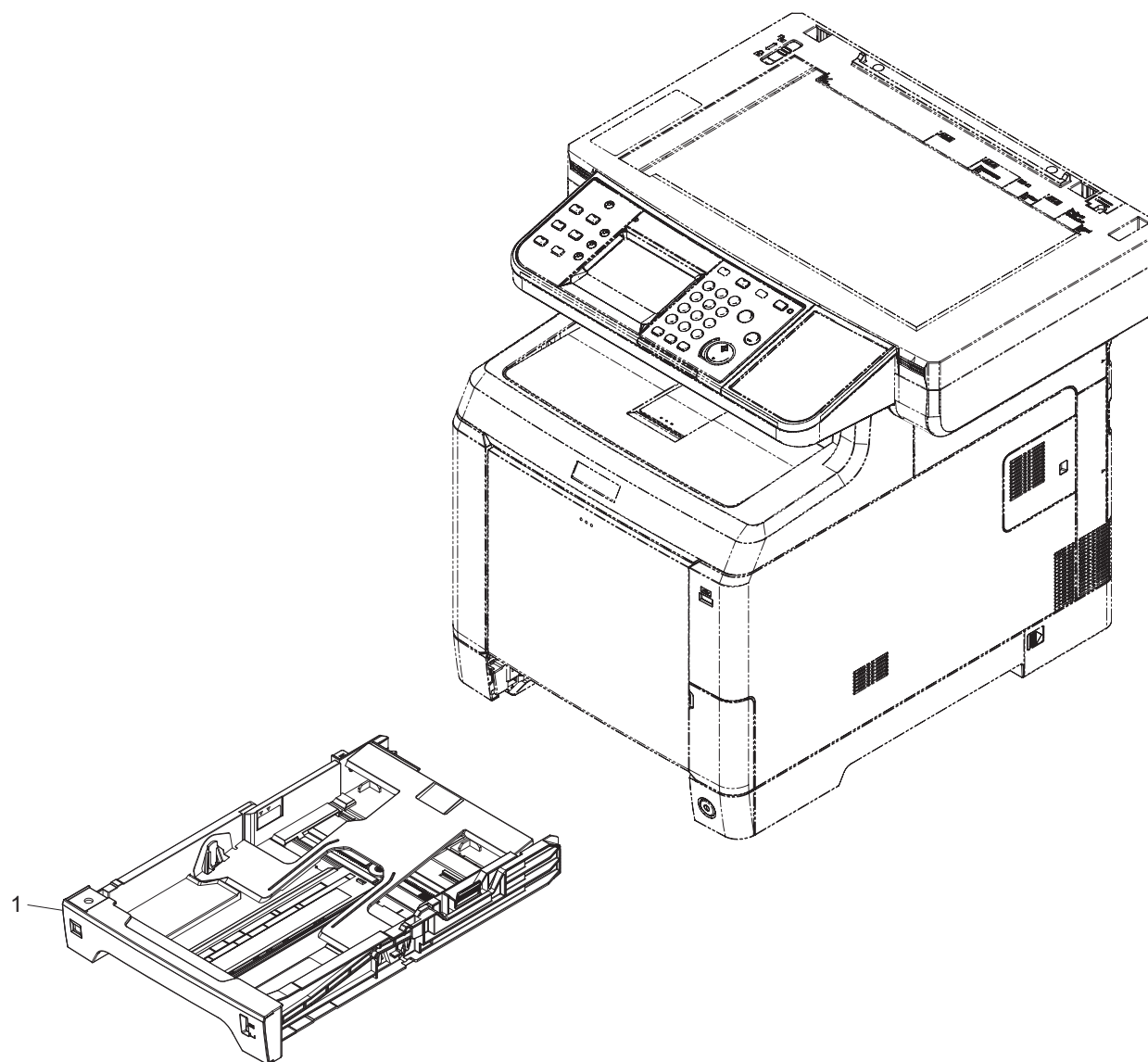


FIG. 2 Paper Cassette

2M8/2M9

Ref. No.	Part.No.	Alternative Part.No.	Description	Quantity		
				120	230	240
1	302KT93040	2KT93040	CT-591	1	1	1

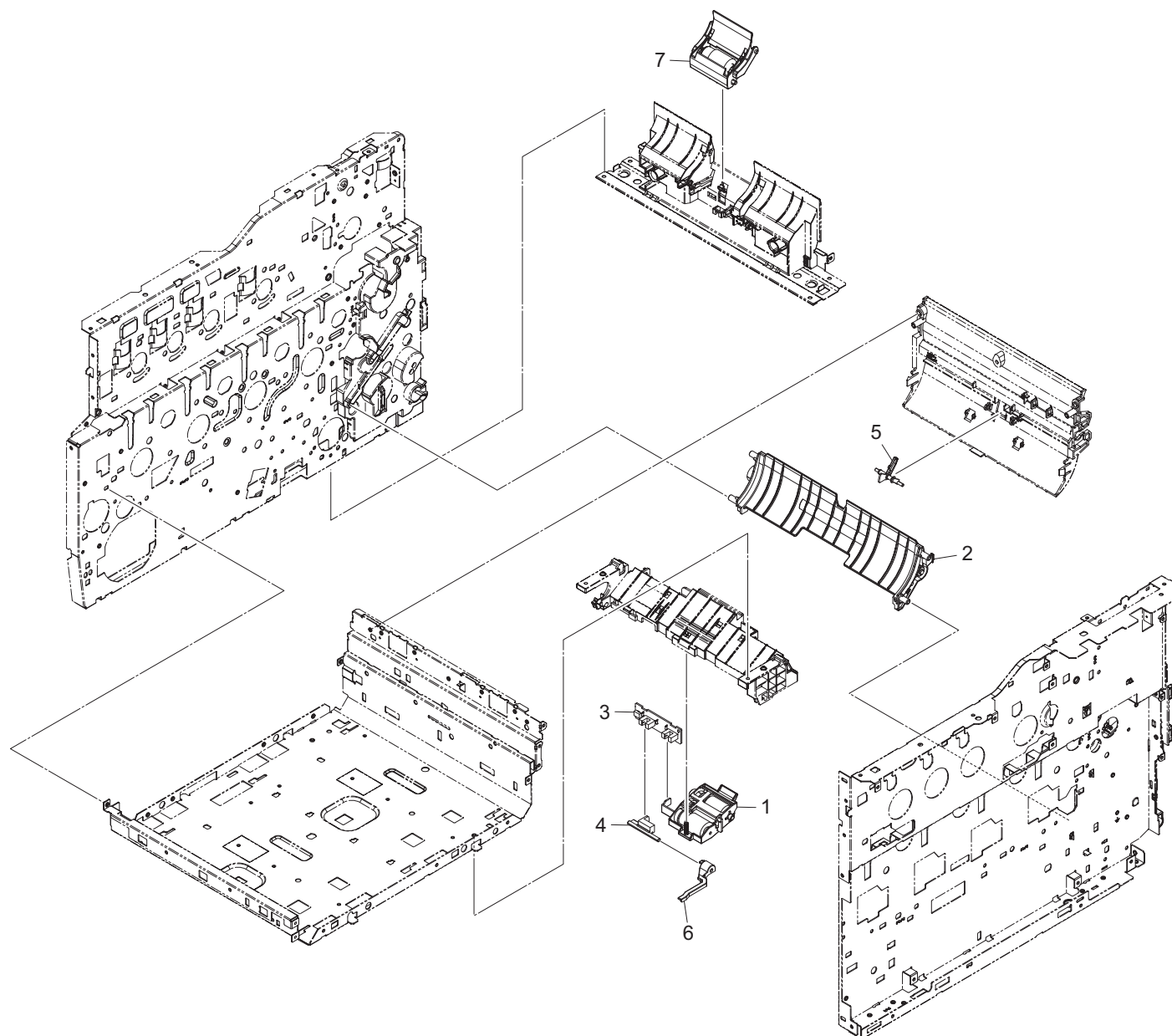


FIG. 3 Paper Feed Section 1

2M8/2M9

Ref. No.	Part.No.	Alternative Part.No.	Description	Quantity		
				120	230	240
1	302KV94191	2KV94191	PARTS HOLDER FEED ASSY SP	1	1	1
2	302KV94200	2KV94200	PARTS HOLDER MIDDLE ROLLER ASSY SP	1	1	1
3	302KT94070	2KT94070	PARTS PWB ASSY CASSETTE SP	1	1	1
4	302KT06050	2KT06050	ACTUATOR PE	1	1	1
5	302KV06090	2KV06090	ACTUATOR REGIST	1	1	1
6	302KV06341	2KV06341	ACTUATOR B	1	1	1
7	302KT94051	2KT94051	PARTS HOLDER RETARD ASSY SP	1	1	1

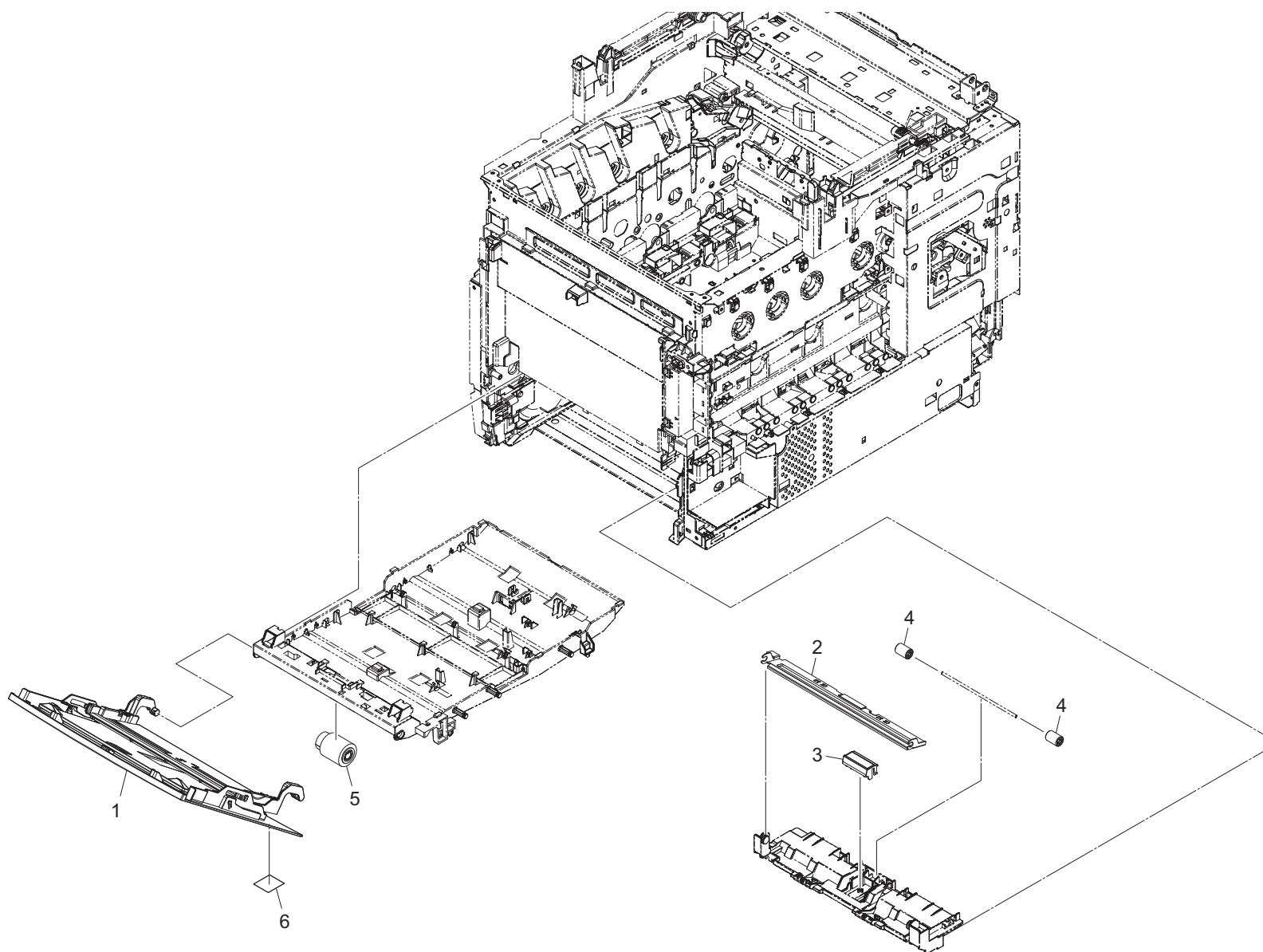


FIG. 4 Paper Feed Section 2

2M8/2M9

Ref. No.	Part.No.	Alternative Part.No.	Description	Quantity		
				120	230	240
1	302KV94130	2KV94130	PARTS COVER MPF ASSY SP	1	1	1
2	302KV94150	2KV94150	PARTS PLATE BOTTOM MPF ASSY SP	1	1	1
3	302KV94140	2KV94140	PARTS SEPARATOR MPF ASSY SP	1	1	1
4	302F929050	2F929050	PULLEY FEED DU	2	2	2
5	5AAVR0LL+051	2CL16130	ROLLER M/P ASSY /43487B0027 A4	1	1	1
6	302G634070	2G634070	LABEL ENERGY STAR	1	1	1

FIG. 5 Paper Conveying Section

2M8/2M9

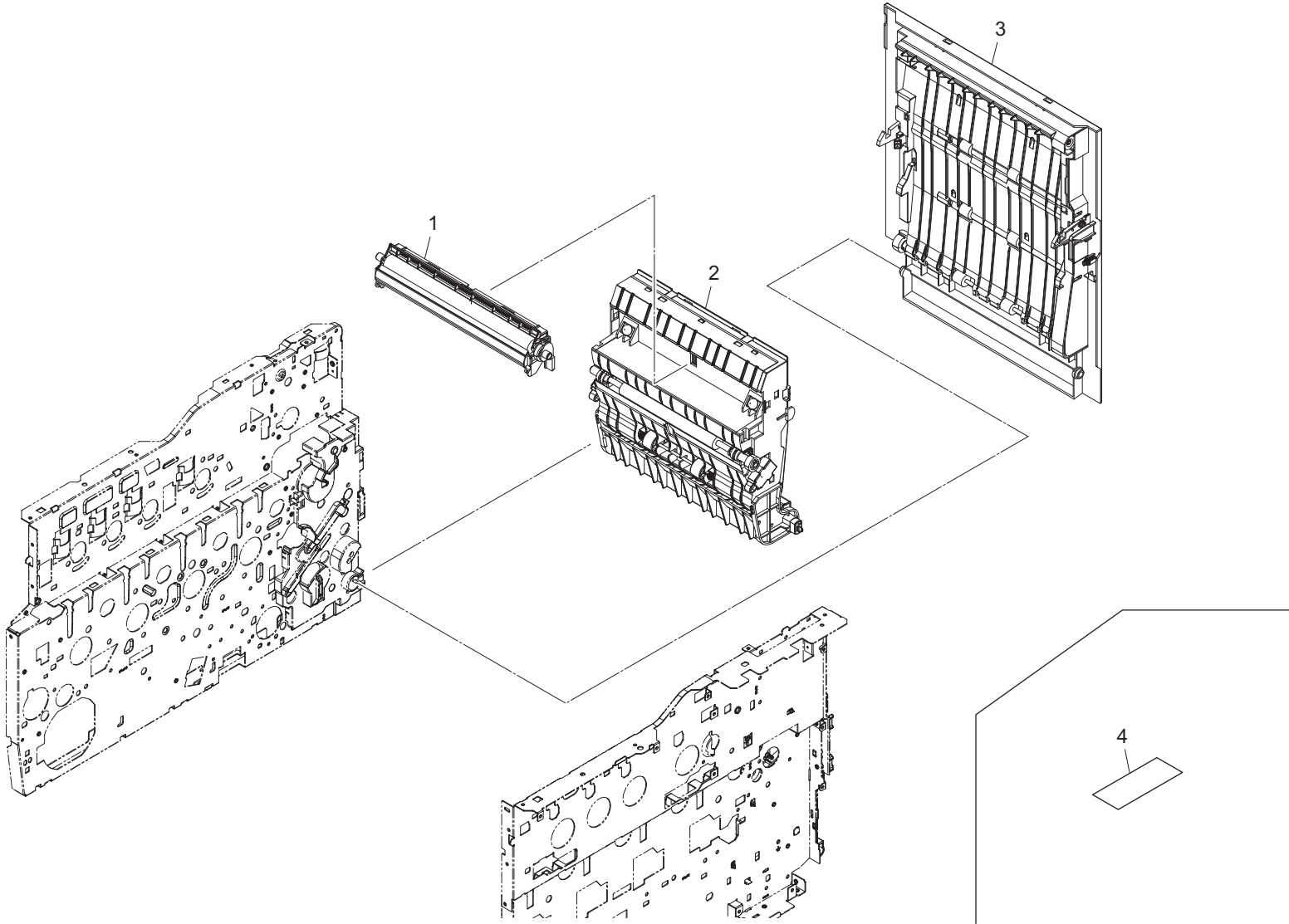


FIG. 5 Paper Conveying Section

2M8/2M9

Ref. No.	Part.No.	Alternative Part.No.	Description	Quantity		
				120	230	240
1	302KV94160	2KV94160	PARTS TRANSFER ASSY SP	1	1	1
2	302KV94171	2KV94171	PARTS CONVEYING ASSY SP	1	1	1
3	302KV94254	2KV94254	PARTS DU REAR COVER ASSY SP	1	1	1
4	302KV34090	2KV34090	LABEL MULTI LANGUAGE		1	



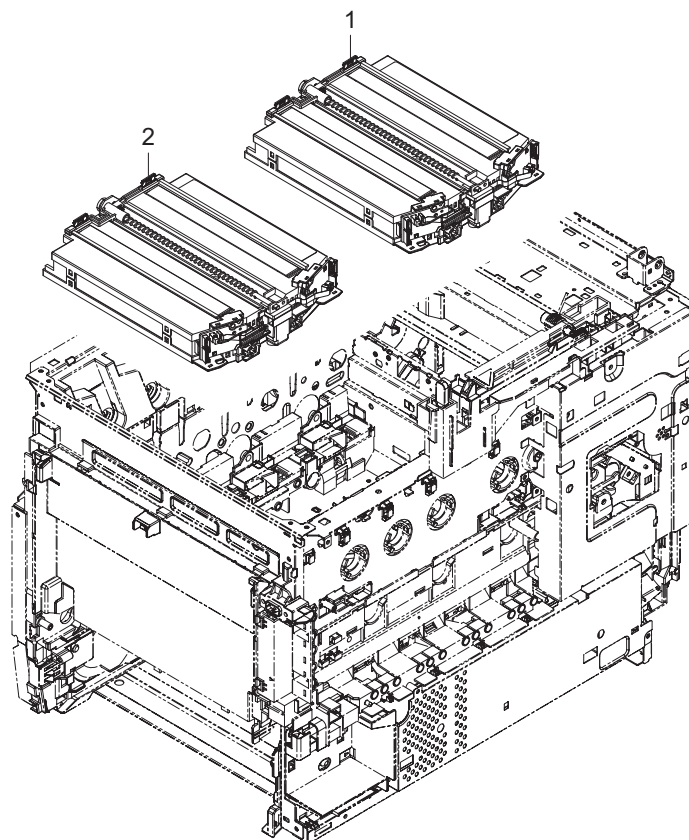


FIG. 6 Laser Scanner Section

2M8/2M9

Ref. No.	Part.No.	Alternative Part.No.	Description	Quantity		
				120	230	240
1	302KV93020	2KV93020	LK-590A	1	1	1
2	302KV93030	2KV93030	LK-590B	1	1	1

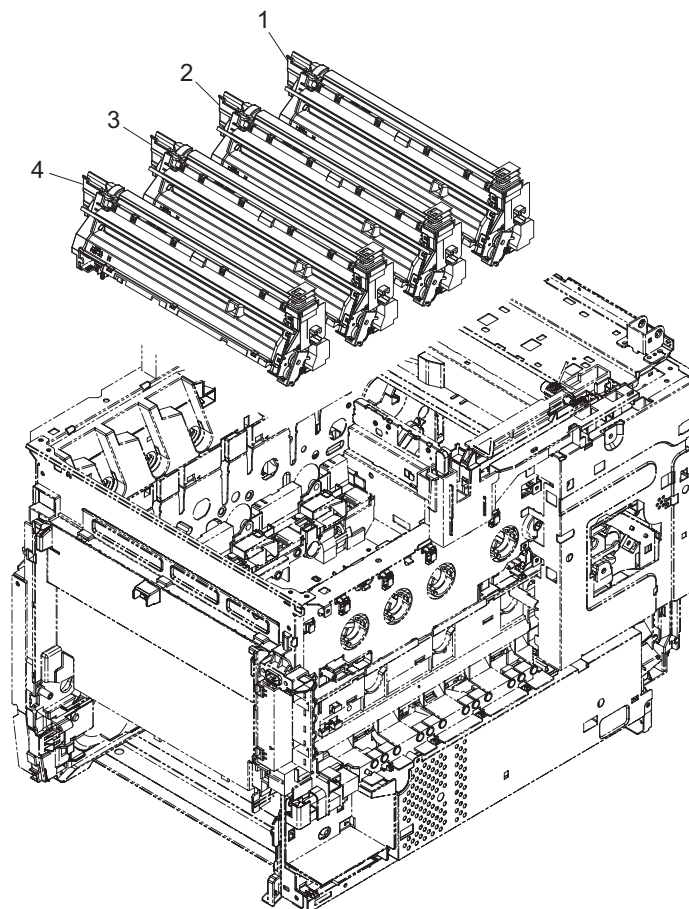


FIG. 7 Developer Section

2M8/2M9

Ref. No.	Part.No.	Alternative Part.No.	Description	Quantity		
				120	230	240
1	302HN93252	2HN93252	DV-560 US (K)	1		
1	302HN93012	2HN93012	DV-560(K)		1	1
2	302HN93282	2HN93282	DV-560 US (M)	1		
2	302HN93042	2HN93042	DV-560(M)		1	1
3	302HN93272	2HN93272	DV-560 US (C)	1		
3	302HN93032	2HN93032	DV-560(C)		1	1
4	302HN93262	2HN93262	DV-560 US (Y)	1		
4	302HN93022	2HN93022	DV-560(Y)		1	1

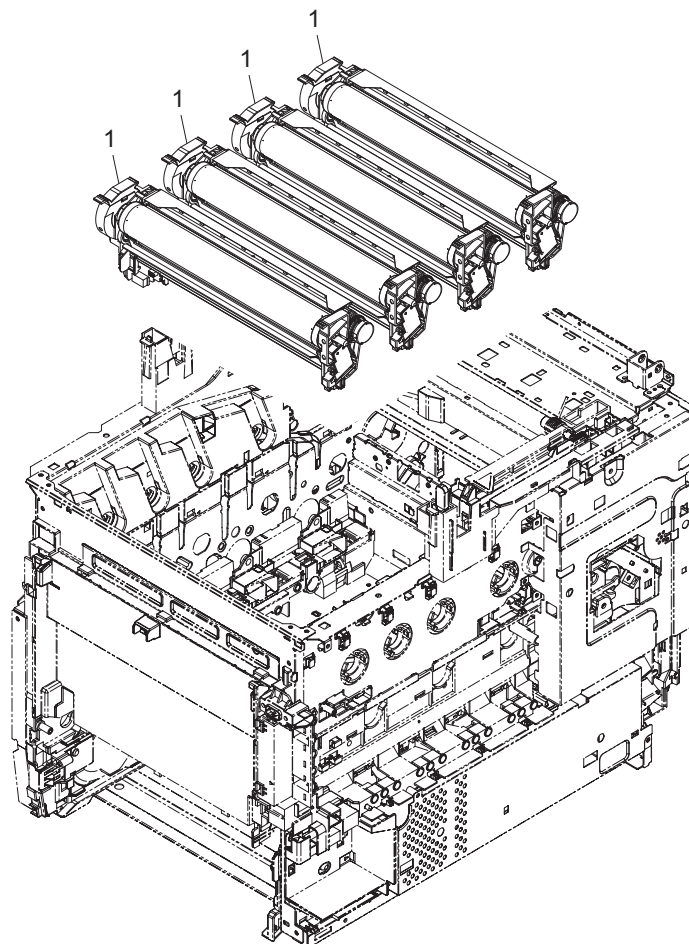


FIG. 8 Image Formation Section

2M8/2M9

Ref. No.	Part.No.	Alternative Part.No.	Description	Quantity		
				120	230	240
1	302KV93012	2KV93012	DK-590	4	4	4

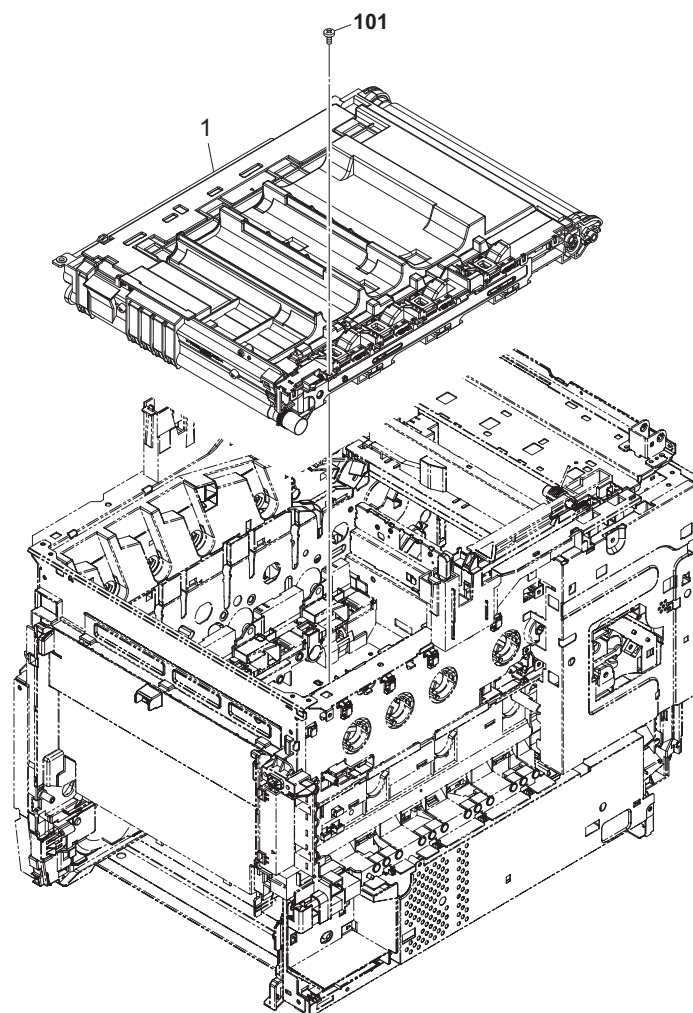


FIG. 9 Transfer Section

2M8/2M9

Ref. No.	Part.No.	Alternative Part.No.	Description	Quantity		
				120	230	240
1	302KV93070	2KV93070	TR-590	1	1	1
101	7BB700412H	BB106830	+BIND T.T S SCREW 4X12 SR			



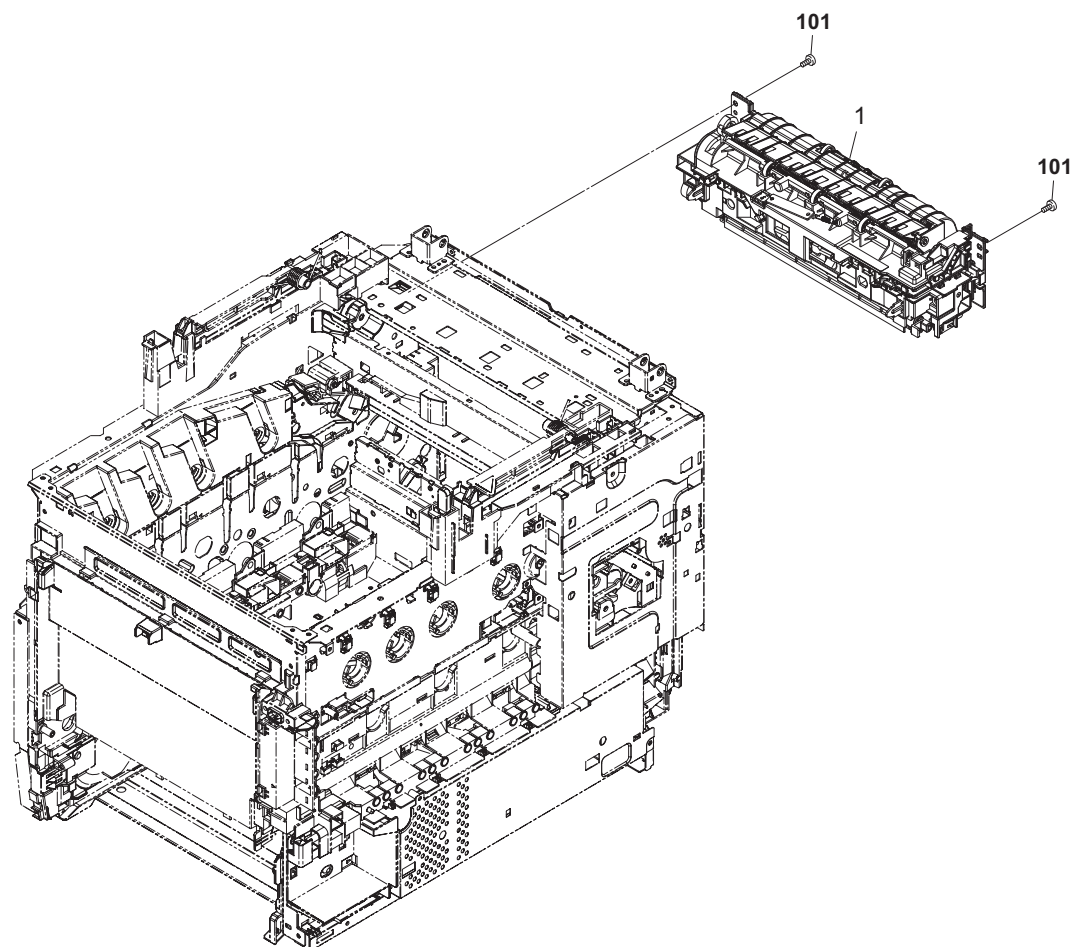


FIG. 10 Fuser Section

2M8/2M9

Ref. No.	Part.No.	Alternative Part.No.	Description	Quantity		
				120	230	240
1 1	302KV93050 302KV93040	2KV93050 2KV93040	FK-590(U) FK-590(E)	1	1	1
101	7BB700408H	BB105640	+BIND T.T S SCREW 4X8 SR			

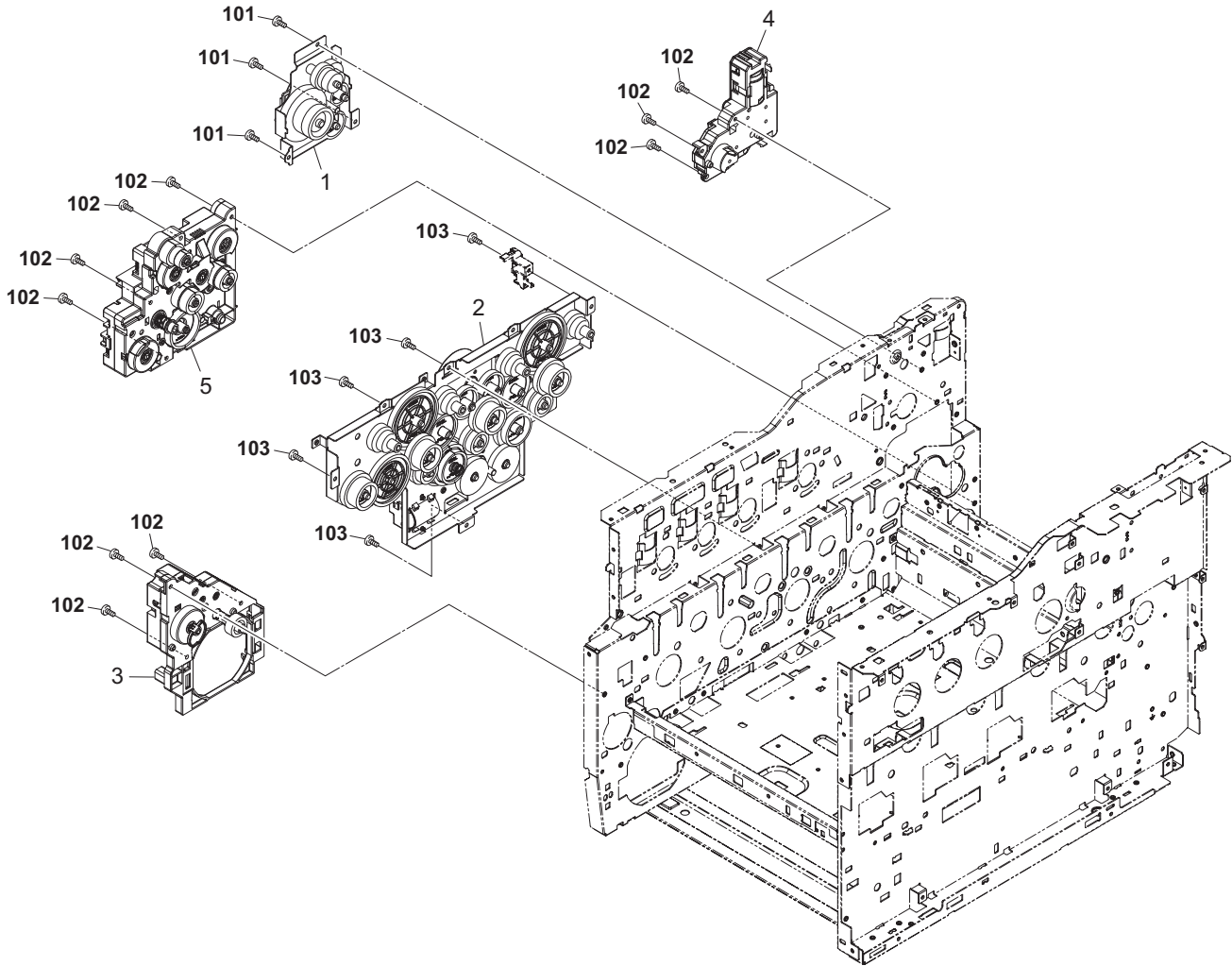


FIG. 11 Drive Section

2M8/2M9

Ref. No.	Part.No.	Alternative Part.No.	Description	Quantity		
				120	230	240
1	302KV93090	2KV93090	DR-590A	1	1	1
2	302KV93100	2KV93100	DR-590B	1	1	1
3	302KV94230	2KV94230	PARTS DRIVE MPF ASSY SP	1	1	1
4	302KV94220	2KV94220	PARTS DRIVE PRESS ASSY SP	1	1	1
5	302KV94210	2KV94210	PARTS DRIVE FEED ASSY SP	1	1	1
101	7BB700306H	BB105590	+BIND T.T S SCREW 3X6 SR			
102	7BB700312H	BB106820	+BIND T.T S SCREW 3X12 SR			
103	7BB700308H	BB105600	+BIND T.T S SCREW 3X8 SR			

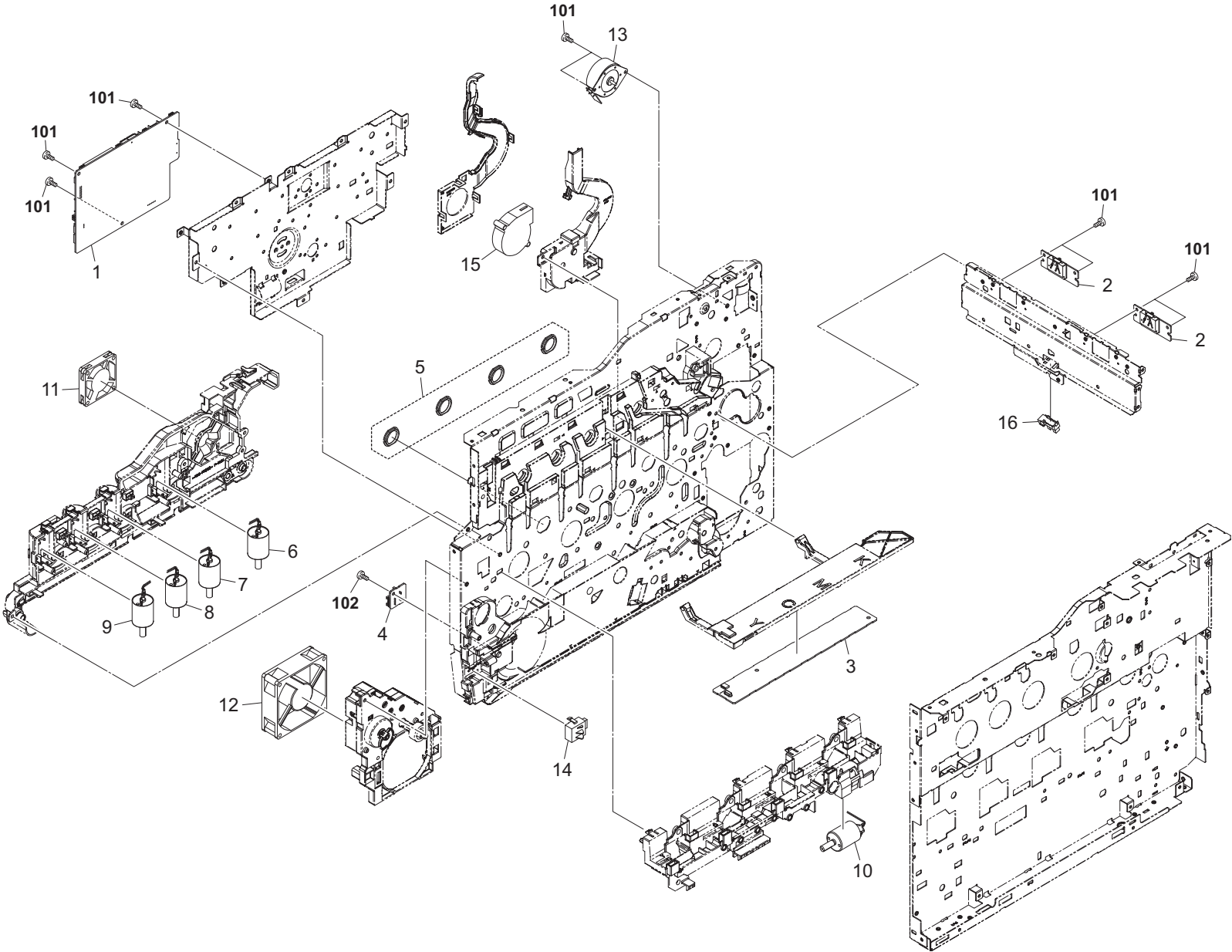


FIG. 12 Electrical Components 1

2M8/2M9

Ref. No.	Part.No.	Alternative Part.No.	Description	Quantity		
				120	230	240
1	302M894060	2M894060	PARTS PWB ENGINE ASSY SP	1	1	1
2	302KV94320	2KV94320	PARTS ID SENSOR ASSY SP	2	2	2
3	302KV94350	2KV94350	PARTS PWB ASSY RFID SP	1	1	1
4	302KV94360	2KV94360	PARTS PWB ASSY THERMISTOR SP	1	1	1
5	302KV94080	2KV94080	PARTS BUSH GEAR SP	1	1	1
6	302KV94300	2KV94300	PARTS MOTOR-DC ASSY K SP	1	1	1
7	302KV94290	2KV94290	PARTS MOTOR-DC ASSY M SP	1	1	1
8	302KV94280	2KV94280	PARTS MOTOR-DC ASSY C SP	1	1	1
9	302KV94270	2KV94270	PARTS MOTOR-DC ASSY Y SP	1	1	1
10	302KV94310	2KV94310	PARTS MOTOR-DC ASSY LSU SP	1	1	1
11	302F944160	2F944160	FAN POWER PWB 50	1	1	1
12	302HN44010	2HN44010	FAN MOTOR	1	1	1
13	302HN44090	2HN44090	MOTOR FUSER	1	1	1
14	302HN44180	2HN44180	SWITCH SIZE	1	1	1
15	302HN44210	2HN44210	FAN MOTOR	1	1	1
16	7NXGP1S173LCH01	NX116910	SENSOR OPT.	1	1	1
101	7BB700308H	BB105600	+BIND T.T S SCREW 3X8 SR			
102	7BB200308H	BB105660	+BIND T.T P SCREW 3X8			

FIG. 13 Electrical Components 2

2M8/2M9

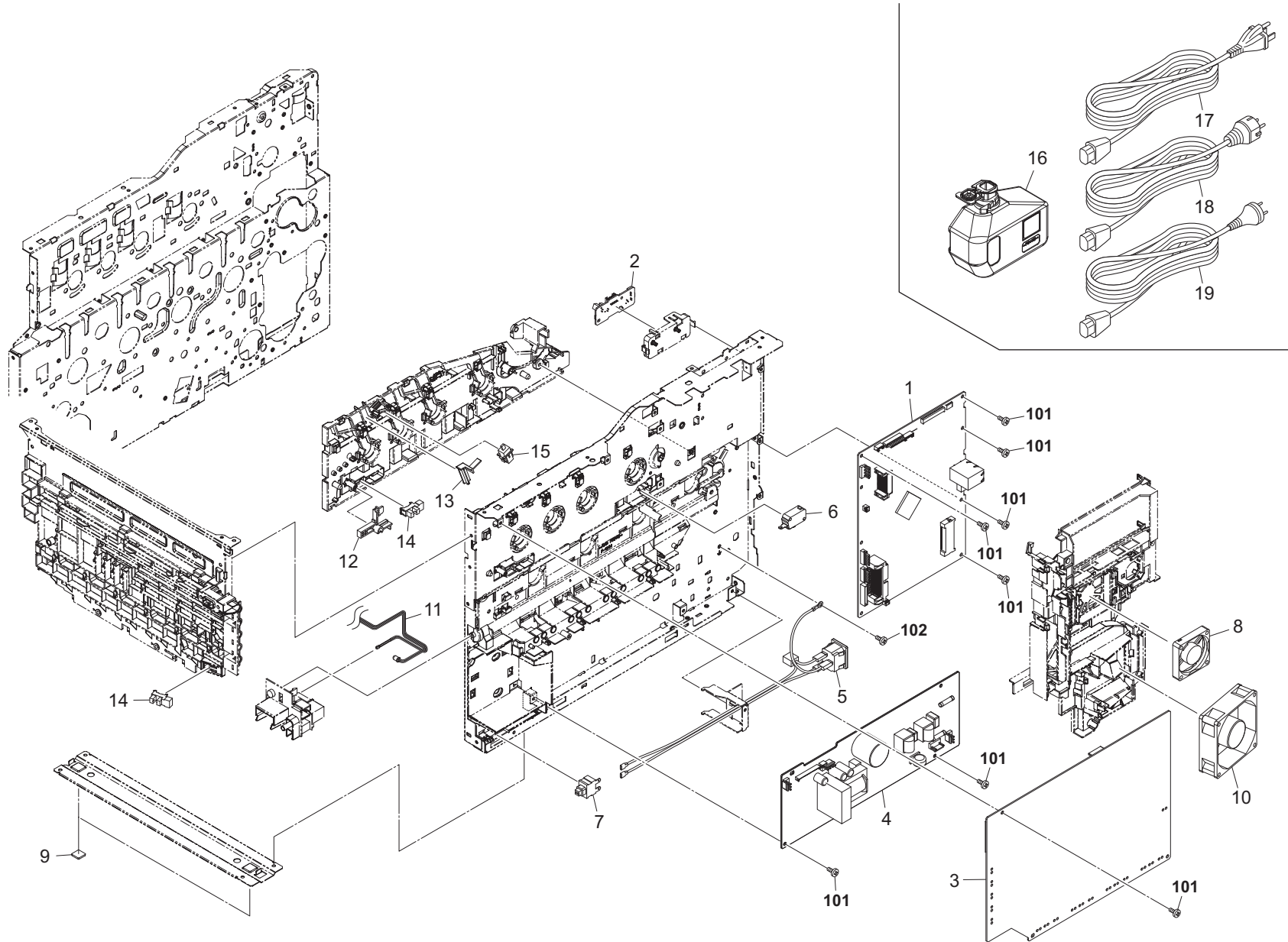


FIG. 13 Electrical Components 2

2M8/2M9

Ref. No.	Part.No.	Alternative Part.No.	Description	Quantity		
				120	230	240
1	302M894032	2M894032	PARTS PWB MAIN ASSY SP (3in1 model)	1		1
1	302M994022	2M994022	PARTS PWB MAIN ASSY SP (4in1 model)	1		1
1	302M894042	2M894042	PARTS PWB MAIN ASSY SP EU (3in1 model)		1	
1	302M994032	2M994032	PARTS PWB MAIN ASSY SP EU (4in1 model)		1	
2	302KT94080	2KT94080	PARTS PWB ASSY EXIT SP	1	1	1
3	302KV94060	2KV94060	PARTS HIGH VOLTAGE UNIT SP	1	1	1
4	302KW94040	2KW94040	PARTS SWITCHING REGULATOR 100V SP	1		
4	302KW94050	2KW94050	PARTS SWITCHING REGULATOR 230V SP		1	1
5	302KV00100	2KV00100	INLET ASSY	1	1	1
6	7SM010104+++H01	SM055200	SW.MICRO	1	1	1
7	7SP01000005+H01	SP119750	SW.PUSH	1	1	1
8	302HG44110	2HG44110	FAN MOTOR 50	1	1	1
9	302HN02611	2HN02611	FOOT	2	2	2
10	302HN44010	2HN44010	FAN MOTOR	1	1	1
11	302KV94370	2KV94370	PARTS TONER FULL DETECT SP	1	1	1
12	302KV02480	2KV02480	ACTUATOR DETECTION CONTAINER	1	1	1
13	302KV02C70	2KV02C70	ACTUATOR PUSH SWITCH	1	1	1
14	7NXGP1S173LCH01	NX116910	SENSOR OPT.	2	2	2
15	7SP01000001+H01	SP044290	SW.PUSH	1	1	1
16	302KV93110	2KV93110	WT-590	1	1	1
17	3019527401	19527401	POWER CORD(120)	1		
18	302FV45020	2FV45020	AC CORD ASSY		1	
19	302FV45040	2FV45040	AC CORD ASSY			1
101	7BB700308H	BB105600	+BIND T.T S SCREW 3X8 SR			
102	7BB700408H	BB105640	+BIND T.T S SCREW 4X8 SR			



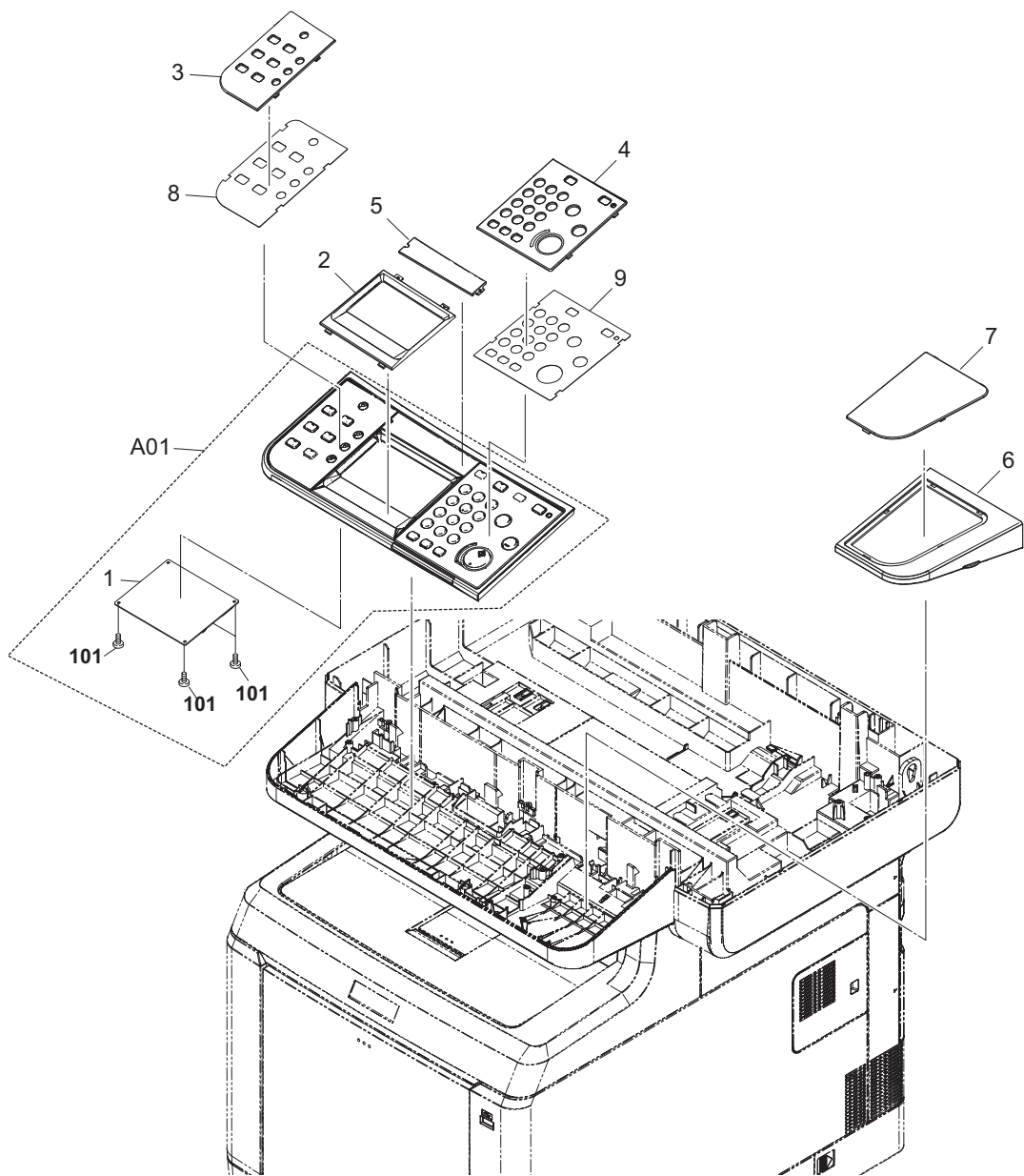


FIG. 14 Operation Section

2M8/2M9

Ref. No.	Part.No.	Alternative Part.No.	Description	Quantity		
				120	230	240
A01	302M894010	2M894010	PARTS OPERATION UNIT SP (3in1 model)	1	1	1
A01	302M994010	2M994010	PARTS OPERATION UNIT SP (4in1 model)	1	1	1
1	302M894050	2M894050	PARTS PWB PANEL MAIN ASSY	1	1	1
2	302K305030	2K305030	COVER PANEL A	1	1	1
3	302M805020	2M805020	PANEL OPERATION L	1	1	1
4	302M805030	2M805030	PANEL OPERATION R	1	1	1
5	302M805040	2M805040	PANEL OPERATION M	1	1	1
6	302M805050	2M805050	COVER IC-CARD	1	1	1
7	302M805090	2M805090	COVER IC-CARD SUB A	1	1	1
8	302M834110	2M834110	SHEET OPERATION L E (3in1 model)	1	1	1
8	302M934110	2M934110	SHEET OPERATION L E (4in1 model)	1	1	1
9	302M834310	2M834310	SHEET OPERATION R E (3in1model)	1	1	1
9	302M934310	2M934310	SHEET OPERATION R E (4in1model)	1	1	1
101	7BB700308H	BB105600	+BIND T.T S SCREW 3X8 SR			

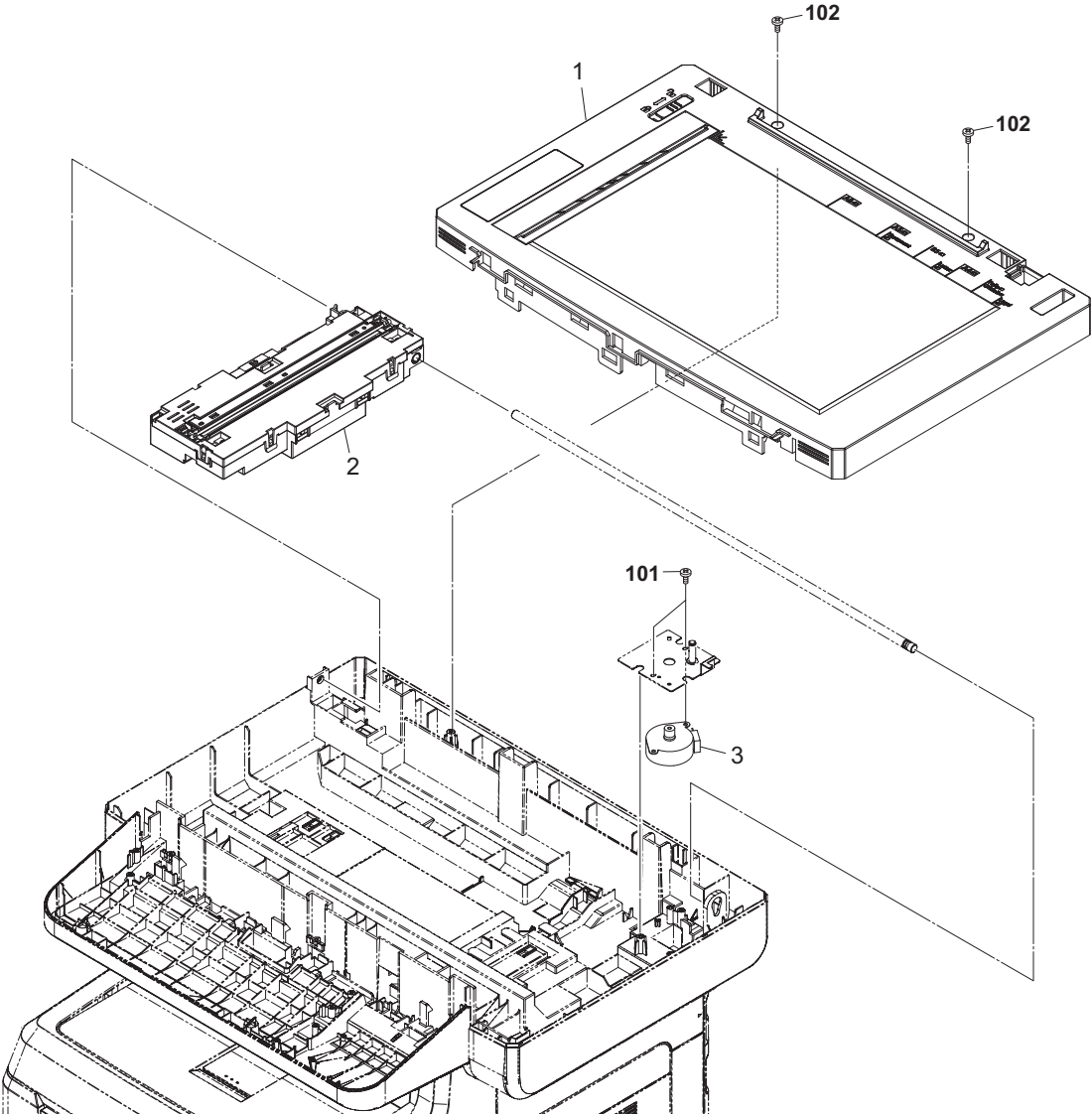


FIG. 15 Scanner Section

2M8/2M9

Ref. No.	Part.No.	Alternative Part.No.	Description	Quantity		
				120	230	240
1	302KW94070	2KW94070	PARTS FRAME ISU TOP ASSY SP	1	1	1
2	302M893010	2M893010	PARTS CARRIAGE ASSY	1	1	1
3	302LW94060	2LW94060	PARTS MOTOR ISU SP	1	1	1
101	7BB600306H	BB105730	+BIND M SCREW 3X6 R			
102	7BB200308H	BB105660	+BIND T.T P SCREW 3X8			

FIG. 16 Document Processor

2M8/2M9

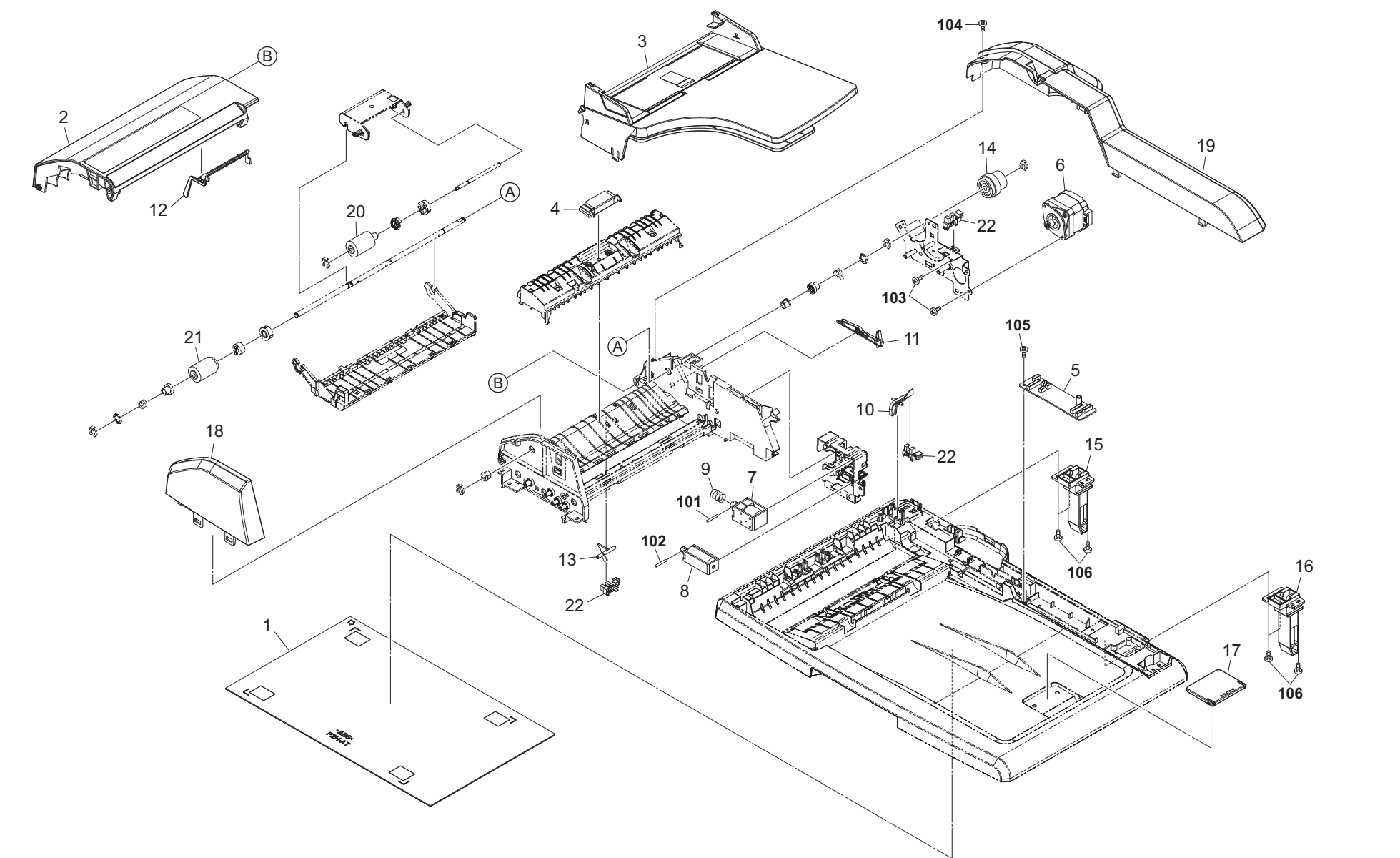


FIG. 16 Document Processor

2M8/2M9

Ref. No.	Part.No.	Alternative Part.No.	Description	Quantity		
				120	230	240
1	303LJ94070	3LJ94070	PARTS PLATE ORIGINAL SP	1	1	1
2	303M694010	3M694010	PARTS COVER PF ASSY	1	1	1
3	303LJ94120	3LJ94120	PARTS TABLE ASSY SP	1	1	1
4	303M694030	3M694030	PARTS SEPARATION PAD ASSY SP	1	1	1
5	303LJ94010	3LJ94010	PARTS DRIVER PWB ASSY SP	1	1	1
6	303LJ94061	3LJ94061	PARTS MOTOR DP SP	1	1	1
7	303LJ94140	3LJ94140	PARTS SOLENOID PRESSURE PULLEY SP	1	1	1
8	303LJ94150	3LJ94150	PARTS SOLENOID FEED SHIFT SP	1	1	1
9	303HL10200	3HL10200	SPRING LOOP	1	1	1
10	303K502200	3K502200	ACTUATOR BASE	1	1	1
11	303LJ02080	3LJ02080	ACTUATOR PUSH	1	1	1
12	303LJ07050	3LJ07050	ACTUATOR ORIGINAL	1	1	1
13	303LJ24080	3LJ24080	ACTUATOR TIMING	1	1	1
14	303LJ44040	3LJ44040	CLUTCH PAPER FEED	1	1	1
15	303M602020	3M602020	HINGE LEFT	1	1	1
16	303M602030	3M602030	HINGE RIGHT	1	1	1
17	303M602070	3M602070	STOPPER ORIGINAL	1	1	1
18	303M604010	3M604010	COVER FRONT	1	1	1
19	303M604020	3M604020	COVER REAR	1	1	1
20	36211110	36211110	PULLEY,LEADING FEED ADF	1	1	1
21	3BR07040	3BR07040	PULLEY,PAPER FEED	1	1	1
22	7NXSG2481+++H01	NX052600	SENSOR OPT.	3	3	3
101	E0130280	E0130280	SPRING PIN 3X28(SUS)			
102	E0120200	E0120200	SPRING PIN 2X20(SUS)			
103	7BB600306H	BB105730	+BIND M SCREW 3X6 R			
104	7BB200308H	BB105660	+BIND T.T P SCREW 3X8			
105	7BB202308H	BB105690	+TP-FLAT T.T P SCREW 3X8			
106	7BB202310H	BB063420	+TP-FLAT T.T P SCREW 3X10			

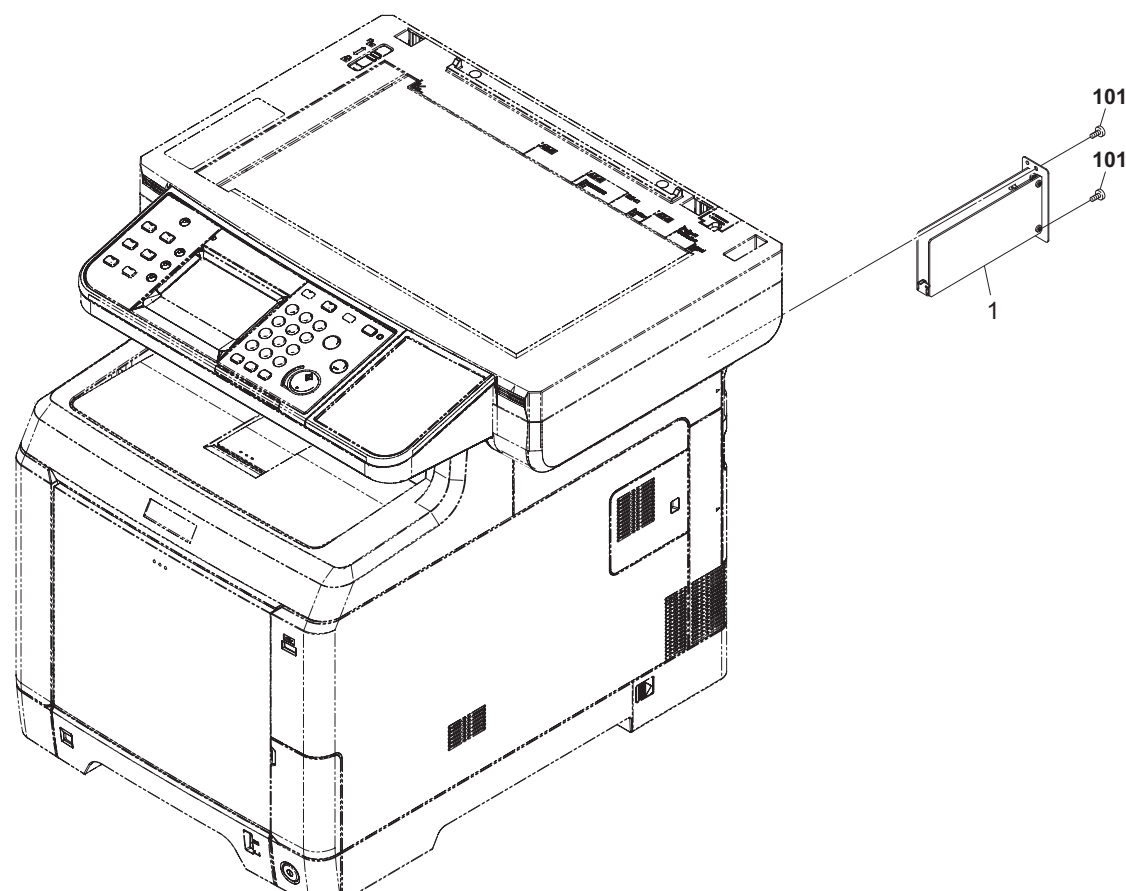


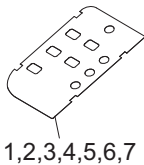
FIG. 17 FAX Section (4in1 model)

2M8/2M9

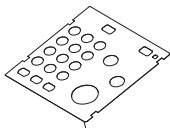
Ref. No.	Part.No.	Alternative Part.No.	Description	Quantity		
				120	230	240
1 1	302KX94050 302KX94040	2KX94050 2KX94040	PARTS FAX UNIT U SP (4in1 model) PARTS FAX UNIT E SP (4in1 model)	1	1	1
101	7BB700308H	BB105600	+BIND T.T S SCREW 3X8 SR			



3 in 1 model

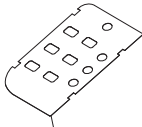


1,2,3,4,5,6,7

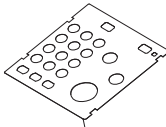


8,9,10,11,12,13,14

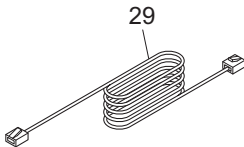
4 in 1 model



15,16,17,18,19,20,21



22,23,24,25,26,27,28



29

FIG. 18 Accessories

2M8/2M9

Ref. No.	Part.No.	Alternative Part.No.	Description	Quantity		
				120	230	240
1	302M834130	2M834130	SHEET OPERATION L GER (3in1 model)		1	
2	302M834140	2M834140	SHEET OPERATION L FRA (3in1 model)	1	1	
3	302M834150	2M834150	SHEET OPERATION L ITA (3in1 model)		1	
4	302M834160	2M834160	SHEET OPERATION L SPA (3in1 model)	1	1	
5	302M834170	2M834170	SHEET OPERATION L POR (3in1 model)	1	1	
6	302M834180	2M834180	SHEET OPERATION L DUT (3in1 model)		1	
7	302M834190	2M834190	SHEET OPERATION L RUS (3in1 model)		1	
8	302M834330	2M834330	SHEET OPERATION R GER (3in1model)		1	
9	302M834340	2M834340	SHEET OPERATION R FRA (3in1model)	1	1	
10	302M834350	2M834350	SHEET OPERATION R ITA (3in1model)		1	
11	302M834360	2M834360	SHEET OPERATION R SPA (3in1model)	1	1	
12	302M834370	2M834370	SHEET OPERATION R POR (3in1model)	1	1	
13	302M834380	2M834380	SHEET OPERATION R DUT (3in1model)		1	
14	302M834390	2M834390	SHEET OPERATION R RUS (3in1model)		1	
15	302M934130	2M934130	SHEET OPERATION L GER (4in1 model)		1	
16	302M934140	2M934140	SHEET OPERATION L FRA (4in1 model)	1	1	
17	302M934150	2M934150	SHEET OPERATION L ITA (4in1 model)		1	
18	302M934160	2M934160	SHEET OPERATION L SPA (4in1 model)	1	1	
19	302M934170	2M934170	SHEET OPERATION L POR (4in1 model)	1	1	
20	302M934180	2M934180	SHEET OPERATION L DUT (4in1 model)		1	
21	302M934190	2M934190	SHEET OPERATION L RUS (4in1 model)		1	
22	302M934350	2M934350	SHEET OPERATION R GER (4in1model)		1	
23	302M934320	2M934320	SHEET OPERATION R FRA (4in1model)	1	1	
24	302M934360	2M934360	SHEET OPERATION R ITA (4in1model)		1	
25	302M934330	2M934330	SHEET OPERATION R SPA (4in1model)	1	1	
26	302M934340	2M934340	SHEET OPERATION R POR (4in1model)	1	1	
27	302M934370	2M934370	SHEET OPERATION R DUT (4in1model)		1	
28	302M934380	2M934380	SHEET OPERATION R RUS (4in1model)		1	
29	303HZ45010	3HZ45010	MODULAR CORD (4in1 model)	1		
29	3063527482	63527482	MODULAR CORD AUSTRALIA (4in1 model)			1

FIG. 19 Maintenance Kits

2M8/2M9

Ref. No.	Part.No.	Alternative Part.No.	Description	Quantity		
				120	230	240
	1702KV7US0	072KV7US	MK-592/MAINTENANCE KIT (OPTION) DV-560 US (Y) DV-560 US (K) DV-560 US (C) DV-560 US (M) PARTS HOLDER RETARD ASSY SP DK-590 FK-590(U) PARTS HOLDER RETARD ASSY SP PARTS HOLDER FEED ASSY SP TR-590 ROLLER M/P ASSY /43487B0027 A4	1 1 1 1 1 1 4 1 1 1 1 1		
	1702KV8NL0	072KV8NL	MK-590/MAINTENANCE KIT (OPTION) DV-560(Y) DV-560(K) DV-560(C) DV-560(M) PARTS HOLDER RETARD ASSY SP DK-590 FK-590(E) PARTS HOLDER RETARD ASSY SP PARTS HOLDER FEED ASSY SP TR-590 ROLLER M/P ASSY /43487B0027 A4		1 1 1 1 1 1 4 1 1 1 1 1	1 1 1 1 1 1 4 1 1 1 1 1

## INDEX

2M8/2M9

Part.No.	Alternative	Description	Fig.No.
1702KV7US0	072KV7US	MK-592/MAINTENANCE KIT (OPTION)	19
1702KV8NL0	072KV8NL	MK-590/MAINTENANCE KIT (OPTION)	19
36211110	36211110	PULLEY,LEADING FEED ADF	16
3019527401	19527401	POWER CORD(120)	13
3063527482	63527482	MODULAR CORD AUSTRALIA (4in1 model)	18
302F929050	2F929050	PULLEY FEED DU	4
302F944160	2F944160	FAN POWER PWB 50	12
302FV45020	2FV45020	AC CORD ASSY	13
302FV45040	2FV45040	AC CORD ASSY	13
302G634070	2G634070	LABEL ENERGY STAR	4
302HG44110	2HG44110	FAN MOTOR 50	13
302HN02611	2HN02611	FOOT	13
302HN08140	2HN08140	LUTCH	1
302HN44010	2HN44010	FAN MOTOR	12,13
302HN44090	2HN44090	MOTOR FUSER	12
302HN44180	2HN44180	SWITCH SIZE	12
302HN44210	2HN44210	FAN MOTOR	12
302HN93012	2HN93012	DV-560(K)	7
302HN93022	2HN93022	DV-560(Y)	7
302HN93032	2HN93032	DV-560(C)	7
302HN93042	2HN93042	DV-560(M)	7
302HN93252	2HN93252	DV-560 US (K)	7
302HN93262	2HN93262	DV-560 US (Y)	7
302HN93272	2HN93272	DV-560 US (C)	7
302HN93282	2HN93282	DV-560 US (M)	7
302K305030	2K305030	COVER PANEL A	14
302KT04010	2KT04010	COVER LEFT BOTTOM	1
302KT04020	2KT04020	COVER RIGHT BOTTOM	1
302KT04030	2KT04030	COVER CABLE	1
302KT06050	2KT06050	ACTUATOR PE	3
302KT93040	2KT93040	CT-591	2
302KT94051	2KT94051	PARTS HOLDER RETARD ASSY SP	3
302KT94060	2KT94060	PARTS COVER WASTE ASSY SP	1
302KT94070	2KT94070	PARTS PWB ASSY CASSETTE SP	3
302KT94080	2KT94080	PARTS PWB ASSY EXIT SP	13
302KV00100	2KV00100	INLET ASSY	13
302KV02480	2KV02480	ACTUATOR DETECTION CONTAINER	13
302KV02C70	2KV02C70	ACTUATOR PUSH SWITCH	13
302KV04030	2KV04030	COVER LEFT	1
302KV04060	2KV04060	COVER LEFT REAR	1

Part.No.	Alternative	Description	Fig.No.
302KV04070	2KV04070	COVER RIGHT REAR	1
302KV04130	2KV04130	STRAP COVER REAR	1
302KV06090	2KV06090	ACTUATOR REGIST	3
302KV06341	2KV06341	ACTUATOR B	3
302KV34090	2KV34090	LABEL MULTI LANGUAGE	5
302KV93012	2KV93012	DK-590	8
302KV93020	2KV93020	LK-590A	6
302KV93030	2KV93030	LK-590B	6
302KV93040	2KV93040	FK-590(E)	10
302KV93050	2KV93050	FK-590(U)	10
302KV93070	2KV93070	TR-590	9
302KV93090	2KV93090	DR-590A	11
302KV93100	2KV93100	DR-590B	11
302KV93110	2KV93110	WT-590	13
302KV94060	2KV94060	PARTS HIGH VOLTAGE UNIT SP	13
302KV94080	2KV94080	PARTS BUSH GEAR SP	12
302KV94110	2KV94110	PARTS COVER RIGHT ASSY SP	1
302KV94130	2KV94130	PARTS COVER MPF ASSY SP	4
302KV94140	2KV94140	PARTS SEPARATOR MPF ASSY SP	4
302KV94150	2KV94150	PARTS PLATE BOTTOM MPF ASSY SP	4
302KV94160	2KV94160	PARTS TRANSFER ASSY SP	5
302KV94171	2KV94171	PARTS CONVEYING ASSY SP	5
302KV94191	2KV94191	PARTS HOLDER FEED ASSY SP	3
302KV94200	2KV94200	PARTS HOLDER MIDDLE ROLLER ASSY SP	3
302KV94210	2KV94210	PARTS DRIVE FEED ASSY SP	11
302KV94220	2KV94220	PARTS DRIVE PRESS ASSY SP	11
302KV94230	2KV94230	PARTS DRIVE MPF ASSY SP	11
302KV94254	2KV94254	PARTS DU REAR COVER ASSY SP	5
302KV94270	2KV94270	PARTS MOTOR-DC ASSY Y SP	12
302KV94280	2KV94280	PARTS MOTOR-DC ASSY C SP	12
302KV94290	2KV94290	PARTS MOTOR-DC ASSY M SP	12
302KV94300	2KV94300	PARTS MOTOR-DC ASSY K SP	12
302KV94310	2KV94310	PARTS MOTOR-DC ASSY LSU SP	12
302KV94320	2KV94320	PARTS ID SENSOR ASSY SP	12
302KV94350	2KV94350	PARTS PWB ASSY RFID SP	12
302KV94360	2KV94360	PARTS PWB ASSY THERMISTOR SP	12
302KV94370	2KV94370	PARTS TONER FULL DETECT SP	13
302KW04030	2KW04030	COVER LEFT UPPER	1
302KW04040	2KW04040	COVER RIGHT UPPER	1
302KW04050	2KW04050	COVER REAR UPPER	1

Part.No.	Alternative	Description	Fig.No.
302KW04090	2KW04090	PIN LID TOP	1
302KW94040	2KW94040	PARTS SWITCHING REGULATOR 100V SP	13
302KW94050	2KW94050	PARTS SWITCHING REGULATOR 230V SP	13
302KW94070	2KW94070	PARTS FRAME ISU TOP ASSY SP	15
302KW94080	2KW94080	PARTS LID TOP M ASSY SP	1
302KW94090	2KW94090	PARTS COVER FRONT ASSY SP	1
302KW94100	2KW94100	PARTS COVER RIGHT UPPER ASSY SP	1
302KX94040	2KX94040	PARTS FAX UNIT E SP (4in1 model)	17
302KX94050	2KX94050	PARTS FAX UNIT U SP (4in1 model)	17
302LW94060	2LW94060	PARTS MOTOR ISU SP	15
302M804010	2M804010	COVER CONNECTOR (3in1 model)	1
302M805020	2M805020	PANEL OPERATION L	14
302M805030	2M805030	PANEL OPERATION R	14
302M805040	2M805040	PANEL OPERATION M	14
302M805050	2M805050	COVER IC-CARD	14
302M805090	2M805090	COVER IC-CARD SUB A	14
302M834110	2M834110	SHEET OPERATION L E (3in1 model)	14
302M834130	2M834130	SHEET OPERATION L GER (3in1 model)	18
302M834140	2M834140	SHEET OPERATION L FRA (3in1 model)	18
302M834150	2M834150	SHEET OPERATION L ITA (3in1 model)	18
302M834160	2M834160	SHEET OPERATION L SPA (3in1 model)	18
302M834170	2M834170	SHEET OPERATION L POR (3in1 model)	18
302M834180	2M834180	SHEET OPERATION L DUT (3in1 model)	18
302M834190	2M834190	SHEET OPERATION L RUS (3in1 model)	18
302M834310	2M834310	SHEET OPERATION R E (3in1model)	14
302M834330	2M834330	SHEET OPERATION R GER (3in1model)	18
302M834340	2M834340	SHEET OPERATION R FRA (3in1model)	18
302M834350	2M834350	SHEET OPERATION R ITA (3in1model)	18
302M834360	2M834360	SHEET OPERATION R SPA (3in1model)	18
302M834370	2M834370	SHEET OPERATION R POR (3in1model)	18
302M834380	2M834380	SHEET OPERATION R DUT (3in1model)	18
302M834390	2M834390	SHEET OPERATION R RUS (3in1model)	18
302M893010	2M893010	PARTS CARRIAGE ASSY	15
302M894010	2M894010	PARTS OPERATION UNIT SP (3in1 model)	14
302M894032	2M894032	PARTS PWB MAIN ASSY SP (3in1 model)	13
302M894042	2M894042	PARTS PWB MAIN ASSY SP EU (3in1 model)	13
302M894050	2M894050	PARTS PWB PANEL MAIN ASSY	14
302M894060	2M894060	PARTS PWB ENGINE ASSY SP	12
302M904010	2M904010	COVER CONNECTOR (4in1 model)	1
302M934110	2M934110	SHEET OPERATION L E (4in1 model)	14

Part.No.	Alternative	Description	Fig.No.
302M934130	2M934130	SHEET OPERATION L GER (4in1 model)	18
302M934140	2M934140	SHEET OPERATION L FRA (4in1 model)	18
302M934150	2M934150	SHEET OPERATION L ITA (4in1 model)	18
302M934160	2M934160	SHEET OPERATION L SPA (4in1 model)	18
302M934170	2M934170	SHEET OPERATION L POR (4in1 model)	18
302M934180	2M934180	SHEET OPERATION L DUT (4in1 model)	18
302M934190	2M934190	SHEET OPERATION L RUS (4in1 model)	18
302M934310	2M934310	SHEET OPERATION R E (4in1model)	14
302M934320	2M934320	SHEET OPERATION R FRA (4in1model)	18
302M934330	2M934330	SHEET OPERATION R SPA (4in1model)	18
302M934340	2M934340	SHEET OPERATION R POR (4in1model)	18
302M934350	2M934350	SHEET OPERATION R GER (4in1model)	18
302M934360	2M934360	SHEET OPERATION R ITA (4in1model)	18
302M934370	2M934370	SHEET OPERATION R DUT (4in1model)	18
302M934380	2M934380	SHEET OPERATION R RUS (4in1model)	18
302M994010	2M994010	PARTS OPERATION UNIT SP (4in1 model)	14
302M994022	2M994022	PARTS PWB MAIN ASSY SP (4in1 model)	13
302M994032	2M994032	PARTS PWB MAIN ASSY SP EU (4in1 model)	13
303HL10200	3HL10200	SPRING LOOP	16
303HZ45010	3HZ45010	MODULAR CORD (4in1 model)	18
303K502200	3K502200	ACTUATOR BASE	16
303LJ02080	3LJ02080	ACTUATOR PUSH	16
303LJ07050	3LJ07050	ACTUATOR ORIGINAL	16
303LJ24080	3LJ24080	ACTUATOR TIMING	16
303LJ44040	3LJ44040	CLUTCH PAPER FEED	16
303LJ94010	3LJ94010	PARTS DRIVER PWB ASSY SP	16
303LJ94061	3LJ94061	PARTS MOTOR DP SP	16
303LJ94070	3LJ94070	PARTS PLATE ORIGINAL SP	16
303LJ94120	3LJ94120	PARTS TABLE ASSY SP	16
303LJ94140	3LJ94140	PARTS SOLENOID PRESSURE PULLEY SP	16
303LJ94150	3LJ94150	PARTS SOLENOID FEED SHIFT SP	16
303M602020	3M602020	HINGE LEFT	16
303M602030	3M602030	HINGE RIGHT	16
303M602070	3M602070	STOPPER ORIGINAL	16
303M604010	3M604010	COVER FRONT	16
303M604020	3M604020	COVER REAR	16
303M694010	3M694010	PARTS COVER PF ASSY	16
303M694030	3M694030	PARTS SEPARATION PAD ASSY SP	16
3BR07040	3BR07040	PULLEY,PAPER FEED	16
5AAVR0LL+051	2CL16130	ROLLER M/P ASSY /43487B0027 A4	4

Part.No.	Alternative	Description	Fig.No.
7NXGP1S173LCH01 7NXSG2481+++H01 7SM010104+++H01 7SP01000001+H01 7SP01000005+H01	NX116910 NX052600 SM055200 SP044290 SP119750	SENSOR OPT. SENSOR OPT. SW.MICRO SW.PUSH SW.PUSH	12,13 16 13 13 13



## KYOCERA MITA EUROPE B.V.

Bloemlaan 4, 2132 NP Hoofddorp,  
The Netherlands  
Phone: +31.20.654.0000  
Home page: <http://www.kyoceramita-europe.com>  
Email: [info@kyoceramita-europe.com](mailto:info@kyoceramita-europe.com)

KYOCERA MITA NEDERLAND B.V.  
Beechavenue 25, 1119RA Schiphol-Rijk  
The Netherlands  
Phone: +31.20.58.77.200

KYOCERA MITA (UK) LTD  
8 Beacontree Plaza  
Gillette Way Reading Berks RG2 0BS,  
U.K.  
Phone: +44.1189.311.500

KYOCERA MITA ITALIA S.p.A.  
Via G. Verdi, 89 / 91, 20063 Cernusco s/N  
Milano, Italy  
Phone: +39.02.92179.1

S.A. KYOCERA MITA BELGIUM N.V.  
Sint-Martinusweg 199-201, 1930 Zaventem,  
Belgium  
Phone: +32.2.720.9270

KYOCERA MITA FRANCE S.A.  
Espace Technologique de St Aubin  
Route de l' Orme  
91195 Gif-sur-Yvette CEDEX, France  
Phone: +33.1.6985.2600

KYOCERA MITA ESPAÑA S.A.  
Edificio Kyocera, Avda de Manacor No. 2,  
28290 Las Matas (Madrid),  
Spain  
Phone: +34.91.631.8392

KYOCERA MITA FINLAND OY  
Atomitie 5C, 00370 Helsinki,  
Finland  
Phone: +358.9.4780.5200

KYOCERA MITA (SCHWEIZ)  
Hohlstrasse 614, 8048 Zürich  
Switzerland  
Phone: +41.44.908.4949

KYOCERA MITA DEUTSCHLAND GMBH  
Otto-Hahn-Str. 12 D-40670 Meerbusch,  
Germany  
Phone: +49.2159.918.0

KYOCERA MITA GMBH AUSTRIA  
Eduard-Kittenberger-Gasse 95,  
1230 Wien,  
Austria  
Phone: +43.1.86338

KYOCERA MITA SVENSKA AB  
Esbogatan 16B 164 75 Kista,  
Sweden  
Phone: +46.8.546.55000

KYOCERA MITA NORGE  
Postboks 150 Oppsal, NO 0619 Oslo  
Olaf Helsetsvei 6, NO 0694 Oslo,  
Norway  
Phone: +47.22.62.73.00

KYOCERA MITA DANMARK A/S  
Ejby Industrivej 60, DK-2600 Glostrup,  
Denmark  
Phone: +45.7022.3880

KYOCERA MITA PORTUGAL LDA.  
Rua do Centro Cultural, 41 (Alvalade) 1700-106 Lisboa,  
Portugal  
Phone: +351.21.843.6780

KYOCERA MITA SOUTH AFRICA (PTY) LTD.  
49 Kyalami Boulevard,  
Kyalami Business Park Midrand,  
South Africa  
Phone: +27.(0)11.540.2600

## KYOCERA MITA AMERICA, INC.

Headquarters:  
225 Sand Road,  
Fairfield, New Jersey 07004-0008,  
U.S.A.  
Phone: (973) 808-8444

KYOCERA MITA AUSTRALIA PTY. LTD.  
Level 3, 6-10 Talavera Road, North Ryde,  
N.S.W. 2113 Australia  
Phone: (02) 9888-9999

KYOCERA MITA NEW ZEALAND LTD.  
1-3 Parkhead Place, Albany  
P.O. Box 302 125 NHPC, Auckland,  
New Zealand  
Phone: (09) 415-4517

## KYOCERA MITA Asia Limited

16/F., Mita Centre,  
552-566, Castle Peak Road,  
Tsuen Wan, New Territories, Hong Kong  
Phone: (852)-2610-2181

## KYOCERA MITA Corporation

2-28, 1-chome, Tamatsukuri, Chuo-ku  
Osaka 540-8585, Japan  
Phone: (06) 6764-3555  
<http://www.kyoceramita.com>

©2011 KYOCERA MITA Corporation

 is a trademark of Kyocera Corporation



## KYOCERA MITA AMERICA, INC.

### Headquarters:

225 Sand Road,  
Fairfield, New Jersey 07004-0008  
TEL : (973) 808-8444  
FAX : (973) 882-6000

### New York Branch:

30-30 47th Avenue  
Long Island City, NY 11101  
TEL : (718) 289-2500  
FAX : (718) 289-2501

### Northeastern Region:

225 Sand Road,  
Fairfield, New Jersey 07004-0008  
TEL : (973) 808-8444  
FAX : (973) 882-4401

### Midwestern Region:

201 Hansen Court Suite 119  
Wood Dale, Illinois 60191  
TEL : (630) 238-9982  
FAX : (630) 238-9487

### Western Region:

14101 Alton Parkway,  
Irvine, California 92618-7006  
TEL : (949) 457-9000  
FAX : (949) 457-9119

### Southeastern Region:

3100 Breckinridge Blvd. NW Building 100,  
Suite 105 Duluth, Georgia 30096  
TEL : (770) 729-9786  
FAX : (770) 729-9873

### Southwestern Region:

2825 West Story Road,  
Irving, Texas 75038-5299  
TEL : (972) 550-8987  
FAX : (972) 570-4704

### National Operation Center & National Training Center:

2825 West Story Road,  
Irving, Texas 75038-5299  
TEL : (972) 659-0055  
FAX : (972) 570-5816

### Latin America Division:

8240 N.W. 52nd. Terrace Dawson Building,  
Suite 108 Miami, Florida 33166  
TEL : (305) 421-6640  
FAX : (305) 421-6666

## KYOCERA MITA CANADA, LTD.

6120 Kestrel Road, Mississauga,  
Ontario L5T 1S8, Canada  
TEL : (905) 670-4425  
FAX : (905) 670-8116

## KYOCERA MITA MEXICO, S.A. DE C.V.

Av. 16 de Septiembre #407  
Col. Santa Inés,  
Azcapotzalco México,  
D.F. 02130, México  
TEL : (55) 5383-2741  
FAX : (55) 5383-7804

## KYOCERA MITA Brazil Ltda.

Av. Tambore, 1180 Mob.B-09 CEP 06460-000  
Tambore-Barveri-SP,  
Brazil  
TEL : (55) 11-4195-8496  
FAX : (55) 11-4195-6167

## KYOCERA MITA Asia Limited

16/F., Mita Centre,  
552-566, Castle Peak Road,  
Tsuen Wan, New Territories, Hong Kong  
Phone: (852)-2610-2181

### KYOCERA MITA (Thailand) Corp., Ltd.

335 Ratchadapisek Road, Bangsue,  
Bangkok, 10800, Thailand  
Phone: (66)-2-586-0333

### KYOCERA MITA Singapore Pte Ltd.

121 Genting Lane, 3rd Level,  
Singapore 349572  
Phone: (65)-6741-8733

### KYOCERA MITA Hong Kong Limited

16/F., Mita Centre,  
552-566, Castle Peak Road,  
Tsuen Wan, New Territories,  
Hong Kong  
Phone: (852)-2429-7422

### KYOCERA MITA Taiwan Corporation

6F., No.37, Sec. 3, Minquan E. Rd.,  
Zhongshan Dist., Taipei 104, Taiwan R.O.C.  
Phone: (886)-2-2507-6709

### KYOCERA MITA Korea Co., Ltd.

18F, Kangnam bldg, 1321-1,  
Seocho-Dong, Seocho-Gu, Seoul, Korea  
Phone: (822)-6933-4050

### KYOCERA MITA India Private Limited

First Floor, ORCHID CENTRE  
Sector-53, Golf Course Road, Gurgaon 122  
002, India  
Phone: (91)-0124-4671000

©2011 KYOCERA MITA Corporation

 is a trademark of Kyocera Corporation

